

October 19, 2016

Jefferson Parish
Purchasing Department
Post Office Box 9
Gretna, LA 70054-0009

Re: Sealed Bid for: Purchasing of a Combination Sewer Cleaner Truck for the
Jefferson Parish Department of Drainage

Bid Number: 50-00117853
Bid Date: October 20, 2016
Bid Time: 2:00 P.M.

Dear Sirs and Madams:

Covington Sales & Service, Inc., is pleased to submit our Bid for One (1) Vac-Con Model No. PD4290H/1000 mounted on a New Kenworth Model T470 Chassis, as per your advertised specifications.

We take no exceptions to your specifications.

Should you have any further questions, or require any additional information, please do not hesitate to contact our office.

Sincerely,

Covington Sales & Service, Inc.



Chris Kinchen
President



Bid Number 50-00117853

**PURCHASE OF A COMBINATION SEWER CLEANER TRUCK FOR THE
JEFFERSON PARISH DEPARTMENT OF DRAINAGE**

BID DUE: OCTOBER 20, 2016 AT 2:00 PM

ATTENTION VENDORS!!!

Please review all pages and respond accordingly, complying with all provisions in the technical specifications and Jefferson Parish Instructions for Bidders and General Terms and Conditions. All bids must be received in the Purchasing Department by the bid due date and time.

**Jefferson Parish Purchasing Department
200 Derbigny Street
General Government Building, Suite 4400
Gretna, LA 70053
Buyer Name: Misty A. Camardelle
Buyer Email: mcamardelle@jeffparish.net
Buyer Phone: 504-364-2683**

PURCHASE OF A COMBINATION SEWER CLEANER TRUCK FOR THE JEFFERSON PARISH DEPARTMENT OF DRAINAGE

GENERAL

The machine shall be capable of removing stones, grit, grease, sludge and other debris from sanitary sewer and/or storm drain lines by the flushing action of high-pressure water. The high-pressure sewer cleaner operates independent of the vacuum system. This unit shall have a total minimum of 550 Horse Power.

The machine shall include an air conveying vacuum system to provide for the simultaneous removal of the debris flushed to the manhole by the high-pressure water system or for the removal of debris from sewers, sumps, catch basins, digesters, wet wells, bar screens, etc.

The machine shall be capable of being operated by one man, with all operating controls for high-pressure water pump, hose reel, and vacuum, located at the front of the machine for safety.

LOUISIANA DEALER'S LICENSE

In accordance with LA RS 32:1254 et seq and LA RS 38:2212.8, a Louisiana State Dealer's License is required. All bidders must provide a copy of their valid Louisiana Dealer's License with their bid submission. Failure to submit this copy will result in bid rejection.

DEBRIS BODY

Debris storage body shall have a minimum usable liquid capacity of 9 cubic yards. The debris body shall be round for maximum strength and constructed of 3/16 inch ASTM A242 Corten A steel for enhanced corrosion resistance.

The rear door shall be dished and flanged for maximum strength, full opening, hinged at the top with low profile and adjustable style hinges.

There shall be a 6" diameter liquid drain valve, "knife valve type" and screen weldment inside for removing excess liquids. Drain shall have 10 feet of 6 inch lay flat hose.

The rear door shall be supplied with a debris deflector shield located inside the debris tank that encompasses 75 percent of the rear door. The debris deflector shield shall deflect material from rear door, and aid in draining off excess liquids.

A rear door safety prop shall be provided. For ease of maintenance there shall be no hydraulic components located inside the debris body or rear door.

Hydraulic operated, heavy duty wedge style door locks shall be installed. The door locks shall be operated by two double acting hydraulic cylinders. The rear door shall also hydraulically open and close (raise and lower) by means of two double acting hydraulic cylinders. The unlocking-opening and the closing-locking operations shall be controlled by a single switch and sequence valve.

Dual steel weldments with stainless steel screen 8" x 28" each providing up to 1200 square inches of added filtration for the vacuum system shall be provided inside the debris tank. These weldments shall be removable and require no cutting or welding.

A double acting power up/power down hydraulic scissors lift mechanism will be provided to raise body to a minimum 60 degree angle. The scissors lift mechanism shall be designed to support a minimum of 24 inches of the debris tank width to provide stability and when dumping on uneven ground. The lift capacity of hydraulic scissors lift cylinder is 56,000 lbs.

Dump controls shall be located on curbside mid-ship of the unit, well forward of the dumping area for operator safety. A manual override system is to be provided in case of system failure.

The debris body has a five year warranty. A copy of manufacturer's warranty statement shall be enclosed with bid. If pro-rated so state: N/A See Attached

An internal polyethylene float device with external indicator shall be supplied to show when body is loaded to capacity.

AUTOMATIC VACUUM BREAKER

The automatic vacuum breaker assembly is located inside the body.

The automatic vacuum breaker assembly shall be controlled by an electric over hydraulic circuit. The entire system shall be replaceable via a bolt on assembly. The assembly shall consist of a 12" inlet and two 8" ports that provide air flow to the vacuum system.

A full indication activates an automatic vacuum breaker shut down system that completely shuts down 100 percent of the airflow to the vacuum system to prevent overfilling and wastewater discharge into the atmosphere.

The vacuum breaker system is automatically activated (closed) when the parking brake system is released to eliminate carryover during transit.

The system is controlled/activated, at the front hose reel control station. This enables the operator to pick up large debris with boom and place debris on the road surface. This system can be used for safety in the event suction must be shut off in case of an emergency.

POSITIVE DISPLACEMENT BLOWER

A lobe type positive displacement blower shall be provided capable of 6000 CFM's and 18" of Hg. with cyclone separator. Control of the blower regarding start, stop and the rate of vacuum suction is performed from the front of the truck. A vacuum suction breaker disconnect switch is provided to enable operator to pick up large debris with boom and place debris on road surface. The vacuum system shall operate independent of the high-pressure water system.

The blower is protected by (2) two 3" diameter vacuum relief valves. The system incorporates an air/water separator and a sound silencer to separate material before it enters blower and to ensure quiet operation.

A means of starting, stopping and varying the vacuum suction from operator station at the front of the machine is provided.

The blower is mounted on a frame independent of the water tank.

Unit must be capable of vacuuming under water without air induction. A manometer/vacuum test may be required to demonstrate the system performance.

The positive displacement blower shall have a 12-month non-prorated warranty.

VACUUM PICK UP HOSE

Shall be front loading, attached at the front of the machine in order to provide ease of positioning the machine over the manhole, as well as afford maximum safety for the operator.

The 8" will be mounted on a boom that will provide a minimum of 18' vertical lift utilizing dual hydraulic cylinder and 230 degree of boom rotation powered hydraulically for non-interrupted smooth movement. Boom to have a lift capacity of 500 lbs. at the front bumper.

The boom will be powered by an electric over hydraulic system: up/down by dual lift cylinders. The right/left movements shall be hydraulic via worm gear rotation.

The boom shall hydraulically telescope a minimum of 10 ft. forward from the operator's station. The height of the boom shall not change while the boom is being telescoped. A manual override system shall be provided for right/left, and up/down functions in case of system failure.

Control of the boom is by means of a joystick control at the operator's station, requiring no cables at operator's feet for boom operation. A wireless remote control shall be provided for

Boom, Vacuum Breaker, Chassis Throttle, and Debris Body functions. A manual override system shall be provided for right/left, and up/down functions in case of system failure.

A boom coverage chart shall be provided stating the square feet the boom covers.

8 inch diameter pipe extensions with clamps will be provided and carried on the truck as follows:

- 1 6-1/2' Catch Basin Nozzle
- 3 6' Aluminum Pipe Extension
- 1 5' Aluminum Pipe Extension
- 1 3' Aluminum Pipe Extension
- 2 spare quick clamps

WATER SUPPLY

The water tanks shall have a minimum usable capacity of 1000 U.S. gallons.

The water tanks shall be constructed of non-corrosive, non-metallic, durable, cross-linked polyethylene to eliminate rust, corrosion, and stress cracking.

The water tanks shall be mounted at and below the truck frame level to provide a low center of gravity for truck stability.

A 2-1/2 inch diameter x 25 feet long hydrant hose with hydrant wrench shall be supplied on the unit.

An anti-siphon fill device shall be installed on the unit.

Inspection ports shall be provided to fill or to add chemicals to the water system.

A sight gauge to indicate water level is located within sight of the operator station.

The water tanks are protected by a minimum of 11 gauge steel plating mounted below the water tanks for protection against road hazards when unit travels over the road, off the road or to landfills.

The water tanks shall carry a ten year replacement warranty.

AUXILIARY ENGINE (WATER PUMP DRIVE ENGINE)

John Deere 6-Cylinder 185 HP at 2400 rpm 415 CID Tier 3 Flex

HIGH-PRESSURE WATER PUMP

The high pressure water pump shall be rated to deliver smooth continuous pressure and flow through the entire flow range of the pump. The high pressure shall have smooth continuous flow for both the high pressure system and the hand gun system.

A continuous duty flow of 80 g.p.m. and 3000 p.s.i shall be provided.

High-pressure relief valves are provided for both the high-pressure system and hand gun system.

The water pump operates independently of the vacuum system and is powered by the auxiliary engine via clutchless, direct dual powerband drive system.

The high-pressure water pump drive system shall carry a five year replacement warranty. Warranty excludes the drive engine, i.e. auxiliary engine.

The water pump shall be capable of running dry.

Controls for starting and stopping the water pump and to vary the flow and pressure shall be at the front hose reel operator's station.

The high-pressure water pump is equipped with a cold weather drain valve. The valve allows the operator to completely drain the high-pressure pump.

HOSE REEL ASSEMBLY

The hose reel assembly is mounted on the front of the vehicle. The hose reel shall have a minimum of 30" inside diameter with a capacity of 800' x 1" hose. The hose reel is equipped with a cage - Lexan style. The hose reel is hydraulically powered in both directions by means of a double chain and sprocket drive. The controls for operating the motor have a flow control device to regulate the rotational speed of the reel in both directions. All hydraulic hoses are behind a steel housing to protect operator from hydraulic oil if a hose fails. The hydraulic motor, chain, and sprockets have a protective cover or are mounted on the radiator side of the hose reel for operator safety. The hose reel articulates 180 degrees to the drivers side allowing operator to work in any position through this arc. This allows greater flexibility in truck placement for manholes located in tough areas and provides greater safety to the operator. Reel extends beyond the width of unit for greater flexibility for positioning reel over offset manholes, catch basins, etc. A hydraulically controlled outrigger leg is supplied that comes in

contact with the ground at any one position. A warning light is located in the cab to warn the operator that the outrigger leg is not in its transported position prior to moving the unit. A manual bypass system for the hose reel assembly is provided to manually pull the reel assembly away from its transported position. This feature allows operator to check fluids without starting engines.

JET HOSE

600' x 1" jet rodder hose will be supplied rated for 3000 psi working pressure and 7500 psi burst pressure.

A heavy duty hose guide with 25' of nylon rope will be provided.

Nozzles shall be hardened steel with replaceable ceramic orifices as follows: 1) Chisel head penetrator & 1) standard sanitary.

MANHOLE CLEANING WATER SYSTEM (HAND GUN)

The high-pressure pump and independent water tank assembly supplied shall be used for manhole cleaning. A smooth continuous flow of 20 g.p.m. and pressure of 600 p.s.i. shall be provided for ease of operation. A hand gun pressure relief valve set at 600 p.s.i. shall be provided. One full functioning hand gun with on/off hand control, replaceable nozzle tip, 12 inch extension, adjustable spray and 50' x 1/2" hose with retractable reel will be provided.

The hand gun will attach to the system via a quick couple connection at the curbside of the unit. To avoid being coiled at the operator's station a hand gun holder will be provided at the front bumper.

HYDRAULIC SYSTEM AND LUBRICATION

The hydraulic system has a 55-gallon capacity.

The hydraulic system shall incorporate a main shut off valve in case of hydraulic failure.

The hydraulic system shall incorporate hydraulic pressure relief valves and pressure gauges for ease of trouble shooting and maintenance.

The unit is equipped on the passenger side, mid-section of the module, a permanent weatherproof white vinyl lubrication chart that points out lubrication points on the module and specifies what type of lubrication and hydraulic fluids are required. The chart also specifies the frequency of each lubrication point.

Remote plumbed grease fittings are provided for the vacuum compressor, boom rotation, and water pump drive areas.

ACCESSORIES

A minimum twelve (12) month manufacturer's guarantee on the unit shall be provided.

- 2 35" x 14" x 24" side mounted tool boxes shall be provided.
- 1 Debris body power flush out system
- 1 Rear mounted hydraulic pump off system, 400 gpm w/20' lay flat hose
- 1 Gravity drain system consisting of plumbing to the mid-passenger side of the unit. Includes a 3" knife valve with cam-lock connection, 30' of layflat hose with storage rack allowing return of liquids to the manhole without having to reposition vehicle.
- 1 Front Gate Valve for use with Gravity Drain Option
- 1 Wear plate, swing style
- 1 Air purge system
- 1 1/4 turn ball valve water drain
- 1 Variable flow valve
- 1 Vertical style, deck mounted pipe rack, holds 3 pipe
- 1 Folding pipe rack holds 3 pieces of pipe, tank mounted, curbside
- 1 Storage box behind cab, 16" x 42" x 96"
- 1 Storage box shall be provided with two roll out shelves
- 1 Back up alarm
- 1 Hydro excavation package: 50' retractable handgun hose reel with 50' of 1/2" of high pressure hose, HP/Quick disconnect, heavy duty HP unloader valve, main control ball valve, 72"x1/2" Sch. 80 Lance w/Quick Dcn., Sngl. Fwd. Spray Nozzle, Horiz. Hand.
- 1 Hose footage counter, curb side
- 1 Rear mounted tow hooks
- 1 Auxiliary engine remote oil drain

- 1 Remote boom grease zerk assembly, (accessible from ground level)
- 1 Remote debris tank grease zerk assembly (accessible from ground level)
- 1 Aluminum Dual Roller Level Wind Guide ilo standard
- 1 Nozzle rack
- 1 10' leader hose
- 1 Water pump remote oil drain
- 1 Built in Body Prop - Rear Boom Support Mounted
- 1 John Deere 6-Cylinder 185 HP at 2400 rpm 415 CID
- 1 12VDC auxiliary hydraulic pump
- 1 Traffic Camera with Color Monitor (Camera placement must be picked)
- 1 Rear traffic camera
- 1 Front hose reel camera - to view front of hose reel area
- 1 Long handle storage/ (2) PVC
- 1 Long handle storage placement - rear of mainframe
- 1 Cone storage rack
- 1 Cone storage rack

LIGHTING

The entire module electrical system is vapor sealed to eliminate moisture damage.

All wiring is color-coded, labeled and run in sealed terminal enclosures.

All module circuits are protected by circuit breakers.

Clearance lights and reflectors are furnished in accordance with D.O.T. requirements.

- 1 4 LED strobes - (2) front bumper, (2) rear bumper - Whelen 50A03ZCR - Amber
- 1 LED arrow board, rear debris tank door mounted - Whelen TA1251NF1 Traffic Arrow

- 1 LED Arrow stick - Whelen TAM85 Traffic Advisor
- 2 Limb guards for flood lights
- 1 LED Boom Mounted Flood Light - Whelen NP6BB Worklight
- 1 LED Rear Mounted Flood Lights - Whelen NP6BB Worklight

PAINT

Unit paint surface is shot blasted, primed and sanded prior to paint. Unit to be painted with DuPont Imron 5000 polyurethane paint.

Unit shall have reflective green side and boom stripes and rear door chevrons.

Chassis shall be painted manufacturers standard white.

TRAINING AND MANUALS

Operator training will be conducted by a factory-trained representative for a minimum of one day at the time of delivery. 3 copy(ies) of the operating and maintenance manual for the sewer cleaner module shall be provided upon unit delivery. An operational video will be provided with the unit.

MOUNTING AND DELIVERY

The unit described will be mounted on a truck chassis acceptable to the body manufacturer at the factory of the body manufacturer.

EXCEPTIONS AND DEVIATIONS:

Bidder shall fully explain every variance, exception, and or deviation to the bid specifications. Additional sheets/lines may be added if required.

Chassis Specifications

Unit		Rr Axle Load (lbs):	23000
Model:	T400Series	G.C.W (lbs): Road	43000
Type:	FULL TRUCK	Conditions:	
Description:	T470 20K/23K	Class A (Highway)	90
Application			
SEWER COMBINATION UNIT		Class B (Hwy/Mtn)	10
		Class C (Off-Hwy)	00
Body		Class D (Off-Road)	00
Type:	Vacuum tank	Maximum Grade:	6
Length: (ft):	16.0	Wheelbase (in):	243
Height (ft):	13.5	Overhang (in):	60
Max Laden Weight (lbs):	4000	Fr Axle to BOC (in):	73
		Cab to Axle (in):	170
Chassis		Cab to EOF (in):	230
Fr Axle Load (lbs):	20000		

Description**T400 Series Conventional Extended Cab Or Equal****T470 4x2 Medium Duty**

Chassis operation will include stationary application used in lower 48 states [US only].

Stationary operation is defined as running the engine under load while stationary at a substantial fraction of engine gross horsepower (60% or greater) for an extended period of time (longer than 5 - 10 minutes).

Dealer/Customer declines engine w/CARB Idle

Emissions Reduction Feature.

T470 4x2 Medium Duty**Other bulk goods**

Local pickup & delivery. Vehicles which haul freight, typically operating within a 100-mile radius, on public streets & highways, & other paved surfaces, including limited Class C roads.

Includes package & freight delivery, as well as fuel oil or petroleum distribution, etc. Road usage: minimum 3% Class B, do not code for Class D.

Vacuum tank**U.S. Domestic Registry, 50-State****Engine & Equipment****PX-9 370 2013 370@2000 365@2100 1250@1400**

Includes turbo exhaust brake, no code is used. Diagnostic Plug for data link, Oil Cooler, Aluminum Flywheel Housing.

N09200 N205 120..Standard Maximum Speed Limit [LSL] N09220 N207 0....Expiration Distance

N09240 P09 120...Hard Maximum Speed Limit

N09260 P14 64...Maximum Accelerator Pedal Vehicle Speed N09280 P16 0....Accelerator Lower Droop

N09300 P19 64...Maximum Cruise Speed N09320 C143 0....Cruise Control Lower Droop

N09360 N203 252...Reserve Speed Function Reset Distance N09380 N202 0....Maximum Cycle Distance

N09400 N206 10...Maximum Active Distance N09420 N201 0....Reserve Speed Limit Offset
N09440 P11 No...Engine Protection Shutdown N09460 P06 No...Gear Down Protection N09480
P26 1400.Max PTO Speed

N09500 P02 No...Cruise Control Auto Resume N09520 P04 No...Auto Engine Brake in Cruise
N09540 N209 0....Expiration Distance

N09560 P520 Yes..Enable Idle Shutdown Park Brake Set N09580 P32 5....Timer Setting

N09600 P233 Yes..Enable Impending Shutdown Warning N09620 P234 60...Timer For
Impending Shutdown Warning N09640 P516 35...Engine Load Threshold

N09680 P33 No...Idle Shutdown Manual Override

N09720 P230 Yes..Enable Hot Ambient Automatic Override N09740 P46 40...Low Ambient
Temperature Threshold N09760 P56 60...Intermediate Ambient Temperature Threshold
N09780 P47 80...High Ambient Temperature Threshold

Prospector Version 37.2

Replaces 37.1

Effective VSL Setting NA

Engine Idle Shutdown Timer Disabled

Enable EIST Ambient Temp Override

Enable EIST in PTO Mode

Use only with MX and Cummins engines

Eff EIST NA Expiration Miles

Use only with MX and Cummins engines

Air compressor: Cummins 18.7 CFM, Cummins, PACCAR

PX engines.

Engine mount Powercore air cleaner w/constant torque SS clamps, pop-up air restriction indicator. Pop-up indicator is standard.

Fan Hub: Horton 2-Speed for ISL9, ISL-G,

PX-8 or PX-9

Cooling module: 1000 square inches

T170/T270/T370/T470. Includes metal surge tank on T170/T270/T370.

RH under cab DPF/SCR w/ RH SOC vertical tailpipe.

For use w/ daycabs, extended daycabs, or modular sleepers. T660 requires split fender hood

Tailpipe: 5 in. single 24 in. 45 degree curved.

Fleetguard filter/Water separator FS1003 w/WIF

(water in fuel) sensor. For PACCAR PX-8/PX-9 or Cummins ISL engines.

Kenworth Fuel Cooler

Required for Cummins engines with a single fuel tank. Required for PACCAR MX-13 engine with a single fuel tank and stationary use: High RPM, low vehicle speed, sustained for longer than 1 hour. Optional for all other applications.

Alternator: PACCAR 160 amp, brush type

Batteries: 2 PACCAR GP31 threaded post (700) 1400

CCA dual purpose.

Starter: PACCAR 12 volt electrical system. W/centralized power distribution incorporating plug-in style relays. Circuit protection for serviceability, 12-volt light system w/circuit protection circuits number & color coded.

Battery disconnects switches 2, mounted on battery box.

Multi-function engine connector for body builder interface for Cummins.

Body Builder Control Harness coiled EOF for customer installed remote throttle and remote PTO controls. Harness includes Remote PTO control and Remote Throttle controls. T680/T880 models do not require 12-way engine connector sales codes. All other models require (1900082 or 1900084).

Transmission & Clutch

Transmission: Allison 3000RDS 6-speed w/PTO drive gear. 5th Gen controls. Includes heat exchanger & oil level sensor. Rugged Duty Series for vocational applications. Transynd transmission fluid is standard on all Allison 1000, 2000, 3000 & 4000 series transmissions. Requires a push button shift control code. Oil temperature gauge is standard on class 8 models.

Driveline: 3 medium-duty 2 center bearing.

*Med duty is 1760 series.

Torque converter included w/Allison

Transmission.

Pushbutton control center console mounted.

Class 8 with Allison Transmission.

Delete Allison FuelSense

J1939 Park Brake Auto Neutral

PTO adapter for front engine PTO.

Chassis will be fitted w/LH transmission PTO.

(PREVENTS ECU F/INTERFERING W/PTO ONLY)

Chassis will be fitted w/RH transmission PTO.

(PREVENTS ECU F/INTERFERING W/PTO ONLY)

Front Axle & Equipment

Dana Spicer D2000 Front Axle rated 20K standard track.

Front Brakes: 22K Bendix ES S-cam 16.5x6 in.

Front dustshield: for drum brakes: all front axles.

Front Brake Drum: 22,000 lbs. 16-1/2x6 in. Cast.

Front Hubs Iron hub pilot 22,000 lbs. 10 Bolt 16.5x6in. or 7in. or air disc brakes. 10 Bolt, 11-1/4 in. bolt circle. Consider Wheelguards (5850002) with aluminum wheels.

ConMet PreSet Plus Hub package; front axle.

Hubcap: front vented.

Front Auto Slack Adjuster.

Front Springs: Taperleaf 22K w/shock absorbers. C500 standard with a single stage spring and threaded pins. T800/T880/T440/T470/W900B standard with a multi-stage spring and rubber pins. For T800/T880/T440/T470/W9B, this is a three stage spring. The spring rate increases when loaded closer to the full capacity of the spring. Not available on W900L or W900S.

Dual power steering gears: 20K TRW TAS65.

Power Steering Cooler: Radiator mounted air to oil 2007+ engines only. 2899362 is optional w/ 2006 or 2007 engines.

Rear Axle & Equipment

Single Dana Spicer S23-170 single reduction axle, single rear axle rated at 23K.

Rear Axle Ratio - 5.57.

Single Rear Brakes 16-1/2x7 in. Bendix ES- extended service S-cam.

Single Rear Brake Drums: cast.

Single Rear Hubs: Aluminum hub pilot 23K; 11-1/4 in. bolt circle.

ConMet PreSet Plus Hub package; single rear axle.

Single Rear axle automatic slack adjusters.

Spring Brake: 3030 high output single.

Dustshields for drum brakes: all rear axles.

Bendix 4S/4M anti-lock brake system.

Rear suspension: single Reyco 79KB taper leaf 23K. Steel cross members & gussets, Kenworth long life spring w/helper. Unladen Height: 11.0 in. Laden Height: 9.3 in. Not available with shocks or swaybars.

Tires & Wheels

Front tires: Bridgestone M854 425/65R22.5 20PR. 44.8 in. diameter, all position. On/Off highway. Wide-base tire. Curb protector bar 20.7 in. SLR.

Rear tires: Bridgestone M799 11R22.5 16PR. 42 in. diameter, drive. 19.5 in. SLR. Code is priced per pair of tires.

Rear Tire Quantity: 4

Front wheel: Alcoa 82362 22.5x12.25 aluminum, with Lvl One [TM] finish, hub pilot mount. 11400lb. maximum rating. Super single. Standard track axles may be over 102 in. w/425 tires. Air disc brake compatible.

Rear wheel: Accuride 50487 22.5x8.25 steel. Steel Armor[TM] powder coat, hub pilot mount. 7400lb. maximum rating. 5- hand hole. Air disc brake compatible. Code is priced per pair of wheels.

Powder coat white steel wheel. Use in conjunction with front, dual front, rear, spare or lift axle wheel code(s). All wheels on chassis must have same finish color.

Rear Wheel/Rim Quantity: 4

Frame & Equipment

Frame Rails: 10-3/4 x 3-1/2 x 3/8in. Steel 337in. to 416 in. Truck frame weight is 3.48 lb.-in. per pair of rails. Section modulus is 17.80, RBM is 2,132,000 in-lbs per rail. Frame rail availability may be restricted based upon application, axle/suspension capacity, fifth wheel setting, or component/dimensional specifications. The results of the engineering review may result in a change to the requested frame rail. If a change is required Kenworth Application Engineering will advise the dealer of the appropriate material specification for a substitute rail.

Full Steel Insert: for 10-5/8 in. or 10-3/4 in. Steel 337 in. to 416 in. or 2nd insert for 11-5/8 in. steel frame. Adds 1,149,000 in-lb to main rail RBM. Truck insert weight is 2.05 lb.-in. per pair of rails. Full frame insert length is equal to wheelbase plus rear frame cutoff plus dimension forward of front axle by model: T660 and T800 =

21.26 in., C500B = bumper setting minus 0.79 in., W900B = 5.27 in., W900L = 1.50 in., W900S = 3.27 in., T440/T470 50 in. bumper setting =

21.26 in., T470 73 in. bumper setting = 72.3 in.

Delete bumper: Requires a bumper setting code.

73 in. Bumper setting. Requires a bumper code.

T470 W/ extended front frame rail. Must code for rail separately.

Mudflaps, Front: Extra wide for use w/ tires that are wide base singles.

Battery box cantilever aluminum BOC w/fiberglass cover.

Battery box location: LH Side.

T470,C5, T6, T8 non-polished DPF/SCR or CNG cover diamond plate w/ step. For use w/ 2010 or later exhaust systems. For T8, use extended length non-polished battery box on opposite rail to match the length of under cab components.

Rear mud flap arms: Betts B-25 standard-duty, straight. Includes B1732 mounting brackets as standard.

Rear mudflap shields: White plastic antisail w/Kenworth logo.

Square end-of-frame w/ cross member; non-towing.

Fuel Tanks & Equip

Fuel Tank: 75 US gallon 24.5in. aluminum under replace. Class 8 fuel tanks w/ o locking caps include an anti-siphon device on the filler neck.

DEF tank 6.9 clear BOC [CBOC], requires LH under cab fuel tank. This tank has 6.9 gallons of useable volume. The tank will be located inboard of the LH under cab fuel tank. There is no frame space required to locate this tank. Not for use on sleeper chassis. Standard capacity is calculated by fuel capacity of the vehicle and will accommodate two diesel fill-ups for every DEF fill-up. For 1:1 DEF fuel fill ratio, add 7889204.

Standard DEF to fuel fill ratio: 2:1 or greater.

Anti-siphon device swaged in place. For any number of fuel tanks.

DEF tank location is on the LH.

Location: 75 gal fuel tank LH under cab

Cab & Equipment

Cab: Extended Day Cab w/ Curved Glass. Includes aluminum & fiberglass fully hucked cab w/ all aluminum bulkhead doors & continuous stainless steel piano-style door hinge & pins. C500B: 129 in. BBC. 80 in. FA to BOC. T660B: 128 in. BBC. 80 in. FA to BOC. T800B: 127 in. BBC. 80 in. FA to BOC. W900B: 126 in. BBC. 96 in. FA to BOC.

W900L: 136in. BBC. 106 in. FA to BOC. Incandescent exterior lights include diagnosable bulb detection and warning. Trailer cable on tractors includes integrity detection. Standard features include multiplex wiring for interior lights, automated pre-trip inspection, short and open check diagnostics, and programmable daytime running lights. Warning alarm will sound when lights are left on.

Cab door bearing blocks, top & bottom.

Hood: T470 Sloped Hood for straight rail. Includes radiator mounted grille, split fenders, mud flaps, & separate bumper.

Cab heater: W/integral defrosters & A/C 45,000 btu cab heater. No sleeper heater/AC. Includes 5 mode rotary controls. T660 include filter media.

Steering wheel: 18 in. 4-spoke.

Adjustable telescoping tilt steering column.

PTO air control: On dash w/indicator light.

Information for customer-installed PTO Chelsea 277. 10-bolt. Available only with Allison 3000/4000 series transmissions.

Switch & Wiring for Customer-Installed PTO. Electric over hydraulic PTO. Includes switch guard. Wiring is routed to LH frame for connection to the customer installed PTO. No air controls are provided with this code.

Two spare switches: Wired to power.

KW Driver Information Center: Includes fuel economy, RPM display, trip information, truck information, diagnostics, gear display, alarm clock.

Instrument package: Includes speedometer, tachometer, fuel gauge, engine coolant temperature gauge, engine oil pressure, voltmeter. Class 8 also includes primary & secondary air reservoir gauges & an air application gauge. DEF level gauge and warning lamp are included with 2010+ engines. Engine hour meter and outside air temperature readouts are standard. Primary read out will be MPH. Add 8240620 to switch primary scale to KPH in Canada.

Large flat panel on dash For customer-installed controls. Reduces gauge count by 6.

Cab Interior: Summit. T440/T470 Only. Includes smooth upholstered side & back panels w/stitched accent lines, upholstered door pads, full vinyl headliner, black dash panels & black rubber floor mats.

Interior color: Slate Gray w/trim Dark Slate Gray

Driver seat: Kenworth Air cushion Plus HB vinyl. Standard features includes 7 in. fore and aft slide adjustment w/isolator, 6- 23 degree recline, air suspension with cover, dual armrests, and single chamber air lumbar support. Seat cushion is 20 inches wide w/ 2-position tilt and 2-position front cushion extension. Seat material has a horizontal stitch pattern and is 2-tone in color. Seat back is carpeted and includes a map pocket. Seat is manufactured by National. Includes inside visor and retractable 3-point matching seat belts. Grey seat belts.

Rider seat: Kenworth Toolbox Plus HB vinyl. Standard features include fixed base and backrest, tool box seat base w/door, and dual armrests. Seat cushion is 19.5 inches. Seat material has a horizontal stitch pattern and is 2-tone in color. Seat back is carpeted with a map pocket. Seat is

manufactured by National. Includes inside visor and retractable 3-point matching seat belts. Grey seat belts.

Seat color: Dark Slate Gray.

Kenworth Radio with AM/FM/WB

Under dash center console: Includes one cup holder & two 12V outlets. For use w/Autoshift, Ultrashift, & Allison Gen IV only.

Non-self cancelling turn signal: W/column-mounted headlight dimmer switch & intermittent wiper control.

Electric LH & RH door locks.

Cab access contoured grabhandles, LH/RH.

Grabhandle LH inside door frame above dash.

Grabhandle RH inside door frame above dash.

DAYLITE DOOR: LH/RH INCL RH PEEPER WINDOW

Single air horn under cab.

Look-Down, Pass. Door, Stainless 8.5x4.4

Mirror: Dual Prutsman mirror 7 in. x 16 in. polished stainless steel, and non-heated.

Mirror brackets 8-1/2 ft load width.

Rear Cab Stationary Window 17 in. x 36 in.

Manual LH & electric-powered RH door window. Switch located on door.

One-piece windshield, w/ curved glass.

2 in. rubber wheelwell fender extension.

Link Cabmate suspension.

Lights & Instruments

Headlamps: Halogen Projector Low Beam, Halogen Complex Reflector High Beam

Marker Lights: with small round base, Five cab roof mounted.

Turn Signal Lights: Mounted on fender

Combination Stop, Tail, Turn & Backup Lights RH & LH.

Daytime Running Lamps.

Marker Lights: Interrupter Switch. Included in Turn Signal For All Models Except T3. The T3 Switch Is In The Dash.

Wiring Only: For customer-installed backup alarm.

Circuit Breakers: Replacing fuses. Does not apply to any 5-amp fuse box position. Breakers include stop/brake/turn, tail lamp, high & low beams, marker/clearance lamps, horn, fuel heat, gauges, air dryer, HVAC controls, panel lamps. Some circuits will remain fuses.

Air Equipment

Air Dryer: Bendix AD-IS heated.

Moisture ejection valve w/ pull cable drain.

Nylon air tubing in frame & cab, excluding hoses subject to excessive heat or flexing.

Air tanks: clear of transmission area Clear area - forward of transmission yoke C/L

Extended Warranty

Standard Warranty.

GHG Secondary Manufacturer: Does Not Apply

Paint

Paint color number.

N97020 A - L0006 WHITE N97200 FRAME

N0001

BLACK

Day Cab Standard Paint

1 - Color Paint - Day Cab Color will be White if no other color is specified.

Base coat/clear coat. ELITE WHITE

DATE: 10/05/2016

INVITATION TO BID
THIS IS NOT AN ORDER

Page: 1

BID NO.: 50-00117853

JEFFERSON PARISH
PURCHASING DEPARTMENT
P.O. BOX 9
GRETNA, LA. 70054-0009
504-364-2678

BUYER: MCamardelle@jeffparish.net

BIDS WILL BE RECEIVED IN THE PURCHASING DEPARTMENT, SUITE 4400, JEFFERSON PARISH GENERAL GOVERNMENT BUILDING, 200 DERBIGNY STREET, GRETNA, LA 70053 UNTIL 2:00 PM, 10/20/2016 AND PUBLICLY OPENED THEREAFTER.

LATE BIDS WILL NOT BE ACCEPTED

Unless submitting via online (see Page 3), each bid must be submitted in a sealed envelope bearing on the outside; the name of the Bidder, his address, and the name of the project for which the bid is submitted and the bid number.

NOTE: ONLY BIDS WRITTEN IN INK OR TYPEWRITTEN, AND PROPERLY SIGNED BY A MEMBER OF THE FIRM OR AUTHORIZED REPRESENTATIVE, WILL BE ACCEPTED. PENCIL AND/OR PHOTOSTATIC FIGURES OR SIGNATURES SHALL RESULT IN BID REJECTION.

INSTRUCTIONS FOR BIDDERS AND GENERAL CONDITIONS
THE FOLLOWING INSTRUCTIONS APPLY TO ALL BIDS

All bids submitted are subject to these instructions and general conditions and any special conditions and specifications contained herein, all of which are made part of this bid proposal reference. By submitting a bid, vendor agrees to comply with all provisions of Louisiana Law as well be in compliance with the Jefferson Parish Code of Ordinances, Louisiana Code of Ethics, applicable Jefferson Parish ethical standards and Jefferson Parish Resolution No. 113646 and/or Resolution No. 113647.

All vendors submitting bids should register as a Jefferson Parish vendor if not already yet registered. Registration forms may be downloaded from www.purchasing.jeffparish.net and by clicking on Vendor Information. While Jefferson Parish may have these on file, all bidders should furnish their current W-9 Form and respective Tax Identification Numbers with bid submission; records on file may be invalid or expired. The successful bidder must submit a W-9 Form and respective Tax Identification Number upon contract execution. Failure to do so may result in delay of payment.

All quotations shall be based on F.O.B. Agency warehouse or job site, anywhere within the Parish as designated by the Purchasing Department. This provision does not apply to public works projects

JEFFERSON PARISH requires all products to be new (current) and all work must be performed according to standard practices for the project. Unless otherwise specified, no aftermarket parts will be accepted. Unless otherwise specified, all workmanship and materials must have at least one (1) year guaranty, in writing, from the date of delivery and/or acceptance of the project. Any deviations or alterations from the specifications must be indicated and/or supporting documentation supplied with bid submission.

Bidders should submit all questions in writing and fax them to the Purchasing Department at (504) 364-2693 no later than FIVE (5) working days prior to bid opening. Bid numbers should be mentioned in all requests. Questions may also be emailed to the buyer for this bid at the email address listed above. If submitting online, vendors may send questions via the E-Procurement site no later than Five (5) working days prior to the bid opening.

If this bid requires a pre-bid conference (see Additional Requirements section), bidders are advised that such conference will be held to allow bidders the opportunity to identify any discrepancies in the bid specifications and seek further clarification regarding instructions. The Purchasing Department will issue a written response to bidders' questions in the form of an Addendum. Please note that all official communication will be expressed in the form of an addendum.

All formal Addenda require written acknowledgement on the bid form by the bidder. Failure to acknowledge an Addendum on the bid form shall cause the bid to be rejected. JEFFERSON PARISH reserves the right to award bid to next lowest responsive and responsible bidder in this event.

The purpose and intention of this invitation to bid is to afford all suppliers an equal opportunity to bid on all construction, maintenance, repair, operating supplies and/or equipment listed in this bid proposal. JEFFERSON PARISH WILL ACCEPT ONE BID ONLY FROM EACH VENDOR. Items bid must meet specifications.

Visit our website at [HTTP://PURCHASING.JEFFPARISH.NET](http://PURCHASING.JEFFPARISH.NET)

JEFFERSON PARISH will accept one price for each item unless otherwise indicated. Two or more prices for one item will result in bid rejection. Bidders are required to complete, sign and return the bid form and/or complete and return the associated line item pricing forms as indicated. Vendors must not alter the bid forms. Doing so will cause the bid to be rejected.

If the bid exceeds \$30,000.00 and the company is duly authorized to do business in the state of Louisiana, a corporate resolution must be submitted with the bid or the person signing the bid documents must be listed on the Louisiana Secretary of State's website as an officer of the corporation, unless bidder has otherwise complied with LSA-R.S. 38:2212 (B)(5). If the bid is in excess of \$30,000 and bidder is registered out of the state of Louisiana, a corporate resolution must be submitted with the bid, unless bidder has otherwise complied with LSA-R.S. 38:2212 (B)(5). Failure to comply will cause bid to be rejected; the Parish reserves the right to award bid to the next lowest responsive and responsible bidder in this event. Bids submitted by Owner or Sole Proprietorships must include certification that he or she owns the entity for which the bid is signed. This documentation must be submitted with the bid. Failure to do so will result in bid rejection.

NOTE: A sample corporate resolution can be downloaded from our website <http://purchasing.jeffparish.net> or you may provide your own document. A sample certification of sole proprietorship can also be downloaded from our website <http://purchasing.jeffparish.net> or you may provide your own document.

INSTRUCTIONS FOR BIDDERS AND GENERAL CONDITIONS

A. AWARD OF CONTRACT: JEFFERSON PARISH reserves the right to award contracts or place orders on a lump sum or individual item basis, or such combination, as shall in its judgment be in the best interest of JEFFERSON PARISH. Every contract or order shall be awarded to the LOWEST RESPONSIVE and RESPONSIBLE BIDDER, taking into consideration the CONFORMITY WITH THE SPECIFICATIONS and the DELIVERY AND/OR COMPLETION DATE. SPLIT AWARDS MADE TO SEVERAL VENDORS WILL ONLY BE GRANTED TO THOSE DEEMED RESPONSIVE AND RESPONSIBLE.

All bid prices shall remain valid for 45 days. Jefferson Parish and the lowest responsive and responsible bidder(s) by mutual written consent may mutually agree to extend the deadline for award by one (1) or more extensions of thirty (30) calendar days.

Preference is hereby given to materials, supplies, and provisions produced, manufactured or grown in Louisiana, quality being equal to articles offered by competitors outside the state. "LSA-R.S.38:2251-2261"

B. USE OF BRAND NAMES AND STOCK NUMBERS: Where brand names and stock numbers are specified, it is for the purpose of establishing certain minimum standards of quality. Bids may be submitted for products of equal quality, provided brand names and stock numbers are specified. Complete product data may be required prior to award.

C. CANCELLATION OF CONTRACT: JEFFERSON PARISH reserves the right to cancel all or any part if not shipped promptly. No charges will be allowed for parking or cartage unless specified in quotation. The order must not be filled at a higher price than quoted. JEFFERSON PARISH reserves the right to cancel any contract at anytime and for any reason by issuing a THIRTY (30) day written notice to the contractor.

For good cause and as consideration for executing a contract with Jefferson Parish, vendor conveys, sells, assigns, and transfers to Jefferson Parish or its assigns all rights, title and interest in and to all causes of action it may now or hereafter acquire under the antitrust laws of the United States and the State of Louisiana, relating to the particular good or services purchased or acquired by Jefferson Parish.

D. PRICES: Jefferson Parish is exempt from paying sales tax under LSA-R.S. 47:301 (8)(c). All prices for purchases by Jefferson Parish of supplies and materials shall be quoted in the unit of measure specified and unless otherwise specified, shall be exclusive of state and Parish taxes. The price quoted for work shall be stated in figures. In the event there is a difference in unit prices and totals, the unit price shall prevail.

Quantities listed are for bidding purposes only. Actual requirements may be more or less than quantities listed.

Bidders are not to exclude from participation in, deny the benefits of, or subject to discrimination under any program or activity, any person in the United States on the grounds of race, color, national origin, or sex; nor discriminate on the basis of age under the Age Discrimination Act of 1975, or with respect to an otherwise qualified handicapped individual as provided in Section 504 of the Rehabilitation Act of 1973, or on the basis of religion, except that any exemption from such prohibition against discrimination on the basis of religion as provided in the Civil Rights Act of 1964, or Title VI and VII of the Act of April 11, 1968, shall also apply. This assurance includes compliance with the administrative requirements of the Revenue Sharing final handicapped discrimination provisions contained in Section 51.55 (c), (d), (e), and (k)(5) of the Regulations. New construction or renovation projects must comply with Section 504 of the 1973 Rehabilitation Act, as amended, in accordance with the American National Standard Institute's specifications (ANSI A17.1-1961).

Advertised bids will be tabulated and a copy of the tabulation will be forwarded to each responding bidder.

IN ACCORDANCE WITH STATE REGULATIONS JEFFERSON PARISH OFFERS ELECTRONIC PROCUREMENT TO ALL VENDORS

This electronic procurement system allows vendors the convenience of reviewing and submitting bids online. This is a secure site and authorized personnel have limited read access only. Bidders are encouraged to submit electronically using this free service; while the website accepts various file types, one single PDF file containing all appropriate and required bid documents is preferred. Bidders submitting uploaded images of bid responses are solely responsible for clarity. If uploaded images/documents are not legible, then bidder's submission will be rejected. Please note all requirements contained in this bid package for electronic bid submission.

Please visit the Purchasing Department webpage at <http://purchasing.jeffparish.net> to register and review Jefferson Parish solicitations.

The general specifications for construction projects and the purchase of materials, services and/or supplies are those adopted by the JEFFERSON PARISH Council by Resolution No. 113646 or 113647 dated 12/09/09. The general conditions adopted by this resolution shall be considered as much a part of this document as if they were written wholly herein. A copy may be obtained from the Office of the Parish Clerk, Suite 6700, Jefferson Parish General Government Building, 200 Derbigny Street, Gretna, LA 70053. You may also obtain a copy by visiting the Purchasing Department webpage at <http://purchasing.jeffparish.net> and clicking on Online Forms.

ADDITIONAL REQUIREMENTS FOR THIS BID

PLEASE MATCH THE NUMBERS PRINTED IN THIS BOX WITH THE CORRESPONDING INSTRUCTIONS BELOW.

13, 15

1. All bidders must attend the MANDATORY pre-bid conference and will be required to sign in and out as evidence of attendance. In accordance with LSA R.S. 38:2212(I), all prospective bidders shall be present at the beginning of the MANDATORY pre-bid conference and shall remain in attendance for the duration of the conference. Any prospective bidder who fails to attend the conference or remain for the duration shall be prohibited from submitting a bid for the project.
2. Attendance to this pre-bid conference is optional. However, failure to attend the pre-bid conference shall not relieve the bidder of responsibility for information discussed at the conference. Furthermore, failure to attend the pre-bid conference and inspection does not relieve the successful bidder from the necessity of furnishing materials or performing any work that may be required to complete the work in accordance with the specification with no additional cost to the owner.
3. Contractor must hold current applicable JEFFERSON PARISH licenses with the Department of Inspection and Code Enforcement. Contractor shall obtain any and all permits required by the JEFFERSON PARISH Department of Inspection and Code Enforcement. The contractor shall be responsible for the payment of these permits. All permits must be obtained prior to the start of the project. Contractor must also hold any and all applicable Federal and State licenses. Contractor shall be responsible for the payment of these permits and shall obtain them prior to the start of the project.
4. A LA State Contractor's License will be required in accordance with LSA R.S. 37-2150 et. seq. and such license number will be shown on the outside of the bid envelope. Failure to comply will cause the bid to be rejected. Additionally if submitting the bid electronically, then the license number must be entered in the appropriate field in the Electronic Procurement system. Failure to comply will cause the bid to be rejected.
5. It is the bidder's responsibility to visit the job site and evaluate the job before submitting a bid.
6. Job site must be clean and free of all litter and debris daily and upon completion of the contract. Passageways must be kept clean and free of material, equipment, and debris at all times. Flammable material must be removed from the job site daily because storage will not be permitted on the premises. Precautions must be exercised at all times to safeguard the welfare of JEFFERSON PARISH and the general public.

INSTRUCTIONS FOR BIDDERS AND GENERAL CONDITIONS

7. **PUBLIC WORKS BIDS:** All awards for public works in excess of \$5,000.00 will be reduced to a formal contract which shall be recorded at the contractor's expense with the Clerk of Court and Ex-Officio Recorder of Mortgages for the Parish of Jefferson. A price list of recordation costs may be obtained from the Clerk of Court and Ex-Officio Recorder of Mortgages for the Parish of Jefferson. All awards in excess of \$25,000.00 will require both a performance and a payment bond. Unless otherwise stated in the bid specifications, the performance bond requirements shall be 100% of the contract price. Unless otherwise state in the bid specifications, the payment bond requirements shall be 100% of the contract price. Both bonds shall be supplied at the signing of the contract.
8. **NON-PUBLIC WORKS BIDS:** A performance bond will be required for this bid. The amount of the bond will be 100% of the contract price unless otherwise indicated in the specifications. The performance bond shall be supplied at the signing of the contract.
9. **NON-PUBLIC WORKS BIDS:** A payment bond will be required for this bid. The amount of the bond will be 100% of the contract price unless otherwise indicated in the specifications. The payment bond shall be supplied at the signing of the contract.
10. Unless otherwise stated in the bid specifications, the successful bidder will be required to procure standard insurance policies evidencing Parish-mandated insurance requirements as indicated on the attached "insurance requirements" sheet. All bidders must comply with the instructions in this sheet. Failure to comply will cause bid to be rejected.
11. A bid bond will be required with bid submission in the amount of 5% of the total bid, unless otherwise stated in the bid specifications. Acceptable forms shall be limited to cashier's check, certified check, or surety bid bond. All sureties must be in original format (no copies) If submitting a bid online, vendors must submit an electronic bid bond through the respective online clearinghouse bond management system(s) as indicated in the electronic bid solicitation on Central Auction House. No scanned paper copies of any bid bond will be accepted as part of the electronic bid submission.
12. This is a requirements contract to be provided on an as needed basis. JEFFERSON PARISH makes no representations on warranties with regard to minimum guaranteed quantities unless otherwise stated in the bid specifications.
13. Freight charges should be included in total cost when quoting. If not quoted FOB DELIVERED, freight must be quoted as a separate item. Bid may be rejected if not quoted FOB DELIVERED or if freight charges are not indicated on bid form.
14. **PUBLIC WORKS BIDS - Completed, Signed and Properly Notarized Affidavits Required;** This applies to all solicitations for construction, alteration or demolition of public buildings or projects, in conformity with the provisions contained in LSA-RS 38:2212.9, LSA-RS 38:2212.10, LSA-RS 38:2224, and Sec 2-923.1 of the Jefferson Parish Code of Ordinances. For bidding purposes, all bidders must submit with bid submission COMPLETED, SIGNED and PROPERLY NOTARIZED Affidavits, including: Non-Conviction Affidavit, Non-Collusion Affidavit, Campaign Contribution Affidavit, Debt Disclosures Affidavit and E-Verify Affidavit. For the convenience of vendors, all affidavits have been combined into one form entitled PUBLIC WORKS BID AFFIDAVIT. This affidavit must be submitted in its original format, and without material alteration, in order to be compliant and for the bid to be considered responsive. A scanned copy of the completed, signed and properly notarized affidavit may be submitted with the bid, however, the successful bidder must submit the original affidavit in its original format and without material alteration upon contract execution. Failure to comply will result in the bid submission being rejected as non-responsive. The Parish reserves the right to award bid to the next lowest responsive and responsible bidder in this event.
15. **NON PUBLIC WORK BIDS - Completed, Signed and Properly Notarized Affidavits Required** in conformity with the provisions contained in LSA – RS 38:2224 and Sec 2-923.1 of the Jefferson Parish Code of Ordinances. For bidding purposes, all bidders must submit with bid submission COMPLETED, SIGNED and PROPERLY NOTARIZED Affidavits, including: Non-Collusion Affidavit, Debt Disclosures Affidavit and Campaign Contribution Affidavit. For the convenience of vendors, all affidavits have been combined into one form entitled NON PUBLIC WORKS BID AFFIDAVIT. This affidavit must be submitted in its original format, and without material alteration, in order to be compliant and for the bid to be considered responsive. A scanned copy of the completed, signed and properly notarized affidavit may be submitted with the bid, however, the successful bidder must submit the original affidavit in its original format and without material alteration upon contract execution. Failure to comply will result in the bid submission being rejected as non-responsive. The Parish reserves the right to award bid to the next lowest responsive and responsible bidder in this event.
16. The ensuing contract for this bid solicitation may be eligible for FEMA reimbursement and/or Federal funding/reimbursement. As such, the referenced appendix will be applicable accordingly and shall be considered a part of the bid documents. All applicable certifications must be duly completed, signed and submitted with bid submission. Failure to submit applicable certifications with bid submission will result in bid rejection.
17. For this project, the Contractor shall not pay any state or local sales or use taxes on materials and equipment which are affixed and made part of the immovable property of the project or which permanently incorporated in the project (hereinafter referred to as "applicable materials and equipment"). All purchases of applicable materials or equipment shall be made by the contractor on behalf of and as the agent of Jefferson Parish (Owner), a political subdivision of the State of Louisiana. No state and local sales and use taxes are owned on applicable materials and equipment under the provisions of Act 1029 of the 1991 Regular Session – Louisiana Revised Statute 47:301(8)(c). Owner will furnish contractor a certificate form which certifies that Owner is not required to pay such state or local sales and use taxes, and contractor shall furnish a copy of such certificate to all vendors or suppliers of the applicable materials and equipment

It shall be the duty of every parish officer, employee, department, agency, special district, board, and commission: and the duty of every contractor, subcontractor, and licensee of the parish, and the duty of every applicant for certification of eligibility for a parish contract or program, to cooperate with the Inspector General in any investigation, audit, inspection, performance review, or hearing pursuant to Jefferson Parish Code of Ordinances Section 2-155.10(19). By submitting a bid, vendor acknowledges this and will abide by all provisions of the referenced Jefferson Parish Code of Ordinances.

All Public Work Projects are required to use the Louisiana Uniform Public Work Bid Form

All prices must be held firm unless an escalation provision is requested in this bid. Jefferson Parish will allow one escalation during the term of the contract, which may not exceed the U.S. Bureau of Labor Statistics National Index for all Urban Consumers, unadjusted 12 month figure. The most recently published figure issued at the time an adjustment is requested will be used. A request must be made in writing by the vendor, and the escalation will only be applied to purchases made after the request is made.

Are you requesting an escalation provision?

YES _____ NO ✓

MAXIMUM ESCALATION PERCENTAGE REQUESTED _____ %

INITIAL BID PRICES WILL REMAIN FIRM THROUGH THE DATE OF October 20, 2017.

For the purposes of comparison of bids when an escalation provision is requested, Jefferson Parish will apply the maximum escalation percentage quoted by the bidder to the period to which it is applied in the bid. The initial price and the escalation will be used to calculate the total bid price. It will be assumed, for comparison of prices only, that an equal amount of material or labor is purchased each month throughout the entire contract.

DELIVERY: FOB JEFFERSON PARISH

INDICATE DELIVERY DATE ON EQUIPMENT AND SUPPLIES

120-180 Days A.R.O.

LOUISIANA CONTRACTOR'S LICENSE NO.: (if applicable)

N/A**THIS SECTION MUST BE COMPLETED BY BIDDER:**FIRM NAME: Covington Sales & Service, Inc.ADDRESS: P.O. Box 1144 (7868 Florida Blvd. 70726)CITY, STATE: Denham Springs, LA ZIP: 70727TELEPHONE: (800) 349-8000 FAX: (225) 665-1567EMAIL ADDRESS: pata@covingtonsales.com

In the event that addenda are issued with this bid, bidders MUST acknowledge all addenda on the bid form. Bidder must acknowledge receipt of an addendum on the bid form as indicated. Failure to acknowledge any addendum on the bid form will result in bid rejection.

Acknowledge Receipt of Addenda: NUMBER: None

NUMBER: _____

NUMBER: _____

NUMBER: _____

TOTAL PRICE OF ALL BID ITEMS: \$ 365,875.00AUTHORIZED SIGNATURE: Chris KinchenTITLE: PresidentChris Kinchen

Printed Name

SIGNING INDICATES YOU HAVE READ AND COMPLY WITH THE INSTRUCTIONS AND CONDITIONS.

NOTE: All bids should be returned with the BID NUMBER and BID OPENING DATE indicated on the outside of the envelope submitted to the Purchasing Department.

INVITATION TO BID FROM JEFFERSON PARISH - continued

BID NO.: 50-00117853

SEALED BID

ITEM NUMBER	QUANTITY	U/M	DESCRIPTION OF ARTICLES	UNIT PRICE QUOTED	TOTALS
1	1.00	ONLY	<p>PURCHASE OF A COMBINATION SEWER CLEANER TRUCK FOR THE JEFFERSON PARISH DEPARTMENT OF DRAINAGE</p> <p>0010 Vac-Con Combination Unit Model: Kenworth Series T-400-Series Truck and Chassis T470 4x2 Medium Duty Specs Attached Combination Sewer Cleaner model PD4290H/1000 (827 at 18in.) Specifications Attached</p>	<p># 365,875.00</p>	<p># 365,875.00</p>

CORPORATE RESOLUTION

EXCERPT FROM MINUTES OF MEETING OF THE BOARD OF DIRECTORS OF
Covington Sales & Service
INCORPORATED.

AT THE MEETING OF DIRECTORS OF Covington Sales & Service,
INCORPORATED, DULY NOTICED AND HELD ON December 12, 2012,
A QUORUM BEING THERE PRESENT, ON MOTION DULY MADE AND SECONDED. IT
WAS:

RESOLVED THAT Chris Kinchen, President, BE AND IS HEREBY
APPOINTED, CONSTITUTED AND DESIGNATED AS AGENT AND ATTORNEY-IN-
FACT OF THE CORPORATION WITH FULL POWER AND AUTHORITY TO ACT ON
BEHALF OF THIS CORPORATION IN ALL NEGOTIATIONS, BIDDING, CONCERNS
AND TRANSACTIONS WITH THE PARISH OF JEFFERSON OR ANY OF ITS AGENCIES,
DEPARTMENTS, EMPLOYEES OR AGENTS, INCLUDING BUT NOT LIMITED TO, THE
EXECUTION OF ALL BIDS, PAPERS, DOCUMENTS, AFFIDAVITS, BONDS, SURETIES,
CONTRACTS AND ACTS AND TO RECEIVE ALL PURCHASE ORDERS AND NOTICES
ISSUED PURSUANT TO THE PROVISIONS OF ANY SUCH BID OR CONTRACT, THIS
CORPORATION HEREBY RATIFYING, APPROVING, CONFIRMING, AND ACCEPTING
EACH AND EVERY SUCH ACT PERFORMED BY SAID AGENT AND ATTORNEY-IN-
FACT.

I HEREBY CERTIFY THE FOREGOING TO BE
A TRUE AND CORRECT COPY OF AN
EXCERPT OF THE MINUTES OF THE ABOVE
DATED MEETING OF THE BOARD OF
DIRECTORS OF SAID CORPORATION, AND
THE SAME HAS NOT BEEN REVOKED OR
RESCINDED.

Jacquelyn C. Covington
SECRETARY-TREASURER

October 19, 2016

DATE

Non-Public Works Bid Affidavit Instructions

- **Affidavit is supplied as a courtesy to Affiants, but it is the responsibility of the affiant to insure the affidavit they submit to Jefferson Parish complies, in both form and content, with federal, state and parish laws.**
- **Affidavit must be signed by an authorized representative of the entity or the affidavit will not be accepted.**
- **Affidavit must be notarized or the affidavit will not be accepted.**
- **Notary must sign name, print name, and include bar/notary number, or the affidavit will not be accepted.**
- **Affiant MUST select either A or B when required or the affidavit will not be accepted.**
- **Affiants who select choice A must include an attachment or the affidavit will not be accepted.**
- **If both choice A and B are selected, the affidavit will not be accepted.**
- **Affidavit marked N/A will not be accepted.**
- **It is the responsibility of the Affiant to submit a new affidavit if any additional campaign contributions are made after the affidavit is executed but prior to the time the council acts on the matter.**

Instruction sheet may be omitted when submitting the affidavit

Non-Public Works Bid**AFFIDAVIT**STATE OF LouisianaPARISH/COUNTY OF Livingston

BEFORE ME, the undersigned authority, personally came and appeared: Chris
Kinchen, (Affiant) who after being by me duly sworn, deposed and said that
he/she is the fully authorized President of Covington Sales & Service, Inc. (Entity),
the party who submitted a bid in response to Bid Number 50-00117853 to the Parish of
Jefferson.

Affiant further said:

Campaign Contribution Disclosures

(Choose A or B, if option A is indicated please include the required attachment):

Choice A _____ Attached hereto is a list of all campaign contributions, including the date and amount of each contribution, made to current or former elected officials of the Parish of Jefferson by Entity, Affiant, and/or officers, directors and owners, including employees, owning 25% or more of the Entity during the two-year period immediately preceding the date of this affidavit or the current term of the elected official, whichever is greater. Further, Entity, Affiant, and/or Entity Owners have not made any contributions to or in support of current or former members of the Jefferson Parish Council or the Jefferson Parish President through or in the name of another person or legal entity, either directly or indirectly.

Choice B ✓ there are **NO** campaign contributions made which would require disclosure under Choice A of this section.

Debt Disclosures

(Choose A or B, if option A is indicated please include the required attachment):

Choice A _____ Attached hereto is a list of all debts owed by the affiant to any elected or appointed official of the Parish of Jefferson, and any and all debts owed by any elected or appointed official of the Parish to the Affiant.

Choice B ✓ There are **NO** debts which would require disclosure under Choice A of this section.

Affiant further said:

That Affiant has employed no person, corporation, firm, association, or other organization, either directly or indirectly, to secure the public contract under which he received payment, other than persons regularly employed by the Affiant whose services in connection with the construction, alteration or demolition of the public building or project or in securing the public contract were in the regular course of their duties for Affiant; and

[The remainder of this page is intentionally left blank.]

That no part of the contract price received by Affiant was paid or will be paid to any person, corporation, firm, association, or other organization for soliciting the contract, other than the payment of their normal compensation to persons regularly employed by the Affiant whose services in connection with the construction, alteration or demolition of the public building or project were in the regular course of their duties for Affiant.



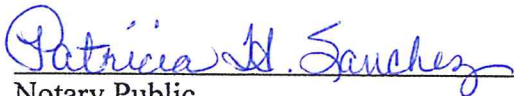
Signature of Affiant



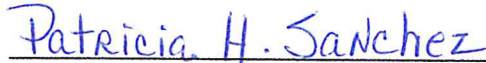
Printed Name of Affiant

SWORN AND SUBSCRIBED TO BEFORE ME

ON THE 19th DAY OF October, 2016.



Notary Public



Printed Name of Notary



Notary/Bar Roll Number

My commission expires with death.

[Print](#)

Notary Search - Detail

Name: MS. PATRICIA H. SANCHEZ
Address: 19119 CORY ROAD
LORANGER, LA 70446

Phone: (985) 606-0354
Phone 2: (985) 320-9882

Notary ID Number: 51225

Parish: TANGIPAHOA with authority in the following parishes:
LIVINGSTON, ST. HELENA

Agency: N/A

Notary Type: Non Attorney

Status: Active

Commission Date: 10/09/2000

Oath Date: 09/29/2000

Surety Expiration Date: 09/13/2020

Annual Report Current: Yes

Notary Events

Suspension From: 09/15/2015 To: 09/29/2015

Suspension From: 12/09/2014 To: 01/27/2015

Name Change Previous Name: PATRICIA H. BERGERON
Previous Commission Date: 09/25/1995

Deceased, Inactivated, Leave of Absence, Pre-Assessment Registration, Pre-Assessment Taken, Resigned, Retirement, and Revoked events are not available prior to February 11, 2012.

[Back to Search Results](#)[New Search](#)

License No. RP-2016-00211
DPS Code: RDCC

2016-2018

Not Transferable
Valid Only at Address Below

Louisiana Motor Vehicle Commission

This Certifies that

Covington Sales & Service, Inc.
7868 Florida Boulevard
Denham Springs, LA 70726

Raymond E. Covington & Chris Kinchen, Dealer-Operators

is duly licensed as a

Recreational Product(s) Dealer

of the following

Conversion(s): CUES, Duraco, PB Loader, PipeHunter, Schwarze, Tiger, VAC-CON, VT LeeBoy
Utility Trailer(s): Cimline (Metro, Magma, Matrix II), Cimline (Metro, Magma, Matrix II)
Cues Custom Inspection Units (Cust Waterline Inspection Unit)
Cues Custom Inspection Units (Cust Waterline Inspection Unit), Dura Patcher
(Dura Patcher 125DJT, Dura Box Asphalt Maintainer, 1000gal Duratonic Model 1000TT)
Dura Patcher (Dura Patcher 125DJT, Dura Box Asphalt Maintainer
1000gal Duratonic Model 1000TT), Environmental Bagging System (EBS-D-S)
Environmental Bagging System (EBS-D-S), Texas Underground (Single Axle Trailer Jet
Tandem Axle Trailer Jet, Vacuum Trailer, Combination Vacuum/Camera), Texas Underground

CONTINUES ON NEXT PAGE

For the period ending May 31, 2018,

unless license is sooner revoked.

In Witness whereof, LOUISIANA MOTOR VEHICLE COMMISSION, under and by virtue of the
authority vested in it by the laws of the State of Louisiana, has caused this license to be issued with its seal
imprinted hereon.

LOUISIANA MOTOR VEHICLE COMMISSION

Dated June 30, 2016
Signed, Sealed and Attested


Executive Director


Chairman

(To be prominently displayed in place of business)



License No: RP-2016-00211
DPS Code: RDCC

2016-2018

Page: 2

Covington Sales & Service, Inc.

CONTINUED

(Single Axle Trailer Jet, Tandem Axle Trailer Jet, Vacuum Trailer
Combination Vacuum/Camera), VT LeeBoy (Asphalt Distributor - RMT1000), VT LeeBoy
(Asphalt Distributor - RMT1000)



Form **W-9**

(Rev. November 1999)

Department of the Treasury
Internal Revenue Service**Request for Taxpayer
Identification Number and Certification**Give form to the
requester. Do NOT
send to the IRS.

Please print or type

Name (If a joint account or you changed your name, see Specific Instructions on page 2.)

Business name, if different from above. (See Specific Instructions on page 2.)

Couington Sales & Service IncCheck appropriate box: ☐ Individual/Sole proprietor ☒ Corporation ☐ Partnership ☐ Other

Address (number, street, and apt. or suite no.)

7868 Florida Blvd.

City, state, and ZIP code

Dunham Springs, La. 70726

Requester's name and address (optional)

Part I Taxpayer Identification Number (TIN)

Enter your TIN in the appropriate box. For individuals, this is your social security number (SSN). However, if you are a resident alien OR a sole proprietor, see the instructions on page 2. For other entities, it is your employer identification number (EIN). If you do not have a number, see How to get a TIN on page 2.

Note: If the account is in more than one name, see the chart on page 2 for guidelines on whose number to enter.

Social security number

OR

Employer identification number

72-0995795

List account number(s) here (optional)

Part II For Payees Exempt From Backup Withholding (See the instructions on page 2.)**Part III Certification**

Under penalties of perjury, I certify that:

- The number shown on this form is my correct taxpayer identification number (or I am waiting for a number to be issued to me) and
- I am not subject to backup withholding because: (a) I am exempt from backup withholding, or (b) I have not been notified by the Internal Revenue Service (IRS) that I am subject to backup withholding as a result of a failure to report all interest or dividends, (c) the IRS has notified me that I am no longer subject to backup withholding.

Certification instructions. You must cross out item 2 above if you have been notified by the IRS that you are currently subject to backup withholding because you have failed to report all interest and dividends on your tax return. For real estate transactions, item 2 does not apply. For mortgage interest paid, acquisition or abandonment of secured property, cancellation of debt, contributions to an individual retirement arrangement (IRA), and generally, payments other than interest and dividends, you are not required to sign the Certification, but you must provide your correct TIN. (See the instructions on page 2.)

Sign
Here

Signature

Susan Lockhart

Date

10/19/16

Purpose of form. A person who is required to file an information return with the IRS must get your correct taxpayer identification number (TIN) to report, for example, income paid to you, real estate transactions, mortgage interest you paid, acquisition or abandonment of secured property, cancellation of debt, or contributions you made to an IRA.

Use Form W-9, if you are a U.S. person (including a resident alien), to give your correct TIN to the person requesting it (the requester) and, when applicable, to:

- Certify the TIN you are giving is correct (or you are waiting for a number to be issued).
- Certify you are not subject to backup withholding, or
- Claim exemption from backup withholding if you are an exempt payee.

If you are a foreign person, IRS prefers you use a Form W-8 (certificate of foreign status). After December 31, 2000, foreign persons must use an appropriate Form W-8.

Note: If a requester gives you a form other than Form W-9 to request your TIN, you must use the requester's form if it is substantially similar to this Form W-9.

What is backup withholding? Persons making certain payments to you must withhold and pay to the IRS 31% of such payments under certain conditions. This is called "backup withholding." Payments that may be subject to backup withholding include interest, dividends, broker and barter exchange transactions, rents, royalties, nonemployee pay, and certain payments from fishing boat operators. Real estate transactions are not subject to backup withholding.

If you give the requester your correct TIN, make the proper certifications, and report all your taxable interest and dividends on your tax return, payments you receive will not be subject to backup withholding. Payments you receive will be subject to backup withholding if:

- You do not furnish your TIN to the requester, or
- You do not certify your TIN when required (see the Part III instructions on page 2 for details), or
- The IRS tells the requester that you furnished an incorrect TIN, or
- The IRS tells you that you are subject to backup withholding because you did not report all your interest and dividends on your tax return (for reportable interest and dividends only), or

- You do not certify to the requester that you are not subject to backup withholding under 3 above (for reportable interest and dividend accounts opened after 1983 only).

Certain payees and payments are exempt from backup withholding. See the Part II instructions and the separate Instructions for the Requester of Form W-9.

Penalties

Failure to furnish TIN. If you fail to furnish your correct TIN to a requester, you are subject to a penalty of \$50 for each such failure unless your failure is due to reasonable cause and not to willful neglect.

Civil penalty for false information with respect to withholding. If you make a false statement with no reasonable basis that results in no backup withholding, you are subject to a \$500 penalty.

Criminal penalty for falsifying information. Willfully falsifying certifications or affirmations may subject you to criminal penalties including fines and/or imprisonment.

Misuse of TINs. If the requester discloses or uses TINs in violation of Federal law, the requester may be subject to civil and criminal penalties.



W a r r a n t y - Dual Engine PD

VAC-CON, as seller, warrants all equipment manufactured by it and bearing its name shall be free from defects in material and workmanship, under normal use and service as determined by us, for a period of (12) twelve months from the date of delivery to the first retail purchaser.

Should any equipment or part of such equipment sold hereunder prove to be defective in material or workmanship within said period, and be returned to Seller's factory no later than 15 days after the expiration date of the warranty, transportation charges prepaid by the Buyer, and upon examination be found to be defective, such part will be replaced at the factory by the Seller free of charge, but the Seller shall be under no further liability in respect to such warranty. It is expressly understood that the Seller's liability is limited to furnishing of such replacement parts within a reasonable length of time and that the Seller will not be liable for any damages, losses or expenses arising in connection with the use of or inability to use the unit(s), including but not limited to, injuries to persons or damage to property, loss of profits or anticipated profits, or loss of vehicle use. Buyer shall be responsible for the payment of duties or taxes on warranty parts, if applicable. The Seller shall be under no liability because of normal wear and tear of operation or maintenance contrary to the manufacturer's official Operator's Manual. The Buyer accepts any liability for damage or injury resulting from the removal or alteration of safety guards and safety precautions provided on the unit at the time of delivery. This warranty shall not apply and VAC-CON shall have no liability under it or otherwise if the unit shall have been injured by accident, careless handling or improper applications or if any repairs have been made to the unit by other than VAC-CON, its agents or employees.

Warranties covering major components not of VAC-CON manufacture (power plants, hydraulics, trucks, vacuum compressors, transmissions, electrical components, batteries, tires, etc.) are warranted by their respective manufacturers.

We give no warranty express or implied, as to description, quality, productiveness or any other matter and the Buyer hereby waives the right of refusal and return of the goods which is usually connected with non-warranty.

It is the sole responsibility of the purchaser to use this equipment in an appropriate application and a safe manner. VAC-CON assumes no responsibility or liability for its misuse.

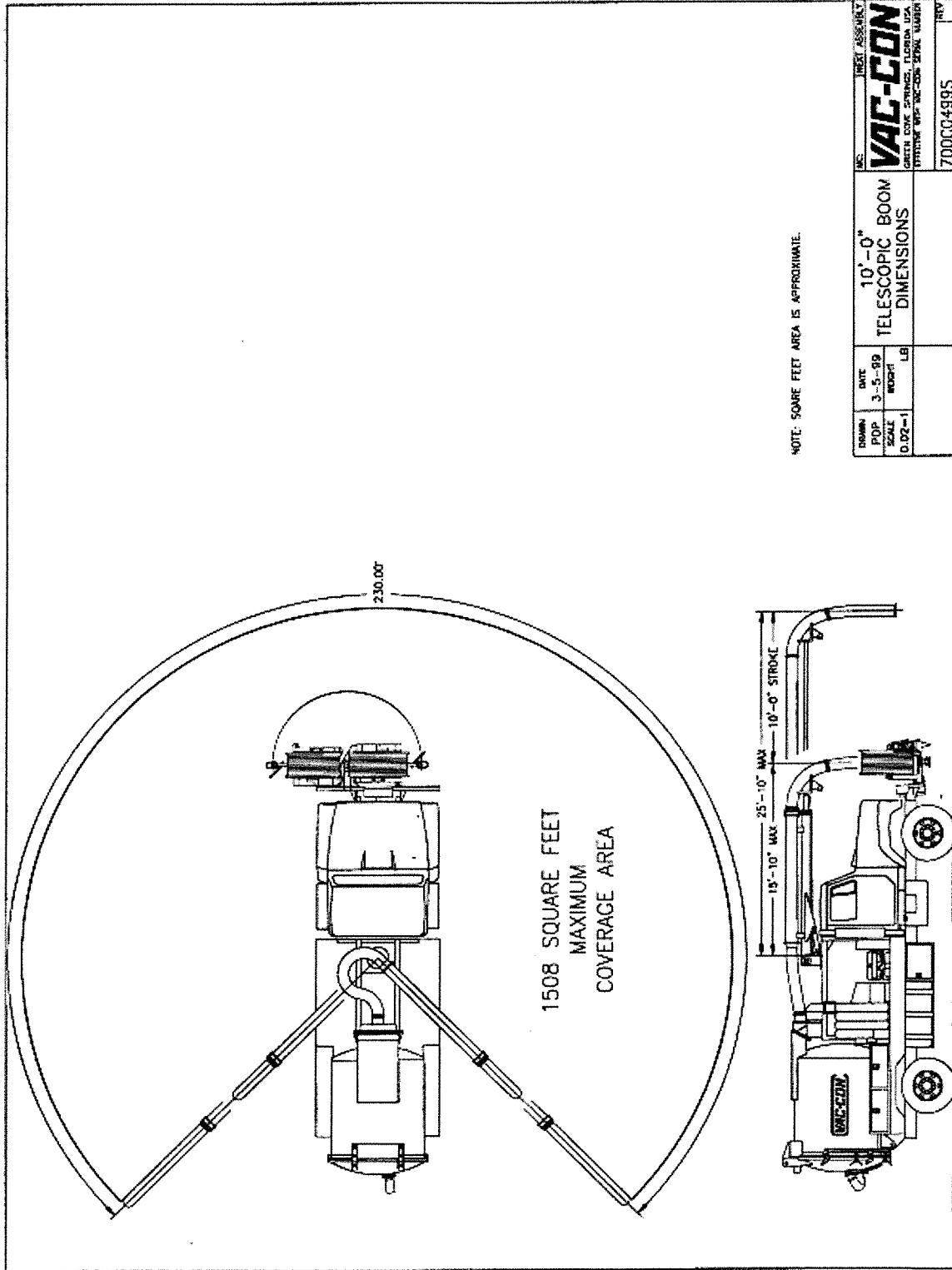
FIVE (5) YEAR WARRANTY:

VAC-CON warrants that the auxiliary engine water pump drive components (excluding engine and pump) and debris tank shall be free from defects in material and workmanship, under normal use and service as determined by the manufacturer, for a period of sixty (60) months (not pro-rated) from the date the unit is first placed into service.

TEN (10) YEAR WARRANTY:

VAC-CON warrants that the fresh water tanks shall be free from defects in material and workmanship, under normal use and service as determined by the manufacturer, for a period of one hundred twenty (120) months (not pro-rated) from the date the unit is first placed into service.

This warranty is not transferable.



NOTE: SQUARE FEET AREA IS APPROXIMATE.

DESIGN PDP SCALE 0.02=1	DATE 3-5-89 BY LB	10'-0" TELESCOPIC BOOM DIMENSIONS	REV 700CQ4995
----------------------------------	----------------------------	---	------------------

VAC-CON
GREEN COKE SPRINGS, FLORIDA USA
PRINTED AND ASSEMBLED IN USA



SPECIFICATIONS - COMBINATION SEWER CLEANER

PD4290H/1000 (827 at 18")

COMPLY, Indicate: Yes or No

GENERAL

☒ Yes ☐ No

The machine is capable of removing stones, grit, grease, sludge and other debris from sanitary sewer and/or storm drain lines by the flushing action of high-pressure water. The high-pressure sewer cleaner operates independent of the vacuum system. This unit shall have a total minimum of 550 Horse Power.

The machine includes an air conveying vacuum system to provide for the simultaneous removal of the debris flushed to the manhole by the high-pressure water system or for the removal of debris from sewers, sumps, catch basins, digesters, wet wells, bar screens, etc.

The machine is capable of being operated by one man, with all operating controls for high-pressure water pump, hose reel, and vacuum, located at the front of the machine for safety.

DEBRIS BODY

☒ Yes ☐ No

Debris storage body has a minimum usable liquid capacity of 9 cubic yards. The debris body shall be round for maximum strength and constructed of 3/16 inch ASTM A242 Corten A steel for enhanced corrosion resistance.

The rear door shall be dished and flanged for maximum strength, full opening, hinged at the top with low profile and adjustable style hinges.

There shall be a 6" diameter liquid drain valve, "knife valve type" and screen weldment inside for removing excess liquids. Drain will have 10 feet of 6 inch lay flat hose.

The rear door shall be supplied with a debris deflector shield located inside the debris tank that encompasses 75 percent of the rear door. The debris deflector shield shall deflect material from rear door, and aid in draining off excess liquids.

A rear door safety prop shall be provided. For ease of maintenance there shall be no hydraulic components located inside the debris body or rear door.

Hydraulic operated, heavy duty wedge style door locks shall be installed. The door locks shall be operated by two double acting hydraulic cylinders. The rear door shall also hydraulically open and close (raise and lower) by means of two double acting hydraulic cylinders. The unlocking-opening and the closing-locking operations shall be controlled by a single switch and sequence valve.

Dual steel weldments with stainless steel screen 8" x 28" each providing up to 1200 square inches of added filtration for the vacuum system shall be provided inside the debris tank. These weldments shall be removable and require no cutting or welding.

A double acting power up/power down hydraulic scissors lift mechanism will be provided to raise body to a minimum 60 degree angle. The scissors lift mechanism shall be designed to support a minimum of 24 inches of the debris tank width to provide stability and when dumping on uneven ground. The lift capacity of hydraulic scissors lift cylinder is 56,000 lbs.

Dump controls are located on curbside mid-ship of the unit, well forward of the dumping area for operator safety. A manual override system is provided in case of system failure.

The debris body has a five year warranty. A copy of manufacturer's warranty statement shall be enclosed with bid. If pro-rated so state: N/A

An internal polyethylene float device with external indicator is supplied to show when body is loaded to capacity.

AUTOMATIC VACUUM BREAKER

☒ Yes ☐ No

The automatic vacuum breaker assembly is located inside the body.

The automatic vacuum breaker assembly shall be controlled by an electric over hydraulic circuit. The entire

system shall be replaceable via a bolt on assembly. The assembly shall consist of a 12" inlet and two 8" ports that provide air flow to the vacuum system.

A full indication activates an automatic vacuum breaker shut down system that completely shuts down 100 percent of the airflow to the vacuum system to prevent overfilling and wastewater discharge into the atmosphere.

The vacuum breaker system is automatically activated (closed) when the parking brake system is released to eliminate carryover during transit.

The system is controlled/activated, at the front hose reel control station. This enables the operator to pick up large debris with boom and place debris on the road surface. This system can be used for safety in the event suction must be shut off in case of an emergency.

POSITIVE DISPLACEMENT BLOWER

☒ Yes ☐ No

A lobe type positive displacement blower shall be provided capable of 6000 CFM's and 18" of Hg. with cyclone separator. Control of the blower regarding start, stop and the rate of vacuum suction is performed from the front of the truck. A vacuum suction breaker disconnect switch is provided to enable operator to pick up large debris with boom and place debris on road surface. The vacuum system shall operate independent of the high-pressure water system.

something else

The blower is protected by (2) two 3" diameter vacuum relief valves. The system incorporates an air/water separator and a sound silencer to separate material before it enters blower and to ensure quiet operation.

A means of starting, stopping and varying the vacuum suction from operator station at the front of the machine is provided.

The blower is mounted on a frame independent of the water tank.

Unit must be capable of vacuuming under water without air induction. A manometer/vacuum test may be required to demonstrate the system performance.

The positive displacement blower have a 12-month non-prorated warranty.

VACUUM PICK UP HOSE

☒ Yes ☐ No

Shall be front loading, attached at the front of the machine in order to provide ease of positioning the machine over the manhole, as well as afford maximum safety for the operator.

The 8" will be mounted on a boom that will provide a minimum of 18' vertical lift utilizing dual hydraulic cylinder and 230 degree of boom rotation powered hydraulically for non-interrupted smooth movement. Boom to have a lift capacity of 500 lbs. at the front bumper.

The boom will be powered by an electric over hydraulic system: up/down by dual lift cylinders. The right/left movements shall be hydraulic via worm gear rotation.

The boom shall hydraulically telescope a minimum of 10 ft. forward from the operators station. The height of the boom shall not change while the boom is being telescoped. A manual override system shall be provided for right/left, and up/down functions in case of system failure.

Control of the boom is by means of a joystick control at the operator's station, requiring no cables at operator's feet for boom operation. A wireless remote control will be provided for Boom, Vacuum Breaker, Chassis Throttle, and Debris Body functions. A manual override system shall be provided for right/left, and up/down functions in case of system failure.

A boom coverage chart shall be provided stating the square feet the boom covers.

8 inch diameter pipe extensions with clamps will be provided and carried on the truck as follows:

- 1 6-1/2' Catch Basin Nozzle
- 3 6' Aluminum Pipe Extension
- 1 5' Aluminum Pipe Extension
- 1 3' Aluminum Pipe Extension
- 2 spare quick clamps

WATER SUPPLY

☒ Yes ☐ No

The water tanks shall have a minimum usable capacity of 1000 U.S. gallons.

The water tanks shall be constructed of non-corrosive, non-metallic, durable, cross-linked polyethylene to eliminate rust, corrosion, and stress cracking.

The water tanks shall be mounted at and below the truck frame level to provide a low center of gravity for truck stability.

A 2-1/2 inch diameter x 25 feet long hydrant hose with hydrant wrench is supplied on the unit.

An anti-siphon fill device is installed on the unit.

Inspection ports shall be provided to fill or to add chemicals to the water system.

A sight gauge to indicate water level is located within sight of the operator station.

The water tanks are protected by a minimum of 11 gauge steel plating mounted below the water tanks for protection against road hazards when unit travels over the road, off the road or to land fills.

The water tanks carry a ten year replacement warranty.

AUXILIARY ENGINE (WATER PUMP DRIVE ENGINE)

☒ Yes ☐ No

John Deere 6-Cylinder 185 HP at 2400 rpm 415 CID Tier 3 Flex

HIGH-PRESSURE WATER PUMP

☒ Yes ☐ No

The high pressure water pump shall be rated to deliver smooth continuous pressure and flow through the entire flow range of the pump. The high pressure shall have smooth continuous flow for both the high pressure system and the hand gun system.

A continuous duty flow of 80 g.p.m. and 3000 p.s.i shall be provided.

High-pressure relief valves are provided for both the high-pressure system and hand gun system.

The water pump operates independently of the vacuum system and is powered by the auxiliary engine via clutchless, direct dual powerband drive system.

The high-pressure water pump drive system carries a five year replacement warranty. Warranty excludes the drive engine, i.e. auxiliary engine.

The water pump is capable of running dry.

Controls for starting and stopping the water pump and to vary the flow and pressure shall be at the front hose reel operator's station.

The high-pressure water pump is equipped with a cold weather drain valve. The valve allows the operator to completely drain the high-pressure pump.

HOSE REEL ASSEMBLY

☒ Yes ☐ No

The hose reel assembly is mounted on the front of the vehicle. The hose reel shall have a minimum of 30" inside diameter with a capacity of 800' x 1" hose. The hose reel is equipped with a cage - Lexan style. The hose reel is hydraulically powered in both directions by means of a double chain and sprocket drive. The controls for operating the motor have a flow control device to regulate the rotational speed of the reel in both directions. All hydraulic hoses are behind a steel housing to protect operator from hydraulic oil if a hose fails. The hydraulic motor, chain, and sprockets have a protective cover or are mounted on the radiator side of the hose reel for operator safety. The hose reel articulates 180 degrees to the drivers side allowing operator to work in any position through this arc. This allows greater flexibility in truck placement for manholes located in tough areas and provides greater safety to the operator. Reel extends beyond the width of unit for greater flexibility for positioning reel over offset manholes, catch basins, etc. A hydraulically controlled outrigger leg is supplied that comes in contact with the ground at any one position. A warning light is located in the cab to warn the operator that the outrigger leg is not in its transported position prior to moving the unit. A manual bypass system for the hose reel assembly is provided to manually pull the reel assembly away from its transported position. This feature allows operator to check fluids without starting engines.

JET HOSE☒ Yes ☐ No

600' x 1" jet rodder hose will be supplied rated for 3000 psi working pressure and 7500 psi burst pressure.

A heavy duty hose guide with 25' of nylon rope will be provided.

Nozzles shall be hardened steel with replaceable ceramic orifices as follows: 1) Chisel head penetrator & 1) standard sanitary.

MANHOLE CLEANING WATER SYSTEM (HAND GUN)☒ Yes ☐ No

The high-pressure pump and independent water tank assembly supplied shall be used for manhole cleaning. A smooth continuous flow of 20 g.p.m. and pressure of 600 p.s.i. shall be provided for ease of operation. A hand gun pressure relief valve set at 600 p.s.i. shall be provided. One full functioning hand gun with on/off hand control, replaceable nozzle tip, 12 inch extension, adjustable spray and 50' x 1/2" hose with retractable reel will be provided.

The hand gun will attach to the system via a quick couple connection at the curbside of the unit. To avoid being coiled at the operator's station a hand gun holder will be provided at the front bumper.

HYDRAULIC SYSTEM AND LUBRICATION☒ Yes ☐ No

The hydraulic system has a 55-gallon capacity.

The hydraulic system shall incorporate a main shut off valve in case of hydraulic failure.

The hydraulic system shall incorporate hydraulic pressure relief valves and pressure gauges for ease of trouble shooting and maintenance.

The unit is equipped on the passenger side, mid-section of the module, a permanent weatherproof white vinyl lubrication chart that points out lubrication points on the module and specifies what type of lubrication and hydraulic fluids are required. The chart also specifies the frequency of each lubrication point.

Remote plumbed grease fittings are provided for the vacuum compressor, boom rotation, and water pump drive areas.

ACCESSORIES☒ Yes ☐ No

A minimum twelve (12) month manufacturer's guarantee on the unit will be provided.

2) 35" x 14" x 24" side mounted tool boxes will be provided.

1 Debris body power flush out system

1 Rear mounted hydraulic pump off system, 400 gpm w/20' lay flat hose

Gravity drain system consisting of plumbing to the mid-passenger side of the unit. Includes a 3" knife valve

1 with cam-lock connection, 30' of layflat hose with storage rack allowing return of liquids to the manhole without having to reposition vehicle.

1 Front Gate Valve for use with Gravity Drain Option

1 Wear plate, swing style

1 Air purge system

1 1/4 turn ball valve water drain

1 Variable flow valve

1 Vertical style, deck mounted pipe rack, holds 3 pipe

1 Folding pipe rack holds 3 pieces of pipe, tank mounted, curbside

1 Storage box behind cab, 16" x 42" x 96"

1 Storage box shall be provided with two roll out shelves

1 Back up alarm

Hydroexcavation package: 50' retractable handgun hose reel with 50' of 1/2" of high pressure hose, HP/Quick

1 disconnect, heavy duty HP unloader valve, main control ball valve, 72" x 1/2" Sch. 80 Lance w/Quick Dcn., Sngl. Fwd. Spray Nozzle, Horiz. Hand.

- 1 Hose footage counter, curb side
- 1 Rear mounted tow hooks
- 1 Auxiliary engine remote oil drain
- 1 Remote boom grease zerk assembly, (accessible from ground level)
- 1 Remote debris tank grease zerk assembly (accessible from ground level)
- 1 Aluminum Dual Roller Level Wind Guide ilo standard
- 1 Nozzle rack
- 1 10' leader hose
- 1 Water pump remote oil drain
- 1 Built in Body Prop - Rear Boom Support Mounted
- 1 John Deere 6-Cylinder 185 HP at 2400 rpm 415 CID
- 1 12VDC auxiliary hydraulic pump
- 1 Traffic Camera with Color Monitor (Camera placement must be picked)
- 1 Rear traffic camera
- 1 Front hose reel camera - to view front of hose reel area
- 1 Long handle storage/ (2) PVC
- 1 Long handle storage placement - rear of mainframe
- 1 Cone storage rack
- 1 Cone storage rack

LIGHTING

☒ Yes ☐ No

The entire module electrical system is vapor sealed to eliminate moisture damage.

All wiring is color-coded, labeled and run in sealed terminal enclosures.

All module circuits are protected by circuit breakers.

Clearance lights and reflectors are furnished in accordance with D.O.T. requirements.

- 1 4 LED strobes - (2) front bumper, (2) rear bumper - Whelen 50A03ZCR - Amber
- 1 LED arrow board, rear debris tank door mounted - Whelen TA1251NF1 Traffic Arrow
- 1 LED Arrow stick - Whelen TAM85 Traffic Advisor
- 2 Limb guards for flood lights
- 1 LED Boom Mounted Flood Light - Whelen NP6BB Worklight
- 1 LED Rear Mounted Flood Lights - Whelen NP6BB Worklight

PAINT

☒ Yes ☐ No

Unit paint surface is shot blasted, primed and sanded prior to paint. Unit to be painted.

with DuPont Imron 5000 polyurethane paint.

Unit shall have reflective green side and boom stripes and rear door chevrons.

Chassis shall be painted manufacturers standard white.

TRAINING AND MANUALS

☒ Yes ☐ No

Operator training will be conducted by a factory-trained representative for a minimum of one day at the time of delivery. 3 copy(ies) of the operating and maintenance manual for the sewer cleaner module shall be provided upon unit delivery. An operational video will be provided with the unit.

MOUNTING AND DELIVERY

☒ Yes ☐ No

The unit described will be mounted on a truck chassis acceptable to the body manufacturer at the factory of the body manufacturer.

EXCEPTIONS AND DEVIATIONS:

Bidder shall fully explain every variance, exception, and or deviation to the bid specifications. Additional sheets/lines may be added if required.

We take NO exceptions.

Vehicle Summary

		Unit	Chassis
Model:		T400 Series	Fr Axle Load (lbs): 20000
Type: Conventional or equal.		FULL TRUCK	Rr Axle Load (lbs) 23000
Description:		T470 20K/23K	G.C.W. (lbs): 43000
Application			Road Conditions:
SEWER COMBINATION UNIT			Class A (Highway) 90
			Class B (Hwy/Mtn) 10
			Class C (Off-Hwy) 00
			Class D (Off-Road) 00
Body			Maximum Grade: 6
Type:		Vacuum tank	Wheelbase (in): 243
Length (ft):		16.0	Overhang (in): 60
Height (ft):		13.5	Fr Axle to BOC (in): 73
Max Laden Weight (lbs):		4000	Cab to Axle (in): 170
			Cab to EOF (in): 230

Description		COMPLY YES / NO
T400 Series Conventional Extended Cab Or Equal		
T470 4x2 Medium Duty		
Chassis operation will include stationary application used in lower 48 states [US only]. Stationary operation is defined as running the engine under load while stationary at a substantial fraction of engine gross horsepower (60% or greater) for an extended period of time (longer than 5 - 10 minutes).		
Dealer/Customer declines engine w/CARB Idle Emissions Reduction Feature.		
T470 4x2 Medium Duty		
Other bulk goods		
Local pickup & delivery. Vehicles which haul freight, typically operating within a 100-mile radius, on public streets & highways, & other paved surfaces, including limited Class C roads. Includes package & freight delivery, as well as fuel oil or petroleum distribution, etc. Road usage: minimum 3% Class B, do not code for Class D.		
Vacuum tank		
U.S. Domestic Registry, 50-State		
Engine & Equipment	PX-9 370 2013 370@2000 365@2100 1250@1400	
	Includes turbo exhaust brake, no code is used. Diagnostic Plug for data link, Oil Cooler, Aluminum Flywheel Housing. N09200 N205 120..Standard Maximum Speed Limit [LSL] N09220 N207 0....Expiration Distance N09240 P09 120...Hard Maximum Speed Limit N09260 P14 64...Maximum Accelerator Pedal Vehicle Speed N09280 P16 0....Accelerator Lower Droop N09300 P19 64...Maximum Cruise Speed N09320 C143 0....Cruise Control Lower Droop N09360 N203 252..Reserve Speed Function Reset Distance N09380 N202 0....Maximum Cycle Distance N09400 N206 10...Maximum Active Distance N09420 N201 0....Reserve Speed Limit Offset N09440 P11 No...Engine Protection Shutdown N09460 P06 No...Gear Down Protection N09480 P26 1400.Max PTO Speed	

Description

N09500 P02 No...Cruise Control Auto Resume
N09520 P04 No...Auto Engine Brake in Cruise
N09540 N209 0....Expiration Distance
N09560 P520 Yes..Enable Idle Shutdown Park Brake Set
N09580 P32 5....Timer Setting
N09600 P233 Yes..Enable Impending Shutdown Warning
N09620 P234 60...Timer For Impending Shutdown Warning
N09640 P516 35...Engine Load Threshold
N09680 P33 No...Idle Shutdown Manual Override
N09720 P230 Yes..Enable Hot Ambient Automatic Override
N09740 P46 40...Low Ambient Temperature Threshold
N09760 P56 60...Intermediate Ambient Temperature Threshold
N09780 P47 80...High Ambient Temperature Threshold

Prospector Version 37.2

Replaces 37.1

Effective VSL Setting NA

Engine Idle Shutdown Timer Disabled

Enable EIST Ambient Temp Override

Enable EIST in PTO Mode

Use only with MX and Cummins engines

Eff EIST NA Expiration Miles

Use only with MX and Cummins engines

Air compressor: Cummins 18.7 CFM, Cummins, PACCAR

PX engines.

Engine mount Powercore air cleaner.

w/constant torque SS clamps, pop-up air restriction indicator. Pop-up indicator is standard.

Fan Hub: Horton 2-Speed for ISL9, ISL-G,

PX-8 or PX-9

Cooling module: 1000 square inches

T170/T270/T370/T470. Includes metal surge tank on T170/T270/T370.

RH under cab DPF/SCR w/ RH SOC vertical tailpipe.

For use w/ daycabs, extended daycabs, or modular sleepers. T660 requires split fender hood

Tailpipe: 5 in. single 24 in. 45 degree curved.

Fleetguard filter/Water separator FS1003 w/WIF

(water in fuel) sensor. For PACCAR PX-8/PX-9 or Cummins ISL engines.

Kenworth Fuel Cooler

Required for Cummins engines with a single fuel tank. Required for PACCAR MX-13 engine with a single fuel tank and stationary use: High RPM, low vehicle speed, sustained for longer than 1 hour. Optional for all other applications.

Alternator: PACCAR 160 amp, brush type

Batteries: 2 PACCAR GP31 threaded post (700) 1400

CCA dual purpose.

Description

Starter: PACCAR 12 volt electrical system. W/
centralized power distribution incorporating plug-in style relays. Circuit protection for serviceability, 12-volt light system w/circuit protection circuits number & color coded.

Battery disconnect switches 2, mounted on
battery box.

Multi-function engine connector for body builder
interface for Cummins.

Body Builder Control Harness coiled EOF for
customer installed remote throttle and remote PTO controls. Harness includes Remote PTO control and Remote Throttle controls. T680/T880 models do not require 12-way engine connector sales codes. All other models require (1900082 or 1900084).

Transmission & Clutch

Transmission: Allison 3000RDS 6-speed
w/PTO drive gear. 5th Gen controls. Includes heat exchanger & oil level sensor. Rugged Duty Series for vocational applications. Transynd transmission fluid is standard on all Allison 1000, 2000, 3000 & 4000 series transmissions. Requires a push button shift control code. Oil temperature gauge is standard on class 8 models.

Driveline: 3 medium-duty 2 centerbearing.
*Med duty is 1760 series.

Torque converter included w/Allison
Transmission.

Pushbutton control center console mounted.
Class 8 with Allison Transmission.

Delete Allison FuelSense

J1939 Park Brake Auto Neutral

PTO adapter for front engine PTO.

Chassis will be fitted w/LH transmission PTO.
(PREVENTS ECU F/INTERFERING W/PTO ONLY)

Chassis will be fitted w/RH transmission PTO.
(PREVENTS ECU F/INTERFERING W/PTO ONLY)

Front Axle & Equipment

Dana Spicer D2000 Front Axle rated 20K
standard track.

Front Brakes: 22K Bendix ES S-cam 16.5x6 in.

Front dustshield: for drum brakes:
all front axles.

Front Brake Drum: 22,000 lbs. 16-1/2x6 in. Cast.

Front Hubs Iron hub pilot 22,000 lbs. 10 Bolt
16.5x6in. or 7in. or air disc brakes. 10 Bolt, 11-1/4 in. bolt circle. Consider Wheelguards (5850002) with aluminum wheels.

Description

ConMet PreSet Plus Hub package; front axle.

Hubcap: front vented.

Front Auto Slack Adjuster.

Front Springs: Taperleaf 22K w/shock absorbers.

C500 standard with a single stage spring and threaded pins.
T800/T880/T440/T470/W900B standard with a multi-stage spring and rubber pins. For T800/T880/T440/T470/W9B, this is a three stage spring. The spring rate increases when loaded closer to the full capacity of the spring. Not available on W900L or W900S.

Dual power steering gears: 20K TRW TAS65.

Power Steering Cooler: Radiator mounted air to
oil 2007+ engines only. 2899362 is optional w/ 2006 or 2007 engines.

Rear Axle & Equipment

Single Dana Spicer S23-170 single reduction axle,
single rear axle rated at 23K.

Rear Axle Ratio - 5.57.

Single Rear Brakes 16-1/2x7 in. Bendix ES-
extended service S-cam.

Single Rear Brake Drums: cast.

Single Rear Hubs: Aluminum hub pilot 23K;
11-1/4 in. bolt circle.

ConMet PreSet Plus Hub package; single rear axle.

Single Rear axle automatic slack adjusters.

Spring Brake: 3030 high output single.

Dustshields for drum brakes: all rear axles.

Bendix 4S/4M anti-lock brake system.

Rear suspension: single Reyco 79KB taperleaf 23K.

Steel crossmembers & gussets, Kenworth longlife spring w/helper.
Unladen Height: 11.0 in. Laden Height: 9.3 in. Not available with shocks or swaybars.

Tires & Wheels

Front tires: Bridgestone M854 425/65R22.5 20PR.

44.8 in. diameter, all position. On/Off highway. Wide-base tire. Curb protector bar 20.7 in. SLR.

Rear tires: Bridgestone M799 11R22.5 16PR.

42 in. diameter, drive. 19.5 in. SLR. Code is priced per pair of tires.

Rear Tire Quantity: 4

Front wheel: Alcoa 82362 22.5x12.25 aluminum,

with Lvl One [TM] finish, hub pilot mount. 11400lb. maximum rating. Super single. Standard track axles may be over 102 in. w/425 tires. Air disc brake compatible.

Description

Rear wheel: Accuride 50487 22.5x8.25 steel

Steel ArmorTM powder coat, hub pilot mount. 7400lb. maximum rating. 5-hand hole. Air disc brake compatible. Code is priced per pair of wheels.

Powder coat white steel wheel. Use in conjunction

with front, dual front, rear, spare or lift axle wheel code(s). All wheels on chassis must have same finish color.

Rear Wheel/Rim Quantity: 4

Frame & Equipment

Frame Rails: 10-3/4 x 3-1/2 x 3/8in. Steel 337in.

to 416 in. Truck frame weight is 3.48 lb.-in. per pair of rails. Section modulus is 17.80, RBM is 2,132,000 in.-lbs per rail. Frame rail availability may be restricted based upon application, axle/suspension capacity, fifth wheel setting, or component/dimensional specifications. The results of the engineering review may result in a change to the requested frame rail. If a change is required Kenworth Application Engineering will advise the dealer of the appropriate material specification for a substitute rail.

Full Steel Insert: for 10-5/8 in. or 10-3/4 in.

Steel 337 in. to 416 in. or 2nd insert for 11-5/8 in. steel frame. Adds 1,149,000 in.-lb to main rail RBM. Truck insert weight is 2.05 lb.-in. per pair of rails. Full frame insert length is equal to wheelbase plus rear frame cutoff plus dimension forward of front axle by model: T660 and T800 = 21.26 in., C500B = bumper setting minus 0.79 in., W900B = 5.27 in., W900L = 1.50 in., W900S = 3.27 in., T440/T470 50 in. bumper setting = 21.26 in., T470 73 in. bumper setting = 72.3 in.

Delete bumper: Requires a bumper setting code.

73 in. Bumper setting. Requires a bumper code.

T470 W/ extended front frame rail. Must code
for rail separately.

Mudflaps, Front: Extra wide for use w/ tires that
are wide base singles.

Battery box cantilever aluminum BOC w/
fiberglass cover.

Battery box location: LH Side.

T470, C5, T6, T8 non-polished DPF/SCR or CNG cover

diamond plate w/ step. For use w/ 2010 or later exhaust systems. For T8, use extended length non-polished battery box on opposite rail to match the length of under cab components.

Rear mudflap arms: Betts B-25 standard-duty,
straight. Includes B1732 mounting brackets as standard.

Rear mudflap shields: White plastic antisail w/
Kenworth logo.

Square end-of-frame w/ crossmember; non-towing.

Description

Fuel Tanks & Equip

Fuel Tank: 75 US gallon 24.5in. aluminum under
replace. Class 8 fuel tanks w/ o locking caps include an anti-siphon device on the filler neck.

DEF tank 6.9 clear BOC [CBOC], requires LH under
cab fuel tank. This tank has 6.9 gallons of useable volume. The tank will be located inboard of the LH under cab fuel tank. There is no frame space required to locate this tank. Not for use on sleeper chassis. Standard capacity is calculated by fuel capacity of the vehicle and will accommodate two diesel fill-ups for every DEF fill-up. For 1:1 DEF fuel fill ratio, add 7889204.

Standard DEF to fuel fill ratio: 2:1 or greater.

Anti-siphon device swaged in place.
For any number of fuel tanks.

DEF tank location is on the LH.

Location: 75 gal fuel tank LH under cab

Cab: Extended Day Cab w/ Curved Glass. Includes

Cab & Equipment

aluminum & fiberglass fully hucked cab w/ all aluminum bulkhead doors & continuous stainless steel piano-style door hinge & pins. C500B: 129 in. BBC. 80 in. FA to BOC. T660B: 128 in. BBC. 80 in. FA to BOC. T800B: 127 in. BBC. 80 in. FA to BOC. W900B: 126 in. BBC. 96 in. FA to BOC. W900L: 136 in. BBC. 106 in. FA to BOC. Incandescent exterior lights include diagnosable bulb detection and warning. Trailer cable on tractors includes integrity detection. Standard features include multiplex wiring for interior lights, automated pre-trip inspection, short and open check diagnostics, and programmable daytime running lights. Warning alarm will sound when lights are left on.

Cab door bearing blocks, top & bottom.

Hood: T470 Sloped Hood for straight rail.

Includes radiator mounted grille, split fenders, mudflaps, & separate bumper.

Cab heater: W/integral defrosters & A/C 45,000

btu cab heater. No sleeper heater/AC. Includes 5 mode rotary control. T660 include filter media.

Steering wheel: 18 in. 4-spoke.

Adjustable telescoping tilt steering column.

PTO air control: On dash w/indicator light.

Information for customer-installed PTO Chaisea

277. 10-bolt. Available only with Allison 3000/4000 series transmissions.

Switch & Wiring for Customer-Installed PTO.

Electric over hydraulic PTO. Includes switch guard. Wiring is routed to LH frame for connection to the customer installed PTO. No air controls are provided with this code.

Two spare switches: Wired to power.

Description

KW Driver Information Center: Includes fuel

economy, RPM display, trip information, truck information, diagnostics, gear display, alarm clock.

Instrument package: Includes speedometer,

tachometer, fuel gauge, engine coolant temperature gauge, engine oil pressure, voltmeter. Class 8 also includes primary & secondary air reservoir gauges & an air application gauge. DEF level gauge and warning lamp are included with 2010+ engines. Engine hour meter and outside air temperature readouts are standard. Primary read out will be MPH. Add 8240620 to switch primary scale to KPH in Canada.

Large flat panel on dash For customer-installed

controls. Reduces gauge count by 6.

Cab Interior: Summit. T440/T470 Only. Includes

smooth upholstered side & back panels w/stitched accent lines, upholstered door pads, full vinyl headliner, black dash panels & black rubber floor mats.

Interior color: Slate Gray w/trim Dark Slate Gray**Driver seat: Kenworth Air cushion Plus HB vinyl.**

Standard features includes 7 in. fore and aft slide adjustment w/isolator, 6-23 degree recline, air suspension with cover, dual armrests, and single chamber air lumbar support. Seat cushion is 20 inches wide w/ 2-position tilt and 2-position front cushion extension. Seat material has a horizontal stitch pattern and is 2-tone in color. Seat back is carpeted and includes a map pocket. Seat is manufactured by National. Includes inside visor and retractable 3-point matching seat belts. Grey seat belts.

Rider seat: Kenworth Toolbox Plus HB vinyl.

Standard features include fixed base and backrest, tool box seat base w/ door, and dual armrests. Seat cushion is 19.5 inches. Seat material has a horizontal stitch pattern and is 2-tone in color. Seat back is carpeted with a map pocket. Seat is manufactured by National. Includes inside visor and retractable 3-point matching seat belts. Grey seat belts.

Seat color: Dark Slate Gray.**Kenworth Radio with AM/FM/WB****Under dash center console: Includes one cupholder**

& two 12V outlets. For use w/Autoshift, Ultrashift, & Allison Gen IV only.

Non-self cancelling turn signal: W/column-mounted

headlight dimmer switch & intermittent wiper control.

Electric LH & RH door locks.**Cab access contoured grabhandles, LH/RH.****Grabhandle LH inside door frame above dash.****Grabhandle RH inside door frame above dash.****DAYLITE DOOR: LH/RH INCL RH PEEPER WINDOW****Single air horn under cab.****Look-Down, Pass. Door, Stainless 8.5x4.4**

Description

Mirror: Dual Prutsmann mirror 7 in. x 16 in.
polished stainless steel, and non-heated.

Mirror brackets 8-1/2 ft load width.

Rear Cab Stationary Window 17 in. x 36 in.

Manual LH & electric-powered RH door window.
Switch located on door.

One-piece windshield, w/ curved glass.

2 in. rubber wheelwell fender extension.

Link Cabmate suspension.

Lights & Instruments

Headlamps: Halogen Projector Low Beam, Halogen
Complex Reflector High Beam

Marker Lights: with small round base,
Five cab roof mounted.

Turn Signal Lights: Mounted on fender

Combination Stop, Tail, Turn & Backup Lights RH
& LH.

Daytime Running Lamps.

Marker Lights: Interrupter Switch.
Included in Turn Signal For All Models Except T3. The T3 Switch Is In The Dash.

Wiring Only: For customer-installed backup
alarm.

Circuit Breakers: Replacing fuses. Does not
apply to any 5-amp fuse box position. Breakers include stop/brake/turn, tail lamp, high & low beams, marker/clearance lamps, horn, fuel heat, gauges, air dryer, HVAC controls, panel lamps. Some circuits will remain fuses.

Air Equipment

Air Dryer: Bendix AD-IS heated.

Moisture ejection valve w/ pull cable drain.

Nylon air tubing in frame & cab, excluding hoses
subject to excessive heat or flexing.

Air tanks: clear of transmission area
Clear area - forward of transmission yoke C/L

Extended Warranty

Description

Standard Warranty.

Description

GHG Secondary Manufacturer: Does Not Apply

Paint**Paint color number.**

N97020 A - L0006 WHITE
N97200 FRAME N0001 BLACK

Day Cab Standard Paint

1 - Color Paint - Day Cab

Color will be White if no other color is specified.

Base coat/clear coat. ELITE WHITE



T440/T470



KENWORTH.
The World's Best.

T440 Extended Day Cab





KENWORTH
THE WORLD'S BEST.

T440/T470



VERSATILE

PRODUCTIVE

EFFICIENT

RELIABLE

MANEUVERABLE

MAKING DELIVERIES OR WORKING CONSTRUCTION, GET HEAVY-DUTY PERFORMANCE FOR MEDIUM-DUTY APPLICATIONS

When "medium duty" just doesn't seem heavy duty enough for the job you have in mind, turn to a Kenworth T440 or T470. Serious workhorse solutions for more demanding regional haul, pickup and delivery, municipal and vocational applications, these vehicles far outpace other trucks in this category. Each is available in a straight truck or tractor in GVW ratings from 33,000 lbs to 68,000 lbs.

The T440 features modern aerodynamic styling, excellent visibility and maneuverability, superior ergonomics, and a fuel efficient powertrain – all, in a robust chassis design meant to deliver a lot more value over the long haul.

The versatile new Kenworth T470 merges just the right mix of brain and brawn to forge a whole new class at the heavy end of what is usually termed "medium duty." With full parent rail extensions providing maximum resistance to bending moment (RBM) from one end of the rail to the other, the T470 supplies a solid and durable mounting platform for hydraulic pumps, winches, front stabilizers and snow plows.



1470 Extended Day Cab

TOUGH ON THE JOB, EASY ON THE DRIVER

Kenworth's legendary conventional cab – a strong and quiet environment unmatched in the industry for its craftsmanship, longevity and comfort – is part of the package. A low step-in height, fully-trimmed -- doghouse-free -- interior, advanced heating and cooling system and state-of-the-art control all combine to enhance productivity and reduce fatigue. No matter how many trucks you own, here is the reason your drivers will line up for the keys to the Kenworth.

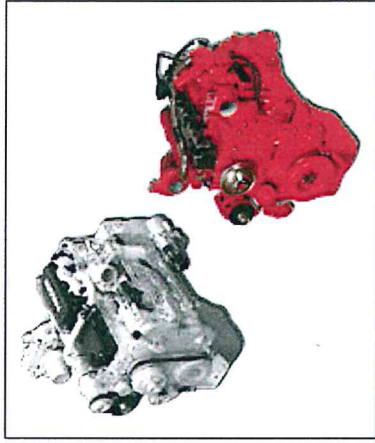


The easy-to-clean, durable and spacious interior features wide-open visibility, first-class seating in configurations to match your requirements and plenty of storage. It incorporates the same highly reliable and ergonomic multiplexed dash available in Kenworth's Class 8 product line. The popular Driver Information Center, standard on the T440 and T470, enables your operator to optimize vehicle performance like never before. Shown here with Kenworth's optional Nav+ HD business tool incorporating truck route navigation, vehicle monitoring, Bluetooth, diagnostics, SiriusXM Satellite Radio®, MP3 player, camera with multiple input options, virtual gauges and much more.



OF COURSE YOU HAVE CHOICES. THIS IS YOUR KENWORTH.

As a custom truck builder, Kenworth offers more job-specific and factory-installed options than any other manufacturer of heavy and medium-duty vehicles. The result is an integrated, fully-engineered, job-ready solution you can depend on --- right from the start. Here are just a few of the choices you might consider when you order yours --- including some exclusive items you simply can't get anywhere else.



To meet your specific job requirement, you have the rugged PACCAR PX-9 engine rated up to 380 HP and 1,250 lb-ft of torque or the Cummins ISL-G at 320 HP and 1,000 lb-ft of torque.



Kenworth's T470 grille is made of stamped stainless steel --- not plastic or pot metal. It's mounted to the radiator allowing the hood to swing clear of front mounted equipment. The bumper is constructed of three pieces for fast, economical installation of winches, PTOs and other front-end equipment.



When the schedule requires a layover, Kenworth's 38-inch AeroCab® sleeper provides a welcome sanctuary and the kind of versatility that keeps your operation on the move.



DEF tanks in three sizes complement your choice of fuel tank size and provide fill interval options appropriate for your application. Fuel tanks in 22" and 24.5" range in size from 56 to 150 gallons. Polished aluminum fuel tanks and polished stainless steel DEF tank covers are also available.



Cab corner and back windows greatly enhance visibility in tight places.



Heavy-duty crossmembers and 3-hole gussets strengthen the backbone of the T440 and T470, preparing it for the pounding your job dishes out. They can be replaced in less than 10 minutes with no special tools.



An advanced forward lighting system provides up to 30% more down-road coverage than conventional sealed beam designs. Choose the standard halogen or optional HID Xenon lamps.



For those applications where frame space is at a premium and body installation requires a clear back of cab, the optional 6.9 gallon DEF tank is conveniently located under the rear corner of the cab.

T440 AND T470 COMMON SPECIFICATIONS - GVW 33,000 TO 68,000 LBS.

Engine

- PACCAR PX-9 Engine, 260 HP, 720 lb.-ft of Torque
- PACCAR PX-9 Engines up to 380 HP
- Cummins ISL-G Natural Gas Powered Engines up to 300 HP
- Fire Truck Ratings Available up to 400 HP
- CARB Emission Reduction Feature Available

Starting & Charging

- Electrical System with Centralized Power Distribution Incorporating Plug-In Style Relays & Circuit Protection for Serviceability
- 160 Amp Bosch Alternator
- 130 and 320 Amp Alternator Options
- PACCAR 12 Volt Starter
- Two PACCAR Dual Purpose Batteries
- 3 Dual purpose, 2 Starting and 2 or 3 Deep Cycle Optima Batteries

Exhaust Options

- DPF & SCR RH Under with Vertical Tailpipe RH Side of Cab
- DPF & SCR RH Under with Vertical Tailpipe RH Back of Cab
- Vertical Independent SCR/DPF RH/LH Back of Cab
- Vertical Independent Muffler RH Back of Cab (ISL-G Only)
- Horizontal Catalyst/Horizontal Tailpipe (ISL-G Only)

Transmission

- Eaton Fuller FSG406A 6-Speed
- Clutch - Eaton Fuller
- 6, 9, 10, 11 and 13 Speed Eaton Fuller Transmissions
- Eaton Ultra Shift Plus Transmissions
- Allison Automatic 5 and 6 Speed HS, RDS and EVS

Frame / Axle / Suspension / Brakes

- Frame - 10 5/8" x 3 1/2" x 5/16" Steel - 120,000 psi - Heat Treated
- Frame - 10 3/4" x 3 1/2" x 3/8", 10 11/16" x 3 1/2" x 1/2", 11 5/8" x 3 1/2" x 3/8"
- Full Frame Insert for 10 5/8", 10 3/4" and 11 5/8"
- Partial Inserts for 10 5/8", 10 3/4" and 11 5/8"
- Front Axles - Meritor, 12,500 lb.
- Front Axles - Dana Spicer, 12,000 to 22,000 lb.
- Front Axles - Meritor, 12,500 to 20,000 lb.
- Front Springs - Taperleaf w/Shocks, 12,000 lb.
- Front Springs - Taperleaf w/Shocks, 13,200 to 22,000 lb.
- Single Rear Axle - Dana Spicer, 21,000 lb.
- Single Rear Axles - Dana Spicer, 22,000 to 30,000 lb.
- Dual Rear Axles - Dana and Meritor from 40,000 to 46,000 lb.
- Rear Suspension - Reyco 21,000 lb.
- Rear Suspension - 23,000 to 46,000 lb. - Kenworth, Reyco, Hendrickson, Neway & Chalmers
- Single Pusher Axle
- Single Tag Axle
- ABS System - Bendix

Wheels / Tires

- Wheels - Steel 22.5"
- Aluminum 22.5" & 24.5"
- Alcoa Dura-Bright, Lvl One and Ultra One Aluminum Wheels**
- Tires - Bridgestone
- Up to 425 Series

Fuel / DEF Tanks

- Aluminum - 56 Gallon, 22" Round Aluminum
- Round Aluminum 22" and 24.5" from 75 to 150 gallons
- DEF Tanks - Small, Medium, Large and Clear BOC

Battery Boxes / Bumpers

- Aluminum & Steel Battery Box with Aluminum Diamond Plate Cover
- In Cab Battery Box Under Passenger Seat

Cab / Hood / Interior

- Cab - Aluminum and Composite
- Extended Day Cab
- 38" AeroCab FlatTop Sleeper
- Cab Air Suspension
- Interior - Smooth Gray Vinyl with Black Dash Trim
- Power Door Locks
- Passenger-side Electric Window
- Kenworth Air Cushion High Back Driver Seat
- Kenworth Intermediate and High Back, Air and Toolbox Rider Seats
- 2-Person Bench Seat
- Sears Driver and Rider Seats
- Rear Cab Corner Windows
- Kenworth Multifunction Driver Information Center
- 9 Gauge Instrumentation
- 7.5" x 5" Body Builder Instrument Panel
- 4 Additional Gauge Locations
- Workstation Between Seats
- Halogen Projector Headlamps
- Xenon Headlamps
- Kenworth Nav+ HD

Special Equipment & Options

- Aerodynamic Heated Mirrors
- Heavy Duty Crossmembers
- Factory Installed PTO's
- Quiet Cab® Package
- Switch & Wiring for Customer Installed Fog Lights & Floodlights
- Left & Right Cab Mounted Halogen Spotlights
- Single and Dual Beacon Lights
- Factory Installed BOC Floodlights
- Daytime Running Lights
- Multi-function Engine Connector for Body Builder Interface
- Bodybuilder Harness

- Adjustable Telescoping Tilt Steering Column
- Remote Keyless Entry
- Bumper Delete
- NFPA Compliance Options

T440 SPECIFIC OPTIONS

Frame / Axle / Suspension / Brakes

- 49.4" Bumper Setting

Bumpers

- Bumper - Steel Channel - Chrome
- Bumper - 3-Piece Aerodynamic
- Bumper - Tapered Steel Channel - Painted

Cab / Hood / Interior

- Hood - Sloped Aerodynamic

T470 SPECIFIC OPTIONS

Engine Equipment

- Front Engine PTO Adaptor

Frame / Axle / Suspension / Brakes

- 50.5" Bumper Setting
- 73" Extended Bumper Setting

Bumpers

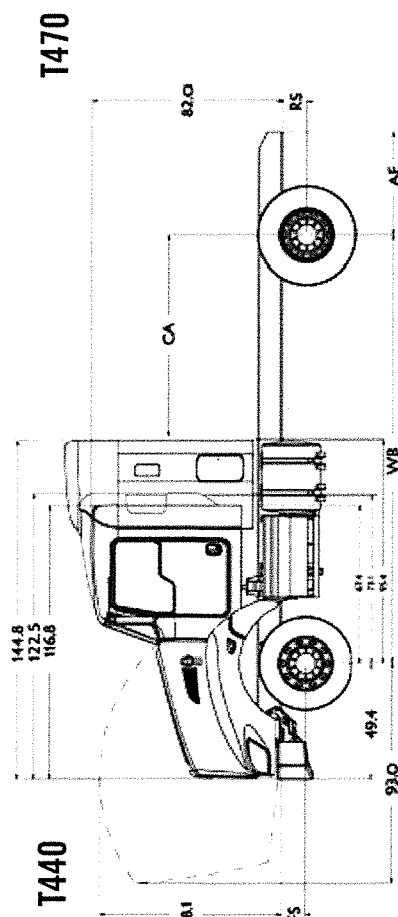
- Bumper - Tapered Aluminum Channel - Natural Finish
- Bumper - 3-Piece Offset Aluminum or Steel
- Bumper - Tapered Chrome Steel Channel

Cab / Hood / Interior

- Hood - Sloped with Fixed Grille

Special Equipment & Options

- Rear Engine Power Take Off (REPTO)
- Front Engine Power Take Off (FEPTO)



HEAVY-DUTY SUPPORT WHENEVER - AND WHEREVER - YOU NEED IT

The reliability and moneymaking potential of your business relies on the dependability of your support system
 – another great reason to invest in a Kenworth.



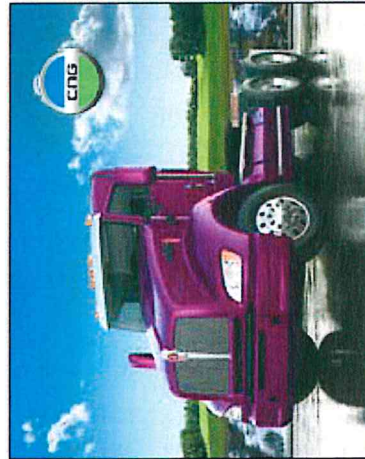
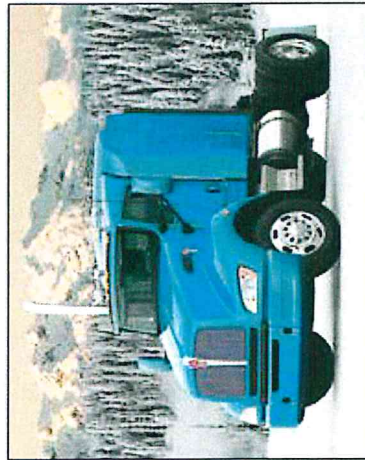
The minute you take delivery of your Kenworth, you gain 24/7 access to one of the most extensive and reliable parts and service organizations in the trucking industry. People dedicated to helping you maximize uptime, optimize truck performance and profit from your investment. When your truck needs attention – no matter the make or model – PremierCare ExpressLane guarantees a professional service assessment and an estimate of the time and cost of repair within two hours. When you want to know your options. Now.



Perhaps you'd prefer to focus your attention and resources on your core business, save interest expense and improve cash flow. PacLease offers a number of truck rental and leasing programs that can be tailored to fit your operating requirements precisely.
www.paclease.com



Start with a lender who understands your business. PACCAR Financial has served owner-operators and fleets for nearly 50 years, matching individual requirements with customized financing packages at attractive and competitive rates. Financing has never been this easy. www.paccarfinancial.com



A **PACCAR** COMPANY

KENWORTH TRUCK COMPANY
 P.O. Box 1000
 Kirkland, Washington 98083-1000
 (425) 828-5000

CANADIAN KENWORTH COMPANY
 6711 Mississauga Road N.
 Mississauga, Ontario L5N 4J8
 (905) 858-7000



Note: Equipment and specifications shown in this brochure are subject to change without notice. Consult with your Kenworth dealer at time of ordering for standard and optional equipment.

* SiriusXM is a registered trademark of Sirius XM Holdings Inc.

** Dura-Bright, LVL One and Ultra One are registered trademarks of Alcoa Inc.

14401470/15 © 2015 Kenworth Truck Co.

KENWORTH TRUCK COMPANY LIMITED WARRANTY AGREEMENT

Medium Duty Warranty UNITED STATES

THIS LIMITED WARRANTY AGREEMENT ("AGREEMENT") LISTS THE RESPECTIVE RIGHTS AND RESPONSIBILITIES OF YOU, KENWORTH TRUCK COMPANY ("KENWORTH"), AND THE SELLING KENWORTH DEALER ("SELLING DEALER"). PLEASE READ THIS LIMITED WARRANTY CAREFULLY.

Kenworth warrants directly to you that the Kenworth vehicle ("Vehicle") identified below will be free from defects in materials and factory workmanship ("Warrantable Failures") appearing under normal commercial use and service during the time or mileage limitations set forth in the attached Warranty Schedule (dated 11/09). **The Vehicle warranty extends only to you, the First Purchaser.**

YOUR SOLE AND EXCLUSIVE REMEDY AGAINST KENWORTH AND THE SELLING DEALER ARISING FROM YOUR PURCHASE AND USE OF THIS VEHICLE IS LIMITED TO THE REPAIR OR REPLACEMENT OF "WARRANTABLE FAILURES" AT AUTHORIZED UNITED STATES AND CANADIAN KENWORTH DEALERS, SUBJECT TO KENWORTH'S TIME AND MILEAGE LIMITATIONS LISTED IN THE ATTACHED VEHICLE ONLY WARRANTY SCHEDULE. The maximum time and mileage limitations in the Warranty Schedule begin on the Date of Delivery to the First Purchaser, as shown below. The accrued time and mileage is calculated when this Vehicle is brought into an Authorized Dealer for correction of Warrantable Failures.

WARRANTY DISCLAIMER AND LIMITATIONS OF LIABILITY

This limited warranty is the sole warranty made by Kenworth and the Selling Dealer. Except for the above limited warranty, Kenworth and the Selling Dealer make no other warranties, express or implied. KENWORTH AND THE SELLING DEALER EXPRESSLY DISCLAIM ANY WARRANTY OF MERCHANTABILITY OR FITNESS FOR A PARTICULAR PURPOSE.

IT IS AGREED THAT KENWORTH AND THE SELLING DEALER SHALL NOT BE LIABLE FOR INCIDENTAL OR CONSEQUENTIAL DAMAGES INCLUDING, BUT NOT LIMITED TO: LOSS OF INCOME OR LOST PROFITS; VEHICLE DOWNTIME; THIRD PARTY DAMAGE, INCLUDING DAMAGE OR LOSS TO OTHER VEHICLES OR PROPERTY, ATTACHMENTS, TRAILERS AND CARGO; LOSS OR DAMAGE TO PERSONAL CONTENTS; COMMUNICATION EXPENSES; LODGING AND/OR MEAL EXPENSES; FINES; APPLICABLE TAXES OR BUSINESS COSTS OR LOSSES; ATTORNEY'S FEES; AND ANY LIABILITY YOU MAY HAVE IN RESPECT TO ANY OTHER PERSON OR ENTITY.

The following components may be warranted directly to you by their respective manufacturers and are NOT warranted by Kenworth: engine and engine accessories, Allison automatic transmission, fifth wheel, tires, wheels and rims, tubes, pintle hook, hitch, batteries not listed in the Vehicle Schedule, refrigerator, trade accessories (such as fire extinguishers, chains, emergency kits, and tools), customer-furnished components installed by the Kenworth factory, and items not installed by the Kenworth factory at the time of the Vehicle's manufacture.

Kenworth does not warrant antifreeze, lubricants, bulbs, fuses, filters, mud-flaps, winter front, wiper nozzles, wiper blades, filter elements, or any other part which is considered a maintenance item.

You are responsible for the safe operation and maintenance of the Vehicle, as specified in the applicable Operator's Manuals. You are responsible for providing proof that all recommended inspections and maintenance have been performed. Before the expiration of the applicable warranty, you must notify an Authorized Dealer of any Warrantable Failures and make the Vehicle available for repair by such Authorized Dealer. You are responsible for delivery of the Vehicle to the Authorized Dealer. Locations in the United States and Canada of authorized Kenworth dealers may be found on WWW.KENWORTH.COM.

KENWORTH IS NOT RESPONSIBLE FOR WEAR AND TEAR OR WEAROUT OF COVERED PARTS, storage deterioration, or changes in adjustment resulting from your use of the Vehicle. This includes, but is not limited to, wear or damage to brake and clutch linings, clutch brake, belts, upholstery, wheel balancing or axle alignment. This list is offered as an example only and shall not be construed as all inclusive.

Kenworth does not warrant metallic chassis (frame) paint. Kenworth is not responsible for paint chipping or fading, peeling paint from frame bolts relating to maintenance, paint peeling from road chemical or salt damage, or corrosion caused by damage to a cab or hood panel or to finish paint.

Damage due to accident, misuse, abuse, neglect, negligence, improper or insufficient maintenance, or unauthorized modification is not warranted.

All warranties are null and void should a Vehicle be converted to a motor coach, motor home, or recreational vehicle.

Vibrations, squeaks, and unusual noises, rattles, loose nuts/bolts can develop during the early use of the vehicle. Kenworth will make the necessary adjustments under warranty up to the earlier of the first 25,000 miles or the first 90 days after the Date of Delivery.

Parts used to repair a Warrantable Failure may be new parts, approved remanufactured parts, or repaired parts. Kenworth is not responsible for failures resulting from the use of parts not approved by Kenworth. A new or approved remanufactured part used to repair a Warrantable Failure assumes the identity of the part it has replaced and is entitled to the remaining warranty coverage, if any.

Chassis Number(s) (17-digit VIN)

Customer Initials _____

Kenworth is not responsible for towing or roadside assistance should there be a defect in the Vehicle. Kenworth is not responsible for damage or loss resulting from engine horsepower/torque upgrades.

Kenworth reserves the right to inspect and download data from the Vehicle and Engine Electronic Control Modules (ECM) for purposes of failure analysis.

TIME LIMIT ON COMMENCING LEGAL ACTION / OTHER TERMS

It is agreed that you have 12 months from the accrual of the cause of action to commence any legal action arising from the purchase or use of the Vehicle, or be barred forever.

To the extent any provision of this limited warranty is found to contravene the law of any jurisdiction, the remainder of the warranty shall not be affected thereby.

KENWORTH TRUCK COMPANY

By: 
National Warranty Manager

I, the undersigned have read the above limited warranty agreement including the attached schedules and understand and accept its terms and acknowledge receipt of a copy of the agreement (3 pages).

X _____ Date: _____
First Purchaser's Signature

Date of Sale: _____

Optional Extended Limited Vehicle
Coverage:

Customer
Initials: _____

Date of Delivery to First Purchaser: _____

I, the above signed, have elected not to purchase an optional extended limited Vehicle coverage at this time on the Vehicle(s) covered by this document.

Dealer

Name/Code: / _____

Reference: _____
First Purchaser's Name (Company or Individual)

City, State: _____

By: _____
Authorized Dealer Representative/Title

Contact Name: _____

Mailing Address: _____

The following pre-delivery items are to be performed by the dealer at the time of the vehicle delivery. Sign off each item as verification that it was performed

<input type="checkbox"/> Review Operation & Service Manual with customer.	Kenworth Truck Company A DIVISION OF PACCAR P.O. Box 1000 Kirkland, WA 98083-1000
<input type="checkbox"/> Explain and demonstrate vehicle accessory operation to customer.	
<input type="checkbox"/> Explain maintenance program to customer.	
<input type="checkbox"/> Re-Explain Kenworth Warranty to customer.	
Dealers Initials: _____	

Chassis Number(s) (17-digit VIN)

Customer Initials _____

KENWORTH TRUCK COMPANY
Medium Duty Warranty Schedule
UNITED STATES
VEHICLE ONLY

THIS VEHICLE WARRANTY SCHEDULE APPLIES ONLY TO ORIGINAL FACTORY EQUIPMENT AND IS SUBJECT TO THE TERMS AND LIMITATIONS IN THE ATTACHED LIMITED WARRANTY AGREEMENT. Pursuant to the terms of the attached Limited Warranty Agreement, Kenworth Truck Company will pay warranty claims for Warrantable Failures within the following maximum limits in time or mileage, **whichever shall occur first**. The Warrantable Failure must be brought to the attention of an Authorized Dealer within 30 days of discovery.

	MONTHS	MILES
Basic Vehicle This coverage applies to the basic highway vehicle, except for additional coverage and warranty exclusions below.	12	Unlimited
Major Components Eaton, Meritor & Dana Spicer front axle, beam, spindles, kingpin & kingpin bushings. Eaton, Meritor & Dana Spicer rear axle, differential assembly, axle shafts & axle housing. Manual transmissions, gears, shafts, case & bell housing. Eaton auto shift. Bendix and Meritor brakes, brackets, cam shafts, spiders and slack adjusters (excludes Air Disc Brakes).	24	Unlimited
Eaton Hybrid Components Hybrid Drive Unit (HDU) with Motors and Electronic Actuator (ECU), Electronic Clutch Actuator (ECA), Power Electronic Carrier (PEC), including batteries, Inverter, Hybrid Control Module (HCM), DC/DC Converter (in Utility Application Only), Auxiliary Power Generator Kit (APG) (in Utility Application Only)	36	150,000
Frame, Gussets, Crossmembers, Cab/Hood Structure, and Cab/Hood Corrosion Frame rails, gussets, and crossmembers. Structural components of the cab and hood. Cab and hood perforation caused by corrosion from within. This warranty does not apply to corrosion caused by damage to a cab panel or to finish paint.	36	Unlimited
Other Coverage		
PACCAR Batteries	12	Unlimited
Heater/Air Conditioner (HVAC)	12	Unlimited
Gaskets and Wheel Seals	12	50,000
Cab and Hood Paint	12	100,000
Frame Paint – Black only	12	100,000
Frame Paint – All colors other than black	6	50,000
Frame Paint – Logger mixer, Dump, Refuse, Oil Field & Construction applications	3	25,000
Severe Service Vehicle – All Kenworth installed components except as excluded herein. Severe Service vehicles are those operated 10% or more on class C or D roads.	12	50,000

Chassis Number(s) (17-digit VIN)

Customer Initials _____

KENWORTH TRUCK COMPANY
Change of Address Form

Important: If the vehicles covered by this agreement change ownership or the Original Owner has a change or correction to their address, please complete this form, notifying Kenworth of the change. This is needed for Federal Recall Campaigns should a vehicle be involved.

Complete this form and return it to Kenworth Truck Company, P.O. Box 1000, Kirkland, WA 98083-1000, Attn: Warranty Dept.

Address Information

Company/Contact: _____

Old Mailing Address: _____

Old City: _____

Old State/Zip: _____

New Mailing Address: _____

New City: _____

New State/Zip: _____

Phone number: _____

Email address: _____

Chassis Number(s)	Date Purchased

**VAC-CON**

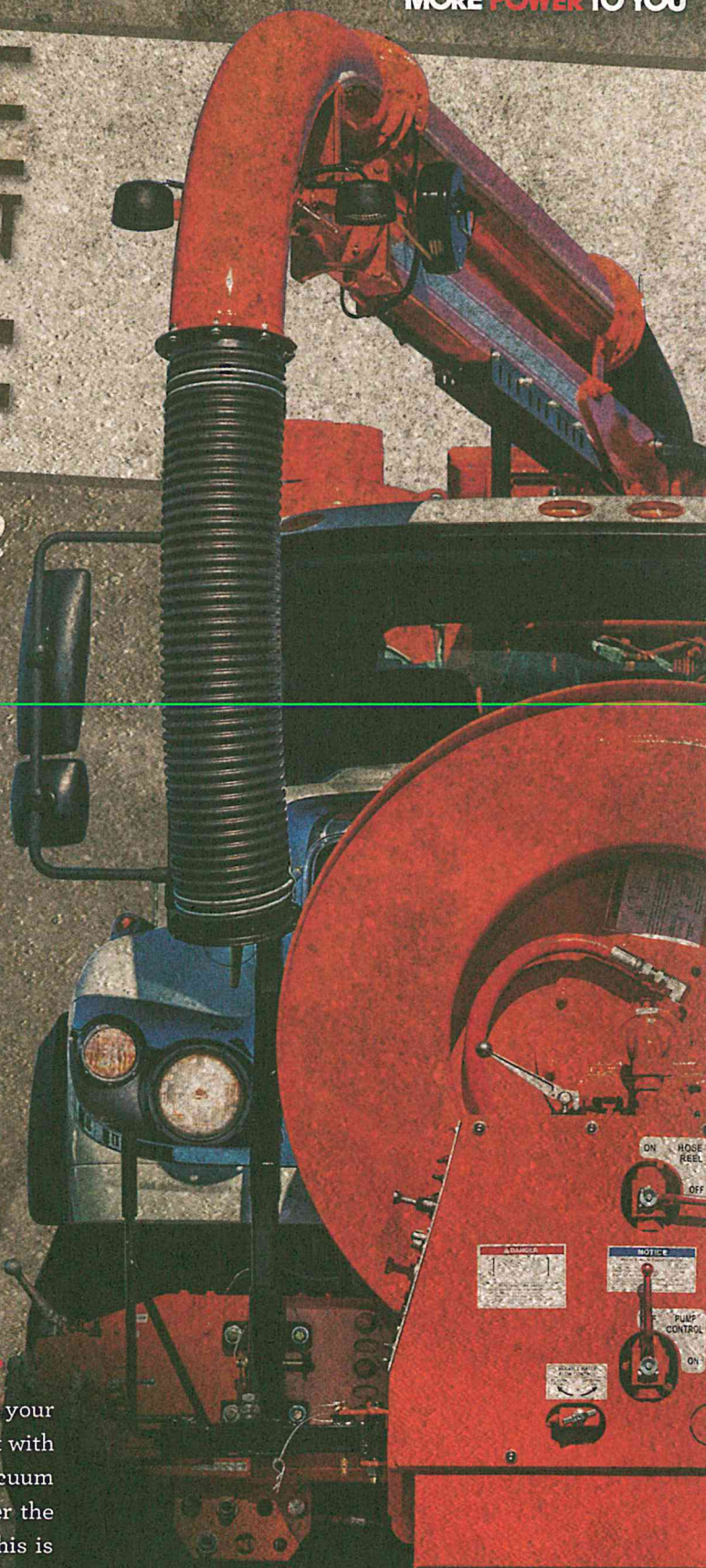
MORE POWER TO YOU

DUAL ENGINE COMBINATION MACHINE:

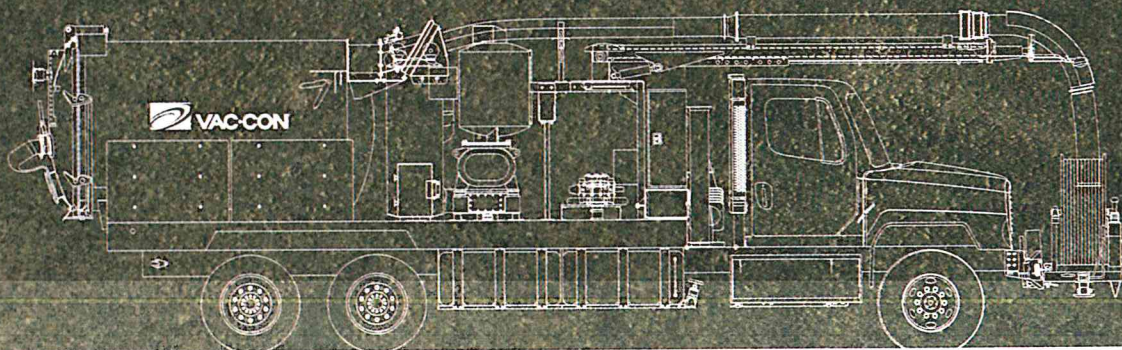
THE *go anywhere
do anything*
TRUCK FOR ALL
YOUR NEEDS

PUTTING THE POWER WHERE YOU NEED IT

Only Vac-Con combines the flexibility of a two-engine design with your choice of a 3-stage fan or positive displacement blower. Consistent with its other designs, Vac-Con uses the chassis engine to drive the vacuum system. Using a standard hydrostatic drive, this design can power the industry's most powerful fan. Offering a wide array of options, this is truly a "go anywhere, do anything" machine.



VAC-CON DUAL ENGINE COMBINATION MACHINE



VEHICLE SPECIFICATIONS

VACUUM DRIVE SYSTEM

- > Hydrostatic variable displacement piston pump driven by chassis engine
- > Hydrostatic fixed displacement piston motor
- > Hydraulically driven heat exchanger fan
- > 110°-190° F operation ranges at 90° F ambient temperature
- > Torsional soft coupling
- > Multi-stage hydraulic filtration system

VACUUM SYSTEM

- > 2 or 3 stage vacuum compressor (fan)
 - > 5-year warranty
- > Optional PD blower with multiple ratings up to 28" Hg and 4,200 CFM

AUXILIARY ENGINE WATER PUMP DRIVE SYSTEM

- > Standard Vac-Con V-10 powered gasoline engine
- > Optional diesel engines up to 185hp
- > Fully independent operation of vacuum and water systems
- > Allows continuous water circulation in motion or stationary
- > Front operator station controls
- > 5-year warranty on drive system (excludes engine and pump)

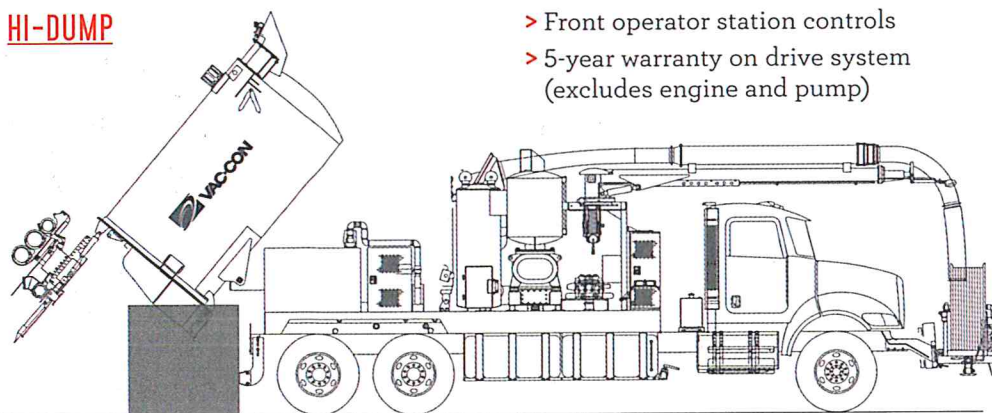
WATER SYSTEM

- > Systems up to 3,000 PSI and 120 GPM with smooth continuous flow and pressure
- > Available hydroexcavation package
- > Available winter recirculation
- > Available air-purge system
- > Cross-linked polyethylene water tanks
 - > 10-year warranty

AUTOMATIC VACUUM BREAKER SHUT-OFF AND FILTRATION

- > Vacuum Breaker
 - > System automatically stops airflow to prevent over-filling and/or spillage during transport
 - > Can be manually controlled from front operator station, wired pendant, or with available wireless remote
- > Filtration
 - > Dual-port separation with dual stainless steel microscreens
 - > Centrifugal separator with easy access inspection door
 - > Optional cyclone separator available for special applications

HI-DUMP



Vac-Con trucks are safe, durable, easy to operate and outperform the competition. A dedicated nationwide dealer network, backed by our **One Touch Customer Service** support program is there to deliver **More Power to You** with every machine.

> YOUR VAC-CON DEALER IS:

Covington Sales & Service, Inc.

P.O. Box 1144

Denham Springs, LA 70726

225.664.7427

www.covingtonsales.com



969 Hall Park Road
Green Cove Springs, FL 32043 USA
PHONE (904) 284-4200
FAX (904) 284-3305
www.vac-con.com
vns@vac-con.com

A subsidiary of Holden Industries, Inc.
Vac-Con is a 100% employee-owned company.
©2016 Vac-Con, all rights reserved