



# Quote

07/20/2023


**Project:**

50542 Mississippi Coast Coliseum  
and Convention Center

**From:**

Douglas Equipment  
Jade Clyburn  
301 North St.  
Bluefield , WV 24701-4048  
304-327-0149

Job Reference Number: 120833

Item	Qty	Description	Sell	Sell Total
1	1 ea	<b>DISHWASHER, FLIGHT TYPE</b> Hobart Model No. FT1000E+BASE Low energy series base model flight type dish machine, 58 gallons of final rinse consumption per hour, with dual rinse, hinged & insulated doors, sliding wash arms without caps, 16" round flange & microprocessor controls with delime notification, Free factory startup for installations within a 100 mile radius of a Hobart service office; installation beyond 100 miles will be charged at the quoted rate by the local Hobart service office ENERGY STAR® 	\$131,962.67	\$131,962.67
	1 ea	Oversized units with crated shipping dimensions greater or equal to 72" in length and/or 90" in height. If delivery is to a facility without a standard height dock, additional shipping charges will apply depending on the service requested. consult Factory.		
	1 ea	All FT1000 models are to be quoted by Hobart's internal quotation group		
	1 ea	Standard warranty - 1-Year parts, labor & travel time during normal working hours within the USA		
	32 ea	Service Labor Hours for Base: Required machine assembly by Hobart Service - for assembly within 100 miles of a Hobart Service Office during normal business hours, with appropriate notice; beyond 100 miles to be quoted by Hobart Service. Includes assembly of this item only, final electrical or plumbing connections by others. For prevailing wage, or projects in correctional /other secure areas, please contact the local service office in advance or project may be subject to additional fees billed at time of assembly.	\$138.00	\$4,416.00
	1 ea	FT1000E-ASR0NO Without Automatic Soil Removal (ASR)		
	1 ea	FT1000E-LPF035 Load Platform 3.5' (Total LOAD length is 3.5' load	\$13,717.29	\$13,717.29

Item	Qty	Description	Sell	Sell Total
		platform +3' prewash = 6'7")		
	1 ea	FT1000E-DRSYES With Dual Rinse		
	1 ea	FT1000E-CTRSTD Standard Non-Split 8' Center Joined (Wash/Power Rinse/Dual Rinse)		
	1 ea	FT1000E-UNL009 9' Unload Section Joined Pack (4.5 + 4.5)	\$26,591.53	\$26,591.53
	1 ea	FT1000ETLG24.765 TLG - Total Length of load, center & unload section is: 24.765 feet (overall length)		
	1 ea	FT1000E-DRY0NO Without Blower Dryer		
	1 ea	FT1000E-HGT6HI 6" Higher than standard height	\$8,148.79	\$8,148.79
	1 ea	FT1000E-EGR0NO Without Energy Recovery System		
	1 ea	FT1000E-AER0NO Without Advansys Energy Recovery (Ventless Technology)		
	1 ea	FT1000E-HTEELE Electric Heat	\$2,580.94	\$2,580.94
	1 ea	FT1000E-ELE0CD 480v/60/3-ph (HV)		
	1 ea	FT1000E-CBRYES With Circuit Breaker		
	1 ea	FT1000E-CON002 (2) Service Connections (refer to specifications sheet for rated amps )		
	1 ea	FT1000E-CBREHN EHN - With Circuit Breaker, Electric, High Voltage, for machines Without Blower Dryer	\$7,574.46	\$7,574.46
	1 ea	FT1000E-BST015 15 kW Electric Booster	\$7,685.18	\$7,685.18
	1 ea	FT1000E-PIPSTD Standard Piping		
	1 ea	FT1000E-DIR0LR Left to right operation		
	1 ea	FT1000E-ACL0NO Without Auto Clean		
	1 ea	FT1000E-ADL0NO Without Auto Delime		
	1 ea	NOTE: For water of 3-grains of hardness or more, Hobart suggests adding a water softener.		
	1 ea	FT1000E-DRNLOD Drain in Load		
	1 ea	FT1000E-DORHNG Hinge doors, all sections		
	1 ea	FT1000E-SEC0NO Without added security		
	1 ea	FT1000E-CNVSTD Standard Conveyor		
	1 ea	FT1000E-ROD0NO Without Cross Rods		
	1 ea	FT1000E-SEF0NO Without SEF Options		
		<b>NOTE: REPLACEMENT FOR SN 271168115</b>		
			<b>ITEM TOTAL:</b>	<b>\$202,676.86</b>
			Total	\$202,676.86

-Freight is included in the unit pricing.

-Installation is included in the unit pricing.

-The customer is responsible for all power supplies and utilities to be within four feet of the install footprint and to match the utility requirements of the units being installed prior to the installer's arrival.

-The installer will be hooking up the new equipment to ALREADY EXISTING utilities.

- The site MUST be ready upon installer's arrival; if it is not, or the installer has to make a second trip, more charges will incur and be the responsibility of the customer.
- We are not responsible for any utility upgrades or architectural modifications if they become necessary.
- This job is being bid site unseen; if the installer, upon arrival, deems that more work is necessary than a standard install, more charges will incur and be the responsibility of the customer. It is assumed that no stairs or doorways will need to be traversed.
- This work is to be done during normal hours, Monday – Friday, 8:00 am – 5:00 pm, holidays excluded.

**Hobart Responsibilities Include:**

- Remove and dispose of existing flight type machine.
- Receive, deliver, and set new equipment in place.
- Existing ductwork removed and transition piece made and installed to new machine footprint.
- All plumbing and electrical final connections within 5' of the machine utility connections.
- Start-ups and operational checks for all new equipment.

**Customer Responsibilities Include:**

- Facility will need to ensure vent fans pull proper CFM for the new flight type.
- Review all spec sheets and make any building electrical, mechanical, and plumbing upgrades needed for all new equipment, prior installation.
- Bring all utilities supply lines within 5 feet of new equipment utility connections.
- Any fabrication work not listed under Hobart responsibilities.
- Any additional field work not listed under Hobart responsibilities.

Acceptance: \_\_\_\_\_ Date: \_\_\_\_\_

Printed Name: \_\_\_\_\_

Project Grand Total: \$202,676.86



Project \_\_\_\_\_  
 AIA # \_\_\_\_\_ SIS # \_\_\_\_\_  
 Item # \_\_\_\_\_ Quantity \_\_\_\_\_ C.S.I. Section 114000



## FT1000e BASE ELECTRIC

### Flight-Type Dishwashing Machine



Advansys model shown



Complies with EPA Reduction of Lead in Drinking Water Act 2014

Meets requirements of ASSE Standard No. 1004

### SPECIFIER STATEMENT

The specified machine shall be a Hobart flight type dish machine, 58 gallons of final rinse consumption per hour, with dual rinse, hinged & insulated doors, 30" wide conveyor belt, sliding wash arms without caps, & microprocessor controls.

### STANDARD FEATURES

- + Pumped rinse system (pressure gauge not required)
- + Water usage 58 gph
- + Digital controls with machine diagnostics
- + Low temperature alert
- + Hinged insulated cabinet-style doors
- + 31" access on prewash, power wash and power rinse chambers; 20" access on dual rinse and ASR chambers
- + Start and stop switches at both ends
- + Doors open indicator
- + Drains open indicator
- + Door interlocks
- + 3½ H.P. prewash, power wash, and power rinse pump motors, all TEFC
- + Capless auto clean wash arms
- + Easy to remove stainless steel scrap pans and baskets
- + 30" wide conveyor belt
- + Dual rinse
- + Front and rear panels
- + Variable speed conveyor
- + Electric booster heater
- + Configurable drain to load or unload

### OPTIONS & ACCESSORIES (Available at extra cost)

- ☐ Insulated split, vertical slide-up doors
- ☐ Multiple conveyor options
- ☐ Factory mounted circuit breakers
- ☐ Correctional packages – standard, medium and maximum options (Contact Hobart for details)
- ☐ Casino packages
- ☐ 6" higher than standard chamber
- ☐ Flanged feet
- ☐ Water hammer arrestor/PRV (installed by others)
- ☐ Drain water tempering kit (installed by others)
- ☐ WS-80 water softener

FT SERIES – FT1000e BASE ELECTRIC

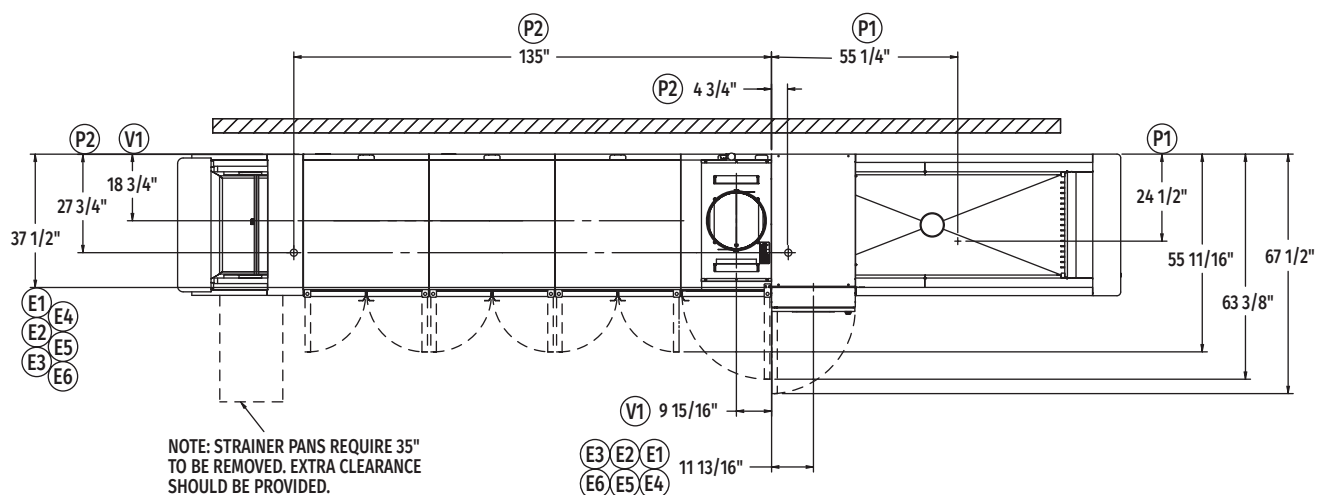
Approved by \_\_\_\_\_ Date \_\_\_\_\_ Approved by \_\_\_\_\_ Date \_\_\_\_\_



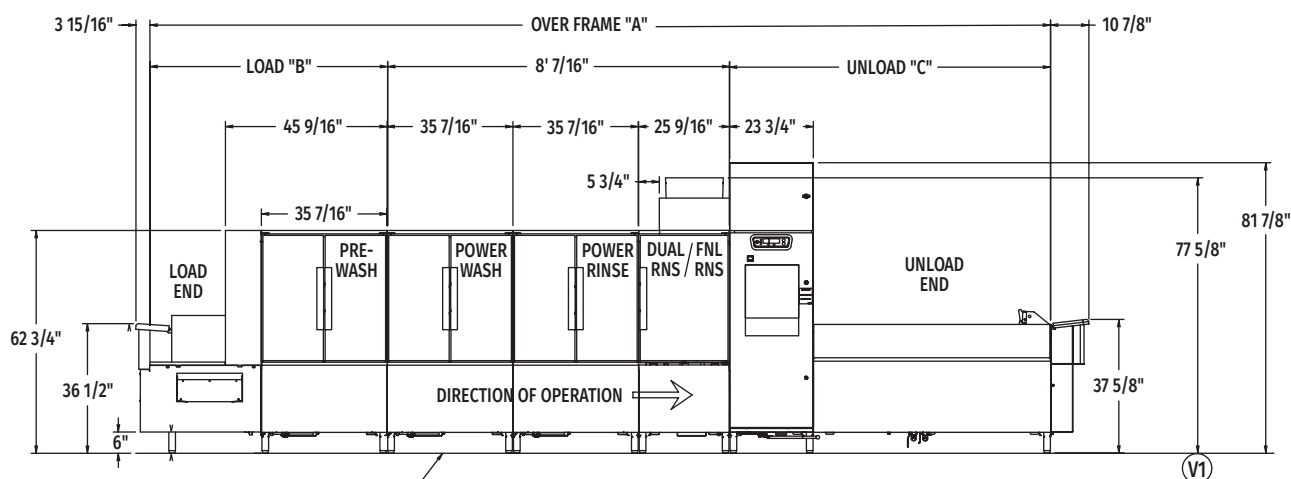
# FT1000e BASE ELECTRIC

## Flight-Type Dishwashing Machine

(Left to Right)



Top View Left to Right

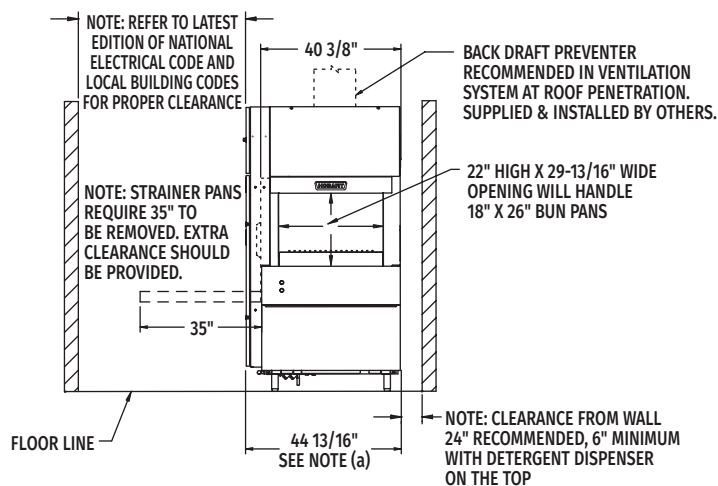


Front View Left to Right

**Note:** Control box electrical connections – see page 5.

MODEL NO.	"A"	"B"	"C"
FT1019e (5.5'-8'-5.5')	19' 2-3/8"	5' 6-15/16"	5' 7"
FT1020e (6.5'-8'-5.5')	20' 2-1/8"	6' 6-11/16"	5' 7"
FT1021e (7.5'-8'-5.5')	21' 1-31/32"	7' 6-17/32"	5' 7"
FT1021e (5.5'-8'-7.5')	21' 1-7/8"	5' 6-15/16"	7' 6-1/2"
FT1022e (6.5'-8'-7.5')	22' 1-5/8"	6' 6-11/16"	7' 6-1/2"
FT1023e (7.5'-8'-7.5')	23' 1-15/32"	7' 6-17/32"	7' 6-1/2"
FT1023e (5.5'-8'-9')	22' 9-5/8"	5' 6-15/16"	9' 2-1/4"
FT1024e (6.5'-8'-9')	23' 9-3/8"	6' 6-11/16"	9' 2-1/4"
FT1025e (7.5'-8'-9')	24' 9-7/32"	7' 6-17/32"	9' 2-1/4"
FT1025e (5.5'-8'-11')	24' 9-1/4"	5' 6-15/16"	11' 1-7/8"
FT1026e (6.5'-8'-11')	25' 9"	6' 6-11/16"	11' 1-7/8"
FT1027e (7.5'-8'-11')	26' 8-27/32"	7' 6-17/32"	11' 1-7/8"
FT1028e (5.5'-8'-15')	28' 4-9/16"	5' 6-15/16"	14' 9-3/16"
FT1029e (6.5'-8'-15')	29' 4-5/16"	6' 6-11/16"	14' 9-3/16"
FT1030e (7.5'-8'-15')	30' 4-5/32"	7' 6-17/32"	14' 9-3/16"
FT1030e (5.5'-8'-17')	30' 4-1/8"	5' 6-15/16"	16' 8-3/4"
FT1031e (6.5'-8'-17')	31' 3-7/8"	6' 6-11/16"	16' 8-3/4"
FT1032e (7.5'-8'-17')	32' 3-23/32"	7' 6-17/32"	16' 8-3/4"

**Note:** Overall length of machine is Dimension "A" + 14-13/16"



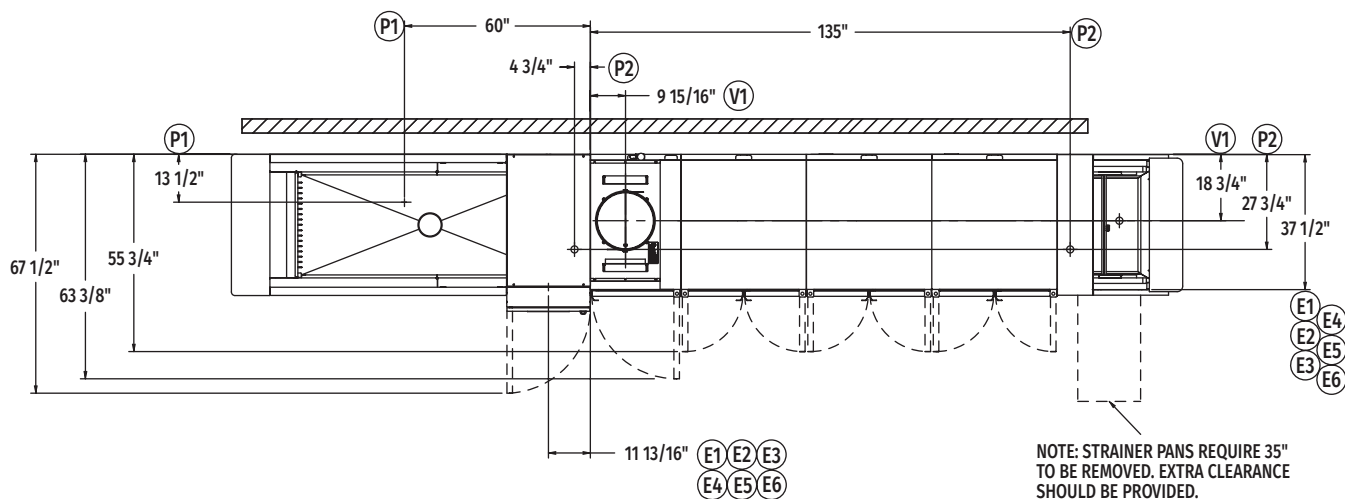
Back/Unload End



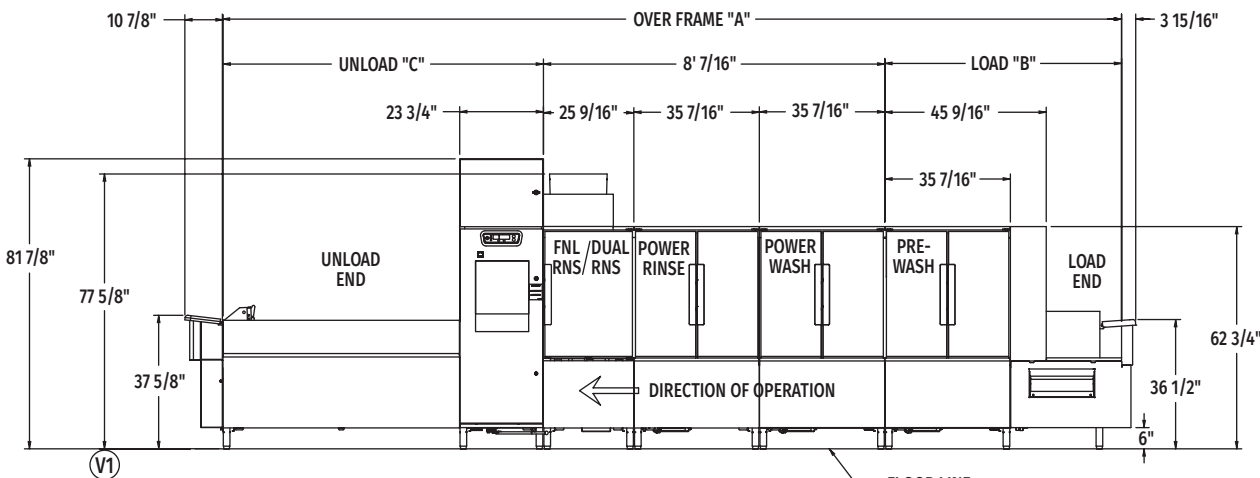
# FT1000e BASE ELECTRIC

## Flight-Type Dishwashing Machine

(Right to Left)



Top View Right to Left

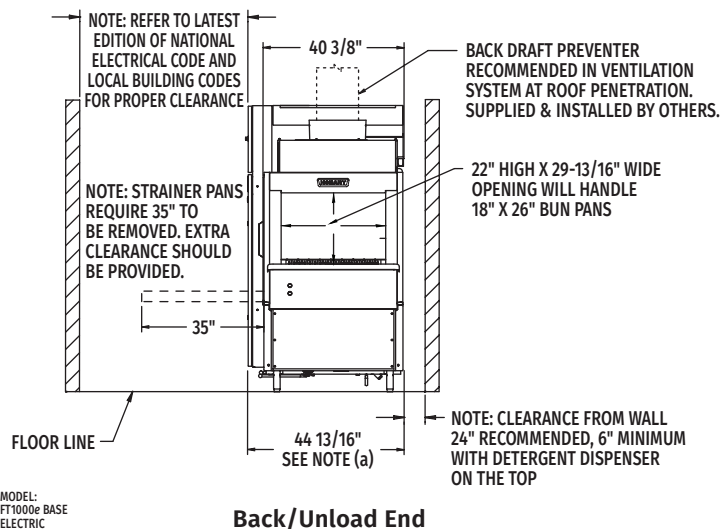


Front View Right to Left

Note: Control box electrical connections – see page 5.

MODEL NO.	"A"	"B"	"C"
FT1019e (5.5'-8'-5.5')	19' 2-3/8"	5' 6-15/16"	5' 7"
FT1020e (6.5'-8'-5.5')	20' 2-1/8"	6' 6-11/16"	5' 7"
FT1021e (7.5'-8'-5.5')	21' 1-31/32"	7' 6-17/32"	5' 7"
FT1021e (5.5'-8'-7.5')	21' 1-7/8"	5' 6-15/16"	7' 6-1/2"
FT1022e (6.5'-8'-7.5')	22' 1-5/8"	6' 6-11/16"	7' 6-1/2"
FT1023e (7.5'-8'-7.5')	23' 1-15/32"	7' 6-17/32"	7' 6-1/2"
FT1023e (5.5'-8'-9')	22' 9-5/8"	5' 6-15/16"	9' 2-1/4"
FT1024e (6.5'-8'-9')	23' 9-3/8"	6' 6-11/16"	9' 2-1/4"
FT1025e (7.5'-8'-9')	24' 9-7/32"	7' 6-17/32"	9' 2-1/4"
FT1025e (5.5'-8'-11')	24' 9-1/4"	5' 6-15/16"	11' 1-7/8"
FT1026e (6.5'-8'-11')	25' 9"	6' 6-11/16"	11' 1-7/8"
FT1027e (7.5'-8'-11')	26' 8-27/32"	7' 6-17/32"	11' 1-7/8"
FT1028e (5.5'-8'-15')	28' 4-9/16"	5' 6-15/16"	14' 9-3/16"
FT1029e (6.5'-8'-15')	29' 4-5/16"	6' 6-11/16"	14' 9-3/16"
FT1030e (7.5'-8'-15')	30' 4-5/32"	7' 6-17/32"	14' 9-3/16"
FT1030e (5.5'-8'-17')	30' 4-1/8"	5' 6-15/16"	16' 8-3/4"
FT1031e (6.5'-8'-17')	31' 3-7/8"	6' 6-11/16"	16' 8-3/4"
FT1032e (7.5'-8'-17')	32' 3-23/32"	7' 6-17/32"	16' 8-3/4"

Note: Overall length of machine is Dimension "A" + 14-13/16"



Back/Unload End



## FT1000e BASE ELECTRIC

### Flight-Type Dishwashing Machine

#### LEGEND

Electrical Connections	
E1	Electric connection for 1TB with or without circuit breakers. 79-1/8" AFF.
E2	Electric connection for 2TB without circuit breakers. 79-1/8" AFF.
E3	Electric connection for 3TB without circuit breakers. 79-1/8" AFF.
E4	Electric connection for 4TB without circuit breakers. 79-1/8" AFF.
E5	Electric connection for 5TB without circuit breakers. 79-1/8" AFF.
E6	Electric connection for 2TB with circuit breakers. 79-1/8" AFF.
Plumbing Connections	
P1	Common hot water connection (automatic fill) 110° F water minimum, 1" FPT, 5-1/2" AFF.
P2	Drain connection: Default location is drain to unload. May be drained to either end of unit. 2" FPT, 7" AFF.
Ventilation Connections	
V1	Customers' vent connection. Must fit inside 16" diameter vent stack providing 750 CFM exhaust at machine connection @ .75" water column (standard air conditions). Back draft damper is RECOMMENDED ON ALL BAS models. 77-5/8" AFF.

#### SERVICE CONNECTIONS WITH CIRCUIT BREAKERS (2 CONNECTIONS)

E1	Motors, Controls, Power Rinse & Booster Heat (1TB) (1) Service Connection as Shown Below			
	Voltage	Rated Amps	Minimum Supply Circuit Ampacity	Maximum Protective Device
	208/60/3	139.0	175	175
	240/60/3	125.6	175	175
	480/60/3	66.9	90	90
E6	Wash, Dual Rinse Heat (2TB) (1) Service Connection as Shown Below			
	Voltage	Rated Amps	Minimum Supply Circuit Ampacity	Maximum Protective Device
	208/60/3	79.7	100	100
	240/60/3	69.0	90	90
	480/60/3	34.5	45	45

**WARNING:** Plumbing and electrical connections should be made by qualified personnel who will observe all the applicable plumbing, sanitary, safety codes and National Electrical Code.

#### General Notes:

(a) The control box is attached to the center section and is rotated 90 degrees for shipping.

AFF = Above Finished Floor

All dimensions taken from the floor line may increase 3-1/4" with leg adjustment.

For convenience when cleaning, customer should install water tap near machine with 30 ft. of heavy duty hose with squeeze valve.

This drawing is supplied as a reference for connection information only. It will not be utilized for manufacturing of unit.

#### Electrical Notes:

Service wire temperature rating: 90°C minimum.

Detergent and rinse aid feeder service connections standard on all FT1000e models at machine line voltage.

#### Plumbing Notes:

Recommended building flowing hot water pressure to the dishwasher is 30-35 PSI.

Water hammer arrestor (meeting ASSE-1010 standard or equivalent) to be supplied (by others) in hot supply line at service connection.

#### Ventilation Notes:

Room ventilation is required to handle machine's latent & sensible heat. Majority of latent/sensible heat at unload end of machine.

Vent fan control standard on all FT1000e models.

#### Water Quality Required:

Total water hardness < 3 grains per gallon.

Total suspended solids (TSS) < 10 microns.

Heat Gain to Space (BTU/Hr.)	
Latent	Sensible
72,200	30,900





## FT1000e BASE ELECTRIC Flight-Type Dishwashing Machine

### SERVICE CONNECTION WITH CIRCUIT BREAKERS (SINGLE POINT ELECTRICAL CONNECTION)

E1	Motors, Controls, Dual Rinse & Power Rinse (1TB), Wash & Booster Heat		
Voltage	Rated Amps	Minimum Supply Circuit Ampacity	Maximum Protective Device
480/60/3	101.4	150	150

### SERVICE CONNECTIONS WITHOUT CIRCUIT BREAKERS (5 CONNECTIONS)

E1	Motors & Controls (1TB) (1) Service Connection as Shown Below		
Voltage	Rated Amps	Minimum Supply Circuit Ampacity	Maximum Protective Device
208-240/60/3	38.0	50	50
480/60/3	23.1	30	30
E2	Electric Tank Heat, Power Rinse (2TB) (1) 21.4 kW Connection as Shown Below		
Voltage	Rated Amps	Minimum Supply Circuit Ampacity	Maximum Protective Device
208/60/3	59.4	80	80
240/60/3	51.5	70	70
480/60/3	25.7	35	35
E3	Electric Tank Heat, Wash (3TB) (1) 18 kW Connection as Shown Below		
Voltage	Rated Amps	Minimum Supply Circuit Ampacity	Maximum Protective Device
208/60/3	50.0	70	70
240/60/3	43.3	60	60
480/60/3	21.7	30	30
E4	Electric Tank Heat, Dual Rinse (4TB) (1) 10.7 kW Service Connection as Shown Below		
Voltage	Rated Amps	Minimum Supply Circuit Ampacity	Maximum Protective Device
208/60/3	29.7	40	40
240/60/3	25.7	35	35
480/60/3	12.9	20	20
E5	Electric Booster (5TB) (1) 15 kW Connection as Shown Below		
Voltage	Rated Amps	Minimum Supply Circuit Ampacity	Maximum Protective Device
208/60/3	41.6	60	60
240/60/3	36.1	50	50
480/60/3	18.0	25	25

### SPECIFICATIONS

#### Capacities

Conveyor Speed (feet per minute)	4.0 - 8.5
Dishes per Hour	14,316
Pre-Wash Tank (U.S. gallons)	40
Wash Tank (U.S. gallons)	40
Rinse Tank (U.S. gallons)	40
Dual Rinse Tank (U.S. gallons)	7.2

#### Motor Horsepower

Pre-Wash Tank	3½
Wash Tank	3½
Rinse Tank	3½
Dual Rinse Tank	¾
Final Rinse	½
Conveyor	¾

#### Water Consumption

U.S. Gallons per Hour (maximum use)	58
U.S. Gallons per Minute	0.97

#### Heating

Tank Heat, Electric	Total tank heat - 50.1 kW (kW regulated) (Wash, Rinse, Dual Rinse)
Electric Booster (kW)	15

**Shipping Weight (approximate)** . . . Varies by individual model  
(Consult your Hobart representative)

**Crated Dimensions** . . . . . Varies by individual model  
(Consult your Hobart representative)

FT1000 Advansys Water Treatment System	
Model	Description
WS-80	Water Softener
Available through Hobart Service only	
PF-10-EHT	Hi-Temp Filter Housing
SD-510HT	Sediment Filter Cartridge

#### CONTROL BOX ELECTRICAL CONNECTIONS



\*Note for installing electrician: Repunch holes E1 and E6 as required to coincide with conduit requirements for machines with circuit breakers.

**Detail "A-A"**  
(not to scale)

As continued product improvement is a policy of Hobart, specifications are subject to change without notice.





# Oversized Equipment Quick Reference Guide

Oversized units with crated shipping dimensions greater or equal to 72" in length and/or 90" in height. If delivery is to a facility without a standard height dock, additional shipping charges will apply depending on the service requested.

## HOBART

DOOR TYPES	CONVEYOR TYPES (CL, FT)	PREP WASHERS	TURBOWASHERS (TW), TOTEWASHERS (CL64T) WASTE PULPERS (WPS)	WRAPPING SYSTEM (NGW)
<ul style="list-style-type: none"> <li>AM15T</li> <li>AM15VLT</li> </ul>	<ul style="list-style-type: none"> <li>CL44eN-ADV</li> <li>CL44eNVL</li> <li>All 54" Models or Greater</li> <li>All FT Models</li> </ul>	<ul style="list-style-type: none"> <li>PW10eR</li> <li>PW20eR</li> <li>PWVeR</li> </ul>	<ul style="list-style-type: none"> <li>All Models</li> </ul>	<ul style="list-style-type: none"> <li>All Models</li> </ul>



G, R and A SERIES	UNDERCOUNTERS (UHT, UHD, ULT, TU)	PREP TABLES (UST, USD, UPT, UPD, TS, TB)	EQUIPMENT STANDS (TE)	UNDERCOUNTERS (CLUC) & PREP TABLES (CLPT)
<ul style="list-style-type: none"> <li>All Roll-In &amp; Roll-Thru Models</li> <li>All Three Section Models</li> </ul>	<ul style="list-style-type: none"> <li>All 72" Models or Greater</li> </ul>	<ul style="list-style-type: none"> <li>TB - 60" Models or Greater</li> <li>TS - 66" Models or Greater</li> <li>All 72" Models or Greater</li> </ul>	<ul style="list-style-type: none"> <li>All Models 48" or Greater</li> </ul>	<ul style="list-style-type: none"> <li>All 72" Models or Greater</li> </ul>



THE INFORMATION PROVIDED IS TO BE USED AS A QUICK REFERENCE GUIDE ONLY. PLEASE CONSULT ITW FEG CUSTOMER CARE FOR UNITS NOT LISTED OR ANY QUESTIONS SURROUNDING DELIVERY OPTIONS.