



CENTRALBIDDING
FROM CENTRAL AUCTION HOUSE

**5000134288 PURCHASE OF BUTTERFLY VALVE AND VALVE SEAT
GATES FOR THE JEFFERSON PARISH EASTBANK WAREHOUSE**
Jefferson Parish Government

Project documents obtained from www.CentralBidding.com

20-Apr-2021 09:42:31 AM



BID 50-134288

**Purchase of butterfly valve and valve seat gates for the Jefferson
Parish Eastbank Warehouse**

April 20, 2021 @ 11:00 A.M.

ATTENTION VENDORS!!!

**Please review all pages and respond accordingly, complying with all provisions
in the technical specifications and Jefferson Parish Instructions for Bidders and
General Terms and Conditions. All bids must be received on the Purchasing
Department's eProcurement site, www.jeffparishbids.net, by the bid due date
and time.**

**Please Email Questions to:
Rae Lynn Hartman
RScott@jeffparish.net
504-364-2688**



JEFFERSON PARISH

DEPARTMENT OF PURCHASING

CYNTHIA LEE SHENG
PARISH PRESIDENT

RENNY SIMNO
DIRECTOR

September 2020

Changes to Jefferson Parish Bidding Information

The Jefferson Parish Purchasing Department would like to make vendors aware of the following changes:

Total Bid Price Must Include the Cost of Naming Jefferson Parish as Additional Insured:

Bidder acknowledges that Bidder recovered the cost of any required insurance in the contract price as required by La.R.S. 9:2780.1 and that Bidder recovered any such cost for the purposes of insuring an obligation to indemnify Jefferson Parish, defend Jefferson Parish, or hold Jefferson Parish harmless and that Bidder's indemnity liability is limited to the amount of the proceeds that are payable under the insurance policy or policies that Bidder has obtained.

Electronic Procurement: Beginning November 1, 2020, Jefferson Parish will no longer accept manual bid submissions; and will only accept bid submissions electronically via our e-Procurement system, Central Bidding. Central Bidding can be accessed by visiting either www.centralbidding.com or www.jeffparishbids.net. All bidders will be required to register with Central Bidding. Jefferson Parish vendors are able to register for free by accessing the following link:
<https://www.centrauctionhouse.com/registration.php>.

Probable Construction Cost: Per Jefferson Parish Administrative Policy, the probable construction cost is not revealed in the Jefferson Parish Bidding Documents. Jefferson Parish Administrative Policy has changed and a range of the probable construction cost will be stated in the Jefferson Parish bidding document, entitled Important Notice to All Bidders – Bid Requirements. Per Louisiana Public Bid Law, the probable construction cost will be read at the bid opening.

Insurance Requirement: All bidders must provide proof of valid insurance in the required amounts as stated in the Standard Insurance Requirements for bidding purposes. Failure to provide the proof of valid insurance in all of the required coverage amounts will result in bid rejection.

GENERAL GOVERNMENT BLDG. – 200 DERBIGNY ST., SUITE 4400, GRETN. LA 70053
OFFICE 504.364.2678

JOSEPH S. YENNI BLDG. – 1221 ELMWOOD PARK BLVD., SUITE 404, JEFFERSON, LA 70123
OFFICE 504.364.2678

EMAIL: PURCHASING@JEFFPARISH.NET WEBSITE: WWW.JEFFPARISH.NET

DATE: 4/14/2021

INVITATION TO BID
THIS IS NOT AN ORDER

Page: 1

BID NO.: 50-00134288

JEFFERSON PARISH

PURCHASING DEPARTMENT
P.O. BOX 9
GRETN, LA. 70054-0009
504-364-2678

VENDOR: 27118 BLANK BID COPY VENDOR

BUYER: RSCOTT@jeffparish.net

Bids will be received until 11:00 AM, 4/20/2021 via online at www.jeffparishbids.net.

LATE BIDS WILL NOT BE ACCEPTED

NOTE: ONLY BIDS WRITTEN IN INK OR TYPEWRITTEN, AND PROPERLY SIGNED BY A MEMBER OF THE FIRM OR AUTHORIZED REPRESENTATIVE, WILL BE ACCEPTED. PENCIL AND/OR PHOTOSTATIC FIGURES OR SIGNATURES SHALL RESULT IN BID REJECTION. HOWEVER, ELECTRONIC SIGNATURES AS DEFINED IN LSA - R.S. 9:2602(8) ARE ACCEPTABLE. SIGNATURE MUST BE A SECURED DIGITAL SIGNATURE.

All bids submitted are subject to these instructions and general conditions and any special conditions and specifications contained herein, all of which are made part of this bid proposal reference. By submitting a bid, vendor agrees to comply with all provisions of Louisiana Law, as well be in compliance with the Jefferson Parish Code of Ordinances, Louisiana Code of Ethics, applicable Jefferson Parish ethical standards and Jefferson Parish Resolution No. 113646 and/or Resolution No. 113647 as amended. A copy of these resolutions may be obtained from the Office of the Parish Clerk, Suite 6700, Jefferson Parish General Government Building, 200 Derbigny Street, Gretna, LA 70053. You may also obtain a copy by visiting the Purchasing Department webpage at purchasing.jeffparish.net and clicking on On-line forms.

All vendors submitting bids should register as a Jefferson Parish vendor if not already yet registered. Registration forms may be downloaded from <http://purchasing.jeffparish.net> and by clicking on Vendor Information. Current W-9 forms with respective Tax Identification numbers and vendor applications may be submitted at any time; however, if your company is not registered and/or a current W-9 form is not on file, vendor registration is mandatory. Vendors may experience a delay in payment if your company is not a registered vendor with Jefferson Parish.

Jefferson Parish is exempt from paying sales tax under LSA-R.S. 47:301 (8)(c). All prices for purchases by Jefferson Parish of supplies and materials shall be quoted in the unit of measure specified and unless otherwise specified, shall be exclusive of state and local taxes. The price quoted for work shall be stated in figures. In the event there is a difference in unit prices and totals, the unit price shall prevail. Quotations shall be based on F.O.B. Delivered, anywhere within the Parish as designated by the Purchasing Department. JEFFERSON PARISH WILL ACCEPT ONE BID ONLY FROM EACH VENDOR. Items bid must meet specifications. JEFFERSON PARISH will accept one price for each item unless otherwise indicated. Two or more prices for one item will result in bid rejection. Bidders are required to complete, sign and return the bid form and/or complete and return the associated line item pricing forms as indicated. The price quoted for work shall be stated in figures. In the event there is a difference in unit prices and totals, the unit prices shall prevail.

JEFFERSON PARISH reserves the right to award contracts or place orders on a lump sum or individual item basis, or such combination, as shall in its judgment be in the best interest of JEFFERSON PARISH. Every contract or order shall be awarded to the LOWEST RESPONSIVE and RESPONSIBLE BIDDER, taking into consideration the CONFORMITY WITH THE SPECIFICATIONS and the DELIVERY AND/OR COMPLETION DATE.

PROTESTS: Only those vendors that submit bids in response to this solicitation may protest any element of the procurement, in writing to the Director of the Purchasing Department. Written protest must be received within 48 hours of the release of the bid tabulation by the Purchasing Department. After consultation, the Parish Attorney's Office will then respond to protests in writing. (For more information, please see Chapter 2, Article VII, Division 2, Sec. 2-914.1 of the Jefferson Parish Code of Ordinances.)

JEFFERSON PARISH reserves the right to cancel all or any part of an order if not shipped promptly. No charges will be allowed for parking or cartage unless specified in the quotation. The order must not be filled at a higher price than quoted. JEFFERSON PARISH reserves the right to cancel at any time and for any reason by issuing a THIRTY (30) day written notice to the contractor.

JEFFERSON PARISH requires all products to be new (current) and all work must be performed according to standard practices for the project. Unless otherwise specified, no aftermarket parts will be accepted. Unless otherwise specified, all workmanship and materials must have at least one (1) year guaranty, in writing, from the date of delivery and/or acceptance of the project. Any deviations or alteration from the specifications must be indicated on the bid form for each item and upon request, product data for same must be submitted by the time specified by the Purchasing Department.

If this bid requires a pre-bid conference (see Additional Requirements section), bidders are advised that such conference will be held to allow bidders the opportunity to identify any discrepancies in the bid specifications and seek further clarification regarding instructions. The Purchasing Department will issue a written response to bidders' questions in the form of an Addendum.

All formal Addenda require written acknowledgment on the bid form by the bidder by the bidder placing the Addendum number in the appropriate section. Failure to acknowledge an Addendum on the bid form shall cause the bid to be rejected; JEFFERSON PARISH reserves the right to award bid to next lowest responsive and responsible bidder in this event.

USE OF BRAND NAMES AND STOCK NUMBERS: Where brand names and stock numbers are specified, it is for the purpose of establishing certain minimum standards of quality. Bids may be submitted for products of equal quality, provided brand names and stock numbers are specified. Complete product data may be required prior to award.

Quantities listed are for bidding purposes only. Actual requirements may be more or less than quantities listed.

INSTRUCTIONS FOR BIDDERS AND GENERAL CONDITIONS

Bidders are not to exclude from participation in, deny the benefits of, or subject to discrimination under any program or activity, any person in the United States on the grounds of race, color, national origin, or sex; nor discriminate on the basis of age under the Age Discrimination Act of 1975, or with respect to an otherwise qualified handicapped individual as provided in Section 504 of the Rehabilitation Act of 1973, or on the basis of religion, except that any exemption from such prohibition against discrimination on the basis of religion as provided in the Civil Rights Act of 1964, or Title VI and VII of the Act of April 11, 1968, shall also apply. This assurance includes compliance with the administrative requirements of the Revenue Sharing final handicapped discrimination provisions contained in Section 51.55 (c), (d), (e), and (k)(5) of the Regulations. New construction or renovation projects must comply with Section 504 of the 1973 Rehabilitation Act, as amended, in accordance with the American National Standard Institute's specifications (ANSI A1 17.1-1961).

Jefferson Parish and its partners as the recipients of federal funds are fully committed to awarding a contract(s) to firm(s) that will provide high quality services and that are dedicated to diversity and to containing costs. Thus, Jefferson Parish strongly encourages the involvement of minority and/or woman-owned business enterprises (DBE's, including MBE's, WBE's and SBE's) to stimulate participation in procurement and assistance programs.

IN ACCORDANCE WITH STATE REGULATIONS JEFFERSON PARISH OFFERS ELECTRONIC PROCUREMENT TO ALL VENDORS

This electronic procurement system allows vendors the convenience of reviewing and submitting bids online.

This is a secure site and authorized personnel have limited read access only. Bidders are to submit electronically using this free service; while the website accepts various file types, one single PDF file containing all appropriate and required bid documents is preferred. Bidders submitting uploaded images of bid responses are solely responsible for clarity. If uploaded images/documents are not legible, then bidder's submission will be rejected. Please note all requirements contained in this bid package for electronic bid submission.

Please visit our E-Procurement Page at www.jeffparishbids.net to register and view Jefferson Parish solicitations. For more information, please visit the Purchasing Department page at <http://purchasing.jeffparish.net>.

ADDITIONAL REQUIREMENTS FOR THIS BID

PLEASE MATCH THE NUMBERS PRINTED IN THIS BOX WITH THE CORRESPONDING INSTRUCTIONS BELOW.

13

1. All bidders must attend the MANDATORY pre-bid conference and will be required to sign in and out as evidence of attendance. In accordance with LSA R.S. 38:2212(I), all prospective bidders shall be present at the beginning of the MANDATORY pre-bid conference and shall remain in attendance for the duration of the conference. Any prospective bidder who fails to attend the conference or remain for the duration shall be prohibited from submitting a bid for the project.
2. Attendance to this pre-bid conference is optional. However, failure to attend the pre-bid conference shall not relieve the bidder of responsibility for information discussed at the conference. Furthermore, failure to attend the pre-bid conference and inspection does not relieve the successful bidder from the necessity of furnishing materials or performing any work that may be required to complete the work in accordance with the specification with no additional cost to the owner.
3. Contractor must hold current applicable JEFFERSON PARISH licenses with the Department of Inspection and Code Enforcement. Contractor shall obtain any and all permits required by the JEFFERSON PARISH Department of Inspection and Code Enforcement. The contractor shall be responsible for the payment of these permits. All permits must be obtained prior to the start of the project. Contractor must also hold any and all applicable Federal and State licenses. Contractor shall be responsible for the payment of these permits and shall obtain them prior to the start of the project.
4. A LA State Contractor's License will be required in accordance with LSA R.S. 37-2150 et. seq. and such license number will be shown on the outside of the bid electronic envelope. Failure to comply will cause the bid to be rejected. When submitting the bid electronically, the license number must be entered in the appropriate field in the electronic procurement system. Failure to comply will cause the bid to be rejected.

INSTRUCTIONS FOR BIDDERS AND GENERAL CONDITIONS

5. It is the bidder's responsibility to visit the job site and evaluate the job before submitting a bid.
6. Job site must be clean and free of all litter and debris daily and upon completion of the contract. Passageways must be kept clean and free of material, equipment, and debris at all times. Flammable material must be removed from the job site daily because storage will not be permitted on the premises. Precaution must be exercised at all times to safeguard the welfare of JEFFERSON PARISH and the general public.
7. **PUBLIC WORKS BIDS:** All awards for public works in excess of \$5,000.00 will be reduced to a formal contract which shall be recorded at the contractor's expense with the Clerk of Court and Ex-Officio Recorder of Mortgages for the Parish of Jefferson. A price list of recordation costs may be obtained from the Clerk of Court and Ex-Officio Recorder of Mortgages for the Parish of Jefferson. All awards in excess of \$25,000.00 will require both a performance and a payment bond. Unless otherwise stated in the bid specifications, the performance bond requirements shall be 100% of the contract price. Unless otherwise state in the bid specifications, the payment bond requirements shall be 100% of the contract price. Both bonds shall be supplied at the signing of the contract.
8. **NON-PUBLIC WORKS BIDS:** A performance bond will be required for this bid. The amount of the bond will be 100% of the contract price unless otherwise indicated in the specifications. The performance bond shall be supplied at the signing of the contract.
9. **NON-PUBLIC WORKS BIDS:** A payment bond will be required for this bid. The amount of the bond will be 100% of the contract price unless otherwise indicated in the specifications. The payment bond shall be supplied at the signing of the contract.
10. All bidders must comply with the requirements stated in the attached "Standard Insurance Requirements" sheet attached to this bid solicitation. Failure to comply with this instruction will result in bid rejection.
11. A bid bond will be required with bid submission in the amount of 5% of the total bid, unless otherwise stated in the bid specifications. All sureties must be in original format (no copies). When submitting a bid online, vendors must submit an electronic bid bond through the respective online clearinghouse bond management system(s) as indicated in the electronic bid solicitation on Central Auction House. No scanned paper copies of any bid bond will be accepted as part of the electronic bid submission.
12. This is an as needed basis contract. JEFFERSON PARISH makes no representations on warranties with regard to minimum guaranteed quantities unless otherwise stated in the bid specifications.
13. Freight charges should be included in total cost when quoting. If not quoted FOB DELIVERED, freight must be quoted as a separate item. Bid may be rejected if not quoted FOB DELIVERED or if freight charges are not indicated on bid form.
14. **PUBLIC WORKS BIDS - Completed, Signed and Properly Notarized Affidavits Required;** This applies to all solicitations for construction, alteration or demolition of public buildings or projects, in conformity with the provisions contained in LSA-RS 38:2212.9, LSA-RS 38:2212.10, LSA-RS 38:2224, and Sec 2-923.1 of the Jefferson Parish Code of Ordinances. For bidding purposes, all bidders must submit with bid submission COMPLETED, SIGNED and PROPERLY NOTARIZED Affidavits, including: Non-Conviction Affidavit, Non-Collusion Affidavit, Campaign Contribution Affidavit, Debt Disclosures Affidavit and E-Verify Affidavit. For the convenience of vendors, all affidavits have been combined into one form entitled PUBLIC WORKS BID AFFIDAVIT. This affidavit must be submitted in its original format, and without material alteration, in order to be compliant and for the bid to be considered responsive. A scanned copy of the completed, signed and properly notarized affidavit may be submitted with the bid, however, the successful bidder must submit the original affidavit in its original format and without material alteration upon contract execution. Failure to comply will result in the bid submission being rejected as non-responsive. The Parish reserves the right to award bid to the next lowest responsive and responsible bidder in this event.
15. **NON PUBLIC WORK BIDS - Completed, Signed and Properly Notarized Affidavits Required** in conformity with the provisions contained in LSA – RS 38:2224 and Sec 2-923.1 of the Jefferson Parish Code of Ordinances. For bidding purposes, all bidders must submit with bid submission COMPLETED, SIGNED and PROPERLY NOTARIZED Affidavits, including: Non-Collusion Affidavit, Debt Disclosures Affidavit and Campaign Contribution Affidavit. For the convenience of vendors, all affidavits have been combined into one form entitled NON PUBLIC WORKS BID AFFIDAVIT. This affidavit must be submitted in its original format, and without material alteration, in order to be compliant and for the bid to be considered responsive. A scanned copy of the completed, signed and properly notarized affidavit may be submitted with the bid, however, the successful bidder must submit the original affidavit in its original format and without material alteration upon contract execution. Failure to comply will result in the bid submission being rejected as non-responsive. The Parish reserves the right to award bid to the next lowest responsive and responsible bidder in this event.

DATE: 4/14/2021

BID NO.: 50-00134288

Page: 4

INSTRUCTIONS FOR BIDDERS AND GENERAL CONDITIONS

16. The ensuing contract for this bid solicitation may be eligible for FEMA reimbursement and/or Federal funding/reimbursement. As such, the referenced appendix will be applicable accordingly and shall be considered a part of the bid documents. All applicable certifications must be duly completed, signed and submitted with bid submission. Failure to submit applicable certifications with bid submission will result in bid rejection.

17. For this project, the Contractor shall not pay any state or local sales or use taxes on materials and equipment which are affixed and made part of the immovable property of the project or which is permanently incorporated in the project (hereinafter referred to as "applicable materials and equipment"). All purchases of applicable materials or equipment shall be made by the contractor on behalf of and as the agent of Jefferson Parish (Owner), a political subdivision of the State of Louisiana. No state and local sales and use taxes are owed on applicable materials and equipment under the provisions of Act 1029 of the 1991 Regular Session - Louisiana Revised Statute 47:301(8)(c). Owner will furnish to contractor a certificate form which certifies that Owner is not required to pay such state or local sales and use taxes, and contractor shall furnish a copy of such certificate to all vendors or suppliers of the applicable materials and equipment, and report to Owner the amount of taxes not incurred.

It shall be the duty of every parish officer, employee, department, agency, special district, board, and commission; and the duty of every contractor, subcontractor, and licensee of the parish, and the duty of every applicant for certification of eligibility for a parish contract or program, to cooperate with the Inspector General in any investigation, audit, inspection, performance review, or hearing pursuant to Jefferson Parish Code of Ordinances Section 2-155.10(19). By submitting a bid, vendor acknowledges this and will abide by all provisions of the referenced Jefferson Parish Code of Ordinances.

DATE: 4/14/2021

INVITATION TO BID
THIS IS NOT AN ORDER

Page: 5

BID NO.: 50-00134288

JEFFERSON PARISH

PURCHASING DEPARTMENT
P.O. BOX 9
GRETN, LA. 70054-0009
504-364-2678

VENDOR: 27118 BLANK BID COPY VENDOR

BUYER: RSCOTT

As per LSA-RS 47:301 et seq., all governmental bodies are excluded from payment of sales taxes to any Louisiana taxing body. Quotations shall be based on F.O.B. Agency warehouse or jobsite, anywhere within the Parish as designated by the Purchasing Department.

JEFFERSON PARISH reserves the right to cancel all or any part of an order if not shipped promptly. No charges will be allowed for parking or cartage unless specified in quotation. The order must not be filled at a higher price than quoted. JEFFERSON PARISH reserves the right to cancel at any time and for any reason by issuing a THIRTY (30) day written notice to the contractor.

JEFFERSON PARISH is expecting all products to be new and all work to be done in workman-like manner, according to standard practices. Any deviations or alteration from the specifications must be indicated on the bid form for each item and upon request, product data for same must be submitted by the time specified by the Purchasing Department.

DELIVERY: FOB JEFFERSON PARISH

INDICATE DELIVERY DATE ON EQUIPMENT AND SUPPLIES

7-10 Days

INDICATE STARTING TIME (IN DAYS) FOR CONSTRUCTION WORK

INDICATE COMPLETION TIME (IN DAYS) FOR CONSTRUCTION WORK

In the event that addenda are issued with this bid, bidders MUST acknowledge all addenda on the bid form. Bidder must acknowledge receipt of an addendum on the bid form by placing the addendum number as indicated. Failure to acknowledge any addendum on the bid form will result in bid rejection.

Acknowledge Receipt of Addenda: NUMBER: _____

NUMBER: _____

NUMBER: _____

NUMBER: _____

LOUISIANA CONTRACTOR'S LICENSE NO.: (if applicable) _____

***** ALL BIDDERS MUST COMPLETE SECTION BELOW *****

FIRM NAME:

Water Technology Resources

SIGNATURE:

(Must be signed here)

Sally Waldor

TITLE:

President

PRINT OR TYPE NAME:

Sally Waldor

ADDRESS:

9201 E Bloomington Fwy Suite Z

CITY, STATE:

Bloomington Minnesota

ZIP:

55420

TELEPHONE:

() 952-641-9004

FAX:

() 952-885-9173

EMAIL ADDRESS:

sallywaldor@wtrvalves.com

TOTAL PRICE OF ALL BID ITEMS: \$ 8,080.00

DATE: 4/14/2021

Page: 6

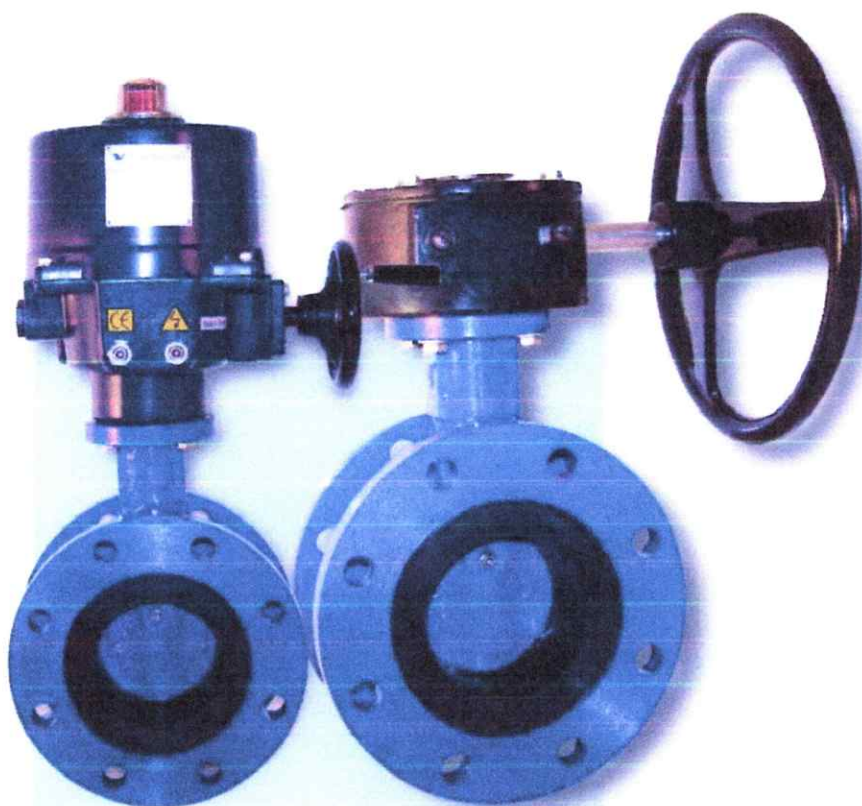
INVITATION TO BID FROM JEFFERSON PARISH - continued

BID NO.: 50-00134288

SEALED BID

ITEM NUMBER	QUANTITY	U/M	DESCRIPTION OF ARTICLES	UNIT PRICE QUOTED	TOTALS
1	1.00	EA	Purchase of butterfly valve and valve seat gates for the Jefferson Parish Eastbank Warehouse		
			0010 VALVE, BUTTERFLY, 8 IN, FLANGED, CLASS 150B, 2 IN OPER. NUT, EPOXY COATED STK. # 0623570 WTR Model BFVF8	\$1,680.00	\$1,680.00
2	10.00	EA	0020 VALVE, RESILIENT SEAT GATE, 8 IN, C515 DUCTILE IRON, MECH. JOINT, NRS, 2 IN OPER. NUT, EPOXY COATED, STAINLESS BOLTS & NUTS, DOMESTIC, NO ACCESSORIES M AND H #7571 STK.# 062408A WTR Model GVMJ8	\$640.00	\$6,400.00
			DELIVER TO: JEFFERSON PARISH EASTBANK WAREHOUSE 4901 JEFFERSON HIGHWAY JEFFERSON, LA 70121 MR. CURTIS MCFARLAND		

AWWA BUTTERFLY VALVES



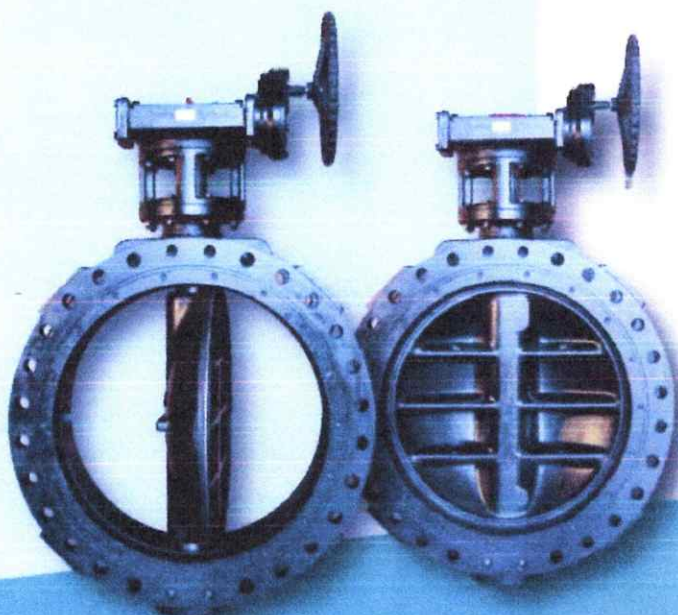
**RELIANT VF-504, 3"-24"
VULCANIZED SEAT DESIGN**

Page 01-09



**RELIANT VF504LD 30"-144"
REMOVABLE SEAT DESIGN**

Page 10-14



**VALUE VALVE VF-264 30"-104"
REMOVABLE SEAT DESIGN**

Page 15-24



**Water
Technology
Resources**

Suggested Specifications

Reliant VF-504, 3.0" thru 24.0"

General:

All butterfly valves shall be tight closing rubber seated design, conforming to the latest design standards of AWWA-C504, except as noted. Valves shall be bubble tight at rated pressure in either direction and shall be suitable for throttling service and operation after long periods of inactivity. Manufacturer shall have a minimum of 5 years experience producing AWWA butterfly valves.

Body:

All valve bodies shall be constructed of Cast Iron ASTM A126, Class B or Ductile Iron ASTM A536, grade 65-45-12 as specified. Flange drilling shall be per ANSI B16.1, Mechanical Joint ends shall conform to ANSI/AWWA C111/A21.11 standard. Specifier shall indicate end connections (i.e. Flanged or Mechanical Joint), and Pressure Class (i.e. 125# or 250#)

Disc:

Disc is Fusion Bonded with NSF-61 coating and shall be constructed of Ductile Iron ASTM A536, grade 65-45-12 with a 316SS disc edge.

Seat:

Seats shall be bonded and vulcanized to the body of the valve. All interior surfaces of the body shall be lined with specified rubber (i.e. EPDM, Nitrile).

Shaft:

Valves shall have one piece through shaft of ASTM A276, 304SS, and shall be fastened to disc utilizing a threaded disc pin with lock nut or taper pin of 316SS, providing a leak proof connection between the shaft and the disc.

Bearings:

All shaft bearings shall be self lubricating corrosion resistant sleeve type, designed for horizontal or vertical operation.

Packing:

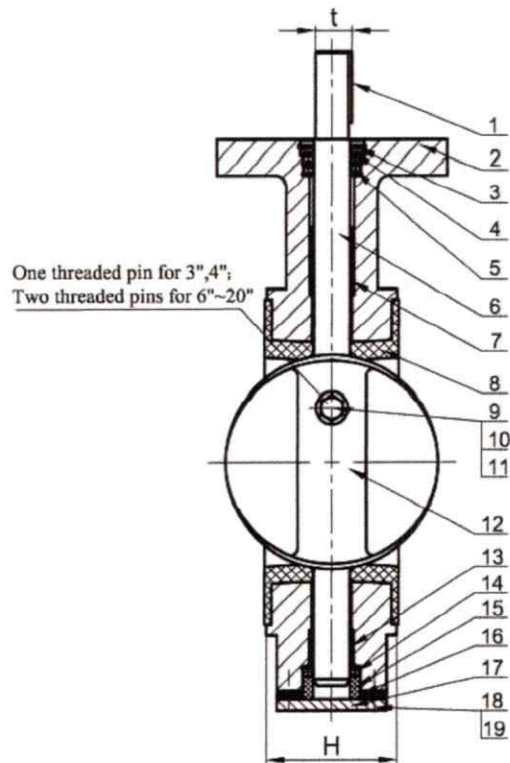
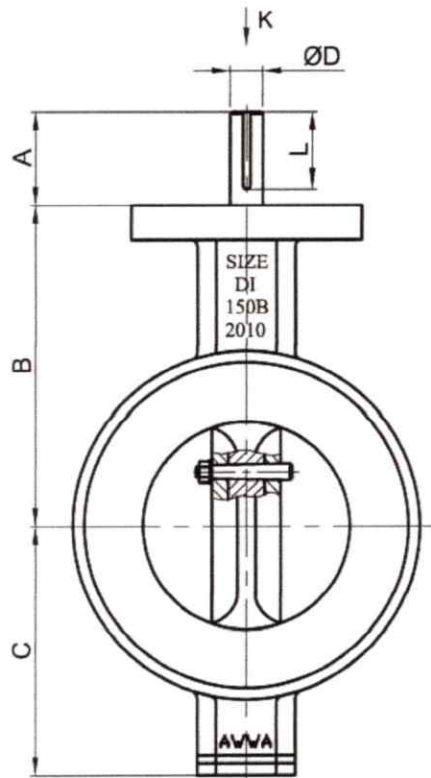
Packing design shall be U-cup with O-Rings.

Paint:

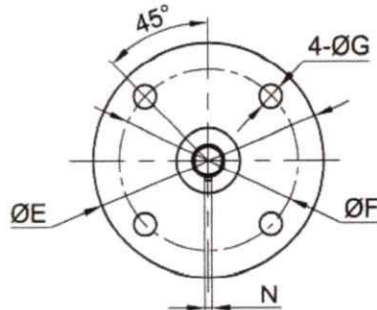
Valve bodies shall be coated with 2 -part epoxy polyurethane. Disc shall be coated with fusion bonded epoxy conforming to NSF-61 and AWWA 550.

Testing:

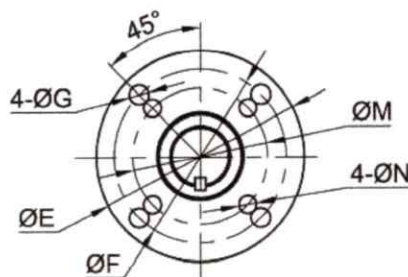
Valve shall be hydrostatic and leak tested in accordance with ANSI/AWWA 504 to 150 psig.



3", 4", 12"~20" K VIEW



6"~10" K VIEW



TECHNICAL REQUIREMENT:

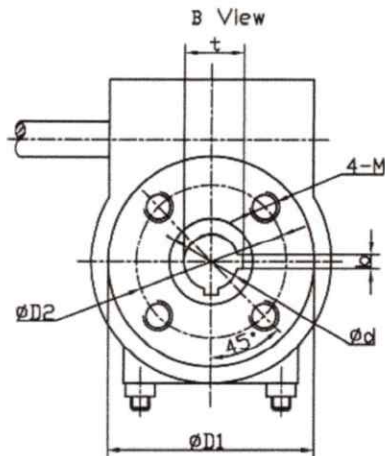
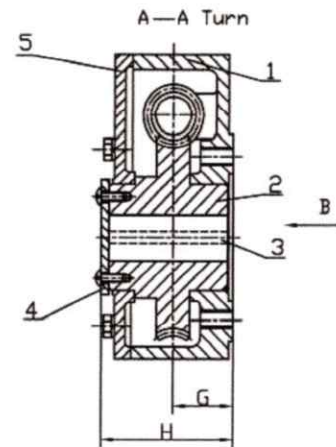
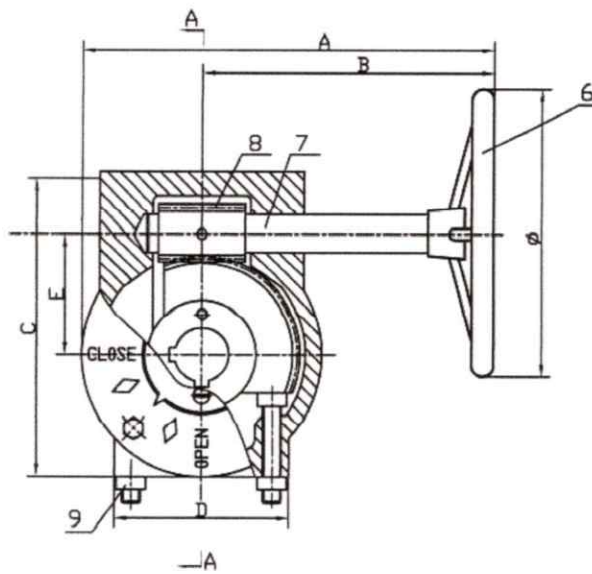
1. CONNECTION FLANGE: ASME B16.1 CLASS 125
2. FACE TO FACE: AWWA C504 WAFFER TYPE
3. TESTING STANDARD: AWWA C504
4. WORKING PRESSURE: 150PSI

■ Dimension in inches

SIZE	A	B	C	H	ØD	t	L	ØE	ØF	ØG	ØM	ØN	N	Torque N m
20"	3.50	15.98	15.16	5 1/8	2 1/4	2.426	3.46	7.99	6.50	1 1/16	—	—	1/2	2100
18"	3.50	14.37	13.78	4 5/8	2 1/4	2.425	3.46	7.99	6.50	1 1/16	—	—	1/2	1500
16"	2.99	13.46	13.19	4 1/8	1 3/4	2.052	2.95	7.99	6.50	1 1/16	—	—	3/8	1200
14"	2.83	11.81	11.30	3.79	1 5/8	1.778	2.76	5.98	4.95	3/16	—	—	3/16	820
12"	2.99	10.55	9.96	3 3/8	1 3/8	1.529	2.95	5.98	4.95	3/16	—	—	3/16	650
10"	2.99	8.96	9.17	3 1/8	1 3/8	1.529	2.95	5.98	4.95	3/16	4.02	3/8	3/16	300
8"	2.01	7.87	6.73	2 15/16	1 1/8	1.237	1.57	5.98	4.95	3/16	4.02	3/8	1/4	250
6"	1.57	6.50	5.55	2 3/16	1 1/8	1.236	1.57	5.98	4.95	3/16	4.02	3/8	1/4	100
4"	1.26	5.51	4.37	2 1/4	3/8	0.714	1.26	4.02	3.25	7/16	—	—	3/16	50
3"	1.26	4.72	3.60	2	3/16	0.651	1.26	4.02	3.25	7/16	—	—	3/16	20

No.	Name	Material
01	Key	ASTM 1045
02	Body	ASTM A536 65-45-12
03	Spring retaining ring	Carbon steel
04	Washer	SS
05	Sealing ring	Elastomer
06	Shaft	ASTM A276 304
07	Upper bushing	ASTM S304+PTFE
08	Seal	EPDM
09	Threaded pin	ASTM A276 304
10	Nut	SS304
11	Washer	SS304
12	Disc	ASTM A536 65-45-12+SS316
13	Lower bushing	ASTM S304+PTFE
14	Sealing ring	Elastomer
15	Gasket	Nylon
16	Bottom gasket	Elastomer
17	Bottom cover	ASTM A536 65-45-12
18	Bolt	SS304
19	Washer	SS304

Dimensions not for fabrication



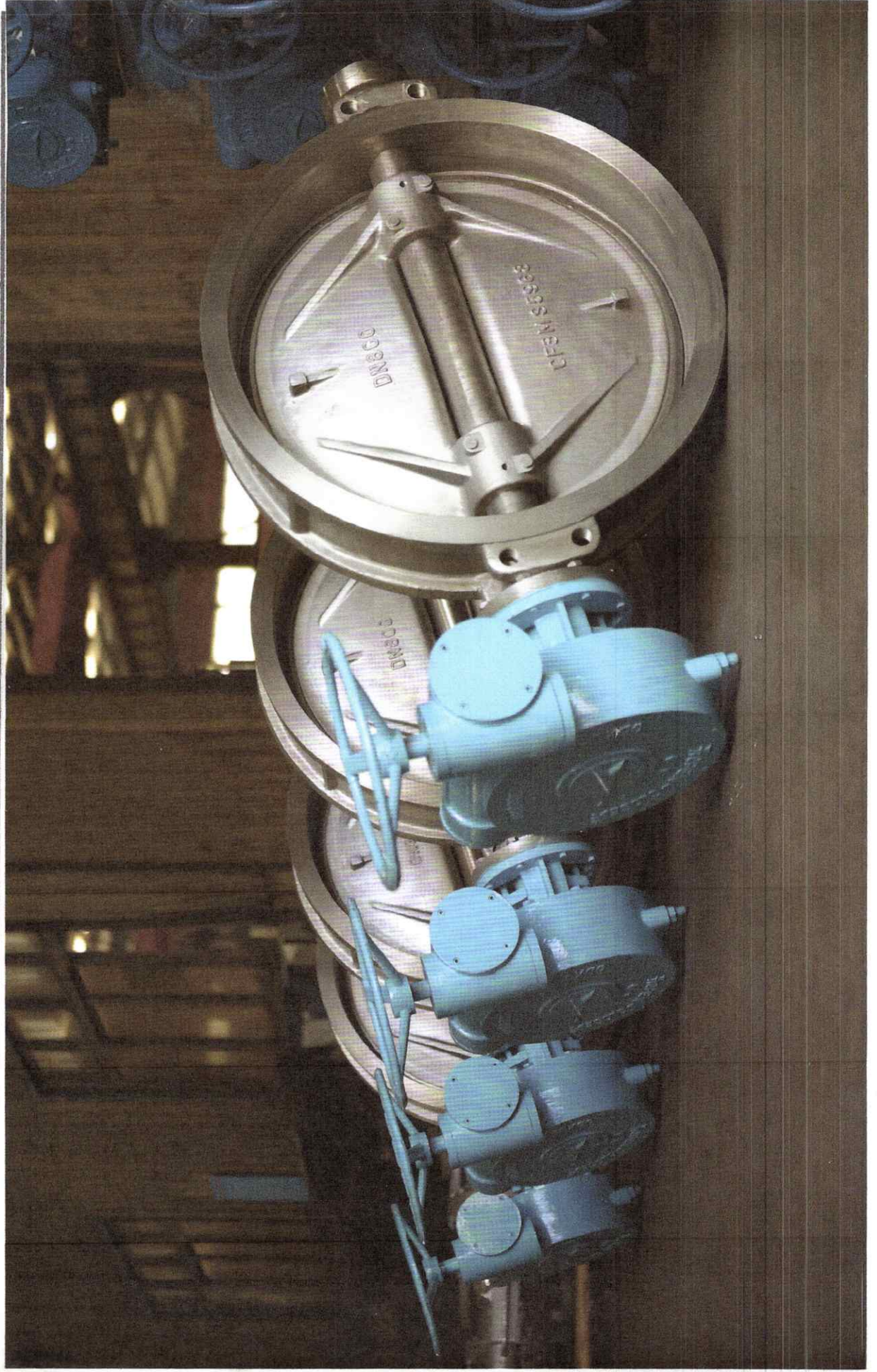
NO	Part	Material
1	Housing	DI
2	Worm Gear	Di/Bronze
3	Key	Carbon Steel
4	Indicator	Carbon Steel
5	Cover	DI
6	Handwheel	CI
7	Worm Shaft	Carbon Steel
8	Worm	Carbon Steel
9	Limit Bolt	Carbon Steel

RELIANT O3-GEAR BOX 3.0" - 14.0"

Size	Part Number	A	B	C	D	E	H	Φ	Φd
14	O3-AWWA-14	11.38	8.15	7.87	6.46	3.05	3.03	11.81	1.63
12	O3-AWWA-12	11.38	8.15	7.87	6.46	3.05	3.03	11.81	1.38
10	O3-AWWA-10	10.55	7.48	6.97	6.14	2.48	2.83	11.81	1.38
8	O3-AWWA-8	10.55	7.48	6.97	6.14	2.48	2.83	11.81	1.13
6	O3-AWWA-6	10.55	7.48	6.97	6.14	2.48	2.83	11.81	1.13
4	O3-AWWA-4	10.55	7.48	6.97	6.14	2.48	2.83	5.91	0.63
3	O3-AWWA-3	10.55	7.48	6.97	6.14	2.48	2.83	5.91	0.56

Size	b	t	Φ D2	Φ D1	4 x - M	G	L	Ratio	Max Output
14	0.31	1.78	5.00	5.00	1/2-13unc	1.69	0.43	60:1	8850.00
12	0.31	1.53	5.00	5.00	1/2-13unc	1.69	0.43	50:1	7080.00
10	0.31	1.53	5.00	5.00	1/2-13unc	1.69	0.43	30:1	4425.00
8	0.25	1.24	5.00	5.00	1/2-13unc	1.50	0.43	30:1	4425.00
6	0.25	1.24	5.00	5.00	1/2-13unc	1.50	0.41	30:1	4425.00
4	0.19	0.71	3.25	4.02	3/8-16unc	1.50	0.41	30:1	4425.00
3	0.19	0.65	3.25	4.02	3/8-16unc	0.04	0.41	30:1	4425.00

Water Technology Resources – WTR Valves



Butterfly Valves

Representative Installations

Partial List

- **LODI, California – Northern California Power Agency (2011)**

- **Large Bore Butterfly Valves – Water Intake**
 - (8) AWWA C504 – Class 150 B – Rubber Lined
 - (2) 24"
 - (4) 42"
 - (2) 54"
- **General Service**
 - (75) 3"-20" API 1609 – Triple Offset
 - Concentric Lug Type – CI 150
 - WCB Body/410 SS Disc
 - 17-4PH Shaft/PTFE

Note: In addition, for this project WTR furnished (575) High Pressure/High Temperature Gate/Globe/Check/Ball/Safety/Relief/and Control Valves.

- **Crosby, Minnesota – Water Treatment Facility (2012)**

- (37) C509 Butterfly Valves
 - 4"-12" – Class 150B

In addition, WTR provided (33) Plug, Check, Gate, and Air Vacuum Relief Valves.

- **Puerto Rico – Power Plant (2013)**

- (3) API Butterfly Valve – Hydraulic Actuator
 - 24"/48"

- **Tampico, Mexico – Water Distribution (2013)**

- (8) AWWA Butterfly Valves
 - 6"/10"/48"

- **Skillman, New York – Water Treatment Facility 2013**

- (12) AWWA C504 Butterfly Valves
 - 4"-14"

- **Dorad, Israel – Power Plant (2014)**
 - (40) AWWA C509 Butterfly Valves
 - Fully Rubber Lined (Salt Water)
 - Class 75A/150B
 - (7) 8"/12"/20" Electric Operated
 - (3) 16" Electric Operated
 - (4) 60" Electric Operated
 - (3) 24" Pneumatic Operated
 - (8) 18" Manually Operated
 - (7) 24" Manually Operated
 - (8) 54" Manually Operated

In addition, WTR provided (103) Motor Operated Valves – Butterfly, Ball, Globe, Gate, and Check Valves.

- **Canon City, Colorado – Water Treatment Plant (2015)**
 - (12) 14" AWWA C504 Butterfly Valves
 - Wafer
 - Ductile Iron
- **Desoto, Kansas – Water Filtration Plant (2015)**
 - (20) AWWA C504 Butterfly Valves – Electric Actuated
 - (8) 8"
 - (8) 10"
 - (4) 14"
- **Arnold Air Force Base, Tennessee (Deliver in 2016)**
 - (1) 144" Butterfly Valve – Electric Operated
 - (4) 24"/30" High Performance Butterfly Valves
 - All Stainless Steel
 - (1) Electric Operated
 - (3) Hydraulic Operated

In addition, WTR has provided numerous other High-Pressure Globe and Ball Valves.

- **Acorn, Arkansas – Water Treatment Plant**
 - Jack Tyler Engineering
 - (4) Wafer Butterfly Valves – Manual
 - (4) 6" Butterfly Valves – Electric Actuated

AWWA C504 Butterfly Valve

Installation List - Sample

We have included (4) Installation Lists of Butterfly Valves:

- Eudora, Kansas – Water Treatment Plant (2018)
 - (18) 6"/8"/12" w/Actuators
 - \$21,600

- Lodi, California (2010)
 - Power Plant
 - Worley Parsons – Consulting Engineer
 - (91) Butterfly Valves – 4"-24"
 - Plus (518) Gate, Globe, Check, Ball Valves and Instruments

- Arnold Air Force Base, Tennessee (2017-2018)
 - (4) 24"/30" Butterfly Valves
 - High Performance/High Pressure
 - (1) 144" Butterfly Valve

- Atchison, Kansas – Water Treatment Plant (2018)
 - (25) 10"-16" – Electric Actuated

- Crosby, Minnesota – Water Treatment Plant
 - (37) 4"-12" plus (38) Other Type Valves
 -

Arnold Air Force Base, TN

144” Butterfly Valve

Electric Actuated (2015)

Owner/Installation

AFTC/PZI (Arnold)
100 Kindel Drive – Suite A-3332
Arnold Air Force Base, Tennessee

Contact

Tyler McCamey

- Tyler.mccamey.1@us.af.mil
- 931-454-7365

Contract Price

\$620,449

Note #1

In addition to the 144” Butterfly Valve – Arnold has purchased 24” and 30” High Performance Butterfly Valves and (8) 6”/8” Class 2500 Ball Valves, High Performance Silencers, and (9) High Pressure Expansion Joints. Contracts Total Value - \$1,560,000

Note #2

Please refer to attached Performance Questionnaire submitted by Arnold AFB Management – Exceptional in (5) Categories.



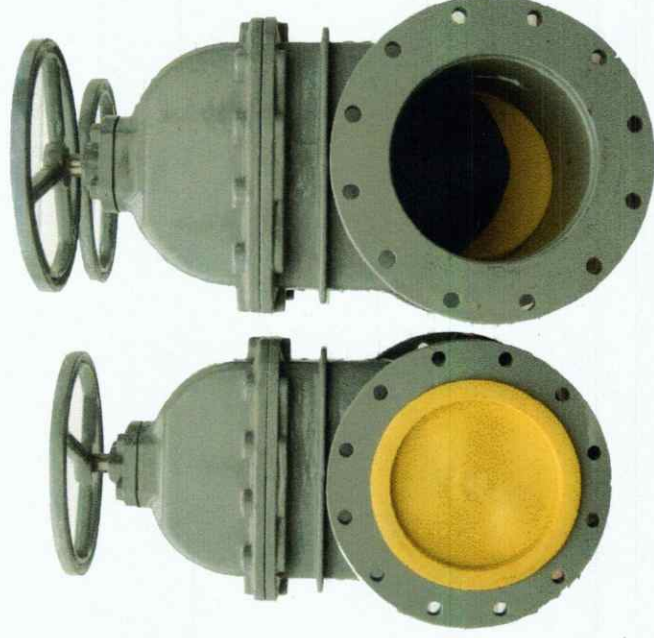
144" Butterfly Valve
Arnold Air Force Base - Tennessee

WTR Valves

GATE VALVES - AWWA C-509/C-515

Resilient Seating Rubber Wedge

Valves are manufactured in a size range from 2" - 48" with Flanged, Mechanical Joint, and Grooved design connections.



WTR Valves

Gate Valve Design Features

- AWWA C500 / C509 / C515
- 250 / 300 PSI Pressure Ratings
- Resilient Wedge
- Metal Seated Solid Wedge
- Seal in Either Direction
- Bubble Tight Seating
- Zero Leakage
- Integral Cast Lifting Lugs
- 2" Thru 48" Size Range
- Triple "O" Ring Sealing
- Rising or Non-Rising Stems
- Smooth Unobstructed Waterway - 100% Full Port

WTR Valves

Gate Valve Options

- Flange x Flange
- Flange x MJ
- MJ x MJ
- Push On
- Higher Pressure Ratings
- Bronze Seat Rings
- Bronze Stems
- By Pass Valve
- Double Disc Parallel Seat Design
- Rollers, Tracks and Scrapers

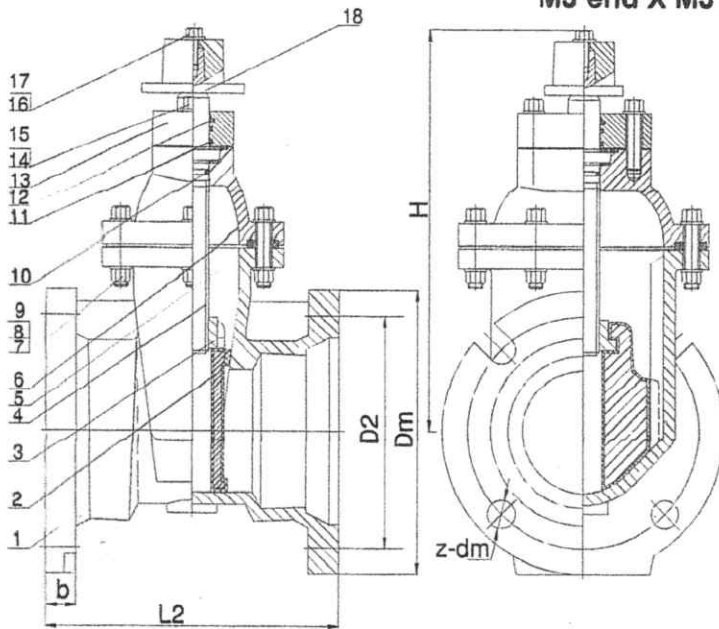
WTR Valves

Gate Valve Materials

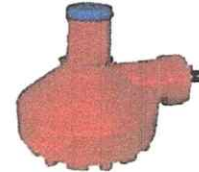
- Ductile Iron Body / Bonnet
- Stainless Steel Stems
- Brass Collars / Nuts
- Ductile Iron - Wedge, EPDM Rubber Encapsulated, permanently Bonded - ASTM D 429
- Fusion Bonded Epoxy Protective Coating - Interior & Exterior - AWWA C550 & NSF61

AWWA C509/C515 Resilient Seated Gate Valves

MJ end X MJ end



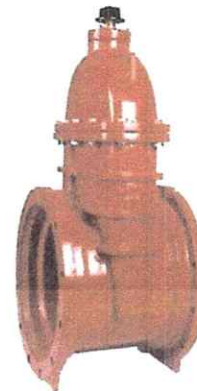
Operated by
Spur gearbox



Bevel gearbox



Handwheel



Nut

Valve parts name and material

No.	Part name	Material	Grade
1	Body	Ductile iron	ASTM A536 65-45-12
2	Wedge	Ductile iron/EPDM	65-45-12/ASTM D2000
3	Stem nut	Copper	ASTM B16
4	Stem	Bronze	C86700
5	Gasket	EPDM	ASTM D2000
6	Bonnet	Ductile iron	ASTM A536 65-45-12
7	Bolts	Stainless steel	SS304
8	Nuts	Stainless steel	SS304
9	Washers	Stainless steel	SS304
10	O ring	EPDM	ASTM D2000
11	Oring	EPDM	ASTM D2000
12	Dust ring	NBR	ASTM D2000
13	Gland	Ductile iron	ASTM A536 65-45-12
14	Washers	Stainless steel	SS304
15	Bolts	Stainless steel	SS304
16	Bolts	Stainless steel	SS304
17	Washers	Stainless steel	SS304
18	Nut	Ductile iron	ASTM A536 65-45-12

Design

1	Design	AWWA C509/C515
2	Class	125 PSI / 250 PSI
3	Face to face	ASME/ANSI B16.10
4	Flange end	ANSI/AWWA C111/A21.11
5	Testing	AWWA C509/C515
6	Coating	AWWA C550, NSF-61

Dimension

Unit in inch

Size	L2	H	ΦDm	ΦD2	b	z-Φdm	Weight (Lbs)	Design
2"	8.25	10.4	6.13	4.8	0.88	2-0.75	33	AWWA C515/C509
2 1/2"	8.25	11.4	6.75	5.4	0.88	2-0.75	40	AWWA C515/C509
3"	8.5	12.5	7.68	6.19	0.94	4-0.75	46	AWWA C515/C509
4"	9.5	13.9	9.12	7.5	1	4-0.75	66	AWWA C515/C509
6"	10	17.5	11.12	9.5	1.06	6-0.88	106	AWWA C515/C509
8"	10.5	21.1	13.37	11.75	1.12	6-0.88	185	AWWA C515/C509
10"	12	24.3	15.69	14	1.19	8-0.88	260	AWWA C515/C509
12"	13	27.4	17.94	16.25	1.25	8-0.88	364	AWWA C515/C509
14"	14	30.7	20.31	18.75	1.31	10-0.88	507	AWWA C515/C509
16"	18	33.7	22.56	21	1.38	12-0.88	705	AWWA C515/C509
18"	19.25	36.7	24.83	23.25	1.44	12-0.88	970	AWWA C515/C509
20"	20	39.8	27.08	25.5	1.5	14-0.88	1124	AWWA C515/C509
24"	22	45.9	31.58	30	1.62	16-0.88	1585	AWWA C515/C509
30"	24	66.5	39.12	36.88	1.81	20-1.13	2973	AWWA C515/C509
36"	28	74.0	46	43.75	2	24-1.13	4405	AWWA C515/C509
42"	36	80.7	53.12	50.62	2	28-1.38	7930	AWWA C515/C509
48"	43	92	60	57.5	2	32-1.38	11440	AWWA C515/C509

Resilient Seated Gate Valves (AWWA C509 and/or AWWA C515)

1. 2 Digit Size 02-72
2. Connection
 - F-Flanged CL125
 - 2-Flanged CL250
 - M-Mechanical Joint
 - Z-Flanged by MJ
3. Configuration
 - N-NRS
 - O-OSY
4. Body Material
 - C-Cast Iron
 - D-Ductile Iron
5. Gate Material
 - S-Stainless 304
 - 3-Stainless 316
 - D-Ductile Iron
 - C-Cast Iron
6. Shaft Material
 - S-Stainless 304
 - B-Bronze
 - 3-Stainless 316
 - 4-Stainless 416
 - 6-Stainless 17-4PH
 - 2-Super Duplex 2507 with Naval brass stem nut
7. Encapsulation Material
 - E-EPDM
 - N-NBR
 - V-Viton
8. Bearing Material
 - P-PTFE
 - B-Bronze
 - S-Stainless 304
9. Hardware Material
 - S-Stainless 304
 - 3-Stainless 316
 - Z-Zinc Plated
10. Coatings
 - 1-FBE
 - 2-Tnemec N140
11. Gearbox
 - M-Stem Mounted (standard on 2"-14")
 - S-Spur Gear (standard on 16" and up)
 - B-Bevel Gear
12. Operator
 - H-Handwheel (Standard on Flanged Valves)
 - N-2" Nut (Standard on MJ and FLxMJ Valves)
 - C-Chainwheel



Water Technology Resources
9201 E Bloomington FWY Suite Z
Bloomington, MN 55420
P: 952-641-9004 F: 952-885-9173

City of Chicago

Gate Valve Contracts

In 2014, WTR was awarded a five (5) year contract to furnish AWWA C509/C515 Resilient Wedge MJ Gate Valves, sizes 4"-24". Contract Value \$1,236,000.

As of 2019, WTR has furnished over (2300) valves – manufactured specifically to the City of Chicago specifications.

Based on the past five (5) years of working very closely with the City, supplying high quality Gate Valves, and meeting requirements of the Contract, the City awarded WTR another Contract (2020-2021) for an additional quantity of (2810) Valves with a Contract Value of \$1,960,610.



CERTIFICATE OF LIABILITY INSURANCE

DATE (MM/DD/YYYY)

07/15/2020

THIS CERTIFICATE IS ISSUED AS A MATTER OF INFORMATION ONLY AND CONFERS NO RIGHTS UPON THE CERTIFICATE HOLDER. THIS CERTIFICATE DOES NOT AFFIRMATIVELY OR NEGATIVELY AMEND, EXTEND OR ALTER THE COVERAGE AFFORDED BY THE POLICIES BELOW. THIS CERTIFICATE OF INSURANCE DOES NOT CONSTITUTE A CONTRACT BETWEEN THE ISSUING INSURER(S), AUTHORIZED REPRESENTATIVE OR PRODUCER, AND THE CERTIFICATE HOLDER.

IMPORTANT: If the certificate holder is an **ADDITIONAL INSURED**, the policy(ies) must have **ADDITIONAL INSURED** provisions or be endorsed. If **SUBROGATION IS WAIVED**, subject to the terms and conditions of the policy, certain policies may require an endorsement. A statement on this certificate does not confer rights to the certificate holder in lieu of such endorsement(s).

PRODUCER	CONTACT NAME: Shannon Milan	FAX (A/C, No): (651) 379-7801	
	PHONE (A/C, No, Ext): (651) 379-7800	E-MAIL ADDRESS: shannon.milan@northriskpartners.com	
INSURED	INSURER(S) AFFORDING COVERAGE		NAIC #
	INSURER A: Regent Insurance Company		24449
	INSURER B: General Casualty of Wisconsin		24414
	INSURER C:		
	INSURER D:		
	INSURER E:		
INSURER F:			

Water Technology Resources.
9201 E Bloomington Freeway, Ste Z
Bloomington MN 55420

COVERAGES

CERTIFICATE NUMBER: 20/21 Liability

REVISION NUMBER:

THIS IS TO CERTIFY THAT THE POLICIES OF INSURANCE LISTED BELOW HAVE BEEN ISSUED TO THE INSURED NAMED ABOVE FOR THE POLICY PERIOD INDICATED. NOTWITHSTANDING ANY REQUIREMENT, TERM OR CONDITION OF ANY CONTRACT OR OTHER DOCUMENT WITH RESPECT TO WHICH THIS CERTIFICATE MAY BE ISSUED OR MAY PERTAIN, THE INSURANCE AFFORDED BY THE POLICIES DESCRIBED HEREIN IS SUBJECT TO ALL THE TERMS, EXCLUSIONS AND CONDITIONS OF SUCH POLICIES. LIMITS SHOWN MAY HAVE BEEN REDUCED BY PAID CLAIMS.

INSR LTR	TYPE OF INSURANCE	ADDL INSD	SUBR WVD	POLICY NUMBER	POLICY EFF (MM/DD/YYYY)	POLICY EXP (MM/DD/YYYY)	LIMITS	
A	<input checked="" type="checkbox"/> COMMERCIAL GENERAL LIABILITY			BPK0005556-01	08/01/2020	08/01/2021	EACH OCCURRENCE	\$ 2,000,000
	<input type="checkbox"/> CLAIMS-MADE <input checked="" type="checkbox"/> OCCUR						DAMAGE TO RENTED PREMISES (Ea occurrence)	\$ 100,000
							MED EXP (Any one person)	\$ 5,000
							PERSONAL & ADV INJURY	\$ 2,000,000
	GEN'L AGGREGATE LIMIT APPLIES PER:						GENERAL AGGREGATE	\$ 2,000,000
	<input type="checkbox"/> POLICY <input type="checkbox"/> PRO-JECT <input type="checkbox"/> LOC						PRODUCTS - COMP/OP AGG	\$ 2,000,000
	OTHER:							\$
A	AUTOMOBILE LIABILITY			BCA0003260-00	08/01/2020	08/01/2021	COMBINED SINGLE LIMIT (Ea accident)	\$ 1,000,000
	<input type="checkbox"/> ANY AUTO						BODILY INJURY (Per person)	\$
	<input type="checkbox"/> OWNED AUTOS ONLY <input checked="" type="checkbox"/> SCHEDULED AUTOS NON-OWNED AUTOS ONLY						BODILY INJURY (Per accident)	\$
	<input checked="" type="checkbox"/> HIRED AUTOS ONLY						PROPERTY DAMAGE (Per accident)	\$
								\$
A	<input checked="" type="checkbox"/> UMBRELLA LIAB			BUM0006931-00	08/01/2020	08/01/2021	EACH OCCURRENCE	\$ 4,000,000
	<input type="checkbox"/> EXCESS LIAB	<input checked="" type="checkbox"/> CLAIMS-MADE					AGGREGATE	\$ 4,000,000
	DED <input checked="" type="checkbox"/> RETENTION \$ 10,000							\$
B	WORKERS COMPENSATION AND EMPLOYERS' LIABILITY			BWC0002698-01	08/01/2020	08/01/2021	<input checked="" type="checkbox"/> PER STATUTE <input type="checkbox"/> OTH-ER	
	ANY PROPRIETOR/PARTNER/EXECUTIVE OFFICER/MEMBER EXCLUDED? (Mandatory in NH)	Y / N <input type="checkbox"/> N <input checked="" type="checkbox"/>	N / A				E.L. EACH ACCIDENT	\$ 1,000,000
	If yes, describe under DESCRIPTION OF OPERATIONS below						E.L. DISEASE - EA EMPLOYEE	\$ 1,000,000
							E.L. DISEASE - POLICY LIMIT	\$ 1,000,000

DESCRIPTION OF OPERATIONS / LOCATIONS / VEHICLES (ACORD 101, Additional Remarks Schedule, may be attached if more space is required)

G&I IX Minneapolis Industrial JV LLC, G&I IX Bloomington LLC, CP4 Portfolio, LLC, Capital Partners Management LLC, and its subsidiaries, affiliates, parent companies and their respective members, officers, directors, Contractors, employees, agents, shareholders, successors and assigns, heirs, administrators, and personal representatives are Additional Insureds under the Commercial General Liability when required by written contract.

CERTIFICATE HOLDER

CANCELLATION

SHOULD ANY OF THE ABOVE DESCRIBED POLICIES BE CANCELLED BEFORE THE EXPIRATION DATE THEREOF, NOTICE WILL BE DELIVERED IN ACCORDANCE WITH THE POLICY PROVISIONS.

AUTHORIZED REPRESENTATIVE

© 1988-2015 ACORD CORPORATION. All rights reserved.