

**GreenCheck™ BOTTLE (Bottle Only)****Improves Safety**

Pre-printed, bilingual (English/Spanish) content check boxes significantly improve identification

**Saves Time**

Always have the correct bottle available - one bottle, multiple applications

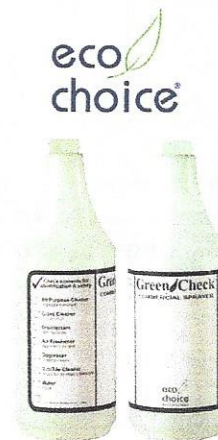
**Saves Money**

Embossed scale encourages user to properly proportion chemicals

**Durable**

Bottles are imprinted with ultraviolet ink for superior chemical resistance and a bright, glossy finish

Product #	Volume		Material	Color	Thread Finish	Case Pack
	oz	mL				
130153	32	1000	HDPE	Translucent Green Bottle with Dark Green/White Imprint	28/400	80



EcoChoice® products are not available for sale to the state of California

Contact a Customer Service representative for alternate products if you live in California

**TOLCO ROUND BOTTLES****Saves Money**

Embossed scale encourages user to properly proportion chemicals

**Comfort Design**

Tapered neck provides a more comfortable grip when used with a trigger sprayer

Product #	Volume		Material	Color	Thread Finish	Case Pack
	oz	mL				
120106	8	237	HDPE	Natural	28/400	200
120119	24	710	HDPE	Natural with Embossed Scale	28/400	200
120125	32	1000	HDPE	Natural with Embossed Scale	28/400	100

**MEGA ROUND BOTTLES****Saves Time**

Large 36 oz. capacity requires fewer refills

**Saves Money**

Dilution scale encourages user to properly proportion chemicals

Product #	Volume		Material	Color	Thread Finish	Case Pack
	oz	mL				
120156	36	1065	PET	Clear without Scale	28/400	50
120157	36	1065	PET	Clear with Printed Scale	28/400	50
120142	36	1065	HDPE	Natural with Embossed Scale	28/400	90





# SPONGE PADS

## Commercial Cellulose Sponges



Cellulose sponges are made of durable, high quality cellulose. These sponges will hold many times their own weight in liquids, which gives you maximum absorbency for spills or carrying cleaning solutions. Sponges are available in three convenient sizes for any application.

## Scrub Sponges



### #631 Blue Scrub Sponge

The ultimate in scrub sponges. The combination of a durable, cellulose sponge and a scratch resistant scrubbing surface that is aggressive enough for heavy cleaning jobs, yet safe on non-stick, coated cookware, painted surfaces, porcelain, chrome as well as stainless steel.

## Non-Woven Sponges



### #63/875 Clean 'N Sponge Light Duty

Cellulose sponge carries water or cleaning solution to the job and later wipes up residue. Excellent for cleaning vitreous china sinks, tubs, toilets, ceramic, plastic and rubber, tile countertops, desks, screens, etc. Non-woven material has gentle cleaning action.



### #74/893 Scour 'N Sponge General Purpose

Cellulose sponge carries water or detergent to the job surface. Extra strong non-woven material scours, scrubs and cleans the area. Sponge carries residue away. Excellent for cleaning stoves, counters, cooking utensils, ceilings and walls.

## COMMERCIAL CELLULOSE SPONGES

PART NUMBER	SIZE	PADS/CASE
66261014640	6" x 3 1/2" x 1"	24
66261014641	6" x 3 1/2" x 1"	48
66261014643	6" x 4 1/4" x 1 1/2"	24
66261014642	6" x 4 1/4" x 1 1/2"	48
66261014644	7" x 4 1/4" x 2"	24
66261014645	7" x 4 1/4" x 2"	48

## BLUE SCRUB SPONGE

PART NUMBER	SIZE	PADS/CASE
66261014646	6" x 3" x 1"	48

## NON-WOVEN SPONGE PADS

PART NUMBER	COLOR	PADS/CASE
<b>CLEAN 'N SPONGE LIGHT DUTY</b>		
<b>3-1/4" x 6-1/4" x 1"</b>		
66261059402	White	40 (4 Boxes of 10)
<b>SCOUR 'N SPONGE GENERAL PURPOSE</b>		
66261059403	Green	40 (4 Boxes of 10)

new!

# SCRUBBING PADS

## Pot & Pan Scrubber / Fine Cleaning Pad



The pot and pan scrubber utilizes heavy fibers and an open weave to help create an aggressive pad for cleaning stubborn baked-on messes. The thick, non-abrasive, fine cleaning pad is designed for gentle cleaning of delicate surfaces.

## Easy Cleaner Sponge



Plastic coated sponge with mildly aggressive scrubbing action for cleaning nonstick pans and kitchen appliances.

## Stainless Steel Scrubber



A #300 series scrubber of the longest lasting stainless steel that will not rust or splinter.

## Grill/Griddle Screen and Holder



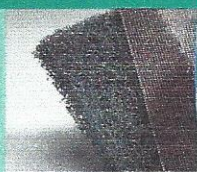
Open mesh screen for use during heavy-duty cleaning of burnt on grease and food build-up. The heat resistant holder is designed specifically for use with the griddle screen and polishing pad.

## Plastic Mesh Scrubber



Manufactured with non-abrasive, mesh plastic in a comfortable hand size shape for cleaning nonstick pots and pans.

## Grill/Griddle Polishing Pad



Used in conjunction with the griddle screen and plastic holder for added life to the screen. Polishes grills when used without griddle screen.

PART NUMBER	SIZE	PADS/CASE
<b>881 HEAVY DUTY POT &amp; PAN SCRUBBER</b>		
66261055388	3-1/2" x 5"	40
<b>9031 FINE WHITE CLEANING PAD</b>		
66261015846	3-1/2" x 5"	40
<b>SS50G STAINLESS STEEL SCRUBBER</b>		
66261016505	3" Diameter	72
<b>PS3 PLASTIC MESH SCRUBBER</b>		
66261017181	3" Diameter	24
<b>341 EASY CLEANER SPONGE</b>		
66261017182	3" x 4-3/4"	24

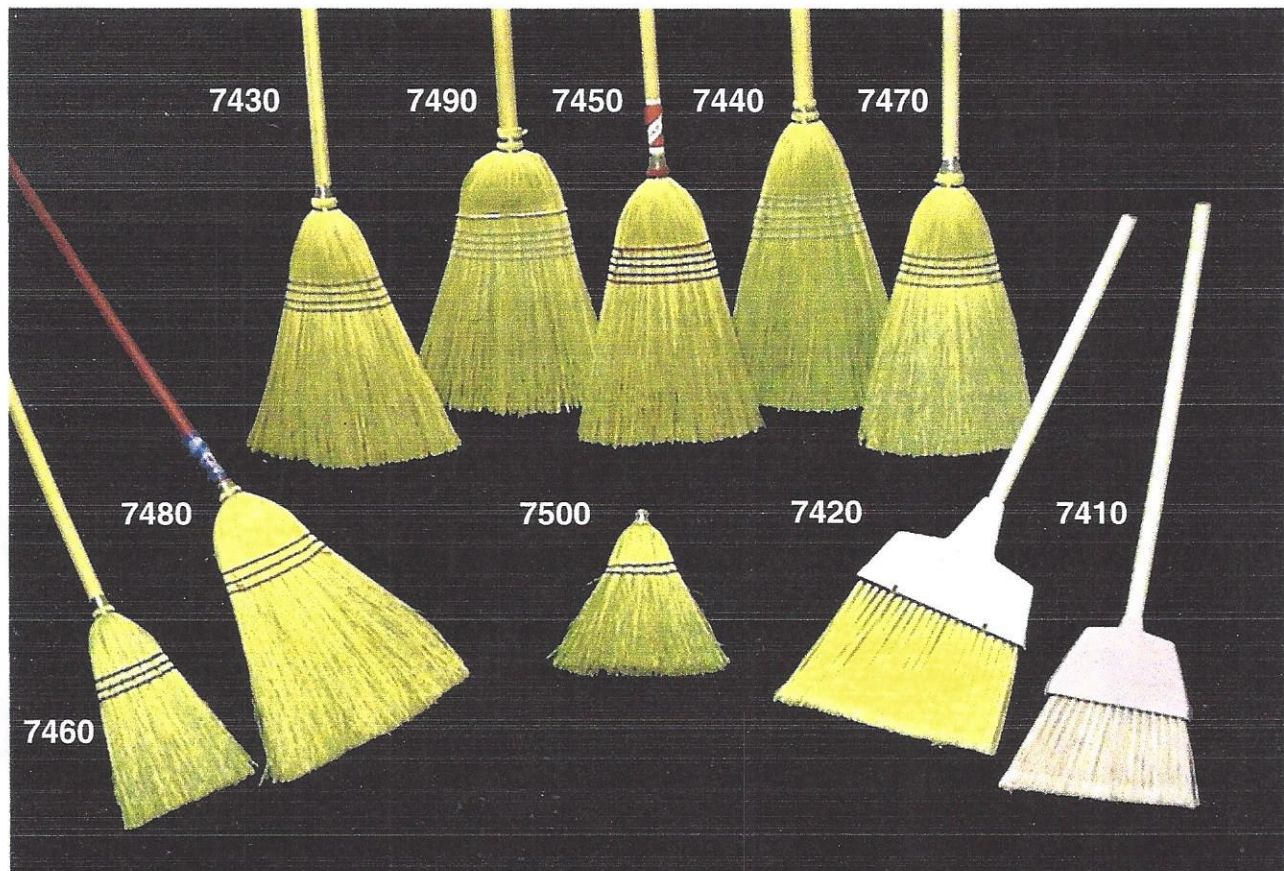
PART NUMBER	SIZE	PADS/CASE
<b>GRILL/GRIDDLE SCREEN</b>		
07660703201	4" x 5-1/2"	100
<b>GRILL/GRIDDLE SCREEN HOLDER</b>		
66261047583	3-1/4" x 5-1/2"	10
<b>464 GRILL/GRIDDLE POLISHING PAD</b>		
66261016497	4" x 5-1/4"	40



# Brooms

DESCRIPTION	Type	Stock No.	Lbs./Dz.
4 Sew with Band, Corn/Sotol, 1 1/8" Lacquer Handle	Warehouse	7490	32 lbs.
5 Sew, Corn/Sotol, 1 1/8" Lacquer Handle	Janitor	7440	30 lbs.
4 Sew, Corn/Sotol, Lacquer Handle	Mill	7470	21 lbs.
5 Sew, with Cloth, Corn/Sotol, Lacquer Handle	Little Jewell	7450	21 lbs.
4 Sew Fan Type, Corn/Sotol, Lacquer Handle	Clean Sweep	7430	22 lbs.
3 Sew, Corn/Sotol, Red Handle	Red Bird	7480	17 lbs.
3 Sew, Corn/Sotol, 30" Handle	Lobby	7460	8 lbs.
2 Sew, 8" Sweep, Corn/Sotol	Whisk	7500	5 lbs.
Plastic Bristle	Angle, Small	7410	12 lbs.
Plastic Bristle	Angle, Large	7420	16 lbs.

Brooms can be made to your specifications. Call for a quote.  
 Bundled per dozen in broom bags to protect brooms during shipping.  
 Cartons are also available.



**Carolina Mop Manufacturing Co.**



## Janitorial Tools

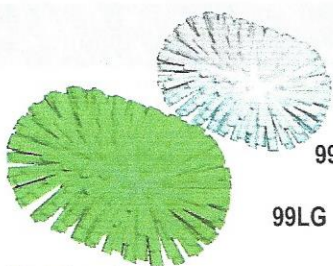
2635Y



### Mop Bucket & Wringer Combo Pack

The HDPE mop bucket and wringer combo makes mopping easy. 3" non-marking casters and durable HDPE construction. Red "Caution Wet Floor" symbol is molded into bucket wall.

2635Y - 35 Quart Mop & Bucket Combo.  
1 Pack per cs. 10 lbs. Sold in Pack only.



99S

99LG

### Tank Brushes

Soft Green and Stiff White Poly bristles are mounted on a cylindrical center drilled for a threaded handle. Use with a fiberglass handle on page 17.

99S - White polyester bristle tank brush.  
4-1/2" diameter x 8.5" wide. 12/cs. 8 lbs.

99LG - Green nylon bristle tank brush.  
5-1/2" diameter x 9" wide. 12/cs. 15 lbs.



27

27P

27T

27E

27E-WC

### Toilet Bowl Brush

Plastic bristles rinse clean. Lacquered wood handle is stronger and longer than plastic.

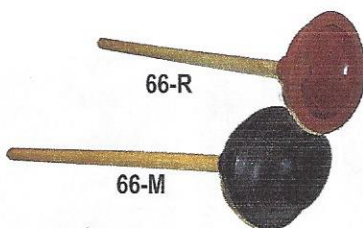
27 - Toilet Bowl Brush - 4" plastic bristle head, 10" plastic handle. 12/cs. 6 lbs.

27P - Toilet Bowl Brush - 4" plastic bristle head, 12" wood handle. 12/cs. 10 lbs.

27T - Toilet Bowl Brush - 4" tampico bristle head, 10" wood handle. 12/cs. 6 lbs.

27E - Toilet Bowl Brush - Crimped poly bristle, 10" plastic handle. 48/cs. 6 lbs.

27E-WC - Toilet Bowl Brush with Cup - Crimped poly bristle, 10" plastic handle. 4" tall cup. 12/cs. 6 lbs.



66-R

66-M

### Bowl Plungers

Smooth, lacquered wood handle mounts into a soft rubber plunger head. Makes a tough job easier.

Select the standard head (red) with flat face or a master plunger (black) with force cup for more pressure.

66-M - Master black plunger with force cup and handle. 12/cs. 12 lbs.

66-R Standard red plunger with handle. 12/cs. 9 lbs.



65-3

65-A

65-7

65-6

### Dust Pans

Easy sweepings. Stamped metal pans are coated for corrosion resistance and reinforced for extra strength.

Plastic pans resist chemicals. Lightweight and easily washed.

65-A - HD aluminum dust pan. 16" wide. 12/cs. 15 lbs.

65-3 - HD plastic dust pan. 12" wide. 12/cs. 9 lbs.

65-6 - HD metal dust pan, black enamel. 12" wide. 12/cs. 15 lbs.

65-7 - HD metal dust pan, black enamel. 16" wide. 12/cs. 27 lbs.

### Toilet Bowl Mop

27MOP - 4-1/2" mop head with acid-resistant poly strands. 12" plastic handle. 100/cs. 10 lbs.

27MOP

### Lobby Dust Pan

Rugged, molded, plastic base with built-in feet. A strong, fiberglass handle swings freely or locks into upright position for easy handling HDPE yoke. 36" tall. 12" wide.

67 - 12" Lobby Dust Pan with fiberglass handle, gray. 12/cs. 12 lbs.

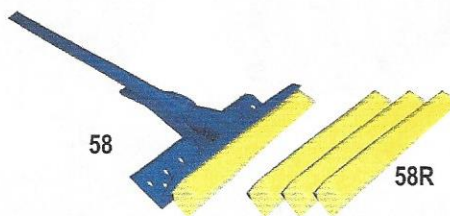


72L

### Metal Chip Wire Brush

Great for removing loose metal scraps and rust from tight spaces.

72L - 2" trim tempered-steel bristle. 3 x 5 row bristle pattern. Coated steel wire handle. 12/cs. 2 lbs.



58

58R

### Sponge Mop

Heavy-duty 9" wide sponge with plastic frame and built-in squeeze handle.

58 - 9" wide soft cellulose sponge mop with 48" lightweight metal handle squeegee. 12/cs. 16 lbs.

58R - Cellulose Sponge refill for #58 Sponge mop. 12/cs. 2 lbs.



42

### Grout Brush

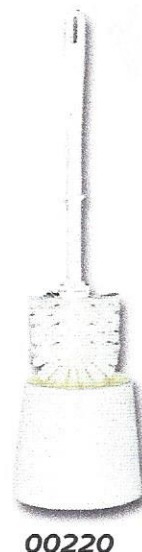
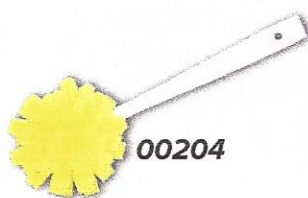
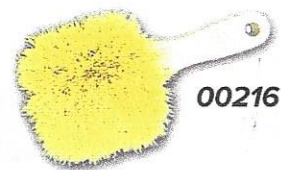
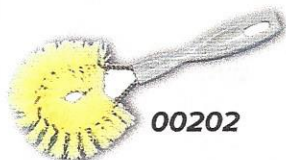
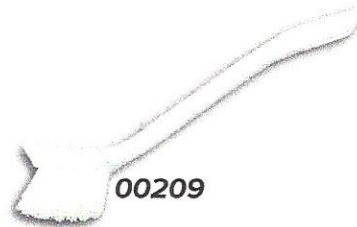
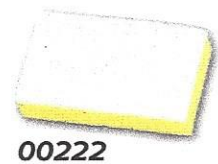
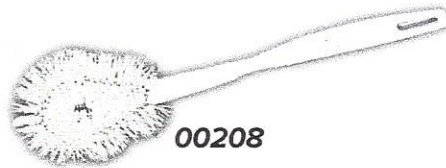
Thick durable black nylon bristles clean hard-to-reach grout on tile and hard to reach areas. 7/8" bristle trim length. 8-1/8" long plastic handle.

42 - Grout brush. 12/cs. 3 lbs.



## Household Brushes

Item/Description	UPC
Bottle Brush	00201
Vegetable Brush	00202
Iron Handle Scrub Brush	00203
Kitchen Helper Puff	00204
21" Magnetic Feather Duster (Anti-Static)	00205
Bowl Scrub	00206
Handle Scrub Pad (Heavy Duty)	00207
Wire Wound Bowl Brush w/Plastic Handle	00208
Dish and Sink Brush	00209
Handle Scrub Pad (Fine)	00210
Hand and Nail Brush	00211
Grout Brush	00212
All Purpose Gong Brush (9" Handle)	00216
Continental Bowl Brush and Holder	00220
Sponge Scrubber	00222
Continental Bowl Brush	00225
Liquid Soap Dispenser	00288





## Industrial Items

### Item/Description

### UPC

Multi-Surface Scrub with Side Bristles	00238
Wet Floor Caution Sign (Bilingual)	00244
Slicer Brush	00248
10" Hi-Lo Scrub Brush	00250
20" Long Gong with Red Poly Fill	00253
20" Long Handle Gong w/Palmyra Fill	00266
20" Long Handle Gong w/Poly Fill	00267
8 1/2" Short Gong w/Palmyra Fill	00268
10" Deck Scrub, Foam block, 2" Poly	00272
10" Deck Scrub, Foam block, 2" Palmyra	00273
35 Qt. Bucket w/Side-Press Wringer	00274
35 Qt. Bucket w/Down-Press Wringer	00276
Side-Press Wringer	00277
3" Drain Brush with 30" Handle	00278
Down-Press Wringer	00279
20" Long Handle Gong w/Nylon Fill	00280
Black Fryer Brush	00282
White Fryer Brush	00283
10" Hi-Lo Floor Scrub, Deluxe	00284
10" Hi-Lo Floor Scrub, Deluxe with Squeegee Edge	01284
Aluminum Dust Pan	00707
Janitor Cart	00704
Broom Hanger, 5-position	00720

00279

00277

00704

00720

01284

00276

00238

00274

00248

00280

00273

00250

00284

00244

00253

00272

00267

00268

00707

00282

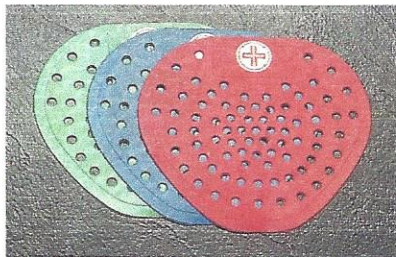
00283



## HEALTH GARDS® DELUXE VINYL DEODORIZING URINAL SCREENS

Choose from 3 fragrances: Mint, Apple and Cherry

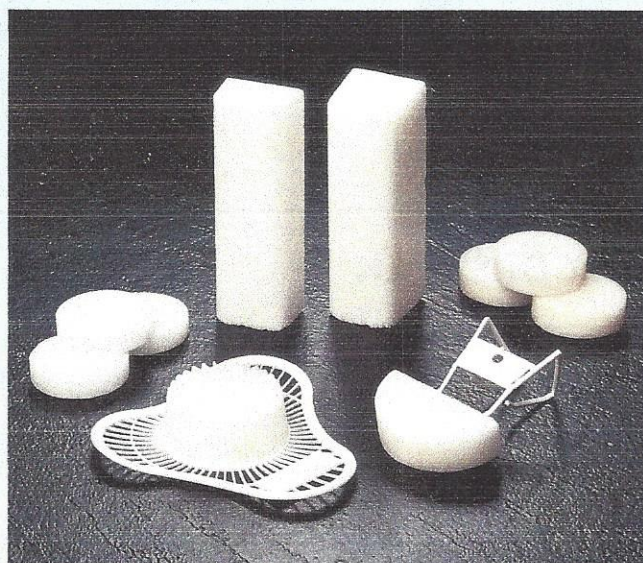
- Odor control lasts at least 30 days
- Helps to eliminate odors while preventing clogging
- Flexible to fit all urinals
- Individually packaged: 12 per carton



### ORDERING INFORMATION

PRODUCT CODE	FRAGRANCE	PACKED/CASE
<b>URINAL SCREENS WITH NON-PARA BLOCK</b>		
01901	Cherry	12
01902	Apple	12
01904	Mint	12
01905	Citrus	12
01906	Cinnamon	12
<b>TOILET RIM CAGES</b>		
02901	Cherry	12
02902	Apple	12
02904	Mint	12
02905	Citrus	12
<b>VINYL URINAL SCREENS</b>		
03901	Cherry	12
03902	Apple	12
03904	Mint	12
<b>NON-PARA TOSS-IN BLOCKS</b>		
04901	Cherry	72
04905	Citrus	72
<b>STICK UP DEODORANT DISCS</b>		
05902	Apple	12
05905	Citrus	12
<b>4 oz. PARA TOSS-IN BLOCKS</b>		
06411 (corrugated shipper)	Cherry	144
06901 (chipboard sleeve)	Cherry	144
06401 (bulk)	Cherry	144
<b>3 oz. PARA TOSS-IN BLOCKS</b>		
06311 (corrugated shipper)	Cherry	144
06931 (chipboard sleeve)	Cherry	144
06301 (bulk)	Cherry	144
<b>4 oz. PARA TOILET BOWL BLOCKS</b>		
08411	Cherry	144
<b>16 oz. PARA WALL BLOCKS</b>		
08161	Cherry	36
<b>24 oz. PARA WALL BLOCKS</b>		
08241	Cherry	36
<b>4 oz. PARA URINAL SCREEN WITH BLOCK</b>		
01991	Cherry	12

## HEALTH GARDS® PARA DEODORANT PRODUCTS



### HEALTH GARDS® PARA TOSS-IN BLOCKS

- Available in 3 oz. and 4 oz. sizes
- 100% Para Dichlorobenzene
- Continuous, economical odor control
- Packed 144 per master case

### HEALTH GARDS® PARA TOILET BOWL BLOCKS

- 4 oz. block with deluxe plastic hanger
- Universal fit for toilets
- Packed 144 per master case

### HEALTH GARDS® PARA WALL BLOCKS

- Available in 16 oz. and 24 oz. sizes
- Works 24 hours to eliminate malodors
- Hanging wall cartons available
- Packed 36 per master case

### HEALTH GARDS® URINAL SCREEN WITH PARA BLOCK

- Screen with block deodorizes for up to 30 days
- Prevents drain clogs while deodorizing
- Packed 12 screens per case

PRIVATE LABEL AVAILABLE



## BETTER BRUSH PRODUCTS

### WET FLOOR SIGN

Popular style 25" tall caution sign displays warning in both English and Spanish.  
Packed 10/carton

150325



### LOBBY DUST PAN

**Lobby Pan:** Black plastic pan with ergonomically styled handle. Comes with an integrated clip for attaching a lobby upright broom.

**Pan Only**

6/ctn 410112

**Pan and Broom Combo**

1/ctn 410212

**Straight Handle Lobby Pan:** Same pan with easy hanging handle.

**Straight Handle, no broom clip**

6/ctn 410512



### MOP BUCKET & WRINGER

Mop bucket & side press wringer combo.  
Sold as a complete set only. 1/ctn

**26 Liter**

153026

**35 Liter**

153035

**Replacement Wheels - each** 153103

**Replacement Wringer - each** 153115



### UTILITY PAD HOLDER

Swivel, compression fit pad holder accepts both threaded and tapered Handles. Holds pads with hook and loop bottom surface.

**9" Width**

370409

Hand held variety.

**9" Hand Held**

370609





# LATEX GLOVES

## HL-100

Natural latex glove. For excellent dexterity and durability. Flock lined for ease in putting on and taking off. Rolled cuff for extra durability 12" long. Resists a wide range of acids, alcohols and salts. Diamond pattering grip finish. Yellow. Retail packaging, each pair in poly bag. Available in S, M, L, XL, and is USDA approved.

## HL#-2

Natural latex flock lined heavy duty industrial weight 32 mils thick 13" long for better protection. Rolled cuff for tear resistance. Rough finish for excellent grip. Available in sizes S, M, L & XL.

## HL-SP

Extra strong latex glove flock lined S-XL

## HB-100

Same as HL-100 in blue.

## LN-100

Latex/neoprene, flock lined, L-XL

## AT-300 Comfortable Fit Glove

The ergonomic design, soft strong cotton, knit shell and flexible palm coatings makes it one of the most comfortable and versatile work gloves. This is a comfortable fit glove for gardening, fishing, sailing, construction and general work.



AT-300

718-488-9000 • FAX 718-694-9500

**1-800-237-8100**

Satisfaction Guaranteed



## Cut-End Screw Connectors

These mops are constructed to make mop loading quick and simple without touching a dirty mop. A screw is placed through the headband and a metal band securely locks the yarn in place. An economical easy to change screw connector handle is utilized.



Screw Connectors are designed to lay flat on the floor and cover a larger surface area. All Screw Connectors have a narrow band which is double stitched for strength.

DESCRIPTION	12 oz.	16 oz.	20 oz.	24 oz.	32 oz.
Ounce Series	Stock No.	Stock No.	Stock No.	Stock No.	Stock No.
Pride Cotton 4 Ply	5013	5014	5015	5016	5017
Brute Cotton 8 Ply	5043	5044	5045	5046	5047
Duty Rayon 4 Ply	5063	5064	5065	5066	5067
Quicksorb Rayon 8 Ply	5073	5074	5075	5076	5077
Raycot Natural 4 Ply	5093	5094	5095	5096	5097
Shipping Wt. Dz.	9 lbs.	12 lbs.	15 lbs.	18 lbs.	24 lbs.

DESCRIPTION	12	16	20	24	32
Number Series	Stock No.	Stock No.	Stock No.	Stock No.	Stock No.
Pride Cotton 4 Ply	6013	6014	6015	6016	6017
Brute Cotton 8 Ply	6043	6044	6045	6046	6047
Duty Rayon 4 Ply	6063	6064	6065	6066	6067
Quicksorb Rayon 8 Ply	6073	6074	6075	6076	6077
Raycot Natural 4 Ply	6093	6094	6095	6096	6097
Shipping Wt. Dz.	7 lbs.	10 lbs.	13 lbs.	16 lbs.	20 lbs.

## Plastic Lay-Flat/Twist On



Plastic Lay-Flat	16 oz. Stock No.	20 oz. Stock No.	24 oz. Stock No.	32 oz. Stock No.
Cotton Blend	6814	6815	6816	6817
Shipping Wt. Dz.	12 lbs.	15 lbs.	18 lbs.	24 lbs.



Plastic Twist On	16 oz. Stock No.	20 oz. Stock No.	24 oz. Stock No.	32 oz. Stock No.
Cotton Blend	6514	6515	6516	6517
Shipping Wt. Dz.	12 lbs.	15 lbs.	18 lbs.	24 lbs.





# PRODUCT BULLETIN

*Consistent Quality Floor Maintenance Pads for Any Application*

**Superb Cleaning and Polishing, Time After Time**

## **A Pad for Every Use:**

All floor maintenance pads illustrated and described are designed and produced to give superior performance on specific floor surfaces. They can be used wet or dry with conventional or ultra high speed machines in institutional, commercial or industrial applications.

## **Manufactured to Stringent Standards:**

All pads are a blend of polyester fibers bonded with a tough, strong, elastic synthetic resin and impregnated with abrasives. The specific types of fibers and abrasives used are related to the aggressiveness required for the particular floor maintenance procedure.

## **Built-in Resiliency:**

Each pad is designed and constructed to provide thorough and continuous contact with floor surface. Our open web construction enables easier dirt pick-up and permits faster pad cleaning under running water. All pads are usable on both sides with equal effectiveness..

## **Designed and Manufactured to Fit All Machines:**

Thick line pads are manufactured in sizes from 7 $\frac{3}{4}$ " to 32" in diameter. They are supplied with a center hole punch-out plug or with a bolt hole for high speed machines.

## *Conventional Thick Line Pads . . .*

### **BLACK STRIPPING**

For long lasting, heavy duty stripping.

### **BROWN DRY STRIPPING**

For fast, uniform stripping, wet or dry.

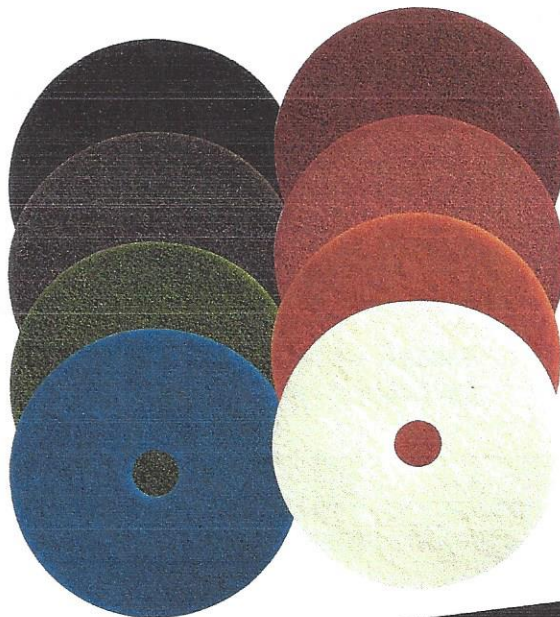
### **GREEN SCRUBBING**

For wet, heavy duty scrubbing.

### **BLUE SCRUBBING**

For wet, medium duty scrubbing.

All floor maintenance pads are color coded for easy identification. Manufactured for use with machines that operate at 175-350 RPM.



### **RED SPRAY BUFFING / CLEANING**

For dry buffing, spray buffing or light duty scrubbing.

### **40 RED BUFFING / CLEANING**

Softer and less aggressive than Red Spray Buff Pad.

### **TAN POLISHING**

For dry polishing buffable, synthetic or natural finishes.

### **WHITE POLISHING**

For dry polishing or with fine water mist to ensure high gloss.

[www.treleoni.com](http://www.treleoni.com)



**TRELEONI, LLC**  
1879 Joe Rogers Boulevard  
Manning, South Carolina 29102  
Office: 1-803-505-2800  
Fax: 1-803-505-2802



## JANITOR'S CART

High impact grey janitor cart with folding handle for easy storage. Zippered trash bag included. 8" rear wheels, adjustable center shelf and multiple hooks for tool storage. Front platform will hold a 32 gallon trash receptacle.

<b>Janitor Cart</b>	<b>154048</b>
<b>Replacement Zippered Bag</b>	<b>154125</b>
<b>Front Wheel Replacements - each</b>	<b>153103</b>
<b>Rear Wheel Replacements - each</b>	<b>154208</b>



## HAND-HELD DUST PAN

12" wide high impact black plastic dust pan has hanging hole and brush cleaning teeth.

**410412**



## BOTTLE & SPRAYER

Trigger sprayer with adjustable nozzle. Pick-up tube length 9-7/8". 200/ctn.

<b>Trigger Sprayer</b>	<b>550610</b>
------------------------	---------------

32 oz. Flame treated bottle. Gradations in ounces and milliliters. 100/ctn.

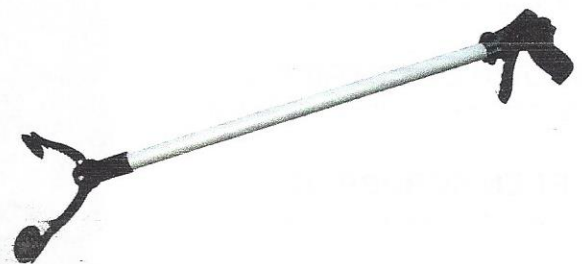
<b>Bottle</b>	<b>550732</b>
---------------	---------------



## TRASH PICKER

Premium heavy-duty pick-up tool has a wide 8" span between the rubber replaceable cups and allows for easy gripping of a variety of objects. 12/ctn.

<b>Trash Picker</b>	<b>550532</b>
<b>Replacement Cups</b>	<b>550802</b>



## HAND-HELD BUCKET

10 quart pail, wire bail handle, pour spout, and molded-in graduations.

**153210**





## DUSTERS

Ultra soft material allows fast and gentle dusting of items and surfaces. Available in poly wool and 100% lambs wool with either fixed or extension handles.

**Poly Wool**  
 20" Long Duster 470220  
 48" - 82" Extension Duster 470380

**100% Lambs Wool**  
 27" Long Duster 470427  
 30" - 45" Extension Duster 470545



470220

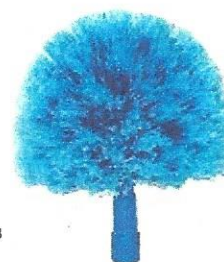


470427

## ROUND DUSTER

Used for dusting ceilings and fixtures. Works with any threaded handle or the #330259 or #330609 Extending Handles. Handle not included.

**500108 Blue**



500108

**Extending Handles:** Used with #500108 Round Duster.

Light weight, 2-section, adjusts from 30" to 60".

**330259**



330259

Medium weight, 3-section, adjusts from 46" to 118".

**330609**



330609

## OBLONG WALL & CEILING DUSTER

Twisted-In-Wire with white polypropylene. 12" overall width. Packed 2 per carton.

**500212**



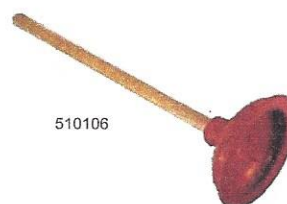
## FORCE CUPS

**Cup Style:** 6" Red cup with wood handle

**510106**

**Half Ball Style:** 5-1/2" Dia. black ball with wood handle

**510209**



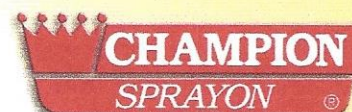
510106



510209



# INSECTICIDES



## Insect Repellent

- Spray on skin and/or clothes
- Contains 25% DEET
- Protects up to 5 hours
- Actives: DEET

**Repels:** Repels mosquitoes, chiggers, ticks, biting flies, deerflies, stable flies, blackflies, gnats and fleas on exposed skin surfaces. Repels mosquitoes which may carry WEST NILE VIRUS. Repels mosquitoes that may carry ENCEPHALITIS (St. Louis, Eastern equine, Western equine, LaCrosse, Cache Valley). Repels deer ticks which may carry LYME DISEASE.

**Product # 438-5109 EPA REG No 498-148**  
**Net Wt 6 oz (170 g) Case Pack 12**



## Metered Insecticide Spray

- Flying metered insecticide
- Highly concentrated formula
- Effective up to 6,000 cubic feet
- Lasts 28 days when sprayed at 15-minute intervals
- Actives: Natural pyrethrins

**Ideal for:** Dairies, barns, canneries, breweries, manufacturing plants, restaurants, hospitals, stores, motels, schools and other public buildings.

**Kills:** Extensive and complete list of kill claims available at: [www.chaseproducts.com](http://www.chaseproducts.com).

**Product # 438-5111 EPA REG No 498-196**  
**Net Wt 7 oz (198 g) Case Pack 12**

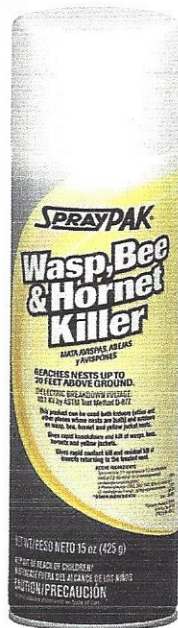
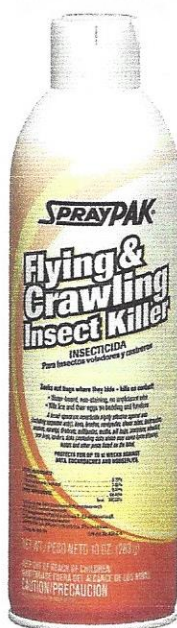
## Indoor Insect Fogger

- Flying and crawling indoor fogger insecticide
- Non-staining water-based formula
- Effective up to 6,000 cubic feet
- Does not have an unpleasant odor
- Actives: Mixture of natural pyrethrins and a synthetic pyrethroid, Permethrin

**Ideal for:** Rooms, apartments, homes, attics, basements, campers, boats, household storage areas, garages, pet sleeping areas, cabins.

**Kills:** Extensive and complete list of kill claims available at: [www.chaseproducts.com](http://www.chaseproducts.com).

**Product # 438-5105 EPA REG No 498-146**  
**Net Wt 6 oz (170 g) Case Pack 12**



## Flying & Crawling Insect Killer

- Multi-purpose flying and crawling insecticide
- Seeks out bugs where they hide
- Niche kills: Fleas, ticks, bedbugs, and lice and their eggs
- 12-week residual for ants, cockroaches, houseflies
- Non-staining water-based formula
- Pleasant cedar scent
- Actives: Mixture of natural pyrethrins and a synthetic pyrethroid, Permethrin

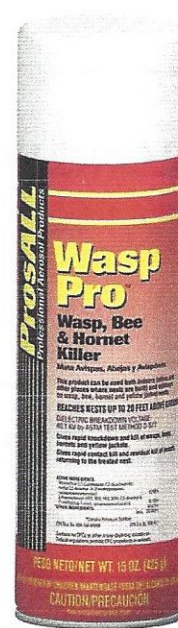
**Product # 433-4106 EPA REG No 498-174**  
**Net Wt 10 oz (283 g) Case Pack 12**

## Wasp, Bee & Hornet Killer

- Wasp, bee and hornet insecticide
- Rapid knockdown and kill
- Reaches nests up to 20 feet above ground
- Dielectric strength of 40.1 KV
- Active: Synthetic pyrethroid, Tetramethrin

**Product # 433-4108 EPA REG No 498-156**  
**Net Wt 15 oz (425 g) Case Pack 12**

**Specifically For:** School, government and municipality bids. Available only to stocking Chase distributors.



## WaspPro™

- Wasp, bee and hornet insecticide
- Rapid knockdown and kill
- Reaches nests up to 20 feet above ground
- Dielectric strength of 40.1 KV
- Active: Synthetic pyrethroid, Tetramethrin

**Product # 433-1120**  
**EPA REG No 498-156**  
**Net Wt 15 oz (425 g)**  
**Case Pack 12**

**ProsALL Program:** Available only at exclusive geographically selected distributors.





## Furniture Polish

- Wax-free cleaner, polish and protectant
- Restores and protects instantly
- Protects against fingerprints, water spots and spills
- Fresh lemon scent

Ideal for: Wood and metals.

Product # 438-5136 Net Wt 1 lb 1 oz (481 g) Case Pack 12

## Dust n' More™

- Lemon-oil emulsion
- Does not contain wax or silicone
- Fresh lemon scent
- SprayAnyWay valve

Ideal for: Pre-treatment of dusting cloths and mops. Also cleans and polishes metals.

Product # 438-5152 Net Wt 1 lb 2 oz (510 g) Case Pack 12

## Baseboard & Floor Stripper

- Foaming gel baseboard and floor stripper
- Ultimate cling and penetration
- Removes old wax, acrylics and dirt
- No offensive odor
- Inverted spray tip

Ideal for: Entrance ways, hallways, bathrooms, kitchens, offices, and any other areas that are hard for machines to get to.

Product # 438-5156 Net Wt 1 lb 3 oz (538 g) Case Pack 12



## Lemon Furniture Polish

- Wax-free cleaner, polish and protectant
- Restores and protects instantly
- Protects against fingerprints, water spots and spills
- Fresh lemon scent

Specifically for: School, government and municipality bids. Available only to stocking Chase distributors.

Product # 433-4109 Net Wt 1 lb 1 oz (481 g) Case Pack 12

## Baseboard Stripper

- Foaming gel baseboard and floor stripper
- Ultimate cling and penetration
- Removes old wax, acrylics and dirt
- No offensive odor
- Inverted spray tip

Specifically for: School, government and municipality bids. Available only to stocking Chase distributors.

Product # 433-4112 Net Wt 1 lb 3 oz (538 g)

Case Pack 12



ProsALL Program: Available only at exclusive geographically selected distributors.

## RichWood™

- Wax-free cleaner, polish and protectant
- Restores and protects instantly
- Protects against fingerprints, water spots and spills
- Fresh lemon scent

Product # 433-1108  
Net Wt 1 lb 1 oz (481 g)  
Case Pack 12

## MagnaDust™

- Lemon-oil emulsion
- Use as a dust cloth and mop treatment
- Does not contain wax or silicone
- Fresh lemon scent
- SprayAnyWay valve

Product # 433-1111  
Net Wt 1 lb 2 oz (510 g)  
Case Pack 12

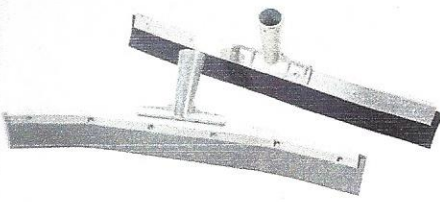
## QwikStrip™

- Foaming gel baseboard and floor stripper
- Ultimate cling and penetration
- Removes old wax, acrylics and dirt
- No offensive odor
- Inverted spray tip

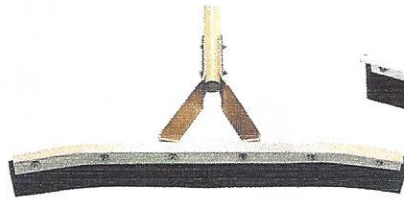
Product # 433-1118  
Net Wt 1 lb 3 oz (538 g)  
Case Pack 12



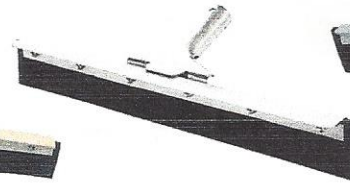




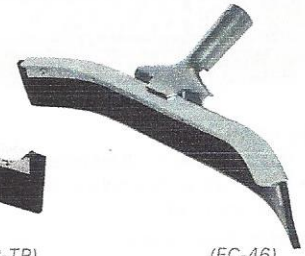
(46-TP)



(4618)



(EC-4118-TP)



(EC-46)

### Curved – Tapered

Item ID	Width (in)	Type	Blade Material	Carton Wt. (lbs)	Carton Qty	Handle Type	Includes Handle
4618-TP	18	Curved	Black Rubber	11	6	TA	No
4624-TP	24	Curved	Black Rubber	13	6	TA	No
4630-TP	30	Curved	Black Rubber	16	6	TA	No
4636-TP	36	Curved	Black Rubber	19	6	TA	No
4618-TPN	18	Curved	Neoprene	11	6	TA	No
4624-TPN	24	Curved	Neoprene	13	6	TA	No
4630-TPN	30	Curved	Neoprene	16	6	TA	No
4636-TPN	36	Curved	Neoprene	19	6	TA	No

### Curved with Handle

4618	18	Curved	Black Rubber	16	6	4100	Yes
4624	24	Curved	Black Rubber	18	6	4100	Yes
4630	30	Curved	Black Rubber	22	6	4100	Yes
4636	36	Curved	Black Rubber	23	6	4100	Yes
4618-N	18	Curved	Neoprene	16	6	4100	Yes
4624-N	24	Curved	Neoprene	18	6	4100	Yes
4630-N	30	Curved	Neoprene	22	6	4100	Yes
4636-N	36	Curved	Neoprene	23	6	4100	Yes

### All Steel

Economy Line all steel floor squeegees with tapered handle socket.

Item ID	Width (in)	Type	Blade Material	Carton Wt. (lbs)	Carton Qty	Handle Type	Includes Handle
EC 4118-TP	18	Straight ALL STEEL	Black Rubber	13 1/2	6	TA	No
EC 4124-TP	24	Straight ALL STEEL	Black Rubber	16 1/2	6	TA	No
EC 4130-TP	30	Straight ALL STEEL	Black Rubber	20 3/4	6	TA	No
EC 4136-TP	36	Straight ALL STEEL	Black Rubber	24 1/2	6	TA	No
EC 4618-TP	18	Curved ALL STEEL	Black Rubber	12 3/4	6	TA	No
EC 4624-TP	24	Curved ALL STEEL	Black Rubber	15 1/2	6	TA	No
EC 4630-TP	30	Curved ALL STEEL	Black Rubber	19	6	TA	No
EC 4636-TP	36	Curved ALL STEEL	Black Rubber	22 1/2	6	TA	No

Replacement Blades for all 41 and 46 line squeegees

Item ID	Width (in)	Blade Material	Carton Wt. (lbs)	Carton Qty.
4218	18	Black Rubber	8	12
4224	24	Black Rubber	11	12
4230	30	Black Rubber	13	12
4236	36	Black Rubber	16	12
4218-N	18	Neoprene	8	12
4224-N	24	Neoprene	11	12
4230-N	30	Neoprene	13	12
4236-N	36	Neoprene	16	12



## General Use

### MODEL 220™ TRIGGER SPRAYER **VALU-MIST®**

#### Great Value

Save 20% - 40% while maintaining resistance to common janitorial chemicals

#### Comfort Design

Three finger trigger and rear support make extended use more comfortable

#### Less Fatigue

Up to 20% greater output per stroke significantly reduces the number of times you pull the trigger

#### Applications

Restroom Cleaning, House Keeping, Window Cleaning, Car Washes, Auto Detailing, Pest Control, Lawn Care



Product #	Color	Dip Tube Length		Output mL	Thread Finish	Case Pack
		in	cm			
110220	White	8	20.3	1.1	28/400	200
110221	White	9 1/4	23.5	1.1	28/400	200
110222	Red/White	8	20.3	1.1	28/400	200
110224	Red/White	9 1/4	23.5	1.1	28/400	200
110230	Blue/White	8	20.3	1.1	28/400	200
110231	Blue/White	9 1/4	23.5	1.1	28/400	200

Patent # D447415

### MODEL 250™ TRIGGER SPRAYER **VALU-MIST®**

#### Non-Leaking

Engineered not to leak if bottle tips over

#### Comfort Design

Three finger trigger and rear support make extended use more comfortable

#### Less Fatigue

Up to 30% greater output per stroke significantly reduces the number of times you pull the trigger

#### Long Lasting

Outer body protects piston assembly from damage during use and storage

#### Great Value

Save 20% - 40% while maintaining resistance to common janitorial chemicals

#### Applications

Restroom Cleaning, House Keeping, Window Cleaning, Car Washes, Auto Detailing, Pest Control, Lawn Care



Product #	Color	Dip Tube Length		Output mL	Thread Finish	Case Pack
		in	cm			
110240	White	8	20.3	1.4	28/400	200
110241	White	9 1/4	23.5	1.4	28/400	200
110242	Blue/White	8	20.3	1.4	28/400	200
110244	Blue/White	9 1/4	23.5	1.4	28/400	200
110245	Red/White	8	20.3	1.4	28/400	200
110246	Red/White	9 1/4	23.5	1.4	28/400	200
110248	Green/White	9 1/4	23.5	1.4	28/400	200
110249	Yellow/White	9 1/4	23.5	1.4	28/400	200

Patent # D451388



# Commercial Plastic Wastebaskets

## COMMERCIAL PLASTIC WASTEBASKETS

The low profile and sleek, attractive design of these rectangular wastebaskets make them the right choice for a variety of applications ranging from classroom, office, commercial or institutional use.

Item Number	Shape	Capacity	Color	Pack Case	Case Weight	Case Cube
1358BE	Rectangular	13 <sup>5</sup> / <sub>8</sub> quart	○ Beige	12	15.00 lbs	1.68
1358BK	Rectangular	13 <sup>5</sup> / <sub>8</sub> quart	● Black	12	15.00 lbs	1.68
1358BN	Rectangular	13 <sup>5</sup> / <sub>8</sub> quart	● Brown	12	15.00 lbs	1.68
1358GY	Rectangular	13 <sup>5</sup> / <sub>8</sub> quart	● Grey	12	15.00 lbs	1.68
2818BE	Rectangular	28 <sup>1</sup> / <sub>8</sub> quart	○ Beige	12	27.00 lbs	2.88
2818BK	Rectangular	28 <sup>1</sup> / <sub>8</sub> quart	● Black	12	27.00 lbs	2.88
2818BN	Rectangular	28 <sup>1</sup> / <sub>8</sub> quart	● Brown	12	27.00 lbs	2.88
2818GY	Rectangular	28 <sup>1</sup> / <sub>8</sub> quart	● Grey	12	27.00 lbs	2.88
4114BE	Rectangular	41 <sup>1</sup> / <sub>4</sub> quart	○ Beige	12	35.16 lbs	3.48
4114BK	Rectangular	41 <sup>1</sup> / <sub>4</sub> quart	● Black	12	35.16 lbs	3.48
4114BN	Rectangular	41 <sup>1</sup> / <sub>4</sub> quart	● Brown	12	35.16 lbs	3.48
4114GY	Rectangular	41 <sup>1</sup> / <sub>4</sub> quart	● Grey	12	35.16 lbs	3.48
4438BE	Round	44 <sup>3</sup> / <sub>8</sub> quart	○ Beige	6	15.00 lbs	3.90
4438GY	Round	44 <sup>3</sup> / <sub>8</sub> quart	● Grey	6	15.00 lbs	3.90



Available in a Recycle model, see page 41 for details.

# Tilt N' Wheel

## TILT N' WHEEL

These 50 gallon containers have a hinged double walled lid with standard 8" non-marking wheels.

Item Number	Capacity	Color	Pack Case	Case Weight	Case Cube
5850BK	50 gallon	● Black	2	56.00 lbs	18.54
5850YW	50 gallon	● Yellow	2	56.00 lbs	18.54



Available in a Recycle model, see page 42 for details.

