



Bid Number 50 – 00112924

2-Year contract of shirts and caps to be ordered on an as needed basis.
To be used by all departments and agencies within Jefferson Parish.

April 30, 2015, 2:00 PM

ATTENTION VENDORS!!!

Please review all pages and respond accordingly, complying with all provisions in the technical specifications and Jefferson Parish Instructions for Bidders and General Terms and Conditions. All bids must be received in the Purchasing Department by the bid due date and time.

**Jefferson Parish Purchasing Department
200 Derbigny Street
General Government Building, Suite 4400
Gretna, LA 70053
Buyer Name: Melissa Ovalle
Buyer Email: movalle@jeffparish.net
Buyer Phone: 504-364-2687**

DATE: 4/13/2015

INVITATION TO BID
THIS IS NOT AN ORDER

BID NO.: 50-00112924

JEFFERSON PARISH
PURCHASING DEPARTMENT
P.O. BOX 9
GRETNA, LA. 70054-0009
504-364-2678

Page: 1

BUYER: MOVALLE@jeffparish.net

BIDS WILL BE RECEIVED IN THE PURCHASING DEPARTMENT, SUITE 4400, JEFFERSON PARISH GENERAL GOVERNMENT BUILDING, 200 DERBIGNY STREET, GRETNA, LA 70053 UNTIL 2:00 PM, 4/30/2015 AND PUBLICLY OPENED THEREAFTER.

LATE BIDS WILL NOT BE ACCEPTED

Unless submitting via online (see Page 3), each bid must be submitted in a sealed envelope bearing on the outside; the name of the Bidder, his address, and the name of the project for which the bid is submitted and the bid number.

NOTE: ONLY BIDS WRITTEN IN INK OR TYPEWRITTEN, AND PROPERLY SIGNED BY A MEMBER OF THE FIRM OR AUTHORIZED REPRESENTATIVE, WILL BE ACCEPTED. PENCIL AND/OR PHOTOSTATIC FIGURES OR SIGNATURES SHALL RESULT IN BID REJECTION.

INSTRUCTIONS FOR BIDDERS AND GENERAL CONDITIONS

THE FOLLOWING INSTRUCTIONS APPLY TO ALL BIDS

All bids submitted are subject to these instructions and general conditions and any special conditions and specifications contained herein, all of which are made part of this bid proposal reference. By submitting a bid, vendor agrees to comply with all provisions of Louisiana Law as well compliance with the Jefferson Parish Code of Ordinances, Louisiana Code of Ethics, applicable Jefferson Parish ethical standards and Jefferson Parish Resolution No. 113646 and/or Resolution No. 113647.

All vendors submitting bids must register as a Jefferson Parish vendor if not already yet registered. Bidders may be required to furnish current W-9 Forms and respective Tax Identification Numbers within 10 days after bid opening if such information is not on file or not up to date. Forms to register may be downloaded from www.purchasing.jeffparish.net and clicking on Vendor Information.

All quotations shall be based on F.O.B. Agency warehouse or job site, anywhere within the Parish as designated by the Purchasing Department. This provision does not apply to public works projects

JEFFERSON PARISH requires all products to be new (current) and all work must be performed according to standard practices for the project. Unless otherwise specified, no aftermarket parts will be accepted. Unless otherwise specified, all workmanship and materials must have at least one (1) year guaranty, in writing, from the date of delivery and/or acceptance of the project. Any deviations or alterations from the specifications must be indicated and/or supporting documentation supplied with bid submission.

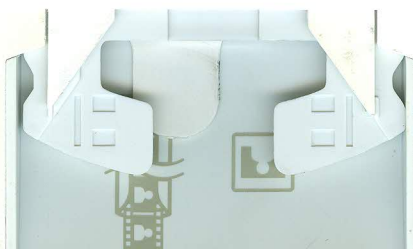
Bidders should submit all questions in writing and fax them to the Purchasing Department at (504) 364-2693 no later than FIVE (5) working days prior to bid opening. Bid numbers should be mentioned in all requests. Questions may also be emailed to the buyer for this bid at the email address listed above. If submitting online, vendors may send questions via the E-Procurement site no later than Five (5) working days prior to the bid opening.

If this bid requires a pre-bid conference (see Additional Requirements section), bidders are advised that such conference will be held to allow bidders the opportunity to identify any discrepancies in the bid specifications and seek further clarification regarding instructions. The Purchasing Department will issue a written response to bidders' questions in the form of an Addendum. Please note that all official communication will be expressed in the form of an addendum.

All formal Addenda require written acknowledgement on the bid form by the bidder. Failure to acknowledge an Addendum on the bid form shall cause the bid to be rejected. JEFFERSON PARISH reserves the right to award bid to next lowest responsive and responsible bidder in this event.

The purpose and intention of this invitation to bid is to afford all suppliers an equal opportunity to bid on all construction, maintenance, repair, operating supplies and/or equipment listed in this bid proposal. JEFFERSON PARISH WILL ACCEPT ONE BID ONLY FROM EACH VENDOR. Items bid must meet specifications.

Visit our website at [HTTP://PURCHASING.JEFFPARISH.NET](http://PURCHASING.JEFFPARISH.NET)



JEFFERSON PARISH will accept one price for each item unless otherwise indicated. Two or more prices for one item will result in bid rejection. Bidders are required to complete, sign and return the bid form and/or complete and return the associated line item pricing forms as indicated.

If the bid exceeds \$30,000.00 and the company is duly authorized to do business in the state of Louisiana, a corporate resolution must be submitted with the bid or the person signing the bid documents must be listed on the Louisiana Secretary of State's website as an officer of the corporation, unless bidder has otherwise complied with LSA-R.S. 38:2212(A)(1)(c) or LSA-R.S. 38:2212 (O). If the bid is in excess of \$30,000 and bidder is registered out of the state of Louisiana, a corporate resolution must be submitted with the bid, unless bidder has otherwise complied with LSA-R.S. 38:2212(A)(1)(c) or LSA-R.S. 38:2212 (O). Failure to comply will cause bid to be rejected; the Parish reserves the right to award bid to the next lowest responsive and responsible bidder in this event. Bids submitted by Owner or Sole Proprietorships must include certification that he or she owns the entity for which the bid is signed. Sole proprietors submitting bids for public works projects shall within 10 days after bid opening submit sole proprietorship certification.

NOTE: A sample corporate resolution can be downloaded from our website <http://purchasing.jeffparish.net> or you may provide your own document. A sample certification of sole proprietorship can also be downloaded from our website <http://purchasing.jeffparish.net> or you may provide your own document.

INSTRUCTIONS FOR BIDDERS AND GENERAL CONDITIONS

A. AWARD OF CONTRACT: JEFFERSON PARISH reserves the right to award contracts or place orders on a lump sum or individual item basis, or such combination, as shall in its judgment be in the best interest of JEFFERSON PARISH. Every contract or order shall be awarded to the LOWEST RESPONSIVE and RESPONSIBLE BIDDER, taking into consideration the CONFORMITY WITH THE SPECIFICATIONS and the DELIVERY AND/OR COMPLETION DATE. IN THE EVENT OF SPLIT AWARD, THE PURCHASING DEPARTMENT MAY CONTACT VENDORS TO REQUEST REQUIRED AFFIDAVITS. THOSE VENDORS WILL HAVE 10 DAYS FROM THE DATE OF NOTICE TO SUBMIT COMPLETE, SIGNED AND NOTARIZED AFFIDAVITS IN ORIGINAL FORMATS.

All bid prices shall remain valid for 45 days. Jefferson Parish and the lowest responsive and responsible bidder(s) by mutual written consent may mutually agree to extend the deadline for award by one (1) or more extensions of thirty (30) calendar days.

Preference is hereby given to materials, supplies, and provisions produced, manufactured or grown in Louisiana, quality being equal to articles offered by competitors outside the state. "LSA-R.S.38:2251-2261"

B. USE OF BRAND NAMES AND STOCK NUMBERS: Where brand names and stock numbers are specified, it is for the purpose of establishing certain minimum standards of quality. Bids may be submitted for products of equal quality, provided brand names and stock numbers are specified. Complete product data may be required prior to award.

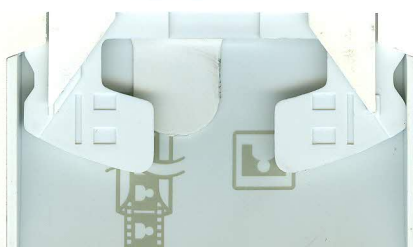
C. CANCELLATION OF CONTRACT: JEFFERSON PARISH reserves the right to cancel all or any part if not shipped promptly. No charges will be allowed for parking or cartage unless specified in quotation. The order must not be filled at a higher price than quoted. JEFFERSON PARISH reserves the right to cancel any contract at anytime and for any reason by issuing a THIRTY (30) day written notice to the contractor.

For good cause and as consideration for executing a contract with Jefferson Parish, vendor conveys, sells, assigns and transfers to Jefferson Parish or its assigns all rights, title and interest in and to all causes of action it may now or hereafter acquire under the antitrust laws of the United States and the State of Louisiana, relating to the particular good or services purchased or acquired by Jefferson Parish.

D. PRICES: Jefferson Parish is exempt from paying sales tax under LSA-R.S. 47:301 (8)(c). All prices for purchases by Jefferson Parish of supplies and materials shall be quoted in the unit of measure specified and unless otherwise specified, shall be exclusive of state and Parish taxes. The price quoted for work shall be stated in figures. In the event there is a difference in unit prices and totals, the unit price shall prevail.

Quantities listed are for bidding purposes only. Actual requirements may be more or less than quantities listed.

Bidders are not to exclude from participation in, deny the benefits of, or subject to discrimination under any program or activity, any person in the United States on the grounds of race, color, national origin, or sex; nor discriminate on the basis of age under the Age Discrimination Act of 1975, or with respect to an otherwise qualified handicapped individual as provided in Section 504 of the Rehabilitation Act of 1973, or on the basis of religion, except that any exemption from such prohibition against discrimination on the basis of religion as provided in the Civil Rights Act of 1964, or Title VI and VII of the Act of April 11, 1968, shall also apply. This assurance includes compliance with the administrative requirements of the Revenue Sharing final handicapped discrimination provisions contained in Section 51.55 (c), (d), (e), and (k)(5) of the Regulations. New construction or renovation projects must comply with Section 504 of the 1973 Rehabilitation Act, as amended, in accordance with the American National Standard Institute's specifications (ANSI A17.1-1961).



E. RESPONSE TO INVITATION: If your company is unable to bid on this request, please state your reason on bid form, and return to this office before bid opening date. Failure to do so may result in the removal of your company from Jefferson Parish's vendors list.

F. POSTING OF BIDS: A listing of bids will be posted on bulletin board in Suite 4400, Jefferson Parish General Government Building, Gretna, LA and will remain posted until close of respective bids.

Advertised bids will be tabulated and a copy of the tabulation will be forwarded to each responding bidder.

IN ACCORDANCE WITH STATE REGULATIONS JEFFERSON PARISH OFFERS ELECTRONIC PROCUREMENT TO ALL VENDORS

This Electronic Procurement System allows vendors the convenience of reviewing and submitting bids online. This is a secure site and authorized personnel have limited read access only. Please note requirements contained in this bid package for electronic bid submission.

Please visit the Purchasing Department webpage at <http://purchasing.jeffparish.net> to register and review Jefferson Parish solicitations.

The general specifications for construction projects and the purchase of materials, services and/or supplies are those adopted by the JEFFERSON PARISH Council by Resolution No. 113646 or 113647 dated 12/09/09. The general conditions adopted by this resolution shall be considered as much a part of this document as if they were written wholly herein. A copy may be obtained from the Office of the Parish Clerk, Suite 6700, Jefferson Parish General Government Building, 200 Derbigny Street, Gretna, LA 70053. You may also obtain a copy by visiting the Purchasing Department webpage at <http://purchasing.jeffparish.net> and clicking on Online Forms.

ADDITIONAL REQUIREMENTS FOR THIS BID

PLEASE MATCH THE NUMBERS PRINTED IN THIS BOX WITH THE CORRESPONDING INSTRUCTIONS BELOW.

10,12,13,15

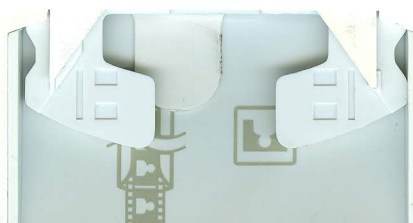
1. All bidders must attend the pre-bid conference in relation to this bid; attendance is mandatory. Failure to attend will prohibit a company from submitting a bid. Vendors arriving after the mandatory pre-bid conference begins will not be allowed to sign in as evidence of attendance.
2. Attendance to this pre-bid conference is optional. However, failure to attend the pre-bid conference shall not relieve the bidder of responsibility for information discussed at the conference. Furthermore, failure to attend the pre-bid conference and inspection does not relieve the successful bidder from the necessity of furnishing materials or performing any work that may be required to complete the work in accordance with the specification with no additional cost to the owner.
3. Contractor must hold current applicable JEFFERSON PARISH licenses with the Department of Inspection and Code Enforcement. Contractor shall obtain any and all permits required by the JEFFERSON PARISH Department of Inspection and Code Enforcement. The contractor shall be responsible for the payment of these permits. All permits must be obtained prior to the start of the project. Contractor must also hold any and all applicable Federal and State licenses. Contractor shall be responsible for the payment of these permits and shall obtain them prior to the start of the project.



INSTRUCTIONS FOR BIDDERS AND GENERAL CONDITIONS

4. A LA State Contractor's License will be required in accordance with LSA R.S. 37-2150 et. seq. and such license number will be shown on the outside of the bid envelope. Failure to comply will cause the bid to be rejected. Additionally if submitting the bid electronically, then the license number must be entered in the appropriate field in the Electronic Procurement system. Failure to comply will cause the bid to be rejected.
5. It is the bidder's responsibility to visit the job site and evaluate the job before submitting a bid.
6. Job site must be clean and free of all litter and debris daily and upon completion of the contract. Passageways must be kept clean and free of material, equipment, and debris at all times. Flammable material must be removed from the job site daily because storage will not be permitted on the premises. Precautions must be exercised at all times to safeguard the welfare of JEFFERSON PARISH and the general public.
7. PUBLIC WORKS BIDS: All awards for public works in excess of \$5,000.00 will be reduced to a formal contract which shall be recorded at the contractor's expense with the Clerk of Court and Ex-Officio Recorder of Mortgages for the Parish of Jefferson. A price list of recordation costs may be obtained from the Clerk of Court and Ex-Officio Recorder of Mortgages for the Parish of Jefferson. All awards in excess of \$25,000.00 will require both a performance and a payment bond. Unless otherwise stated in the bid specifications, the performance bond requirements shall be 100% of the contract price. Unless otherwise state in the bid specifications, the payment bond requirements shall be 100% of the contract price. Both bonds shall be supplied at the signing of the contract.
8. NON-PUBLIC WORKS BIDS: A performance bond will be required for this bid. The amount of the bond will be 100% of the contract price unless otherwise indicated in the specifications. The performance bond shall be supplied at the signing of the contract.
9. NON-PUBLIC WORKS BIDS: A payment bond will be required for this bid. The amount of the bond will be 100% of the contract price unless otherwise indicated in the specifications. The payment bond shall be supplied at the signing of the contract.
10. Unless otherwise stated in the bid specifications, the successful bidder will be required to procure standard insurance policies evidencing Parish-mandated insurance requirements as indicted on the attached sheet. The current certificate of insurance must be submitted by low bidder within 10 days after bid opening to the Purchasing Department. Failure to comply will cause bid to be rejected. JEFFERSON PARISH reserves the right to award bid to the next lowest responsive and responsible bidder in this event.
11. A bid bond will be required with bid submission in the amount of 5% of the total bid, unless otherwise stated in the bid specifications. Acceptable forms shall be limited to cashier's check, certified check, or surety bid bond. If submitting a bid online, vendors must submit an electronic bid bond through the respective online clearinghouse bond management system(s) as indicated in the electronic bid Solicitation on Central Auction House. No scanned paper copies of any bid bond will be accepted as part of the electronic bid submission.
12. This is a requirements contract to be provided on an as needed basis. JEFFERSON PARISH makes no representations or warranties with regard to minimum guaranteed quantities unless otherwise stated in the bid specifications.
13. Freight charges should be included in total cost when quoting. If not quoted FOB DELIVERED, freight must be quoted as a separate item. Bid may be rejected if not quoted FOB DELIVERED or if freight charges are not indicated on bid form.
14. PUBLIC WORKS BIDS - Completed, Signed and Properly Notarized Affidavits (in Original Format) required; Non-Conviction Affidavit, Non-Collusion Affidavit, Campaign Contribution Affidavit and E-Verify Affidavit must be completed, signed, notarized and submitted by low bidder within 10 days after bid opening to the Purchasing Department on all solicitations for construction, alteration or demolition of public building or project, including but not limited to requirements found in LSA-RS 38:2212.9; LSA-RS 38:2212.10; LSA-RS 38:2224; Code of Ordinances, Jefferson Parish, Louisiana, Sec 2-923.1. Failure to comply will cause bid to be rejected; the Parish reserves the right to award bid to the next lowest responsive and responsible bidder in this event. For the convenience of vendors, all affidavits have been combined into one form entitled PUBLIC WORKS BID AFFIDAVIT. This affidavit must be submitted in its original format for the bid to be considered responsive.
15. NON PUBLIC WORK BIDS - Completed, Signed and Properly Notarized Affidavits (in Original Format) required; Non-Collusion Affidavit, and Campaign Contribution Affidavit must be completed, signed, notarized and submitted by low bidder with bid submission within 10 days after bid opening to the Purchasing Department. See LSA-RS 38:2212.10; LSA-RS 38:2224; Code of Ordinances, Jefferson Parish, Louisiana, Sec 2-923.1 Failure to comply will cause bid to be rejected; the Parish reserves the right to award bid to the next lowest responsive and responsible bidder in this event. For the convenience of vendors, all affidavits have been combined into one form entitled NON-PUBLIC WORKS BID AFFIDAVIT. This affidavit must be submitted in its original format for the bid to be considered responsive.

It shall be the duty of every parish officer, employee, department, agency, special district, board, and commission: and the duty of every contractor, subcontractor, and licensee of the parish, and the duty of every applicant for certification of eligibility for a parish contract or program, to cooperate with the Inspector General in any investigation, audit, inspection, performance review, or hearing pursuant to Jefferson Parish Code of Ordinances Section 2-155.10(19). By submitting a bid, vendor acknowledges this and will abide by all provisions of the referenced Jefferson Parish Code of Ordinances.



DATE: 4/13/2015

Page: 5

BID NO.: 50-00112924

BID FORM
Non Public Works

All Public Work Projects are required to use the Louisiana Uniform Public Work Bid Form

All prices must be held firm unless an escalation provision is requested in this bid. Jefferson Parish will allow one escalation during the term of the contract, which may not exceed the U.S. Bureau of Labor Statistics National Index for all Urban Consumers, unadjusted 12 month figure. The most recently published figure issued at the time an adjustment is requested will be used. A request must be made in writing by the vendor, and the escalation will only be applied to purchases made after the request is made.

Are you requesting an escalation provision?

YES X NO _____

MAXIMUM ESCALATION PERCENTAGE REQUESTED 3 %

INITIAL BID PRICES WILL REMAIN FIRM THROUGH THE DATE OF 2/1/2016

For the purposes of comparison of bids when an escalation provision is requested, Jefferson Parish will apply the maximum escalation percentage quoted by the bidder to the period to which it is applied in the bid. The initial price and the escalation will be used to calculate the total bid price. It will be assumed, for comparison of prices only, that an equal amount of material or labor is purchased each month throughout the entire contract.

DELIVERY: FOB JEFFERSON PARISH

INDICATE DELIVERY DATE ON EQUIPMENT AND SUPPLIES

14 days ARO

LOUISIANA CONTRACTOR'S LICENSE NO.: (if applicable) 41748989F

THIS SECTION MUST BE COMPLETED BY BIDDER:

FIRM NAME: Logo Dynamics Inc

ADDRESS: 7206 Impala DR #201

CITY, STATE: Richmond VA ZIP: 23228

TELEPHONE: (804) 241-1152 FAX: ()

EMAIL ADDRESS: Matt@LogoMD.com

In the event that addenda are issued with this bid, bidders MUST acknowledge all addenda on the bid form. Bidder must acknowledge receipt of an addendum on the bid form as indicated. Failure to acknowledge any addendum on the bid form will result in bid rejection.

Acknowledge Receipt of Addenda: NUMBER: 2 dated 4/23/2015

NUMBER: _____

NUMBER: _____

NUMBER: _____

TOTAL PRICE OF ALL BID ITEMS: \$ 53,287¹⁶

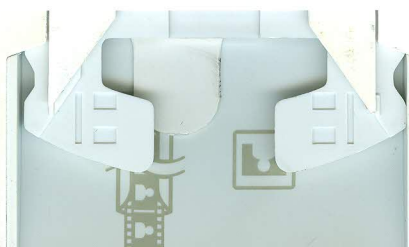
AUTHORIZED SIGNATURE: [Signature]

TITLE: Government Sales Manager

Robert Tijerina
Printed Name

SIGNING INDICATES YOU HAVE READ AND COMPLY WITH THE INSTRUCTIONS AND CONDITIONS.

NOTE: All bids should be returned with the BID NUMBER and BID OPENING DATE indicated on the outside of the envelope submitted to the Purchasing Department.

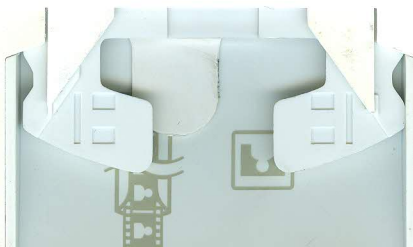


INVITATION TO BID FROM JEFFERSON PARISH - continued

BID NO.: 50-00112924

SEALED BID

| ITEM NUMBER | QUANTITY | U/M | DESCRIPTION OF ARTICLES | UNIT PRICE QUOTED | TOTALS |
|----------------|----------|------|--|----------------------|----------|
| 1 | 112.00 | ONLY | <p>2 YEAR CONTRACT OF SHIRTS AND CAPS TO BE ORDERED ON AN AS NEEDED BASIS. TO BE USED BY ALL DEPARTMENTS AND AGENCIES WITHIN JEFFERSON PARISH.</p> <p>0010 Group A - Tee Shirts Size: Adult 3X-Large</p> <p>Short Sleeve</p> <p>GENERAL SPECIFICATIONS FOR TEE SHIRTS Fruit of The Loom Best Shirt Or Equal</p> <p>Group A - Tee Shirts 50 Percent Polyester, 50 Percent Cotton Short Sleeves - Long Sleeves Weaved Bland Cotton Crew Neck</p> <p>Available In The Following Colors:</p> <p>Cardinal Red - Red - Purple - White - Royal Blue - Light Blue - Navy Blue - Orange - Gold - Ash - Yellow - Maroon - Kelly Green - Forest Green - Black</p> | 5.64 | 631.68 |
| 2 | 97.00 | ONLY | <p>0011 Group A - Tee Shirts Size: Adult 4X-Large</p> <p>Short Sleeve Special Order Not All Colors Available Color Varies With Size Increase</p> | 5.64 | 547.08 |
| 3 | 47.00 | ONLY | <p>0012 Group A - Tee Shirts Size: Adult 5X-Large</p> <p>Short Sleeve Special Order Not All Colors Available Color Varies With Size Increase</p> | 5.64 | 265.08 |
| 4 | 208.00 | ONLY | <p>0013 Group A - Tee Shirts Size: Adult 2X-Large</p> <p>Short Sleeve</p> | 4.78 | 994.24 |
| 5 | 386.00 | ONLY | <p>0014 Group A - Tee Shirts Size: Adult X-Large</p> <p>Short Sleeve</p> | 2.53 | 976.58 |
| 6 | 514.00 | ONLY | <p>0015 Group A - Tee Shirts Size: Adult Large</p> <p>Short Sleeve</p> | 2.53 | 1,300.42 |
| 7 | 685.00 | ONLY | <p>0016 Group A - Tee Shirts Size: Adult Medium</p> | 2.53 | 1,733.05 |

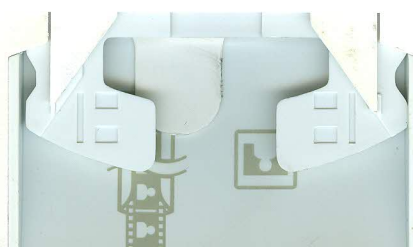


INVITATION TO BID FROM JEFFERSON PARISH - continued

BID NO.: 50-00112924

SEALED BID

| ITEM NUMBER | QUANTITY | U/M | DESCRIPTION OF ARTICLES | UNIT PRICE QUOTED | TOTALS |
|----------------|----------|------|--|----------------------|----------|
| 8 | 822.00 | ONLY | Short Sleeve 0017 Group A - Tee Shirts Size: Adult Small | 2.53 | 2079.66 |
| 9 | 721.00 | ONLY | Short Sleeve 0018 Group A - Tee Shirts Size: Youth Large | 2.51 | 1,809.71 |
| 10 | 720.00 | ONLY | Short Sleeve 0019 Group A - Tee Shirts Size: Youth Medium | 2.51 | 1807.20 |
| 11 | 710.00 | ONLY | Short Sleeve 0020 Group A - Tee Shirts Size: Youth Small | 2.51 | 1,782.10 |
| 12 | 144.00 | ONLY | Short Sleeve 0021 Group A - Tee Shirts Size: Adult 2X-Large | 5.88 | 846.72 |
| 13 | 92.00 | ONLY | Long Sleeve 0022 Group A - Tee Shirts Size: Adult X-Large | 4.94 | 454.48 |
| 14 | 38.00 | ONLY | Long Sleeve 0023 Group A - Tee Shirts Size: Adult Large | 4.94 | 187.72 |
| 15 | 26.00 | ONLY | Long Sleeve 0024 Group A - Tee Shirts Size: Adult Medium | 4.94 | 128.44 |
| 16 | 43.00 | ONLY | Long Sleeve 0025 Group B - Henley Tee Shirts Or Equal Size: Adult 2X-Large Augusta Henley Tee Shirt Henley Neck With Two Button Placket Short Sleeve 50 Percent Polyester/50 Percent Cotton Left Chest Silk Screen Imprint | 12.14 | 522.02 |



INVITATION TO BID FROM JEFFERSON PARISH - continued

BID NO.: 50-00112924

SEALED BID

| ITEM NUMBER | QUANTITY | U/M | DESCRIPTION OF ARTICLES | UNIT PRICE QUOTED | TOTALS |
|----------------|----------|------|--|----------------------|----------|
| | | | <p>Available In The Following Colors:</p> <p>Light Blue - Silver Grey - Dark Green - Royal Navy - Red - White - Ash - Maroon</p> <p>Other Seasonal Colors May Be Ordered On This Contract With The Understanding They May Not Be Available The Next Year</p> <p>These Specifications Are Applicable To All Henley Tee Shirts On This Bid.</p> | | |
| 17 | 36.00 | ONLY | 0026 Group B - Henley Tee Shirts Size: Adult X-Large Imprint Left Chest | 17. 9.90 | 356.40 |
| 18 | 3.00 | ONLY | 0027 Group B - Henley Tee Shirts Size: Adult Large Imprint Left Chest | 18. 9.90 | 29.70 |
| 19 | 130.00 | ONLY | 0028 Group B - Henley Tee Shirts Size: Adult Medium Imprint Left Chest | 19. 9.90 | 1,287.00 |
| 20 | 168.00 | ONLY | 0029 Group B - Henley Tee Shirts Size: Adult Small Imprint Left Chest | 20. 9.90 | 1,663.20 |
| 21 | 50.00 | ONLY | 0030 Group C - Coaches Shirts Size: Adult 3X-Large Hartwell Coaches Shirt Or Equal NO POCKET 50 Percent Polyester/50 Percent Cotton Three (3) Button Placket Knit Collar Set Short Sleeve Vented Sides Available In The Following Colors: Red - Navy Blue - Royal Blue - Ash - Green - Hunter Green - Maroon - White - Black - Orange - Pink - Yellow - Teal These Specifications Apply To All Coaches Shirts With No Pocket | 21. 16.23 | 811.50 |
| 22 | 22.00 | ONLY | 0031 Group C - Coaches Shirts Size: Adult 4X-Large | 22. 17.05 | 375.10 |

INVITATION TO BID FROM JEFFERSON PARISH - continued

BID NO.: 50-00112924

SEALED BID

| ITEM NUMBER | QUANTITY | U/M | DESCRIPTION OF ARTICLES | UNIT PRICE QUOTED | TOTALS |
|----------------|----------|------|--|----------------------|----------|
| 23 | 1.00 | ONLY | 0032 Group C - Coaches Shirts Size: Adult 5X-Large | 23. 18.69 | 18.69 |
| 24 | 39.00 | ONLY | 0033 Group C - Coaches Shirts Size: Adult 2X-Large | 24. 14.60 | 569.40 |
| 25 | 44.00 | ONLY | 0034 Group C - Coaches Shirts Size: Adult X-Large | 25. 11.70 | 514.80 |
| 26 | 95.00 | ONLY | 0035 Group C - Coaches Shirts Size: Adult Large | 26. 11.70 | 1,111.50 |
| 27 | 121.00 | ONLY | 0036 Group C - Coaches Shirts Size: Adult Medium | 27. 11.70 | 1,415.70 |
| 28 | 126.00 | ONLY | 0037 Group C - Coaches Shirts Size: Adult Small | 28. 11.70 | 1,474.20 |
| 29 | 116.00 | ONLY | 0038 Group D - Heavy Weight Pocket Tee Shirt Size: Adult 3X-Large Jerzees Adult Heavy Weight Pocket Tee Shirt Or Equal 50 Percent Polyester/ 50 Percent Cotton Short Sleeves Weaved Blend Cotton Crew Neck Available In The Following Color: Royal Blue These Specifications Are Applicable To All Heavy Weight Tee Shirts Within This Bid | 29. 6.95 | 806.20 |
| 30 | 116.00 | ONLY | 0039 Group D - Heavy Weight Pocket Tee Shirt Size: Adult 2X-Large | 30. 6.91 | 801.56 |
| 31 | 115.00 | ONLY | 0040 Group D - Heavy Weight Pocket Tee Shirt | 31. 5.21 | 599.15 |

INVITATION TO BID FROM JEFFERSON PARISH - continued

BID NO.: 50-00112924

SEALED BID

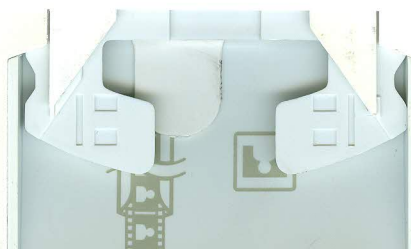
| ITEM NUMBER | QUANTITY | U/M | DESCRIPTION OF ARTICLES | UNIT PRICE QUOTED | TOTALS |
|----------------|----------|------|---|----------------------|----------|
| 32 | 88.00 | ONLY | Size: Adult X-Large 0041 Group D - Heavy Weight Pocket Tee Shirt | 32. 5.21 | 458.48 |
| 33 | 66.00 | ONLY | Size: Adult Large 0042 Group D - Heavy Weight Pocket Tee Shirt | 33. 5.21 | 343.86 |
| 34 | 12.00 | ONLY | Size: Adult Medium 0043 Group D - Heavy Weight Pocket Tee Shirt | 34. 5.21 | 62.52 |
| 35 | 29.00 | ONLY | Size: Adult Small 0044 Group D - Heavy Weight Pocket Tee Shirt | 35. 7.71 | 223.59 |
| 36 | 20.00 | ONLY | Size: Adult 4X-Large 0045 Group D - Heavy Weight Pocket Tee Shirt | 36. 7.89 | 157.80 |
| 37 | 25.00 | ONLY | Size: Adult 5X-Large 0046 Group E - Coaches Shirts With Pocket | 37. 13.58 | 339.50 |
| | | | Size: Adult Small Hartwell Coaches Shirt Or Equal With Pocket 40 Percent Polyester 60 Percent Cotton Three (3) Button Placket Knit Collar Set Short Sleeves Tee Shirt Material Available In The Following Colors: Red - Royal Blue - Black - Orange - Tan Navy Blue - Hunter Green - White - Silver Grey - Maroon - Pink - Yellow - Teal These Specifications Apply To All Coaches Shirts With Pocket | | |
| 38 | 60.00 | ONLY | 0047 Group E - Coaches Shirts With Pocket | 38. 19.01 | 1,140.60 |
| 39 | 60.00 | ONLY | Size: Adult 4X-Large 0048 Group E - Coaches Shirts With Pocket | 39. 20.63 | 1,237.80 |

INVITATION TO BID FROM JEFFERSON PARISH - continued

BID NO.: 50-00112924

SEALED BID

| ITEM NUMBER | QUANTITY | U/M | DESCRIPTION OF ARTICLES | UNIT PRICE QUOTED | TOTALS |
|----------------|----------|------|--|----------------------|----------|
| 40 | 80.00 | ONLY | Size: Adult 5X-Large 0049 Group E - Coaches Shirts With Pocket | 40. 18.19 | 1455.20 |
| 41 | 145.00 | ONLY | Size: Adult 3X-Large 0050 Group E - Coaches Shirts With Pocket | 41. 16.56 | 2,401.20 |
| 42 | 275.00 | ONLY | Size: Adult 2X-Large 0051 Group E - Coaches Shirts With Pocket | 42. 13.58 | 3,734.50 |
| 43 | 275.00 | ONLY | Size: Adult X-Large 0052 Group E - Coaches Shirts With Pocket | 43. 13.58 | 3,734.50 |
| 44 | 102.00 | ONLY | Size: Adult Large 0053 Group E - Coaches Shirts With Pocket | 44. 13.58 | 1,385.16 |
| 45 | 290.00 | ONLY | Size: Adult Medium 0054 Group F - Caps - Golf Style Poplin Youngan 8659H, Or Equal | 45. 3.23 | 936.70 |
| 46 | 4.00 | ONLY | Screen To Be With Various Departmental Logos In Jefferson Parish. Cap Is One Piece Front Panel Sewn In Mesh Stay Braided Visor Cord Matching Sweatband Covered Button 6 Rows Visor Stitching Matching Undervisor Available In The Following Colors: Blue - Red - White - Grey Includes 1 Color Print 0055 Group F - Caps - Summer - Baseball With Color Combinations Adjustable One Piece Foam Front Panel With Mesh Backing To Include Screen Of Requesting Departmental Logo | 46. 4.37 | 17.48 |

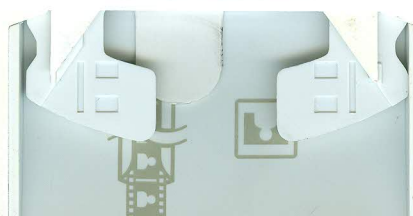


INVITATION TO BID FROM JEFFERSON PARISH - continued

BID NO.: 50-00112924

SEALED BID

| ITEM NUMBER | QUANTITY | U/M | DESCRIPTION OF ARTICLES | UNIT PRICE QUOTED | TOTALS |
|----------------|----------|------|--|----------------------|----------|
| | | | Available In The Following Colors: White And Royal Blue White And Orange White And Navy Includes 1 Color Print | | |
| 47 | 120.00 | ONLY | 0056 Group F - Caps - Summer - Baseball Adjustable One Piece Foam Front Panel With Mesh Backing To Include Screen Of Requesting Departmental Logo Available In The Following Colors: Royal Blue - Navy - Brown - Orange Includes 1 Color Print | 47. 3.48 | 417.60 |
| 48 | 6,525.00 | ONLY | 0057 Group G - Silk Screening 1 Logo 1 Location 1 Color | 48. .47 | 3,066.75 |
| 49 | 450.00 | ONLY | 0058 Group G - Silk Screening 1 Logo 1 Location 2 Or 3 Colors | 49. 1.48 | 666.00 |
| 50 | 2,095.00 | ONLY | 0059 Group G - Silk Screening 1 Logo 1 Location 4 Colors | 50. 1.36 | 2,849.20 |
| 51 | 1.00 | ONLY | 0060 Group G - Silk Screening Cost Per Additional Location Of Logo 1 Color | 51. .41 | .41 |
| 52 | 1.00 | ONLY | 0061 Group G - Silk Screening Cost Per Additional Location Of Logo 2 Or 3 Colors | 52. 1.12 | 1.12 |
| 53 | 1.00 | ONLY | 0062 Group G - Silk Screening Cost Per Additional Location Of Logo 4 Colors | 53. 1.24 | 1.24 |
| 54 | 10.00 | ONLY | 0063 Group G - Silk Screening Single Digit, 6 Inch Number, 1 Location | 54. .89 | 8.90 |

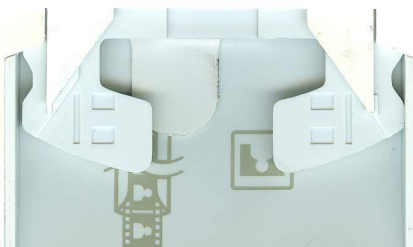


INVITATION TO BID FROM JEFFERSON PARISH - continued

BID NO.: 50-00112924

SEALED BID

| ITEM NUMBER | QUANTITY | U/M | DESCRIPTION OF ARTICLES | UNIT PRICE QUOTED | TOTALS |
|--|----------|------|---|----------------------|--------|
| 55 | 1.00 | ONLY | 0064 Group G - Silk Screening Single Digit, 6 Inch Number, 2 Locations | 55. 1.77 | 1.77 |
| 56 | 1.00 | ONLY | 0065 Group G - Silk Screening Double Digit, 6 Inch Number, 1 Location | 56. 1.77 | 1.77 |
| 57 | 1.00 | ONLY | 0066 Group G - Silk Screening Double Digit, 6 Inch Number, 2 Locations | 57. 3.54 | 3.54 |
| 58 | 255.00 | ONLY | 0067 Group G - Silk Screening Single Digit, 8 Inch Number, 1 Location | 58. .94 | 239.70 |
| 59 | 1.00 | ONLY | 0068 Group G - Silk Screening Single Digit, 8 Inch Number, 2 Locations | 59. 1.89 | 1.89 |
| 60 | 350.00 | ONLY | 0069 Group G - Silk Screening Double Digit, 8 Inch Number, 1 Location | 60. .94 | 329.00 |
| 61 | 45.00 | ONLY | 0070 Group G - Silk Screening Double Digit, 8 Inch Number, 2 Locations | 61. 3.78 | 170.10 |
| <p>*****</p> <p>NOTE: THIS BID IS FOR A TWO-YEAR SUPPLY OF TEE SHIRTS TO BE ORDERED ON AN AS-NEEDED BASIS AND USED BY ALL DEPARTMENTS AND AGENCIES WITHIN JEFFERSON PARISH. QUANTITIES FOR THIS BID ARE ESTIMATES BASED ON PREVIOUS USAGE AND ACCOUNTING FOR UPCOMING PROJECTS/DEMAND WITHIN JEFFERSON PARISH.</p> <p>Deliveries Will Have To Be Made To Various Parish Departments East Bank And West Bank.</p> <p>Imprint On All Shirts Must Be Silk Screened With Selected Logos Of Various Colors For Use In Particular Programs Or Departments.</p> <p>All Artwork And Screens Are To Be Quoted As A Separate Price Based On Number Of Colors.</p> <p>Artwork Will Be Provided To Vendor Upon Ordering Of Shirts For The Particular</p> | | | | | |

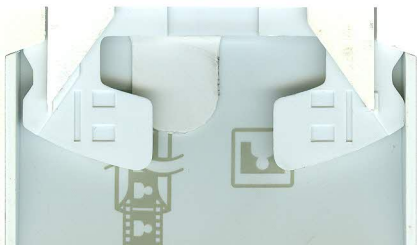


INVITATION TO BID FROM JEFFERSON PARISH - continued

BID NO.: 50-00112924

SEALED BID

| ITEM NUMBER | QUANTITY | U/M | DESCRIPTION OF ARTICLES | UNIT PRICE QUOTED | TOTALS |
|----------------|----------|-----|--|----------------------|--------|
| | | | <p>Program Involved.</p> <p>Delivery Time 2 To 3 Weeks</p> | | |



Bid Number 50-00112924

Non-Public Works Bid

AFFIDAVIT

STATE OF TEXAS

PARISH/COUNTY OF Harris

BEFORE ME, the undersigned authority, personally came and appeared: Robert
TIGERINA, (Affiant) who after being by me duly sworn, deposed and said that
he/she is the fully authorized Office Agent of Logo Dynamics (Entity),
the party who submitted a bid in response to Bid Number 50-001129²⁴, to the Parish of
Jefferson.

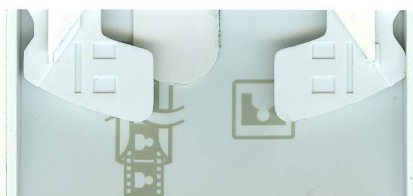
Affiant further said:

Campaign Contribution Disclosures

(Choose A or B, if option A is indicated please include the required
attachment):

Choice A _____ Attached hereto is a list of all campaign contributions, including
the date and amount of each contribution, made to current or
former elected officials of the Parish of Jefferson by Entity,
Affiant, and/or officers, directors and owners, including
employees, owning 25% or more of the Entity during the two-year
period immediately preceding the date of this affidavit or the
current term of the elected official, whichever is greater. Further,
Entity, Affiant, and/or Entity Owners have not made any
contributions to or in support of current or former members of the
Jefferson Parish Council or the Jefferson Parish President through
or in the name of another person or legal entity, either directly or
indirectly.

Choice B X there are NO campaign contributions made which would require
disclosure under Choice A of this section.



Debt Disclosures

(Choose A or B, if option A is indicated please include the required attachment):

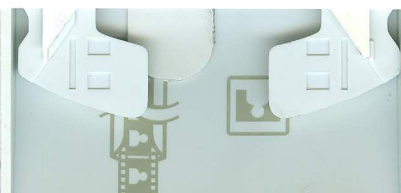
Choice A _____ Attached hereto is a list of all debts owed by the affiant to any elected or appointed official of the Parish of Jefferson, and any and all debts owed by any elected or appointed official of the Parish to the Affiant.

Choice B X There are **NO** debts which would require disclosure under Choice A of this section.

Affiant further said:

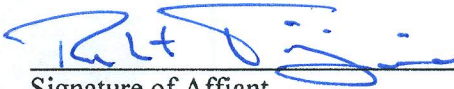
That Affiant has employed no person, corporation, firm, association, or other organization, either directly or indirectly, to secure the public contract under which he received payment, other than persons regularly employed by the Affiant whose services in connection with the construction, alteration or demolition of the public building or project or in securing the public contract were in the regular course of their duties for Affiant; and

[The remainder of this page is intentionally left blank.]



Bid Number 50-00112924

That no part of the contract price received by Affiant was paid or will be paid to any person, corporation, firm, association, or other organization for soliciting the contract, other than the payment of their normal compensation to persons regularly employed by the Affiant whose services in connection with the construction, alteration or demolition of the public building or project were in the regular course of their duties for Affiant.



Signature of Affiant



Printed Name of Affiant

SWORN AND SUBSCRIBED TO BEFORE ME

ON THE 30 DAY OF APRIL, 2015.

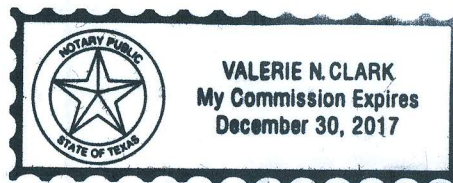


Notary Public



Printed Name of Notary

Notary/Bar Roll Number



My commission expires 12/30/2017.

INSURANCE REQUIREMENTS - BIDS

All insurance requirements shall conform to Jefferson Parish Resolution No. 113646 or No. 113647. The contractor shall not commence work under this contract until he has obtained all insurance and complied with the requirements of the specifications and said Parish Resolutions. Except as otherwise provided by law, the Parish Attorney's Office with the concurrence of the Director of Risk Management is authorized to omit in whole or part the insurance requirements of this section in connection with contracts. Vendors inquiring about this shall submit his written request to the Purchasing Department prior to the due date of the bid. Contractor must deliver and maintain such insurances as provided; failure to do so shall be grounds for suspension, discontinuation or termination of the contract.

Successful bidder will be required to procure standard insurance policies evidencing Parish mandated insurance requirements indicated below. The current certificate of insurance must be submitted by low bidder within 10 days after bid opening to the Purchasing Department. Failure to comply will cause bid to be rejected.

1. WORKER'S COMPENSATION INSURANCE

As required by Louisiana State Statute, exception; Employer's Liability, Section B shall be \$1,000,000 per occurrence when Work is to be over water and involves maritime exposures to cover all employees not covered under the State Worker's Compensation Act, otherwise this limit shall be no less than \$500,000 per occurrence.

2. COMMERCIAL GENERAL LIABILITY

Shall provide limits not less than the following: \$1,000,000.00 Combined Single Limit per Occurrence for bodily injury and property damage.

3. COMPREHENSIVE AUTOMOBILE LIABILITY

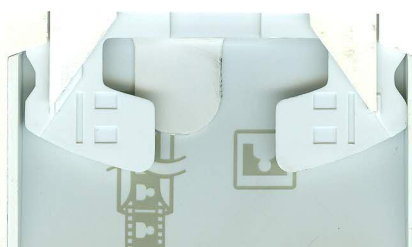
Bodily injury liability \$1,000,000.00 each person; \$1,000,000.00 each occurrence.
Property Damage Liability \$1,000,000.00 each occurrence.

DEDUCTIBLES

No insurance required shall include a deductible not greater than \$10,000.00. The cost of the deductible shall be borne by the contractor.

NOTE: If the vendor requires a change in deductibles, the request must be submitted in writing to the Purchasing Department prior to the due date of the bid. Such request shall be reviewed by the Parish Attorney's Office.

UMBRELLA LIABILITY COVERAGE



An umbrella policy or excess may be used to meet minimum requirements.

CONSTRUCTION AND RENOVATION PROJECTS:

Unless otherwise specified in the bid, these additional insurance is required. Such insurance is due upon contract execution.

OWNER'S PROTECTIVE LIABILITY

To be for the same limits of liability for bodily injury and property damage liability established for commercial general liability.

BUILDER'S RISK INSURANCE

The contractor shall maintain Builder's Risk Insurance at his own expense to insure both the owner (Parish of Jefferson) and contractor as their interest may appear.

NOTE for CERTIFICATE HOLDER:

All insurance certificates shall list the certificate holder as follows:

"The Parish of Jefferson, its Districts, Departments and Agencies under the direction of the Parish President and the Parish Council." Additionally, the address on the Certificates should reflect the department which is letting the bid and reference the respective bid number.

Revised 2.10.2014

