

## 200 PSI Butterfly Valves

Ductile Iron Body • Extended Neck • Geometric Drive • Molded-In Seat Liner • Lug and Wafer Style

Sizes 2" through 12"

Install between Std. ASME Class 125/150 flanges.

Lug Style 200 PSI bi-directional dead end service rating without a downstream flange required.

THIRD PARTY CERTIFIED BY QAI TO MEET MSS SP-67 STANDARD • U.S. COAST GUARD "CATEGORY A" • CERTIFIED LEAD-FREE\* BY TRUESDAIL LABS TO ANSI 372



NSF/ANSI 372

### MATERIAL LIST

PART	SPECIFICATION
1. Stem	Stainless Steel ASTM A582 Type 416
2. Collar Bushing	Brass ASTM B16
3. Stem Seal	Buna-N Rubber Nitrile
4. Body Seal	Buna-N Rubber Nitrile
5. Nameplate	Aluminum
6. Upper Bushing	Copper CDA 122
7. Liner	Buna-N Rubber Nitrile
8. Disc	Alum. Brz. ASTM B148 Alloy 954/955
9. Lower Bushing	Copper CDA 122
10. Body Wafer	Ductile Iron ASTM A536
11. Body Lug	Ductile Iron ASTM A536

### DIMENSIONS — WEIGHTS

Size												
In.	mm.	A	B	C	D	E	F	G Flat	Metal H	Rubber I	J Square	N Dia.
2	50	2.53	4.00	1.25	5.38	2.88	.38	.312	1.688	1.812	3.25	.500
2 1/2	65	2.90	4.69	1.25	5.88	3.27	.38	.370	1.812	1.938	3.25	.562
3	80	3.15	5.12	1.25	6.12	3.40	.38	.370	1.812	1.938	3.25	.562
4	100	4.09	6.12	1.25	6.88	4.00	.38	.403	2.062	2.188	3.25	.625
5	125	5.13	7.25	1.25	7.38	4.75	.38	.496	2.188	2.312	3.25	.750
6	150	6.13	8.25	1.25	8.00	5.29	.38	.496	2.188	2.312	3.25	.750
8	200	8.13	10.41	1.25	9.25	6.50	.50	.560	2.375	2.500	3.25	.875
10	250	10.13	12.52	1.25	10.50	8.00	.50	.686	2.688	2.812	4.75	1.125
12	300	12.13	15.00	1.25	12.00	9.25	.50	.748	3.000	3.125	4.75	1.250

Size		Capscrew/Stud Data					Lug Weight		Wafer Weight	
In.	mm.	O B.C.	P Dia.	R Dia.	K No.	L Dia.	Wafer Length	Lug Length	M B.C.	Lbs. Kg.
2	50	3.25	.437	.437	4	5/8-11unc			4 3/4	7 3.2 5.5 2.5
2 1/2	65	3.25	.437	.500	4	5/8-11unc			5 1/2	9 4.1 7.5 3.4
3	80	3.25	.437	.500	4	5/8-11unc			6	9.5 4.3 8 3.6
4	100	3.25	.437	.562	8	5/8-11unc			7 1/2	15 6.8 11 5.0
5	125	3.25	.437	.656	8	3/4-10unc			8 1/2	21 9.5 15 6.8
6	150	3.25	.437	.656	8	3/4-10unc			9 1/2	24 10.9 18 8.2
8	200	3.25	.437	.781	8	3/4-10unc			11 3/4	34 15.4 28 12.7
10	250	5.00	.562	1.000	12	7/8-9unc			14 1/4	62 28.1 45.5 20.7
12	300	5.00	.562	1.062	12	7/8-9unc			17	90 40.9 70 31.8

For actuated service where a lower torque is required use NIBCO Fig. No. WDLXXX-0 or LDLXXX-0 series, sizes 2" thru 12" only. Maximum pressure rating of 100 PSI for wet application and 50 PSI for dry application

\*Weighted average lead content ≤ 0.25%



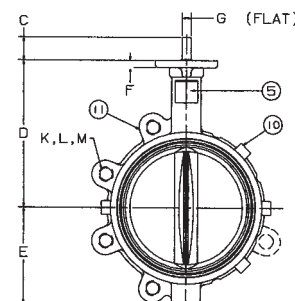
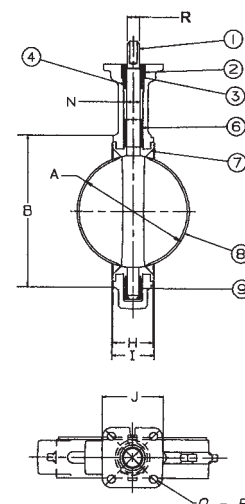
**WD-2100**

Wafer Style  
Buna-N Liner  
and Aluminum  
Bronze Disc



**LD-2100**

Lug Style  
Buna-N Liner  
and Aluminum  
Bronze Disc



NOT RECOMMENDED  
FOR STEAM SERVICE

Visit our website for the most current information.