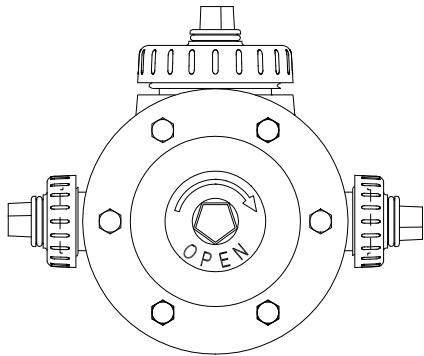


AWWA GUARDIAN HYDRANT

KENNEDY VALVE

Division of McWane, Inc



TWO HOSE & ONE STEAMER SHOWN,
TWO HOSE at 90 deg and OTHER CONFIGURATIONS AVAILABLE

ACCESSORIES
ORDER BY HYDRANT SIZE

EXTENSION
KIT K8150

SEAT
REMOVING
WRENCH K8147

NOZZLE REMOVING
TOOLS K8148
ORDER BY NOZZLE I.D.

COLLISION
REPAIR KIT
K8149

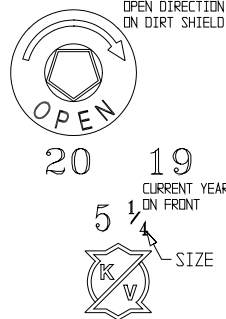
REQUIRED NUTS, BOLTS & GASKETS INCLUDED WITH KIT

PARTS LIST

DETAIL	PART	MATERIAL	ASTM SPEC (or as stated)
K8101	ALEMITE FITTING	STAINLESS STEEL	A276 (304)
† K8102	OPERATING STEM NUT	BRONZE	B584 C87850
K8103	DIRT SHIELD	CAST IRON	A126 CLASS B
K8104	STEM LOCK NUT	BRONZE	B584 C87850
† K8105	O-RING	BUNA-N (SYN. RUBBER)	D2000
† K8106	THRUST WASHER	NYLATRON GS	MIL LP-410
K8107	HYDRANT CAP	CAST IRON	A126 CLASS B
K8108	CAP BOLTS & NUTS	STAINLESS STEEL	316SS
† K8109	CAP SEAL	RUBBER	D2000
* K8110	----	----	----
† K8111	O-RING	BUNA-N (SYN. RUBBER)	D2000
* K8112	----	----	----
s K8113	TOP STOP	BRONZE	ECO BRASS B371 69300
K8114	UPPER STEM	STAINLESS STEEL	A276 (304)
K8115	UPPER BARREL	CAST IRON	A126 CLASS B
K8116	STEM BREAKING COUPLING	CAST IRON	A126 CLASS B
K8118	BOLTS & NUTS	STAINLESS STEEL	316SS
K8119	BREAKING RING	CAST IRON	A126 CLASS B
K8120	O-RING	BUNA-N (SYN. RUBBER)	D2000
K8122R	COUPLING PINS	STAINLESS STEEL	302HQ DR 410SS
K8123	LOWER STEM	STAINLESS STEEL	A276 (304)
K8124	LOWER BARREL	DUCTILE IRON	ANSI/AWWA C151/A21.51
† K8126A	O-RING	BUNA-N (SYN. RUBBER)	D2000
* K8127	----	----	----
† K8128	SEAT RING	BRONZE	B584 C89833 or C87850
K8129	----	----	----
† K8130	O-RING	BUNA-N (SYN. RUBBER)	D2000
† K8131	MAIN VALVE	SBR w/ STEEL INSERT	D2000
s K8132	BOTTOM PLATE	CAST IRON	A126 CLASS B
K8133	DRAIN VALVE PIN	----	----
K8134	----	----	----
K8135	----	----	----
s † K8136	DRAIN VALVE (With Stops)	BRONZE	B584 C89833 or C87850
K8137	DRAIN VALVE FACING w/INSERT	BUNA-N w/STAINLESS STEEL	D2000/A276 (304)
* K8139	NOZZLE CAP CHAIN	STEEL	A108
* K8140	NOZZLE CHAIN BAND	STEEL	A108
† K8141	NOZZLE RETAINING SCREW	STAINLESS STEEL	A276 (304)
# K8142	NOZZLE	BRONZE	B806 C95400 or B584 C89833
# K8143	NOZZLE CAP GASKET	NEOPRENE	D 2000
# K8144	NOZZLE CAP	CAST IRON	A126 CLASS B
† # K8145	O-RING	BUNA-N (SYN. RUBBER)	D2000
K8146	ALLEN HEAD SET SCREW	STAINLESS STEEL	A276 (410)
AW51	ADAPTOR	BRONZE	B584 C89833 or C87850
AW52	GASKET	RUBBER	D2000
AW53	SEAL RING	RUBBER	D2000
AW54	RETAINING SCREW	STAINLESS STEEL (18-8)	COMMERCIAL
† K8147	SEAT REMOVAL WRENCH		
K8148	NOZZLE REMOVAL TOOLS		
† K8149	COLLISION REPAIR KIT		
K8150	GRADE EXTENSION KIT		
M6253	5" B.L. ELBOW	IRON	CAST (GRAY) IRON
M6254	INSERT IN ELBOW	BRONZE	85-5-5-5
M6255	FROST JACKET	PVC INSTALLATION	-
M6256	CASE CAP	IRON	CAST (GRAY IRON)

* Denotes that part is available only as part of an assembly.
Must specify type of Nozzle, Hose or Steamer.
† Recommended spare parts.

NOZZLE ARRANGEMENTS
2 HOSE & 1 STEAMER
2 HOSE at 90°
2 STEAMERS at 90°



KENNEDY
ELMIRA, NY
A W W A
K81-A

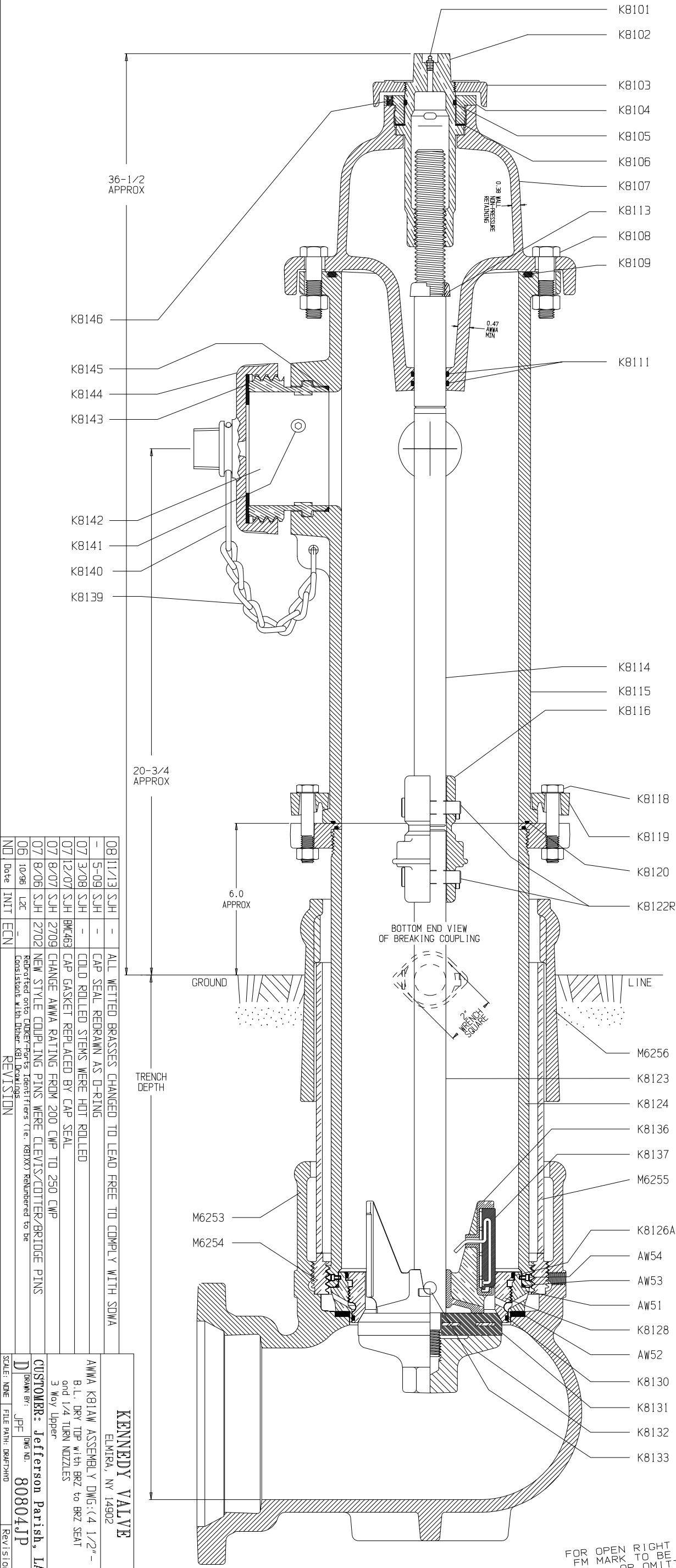
MARKING
FRONT HALF UPPER
OF AWWA ONLY
HYDRANTS

KENNEDY
ELMIRA, NY
A W W A
250 CWP

MARKING
BACK HALF ALL UPPIERS

SPECIFICATIONS

CUSTOMER:	East Jefferson Parish, LA
No TURNS\DIRECTIO	OPEN: 15 1\2-OPEN: RIGHT
CAP & OPERATING NUT SHAPE - SIZE:	Pentagon - 1 1/8"
HOSE NOZZLE THDS:	TWO 2 1/2"
	3.162" X 6 TPI
STEAMER NOZZLE THDS:	ONE - 4 1/2"
	5.442" X 4 TPI
TRENCH DEPTH:	PER ORDER
SIZE & TYPE OF PIPE CONN. to MAIN:	N/A
PAINT:	Aluminum Above Ground Line
OTHER:	304SS UPPER/LOWER STEM/DRAIN PIN
	Bronze Adaptor Retained w/ Set Screws
	STENCIL; "EAST JEFFERSON PARISH"
	TRENCH DEPTH



NO	Date	INIT	ECN	REVISION
08	11/13	SJH	-	ALL WETTED BRASSES CHANGED TO LEAD FREE TO COMPLY WITH SDWA
-	5-09	SJH	-	CAP SEAL REDRAWN AS O-RING
07	3/08	SJH	-	COLD ROLLED STEMS WERE HOT ROLLED
07	12/07	SJH	BK463	CAP GASKET REPLACED BY CAP SEAL
07	8/07	SJH	2709	CHANGE AWWA RATING FROM 200 CWP TO 250 CWP
07	8/06	SJH	2702	NEW STYLE COUPLING PINS WERE CLEVIS/COTTER-BRIDGE PINS
06	10/96	LJC	-	Reprinted onto Clicker Parts Identifiers (i.e. K81XX) Relettered to be Consistent with Other K81 Drawings

SCALE: NONE	FILE PATH: DRW73RD	Revision 08
DRAWN BY: JPE	DWG NO.: 80804JP	
CUSTOMER: Jefferson Parish, LA		
AWWA K81AW ASSEMBLY DWG:(4 1/2" - 5 1/4") B.L. DRY TOP with BRZ to BRZ SEAT and 1/4 TURN NOZZLES 3 Key Upper		
KENNEDY VALVE ELMIRA, NY 14902		