

Jefferson Parish Dept. Of Sewerage **Bid 500123644 Specification Checklist** **16" & 24" Flanged 100% Port Plug Valves**

GENERAL

The valves to be provided for this application shall be Water Technology Resources (WTR Valves) Model PVF16 (16") and PVF24 (24"). The specified valves are suitable for use in water and wastewater installations, where the pumped media can contain fouling or abrasive solids. The proposed valves are Rectangular 100 percent Port Eccentric Plug Valves.

Plug Valves shall be of the Non-Lubricated, Eccentric Type and shall be designed with a working pressure of 150 psi. The valves shall provide tight shut-off at rated pressure.

VALVE BODY

The plug valve body shall be Ductile Iron Grade 65-45-12 Class B with welded-in overlay of at least 95% nickel alloy content on all surfaces contacting the face of the plug.

VALVE PLUG

The 16" & 24" valve plugs shall be ductile iron, Grade 65-45-12, with Buna N resilient seating surface to mate with the body seat.

VALVE FLANGES

Valve flanges shall be manufactured in accordance with ANSI B16.1 Class 125.

VALVE BEARINGS

Plug valve shall be furnished with permanently lubricated sleeve type bearings conforming to AWWA C517. Bearings shall be of sintered, oil impregnated type 316 stainless steel ASTM A-743 Grade CF-8M or bronze ASTM B-127, as required.

VALVE SHAFT SEALS

Valve shaft seals shall be of the "U" cup type, in accordance with AWWA C-517. Seals shall be self-adjusting and re-packable without moving the bonnet from the valve.

August 10, 2018

VALVE ACTUATORS

Valves shall be provided with Worm Gear type manual actuators with Indicator, Operating Nut, and Handwheel. All buried valves shall be provided with above ground Worm and Gear actuators suited for the intended service. Valve actuators shall be fully grease packed and have stops in the open/close position. The actuator shall be able to provide 1.25 times the required operating torque under full rate line pressure combined with a flow velocity of 8 feet per second.

PROTECTIVE COATING

Valves shall be provided with an NSF61 approved High Grade Fusion Bonded Epoxy Resin (FBE).

FACTORY TESTING

Factory Testing shall be provided in accordance with AWWA C517-09 Standards.

WARRANTY

Valves shall have a two (2) year warranty.

VALVE STANDARD

Valves shall be designed and manufactured in accordance with AWWA C517 Standard.

Water Technology Resources (WTR Valves) is a certified SBE/WBE – Woman Owned Enterprise.

Cordially,

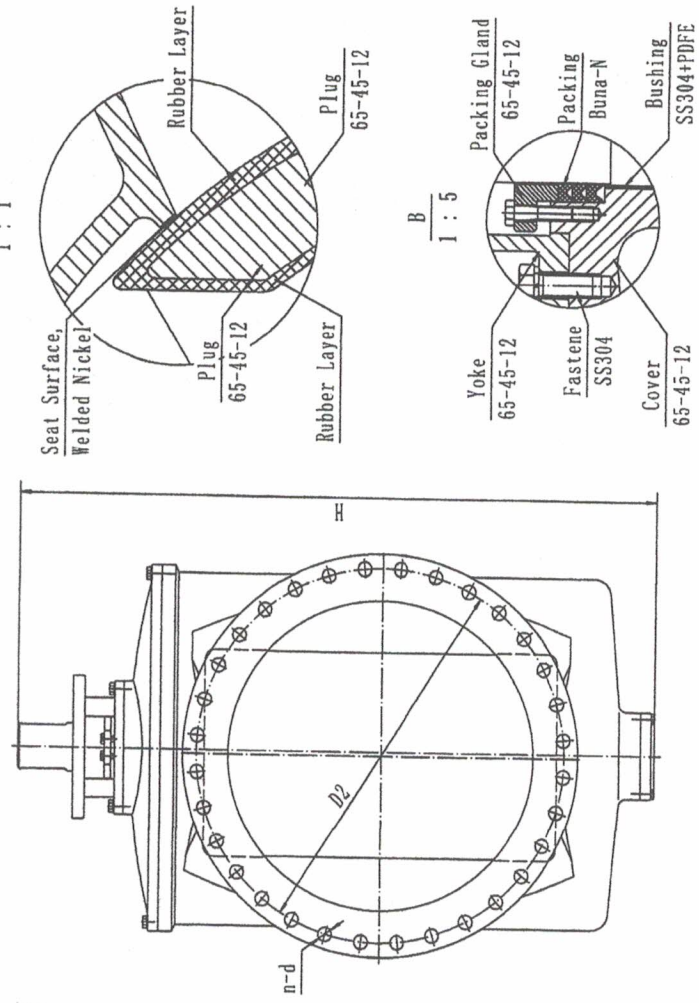
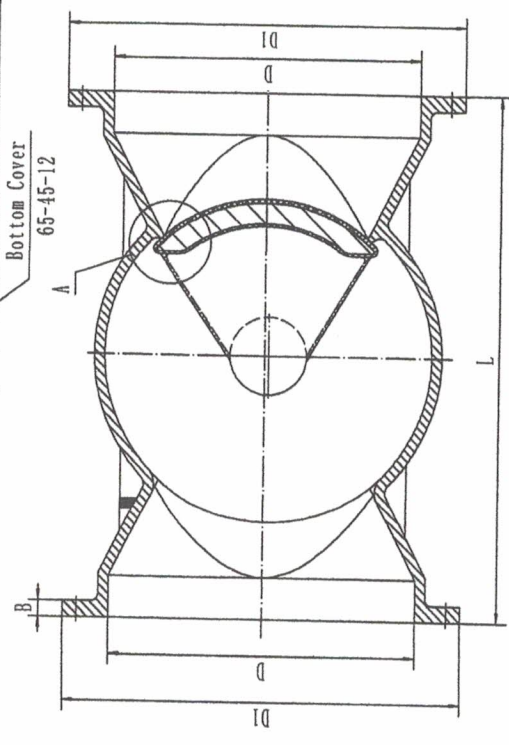
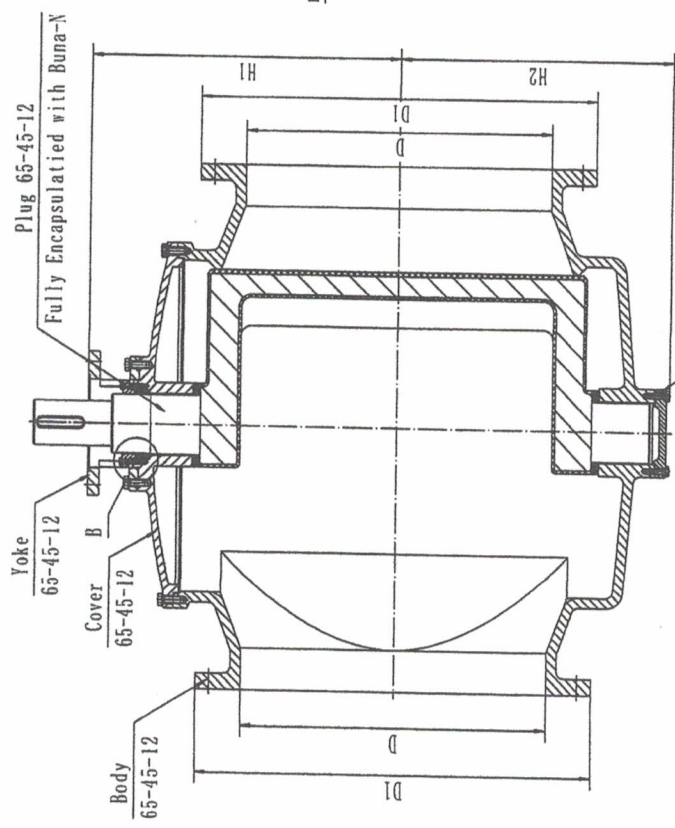
A handwritten signature in red ink, appearing to read 'Matt Waldor', is written over the word 'Cordially,'.

Matt Waldor

WATER TECHNOLOGY RESOURCES

9201 E. Bloomington Fwy, Suite Z
Bloomington, MN 55420
(P) 952-641-9004 (F) 952-885-9173

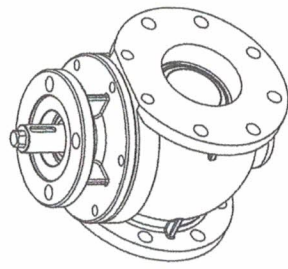
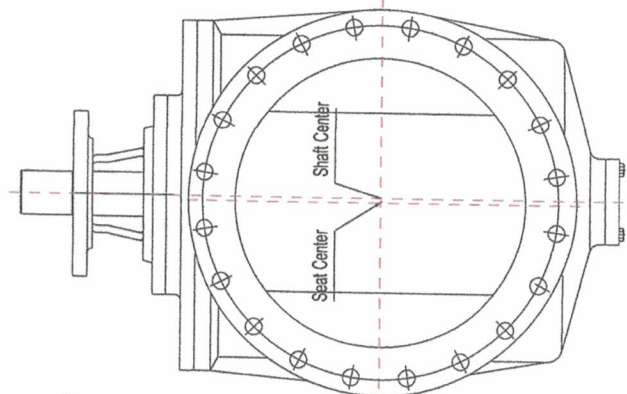
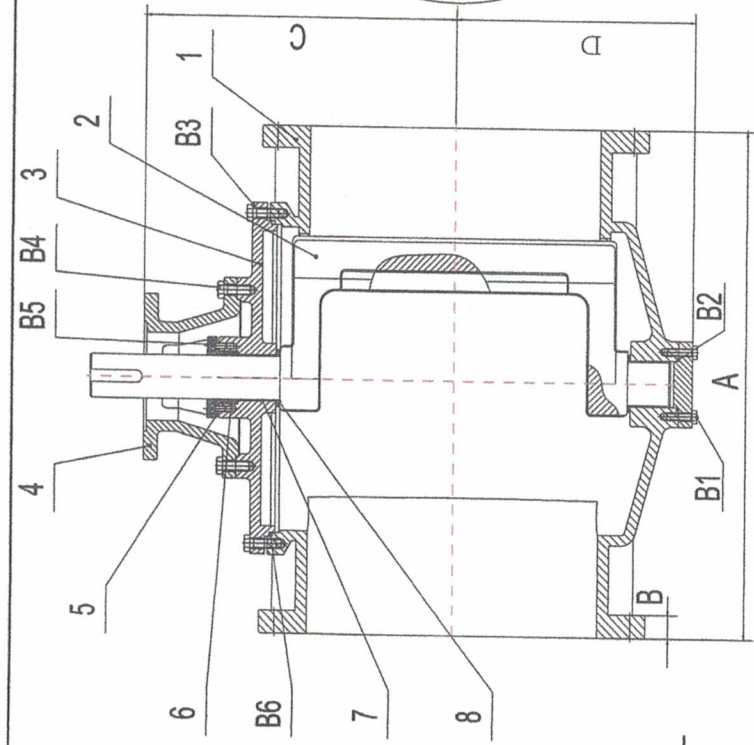
NOTE: DRAWING IS GENERAL: MODIFICATIONS, IF AND AS REQUIRED - SHALL BE PROVIDED



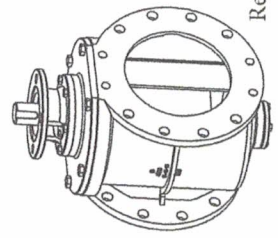
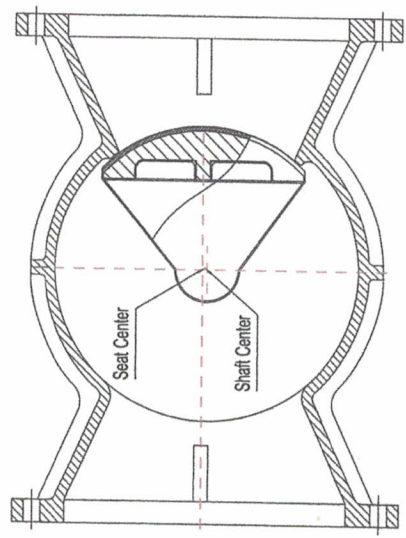
DN	D	D1	D2	n-d	L	B	H	H1	H2
18	18	25.00	22.75	16-1.250	21.50	1.06	40.2	19.7	17.1
20	20	27.50	25.00	20-1.250	23.50	1.12	42.5	21.3	18.4
24	24	32.00	29.50	20-1.375	42.00	1.19	51.7	25.8	22.3
30	30	38.75	36.00	28-1.375	51.00	1.88	59.7	29.5	25.5
36	36	46.00	42.75	32-1.625	60.00	2.38	73.9	35.8	31.9

Water Technology Resources

PROVIDE WITH HANDWHEEL AND SEPARATE 2" OPERATING NOT INDICATOR



Round Port Available up to 6"



Rectangular Port Available up to 72"

Dimensions (inch)					
Size	A		B		D
	Flange	MJ	Flange	MJ	
3	8	11.5	0.83	2.45	3.54
4	9	14.25	0.67	2.45	4.45
6	10.5	15.75	0.75	2.45	6.5
8	11.5	17.37	0.79	2.45	8.22
10	13	19.37	0.87	2.45	10.27
12	14	20.75	0.91	2.45	11.65
14	17	24.5	0.98	3.5	13
16	17.75	27.25	1.06	3.5	14.3
18	21.5	29.25	1.1	3.5	15.7
20	23.5	31	1.18	3.5	17.2
24	42	42	1.85	3.5	18

Bill of Material	
Item	Description
1	Body
2	Plug
3	Cover
4	Yoke
5	Packing Gland
6	Packing
7	Bushing
8	Gasket
B1	Hex Bolt
B2	O ring
B3	Hex Bolt
B4	Hex Bolt
B5	Inner Hex Bolt
B6	O ring
Material	
Ductile Iron ASTM A536 Grade 65-45-12	
Ductile Iron ASTM A536 Grade 65-45-12 + Buna-N	
Ductile Iron ASTM A536 Grade 65-45-12	
Ductile Iron ASTM A536 Grade 65-45-12	
Ductile Iron ASTM A536 Grade 65-45-12	
Ductile Iron ASTM A536 Grade 65-45-12	
EPDM	
Nylon + PTFE	
PTFE	
Stainless Steel Type 304	
EPDM	
Stainless Steel Type 304	
Stainless Steel Type 304	
Stainless Steel Type 304	
EPDM	

Note: Other materials are available upon request.

Flange to ANSI B16.1 Class 125
MJ to ANSI/AWWA C111/A21.11
Plug fully encapsulated with EPDM/NBR
Full Port Flow Area
Design Conform to AWWA C517
Coating conform to AWWA C550
Seat test up to 400psi zero leakage

AWWA C517 Full Port Eccentric Plug Valves

