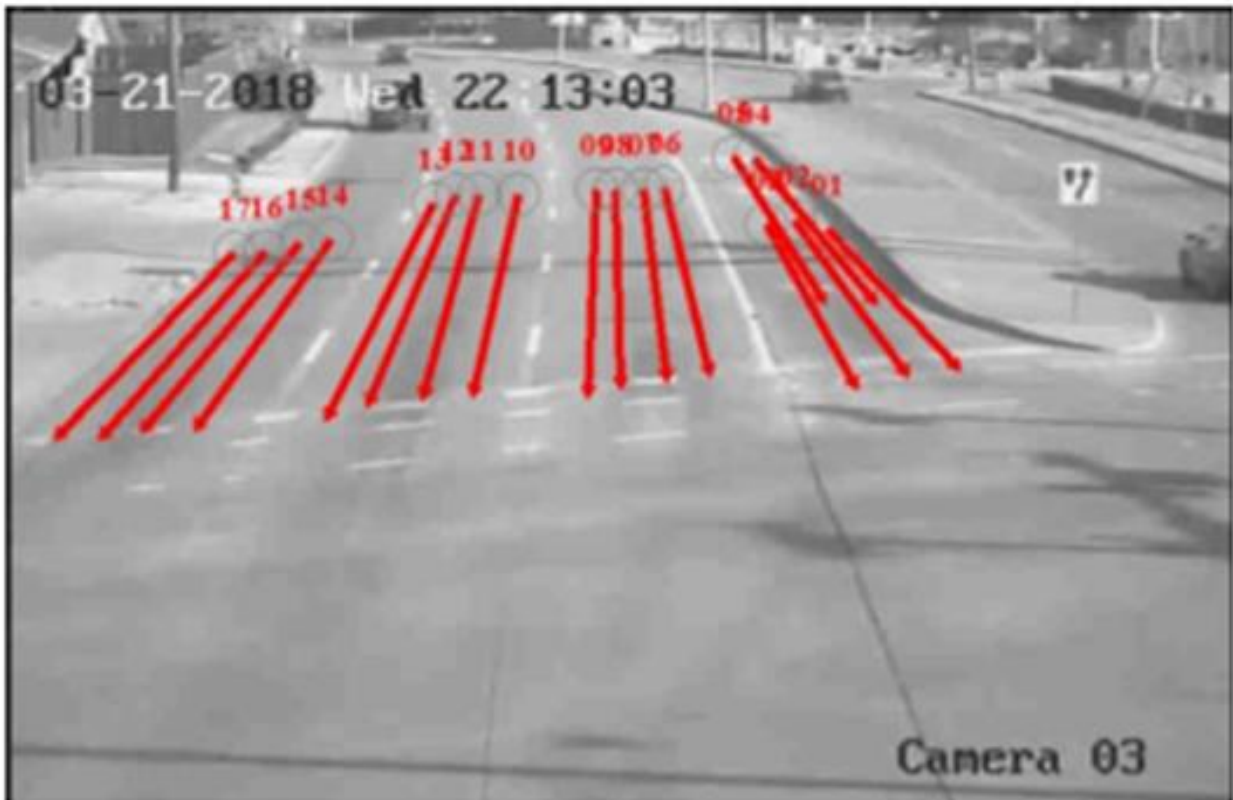


Drawing Lines for Optimum Performance



Does your image look like this? If not, follow these simple instructions:

Center the camera between the Left and Thru lanes

Point the camera below the horizon

Draw 3-5 lines per lane in Thru Lanes

Draw lines over where the headlights will fall

Draw 5-7 lines in Left Hand Turn Lanes with at least 2 of those lines stacked 1 car length back

Draw lines 1 ½ to 2 car lengths long of 1/3rd the height of the screen (whichever is longer)

Minimize drawing over prominent road markings (especially if using mask)

Examples of bad camera angles and lines:

