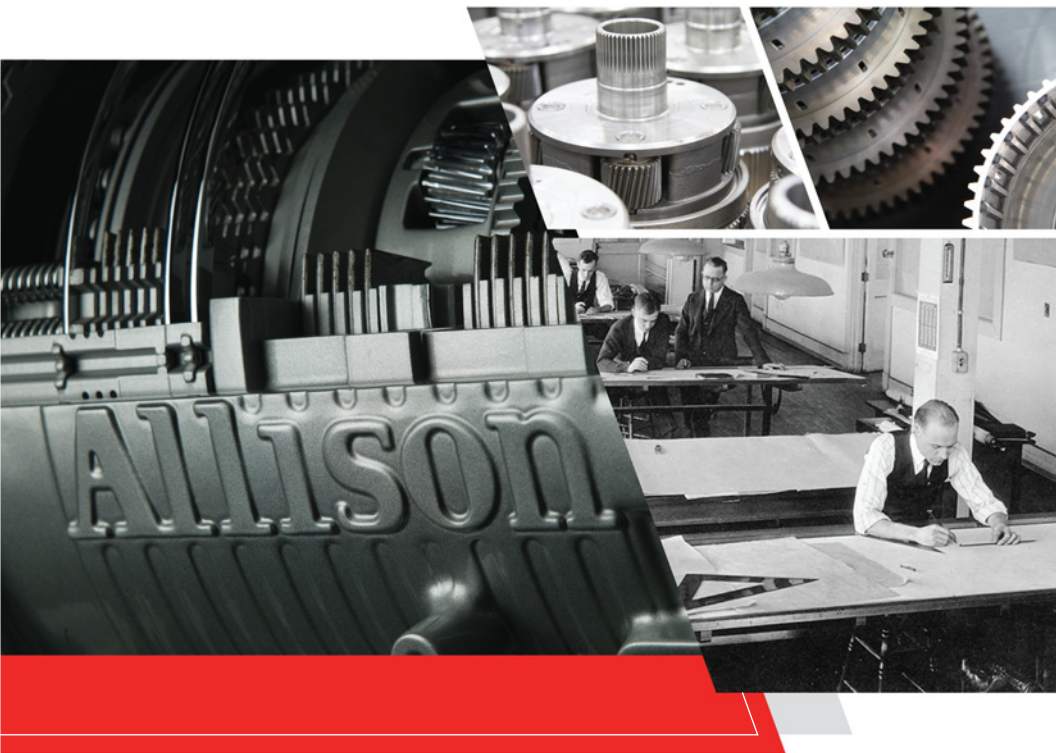


On-Highway Vehicle Applications



WARRANTY INFORMATION

SE0100EN



Distribution Restricted Per Copyright License Agreement A22020

Warranty Information

2021 AUGUST

SE0100EN

Allison Transmission

For Transmissions Used in On-Highway
Applications

IMPORTANT

This booklet contains warranty information for Allison On-Highway Products. It provides the starting dates and mileage (same as vehicle delivery date and mileage) of each transmission warranty.

Keep it with the vehicle and make it available to any authorized Allison Transmission distributor or service dealer if warranty work is required.

On-Highway Products used in Off-Highway applications will carry different warranty terms and conditions. Refer to the Off-Highway warranty information booklet, publication SE0102EN.



Allison Transmission, Inc.
P.O. Box 894 Indianapolis, Indiana 46206-0894
allisontransmission.com

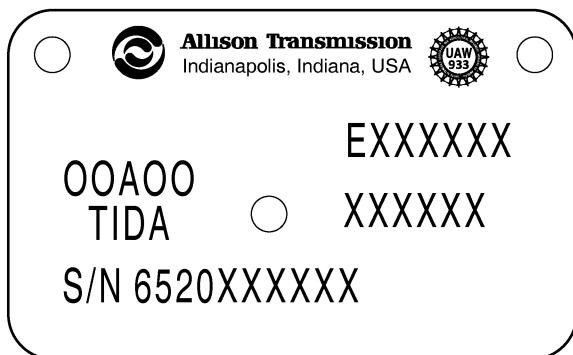
TABLE OF CONTENTS

INTRODUCTION	4
LIMITED WARRANTY ON NEW ALLISON TRANSMISSIONS USED IN ON-HIGHWAY VEHICLE APPLICATIONS	5
TERMS OF COVERAGE	5
Uses	5
Repairs Covered	5
Towing	5
Maintenance Services	5
Production Change	5
Warranty Repair Order	6
Warranty Coverage	6
On-Highway Limited Warranty for New Products	6
Obtaining Repairs	15
Unit Removal and Reinstallation	15
Warranty Period	15
WARRANTY DOES NOT COVER	16
Damage Due To Accident, Misuse, or Alteration	16
Chassis, Body, and Components	16
Damage Caused by Lack of Maintenance or by the Use of Fluids not Recommended in the Operator's Manual	16
Maintenance	17
Repairs by Unauthorized Service Outlets	17
Use of Other Than Genuine Allison Transmission Parts	17
Extra Expenses	17
Sanctioned, Denied, Prohibited or Blocked Party Ownership	17
Other Terms Applicable to Consumers as Defined by the Magnuson-Moss Warranty Act	17
Questions	18
EXTENDED TRANSMISSION COVERAGE	19
ETC Eligibility	19
ETC Agreement	19
ETC Coverage	20
ETC Coverage Prices	20
CUSTOMER SERVICE & TECHNICAL INFORMATION	21

INTRODUCTION

This booklet contains warranty information applicable to the transmission you have purchased. There are instances that require information located on the transmission nameplate.

Shown here is a transmission nameplate which contains a sample serial number and model number.



23800

On or After July, 2005

The nameplate is located on the right side of the transmission as viewed from the rear of the transmission.

Please visit the Allison HUB™ at <https://hub.allisontransmission.com> for service and technical information for Allison Transmission products.

To find out more information about your transmission, including vocation and model, please access the Warranty Status Check tool on the Allison HUB™. The Warranty Status Check tool is found in the "Warranty" drop-down menu on the Hub landing page. Enter the transmission serial number in the search box.



NOTE: The Warranty Status Check tool is available to check for coverage on a transmission based on serial number. Results shown are for serial numbers registered with Allison Transmission, or for transmissions registered with added Extended Transmission Coverage. Please contact your local Allison distributor for further assistance in determining warranty coverage if coverage information is not found through this tool.

LIMITED WARRANTY ON NEW ALLISON TRANSMISSIONS USED IN ON-HIGHWAY VEHICLE APPLICATIONS

TERMS OF COVERAGE

Uses

This warranty is for new Allison Transmission models used in On-highway vehicle applications and is provided to the original and any subsequent owner(s) of the vehicle during the warranty period. Warranty terms vary depending on the vocational model and/or vehicle application as referred to in [Table 1. Vocational Model Series](#).

Repairs Covered

The warranty covers repairs or replacement, at Allison Transmission's option, to correct any unit malfunction resulting from defects in materials or workmanship occurring during the warranty period. Necessary repairs or replacements will be performed using the method Allison Transmission determines most appropriate under the circumstances. Allison remanufactured parts and/or units may be used for the warranty repairs or replacements.

Towing

Towing is covered to the nearest Allison Authorized Distributor or Allison Authorized Dealer only when necessary to prevent further damage to your unit.

Maintenance Services

Proper maintenance and care of the unit will help achieve lower overall operating costs. Use of recommended lubricants and regular maintenance performed by competent service personnel will help avoid conditions arising from neglect which are not covered by Allison Transmission new product warranties.

The maintenance services described in the applicable Driver's Handbook, Owner's/Operator's Manual, or Owner's/Driver's Guide should be performed by an authorized Allison Transmission service outlet or any qualified service outlet at the time and/or mileage intervals stated.

Production Change

Allison Transmission reserves the right to make changes(s) in design or add improvement(s) to the products at any time without incurring any obligations

to install same on products previously purchased. Authorized service outlets reserve a similar right.

Warranty Repair Order

For the owner’s records, the authorized service outlet will provide a copy of the warranty repair order listing all warranty repairs performed.

Warranty Coverage

The warranty period for all coverages is set forth in the schedule shown in [Table 1. Vocational Model Series](#).

On-Highway Limited Warranty for New Products

Table 1. Vocational Model Series

Bus Series™

Transit bus applications require the use of the Bus Series models. (Intercity/Tour Coach, Transit Bus, Other Bus)

Applicable Models	Effective Date	Warranty Period (Whichever occurs first)		Allison Coverage	
		Standard Limited Warranty	Miles/ Hours Limit	Parts	Labor
B 210, B 210 xFE™, B 210 xFE™, B 220, B 295, B 300, B 400, B 3400 xFE™	Jan. 1, 2021	2 Years	Unlimited	100%	100%
B 500 (Intercity/Tour Coach)	Jan. 1, 2021	3 Years	Unlimited	100%	100%

Emergency Vehicle Series™ (EVS)

EVS transmissions must be used in emergency vehicles. An emergency vehicle is any vehicle equipped with emergency signaling that allows the vehicle to ignore general traffic laws in emergency situations. Emergency signaling includes a siren, light bar, grill signal or portable light. (Aerial Ladder/platform Fire Truck, Aircraft Rescue and Fire-fighting Vehicle, Ambulance)

Applicable Models	Effective Date	Warranty Period (Whichever occurs first)		Allison Coverage	
		Standard Limited Warranty	Miles/ Hours Limit	Parts	Labor
1000 EVS, 1350 EVS, 1700 EVS*, 1750 EVS*, 2100 EVS, 2200 EVS, 2350 EVS, 2500 EVS, 2550 EVS, 2700 EVS*, 2750 EVS*, 3000 EVS, 3500 EVS, 4000 EVS, 4500 EVS, 4700 EVS, 4800 EVS, 4850 EVS	Jan. 1, 2021	5 Years	Unlimited	100%	100%
*TES 668™ or TES 295® fluid and genuine Allison filters are required for these vocations/models.					

Highway Series™ (HS)

Highway Series™ models should be selected for on-highway straight truck or tractor-trailer applications which do not require a transmission-mounted PTO. (Utility and Other, Pick-up & Delivery and Beverage)

Applicable Models	Effective Date	Warranty Period (Whichever occurs first)		Allison Coverage	
		Standard Limited Warranty	Miles/ Hours Limit	Parts	Labor
1000 HS, 1000 HS xFE™, 1350 HS, 1350 HS xFE™, 2100 HS, 2100 HS xFE™, 2200 HS, 2200 HS xFE™, 2500 HS, 2500 HS xFE™, 2550 HS, 2550 HS xFE™, 3000 HS, 4000 HS, 4500 HS	Jan. 1, 2021	4 Years	Unlimited	100%	100%
1700 HS*, 1750 HS*, 2700 HS*, 2750 HS*	Jan. 1, 2021	5 Years	Unlimited	100%	100%
TC10®	Jan. 1, 2021	5 Years	750,000 Miles	100%	100%
*TES 668™ or TES 295® fluid and genuine Allison filters are required for these vocations/models.					

Hybrid Bus™ Series

The H 40/50 EP™ is a fully automatic, electronically controlled, low emission propulsion system for transit buses and intercity/tour coaches. The models are the H 40 EP and the H 50 EP. Each model incorporates a drive unit, an Energy Storage System (ESS), a Dual Power Inverter Module (DPIM) and a pair of control modules that process information received from system components.

Applicable Models	Effective Date	Warranty Period (Whichever occurs first)		Allison Coverage	
		Standard Limited Warranty	Miles/ Hours Limit	Parts	Labor
H 40 EP, H 50 EP	Jan. 1, 2021	2 Years	Unlimited	100%	100%
H 40 EP CertPlus, H 50 EP CertPlus	Jan. 1, 2021	5 Years	100,000 Miles	100%	100%

International Series

On-Highway transmission models intended for markets outside of North America. Approved vocations include Pick-up & Delivery, For-Hire, Utility, Beverage, Dump, Mixers, Refuse, Agriculture, Specialty, Emergency and School/Shuttle/Transit Bus.

International Series — Agriculture

Models in this series utilize PTO operation. (Farm/Agriculture Truck, Agricultural Spreader or Sprayer, Livestock Truck, Milk Tanker)

Applicable Models	Effective Date	Warranty Period (Whichever occurs first)		Allison Coverage	
		Standard Limited Warranty	Miles/ Hours Limit	Parts	Labor
1000, 1350, 2100, 2200, 2500, 2550, 3000, 3200, 3500, 3700, 4000, 4430, 4440, 4500, 4700, 4800	Jan. 1, 2021	3 Years	2,500 Hours	100%	100%

International Series — Beverage, Pick-up & Delivery, For-Hire

Models in this series are selected for on-highway straight truck or tractor-trailer applications which do not require a transmission-mounted PTO. (Armored Car, Beverage Delivery, Flatbed and Tanker)

Applicable Models	Effective Date	Warranty Period (Whichever occurs first)		Allison Coverage	
		Standard Limited Warranty	Miles/ Hours Limit	Parts	Labor
3000, 3000 R, 3000 xFE™, 3200, 3200 xFE™, 3500, 4000, 4430, 4500	Jan. 1, 2021	2 Years	Unlimited	100%	100%
1000, 1000 xFE™, 1350 xFE™, 2100, 2100 xFE™, 2200, 2200 xFE™, 2500, 2550 xFE™, 3000V	Jan. 1, 2021	3 Years	Unlimited	100%	100%

International Series — Dump Truck, Mixers

Models in this series are for use in Articulated Dump Trucks, Rigid Rear Dump Trucks and Concrete Mixers.

Applicable Models	Effective Date	Warranty Period (Whichever occurs first)		Allison Coverage	
		Standard Limited Warranty	Miles/ Hours Limit	Parts	Labor
3000, 3200, 3000 xFE™, 3200 xFE™, 3500, 4000, 4500, 4700, 4800	Jan. 1, 2021	2 Years	Unlimited	100%	100%

International Series — Dump Truck, Mixers, Refuse Packer, Utility and Other

Models in this series are for use in Articulated Dump Trucks, Rigid Rear Dump Trucks, Concrete Mixer/Pumper, Recycling Trucks, Front/Side/Rear-Load Refuse Vehicles and Utility Trucks.

Applicable Models	Effective Date	Warranty Period (Whichever occurs first)		Allison Coverage	
		Standard Limited Warranty	Miles/ Hours Limit	Parts	Labor
1000, 1000 xFE™, 1350 xFE™, 2100, 2100 xFE™, 2200, 2200 xFE™, 2500, 2550 xFE™, 3000V	Jan. 1, 2021	3 Years	Unlimited	100%	100%

International Series — Emergency

An emergency vehicle is any vehicle equipped with emergency signaling that allows the vehicle to ignore general traffic laws in emergency situations. Emergency signaling includes a siren, light bar, grill signal or portable light. (Aerial Ladder/platform Fire Truck, Aircraft Rescue and Fire-fighting Vehicle, Ambulance)

Applicable Models	Effective Date	Warranty Period (Whichever occurs first)		Allison Coverage	
		Standard Limited Warranty	Miles/ Hours Limit	Parts	Labor
3000, 3200, 3500, 3700	Jan. 1, 2021	2 Years	Unlimited	100%	100%
1000, 1350, 2100, 2200, 2500, 2550	Jan. 1, 2021	3 Years	Unlimited	100%	100%
4000, 4500, 4700, 4800	Jan. 1, 2021	5 Years	Unlimited	100%	100%

International Series — Refuse

Models in this series utilize PTO operation. (Front/Side/Rear Load Refuse Vehicle, Liquid Waste Hauler and Recycling Truck)

Applicable Models	Effective Date	Warranty Period (Whichever occurs first)		Allison Coverage	
		Standard Limited Warranty	Miles/ Hours Limit	Parts	Labor
3000, 3200, 3000 xFE™, 3200 xFE™, 3500, 4000, 4430, 4400, 4500, 4700, 4800, 3000 xFE™, 3200 xFE™	Jan. 1, 2021	2 Years	Unlimited	100%	100%

International Series — School Bus/Shuttle/Transit Bus

Models in this series include church bus, private academy bus, prison bus, work bus, airfield bus, airport shuttle, casino bus, hotel shuttle, intercity bus, rental car shuttle, retirement community shuttle, handicap shuttle, scenic tour bus, tour coach (city and cross country) and college campus bus.

Applicable Models	Effective Date	Warranty Period (Whichever occurs first)		Allison Coverage	
		Standard Limited Warranty	Miles/ Hours Limit	Parts	Labor
3000, 3000 xFE™, 3200 xFE™(School Bus/Transit Bus)	Jan. 1, 2021	2 Years	Unlimited	100%	100%
1000, 2100, 2200, 2500 (Transit Bus)	Jan. 1, 2021	2 Years	Unlimited	100%	100%
1000, 2100, 2200, 2500 (School Bus/Shuttle)	Jan. 1, 2021	3 Years	Unlimited	100%	100%

International Series — Utility & All Others

Models in this series are selected for On-Highway straight truck or tractor-trailer applications which do not require a transmission-mounted PTO. (On-Highway Dump Truck, Street Cleaning Vehicle, Snow Removal Vehicle and Public Utility Vehicle)

Applicable Models	Effective Date	Warranty Period (Whichever occurs first)		Allison Coverage	
		Standard Limited Warranty	Miles/ Hours Limit	Parts	Labor
3000, 3000_R, 3200, 3000 xFE™, 3200 xFE™, 3500, 4000, 4500, 4700, 4800	Jan. 1, 2021	2 Years	Unlimited	100%	100%

Motorhome Series™ (MH)

Motorhome Series™ models are for use in all motor home and travel coach applications, with one exception as noted below. Exception: Class 6-8 Type C motor homes require the use of a TRV (Truck Recreational Vehicle). (Motorhome, Travel Coach, Blood Mobile, Book Mobile, Medical Lab Vehicle)

Applicable Models	Effective Date	Warranty Period (Whichever occurs first)		Allison Coverage	
		Years	Miles/ Hours Limit	Parts	Labor
1000 MH, 1000 MH xFE™, 1350 MH, 1350 MH xFE™, 2100 MH, 2100 MH xFE™, 2200 MH, 2200 MH xFE™, 2350 MH, 2500 MH, 2500 MH xFE™, 2550 MH, 2550 MH xFE™, 3000 MH, 4000 MH	Jan. 1, 2021	5 Years	200,000 Miles	100%	100%
1700 MH*, 1750 MH*, 2700 MH*, 2750 MH*	Jan. 1, 2021	5 Years	Unlimited	100%	100%
*TES 668™ or TES 295® fluid and genuine Allison filters are required for these vocations/models.					

Regional Haul Series™ (RHS)

Regional Haul Series™ model should be selected for on-highway tractor-trailer applications commonly operated in a limited regional geographical area. (Automobile transporter, beverage delivery, food distribution)

Applicable Models	Effective Date	Warranty Period (Whichever occurs first)		Allison Coverage	
		Standard Limited Warranty	Miles/Hours Limit	Parts	Labor
3414 RHS	Jan. 1, 2021	5 Years	750,000 Miles	100%	100%

Rugged Duty Series™ (RDS)

Rugged Duty Series™ models are primarily for use in the construction, services and refuse markets. Any on-highway truck that utilizes PTO operation, or any vehicle that operates in an on/off-highway application requires an RDS model. (Refuse Packer, Pick-up & Delivery and Beverage Utility and Other, Dump Trucks/Mixers)

Applicable Models	Effective Date	Warranty Period (Whichever occurs first)		Allison Coverage	
		Standard Limited Warranty	Miles/Hours Limit	Parts	Labor
1000 RDS, 1000 RDS xFE™, 1350 RDS, 1350 RDS xFE™, 2100 RDS, 2100 RDS xFE™, 2200 RDS, 2200 RDS xFE™, 2300 RDS, 2350 RDS, 2350 RDS xFE™, 2500 RDS, 2500 RDS xFE™, 2550 RDS, 2550 RDS xFE™, 3000 RDS, 3500 RDS, 4000 RDS, 4500 RDS, 4700 RDS	Jan. 1, 2021	3 Years	Unlimited	100%	100%
1700 RDS*, 1750 RDS*, 2700 RDS*, 2750 RDS*	Jan. 1, 2021	5 Years	Unlimited	100%	100%

*TES 668™ or TES 295® fluid and genuine Allison filters are required for these vocations/models.

Rugged Duty Series™ (RDS) - Agriculture Applications

Typical agriculture applications include farm/agriculture truck and agricultural spreader or sprayer.

Applicable Models	Effective Date	Warranty Period (Whichever occurs first)		Allison Coverage	
		Standard Limited Warranty	Miles/Hours Limit	Parts	Labor
1000 RDS, 1000 RDS xFE™, 1350 RDS, 1350 RDS xFE™, 2100 RDS, 2100 RDS xFE™, 2200 RDS, 2200 RDS xFE™, 2300 RDS, 2350 RDS, 2350 RDS xFE™, 2500 RDS, 2500 RDS xFE™, 2550 RDS, 2550 RDS xFE™, 3000 RDS, 3500 RDS, 4000 RDS, 4500 RDS, 4700 RDS	Jan. 1, 2021	3 Years	2,500 Hours	100%	100%

School Bus (PTS)

Pupil Transportation Series™ models are for use in school bus (for both school use and nonschool use) applications which do not require a transmission-mounted PTO.

Applicable Models	Effective Date	Warranty Period (Whichever occurs first)		Allison Coverage	
		Standard Limited Warranty	Miles/Hours Limit	Parts	Labor
1000 PTS, 1000 PTS xFE™, 1350 PTS, 1350 PTS xFE™	Jan. 1, 2021	4 Years	Unlimited	100%	100%
1700 PTS*, 1750 PTS*, 2100 PTS, 2100 PTS xFE™, 2200 PTS, 2200 PTS xFE™, 2300 PTS, 2350 PTS, 2350 PTS xFE™, 2500 PTS, 2500 PTS xFE™, 2550 PTS, 2550 PTS xFE™, 2575 PTS, 2700 PTS*, 2750 PTS*, 3000 PTS	Jan. 1, 2021	5 Years	Unlimited	100%	100%
*TES 668™ or TES 295® fluid and genuine Allison filters are required for these vocations/models.					

Shuttle Bus (PTS)

Typical shuttle applications include church bus, private academy bus, prison bus, work bus, airfield bus, airport shuttle, casino bus, hotel shuttle, intercity bus, rental car shuttle, retirement community shuttle, handicap shuttle, scenic tour bus, tour coach (city and cross country) and college campus bus. Some PTS models are not acceptable in shuttle bus applications.

Applicable Models	Effective Date	Warranty Period (Whichever occurs first)		Allison Coverage	
		Standard Limited Warranty	Miles/Hours Limit	Parts	Labor
1000 PTS, 1000 PTS xFE™, 1350 PTS, 1350 PTS xFE™, 2300 PTS, 2350 PTS, 2350 PTS xFE™, 2500 PTS, 2500 PTS xFE™, 2550 PTS, 2550 PTS xFE™	Jan. 1, 2021	3 Years	100,000 Miles	100%	100%
2100 PTS, 2100 PTS xFE™, 2200 PTS, 2200 PTS xFE™, 3000 PTS	Jan. 1, 2021	4 Years	Unlimited	100%	100%
1700 PTS, 1750 PTS, 2700 PTS, 2750 PTS*	Jan. 1, 2021	5 Years	100,000 Miles	100%	100%
*TES 668™ or TES 295® fluid and genuine Allison filters are required for these vocations/models.					

Specialty Series™ (SP)

Specialty Series™ models are designed for use in military, crane carrier, and heavy equipment transporter applications. Exception: the 4430 SP is designated for commercial use only and is not acceptable in military applications. (Military Support, Tactical, Wheeled Combat, Heavy Equipment Transporter, Crane Carrier)

Applicable Models	Effective Date	Warranty Period (Whichever occurs first)		Allison Coverage	
		Standard Limited Warranty	Miles/Hours Limit	Parts	Labor
1000 SP, 1350 SP, 2100 SP, 2200 SP, 2300 SP, 2350 SP, 2500 SP, 2550 SP, 3000 SP, 3200 SP, 3500 SP, 3700 SP, 4000 SP, 4430 SP, 4500 SP, 4700 SP, 4800 SP	Jan. 1, 2021	2 Years	Unlimited	100%	100%

Torqmatic® Series (xFE™)

Torqmatic® Series is a line of fully automatic transmissions specifically designed for the unique demands of city and suburban buses and tour coaches with engine ratings up to 410 kW (550 hp). (Intercity/Tour Coach, Transit Bus, Shuttle & Other Bus)

Applicable Models	Effective Date	Warranty Period (Whichever occurs first)		Allison Coverage	
		Standard Limited Warranty	Miles/ Hours Limit	Parts	Labor
T1000, T1000 xFE™, T2100, T2100 xFE™, T2200, T2200 xFE™, T180, T180 xFE™, T270, T280, T310, T325, T350, T375, T390, T3270 xFE™, T3280 xFE™, T3325 xFE™, T3375 xFE™, T425, T450, T525	Jan. 1, 2021	2 Years	Unlimited	100%	100%

Truck Recreational Vehicle Series

Truck-based Recreational models are for use with 5th wheel tow vehicles and specific types of recreational vehicles built on straight truck chassis.

Applicable Models	Effective Date	Warranty Period (Whichever occurs first)		Allison Coverage	
		Standard Limited Warranty	Miles/ Hours Limit	Parts	Labor
3000 TRV, 3200 TRV, 4000 TRV	Jan. 1, 2021	5 Years	Unlimited	100%	100%

Obtaining Repairs

To obtain warranty repairs, take the vehicle to any Allison Authorized Distributor or Allison Authorized Dealer within a reasonable amount of time and request the needed repairs. Allow a reasonable amount of time for the distributor or dealer to perform necessary repairs.

Unit Removal and Reinstallation

Labor costs for removal and reinstallation of the unit, when necessary to make a warranty repair, are covered by the warranty.

Warranty Period

The warranty period for all coverages shall begin on the date the transmission is delivered to the first retail purchaser, with the following exception:

Demonstration Service—A unit in a new truck or bus may be demonstrated to a total of 5000 miles (8000 kilometers). If the vehicle is within this limit when sold to a retail purchaser, the warranty start date is the date of purchase.

Normal warranty services are applicable to the demonstrating dealer. Should the truck or bus be sold to a retail purchaser after these limits are reached, the warranty period begins on the date the vehicle was first placed in demonstration service and the purchaser is entitled to the remaining warranty.

WARRANTY DOES NOT COVER

Damage Due To Accident, Misuse, or Alteration

Defects and damage caused as the result of any of the following are not covered:

- Flood, collision, fire, theft, freezing, vandalism, riot, explosion, or object striking the vehicle and/or transmission
- Misuse of the vehicle and/or transmission
- Installation into unapproved applications and installations
- Alterations or modifications to the transmission or the vehicle
- Damage resulting from improper storage (refer to long-term storage procedure outlined in the applicable Allison Service Manual)
- Anything other than defects in Allison Transmission material or workmanship.
- This warranty is void on units currently used in vehicles previously titled as salvaged, scrapped, junked, or totaled.

Chassis, Body, and Components

The chassis and body company (assemblers) and other component and equipment manufacturers are solely responsible for warranties on the chassis, body, component(s), equipment and overall integration elements they provide.

Any repair caused by an alteration(s) made to the Allison unit, or the vehicle which allows the unit to be installed or operated outside of the limits defined in the applicable Allison Installation Guideline, is the sole the responsibility of the entity making the alteration(s)

Damage Caused by Lack of Maintenance or by the Use of Fluids not Recommended in the Operator's Manual

Defects and damage caused by any of the following are not covered:

- Failure to follow the maintenance schedule intervals applicable to the unit.
- Use of fluids not approved by Allison Transmission.
- Failure to maintain the fluid levels set forth in the Operator's Manual.

Maintenance

Normal maintenance (such as replacement of filters, screens, and fluid) is not covered and is the owner's responsibility.

Repairs by Unauthorized Service Outlets

Defects and damage caused by a service outlet that is not an Allison Authorized Distributor or Allison Authorized Dealer are not covered.

Use of Other Than Genuine Allison Transmission Parts

Defects and damage caused by the use of parts that are not genuine Allison Transmission parts are not covered.

Extra Expenses

Economic loss and extra expenses are not covered. Examples include but are not limited to:

- Loss of vehicle use
- Inconvenience
- Storage
- Payment for loss of time or pay
- Vehicle rental expense
- Lodging, meals, or other travel expenses

Sanctioned, Denied, Prohibited or Blocked Party Ownership

Warranty repair parts and labor costs are not reimbursed to any participating or non-participating OEMs, dealers, or distributors who perform warranty work for, or on behalf of, end users identified by the United States as being a sanctioned, denied, prohibited or blocked party or who are citizens of sanctioned or embargoed countries as defined by the U.S. Department of Treasury Office of Foreign Assets Control. Furthermore, warranty reimbursements are not guaranteed if the reimbursement would be contrary to any United States export control laws or regulations as defined by the U.S. Department of Commerce, the U.S. Department of State, or the U.S. Department of Treasury.

Other Terms Applicable to Consumers as Defined by the Magnuson-Moss Warranty Act

This warranty gives you specific legal rights and may also have other rights which vary from state to state.

Allison Transmission does not authorize any person to create for it any other obligation or liability in connection with these units.



NOTE: Any implied warranty of merchantability or fitness for a particular purpose applicable to these transmissions is limited in duration to the duration of this written warranty. Performance of repairs and necessary adjustments is the exclusive remedy under this written warranty or any implied warranty. Allison Transmission shall not be liable for incidental, consequential or special damages (such as, but not limited to lost wages or vehicle rental expenses) resulting from breach of this written warranty or any implied warranty.*



NOTE: This warranty is the only warranty applicable to the Allison Transmission models listed in this booklet and is expressly in lieu of any other warranties, expressed or implied, including any implied warranty of merchantability or fitness for a particular purpose. Allison Transmission does not authorize any person to create for it any other obligation or liability in connection with such transmissions. Allison Transmission shall not be liable for incidental, consequential or special damages resulting from breach of this warranty or any implied warranty.

Questions

If you have any questions regarding this warranty or the performance of warranty obligations, you may contact any Allison Authorized Distributor or Allison Authorized Dealer, or write to:

Allison Transmission, Inc.
Attn: Warranty Administration A01
One Allison Way
P.O. Box 894
Indianapolis, IN 46222-3271
warranty@allisontransmission.com

*Some states do not allow limitations on how long an implied warranty will last or the exclusion or limitation of incidental or consequential damages, so the above limitations or exclusions may not apply to you.

EXTENDED TRANSMISSION COVERAGE

ETC Eligibility

Most Allison automatic transmissions purchased at retail for use in on-highway vehicle applications are eligible for extended coverage. ETC may be purchased only within 12 months after delivery of the vehicle to the first retail purchaser.

COVERAGE REQUIREMENTS: Use of TES 668™ or TES 295® Approved Fluids and Genuine Allison Filters is required. Failure to use TES 668™ or TES 295® Approved Fluids and Genuine Allison Filters will result in no coverage for repair beyond Standard Limited Warranty coverage. Transmissions that are not OEM factory filled with Allison Approved TES 668™ or TES 295® transmission fluid and Genuine Allison Filters must have Allison Approved TES 668™ or TES 295® transmission fluid and Genuine Allison Filters installed at the time of Extended Transmission Coverage purchase. Transmissions that are not OEM factory filled with Allison Approved TES 668™ or TES 295® transmission fluid, or transmissions operating with non-TES 668™ or non-TES 295® fluids, must be drained and filled with Allison Approved TES 668™ or TES 295® transmission fluid to achieve 100% concentration. One hundred percent concentration is not achieved until the second consecutive fluid change using Allison Approved TES 668™ or TES 295® transmission fluid. The second consecutive fluid change must be achieved at the time of Extended Transmission Coverage purchase.

ETC Agreement

The ETC for Allison Transmissions extends the coverage period of the standard new product warranty and/or provides that Allison Transmission will pay up to 100 percent of parts and labor expenses for covered repairs, depending on the selected coverage.

The ETC begins at the expiration of the 100 percent parts and labor portion of the standard new product warranty or OEM-specific program coverage, if applicable, and extends to the time specified by the coverage selected. Coverage time is measured from the end of the standard warranty period or OEM-specific program coverage, if applicable.

The ETC for Allison automatic transmissions provides only for conditions resulting from any part covered by the Agreement that fails to perform due to defects in materials or workmanship. Except for the term of the service protection and/or the adjustment charge, the terms, conditions and limitations of the standard new product warranty continue to apply to the ETC coverage.

ETC Coverage

ETC may be available for purchase on your Allison Transmission. You may purchase this additional coverage from any Allison Authorized Distributor or Allison Authorized Dealer Location.

ETC Coverage Prices

The suggested retail price is established for each transmission model/vocational application.

Prices and/or coverage are subject to change without notice.

For current prices and coverage information, consult allisontransmission.com or your Allison Authorized Distributor or Allison Authorized Dealer.

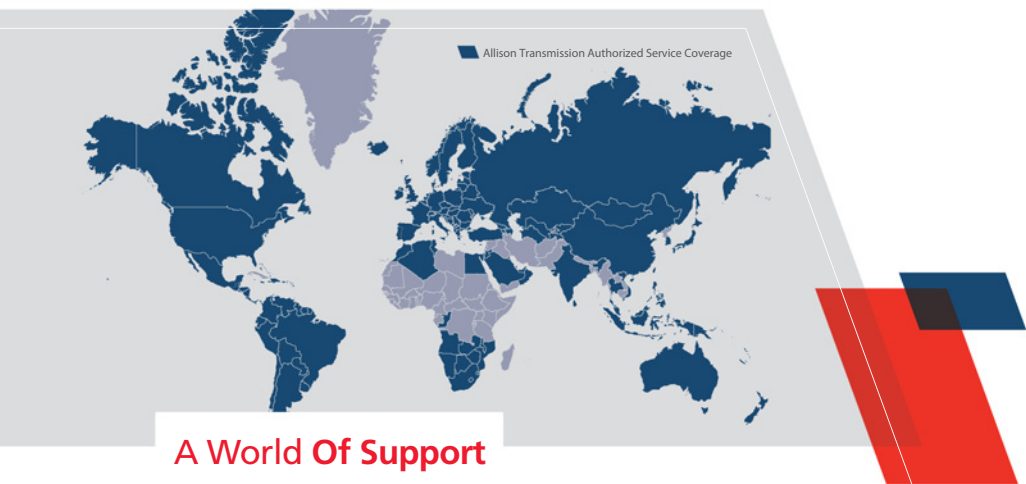
CUSTOMER SERVICE & TECHNICAL INFORMATION

For Owner Assistance, see Operator's Manuals "Customer's Service" section.

Additional service literature is available that provides fully illustrated instructions for the operation, maintenance, service, overhaul and parts support of your unit.

Technical publications may also be ordered on the web by visiting the Allison Transmission publications web site at allisontransmissionpublications.com.

For more information about Allison products please visit allisontransmission.com.



A World Of Support

From our headquarters in Indianapolis, Indiana to our manufacturing plants in Hungary and India, to approximately 1,500 Allison Authorized Distributors and Dealers around the globe, you are never far from the products, training, service and support you demand.

Our support starts from the moment an Allison transmission is specified. We work with you to ensure that the model and ratings fit your engine to create a tailored package of powerful performance and reliable efficiency. And when you need parts or service, you can count on global access to factory-trained specialists and Allison Genuine Parts™.

allisontransmission.com

*One Allison Way
Indianapolis, Indiana USA 46222-3271*

SE0100EN (202108)

*Information or specifications subject to
change without notice or obligation.*

*© 2021 Allison Transmission Inc.
All Rights Reserved.*

allisontransmission.com

