

SUBURBAN 2020



Front cover and below: Suburban Premier
in Satin Steel Metallic with available
features and Chevrolet Accessories.



IN EVERY WAY, IT'S AN AMERICAN ICON.

When adventures await, the legendary Chevrolet Suburban offers more of everything you expect – uncommon spaciousness, commanding V8 performance and ingenious safety technology. The luxury is all-encompassing. The capability is exceptional. With premium features inside and out, Suburban is the ideal vehicle for the modern family that's always looking forward to where the next path will take them.

FIND NEW ROADS™
DEALER ePROCESS

MODELS

LS

Suburban LS offers room and capability without compromise. Choose from 2WD or 4WD versions.

LS will take you everywhere, with seating for up to nine passengers (eight with front bucket seats), tri-zone automatic climate controls and a Chevrolet Infotainment System¹ with an 8-inch diagonal color touch-screen and available built-in 4G LTE Wi-Fi.²

Suburban LS does so much so well. No wonder it is part of America's best-selling family of full-size SUVs.



LT

With SUV versatility and a full measure of thoughtfully designed luxury appointments, Suburban LT is ready for just about anything.

Inside, you'll find heated leather-appointed front bucket seats with power adjustment and power-adjustable pedals with memory. A programmable power liftgate adds convenience.

Standard safety technology includes Forward Collision Alert,³ Automatic Emergency Braking³ and Lane Keep Assist with Lane Departure Warning.³



¹ Chevrolet Infotainment System functionality varies by model. Full functionality requires compatible Bluetooth and smartphone, and USB connectivity for some devices. ² Service varies with conditions and location. Requires active service plan. Data plans offered by AT&T. Visit onstar.com for details and limitations. ³ Read the vehicle Owner's Manual for important feature limitations and information.



MODELS

PREMIER

The quiet excellence of an exceptional SUV awaits in the top-of-the-line Suburban Premier.

Prepare to be impressed by a comprehensive array of active safety technology, plus power-folding outside mirrors and 20-inch polished-aluminum wheels. Magnetic Ride Control™ provides an ultra-smooth ride, and an available 6.2L EcoTec3 V8 engine and a 10-speed automatic transmission add to this stunning performance.

The carefully crafted Premier interior includes heated and ventilated front bucket seats with 12-way power adjusters, heated second-row bucket seats with power release, a heated steering wheel, a power tilt/telescopic steering column and a Bose Centerpoint Surround Sound audio system.



Vehicle shown with available
Chevrolet Accessories.



SPECIAL EDITIONS

LT MIDNIGHT EDITION

It's black on black on bold, ready for the city or wherever you want to take it.

The LT Midnight Edition makes its own powerful statement with exclusive 20-inch Black-painted aluminum wheels, Black roof rack cross rails and Black bowtie emblems.



Z71 OFF-ROAD PACKAGE

Go your own way in Suburban with the available Z71 Off-Road Package. With proven technology, the iconic Z71 takes Suburban capability to the next level.

Z71 includes a tuned Off-Road suspension, 18-inch aluminum wheels with all-terrain tires, skid plates, an Autotrac® 2-speed active transfer case and Hill Descent Control.

A Z71-specific grille, Black tubular assist steps and recovery hooks¹, and Z71 badging identify this specially engineered Suburban. Available on LT 4WD models.



¹ To avoid the risk of injury, never use recovery hooks to tow a vehicle. See the Owner's Manual for more information.

SPECIAL EDITIONS

RST EDITION

It's customized, right from the factory. Suburban RST will get second glances wherever it appears.

RST is instantly recognized by its body-color appearance, Gloss Black accents and exclusive 22-inch aluminum wheels. The available RST 6.2L Performance Edition features a 420-horsepower 6.2L EcoTec3 V8 engine and a 10-speed automatic transmission.



PREMIER PLUS EDITION

From a distinctive exterior to a designer interior, Premier Plus is an artistic triumph.


The premium Mahogany two-tone interior includes a power sunroof, Head-Up Display, Rear-Seat Entertainment System and 12 months of available 4G LTE Wi-Fi.¹ Assertive performance is provided by a 6.2L EcoTec3 V8 engine and 10-speed automatic transmission.

Upscale details include power-retractable assist steps with bright accents and perimeter lighting, a polished exhaust tip and Black roof rack cross rails.



¹ Service varies with conditions and location. Requires active service plan. Data plans offered by AT&T. Visit onstar.com for details and limitations.





Suburban Premier interior
in Jet Black with perforated
leather appointments.

INTERIOR DESIGN

ALL THE ROOM YOU NEED.

Suburban is America's comfortable, connected mobile family room. There's **space for up to nine passengers** in LS with the available front split-bench seat. And the second- and third-row seats fold down, so Suburban is always ready for the next adventure.







CAPABILITY

A PLACE FOR EVERYTHING.

Suburban is prepared for whatever your day might hold. With the second- and third-row seats folded, you'll have up to **121.7 cu. ft. of cargo space!** And with a **hands-free programmable power liftgate** (standard on Premier and available on LT), that space is easy to get to. A sensor under the rear bumper allows you to open the liftgate with a gentle kicking motion with the key fob in range.

Go from passenger space to cargo space in no time at all with available button-activated **power-folding third-row seats**. Plus, the available **power-release second-row seats** provide easy access to the third row. The configurable underfloor **Cargo Management System** offers a hidden, organized space in the rear cargo area.

¹ Cargo and load capacity limited by weight and distribution.





TECHNOLOGY

MAINTAIN YOUR CONNECTIONS.

- Apple CarPlay®¹ compatibility.
- Android Auto™² compatibility.
- Available 4G LTE Wi-Fi®³ provides a fast and reliable connection for up to seven devices.
- SiriusXM®⁴ – Listen to over 150 channels of commercial-free music from every genre with SiriusXM, 24/7, during the trial period.

¹ Vehicle user interface is a product of Apple and its terms and privacy statements apply. Requires compatible iPhone and data plan rates apply. ² Vehicle user interface is a product of Google and its terms and privacy statements apply. Requires the Android Auto app on Google Play and an Android compatible smartphone running Android 5.0 Lollipop or higher. Data plan rates apply. ³ Service varies with conditions and location. Requires active service plan. Data plans offered by AT&T. Visit onstar.com for details and limitations. ⁴ If you decide to continue service after your trial, your selected subscription plan will automatically renew thereafter. You will be charged at then-current rates. Fees and taxes apply. Please see the SiriusXM Customer Agreement at siriusxm.com for complete terms and how to cancel, which includes calling SiriusXM at 1-866-635-2349. All fees and programming are subject to change.

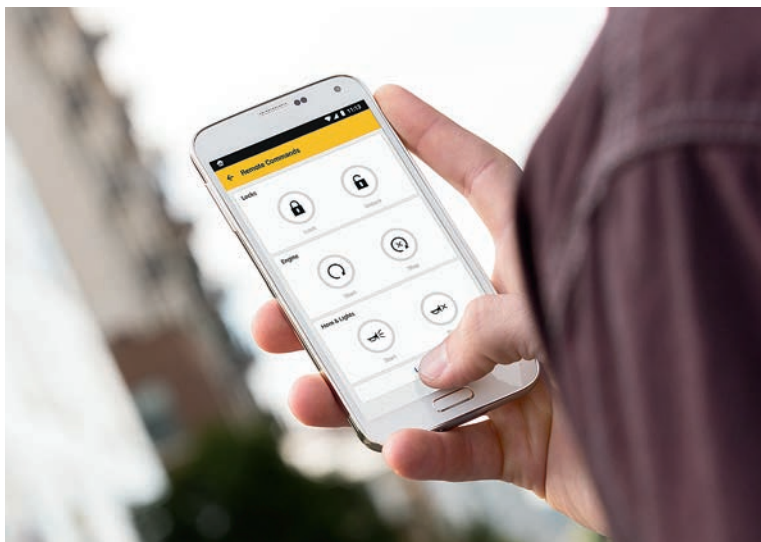
Apple CarPlay and iPhone are trademarks of Apple Inc., registered in the U.S. and other countries. Android Auto is a trademark of Google LLC.

DEALER ePROCESS

Available myChevrolet Mobile App¹; includes remote vehicle start if properly equipped (requires paid plan).

Available color Head-Up Display.

Available Rear-Seat Blu-ray[®] Entertainment System.



¹ Available on select Apple and Android devices. Service availability, features and functionality vary by vehicle, device and the plan you are enrolled in. Device data connection required. Visit onstar.com for details and limitations.



Suburban Premier in Black
with available features.

PERFORMANCE

LEGENDARY TOWING POWER.

- Available maximum towing capability of up to 8,300 lbs¹
- Standard 5.3L EcoTec3 V8 engine with 355 horsepower, 383 lb.-ft. of torque and EPA-estimated 22 MPG on the highway²
- Available 6.2L EcoTec3 V8 engine with 420 horsepower and 460 lb.-ft. of torque.
- Advanced Direct Injection boosts power and fuel efficiency²
- Variable Valve Timing helps ensure optimum power and efficiency.
- Active Fuel Management™ deactivates four cylinders when extra power is not needed.
- Suburban Premier features Magnetic Ride Control, a real-time damping system that delivers a smooth, precise ride by reading the road a thousand times a second and changing damping in just 10-15 milliseconds.



¹ Requires 2WD, 5.3L EcoTec3 V8 engine and available Max Trailering Package. Before you buy a vehicle or use it for trailering, carefully review the Trailering section of the Owner's Manual. The weight of passengers, cargo and options or accessories may reduce the amount you can tow. ² EPA-estimated MPG city/highway: 15/22 (2WD), 14/21 (4WD).



SAFETY AND DRIVER ASSISTANCE

READY AND VIGILANT.



Adaptive Cruise Control – Advanced. Using sensors that include radar technology, this feature can automatically adapt cruise control speed to maintain a following gap to vehicles detected ahead. Available on Premier.



Automatic Emergency Braking. If an imminent front-end collision is detected with a vehicle you are following, the feature can alert you and can automatically apply hard emergency braking or enhance driver hard braking. Standard on LT and Premier. Available on LS.



Forward Collision Alert. This feature monitors how close your vehicle is to the detected vehicle in front of you and can alert you to a potential crash. Standard on LT and Premier. Available on LS.



Lane Keep Assist with Lane Departure Warning. At speeds above 37 mph, this feature monitors road lines and can gently turn the steering wheel to help keep the vehicle in its lane or provide an alert if a lane marker is unintentionally crossed. Standard on LT and Premier. Available on LS.



Lane Change Alert with Side Blind Zone Alert. This feature can provide side mirror alerts when it detects fast-approaching vehicles in adjacent lanes as well as moving vehicles in the side mirror blind zones. Standard on Premier. Available on LT.



Rear Cross Traffic Alert. This feature can alert you to detected vehicles crossing behind your Suburban when backing up. Standard on Premier. Available on LT.



Rear Vision Camera. When traveling in Reverse at low speeds, this feature helps provide a view of the area immediately behind your Suburban. Standard on all models.



Front and Rear Park Assist. At low speeds, this feature can provide distance alerts to nearby detected objects to help you park. Standard on Premier. Available on LT.



IntelliBeam® headlamps. When oncoming headlamps are sensed or when taillamps are detected, this feature intuitively adjusts between low and high beams. Standard on LT and Premier. Available on LS.



Safety Alert Seat. This feature gives you the option of getting directional vibration pulses from the driver seat instead of beeps to indicate the direction of potential threats. Standard on LT and Premier. Available on LS.



Teen Driver. This technology helps encourage better driving habits by providing an in-vehicle report card that monitors the frequency of certain available safety technology feature activations, muting the audio system when front-seat occupants aren't wearing their seat belts, and giving audible and visual warnings when the vehicle is traveling over a predetermined speed. Standard on all models.

Safety starts with you. Safety or driver assistance features are no substitute for the driver's responsibility to operate the vehicle in a safe manner. The driver should remain attentive to traffic, surroundings and road conditions at all times. Visibility, weather and road conditions may affect feature performance. Read the vehicle Owner's Manual for more important feature limitations and information.





CHEVY TRUCK LEGENDS



Are you a legend? When you've been building pickups for over 100 years, one thing you learn is there's a story behind every truck. And we want to hear yours. Chevy Truck Legends honors our dependable, long-lasting trucks and the people who keep them going strong.

If you own an eligible Chevy truck and have purchased or leased more than one new Chevy truck in your lifetime or have driven one over 100,000 miles, you're a legend. At chevytrucklegends.com, discover the benefits that come with membership. Explore the galleries and read about the relationship owners have with their Chevy trucks.

ACCESSORIES



22" 7-Spoke Gloss Black Aluminum Wheels with Chrome Inserts available from Chevrolet Accessories.



Cargo Security Shade available in Jet Black, Dune and Cocoa available from Chevrolet Accessories.



Front Interlocking Floor Liners in Jet Black with Chrome Bowtie Logo available from Chevrolet Accessories.

EXTERIOR COLORS



Summit White



Iridescent Pearl Tricoat^{1,2}



Silver Ice Metallic



Satin Steel Metallic



Shadow Gray Metallic



Siren Red Tintcoat¹



Black Cherry Metallic^{1,3}



Blue Velvet Metallic



Black

¹ Extra-cost color. ² Not available on LS. ³ Limited availability.



WHEELS



18" Aluminum Wheels with High-Polished Finish (PZX)
Standard on LS and LT



18" Painted-Aluminum Wheels (RCV)
Available on LT¹



18" Black-Painted Aluminum Wheels (REG)
Available on LT²



20" Polished-Aluminum Wheels (RD4)
Standard on Premier; available on LS and LT



20" Black-Painted Aluminum Wheels (NZQ)
Available on LT³



20" Chrome-Aluminum Wheels (RD2)
Available on Premier



22" Premium Painted-Aluminum Wheels
with Chrome Inserts (SGF)
Available on LT and Premier



22" Chrome-Aluminum Wheels
with Multi-Featured Design (RPT)
Available on LT and Premier



22" Chrome-Aluminum Wheels (SMI)
Available on LT and Premier



22" Gloss Black-Painted Aluminum Wheels
with Custom Silver Accents (SGK)
Available on LT⁴ and Premier⁴



22" Bright Machined-Aluminum Wheels
with Bright Silver Finish (SIY)
Available on Premier



22" Split 6-Spoke Chrome-Aluminum Wheels (SEU)
Available on Premier⁵

¹ Requires available Z71 Off-Road Package. ² Requires available Z71 Midnight Edition. ³ Requires available LT Midnight Edition. ⁴ Requires available RST Edition. ⁵ Requires available Premier Plus Edition.



MODELS



LS Suburban LS includes these features:

MECHANICAL

Brakes – 4-wheel antilock, 4-wheel disc with Duralife® rotors

Cooling – external engine and transmission oil coolers

Differential – heavy-duty automatic locking rear

Engine – 5.3L EcoTec3 V8 with Variable Valve Timing (VVT), Direct Injection and Active Fuel Management

StabiliTrak® – Electronic Stability Control System and Traction Control; includes Electronic Trailer Sway Control and Hill Start Assist¹

Suspension – premium smooth ride

Trailer equipment – trailer hitch platform, 7-wire harness with independent fused trailering circuits mated to a 7-way sealed connector and 2-inch trailering hitch receiver

Transmission – 6-speed automatic, electronically controlled with overdrive and Tow/Haul mode

EXTERIOR

Active aero shutters

Assist steps – Black

Daytime running lamps – LED

Headlamps – halogen, projector-beam, automatic on/off with automatic delay

Liftgate – manual

Mirrors – heated, power-adjustable, manual-folding with body-color caps; includes driver spotter mirror

Roof rails – Black

Taillamps – LED

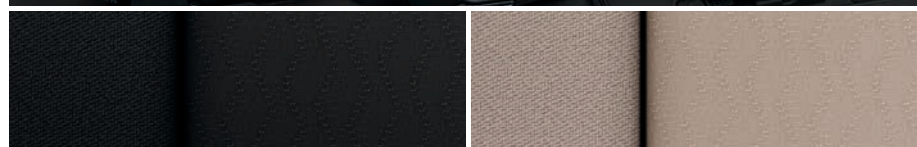
Wheels – 18" aluminum with high-polished finish (PZX)

Wipers – front variable-speed, intermittent with Rainsense®; rear intermittent with washer

INTERIOR

Air conditioning – automatic, tri-zone with humidity sensor and individual climate settings for driver, right-front passenger and rear passengers

Audio – 6-speaker system



Jet Black Premium Cloth (shown)

Dune Premium Cloth

INTERIOR (CONTINUED)

Cargo area – underfloor Cargo Management System

Console – overhead with sunglasses holder and conversation mirror

Cruise control – electronic with Set and Resume Speed

Door locks – power programmable with lockout protection and manual rear door child security

Driver Information Center – 4.2-inch diagonal multi-color display

Entertainment – Chevrolet Infotainment System² with 8-inch diagonal color touch-screen, AM/FM stereo, HD Radio®, single-slot CD/MP3 player, Bluetooth® audio streaming³; in-vehicle apps⁴; and Apple CarPlay®⁵ and Android Auto™⁶ compatibility

Floor mats – front- and second-row carpeted

Lighting – interior dome light, driver- and passenger-side door switch lighting with delayed entry feature, cargo lights, door handle- or Remote Keyless Entry-activated illuminated entry lighting, and map lights in front and second rows

Media – five USB ports⁷ and auxiliary input jack

Power outlets – 110-volt on rear of center console and five 12-volt auxiliary

Rear Park Assist¹

Rear Vision Camera¹

Remote Keyless Entry – extended-range

Remote vehicle starter system

Seat – front driver and passenger power-adjustable with power lumbar control

Seats – second- and third-row manual-folding 60/40 split-bench

SiriusXM® – All Access Package with 3-month trial subscription

Steering column – manual tilt

Steering wheel – leather-wrapped with mounted audio, cruise, phone and Driver Information Center controls

Theft-deterrent system – unauthorized entry

Tire Pressure Monitor – with Tire Fill Alert (does not monitor spare tire, if equipped)

Windows – power with driver and front passenger express-up/-down, all others express-down

¹ Read the vehicle Owner's Manual for important feature limitations and information. ² Chevrolet Infotainment System functionality varies by model. Full functionality requires compatible Bluetooth and smartphone, and USB connectivity for some devices. ³ Go to my.chevrolet.com/learnAbout/bluetooth to find out which phones are compatible with the vehicle. Full Bluetooth feature functionality varies by device, model and software version. ⁴ Requires active service plan and paid AT&T vehicle data plan or compatible device with 3G/4G LTE tethering data plan. Visit onstar.com for details and limitations. ⁵ Vehicle user interface is a product of Apple and its terms and privacy statements apply. Requires compatible iPhone and data plan rates apply. ⁶ Vehicle user interface is a product of Google and its terms and privacy statements apply. Requires the Android Auto app on Google Play and an Android compatible smartphone running Android 5.0 Lollipop or higher. Data plan rates apply. ⁷ Not compatible with all devices. ⁸ If you decide to continue service after your trial, your selected subscription plan will automatically renew thereafter. You will be charged at then-current rates. Fees and taxes apply. Please see the SiriusXM Customer Agreement at siriusxm.com for complete terms and how to cancel, which includes calling SiriusXM at 1-866-635-2349. All fees and programming are subject to change.

MODELS (CONTINUED)



LT In addition to or replacing LS features, LT includes:

EXTERIOR

IntelliBeam headlamps – automatic high beam on/off

Liftgate – power, programmable

INTERIOR

Audio – Bose premium 9-speaker sound system with subwoofer in center console

Automatic Emergency Braking¹

Forward Collision Alert¹

Lane Keep Assist with Lane Departure Warning¹

Memory – recalls two presets for power driver seat and power-adjustable accelerator and brake pedals

Mirror – rearview, auto-dimming

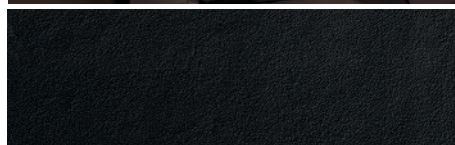
Pedals – power-adjustable accelerator and brake with memory

Safety Alert Seat¹ – for driver

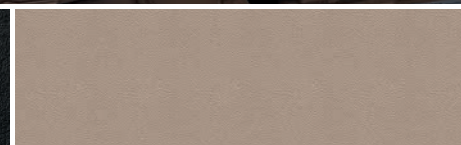
Seats – front bucket with leather-appointed seating surfaces and heated seat cushions and seatbacks

Steering column – manual tilt and telescopic

Universal Home Remote – programmable, includes garage door opener



Jet Black Leather-Appointed Seating Surfaces



Dune Leather-Appointed Seating Surfaces (shown)



Dark Ash Leather-Appointed Seating Surfaces

¹ Read the vehicle Owner's Manual for important feature limitations and information.

MODELS (CONTINUED)



PREMIER In addition to or replacing LT features, Premier includes:

MECHANICAL

Suspension – Magnetic Ride Control

EXTERIOR

Assist steps – Black with chrome accent strip

Fog lamps

Headlamps – high-intensity discharge (HID)

Liftgate – power, programmable, hands-free

Mirrors – heated, power-adjustable, power-folding with integrated turn signal indicators, ground illumination and driver-side auto-dimming feature

Moldings – body-color bodyside

Roof rails – Black with bright accent

Trailer hitch closeout – body-color

Wheels – 20" polished-aluminum (RD4)

INTERIOR

Audio – Bose Centerpoint Surround Sound premium 10-speaker system

Entertainment – Chevrolet Infotainment System with Navigation¹; 8-inch diagonal color touch-screen, AM/FM stereo, HD Radio,² single-slot CD/MP3 player, GPS navigation system, Bluetooth³ audio streaming²; in-vehicle apps³; Apple CarPlay⁴ and Android Auto⁵ compatibility, and SiriusXM⁶ NavTraffic⁶

Front and Rear Park Assist⁷

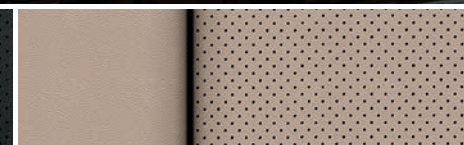
Keyless Open and Start – includes extended-range Remote Keyless Entry

Lane Change Alert with Side Blind Zone Alert⁷

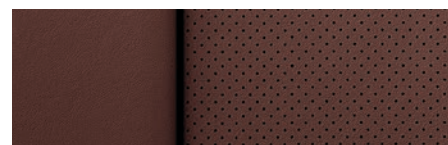
Memory – recalls two presets for power driver seat, outside mirrors, power tilt and telescopic steering column, and power-adjustable accelerator and brake pedals



Jet Black Perforated Leather-Appointed Seating Surfaces



Dune Perforated Leather-Appointed Seating Surfaces



Mahogany Perforated Leather-Appointed Seating Surfaces with Cocoa Accents (shown)⁹

INTERIOR (CONTINUED)

Rear Cross Traffic Alert⁷

Seats – driver and front passenger 12-way power adjusters with power lumbar control

Seats – ventilated driver and front passenger

Seats – second-row heated bucket seats with power-release

Seats – third-row power-folding 60/40 split-bench

Steering column – power tilt and telescopic

Steering wheel – heated

Wireless charging⁸

¹ Chevrolet Infotainment System functionality varies by model. Full functionality requires compatible Bluetooth and smartphone, and USB connectivity for some devices. Map coverage available in the United States, Puerto Rico and Canada.

² Go to my.chevrolet.com/learnAbout/bluetooth to find out which phones are compatible with the vehicle. Full Bluetooth feature functionality varies by device, model and software version. ³ Requires active service plan and paid AT&T vehicle data plan or compatible device with 3G/4G LTE tethering data plan. Visit onstar.com for details and limitations. ⁴ Vehicle user interface is a product of Apple and its terms and privacy statements apply. Requires compatible iPhone and data plan rates apply. ⁵ Vehicle user interface is a product of Google and its terms and privacy statements apply. Requires the Android Auto app on Google Play and an Android compatible smartphone running Android 5.0 Lollipop or higher. Data plan rates apply.

⁶ If you decide to continue service after your trial, your selected subscription plan will automatically renew thereafter. You will be charged at then-current rates. Fees and taxes apply. Please see the SiriusXM Customer Agreement at siriusxm.com for complete terms and how to cancel, which includes calling SiriusXM at 1-866-635-2349. All fees and programming are subject to change. ⁷ Read the vehicle Owner's Manual for important feature limitations and information. ⁸ The system wirelessly charges one compatible mobile device. Some devices require an adaptor or back cover. To check for phone or other device compatibility, visit my.chevrolet.com/learn for details. ⁹ Includes Jet Black accents with available Premier Plus Edition.

SPECIFICATIONS

● STANDARD ○ AVAILABLE – NOT AVAILABLE

	LS	LT	PREMIER
EXTERIOR			
Assist steps: Power-retractable with bright accent strip and perimeter lighting	–	–	○
Foglamps (requires available Luxury Package, Texas Edition Package, Z71 Off-Road Package or Z71 Midnight Edition on LT)	–	○	●
Liftgate: Rear, manual	●	–	–
Power, programmable	–	●	–
Power, programmable, hands-free (requires available Luxury Package or Texas Edition Package on LT)	–	○	●
Mirrors: Heated, power-adjustable, manual-folding with body-color caps; includes driver spotter mirror	●	●	–
Heated, power-adjustable, power-folding with integrated turn signal indicators, ground illumination and driver-side auto-dimming feature (requires available Luxury Package or Texas Edition Package on LT)	–	○	●
Moldings: Body-color bodyside	○	○	●
Bright bodyside	○	○	–
ENGINE/CHASSIS			
Engine: 5.3L EcoTec3 V8 with Variable Valve Timing (VVT), Direct Injection and Active Fuel Management; 355 hp @ 5600 rpm, 383 lb.-ft. of torque @ 4100 rpm	●	●	●
6.2L EcoTec3 V8 with Variable Valve Timing, Direct Injection and Active Fuel Management; 420 hp @ 5600 rpm, 460 lb.-ft. of torque @ 4100 rpm (requires available 6.2L Performance Package, RST 6.2L Performance Edition or Premier Plus Edition)	–	–	○
Steering: Power	●	●	●
Trailer brake controller: Integrated (requires available Max Trailering Package on LS and LT; requires available Max Trailering Package or 6.2L Performance Package, RST 6.2L Performance Edition or Premier Plus Edition on Premier)	○	○	○
Transfer case: Active, single-speed, electronic Autotrac with rotary controls; does not include Neutral and cannot be dinghy-towed (4WD models)	●	●	●
Active, 2-speed, electronic Autotrac with rotary controls; includes Neutral position for dinghy towing (4WD models)	○	○	○
Transmission: 6-speed automatic, electronically controlled with overdrive and Tow/Haul mode	●	●	●
10-speed automatic, electronically controlled with overdrive and Tow/Haul mode (requires available 6.2L Performance Package, RST 6.2L Performance Edition or Premier Plus Edition)	–	–	○
SAFETY & SECURITY			
Airbags: ¹ Frontal airbags for driver and front outboard passenger; seat-mounted side-impact airbags for driver and front outboard passenger; driver inboard seat-mounted side-impact airbag (requires front bucket seats); head-curtain airbags for all rows in outboard seating positions; includes front outboard Passenger Sensing System for frontal outboard passenger airbag	●	●	●
Automatic Emergency Braking ² (requires available Enhanced Driver Alert Package on LS)	○	●	●
Forward Collision Alert ² (requires available Enhanced Driver Alert Package on LS)	○	●	●
IntelliBeam headlamps: Automatic high beam on/off (requires available Enhanced Driver Alert Package on LS)	○	●	●
Lane Change Alert with Side Blind Zone Alert ² (requires available Luxury Package or Texas Edition Package on LT)	–	○	●
Lane Keep Assist with Lane Departure Warning ² (requires available Enhanced Driver Alert Package on LS)	○	●	●
LATCH system (Lower Anchors and Tethers for Children), for child restraint seats; lower anchors and top tethers located in all second-row seating positions, top tethers located in third-row seating positions	●	●	●

	LS	LT	PREMIER
SAFETY & SECURITY (CONTINUED)			
Park assist: Rear Park Assist ²	●	●	–
Front and Rear Park Assist ² (requires available Luxury Package, Texas Edition Package, Z71 Off-Road Package or Z71 Midnight Edition on LT)	–	○	●
Rear Cross Traffic Alert ² (requires available Luxury Package or Texas Edition Package on LT)	–	○	●
Rear Vision Camera ²	●	●	●
Teen Driver technology	●	●	●
Theft-deterrent system: Unauthorized entry	●	●	●
1 month of OnStar Safety & Security Plan coverage; ³ which includes Automatic Crash Response, Emergency Services, Crisis Assist, Stolen Vehicle Assistance, Roadside Assistance and Turn-by-Turn Navigation ⁴	●	●	●
INTERIOR			
Adaptive Cruise Control – Advanced: ² With Automatic Emergency Braking ² (requires available enhanced Driver Information Center)	–	–	○
Driver Information Center: 4.2-inch diagonal multi-color display	●	●	●
Enhanced with 8-inch diagonal multi-color reconfigurable display; includes Head-Up Display with multi-function readouts	–	–	○
Head-Up Display: Includes digital multi-function readouts (requires available enhanced Driver Information Center or Premier Plus Edition)	–	–	○
Keyless Open and Start: Includes extended-range Remote Keyless Entry (requires available Luxury Package or Texas Edition Package on LT)	–	○	●
Pedals: Power-adjustable accelerator and brake with memory (requires available Enhanced Driver Alert Package on LS)	○	●	●
Steering column: Manual tilt	●	–	–
Manual tilt and telescopic	–	●	–
Power tilt and telescopic (requires available Luxury Package or Texas Edition Package on LT)	–	○	●
Steering wheel: Leather-wrapped with mounted audio, cruise, phone and Driver Information Center controls	●	●	●
Heated (requires available Luxury Package or Texas Edition Package on LT)	–	○	●
Sunroof: Power with manual sunshade	–	○	○
SEATING			
Front bucket seats and center floor console with storage, cup holders and auxiliary input jack	●	●	●
Front 40/20/40 split-bench seat and center fold-down armrest with storage (includes USB port ⁵ ; auxiliary power outlet and input for audio system)	○	–	–
Second-row manual-folding 60/40 split-bench seat	●	●	–
Second-row 60/40 split-bench seat, power-release (requires available Luxury Package or Texas Edition Package on LT)	–	○	○
Second-row bucket seats, manual-release	–	○	–
Second-row bucket seats, power-release (requires available Luxury Package or Texas Edition Package on LT)	–	○	●
Second-row heated outboard seating positions (requires available Luxury Package or Texas Edition Package on LT)	–	○	●

1 A NOTE ON CHILD SAFETY: Always use seat belts and the correct child restraint for your child's age and size, even with airbags. Even in vehicles equipped with the Passenger Sensing System, children are safer when properly secured in a rear seat in the appropriate infant, child or booster seat. Never place a rear-facing infant restraint in the front seat of any vehicle equipped with an active frontal airbag. See your vehicle Owner's Manual and the child safety seat instructions for more safety information. **2** Read the vehicle Owner's Manual for important feature limitations and information. **3** OnStar plan, working electrical system, cell reception and GPS signal required. OnStar links to emergency services. Not all vehicles may transmit all crash data. Roadside services provided by Allstate Roadside Services for vehicles only. Limitations and restrictions apply. Stolen Vehicle Assistance requires armed GM factory-installed theft-deterrent system, contact method on file and enrollment to receive alerts. Services are intended to assist with vehicle recovery and do not prevent theft or protect against damage or loss. Visit onstar.com for details and limitations. Availability subject to change. **4** Advisor-based Turn-by-Turn Navigation is subject to User Terms and limitations, and varies by vehicle model. Map coverage available in the United States, Puerto Rico and Canada. **5** Not compatible with all devices.

SPECIFICATIONS (CONTINUED)

● STANDARD ○ AVAILABLE – NOT AVAILABLE

	LS	LT	PREMIER
SEATING (CONTINUED)			
Third-row manual-folding 60/40 split-bench seat	●	●	–
Third-row power-folding 60/40 split-bench seat (requires available Luxury Package or Texas Edition Package on LT)	–	○	●
ENTERTAINMENT			
Chevrolet Infotainment System ¹ with 8-inch diagonal color touch-screen, AM/FM stereo, HD Radio, [®] single-slot CD/MP3 player, Bluetooth [®] audio streaming ² in-vehicle apps ³ and Apple CarPlay ^{®4} and Android Auto ^{™5} compatibility	●	●	–
Chevrolet Infotainment System with Navigation ⁶ ; includes features listed previously, GPS navigation system and SiriusXM [®] NavTraffic ⁶	–	○	●
Rear-Seat Entertainment System: Blu-ray [®] /DVD player, overhead displays in second and third rows with remote control, Wi-Fi ^{®7} wireless projection capability, four 2-channel wireless digital headphones, auxiliary HDMI/MHL audio/video input and two USB ports ⁸ (single-slot CD/MP3 player deleted)	–	○	○
4G LTE Wi-Fi ⁷ Hotspot for up to seven devices, includes 1 month or 3 GB of data (whichever comes first)	○	○	○
Chevrolet Connected Access ⁹ with 10 years of standard connectivity, which currently enables features such as Vehicle Diagnostics and Dealer Maintenance Notification	●	●	●
PACKAGES AND SPECIAL EDITIONS			
Max Trailering Package	○	○	○
3.42 rear axle ratio and integrated trailer brake controller; LS and LT include rear air leveling suspension; 4WD models include Autotrac 2-speed active transfer case			
Enhanced Driver Alert Package	○	–	–
Power-adjustable pedals, Automatic Emergency Braking, ¹⁰ Forward Collision Alert; ¹⁰ IntelliBeam headlamps, Lane Keep Assist with Lane Departure Warning ¹⁰ and Safety Alert Seat ¹⁰			
LT Midnight Edition	–	○	–
20" Black-painted aluminum wheels (NZQ), P275/55R20 all-season tires, Black bowtie emblems, Black roof rack cross rails and Black exterior color			
Luxury Package	–	○	–
Outside heated power-adjustable power-folding mirrors with integrated turn signal indicators, ground illumination and driver-side auto-dimming feature, foglamps, hands-free programmable power liftgate, body-color trailer hitch closeout, Front and Rear Park Assist; ¹⁰ Rear Cross Traffic Alert; ¹⁰ Lane Change Alert with Side Blind Zone Alert; ¹⁰ Keyless Open and Start, power tilt and telescopic steering column, heated steering wheel, second-row 60/40 split-bench seat with power-release, second-row heated outboard seating positions, third-row power-folding 60/40 split-bench seat, memory for outside mirrors and steering column settings, and additional 9 months of SiriusXM [®]			
Texas Edition Package	–	○	–
Luxury Package content, Black roof rack cross rails and Texas Edition door badges			

	LS	LT	PREMIER
PACKAGES AND SPECIAL EDITIONS (CONTINUED)			
271 Off-Road Package	–	○	–
271 Off-Road suspension, 3.42 rear axle ratio, Autotrac 2-speed active transfer case, high-capacity air filter, Hill Descent Control, Front and Rear Park Assist; ¹⁰ Black recovery hooks; ¹¹ foglamps, and 271-specific features including unique grille design, skid plates, 18" painted-aluminum wheels (RCV) with all-terrain tires, Black tubular assist steps, front sill plates, rubber floor mats with 271 logo, 271 decal on instrument cluster, and 271 badges on pillar and liftgate (4WD models)			
271 Midnight Edition	–	○	–
271 Off-Road Package content plus 18" Black-painted aluminum wheels (REG), all-terrain tires, Black bowtie emblems, unique 271 Midnight grille, Black roof rack cross rails and Black exterior color (4WD models)			
Sun, Entertainment and Destinations Package	–	○	○
Power sunroof, Rear-Seat Entertainment System content, and additional 9 months of SiriusXM [®] All Access Package and NavTraffic ⁶ and Travel Link ⁶ (includes Chevrolet Infotainment System with Navigation ¹ on LT)			
Theft Protection Package	–	○	○
Self-powered horn, interior movement and vehicle inclination sensors, door and liftgate lock shields, and glass breakage sensors in rear quarter glass and liftgate window; removes sunglasses holder and conversation mirror from overhead console (requires available Luxury Package or Texas Edition Package on LT)			
RST Edition	–	○	○
22" Gloss Black-painted aluminum wheels with Custom Silver accents (SGK), wheel locks, unique Gloss Black sport grille with body-color surround, body-color door handles and headlamp accents, and Black bowtie emblems, mirror caps, beltline moldings, roof rails and nameplate badging, and unique RST emblem; LT includes rear air leveling suspension (available with Summit White, Silver Ice Metallic, Shadow Gray Metallic or Black exterior colors)			
RST 6.2L Performance Edition	–	–	○
6.2L EcoTec3 V8 engine, 10-speed automatic transmission, performance-calibrated Magnetic Ride Control suspension, 170-amp alternator, high-capacity air filter, 3.23 rear axle ratio, Autotrac 2-speed active transfer case (4WD models) and integrated trailer brake controller (requires available RST Edition)			
Premier Plus Edition	–	–	○
6.2L EcoTec3 V8 engine, 10-speed automatic transmission, 22" split 6-spoke chrome-aluminum wheels (SEU), 170-amp alternator, high-capacity air filter, 3.23 rear axle ratio, Autotrac 2-speed active transfer case (4WD models), integrated trailer brake controller, power sunroof, power-retractable assist steps, Black roof rack cross rails, polished exhaust tip, Mahogany perforated leather-appointed seating surfaces with Jet Black accents, second-row bucket seats with power-release, enhanced Driver Information Center, Head-Up Display, Rear-Seat Entertainment System content, cargo area organizer, and additional 9 months of SiriusXM [®] All Access Package and NavTraffic ⁶ and Travel Link ⁶			
6.2L Performance Package	–	–	○
6.2L EcoTec3 V8 engine, 10-speed automatic transmission, 170-amp alternator, Active Noise Cancellation, high-capacity air filter, 3.23 rear axle ratio, Autotrac 2-speed active transfer case (4WD models), integrated trailer brake controller, 8-inch reconfigurable driver cluster, Head-Up Display and Rear-Seat Entertainment System			

¹ Chevrolet Infotainment System functionality varies by model. Full functionality requires compatible Bluetooth and smartphone, and USB connectivity for some devices. Map coverage available in the United States, Puerto Rico and Canada. ² Go to my.chevrolet.com/learnAbout/bluetooth to find out which phones are compatible with the vehicle. Full Bluetooth feature functionality varies by device, model and software version. ³ Requires active service plan and paid AT&T vehicle data plan or compatible device with 3G/4G LTE tethering data plan. Visit onstar.com for details and limitations. ⁴ Vehicle user interface is a product of Apple and its terms and privacy statements apply. Requires compatible iPhone and data plan rates apply. ⁵ Vehicle user interface is a product of Google and its terms and privacy statements apply. Requires the Android Auto app on Google Play and an Android compatible smartphone running Android 5.0 Lollipop or higher. Data plan rates apply. ⁶ If you decide to continue service after your trial, your selected subscription plan will automatically renew thereafter. You will be charged at then-current rates. Fees and taxes apply. Please see the SiriusXM Customer Agreement at siriusxm.com for complete terms and how to cancel, which includes calling SiriusXM at 1-866-635-2349. All fees and programming are subject to change. ⁷ Service varies with conditions and location. Requires active service plan. Data plans offered by AT&T. Visit onstar.com for details and limitations. Availability subject to change. ⁸ Not compatible with all devices. ⁹ Standard connectivity available only to original purchaser for 10 years. Services enabled by Connected Access are subject to change. Does not include emergency or security services. Diagnostic capabilities vary by model and service plan. Message and data rates may apply. Requires contact method on file and enrollment to receive alerts. Not all issues will deliver alerts. Visit onstar.com for details and limitations. ¹⁰ Read the vehicle Owner's Manual for important feature limitations and information. ¹¹ To avoid the risk of injury, never use recovery hooks to tow a vehicle. See the Owner's Manual for more information.

DIMENSIONS

Length	224.4"
Wheelbase	130.0"
Height	74.4"

Width	80.5"
Front Track	68.8"
Rear Track	68.7"

Head Room (front/2nd row/3rd row)	42.8"/39.1"/38.5"
Head Room with sunroof (front/2nd row/3rd row)	39.7"/39.1"/38.5"
Leg Room (front/2nd row/3rd row)	45.3"/39.7"/34.5"
Shoulder Room (front/2nd row/3rd row)	64.8"/65.1"/62.6"

MAXIMUM CAPACITIES

Fuel tank (approximate)	31 gallons
Maximum trailer weight ratings ¹	5.3L 2WD: 6,300 lbs. 5.3L 2WD: 8,300 lbs. with Max Trailering Package 5.3L 4WD: 6,000 lbs. 5.3L 4WD: 8,000 lbs. with Max Trailering Package 6.2L 2WD: 8,100 lbs. 6.2L 4WD: 7,900 lbs.

Seating	LS: seats 8, option for 9 LT: seats 8, option for 7 Premier: seats 7, option for 8
Cargo volume ²	Behind third-row seat: 39.3 cubic feet With third-row seat folded: 76.7 cubic feet With second- and third-row seats folded: 121.7 cubic feet

EPA-ESTIMATED FUEL ECONOMY

5.3L EcoTec3 V8 2WD	15 MPG city/22 highway/18 combined
5.3L EcoTec3 V8 4WD	14 MPG city/21 highway/16 combined
6.2L EcoTec3 V8 2WD	14 MPG city/23 highway/17 combined
6.2L EcoTec3 V8 4WD	14 MPG city/20 highway/16 combined



Experience Chevrolet Complete Care, a comprehensive coverage, warranty and protection program that comes standard with every new 2020 Chevrolet Suburban lease and purchase. Simply, it is designed around you, to make it easy to keep your Chevrolet like new – and give you the confidence you deserve when you need it most.

Your comprehensive owner benefit program.

Includes one maintenance visit (oil change, tire rotation and multi-point vehicle inspection) ³
5 years/60,000 miles ⁴ of Roadside Assistance ⁵ and Courtesy Transportation.
3-year/36,000-mile ⁴ Bumper-to-Bumper Limited Warranty.
5-year/60,000-mile ⁴ Powertrain Limited Warranty.
6 years/100,000 miles ⁴ of Rust-Through Protection.
Chevrolet Connected Access ⁶ with 10 years of standard connectivity, which currently enables features such as Vehicle Diagnostics and Dealer Maintenance Notification.
1 month of Chevrolet Connected Services ⁷ and 1 month of OnStar Safety & Security Plan coverage. ⁷

NEW VEHICLE LIMITED WARRANTY

3-year/36,000-mile Bumper-to-Bumper Limited Warranty. Chevrolet will warrant each 2020 Suburban from bumper to bumper for 3 years/36,000 miles (whichever comes first; see dealer for details), with no deductible, from the original in-service date of the vehicle, for warrantable repairs that are required as a result of defects due to materials and/or workmanship. Cosmetic corrosion resulting from defects is also covered under the Bumper-to-Bumper Limited Warranty. In addition, rust-through corrosion will be covered for 6 years/100,000 miles (whichever comes first). See dealer for details.

5-year/60,000-mile transferable Powertrain Limited Warranty. Every 2020 Suburban comes with a 5-year/60,000-mile (whichever comes first) transferable Powertrain Limited Warranty. 24/7 Roadside Assistance and Courtesy Transportation are also offered for the duration of the Powertrain Limited Warranty. Please see your Chevrolet dealer for details.

¹ Before you buy a vehicle or use it for trailering, carefully review the Trailering section of the Owner's Manual. The weight of passengers, cargo and options or accessories may reduce the amount you can tow. ² Cargo and load capacity limited by weight and distribution. ³ Maintenance visit must occur within first year of vehicle delivery. Service visit consists of ACDelco dexos1™ Full Synthetic Oil and Filter Change/Tire Rotation/MPVI. Does not include air filters. See participating dealer for other restrictions and complete details. ⁴ Whichever comes first. See dealer for details. ⁵ Roadside service provided by Allstate Roadside Services. Limitations apply. ⁶ Standard connectivity available only to original purchaser for 10 years. Services enabled by Connected Access are subject to change. Does not include emergency or security services. Diagnostic capabilities vary by model and service plan. Message and data rates may apply. Requires contact method on file and enrollment to receive alerts. Not all issues will deliver alerts. Visit onstar.com for details and limitations. ⁷ Connected services include navigation services and Remote Access Plan. Services subject to terms and limitations. Certain services require working electrical system, cell reception and GPS signal. OnStar links to emergency services. Visit onstar.com for details. Availability subject to change.

IMPORTANT INFORMATION

Chevrolet Owner Center (my.chevrolet.com). Everything you need to know. Anything you need to do. Your Chevrolet Owner Center makes it easy. Create your account today to get the most out of your new vehicle. Get special alerts and offers, schedule service, review your maintenance schedule, and view how-to videos specifically for your vehicle. All online, anytime. Visit the Owner Center today to register or take a tour.

Engines. Chevrolet products are equipped with engines produced by GM Global Propulsion Systems or other suppliers to GM worldwide. The engines in Chevrolet products may also be used in other GM makes and models.

Assembly. Chevrolet vehicles and their components are assembled or produced by different operating units of General Motors, its subsidiaries or suppliers to GM worldwide. We sometimes find it necessary to produce Chevrolet vehicles with different or differently sourced components than originally scheduled. Since some options may be unavailable when your vehicle is assembled, we suggest you verify that your vehicle includes the equipment you ordered and that, if there were changes, they are acceptable to you.

Chevrolet Connected Services and OnStar. Connected vehicle services vary by vehicle model and require an active service plan, working vehicle electrical system (including battery), cell reception and GPS signal to function properly. Visit onstar.com for details and limitations.

A note on child safety. Always use seat belts and the correct child restraint for your child's age and size, even with airbags. Even in vehicles equipped with the Passenger Sensing System, children are safer when properly secured in a rear seat in the appropriate infant, child or booster seat. Never place a rear-facing infant restraint in the front seat of any vehicle equipped with an active frontal airbag. See your vehicle Owner's Manual and the child safety seat instructions for more safety information.

Important words about this catalog. We have tried to make this catalog comprehensive and factual. We reserve the right, however, to make changes at any time, without notice, in prices, colors, materials, equipment, specifications, models and availability. Specifications,

dimensions, measurements, ratings and other numbers in this catalog and other printed materials provided at the dealership or affixed to vehicles are approximations based on design and engineering drawings, prototypes and laboratory tests. Your vehicle may differ due to variations in manufacture and equipment. Since some information may have been updated since the time of printing, please check with your Chevrolet dealer for complete details. Chevrolet reserves the right to lengthen or shorten the model year for any product for any reason or to start and end model years at different times. Certain vehicle features may lose their usefulness over time due to obsolescence from technological changes. Unless otherwise noted, all claims based on GM Large SUV segment and latest available competitive information. Excludes other GM vehicles.

Fleet orders. Some standard content may be deleted on fleet orders. See dealer for details.

Chevrolet ownership experience. Chevrolet is committed to enhancing the vehicle shopping and ownership experience through a wide array of programs. Visit chevrolet.com to build and price, find a vehicle, request a quote, compare vehicles, find financial tools or track your vehicle order. You'll also find information about 24-hour Roadside Assistance, Courtesy Transportation, Customer Assistance, GM Mobility, safety and current incentives.

Chevrolet.com/safety. Chevrolet is committed to keeping you and your family safe – from the start of your journey to your destination. That's why every Chevrolet is designed with a comprehensive list of safety and security features to help give you peace of mind.

GMmobility.com (1-800-323-9935). GM MobilitySM offers financial assistance for eligible adaptive equipment to make automotive travel easier for persons with disabilities or special transportation needs. To learn more about special GM Mobility offers, visit gmmobility.com.

The BuyPower Card. The Chevrolet BuyPower Card – Every purchase you make with the BuyPower Card from Capital One* helps you earn toward an eligible new Chevrolet, Buick, GMC or Cadillac vehicle. There's no limit on the amount you can earn or redeem, and your Earnings don't expire. Visit chevroletbuypowercard.com/catalogs.

* Capital One, N.A. is the issuer of the BuyPower Card. General Motors ("GM") is responsible for the operation and administration of the Earnings program.



GM, the GM logo, Chevrolet, the Chevrolet logo, and the slogans, emblems, vehicle model names, vehicle body designs and other marks appearing in this catalog are the trademarks and/or service marks of General Motors, its subsidiaries, affiliates or licensors. ©2019 OnStar LLC. All rights reserved. Sirius, XM, SiriusXM and all related marks and logos are trademarks of Sirius XM Radio Inc. The Bluetooth word mark is a registered trademark owned by Bluetooth SIG, Inc., and any use of such mark by Chevrolet is under license. Bose and Centerpoint are registered trademarks of the Bose Corp. Blu-ray is a registered trademark of the Blu-ray Disc Association.

©2019 General Motors. All rights reserved. August 2019



FIND NEW ROADS™

CHEVROLET.COM



DEP
DEALER ePROCESS