

DATE: 1/11/2018

BID NO.: 50-00121902

INVITATION TO BID  
THIS IS NOT AN ORDER

Page: 4

## JEFFERSON PARISH

PURCHASING DEPARTMENT  
P.O. BOX 9  
GRETN, LA. 70054-0009  
504-364-2678

VENDOR:

BUYER: SFOLSE

As per LSA-RS 47:301 et seq., all governmental bodies are excluded from payment of sales taxes to any Louisiana taxing body. Quotations shall be based on F.O.B. Agency warehouse or jobsite, anywhere within the Parish as designated by the Purchasing Department.

JEFFERSON PARISH reserves the right to cancel all or any part of an order if not shipped promptly. No charges will be allowed for parking or cartage unless specified in quotation. The order must not be filled at a higher price than quoted. JEFFERSON PARISH reserves the right to cancel at any time and for any reason by issuing a THIRTY (30) day written notice to the contractor.

JEFFERSON PARISH is expecting all products to be new and all work to be done in workman-like manner, according to standard practices. Any deviations or alteration from the specifications must be indicated on the bid form for each item and upon request, product data for same must be submitted by the time specified by the Purchasing Department.

### DELIVERY: FOB JEFFERSON PARISH

INDICATE DELIVERY DATE ON EQUIPMENT AND SUPPLIES

7-9 DAYS

INDICATE STARTING TIME (IN DAYS) FOR CONSTRUCTION WORK

INDICATE COMPLETION TIME (IN DAYS) FOR CONSTRUCTION WORK

In the event that addenda are issued with this bid, bidders MUST acknowledge all addenda on the bid form. Bidder must acknowledge receipt of an addendum on the bid form as indicated. Failure to acknowledge any addendum on the bid form will result in bid rejection.

Acknowledge Receipt of Addenda: NUMBER: #1 1/18  
NUMBER: \_\_\_\_\_  
NUMBER: \_\_\_\_\_  
NUMBER: \_\_\_\_\_

LOUISIANA CONTRACTOR'S LICENSE NO.: (if applicable) \_\_\_\_\_

### \*\*\* ALL BIDDERS MUST COMPLETE SECTION BELOW \*\*\*

FIRM NAME:

Consco

SIGNATURE:

(Must be signed here)

Jeff D. Sullivan

TITLE:

SALES

PRINT OR TYPE NAME:

Jeff D. Sullivan

ADDRESS:

1840 LFA RD.

CITY, STATE:

METairie, LA

ZIP:

70061

TELEPHONE:

(504) 835-7319

FAX:

(504) 832-0820

EMAIL ADDRESS:

Jeff@ConscoInc.com

TOTAL PRICE OF ALL BID ITEMS: \$ 17361.50

DATE: 1/11/2018

## INVITATION TO BID FROM JEFFERSON PARISH - continued

Page: 5

BID NO.: 50-00121902

SEALED BID

ITEM NUMBER	QUANTITY	U/M	DESCRIPTION OF ARTICLES	UNIT PRICE QUOTED	TOTALS
1	144.00	EA	STOCK SUPPLIES FOR THE JEFFERSON PARISH EB PUBLIC WORKS CENTRAL WAREHOUSE  0010 SADDLE, DOUBLESTRAP, 6 INCH X 1 INCH CC TAP, 8 INCH WIDTH, 2 INCH STRAPS, ALL  STAINLESS, O.D. 06.43 - 07.73, DOMESTIC, CASCADE # CS22-0773-1CC STK. # 0160900	70.67	10176.48
2	30.00	EA	0020 CLAMP, 2 INCH X 6 INCH LONG, ALL STAINLESS, 2.35-2.63 RANGE, FULL GASKET  DOMESTIC, POWERSEAL #3121AS-2 X 6 STK. # 0164600 FS1-263-75	33.22	996.60
3	2.00	EA	0030 CLAMP, PIPE REPAIR, 12 INCH X 20 INCH LONG, DOUBLE BAND, ALL STAINLESS	332.09	664.18
4	5.00	EA	STEEL, O.D. RANGE 13.95 - 14.75, BUNA FULL FACED GASKET, MADE IN U.S.A., FORD #FS2-1475X20-N STK. # 0166750  0040 CLAMP, PIPE REPAIR, 14 INCH X 20 INCH LONG, DOUBLE BAND, ALL STAINLESS	332.09	1660.45
5	1.00	EA	STEEL, O.D. RANGE 15.07 - 15.82, BUNA FULL FACED GASKET, FORD #FS2-A583 X 20-N STK. # 0167190  0050 CLAMP, 20 IN X 24 IN LENGTH, O.D. RANGE 23.14 IN THROUGH 24.34 IN, DOUBLE BAND, ALL STAINLESS STEEL, POWERSEAL #3122AS-G STK. # 0167810	N/B	N/B
6	5.00	EA	0060 CLAMP, PIPE REPAIR, 6 INCH X 1 INCH CC TAP X 15 INCH LONG, ALL STAINLESS,  6.84 TO 7.24 RANGE, SINGLE BAND, FULL GASKET, DOMESTIC, FORD #FS1-724-15-CC4 STK. # 0170100	104.75	523.75
7	7.00	EA	0070 CLAMP, PIPE REPAIR, 8 INCH X 3/4 INCH TAP X 15 INCH LONG, ALL STAINLESS  08.99 TO 09.39 RANGE, SINGLE BAND, FULL GASKET, DOMESTIC, FORD #FS1-939-15-CC3 STK. # 0170120	122.52	857.64
8	3.00	EA	0080 SPOOL, VALVE, 10 INCH X 24 INCH LONG, FLANGED X PLAIN END, PRIME COATED	169-	507-

DATE: 1/11/2018

INVITATION TO BID FROM JEFFERSON PARISH - continued

Page: 6

BID NO.: 50-00121902

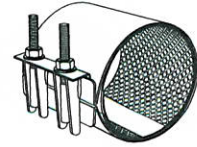
SEALED BID

ITEM NUMBER	QUANTITY	U/M	DESCRIPTION OF ARTICLES	UNIT PRICE QUOTED	TOTALS
9	16.00	EA	CLASS 52 OR 53 DUCTILE IRON PIPE STK. # 0500570		
			0090 SPOOL, VALVE, 6 INCH X 24 INCH LONG FLANGED X PLAIN END, PRIME COATED, CLASS	96-	1536-
10	20.00	EA	52 OR 53 DUCTILE IRON PIPE STK. # 0500550		
			0100 SADDLE, BRONZE, 2 INCH X 1 INCH CC TAP, O.D. 2.13 FOR CTS, NO LEAD BRASS, GASKET IS SBR TWINSEAL DUAL O-RING, DOMESTIC, <del>POWERSEAL #3402-2 X 1 CC-NL</del> STK. # 0160370	21.97	439.40
			540-204		



# SUBMITTAL INFORMATION

## Repair Clamps - (FS1-xxx-Length style)



### 2" TO 4" ALL STAINLESS STEEL CIRCLE REPAIR CLAMPS

#### Optional Stainless Taps

ASTM A240 type 304 stainless steel tig welded to band. Available with AWWA or I.P. threads.

#### Band

ASTM A240 type 304 stainless steel

#### Lifter Bar

ASTM A240 type 304 heavy gauge stainless steel

#### Sidebar

ASTM A240 type 304 heavy gauge stainless steel

#### Lug

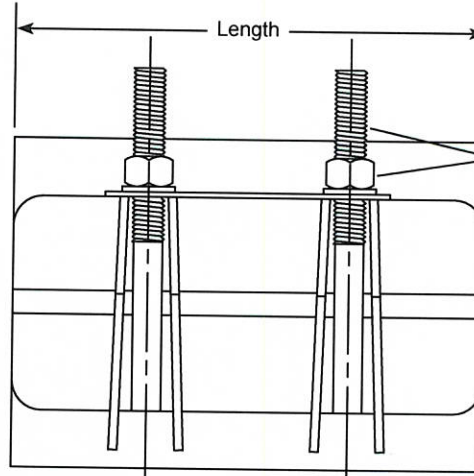
ASTM A240 type 304 heavy gauge stainless steel

#### Armor

ASTM A240 type 304 heavy gauge stainless steel, mold bonded into the gasket to ensure uniform compression against the pipe

#### Gasket

Gridded virgin SBR compounded for water service, per ASTM D2000. Buna-N Nitrile is optional.



**Bolts & Nuts**  
ASTM A240 type 304 stainless steel nuts and washers. Nuts are coated to prevent galling.

#### OUTLET THREAD TAP CODE

CC (AWWA) Thread			IP Thread		
THREAD	CODE NUMBER	MIN. CLAMP SZ.	THREAD	CODE NUMBER	MIN. CLAMP SZ.
3/4" CC	-CC3	2.63	3/4" IP	-IP3	2.63
1" CC	-CC4	2.63	1" IP	-IP4	2.63
1-1/4" CC	-CC5	3.70	1-1/4" IP	-IP5	3.70
1-1/2" CC	-CC6	4.25	1-1/2" IP	-IP6	3.70
2" CC	-CC7	4.73	2" IP	-IP7	4.25

NOM. PIPE SIZE	PIPE O.D. RANGE	LENGTH AND APPROXIMATE WEIGHT (LBS.)									BOLT SIZE	BAND THICKNESS	CATALOG NUMBER FS1-XXX-LENGTH	✓ SUBMITTED ITEM(S)
		4"	6"	7.5"	10"	12.5"	15"	20"	24"	30"				
2"	2.05 - 2.25	3	4	4	5	5	8	n/a	n/a	n/a	1/2" 13 UNC	24 GA.	FS1-225-	
	2.35 - 2.63	N/A	4	4	5	5	8	n/a	n/a	n/a			FS1-263-	
2-1/4" - 2-1/2"	2.70 - 3.00	N/A	4	5	5	6	8	n/a	n/a	n/a			FS1-300-	
	2.97 - 3.25												FS1-325-	
	3.42 - 3.66	N/A	4	5	5	6	9	n/a	n/a	n/a			FS1-366-	
	3.46 - 3.70												FS1-370-	
	3.73 - 4.00												FS1-400-	
3"	3.96 - 4.25												FS1-425-	
	4.06 - 4.35												FS1-435-	
	4.37 - 4.65	N/A	5		6	7	9	n/a	n/a	n/a			FS1-465-	
	4.45 - 4.73												FS1-473-	
	4.50 - 4.80												FS1-480-	
	4.74 - 5.14												FS1-514-	
	4.95 - 5.35	N/A	5		7	8	10	14	16	21	5/8" 11 UNC	24 GA.	FS1-535-	
	5.22 - 5.62												FS1-562-	
Number of Bolts		1	2	2	3	3	4	6	6	9				

#### FEATURES

- Buna-N gasket and conductivity strips are available
- Also available in two-and three-section clamps for a wider range of pipe sizes and tolerances
- Optional outlet taps are available for repair of service line pull-outs. Add tapping code to catalog number
- All welds are fully passivated to restore corrosion resistant characteristics of stainless steel
- UL classified to ANSI/NSF Standard 61

The Ford Meter Box Company considers the information in this submittal form to be correct at the time of publication. Item and option availability, including specifications, are subject to change without notice. Please verify that your product information is current.



**The Ford Meter Box Company, Inc.**

P.O. Box 443, Wabash, Indiana U.S.A. 46992-0443

Phone: 260-563-3171 / Fax: 800-826-3487

Overseas Fax: 260-563-0167

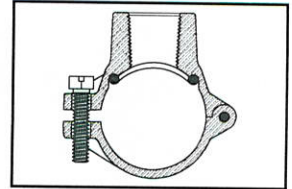
www.fordmeterbox.com

Submitted By:

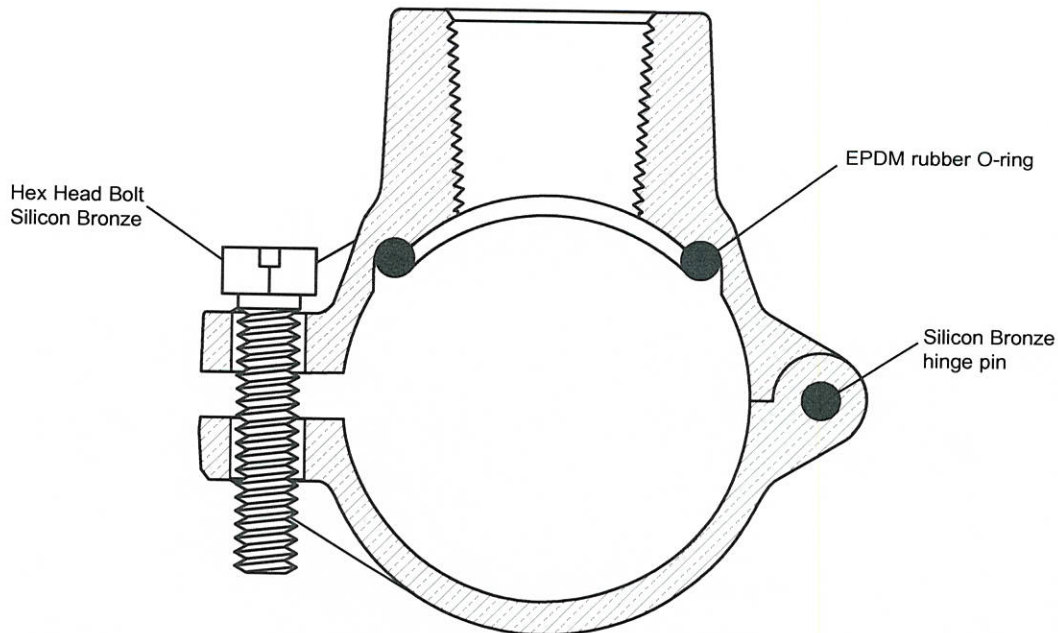
11/07/16

## SUBMITTAL INFORMATION

### Brass Saddle For 2" Copper - (S40-xxx style)



#### S40 BRASS SADDLE WITH AWWA TAP FOR 2" COPPER TUBING



COPPER TUBE SIZE	ACTUAL TUBE O.D.	AWWA TAP SIZE	APPROX. WT. LBS.	CATALOG NUMBER	✓ SUBMITTED ITEM(S)
2"	2.13	1/2"	.9	S40-201	
		3/4"	1.1	S40-203	
		1"	1.4	S40-204	

### FEATURES

- All brass conforms to AWWA Standard C800 (ASTM B62 and ASTM B584, UNS NO C83600 - 85-5-5-5).
- Saddle body and strap permanently held together with silicon bronze pin.
- Bolt is 5/16" slotted hex head silicon bronze.
- O-ring is EPDM rubber ASTM D2000.

The Ford Meter Box Company considers the information in this submittal form to be correct at the time of publication. Item and option availability, including specifications, are subject to change without notice. Please verify that your product information is current.



**The Ford Meter Box Company, Inc.**  
P.O. Box 443, Wabash, Indiana U.S.A. 46992-0443  
Phone: 260-563-3171 / Fax: 800-826-3487  
Overseas Fax: 260-563-0167  
www.fordmeterbox.com

01/12/16

Submitted By: