



**5000140005 - One Time Purchase of Detection Cameras for Jefferson
Parish Traffic Engineering**
Jefferson Parish Government

Project documents obtained from www.CentralBidding.com
07-Oct-2022 08:16:13 AM



Bid Number 5000140005

**One Time Purchase of Detection Cameras
for Jefferson Parish Traffic Engineering**

BID DUE: October 12, 2022 AT 11:00 AM

ATTENTION VENDORS!!!

Please review all pages and respond accordingly, complying with all provisions in the technical specifications and Jefferson Parish Instructions for Bidders and General Terms and Conditions. All bids must be received on the Purchasing Department's eProcurement site, www.jeffparishbids.net, by the bid due date and time. Late bids will not be accepted.

**Jefferson Parish Purchasing Department
200 Derbigny Street
General Government Building, Suite 4400
Gretna, LA 70053
Buyer Name: Brenda Bellow
Buyer Email: bbellow@jeffparish.net
Buyer Phone: 504-364-2683**

DATE: 10/05/2022

INVITATION TO BID
THIS IS NOT AN ORDER

Page: 1

BID NO.: 50-00140005

JEFFERSON PARISH

PURCHASING DEPARTMENT
P.O. BOX 9
GRETN, LA. 70054-0009
504-364-2678

VENDOR: 27118 BLANK BID COPY VENDOR

BUYER: BBELLOW@jeffparish.net

Bids will be received until 11:00 AM, 10/12/2022 via online at www.jeffparishbids.net.

LATE BIDS WILL NOT BE ACCEPTED

NOTE: ONLY BIDS WRITTEN IN INK OR TYPEWRITTEN, AND PROPERLY SIGNED BY A MEMBER OF THE FIRM OR AUTHORIZED REPRESENTATIVE, WILL BE ACCEPTED. PENCIL AND/OR PHOTOSTATIC FIGURES OR SIGNATURES SHALL RESULT IN BID REJECTION. HOWEVER, ELECTRONIC SIGNATURES AS DEFINED IN LSA - R.S. 9:2602(8) ARE ACCEPTABLE. SIGNATURE MUST BE A SECURED DIGITAL SIGNATURE.

All bids submitted are subject to these instructions and general conditions and any special conditions and specifications contained herein, all of which are made part of this bid proposal reference. By submitting a bid, vendor agrees to comply with all provisions of Louisiana Law, as well be in compliance with the Jefferson Parish Code of Ordinances, Louisiana Code of Ethics, applicable Jefferson Parish ethical standards and Jefferson Parish Resolution No. 113646 and/or Resolution No. 113647 as amended. A copy of these resolutions may be obtained from the Office of the Parish Clerk, Suite 6700, Jefferson Parish General Government Building, 200 Derbigny Street, Gretna, LA 70053. You may also obtain a copy by visiting the Purchasing Department webpage at purchasing.jeffparish.net and clicking on On-line forms.

All vendors submitting bids should register as a Jefferson Parish vendor if not already yet registered. Registration forms may be downloaded from <http://purchasing.jeffparish.net> and by clicking on Vendor Information. Current W-9 forms with respective Tax Identification numbers and vendor applications may be submitted at any time; however, if your company is not registered and/or a current W-9 form is not on file, vendor registration is mandatory. Vendors may experience a delay in payment if your company is not a registered vendor with Jefferson Parish.

Jefferson Parish is exempt from paying sales tax under LSA-R.S. 47:301 (8)(c). All prices for purchases by Jefferson Parish of supplies and materials shall be quoted in the unit of measure specified and unless otherwise specified, shall be exclusive of state and local taxes. The price quoted for work shall be stated in figures. In the event there is a difference in unit prices and totals, the unit price shall prevail. Quotations shall be based on F.O.B. Delivered, anywhere within the Parish as designated by the Purchasing Department. JEFFERSON PARISH WILL ACCEPT ONE BID ONLY FROM EACH VENDOR. Items bid must meet specifications. JEFFERSON PARISH will accept one price for each item unless otherwise indicated. Two or more prices for one item will result in bid rejection. Bidders are required to complete, sign and return the bid form and/or complete and return the associated line item pricing forms as indicated. The price quoted for work shall be stated in figures. In the event there is a difference in unit prices and totals, the unit prices shall prevail.

JEFFERSON PARISH reserves the right to award contracts or place orders on a lump sum or individual item basis, or such combination, as shall in its judgment be in the best interest of JEFFERSON PARISH. Every contract or order shall be awarded to the LOWEST RESPONSIVE and RESPONSIBLE BIDDER, taking into consideration the CONFORMITY WITH THE SPECIFICATIONS and the DELIVERY AND/OR COMPLETION DATE.

PROTESTS: Only those vendors that submit bids in response to this solicitation may protest any element of the procurement, in writing to the Director of the Purchasing Department. Written protest must be received within 48 hours of the release of the bid tabulation by the Purchasing Department. After consultation, the Parish Attorney's Office will then respond to protests in writing. (For more information, please see Chapter 2, Article VII, Division 2, Sec. 2-914.1 of the Jefferson Parish Code of Ordinances.)

JEFFERSON PARISH reserves the right to cancel all or any part of an order if not shipped promptly. No charges will be allowed for parking or cartage unless specified in the quotation. The order must not be filled at a higher price than quoted. JEFFERSON PARISH reserves the right to cancel at any time and for any reason by issuing a THIRTY (30) day written notice to the contractor.

JEFFERSON PARISH requires all products to be new (current) and all work must be performed according to standard practices for the project. Unless otherwise specified, no aftermarket parts will be accepted. Unless otherwise specified, all workmanship and materials must have at least one (1) year guaranty, in writing, from the date of delivery and/or acceptance of the project. Any deviations or alteration from the specifications must be indicated on the bid form for each item and upon request, product data for same must be submitted by the time specified by the Purchasing Department.

If this bid requires a pre-bid conference (see Additional Requirements section), bidders are advised that such conference will be held to allow bidders the opportunity to identify any discrepancies in the bid specifications and seek further clarification regarding instructions. The Purchasing Department will issue a written response to bidders' questions in the form of an Addendum.

All formal Addenda require written acknowledgment on the bid form by the bidder by the bidder placing the Addendum number in the appropriate section. Failure to acknowledge an Addendum on the bid form shall cause the bid to be rejected; JEFFERSON PARISH reserves the right to award bid to next lowest responsive and responsible bidder in this event.

USE OF BRAND NAMES AND STOCK NUMBERS: Where brand names and stock numbers are specified, it is for the purpose of establishing certain minimum standards of quality. Bids may be submitted for products of equal quality, provided brand names and stock numbers are specified. Complete product data may be required prior to award.

Quantities listed are for bidding purposes only. Actual requirements may be more or less than quantities listed.

INSTRUCTIONS FOR BIDDERS AND GENERAL CONDITIONS

Bidders are not to exclude from participation in, deny the benefits of, or subject to discrimination under any program or activity, any person in the United States on the grounds of race, color, national origin, or sex; nor discriminate on the basis of age under the Age Discrimination Act of 1975, or with respect to an otherwise qualified handicapped individual as provided in Section 504 of the Rehabilitation Act of 1973, or on the basis of religion, except that any exemption from such prohibition against discrimination on the basis of religion as provided in the Civil Rights Act of 1964, or Title VI and VII of the Act of April 11, 1968, shall also apply. This assurance includes compliance with the administrative requirements of the Revenue Sharing final handicapped discrimination provisions contained in Section 51.55 (c), (d), (e), and (k)(5) of the Regulations. New construction or renovation projects must comply with Section 504 of the 1973 Rehabilitation Act, as amended, in accordance with the American National Standard Institute's specifications (ANSI A1 17.1-1961).

Jefferson Parish and its partners as the recipients of federal funds are fully committed to awarding a contract(s) to firm(s) that will provide high quality services and that are dedicated to diversity and to containing costs. Thus, Jefferson Parish strongly encourages the involvement of minority and/or woman-owned business enterprises (DBE's, including MBE's, WBE's and SBE's) to stimulate participation in procurement and assistance programs.

IN ACCORDANCE WITH STATE REGULATIONS JEFFERSON PARISH OFFERS ELECTRONIC PROCUREMENT TO ALL VENDORS

This electronic procurement system allows vendors the convenience of reviewing and submitting bids online. This is a secure site and authorized personnel have limited read access only. Bidders are to submit electronically using this free service; while the website accepts various file types, one single PDF file containing all appropriate and required bid documents is preferred. Bidders submitting uploaded images of bid responses are solely responsible for clarity. If uploaded images/documents are not legible, then bidder's submission will be rejected. Please note all requirements contained in this bid package for electronic bid submission.

Please visit our E-Procurement Page at www.jeffparishbids.net to register and view Jefferson Parish solicitations. For more information, please visit the Purchasing Department page at <http://purchasing.jeffparish.net>.

ADDITIONAL REQUIREMENTS FOR THIS BID

PLEASE MATCH THE NUMBERS PRINTED IN THIS BOX WITH THE CORRESPONDING INSTRUCTIONS BELOW.

13

1. All bidders must attend the MANDATORY pre-bid conference and will be required to sign in and out as evidence of attendance. In accordance with LSA R.S. 38:2212(I), all prospective bidders shall be present at the beginning of the MANDATORY pre-bid conference and shall remain in attendance for the duration of the conference. Any prospective bidder who fails to attend the conference or remain for the duration shall be prohibited from submitting a bid for the project.
2. Attendance to this pre-bid conference is optional. However, failure to attend the pre-bid conference shall not relieve the bidder of responsibility for information discussed at the conference. Furthermore, failure to attend the pre-bid conference and inspection does not relieve the successful bidder from the necessity of furnishing materials or performing any work that may be required to complete the work in accordance with the specification with no additional cost to the owner.
3. Contractor must hold current applicable JEFFERSON PARISH licenses with the Department of Inspection and Code Enforcement. Contractor shall obtain any and all permits required by the JEFFERSON PARISH Department of Inspection and Code Enforcement. The contractor shall be responsible for the payment of these permits. All permits must be obtained prior to the start of the project. Contractor must also hold any and all applicable Federal and State licenses. Contractor shall be responsible for the payment of these permits and shall obtain them prior to the start of the project.
4. A LA State Contractor's License will be required in accordance with LSA R.S. 37-2150 et. seq. and such license number will be shown on the outside of the bid electronic envelope. Failure to comply will cause the bid to be rejected. When submitting the bid electronically, the license number must be entered in the appropriate field in the electronic procurement system. Failure to comply will cause the bid to be rejected.

INSTRUCTIONS FOR BIDDERS AND GENERAL CONDITIONS

5. It is the bidder's responsibility to visit the job site and evaluate the job before submitting a bid.
6. Job site must be clean and free of all litter and debris daily and upon completion of the contract. Passageways must be kept clean and free of material, equipment, and debris at all times. Flammable material must be removed from the job site daily because storage will not be permitted on the premises. Precaution must be exercised at all times to safeguard the welfare of JEFFERSON PARISH and the general public.
7. PUBLIC WORKS BIDS: All awards for public works in excess of \$5,000.00 will be reduced to a formal contract which shall be recorded at the contractor's expense with the Clerk of Court and Ex-Officio Recorder of Mortgages for the Parish of Jefferson. A price list of recordation costs may be obtained from the Clerk of Court and Ex-Officio Recorder of Mortgages for the Parish of Jefferson. All awards in excess of \$25,000.00 will require both a performance and a payment bond. Unless otherwise stated in the bid specifications, the performance bond requirements shall be 100% of the contract price. Unless otherwise state in the bid specifications, the payment bond requirements shall be 100% of the contract price. Both bonds shall be supplied at the signing of the contract.
8. NON-PUBLIC WORKS BIDS: A performance bond will be required for this bid. The amount of the bond will be 100% of the contract price unless otherwise indicated in the specifications. The performance bond shall be supplied at the signing of the contract.
9. NON-PUBLIC WORKS BIDS: A payment bond will be required for this bid. The amount of the bond will be 100% of the contract price unless otherwise indicated in the specifications. The payment bond shall be supplied at the signing of the contract.
10. All bidders must comply with the requirements stated in the attached "Standard Insurance Requirements" sheet attached to this bid solicitation. Failure to comply with this instruction will result in bid rejection.
11. A bid bond will be required with bid submission in the amount of 5% of the total bid, unless otherwise stated in the bid specifications. All sureties must be in original format (no copies). When submitting a bid online, vendors must submit an electronic bid bond through the respective online clearinghouse bond management system(s) as indicated in the electronic bid solicitation on Central Auction House. No scanned paper copies of any bid bond will be accepted as part of the electronic bid submission.
12. This is an as needed basis contract. JEFFERSON PARISH makes no representations on warranties with regard to minimum guaranteed quantities unless otherwise stated in the bid specifications.
13. Freight charges should be included in total cost when quoting. If not quoted FOB DELIVERED, freight must be quoted as a separate item. Bid may be rejected if not quoted FOB DELIVERED or if freight charges are not indicated on bid form.
14. PUBLIC WORKS BIDS - Completed, Signed and Properly Notarized Affidavits Required; This applies to all solicitations for construction, alteration or demolition of public buildings or projects, in conformity with the provisions contained in LSA-RS 38:2212.9, LSA-RS 38:2212.10, LSA-RS 38:2224, and Sec 2-923.1 of the Jefferson Parish Code of Ordinances. For bidding purposes, all bidders must submit with bid submission COMPLETED, SIGNED and PROPERLY NOTARIZED Affidavits, including: Non-Conviction Affidavit, Non-Collusion Affidavit, Campaign Contribution Affidavit, Debt Disclosures Affidavit and E-Verify Affidavit. For the convenience of vendors, all affidavits have been combined into one form entitled PUBLIC WORKS BID AFFIDAVIT. This affidavit must be submitted in its original format, and without material alteration, in order to be compliant and for the bid to be considered responsive. A scanned copy of the completed, signed and properly notarized affidavit may be submitted with the bid, however, the successful bidder must submit the original affidavit in its original format and without material alteration upon contract execution. Failure to comply will result in the bid submission being rejected as non-responsive. The Parish reserves the right to award bid to the next lowest responsive and responsible bidder in this event.
15. NON PUBLIC WORK BIDS - Completed, Signed and Properly Notarized Affidavits Required in conformity with the provisions contained in LSA – RS 38:2224 and Sec 2-923.1 of the Jefferson Parish Code of Ordinances. For bidding purposes, all bidders must submit with bid submission COMPLETED, SIGNED and PROPERLY NOTARIZED Affidavits, including: Non-Collusion Affidavit, Debt Disclosures Affidavit and Campaign Contribution Affidavit. For the convenience of vendors, all affidavits have been combined into one form entitled NON PUBLIC WORKS BID AFFIDAVIT. This affidavit must be submitted in its original format, and without material alteration, in order to be compliant and for the bid to be considered responsive. A scanned copy of the completed, signed and properly notarized affidavit may be submitted with the bid, however, the successful bidder must submit the original affidavit in its original format and without material alteration upon contract execution. Failure to comply will result in the bid submission being rejected as non-responsive. The Parish reserves the right to award bid to the next lowest responsive and responsible bidder in this event.

DATE: 10/05/2022

BID NO.: 50-00140005

Page: 4

INSTRUCTIONS FOR BIDDERS AND GENERAL CONDITIONS

16. The ensuing contract for this bid solicitation may be eligible for FEMA reimbursement and/or Federal funding/reimbursement. As such, the referenced appendix will be applicable accordingly and shall be considered a part of the bid documents. All applicable certifications must be duly completed, signed and submitted with bid submission. Failure to submit applicable certifications with bid submission will result in bid rejection.

17. For this project, the Contractor shall not pay any state or local sales or use taxes on materials and equipment which are affixed and made part of the immovable property of the project or which is permanently incorporated in the project (hereinafter referred to as "applicable materials and equipment"). All purchases of applicable materials or equipment shall be made by the contractor on behalf of and as the agent of Jefferson Parish (Owner), a political subdivision of the State of Louisiana. No state and local sales and use taxes are owed on applicable materials and equipment under the provisions of Act 1029 of the 1991 Regular Session - Louisiana Revised Statute 47:301(8)(c). Owner will furnish to contractor a certificate form which certifies that Owner is not required to pay such state or local sales and use taxes, and contractor shall furnish a copy of such certificate to all vendors or suppliers of the applicable materials and equipment, and report to Owner the amount of taxes not incurred.

It shall be the duty of every parish officer, employee, department, agency, special district, board, and commission: and the duty of every contractor, subcontractor, and licensee of the parish, and the duty of every applicant for certification of eligibility for a parish contract or program, to cooperate with the Inspector General in any investigation, audit, inspection, performance review, or hearing pursuant to Jefferson Parish Code of Ordinances Section 2-155.10(19). By submitting a bid, vendor acknowledges this and will abide by all provisions of the referenced Jefferson Parish Code of Ordinances.

DATE: 10/05/2022

INVITATION TO BID
THIS IS NOT AN ORDER

Page: 5

BID NO.: 50-00140005

JEFFERSON PARISH

PURCHASING DEPARTMENT
P.O. BOX 9
GRETN, LA. 70054-0009
504-364-2678

VENDOR: 27118 BLANK BID COPY VENDOR

BUYER: BBELLOW

As per LSA-RS 47:301 et seq., all governmental bodies are excluded from payment of sales taxes to any Louisiana taxing body. Quotations shall be based on F.O.B. Agency warehouse or jobsite, anywhere within the Parish as designated by the Purchasing Department.

JEFFERSON PARISH reserves the right to cancel all or any part of an order if not shipped promptly. No charges will be allowed for parking or cartage unless specified in quotation. The order must not be filled at a higher price than quoted. JEFFERSON PARISH reserves the right to cancel at any time and for any reason by issuing a THIRTY (30) day written notice to the contractor.

JEFFERSON PARISH is expecting all products to be new and all work to be done in workman-like manner, according to standard practices. Any deviations or alteration from the specifications must be indicated on the bid form for each item and upon request, product data for same must be submitted by the time specified by the Purchasing Department.

DELIVERY: FOB JEFFERSON PARISH

INDICATE DELIVERY DATE ON EQUIPMENT AND SUPPLIES _____

INDICATE STARTING TIME (IN DAYS) FOR CONSTRUCTION WORK _____

INDICATE COMPLETION TIME (IN DAYS) FOR CONSTRUCTION WORK _____

In the event that addenda are issued with this bid, bidders MUST acknowledge all addenda on the bid form. Bidder must acknowledge receipt of an addendum on the bid form by placing the addendum number as indicated. Failure to acknowledge any addendum on the bid form will result in bid rejection.


Acknowledge Receipt of Addenda: NUMBER: _____

NUMBER: _____

NUMBER: _____

NUMBER: _____

LOUISIANA CONTRACTOR'S LICENSE NO.: (if applicable) _____

*** ALL BIDDERS MUST COMPLETE SECTION BELOW ***	
FIRM NAME: Lotus USA Inc	
SIGNATURE: (Must be signed here) 	TITLE: Vice President
PRINT OR TYPE NAME: Prasad Yalamanchi	
ADDRESS: 445 S. Figueroa Street 31st Floor STE 3121	
CITY, STATE: Los Angeles CA	ZIP: 90071
TELEPHONE: (213) 943-3957	FAX: ()
EMAIL ADDRESS: sivaprasad@lotususainc.com	

TOTAL PRICE OF ALL BID ITEMS: \$ 13,580.00

INVITATION TO BID FROM JEFFERSON PARISH - continued

BID NO.: 50-00140005

SEALED BID

ITEM NUMBER	QUANTITY	U/M	DESCRIPTION OF ARTICLES	UNIT PRICE QUOTED	TOTALS
1	1.00	ONLY	<p>ONE TIME PURCHASE OF DETECTION CAMERAS FOR JEFFERSON PARISH TRAFFIC ENGINEERING</p> <p>0010 4-WAY VIVDS KIT WITH ETHERNET</p> <p>ITEM # ITSP-PM 120CVES-4</p> <p>INCLUDING: 4 SINGLE CHANNEL PROCESSOR #ITSP-V100 1 SURGE SUPPRESSION PANEL FOR 6 CAMERAS #ITSP-SSP-6 1 1000FT SIAMESE COAX RS 285 CABLE #ITSP-RCABLE 5 RG-59 BNC CONNECTOR #ITSP-BNCS 4 6FT BNC TO BNC CABLE #ITSP-6FTCABLE 4 HD VIVDS A/C CAMERA WITH DIGITAL ZOOM #ITSP-PM120CR</p>	\$ <u>11,995.00</u>	\$ <u>11,995.00</u>
2	1.00	ONLY	<p>0020 INSTALLATION KIT</p> <p>ITSP-DELUXE KIT</p>	\$ <u>1,585.00</u>	\$ <u>1,585.00</u>
3	1.00	ONLY	<p>0030 SHIPPING & HANDLING</p> <p>TO BE DELIVERED TO: JEFFERSON PARISH TRAFFIC ENGINEERING 2100 DICKORY AVE. HARAHAN, LA 70123</p> <p>*** SEE ATTACHED SPECS ***</p>	\$ <u>0.0</u>	\$ <u>0.0</u>
<p>Note:</p> <p>Lead time: 4-6 Weeks ARO</p> <p>Shipping is included</p> <p>Quote validity: 11/10/2022</p>					

**DEPARTMENT OF ENGINEERING
TRAFFIC ENGINEERING DIVISION**

Specifications for Detection Cameras

ITSP-V100 "Lighting Series" VIVDS Cards
 Single channel VIVDS Card
 Input Voltage: 12-24 VDC
 Power Consumption: 1.5W
 Programming Via: USB mouse/analog video monitor, or Laptop PC
 Video/Data Outputs: NTSC, MJPEG or RS232
 Card Outputs: 4 relay outputs
 30 detection zones with flexible logic for mapping to relay outputs
 2 weeks of stored data in 15 minute increments
 NTSC input via BNC
 Exceeds TS2 Electrical/Environmental cabinet specs
 ISO9001:2000 Certified manufacturing

Includes:

- Single Channel Processor
- Surge Suppression Panel for 6 cameras
- 1000 ft Siamese Coax RS 285 cable
- RG-59 BNC connector
- 6 ft BNC to BNC cable
- HD VIVDS A/C camera with digital zoom

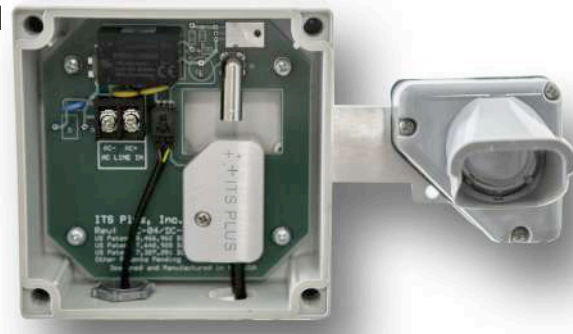
To be delivered to:
 2100 Dickory Ave.
 Harahan, LA 70123

Specifications



"Lightning Series" Analog/Digital Camera with OMT

- **Higher Performance** Than Traditional VIVDS Cameras
 - **OMT** Provides Thermal Camera Like Performance
 - **BNC Less Connector Option:** 15 Seconds to Install
 - **Advanced Surge Protection**
 - 20x Digital Zoom
 - "Never Clean" Lens
 - Rated to 140 mph
 - Superior Performance and Reliability
 - Keeps semiconductors 50F cooler
 - ISO9001:2000 Certification
 - Exceeds NEMA TS2 Cabinet Specifications
 - 3 Year Warranty
 - Lowest Power: 1.4 W
 - Lowest Weight: 2 lbs
 - **Interoperable With All Major VIVDS Suppliers**
 - **Total Cost of Ownership: 3x Less Than Traditional Cameras**



Camera With BNC-less Connector

Analog and Digital Outputs Coupled with Optical Mask Technology (OMT)

ITS Plus' multi-patented 7th generation camera combines both analog and HD digital video outputs into a single device. Designed to work with current analog VIVDS detection cards as well as ITS Plus's next generation digital VIVDS cards. It is one camera that does it all.

Optical Mask Technology blocks bright light sources (sun, vehicle hi beams, glare) while producing high contrast "edges" on moving vehicles. Outperforms thermal cameras at every turn. The combination increases vehicle detection performance while improving ease of set up.

A BNC less connector system means cutting installation time in half. The innovative camera architecture virtually eliminates the need for lens cleaning and re-alignment even under the harshest conditions. Connector failure, power supply failure and water leakage are also virtually eliminated.

Upgrade Your VIVDS System Simply by Upgrading Your Camera

The combination of a sharper single lens camera, "never clean" lens cover and OMT improves the performance of any VIVDS system. Designed to be interoperable with all the major VIVDS suppliers an agency can upgrade the performance of their intersection by simply adding the ITS Plus camera. Applications include stop bar/advanced detection, speed, occupancy, vehicle/bicycle counting and adaptive control.



Morning Glare Washing Out FOV

OMT Blocks the Glare From Sky/Sun While Generating "Edges" on the Vehicles

"Lightning Series" Analog/Digital Camera with OMT

<u>Part Number</u>	<u>Description</u>
ITSP-PM120C	ITS Plus, Pole Mount, 120 VAC, Coaxial Communications Warranty: 2 years
ITSP-PM24C	ITS Plus, Pole Mount, 12 - 24 VDC, Coaxial Communications Warranty: 3 years



Top View: Mounted on a U Bracket

Camera Specifications

- Analog or Digital HD 1080p Outputs
- 1/3 inch 2.1 Mega Pixel CMOS
- Optical Mask Technology (OMT)
- Resolution: 1080 lines
- NTSC, RS170A, 1 Vp-p 75 ohm video
- 0.1 Lux Min at Night to Over 10,000 Lux Daytime
- S/N Ratio = 60 dB
- AGC = 12 - 60dB
- Automatic Electronic Shutter 1/30 to 1/30,000 sec
- Power Consumption = 1.4 W
- Operating Temperature: -40C to 74C
- Surge Protection: Over 3,000V
- Meets FCC Part 15, Subpart B
- Effective Pixel: 1,944H, 1,092V
- Zoom: 20x

Micro Video Monitor

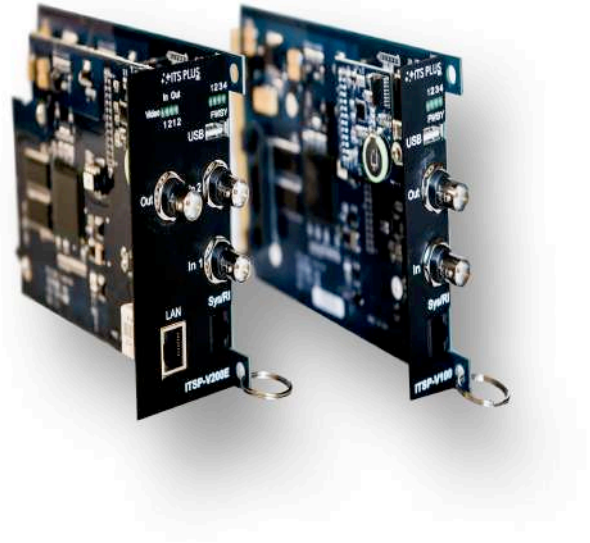
<u>Part Number</u>	<u>Description</u>
ITSP-MVM	Hand held battery operated color micro video monitor Weight: 3.5 ounces, Dimensions: 4.4" x 1.7" x 1.3" Warranty: 1 year



ITS Plus Products are Designed and Manufactured in the USA

"Lighting Series" VIVDS Cards

- **Single or Dual Channel**
 - Dual Channel Card Includes Complimentary Ethernet
 - Monitor and Adjust Detection From a TMC
 - "Circle Zone" Technology
 - Enables 1,000 ft Advanced Detection
 - Vehicle/Bicycle Speed and Counting
 - Adaptive Control
 - Optional SLDC With 128 Outputs
 - FHWA Performance Metrics
 - TS1, TS2, ATC and 170/2070 compatible



Single and Dual Channel
ITSP-V100 and ITSP-V200E

ITS Plus VIVDS Cards

Typical 24 hour performance is zero missed vehicles and 99% accuracy (1% occasional shadow trip/hung line). Because of this performance ITS Plus software has been stable since 2015 with no updates. The innovative design creates ease of programming, high performance, coupled with an extremely attractive price point.

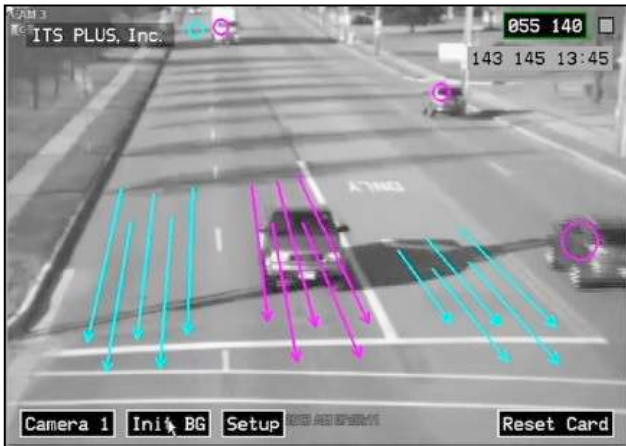
Two distinct methods of detection; because no single technology can do everything.

Line Zones are designed for stop bar detection. A simple mouse/monitor set up allows for an intuitive 3 step programming.

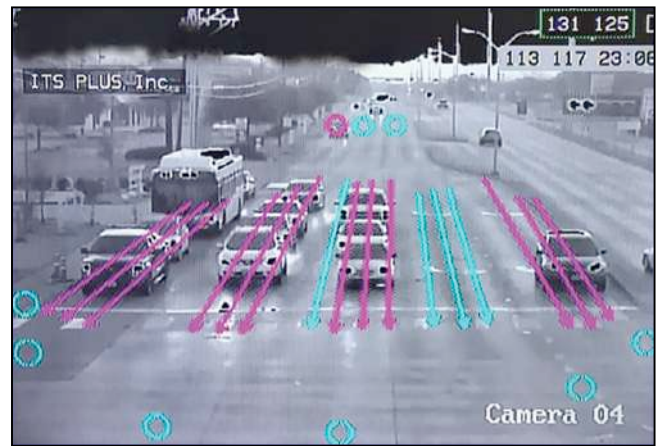
Circle Zones are virtual loops optimized for Adaptive Control, Advanced Detection, Ramp Metering and Vehicle/Bicycle counting. The unique technology enables advanced detection to 1,000 ft. coupled with accurate counts. Two weeks of data can also be store on the card in 15 minute increments.

Optical Mask Technology (OMT) + Circle Zones + 128 Outputs = Performance Metrics

OMT blocks bright light sources in the field of view while generated high contrast "edges" on moving vehicles. This produces a larger "flight envelope" in terms of detection performance and ease of set up. Coupled with our Circle Zone Technology and 128 Output SDLC we provide the recipe for generated the Performance Metrics required by the FHWA. Think of it as the best features of radar and thermal with the ease of installation of video and you have the unbeatable **Lightning Series** from ITS Plus.



Simultaneously performing Vehicle Counts
Stop Bar and Advanced Detection.
Ideal for Adaptive Control.



OMT blocks high intensity light sources (sun, headlights, traffic lights) while generating high contrast edges on vehicles. Coupled with 12 outputs for FHWA Performance Metrics.

"Lighting Series" VIVDS Cards - Specifications

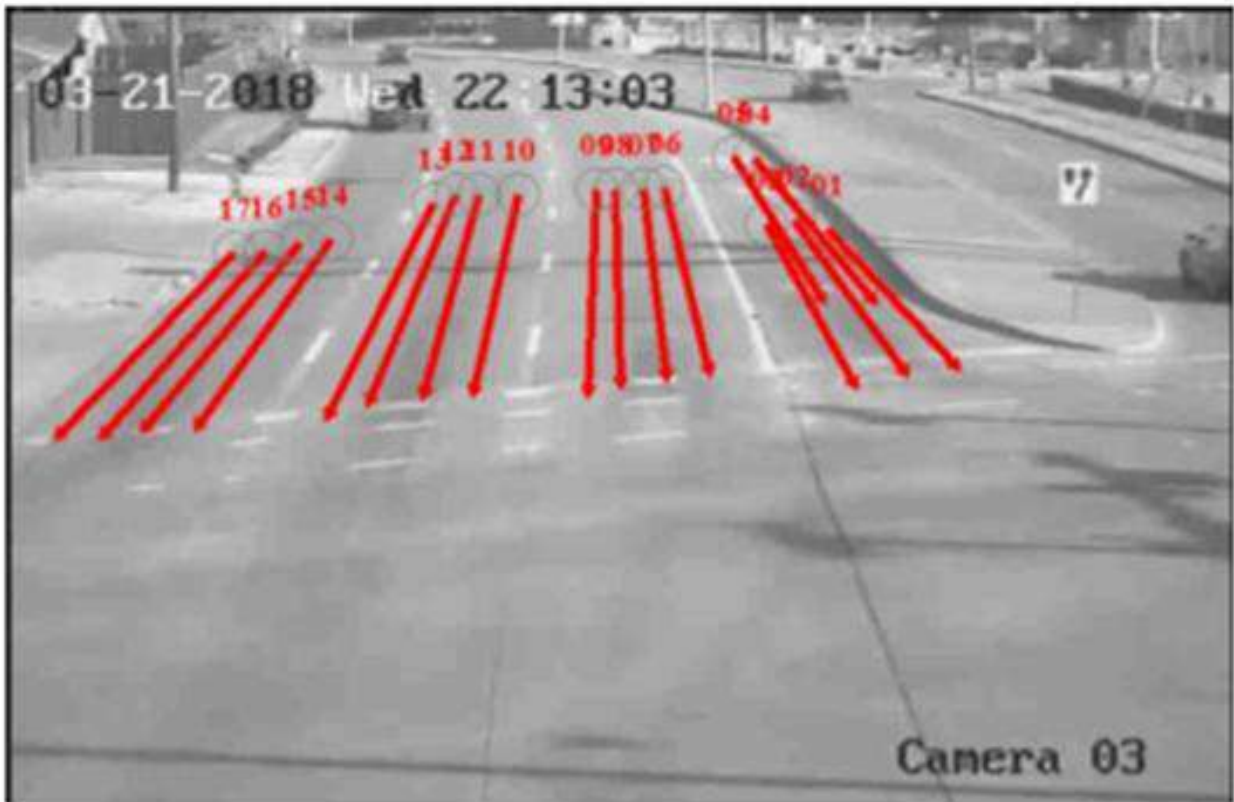
ITSP-V100

- Single Channel VIVDS Card
- Input Voltage: 12 – 24 VDC
- Power Consumption: 1.5 W
- Programming Via: USB mouse/analog video monitor, or Laptop PC
- Video/Data Outputs: NTSC, MJPEG or RS232
- Card Outputs: 4 relay outputs
- 30 detection zones with flexible logic for mapping to relay outputs
- 2 weeks of stored data in 15 minute increments
- NTSC input via BNC
- Exceeds TS2 Electrical/Environmental cabinet specs
- ISO9001:2000 Certified manufacturing

ITSP-V200E

- Dual Channel VIVDS Card with Ethernet Output
- Input Voltage: 12 – 24 VDC
- Power Consumption: 2.5W
- Programming Via:
 - USB mouse/analog video monitor, or Laptop PC, or
 - PC at TMC (if connected by Ethernet)
- Video/Data Outputs: NTSC, MJPEG, RS232 or Ethernet
- Card Outputs: 4 relay outputs
- 30 detection zones with flexible logic for mapping to relay outputs
- Exceeds TS2 Electrical/Environmental cabinet specs
- ISO9001:2000 Certified manufacturing

Drawing Lines for Optimum Performance



Does your image look like this? If not, follow these simple instructions:

Center the camera between the Left and Thru lanes

Point the camera below the horizon

Draw 3-5 lines per lane in Thru Lanes

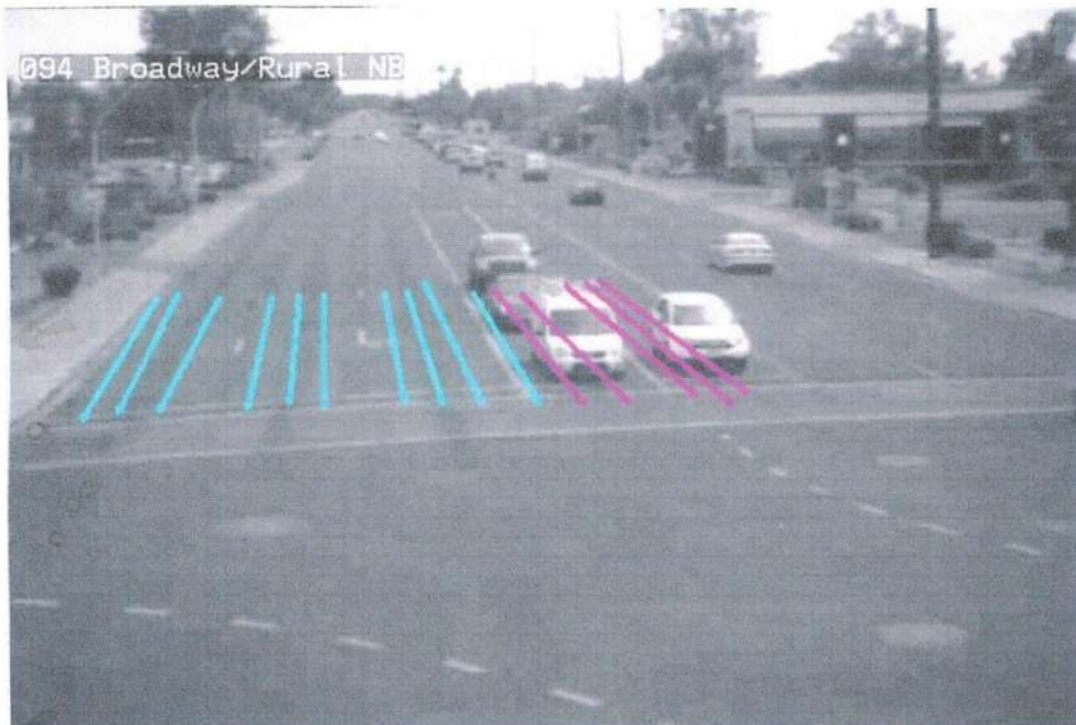
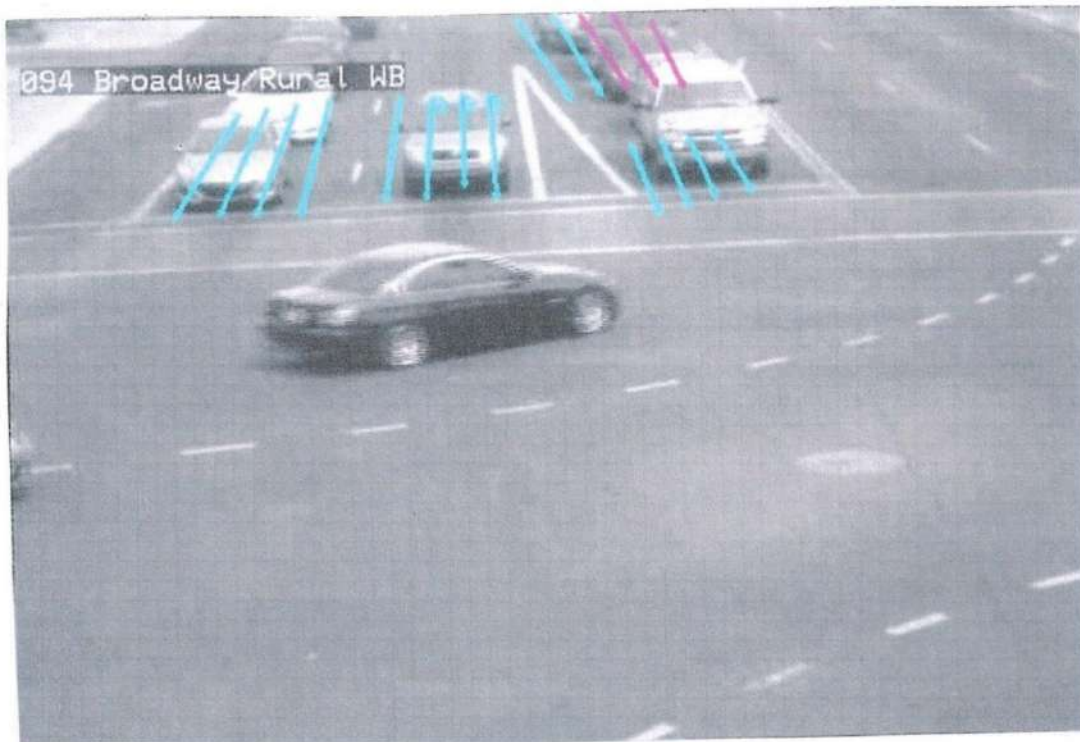
Draw lines over where the headlights will fall

Draw 5-7 lines in Left Hand Turn Lanes with at least 2 of those lines stacked 1 car length back

Draw lines 1 ½ to 2 car lengths long of 1/3rd the height of the screen (whichever is longer)

Minimize drawing over prominent road markings (especially if using mask)

Examples of bad camera angles and lines:



ITSP-V100 and V200E

“Quick Set-up”

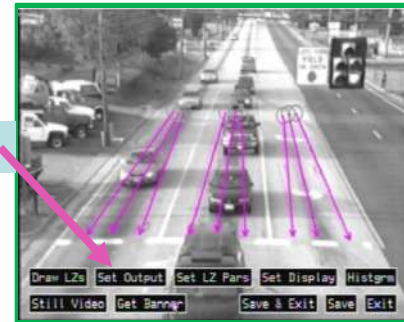
1

Plug Monitor into BNC Output.
Plug Mouse into USB port.
Click “Set up”.



3

Click “Set Output”

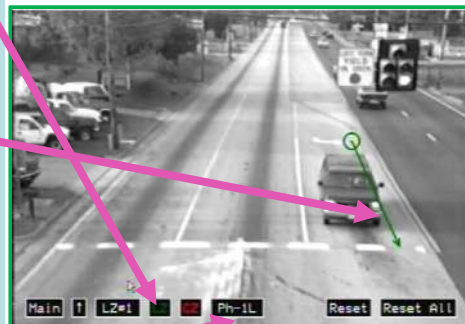


2

Click “Draw LZs” to draw up to 30 Line Zones (LZ) or Circle Zones (CZ).



Click “LZ” or “CZ”
Green = ON
Red = OFF
Left click and drag to draw Line Zones for presence detection.
Left click to place Circle Zones for vehicle counting or advanced detection.
Change Ph-No to proper phase (1L, 6T, etc.)



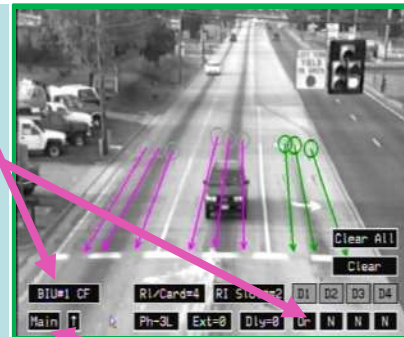
Select next LZ # and repeat until all lines drawn

Repeat until all Line Zones are Drawn



When Finished Click “Main”

If using T170 or SDLC, click BIU # CF down to select appropriate output.
Click Ph-No til phase lines turn green
Under D1, D2, D3 or D4, change “N” to “Or” (“OrM” depending on version) to output to corresponding rack slot
Repeat for each phase



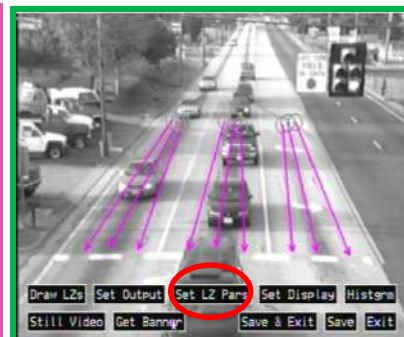
When Finished Click “Main”

Note:

Soft tabs are directional. Click to top half to scroll up, bottom half to scroll down.

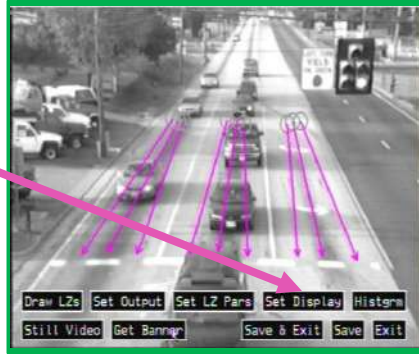


Set LZ Pars: Line Zone Parameters are to only be adjusted by ITS Plus Technical Staff.
Factory Settings are optimized for the majority of intersections.

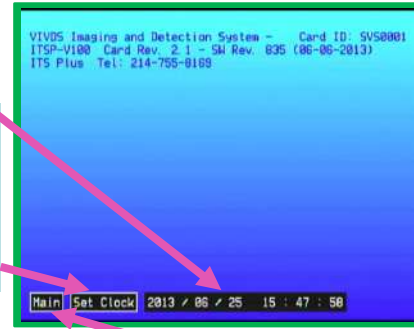


4

Click "Set Display"



Set the appropriate date/time then click "Set Clock"



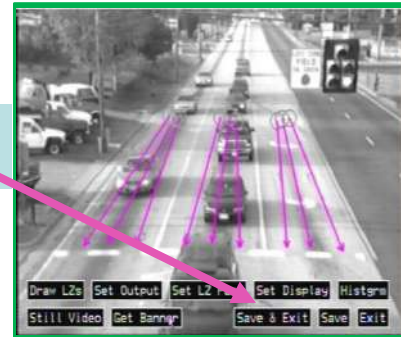
When Finished Click "Main"

Click and drag Fog Zone for Maximum Contrast Number. Best place for Fog Zone is on a sign away from traffic. When the Maximum Contrast Number goes below the "Vis Thr" setting, the card sends a constant output to the controller and the green box outline goes blue.



6

Click "Save & Exit"

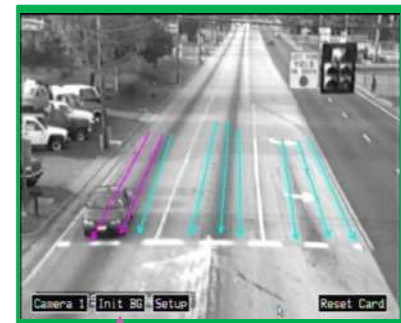
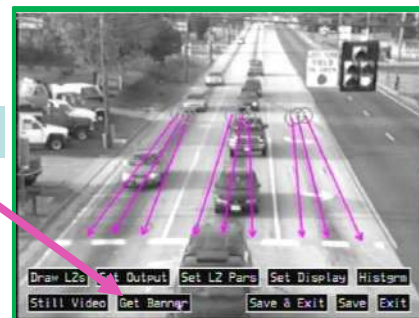


To enter the street location click "Edit". "BkSp" to retype street name then click "Enter". When completed click "Main". Note: One can click and drag the street label to any desired location on the screen.



5

Click "Get Banner"



Click "Init BG" to Initialize All LZ Backgrounds - only when there are no vehicles present in the detection zones. When clicked the card will "learn" the background / pavement markings. Without clicking "Init BG", card will learn in 2-3 cycles.