



CENTRALBIDDING
FROM CENTRAL AUCTION HOUSE

**5000123257 ONE TIME PURCHASE OF A 6 INCH SOLIDS HANDLING
COMPRESSOR ASSISTED DRY PRIME PUMP FOR JEFFERSON PARISH
DEPARTMENT OF SEWERAGE.**

Jefferson Parish Government

Project documents obtained from www.CentralBidding.com

19-Jun-2018 03:02:54 AM



Bid Number 50 - 123257

One time purchase of a 6 inch solids handling compressor assisted dry prime pump for Jefferson Parish Department of Sewerage.

June 28, 2018 AT 2:00 PM

ATTENTION VENDORS!!!

Please review all pages and respond accordingly, complying with all provisions in the technical specifications and Jefferson Parish Instructions for Bidders and General Terms and Conditions. All bids must be received in the Purchasing Department by the bid due date and time.

**Jefferson Parish Purchasing Department
200 Derbigny Street
General Government Building, Suite 4400
Gretna, LA 70053
Donna Reamey
Dreamey@Jeffparish.net
504-364-2684**

SPECIFICATIONS FOR BID # 50-00123257

6 INCH SOLIDS HANDLING COMPRESSOR ASSISTED DRY PRIME PUMP DEPARTMENT OF SEWERAGE MARRERO WASTEWATER TREATMENT PLANT

PART 1. GENERAL

The Vendor shall furnish one (1) six inch (6") diesel driven, solids handling, compressor-assisted, horizontal dry prime pump, Thompson Pump model 6JSCEE-DIST-4LE2T-M, or approved equal. The pump shall be of heavy-duty cast-iron construction. It shall be fast priming, solids handling, and trailer mounted. The pump shall be specifically designed for wastewater applications. It shall be designed for high flows, to 2450 gpm and heads to 120 feet for sewerage by-pass pumping. The pump shall be fully automatic, self-priming from dry conditions and capable of handling large volumes of air, water, and solids.

Two hours of on-site operational training for Department of Sewerage staff shall be included in the price of the bid.

1.2 QUALITY ASSURANCE

Pump is to be supplied by a Factory Authorized distributor who maintains a factory authorized warranty service center. An extensive parts inventory shall be maintained by the manufacturer such that all pump parts are available for during the life expectancy of the pump.

The complete pump package manufacturer shall be registered to ISO 9001:2008. A copy of the certificate shall be provided as a submittal with the bid.

The vendor shall provide a certified performance pump curve with plotted duty point, and the full range of the pump capabilities from the pump manufacturer.

The pump shall be manufactured in conformance with CPB-AEM Standards.

The pump manufacturer shall maintain a factory authorized warranty service center. This facility must stock spare pump parts.

The pump shall be factory tested according to ANSI/HI 1.61994 by a certified quality technician.

1.3 OPERATION & MAINTENANCE MANUALS

The vendor shall provide two spiral bound hard copies and one CD or flash drive copy of the pump operation and maintenance manual. The manual shall include installation, operation, and maintenance instructions, and spare parts lists that include manufacturer's stock or part number for each replaceable item. In addition, one standard maintenance manual from the engine manufacturer shall be provided.

SPECIFICATIONS FOR BID # 50-00123257

1.4 WARRANTY

The vendor shall provide manufacturer's standard warranty for equipment to be furnished. The pumping unit shall be warranted to be free of defects in design, materials, and workmanship for 1 year from factory shipment. Warranty registration forms shall be included with the operation and maintenance manuals.

A lifetime warranty shall apply to the venturi-ejector device, detailed in section 2.4.

PART 2. PRODUCTS

- A. Pump shall be Model 6JSCEE-DIST-4LE2T-M as manufactured by Thompson Pump and Manufacturing Co., Inc., or approved equal.
- B. The pump priming system shall prevent blow-by of sewage, effluent, and waste from discharging onto the ground. It shall allow the pump to automatically prime and re-prime without the need for any leak off pipes, waste hoses, or collection buckets to redirect or collect blow-by. The compressor priming system shall offer mid-range air handling capabilities for quick priming.
- C. Electric Brakes shall be provided.
- D. DOT Light Package shall be provided.

2.1 PUMP CONSTRUCTION MATERIALS

Pump Casing: 65-45-12 ductile iron, tangential discharge, clock-wise rotation, back pullout design

Impeller: 65-45-12 ductile iron, enclosed, 2-vane, 3 inch solids handling, balanced and contains rear equalizing vanes, 9.5 inch diameter

Mechanical Seal: Grease or oil lubricated single component type with Tungsten Carbide vs Silicon Carbide faces with Viton elastomers

Shaft: Modified SAE 1133 stress-proof steel

Bearings & Frame: Grease or oil lubricated, 6316 deep groove ball bearings. Class 30 cast iron, with cooling fins and mounting tabs.

Mounting: Modular fuel tank/frame with 100 gallon diesel fuel capacity, trailer mounted, with fenders, suspension, rear leveling jacks, tow bar, crank type front leveling jack.

Control panel: Control for electronically governed FT4 engine.

Fittings: 6 inch male cam-lock (6A-suction) x 6 inch male cam-lock (6A-discharge)

SPECIFICATIONS FOR BID # 50-00123257

2.2 ENGINE SPECIFICATIONS

- A. The engine shall be a EPA compliant, four cylinder, four-cycle, water cooled, turbo charged, Final Tier 4 diesel engine. The engine shall be capable of producing 40 continuous duty horsepower at 1,800 rpm. Engines not meeting the minimum horsepower and the Final Tier 4 emissions standard will not be accepted.
- B. The engine shall drive the pump via an elastomeric torsion drive coupling.
- C. The engine shall have an industrial type battery with 175-amp hour rating and minimum 990 cold-cranking amps, with 175 amp reserve, mounted in a lockable frame.
- D. A 12-volt starter and alternator charging system shall be provided.
- E. Engine shall have an industrial style muffler with rain cap.
- F. Engine shall have an electrical type governor.
- G. Engine shall have variable speed throttle control, via manual or automatic via float operation.
- H. Engine shall have safety shutdown switches for low oil pressure and high temperature.
- I. An instrument panel shall be provided and mounted on rubber isolators

Engine Model	Isuzu 4LE2T 40 HP @ 1800 rpm
Type	EPA Final Tier 4, In-line, 4-cycle, Turbocharged, high-pressure common-rail diesel
Standard Equipment	Cooled EGR, Wastegate Turbo-charger, emission control device, alternator, radiator
Automatic Shutdowns	Low lube oil pressure; high water temperature

2.3 CENTRIFUGAL PUMP

- A. The centrifugal pump shall be a horizontal end suction solids handling centrifugal pump model.
- B. The pump casing shall be constructed of ASTM A536 grade 65-45-12 ductile iron,

SPECIFICATIONS FOR BID # 50-00123257

tangential discharge, clockwise rotation (viewed from drive end), back pullout design, with cleanout.

C. The impeller shall be enclosed, 9.50 inch diameter with rear equalizing vanes and constructed of ASTM A536 grade 65-45-12 ductile iron.

D. The suction wear ring shall be of peripheral type requiring no adjustment and constructed of ASTM A536 grade 65-45-12 ductile iron.

E. The mechanical seal shall be a grease lubricated John Crane tungsten carbide vs. silicon carbide mechanical type with viton elastomers and type 18-8 stainless steel spring and hardware,

F. The seal chamber shall have a dished backplate to remove solids and abrasive material away from the seal area, and purge air and gas pockets. Grease shall be provided for automatically feeding lubricant to the seal faces, permitting indefinitely dry running.

G. The shaft shall be constructed of SAE 1144 stress proof steel, machined and polished to transmit full drive output.

H. The shaft sleeve shall be AISI 416 stainless steel. Sleeve designed to be renewable with O-ring and positively locked to prevent rotation on the shaft.

I. The bearing frame shall be constructed of ASTM A48 class 30 cast iron.

J. Bearings shall be of a sufficient size to withstand the radial and axial thrust loads incurred during service. Bearings shall have a minimum L-10 life of 100,000 hours. Bearings shall be grease lubricated.

K. Centrifugal pump shall be capable of the following performance duty point: 1,500 USGPM at 75 feet of TDH with a minimum 17 foot dynamic suction lift, and an 80 percent efficiency at this performance duty point. Products that fall below these minimum performance capabilities will not be accepted.

L. The centrifugal pump shall be capable of delivering 2,450 USGPM @ 47 feet of TDH at 2,000 rpm.

M. The centrifugal pump shall be capable of generating a closed discharge valve (shutoff) head of no less than 120 feet at 2,000 rpm.

N. The centrifugal pump shall be capable of handling up to a 3 inch diameter non-compressible spherical solid.

O. The pump inlet shall be equipped with a 6 inch male cam-lock connection.

P. The pump outlet shall be equipped with a 6 inch male cam-lock connection.

SPECIFICATIONS FOR BID # 50-00123257

Suction Size	6 inches (15.24 cm)
Discharge Size	6 inches (15.24 cm)
Maximum Flow Capacity	2450 gpm
Maximum Head	120 feet (36.58 m)
Maximum Solids Handling	3 inches (7.62 cm)
Maximum Operating Speed	2000 rpm
Maximum Operating Temperature	200 degrees Fahrenheit (93.33 degrees Celsius)
Maximum Operating Pressure	51.9 psi (358.17 kPa)
Approximate Dry Weight	4,100 lbs. (1859.73 kg)
Fuel Tank	100 gallons (378.54 L)
Fuel Consumption @ 2000 rpm	2.88 gph (10.9 L/h)
Best Efficiency Point	80%
Maximum Operating Times	Fuel Economy
34 hours @ 2000 rpm	0.396 lb/hp-hr @ 2000 rpm
44 hours @ 1800 rpm	0.386 lb/hp-hr @ 1800 rpm
58 hours @ 1600 rpm	0.372 lb/hp-hr @ 1600 rpm

2.4 PRIMING SYSTEM

- A. The priming system shall be fully automatic, eliminating the need to pre-fill the pump casing with water to achieve initial prime.
- B. An air separation chamber shall be provided to prevent any carryover of the pumping fluid into the venturi-ejector. Units requiring a bucket to collect carryover or a hose/pipe to recirculate carryover to the sump area will not be accepted.
- C. The air separation chamber shall contain a single float and ball valve assembly mounted on a steel plate that can be easily removed as a unit, without tools.

SPECIFICATIONS FOR BID # 50-00123257

- D. The air separation chamber shall not include any mesh-type screens that can clog with sewer debris and cause the priming system to fail.
- E. The compressor shall be industrial version, pressure lubricated type. Splash lubricated compressors will not be accepted.
- F. The compressor shall contain a pressure relief valve for overpressure protection.
- G. The priming system shall contain an in-line serviceable discharge 100 percent unrestricted flow area, with low head loss flapper valve design, non-return valve, which can be readily cleaned and repaired, without having to disconnect the discharge piping. Ball type discharge check valves will not be accepted.
- H. The Venturi shall be constructed of bronze and be of modular design, allowing for replacement of individual components. The Venturi shall be remote mounted on the frame, for ease of removal and inspection.
- I. The priming system shall incorporate a manual valve to permit the pump to operate under positive suction head conditions.
- J. The priming system shall be capable of automatically priming the pump with a 28 foot static suction lift with no water in the pump or suction piping.
- K. Priming systems that incorporate vacuum pumps or mechanical diaphragm priming systems will not be accepted.

2.5 MOUNTING FRAME

- A. The complete power unit shall be mounted on a combination frame/single wall fuel tank constructed of tubular steel, approximately 90 inches in length, approximately 48 inches in width, with a fuel capacity of 100 gallons.
- B. The frame shall incorporate an integral lifting ball capable of lifting the entire unit.
- C. Fuel tank shall have two clean-out ports located at opposite ends of the tank.
- D. Fuel tank shall have a removable basket strainer mounted in the fill port and a lockable cap.

2.6 TRAILER

- A. The complete pump set shall be factory mounted on a site trailer meeting NHTSA, DOT Part 571 standards 108, 119, and 120.
- B. Trailer shall include the following:
 - a. Single removable axle with leaf spring suspension capable of minimum of

SPECIFICATIONS FOR BID # 50-00123257

- 7,000 pound total weight capacity
- b. Electric brakes
- c. Two ST225/75 R15-D tires
- d. Removable tongue assembly with 3 inch adjustable lunette eye hitch and safety chains
- e. Removable steel diamond plate fenders
- f. One top wind swivel 5,000 pound capacity 15 inch retractable height tongue-mounted jack stand
- g. Two front and two rear stabilizing stands
- h. DOT light package including stop, turn, tail, and side marker lights, and license bracket

2.7 PUMP CONTROL PANEL

- A. An automatic engine controller shall be provided to start and stop the diesel engine in response to varying liquid levels via float switches.
- B. The automatic start-stop engine controller shall be part of the main instrument panel. Multiple control panels will not be accepted.
- C. The automatic engine controller shall be housed inside a UL Certified, NEMA 4x enclosure.
- D. The automatic engine controller display shall be fully visible, day or night, without the need to open the housing specified above.
- E. The automatic engine controller shall contain the RS485 and J1939 communication ports.
- F. The automatic engine controller shall be mounted on rubber shock mounts.
- G. The system shall contain a safety back-up feature allowing the unit to be operated manually and retain safety shutdown protection in the event of automatic engine controller failure.
- H. The automatic engine controller shall be fully field programmable and contain pass code protection.
- I. The automatic engine controller shall contain automatic and manual start modes.
- J. Records up to 32 events related to warning lights.
- K. The automatic start-stop system shall contain two mechanically activated hermetically sealed liquid level control floats; one to turn the pump on and one to turn the pump off. Single float designs that are prone to frequent cycling, leading to component wear will not be accepted.

SPECIFICATIONS FOR BID # 50-00123257

- L. The floats shall be clearly marked, top or bottom, for easy installation into wet well. Floats shall be provided with 50 feet of cable.
- M. The two floats shall be connected together with a single pin terminal for easy connection to the control box.

2.8 PAINTING

- A. A minimum 1-3 mil thick layer of industrial acrylic enamel primer shall be factory applied to the entire pump set prior to the finish coat.
- B. A minimum 2-3 mil thick layer of industrial acrylic enamel paint shall be factory applied over the primer coat.
- C. Finished pump set color shall be blue.
- D. Adjustable components and critical maintenance parts located on the pump set shall be painted red for easy identification purposes.

DATE: 6/13/2018

INVITATION TO BID
THIS IS NOT AN ORDER

Page: 1

BID NO.: 50-00123257

JEFFERSON PARISH

PURCHASING DEPARTMENT
P.O. BOX 9
GRETNA, LA. 70054-0009
504-364-2678

BUYER: DREAMEY@jeffparish.net

BIDS WILL BE RECEIVED IN THE WEST BANK PURCHASING DEPT, SUITE 4400, JEFFERSON PARISH GENERAL GOVERNMENT BUILDING, 200 DERBIGNY STREET, GRETNA, LA 70053 UNTIL 2:00 PM, 6/28/2018 AND PUBLICLY OPENED THEREAFTER.

For convenience, bidders may also submit bids in the East Bank Purchasing Department, Suite 404, Jefferson Parish Joseph S. Yenni Building, 1221 Elmwood Park Blvd., Jefferson LA 70123. However, if submitting bids on the day of bid opening, bidders must submit at the West Bank location only. All bids will be publicly opened at the West Bank location.

At no charge, bidders may also submit via Jefferson Parish's electronic procurement page by visiting www.jeffparishbids.net to register for this free site. Additional instructions are included in the text box highlighting electronic procurement.

LATE BIDS WILL NOT BE ACCEPTED

Unless submitting via online (see Page 3), each bid must be submitted in a sealed envelope bearing on the outside; the name of the Bidder, his address, and the name of the project for which the bid is submitted and the bid number.

NOTE: ONLY BIDS WRITTEN IN INK OR TYPEWRITTEN, AND PROPERLY SIGNED BY A MEMBER OF THE FIRM OR AUTHORIZED REPRESENTATIVE, WILL BE ACCEPTED. PENCIL AND/OR PHOTOSTATIC FIGURES OR SIGNATURES SHALL RESULT IN BID REJECTION.

INSTRUCTIONS FOR BIDDERS AND GENERAL CONDITIONS

THE FOLLOWING INSTRUCTIONS APPLY TO ALL BIDS

All bids submitted are subject to these instructions and general conditions and any special conditions and specifications contained herein, all of which are made part of this bid proposal reference. By submitting a bid, vendor agrees to comply with all provisions of Louisiana Law as well be in compliance with the Jefferson Parish Code of Ordinances, Louisiana Code of Ethics, applicable Jefferson Parish ethical standards and Jefferson Parish Resolution No. 113646 and/or Resolution No. 113647.

All vendors submitting bids should register as a Jefferson Parish vendor if not already yet registered. Registration forms may be downloaded from <http://purchasing.jeffparish.net> and by clicking on Vendor Information. Current W-9 forms with respective Tax Identification numbers and vendor applications may be submitted at any time; however, if your company is not registered and/or a current W-9 form is not on file, vendor registration is mandatory. Further, a current W-9 form and respective Tax Identification number must be supplied upon contract execution, should you be awarded a contract and/or issued purchase order. Failure to do so may result in delay of payment.

All quotations shall be based on F.O.B. Agency warehouse or job site, anywhere within the Parish as designated by the Purchasing Department. This provision does not apply to public works projects

JEFFERSON PARISH requires all products to be new (current) and all work must be performed according to standard practices for the project. Unless otherwise specified, no aftermarket parts will be accepted. Unless otherwise specified, all workmanship and materials must have at least one (1) year guaranty, in writing, from the date of delivery and/or acceptance of the project. Any deviations or alterations from the specifications must be indicated and/or supporting documentation supplied with bid submission.

Bidders should submit all questions in writing via email to the buyer's email address as indicated above, no later than Five (5) working days prior to the bid opening. Bid numbers should be mentioned in all requests. If submitting online, vendors may send questions via the E-Procurement site no later than Five (5) working days prior to the bid opening.

If this bid requires a pre-bid conference (see Additional Requirements section), bidders are advised that such conference will be held to allow bidders the opportunity to identify any discrepancies in the bid specifications and seek further clarification regarding instructions. The Purchasing Department will issue a written response to bidders' questions in the form of an Addendum. Please note that all official communication will be expressed in the form of an addendum.

All formal Addenda require written acknowledgement on the bid form by the bidder. Failure to acknowledge an Addendum on the bid form shall cause the bid to be rejected. JEFFERSON PARISH reserves the right to award bid to next lowest responsive and responsible bidder in this event.

The purpose and intention of this invitation to bid is to afford all suppliers an equal opportunity to bid on all construction, maintenance, repair, operating supplies and/or equipment listed in this bid proposal. JEFFERSON PARISH WILL ACCEPT ONE BID ONLY FROM EACH VENDOR. Items bid must meet specifications.

Visit our website at [HTTP://PURCHASING.JEFFPARISH.NET](http://PURCHASING.JEFFPARISH.NET)

JEFFERSON PARISH will accept one price for each item unless otherwise indicated. Two or more prices for one item will result in bid rejection. Bidders are required to complete, sign and return the bid form and/or complete and return the associated line item pricing forms as indicated. Vendors must not alter the bid forms. Doing so will cause the bid to be rejected.

A corporate resolution or written evidence of the individual signing the bid having such authority must be submitted with the bid. Failure to comply will cause bid to be rejected. For corporate entities, such written evidence may be a printout of the Louisiana Secretary of State's website listing the signatory as an officer. Such printout shall be included with the bid submission. Bids submitted by Owners or Sole Proprietorships must include certification that he or she owns the entity for which the bid is signed. This documentation must be submitted with the bid. Failure to do so will result in bid rejection.

NOTE: A sample corporate resolution can be downloaded from our website <http://purchasing.jeffparish.net> or you may provide your own document. A sample certification of sole proprietorship can also be downloaded from our website <http://purchasing.jeffparish.net> or you may provide your own document.

INSTRUCTIONS FOR BIDDERS AND GENERAL CONDITIONS

A. AWARD OF CONTRACT: JEFFERSON PARISH reserves the right to award contracts or place orders on a lump sum or individual item basis, or such combination, as shall in its judgment be in the best interest of JEFFERSON PARISH. Every contract or order shall be awarded to the LOWEST RESPONSIVE and RESPONSIBLE BIDDER, taking into consideration the CONFORMITY WITH THE SPECIFICATIONS and the DELIVERY AND/OR COMPLETION DATE. SPLIT AWARDS MADE TO SEVERAL VENDORS WILL ONLY BE GRANTED TO THOSE DEEMED RESPONSIVE AND RESPONSIBLE.

All bid prices shall remain valid for 45 days. Jefferson Parish and the lowest responsive and responsible bidder(s) by mutual written consent may mutually agree to extend the deadline for award by one (1) or more extensions of thirty (30) calendar days.

PROTESTS: Only those vendors that submitted a bid in response to this solicitation may submit a protest in writing to the Director of the Purchasing within 48 hours of bid opening. The Purchasing Director will review it in connection with the Parish Attorney's Office which will then respond in writing as soon as possible.

PREFERENCE: Unless federal funding is directly spent by Jefferson Parish for this purchase, preference is hereby given to materials, supplies, and provisions produced, manufactured or grown in Louisiana, quality being equal to articles offered by competitors outside the state. "LSA – R.S. 38:2251-2261"

B. USE OF BRAND NAMES AND STOCK NUMBERS: Where brand names and stock numbers are specified, it is for the purpose of establishing certain minimum standards of quality. Bids may be submitted for products of equal quality, provided brand names and stock numbers are specified. Complete product data may be required prior to award.

C. CANCELLATION OF CONTRACT: JEFFERSON PARISH reserves the right to cancel all or any part if not shipped promptly. No charges will be allowed for parking or cartage unless specified in quotation. The order must not be filled at a higher price than quoted. JEFFERSON PARISH reserves the right to cancel any contract at anytime and for any reason by issuing a THIRTY (30) day written notice to the contractor.

For good cause and as consideration for executing a contract with Jefferson Parish, vendor conveys, sells, assigns and transfers to Jefferson Parish or its assigns all rights, title and interest in and to all causes of action it may now or hereafter acquire under the antitrust laws of the United States and the State of Louisiana, relating to the particular good or services purchased or acquired by Jefferson Parish.

D. PRICES: Jefferson Parish is exempt from paying sales tax under LSA-R.S. 47:301 (8)(c). All prices for purchases by Jefferson Parish of supplies and materials shall be quoted in the unit of measure specified and unless otherwise specified, shall be exclusive of state and Parish taxes. The price quoted for work shall be stated in figures. In the event there is a difference in unit prices and totals, the unit price shall prevail.

Quantities listed are for bidding purposes only. Actual requirements may be more or less than quantities listed.

Bidders are not to exclude from participation in, deny the benefits of, or subject to discrimination under any program or activity, any person in the United States on the grounds of race, color, national origin, or sex; nor discriminate on the basis of age under the Age Discrimination Act of 1975, or with respect to an otherwise qualified handicapped individual as provided in Section 504 of the Rehabilitation Act of 1973, or on the basis of religion, except that any exemption from such prohibition against discrimination on the basis of religion as provided in the Civil Rights Act of 1964, or Title VI and VII of the Act of April 11, 1968, shall also apply. This assurance includes compliance with the administrative requirements of the Revenue Sharing final handicapped discrimination provisions contained in Section 51.55 (c), (d), (e), and (k)(5) of the Regulations. New construction or renovation projects must comply with Section 504 of the 1973 Rehabilitation Act, as amended, in accordance with the American National Standard Institute's specifications (ANSI A17.1-1961).

Jefferson Parish and its partners as the recipients of federal funds are fully committed to awarding a contract(s) to firm(s) that will provide high quality services and that are dedicated to diversity and to containing costs. Thus, Jefferson Parish strongly encourages the involvement of minority and/or woman-owned business enterprises (DBE's, including MBE's, WBE's and SBE's) to stimulate participation in procurement and assistance programs.

INSTRUCTIONS FOR BIDDERS AND GENERAL CONDITIONS

Advertised bids will be tabulated and a copy of the tabulation will be forwarded to each responding bidder.

IN ACCORDANCE WITH STATE REGULATIONS JEFFERSON PARISH OFFERS ELECTRONIC PROCUREMENT TO ALL VENDORS

This electronic procurement system allows vendors the convenience of reviewing and submitting bids online. This is a secure site and authorized personnel have limited read access only. Bidders are encouraged to submit electronically using this free service; while the website accepts various file types, one single PDF file containing all appropriate and required bid documents is preferred. Bidders submitting uploaded images of bid responses are solely responsible for clarity. If uploaded images/documents are not legible, then bidder's submission will be rejected. Please note all requirements contained in this bid package for electronic bid submission.

Please visit our E-Procurement Page at www.jeffparishbids.net to register and view Jefferson Parish solicitations. For more information, please visit the Purchasing Department page at <http://purchasing.jeffparish.net>.

The general specifications for construction projects and the purchase of materials, services and/or supplies are those adopted by the JEFFERSON PARISH Council by Resolution No. 113646 or 113647 dated 12/09/09. The general conditions adopted by this resolution shall be considered as much a part of this document as if they were written wholly herein. A copy may be obtained from the Office of the Parish Clerk, Suite 6700, Jefferson Parish General Government Building, 200 Derbigny Street, Gretna, LA 70053. You may also obtain a copy by visiting the Purchasing Department webpage at <http://purchasing.jeffparish.net> and clicking on Online Forms.

ADDITIONAL REQUIREMENTS FOR THIS BID

PLEASE MATCH THE NUMBERS PRINTED IN THIS BOX WITH THE
CORRESPONDING INSTRUCTIONS BELOW.

13 , 15

1. All bidders must attend the MANDATORY pre-bid conference and will be required to sign in and out as evidence of attendance. In accordance with LSA R.S. 38:2212(l), all prospective bidders shall be present at the beginning of the MANDATORY pre-bid conference and shall remain in attendance for the duration of the conference. Any prospective bidder who fails to attend the conference or remain for the duration shall be prohibited from submitting a bid for the project.
2. Attendance to this pre-bid conference is optional. However, failure to attend the pre-bid conference shall not relieve the bidder of responsibility for information discussed at the conference. Furthermore, failure to attend the pre-bid conference and inspection does not relieve the successful bidder from the necessity of furnishing materials or performing any work that may be required to complete the work in accordance with the specification with no additional cost to the owner.
3. Contractor must hold current applicable JEFFERSON PARISH licenses with the Department of Inspection and Code Enforcement. Contractor shall obtain any and all permits required by the JEFFERSON PARISH Department of Inspection and Code Enforcement. The contractor shall be responsible for the payment of these permits. All permits must be obtained prior to the start of the project. Contractor must also hold any and all applicable Federal and State licenses. Contractor shall be responsible for the payment of these permits and shall obtain them prior to the start of the project.
4. A LA State Contractor's License will be required in accordance with LSA R.S. 37-2150 et. seq. and such license number will be shown on the outside of the bid envelope. Failure to comply will cause the bid to be rejected. Additionally if submitting the bid electronically, then the license number must be entered in the appropriate field in the Electronic Procurement system. Failure to comply will cause the bid to be rejected.
5. It is the bidder's responsibility to visit the job site and evaluate the job before submitting a bid.
6. Job site must be clean and free of all litter and debris daily and upon completion of the contract. Passageways must be kept clean and free of material, equipment, and debris at all times. Flammable material must be removed from the job site daily because storage will not be permitted on the premises. Precautions must be exercised at all times to safeguard the welfare of JEFFERSON PARISH and the general public.

INSTRUCTIONS FOR BIDDERS AND GENERAL CONDITIONS

7. **PUBLIC WORKS BIDS:** All awards for public works in excess of \$5,000.00 will be reduced to a formal contract which shall be recorded at the contractor's expense with the Clerk of Court and Ex-Officio Recorder of Mortgages for the Parish of Jefferson. A price list of recordation costs may be obtained from the Clerk of Court and Ex-Officio Recorder of Mortgages for the Parish of Jefferson. All awards in excess of \$25,000.00 will require both a performance and a payment bond. Unless otherwise stated in the bid specifications, the performance bond requirements shall be 100% of the contract price. Unless otherwise state in the bid specifications, the payment bond requirements shall be 100% of the contract price. Both bonds shall be supplied at the signing of the contract.
8. **NON-PUBLIC WORKS BIDS:** A performance bond will be required for this bid. The amount of the bond will be 100% of the contract price unless otherwise indicated in the specifications. The performance bond shall be supplied at the signing of the contract.
9. **NON-PUBLIC WORKS BIDS:** A payment bond will be required for this bid. The amount of the bond will be 100% of the contract price unless otherwise indicated in the specifications. The payment bond shall be supplied at the signing of the contract.
10. All bidders must comply with the requirements stated in the attached "Standard Insurance Requirements" sheet attached to this bid solicitation. Prior to contract executions/purchase order issuance, the successful bidder will be required to provide final insurance certificates which shall name Jefferson Parish as an additional insured in accordance with the instructions in the aforementioned "Standard Insurance Requirements" sheet.
11. A bid bond will be required with bid submission in the amount of 5% of the total bid, unless otherwise stated in the bid specifications. Acceptable forms shall be limited to cashier's check, certified check, or surety bid bond. All sureties must be in original format (no copies) If submitting a bid online, vendors must submit an electronic bid bond through the respective online clearinghouse bond management system(s) as indicated in the electronic bid solicitation on Central Auction House. No scanned paper copies of any bid bond will be accepted as part of the electronic bid submission.
12. This is a requirements contract to be provided on an as needed basis. JEFFERSON PARISH makes no representations on warranties with regard to minimum guaranteed quantities unless otherwise stated in the bid specifications.
13. Freight charges should be included in total cost when quoting. If not quoted FOB DELIVERED, freight must be quoted as a separate item. Bid may be rejected if not quoted FOB DELIVERED or if freight charges are not indicated on bid form.
14. **PUBLIC WORKS BIDS - Completed, Signed and Properly Notarized Affidavits Required;** This applies to all solicitations for construction, alteration or demolition of public buildings or projects, in conformity with the provisions contained in LSA-RS 38:2212.9, LSA-RS 38:2212.10, LSA-RS 38:2224, and Sec 2-923.1 of the Jefferson Parish Code of Ordinances. For bidding purposes, all bidders must submit with bid submission COMPLETED, SIGNED and PROPERLY NOTARIZED Affidavits, including: Non-Conviction Affidavit, Non-Collusion Affidavit, Campaign Contribution Affidavit, Debt Disclosures Affidavit and E-Verify Affidavit. For the convenience of vendors, all affidavits have been combined into one form entitled PUBLIC WORKS BID AFFIDAVIT. This affidavit must be submitted in its original format, and without material alteration, in order to be compliant and for the bid to be considered responsive. A scanned copy of the completed, signed and properly notarized affidavit may be submitted with the bid, however, the successful bidder must submit the original affidavit in its original format and without material alteration upon contract execution. Failure to comply will result in the bid submission being rejected as non-responsive. The Parish reserves the right to award bid to the next lowest responsive and responsible bidder in this event.
15. **NON PUBLIC WORK BIDS - Completed, Signed and Properly Notarized Affidavits Required** in conformity with the provisions contained in LSA – RS 38:2224 and Sec 2-923.1 of the Jefferson Parish Code of Ordinances. For bidding purposes, all bidders must submit with bid submission COMPLETED, SIGNED and PROPERLY NOTARIZED Affidavits, including: Non-Collusion Affidavit, Debt Disclosures Affidavit and Campaign Contribution Affidavit. For the convenience of vendors, all affidavits have been combined into one form entitled NON PUBLIC WORKS BID AFFIDAVIT. This affidavit must be submitted in its original format, and without material alteration, in order to be compliant and for the bid to be considered responsive. A scanned copy of the completed, signed and properly notarized affidavit may be submitted with the bid, however, the successful bidder must submit the original affidavit in its original format and without material alteration upon contract execution. Failure to comply will result in the bid submission being rejected as non-responsive. The Parish reserves the right to award bid to the next lowest responsive and responsible bidder in this event.
16. The ensuing contract for this bid solicitation may be eligible for FEMA reimbursement and/or Federal funding/reimbursement. As such, the referenced appendix will be applicable accordingly and shall be considered a part of the bid documents. All applicable certifications must be duly completed, signed and submitted with bid submission. Failure to submit applicable certifications with bid submission will result in bid rejection.
17. For this project, the Contractor shall not pay any state or local sales or use taxes on materials and equipment which are affixed and made part of the immovable property of the project or which permanently incorporated in the project (hereinafter referred to as "applicable materials and equipment"). All purchases of applicable materials or equipment shall be made by the contractor on behalf of and as the agent of Jefferson Parish (Owner), a political subdivision of the State of Louisiana. No state and local sales and use taxes are owned on applicable materials and equipment under the provisions of Act 1029 of the 1991 Regular Session – Louisiana Revised Statute 47:301(8)(c). Owner will furnish contractor a certificate form which certifies that Owner is not required to pay such state or local sales and use taxes, and contractor shall furnish a copy of such certificate to all vendors or suppliers of the applicable materials and equipment

It shall be the duty of every parish officer, employee, department, agency, special district, board, and commission: and the duty of every contractor, subcontractor, and licensee of the parish, and the duty of every applicant for certification of eligibility for a parish contract or program, to cooperate with the Inspector General in any investigation, audit, inspection, performance review, or hearing pursuant to Jefferson Parish Code of Ordinances Section 2-155.10(19). By submitting a bid, vendor acknowledges this and will abide by all provisions of the referenced Jefferson Parish Code of Ordinances.

DATE: 6/13/2018

Page: 5

BID NO.: 50-00123257

BID FORM
Non Public Works

All Public Work Projects are required to use the Louisiana Uniform Public Work Bid Form

All prices must be held firm unless an escalation provision is requested in this bid. Jefferson Parish will allow one escalation during the term of the contract, which may not exceed the U.S. Bureau of Labor Statistics National Index for all Urban Consumers, unadjusted 12 month figure. The most recently published figure issued at the time an adjustment is requested will be used. A request must be made in writing by the vendor, and the escalation will only be applied to purchases made after the request is made.

Are you requesting an escalation provision?

YES _____ NO X _____

MAXIMUM ESCALATION PERCENTAGE REQUESTED _____ %

INITIAL BID PRICES WILL REMAIN FIRM THROUGH THE DATE OF 45 Days _____.

For the purposes of comparison of bids when an escalation provision is requested, Jefferson Parish will apply the maximum escalation percentage quoted by the bidder to the period to which it is applied in the bid. The initial price and the escalation will be used to calculate the total bid price. It will be assumed, for comparison of prices only, that an equal amount of material or labor is purchased each month throughout the entire contract.

DELIVERY: FOB JEFFERSON PARISH

INDICATE DELIVERY DATE ON EQUIPMENT AND SUPPLIES

14-18 Weeks ARO _____

LOUISIANA CONTRACTOR'S LICENSE NO.: (if applicable) Not Applicable _____

THIS SECTION MUST BE COMPLETED BY BIDDER:

FIRM NAME: Technology International, Inc. _____

ADDRESS: 1349 South International Pkwy, Suite 2411, _____

CITY, STATE: Lake Mary, Florida _____ ZIP: 32746 _____

TELEPHONE: (407) 359-2373 _____ FAX: (407) 359-2372 _____

EMAIL ADDRESS: tii@tii-usa.com _____

In the event that addenda are issued with this bid, bidders MUST acknowledge all addenda on the bid form. Bidder must acknowledge receipt of an addendum on the bid form as indicated. Failure to acknowledge any addendum on the bid form will result in bid rejection.

Acknowledge Receipt of Addenda: NUMBER: 0 _____

NUMBER: _____

NUMBER: _____

NUMBER: _____

TOTAL PRICE OF ALL BID ITEMS: \$ 49,937.00 _____

AUTHORIZED SIGNATURE:  _____

Naveed Habib _____

Printed Name

TITLE: Product Applications Engineer _____

SIGNING INDICATES YOU HAVE READ AND COMPLY WITH THE INSTRUCTIONS AND CONDITIONS.

NOTE: All bids should be returned with the BID NUMBER and BID OPENING DATE indicated on the outside of the envelope submitted to the Purchasing Department.

INVITATION TO BID FROM JEFFERSON PARISH - continued

BID NO.: 50-00123257

SEALED BID

ITEM NUMBER	QUANTITY	U/M	DESCRIPTION OF ARTICLES	UNIT PRICE QUOTED	TOTALS
1	1.00	EA	<p>ONE TIME PURCHASE OF A 6 INCH SOLIDS HANDLING COMPRESSOR ASSISTED DRY PRIME PUMP FOR JEFFERSON PARISH DEPARTMENT OF SEWERAGE.</p> <p>0010 - 6 inch Solids Handling Compressor-Assisted Trailer-Mounted</p> <p>Dry Prime Pump, 6 inch x 6 inch High Efficiency Thompson Model: 6JSCEE-DIST-4LE2T-M</p> <p>Performance: 2,450 GPM Max, 120 foot TDH Max, 82 percent best efficiency point Max. Solids Handling: 3 inch Solids (spherical) Impeller: 9.5 inch Enclosed, 65-45-12 ductile iron Engine: Final Tier 4, Isuzu 4LE2T, 40 HP at 1,800 RPM 4-cylinder, in-line, 4-cycle, water-cooled, turbo-charged, direct-injected Mounting: Modular fuel tank/frame with 100 gallon diesel fuel capacity, trailer mounted, with fenders, suspension, rear leveling jacks, tow bar, crank type front leveling jack Control Panel: Control for electronically governed FT4 engine Fittings: 6 inch Male Cam-Lock (6A-suction) x 6 inch Male Cam-Lock (6A-discharge) Dot Light Package: included Electric Brakes: included 2 Hours of on-site TPM Operational Training: Included</p> <p>SEE ATTACHED SPECIFICATIONS</p>	\$49,937.00	\$49,937.00
2	1.00	ONLY	0020 - Freight	Included	Included
***Please see our Equipment Proposal TII/LA/0618/9104 attached.					

CORPORATE RESOLUTION

EXCERPT FROM MINUTES OF MEETING OF THE BOARD OF DIRECTORS OF
Technology International
INCORPORATED.

AT THE MEETING OF DIRECTORS OF Technology International
INCORPORATED, DULY NOTICED AND HELD ON 01/02/18,
A QUORUM BEING THERE PRESENT, ON MOTION DULY MADE AND SECONDED. IT
WAS:

RESOLVED THAT Naveed Habib, BE AND IS HEREBY
APPOINTED, CONSTITUTED AND DESIGNATED AS AGENT AND ATTORNEY-IN-
FACT OF THE CORPORATION WITH FULL POWER AND AUTHORITY TO ACT ON
BEHALF OF THIS CORPORATION IN ALL NEGOTIATIONS, BIDDING, CONCERNS
AND TRANSACTIONS WITH THE PARISH OF JEFFERSON OR ANY OF ITS AGENCIES,
DEPARTMENTS, EMPLOYEES OR AGENTS, INCLUDING BUT NOT LIMITED TO, THE
EXECUTION OF ALL BIDS, PAPERS, DOCUMENTS, AFFIDAVITS, BONDS, SURETIES,
CONTRACTS AND ACTS AND TO RECEIVE ALL PURCHASE ORDERS AND NOTICES
ISSUED PURSUANT TO THE PROVISIONS OF ANY SUCH BID OR CONTRACT, THIS
CORPORATION HEREBY RATIFYING, APPROVING, CONFIRMING, AND ACCEPTING
EACH AND EVERY SUCH ACT PERFORMED BY SAID AGENT AND ATTORNEY-IN-
FACT.

I HEREBY CERTIFY THE FOREGOING TO BE
A TRUE AND CORRECT COPY OF AN
EXCERPT OF THE MINUTES OF THE ABOVE
DATED MEETING OF THE BOARD OF
DIRECTORS OF SAID CORPORATION, AND
THE SAME HAS NOT BEEN REVOKED OR
RESCINDED.



SECRETARY-TREASURER

06/28/18

DATE

Non-Public Works Bid Affidavit Instructions

- **Affidavit is supplied as a courtesy to Affiants, but it is the responsibility of the affiant to insure the affidavit they submit to Jefferson Parish complies, in both form and content, with federal, state and parish laws.**
- **Affidavit must be signed by an authorized representative of the entity or the affidavit will not be accepted.**
- **Affidavit must be notarized or the affidavit will not be accepted.**
- **Notary must sign name, print name, and include bar/notary number, or the affidavit will not be accepted.**
- **Affiant MUST select either A or B when required or the affidavit will not be accepted.**
- **Affiants who select choice A must include an attachment or the affidavit will not be accepted.**
- **If both choice A and B are selected, the affidavit will not be accepted.**
- **Affidavit marked N/A will not be accepted.**
- **It is the responsibility of the Affiant to submit a new affidavit if any additional campaign contributions are made after the affidavit is executed but prior to the time the council acts on the matter.**

Instruction sheet may be omitted when submitting the affidavit

Non-Public Works Bid

AFFIDAVIT

STATE OF Florida

PARISH/COUNTY OF Seminole

BEFORE ME, the undersigned authority, personally came and appeared: Naveed habib
_____, (Affiant) who after being by me duly sworn, deposed and said that
he/she is the fully authorized Product Applications Engineer of Technology International (Entity),
the party who submitted a bid in response to Bid Number 5000123257, to the Parish of
Jefferson.

Affiant further said:

Campaign Contribution Disclosures

(Choose A or B, if option A is indicated please include the required attachment):

Choice A _____ Attached hereto is a list of all campaign contributions, including the date and amount of each contribution, made to current or former elected officials of the Parish of Jefferson by Entity, Affiant, and/or officers, directors and owners, including employees, owning 25% or more of the Entity during the two-year period immediately preceding the date of this affidavit or the current term of the elected official, whichever is greater. Further, Entity, Affiant, and/or Entity Owners have not made any contributions to or in support of current or former members of the Jefferson Parish Council or the Jefferson Parish President through or in the name of another person or legal entity, either directly or indirectly.

Choice B x there are **NO** campaign contributions made which would require disclosure under Choice A of this section.

Debt Disclosures

(Choose A or B, if option A is indicated please include the required attachment):

Choice A _____ Attached hereto is a list of all debts owed by the affiant to any elected or appointed official of the Parish of Jefferson, and any and all debts owed by any elected or appointed official of the Parish to the Affiant.

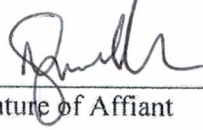
Choice B x There are **NO** debts which would require disclosure under Choice A of this section.

Affiant further said:

That Affiant has employed no person, corporation, firm, association, or other organization, either directly or indirectly, to secure the public contract under which he received payment, other than persons regularly employed by the Affiant whose services in connection with the construction, alteration or demolition of the public building or project or in securing the public contract were in the regular course of their duties for Affiant; and

[The remainder of this page is intentionally left blank.]

That no part of the contract price received by Affiant was paid or will be paid to any person, corporation, firm, association, or other organization for soliciting the contract, other than the payment of their normal compensation to persons regularly employed by the Affiant whose services in connection with the construction, alteration or demolition of the public building or project were in the regular course of their duties for Affiant.



Signature of Affiant

Naveed Habib Product Applications Engineer

Printed Name of Affiant

SWORN AND SUBSCRIBED TO BEFORE ME

ON THE 28th DAY OF June, 20 18.



Notary Public

Rifat Habib

Printed Name of Notary

GG 206022

Notary/Bar Roll Number



My commission expires 6/28/18



JEFFERSON PARISH

Department of Purchasing

Michael S. Yenni
Parish President

Renny Simno
Director

CHANGES TO JEFFERSON PARISH BIDDING PROCEDURES

The East bank Office of Purchasing is now open! We are located in the Joseph S. Yenni Building, 1221 Elmwood Park Blvd., Suite 404, Jefferson, LA 70123. Bidders may submit bid responses at this location, pending authorization in each bid package. **Bidders should carefully read and must respond accordingly per the requirements of the bid packages. NOTE: Bidders submitting bids on the day of bid opening, bidders must submit at the West Bank location only.**

Other Changes Continued:

- For all advertised sealed bids, written evidence of signature authority must be included with bid submission.
- Current W9 Forms and vendor applications may be submitted at any time; however, if your company is not registered and/or a current W-9 form is not on file, a current W-9 form must be supplied upon contract execution, should you be awarded a contract and/or issued a purchase order.
- Proof of insurance is required **with** bid submission. Bidders must read the insurance requirements attachment included in each bid package for specific instructions.
- Upon contract execution, successful bidder must produce final insurance certificates per standard Jefferson Parish insurance requirements. Bidders should reference the "Additional Requirements" section of the bid instructions and/or the "Important Notice to Bidders" included in the bid package for specific requirements to respond accordingly.

For more information, please call Jefferson Parish Purchasing at 504-364-2678.



Technology International, Inc.
1349 South International Pkwy, Suite 2411
Lake Mary, FL 32746
Tel: (407) 359-2373
Fax: (407) 359-2372
E-mail: tii@tii-usa.com
Website: www.tii-usa.com

Equipment Proposal

Title: One Time Purchase of a 6 Inch Solids Handling Compressor Assisted Dry Prime Pump
Bid #: 5000123257
Agency: Jefferson Parish Government
Our Ref: TII/LA/0618/9104
Date: 06/27/2018

In response to your quote request for One Time Purchase of a 6 Inch Solids Handling Compressor Assisted Dry Prime Pump, Technology International, Inc. is pleased to submit the following for consideration:

ITEM NO.	QTY	DESCRIPTION/ MODEL NO.	UNIT PRICE	EXTD. PRICE
1	1	Thompson Model # 6JSCEE-DIST-4LE2T-M 6" Solids Handling Compressor Assisted Trailer Mounted Dry Prime Pump – Training Included	\$49,937.00	\$49,937.00
See attached data sheets				
<u>Total price for all above.....\$49,937.00</u>				

Exclusions: Any item not included in our offer.

Warranty: Manufacturer's Standard warranty applies. See attached

Delivery:

- Estimated delivery is **14-18 WEEKS** ARO from customer and approved submittal
- All delivery dates quoted are tentative, based on current factory production schedule, subject to confirmation at time of order
- Submittal data, if applicable, will be provided for approval ARO

Freight: Freight included to Gretna, LA 70053

Payment Terms: 1/4% 10 days; NET 30

Validity of Quote: This quotation is valid for 45 days from date of quote.

***** Notes:** TII will deliver good title (MSO) to the Agency at the time of delivery. The Agency is responsible for its own title work and registration."

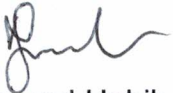
Technology International, Inc. Corporate data:

We are a small business and our Tax Payer Identification Number (TIN): 650342335. The above price quoted does not include any sales, excise or similar taxes. If applicable agency must accrue and remit it directly.

We trust that this proposal will meet your requirements and we look forward to hearing from you.

If you have any questions or need more information, please contact us by phone at 407-359-2373, fax at 407-359-2372 or email us at tii@tii-usa.com

Respectfully submitted,



Naveed Habib
Product Application Engineer
Technology International, Inc.

With its heavy-duty cast-iron construction and fast priming capabilities, this solids handling trailer mounted jet pump leads the industry in construction, industrial and mining applications. The Thompson 6JSCEE-DIST-4LE2T-M is designed for high flows to 2450 gpm and heads to 120 feet making it perfect for sewage bypass pumping or general construction dewatering

ENVIROPRIME SYSTEM® with Compressor

- Thompson's innovative priming system preventing blow-by of sewage, effluent and waste from discharging onto the ground. This system, with Thompson's compressor priming system, offers mid-range air handling capabilities for quick priming.

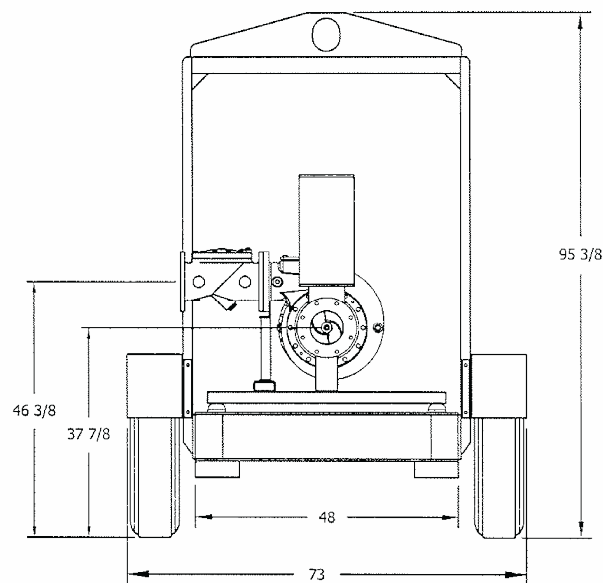
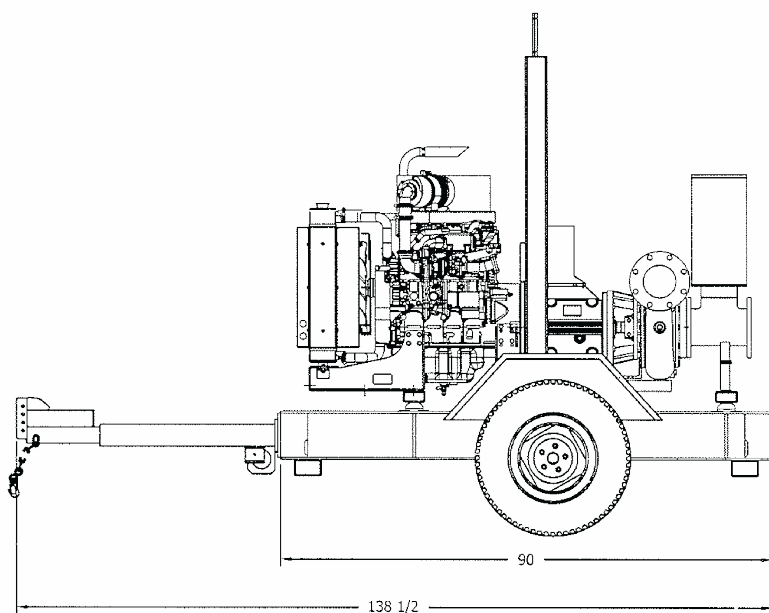
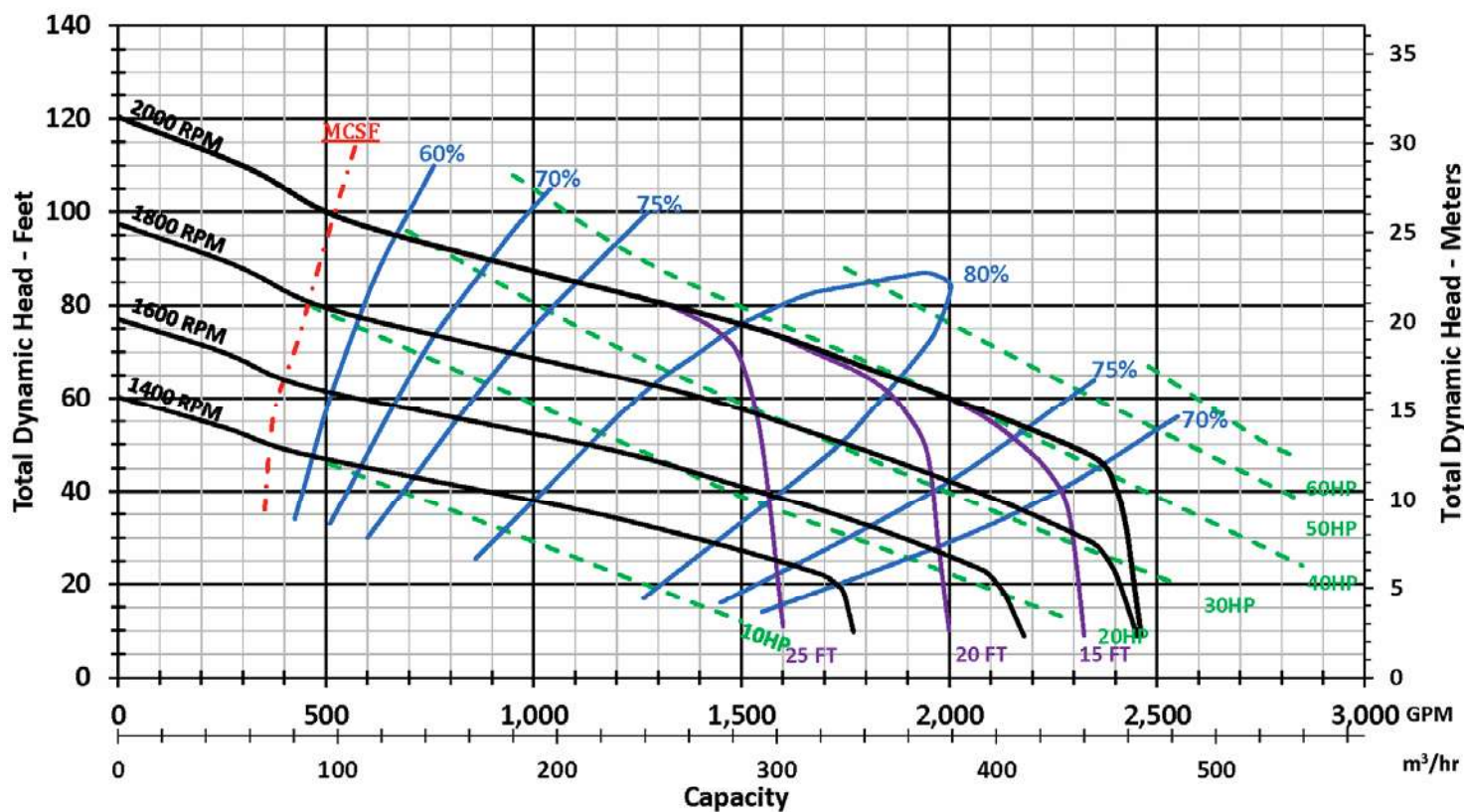


Consult factory for other versions & options including site trailers, sound attenuation, etc.

Materials	
Pump Casing	65-45-12 ductile iron, tangential discharge, clockwise rotation, back pullout design
Impeller	65-45-12 ductile iron*, closed or semi-open, 2-vane, 3" solids handling, balanced and contains rear equalizing vanes, 9.5" diameter
Mechanical Seal	Grease or oil lubricated single component type with Tungsten Carbide vs Silicon Carbide faces with Viton elastomers
Shaft	Modified SAE 1144 "stress-proof" steel
Bearings & Frame	Grease or oil lubricated, 6316 deep groove ball bearings. Class 30 Cast Iron with cooling fins and mounting tabs

TECHNICAL SPECIFICATIONS

Suction Size	6 in (15.24 cm)	Approximate Dry Weight	4,100 lbs (1859.73 kg)
Discharge Size	6 in (15.24 cm)	Fuel Tank	100 gal (378.54 L)
Maximum Flow Capacity	2450 gpm (556.15 m³/h)	Fuel Consumption @ 2000 rpm	2.88 gph (10.9 L/h)
Maximum Head	120 ft (36.58 m)	Best Efficiency Point	80 %
Maximum Solids Handling	3 in (7.62 cm)	Maximum Operating Times	Fuel Economy
Maximum Operating Speed	2000 rpm	34 hours @ 2000 rpm	0.396 lb/hp-hr @ 2000 rpm
Maximum Operating Temp.	200 °F (93.33 °C)	44 hours @ 1800 rpm	0.386 lb/hp-hr @ 1800 rpm
Maximum Operating Pressure	51.9 psi (358.17 kPa)	58 hours @ 1600 rpm	0.372 lb/hp-hr @ 1600 rpm



Engine Specification

Engine Model	Isuzu 4LE2T 40 HP @ 1800 rpm	Standard Equipment	Cooled EGR, Wastegate Turbo-charger, emission control device, alternator, radiator
Type	EPA Final Tier 4, In-Line, 4-Cycle, Turbocharged, high-pressure common-rail diesel	Automatic Shutdowns	Low lube oil pressure; high water temperature

Specifications and illustrations are subject to revision without notice and without incurring any obligation for previous or subsequent equipment sold. Thompson Pump (ISO 9001:2008) makes no representation regarding the completeness or accuracy of this information and is not liable for any direct or indirect damages arising from or relating to this information or its use. Capacity & Head are shown for comparative purposes. Consult Thompson factory for exact capabilities.



Limited Warranty Conditions of Sale

This **LIMITED WARRANTY** is extended only to the original consumer/purchaser of products manufactured by Thompson Pump & Mfg., Co., Inc., P.O. Box 291370, Port Orange, Florida, USA 32129-1370. Telephone number: 386-767-7310.

Thompson Pump & Mfg., Co. Inc., hereinafter referred to as "Thompson", warrants the products it manufactures to be free of defects in materials and workmanship. The warranty extends only to the original consumer/purchaser, hereinafter referred to as "Consumer", and commences on the date of sale to said Consumer and remains in effect for a period of twelve (12) months.

THIS WARRANTY DOES NOT COVER:

Adjustment or replacement of maintenance items and wear parts, such as but not limited to, seals, bearings, belts, lubrication and filters.

Any work performed to correct malfunction caused by misuse, negligence or disregard of Thompson's written instructions concerning installation, operation and maintenance of its products.

Additional service work performed above that which is required to satisfy warranty requirements.

Transportation charges, haul-out, travel time, loss of use, penalties or other consequential charges or damages.

Any damage caused by sand or abrasive materials, chemical deposits, corrosion, cavitation, hazardous waste or material, acts of God or other outside forces beyond the control of Thompson.

Engines, electric motors and other items not of our manufacture. Warranty on those items, if any, is the warranty of the manufacturer of such items.

Repairs, adjustments or replacements made without authorization from Thompson or repairs, adjustments or replacements made other than at a service facility designated by Thompson.

Delivery schedules are not covered by any warranty terms, and all dates given are approximate and subject to change without notice.

In the event of any claim of warranty, the Consumer must first obtain permission from the Thompson Factory Customer Service department and then deliver or ship the defective unit or parts, freight prepaid, to the authorized Thompson factory location or any of the Thompson authorized service centers. Thompson agrees that it will replace or repair (at our option) any such unit or parts where the defect results from a breach of its warranty without charge to the Consumer, provided said defect occurred within the warranty period. Thompson or the authorized service centers will not be responsible for the cost of the shipment of said unit or parts to or from Thompson's factory or service centers.

Thompson's warranty obligation with regard to equipment not of its own manufacture is limited to the warranty actually extended to Thompson by its suppliers. Thompson may assist the Consumer with obtaining warranty on an item that Thompson does not manufacture, but cannot guarantee approval of the warranty and will not be held liable. Should a failure of such motor, engine or other component occur during the warranty period, the Consumer must notify Thompson and follow the instructions given. **THIS WARRANTY DOES NOT COVER REPAIRS, ADJUSTMENTS OR REPLACEMENTS MADE WITHOUT NOTIFICATION TO, AND APPROVAL FROM, THOMPSON.**

THIS WARRANTY IS EXPRESSLY IN LIEU OF ANY OTHER EXPRESS OR IMPLIED WARRANTIES INCLUDING ANY IMPLIED WARRANTY OF MERCHANTABILITY OR FITNESS FOR A PARTICULAR PURPOSE AND OF ANY OTHER OBLIGATION ON THE PART OF THE SELLER. NO AGENT, EMPLOYEE OR REPRESENTATIVE OF THE SELLER HAS ANY AUTHORITY TO BIND THE SELLER TO ANY AFFIRMATIONS, REPRESENTATION OR WARRANTY CONCERNING THE PRODUCT SOLD UNDER THIS LIMITED WARRANTY. THERE ARE NO WARRANTIES WHICH EXTEND BEYOND THE DESCRIPTION ON THE FACE HEREOF. IMPLIED WARRANTIES, WHEN APPLICABLE, SHALL COMMENCE UPON THE SAME DATE AS THE EXPRESS WARRANTY ABOVE AND SHALL, EXCEPT FOR WARRANTIES OF TITLE, EXTEND ONLY FOR THE DURATION OF THE WARRANTY.

Some states do not allow limitations on how long the implied warranty lasts, so the above limitations may not apply to you. The only remedy provided to you under an applicable implied warranty or the express warranty shall be the remedy provided under the express warranty, subject to the terms and conditions contained therein. Thompson shall not be liable for incidental or consequential losses and damages under the express warranty, any applicable implied warranty or claim for negligence, except to the extent that this limitation is found to be unenforceable under applicable state law. Some states do not allow the exclusion or limitation of incidental or consequential damages, so the above limitation or exclusion may not apply to you. This warranty gives you specific legal rights, and you may also have other rights, which vary from state to state.