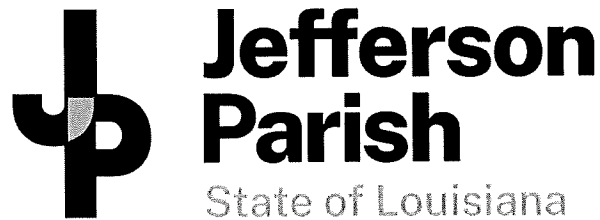




CENTRALBIDDING
FROM CENTRAL AUCTION HOUSE

**5000136519 One Time Purchase of Check Valves for the Westbank Public
Works Warehouse**
Jefferson Parish Government

Project documents obtained from www.CentralBidding.com
10-Nov-2021 03:42:43 PM



Bid Number 50-00136519

**One Time Purchase of Check Valves for the
Westbank Public Works Warehouse**

Bid Due: November 17, 2021 AT 11:00 AM

ATTENTION VENDORS!!!

Please review all pages and respond accordingly, complying with all provisions in the technical specifications and Jefferson Parish Instructions for Bidders and General Terms and Conditions. All bids must be received on the Purchasing Department's eProcurement site, www.jeffparishbids.net, by the bid due date and time. Late bids will not be accepted.

**Jefferson Parish Purchasing Department
200 Derbigny Street
General Government Building, Suite 4400
Gretna, LA 70053
Mark Buttery
MButtery@jeffparish.net
504-364-2810**

DATE: 11/10/2021

INVITATION TO BID
THIS IS NOT AN ORDER

Page: 1

BID NO.: 50-00136519

JEFFERSON PARISH

PURCHASING DEPARTMENT
P.O. BOX 9
GRETN, LA. 70054-0009
504-364-2678

VENDOR:

BUYER: MBUTTERY@jeffparish.net

Bids will be received until 11:00 AM, 11/17/2021 via online at www.jeffparishbids.net.

LATE BIDS WILL NOT BE ACCEPTED

NOTE: ONLY BIDS WRITTEN IN INK OR TYPEWRITTEN, AND PROPERLY SIGNED BY A MEMBER OF THE FIRM OR AUTHORIZED REPRESENTATIVE, WILL BE ACCEPTED. PENCIL AND/OR PHOTOSTATIC FIGURES OR SIGNATURES SHALL RESULT IN BID REJECTION. HOWEVER, ELECTRONIC SIGNATURES AS DEFINED IN LSA - R.S. 9:2602(8) ARE ACCEPTABLE. SIGNATURE MUST BE A SECURED DIGITAL SIGNATURE.

All bids submitted are subject to these instructions and general conditions and any special conditions and specifications contained herein, all of which are made part of this bid proposal reference. By submitting a bid, vendor agrees to comply with all provisions of Louisiana Law, as well be in compliance with the Jefferson Parish Code of Ordinances, Louisiana Code of Ethics, applicable Jefferson Parish ethical standards and Jefferson Parish Resolution No. 113646 and/or Resolution No. 113647 as amended. A copy of these resolutions may be obtained from the Office of the Parish Clerk, Suite 6700, Jefferson Parish General Government Building, 200 Derbigny Street, Gretna, LA 70053. You may also obtain a copy by visiting the Purchasing Department webpage at purchasing.jeffparish.net and clicking on On-line forms.

All vendors submitting bids should register as a Jefferson Parish vendor if not already yet registered. Registration forms may be downloaded from <http://purchasing.jeffparish.net> and by clicking on Vendor Information. Current W-9 forms with respective Tax Identification numbers and vendor applications may be submitted at any time; however, if your company is not registered and/or a current W-9 form is not on file, vendor registration is mandatory. Vendors may experience a delay in payment if your company is not a registered vendor with Jefferson Parish.

Jefferson Parish is exempt from paying sales tax under LSA-R.S. 47:301 (8)(c). All prices for purchases by Jefferson Parish of supplies and materials shall be quoted in the unit of measure specified and unless otherwise specified, shall be exclusive of state and local taxes. The price quoted for work shall be stated in figures. In the event there is a difference in unit prices and totals, the unit price shall prevail. Quotations shall be based on F.O.B. Delivered, anywhere within the Parish as designated by the Purchasing Department. JEFFERSON PARISH WILL ACCEPT ONE BID ONLY FROM EACH VENDOR. Items bid must meet specifications. JEFFERSON PARISH will accept one price for each item unless otherwise indicated. Two or more prices for one item will result in bid rejection. Bidders are required to complete, sign and return the bid form and/or complete and return the associated line item pricing forms as indicated. The price quoted for work shall be stated in figures. In the event there is a difference in unit prices and totals, the unit prices shall prevail

JEFFERSON PARISH reserves the right to award contracts or place orders on a lump sum or individual item basis, or such combination, as shall in its judgment be in the best interest of JEFFERSON PARISH. Every contract or order shall be awarded to the LOWEST RESPONSIVE and RESPONSIBLE BIDDER, taking into consideration the CONFORMITY WITH THE SPECIFICATIONS and the DELIVERY AND/OR COMPLETION DATE

PROTESTS: Only those vendors that submit bids in response to this solicitation may protest any element of the procurement, in writing to the Director of the Purchasing Department. Written protest must be received within 48 hours of the release of the bid tabulation by the Purchasing Department. After consultation, the Parish Attorney's Office will then respond to protests in writing. (For more information, please see Chapter 2, Article VII, Division 2, Sec. 2-914.1 of the Jefferson Parish Code of Ordinances.)

JEFFERSON PARISH reserves the right to cancel all or any part of an order if not shipped promptly. No charges will be allowed for parking or cartage unless specified in the quotation. The order must not be filled at a higher price than quoted. JEFFERSON PARISH reserves the right to cancel at any time and for any reason by issuing a THIRTY (30) day written notice to the contractor.

JEFFERSON PARISH requires all products to be new (current) and all work must be performed according to standard practices for the project. Unless otherwise specified, no aftermarket parts will be accepted. Unless otherwise specified, all workmanship and materials must have at least one (1) year guaranty, in writing, from the date of delivery and/or acceptance of the project. Any deviations or alteration from the specifications must be indicated on the bid form for each item and upon request, product data for same must be submitted by the time specified by the Purchasing Department.

If this bid requires a pre-bid conference (see Additional Requirements section), bidders are advised that such conference will be held to allow bidders the opportunity to identify any discrepancies in the bid specifications and seek further clarification regarding instructions. The Purchasing Department will issue a written response to bidders' questions in the form of an Addendum.

All formal Addenda require written acknowledgment on the bid form by the bidder by the bidder placing the Addendum number in the appropriate section. Failure to acknowledge an Addendum on the bid form shall cause the bid to be rejected; JEFFERSON PARISH reserves the right to award bid to next lowest responsive and responsible bidder in this event.

USE OF BRAND NAMES AND STOCK NUMBERS: Where brand names and stock numbers are specified, it is for the purpose of establishing certain minimum standards of quality. Bids may be submitted for products of equal quality, provided brand names and stock numbers are specified. Complete product data may be required prior to award.

Quantities listed are for bidding purposes only. Actual requirements may be more or less than quantities listed.

INSTRUCTIONS FOR BIDDERS AND GENERAL CONDITIONS

Bidders are not to exclude from participation in, deny the benefits of, or subject to discrimination under any program or activity, any person in the United States on the grounds of race, color, national origin, or sex; nor discriminate on the basis of age under the Age Discrimination Act of 1975, or with respect to an otherwise qualified handicapped individual as provided in Section 504 of the Rehabilitation Act of 1973, or on the basis of religion, except that any exemption from such prohibition against discrimination on the basis of religion as provided in the Civil Rights Act of 1964, or Title VI and VII of the Act of April 11, 1968, shall also apply. This assurance includes compliance with the administrative requirements of the Revenue Sharing final handicapped discrimination provisions contained in Section 51.55 (c), (d), (e), and (k)(5) of the Regulations. New construction or renovation projects must comply with Section 504 of the 1973 Rehabilitation Act, as amended, in accordance with the American National Standard Institute's specifications (ANSI A1 17.1-1961).

Jefferson Parish and its partners as the recipients of federal funds are fully committed to awarding a contract(s) to firm(s) that will provide high quality services and that are dedicated to diversity and to containing costs. Thus, Jefferson Parish strongly encourages the involvement of minority and/or woman-owned business enterprises (DBE's, including MBE's, WBE's and SBE's) to stimulate participation in procurement and assistance programs.

IN ACCORDANCE WITH STATE REGULATIONS JEFFERSON PARISH OFFERS ELECTRONIC PROCUREMENT TO ALL VENDORS

This electronic procurement system allows vendors the convenience of reviewing and submitting bids online. This is a secure site and authorized personnel have limited read access only. Bidders are to submit electronically using this free service; while the website accepts various file types, one single PDF file containing all appropriate and required bid documents is preferred. Bidders submitting uploaded images of bid responses are solely responsible for clarity. If uploaded images/documents are not legible, then bidder's submission will be rejected. Please note all requirements contained in this bid package for electronic bid submission.

Please visit our E-Procurement Page at www.jeffparishbids.net to register and view Jefferson Parish solicitations. For more information, please visit the Purchasing Department page at <http://purchasing.jeffparish.net>.

ADDITIONAL REQUIREMENTS FOR THIS BID

PLEASE MATCH THE NUMBERS PRINTED IN THIS BOX WITH THE CORRESPONDING INSTRUCTIONS BELOW.

13

1. All bidders must attend the MANDATORY pre-bid conference and will be required to sign in and out as evidence of attendance. In accordance with LSA R.S. 38:2212(l), all prospective bidders shall be present at the beginning of the MANDATORY pre-bid conference and shall remain in attendance for the duration of the conference. Any prospective bidder who fails to attend the conference or remain for the duration shall be prohibited from submitting a bid for the project.
2. Attendance to this pre-bid conference is optional. However, failure to attend the pre-bid conference shall not relieve the bidder of responsibility for information discussed at the conference. Furthermore, failure to attend the pre-bid conference and inspection does not relieve the successful bidder from the necessity of furnishing materials or performing any work that may be required to complete the work in accordance with the specification with no additional cost to the owner.
3. Contractor must hold current applicable JEFFERSON PARISH licenses with the Department of Inspection and Code Enforcement. Contractor shall obtain any and all permits required by the JEFFERSON PARISH Department of Inspection and Code Enforcement. The contractor shall be responsible for the payment of these permits. All permits must be obtained prior to the start of the project. Contractor must also hold any and all applicable Federal and State licenses. Contractor shall be responsible for the payment of these permits and shall obtain them prior to the start of the project.
4. A LA State Contractor's License will be required in accordance with LSA R.S. 37-2150 et. seq. and such license number will be shown on the outside of the bid electronic envelope. Failure to comply will cause the bid to be rejected. When submitting the bid electronically, the license number must be entered in the appropriate field in the electronic procurement system. Failure to comply will cause the bid to be rejected.

INSTRUCTIONS FOR BIDDERS AND GENERAL CONDITIONS

5. It is the bidder's responsibility to visit the job site and evaluate the job before submitting a bid.
6. Job site must be clean and free of all litter and debris daily and upon completion of the contract. Passageways must be kept clean and free of material, equipment, and debris at all times. Flammable material must be removed from the job site daily because storage will not be permitted on the premises. Precaution must be exercised at all times to safeguard the welfare of JEFFERSON PARISH and the general public.
7. PUBLIC WORKS BIDS: All awards for public works in excess of \$5,000.00 will be reduced to a formal contract which shall be recorded at the contractor's expense with the Clerk of Court and Ex-Officio Recorder of Mortgages for the Parish of Jefferson. A price list of recordation costs may be obtained from the Clerk of Court and Ex-Officio Recorder of Mortgages for the Parish of Jefferson. All awards in excess of \$25,000.00 will require both a performance and a payment bond. Unless otherwise stated in the bid specifications, the performance bond requirements shall be 100% of the contract price. Unless otherwise state in the bid specifications, the payment bond requirements shall be 100% of the contract price. Both bonds shall be supplied at the signing of the contract.
8. NON-PUBLIC WORKS BIDS: A performance bond will be required for this bid. The amount of the bond will be 100% of the contract price unless otherwise indicated in the specifications. The performance bond shall be supplied at the signing of the contract.
9. NON-PUBLIC WORKS BIDS: A payment bond will be required for this bid. The amount of the bond will be 100% of the contract price unless otherwise indicated in the specifications. The payment bond shall be supplied at the signing of the contract.
10. All bidders must comply with the requirements stated in the attached "Standard Insurance Requirements" sheet attached to this bid solicitation. Failure to comply with this instruction will result in bid rejection.
11. A bid bond will be required with bid submission in the amount of 5% of the total bid, unless otherwise stated in the bid specifications. All sureties must be in original format (no copies). When submitting a bid online, vendors must submit an electronic bid bond through the respective online clearinghouse bond management system(s) as indicated in the electronic bid solicitation on Central Auction House. No scanned paper copies of any bid bond will be accepted as part of the electronic bid submission.
12. This is an as needed basis contract. JEFFERSON PARISH makes no representations on warranties with regard to minimum guaranteed quantities unless otherwise stated in the bid specifications.
13. Freight charges should be included in total cost when quoting. If not quoted FOB DELIVERED, freight must be quoted as a separate item. Bid may be rejected if not quoted FOB DELIVERED or if freight charges are not indicated on bid form.
14. PUBLIC WORKS BIDS - Completed, Signed and Properly Notarized Affidavits Required; This applies to all solicitations for construction, alteration or demolition of public buildings or projects, in conformity with the provisions contained in LSA-RS 38:2212.9, LSA-RS 38:2212.10, LSA-RS 38:2224, and Sec 2-923.1 of the Jefferson Parish Code of Ordinances. For bidding purposes, all bidders must submit with bid submission COMPLETED, SIGNED and PROPERLY NOTARIZED Affidavits, including: Non-Conviction Affidavit, Non-Collusion Affidavit, Campaign Contribution Affidavit, Debt Disclosures Affidavit and E-Verify Affidavit. For the convenience of vendors, all affidavits have been combined into one form entitled PUBLIC WORKS BID AFFIDAVIT. This affidavit must be submitted in its original format, and without material alteration, in order to be compliant and for the bid to be considered responsive. A scanned copy of the completed, signed and properly notarized affidavit may be submitted with the bid, however, the successful bidder must submit the original affidavit in its original format and without material alteration upon contract execution. Failure to comply will result in the bid submission being rejected as non-responsive. The Parish reserves the right to award bid to the next lowest responsive and responsible bidder in this event.
15. NON PUBLIC WORK BIDS - Completed, Signed and Properly Notarized Affidavits Required in conformity with the provisions contained in LSA - RS 38:2224 and Sec 2-923.1 of the Jefferson Parish Code of Ordinances. For bidding purposes, all bidders must submit with bid submission COMPLETED, SIGNED and PROPERLY NOTARIZED Affidavits, including: Non-Collusion Affidavit, Debt Disclosures Affidavit and Campaign Contribution Affidavit. For the convenience of vendors, all affidavits have been combined into one form entitled NON PUBLIC WORKS BID AFFIDAVIT. This affidavit must be submitted in its original format, and without material alteration, in order to be compliant and for the bid to be considered responsive. A scanned copy of the completed, signed and properly notarized affidavit may be submitted with the bid, however, the successful bidder must submit the original affidavit in its original format and without material alteration upon contract execution. Failure to comply will result in the bid submission being rejected as non-responsive. The Parish reserves the right to award bid to the next lowest responsive and responsible bidder in this event.

DATE: 11/10/2021

BID NO.: 50-00136519

Page: 4

INSTRUCTIONS FOR BIDDERS AND GENERAL CONDITIONS

16. The ensuing contract for this bid solicitation may be eligible for FEMA reimbursement and/or Federal funding/reimbursement. As such, the referenced appendix will be applicable accordingly and shall be considered a part of the bid documents. All applicable certifications must be duly completed, signed and submitted with bid submission. Failure to submit applicable certifications with bid submission will result in bid rejection.

17. For this project, the Contractor shall not pay any state or local sales or use taxes on materials and equipment which are affixed and made part of the immovable property of the project or which is permanently incorporated in the project (hereinafter referred to as "applicable materials and equipment"). All purchases of applicable materials or equipment shall be made by the contractor on behalf of and as the agent of Jefferson Parish (Owner), a political subdivision of the State of Louisiana. No state and local sales and use taxes are owed on applicable materials and equipment under the provisions of Act 1029 of the 1991 Regular Session - Louisiana Revised Statute 47:301(8)(c). Owner will furnish to contractor a certificate form which certifies that Owner is not required to pay such state or local sales and use taxes, and contractor shall furnish a copy of such certificate to all vendors or suppliers of the applicable materials and equipment, and report to Owner the amount of taxes not incurred.

It shall be the duty of every parish officer, employee, department, agency, special district, board, and commission: and the duty of every contractor, subcontractor, and licensee of the parish, and the duty of every applicant for certification of eligibility for a parish contract or program, to cooperate with the Inspector General in any investigation, audit, inspection, performance review, or hearing pursuant to Jefferson Parish Code of Ordinances Section 2-155.10(19). By submitting a bid, vendor acknowledges this and will abide by all provisions of the referenced Jefferson Parish Code of Ordinances.

DATE: 11/10/2021

INVITATION TO BID
THIS IS NOT AN ORDER

Page: 5

BID NO.: 50-00136519

JEFFERSON PARISH

PURCHASING DEPARTMENT
P.O. BOX 9
GRETN, LA. 70054-0009
504-364-2678

VENDOR:

BUYER: MBUTTERY

As per LSA-RS 47:301 et seq., all governmental bodies are excluded from payment of sales taxes to any Louisiana taxing body. Quotations shall be based on F.O.B. Agency warehouse or jobsite, anywhere within the Parish as designated by the Purchasing Department.

JEFFERSON PARISH reserves the right to cancel all or any part of an order if not shipped promptly. No charges will be allowed for parking or cartage unless specified in quotation. The order must not be filled at a higher price than quoted. JEFFERSON PARISH reserves the right to cancel at any time and for any reason by issuing a THIRTY (30) day written notice to the contractor.

JEFFERSON PARISH is expecting all products to be new and all work to be done in workman-like manner, according to standard practices. Any deviations or alteration from the specifications must be indicated on the bid form for each item and upon request, product data for same must be submitted by the time specified by the Purchasing Department.

DELIVERY: FOB JEFFERSON PARISH

INDICATE DELIVERY DATE ON EQUIPMENT AND SUPPLIES

7-9 weeks

INDICATE STARTING TIME (IN DAYS) FOR CONSTRUCTION WORK

N/A

INDICATE COMPLETION TIME (IN DAYS) FOR CONSTRUCTION WORK

N/A

In the event that addenda are issued with this bid, bidders MUST acknowledge all addenda on the bid form. Bidder must acknowledge receipt of an addendum on the bid form by placing the addendum number as indicated. Failure to acknowledge any addendum on the bid form will result in bid rejection.

Acknowledge Receipt of Addenda: NUMBER: _____

NUMBER: _____

NUMBER: _____

NUMBER: _____

LOUISIANA CONTRACTOR'S LICENSE NO.: (if applicable) _____

*** ALL BIDDERS MUST COMPLETE SECTION BELOW ***	
FIRM NAME: Coastal Process, LLC	
SIGNATURE: Cayce Smith	TITLE: Admin/Inside Sales
(Must be signed here)	
PRINT OR TYPE NAME: Cayce Smith	
ADDRESS: 28750 James Chapel Rd. North	
CITY, STATE: Holden, LA	ZIP: 70744
TELEPHONE: 225-567-3120	FAX: 225-567-3805
EMAIL ADDRESS: info@coastalprocess.net	

TOTAL PRICE OF ALL BID ITEMS: \$ 9,405.00

DATE: 11/10/2021

Page: 6

INVITATION TO BID FROM JEFFERSON PARISH - continued

BID NO.: 50-00136519

SEALED BID

ITEM NUMBER	QUANTITY	U/M	DESCRIPTION OF ARTICLES	UNIT PRICE QUOTED	TOTALS
1	3.00	EA	<p>One Time Purchase of Check Valves for the Westbank Public Works Warehouse</p> <p>0010 - VALVE, CHECK, 6 IN. X 16 IN. FACE TO FACE, FLANGED, WEIGHT AND LEAVER/AIR CUSHIONED, BRONZE DISC FACE, ANSI B16.1, CLASS 125, ANSI/AWWA C508, MUELLER NO. A-2604-6-01 SK NUMBER 00-0622110</p> <p>DELIVER TO: PUBLIC WORKS WAREHOUSE 1500 RIVER PARK ROAD BRIDGE CITY, LA 70094</p>	\$3,135.00	\$9,405.00

Coastal Process, LLC

28750 James Chapel Road N
Holden, LA 70744



Quotation

Date	Quote #	REV
11/11/2021	2021-15718	0

Name / Address					Ship To		
Jefferson Parish Purchasing Department 200 Derbigny Street General Government Building, Suite 4400 Gretna, LA 70053					PUBLIC WORKS WAREHOUSE 1500 RIVER PARK ROAD BRIDGE CITY, LA 70094		
Terms		Rep		FOB		Quoted By	
Net 30		TB		Shipping Pt		Cayce Smith	
						Delivery ARO	
						7-9 weeks	
#	Qty	Item	BIN	Part Number	Description	Price	Total
01	3	Misc-Val-Matic		7806AC	Bid Number: 50-00136519 Bid Due: November 17, 2021 at 11:00 AM One Time Purchase of Check Valves for the Westbank Public Works Warehouse Mark Buttery MButtery@jeffparish.net 504-364-2810 6" Swing Check Valve - Air Cushion ANSI Class 150 - Ductile Iron Body - CWP: 250 PSI Coating: Fusion Bonded Epoxy Exception: lay length is 14" Freight Included	3,135.00	9,405.00T
<div> <div> Coastal Process, LLC Standard Terms and Conditions Shall Apply- Credit Terms confirmed at time of order. Progress payments may apply. Please send any purchase orders to: orders@coastalprocess.net </div> <div> Phone # 225-567-3120 Fax # 225-567-3805 E-mail info@coastalprocess.net Web Site www.coastalprocess.net </div> </div>						Subtotal \$9,405.00 Sales Tax (0.0%) \$0.00 Total \$9,405.00	
RETURNS: No returns or credits will be issued for non-returnable parts. Coastal Process, LLC applies a minimum 30% restocking fee to return stocked parts.							

Series 7800 SWING CHECK VALVE

Val Matic® Specification

1 Scope

- 1.1 This specification covers the design, manufacture, and testing of 2 in. (50 mm) through 48 in. (1200 mm) Swing Check Valves suitable for cold working pressures of 250 psig.
- 1.2 The Swing Check Valve shall be of the full waterway body type, with a domed access cover and vent port.
- 1.3 The check valve shall be capable of accepting air cushion, lever and weight or lever and spring

2 Standards, Approvals and Verification

- 2.1 The valves shall be designed, manufactured and tested in accordance with American Water Works Association Standard ANSI/AWWA C508 and in accordance with Manufacturers Standardization Society Standard Practice MSS SP-71 or MSS SP-136.
- 2.2 The valves used in potable water service shall be certified to NSF/ANSI 61, Drinking Water System Components - Health Effects, and certified to be Lead-Free in accordance with NSF/ANSI 372.
- 2.3 Manufacturer shall have a quality management system that is certified to ISO 9001 by an accredited, certifying body.

3 Connections

- 3.1 The Valves shall be provided with flanges drilled in accordance with ASME B16.1, Class 125 iron flanges or ASME B16.42, Class 150 for ductile iron flanges.

4 Design

- 4.1 The valve body shall be full flow equal to nominal pipe diameter area at all points through the valve and shall be equipped with a threaded adjustable open stop. The body seat shall be O-ring sealed and field replaceable without removing the valve from the line. The end flanges shall contain integrally case mounting pads.
- 4.2 The top access port shall be full size, allowing removal of the disc without removing the valve from the line. The access cover shall be domed in shape to provide flushing action over the disc for operating in lines containing high solids content.
- 4.3 The disc shall be of one-piece construction and connected to the shaft with a disc arm and two pivot pins to provide pivot action to allow self-adjusting seating at all pressures. 14" and larger discs shall be convex shape for lift, stabilization and strength.
- 4.4 When specified, the disc seat shall be resilient with integral O-ring type sealing surface for drop tight shut-off at high and low pressures and for easy replacement in the field without removing the valve from the line.
- 4.5 When specified, metal seated valves shall have aluminum bronze seats.
- 4.6 The shaft seals shall consist of V-type packing in a fixed gland with an adjustable follower designed to prevent over compression of the packing and to meet design parameter of the packing manufacturer. Removable, slotted shims shall be provided under the follower flanges to provide for adjustment and prevent over loading of the packing.
- 4.7 When specified, the valve shall be factory equipped with a lever and weight assembly. The lever shall be equipped with three holes for adjusting the bolted weight assembly. When the valve is closed, the lever and weight shall be located 30 degrees below horizontal.

Revised 2-17-15 (Rev 3)

SERIES 7800 SWING CHECK VALVE SPECIFICATION

DATE 10-4-11

VAL-MATIC®

VALVE AND MANUFACTURING CORP.

DRWG. NO.

VM-7800-S
Sheet 1 of 2

Series 7800 SWING CHECK VALVE Val Matic® Specification

- 4.8** When specified, the valve shall be factory equipped with a lever and air cushion assembly mounted between the weight assembly and the valve body. The air cushion assembly shall consist of a clevis mounted tie-rod type closed cylinder with speed control valves.
- 4.9** When specified, the valve shall be factory equipped with a lever and spring assembly. The spring shall be mounted to a bracket on the side of the valve body with a bolt assembly to adjust the spring tension.

5 Materials

- 5.1** The valve body, cover and disc shall be constructed of ASTM A536 Grade 65-45-12 ductile iron for sizes 2 in. (50 mm) through 24 in. (600 mm) and ASTM A126 class B, gray iron for sizes 30 in. (800 mm) through 48 in. (1200 mm), with optional body material ASTM A536 Grade 65-45-12 ductile iron.
- 5.2** The exterior and interior of the valve shall be coated with an NSF/ANSI 61 approved fusion bonded epoxy coating.
- 5.3** The removable body seat shall be constructed of ASTM A276, Type 304 stainless steel.
- 5.4** The removable resilient seat shall be precision molded Buna-N (NBR), ASTM D2000-BG. When specified, optional seat material includes EPDM.
- 5.5** The disc arm and external levers shall be ductile iron.

6 Options

- 6.1** A pre-wired limit switch shall be provided (when specified) to indicate open/closed position to a remote location. The mechanical type limit switch shall be activated by the external arm and rated for NEMA 4, 6, or 6P and shall have U.L. rated 5 amp, 125 or 250 VAC contacts.
- 6.2** When specified, the lever and weight assembly shall be enclosed within a removable safety guard constructed of perforated metal for visibility.

7 Manufacture

- 7.1** Manufacturer shall demonstrate a minimum of five (5) years' experience in the manufacture of swing check valves.
- 7.2** All valves shall be hydrostatically and seat tested per AWWA C508 to demonstrate zero leakage and structural integrity. When requested, the manufacturer shall provide test certificates, dimensional drawings, parts list drawings, and operation and maintenance manuals.
- 7.3** Swing Check Valves shall be Series 7800 (resilient seated) or 7800M (metal seated) and equipped with AC (air cushion), LW (lever and weight), or LS (lever and spring) as manufactured by Val-Matic® Valve & Mfg. Corporation, Elmhurst, IL USA or approved equal.

Revised 2-17-15 (Rev 3)

SERIES 7800 SWING CHECK VALVE SPECIFICATION

DATE 10-4-11

VAL-MATIC®

VALVE AND MANUFACTURING CORP.

DRWG. NO.

VM-7800-S
Sheet 2 of 2

SWING CHECK VALVE

2" - 12" SERIES NO. 7800

STANDARD MATERIALS OF CONSTRUCTION

<u>PART NO.</u>	<u>PART NAME</u>	<u>MATERIAL</u>
1	BODY	DUCTILE IRON ASTM A536, GRADE 65-45-12
2	COVER	DUCTILE IRON ASTM A536, GRADE 65-45-12
3	DISC	DUCTILE IRON ASTM A536, GRADE 65-45-12
4	ARM	DUCTILE IRON ASTM A536, GRADE 65-45-12
5	HINGE PIN	STAINLESS STEEL, ASTM A276 T304
6	HINGE KEY	STAINLESS STEEL T304
7	SEAT RETAINING SEGMENT	DUCTILE IRON
8	RUBBER SEAT	BUNA-N, ASTM D2000
9	FLAT WASHER	STAINLESS STEEL T304
10	HEX HD. CAP SCREW	STAINLESS STEEL T304
11	SEAT	STAINLESS STEEL T304
13	PIPE PLUG	STEEL
14	BUSHING	ALUMINUM BRONZE C95400
15	V-PACKING SHIM	NYLON
16	V-PACKING	BUNA-N
17	PACKING SHIM	STAINLESS STEEL T304
18-1	HINGE COVER-THRU	DUCTILE IRON ASTM A536, GRADE 65-45-12
18-2	HINGE COVER-BLIND	DUCTILE IRON ASTM A536, GRADE 65-45-12
19	FLAT WASHER	STAINLESS STEEL T304
20	HEX HD. CAP SCREW	STAINLESS STEEL T304
21	RETAINING RING	STAINLESS STEEL T304
22	O-RING	BUNA-N
23	O-RING	BUNA-N
24	DISC PIN	STAINLESS STEEL, ASTM A276 T304
25	COTTER PIN	STAINLESS STEEL T304
26	O-RING	BUNA-N 70 DUROMETER
27	FLAT WASHER	PLATED STEEL
28	HEX HD. BOLT	PLATED STEEL
29	HEX NUT	PLATED STEEL
30	STOP BOLT	STAINLESS STEEL T304 WITH BUNA-N
31	FLAT WASHER	STAINLESS STEEL T304
32	HEX NUT	STAINLESS STEEL T304

NOTE: ALL SPECIFICATIONS AS
LAST REVISED.

Revised 11-9-18

MATERIALS OF CONSTRUCTION

DATE 10/13/11

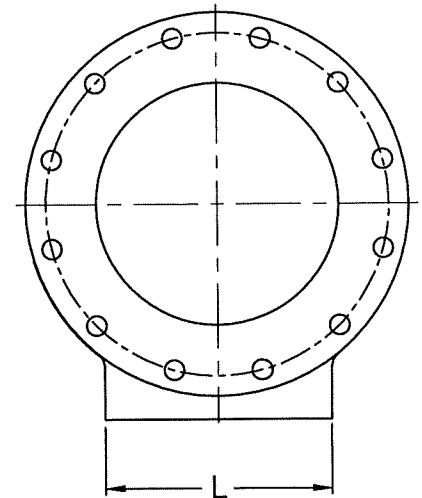
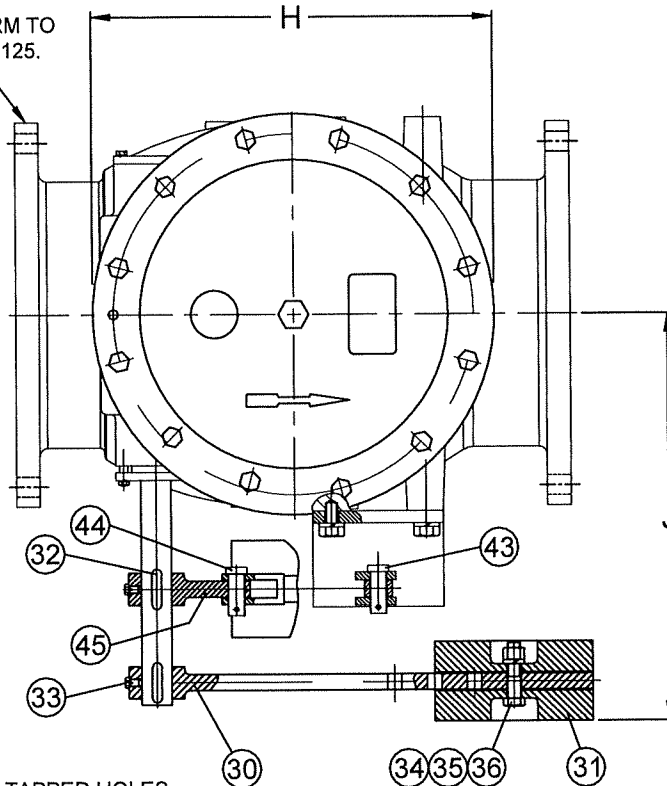


VALVE AND MANUFACTURING CORP.

DRWG. NO.

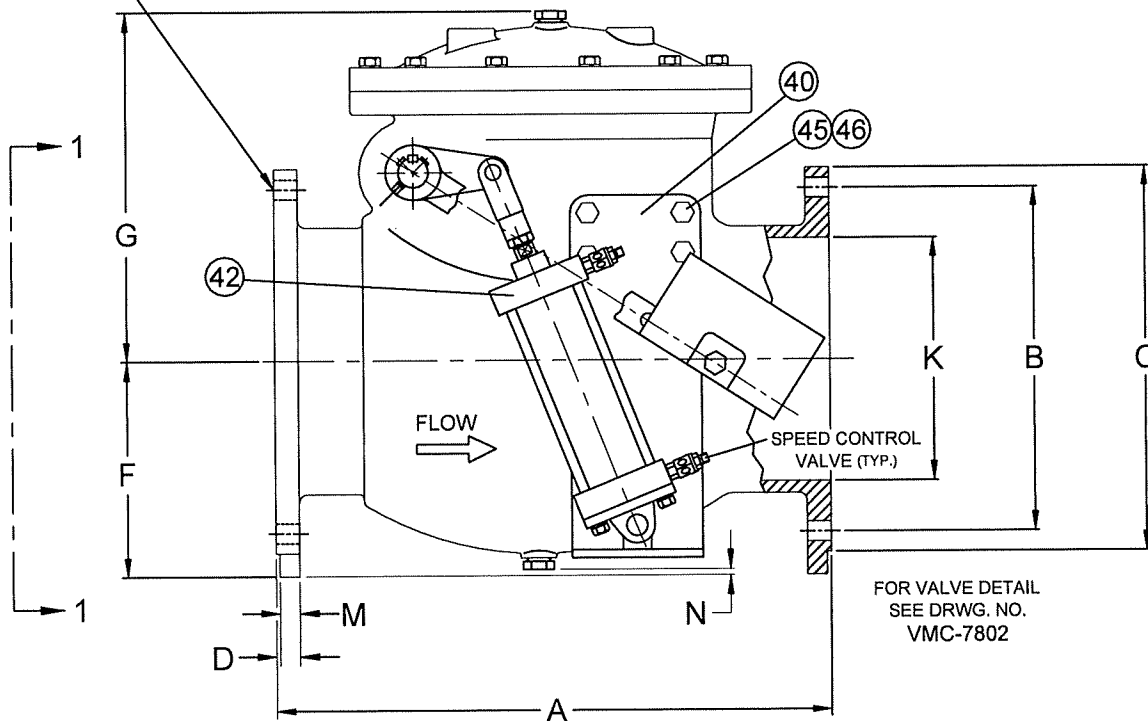
VM-7802-M

FLANGES CONFORM TO
ANSI B16.1 CLASS 125.



VIEW 1-1
(TYP. BOTH ENDS)

E NUMBER OF TAPPED HOLES
(TOP OF FLANGE NEAR HINGE)



DRAWING DEPICTS 12" VALVE SIZE TO SCALE.
SEE DRAWING NO. VM-7802AC-M FOR STANDARD MATERIALS OF CONSTRUCTION.

Revised 4-27-20 (Rev. 8)

SWING CHECK VALVE WITH AIR CUSHION AND WEIGHT

DATE 8-30-11

VAT-MATIC

VALVE AND MANUFACTURING CORP.

DRWG. NO.
VMC-7802AC
SHEET 1 OF 2

TABLE OF DIMENSIONS

DIMENSIONS, INCHES

VALVE SIZE	MODEL NO.	CWP (PSI)	A	B	C	D	E	F	G	H	J	K	L	M	N*	SHPG. WT.
3	7803AC	250	9.50	6.00	7.50	0.75	0	4.17	6.69	7.01	7.38	3.00	3.55	0.27	0.46	65
4	7804AC	250	11.50	7.50	9.00	0.75	0	4.92	7.60	7.87	8.63	4.00	3.94	0.62	0.43	105
6	7806AC	250	14.00	9.50	11.00	0.75	0	6.69	10.53	12.60	12.50	6.00	6.29	0.46	0.59	205
8	7808AC	250	19.50	11.75	13.50	0.88	0	8.46	12.80	15.75	15.75	8.00	7.88	0.43	0.97	351
10	7810AC	250	24.50	14.25	16.00	1.18	0	8.66	14.33	17.52	17.38	10.00	7.88	0.59	-0.13	519
12	7812AC	250	27.50	17.00	19.00	1.25	0	10.63	17.32	19.88	17.88	12.00	11.23	0.98	0.30	763
14	7814AC	250	31.00	18.75	21.00	1.38	0	12.50	19.96	23.88	23.13	14.00	14.00	0.75	-0.04	1061
16	7816AC	250	36.00	21.25	23.50	1.43	0	13.75	21.22	26.50	25.00	16.00	14.00	0.88	-0.29	1227
18	7818AC	250	40.00	22.75	25.00	1.56	0	15.00	23.22	27.88	26.38	18.00	14.38	1.00	-0.16	1571
20	7820AC	250	40.00	25.00	27.50	1.68	0	16.00	24.94	30.44	28.25	20.00	16.00	1.00	-0.66	1940
24	7824AC	250	48.00	29.50	32.00	1.88	0	18.50	30.34	36.63	32.75	24.00	14.00	1.00	0.90	3112
30	7730AC	150	60.00	36.00	38.75	2.12	0	22.00	38.47	43.81	40.75	30.00	18.00	1.06	-0.87	6148
30	7830AC	250	60.00	36.00	38.75	2.12	0	22.00	38.47	43.81	40.75	30.00	14.00	1.00	-0.87	6148
36	7736AC	150	63.00	42.75	46.00	2.38	0	25.50	43.22	51.41	45.06	36.00	20.00	1.13	-1.89	8555
36	7836AC	250	63.00	42.75	46.00	2.38	0	25.50	43.22	51.41	45.06	36.00	24.00	1.25	-1.89	8555
42	7742AC	150	70.00	49.50	53.00	2.63	0	29.25	49.80	59.88	50.00	42.00	30.00	1.44	-2.38	11460
42	7842AC	250	70.00	49.50	53.00	2.63	0	29.25	49.80	59.88	50.00	42.00	36.00	1.63	-2.38	11460
48	7748AC	150	76.00	56.00	59.50	2.75	8	32.75	56.38	68.38	55.13	48.00	42.00	1.81	-2.63	16860
48	7848AC	250	76.00	56.00	59.50	2.75	8	32.75	56.38	68.38	55.13	48.00	48.00	2.00	-2.63	16860

* DIMENSION "N" WITH NEGATIVE NUMBERS EXTEND PAST BOTTOM OF INTEGRAL MOUNTING PADS (FLANGE FEET).

Revised 4-27-20 (Rev. 8)

SWING CHECK VALVE WITH AIR CUSHION AND WEIGHT

DATE 8-30-11

VAL-MATIC

VALVE AND MANUFACTURING CORP.

DRWG. NO.
VMC-7802AC
SHEET 2 OF 2