



BID NUMBER- 50-00140726

**One-time Purchase of a Grapple Truck for the Jefferson Parish
Department of Parkways**

BID DUE: January 12, 2023 AT 2:00 PM

ATTENTION VENDORS!!!

Please review all pages and respond accordingly, complying with all provisions in the technical specifications and Jefferson Parish Instructions for Bidders and General Terms and Conditions. All bids must be received on the Purchasing Department's eProcurement site, www.jeffparishbids.net, by the bid due date and time. Late bids will not be accepted.

**Jefferson Parish Purchasing Department
200 Derbigny Street
General Government Building, Suite 4400
Gretna, LA 70053
Buyer Name: SHANNA FOLSE
Buyer Email: sfolse@jeffparish.net
Buyer Phone: 504-364-2680**

A handwritten signature in blue ink, located in the bottom right corner of the page.

ONE TIME PURCHASE OF A LOADER AND GRAPPLE
FOR THE PARKWAYS DEPARTMENT

BID #50-00140726

SPECIFICATIONS

**A Louisiana's State Dealer License Is Required In Accordance With La Rs 32:1254 Et Seq.
Vendor Must Provide A Louisiana Dealer's License Number With Your Bid**

NET LIFTING MOMENT 73,760 ft. lbs.

CAPACITY & REACH 7,780 lbs. @ 10'
5,100 lbs. @ 15'
3,860 lbs. @ 20'
3,280 lbs. @ full reach (23'6")

HORIZONTAL REACH 23' 6"

**MAIN & OUTER BOOM
LENGTH – HORIZONTAL** 18' 4"

EXTENSION LENGTH 5' 2"

CRANE RATING Minimum HC1/HD4/B4

LOADER WEIGHT 4,010 lbs.

HYDRAULIC SYSTEM Single circuit control valve
3,120 main system pressure
21 GPM
High pressure filter

**CRANE BASE &
STABILIZERS** Stabilizers shall be of an "H-Frame" design
with a spread of 12' 6" when fully extended.
Stabilizers in/out and up/down functions shall
be hydraulically controlled.
Stabilizers shall have a minimum spread of
10' 4".
Stabilizer in/out and up/down functions shall
all be independently controlled via lever
controls at both operator control stations.

**OPERATOR CONTROL
STATION AND OPERATOR
CONTROLS** Crane base to have stand up operator control
station platform on curb and street sides.



Control station platforms to have perforated steel grip.

Control station platforms to have pivoting safety bar on outside edge of platform for operator safety.

Each control station to have emergency stop button and toggle switch for truck rpm +/- throttle control.

Each control station to have bullseye style bubble levels.

Pilot operated dual joystick controls at both curb and street side operator stations.

LCD display hour counter and service timer located at curb side operator control station.

COLUMN & SLEWING SYSTEM

Minimum 17,700 ft lbs. net slewing torque.

425° rotation

Capable of 8 rotations per minute at full hydraulic flow.

Crane column to be solid cast.

Slewing derived via a solid double rack slewing system.

Slewing racks immersed in oil bath with self-aligning roller bearing.

End of stroke dampening for precision slewing pistons on ends of racks for easy service of piston.

MAIN & OUTER BOOM

Main boom lift cylinder shall have a sliding steel guard to protect the cylinder load from damage.

Main boom section to have raised sides to create a protective recess for the steel hydraulic lines and hoses on the top of the main boom.

All line and hose connections on the top of the main boom shall be staggered & elevated off the top of the main boom structure for ease of service.

Steel lines on the top of the main boom shall be KTL painted (see KTL paint requirements in Paint section below).

Loader shall have a linkage system between main and outer boom to provide a consistent rate of movement and load capacity throughout the arc of the loader's movement at a given horizontal reach. The load capacity at a given horizontal reach shall deviate more than 2.5% when evaluated at 0' vs. 10' elevation from ground level.

Outer boom cylinder shall be mounted above the main and outer boom to help protect cylinder from contact with truck body and body debris.

Outer boom shall articulate up an additional 25 degrees in relation to the main boom.

All bushings in the arm system shall be bronze and incorporate grease channels to maximize lubrication & maintenance.

EXTENSION SYSTEM

Extension cylinder, hoses and pipes shall be located inside the outer boom and extension sections. No external hoses, pipes or cylinders are acceptable. Extension system shall have adjustable wear pads and guide blocks.

SUSPENSION LINK & ROTATOR

Suspension link shall be cast steel and have open center for routing of rotator hoses. Hose routing outside of the suspension link is not acceptable.

Suspension link shall be of a dual pin design at the attachment points where the link attaches to the loader extension section.

Rotator shall be a 10-ton approved equal.

Rotator shall be capable of 360° continuous rotation.

Rotator shall have side & bottom ports.

Rotator shall have a bolt on steel guard plate covering the hose fitting connections and ports on the rotator.

GRAPPLE

42" or approved equal

Clamshell, butt-styled grapple

42" wide jaws

Bolt-on HARDOX steel cutting edges for jaws.

64" open width

6,744 ft. lbs. of closing force

(2) Cylinder open/close design

Cylinders protected by steel plates underneath cylinders and grapple head above cylinders.

Bolt-on grapple head for easy servicing of cylinders and hydraulic components.

4,000 lbs. snap in load hooks on each side of grapple head.

Cylinder hoses routed through bottom ports on rotator and through top opening on grapple head assembly.

Rotator side port hose routing not acceptable.

PAINT

Crane structural components and pipes shall be painted using "KTL" (or equal) process. KTL

is an immersion painting process featuring cataphoresis electrostatic coating. Crane components and pipes shall be blasted with wire shot and then treated in zinc phosphate solution. Primer shall be applied and baked. Top coat shall be powder coating with hardening by baking at 400 degrees.

BODY AND LOADER INSTALLATION SPECIFICATIONS

HYDRAULIC SYSTEM

Hotshift PTO with direct mount, single circuit hydraulic pump.
53 gallon steel hydraulic reservoir with in tank return filter and 2" shut off valve.
Manual dump body control valve mounted on street side frame rail with remote air joystick control mounted at street side crane operator control platform.
Dump body control valve to have internal relief valve.
Crane to be hydraulically powered via power beyond port on body control valve.

BODY

Body shall be BeauRoc MPMD series body or approved equal.
20' length
60" high sides
Side height shall taper down to a height of 48" at front of the body with taper beginning at mid point of body.
60" high tailgate
Minimum 3/16" DOMEX 100W floor
87" floor width
Floor sheet to side sheet transition shall be constructed with a knee brace at angles upward from the floor to the side at 57 degrees
Long sills shall be C-channel structural steel with a formed flared support flange. Support flange must have a minimum 1 3/4" return to support the floor with as wide as span as possible.
Long sills shall have a minimum bottom surface span of 2 1/4" wide.
Body shall be cross-memberless. Cross-member understructure not acceptable.
Minimum 3/16" DOMEX 100W front bulkhead.
Front bulkhead shall be of one-piece flat panel design.
Front bulkhead shall be capped at the top with 4"x3"x3/16" structural tube that runs the full

width of the front sheet.

Minimum 3/16" DOMEX 100W sides.

Side design shall include a formed single side sheet with formed two-bend pressed-in horizontal braces to increase rigidity (no exceptions). Weld on horizontal bracing and flat sided designs are not acceptable due to inferior rigidity and stability of the side plate. Lower rub rail shall be dirt shedding with an angle of 40° and shall have a 90° end face of 3" high (rub rails finishing in a point or rounded edge are not acceptable).

Top rail shall be a 4"x4"x3/16" structural steel HSS tubing.

Formed top rails are not acceptable.

Rear posts shall be full depth, one piece construction and fabricated out of a minimum 3/16" steel.

Minimum 3/16" DOMEX 100W rear tailgate door.

Tailgate shall be of manual side opening design ("Barn Door Style").

Tailgate wear surface shall be a single piece, fully formed, with two pressed-in horizontal V-braces to increase rigidity. Flat panel designs are unacceptable due to inferior rigidity and stability.

Tailgate outer frame shall consist of single, dirt shedding formed upper and lower brace. Outer side bracing shall be 3"x1"x1/8" structural tubing. Weld-on intermediate horizontal and/or vertical braces are not acceptable due to decrease resistance of tailgate plate to deformation. Side opening hardware shall consist of three side opening hinges with 1" diameter hinge pins with bushings and castle nut.

Hinge pins to have (2) grease zerks per pin.

Tailgate latch shall be equipped with an ergonomic handle and must have a spring-loaded return for safety.

All body seams to be 100% fully welded. No exceptions.

Body shall have a under body mounted double acting scissor style hoist.

Rear truck frame and hinge area to have minimum 3/16" steel cover plate from bottom of hinge assembly angle to bottom of truck frame channel.

Body shall have a single body prop.

Body shall be sandblasted and primed with a 2-part epoxy primer at a minimum thickness of 4 mils.

Primer salt spray resistance must be a minimum of 1500 hours (no exceptions). Bidder must supply primer manufacturer's literature showing the required minimum salt spray resistance.

Body to be painted with an industrial grade enamel gloss black paint.

LIGHTS AND ELECTRICAL

All body lighting to be LED (no exceptions).

Body to have 3/4" amber LED grommet mount marker lights on front, outside corners of body.

Body to have 3/4" red LED grommet mount marker lights on rear, outside corners of body.

(3) 3/4" red LED grommet mount marker lights shall be installed in steel cover plate from bottom of truck frame channel.

Body to have 6" oval red LED grommet backup lights and 6" installed rear body post, rearward facing.

Body to have 6" oval amber LED grommet mount strobe lights in rear body post, rearward facing.

(2) 4" slim line flange mounted amber/white LED strobe lights shall be mounted to front bumper of truck.

(2) 4" slim line flange mounted amber/white LED strobe lights shall be mounted to outside point of crane stabilizer cylinders.

All strobe lights to be controlled via single in-cab switch 6"x8"x6" gray polycarbonate weatherproof junction box shall be mounted on driver's side of truck frame.

Junction box shall have a minimum NEMA 4X/IP66 rating.

Junction box shall have DIN rail mounted central ground terminals for ground connections for loader and oil cooler.

Junction box shall have DIN rail mounted relay to control truck throttle signal from loader to chassis ECM input.

Junction box shall have a heavy duty 150 AMP solenoid to control power supply to DIN rail breakers only when PTO is engaged.

ACCESSORIES AND OTHER MISCELLANEOUS

Truck shall have an aluminum 18"x18"x36" frame mounted toolbox.

Truck shall have truck frame bolted, spring loaded mud flap brackets with DOT compliant mud flaps.

Truck shall have DOT compliant ICC bumper.

Top of truck frame area between truck cab and loader shall have a 8' wide, 24" long pass through operator platform with access steps on both street and curb sides.

Pass through platform shall be steel constructed with minimum of 1 1/2"x3"x11ga steel tube frame and serrated grated platform and step treads.

Platform shall have hand rails on both sides of steps.
Crane shall have minimum of 3/8" thick angle steel wear plates between crane and truck frame.
Truck shall have DOT compliant reflectors and conspicuity tape.
All steel fabrication shall be painted gloss black enamel.

**WARRANTY SERVICE REPAIRS MUST BE INITIATED
WITHIN TWO (2) HOURS OF NOTIFICATION**

WARRANTY: Included with brochures

**MANUALS: (2) PARTS, (2) SERVICE MANUALS, (2) WIRING DIAGRAMS IF
MANUFACTURER STILL PROVIDES. IF NO MANUALS, CD'S WILL BE ACCEDPTED**

**SAFETY: MUST MEET OR EXCEED ALL FEDERAL AND STATE SAFETY
STANDARD**



DATE: 12/28/2022
BID NO.: 50-00140726

INVITATION TO BID
THIS IS NOT AN ORDER

Page: 1

JEFFERSON PARISH

PURCHASING DEPARTMENT
P.O. BOX 9
GRETNA, LA. 70054-0009
504-364-2678

BUYER: SFOLSE@jeffparish.net

BIDS WILL BE RECEIVED ONLINE VIA WWW.JEFFPARISHBIDS.NET UNTIL 2:00 PM, 1/12/2023 AND PUBLICLY OPENED THEREAFTER IN THE WEST BANK PURCHASING DEPT, SUITE 4400, JEFFERSON PARISH GENERAL GOVERNMENT BUILDING, 200 DERBIGNY STREET, GRETNA, LA 70053. At no charge, bidders are to submit via Jefferson Parish's electronic procurement page by visiting www.jeffparishbids.net to register for this free site. Additional instructions are included in the text box highlighting electronic procurement.

LATE BIDS WILL NOT BE ACCEPTED

NOTE: ONLY BIDS WRITTEN IN INK OR TYPEWRITTEN, AND PROPERLY SIGNED BY A MEMBER OF THE FIRM OR AUTHORIZED REPRESENTATIVE, WILL BE ACCEPTED. PENCIL AND/OR PHOTOSTATIC FIGURES OR SIGNATURES SHALL RESULT IN BID REJECTION. HOWEVER, ELECTRONIC SIGNATURES AS DEFINED IN LSA - R.S. 9:2620(8) ARE ACCEPTABLE. SIGNATURE MUST BE A SECURED DIGITAL SIGNATURE.

INSTRUCTIONS FOR BIDDERS AND GENERAL CONDITIONS

THE FOLLOWING INSTRUCTIONS APPLY TO ALL BIDS

All bids submitted are subject to these instructions and general conditions and any special conditions and specifications contained herein, all of which are made part of this bid proposal reference. By submitting a bid, vendor agrees to comply with all provisions of Louisiana Law as well be in compliance with the Jefferson Parish Code of Ordinances, Louisiana Code of Ethics, applicable Jefferson Parish ethical standards and Jefferson Parish Resolution No. 113646 and/or Resolution No. 113647 as amended.

Jefferson Parish adheres to the Louisiana Code of Governmental Ethics, contained in Louisiana Revised Statutes Annotated, R.S. 42:1101, et seq. Vendor/Proposer by this submission, warrants that there are no "conflicts of interest" related to this procurement that would violate applicable Louisiana Law. Violation of the Louisiana Code of Governmental Ethics may result in rescission of contract, permit or licenses, and the imposition of fines and/or penalties, without contractual liability to the public in accordance with applicable law.

All vendors submitting bids should register as a Jefferson Parish vendor if not already yet registered. Registration forms may be downloaded from <http://purchasing.jeffparish.net> and by clicking on Vendor Information. Current W-9 forms with respective Tax Identification numbers and vendor applications may be submitted at any time; however, if your company is not registered and/or a current W-9 form is not on file, vendor registration is mandatory. Vendors may experience a delay in payment if your company is not a registered vendor with Jefferson Parish.

All quotations shall be based on F.O.B. Agency warehouse or job site, anywhere within the Parish as designated by the Purchasing Department. This provision does not apply to public works projects

JEFFERSON PARISH requires all products to be new (current) and all work must be performed according to standard practices for the project. Unless otherwise specified, no aftermarket parts will be accepted. Unless otherwise specified, all workmanship and materials must have at least one (1) year guaranty, in writing, from the date of delivery and/or acceptance of the project. Any deviations or alterations from the specifications must be indicated and/or supporting documentation supplied with bid submission.

Bidders should submit all questions in writing via email to the buyer's email address as indicated above, no later than Five (5) working days prior to the bid opening. Bid numbers should be mentioned in all requests. If submitting online, vendors may send questions via the E-Procurement site no later than Five (5) working days prior to the bid opening.

If this bid requires a pre-bid conference (see Additional Requirements section), bidders are advised that such conference will be held to allow bidders the opportunity to identify any discrepancies in the bid specifications and seek further clarification regarding instructions. The Purchasing Department will issue a written response to bidders' questions in the form of an Addendum. Please note that all official communication will be expressed in the form of an addendum.



All formal Addenda require written acknowledgement on the bid form by the bidder. Failure to acknowledge an Addendum on the bid form shall cause the bid to be rejected. JEFFERSON PARISH reserves the right to award bid to next lowest responsive and responsible bidder in this event.

JEFFERSON PARISH will accept one price for each item unless otherwise indicated. Two or more prices for one item will result in bid rejection. Bidders are required to complete, sign and return the bid form and/or complete and return the associated line item pricing forms as indicated. Vendors must not alter the bid forms. Doing so will cause the bid to be rejected.

A corporate resolution or written evidence of the individual signing the bid having such authority must be submitted with the bid. Failure to comply will cause bid to be rejected. For corporate entities, such written evidence may be a printout of the Louisiana Secretary of State's website listing the signatory as an officer. Such printout shall be included with the bid submission. Bids submitted by Owners or Sole Proprietorships must include certification that he or she owns the entity for which the bid is signed. This documentation must be submitted with the bid. Failure to do so will result in bid rejection.

NOTE: A sample corporate resolution can be downloaded from our website <http://purchasing.jeffparish.net> or you may provide your own document. A sample certification of sole proprietorship can also be downloaded from our website <http://purchasing.jeffparish.net> or you may provide your own document.

INSTRUCTIONS FOR BIDDERS AND GENERAL CONDITIONS

A. AWARD OF CONTRACT: JEFFERSON PARISH reserves the right to award contracts or place orders on a lump sum or individual item basis, or such combination, as shall in its judgment be in the best interest of JEFFERSON PARISH. Every contract or order shall be awarded to the LOWEST RESPONSIVE AND RESPONSIBLE BIDDER, taking into consideration the CONFORMITY WITH THE SPECIFICATIONS and the DELIVERY AND/OR COMPLETION DATE. SPLIT AWARDS MADE TO SEVERAL VENDORS WILL ONLY BE GRANTED TO THOSE DEEMED RESPONSIVE AND RESPONSIBLE.

All bid prices shall remain valid for 45 days. Jefferson Parish and the lowest responsive and responsible bidder(s) by mutual written consent may mutually agree to extend the deadline for award by one (1) or more extensions of thirty (30) calendar days.

PROTESTS: Only those vendors that submit bids in response to this solicitation may protest any element of the procurement, in writing to the Director of the Purchasing Department. Written protest must be received within 48 hours of the release of the bid tabulation by the Purchasing Department. After consultation, the Parish Attorney's Office will then respond to protests in writing. (For more information, please see Chapter 2, Article VII, Division 2, Sec. 2-914.1 of the Jefferson Parish Code of Ordinances.)

PREFERENCE: Unless federal funding is directly spent by Jefferson Parish for this purchase, preference is hereby given to materials, supplies, and provisions produced, manufactured or grown in Louisiana, quality being equal to articles offered by competitors outside the state. "LSA – R.S. 38:2251-2261"

B. USE OF BRAND NAMES AND STOCK NUMBERS: Where brand names and stock numbers are specified, it is for the purpose of establishing certain minimum standards of quality. Bids may be submitted for products of equal quality, provided brand names and stock numbers are specified. Complete product data may be required prior to award.

C. CANCELLATION OF CONTRACT: JEFFERSON PARISH reserves the right to cancel all or any part if not shipped promptly. No charges will be allowed for parking or cartage unless specified in quotation. The order must not be filled at a higher price than quoted. JEFFERSON PARISH reserves the right to cancel any contract at anytime and for any reason by issuing a THIRTY (30) day written notice to the contractor.

For good cause and as consideration for executing a contract with Jefferson Parish, vendor conveys, sells, assigns and transfers to Jefferson Parish or its assigns all rights, title and interest in and to all causes of action it may now or hereafter acquire under the antitrust laws of the United States and the State of Louisiana, relating to the particular good or services purchased or acquired by Jefferson Parish.

D. PRICES: Jefferson Parish is exempt from paying sales tax under LSA-R.S. 47:301 (8)(c). All prices for purchases by Jefferson Parish of supplies and materials shall be quoted in the unit of measure specified and unless otherwise specified, shall be exclusive of state and local taxes. The price quoted for work shall be stated in figures. In the event there is a difference in unit prices and totals, the unit price shall prevail.

Quantities listed are for bidding purposes only. Actual requirements may be more or less than quantities listed.

Bidders are not to exclude from participation in, deny the benefits of, or subject to discrimination under any program or activity, any person in the United States on the grounds of race, color, national origin, or sex; nor discriminate on the basis of age under the Age Discrimination Act of 1975, or with respect to an otherwise qualified handicapped individual as provided in Section 504 of the Rehabilitation Act of 1973, or on the basis of religion, except that any exemption from such prohibition against discrimination on the basis of religion as provided in the Civil Rights Act of 1964, or Title VI and VII of the Act of April 11, 1968, shall also apply. This assurance includes compliance with the administrative requirements of the Revenue Sharing final handicapped discrimination provisions contained in Section 51.55 (c), (d), (e), and (k)(5) of the Regulations. New construction or renovation projects must comply with Section 504 of the 1973 Rehabilitation Act, as amended, in accordance with the American National Standard Institute's specifications (ANSI A17.1-1961).

DATE: 12/28/2022

BID NO.: 50-00140726

Page: 3

INSTRUCTIONS FOR BIDDERS AND GENERAL CONDITIONS

Jefferson Parish and its partners as the recipients of federal funds are fully committed to awarding a contract(s) to firm(s) that will provide high quality services and that are dedicated to diversity and to containing costs. Thus, Jefferson Parish strongly encourages the involvement of minority and/or woman-owned business enterprises (DBE's, including MBE's, WBE's and SBE's) to stimulate participation in procurement and assistance programs.

The purpose and intention of this invitation to bid is to afford all suppliers an equal opportunity to bid on all construction, maintenance, repair, operating supplies and/or equipment listed in this bid proposal. JEFFERSON PARISH WILL ACCEPT ONE BID ONLY FROM EACH VENDOR. Items bid must meet specifications.

Advertised bids will be tabulated and a copy of the tabulation will be forwarded to each responding bidder.

IN ACCORDANCE WITH STATE REGULATIONS JEFFERSON PARISH OFFERS ELECTRONIC PROCUREMENT TO ALL VENDORS

This electronic procurement system allows vendors the convenience of reviewing and submitting bids online. This is a secure site and authorized personnel have limited read access only. Bidders are to submit electronically using this free service; while the website accepts various file types, one single PDF file containing all appropriate and required bid documents is preferred. Bidders submitting uploaded images of bid responses are solely responsible for clarity. If uploaded images/documents are not legible, then bidder's submission will be rejected. Please note all requirements contained in this bid package for electronic bid submission.

Please visit our E-Procurement Page at www.jeffparishbids.net to register and view Jefferson Parish solicitations. For more information, please visit the Purchasing Department page at <http://purchasing.jeffparish.net>.

The general specifications for construction projects and the purchase of materials, services and/or supplies are those adopted by the JEFFERSON PARISH Council by Resolution No. 113646 or 113647 as amended. The general conditions adopted by this resolution shall be considered as much a part of this document as if they were written wholly herein. A copy may be obtained from the Office of the Parish Clerk, Suite 6700, Jefferson Parish General Government Building, 200 Derbigny Street, Gretna, LA 70053. You may also obtain a copy by visiting the Purchasing Department webpage at <http://purchasing.jeffparish.net> and clicking on Online Forms.

ADDITIONAL REQUIREMENTS FOR THIS BID

PLEASE MATCH THE NUMBERS PRINTED IN THIS BOX WITH THE CORRESPONDING INSTRUCTIONS BELOW.

13, 15, DEALERS LICENSE

1. All bidders must attend the MANDATORY pre-bid conference and will be required to sign in and out as evidence of attendance. In accordance with LSA R.S. 38:2212(I), all prospective bidders shall be present at the beginning of the MANDATORY pre-bid conference and shall remain in attendance for the duration of the conference. Any prospective bidder who fails to attend the conference or remain for the duration shall be prohibited from submitting a bid for the project.
2. Attendance to this pre-bid conference is optional. However, failure to attend the pre-bid conference shall not relieve the bidder of responsibility for information discussed at the conference. Furthermore, failure to attend the pre-bid conference and inspection does not relieve the successful bidder from the necessity of furnishing materials or performing any work that may be required to complete the work in accordance with the specification with no additional cost to the owner.
3. Contractor must hold current applicable JEFFERSON PARISH licenses with the Department of Inspection and Code Enforcement. Contractor shall obtain any and all permits required by the JEFFERSON PARISH Department of Inspection and Code Enforcement. The contractor shall be responsible for the payment of these permits. All permits must be obtained prior to the start of the project. Contractor must also hold any and all applicable Federal and State licenses. Contractor shall be responsible for the payment of these permits and shall obtain them prior to the start of the project.

INSTRUCTIONS FOR BIDDERS AND GENERAL CONDITIONS

4. A LA State Contractor's License will be required in accordance with LSA R.S. 37-2150 et. seq. and such license number will be shown on the outside of the bid electronic envelope. Failure to comply will cause the bid to be rejected. When submitting the bid electronically, the license number must be entered in the appropriate field in the electronic procurement system. Failure to comply will cause the bid to be rejected.
5. It is the bidder's responsibility to visit the job site and evaluate the job before submitting a bid.
6. Job site must be clean and free of all litter and debris daily and upon completion of the contract. Passageways must be kept clean and free of material, equipment, and debris at all times. Flammable material must be removed from the job site daily because storage will not be permitted on the premises. Precaution must be exercised at all times to safeguard the welfare of JEFFERSON PARISH and the general public.
7. **PUBLIC WORKS BIDS:** All awards for public works in excess of \$5,000.00 will be reduced to a formal contract which shall be recorded at the contractor's expense with the Clerk of Court and Ex-Officio Recorder of Mortgages for the Parish of Jefferson. A price list of recordation costs may be obtained from the Clerk of Court and Ex-Officio Recorder of Mortgages for the Parish of Jefferson. All awards in excess of \$25,000.00 will require both a performance and a payment bond. Unless otherwise stated in the bid specifications, the performance bond requirements shall be 100% of the contract price. Unless otherwise state in the bid specifications, the payment bond requirements shall be 100% of the contract price. Both bonds shall be supplied at the signing of the contract.
8. **NON-PUBLIC WORKS BIDS:** A performance bond will be required for this bid. The amount of the bond will be 100% of the contract price unless otherwise indicated in the specifications. The performance bond shall be supplied at the signing of the contract.
9. **NON-PUBLIC WORKS BIDS:** A payment bond will be required for this bid. The amount of the bond will be 100% of the contract price unless otherwise indicated in the specifications. The payment bond shall be supplied at the signing of the contract.
10. All bidders must comply with the requirements stated in the attached "Standard Insurance Requirements" sheet attached to this bid solicitation. Failure to comply with this instruction will result in bid rejection.
11. A bid bond will be required with bid submission in the amount of 5% of the total bid, unless otherwise stated in the bid specifications. All sureties must be in original format (no copies) When submitting a bid online, vendors must submit an electronic bid bond through the respective online clearinghouse bond management system(s) as indicated in the electronic bid solicitation on Central Auction House. No scanned paper copies of any bid bond will be accepted as part of the electronic bid submission.
12. This is a requirements contract to be provided on an as needed basis. JEFFERSON PARISH makes no representations on warranties with regard to minimum guaranteed quantities unless otherwise stated in the bid specifications.
13. Freight charges should be included in total cost when quoting. If not quoted FOB DELIVERED, freight must be quoted as a separate item. Bid may be rejected if not quoted FOB DELIVERED or if freight charges are not indicated on bid form.
14. **PUBLIC WORKS BIDS - Completed, Signed and Properly Notarized Affidavits Required;** This applies to all solicitations for construction, alteration or demolition of public buildings or projects, in conformity with the provisions contained in LSA-RS 38:2212.9, LSA-RS 38:2212.10, LSA-RS 38:2224, and Sec 2-923.1 of the Jefferson Parish Code of Ordinances. For bidding purposes, all bidders must submit with bid submission COMPLETED, SIGNED and PROPERLY NOTARIZED Affidavits, including: Non-Conviction Affidavit, Non-Collusion Affidavit, Campaign Contribution Affidavit, Debt Disclosures Affidavit and E-Verify Affidavit. For the convenience of vendors, all affidavits have been combined into one form entitled PUBLIC WORKS BID AFFIDAVIT. This affidavit must be submitted in its original format, and without material alteration, in order to be compliant and for the bid to be considered responsive. A scanned copy of the completed, signed and properly notarized affidavit may be submitted with the bid, however, the successful bidder must submit the original affidavit in its original format and without material alteration upon contract execution. Failure to comply will result in the bid submission being rejected as non-responsive. The Parish reserves the right to award bid to the next lowest responsive and responsible bidder in this event.

INSTRUCTIONS FOR BIDDERS AND GENERAL CONDITIONS

15. NON PUBLIC WORK BIDS - Completed, Signed and Properly Notarized Affidavits Required in conformity with the provisions contained in LSA – RS 38:2224 and Sec 2-923.1 of the Jefferson Parish Code of Ordinances. For bidding purposes, all bidders must submit with bid submission COMPLETED, SIGNED and PROPERLY NOTARIZED Affidavits, including: Non-Collusion Affidavit, Debt Disclosures Affidavit and Campaign Contribution Affidavit. For the convenience of vendors, all affidavits have been combined into one form entitled NON PUBLIC WORKS BID AFFIDAVIT. This affidavit must be submitted in its original format, and without material alteration, in order to be compliant and for the bid to be considered responsive. A scanned copy of the completed, signed and properly notarized affidavit may be submitted with the bid, however, the successful bidder must submit the original affidavit in its original format and without material alteration upon contract execution. Failure to comply will result in the bid submission being rejected as non-responsive. The Parish reserves the right to award bid to the next lowest responsive and responsible bidder in this event.

16. The ensuing contract for this bid solicitation may be eligible for FEMA reimbursement and/or Federal funding/reimbursement. As such, the referenced appendix will be applicable accordingly and shall be considered a part of the bid documents. All applicable certifications must be duly completed, signed and submitted with bid submission. Failure to submit applicable certifications with bid submission will result in bid rejection.

17. For this project, the Contractor shall not pay any state or local sales or use taxes on materials and equipment which are affixed and made part of the immovable property of the project or which is permanently incorporated in the project (hereinafter referred to as "applicable materials and equipment."). All purchases of applicable materials or equipment shall be made by the contractor on behalf of and as the agent of Jefferson Parish (Owner), a political subdivision of the State of Louisiana. No state and local sales and use taxes are owed on applicable materials and equipment under the provisions of Act 1029 of the 1991 Regular Session - Louisiana Revised Statute 47:301(8)(c). Owner will furnish to contractor a certificate form which certifies that Owner is not required to pay such state or local sales and use taxes, and contractor shall furnish a copy of such certificate to all vendors or suppliers of the applicable materials and equipment, and report to Owner the amount of taxes not incurred.

It shall be the duty of every parish officer, employee, department, agency, special district, board, and commission: and the duty of every contractor, subcontractor, and licensee of the parish, and the duty of every applicant for certification of eligibility for a parish contract or program, to cooperate with the Inspector General in any investigation, audit, inspection, performance review, or hearing pursuant to JPCO 2-155.10(19). By signing this document, every corporation, partnership, or person contracting with PARISH, whether by cooperative endeavor, intergovernmental agreement, bid, proposal, application or solicitation for a parish contract, and every application for certification of eligibility for a parish contract or program, attests that it understands and will abide by all provisions of JPCO 2-155.10.



DATE: 12/28/2022

Page: 6

BID NO.: 50-00140726

BID FORM
Non Public Works

All Public Work Projects are required to use the Louisiana Uniform Public Work Bid Form

All prices must be held firm unless an escalation provision is requested in this bid. Jefferson Parish will allow one escalation during the term of the contract, which may not exceed the U.S. Bureau of Labor Statistics National Index for all Urban Consumers, unadjusted 12 month figure. The most recently published figure issued at the time an adjustment is requested will be used. A request must be made in writing by the vendor, and the escalation will only be applied to purchases made after the request is made.

Are you requesting an escalation provision?

YES ☒ NO ☐

MAXIMUM ESCALATION PERCENTAGE REQUESTED 15 %

INITIAL BID PRICES WILL REMAIN FIRM THROUGH THE DATE OF

Dec 31, 2023 (Delivery)

For the purposes of comparison of bids when an escalation provision is requested, Jefferson Parish will apply the maximum escalation percentage quoted by the bidder to the period to which it is applied in the bid. The initial price and the escalation will be used to calculate the total bid price. It will be assumed, for comparison of prices only, that an equal amount of material or labor is purchased each month throughout the entire contract.

DELIVERY: FOB JEFFERSON PARISH

INDICATE DELIVERY DATE ON EQUIPMENT AND SUPPLIES

Dealer
LOUISIANA CONTRACTOR'S LICENSE NO.: (if applicable)

475 days
N-2022-00115

THIS SECTION MUST BE COMPLETED BY BIDDER:

FIRM NAME: Empire Truck Sales, LLC.

ADDRESS: 210 Frontage Rd.

CITY, STATE: Slidell, LA. ZIP: 70458

TELEPHONE: 985 641-4000 FAX: 985 641-9808

EMAIL ADDRESS: brett.carrubba@empiretruck.com

In the event that addenda are issued with this bid, bidders MUST acknowledge all addenda on the bid form. Bidder must acknowledge receipt of an addendum on the bid form by placing the addendum number as indicated. Failure to acknowledge any addendum on the bid form will result in bid rejection.

Acknowledge Receipt of Addenda: NUMBER: 1 (truck spec)

NUMBER: 2 (truck spec)

NUMBER: _____

NUMBER: _____

TOTAL PRICE OF ALL BID ITEMS: \$ 24,577.39

AUTHORIZED
SIGNATURE: _____

TITLE: Sales Representative

Brett A. Carrubba

Printed Name

SIGNING INDICATES YOU HAVE READ AND COMPLY WITH THE INSTRUCTIONS AND CONDITIONS.

NOTE: All bids should be returned with the BID NUMBER and BID OPENING DATE indicated on the outside of the envelope submitted to the Purchasing Department.

Page 7

SEALED BID

BID NO.: 50-00140726

[illegible]

Non-Public Works Bid Affidavit Instructions

- Affidavit is supplied as a courtesy to Affiants, but it is the responsibility of the affiant to insure the affidavit they submit to Jefferson Parish complies, in both form and content, with federal, state and parish laws.
- Affidavit must be signed by an authorized representative of the entity or the affidavit will not be accepted.
- Affidavit must be notarized or the affidavit will not be accepted.
- Notary must sign name, print name, and include bar/notary number, or the affidavit will not be accepted.
- Affiant **MUST** select either A or B when required or the affidavit will not be accepted.
- Affiants who select choice A must include an attachment or the affidavit will not be accepted.
- If both choice A and B are selected, the affidavit will not be accepted.
- Affidavit marked N/A will not be accepted.
- It is the responsibility of the Affiant to submit a new affidavit if any additional campaign contributions are made after the affidavit is executed but prior to the time the council acts on the matter.

Instruction sheet may be omitted when submitting the affidavit



JEFFERSON PARISH

DEPARTMENT OF PURCHASING

CYNTHIA LEE SHENG
PARISH PRESIDENT

RENNY SIMNO
DIRECTOR

December 29, 2022

ADDENDUM # 1

Bid Number: 50-00140726

Receipt Date: January 12, 2023
Postponed to Date: N/A

Description of Bid: One-time Purchase of a Grapple Truck for the Jefferson Parish Department of Parkways

Q&A:

1) QUESTION: Do you have any actual truck specs you would like? Tandem, single axle? Engine HP preference?

ANSWER: Single Axle with a 300 HP Engine

*** THE DEADLINE FOR QUESTIONS IS FRIDAY, JANUARY 6, 2023 BY 12:00 P.M. ***

REMEMBER TO ACKNOWLEDGE THIS ADDENDUM ON YOUR BID SUBMISSION.

Sincerely,

Shanna Folse, Buyer II
Jefferson Parish Purchasing Department

Bidders must acknowledge all addenda on the bid form. Bidder acknowledges receipt of this addendum on the bid form by indicating the addendum number listed above. Failure to list each addenda number on the bid form will result in bid rejection.

This addendum is a part of the contract documents and modifies the original bidding documents and specifications. The contents of this addendum shall be included in the contract documents. Changes made by this addendum shall take precedence over the documents of earlier date.

JOSEPH S. YENNI BUILDING - 1221 ELMWOOD PARK BLVD - SUITE 404 - JEFFERSON, LA 70123 - PO BOX 10242 JEFFERSON, LA 70181-0242
OFFICE 504.364-2678

GENERAL GOVERNMENT BUILDING - 200 DERBIGNY ST - SUITE 4400 - GRETN, LA 70053 - PO BOX 9 - GRETN - LA 70054
OFFICE 504.364.2678

EMAIL: PURCHASING@JEFFPARISH.NET

WEBSITE: WWW.JEFFPARISH.NET





JEFFERSON PARISH

DEPARTMENT OF PURCHASING

CYNTHIA LEE SHENG
PARISH PRESIDENT

RENNY SIMNO
DIRECTOR

January 9, 2023

ADDENDUM # 2

Bid Number: 50-00140726

Receipt Date: January 12, 2023
Postponed to Date:

Description of Bid: 5000140726-One-time Purchase of a Grapple Truck for the Jefferson Parish Department of
Parkways

Q&A:

- QUESTION: I noticed Jefferson Parish's Grapple Truck solicitation on the Central Bidding website. The solicitation includes vehicle specifications and an addendum that addresses additional specifications, but I was hoping that you could provide me with more information on the cab and chassis that you're looking for – transmission, engine, whether you are looking for a conventional cab or a cab over engine.

ANSWER: Information attached

*** PLEASE SEE REVISED SPEC PAGE ATTACHED ****

***REMEMBER TO ACKNOWLEDGE THIS ADDENDUM ON YOUR BID SUBMISSION. ***

Sincerely,

Shanna Folse, Buyer II
Jefferson Parish Purchasing Department

Bidders must acknowledge all addenda on the bid form. Bidder acknowledges receipt of this addendum on the bid form by indicating the addendum number listed above. Failure to list each addenda number on the bid form will result in bid rejection.

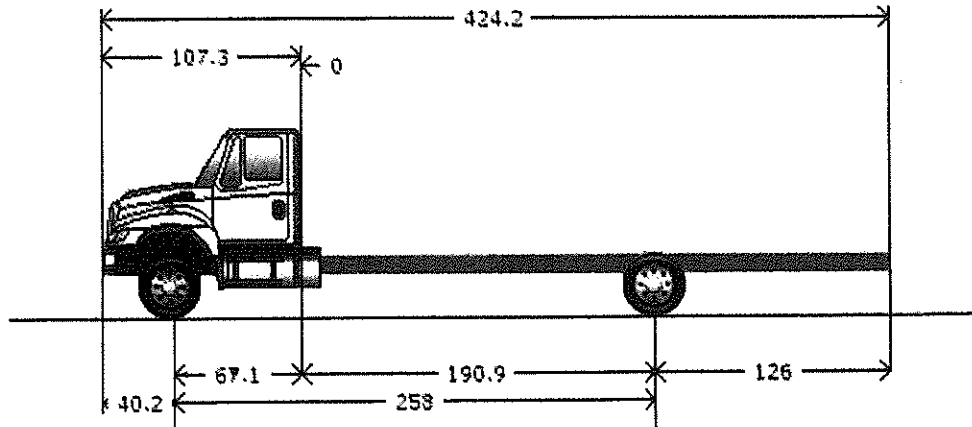
This addendum is a part of the contract documents and modifies the original bidding documents and specifications. The contents of this addendum shall be included in the contract documents. Changes made by this addendum shall take precedence over the documents of earlier date.

JOSEPH S. YENNI BUILDING - 1221 ELMWOOD PARK BLVD - SUITE 404 - JEFFERSON, LA 70123 - PO BOX 10242 JEFFERSON, LA 70181-0242
OFFICE 504.364-2678

GENERAL GOVERNMENT BUILDING - 200 DERBIGNY ST - SUITE 4400 - GRETN, LA 70053 - PO BOX 9 - GRETN - LA 70054
OFFICE 504.364.2678

EMAIL: PURCHASING@JEFFPARISH.NET

WEBSITE: WWW.JEFFPARISH.NET



Model Profile
2023 HV607 SBA (HV607)

AXLE CONFIG:	4X2
APPLICATION:	Light Aggregate
MISSION:	Requested GVWR: 33000. Calc. GVWR: 33000. Calc. GCWR: 50000
DIMENSION:	Wheelbase: 258.00, CA: 190.90, Axle to Frame: 126.00
ENGINE, DIESEL:	{Cummins B6.7 300} EPA 2021, 300HP @ 2600 RPM, 660 lb-ft Torque @ 1600 RPM, 2600 RPM Governed Speed, 300 Peak HP (Max)
TRANSMISSION, AUTOMATIC:	{Allison 3500 RDS} 5th Generation Controls, Wide Ratio, 6-Speed with Double Overdrive, with PTO Provision, Less Retarder, Includes Oil Level Sensor, with 80,000-lb GVW and GCW Max, On/Off Highway
CLUTCH:	Omit Item (Clutch & Control)
AXLE, FRONT NON-DRIVING:	{Meritor MFS-12-143A} Wide Track, I-Beam Type, 12,000-lb Capacity
AXLE, REAR, SINGLE:	{Dana Spicer 21060D} Single Reduction, 21,000-lb Capacity, Driver Control Locking Differential, 200 Wheel Ends Gear Ratio: 5.57
CAB:	Conventional, Day Cab
TIRE, FRONT:	(2) 11R22.5 Load Range G HSR2 (CONTINENTAL), 498 rev/mile, 75 MPH, All-Position
TIRE, REAR:	(4) 11R22.5 Load Range G HDL2 DL ECO PLUS (CONTINENTAL), 491 rev/mile, 75 MPH, Drive
SUSPENSION, REAR, SINGLE:	23,500-lb Capacity, Vari-Rate Springs, with 4500-lb Capacity Auxiliary Rubber Springs
PAINT:	Cab schematic 100WL Location 1: 9219, Winter White (Std) Chassis schematic N/A

INTERNATIONAL[®]**Vehicle Specifications
2023 HV607 SBA (HV607)**

February 14, 2022

<u>Code</u>	<u>Description</u>	<u>F/R Wt</u> (lbs)	<u>Tot Wt</u> (lbs)
HV60700	Base Chassis, Model HV607 SBA with 258.00 Wheelbase, 190.90 CA, and 126.00 Axle to Frame.	6136/3644	9780

AXLE CONFIGURATION

1ANA	AXLE CONFIGURATION {Navistar} 4x2	-160/-153	-313
	<u>Notes</u> : Pricing may change if axle configuration is changed.		

ENGINE

12ERL	ENGINE, DIESEL {Cummins B6.7 300} EPA 2021, 300HP @ 2600 RPM, 660 lb-ft Torque @ 1600 RPM, 2600 RPM Governed Speed, 300 Peak HP (Max)	0/0	0
12XCS	CARB EMISSION WARR COMPLIANCE Federal, Does Not Comply with CARB Emission Warranty	0/0	0
12WZE	CARB IDLE COMPLIANCE Federal, Does Not Comply with California Clean Air Idle Regulations	0/0	0
12VJB	EMISSION, CALENDAR YEAR {Cummins B6.7} EPA, OBD and GHG Certified for Calendar Year 2022	0/0	0
12UYE	RADIATOR Aluminum, 2-Row, Cross Flow, Over Under System, 717 SqIn Louvered, with 313 SqIn Charge Air Cooler, Includes In-Tank Oil Cooler	-80/-1	-81
	<u>Includes</u> : DEAERATION SYSTEM with Surge Tank : HOSE CLAMPS, RADIATOR HOSES Gates Shrink Band Type; Thermoplastic Coolant Hose Clamps : RADIATOR HOSES Premium, Rubber		
12THT	FAN DRIVE {Horton Drivemaster} Two-Speed Type, Direct Drive, with Residual Torque Device for Disengaged Fan Speed	0/0	0
	<u>Includes</u> : FAN Nylon		
12VBR	AIR CLEANER with Service Protection Element	10/0	10
12703	ANTI-FREEZE Red, Extended Life Coolant; To -40 Degrees F/ -40 Degrees C, Freeze Protection	0/0	0
12WSY	BLOCK HEATER, ENGINE {Phillips} 120V/750W, for Cummins ISB/B6.7 Engines	0/0	0
	<u>Includes</u> : BLOCK HEATER SOCKET Receptacle Type; Mounted below Drivers Door		
12VYP	ENGINE CONTROL, REMOTE MOUNTED No Provision for Remote Mounted Engine Control	0/0	0
12WCG	HOSE CLAMPS, RADIATOR HOSES {R.G. Ray Mini Flex Seal} Coil Spring/"T"-Bolt Constant Torque Type, for Radiator Hoses over 1" I.D.	0/0	0
12VXU	THROTTLE, HAND CONTROL Engine Speed Control for PTO; Electronic, Stationary Pre-Set, Two Speed Settings; Mounted on Steering Wheel	0/0	0

TRANSMISSION

INTERNATIONAL[®]**Vehicle Specifications
2023 HV607 SBA (HV607)**

February 14, 2022

<u>Code</u>	<u>Description</u>	<u>F/R Wt</u> (lbs)	<u>Tot Wt</u> (lbs)
13AVL	TRANSMISSION, AUTOMATIC {Allison 3500 RDS} 5th Generation Controls, Wide Ratio, 6-Speed with Double Overdrive, with PTO Provision, Less Retarder, Includes Oil Level Sensor, with 80,000-lb GVW and GCW Max, On/Off Highway	239/44	283
13WUS	ALLISON SPARE INPUT/OUTPUT for Rugged Duty Series (RDS) and Regional Haul Series (RHS), General Purpose Trucks, Package Number 223, Modified for Single Input Auto Neutral	0/0	0
13WUA	AUTOMATIC NEUTRAL Allison Transmission Shifts to Neutral When Parking Brake is Engaged and Remains in Neutral When Parking Brake is Disengaged	0/0	0
13WVV	NEUTRAL AT STOP Allison Transmission Shifts to Neutral When Service Brake is Depressed and Vehicle is at Stop; Remains in Neutral Until Service Brake is Released	0/0	0
13XAM	PTO LOCATION Dual, Customer Intends to Install PTO at Left and/or Right Side of Transmission	0/0	0
13WYU	SHIFT CONTROL PARAMETERS {Allison} 3000 or 4000 Series Transmissions, Performance Programming	0/0	0
13WLP	TRANSMISSION OIL Synthetic; 29 thru 42 Pints	0/0	0
13WET	TRANSMISSION SHIFT CONTROL Column Mounted Stalk Shifter, Not for Use with Allison 1000 & 2000 Series Transmission	1/0	1

CLUTCH

11001	CLUTCH Omit Item (Clutch & Control)	0/0	0
-------	-------------------------------------	-----	---

REAR AXLES, SUSPENSIONS

14AGR	AXLE, REAR, SINGLE {Dana Spicer 21060D} Single Reduction, 21,000-lb Capacity, Driver Control Locking Differential, 200 Wheel Ends . Gear Ratio: 5.57	0/51	51
14VAH	SUSPENSION, REAR, SINGLE 23,500-lb Capacity, Vari-Rate Springs, with 4500-lb Capacity Auxiliary Rubber Springs	0/62	62
14WMN	AXLE, REAR, LUBE {EmGard FE-75W-90} Synthetic Oil; 1 thru 29.99 Pints	0/0	0
14WAP	SHOCK ABSORBERS, REAR (2)	0/45	45

FRONT AXLES

2ARW	AXLE, FRONT NON-DRIVING {Meritor MFS-12-143A} Wide Track, I-Beam Type, 12,000-lb Capacity	0/0	0
------	---	-----	---

FRONT SUSPENSIONS

3ADC	SUSPENSION, FRONT, SPRING Parabolic Taper Leaf, Shackle Type, 12,000-lb Capacity, with Shock Absorbers	0/0	0
------	--	-----	---

CABS, COWLS, BODIES

16030	CAB Conventional, Day Cab	0/0	0
16XTK	ACCESS, CAB Bright Aluminum, Driver & Passenger Sides, Two Steps per Door, for use with Day Cab or Extended Cab	-14/-2	-16
16BAM	AIR CONDITIONER with Integral Heater and Defroster	56/0	56

INTERNATIONAL***Vehicle Specifications
2023 HV607 SBA (HV607)**

February 14, 2022

<u>Code</u>	<u>Description</u>	<u>F/R Wt</u> (lbs)	<u>Tot Wt</u> (lbs)
16VKB	CAB INTERIOR TRIM Classic, for Day Cab <u>Includes</u> : CONSOLE, OVERHEAD Molded Plastic with Dual Storage Pockets, Retainer Nets and CB Radio Pocket; Located Above Driver and Passenger : DOME LIGHT, CAB Door Activated and Push On-Off at Light Lens, Timed Theater Dimming, Integral to Overhead Console, Center Mounted : SUN VISOR (2) Padded Vinyl; 2 Moveable (Front-to-Side) Primary Visors, Driver Side with Toll Ticket Strap	0/0	0
16WSK	CAB REAR SUSPENSION Air Bag Type	0/0	0
16WLS	FRESH AIR FILTER Attached to Air Intake Cover on Cowl Tray in Front of Windshield Under Hood	0/0	0
16GED	GAUGE CLUSTER Base Level; English with English Electronic Speedometer <u>Includes</u> : GAUGE CLUSTER DISPLAY: Base Level (3" Monochromatic Display), Premium Level (5" LCD Color Display); Odometer, Voltmeter, Diagnostic Messages, Gear Indicator, Trip Odometer, Total Engine Hours, Trip Hours, MPG, Distance to Empty/ Refill for : GAUGE CLUSTER Speedometer, Tachometer, Engine Coolant Temp, Fuel Gauge, DEF Gauge, Oil Pressure Gauge, Primary and Secondary Air Pressure : WARNING SYSTEM Low Fuel, Low DEF, Low Oil Pressure, High Engine Coolant Temp, Low Battery Voltage (Visual and Audible), Low Air Pressure (Primary and Secondary)	0/0	0
16HHE	GAUGE, AIR CLEANER RESTRICTION {Filter-Minder} with Black Bezel, Mounted in Instrument Panel	2/0	2
16HGH	GAUGE, OIL TEMP, AUTO TRANS for Allison Transmission	1/0	1
16SDC	GRAB HANDLE, EXTERIOR (2) Chrome, Towel Bar Type, with Anti-Slip Rubber Inserts, for Cab Entry Mounted Left and Right Side at B-Pillar	6/0	6
16WLM	HOURLMETER, PTO for Customer Provided PTO; with Indicator Light and Hourmeter in Gauge Cluster Includes Return Wire for PTO Feedback Switch	2/0	2
16XJN	INSTRUMENT PANEL Flat Panel	0/0	0
16HKT	IP CLUSTER DISPLAY On Board Diagnostics Display of Fault Codes in Gauge Cluster	0/0	0
16SNR	MIRRORS (2) C-Loop, Power Adjust, Heated, LED Clearance Lights, Bright Heads and Arms, 7.5" x 14" Flat Glass, Includes 7.5" x 7" Convex Mirrors, for 102" Load Width <u>Notes</u> : Mirror Dimensions are Rounded to the Nearest 0.5"	0/0	0
16JNT	SEAT, DRIVER {National 2000} Air Suspension, High Back with Integral Headrest, Vinyl, Isolator, 1 Chamber Lumbar, with 2 Position Front Cushion Adjust, -3 to +14 Degree Angle Back Adjust	-15/-3	-18
16SMH	SEAT, TWO-MAN PASSENGER {National} Fixed Back, Integrated Headrest in Both Occupant Positions, Vinyl, with Under Seat Storage Compartment	49/22	71
16WJU	WINDOW, POWER (2) and Power Door Locks, Left and Right Doors, Includes Express Down Feature	5/0	5

FRAMES

INTERNATIONAL®**Vehicle Specifications
2023 HV607 SBA (HV607)**

February 14, 2022

<u>Code</u>	<u>Description</u>	<u>F/R Wt</u> (lbs)	<u>Tot Wt</u> (lbs)
1CBU	FRAME RAILS Heat Treated Alloy Steel (120,000 PSI Yield); 10.125" x 3.580" x 0.312" (257.2mm x 90.9mm x 8.0mm); 480.0" (12192) Maximum OAL	77/591	668
1WRN	BRACKET, CAB MOUNT Heavy Duty	15/2	17
1LNN	BUMPER, FRONT Contoured, Steel, Chrome Plated	-18/2	-16
1SAM	CROSSMEMBER, REAR, AF (2)	-11/51	40
1570	TOW HOOK, FRONT (2) Frame Mounted	8/0	8
1LEH	LICENSE PLATE HOLDER Single Plate, Swing Type, Mounted Below Front Bumper	3/0	3
1WGT	WHEELBASE RANGE 258" (650cm) Through and Including 311" (790cm)	474/474	0

BRAKES

4091	BRAKE SYSTEM, AIR Dual System for Straight Truck Applications	0/0	0
	<u>Includes</u> : BRAKE LINES Color and Size Coded Nylon : DRAIN VALVE Twist-Type : GAUGE, AIR PRESSURE (2) Air 1 and Air 2 Gauges; Located in Instrument Cluster : PARKING BRAKE CONTROL Yellow Knob, Located on Instrument Panel : PARKING BRAKE VALVE For Truck : QUICK RELEASE VALVE On Rear Axle for Spring Brake Release: 1 for 4x2, 2 for 6x4 : SPRING BRAKE MODULATOR VALVE R-7 for 4x2, SR-7 with relay valve for 6x4/8x6		
4AZA	AIR BRAKE ABS {Bendix AntiLock Brake System} 4-Channel (4 Sensor/4 Modulator) Full Vehicle Wheel Control System	0/0	0
4XDC	BRAKES, FRONT {Meritor 15X4 Q-PLUS CAST} Air S-Cam Type, Cast Spider, Fabricated Shoe, Double Anchor Pin, Size 15" X 4", 13,200-lb Capacity	-70/0	-70
4EXP	BRAKE CHAMBERS, FRONT AXLE {Bendix} 20 SqIn	2/0	2
4LAG	SLACK ADJUSTERS, FRONT {Gunitex} Automatic	14/0	14
4XDR	BRAKES, REAR {Meritor 16.5X7 Q-PLUS CAST} Air S-Cam Type, Cast Spider, Fabricated Shoe, Double Anchor Pin, Size 16.5" X 7", 23,000-lb Capacity per Axle	0/52	52
4EXU	BRAKE CHAMBERS, REAR AXLE {Bendix EverSure} 30/30 SqIn Spring Brake	0/7	7
4LGG	SLACK ADJUSTERS, REAR {Gunitex} Automatic	0/14	14
4SPA	AIR COMPRESSOR {Cummins} 18.7 CFM	0/0	0
4EBT	AIR DRYER {Bendix AD-IP} with Heater	17/10	27
4VKC	AIR DRYER LOCATION Mounted Inside Left Rail, Back of Cab	16/5	21
4WZJ	AIR TANK LOCATION (2) : One Mounted Under Each Rail, Front of Rear Suspension, Parallel to Rail	-18/37	19
4732	DRAIN VALVE {Berg} with Pull Chain, for Air Tank	0/0	0

STEERING

5PSA	STEERING GEAR {Sheppard M100} Power	0/0	0
------	-------------------------------------	-----	---

INTERNATIONAL[®]**Vehicle Specifications
2023 HV607 SBA (HV607)****February 14, 2022**

<u>Code</u>	<u>Description</u>	<u>F/R Wt</u> (lbs)	<u>Tot Wt</u> (lbs)
5710	STEERING COLUMN Tilting and Telescoping	18/1	19
5CAW	STEERING WHEEL 4-Spoke, 18" Dia., Black	0/0	0

DRIVELINES

6DGB	DRIVELINE SYSTEM {Dana Spicer} SPL140, for 4x2/6x2	3/21	24
------	--	------	----

EXHAUST SYSTEMS

7BLV	EXHAUST SYSTEM Horizontal Aftertreatment System, Frame Mounted Right Side Under Cab, for Single Short Horizontal Tail Pipe, Frame Mounted Right Side Back of Cab	57/-2	55
7BEU	AFTERTREATMENT COVER Aluminum	9/2	11
7SCP	ENGINE EXHAUST BRAKE for Cummins ISB/B6.7/ISL/L9 Engine with Variable Vane Turbo Charger	0/0	0

ELECTRICAL SYSTEMS

8000	ELECTRICAL SYSTEM 12-Volt, Standard Equipment	0/0	0
	<u>Includes</u> : DATA LINK CONNECTOR For Vehicle Programming and Diagnostics In Cab : HAZARD SWITCH Push On/Push Off, Located on Instrument Panel to Right of Steering Wheel : HEADLIGHT DIMMER SWITCH Integral with Turn Signal Lever : PARKING LIGHT Integral with Front Turn Signal and Rear Tail Light : STARTER SWITCH Electric, Key Operated : STOP, TURN, TAIL & B/U LIGHTS Dual, Rear, Combination with Reflector : TURN SIGNAL SWITCH Self-Cancelling for Trucks, Manual Cancelling for Tractors, with Lane Change Feature : WINDSHIELD WIPER SWITCH 2-Speed with Wash and Intermittent Feature (5 Pre-Set Delays), Integral with Turn Signal Lever : WINDSHIELD WIPERS Single Motor, Electric, Cowl Mounted : WIRING, CHASSIS Color Coded and Continuously Numbered		
8GXD	ALTERNATOR {Leece-Neville AVI160P2013} Brush Type, 12 Volt, 160 Amp Capacity, Pad Mount, with Remote Sense	0/0	0
8RPP	ANTENNA Shark Fin, Roof Mounted	1/0	1
8THB	BACK-UP ALARM Electric, 102 dBA	0/3	3
8XDU	BATTERY BOX Steel, with Aluminum Cover, 14" Wide, 2-3 Battery Capacity, Mounted Left Side Under Cab	-10/4	-6
8XHD	BATTERY DISCONNECT SWITCH 300 Amp, Disconnects Charging Circuits, Locks with Padlock, Cab Mounted	2/0	2
8MSG	BATTERY SYSTEM {Fleetrite} Maintenance-Free, (3) 12-Volt 1980CCA Total, Top Threaded Stud	35/18	53
8HAE	BODY BUILDER WIRING Rear of Frame; Includes Sealed Connectors for Tail/Amber Turn/Marker/ Backup/Accessory Power/Ground and Sealed Connector for Stop/Turn	0/3	3
8XAH	CIRCUIT BREAKERS Manual-Reset (Main Panel) SAE Type III with Trip Indicators, Replaces All Fuses	0/0	0
8518	CIGAR LIGHTER Includes Ash Cup	1/0	1



<u>Code</u>	<u>Description</u>	<u>F/R Wt</u> (lbs)	<u>Tot Wt</u> (lbs)
8WPH	CLEARANCE/MARKER LIGHTS (5) {Truck Lite} Amber LED Lights, Flush Mounted on Cab or Sunshade	0/0	0
8XNY	HEADLIGHTS Halogen	0/0	0
8XHN	HORN, AIR Single Trumpet, Black, with Lanyard Pull Cord	3/0	3
8VAY	HORN, ELECTRIC Disc Style	0/0	0
8WWJ	INDICATOR, LOW COOLANT LEVEL with Audible Alarm	0/0	0
8WBW	JUMP START STUD Remote Mounted	2/0	2
8XHR	POWER SOURCE, ADDITIONAL Auxiliary Power Outlet (APO) with USB Port, Located in the Instrument Panel	1/0	1
8RPS	RADIO AM/FM/WB/Clock/Bluetooth/USB Input/Auxiliary Input	3/0	3
8RMV	SPEAKERS (2) 6.5" Dual Cone Mounted in Doors	5/0	5
8XKL	STARTING MOTOR {Mitsubishi Electric Automotive America 90P47} 12-Volt, with Soft-Start	0/0	0
8WPZ	TEST EXTERIOR LIGHTS Pre-Trip Inspection will Cycle all Exterior Lamps Except Back-up Lights	0/0	0
8XGT	TURN SIGNALS, FRONT Includes LED Side Turn Lights Mounted on Fender	0/0	0

FRONT END

9WBM	FRONT END Tilting, Fiberglass, with Three Piece Construction, Sloped Front	-66/-4	-70
9WAC	BUG SCREEN Mounted Behind Grille	5/0	5
9HAD	GRILLE Chrome	0/0	0
9AAB	LOGOS EXTERIOR Model Badges	0/0	0
9AAE	LOGOS EXTERIOR, ENGINE Badges	0/0	0

SPEEDOMETER, TOOLS, MISC

10XAN	FIRE EXTINGUISHER 5 lb Class A B C	9/1	10
10XAP	FIRE EXTINGUISHER BRACKET Mounted Left Side Driver Seat	1/0	1
10060	PAINT SCHEMATIC, PT-1 Single Color, Design 100	0/0	0
	<u>Includes</u> : PAINT SCHEMATIC ID LETTERS "WL"		
10761	PAINT TYPE Base Coat/Clear Coat, 1-2 Tone	0/0	0
10WCY	SAFETY TRIANGLES	6/0	6

FUEL TANKS

15SXJ	FUEL TANK Top Draw, Non-Polished Aluminum, 24" Dia, 50 US Gal (189L), Mounted Left Side, Under Cab	32/2	34
15WCN	DEF TANK 5 US Gal (19L) Capacity, Frame Mounted Outside Left Rail, Under Cab	4/13	17
15924	FUEL TANK STRAPS Bright Finish Stainless Steel	0/0	0



INTERNATIONAL®**Vehicle Specifications
2023 HV607 SBA (HV607)**

February 14, 2022

<u>Code</u>	<u>Description</u>	<u>F/R Wt</u> (lbs)	<u>Tot Wt</u> (lbs)
15LMS	FUEL/WATER SEPARATOR 12 VDC Electric Heater, Includes Pre-Heater, Includes Water-in-Fuel Sensor, Cummins Supplied on Engine	1/-1	0

WHEELS, TIRES - FRONT

27DTJ	WHEELS, FRONT {Maxion 90541} DISC; 22.5x8.25 Rims, Painted Steel, 2-Hand Hole, 10-Stud, 285.75mm BC, Hub-Piloted, Flanged Nut, with Steel Hubs	-4/0	-4
7372135415	(2) TIRE, FRONT 11R22.5 Load Range G HSR2 (CONTINENTAL), 498 rev/mile, 75 MPH, All-Position	0/0	0

WHEELS, TIRES - REAR

28DTJ	WHEELS, REAR {Maxion 90541} DUAL DISC; 22.5x8.25 Rims, Painted Steel, 2-Hand Hole, 10-Stud, 285.75mm BC, Hub-Piloted, Flanged Nut, with Steel Hubs	0/-8	-8
7372135425	(4) TIRE, REAR 11R22.5 Load Range G HDL2 DL ECO PLUS (CONTINENTAL), 491 rev/mile, 75 MPH, Drive	0/68	68

WHEELS MISC OPTIONS

29PAR	PAINT IDENTITY, FRONT WHEELS Disc Front Wheels; with Vendor Applied White Powder Coat Paint	0/0	0
29PAS	PAINT IDENTITY, REAR WHEELS Disc Rear Wheels; with Vendor Applied White Powder Coat Paint	0/0	0

BODY INTEGRATION

60AAG	BDY INTG, REMOTE POWER MODULE Mounted Inside Cab Behind Driver Seat, Up to 6 Outputs & 6 Inputs, Max 20 amp per Channel, Max 80 amp Total; Includes 1 Switch Pack with Latched Switches	0/0	0
60AKG	BDY INTG, PTO ACCOMMODATION for (3) Latched Rocker Switches, (1) PTO Switch, (2) Generic Switches to Control (3) 30 amp relays, with Programmable Interlocks, for Body Builder Hook up in the Engine Compartment Left Side, Recommended for Automatic Transmissions	0/0	0
60ABC	BDY INTG, REMOTE START/STOP To Start and Stop Vehicle Engine	0/0	0
60AJG	BDY INTG, THROTTLE CONTROL Accommodation for Single Customer Mounted External Engine Speed Control Switch, for Utility Applications, Programmable Mode for Various Switch Actions and Engine Speed Control Option, Only with Vehicle Stopped and Park Brake is Applied (requires 1 Remote Power Module input)	0/0	0

Services Section:**WARRANTY**

4012B	WARRANTY Standard for HV507, HV50B, HV607 Models, Effective with Vehicles Built July 1, 2017 or Later, CTS-2025A	0/0	0
-------	--	-----	---

Total Component Weight:**6865/4127 10992****Body/Allied Equipment**

<u>Code</u>	<u>Description</u>	<u>F/R Wt</u>	<u>Tot Wt</u>
Goods Purchased			
<u>Code</u>	<u>Description</u>	<u>F/R Wt</u>	<u>Tot Wt</u>

License No. N -2022-00278

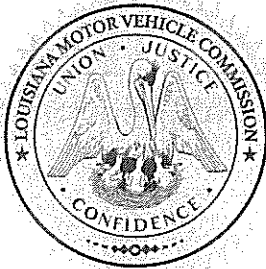
2022-2024

Not Transferable

Louisiana Motor Vehicle Commission

This Certifies that
Brett A. Carrubba of Slidell, LA
has been licensed by this Commission as a
MOTOR VEHICLE SALESMAN.
Employed by Motor Vehicle Dealer Licensee
N -2022-00115
Empire Truck Sales, LLC
210 Frontage Road
Slidell, LA 70458

pursuant to the laws of the State of Louisiana for the period ending March 31, 2024.



Dated April 1, 2022

Louisiana Motor Vehicle Commission

LA House Executive Director

NOTE: This Certificate is to be retained by the Employer.
It is to be returned by the Employer to the Commission
Office at 3017 Kingman Street, Metairie, LA 70006, within
ten days of the termination of the Salesman's employment

Termination Date:

Louisiana Motor Vehicle Commission

License No. N -2022-00278

2022-2024

This is to Certify that
Brett A. Carrubba of Slidell, LA
has been duly licensed by this Commission as a
MOTOR VEHICLE SALESMAN.
Employed by Motor Vehicle Dealer Licensee
N -2022-00115 Empire Truck Sales, LLC
Slidell, LA 70458

For the period ending 3/31/2024.
Louisiana Motor Vehicle Commission

LA House
Executive Director
(OVER)

Dated: 4/01/2022

License No. N - 2022 - 00115
DPS Code: NSEC

2022 - 2024

Not Transferable
Valid Only at Address Below

Louisiana Motor Vehicle Commission

This Certifies that

Empire Truck Sales, LLC
210 Frontage Road
Slidell, LA 70458
Paul Lonnie Cook, Dealer-Operator

is duly licensed as a
New Motor Vehicle Dealer
of the following make or makes

Detroit Diesel, Freightliner Trucks, Western Star Trucks

For the period ending March 31, 2024,

unless license is sooner revoked.

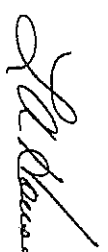
In Witness whereof, LOUISIANA MOTOR VEHICLE COMMISSION, under and by virtue of the authority vested in it by the laws of the State of Louisiana, has caused this license to be issued with its seal imprinted hereon.

LOUISIANA MOTOR VEHICLE COMMISSION

Dated April 1, 2022

Signed, Sealed and Attested





Executive Director

(To be prominently displayed in place of business)

**MEETING OF THE
MEMBERS
OF
EMPIRE TRUCK SALES, LLC**

A meeting of the Members of EMPIRE TRUCK SALES, LLC, was held on January 10, 2023, whereby a resolution was caused authorizing Brett Carrubba, Sales Representative, by his signature, to enter into any and all contractual obligations on behalf of this company as related to Jefferson Parish, Louisiana – Bid # 50-00140726 for a one-time purchase of a Grapple Truck for the Jefferson Parish Department of Parkways, with a bid date of Thursday, January 12, 2023, at 2:00 p.m.



Brian W. Clegg, CPA
Secretary

Non-Public Works Bid

AFFIDAVIT

STATE OF Louisiana

PARISH/COUNTY OF St. Tammany

BEFORE ME, the undersigned authority, personally came and appeared: January 18th, 2013

Brett A. Corubba, (Affiant) who after being by me duly sworn, deposed and said that he/she is the fully authorized Representative of Empire Truck Sales, LLC (Entity), the party who submitted a bid in response to Bid Number SD-20140726 to the Parish of Jefferson.

Affiant further said:

Campaign Contribution Disclosures

(Choose A or B, if option A is indicated please include the required attachment):

Choice A

Attached hereto is a list of all campaign contributions, including the date and amount of each contribution, made to current or former elected officials of the Parish of Jefferson by Entity, Affiant, and/or officers, directors and owners, including employees, owning 25% or more of the Entity during the two-year period immediately preceding the date of this affidavit or the current term of the elected official, whichever is greater. Further, Entity, Affiant, and/or Entity Owners have not made any contributions to or in support of current or former members of the Jefferson Parish Council or the Jefferson Parish President through or in the name of another person or legal entity, either directly or indirectly.

Choice B X

there are NO campaign contributions made which would require disclosure under Choice A of this section.

Debt Disclosures

(Choose A or B, if option A is indicated please include the required attachment):

Choice A _____ Attached hereto is a list of all debts owed by the affiant to any elected or appointed official of the Parish of Jefferson, and any and all debts owed by any elected or appointed official of the Parish to the Affiant.

Choice B X There are **NO** debts which would require disclosure under Choice A of this section.

Affiant further said:

That Affiant has employed no person, corporation, firm, association, or other organization, either directly or indirectly, to secure the public contract under which he received payment, other than persons regularly employed by the Affiant whose services in connection with the construction, alteration or demolition of the public building or project or in securing the public contract were in the regular course of their duties for Affiant; and

[The remainder of this page is intentionally left blank.]

That no part of the contract price received by Affiant was paid or will be paid to any person, corporation, firm, association, or other organization for soliciting the contract, other than the payment of their normal compensation to persons regularly employed by the Affiant whose services in connection with the construction, alteration or demolition of the public building or project were in the regular course of their duties for Affiant.



Signature of Affiant



Printed Name of Affiant

SWORN AND SUBSCRIBED TO BEFORE ME

ON THE 12th DAY OF January, 2023



Notary Public



Printed Name of Notary



Notary/Bar Roll Number



My commission expires With Life.



CERTIFICATE OF LIABILITY INSURANCE

DATE (MM/DD/YYYY)
03/21/2022

THIS CERTIFICATE IS ISSUED AS A MATTER OF INFORMATION ONLY AND CONFERS NO RIGHTS UPON THE CERTIFICATE HOLDER. THIS CERTIFICATE DOES NOT AFFIRMATIVELY OR NEGATIVELY AMEND, EXTEND OR ALTER THE COVERAGE AFFORDED BY THE POLICIES BELOW. THIS CERTIFICATE OF INSURANCE DOES NOT CONSTITUTE A CONTRACT BETWEEN THE ISSUING INSURER(S), AUTHORIZED REPRESENTATIVE OR PRODUCER, AND THE CERTIFICATE HOLDER.

IMPORTANT: If the certificate holder is an ADDITIONAL INSURED, the policy(ies) must have ADDITIONAL INSURED provisions or be endorsed. If SUBROGATION IS WAIVED, subject to the terms and conditions of the policy, certain policies may require an endorsement. A statement on this certificate does not confer rights to the certificate holder in lieu of such endorsement(s).

PRODUCER FEDERATED MUTUAL INSURANCE COMPANY HOME OFFICE: P.O. BOX 328 OWATONNA, MN 55060		CONTACT NAME: CLIENT CONTACT CENTER PHONE (A/C, No, Ext): 888-333-4949 FAX (A/C, No): 507-446-4664 E-MAIL ADDRESS: CLIENTCONTACTCENTER@FEDINS.COM	
		INSURER(S) AFFORDING COVERAGE	HAIC #
		INSURER A: FEDERATED MUTUAL INSURANCE COMPANY	13935
INSURED EMPIRE TRUCK SALES LLC 345 HIGHWAY 49 S RICHLAND, MS 39218-9439		338-924-4	
		INSURER B:	
		INSURER C:	
		INSURER D:	
		INSURER E:	
		INSURER F:	

COVERAGES

CERTIFICATE NUMBER: 338

REVISION NUMBER: 0

THIS IS TO CERTIFY THAT THE POLICIES OF INSURANCE LISTED BELOW HAVE BEEN ISSUED TO THE INSURED NAMED ABOVE FOR THE POLICY PERIOD INDICATED. NOTWITHSTANDING ANY REQUIREMENT, TERM OR CONDITION OF ANY CONTRACT OR OTHER DOCUMENT WITH RESPECT TO WHICH THIS CERTIFICATE MAY BE ISSUED OR MAY PERTAIN, THE INSURANCE AFFORDED BY THE POLICIES DESCRIBED HEREIN IS SUBJECT TO ALL THE TERMS, EXCLUSIONS AND CONDITIONS OF SUCH POLICIES. LIMITS SHOWN MAY HAVE BEEN REDUCED BY PAID CLAIMS.

INSR LTR	TYPE OF INSURANCE	ADDL INSR	SUBR WVD	POLICY NUMBER	POLICY EFF (MM/DD/YYYY)	POLICY EXP (MM/DD/YYYY)	LIMITS
A	<input checked="" type="checkbox"/> COMMERCIAL GENERAL LIABILITY <input type="checkbox"/> CLAIMS-MADE <input checked="" type="checkbox"/> OCCUR	N	N	6089082	04/01/2022	04/01/2023	EACH OCCURRENCE \$500,000
	DAMAGE TO RENTED PREMISES (EA OCCURRENCE) \$100,000						
	MED EXP (Any one person) EXCLUDED						
	PERSONAL & ADV INJURY \$500,000						
GEN'L AGGREGATE LIMIT APPLIES PER: <input checked="" type="checkbox"/> POLICY <input type="checkbox"/> PROJECT <input type="checkbox"/> LOC OTHER:							
A	AUTOMOBILE LIABILITY <input type="checkbox"/> ANY AUTO <input type="checkbox"/> OWNED AUTOS ONLY <input type="checkbox"/> SCHEDULED AUTOS <input type="checkbox"/> HIRED AUTOS ONLY <input type="checkbox"/> NON-OWNED AUTOS ONLY	N	N	6089086	04/01/2022	04/01/2023	COMBINED SINGLE LIMIT (EA ACCIDENT)
	BODILY INJURY (Per person)						
	BODILY INJURY (Per accident)						
	PROPERTY DAMAGE (Per accident)						
A	<input checked="" type="checkbox"/> UMBRELLA LIAB <input checked="" type="checkbox"/> OCCUR <input type="checkbox"/> EXCESS LIAB <input type="checkbox"/> CLAIMS-MADE	N	N	6089086	04/01/2022	04/01/2023	EACH OCCURRENCE \$10,000,000
	DED <input type="checkbox"/> RETENTION						AGGREGATE
A	WORKERS COMPENSATION AND EMPLOYERS' LIABILITY ANY PROPRIETOR/PARTNER/EXECUTIVE OFFICER/MEMBER EXCLUDED? (Mandatory in NH) If yes, describe under DESCRIPTION OF OPERATIONS below	N/A	N	1804082	04/01/2022	04/01/2023	<input checked="" type="checkbox"/> PER STATUTE <input type="checkbox"/> OTHER
	E.L. EACH ACCIDENT \$500,000						
	E.L. DISEASE - EA EMPLOYEE \$500,000						
	E.L. DISEASE - POLICY LIMIT \$500,000						
A	AUTO DEALER LIABILITY	Y	N	6089082	04/01/2022	04/01/2023	AUTO LIAB - EA ACCIDENT \$500,000
	GENERAL LIABILITY						
	- EACH ACCIDENT \$500,000 - AGGREGATE \$1,000,000						

DESCRIPTION OF OPERATIONS / LOCATIONS / VEHICLES (ACORD 101, Additional Remarks Schedule, may be attached if more space is required)
SEE ATTACHED PAGE

CERTIFICATE HOLDER

338-924-4
JEFFERSON PARISH PURCHASING DEPARTMENT
200 DERBIGNY ST STE 4400
GRETN, LA 70053-5878

338 0

CANCELLATION

SHOULD ANY OF THE ABOVE DESCRIBED POLICIES BE CANCELLED BEFORE THE EXPIRATION DATE THEREOF, NOTICE WILL BE DELIVERED IN ACCORDANCE WITH THE POLICY PROVISIONS.

AUTHORIZED REPRESENTATIVE

Michael G Kern

© 1988-2015 ACORD CORPORATION. All rights reserved.



AGENCY CUSTOMER ID: 338-924-4

LOC #:

ADDITIONAL REMARKS SCHEDULE

Page 1 of 1

AGENCY FEDERATED MUTUAL INSURANCE COMPANY		NAMED INSURED EMPIRE TRUCK SALES LLC 345 HIGHWAY 49 S RICHLAND, MS 39218-9439
POLICY NUMBER SEE CERTIFICATE # 338.0		
CARRIER SEE CERTIFICATE # 338.0	NAIC CODE	EFFECTIVE DATE: SEE CERTIFICATE # 338.0

ADDITIONAL REMARKS

THIS ADDITIONAL REMARKS FORM IS A SCHEDULE TO ACORD FORM,

FORM NUMBER: 25 FORM TITLE: CERTIFICATE OF LIABILITY INSURANCE

ADDITIONAL INSURED ALSO INCLUDE: THE JEFFERSON PARISH, ITS DISTRICTS DEPARTMENTS AND AGENCIES UNDER THE DIRECTION OF THE PARISH PRESIDENT AND THE PARISH COUNCIL.

AUTO DEALER COVERAGE IS PROVIDED UNDER POLICY #6089082 WITH THE FOLLOWING LIMITS:

AUTO LIAB - EA ACCIDENT \$500,000

GENERAL LIABILITY - EACH ACCIDENT \$500,000

GENERAL LIABILITY - AGGREGATE \$1,000,000

Request for Taxpayer Identification Number and Certification

Give Form to the
requester. Do not
send to the IRS.

▶ Go to www.irs.gov/FormW9 for instructions and the latest information.

Print or type.
See Specific Instructions on page 3.

1 Name (as shown on your income tax return). Name is required on this line; do not leave this line blank. G&S HOLDINGS, LLC	
2 Business name/disregarded entity name, if different from above EMPIRE TRUCK SALES, LLC	
3 Check appropriate box for federal tax classification of the person whose name is entered on line 1. Check only one of the following seven boxes. <input type="checkbox"/> Individual/sole proprietor or single-member LLC <input type="checkbox"/> C Corporation <input type="checkbox"/> S Corporation <input type="checkbox"/> Partnership <input type="checkbox"/> Trust/estate <input checked="" type="checkbox"/> Limited liability company. Enter the tax classification (C=C corporation, S=S corporation, P=Partnership) ▶ P <small>Note: Check the appropriate box in the line above for the tax classification of the single-member owner. Do not check LLC if the LLC is classified as a single-member LLC that is disregarded from the owner unless the owner of the LLC is another LLC that is not disregarded from the owner for U.S. federal tax purposes. Otherwise, a single-member LLC that is disregarded from the owner should check the appropriate box for the tax classification of its owner.</small> <input type="checkbox"/> Other (see instructions) ▶	4 Exemptions (codes apply only to certain entities, not individuals; see instructions on page 3): Exempt payee code (if any) _____ Exemption from FATCA reporting code (if any) _____ <small>(Applies to accounts maintained outside the U.S.)</small>
5 Address (number, street, and apt. or suite no.) See instructions. P. O. BOX 54325	Requester's name and address (optional)
6 City, state, and ZIP code JACKSON, MS 39288-4325	
7 List account number(s) here (optional)	

Part I Taxpayer Identification Number (TIN)

Enter your TIN in the appropriate box. The TIN provided must match the name given on line 1 to avoid backup withholding. For individuals, this is generally your social security number (SSN). However, for a resident alien, sole proprietor, or disregarded entity, see the instructions for Part I, later. For other entities, it is your employer identification number (EIN). If you do not have a number, see *How to get a TIN*, later.

Note: If the account is in more than one name, see the instructions for line 1. Also see *What Name and Number To Give the Requester* for guidelines on whose number to enter.

Social security number									
	-		-						
or									
Employer identification number									
0	3	-	0	3	7	4	0	8	3

Part II Certification

Under penalties of perjury, I certify that:

1. The number shown on this form is my correct taxpayer identification number (or I am waiting for a number to be issued to me); and
2. I am not subject to backup withholding because: (a) I am exempt from backup withholding, or (b) I have not been notified by the Internal Revenue Service (IRS) that I am subject to backup withholding as a result of a failure to report all interest or dividends, or (c) the IRS has notified me that I am no longer subject to backup withholding; and
3. I am a U.S. citizen or other U.S. person (defined below); and
4. The FATCA code(s) entered on this form (if any) indicating that I am exempt from FATCA reporting is correct.

Certification instructions. You must cross out item 2 above if you have been notified by the IRS that you are currently subject to backup withholding because you have failed to report all interest and dividends on your tax return. For real estate transactions, item 2 does not apply. For mortgage interest paid, acquisition or abandonment of secured property, cancellation of debt, contributions to an individual retirement arrangement (IRA), and generally, payments other than interest and dividends, you are not required to sign the certification, but you must provide your correct TIN. See the instructions for Part II, later.

Sign Here	Signature of U.S. person ▶ <i>Michelle Haney</i>	Date ▶ 1 11 2022
------------------	--	-------------------------

General Instructions

Section references are to the Internal Revenue Code unless otherwise noted.

Future developments. For the latest information about developments related to Form W-9 and its instructions, such as legislation enacted after they were published, go to www.irs.gov/FormW9.

Purpose of Form

An individual or entity (Form W-9 requester) who is required to file an information return with the IRS must obtain your correct taxpayer identification number (TIN) which may be your social security number (SSN), individual taxpayer identification number (ITIN), adoption taxpayer identification number (ATIN), or employer identification number (EIN), to report on an information return the amount paid to you, or other amount reportable on an information return. Examples of information returns include, but are not limited to, the following.

- Form 1099-INT (interest earned or paid)

- Form 1099-DIV (dividends, including those from stocks or mutual funds)
- Form 1099-MISC (various types of income, prizes, awards, or gross proceeds)
- Form 1099-B (stock or mutual fund sales and certain other transactions by brokers)
- Form 1099-S (proceeds from real estate transactions)
- Form 1099-K (merchant card and third party network transactions)
- Form 1098 (home mortgage interest), 1098-E (student loan interest), 1098-T (tuition)
- Form 1099-C (canceled debt)
- Form 1099-A (acquisition or abandonment of secured property)

Use Form W-9 only if you are a U.S. person (including a resident alien), to provide your correct TIN.

If you do not return Form W-9 to the requester with a TIN, you might be subject to backup withholding. See What is backup withholding, later.

Freightliner (FTL)



Run Smart™

Freightliner Level I

Level I Coverage is not available for vehicles in these vocations:		Refuse Packer, Logging, Mining, Oilfield
Category Determinants		
Road Surface — most severe in-transit between sites	100% on-highway smooth concrete or asphalt	
GCW	92,000 lb/41 730 kg or less	
Axles and Their Manufacturer's GVW Rating		
2-axle unit	35,000 lb/15 876 kg or less	
3-axle unit	58,000 lb/26 308 kg or less	
4-axle unit	71,000 lb/32 205 kg or less	
5-axle unit	N/A	

Coverage ¹		
Description	Time ²	Distance ²
Basic Vehicle	1 Year	100,000 mi/161 000 km
Battery	1 Year	100,000 mi/161 000 km
Brightwork	6 Months	Unlimited
Cab Corrosion/Perforation	5 Years	Unlimited
Cab Structure	3 Years	300,000 mi/ 483 000 km
Corrosion	6 Months	Unlimited
Crossmembers	6 Years	750,000 mi/1 207 000 km
Diesel Emission 2010 ³	5 Years	100,000 mi/161 000 km
Frame Rails	6 Years	750,000 mi/1 207 000 km
GHG14 ⁴ (Medium Heavy Duty to Heavy Heavy Duty Trucks)	5 Years	100,000 mi/161 000 km
GHG14 ⁴ (Medium Heavy Duty to Heavy Heavy Duty Tractors)	5 Years	100,000 mi/161 000 km
GHG14 ⁴ Tire	2 Years	24,000 mi/38 400 km
Paint	1 Year	100,000 mi/161 000 km
Paint, Chassis	6 Months	Unlimited
Front Axle ⁵	3 Years	300,000 mi/483 000 km
Rear Axle	3 Years	300,000 mi/483 000 km
Transfer Case	3 Years	300,000 mi/483 000 km
Transmission	3 Years	300,000 mi/483 000 km
Detroit Front Axle ⁵ (File Direct)		
Post-Model Year 2011 ⁶	2 Years	Unlimited
Post-Model Year 2011 ⁷	3 Years	300,000 mi/ 483 000 km
Post-Model Year 2011 ⁸	5 Years	750,000 mi/1 200 000 km
Detroit Rear Axle (File Direct)		
Post-Model Year 2011 ⁶	2 Years	Unlimited
Post-Model Year 2011 ⁷	3 Years	300,000 mi/ 483 000 km
Post-Model Year 2011 ⁸	5 Years	750,000 mi/1 200 000 km
Detroit DT-12 Transmission ⁹ (File Direct)	5 Years	750,000 mi/1 200 000 km

¹Coverage may vary; check vehicle's actual warranty coverage online via OWL's Coverage Info/Check Coverage screen.

²Time or distance, whichever comes first

³Applies to vehicles equipped with EPA 2010 compliant diesel engines.

⁴Applies to models 2013 and later domiciled in the United States; check actual warranty online via OWL's Coverage Info/Check Coverage screen for coverage listed as "GHG14..."

⁵Front Axle coverage is also applicable to gliders.

⁶Medium Duty – General Service: Warranty coverage is determined by Gross Combination Weight Rating, road surface, and vocation. Please see www.ddcsn.com for specific coverage details.

⁷Heavy Duty – General Service: Warranty coverage is determined by Gross Combination Weight Rating, road surface, and vocation. Please see www.ddcsn.com for specific coverage details.

⁸Heavy Duty – Highway: Warranty coverage is determined by Gross Combination Weight Rating, road surface, and vocation. Please see www.ddcsn.com for specific coverage details.

⁹Detroit Transmission: Warranty coverage is determined by Gross Combination Weight Rating, road surface, and vocation. Please see www.ddcsn.com for specific coverage details.

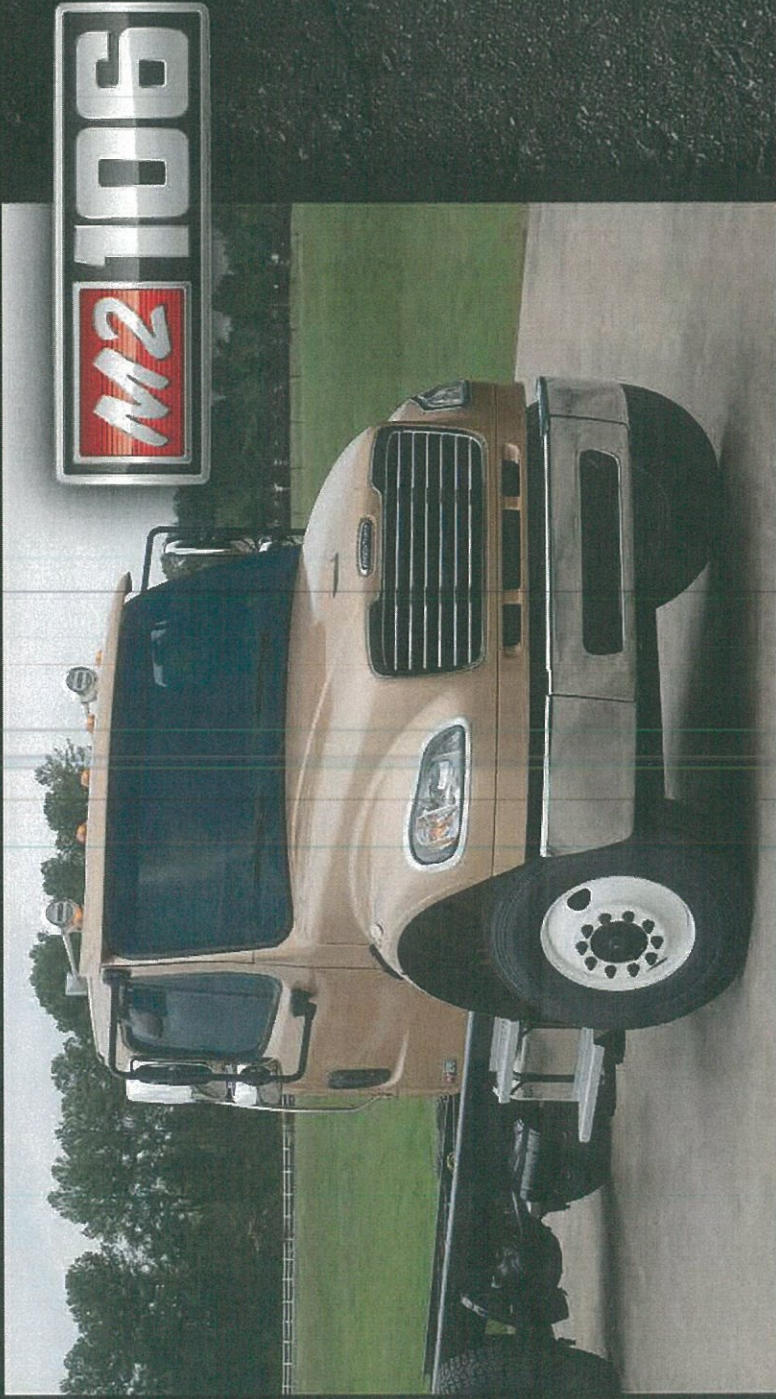


WORK SMART™

M2 106

VOCATIONAL MEDIUM DUTY





THE ALL-AROUND PERFORMER.

The Freightliner M2 106 is a versatile member of the Freightliner Trucks family, offering the perfect platform for a variety of applications. With a GVWR of up to 56,000 pounds, this medium-duty vehicle supports a wide range of bodies and chassis-mounted equipment. A multiplex wiring system, clear frame rails and a variety of exhaust packages help you get the configuration you need for the job at hand. And the optional SmartPlex™ Electrical System offers a seamless electrical interface with the body for easier custom programming.

The M2 106 is available as a truck or a tractor and comes standard with a powerful yet fuel efficient Cummins® ISB6.7 engine or an optional ISL9 engine with up to 350 hp. It offers the choice of manual, automatic or automated transmissions from Eaton® Fuller® and Allison®. And the optional Freightliner SmartShift® feature makes shifting easy with just a fingertip push or pull of a column-mounted hand lever.

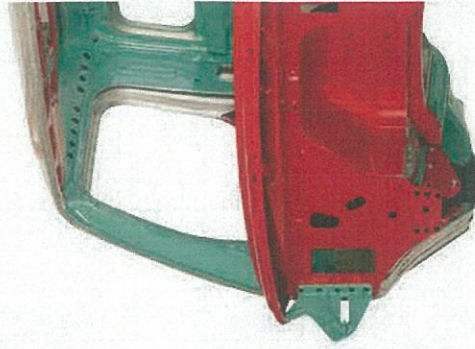
The stylish and functional design of the Freightliner M2 106 features a sloped, aerodynamic hood, a low-profile dash and a 2,500 square-inch windshield that gives drivers best-in-class visibility. The vehicle also provides up to a 55-degree wheel cut, set-back front axle and swept-back bumper for excellent maneuverability in tight situations.

Available cab configurations:

106" BRC Day Cab

WHERE TOUGHNESS MEETS EFFICIENCY.

We've applied sophisticated engineering. First, our cabs are lightweight, yet extremely reinforced with e-coated steel and tolerances with Henrob rivets and welds that meet the most stringent impact tests. Plus, the chassis includes channel frame rails. The result is a ter RBM ratio up to 3.7 million inch-pou handle whatever job is thrown at it, da



Aluminum Structural Reinforcements

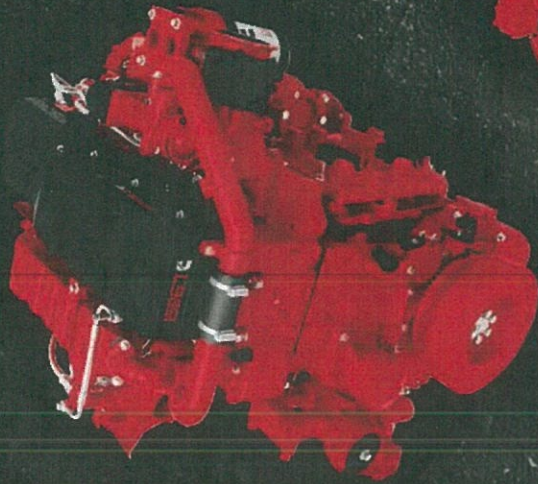
- Corrugated floor, roof and back-of-cab
- Meets Swedish A-pillar test and ECE R29 and SAE J2422 roof strength requirements
- Available in day cab, extended cab
- 2,500 square-inch one-piece winds
- Wide door openings with low step-in
- Steel firewall for solid mounting of c



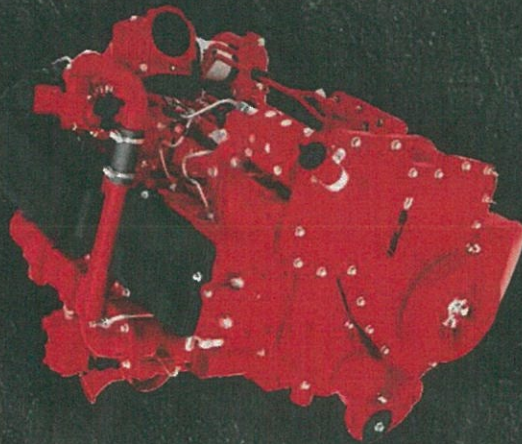


- Corrosion resistant reinforcement
- 2,500 sq ft of greater visibility
- Strong fiberglass body
- Optional heated windshield

- Cummins ISB engine standard, optional ISL engine
- Optional bright trim package



Cummins®
ISB6.7 Engine



Cummins®
ISL9 Engine

ENGINES	
Cummins ISB6.7*	•
200 - 325 hp / 520 - 750 lb-ft torque	
Cummins ISL9	•
260 - 350 hp / 720 - 1150 lb-ft torque	
TRANSMISSIONS	
Eaton Fuller Manual	•
Eaton Fuller Automated	•
Allison Automatic	•
AXLES (UP TO)	
Steel*	16k
AWD Steer	16k
Single Drive	30k
Tandem	46k

* Higher ratings are available for approved applications



- Easy headlight bulb access
- Halogen composite headlights for easy replacement



SPECIFICATIONS AND OPTIONS

STANDARD FEATURES

- 106" BBC steel-reinforced aluminum day cab
- Set-back front axle position @ 37.6"
- Strong, durable cab and hood
- Halogen composite headlights
- Rubber cab mounts
- 63" x 14" rear window
- Up to 55-degree wheel cut, depending on wheel equipment
- Cummins® ISB engine with 200 HP, 520 lb-ft torque available with up to 16,000 lbs. front and 46,000 lbs. rear axles
- Rear cab cross member flush with back of cab to allow for outriggers
- Supports a wide range of bodies and chassis-mounted equipment

OPTIONAL FEATURES

- Emergency service application HP ratings available
- Large selection of wheelbases with frames and frame reinforcements
- Air cab mounts
- Freightliner AirLiner® rear suspension
- Full inner-frame reinforcement
- Door-mounted down-view mirrors and a passenger door lower window enhances driver vision around truck and surroundings
- Wing dash with ergonomic design brings controls and gauges closer to the driver and provides space for up to eight more switches
- SmartPlex™ Electrical System expansion
- MP3, Satellite and Bluetooth
- Heated windshield
- Cummins ISL engine with up to 350 HP, 1150 lb-ft torque
- Cummins ISB engine with up to 325 HP, 750 lb-ft torque



FREIGHTLINERTRUCKS.COM



Competitive financing available through Daimler Truck Financial. For the Freightliner Trucks dealer nearest you, call 1-800-FTL-HELP. www.freightlinertrucks.com. 15M, 4/15. FTL/MC-B-1391. Specifications are subject to change without notice. Freightliner Trucks is registered to ISO 9001:2008 and ISO 14001:2004. Copyright © 2015. Daimler Trucks North America LLC. All rights reserved. Freightliner Trucks is a division of Daimler Trucks North America LLC, a Daimler company.

LIFTING EXPECTATIONS

75XRSERIES

SERCO

LOADERS

A GRYB COMPANY



LIFTING EXPECTATIONS

For those that require a lightweight yet powerful loader, the SERCO 75XR was developed for you. Whether you are handling pipeline materials or heavy sawlogs and pulpwood, the 75XR will make your job easier.

Lift Capacity

8,136 lbs. lift capacity at 10 ft. radius (less weight of attachment).

Boom Reach

22ft. knuckleboom options to 26ft., 22ft. & 23ft. boom with 3ft. and 4ft. squirt (25ft.-27ft. overall).

Rotation

572 degrees on double-row turntable bearing.

Stabilizers

Telescoping A-frame type with 110°/5/8" spread at grade level for adjustment on uneven terrain.

Hydraulic System

Tandem hydraulic circuits to allow simultaneous operation without power loss.

Tandem gear pump providing 30 & 30 GPM at 1,400 pump RPM.

Stack type control valves located under seat for increased operator visibility and safety.

55 gallon truck frame mounted hydraulic reservoir with high capacity, 10-micron return line filter and removable access cover.

Folding joystick controls standard. 4-wire reinforced hoses in all pressure applications.

Oversize main pressure and return lines with bent tube-type fittings to eliminate heat problems.

Miscellaneous

- LED light kits.
- Full range of attachments including continuous rotation grapples.
- Three-point greasing system for turntable bearing and pinion gear.
- Side-mounted aluminum tank built to SERCO specifications.
- Seat belt included.
- Bolt-on gland cylinders.

NEXT-LEVEL PERFORMANCE

Capacities shown are maximum theoretical lift capacities based on loader system pressure rating indicated, loader is mounted on adequately sized vehicle, stabilizers deployed in down position and the entire unit is on firm, level ground. It is highly recommended that prior to installation of this loader onto truck that operation of loader on customer vehicle.





**SERCO
75XR**

YOUR NEW LOADER AWAITS!

CONTACT OUR TEAM TODAY!

(218) 834-5118

serco@sercoloaders.com

sercoloaders.com

