

Item #1

PROJECT DETAILS:

Project Name:

Distribution Partner:

Notes:

MODEL SPECIFICATIONS:

Model	Watt (W)	Lumens (LM)	Voltage	CCT (K)
LWPF30	30W	3,600LM	100-277V	4000K 5000K
LWPF40	40W	5,100LM	100-277V 347-480V	4000K 5000K
LWPF60	60W	7,900LM	100-277V 347-480V	4000K 5000K
LWPF90	90W	10,500LM	100-277V 347-480V	4000K 5000K
LWPF125	125W	15,000LM	100-277V 347-480V	4000K 5000K

APPLICATIONS:

 Building
Entryways

 Walkways,
Pathways

 Perimeter
Lighting

 General
Lighting

ORDERING GUIDE:

Model	Watt (W)	CCT (K)	Voltage (V)	Finish (y)	Photocell (a)	Battery Backup (a)
LWPF LED Wall Pack Fixture	30 30W 40 40W 60 60W 90 90W 125 125W	40 4000K 50 5000K	U 120-277V H 347-480V	B Black D Dark Bronze W White	Blank No Photocell PA 120-277V Photocell	Blank No EM Battery EML EM Battery Backup (15-55VDC) EMH EM Battery Backup (50-180VDC)

Choose Your Model Specifications Above:

LWPF	90 90W	50 5000K	U 120-277V	D Dark Bronze	PA 120-277V Photocell	EML EM Battery Backup (15-55VDC)
-------------	-----------------	-------------------	---------------------	------------------------	-----------------------------------	--

 Example Ordering Number: **LWPF90-50-UD-PA-EML**

PRODUCT DIAGRAMS:

Housing

Suitable for both indoor and outdoor application, also suitable for J-BOX mounting and surface mounting.

Photocell

Optional photocell allows for security and energy saving

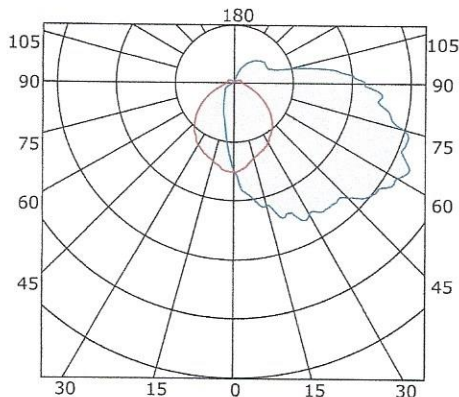
Lens

Polycarbonate optical lens with UV stabilizers do not exhibit yellowing and deformation

1/2inch Threaded Hole
 3pcs hole can support wires coming out from the hole for easier wire connections

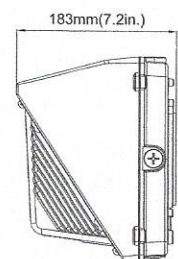
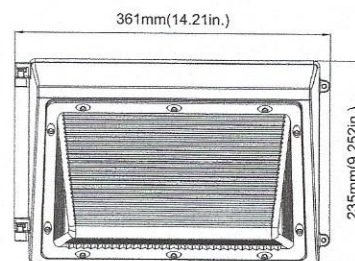


PHOTMETRICS:



SIZING/MEASUREMENTS:

Model	Length (in)	Height (in)	Width (in)	Weight (lb)
LWPF30	14.21	9.25	7.20	6.525
LWPF40	14.21	9.25	7.20	6.525
LWPF60	14.21	9.25	7.20	6.724
LWPF90	14.21	9.25	7.20	7.319
LWPF125	14.21	9.25	7.20	8.157



WARRANTY:

 **7 Year**  **75,000-Hours**

The lesser of 7-Years after shipment by Seller, or 75,000-Hours of use.

ARCHIPELAGO will not under any circumstances whether as a result of breach of contract, breach of warranty, tort, strict liability or otherwise be liable for consequential, incidental, special or exemplary damages including but not limited to, loss of profits or revenues, loss of use of the above product or any other goods or associated equipment or damage to any associated equipment, cost of capital, cost of substituted products, facilities of services, downtime cost, or claims of claimant's customers. ARCHIPELAGO's liability on any claim of any kind for any loss or damages arising out of, resulting from or concerning any aspect of this agreement of from the product or services furnished hereunder shall not exceed the price of the specific product or products listed above which gives rise to the claim. This warranty gives the claimant specific legal rights. The claimant may also have other rights, which vary from state to state.

For a complete documentation of ARCHIPELAGO Lighting, Inc. warranty and limitation of liability, please refer to www.archipelagolighting.com.

CERTIFICATIONS:



QUESTIONS?:

Archipelago Lighting, Inc.

4615 State Street, Montclair, CA 91763

www.archipelagolighting.com

sales@archipelagolighting.com

ARCHIPELAGO LIGHTING:

Archipelago Lighting, Inc. manufactures commercial and residential lighting products in USA and China. We are a team of passionate lighting professionals whose goal is to modernize the lighting industry through disruptive LED lighting products. We manufacture a wide variety of products to support the growing adoption of energy efficient LED applications.





PROJECT DETAILS

Items 2&3

Project Name

Fixture Schedule

Product Number

Notes

KEY FEATURES

- SELECTABLE WATTAGE AND CCT THROUGH DRIVER-BASED DIP-SWITCHES
- PMMA LENS FOR SUPERIOR NON-FADE LUMINOUS OUTPUT
- STRENGTHENED ULTRA LIGHTWEIGHT 6063 ALUMINUM FRAME
- MICROCHIP PROGRAMED LIGHT-ENGINE FOR CONSISTENT CCT
- HIGH-DENSITY LED CHIPS FOR UNIFORM LIGHT OUTPUT
- EASY INSTALLATION & LOW MAINTENANCE COST
- 7-YEAR, 75,000HR WARRANTY
- UL DAMP LOCATION LISTED
- DLC PREMIUM LISTED

MODEL SPECIFICATIONS

Model	Selectable Watt	Selectable CCT	Voltage	LPW
LB LP14	20W /	3000K /	120-347V	130LM/W
	25W /	3500K /		
	30W /	4000K /		
	35W /	5000K /		
LB LP22	20W /	3000K /	120-347V	130LM/W
	25W /	3500K /		
	30W /	4000K /		
	35W /	5000K /		
LB LP24	35W /	3000K /	120-347V	130LM/W
	40W /	3500K /		
	45W /	4000K /		
	50W /	5000K /		

KEY SPECIFICATIONS

- **LED Chip:** Samsung 2835, LM80, IP-Protected
- **Lightweight Frame:** 6063 Aluminum
- **Operating Temp:** -10°F — 125°F
- **IP:** IP40 Indoor Damp Location
- **Input Voltage:** 120-347V
- **PF:** >0.9 Non-Flicker
- **Efficacy:** 130LM/W
- **Dimming:** 0-10V
- **THD:** <15%
- **CRI:** >80

APPLICATIONS



Office Space



Schools



Hospitalities



Commercial Buildings

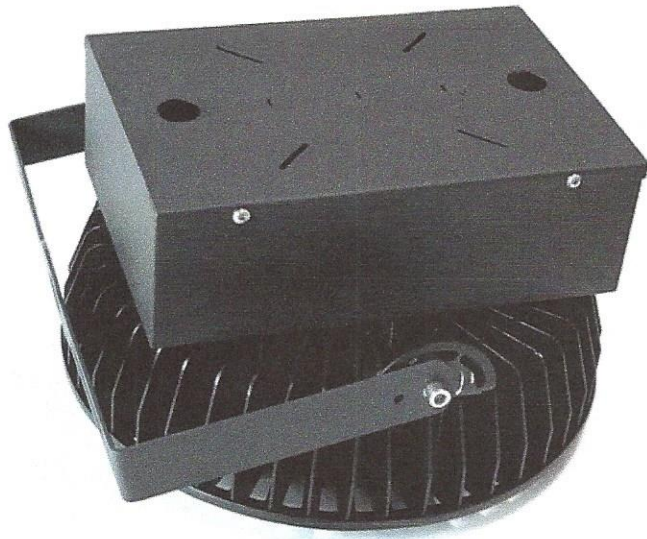
ORDERING GUIDE

Model Series	Size	CCT (K)	Option Code
LB LP LED Back-Lit Panel	14 1x4	xx:	A2 0-10V Dimmable Selectable Wattage & CCT Panel *
	22 2x2	30 3000K	A6 Selectable (-A2) Panel + Occupancy Sensor
		35 3500K	A7 Selectable (-A2) Panel + Emergency Driver
	24 2x4	40 4000K	A8 Selectable (-A2) Panel + Occupancy Sensor + Emergency Driver
		50 5000K	

* Standard option

Choose Your Model Specifications Above:

LB LP
24
xx
A2
Example Ordering Number:
LB LP24-xx-A2



PROJECT DETAILS

Item #4

Project Name

Fixture Schedule

Product Number

Notes

MODEL SPECIFICATIONS

Model	Watt	Lumens	Voltage	CCT	LPW	Replaces
LRHB100	100W	13,500LM			135LM/W	250W MH
LRHB150	150W	20,250LM			135LM/W	400W MH
LRHB200	200W	27,000LM			135LM/W	600W MH
LRHB240	240W	32,400LM	120-277V 347-480V	3000K 4000K 5000K	135LM/W	1000W MH
LRHB300	300W	45,000LM			150LM/W	1300W MH
LRHB400	400W	60,000LM			150LM/W	1500W MH
LRHB500	500W	75,000LM			150LM/W	2000W MH

KEY FEATURES

- EASY INSTALLATION & LOW MAINTENANCE COST
- IP65-RATED, SURFACE ELECTROSTATIC SPRAY TREATMENT
- AVAILABLE WITH SENSORS, EMERGENCY, AND OTHER COMPATIBLE OPTIONS
- IMPACT-RESISTING GLASS LENS (POLYCARBONATE AVAILABLE)
- RUGGED INDUSTRIAL DESIGN W/ ALUMINUM ALLOY
- REPLACING 250W — 1800W HID
- 7-YEAR, 75,000HR WARRANTY
- UL WET LOCATION LISTED
- DLC PREMIUM LISTED

KEY SPECIFICATIONS

- **LED Chip:** Samsung 2835, LM80, IP-Protected
- **Input Voltage:** 120-277V (U) or 347-480V (H)
- **Operating Temp:** -40°F — 150°F
- **Built-in Surge Protection:** 4KV
- **Efficacy:** 135LM/W — 150LM/W
- **Beam Angle:** 120°
- **PF:** 0.9 Non-Flicker
- **THD:** <15%
- **CRI:** >70

APPLICATIONS



Warehouse



Gymnasium



Natatorium



Production
Facilities



Storage
Facilities

ORDERING GUIDE

Model Series	Watt (W)	CCT (K)	Voltage (V)	Option Code
LRHB LED Round Highbay	100 100W			DM Fixture ONLY *
	150 150W			SD Fixture + Microwave Sensor **
	200 200W			EM Fixture + Emergency Backup **
	240 240W			DE Fixture + Sensor + Emergency Backup **
	300 300W	30 3000K	U 100-277V	RM Sensor Remote Controller
	400 400W	40 4000K	H 200-480V	AB Adjustable Steel Mounting Bracket
	500 500W	50 5000K		GL Low-Glare Conical Lens for LRHB-AR
				AR060 Aluminum Reflector 60°
				AR090 Aluminum Reflector 90°
				AR120 Aluminum Reflector 120°
				PR045 Polycarbonate Reflector 45°
				PR090 Polycarbonate Reflector 90°
				PR120 Polycarbonate Reflector 120°

* Standard option

** Integral Controls & Emergency Drivers

Choose Your Model Specifications Above:

LRHB

500

50

U

DM

Example Ordering Number: LRHB500-50-UDM

Item #5



UNIVERSAL SPECIFICATIONS:

- **Housing:** Durable die-cast aluminum
- **Input Voltage:** 120-277Vac or 347-480Vac
- **Operating Temp:** -40°F — 130°F
- **IP:** UL Wet Location Listed
- **PF:** >0.9 Non-Flicker
- **Efficacy:** >115LM/W
- **Dimming:** 1-10V
- **THD:** <20%
- **CRI:** >70



APPLICATIONS:



Building Entryways



Walkways, Pathways



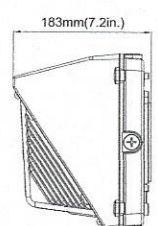
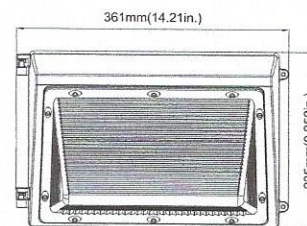
Perimeter Lighting



General Lighting

MODEL SPECIFICATIONS:

Model	Watt (W)	Lens	Lumens (LM)	Voltage	LWP	Replaces
LWPF30	30W	3,600LM	100-277V	4000K 5000K	120LM/W	100W MH
LWPF40	40W	5,100LM	100-277V 347-480V	4000K 5000K	128LM/W	175W MH
LWPF60	60W	7,900LM	100-277V 347-480V	4000K 5000K	122LM/W	250W MH
LWPF90	90W	10,500LM	100-277V 347-480V	4000K 5000K	120LM/W	320W MH
LWPF125	125W	15,000LM	100-277V 347-480V	4000K 5000K	120LM/W	400W MH



ORDERING GUIDE:

Model	Watt (W)	CCT (K)	Voltage (V)	Finish (y)	Photocell (a)	Battery Backup (a)
LWPF LED Wall Pack Fixture	30 30W 40 40W 60 60W 90 90W 125 125W	40 4000K 50 5000K	U 120-277V H 347-480V	B Black D Dark Bronze W White	Blank No Photocell PA 120-277V Photocell	Blank No EM Battery EML EM Battery Backup (15-55VDC) EMH EM Battery Backup (50-180VDC)

Choose Your Model Specifications Above:

LWPF	90 90W	50 5000K	U 120-277V	D Dark Bronze	PA 120-277V Photocell	EML EM Battery Backup (15-55VDC)
-------------	-----------------	-------------------	---------------------	------------------------	--------------------------------	---

Example Ordering Number: **LWPF90-50-UD-PA-EML**