

Techtop Industries

Nameplate and Performance Data

NAMEPLATE DATA		
	60 Hz.	50 Hz.
Horsepower	5.0	5.0
Frame Size	184T	
Speed, RPM	1745	1450
Voltage	230/460	190/380
# Phase	3	
Full Load Amps	12.8/6.4	15.8/7.9
Power Factor	0.82	-
Nominal Efficiency	89.5	-
3/4 Load Efficiency	89.6	-
Service Factor	1.25	1.0
Duty	Cont. / S1	
FL Temp Rise °C	52.0	80.0
Enclosure	TEFC	
Ambient Temp °C	40	
KVA Code	J	G
FL Amps. @ 208 V	14.15	-
Insulation Class	F	
NEMA Design	B	
Weight	100.0	
DE Bearing	6306ZZ	
NDE Bearing	6306ZZ	
dB No-Load	74.0	
Rotor Wk ² , Lb-Ft ²	0.0154	
Start Capacitor		
Start Capacitor V	-	
Run Capacitor		
Run Capacitor V	-	
Number of Leads	9	
Connection	YY/Y	
Coil Resistance	2.45	

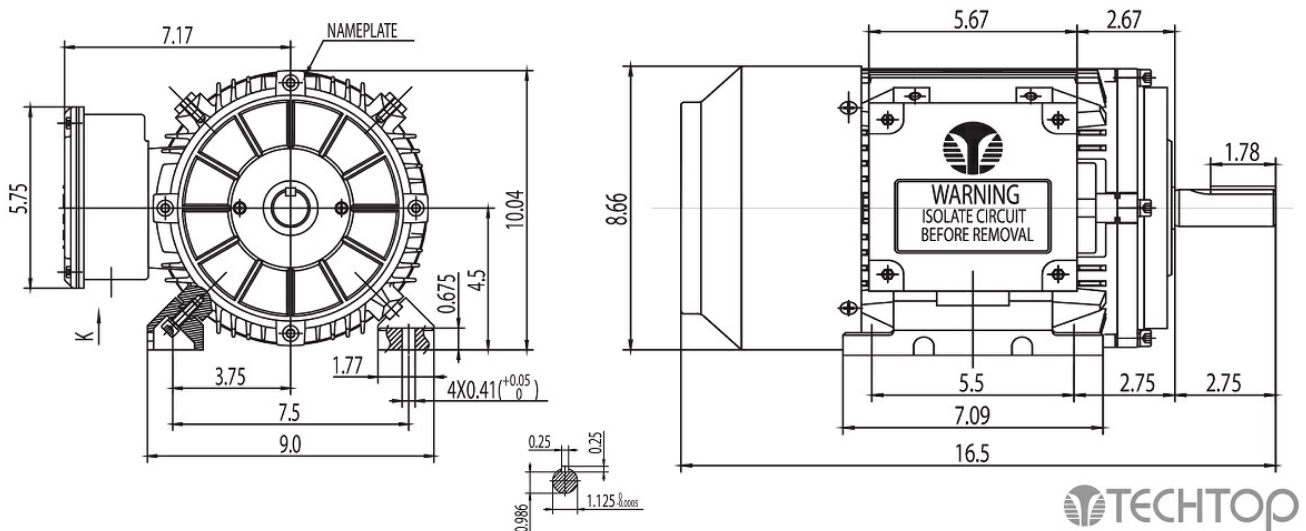
Motor Model:		GR3-CI-TF-184T-4-B-D-5				
Performance Load Values:						
% Load	Horsepower	Current, Amps	Input power, Kilowatts	Speed, RPM	Efficiency	PF
0	-	2.89	0.155	-	-	0.067
25	1.3	3.153	1.096	1788.4	84.4	0.436
50	2.5	3.927	2.068	1777.2	89.5	0.661
75	3.8	4.951	3.073	1764.9	90.3	0.779
100	5.0	6.18	4.119	1751.0	89.8	0.837
125	6.3	7.569	5.21	1736.8	88.8	0.864
150	7.5	-	-	-	-	-
SF	6.3	7.569	5.21	1736.8	88.8	0.864

	Torque, Lb-Ft	% Full Load Torque	Speed, RPM	Current Amps.
Locked Rotor Torque	37.874	253.0	-	53.1
Pull Up Torque	33.683	225.0	-	-
Breakdown Torque	54.191	362.0	-	-
Full Load	14.97	100.0	1751.0	6.18

Speed Torque Curve

Please contact Techtop for image.

Dimensional Drawing



Dimensions are for reference only. Allowance should be made for minor deviations in non standard specified properties.

3D Image Link: Not available for this motor

Techtop Industries
2815 Colonnades Court
Peachtree Corners, GA 30071
Tel: 678-436-5540
E-Mail: info@techttopind.com