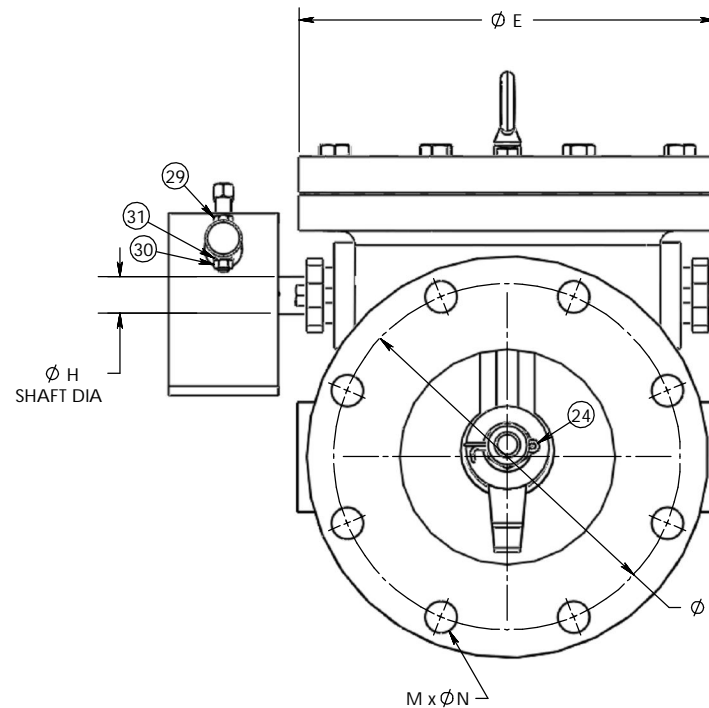
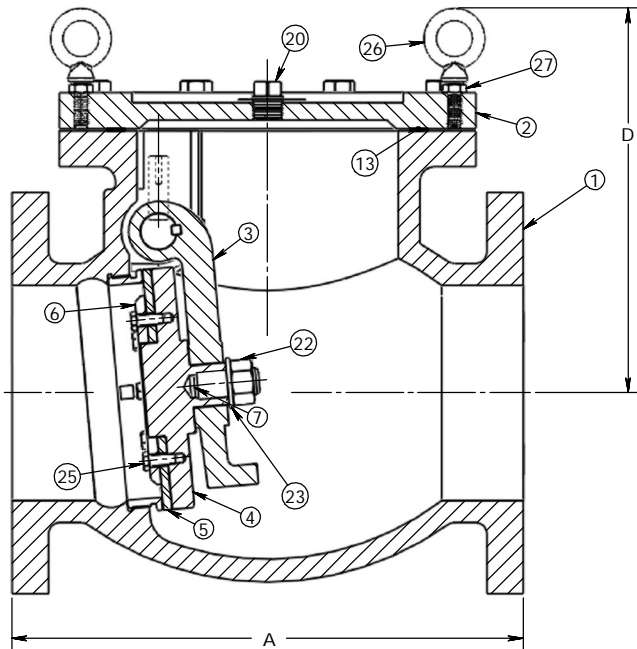
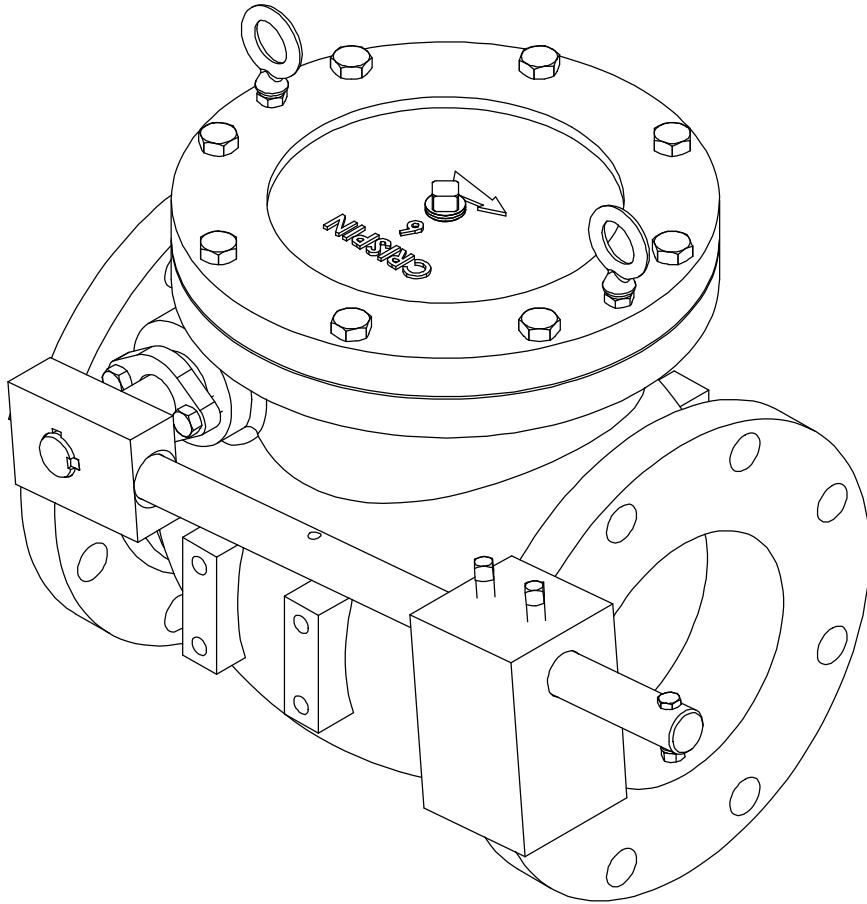


SIZE	MODEL NO.	A	B	Ø C	D	Ø E	F	G	Ø H	J	Ø L	M x Ø N	WT. (LB)
3"	SWL31-LW	9.50	.75	7.50	8.20	7.31	12.00	6.80	.75	3.00	6.00	4 x .75	68
4"	SWL41-LW	11.50	.94	9.00	9.00	8.06	12.00	7.23	.87	3.75	7.50	8 x .75	98
6"	SWL61-LW	14.00	1.00	11.00	10.54	11.42	18.00	9.29	1.00	4.02	9.50	8 x .88	188
8"	SWL81-LW	19.50	1.12	13.50	12.50	13.19	18.00	11.10	1.25	5.75	11.75	8 x .88	317
10"	SWL101-LW	24.50	1.19	16.00	14.94	16.50	18.00	13.20	1.25	7.25	14.25	12 x 1.00	500
12"	SWL121-LW	27.50	1.25	19.00	16.63	18.25	18.00	14.41	1.50	7.75	17.00	12 x 1.00	670
14"	SWL141-LW	31.00	1.38	21.00	18.94	21.50	24.75	16.90	2.00	8.50	18.75	12 x 1.12	1000
16"	SWL161-LW	36.00	1.44	23.50	21.83	24.50	24.75	18.41	2.00	10.00	21.25	16 x 1.12	1328
18"	SWL181-LW	40.00	1.56	25.00	22.80	27.25	30.75	20.91	2.00	11.00	22.75	16 x 1.25	1888
20"	SWL201-LW	40.00	1.69	27.50	24.82	29.25	30.75	22.91	2.00	10.00	25.00	20 x 1.25	2200
24"	SWL241-LW	48.00	1.88	32.00	28.88	33.50	36.68	26.22	2.75	12.00	29.50	20 x 1.38	3519
30"	SWL301-LW	60.00	2.18	38.75	35.63	41.75	37.06	31.91	3.12	15.00	36.00	28 x 1.38	6248
36"	SWL361-LW	63.00	2.44	46.00	40.31	48.50	44.00	37.41	3.50	13.50	42.75	32 x 1.62	9135



- NOTES:
 1. 250 PSIG MAX. WORKING PRESSURE
 2. 300 PSIG HYDROSTATIC TEST PRESSURE

CRISPIN VALVES		
DRAWN	NAME	DATE
CHECKED	hWg	08/12/10
DIMENSIONS ARE IN INCHES		
DO NOT SCALE DRAWING		
FILE LOCATION: \\S1\data\Drawings\PARTS\SWING_C HECK\GA350-8\		
SIZE	DWG. NO.	REV
C	SWL-3-36-LW	0
SCALE: 0.38:1	WT: 186.93 LB	SHEET 1 OF 2



PARTS LIST			
ITEM	DESCRIPTION	MATERIAL	QTY
1	BODY & BODY SEAT ASSY	A536 GR 65-45-12 & A351 GR CF8M	1
2	COVER	DUCTILE IRON A536 Gr 65-45-12	1
3	DISC ARM	DUCTILE IRON A536 Gr 65-45-12	1
4	DISC	DUCTILE IRON A536 Gr 65-45-12	1
5	DISC SEAT	D2000 BUNA N RUBBER 70 DUROMETER	1
6	SEAT RETAINER	AISI 304	1
7	STUD	18-8 STAINLESS STEEL	1
8	PIVOT SHAFT	A276 TYPE 304	1
9	PIVOT SHAFT PIN	BEARING BRONZE ALLOY 932 (SAE 660)	1
10	PACKING GLAND	CARBON STEEL	2
11	PIVOT SHAFT BUSHING	BEARING BRONZE ALLOY 932 (SAE 660)	2
12	INNER PIVOT SHAFT KEY	A276 TYPE 316	1
13	COVER GASKET	KLINGERSIL C-4401	1
14	LEVER WELDMENT	CARBON STEEL	1
15	LEVER WEIGHT	ASTM A36	1
16	OUTER PIVOT SHAFT KEY	A276 TYPE 316	1
17	PACKING	PTFE IMPREGNATED, INTERLOCK BRAID	8
18	HX HD SCREW	18-8 STAINLESS STEEL	4
19	HEX HEAD SCREW	STEEL, GR 5, ZINC PLTD	8
20	PIPE PLUG, SQ. HD.	CARBON STEEL	1
21	HEX HEAD SCREW	18-8 STAINLESS STEEL	2
22	HEX NUT	18-8 STAINLESS STEEL	1
23	FLAT WASHER, M18 DIN 125	18-8 STAINLESS STEEL	1
24	COTTER PIN	STEEL, ZINC PLATED	1
25	HEX HEAD SCREW	18-8 STAINLESS STEEL	8
26	EYEBOLT	STEEL, ZINC PLATED	2
27	HEX HEAD JAM NUT	STEEL, ZINC PLATED	2
28	SQ HD SET SCREW, CUP POINT	CARBON STEEL	3
29	HEX HEAD SCREW	STEEL, GR 5, ZINC PLTD	1
30	STD HEX HEAD NUT	STEEL, ZINC PLATED	1
31	LOCK WASHER	STEEL, ZINC PLATED	1

			CRISPIN VALVES		
DRAWN	NAME hWg	DATE 08/12/10	TITLE: 3" THRU 36" CL 125/150 SWING CHECK VALVE w/ LEVER WEIGHT		
CHECKED	-	-			
DIMENSIONS ARE IN INCHES DO NOT SCALE DRAWING					
FILE LOCATION: \\S1\data\Drawings\PARTS\SWING_C HECK\GA350-BV			SIZE C	DWG. NO. SWL-3-36-LW	REV 0
SCALE: 0.38:1			WT: 186.93 LB	SHEET 2 OF 2	