

DATE: 6/08/2018

INVITATION TO BID  
THIS IS NOT AN ORDER

Page: 4

BID NO.: 50-00123294

**JEFFERSON PARISH**

PURCHASING DEPARTMENT  
P.O. BOX 9  
GRETN, LA. 70054-0009  
504-364-2678

VENDOR: 27118 BLANK BID COPY VENDOR

BUYER: MCamardelle

As per LSA-RS 47:301 et seq., all governmental bodies are excluded from payment of sales taxes to any Louisiana taxing body. Quotations shall be based on F.O.B. Agency warehouse or jobsite, anywhere within the Parish as designated by the Purchasing Department.

JEFFERSON PARISH reserves the right to cancel all or any part of an order if not shipped promptly. No charges will be allowed for parking or cartage unless specified in quotation. The order must not be filled at a higher price than quoted. JEFFERSON PARISH reserves the right to cancel at any time and for any reason by issuing a THIRTY (30) day written notice to the contractor.

JEFFERSON PARISH is expecting all products to be new and all work to be done in workman-like manner, according to standard practices. Any deviations or alteration from the specifications must be indicated on the bid form for each item and upon request, product data for same must be submitted by the time specified by the Purchasing Department.

**DELIVERY: FOB JEFFERSON PARISH**

INDICATE DELIVERY DATE ON EQUIPMENT AND SUPPLIES

3 weeks ARO

INDICATE STARTING TIME (IN DAYS) FOR CONSTRUCTION WORK

N/A

INDICATE COMPLETION TIME (IN DAYS) FOR CONSTRUCTION WORK

N/A

In the event that addenda are issued with this bid, bidders MUST acknowledge all addenda on the bid form. Bidder must acknowledge receipt of an addendum on the bid form as indicated. Failure to acknowledge any addendum on the bid form will result in bid rejection.

Acknowledge Receipt of Addenda: NUMBER: N/A

NUMBER: ↓

NUMBER: ✓

NUMBER: \_\_\_\_\_

LOUISIANA CONTRACTOR'S LICENSE NO.: (if applicable) N/A

**\*\*\* ALL BIDDERS MUST COMPLETE SECTION BELOW \*\*\***

FIRM NAME:

Industrial Video + Control

SIGNATURE: Jennifer Williams  
(Must be signed here)

TITLE:

Director of Sales

PRINT OR TYPE NAME:

Jennifer Williams

ADDRESS:

105 McDougall Ct.

CITY, STATE:

Greenville, SC

ZIP:

29607

TELEPHONE:

(617) 467-3059 ext. 147

FAX:

(617) 621-4062

EMAIL ADDRESS:

jwilliams@ivcco.com

TOTAL PRICE OF ALL BID ITEMS: \$ 25,353.<sup>00</sup>

DATE: 6/08/2018

Page: 5

## INVITATION TO BID FROM JEFFERSON PARISH - continued

BID NO.: 50-00123294

SEALED BID

ITEM NUMBER	QUANTITY	U/M	DESCRIPTION OF ARTICLES	UNIT PRICE QUOTED	TOTALS
1	3.00	EA	<p>PURCHASE A QUANTITY OF OUTDOOR CAMERA SYSTEM FOR THE JEFFERSON PARISH DEPARTMENT OF EMERGENCY MANAGEMENT</p> <p>0010 - PANASONIC OUTDOOR CAMERA SYSTEM (AW-HE40S) D2CD12V40-2, NETWORK SURVEILLANCE CAMERA, PTZ, OUTDOOR, WEATHERPROOF, COLOR (DAY&amp;NIGHT), 1920 X 1080, MOTORIZED, 1000 TVL, AUDIO HD-SDI-DC 12V, PoE PLUS</p> <p>*MUST BE DELIVERED WITHIN 1 YEAR OF THE PURCHASE ORDER DATE*</p>	<p>\$8,451.<sup>00</sup></p>	<p>\$25,353.<sup>00</sup></p>

Debarment/Suspension Form

DEBARMENT/SUSPENSION CERTIFICATION

Debarment:

Federal Executive Order (E.O.) 12549 "Debarment" requires that all contractors receiving individual awards, using federal funds, and all subrecipients certify that the organization and its principals are not debarred, suspended, proposed for debarment, declared ineligible, or voluntarily excluded by any Federal department or agency from doing business with the Federal Government. By signing this document you certify that your organization and its principals are not debarred. Failure to comply or attempts to edit this language may disqualify your bid. Information on debarment is available at the following websites: [www.sam.gov](http://www.sam.gov) and <https://acquisition.gov/far/index.html> see section 52.209-6.

Your signature certifies that neither you nor your principal is presently debarred, suspended, proposed for debarment, declared ineligible, or voluntarily excluded from participation in this transaction by any federal department or agency.

NORMAN FAST - PRESIDENT  
(Name and Title of bidder's official)

INDUSTRIAL VIDEO + CONTROL CO., LLC  
(Name of bidder/company)

330 NEVADA ST  
(Address)

NEWTON, MA 02460  
(Address)

PHONE 617-467-3059 FAX 617-687-0751

EMAIL nfast@ivcco.com

Norman Fast Signature JUN 14, 2018 Date



---

# Equipment **PROPOSAL**

---

Prepared for

**Bid No. 50-00123294**

Jefferson Parish  
Department of Emergency  
Management

By

**Industrial Video & Control**

**Jennifer Williams**

(617) 467-3059 ext 147

jwilliams@ivcco.com

**Number** AAAQ2641-01

**Date** Jun 13, 2018



ISO 9001 Certified

MADE IN THE  
**USA**

**IVC**  
&  
**INDUSTRIAL  
VIDEO & CONTROL**



Qty	Description	Unit Price	Extended Price
3	<b>Panasonic D2CD12V40-2 Dotworkz Outdoor Enclosure with AW-HE40S Camera, Active Cooling, HD-SDI Output</b>	\$8,451.00	<b>\$25,353.00</b>

The D2CD12V40-2 outdoor camera system houses an AW-HE40S integrated PTZ camera within a a Dotworkz' D2 COOLDOME™ weatherproof enclosure which features Active Cooling, while the camera provides HD-SDI output. Production-quality, remote HD video capture is now possible in virtually any weather environment using this turnkey system that ships complete, and comes ready for immediate installation and deployment.



<b>SubTotal</b>	\$25,353.00
-----------------	-------------

<b>Tax</b>	\$0.00
------------	--------

<b>Shipping</b>	
-----------------	--

<b>Total</b>	<b>\$25,353.00</b>
--------------	--------------------

\*Shipping is FOB DELIVERED.

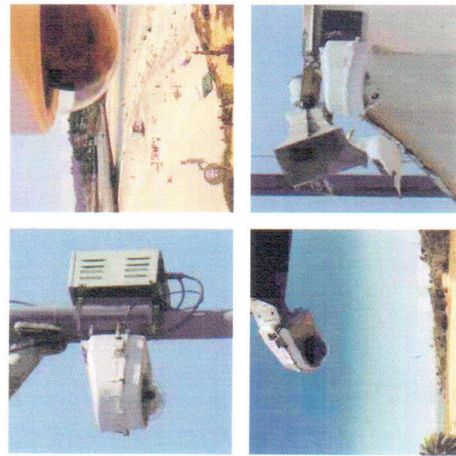




## Built to Stay Cool when the Weather is Beyond Hot

The Dotworkz COOLDOME™ Active Cooling technology offers the most advanced outdoor camera protection system available, and has been designed to protect both IP and Analog cameras from extreme heat and direct sunlight.

The COOLDOME™ is engineered for climates where heat damage can occur. It is IP66 rated: airtight and sealed against outside air, dust, water and salt water, and integrated IP68 waterproof cable ports. Internal mounting space designed for routers, cell networks, hard drives, UPS, WiMax, mesh hardware and more.



innovative

## D2-CD: Dotworkz D2 COOLDOME™ 12VDC Active Cooling Camera Enclosure (IP66)

**IP66**  
OUTDOOR RATED



**12VDC**

\*Camera added for example purposes only

### Features:

- COOLDOME™ Thermostatically controlled Active Cooling technology.
- Up to 167° F (75° C) protection - up to a 45° F (25° C) differential with the outside.
- Compatible with most brands and models of cameras: IP, CCTV, & HD PTZ's, including mini-dome cameras.
- Integrated Dual Layer (Foil/Foam) Internal thermal blanket protects electronics from solar-heat and UV Rays to reduce solar-loading and protects from cold weather conditions, creating a stable internal camera environment.
- Internal bracket included for perfect fit for PTZ, megapixel or mini domes.
- Internal mounting space for: routers, cell networks, NVR, hard drives, UPS, WiMAX, etc.
- IP66 Rated D2 housing with IP68 Cable Glands when properly installed with appropriate power & data cable that meets IP68 transversely sealed cable ratings.

### Description:

The D2 COOLDOME™ is the most advanced outdoor camera protection system available. The COOLDOME™ is designed with an active on-board & thermostatically controlled air conditioning, to protect both cameras and other system related hardware in one easy to install engineered form factor.

Dotworkz D2 COOLDOME™ uses solid state cooling technology which takes protection to the next level for climates where temperatures exceed 105° F (41° C) and reach as high as 167° F (75° C) the COOLDOME™ is the answer. Engineered for climates where heat damage can occur.

### Specs:

Operating Temperature (Absolute/Rec.):

-40° to 167°F (-40°C to 75°C)

30° to 145°F (-1°C to 63°C)

Power Consumption (without camera):

9 amps @ 12 VDC typical at full load

Input Power Source Options:

12 VDC, 110 VAC, or 220 VAC

Output for Camera Power:

12 VDC (24 VDC model available by special order)

Internal Power Available for Camera:

3 amps @ 12 VDC on typical model

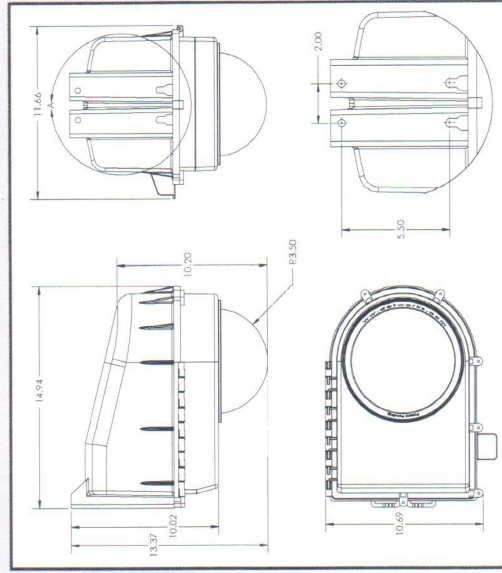
Shipping:

17" x 13" x 16"

15 lbs (6.8 kg)



ITE  
E473074



www.dotworkz.com (866) 575-4689

remote video solutions



# Panasonic

BUSINESS

**AW-HE40SW/SK** [SDI Model]  
**AW-HE40HW/HK** [HDMI Model]  
HD Integrated PTZ Camera

For indoor use



AW-HE40SW/AW-HE40HW

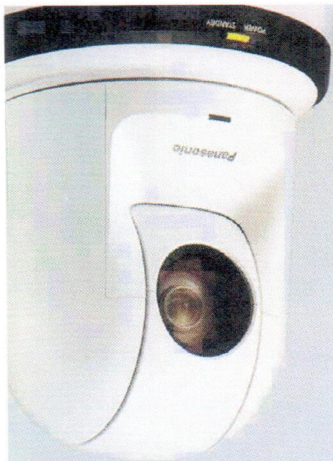
Features 30x optical zoom lens  
and support for PoE+\*  
for outstanding operability  
and installation flexibility



AW-HE40SK/AW-HE40HK

\* Abbreviation of Power over Ethernet Plus.





## Full HD camera with integrated pan-tilt for lectures, meetings and a wide variety of applications.

The AW-HE40 series of integrated full HD cameras performs in a wide variety of onsite shooting applications that require high-quality video, such as conferences, lecture capture and other events, thanks to its high-performance zoom, wide angle of view and outstanding color reproducibility. In addition to IP video transmission, support for PoE+\*1 enables power to be supplied via a LAN cable\*2. The result is installation flexibility. It also supports HD-IP video output, output of video and audio via USB, and SD card recording.

### Developed 1/2.3-type MOS Sensor

Equipped with a developed 1/2.3-type MOS sensor and DSP (Digital Signal Processor) for high sensitivity and high resolution.

### High Performance Optical 30x Zoom Lens/ Super Resolution 40x Zoom

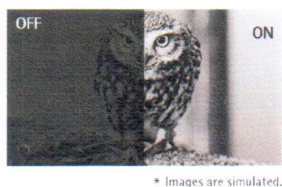
In addition to a 30x optical zoom, the AW-HE40 series can zoom up to 40x while maintaining high resolution thanks to Super Resolution technology. It also features a 16x digital zoom\*3 and a 1.4x digital extender, which enables the AW-HE40 series to shoot in large conference halls and classrooms.



### Night Mode (supports automatic switching)

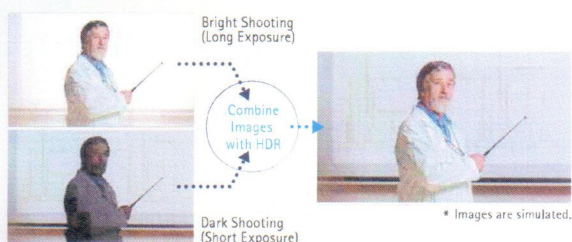
Switching to Night Mode makes shooting possible even in low light conditions in which shooting is normally difficult, such as when observing wildlife\*4.

The AW-HE40 series can also be set to switch to the mode automatically depending on surrounding light levels.



### Equipped with High Dynamic Range (HDR) Mode

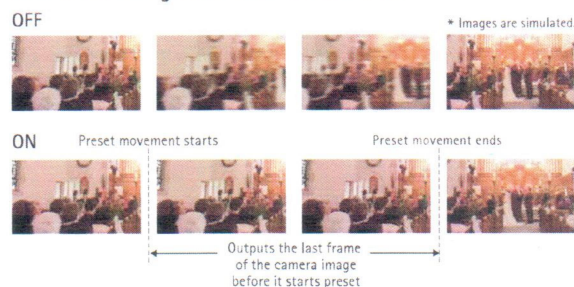
In addition to conventional Dynamic Range Stretch (DRS) and Digital Noise Reduction (DNR), the AW-HE40 series are newly equipped with High Dynamic Range (HDR) mode. When shooting and synthesizing two images with differing exposure times, the AW-HE40 series can create video with high visibility that corrects for halation and black defects even under backlit conditions.



### Outputs Still Image During Preset Movements; Supports One-Camera Operations

The new Freeze During Preset function enables to freeze the video during preset playback. The immediately preceding still image is output during preset movements so that the swiveling movement is not displayed, making operations possible with one camera.

#### With Freeze During Preset function OFF and ON



### Either SDI Model or HDMI Model Can Be Selected To Match Usage Needs

Supports 1080/59.94p (HDMI model only), 29.97p\*5, 59.94i, 29.97PsF, 1080/50p (HDMI model only), 25p\*5, 50i, 25PsF, 720/59.94p, and 50p video formats. Flexible operation in line with the application is made possible by a lineup that includes an SDI output model (AW-HE40SW/SK), optimal for video content production, and an HDMI output model (AW-HE40HW/HK), optimal for video streaming, both of which come in two body colors (white and black) that can be selected depending on the usage environment.

### Video/Audio Output with USB

USB Video Class and USB Audio Class are supported. This enables video and audio output via USB so the cameras can be used as high-image-quality Web cameras for Web conferencing, distance learning, and other applications utilizing communication software.

### Audio Input Function

The AW-HE40 series also supports audio input, embedding and encoding.

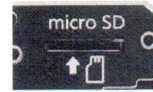
Audio output to IP is also supported. The ALC (Audio Automatic Level Control) in the original AW-HE40 series can be switched ON/OFF and an equalizer function can be used. By reducing low-frequency sound from air conditioners, projectors, and other devices, it is possible to emphasize and increase the clarity of the spoken words.

\*1: Abbreviation of Power over Ethernet Plus. \*2: The software for the AW-HE40 series may need to be updated depending on the existing software version. For details, see the Panasonic website (<https://pro-av.panasonic.net/>). \*3: Picture quality is lower with the digital zoom. \*4: Video output is monochrome. \*5: Native output.



## microSD Card Recording Function

MicroSD card recording is supported. Camera video and audio can be recorded in MP4 format on microSD card (sold separately) inserted into the unit. In addition, using an IP network, it is possible to externally control recording start/stop and download the recorded files.



## Full HD Video Output Via IP Transmission

In addition to HD-SDI and HDMI output, production quality full HD video output via IP transmission is supported. The camera delivers up to four channels of IP streaming video (H.264), with a maximum quality level of 1080/60p at 24 Mbps<sup>\*1</sup>. Simultaneous transmission to as many as 14 devices is also supported<sup>\*2</sup>. Flexible system setup is possible to meet various application needs.



List of Supported Multi-Streaming Outputs (When IP output priority is selected<sup>3</sup>)

Settings	H.264		JPEG	
	CH1	CH2 <sup>*5</sup>	CH3 <sup>*3</sup> /CH4 <sup>*4</sup>	CH1/CH2/CH3
Resolution	1920x1080 1280x720 <sup>*3</sup> 640x360 <sup>*6</sup>	1280x720 640x360 320x180	1280x720 640x360 320x180	1920x1080 <sup>*4</sup> 1280x720 <sup>*5</sup> 640x360 320x180 <sup>*5</sup>
Frame rate	59.94 Hz 50 Hz	60 fps/30 fps/15 fps/5 fps 50 fps/25 fps/12.5 fps/5 fps	30 fps/15 fps/5 fps 25 fps/12.5 fps/5 fps	30 fps/15 fps/5 fps 25 fps/12.5 fps/5 fps
Bit rate	Up to 24 Mbps			
Voice transmission	Yes (AAC48 kHz)			
PoE+	Yes			

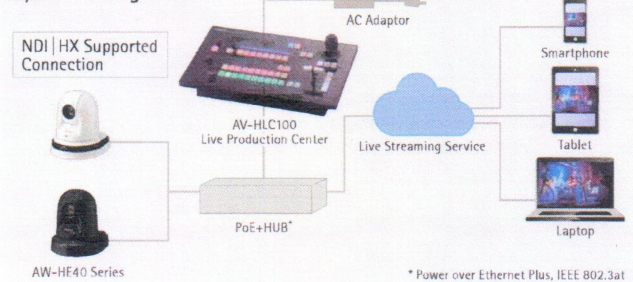
\* Depending on the output mode, certain restrictions apply.

## NDI|HX Compatibility for Excellent Video Streaming Quality

The AW-HE40 series can be upgraded to an NDI|HX compatible model if purchasing a license from the NewTek website ([https://pro-av.panasonic.net/en/ndihx\\_support/index.html](https://pro-av.panasonic.net/en/ndihx_support/index.html)). Highly efficient NDI|HX compatibility enables excellent broadcast streaming by encoding and transmitting high-quality video in real time. This technology eliminates the need for IP decoders, allowing input to be sent directly to the switcher.

\* Contact your local Panasonic vendor for further information.

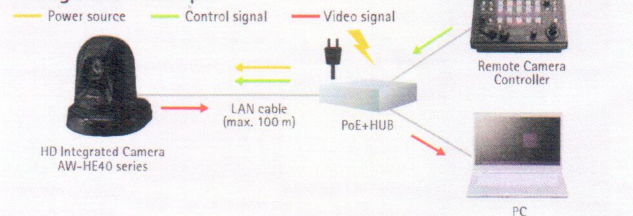
### System Configuration



## Supporting PoE+<sup>\*6</sup> for Lower Installation Costs

By connecting network devices that support the IEEE802.3at PoE+ standard, power can be supplied via LAN cable. Since it is not necessary to install a power supply or even a local AC outlet, installation costs can be significantly reduced.

### Configuration Example

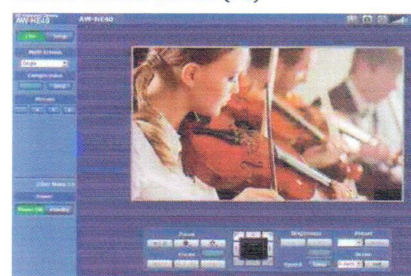


## IP Control with Image Monitoring Using PC, Mac and Mobile Terminals

Using an IP browser, the camera can be controlled from a remote location, and IP video monitoring and remote camera control can be performed from a PC, Mac or mobile terminal such as an iPhone, iPad or Android device, enabling easy operations. IP video<sup>\*7</sup> can be transmitted to up to 14 terminals<sup>\*1</sup>.

\* For the latest information on supported OS/browsers, please refer to the "service and support" section on the Panasonic website (<https://pro-av.panasonic.net/>).

### Camera Control Screen (PC)



Live Screen

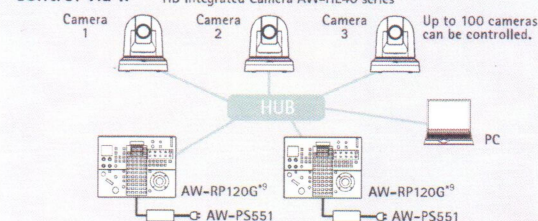
### Mobile Terminal Screen



## Flexible IP Control Architecture Simplifies System Design and Operation<sup>\*8</sup>

Up to 100 x AW-HE40 series cameras can be controlled via IP from a single AW-RP120G/RP50 or PC. An AW-HE40 series can also be simultaneously controlled by up to five AW-RP120G/RP50 controllers via IP.

### Control via IP



\*1: 1920 x 1080 60 fps output is 1ch display only. For 2ch or more, display is max. 30 fps. Also, JPEG output is up to 3ch. \*2: Depends on your network environment. \*3: Settable when HDR is "Off".

\*4: Settable when HDR is set to "Off" and the frame rate is other than 60fps (or 60fps). \*5: Not settable when -DR is "Off". \*6: Abbreviation of Power over Ethernet Plus.

\*7: Supports only SD video output. \*8: Controller upgrade required. For details, please refer to the "service and support" section on the Panasonic website (<https://pro-av.panasonic.net/>).

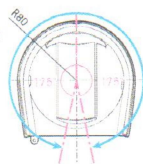
\*9: AC adaptor AW-PS551 (sold separately) is required for AW-RP120G.



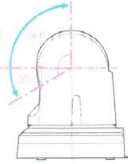
## Exceptional Pan-tilt Performance for Smooth Shooting Over a Wide Area\*1

The pan range of  $\pm 175^\circ$  and the tilt range of  $-30^\circ$  to  $+90^\circ$  cover a wide shooting area\*1. Pan and tilt operate at a maximum speed of  $90^\circ/\text{second}$  and respond quickly to remote control operation. They operate quietly at a sound level of NC35 or lower.

As seen  
from above



As seen  
from the side

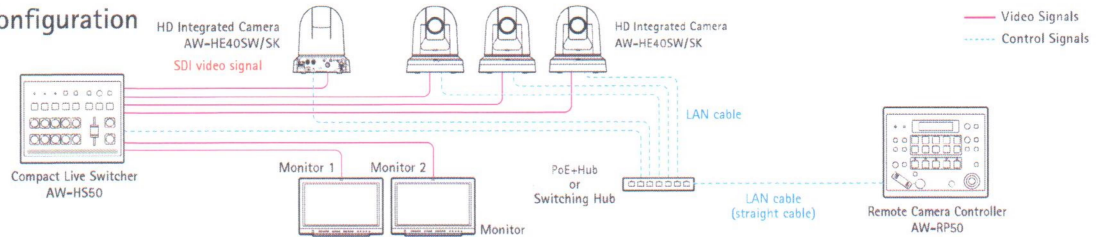


\*1. Depending on the position of the pan and tilt, the unit itself may be reflected in the image.

## Other Functions

- Preset memory up to 100 positions.
- Functions such as freeze during preset, digital extender zoom and color temperature settings can be assigned to the user buttons on Panasonic controllers.
- Equipped with RS422 remote terminal; up to five units can be controlled via serial control from a controller.
- Equipped with RS232C remote terminal (standard serial communication support). Up to seven units can be controlled via daisy chain connection.
- Up to four units can be operated with a wireless remote controller (AW-RM50G sold separately).
- Easy installation thanks to use of turn-lock mechanism.

## System Configuration Example



\*The AC adaptor provided with the unit is not shown in the above figure. \*SDI output supported only by AW-HE40SW/SK.  
\*The camera unit automatically recognizes straight cables and cross cables connected to the LAN terminal.

## Optional Software

### Supporting Lecture Capture with Auto Tracking function

Auto Tracking Software Key

**AW-SF100/AW-SF200**

2 Additional Licenses AW-SF202

3 Additional Licenses AW-SF203

A 30-day Free Trial is Available



Camera View Screen



Settings-PTZ Ctrl Screen

### (Main Features)

- "Motion detection" system using video streaming from camera achieves smooth auto tracking regardless of the person is facing.
- GUI designed for intuitive operation.
- Using IP-based software to support installation/operation of camera in classroom in remote location.
- Selectable as a Web application for flexible installation and operation, enabling control from a tablet, smartphone, desktop PC, etc.
- Easy to set up software installed on a PC by connecting AW-HE40 series. Installation of sensors and other devices are not necessary.

\*This refers to the standalone version. In case the Web application version is used, the Auto Tracking Software is installed on an HTTP server and used from there.

\*Depending on the usage conditions, there may be errors in detection of tracking subjects or proper tracking. Please use this software in an environment in which corrections can be made by an operator.

\*There is a 30-day free trial available for Auto Tracking Software. Please purchase this "Auto Tracking Software Activation Key" after checking precautions and confirming that this will work in your environment during this free trial period. When purchasing optional software please refer to the Panasonic website <<https://pro-av.panasonic.net/>> "Software Download".

### PTZ Control Center

Free Software

- Intuitive GUI with the capability to control multiple cameras.
- Image quality adjustment and pan-tilt-zoom control on a GUI.
- Easy to recall presets by clicking preset buttons with thumbnails.



Main View

### PTZ Virtual USB Driver

Free Software

- High quality video perfect for web conferencing, utilizing a PTZ camera on the network as a USB camera.
- Automatic detection of connected cameras, and network settings supported.

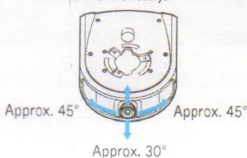
\* For further information on the optional software, please see "Software Download" on the Panasonic website <<https://pro-av.panasonic.net/>>.

## Easy Wireless Control Using an iPad\*2 with a Control Assist Camera\*3



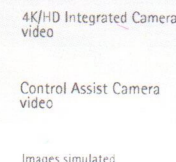
Control Assist Camera  
**AW-HEA10W**

■ Range of lens movement  
This is adjustable  $30^\circ$  vertically and  $45^\circ$  horizontally.



Control Assist Camera  
**AW-HEA10K**

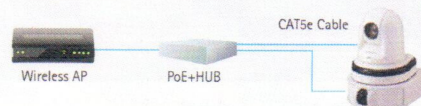
■ Usage example



- Used in combination with a 4K/HD Integrated Camera\*3.
- $95^\circ$  wide-angle view from the Control Assist Camera is displayed on an iPad.
- Tapping the desired area of the wide-angle view displayed on the iPad\*2 turns the field of view of the 4K/HD Integrated Camera\*3 to the tapped position.

\*2: An iPad (sold separately) and a wireless AP (sold separately) are required. Please install the iPad application "PTZ Cntrl" (free). For details, please visit Panasonic AW-HEA10W/K website ([https://pro-av.panasonic.net/en/sales\\_of/camera/aw-hea10/](https://pro-av.panasonic.net/en/sales_of/camera/aw-hea10/)).

\*3: AW-HE130/HN130 series, AW-UE70/JN70 series, AW-HE40/HN40 series, and AW-HE38/JN38 series only.



The iPad application "PTZ Cntrl" can be downloaded for free from the App Store. This application enables control of pan, tilt, zoom, focus, iris and gain. For details, please visit the Panasonic AW-HEA10W/K product site ([https://pro-av.panasonic.net/en/sales\\_of/camera/aw-hea10/](https://pro-av.panasonic.net/en/sales_of/camera/aw-hea10/)).





# Specifications

As of April, 2018

GENERAL	Power requirements	DC 12 V (Supplied AC adaptor) DC 42 V to 57 V (PoE+ power supply)	FUNCTIONS AND PERFORMANCE	Chroma amount variability	±3 step
	Current consumption	1.2 A (Supplied AC adaptor) 0.4 A (PoE+ power supply)		Scene file	Full Auto, Manual1, Manual2, Manual3
	Ambient operating temperature	0 °C to 40 °C (32 °F to 104 °F)		Output format	HD 1080:59.94p/50p*4 1080:59.94i/50i 1080:29.97p/25p 1080:29.97p/25p*4 720:59.94p/50p
	Storage temperature	-20 °C to 50 °C (-4 °F to 122 °F)		Synchronization system	Internal synchronization
	Allowable humidity ranges	20 % to 90 % (no condensation)		[USB connection]	* This may vary depending on the operating environment.
	Mass	Approx. 1.5 kg (3.30 lb)		Video output	USB Video Class Ver1.0
	Dimensions (W x H x D)	160 mm x 186 mm x 166 mm (6-5/16 inches x 7-41/128 inches x 6-17/32 inches) [excluding protrusions, direct ceiling mount bracket]		Video compression format	Motion JPEG
	Finish	[AW-HE40HW/P], [AW-HE40SW/P], [AW-HE40HWE/J], [AW-HE40SWE/J], Pearl white [AW-HE40HKE/J], [AW-HE40SKE/J], [AW-HE40HKE/J], [AW-HE40SKE/J], Metallic black		Resolution	1920 x 1080, 1280 x 720, 640 x 360
INPUT	Controller supported*1	AW-RP120G, AW-RP50, AK-HSP200G, AK-HRP1000G, AK-HRP1005G	FUNCTIONS AND PERFORMANCE	Frame rate	max 30 fps (System frequency 59.94 Hz) max 25 fps (System frequency 50 Hz)
	Power	DC 12 V IN, PoE+ (IEEE802.3at standard)		Audio output	USB Audio Class Ver1.0
	Mic/line input	Stereo mini-jack (ø3.5 mm) Input impedance: Approx. 2 kΩ (unbalanced) [Mic input] Supported microphones: Stereo mic (plug-in power, on/off switching via menu) Supplied voltage: 2.5 V ± 0.5 V Mic input level: -60 dBV ± 3 dBV [Line input] Input level: -10 dBV ± 3 dBV		Audio compression format	Linear PCM, 48 kHz, 16-bit, 2 channels
OUTPUT	Video output	HDMI * HDCP is not supported. * VIERA Link is not supported. HD SDI OUT [AW-HE40SW/SK] Compliant with the SMPTE292M standards/75 Ω(BNC x 1)		Supported models	Devices standardly equipped with a USB 2.0 compatible port
	LAN	LAN connector for IP control (RJ-45) Equipped with straight/crossover cable auto detection function		[Pan-tilt head unit]	
INPUT/ OUTPUT	Input/ Output connector	RS-232C Mini DIN 8-pin (IN) Mini DIN 8-pin (OUT) RS-422 CONTROL IN RS422A (RJ-45) USB Mini-B port SD card microSD card slot		Installation method	Stand-alone (Desktop) or suspended (Hanging)*5
				Pan/tilt operation speed	Maximum speed during preset: 300°/s Maximum speed during manual: 90°/s
				Panning range	±175°
FUNCTIONS AND PERFORMANCE	[Camera unit]			Tilting range	-30° to 90°*6
	Imaging sensors	1/2.3-type MOS		Quietness	During preset: NC40 or less During manual: NC35 or less
	Lens	Motorized 30x zoom, F1.6 to F4.7 [F=4.3 mm (11/64 inches) to 129 mm (5-1/8 inches); 35 mm (1-3/8 inches) equivalent: 31.6 mm (1-31/128 inches) to 962.0 mm (37-7/8 inches)]		[Camera/pan-tilt head control]	
	Focus	Switching between auto and manual		IP connecting cable	When connecting through a hub: LAN cable*7 (category 5 or above), max. 100 m (328 ft) When using a PoE+ hub: LAN cable*7 (category 5 or above), max. 100 m (328 ft) When a hub is not used: LAN cable*7 (category 5 or above), max. 100 m (328 ft)
	Focus distance	Entire zooming range 1.2 m (3.94 ft) Wide end: 10 cm (0.33 ft)		AW protocol connecting cable	LAN cable*7 (category 5 or above, straight cable), max. 1000 m (3280 ft)
	Color separation optical system	On-chip color filter system		Standard protocol connecting cable	Mini DIN 8-pin cable, male
	Minimum illumination	59.94 Hz 0.7 lx (50 IRE, F1.6, 48 dB, 1/60 without accumulation) 0.35 lx (50 IRE, F1.6, 48 dB, 1/30 with accumulation) [Frame Mix 6 dB] 50 Hz 0.7 lx (50 IRE, F1.6, 48 dB, 1/50 without accumulation) 0.35 lx (50 IRE, F1.6, 48 dB, 1/25 with accumulation) [Frame Mix 6 dB]		[SD card recording]	
	Horizontal resolution	1000 TV lines Typ (Center area)		SD card type	micro SDHC (4 GB to 32 GB), micro SDXC (64 GB to 128 GB) Speed class 10 or higher
	Gain selection*2	Auto, 0 dB to 48 dB (2 dB step)		System frequency	59.94 Hz/50 Hz
	Frame mix*3	Auto, Off, 6 dB, 12 dB, 18 dB, 24 dB		Video compression format	MPEG-4 AVC/H.264 High Profile
ACCESSORIES	Electronic shutter speed	During Full Auto 1/30 to 1/2000 [50.94 Hz] 1/25 to 1/2000 [50 Hz] During Auto 1/60 to 1/2000 [59.94 Hz] 1/50 to 1/2000 [50 Hz] During Manual 1/100, 1/250, 1/500, 1/1000, 1/2000, 1/4000, 1/10000 [59.94 Hz] 1/120, 1/250, 1/500, 1/1000, 1/2000, 1/4000, 1/10000 [50 Hz]		Audio compression format	AAC-LC (48 kHz, 16 bit, 2 ch, 128 kbps)
	Synchro scan	59.94 Hz : 59.94 Hz to 660.09 Hz 50 Hz : 50.00 Hz to 570.12 Hz		SD card recording	MPEG-4 AVC file standard compliant (MP4)
	Gamma	Off, Normal (Low, Mid, High), Cinema		Recording format	1920 x 1080/59.94p, 1920 x 1080/50p, 1920 x 1080/29.97p, 1920 x 1080/25p, 1280 x 720/59.94p, 1280 x 720/50p, 1280 x 720/29.97p, 1280 x 720/25p
	White balance	AWB A, AWB B, ATW, 3200K, 5600K, VAR (2400K to 9900K)		[Network]	
				Resolution	JPEG VGA (640 x 360), QVGA (320 x 180) max.30 fps 1920 x 1080, 1280 x 720, 640 x 360, 320 x 180 max.30 fps H.264 1920 x 1080, 1280 x 720, 640 x 360, 320 x 180 max.60 fps
				Supported protocol	IPv4 TCP/IP, UDP/IP, HTTP, HTTPS, RTSP, RTP, RTP/RTCP, FTP, DHCP, DNS, NTP, IGMP, iPP, ICMP, ARP, RTPSPoverTCP, RTSPoverHTTP, SSL(TLS), MultiCast/UniCast IPv6 TCP/IP, UDP/IP, HTTP, HTTPS, RTSP, RTP, RTP/RTCP, FTP, DHCPv6, DNS, NTP, ICMPv6(MLD), RTSPoverTCP, RTSPoverHTTP, SSL/TLS, MultiCast/UniCast
				i-OS, Android support	JPEG image display
					Mount bracket for installation surface (Hanging*8 / Desktop) 1 Drop-prevention wire (already attached to the unit): 1 Bracket mounting screws (bind-head) M4 x 10 mm: 4 Main unit mounting screw (with flat washer, spring washer) M3 x 6 mm: 1 Power cable (1.5 m [4.92 ft]): 1 AC adaptor: 1 CD-ROM: 1

\* 1: It may be necessary to upgrade the version of the controller so that the controller will support the unit. \* 2: During Auto, 6 dB to 48 dB (6 dB step) are available for AGC Max Gain setting.  
\* 3: During Auto, 0 dB, 6 dB, 12 dB and 18 dB are available for Auto F.Mix Max Gain setting. \* 4: AW-HE40HW/HK only \* 5: To ensure safety, the unit must be secured using the mount bracket supplied.  
\* 6: Depending on the pan or tilt position, the camera may be reflected in the image. \* 7: Use of an STP (shielded twisted pair) cable is recommended.  
\* 8: To ensure more safety, AW-HE40 series can be secured by using the direct ceiling mount bracket (WV-Q105A).

## Required personal computer environment

As of April, 2018

CPU	When using 1080/60p [59.94 Hz] and 1080/50p [50 Hz] Intel® Core™ i7 3.4 GHz or higher recommended Other than above Intel® Core™ i7 2.4 GHz or higher recommended
Memory	For Windows 1 GB or higher (2 GB or higher for Microsoft® Windows® 8.1, Microsoft® Windows® 8, Microsoft® Windows® 7 64-bit edition) For Mac 2 GB or more
Network function	10BASE-T or 100BASE-TX port x 1
Image display function	Resolution: 1024 x 768 pixels or more Color generation: True Color 24-bit or more
Supported operating system and Web browser	Windows Microsoft® Windows® 8.1 Pro 64-bit/32-bit*9, Windows® Internet Explorer® 11.0*10 Microsoft® Windows® 8 Pro 64-bit/32-bit*9, Windows® Internet Explorer® 10.0*10 Microsoft® Windows® 7 Professional SP1 64-bit/32-bit*10, Windows® Internet Explorer® 8.0 / 9.0 / 10.0 / 11.0*11 Mac OS X 10.8 Safari 6.2 / OS X 10.9 Safari 7.1 / OS X 10.10 Safari 8.0 iPhone / iPad / iPod touch iOS 8.3 Standard browser Android Android OS 4.4 Standard browser
Other	CD-ROM drive (for using the Operating Instructions and various software) Adobe® Reader® (for viewing the Operating Instructions on the CD-ROM)

\* 9: Use the desktop version of Internet Explorer. (Internet Explorer for Windows UI is not supported.) \* 10: Windows® XP compatibility mode is not supported.  
\* 11: The 64-bit version of Internet Explorer® is not supported.

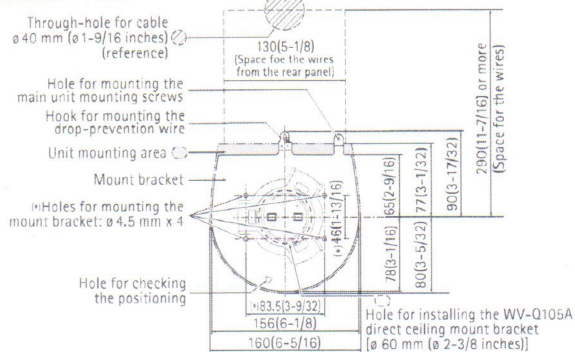
For the latest information on supported OS/browser, please refer to the "service and support" on the Panasonic website (<https://pro-av.panasonic.net>).

●Microsoft®, Windows®, Windows® 7, Windows® 8, Windows® 8.1 and Internet Explorer® are either registered trademarks or trademarks of Microsoft Corporation in the United States and other countries.  
●Apple, Mac, OS X, iPhone, iPod Touch, iPad, and Safari are registered trademarks of Apple Inc., in the United States and other countries.  
●Android™ is a trademark of Google Inc.

## AW-HE40SW/SK



## Unit: mm(inches)



The front panel of the unit on this side.

## As of April, 2018

<p>Live Production Center AV-HLC100</p> 	<p>Control Assist Camera AW-HEA10W/K</p> 	<p>Remote Camera Controller AW-RP50</p> 
	<p>Remote Camera Controller AW-RP120G (AC adaptor (DC12 V) is required separately.)</p> 	<p>Remote Operation Panel AK-HRP200G (AC adaptor (DC12 V) is required separately.)</p> 
<p>Wireless Remote Control AW-RM50G (“AA”, “R6” or “LR6” battery x 2 are not included.)</p> 	<p>Compact Live Switcher AW-HS50</p> 	<p>Direct Ceiling Mount Bracket WV-Q105A</p> 

For more information, please visit Panasonic web site



<https://pro-av.panasonic.net/>

\* Specifications are subject to change without notice.

# Panasonic®

Panasonic Corporation  
Connected Solutions Company

2-15 Matsuba-cho, Kadoma, Osaka 571-8503 Japan  
<https://pro-av.panasonic.net/>

[Countries and Regions]

Argentina	+54 11 4122 7200
Brazil	+55 (0) 2 9491 7400
Brazil	+55 11 3880 4035
Canada	+1 905 624 5010
China	+86 10 6515 8828
Hong Kong	+852 2313 0888
Czech Republic	+421 (0) 903 447 757
Denmark	+45 43 20 08 57
Egypt	+20 2 23938151
Finland, Latvia, Lithuania, Estonia	+358 (9) 521 52 53
France	+33 (0) 1 47 91 64 00
Germany, Austria, Switzerland	+49 (0) 6103 31387
Greece	+30 210 96 92 300
Hungary	+36 (1) 382 60 60
India	+91 1880 425 1860
Indonesia	+65 6227 7284
Iran	
Israel	+98 21 2271463
(Panasonic Office)	+98 2188791102
Italy	+39 02 6788 367
Jordan	+962 6 5859801
Kazakhstan	+7 727 298 0891
Korea	+82 2 2106 6641

Kuwait +96 522431385  
Lebanon +96 11665557  
Malaysia +80 3 7809 7888  
          +85 55 5488 1000  
Mongolia +976 70115577  
Netherlands, Belgium  
          +31 73 640 2729  
New Zealand +64 9 272 0100  
Norway +47 67 91 78 00  
Pakistan +92 21 111 567 111  
Palestine +972 2 988750  
Panama +507 229 2955  
Philippines +65 6277 7284  
Poland +48 (22) 338 1100  
Portugal +351 21 425 77 04  
Romania, Albania, Bulgaria, Macedonia  
          +40 (0) 729 164 387  
Russia & CIS +7 495 9804206  
Saudi Arabia +966 (1) 4700499  
Singapore +65 6277 7284  
Slovak Republic, Croatia, Serbia, Bosnia,  
Montenegro, Slovenia  
          +421 (0) 903 447 757  
South Africa +27 11 3131622  
Spain +34 (93) 425 93 00

Sweden +46 (8) 680 26 41  
Taiwan +886 2 2227 6214  
Thailand +662 731 8888  
Turkey +90 216 578 3700  
U.A.E. (for All Middle East)  
+971 4 8862142  
Ukraine +380 44 4903437  
U.K. +44(0)1344 70 69 13  
U.S.A. +1 877 803 8492  
Vietnam +65 6277 7284



Factories of AVC Networks Company have received ISO14001:2004-the Environmental Management System certification. (Except for 3rd party's peripherals.)

SP-HE40PE5

5K201804UP-1 Printed in Japan