

DATE: 1/4/2023

Page: 6

BID NO.: 50-00140805

BID FORM
Non Public Works

All Public Work Projects are required to use the Louisiana Uniform Public Work Bid Form

All prices must be held firm unless an escalation provision is requested in this bid. Jefferson Parish will allow one escalation during the term of the contract, which may not exceed the U.S. Bureau of Labor Statistics National Index for all Urban Consumers, unadjusted 12 month figure. The most recently published figure issued at the time an adjustment is requested will be used. A request must be made in writing by the vendor, and the escalation will only be applied to purchases made after the request is made.

Are you requesting an escalation provision?

YES _____ NO X
MAXIMUM ESCALATION PERCENTAGE REQUESTED 0 %

INITIAL BID PRICES WILL REMAIN FIRM THROUGH THE DATE OF JAN. 31, 2025

For the purposes of comparison of bids when an escalation provision is requested, Jefferson Parish will apply the maximum escalation percentage quoted by the bidder to the period to which it is applied in the bid. The initial price and the escalation will be used to calculate the total bid price. It will be assumed, for comparison of prices only, that an equal amount of material or labor is purchased each month throughout the entire contract.

DELIVERY: FOB JEFFERSON PARISH

INDICATE DELIVERY DATE ON EQUIPMENT AND SUPPLIES

N/A

LOUISIANA CONTRACTOR'S LICENSE NO.: (if applicable)

N/A

THIS SECTION MUST BE COMPLETED BY BIDDER:

FIRM NAME: CARLO DITTA, LLC

ADDRESS: 1445 MAC ARTHUR AVE

HARVEY, LA

CITY, STATE: _____ ZIP: 70058

TELEPHONE: 504) 347-0272 FAX: (504) 347-3787

EMAIL ADDRESS: NDCIACCIO@CARLODITTALLC.COM

In the event that addenda are issued with this bid, bidders MUST acknowledge all addenda on the bid form. Bidder must acknowledge receipt of an addendum on the bid form by placing the addendum number as indicated. Failure to acknowledge any addendum on the bid form will result in bid rejection.

Acknowledge Receipt of Addenda: NUMBER: _____

NUMBER: _____

NUMBER: _____

NUMBER: _____

TOTAL PRICE OF ALL BID ITEMS: \$ 280,916.75

AUTHORIZED
SIGNATURE:

Nicole Ditta Ciaccio
Vice-President

Nicole Ditta Ciaccio
Printed Name

TITLE:

SIGNING INDICATES YOU HAVE READ AND COMPLY WITH THE INSTRUCTIONS AND CONDITIONS.

NOTE: All bids should be returned with the BID NUMBER and BID OPENING DATE indicated on the outside of the envelope submitted to the Purchasing Department.

INVITATION TO BID FROM JEFFERSON PARISH - continued

BID NO.: 50-00140805

SEALED BID

ITEM NUMBER	QUANTITY	U/M	DESCRIPTION OF ARTICLES	UNIT PRICE QUOTED	TOTALS
1	15.00	CUYD	<p>Two (2) Year Contract to Provide Ready-Mix Concrete for the Jefferson Parish Public Works Department of Streets and All Jefferson Parish Agencies and Municipalities</p> <p>0010 28 DAY/4000 PSI PORTLAND CEMENT CONCRETE</p> <p>PARISH PICK-UP FROM PLANT LOCATION WESTBANK (EXCLUDING GRAND ISLE)</p> <p>*****NOTE***** ***** IF THE PARISH ALLOWS FOR A SUBSTITUTION OF FLY-ASH FOR CEMENT, THEN LINE ITEMS 0120 THROUGH 0150 WILL BE UTILIZED. THESE ITEMS WILL REFLECT A CREDIT TO THE PARISH PER CUBIC YARD OF CONCRETE PURCHASED BASED ON THE PERCENTAGE OF CEMENT REPLACED WITH FLY-ASH. THESE UNIT PRICES MUST BE A NEGATIVE AMOUNT TO REFLECT A CREDIT TO THE PARISH. IF THIS UNIT COST IS NOT NEGATIVE, THEN THERE IS NO BENEFIT TO THE PARISH TO REDUCE THE CEMENT WITH FLY-ASH.</p>	\$ 142.35	\$ 2135.25
2	12.00	CUYD	<p>0020 28 DAY/4000 PSI PORTLAND CEMENT CONCRETE</p> <p>VENDOR'S OWN DELIVERY MINIMUM: EIGHT (8) CUBIC YARDS PER ORDER. WESTBANK (EXCLUDING GRAND ISLE)</p>	\$147.00	\$ 1764.00
3	15.00	EA	<p>0030 ADDED DELIVERY CHARGES FOR PORTLAND CEMENT CONCRETE ORDERS LESS THAN 8 CU. YD. (MINIMUM 2 CU. YD.) SEE NOTE 12 WESTBANK (EXCLUDING GRAND ISLE)</p>	\$200.00	\$3000.00
4	10.00	CUYD	<p>0040 24 HR/4000 PSI PORTLAND CEMENT CONCRETE WITH SUPERPLASTICIZER ADMIXTURE</p> <p>NO CALCIUM CHLORIDE. COST PER CUBIC YARD PARISH PICK-UP FROM PLANT LOCATION WESTBANK (EXCLUDING GRAND ISLE)</p>	\$ 168.00	\$ 1680.00
5	10.00	CUYD	<p>0050 24 HR/4000 PSI PORTLAND CEMENT CONCRETE WITH SUPERPLASTICIZER ADMIXTURE</p> <p>NO CALCIUM CHLORIDE. COST PER CUBIC YARD VENDOR'S OWN DELIVERY.</p>	\$ 194.75	\$ 1947.50

DATE: 1/4/2023

INVITATION TO BID FROM JEFFERSON PARISH - continued

Page 8

BID NO.: 50-00140805

SEALED BID

ITEM NUMBER	QUANTITY	U/M	DESCRIPTION OF ARTICLES	UNIT PRICE QUOTED	TOTALS
6	1,500.00	CUYD	WESTBANK (EXCLUDING GRAND ISLE) 0060 72 HR/4000 PSI PORTLAND CEMENT CONCRETE WITH SUPERPLASTICIZER ADMIXTURE NO CALCIUM CHLORIDE. COST PER CUBIC YARD PARISH PICK-UP FROM PLANT LOCATION. WESTBANK (EXCLUDING GRAND ISLE)	\$ 147.00	\$ 220,500.00
7	300.00	CUYD	0070 72 HR/4000 PSI PORTLAND CEMENT CONCRETE WITH SUPERPLASTICIZER ADMIXTURE NO CALCIUM CHLORIDE. COST PER CUBIC YARD VENDOR'S OWN DELIVERY. WESTBANK (EXCLUDING GRAND ISLE)	\$ 163.35	\$ 49,005.00
8	25.00	CUYD	0080 ADDITIONAL COST: SET RETARDING ADMIXTURE (QUANTITY FOR 1 CUBIC YARD) WESTBANK (EXCLUDING GRAND ISLE)	\$ 3.00	\$ 75.00
9	20.00	CUYD	0090 ADDITIONAL COST: NON-CORROSIVE, NON-CHLORIDE SET ACCELERATOR ADMIXTURE (QUANTITY FOR 1 CUBIC YARD) WESTBANK (EXCLUDING GRAND ISLE)	\$ 10.00	\$ 200.00
10	5.00	CUYD	0100 ADDITIONAL COST: FOR TEMPERATURE CONTROL: ADD ICE (QUANTITY FOR 1 CUBIC YARD) WESTBANK (EXCLUDING GRAND ISLE)	\$ 20.00	\$ 100.00
11	70.00	MIN	0110 ADDITIONAL COST FOR STAND-BY, OR OR UNLOADING TIME, PER MINUTE, IN EXCESS OF THE NORMAL THIRTY (30) MINUTES ALLOWANCE. WESTBANK (EXCLUDING GRAND ISLE)	\$ 1.00	\$ 70.00
12	80.00	CUYD	0120 REDUCTION IN COST FLY ASH/CEMENT/ CONCRETE (SEE NOTE 1 OF SPECIFICATIONS, 0.01% TO 5.0% REDUCTION OF CEMENT) WESTBANK (EXCLUDING GRAND ISLE) ***THERE WAS \$0.00 ENTERED FOR THIS LINE ITEM**	\$.90	\$ 72.00
13	80.00	CUYD	0130 REDUCTION IN COST FLY ASH/CEMENT/ CONCRETE (SEE NOTE 1 OF SPECIFICATIONS, 5.01% TO 10.0% REDUCTION OF CEMENT)	\$ 1.15	\$ 92.00

DATE: 1/4/2023

INVITATION TO BID FROM JEFFERSON PARISH - continued

Page 9

BID NO.: 50-00140805

SEALED BID

ITEM NUMBER	QUANTITY	U/M	DESCRIPTION OF ARTICLES	UNIT PRICE QUOTED	TOTALS
14	80.00	CUYD	WESTBANK (EXCLUDING OF GRAND ISLE) 0140 REDUCTION IN COST FLY ASH/CEMENT/ CONCRETE (SEE NOTE 1 OF SPECIFICATIONS, 10.01% TO 15.0% REDUCTION OF CEMENT) WESTBANK (EXCLUDING OF GRAND ISLE)	\$ 1.50	\$ 120.00
15	80.00	CUYD	0150 REDUCTION IN COST FLY ASH/CEMENT/ CONCRETE (SEE NOTE 1 OF SPECIFICATIONS, 15.01 TO 20.0% REDUCTION OF CEMENT) WESTBANK (EXCLUDING GRAND ISLE)	\$ 1.95	\$ 156.00

CONCRETE READY MIX SPECS (WESTBANK)

Two (2) year contract for a supply of ready-mix concrete for the Jefferson Parish Department of Public Works – Streets and all Jefferson Parish agencies and municipalities.

Ready mix concrete on an as need basis – Two (2) year contract (Westbank).

The contract prices are firm during the entire two (2) year contract period.

GENERAL SPECIFICATIONS:

These specifications are prepared for the supply of ready mix concrete products on the basis of self-haul or delivered in cubic yard quantity amounts only as may be needed by different departments of Jefferson Parish to be picked up by the parish owned trucks from batching plant.

1. In the interest of safety, economy, and quality assurance of Jefferson Parish, prospective bidders must deliver within 30 minutes of 5701 Belle Terre Rd., Marrero, LA 70072, (travel time to and from – in a nine (9) yard cement mixer). This requirement is due to the parish's limited number of mixers available to pick up and deliver mix to project site.
2. The vendor shall be responsible for the design, control and loading of the mixtures into parish trucks at vendor's plant within 30 minutes of 5701 Belle Terre Rd., Marrero, LA 70072, (travel time to and from - in a nine (9) yard cement mixer).
3. Vendors are requested to quote a written unit price and its corresponding extension price as provided in the bid proposal forms.
4. Any products which do not conform to these specifications will be rejected. Any removal and/or replacement shall be at the expense of the vendor.
5. Cubic yard quantities shown in the bid proposal form are for purposes of bid comparison and for establishing a contract. Actual quantities purchased may be higher or lower than the quantities shown hereon in order to meet Parish needs via Parish pick-up or vendor delivery of at least two (2) cubic yards per purchase request. Vendor's plant shall be available to deliver concrete mix in properly designed concrete agitator trucks or load parish owned trucks from a batching plant throughout a normal working day (excluding holidays) from Monday through Friday of each week. A normal working day is considered to be between the hours of 7:00 AM and 3:00 PM.
6. Jefferson Parish reserves the right to award contracts or place orders on a lump sum or individual item basis, or such combinations, as its judgment shall be in the best interest of Jefferson Parish.
7. The contract will be awarded for the Westbank of Jefferson Parish. However, all parish agencies have the rights to purchase Portland cement concrete from either vendor (east bank or west bank), at their convenience.
8. All invoices against this order shall be sent to the respective department authorizing delivery. Payment to be made on a monthly basis by such departments. Invoices must show the corresponding purchase order number, the department's requisition number and the bid proposal number. The vendor is required to specify and certify the strength and type of concrete supplied.

9. On delivery items, prices shall include thirty (30) minute period allowance on arrival at job site to unload concrete. Any standby time in excess of this allowance will be compensated on minute rate quoted in the bid proposal under referenced items.
10. Quoted prices shall remain firm until the expiration of the contract.
11. Every effort will be made to provide sufficient advance notice for the required amount of concrete. However, it is required by the vendor to supply the order of concrete with a minimum of two (2) hours notice either for parish pick-up from plant or vendor's own delivery: Westbank.
12. The added delivery charge is to compensate for driver man/hour and truck equipment/hour when the required order is less than 8 Cu. Yd. Price for Portland-cement concrete will be compensated at bid unit price for parish pick-up from plant. As for parish pick-up from plant, contractor shall bid per each delivery.
13. Vendor will allow use of his wash-down area for cleaning trucks after load up and prior to driving away.

SPECIFICATIONS:

All ready mix concrete shall achieve minimum compression strength of 4000 PSI at 24 hours, 72 hours and 28 days, as required. All concrete must conform to Section 901 of the Louisiana Standard Specifications for Roads and Bridges, Latest Edition and any revisions.

NOTE:

1. Reduction in price per Cu. Yd. for fly ash cement concrete for all mixes shall be bid at the line item for Westbank when fly ash is used as an admixture at the request of the parish. Fly ash allowed only up to 20% of cement content or as stipulated by Section 901.08(a) of Louisiana Standard Specifications for Roads and Bridges, Latest Edition and any revisions.
2. All concrete shall contain Type I Portland cement.
3. Superplasticizer concrete contains an approved high range water reducing admixture. (HRWR/Superplasticizer): Vendor assures no greater than 3" slump to mix delivered at the site and no greater than 7" slump after the addition of superplasticizer. Bid price per cubic yard shall include all the admixtures to achieve 4000 PSI in 24 hours and 72 hours.
4. An approved set retarding admixture shall be used to facilitate placing and finishing when concrete temperature exceeds 85 degrees F.
5. An approved non-corrosive, non-chloride set-accelerating admixture shall be used to facilitate placing and finishing concrete as requested by Jefferson Parish Personnel – see attached brochure.
6. For temperature control, ice shall be added when concrete temperature reaches 95 degrees F.
7. The successful vendor shall submit for approval, a mix design for concrete per above requirements by a qualified quality control technician. The approved mix design shall be followed at all times. Any modification, changes or revisions shall be done only with the

written approval of the director of Public Works – Streets Department, Jefferson Parish, Louisiana.

BIDS SHALL BE ON:

Portland cement ready-mix concrete self-hauled and delivered to project (job) locations on the Westbank of Jefferson Parish.

In the interest of safety, economy, and quality assurance of Jefferson parish, prospective bidders must deliver within 30 minutes of 5701 Belle Terre Rd., Marrero, LA 70072, (travel time to and from - in a nine (9) yard cement mixer). This requirement is due to the parish's limited number of mixers available to pick up and deliver mix.

Jefferson Parish has the right to request cylinders to be cast for compression testing at any time.

DELIVERY:

Material is to be delivered to the project (job) location as requested within the limits of the Westbank of Jefferson Parish.

Concrete vendors must be able to deliver concrete within a 30 minute time frame to the project (job) site which could be located anywhere on the Westbank of Jefferson Parish (excluding Grand Isle.)

POLARSET®

Non-corrosive, non-chloride set-accelerating admixture

ASTM C494 Type C

Product Description



PolarSet® is a non-corrosive, non-chloride admixture for concrete. It accelerates cement hydration resulting in shortened setting times and increased early compressive strengths. PolarSet does not contain calcium chloride and is completely non-corrosive to reinforcing steel, metal decks and all metal components of your admixture storage and dispensing system. It is formulated to comply with ASTM C494 Type C and can be used at any dosage to comply with ACI 318 guidelines for chloride content of concrete. One gallon of PolarSet weighs approximately 11.25 lbs (1.35 kg/L).

Uses

PolarSet is specially formulated to reduce concrete setting times and increase early strengths for concrete in very cold conditions, and may be used to reduce the time that concrete must be protected against freezing in ambient temperatures as low as 20°F (-7°C). For conditions not subject to freezing, PolarSet may be used to speed finishing operations and/or form removal, leading to savings in concrete construction costs.

Special Feature

PolarSet provides set time acceleration and early strength development similar to that provided by calcium chloride, but without the potential corrosive effects. PolarSet can,

- Reduces set time and increases early strengths
- Can be used at high dosages
- Complies with ASTM C494 Type C

Product Advantages

- Designed for cold weather concreting at temperatures as low as 20°F (-7°C)
- Completely non-corrosive

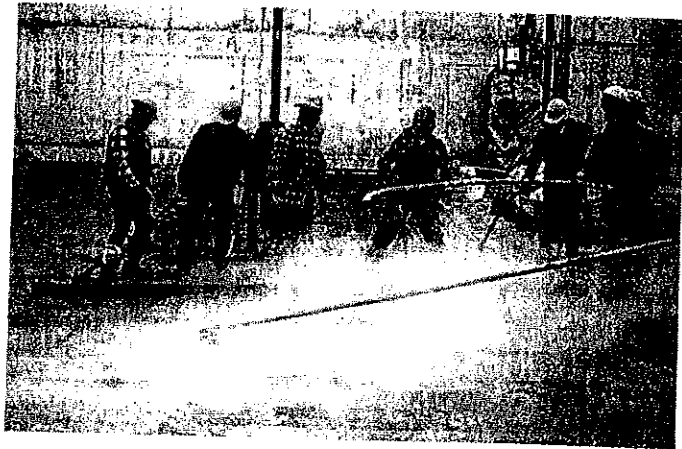
therefore, be used where potential corrosion of embedded or stressed steel must be avoided. It can also be used in concrete that is to be placed on steel clad or zinc coated steel decks where corrosion must be similarly avoided.

Performance

In concrete mixes, PolarSet accelerates the chemical reaction between Portland cement and water. It speeds up the formation of **gel**- the binder that bonds concrete aggregates together. Accelerated gel formation in turn shortens the setting time of concrete, compensates for the set-slowng effects of cold weather and contributes to the development of higher strengths. Gel formation promotes heat generation within the mix- helping to protect the concrete from freezing during the critical first hours after placement.

Addition Rates

The amount of PolarSet used will depend on specific job conditions, on local materials and on the degree of set acceleration and early



strength development required. Typical addition levels range from 8 to 60 fl oz/100 lbs (520 to 3910 mL/100 kg) of cement, but levels as high as 100 fl oz/100 lbs (6520 mL/100 kg) of cement can be used. For freeze protection purposes typical addition rates are between 60 to 80 fl oz/100 lbs (3910 to 5220 mL/100 kg) of cement.

Compatibility with Other Admixtures and Batch Sequencing

PolarSet is compatible with most Grace admixtures as long as they are added separately to the concrete mix, usually through the water holding tank discharge line. In general, it is recommended that PolarSet be added to the concrete mix near the end of the batch sequence for optimum performance. Different sequencing may be used if local testing shows better performance. Please see Grace Technical Bulletin TB-0110, *Admixture Dispenser Discharge Line Location and Sequencing for Concrete Batching Operations* for further recommendations. PolarSet should not come into contact with any other admixture before or during the batching process, even if diluted in mix water.

Pretesting of the concrete mix should be performed before use, and as conditions and materials change in order to assure compatibility, and to optimize dosage rates, addition times in the batch sequencing and concrete performance. For concrete that requires air entrainment, the use of an ASTM C260 air-entraining agent (such as Daravair™ or Darex™ product lines) is recommended to provide suitable air void parameters for freeze-thaw resistance. Please consult your Grace representative for guidance.

M Adjustment

Since PolarSet may be used at high dosages, the concrete producer should account for the water contained in the PolarSet. Each gallon

of PolarSet added to a concrete mix will contribute 6.5 lbs (0.78 kg/L) of water to that mix.

Packaging & Handling

PolarSet is currently available in bulk quantities by Grace metered systems, or in 55 gal (208 L) drums. PolarSet freezes at approximately -10°F (-23°C), but its set acceleration, strength gain and non-corrosive properties are completely restored by thawing and thorough agitation.

Dispensing Equipment

A complete line of accurate dispensers is available. PolarSet may be introduced on the sand, in the water, or at the end of the batch cycles. Similar to all concrete admixtures, PolarSet should not come in contact with other admixtures prior to entering the concrete.

Specifications

The set-accelerating admixture shall be PolarSet, non-corrosive, non-chloride set accelerator, as manufactured by Grace Construction Products. The admixture shall be used in strict accordance with the manufacturers' recommendations. The admixture shall comply with ASTM Designation C494 Type C and will not contain purposely added chlorides or contribute to steel corrosion. Certification of compliance will be made available upon request.

Concrete shall be proportioned in accordance with *Recommended Practice for Selecting Proportions for Normal Weight Concrete*, ACI 211.1 or *Recommended Practice for Selecting Proportions for Structural Lightweight Concrete*, ACI 211.2, or in accordance with ACI 318.

Note to Specifier: For use in freeze protection, request sample specification available from your Grace Engineering Services representative.

www.graceconstruction.com

North American Customer Service: 1-877-4AD-MIX1 (1-877-423-6491)

PolarSet, Daravair and Darex are registered trademarks of W.R. Grace & Co.-Conn.

We hope the information here will be helpful. It is based on data and knowledge considered to be true and accurate and is offered for the users' consideration, investigation and verification, but we do not warrant the results to be obtained. Please read all statements, recommendations or suggestions in conjunction with our conditions of sale, which apply to all goods supplied by us. No statement, recommendation or suggestion is intended for any use which would infringe any patent or copyright. W.R. Grace & Co.-Conn., 62 Whittemore Avenue, Cambridge, MA 02140.
In Canada, Grace Canada, Inc., 294 Clements Road, West, Ajax, Ontario, Canada L1S 3C6.

This product may be covered by patents or patents pending.
Printed in U.S.A. 11/07

Copyright 2007. W.R. Grace & Co.-Conn. PS-1E
FAIL#1M

GRACE

Non-Public Works Bid

AFFIDAVIT

STATE OF LA.

PARISH/COUNTY OF JEFFERSON

BEFORE ME, the undersigned authority, personally came and appeared: NICOLE

DITTA CIACCIO, (Affiant) who after being by me duly sworn, depose and said that he/she is the fully authorized VICE PRESIDENT of CARLO DITTA LLC (Entity), the party who submitted a bid in response to Bid Number 50-00140805, to the Parish of Jefferson.

Affiant further said:

Campaign Contribution Disclosures

(Choose A or B, if option A is indicated please include the required attachment):

Choice A _____ Attached hereto is a list of all campaign contributions, including the date and amount of each contribution, made to current or former elected officials of the Parish of Jefferson by Entity, Affiant, and/or officers, directors and owners, including employees, owning 25% or more of the Entity during the two-year period immediately preceding the date of this affidavit or the current term of the elected official, whichever is greater. Further, Entity, Affiant, and/or Entity Owners have not made any contributions to or in support of current or former members of the Jefferson Parish Council or the Jefferson Parish President through or in the name of another person or legal entity, either directly or indirectly.

Choice B X there are **NO** campaign contributions made which would require disclosure under Choice A of this section.

Debt Disclosures

(Choose A or B, if option A is indicated please include the required attachment):

Choice A _____ Attached hereto is a list of all debts owed by the affiant to any elected or appointed official of the Parish of Jefferson, and any and all debts owed by any elected or appointed official of the Parish to the Affiant.

Choice B X _____ There are **NO** debts which would require disclosure under Choice A of this section.

Affiant further said:

That Affiant has employed no person, corporation, firm, association, or other organization, either directly or indirectly, to secure the public contract under which he received payment, other than persons regularly employed by the Affiant whose services in connection with the construction, alteration or demolition of the public building or project or in securing the public contract were in the regular course of their duties for Affiant; and

[The remainder of this page is intentionally left blank.]

That no part of the contract price received by Affiant was paid or will be paid to any person, corporation, firm, association, or other organization for soliciting the contract, other than the payment of their normal compensation to persons regularly employed by the Affiant whose services in connection with the construction, alteration or demolition of the public building or project were in the regular course of their duties for Affiant.

Nicole Ditta Craccio
Signature of Affiant

Nicole Ditta Craccio
Printed Name of Affiant

SWORN AND SUBSCRIBED TO BEFORE ME

ON THE 23rd DAY OF January, 2023

Michael P. Craccio
Notary Public

Michael P. Craccio
Printed Name of Notary

21428
Notary ~~Bar~~ Roll Number

My commission expires For Life

CARLO DITTA, LLC*Ready Mix Concrete*

**UNANIMOUS WRITTEN CONSENT
OF THE MANAGERS
AND THE MEMBERS
CARLO DITTA, L.L.C.**

Pursuant to the Louisiana Limited Liability Company and in lieu of a meeting of the Members and the Managers, the undersigned, constituting all of the members and Managers of CARLO DITTA, L.L.C., a Louisiana limited liability company duly registered with the Louisiana Secretary of State on December 31, 2020 (the "**Company**"), adopted the following resolutions effective as of the 5th day of January, 2023:


WHEREAS, Company was formed as a result of the conversion of Carlo Ditta, Inc. into a limited liability company under applicable Louisiana law;

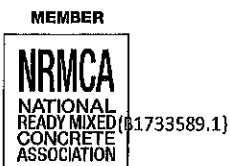
WHEREAS, the Members hereby appoint, constitute and designate Nicole Ditta Ciaccio, as agent and attorney-in-fact of Carlo Ditta, LLC with full power and authority to act on behalf of this Company in all negotiations, bidding, concerns and transactions with the Parish of Jefferson or any of its agencies, departments, employees or agents, including but not limited to the execution of all bids, papers, documents, affidavits, bonds, sureties, contracts and acts and to receive all purchase orders and notices issued pursuant to the provisions of any such bid or contract, Carlo Ditta, LLC hereby ratifying, approving, confirming and accepting each and every such act performed by said agent and attorney-in-fact.

IN WITNESS WHEREOF, the undersigned have executed this Unanimous Written Consent of Carlo Ditta, L.L.C. effective as of the date first written above.

MEMBERS AND MANAGERS:


NICOLE DITTA CIACCIO


JOSEPH C. DITTA, II



"If It's About Concrete, Ask Ditta, They Know."



**SECRETARY
OF STATE**
JEFF LANDRY

(<https://www.sos.la.gov/Pages/default.aspx>)

Search for Louisiana Business Filings

[Buy Certificates and Certified Copies](#)

[Subscribe to Electronic Notification](#)

[Print Detailed Record](#)

Name	Type	City	Status
CARLO DITTA, L.L.C.	Limited Liability Company	HARVEY	Active

Previous Names

CARLO DITTA, INC. (Changed: 12/31/2020)

Business: CARLO DITTA, L.L.C.

Charter Number: 23704670K

Registration Date: 2/4/1957

Domicile Address

1445 MACARTHUR AVENUE

HARVEY, LA 70058

Mailing Address

P. O. BOX 488

HARVEY, LA 70059

Status

Status: Active

Annual Report Status: In Good Standing

File Date: 2/4/1957

Last Report Filed: 1/28/2022

Type: Limited Liability Company

GET HELP

Registered Agent(s)

Agent: JOSEPH C. DITTA, II
Address 1: 1445 MACARTHUR AVENUE
City, State, Zip: HARVEY, LA 70058
Appointment Date: 12/31/2020

Officer(s)

Additional Officers: No

Officer: JOSEPH C. DITTA, II
Title: Manager
Address 1: 1445 MACARTHUR AVENUE
City, State, Zip: HARVEY, LA 70058

Officer: NICOLE DITTA CIACCIO
Title: Manager
Address 1: 1445 MACARTHUR AVENUE
City, State, Zip: HARVEY, LA 70058

Amendments on File (4)

Description	Date
Amendment	2/3/1964
Amendment	5/8/2002
Conversion	12/31/2020
Name Change	12/31/2020

[Back to Search Results](#)[New Search](#)[View Shopping Cart](#)

© 2023 Louisiana Department of State

GET HELP

Non-Public Works Bid Affidavit Instructions

- Affidavit is supplied as a courtesy to Affiants, but it is the responsibility of the affiant to insure the affidavit they submit to Jefferson Parish complies, in both form and content, with federal, state and parish laws.
- Affidavit must be signed by an authorized representative of the entity or the affidavit will not be accepted.
- Affidavit must be notarized or the affidavit will not be accepted.
- Notary must sign name, print name, and include bar/notary number, or the affidavit will not be accepted.
- Affiant **MUST** select either A or B when required or the affidavit will not be accepted.
- Affiants who select choice A must include an attachment or the affidavit will not be accepted.
- If both choice A and B are selected, the affidavit will not be accepted.
- Affidavit marked N/A will not be accepted.
- It is the responsibility of the Affiant to submit a new affidavit if any additional campaign contributions are made after the affidavit is executed but prior to the time the council acts on the matter.

Instruction sheet may be omitted when submitting the affidavit

STANDARD INSURANCE REQUIREMENTS FOR BIDDING PURPOSES

All required insurance under this bid shall conform to Jefferson Parish Resolution No. 113646 or No. 113647, as applicable. Contractors may not commence any work under any ensuing contract unless and until all required insurance and associated evidentiary requirements thereto have been met, along with any additional specifications contained in the **Invitation to Bid**. Except as where otherwise precluded by law, the Parish Attorney or his designee, with the concurrence of the Director of Risk Management or his designee, may agree on a case-by-case basis, to deviate from Jefferson Parish's standard insurance requirements, as provided in this Section. Vendors requesting deviation therefrom shall submit such requests in writing, along with compelling substantiation, to the Purchasing Department prior to the bid's due date. Any changes to the insurance requirements will be reflected in the bid specifications and addenda. Prior to contract execution and at all times thereafter during the term of such contract, contractors must provide and continuously maintain all coverages as required by the foregoing Resolutions, and the contract documents. Failure to do so shall be grounds for suspension, discontinuation or termination of the contract.

For bidding purposes, bidders must submit with bid submission a current (valid) insurance certificate evidencing the required coverages. Failure to comply will cause bid to be rejected. The current insurance certificate will be used for proof of insurance at time of evaluation. Thereafter, and prior to contract execution, the low bidder will be required to provide final insurance certificates to the Parish which shall name **the Jefferson Parish, its Districts Departments and Agencies under the direction of the Parish President and the Parish Council** as additional insureds regarding negligence by the contractor for the Commercial General Liability and the Comprehensive Automobile Liability policies. Additionally, said certificates should reflect the name of the Parish Department receiving goods and services and reference the respective Jefferson Parish bid number.

JEFFERSON PARISH REQUIRED STANDARD INSURANCE

☒ WORKER'S COMPENSATION INSURANCE

As required by Louisiana State Statute, exception; Employer's Liability, Section B shall be \$1,000,000 per occurrence when Work is to be over water and involves maritime exposures to cover all employees not covered under the State Worker's Compensation Act, otherwise this limit shall be no less than \$500,000 per occurrence.

Note: If your company is not required by law to carry workmen's compensation insurance, i.e. not a Louisiana company, sole employee of the company, then bidders must request a workmen's compensation insurance declaration affidavit prior to the bid opening date. This insurance declaration affidavit must be fully completed, signed, properly notarized and submitted with the bid. A scanned copy may be submitted with the bid; however, the successful bidder must submit the original affidavit in its original format and without material alteration upon contract execution. Failure to comply will result in the bid submission being

rejected as non-responsive. The Parish reserves the right to award bid to the next lowest responsive and responsible bidder in this event.

☒ **COMMERCIAL GENERAL LIABILITY**

Shall provide limits not less than the following: \$1,000,000.00 Combined Single Limit per Occurrence for bodily injury and property damage.

☒ **COMPREHENSIVE AUTOMOBILE LIABILITY**

Bodily injury liability \$1,000,000.00 each person; \$1,000,000.00 each occurrence.
Property Damage Liability \$1,000,000.00 each occurrence.

Note: This category may be omitted if bidders do not/will not utilize company vehicles for the project or do not possess company vehicles. Bidder must request an automobile insurance declaration affidavit prior to the bid opening date. This insurance declaration affidavit must be fully completed, signed, properly notarized and submitted with the bid. A scanned copy of the completed, signed and properly notarized affidavit may be submitted with the bid; however, the successful bidder must submit the original affidavit in its original format and without material alteration upon contract execution. Failure to comply will result in the bid submission being rejected as non-responsive. The Parish reserves the right to award bid to the next lowest responsive and responsible bidder in this event.

DEDUCTIBLES - The Parish Attorney with concurrence of the Director of Risk Management have waived the deductible section of the Terms and Conditions for all Invitations to Bid, until further notice.

UMBRELLA LIABILITY COVERAGE

An umbrella policy or excess may be used to meet minimum requirements.

FOR CONSTRUCTION AND RENOVATION PROJECTS:

The following are required if selected below. Such insurance is due upon contract execution.

☐ **OWNER'S PROTECTIVE LIABILITY**

To be for the same limits of liability for bodily injury and property damage liability established for commercial general liability.

☐ **BUILDER'S RISK INSURANCE**

The contractor shall maintain Builder's Risk Insurance at his own expense to insure both the owner (Parish of Jefferson) and contractor as their interest may appear.

ACORD™

CERTIFICATE OF LIABILITY INSURANCE

DATE (MM/DD/YYYY)

1/18/2023

THIS CERTIFICATE IS ISSUED AS A MATTER OF INFORMATION ONLY AND CONFERS NO RIGHTS UPON THE CERTIFICATE HOLDER. THIS CERTIFICATE DOES NOT AFFIRMATIVELY OR NEGATIVELY AMEND, EXTEND OR ALTER THE COVERAGE AFFORDED BY THE POLICIES BELOW. THIS CERTIFICATE OF INSURANCE DOES NOT CONSTITUTE A CONTRACT BETWEEN THE ISSUING INSURER(S), AUTHORIZED REPRESENTATIVE OR PRODUCER, AND THE CERTIFICATE HOLDER.

IMPORTANT: If the certificate holder is an ADDITIONAL INSURED, the policy(ies) must have ADDITIONAL INSURED provisions or be endorsed. If SUBROGATION IS WAIVED, subject to the terms and conditions of the policy, certain policies may require an endorsement. A statement on this certificate does not confer any rights to the certificate holder in lieu of such endorsement(s).

PRODUCER Louisiana Companies 801 North Blvd. Baton Rouge, LA 70802 225 383-4761	CONTACT NAME: Jennifer DuBois, CIC	
	PHONE (A/C, No, Ext): 225 383-4761	FAX (A/C, No): 225-387-4336
	E-MAIL ADDRESS: jdubois@lacompanies.com	
INSURED Carlo Ditta, LLC P.O. Box 488 Harvey, LA 70059	INSURER(S) AFFORDING COVERAGE	
	INSURER A: Zurich American Insurance Company	NAIC #: 16535
	INSURER B: Acceptance Indemnity Insurance Company	20010
	INSURER C: Burlington Insurance Company	23620
	INSURER D: GuideOne National Insurance Company	14167
	INSURER E: Markel American Insurance Co	28932
	INSURER F:	

COVERAGES

CERTIFICATE NUMBER:

REVISION NUMBER:

THIS IS TO CERTIFY THAT THE POLICIES OF INSURANCE LISTED BELOW HAVE BEEN ISSUED TO THE INSURED NAMED ABOVE FOR THE POLICY PERIOD INDICATED. NOTWITHSTANDING ANY REQUIREMENT, TERM OR CONDITION OF ANY CONTRACT OR OTHER DOCUMENT WITH RESPECT TO WHICH THIS CERTIFICATE MAY BE ISSUED OR MAY PERTAIN, THE INSURANCE AFFORDED BY THE POLICIES DESCRIBED HEREIN IS SUBJECT TO ALL THE TERMS, EXCLUSIONS AND CONDITIONS OF SUCH POLICIES. LIMITS SHOWN MAY HAVE BEEN REDUCED BY PAID CLAIMS.

INSR LTR	TYPE OF INSURANCE	ADDL SUBR INSR WVD	POLICY NUMBER	POLICY EFF (MM/DD/YYYY)	POLICY EXP (MM/DD/YYYY)	LIMITS	
A	<input checked="" type="checkbox"/> COMMERCIAL GENERAL LIABILITY <input type="checkbox"/> CLAIMS-MADE <input checked="" type="checkbox"/> OCCUR GEN'L AGGREGATE LIMIT APPLIES PER: <input type="checkbox"/> POLICY <input checked="" type="checkbox"/> PROJECT <input type="checkbox"/> LOC OTHER:	X	X	GLO028518705	10/01/2022	10/01/2023	EACH OCCURRENCE \$2,000,000 DAMAGE TO RENTED PREMISES (Ea occurrence) \$300,000 MED EXP (Any one person) \$5,000 PERSONAL & ADV INJURY \$1,000,000 GENERAL AGGREGATE \$4,000,000 PRODUCTS - COMP/OP AGG \$4,000,000 \$
A	AUTOMOBILE LIABILITY <input checked="" type="checkbox"/> ANY AUTO OWNED AUTOS ONLY <input checked="" type="checkbox"/> HIRED AUTOS ONLY <input type="checkbox"/> SCHEDULED AUTOS NON-OWNED AUTOS ONLY	X	X	BAP028518605	10/01/2022	10/01/2023	COMBINED SINGLE LIMIT (Ea accident) \$2,000,000 BODILY INJURY (Per person) \$ BODILY INJURY (Per accident) \$ PROPERTY DAMAGE (Per accident) \$ \$
B	<input type="checkbox"/> UMBRELLA LIAB <input checked="" type="checkbox"/> EXCESS LIAB <input type="checkbox"/> DED <input type="checkbox"/> RETENTION \$	X	X	EMM000067202	10/01/2022	10/01/2023	EACH OCCURRENCE \$5,000,000 AGGREGATE \$5,000,000 \$
A	WORKERS COMPENSATION AND EMPLOYERS' LIABILITY ANY PROPRIETOR/PARTNER/EXECUTIVE OFFICER/MEMBER EXCLUDED? <input checked="" type="checkbox"/> N (Mandatory in NH) If yes, describe under DESCRIPTION OF OPERATIONS below		X	WC028518505	10/01/2022	10/01/2023	<input checked="" type="checkbox"/> PER STATUTE <input type="checkbox"/> OTH-ER E.L. EACH ACCIDENT \$2,000,000 E.L. DISEASE - EA EMPLOYEE \$2,000,000 E.L. DISEASE - POLICY LIMIT \$2,000,000
C	2nd Layer Excess			268BE0089603	10/01/2022	10/01/2023	\$5,000,000/ \$5,000,000
D	3rd Layer Excess			56000278001	10/01/2022	10/01/2023	\$4,000,000/ \$4,000,000
E	Leased/Rented EQ			MKLM2IM0001159	10/01/2022	10/01/2023	\$300,000

DESCRIPTION OF OPERATIONS / LOCATIONS / VEHICLES (ACORD 101, Additional Remarks Schedule, may be attached if more space is required)

Certificate holder is additional insured with respect to the general liability and auto liability policies as required by written contract when executed prior to a loss, subject to policy terms, conditions and exclusions.

Additional insured provision on the general liability and auto liability policy is primary and non (See Attached Descriptions)

CERTIFICATE HOLDER

CANCELLATION

Jefferson Parish
200 Derbigny Street, Ste 4400
Gretna, LA 70053

SHOULD ANY OF THE ABOVE DESCRIBED POLICIES BE CANCELLED BEFORE THE EXPIRATION DATE THEREOF, NOTICE WILL BE DELIVERED IN ACCORDANCE WITH THE POLICY PROVISIONS.

AUTHORIZED REPRESENTATIVE

Jennifer DuBois

DESCRIPTIONS (Continued from Page 1)

contributory as required by written contract executed prior to a loss, subject to policy terms, conditions and exclusions.

General liability includes contractual liability coverage except as provided in exception Section I Coverages, 2. Exclusion b. Contractual liability as listed in the Commercial General Liability Coverage Form CG0001 (04/13).

XCU not excluded under the general liability.

Waiver of subrogation is provided with respect to the workers compensation, general liability and auto liability policies as required by written contract when executed prior to a loss, subject to policy terms, conditions and exclusions.

Workers compensation includes alternate employer endorsement as required by written contract executed prior to a loss subject to policy terms, conditions, and exclusions.

Thirty day notice of cancellation, except ten days for nonpayment of premium as required by written contract executed prior to a loss, subject to policy terms, conditions and exclusions.

All Excess liability policies follow form over all primary lines of coverage.

Certificate holder is loss payee with respect to lease/rented equipment coverage as required by written contract executed prior to a loss, subject to policy terms, conditions and exclusions.

Jefferson Parish Bid# 50-00140805



01-27-2023

Bid Bond in Accordance with Contract Specifications

SLA01271284

Carlo Ditta LLC

Bond Number**Principal Name**

P. O. Box 488, Harvey, LA, 70059, US

Principal Address**Principal Signature**

Jefferson Parish

200 Derbigny Street, Gretna, LA, 70053, US

Owner/Obligee Name**Owner/Obligee Address****Bond Information**

01-31-2023

The Gray Casualty & Surety Company

25575

Bid Date**Surety****Contractor Vendor ID Number**

50-00140805

Contract ID Number

Two (2) Year Contract to Provide Ready-Mix Concrete for the Jefferson Parish Department of Public Works, Streets and All Jefferson Parish Agencies and Municipalities

Description of Job

Five Percent of Amount Bid

5%

Amount of Bid Security**Bid Security Maximum****Bid Security Percentage**

Alexander J Ellsworth

Attorney-in-Fact

Ellsworth Corporation

Bond Entered and Executed By**Primary Agency****Attorney-In-Fact Signature**

Know all men by these presents that The Gray Casualty & Surety Company, a Corporation duly organized under the laws of the State of LA, are held and firmly bound unto the above owner/obligee by the transmission. The surety agrees to waive the statute of Fraud defense and further agrees that the owner/obligee is a third party beneficiary of the waiver for the purposes of enforcing this bid bond.