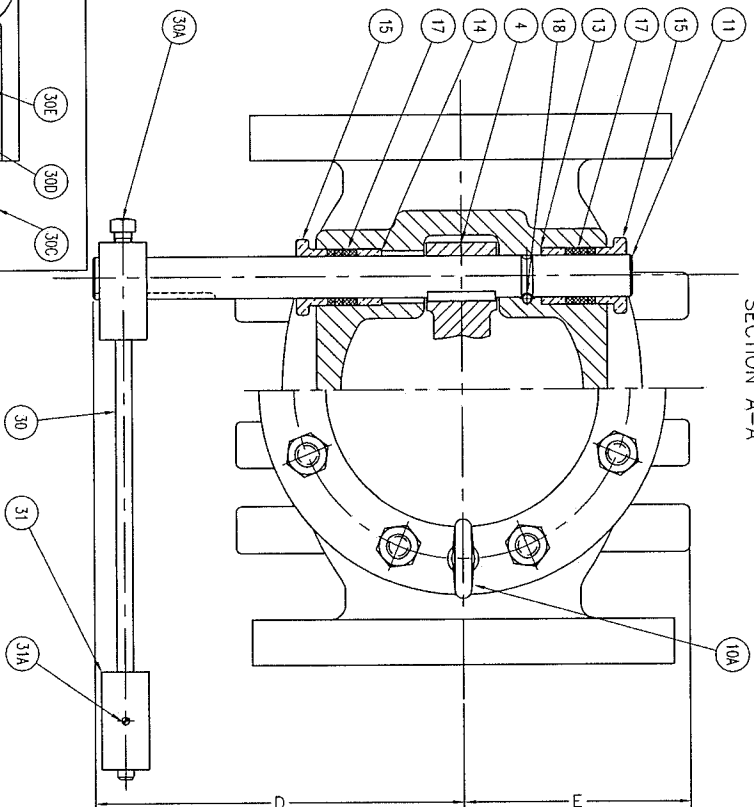
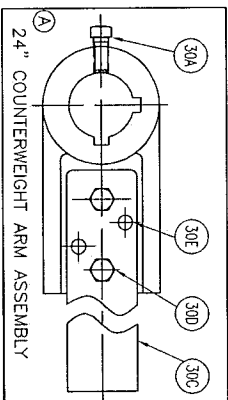
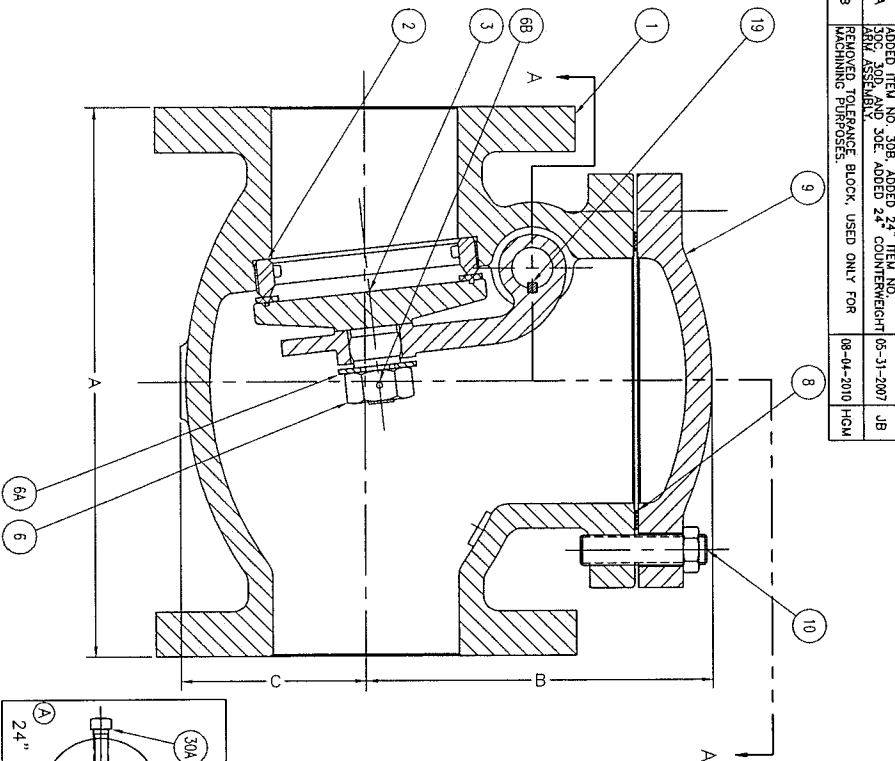


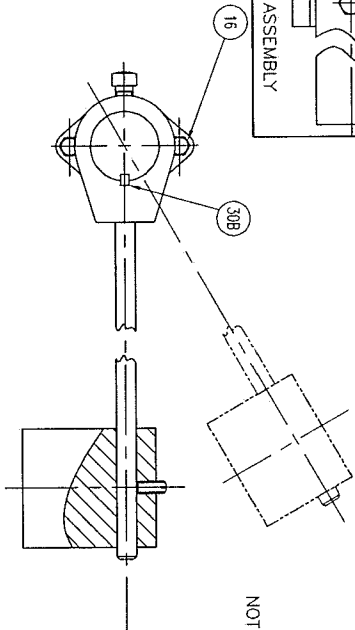
REV.	DESCRIPTION	DATE	BY
A	ADDED ITEM NO. 30B, ADDED 24" ITEM NO. 30C, ADDED 24" COUNTERWEIGHT (05-31-2007) JB		
B	REMOVED TOLERANCE BLOCK, USED ONLY FOR MACHINING PURPOSES.	08-04-2010	HGM



NO.	DESCRIPTION
1	BODY
2	BODY SEAT
3	DISC W/SEAT
4	DISC ARM
6	DISC NUT
6A	DISC NUT WASHER
6B	DISC NUT PIN
B	COVER GASKET
9	COVER
10	COVER STUD W/NUT
10A	COVER EYE BOLT
11	SHAFT
13	INNER BUSHING
14	OUTER BUSHING
15	GLAND
16	GLAND BOLT
17	PACKING
18	SHAFT LOCK PIN
19	DISC ARM KEY
30	COUNTERWEIGHT ARM
30A	COUNTERWEIGHT ARM SET SCREW
30B	CNT ARM (24" ONLY)
30C	CNT ARM BOLTS (24" ONLY)
30D	CNT ARM PINS (24" ONLY)
30E	CNT ARM PINS (24" ONLY)
31	COUNTERWEIGHT
31A	COUNTERWEIGHT SET SCREW

# DIMENSIONS

SIZE	A				B		C		D		E	
	INCHES	mm	INCHES	mm	INCHES	mm	INCHES	mm	INCHES	mm	INCHES	mm
3"	80	9 1/2	241	6 1/4	157	3	76	9 3/4	247	4 1/4	102	
4"	100	11 1/2	292	7 1/2	186	3 3/4	94	10 1/4	259	5	122	
6"	150	14	356	9 1/2	237	4 7/8	125	12	301	6 1/4	158	
8"	200	19 1/2	495	11 1/4	282	5	163	14 1/4	358	7 3/4	193	
10"	250	24 1/2	622	14 1/4	357	7 1/2	188	15 1/4	387	9 1/4	233	
12"	300	27 1/2	698	16 1/2	417	9	224	16 1/2	416	10 1/4	260	
14"	350	31	787	17 3/4	447	10 1/2	265	17 1/2	439	11 1/4	280	
16"	400	36	914	19 1/2	495	11 3/4	296	22	557	12 1/2	312	
18"	450	40	1016	21 1/4	536	12 3/4	320	23 1/4	590	13 1/2	343	
20"	500	40	1016	23 1/4	586	14	357	24 1/2	621	14 3/4	373	
24"	600	47 5/8	1210	28 1/4	720	17 1/4	435	27	686	18 1/2	470	
30"	750	60	1524	33	838	26	660	41	1041			



NOTE: FLANGES PER ANSI B16.1, 125 LB. CLASS

**GA INDUSTRIES, INC.**

3"-30" LUDLOW FIGURE 340-W SWING  
CHECK VALVE W/ LEVER & WEIGHT

SERIAL NO.		SCALE		DRAWN BY	
		NONE		JB	
REFERENCES		EFFECTIVE DATE 01-16-2007 TO		APPR. BY	
		FIG. NUMBER		C	
		FILE		DRAWING NO.	
		340-W		C-1366	
				REV.	
				B	

J:\GA-VALVE\GA-SHOW\C-1366-B.DWG



## Customer List of Materials

DWG C-1366

3" - 30" Figure 340-W Ludlow Swing Check Valve  
with Lever and Weight

No.	Part Description	Material	Classification
1	Body	Ductile Iron	UNS F33100
✓ 2	Body Seat	Stainless Steel	UNS S31600
3	Disc w/ Seat	Ductile Iron / Rubber	UNS F33100 / Buna-N
4	Disc Arm	Ductile Iron	UNS F33100
6	Disc Nut	Steel	Commercial
6A	Disc Nut Washer	Steel	Commercial
6B	Disc Nut Pin	Stainless Steel	UNS S30400
8*	Cover Gasket	Composition	Graphite
9	Cover	Ductile Iron	UNS F33100
10	Cover Stud w/ Nut	Steel	Commercial
10A	Cover Eye Bolt	Steel	Commercial
11	Shaft	Stainless Steel	UNS S30400
13	Inner Bushing	Bronze	UNS C83600
14	Outer Bushing	Bronze	UNS C83600
15	Gland	Ductile Iron	Commercial
16	Gland Bolt	Steel	ASTM A307
17*	Packing	Composition	Graphite
18	Shaft Lock Pin	Stainless Steel	UNS S30400
19	Disc Arm Key	Stainless Steel	UNS S30400
30	Counterweight Arm	Cast Iron / Steel	UNS F12102 / Commercial
30A	Counterweight Arm Set Screw	Steel	ASTM A307
30B	Counterweight Arm Bolts	Steel	ASTM A307
30C	Counterweight Arm	Steel (24")	Commercial
30D	Counterweight Arm Key	Stainless Steel (24")	UNS S30400
30E	Counterweight Arm Pins	Steel (24")	Commercial
31	Counterweight	Steel	Commercial
31A	Counterweight Set Screw	Steel	ASTM A307

\* Recommended Spare Parts