



Badger Meter

4545 W Brown Deer Road
PO Box 245036
Milwaukee, Wisconsin 53224-9536
414-355-0400 | 800-876-3837
www.badgermeter.com

October 15, 2020

Ms. Donna M. Reamey
Jefferson Parish
Jefferson Parish General Government Building
West Bank Purchasing Department
200 Derbigny Street, Suite 4400
Gretna, LA 70053

**RE: Two-Year Contract for the Supply of Residential Water Meters and Assemblies
Bid Number 50-00130125**

Bid due: October 15, 2020 at 2:00 PM

Dear Ms. Reamey:

This letter is attached to and becomes part of the above-referenced bid.

Payment terms are net 30 days.

Prices quoted in this bid, if awarded to Badger Meter, will remain firm for two years, through October 30, 2022, if acceptance is made within 45 days.

We provide certification files to help manage meter and endpoint inventory and to maintain meter accuracy data. The standard method of delivery for this format is via electronic mail. Any deviations from our standard format, or any custom file formats, will be considered on a time and material basis.

A copy of the bid tabulation, for our records, is appreciated. Electronic results can be emailed to bids@badgermeter.com.

In the event you have any questions regarding this correspondence, we can be reached by telephone at 800-876-3837 ext. 12728 or via email at bids@badgermeter.com. Additionally, you may contact your Account Manager, Brent Bennett, via email at bbennett@badgermeter.com or by phone at 225-305-3079.

We appreciate the opportunity to support your metering needs.

Sincerely,

BADGER METER, INC.

Korrine L. Fleming
Assistant Secretary

BID BOND

Travelers Casualty and Surety Company of America
One Tower Square 3PB, Hartford, CT 06183

Bond No. Bid Bond

KNOW ALL MEN BY THESE PRESENTS,

That we, Badger Meter, Inc., as Principal, hereinafter called the Principal, and Travelers Casualty and Surety Company of America, of One Tower Square 3PB, Hartford, CT 06183, a corporation duly organized under the laws of the State of Connecticut, as Surety, hereinafter called the Surety, are held and firmly bound unto Jefferson Parish Purchasing Department, as Obligee, hereinafter called the Obligee, in the sum of Five Percent of Amount Bid Dollars (\$ 5%), for the payment of which sum well and truly to be made, the said Principal and the said Surety, bind ourselves, our heirs, executors, administrators, successors and assigns, jointly and severally, firmly by these presents.

WHEREAS, the Principal has submitted a bid for Bid #: 50-132238; Two (2) Year Supply of Water Meters

NOW, THEREFORE, if the Obligee shall accept the bid of the Principal and the Principal shall enter into a Contract with the Obligee in accordance with the terms of such bid, and give such bond or bonds as may be specified in the bidding or Contract Documents with good and sufficient surety for the faithful performance of such Contract and for the prompt payment of labor and material furnished in the prosecution thereof, or in the event of the failure of the Principal to enter such Contract and give such bond or bonds, if the Principal shall pay to the Obligee the difference not to exceed the penalty hereof between the amount specified in said bid and such larger amount for which the Obligee may in good faith contract with another party to perform the Work covered by said bid, then this obligation shall be null and void, otherwise to remain in full force and effect.

Signed and sealed this 12th day of October, 2020.

Badger Meter, Inc.

By: William R.A. Bergum

William R.A. Bergum, VP General Counsel & Secretary

Travelers Casualty and Surety Company of America

Cathy Hutson

, Attorney-in-Fact



Christopher D. Washington
Christopher D.
Washington

Witness

Sarah E. DeYoung
Sarah E. DeYoung

Witness.

Limited Maintenance Provision

Rider

To be attached to and form part of this Bid Bond issued by Travelers Casualty and Surety Company of America on behalf of Badger Meter, Inc. in the amount of Five Percent of Amount Bid (5%) with bid date of October 15, 2020, in favor of Jefferson Parish Purchasing Department for Bid #:50-132238; Two (2) Year Supply of Water Meters.

Surety shall guarantee that the work will be free of defective materials and workmanship for a period of **Twelve (12)** months following completion of the contract. Any additional warranty or guarantee whether expressed or implied is extended by the Principal or Manufacturer only, and the Surety assumes no liability for such a guarantee.

BADGER METER, INC.

By: William R.A. Bergum
William R.A. Bergum, VP-General Counsel &
Secretary

**TRAVELERS CASUALTY AND SURETY
COMPANY OF AMERICA**

By: Cathy Hutson
Cathy Hutson; Attorney-In-Fact



Travelers Casualty and Surety Company of America
Travelers Casualty and Surety Company
St. Paul Fire and Marine Insurance Company
Farmington Casualty Company

POWER OF ATTORNEY

KNOW ALL MEN BY THESE PRESENTS: That Travelers Casualty and Surety Company of America, Travelers Casualty and Surety Company, St. Paul Fire and Marine Insurance Company, and Farmington Casualty Company are corporations duly organized under the laws of the State of Connecticut (herein collectively called the "Companies"), and that the Companies do hereby make, constitute and appoint **Cathy Hutson** of **Milwaukee, WI**, their true and lawful Attorney-in-Fact to sign, execute, seal and acknowledge any and all bonds, recognizances, conditional undertakings and other writings obligatory in the nature thereof on behalf of the Companies in their business of guaranteeing the fidelity of persons, guaranteeing the performance of contracts and executing or guaranteeing bonds and undertakings required or permitted in any actions or proceedings allowed by law, including the following bond:

Surety Bond No.: Bid Bond
OR

Principal: Badger Meter, Inc.
Obligee: Jefferson Parish Purchasing Department

Project Description: Bid #: 50-132238; Two (2) Year Supply of Water Meters

IN WITNESS WHEREOF, the Companies have caused this instrument to be signed, and their corporate seals to be hereto affixed, this **6th** day of **May**, 2019.



State of Connecticut

By: 
 Robert L. Raney, Senior Vice President

City of Hartford ss.

On this the **6th** day of **May**, 2019, before me personally appeared **Robert L. Raney**, who acknowledged himself to be the Senior Vice President of each of the Companies, and that he, as such, being authorized so to do, executed the foregoing instrument for the purposes therein contained by signing on behalf of said Companies by himself as a duly authorized officer.

IN WITNESS WHEREOF, I hereunto set my hand and official seal.

My Commission expires the **30th** day of **June**, 2021




 Anna P. Nowik, Notary Public

This Power of Attorney is granted under and by the authority of the following resolutions adopted by the Boards of Directors of each of the Companies, which resolutions are now in full force and effect, reading as follows:

RESOLVED, that the Chairman, the President, any Vice Chairman, any Executive Vice President, any Senior Vice President, any Vice President, any Second Vice President, the Treasurer, any Assistant Treasurer, the Corporate Secretary or any Assistant Secretary may appoint Attorneys-in-Fact and Agents to act for and on behalf of the Company and may give such appointee such authority as his or her certificate of authority may prescribe to sign with the Company's name and seal with the Company's seal bonds, recognizances, contracts of indemnity, and other writings obligatory in the nature of a bond, recognizance, or conditional undertaking, and any of said officers or the Board of Directors at any time may remove any such appointee and revoke the power given him or her; and it is

FURTHER RESOLVED, that the Chairman, the President, any Vice Chairman, any Executive Vice President, any Senior Vice President or any Vice President may delegate all or any part of the foregoing authority to one or more officers or employees of this Company, provided that each such delegation is in writing and a copy thereof is filed in the office of the Secretary; and it is

FURTHER RESOLVED, that any bond, recognizance, contract of indemnity, or writing obligatory in the nature of a bond, recognizance, or conditional undertaking shall be valid and binding upon the Company when (a) signed by the President, any Vice Chairman, any Executive Vice President, any Senior Vice President or any Vice President, any Second Vice President, the Treasurer, any Assistant Treasurer, the Corporate Secretary or any Assistant Secretary and duly attested and sealed with the Company's seal by a Secretary or Assistant Secretary; or (b) duly executed (under seal, if required) by one or more Attorneys-in-Fact and Agents pursuant to the power prescribed in his or her certificate or their certificates of authority or by one or more Company officers pursuant to a written delegation of authority; and it is

FURTHER RESOLVED, that the signature of each of the following officers: President, any Executive Vice President, any Senior Vice President, any Vice President, any Assistant Vice President, any Secretary, any Assistant Secretary, and the seal of the Company may be affixed by facsimile to any Power of Attorney or to any certificate relating thereto appointing Resident Vice Presidents, Resident Assistant Secretaries or Attorneys-in-Fact for purposes only of executing and attesting bonds and undertakings and other writings obligatory in the nature thereof, and any such Power of Attorney or certificate bearing such facsimile signature or facsimile seal shall be valid and binding upon the Company and any such power so executed and certified by such facsimile signature and facsimile seal shall be valid and binding on the Company in the future with respect to any bond or understanding to which it is attached.

I, **Kevin E. Hughes**, the undersigned, Assistant Secretary of each of the Companies, do hereby certify that the above and foregoing is a true and correct copy of the Power of Attorney executed by said Companies, which remains in full force and effect.

Dated this 12th day of October, 2020.




 Kevin E. Hughes, Assistant Secretary

To verify the authenticity of this Power of Attorney, please call us at 1-800-421-3880.
 Please refer to the above-named Attorney-in-Fact and the details of the bond to which this Power of Attorney is attached.

Delivery Schedule

Jefferson Parish, LA Bid No. 50 - 00132238

Item No.	Quantity	Description	Delivery – After Receipt of Order (ARO)
1	3,000	5/8" x 3/4" Recordall® Model 25 bronze disc meter, bronze bottom, HR-E with Itron in-line connector cable	Up to (996) meters every 30 days ARO
2	500	1" Recordall Model 70 bronze disc meter, bronze bottom, HR-E with Itron in-line connector cable	Up to (360) meters every 25 days ARO
3	100	2" Recordall Turbo Series Meter, HR-E with Itron in-line connector cable	Up to (12) meters every 30 days ARO
4	1	12" Recordall Turbo Series Meter, HR-E with Itron in-line connector cable	30 days ARO

These are our standard delivery terms. If awarded, Badger Meter looks forward to meeting the needs of Jefferson Parish.



CENTRALBIDDING
FROM CENTRAL AUCTION HOUSE

**5000132238 TWO (2) YEAR CONTRACT FOR THE SUPPLY OF
RESIDENTIAL WATER METERS & ASSEMBLIES FOR THE JEFFERSON
PARISH DEPARTMENT OF ENGINEERING.**
Jefferson Parish Government

Project documents obtained from www.CentralBidding.com

30-Sep-2020 10:31:57 AM



Bid Number 50 - 132238

TWO (2) YEAR CONTRACT FOR THE SUPPLY OF RESIDENTAL WATER METERS AND ASSEMBLIES FOR THE JEFFERSON PARISH DEPARTMENT OF ENGINEERING.

October 15, 2020 AT 2:00 PM

ATTENTION VENDORS!!!

Please review all pages and respond accordingly, complying with all provisions in the technical specifications and Jefferson Parish Instructions for Bidders and General Terms and Conditions. All bids must be received in the Purchasing Department by the bid due date and time.

**Jefferson Parish Purchasing Department
200 Derbigny Street
General Government Building, Suite 4400
Gretna, LA 70053
Donna Reamey
Dreamey@Jeffparish.net
504-364-2684**

Residential Water Meters Contract

Items Included in this Contract:

1. Positive Displacement Meters (Sizes $\frac{5}{8}$ " X $\frac{3}{4}$ ", 1")
2. Turbine Meter (2" & 12")

Contract Terms:

These specifications are prepared for a two (2) year supply of Water Meters for all Water Districts for the Parish of Jefferson.

Bonds:

Surety Bond: A bid bond will be required **with** bid submission in the amount of 5% of the total bid. Acceptable forms shall be limited to cashier's check, certified check, or surety bid bond. All sureties must be in original format (no copies). If submitting a bid online, vendor must submit an electronic bid bond through the respective online clearinghouse bond management system as indicated in the electronic bid solicitation on Central Auction House. No scanned paper copies of any bid bond will be accepted as part of the electronic bid submission.

Warranty:

Products shall be warranted that they are manufactured in accordance with the applicable material specifications and are free from defects in workmanship and materials. Any defective items sold under this contract shall be replaced at no cost to the purchaser.

General Specifications:

These specifications are prepared for a two (2) year supply of Water Meters for all Water Districts for the Parish of Jefferson.

Jefferson Parish reserves the right to purchase any quantity of units more or less than specified and/or as needed during the two (2) year period of the contract.

The bidder is not to pre-ship any quantity until authorized by purchase order.

The quantities shown on the proposal guide are approximate quantities to be acquired by Jefferson Parish over a two (2) year period. Actual usage will be on an "as needed" basis.

BID SPECIFICATIONS FOR BID # 50-132238

All pertinent technical specifications and literature may be required upon request. Should technical specifications and literature be requested, bidder(s) will be required to submit said technical specifications and literature within ten (10) days of the request.

Successful bidder will be allowed 120 days, from the date of contract execution, to stock and maintain sufficient quantities on hand to meet the needs of Jefferson Parish, vendor will ship requested quantities (as indicated on purchase order) within seven (7) calendar days.

Bid delivery shall include all freight and delivery costs to Jefferson Parish warehouse locations on the East and West Banks of Jefferson Parish.

Technical Specifications:

All meters shall be compatible to the **Itron ERT 100 W** automated meter reading system. All meter registers must be Itron ERT ready with the "Itron Inline Connector" included on the register. Meter registers must use an encoder technology with mechanical odometer. Pulse technology will not be accepted. Registers should be magnetic-driven, easily read with unobstructed number wheels. LCD displays are not accepted unless otherwise specified. Itron Inline Connectors shall be 5 feet in length for meters 1 inch and smaller and 25 feet in length for meters 2 inch and larger.

The encoder register shall send data in ASCII format (American Standard Code for Information Interchange) to the endpoint. The encoder register shall transmit the complete odometer wheel reading, with a minimum of 8 digits and all 8 positions. An 8-digit register identification number that has been factory set and never duplicated shall also be sent to the reading device. A locating chip or other suitable device shall be affixed in such a way that when the 100W Endpoint interrogates the encoder register, the microprocessor shall determine the true position of each odometer wheel, encode the reading and send it to the Endpoint. The locating device shall not make contact with the odometer wheel or any other part of the register in order to prevent wear and corrosion of said connection. The use of Optical Character Recognition or Light Emitting Diodes is not an acceptable means of providing odometer wheel position.

Meter register resolution shall be 8 dial type.

Meter manufacturers must guarantee the complete sealed register for a period of not less than ten (10) years for satisfactory operating performance and against fogging. If the sealed register fogs and/or does not operate satisfactorily, as determined by the Department of Water, the meter manufacturer shall replace the unit at no cost to the Jefferson Parish Water Department during the warranty period.

Each meter shall meet new meter accuracy standards during the first year of operation. The meter manufacturer must further guarantee all internal working meter parts for a period of not less than ten (10) years. During this period, measuring chambers shall meet the repaired meter accuracy standards of AWWA Manual M-6. Chambers which do not meet the aforementioned accuracy warranty shall be replaced by the manufacturer at no cost to the Jefferson Parish Water Department.

BID SPECIFICATIONS FOR BID # 50-132238

Group 1. Positive Displacement Meters (Sizes 5/8" x 3/4" & 1"):

Meters to be furnished shall meet or exceeds the American Water Works Associations Standards C-700-09 or latest revision.

Meters shall comply with the lead-free requirements as defined by NSF/ANSI Standard 61, Annex G (NSF 372) and 2014 provisions of the Safe Drinking Water Act.

Meters shall be nutating disc type and shall not exceed maximum number of nutations allowed under AWWA C-700-09. The thrust roller of the disc shall operate on a stainless steel roller.

The register assembly shall be permanently encased and rolled sealed in a stainless steel can with a glass lens. The glass lens must be heavy duty, scratch resistant, molded glass for readability, and shall be as near to unbreakable as possible.

The main case bottom cover shall be lead free bronze and attached with a minimum of four (4) stainless steel or bronze bolts of the cap screw type. Exterior trim bolts, nuts, and screws shall be bronze or stainless steel to insure long service life.

Laying lengths shall be as follows:

METER SIZE	LAYING LENGTH
5/8" x 3/4"	7-1/2"
1"	10-3/4"

Note: There can be no change in these measurements as new meters must fit in the same space as the existing installations.

Operating Characteristics

Meter Size	Low Flow (98.5% Min.)	Typical Operating Range	Maximum Continuous Flow	Pressure Loss (Not to Exceed)
5/8" X 3/4"	0.25 GPM	0.50 to 25 GPM	15 GPM	2.8 PSI @ 15 GPM
1"	0.75 GPM	1.25 to 70 GPM	50 GPM	6.5 PSI @ 50 GPM

Flow ratings shall be 25 GPM for 5/8" x 3/4" meters and 70 GPM for 1" meters.

Meters shall be a Badger Recordall® Disc Meter or an approved equal.

BID SPECIFICATIONS FOR BID # 50-132238

Group 2. Commercial Turbine Meters (Sizes 2" & 12"):

Turbine meters shall be magnetically driven through coupling of a magnet in the sealed register and a magnet within the main case which operates to transmit the revolutions of the turbine rotor to the sealed register. Turbine meters shall meet or exceed the most recent revision of the American Water Works Standard C-701-12 for Class II turbines.

To assure the turbine meter to be tamper resistant it will be necessary to have the sealed register secured to the main case cover and/or the rotor measuring assembly with a manufacturer installed stainless steel nut, bolt or screw. Jefferson Parish will not accept field modified or second party modified meters as meeting specifications. Locking pin, break off screw, or seal wires will not be acceptable as equal.

The meter manufacturer must guarantee the turbine (for all meter sizes) hermetically sealed registers for a period of not less than five (5) years for satisfactory operating performance and against fogging or other defects. All internal working parts including flow tube, rotor, radial bearings, thrust bearings and magnets shall be guaranteed for a period of not less than five (5) years at no extra cost to the Jefferson Parish Department of Water. These guarantees shall not apply to the mechanical failure or damages to meters as a result of external abuse, hot water or water quality.

Laying lengths shall be as follows:

METER SIZE	LAYING LENGTH
2"	10"
12"	19-11/16"

Note: There can be no change in these measurements as new meters must fit in the same space as the existing installations.

Operating Characteristics

Meter Size	Low Flow (95% Min.)	Typical Operating Range	Maximum Continuous Flow	Pressure Loss (Not to Exceed)
2"	2.5 GPM	4 to 310 GPM	200 GPM	3.1 PSI @ 200 GPM
12"	65 GPM	90 to 8800 GPM	6200 GPM	0.8 PSI @ 6200 GPM

Flow ratings shall be 310 GPM for 2" meters and 8800 GPM for 12" meters.

Meters shall be a Badger Recordall® Turbo Series Meter or an approved equal.

DATE: 9/30/2020
BID NO.: 50-00132238

INVITATION TO BID
THIS IS NOT AN ORDER

Page: 1

JEFFERSON PARISH

PURCHASING DEPARTMENT
P.O. BOX 9
GRETNA, LA. 70054-0009
504-364-2678

BUYER: DREAMEY@jeffparish.net

BIDS WILL BE RECEIVED IN THE WEST BANK PURCHASING DEPT, SUITE 4400, JEFFERSON PARISH GENERAL GOVERNMENT BUILDING, 200 DERBIGNY STREET, GRETNA, LA 70053 UNTIL 2:00 PM, 10/15/2020 AND PUBLICLY OPENED THEREAFTER.

For convenience, bidders may also submit bids in the East Bank Purchasing Department, Suite 404, Jefferson Parish Joseph S. Yenni Building, 1221 Elmwood Park Blvd., Jefferson LA 70123. However, if submitting bids on the day of bid opening, bidders must submit at the West Bank location only. All bids will be publicly opened at the West Bank location.

At no charge, bidders may also submit via Jefferson Parish's electronic procurement page by visiting www.jeffparishbids.net to register for this free site. Additional instructions are included in the text box highlighting electronic procurement.

LATE BIDS WILL NOT BE ACCEPTED

Unless submitting via online (see Page 3), each bid must be submitted in a sealed envelope bearing on the outside; the name of the Bidder, his address, and the name of the project for which the bid is submitted and the bid number.

NOTE: ONLY BIDS WRITTEN IN INK OR TYPEWRITTEN, AND PROPERLY SIGNED BY A MEMBER OF THE FIRM OR AUTHORIZED REPRESENTATIVE, WILL BE ACCEPTED. PENCIL AND/OR PHOTOSTATIC FIGURES OR SIGNATURES SHALL RESULT IN BID REJECTION.

INSTRUCTIONS FOR BIDDERS AND GENERAL CONDITIONS

THE FOLLOWING INSTRUCTIONS APPLY TO ALL BIDS

All bids submitted are subject to these instructions and general conditions and any special conditions and specifications contained herein, all of which are made part of this bid proposal reference. By submitting a bid, vendor agrees to comply with all provisions of Louisiana Law as well be in compliance with the Jefferson Parish Code of Ordinances, Louisiana Code of Ethics, applicable Jefferson Parish ethical standards and Jefferson Parish Resolution No. 113646 and/or Resolution No. 113647.

Jefferson Parish adheres to the Louisiana Code of Governmental Ethics, contained in Louisiana Revised Statutes Annotated, R.S. 42:1101, et seq. Vendor/Proposer by this submission, warrants that there are no "conflicts of interest" related to this procurement that would violate applicable Louisiana Law. Violation of the Louisiana Code of Governmental Ethics may result in rescission of contract, permit or licenses, and the imposition of fines and/or penalties, without contractual liability to the public in accordance with applicable law.

All vendors submitting bids should register as a Jefferson Parish vendor if not already yet registered. Registration forms may be downloaded from <http://purchasing.jeffparish.net> and by clicking on Vendor Information. Current W-9 forms with respective Tax Identification numbers and vendor applications may be submitted at any time; however, if your company is not registered and/or a current W-9 form is not on file, vendor registration is mandatory. Vendors may experience a delay in payment if your company is not a registered vendor with Jefferson Parish.

All quotations shall be based on F.O.B. Agency warehouse or job site, anywhere within the Parish as designated by the Purchasing Department. This provision does not apply to public works projects

JEFFERSON PARISH requires all products to be new (current) and all work must be performed according to standard practices for the project. Unless otherwise specified, no aftermarket parts will be accepted. Unless otherwise specified, all workmanship and materials must have at least one (1) year guaranty, in writing, from the date of delivery and/or acceptance of the project. Any deviations or alterations from the specifications must be indicated and/or supporting documentation supplied with bid submission.

Bidders should submit all questions in writing via email to the buyer's email address as indicated above, no later than Five (5) working days prior to the bid opening. Bid numbers should be mentioned in all requests. If submitting online, vendors may send questions via the E-Procurement site no later than Five (5) working days prior to the bid opening.

If this bid requires a pre-bid conference (see Additional Requirements section), bidders are advised that such conference will be held to allow bidders the opportunity to identify any discrepancies in the bid specifications and seek further clarification regarding instructions. The Purchasing Department will issue a written response to bidders' questions in the form of an Addendum. Please note that all official communication will be expressed in the form of an addendum.

Visit our website at [HTTP://PURCHASING.JEFFPARISH.NET](http://PURCHASING.JEFFPARISH.NET)

DATE: 9/30/2020

BID NO.: 50-00132238

Page: 2

All formal Addenda require written acknowledgement on the bid form by the bidder. Failure to acknowledge an Addendum on the bid form shall cause the bid to be rejected. JEFFERSON PARISH reserves the right to award bid to next lowest responsive and responsible bidder in this event.

JEFFERSON PARISH will accept one price for each item unless otherwise indicated. Two or more prices for one item will result in bid rejection. Bidders are required to complete, sign and return the bid form and/or complete and return the associated line item pricing forms as indicated. Vendors must not alter the bid forms. Doing so will cause the bid to be rejected.

A corporate resolution or written evidence of the individual signing the bid having such authority must be submitted with the bid. Failure to comply will cause bid to be rejected. For corporate entities, such written evidence may be a printout of the Louisiana Secretary of State's website listing the signatory as an officer. Such printout shall be included with the bid submission. Bids submitted by Owners or Sole Proprietorships must include certification that he or she owns the entity for which the bid is signed. This documentation must be submitted with the bid. Failure to do so will result in bid rejection.

NOTE: A sample corporate resolution can be downloaded from our website <http://purchasing.jeffparish.net> or you may provide your own document. A sample certification of sole proprietorship can also be downloaded from our website <http://purchasing.jeffparish.net> or you may provide your own document.

INSTRUCTIONS FOR BIDDERS AND GENERAL CONDITIONS

A. AWARD OF CONTRACT: JEFFERSON PARISH reserves the right to award contracts or place orders on a lump sum or individual item basis, or such combination, as shall in its judgment be in the best interest of JEFFERSON PARISH. Every contract or order shall be awarded to the LOWEST RESPONSIVE and RESPONSIBLE BIDDER, taking into consideration the CONFORMITY WITH THE SPECIFICATIONS and the DELIVERY AND/OR COMPLETION DATE. SPLIT AWARDS MADE TO SEVERAL VENDORS WILL ONLY BE GRANTED TO THOSE DEEMED RESPONSIVE AND RESPONSIBLE.

All bid prices shall remain valid for 45 days. Jefferson Parish and the lowest responsive and responsible bidder(s) by mutual written consent may mutually agree to extend the deadline for award by one (1) or more extensions of thirty (30) calendar days.

PROTESTS: Only those vendors that submit bids in response to this solicitation may protest any element of the procurement, in writing to the Director of the Purchasing Department. Written protest must be received within 48 hours of the release of the bid tabulation by the Purchasing Department. After consultation, the Parish Attorney's Office will then respond to protests in writing. (For more information, please see Chapter 2, Article VII, Division 2, Sec. 2-914.1 of the Jefferson Parish Code of Ordinances.)

PREFERENCE: Unless federal funding is directly spent by Jefferson Parish for this purchase, preference is hereby given to materials, supplies, and provisions produced, manufactured or grown in Louisiana, quality being equal to articles offered by competitors outside the state. "LSA - R.S. 38:2251-2261"

B. USE OF BRAND NAMES AND STOCK NUMBERS: Where brand names and stock numbers are specified, it is for the purpose of establishing certain minimum standards of quality. Bids may be submitted for products of equal quality, provided brand names and stock numbers are specified. Complete product data may be required prior to award.

C. CANCELLATION OF CONTRACT: JEFFERSON PARISH reserves the right to cancel all or any part if not shipped promptly. No charges will be allowed for parking or cartage unless specified in quotation. The order must not be filled at a higher price than quoted. JEFFERSON PARISH reserves the right to cancel any contract at anytime and for any reason by issuing a THIRTY (30) day written notice to the contractor.

For good cause and as consideration for executing a contract with Jefferson Parish, vendor conveys, sells, assigns and transfers to Jefferson Parish or its assigns all rights, title and interest in and to all causes of action it may now or hereafter acquire under the antitrust laws of the United States and the State of Louisiana, relating to the particular good or services purchased or acquired by Jefferson Parish.

D. PRICES: Jefferson Parish is exempt from paying sales tax under LSA-R.S. 47:301 (8)(c). All prices for purchases by Jefferson Parish of supplies and materials shall be quoted in the unit of measure specified and unless otherwise specified, shall be exclusive of state and Parish taxes. The price quoted for work shall be stated in figures. In the event there is a difference in unit prices and totals, the unit price shall prevail.

Quantities listed are for bidding purposes only. Actual requirements may be more or less than quantities listed.

Bidders are not to exclude from participation in, deny the benefits of, or subject to discrimination under any program or activity, any person in the United States on the grounds of race, color, national origin, or sex; nor discriminate on the basis of age under the Age Discrimination Act of 1975, or with respect to an otherwise qualified handicapped individual as provided in Section 504 of the Rehabilitation Act of 1973, or on the basis of religion, except that any exemption from such prohibition against discrimination on the basis of religion as provided in the Civil Rights Act of 1964, or Title VI and VII of the Act of April 11, 1968, shall also apply. This assurance includes compliance with the administrative requirements of the Revenue Sharing final handicapped discrimination provisions contained in Section 51.55 (c), (d), (e), and (k)(5) of the Regulations. New construction or renovation projects must comply with Section 504 of the 1973 Rehabilitation Act, as amended, in accordance with the American National Standard Institute's specifications (ANSI A17.1-1961).

Jefferson Parish and its partners as the recipients of federal funds are fully committed to awarding a contract(s) to firm(s) that will provide high quality services and that are dedicated to diversity and to containing costs. Thus, Jefferson Parish strongly encourages the involvement of minority and/or woman-owned business enterprises (DBE's, including MBE's, WBE's and SBE's) to stimulate participation in procurement and assistance programs.

DATE: 9/30/2020

BID NO.: 50-00132238

Page: 3

INSTRUCTIONS FOR BIDDERS AND GENERAL CONDITIONS

The purpose and intention of this invitation to bid is to afford all suppliers an equal opportunity to bid on all construction, maintenance, repair, operating supplies and/or equipment listed in this bid proposal. JEFFERSON PARISH WILL ACCEPT ONE BID ONLY FROM EACH VENDOR. Items bid must meet specifications.

Advertised bids will be tabulated and a copy of the tabulation will be forwarded to each responding bidder.

IN ACCORDANCE WITH STATE REGULATIONS JEFFERSON PARISH OFFERS ELECTRONIC PROCUREMENT TO ALL VENDORS

This electronic procurement system allows vendors the convenience of reviewing and submitting bids online.

This is a secure site and authorized personnel have limited read access only. Bidders are encouraged to submit electronically using this free service; while the website accepts various file types, one single PDF file containing all appropriate and required bid documents is preferred. Bidders submitting uploaded images of bid responses are solely responsible for clarity. If uploaded images/documents are not legible, then bidder's submission will be rejected. Please note all requirements contained in this bid package for electronic bid submission.

Please visit our E-Procurement Page at www.jeffparishbids.net to register and view Jefferson Parish solicitations. For more information, please visit the Purchasing Department page at <http://purchasing.jeffparish.net>.

The general specifications for construction projects and the purchase of materials, services and/or supplies are those adopted by the JEFFERSON PARISH Council by Resolution No. 113646 or 113647 dated 12/09/09. The general conditions adopted by this resolution shall be considered as much a part of this document as if they were written wholly herein. A copy may be obtained from the Office of the Parish Clerk, Suite 6700, Jefferson Parish General Government Building, 200 Derbigny Street, Gretna, LA 70053. You may also obtain a copy by visiting the Purchasing Department webpage at <http://purchasing.jeffparish.net> and clicking on Online Forms.

ADDITIONAL REQUIREMENTS FOR THIS BID

PLEASE MATCH THE NUMBERS PRINTED IN THIS BOX WITH THE CORRESPONDING INSTRUCTIONS BELOW.

10,11,12,13,15, 17

1. All bidders must attend the MANDATORY pre-bid conference and will be required to sign in and out as evidence of attendance. In accordance with LSA R.S. 38:2212(I), all prospective bidders shall be present at the beginning of the MANDATORY pre-bid conference and shall remain in attendance for the duration of the conference. Any prospective bidder who fails to attend the conference or remain for the duration shall be prohibited from submitting a bid for the project.
2. Attendance to this pre-bid conference is optional. However, failure to attend the pre-bid conference shall not relieve the bidder of responsibility for information discussed at the conference. Furthermore, failure to attend the pre-bid conference and inspection does not relieve the successful bidder from the necessity of furnishing materials or performing any work that may be required to complete the work in accordance with the specification with no additional cost to the owner.
3. Contractor must hold current applicable JEFFERSON PARISH licenses with the Department of Inspection and Code Enforcement. Contractor shall obtain any and all permits required by the JEFFERSON PARISH Department of Inspection and Code Enforcement. The contractor shall be responsible for the payment of these permits. All permits must be obtained prior to the start of the project. Contractor must also hold any and all applicable Federal and State licenses. Contractor shall be responsible for the payment of these permits and shall obtain them prior to the start of the project.
4. A LA State Contractor's License will be required in accordance with LSA R.S. 37-2150 et. seq. and such license number will be shown on the outside of the bid envelope. Failure to comply will cause the bid to be rejected. Additionally if submitting the bid electronically, then the license number must be entered in the appropriate field in the Electronic Procurement system. Failure to comply will cause the bid to be rejected.
5. It is the bidder's responsibility to visit the job site and evaluate the job before submitting a bid.
6. Job site must be clean and free of all litter and debris daily and upon completion of the contract. Passageways must be kept clean and free of material, equipment, and debris at all times. Flammable material must be removed from the job site daily because storage will not be permitted on the premises. Precautions must be exercised at all times to safeguard the welfare of JEFFERSON PARISH and the general public.

DATE: 9/30/2020

BID NO.: 50-00132238

Page: 4

INSTRUCTIONS FOR BIDDERS AND GENERAL CONDITIONS

7. PUBLIC WORKS BIDS: All awards for public works in excess of \$5,000.00 will be reduced to a formal contract which shall be recorded at the contractor's expense with the Clerk of Court and Ex-Officio Recorder of Mortgages for the Parish of Jefferson. A price list of recordation costs may be obtained from the Clerk of Court and Ex-Officio Recorder of Mortgages for the Parish of Jefferson. All awards in excess of \$25,000.00 will require both a performance and a payment bond. Unless otherwise stated in the bid specifications, the performance bond requirements shall be 100% of the contract price. Unless otherwise state in the bid specifications, the payment bond requirements shall be 100% of the contract price. Both bonds shall be supplied at the signing of the contract.
8. NON-PUBLIC WORKS BIDS: A performance bond will be required for this bid. The amount of the bond will be 100% of the contract price unless otherwise indicated in the specifications. The performance bond shall be supplied at the signing of the contract.
9. NON-PUBLIC WORKS BIDS: A payment bond will be required for this bid. The amount of the bond will be 100% of the contract price unless otherwise indicated in the specifications. The payment bond shall be supplied at the signing of the contract.
10. All bidders must comply with the requirements stated in the attached "Standard Insurance Requirements" sheet attached to this bid solicitation. Failure to comply with this instruction will result in bid rejection.
11. A bid bond will be required with bid submission in the amount of 5% of the total bid, unless otherwise stated in the bid specifications. Acceptable forms shall be limited to cashier's check, certified check, or surety bid bond. All sureties must be in original format (no copies) If submitting a bid online, vendors must submit an electronic bid bond through the respective online clearinghouse bond management system(s) as indicated in the electronic bid solicitation on Central Auction House. No scanned paper copies of any bid bond will be accepted as part of the electronic bid submission.
12. This is a requirements contract to be provided on an as needed basis. JEFFERSON PARISH makes no representations on warranties with regard to minimum guaranteed quantities unless otherwise stated in the bid specifications.
13. Freight charges should be included in total cost when quoting. If not quoted FOB DELIVERED, freight must be quoted as a separate item. Bid may be rejected if not quoted FOB DELIVERED or if freight charges are not indicated on bid form.
14. PUBLIC WORKS BIDS - Completed, Signed and Properly Notarized Affidavits Required; This applies to all solicitations for construction, alteration or demolition of public buildings or projects, in conformity with the provisions contained in LSA-RS 38:2212.9, LSA-RS 38:2212.10, LSA-RS 38:2224, and Sec 2-923.1 of the Jefferson Parish Code of Ordinances. For bidding purposes, all bidders must submit with bid submission COMPLETED, SIGNED and PROPERLY NOTARIZED Affidavits, including: Non-Conviction Affidavit, Non-Collusion Affidavit, Campaign Contribution Affidavit, Debt Disclosures Affidavit and E-Verify Affidavit. For the convenience of vendors, all affidavits have been combined into one form entitled PUBLIC WORKS BID AFFIDAVIT. This affidavit must be submitted in its original format, and without material alteration, in order to be compliant and for the bid to be considered responsive. A scanned copy of the completed, signed and properly notarized affidavit may be submitted with the bid, however, the successful bidder must submit the original affidavit in its original format and without material alteration upon contract execution. Failure to comply will result in the bid submission being rejected as non-responsive. The Parish reserves the right to award bid to the next lowest responsive and responsible bidder in this event.
15. NON PUBLIC WORK BIDS - Completed, Signed and Properly Notarized Affidavits Required in conformity with the provisions contained in LSA - RS 38:2224 and Sec 2-923.1 of the Jefferson Parish Code of Ordinances. For bidding purposes, all bidders must submit with bid submission COMPLETED, SIGNED and PROPERLY NOTARIZED Affidavits, including: Non-Collusion Affidavit, Debt Disclosures Affidavit and Campaign Contribution Affidavit. For the convenience of vendors, all affidavits have been combined into one form entitled NON PUBLIC WORKS BID AFFIDAVIT. This affidavit must be submitted in its original format, and without material alteration, in order to be compliant and for the bid to be considered responsive. A scanned copy of the completed, signed and properly notarized affidavit may be submitted with the bid, however, the successful bidder must submit the original affidavit in its original format and without material alteration upon contract execution. Failure to comply will result in the bid submission being rejected as non-responsive. The Parish reserves the right to award bid to the next lowest responsive and responsible bidder in this event.
16. The ensuing contract for this bid solicitation may be eligible for FEMA reimbursement and/or Federal funding/reimbursement. As such, the referenced appendix will be applicable accordingly and shall be considered a part of the bid documents. All applicable certifications must be duly completed, signed and submitted with bid submission. Failure to submit applicable certifications with bid submission will result in bid rejection.
17. For this project, the Contractor shall not pay any state or local sales or use taxes on materials and equipment which are affixed and made part of the immovable property of the project or which permanently incorporated in the project (hereinafter referred to as "applicable materials and equipment"). All purchases of applicable materials or equipment shall be made by the contractor on behalf of and as the agent of Jefferson Parish (Owner), a political subdivision of the State of Louisiana. No state and local sales and use taxes are owned on applicable materials and equipment under the provisions of Act 1029 of the 1991 Regular Session - Louisiana Revised Statute 47:301(8)(c). Owner will furnish contractor a certificate form which certifies that Owner is not required to pay such state or local sales and use taxes, and contractor shall furnish a copy of such certificate to all vendors or suppliers of the applicable materials and equipment

It shall be the duty of every parish officer, employee, department, agency, special district, board, and commission: and the duty of every contractor, subcontractor, and licensee of the parish, and the duty of every applicant for certification of eligibility for a parish contract or program, to cooperate with the Inspector General in any investigation, audit, inspection, performance review, or hearing pursuant to JPCO 2-155.10(19). By signing this document, every corporation, partnership, or person contracting with PARISH, whether by cooperative endeavor, intergovernmental agreement, bid, proposal, application or solicitation for a parish contract, and every application for certification of eligibility for a parish contract or program, attests that it understands and will abide by all provisions of JPCO 2-155.10.

See Page 1 for Conflicts of Interest Statement

DATE: 9/30/2020

Page: 5

BID NO.: 50-00132238

BID FORM
Non Public Works

All Public Work Projects are required to use the Louisiana Uniform Public Work Bid Form

All prices must be held firm unless an escalation provision is requested in this bid. Jefferson Parish will allow one escalation during the term of the contract, which may not exceed the U.S. Bureau of Labor Statistics National Index for all Urban Consumers, unadjusted 12 month figure. The most recently published figure issued at the time an adjustment is requested will be used. A request must be made in writing by the vendor, and the escalation will only be applied to purchases made after the request is made.

Are you requesting an escalation provision?

YES _____ NO X

MAXIMUM ESCALATION PERCENTAGE REQUESTED _____%

INITIAL BID PRICES WILL REMAIN FIRM THROUGH THE DATE OF October 15, 2022

For the purposes of comparison of bids when an escalation provision is requested, Jefferson Parish will apply the maximum escalation percentage quoted by the bidder to the period to which it is applied in the bid. The initial price and the escalation will be used to calculate the total bid price. It will be assumed, for comparison of prices only, that an equal amount of material or labor is purchased each month throughout the entire contract.

DELIVERY: FOB JEFFERSON PARISH

INDICATE DELIVERY DATE ON EQUIPMENT AND SUPPLIES

please see attached delivery schedule

LOUISIANA CONTRACTOR'S LICENSE NO.: (if applicable)

N/A, supply contract

THIS SECTION MUST BE COMPLETED BY BIDDER:

FIRM NAME: Badger Meter, Inc.

ADDRESS: 4545 West Brown Deer Road

CITY, STATE: Milwaukee, WI ZIP: 53223

TELEPHONE: (800) 876-3837 ext. 12728 FAX: (414) 371- 5891

EMAIL ADDRESS: bids@badgermeter.com

In the event that addenda are issued with this bid, bidders MUST acknowledge all addenda on the bid form. Bidder must acknowledge receipt of an addendum on the bid form as indicated. Failure to acknowledge any addendum on the bid form will result in bid rejection.

Acknowledge Receipt of Addenda: NUMBER: _____

NUMBER: _____

NUMBER: _____

NUMBER: _____

TOTAL PRICE OF ALL BID ITEMS: \$ 408,421.25

AUTHORIZED SIGNATURE: Korrine L Fleming

Korrine L Fleming

Printed Name

TITLE: Assistant Secretary

SIGNING INDICATES YOU HAVE READ AND COMPLY WITH THE INSTRUCTIONS AND CONDITIONS.

NOTE: All bids should be returned with the BID NUMBER and BID OPENING DATE indicated on the outside of the envelope submitted to the Purchasing Department.

SEALED BID

[illegible]

Due to continuous improvements and redesign of our products and technology solutions, we reserve the right to provide our newest product solutions as an alternative to the proposed products provided they are in conformance with the requirements of the specifications and do not exceed the prices quoted.

CORPORATE RESOLUTION

EXCERPT FROM MINUTES OF MEETING OF THE BOARD OF DIRECTORS OF

INCORPORATED.

AT THE MEETING OF DIRECTORS OF _____
INCORPORATED, DULY NOTICED AND HELD ON _____,
A QUORUM BEING THERE PRESENT, ON MOTION DULY MADE AND SECONDED. IT
WAS:

RESOLVED THAT _____, BE AND IS HEREBY
APPOINTED, CONSTITUTED AND DESIGNATED AS AGENT AND ATTORNEY-IN-
FACT OF THE CORPORATION WITH FULL POWER AND AUTHORITY TO ACT ON
BEHALF OF THIS CORPORATION IN ALL NEGOTIATIONS, BIDDING, CONCERNS
AND TRANSACTIONS WITH THE PARISH OF JEFFERSON OR ANY OF ITS AGENCIES,
DEPARTMENTS, EMPLOYEES OR AGENTS, INCLUDING BUT NOT LIMITED TO, THE
EXECUTION OF ALL BIDS, PAPERS, DOCUMENTS, AFFIDAVITS, BONDS, SURETIES,
CONTRACTS AND ACTS AND TO RECEIVE ALL PURCHASE ORDERS AND NOTICES
ISSUED PURSUANT TO THE PROVISIONS OF ANY SUCH BID OR CONTRACT, THIS
CORPORATION HEREBY RATIFYING, APPROVING, CONFIRMING, AND ACCEPTING
EACH AND EVERY SUCH ACT PERFORMED BY SAID AGENT AND ATTORNEY-IN-
FACT.

I HEREBY CERTIFY THE FOREGOING TO BE
A TRUE AND CORRECT COPY OF AN
EXCERPT OF THE MINUTES OF THE ABOVE
DATED MEETING OF THE BOARD OF
DIRECTORS OF SAID CORPORATION, AND
THE SAME HAS NOT BEEN REVOKED OR
RESCINDED.

SECRETARY-TREASURER

DATE



4545 W Brown Deer Road
PO Box 245036
Milwaukee, Wisconsin 53224-9536
414-355-0400 | 800-876-3837
www.badgermeter.com

CERTIFICATION OF SIGNATURE AUTHORITY

I certify as follows:

By Board Resolution adopted by the Board of Directors of Badger Meter, Inc. and in full force and effect as of this date:

The following *elected executive officers* are, among other things, hereby authorized to execute, amend, and cancel bids and contracts for the sale of products, distributor and representative agreements, bid bonds, surety bonds, contracts, leases and certain other legally binding documents in the ordinary course of business, in the name of Badger Meter, Inc. (or Badger Meter, Inc. dba National Meter & Automation):

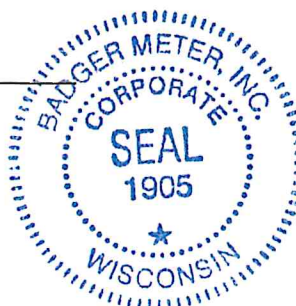
William R.A. Bergum	Vice President – General Counsel & Secretary
Kenneth C. Bockhorst	President and Chief Executive Officer
Kimberly K. Stoll	Vice President – Sales & Marketing
Robert A. Wrocklage	Sr. Vice President – Finance, CFO, and Treasurer

The following *elected non-executive officers* are hereby authorized to execute, amend, and cancel bids, bid-related contracts and documents, requests for proposals and quotes, an all other bid-related documentation in the name of Badger Meter, Inc. (or Badger Meter, Inc. db a National Meter Automation)

Wayne Dennis	Assistant Secretary	Sr. Director – International Sales and Marketing and Business Development
Charla D. Dury	Assistant Secretary	Project Manager – Bid and Contract Administration
Frank J. Fenton	Assistant Secretary	Director – Utility Sales
Korrine L. Fleming	Assistant Secretary	Manager – Bid and Contract Admin.
Jessica L. Kent	Assistant Secretary	Senior Project Manager – Bids and Contract Administration
Nathanial R. Hawley	Assistant Secretary	Director – Distribution Administration
Rebecca L. Loomans	Assistant Secretary	Senior Project Manager – Bids and Contract Administration
Benjamin E. Loomis	Assistant Secretary	Milwaukee Credit Manager
Pamela G. Stokke-Ceci	Assistant Secretary	Assistant General Counsel and Director
Christopher D. Washington	Assistant Secretary	Senior Proposal Lead

October 14, 2020

Date



BY:

William R.A. Bergum
Vice President – General Counsel & Secretary
Badger Meter, Inc.

Non-Public Works Bid Affidavit Instructions

- **Affidavit is supplied as a courtesy to Affiants, but it is the responsibility of the affiant to insure the affidavit they submit to Jefferson Parish complies, in both form and content, with federal, state and parish laws.**
- **Affidavit must be signed by an authorized representative of the entity or the affidavit will not be accepted.**
- **Affidavit must be notarized or the affidavit will not be accepted.**
- **Notary must sign name, print name, and include bar/notary number, or the affidavit will not be accepted.**
- **Affiant MUST select either A or B when required or the affidavit will not be accepted.**
- **Affiants who select choice A must include an attachment or the affidavit will not be accepted.**
- **If both choice A and B are selected, the affidavit will not be accepted.**
- **Affidavit marked N/A will not be accepted.**
- **It is the responsibility of the Affiant to submit a new affidavit if any additional campaign contributions are made after the affidavit is executed but prior to the time the council acts on the matter.**

Instruction sheet may be omitted when submitting the affidavit

Non-Public Works Bid

AFFIDAVIT

STATE OF Wisconsin

PARISH/COUNTY OF Milwaukee

BEFORE ME, the undersigned authority, personally came and appeared: Korrine L. Fleming, (Affiant) who after being by me duly sworn, deposed and said that he/she is the fully authorized Assistant Secretary of Badger Meter, Inc. (Entity), the party who submitted a bid in response to Bid Number 50-132238, to the Parish of Jefferson.

Affiant further said:

Campaign Contribution Disclosures

(Choose A or B, if option A is indicated please include the required attachment):

Choice A _____ Attached hereto is a list of all campaign contributions, including the date and amount of each contribution, made to current or former elected officials of the Parish of Jefferson by Entity, Affiant, and/or officers, directors and owners, including employees, owning 25% or more of the Entity during the two-year period immediately preceding the date of this affidavit or the current term of the elected official, whichever is greater. Further, Entity, Affiant, and/or Entity Owners have not made any contributions to or in support of current or former members of the Jefferson Parish Council or the Jefferson Parish President through or in the name of another person or legal entity, either directly or indirectly.

Choice B X there are **NO** campaign contributions made which would require disclosure under Choice A of this section.

Debt Disclosures

(Choose A or B, if option A is indicated please include the required attachment):

Choice A _____ Attached hereto is a list of all debts owed by the affiant to any elected or appointed official of the Parish of Jefferson, and any and all debts owed by any elected or appointed official of the Parish to the Affiant.

Choice B X There are **NO** debts which would require disclosure under Choice A of this section.

Affiant further said:

That Affiant has employed no person, corporation, firm, association, or other organization, either directly or indirectly, to secure the public contract under which he received payment, other than persons regularly employed by the Affiant whose services in connection with the construction, alteration or demolition of the public building or project or in securing the public contract were in the regular course of their duties for Affiant; and

[The remainder of this page is intentionally left blank.]

That no part of the contract price received by Affiant was paid or will be paid to any person, corporation, firm, association, or other organization for soliciting the contract, other than the payment of their normal compensation to persons regularly employed by the Affiant whose services in connection with the construction, alteration or demolition of the public building or project were in the regular course of their duties for Affiant.

Fleming

Signature of Affiant

Korrine L. Fleming

Printed Name of Affiant

SWORN AND SUBSCRIBED TO BEFORE ME

ON THE 14th DAY OF October, 20 20.

Chris Washington
Notary Public

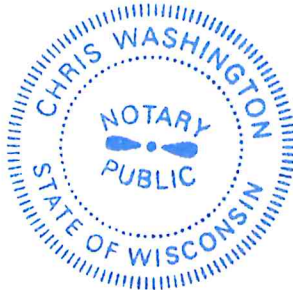
Chris Washington

Printed Name of Notary

223778

Notary/Bar Roll Number

My commission expires January 18, 2022.



STANDARD INSURANCE REQUIREMENTS FOR BIDDING PURPOSES

All required insurance under this bid shall conform to Jefferson Parish Resolution No. 113646 or No. 113647, as applicable. Contractors may not commence any work under any ensuing contract unless and until all required insurance and associated evidentiary requirements thereto have been met, along with any additional specifications contained in the **Invitation to Bid**. Except as where otherwise precluded by law, the Parish Attorney or his designee, with the concurrence of the Director of Risk Management or his designee, may agree on a case-by-case basis, to deviate from Jefferson Parish's standard insurance requirements, as provided in this Section. Vendors requesting deviation therefrom shall submit such requests in writing, along with compelling substantiation, to the Purchasing Department prior to the bid's due date. Any changes to the insurance requirements will be reflected in the bid specifications and addenda. Prior to contract execution and at all times thereafter during the term of such contract, contractors must provide and continuously maintain all coverages as required by the foregoing Resolutions, and the contract documents. Failure to do so shall be grounds for suspension, discontinuation or termination of the contract.

For bidding purposes, bidders must submit with bid submission a current (valid) insurance certificate evidencing the required coverages. Failure to comply will cause bid to be rejected. The current insurance certificate will be used for proof of insurance at time of evaluation. Thereafter, and prior to contract execution, the low bidder will be required to provide final insurance certificates to the Parish which shall name **the Jefferson Parish, its Districts Departments and Agencies under the direction of the Parish President and the Parish Council** as additional insureds regarding negligence by the contractor for the Commercial General Liability and the Comprehensive Automobile Liability policies. Additionally, said certificates should reflect the name of the Parish Department receiving goods and services and reference the respective Jefferson Parish bid number.

JEFFERSON PARISH REQUIRED STANDARD INSURANCE

☐ **WORKER'S COMPENSATION INSURANCE**

As required by Louisiana State Statute, exception; Employer's Liability, Section B shall be \$1,000,000 per occurrence when Work is to be over water and involves maritime exposures to cover all employees not covered under the State Worker's Compensation Act, otherwise this limit shall be no less than \$500,000 per occurrence.

Note: If your company is not required by law to carry workmen's compensation insurance, i.e. not a Louisiana company, sole employee of the company, then bidders must request a workmen's compensation insurance declaration affidavit prior to the bid opening date. This insurance declaration affidavit must be fully completed, signed, properly notarized and submitted with the bid. A scanned copy may be submitted with the bid; however, the successful bidder must submit the original affidavit in its original format and without material alteration upon contract execution. Failure to comply will result in the bid submission being

rejected as non-responsive. The Parish reserves the right to award bid to the next lowest responsive and responsible bidder in this event.

☐ **COMMERCIAL GENERAL LIABILITY**

Shall provide limits not less than the following: \$1,000,000.00 Combined Single Limit per Occurrence for bodily injury and property damage.

☐ **COMPREHENSIVE AUTOMOBILE LIABILITY**

Bodily injury liability \$1,000,000.00 each person; \$1,000,000.00 each occurrence.
Property Damage Liability \$1,000,000.00 each occurrence.

Note: This category may be omitted if bidders do not/will not utilize company vehicles for the project or do not possess company vehicles. Bidder must request an automobile insurance declaration affidavit prior to the bid opening date. This insurance declaration affidavit must be fully completed, signed, properly notarized and submitted with the bid. A scanned copy of the completed, signed and properly notarized affidavit may be submitted with the bid; however, the successful bidder must submit the original affidavit in its original format and without material alteration upon contract execution. Failure to comply will result in the bid submission being rejected as non-responsive. The Parish reserves the right to award bid to the next lowest responsive and responsible bidder in this event.

DEDUCTIBLES - The Parish Attorney with concurrence of the Director of Risk Management have waived the deductible section of the Terms and Conditions for all Invitations to Bid, until further notice.

UMBRELLA LIABILITY COVERAGE

An umbrella policy or excess may be used to meet minimum requirements.

FOR CONSTRUCTION AND RENOVATION PROJECTS:

The following are required unless otherwise specified in the bid. Such insurance is due upon contract execution.

1) **OWNER'S PROTECTIVE LIABILITY**

To be for the same limits of liability for bodily injury and property damage liability established for commercial general liability.

2) **BUILDER'S RISK INSURANCE**

The contractor shall maintain Builder's Risk Insurance at his own expense to insure both the owner (Parish of Jefferson) and contractor as their interest may appear.



CERTIFICATE OF LIABILITY INSURANCE

DATE (MM/DD/YYYY)
12/31/2019

THIS CERTIFICATE IS ISSUED AS A MATTER OF INFORMATION ONLY AND CONFERS NO RIGHTS UPON THE CERTIFICATE HOLDER. THIS CERTIFICATE DOES NOT AFFIRMATIVELY OR NEGATIVELY AMEND, EXTEND OR ALTER THE COVERAGE AFFORDED BY THE POLICIES BELOW. THIS CERTIFICATE OF INSURANCE DOES NOT CONSTITUTE A CONTRACT BETWEEN THE ISSUING INSURER(S), AUTHORIZED REPRESENTATIVE OR PRODUCER, AND THE CERTIFICATE HOLDER.

IMPORTANT: If the certificate holder is an ADDITIONAL INSURED, the policy(ies) must have ADDITIONAL INSURED provisions or be endorsed. If SUBROGATION IS WAIVED, subject to the terms and conditions of the policy, certain policies may require an endorsement. A statement on this certificate does not confer rights to the certificate holder in lieu of such endorsement(s).

PRODUCER Hays Companies 1200 North Mayfair Road, Suite 100 Milwaukee, WI 53226	1-414-443-0000	CONTACT NAME: PHONE (A/C, No, Ext): FAX (A/C, No): E-MAIL ADDRESS:
INSURED Badger Meter, Inc. 4545 West Brown Deer Road Milwaukee, WI 53223		INSURER(S) AFFORDING COVERAGE INSURER A: PHOENIX INS CO INSURER B: TRAVELERS PROP CAS CO OF AMER INSURER C: CONTINENTAL INS CO INSURER D: ACCIDENT FUND INS CO OF AMER INSURER E: INSURER F:
		NAIC # 25623 25674 35289 10166

COVERAGES

CERTIFICATE NUMBER: 58193991

REVISION NUMBER:

THIS IS TO CERTIFY THAT THE POLICIES OF INSURANCE LISTED BELOW HAVE BEEN ISSUED TO THE INSURED NAMED ABOVE FOR THE POLICY PERIOD INDICATED. NOTWITHSTANDING ANY REQUIREMENT, TERM OR CONDITION OF ANY CONTRACT OR OTHER DOCUMENT WITH RESPECT TO WHICH THIS CERTIFICATE MAY BE ISSUED OR MAY PERTAIN, THE INSURANCE AFFORDED BY THE POLICIES DESCRIBED HEREIN IS SUBJECT TO ALL THE TERMS, EXCLUSIONS AND CONDITIONS OF SUCH POLICIES. LIMITS SHOWN MAY HAVE BEEN REDUCED BY PAID CLAIMS.

INSR LTR	TYPE OF INSURANCE	ADDL INSD	SUBR WVD	POLICY NUMBER	POLICY EFF (MM/DD/YYYY)	POLICY EXP (MM/DD/YYYY)	LIMITS
A	<input checked="" type="checkbox"/> COMMERCIAL GENERAL LIABILITY <input type="checkbox"/> CLAIMS-MADE <input checked="" type="checkbox"/> OCCUR GEN'L AGGREGATE LIMIT APPLIES PER: <input checked="" type="checkbox"/> POLICY <input type="checkbox"/> PRO-JECT <input type="checkbox"/> LOC OTHER:			Y660 268J2023 PHX 20	01/01/20	01/01/21	EACH OCCURRENCE \$ 1,000,000 DAMAGE TO RENTED PREMISES (Ea occurrence) \$ 300,000 MED EXP (Any one person) \$ 10,000 PERSONAL & ADV INJURY \$ 1,000,000 GENERAL AGGREGATE \$ 4,000,000 PRODUCTS - COMP/OP AGG \$ 2,000,000 \$
B	<input checked="" type="checkbox"/> AUTOMOBILE LIABILITY <input checked="" type="checkbox"/> ANY AUTO <input type="checkbox"/> OWNED AUTOS ONLY <input type="checkbox"/> SCHEDULED AUTOS <input checked="" type="checkbox"/> HIRED AUTOS ONLY <input checked="" type="checkbox"/> NON-OWNED AUTOS ONLY			810 2L694073 20 14	01/01/20	01/01/21	COMBINED SINGLE LIMIT (Ea accident) \$ 1,000,000 BODILY INJURY (Per person) \$ BODILY INJURY (Per accident) \$ PROPERTY DAMAGE (Per accident) \$ \$
C	<input checked="" type="checkbox"/> UMBRELLA LIAB <input checked="" type="checkbox"/> OCCUR <input type="checkbox"/> EXCESS LIAB <input type="checkbox"/> CLAIMS-MADE DED <input checked="" type="checkbox"/> RETENTION \$ 10,000			6076540927	01/01/20	01/01/21	EACH OCCURRENCE \$ 5,000,000 AGGREGATE \$ 5,000,000 \$
D	WORKERS COMPENSATION AND EMPLOYERS' LIABILITY ANY PROPRIETOR/PARTNER/EXECUTIVE OFFICER/MEMBER EXCLUDED? (Mandatory in NH) If yes, describe under DESCRIPTION OF OPERATIONS below		N/A	1400014895	01/01/20	01/01/21	<input checked="" type="checkbox"/> PER STATUTE <input type="checkbox"/> OTH-ER E.L. EACH ACCIDENT \$ 1,000,000 E.L. DISEASE - EA EMPLOYEE \$ 1,000,000 E.L. DISEASE - POLICY LIMIT \$ 1,000,000

DESCRIPTION OF OPERATIONS / LOCATIONS / VEHICLES (ACORD 101, Additional Remarks Schedule, may be attached if more space is required)

CERTIFICATE HOLDER**CANCELLATION**For Sample Use Only
For Supply Only Contracts

SHOULD ANY OF THE ABOVE DESCRIBED POLICIES BE CANCELLED BEFORE THE EXPIRATION DATE THEREOF, NOTICE WILL BE DELIVERED IN ACCORDANCE WITH THE POLICY PROVISIONS.

AUTHORIZED REPRESENTATIVE



JEFFERSON PARISH

DEPARTMENT OF PURCHASING

CYNTHIA LEE SHENG
PARISH PRESIDENT

RENNY SIMNO
DIRECTOR

September 2020

Changes to Jefferson Parish Bidding Information

The Jefferson Parish Purchasing Department would like to make vendors aware of the following changes:

Total Bid Price Must Include the Cost of Naming Jefferson Parish as Additional Insured:

Bidder acknowledges that Bidder recovered the cost of any required insurance in the contract price as required by La.R.S. 9:2780.1 and that Bidder recovered any such cost for the purposes of insuring an obligation to indemnify Jefferson Parish, defend Jefferson Parish, or hold Jefferson Parish harmless and that Bidder's indemnity liability is limited to the amount of the proceeds that are payable under the insurance policy or policies that Bidder has obtained.

Electronic Procurement: Beginning November 1, 2020, Jefferson Parish will no longer accept manual bid submissions; and will only accept bid submissions electronically via our e-Procurement system, Central Bidding. Central Bidding can be accessed by visiting either www.centralbidding.com or www.jeffparishbids.net. All bidders will be required to register with Central Bidding. Jefferson Parish vendors are able to register for free by accessing the following link:
<https://www.centrauctionhouse.com/registration.php>.

Probable Construction Cost: Per Jefferson Parish Administrative Policy, the probable construction cost is not revealed in the Jefferson Parish Bidding Documents. Jefferson Parish Administrative Policy has changed and a range of the probable construction cost will be stated in the Jefferson Parish bidding document, entitled Important Notice to All Bidders – Bid Requirements. Per Louisiana Public Bid Law, the probable construction cost will be read at the bid opening.

Insurance Requirement: All bidders must provide proof of valid insurance in the required amounts as stated in the Standard Insurance Requirements for bidding purposes. Failure to provide the proof of valid insurance in all of the required coverage amounts will result in bid rejection.

GENERAL GOVERNMENT BLDG. – 200 DERBIGNY ST., SUITE 4400, GRETN, LA 70053
OFFICE 504.364.2678

JOSEPH S. YENNI BLDG. – 1221 ELMWOOD PARK BLVD., SUITE 404, JEFFERSON, LA 70123
OFFICE 504.364.2678
EMAIL: PURCHASING@JEFFPARISH.NET WEBSITE: WWW.JEFFPARISH.NET



JEFFERSON PARISH

DEPARTMENT OF PURCHASING

CYNTHIA LEE SHENG
PARISH PRESIDENT

RENNY SIMNO
DIRECTOR

October 2020

PURCHASING DEPARTMENT ANNOUNCEMENT

Public Access to the General Government Building and Joseph S. Yenni Building:

Jefferson Parish Government buildings are open to the public. Due to COVID-19 safety precautions, all visitors will be required to wear a mask or face covering and undergo a temperature screening prior to entry.

Bid Openings:

All bids will be publicly opened at the West Bank location and via teleconference at 2:30 p.m., by calling the following number:

Dial-in Number: (504) 323-1800

Meeting ID: 181357

Bids will be accepted through Central Bidding or manual submission. Manually-submitted bids can be delivered to either Purchasing office location; however, if submitting bids on the day of the bid opening, bidders must submit at the West Bank location. Manually-submitted bids will only be accepted until October 31, 2020 for bids opening before November 1, 2020. Bids will be received until 2 p.m. The bid opening teleconference will begin at 2:30 p.m. on each bid opening date.

If you have any questions, please contact the Purchasing Department at (504) 364-2678 or e-mail purchasing@jeffparish.net for assistance.

GENERAL GOVERNMENT BLDG. – 200 DERBIGNY ST., SUITE 4400, GRETNA, LA 70053
OFFICE 504.364.2678

JOSEPH S. YENNI BLDG. – 1221 ELMWOOD PARK BLVD., SUITE 404, JEFFERSON, LA 70123
OFFICE 504.364.2678
EMAIL: PURCHASING@JEFFPARISH.NET WEBSITE: WWW.JEFFPARISH.NET



Badger Meter

HR-E High Resolution Encoder

DESCRIPTION

Applications: The High Resolution Encoder (HR-E) is designed for use with all current Recordall® Disc, Turbo, Compound, Combo and Fire Series meters and assemblies. The HR-E provides connectivity with Badger Meter ORION® and GALAXY® AMR/AMI endpoints, BadgerTouch® modules and other AMR/AMI technology solutions approved by Badger Meter.

Electronic Resolution: Encoder output from the HR-E includes eight-dial resolution to AMR/AMI endpoints and the option of four, five, six, seven or eight-dial resolution for touch applications. Refer to tables on the next page for details.

Mounting: The HR-E in its shroud assembly uses a bayonet mount compatible with all Recordall Disc, Turbo, Compound and Fire Series meters and assemblies. The bayonet mount allows positioning of the register in any of four orientations for visual reading convenience. The HR-E can be removed from the meter without disrupting water service.

Magnetic Drive: A direct-drive, high-strength magnetic coupling, through the meter body to the wetted magnet, provides reliable and dependable register coupling.

Local Indication: The HR-E face features an eight-dial mechanical odometer wheel stack and a flow finder with a calibrated test circle.

Tamper-Resistant Features: Unauthorized removal of the HR-E is inhibited by the option of a tamper detection seal wire screw, tamper-resistant TORX® seal screw, or the proprietary tamper-resistant keyed seal screw. Each can be installed at the meter site or at the factory.

Construction: The housing of the HR-E is constructed of a strengthened glass lens top and a corrosion-resistant metal bottom. Internal construction materials are thermoplastic for long life and high reliability. The encoder gearing is self-lubricating thermoplastic to minimize friction and provide long, reliable life. The shroud assembly is thermoplastic.

Temperature: The operating range of the HR-E is -40...140° F (-40...60° C). The water meter should not be subjected to temperatures below freezing.

Sealing: The HR-E encoder is permanently sealed to eliminate the intrusion of moisture, dirt or other contaminants. The HR-E achieves true water resistance due to the unique adhesive technology used to seal the glass dome to the corrosion-resistant metal bottom. Due to this sealing process, the HR-E exceeds all applicable requirements of AWWA Standard C707. With leak rates less than 10-6 cc/sec, as tested by a helium mass spectrometer, the HR-E is suitable for installation in all environments, including meter pits subject to continuous submergence.

Electrical: The electronic circuitry is designed to provide immunity to electrical surges and transients per IEC1000-4-2, IEC1000-4-4. Operation of the HR-E is dependent on the wire length limitations of connected AMR/AMI equipment.



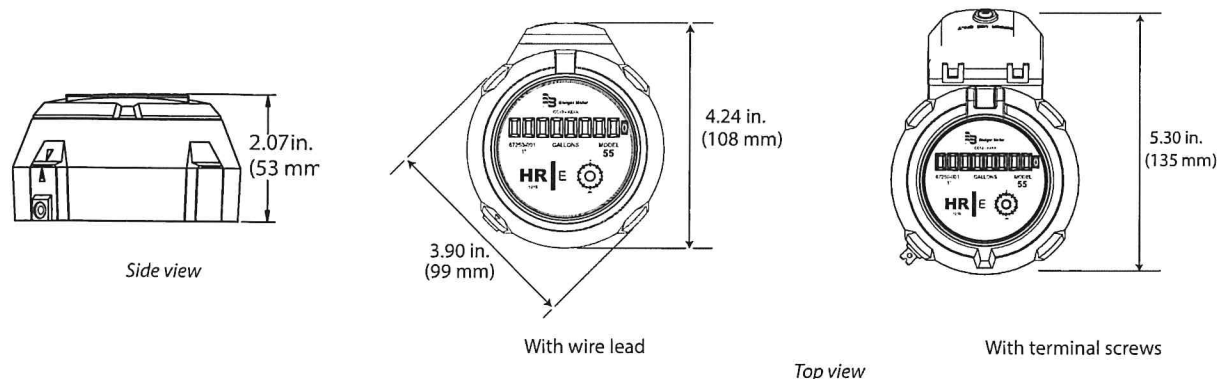
SPECIFICATIONS

Encoder Type	Straight reading, permanently sealed, magnetic drive
Unit of Measure	U.S. Gallons, Cubic Feet, Cubic Meters, clearly identified on encoder face
Number Wheels	Eight with 5/32 inch high numerals
Test Circle	360° circle with ten major increments, ten divisions each
Weight	10 ounces
Humidity	0...100% condensing when equipped with potted lead wire, 0...95% non-condensing with screw-terminal wire connections
Temperature	-40...140° F (-40...60° C)
Signal Output	Industry Standard ASCII Format
Visual Resolution	1/100th of Test Circle
Electronic Resolution	8-dial resolution for AMR/AMI; 4, 5, 6, 7 or 8-dial resolution for BadgerTouch
Signal Type	3-wire synchronous for AMR/AMI solutions (red=clock/power, black=ground, green=data) 2-wire asynchronous for Touch solutions
Power Source	External

Operating Characteristics: The reading obtained by an AMR/AMI device is sensed directly from the position of the encoder's odometer using internal LED light paths to determine the exact position of each number wheel. This technology eliminates electromechanical contacts that could wear out, and provides greater long-term performance.

Wire Connections: The HR-E is available with an in-line connector for easy connection and installation to AMR/AMI endpoints. It is also available with a flying lead for a field splice connection or fully prewired to an AMR/AMI endpoint. A terminal screw version of the HR-E is also available. This version features a tamper-resistant cap over the three-wire terminals. The HR-E with terminal screws is designed for indoor installations in protected environments such as residential basements.

DIMENSIONAL DRAWINGS



MEASUREMENT RESOLUTION

The minimum electronic resolution of the HR-E is as noted below (8-Dial Reading). To verify the correct resolution for your application, contact Badger Meter Customer Service.

Recordall Disc Series	Size (in.)	8-Dial Resolution (gal)	8-Dial Resolution (ft³)	8-Dial Resolution (m³)
M25/MLP	5/8	0.1	0.01	0.001
M25/MLP	3/4	0.1	0.01	0.001
M35	3/4	0.1	0.01	0.001
M40	1	0.1	0.01	0.001
M55	1	0.1	0.01	0.001
M70	1	0.1	0.01	0.001
M120	1-1/2	1	0.1	0.01
M170	2	1	0.1	0.01

Fire Service Series	8-Dial Resolution (gal)	8-Dial Resolution (ft³)	8-Dial Resolution (m³)
3 in.	1	0.1	0.01
4 in.	1	0.1	0.01
6 in.	10	1	0.1
8 in.	10	1	0.1
10 in.	10	1	0.1

Recordall Turbo Series	Size (in.)	8-Dial Resolution (gal)	8-Dial Resolution (ft³)	8-Dial Resolution (m³)
T160	1-1/2	1	0.1	0.01
T200	2	1	0.1	0.01
T450	3	1	0.1	0.01
T1000	4	1	0.1	0.01
T2000	6	10	1	0.1
T3500	8	10	1	0.1
T5500	10	10	1	0.1
T6200	12	100	10	0.1
T6600	16	100	10	1
T10000	20	100	100	1

Recordall Compound Series	Size (in.)	8-Dial Resolution (gal)	8-Dial Resolution (ft³)	8-Dial Resolution (m³)
High Side T200	2	1	0.1	0.01
Low Side M25	2	0.1	0.01	0.001
High Side T450	3	1	0.1	0.01
Low Side M25	3	0.1	0.01	0.001
High Side T1000	4	1	0.1	0.01
Low Side M35	4	0.1	0.01	0.001
High Side T2000	6	10	1	0.1
Low Side M35	6	0.1	0.01	0.001

Resolution stated as individual high and low readings.

Making Water Visible®

Making Water Visible, BadgerTouch, GALAXY, ORION and Recordall are registered trademarks of Badger Meter, Inc. Other trademarks appearing in this document are the property of their respective entities. Due to continuous research, product improvements and enhancements, Badger Meter reserves the right to change product or system specifications without notice, except to the extent an outstanding contractual obligation exists. © 2017 Badger Meter, Inc. All rights reserved.

www.badgermeter.com

The Americas | Badger Meter | 4545 West Brown Deer Rd | PO Box 245036 | Milwaukee, WI 53224-9536 | 800-876-3837 | 414-355-0400
 México | Badger Meter de las Américas, S.A. de C.V. | Esq. Angelina N° 32 | Colonia Guadalupe Inn | CP 01050 | México, DF | México | +52-55-5662-0882
 Europe, Eastern Europe Branch Office (for Poland, Latvia, Lithuania, Estonia, Ukraine, Belarus) | Badger Meter Europe | ul. Korfantego 6 | 44-193 Knurów | Poland | +48-32-236-8787
 Europe, Middle East and Africa | Badger Meter Europa GmbH | Nürtinger Str 76 | 72639 Neuffen | Germany | +49-7025-9208-0
 Europe, Middle East Branch Office | Badger Meter Europe | PO Box 341442 | Dubai Silicon Oasis, Head Quarter Building, Wing C, Office #C209 | Dubai / UAE | +971-4-371 2503
 Slovakia | Badger Meter Slovakia s.r.o. | Raciarska 109/B | 831 02 Bratislava, Slovakia | +421-2-44 63 83 91
 Asia Pacific | Badger Meter | 80 Marine Parade Rd | 21-06 Parkway Parade | Singapore 449269 | +65-63464836
 China | Badger Meter | 7-1202 | 99 Hangzhong Road | Minhang District | Shanghai | China 201101 | +86-21-5763 5112
 Switzerland | Badger Meter Swiss AG | Mittelholzerstrasse 8 | 3006 Bern | Switzerland | +41-31-932 01 11



Badger Meter

HR-E

High Resolution Encoder

PRODUCTS COVERED

This Badger Meter warranty shall apply to the High Resolution Encoder (HR-E) ("Product"), sold on or after June 3, 2014. This warranty is not transferable and is extended only to utilities, municipalities, other commercial users and authorized distributors, hereafter referred to as "Customer" and does NOT apply to consumers or any person or entity who is not an original customer of Badger Meter or its authorized distributors.

MATERIALS AND WORKMANSHIP

Badger Meter warrants the Product to be free from defects in materials and workmanship appearing within ten (10) years and six (6) months after shipment from Badger Meter.

PRODUCT RETURNS

Any Product proved to the satisfaction of Badger Meter to have failed the foregoing warranties will, at the option of Badger Meter, be repaired or replaced without charge to the Customer. The Badger Meter obligation hereunder shall be limited to such repair and replacement and shall be conditioned upon Badger Meter receiving written notice of any alleged defect within ten (10) days after its discovery. This exclusive remedy shall not be deemed to have failed its essential purpose so long as Badger Meter is willing and able to replace defective products or issue a credit to purchaser within a reasonable time of proof to Badger Meter that a defect is involved. Product returns must be shipped by the Customer prepaid F.O.B. to the nearest Badger Meter factory or distribution center. The Customer shall be responsible for all direct and indirect costs associated with removing the original Product and reinstalling the repaired or replacement Product.

LIMITS OF LIABILITY

This warranty shall not apply to Product repaired or altered by parties other than Badger Meter. The foregoing warranty applies only to the extent that the Product is installed, serviced and operated strictly in accordance with Badger Meter instructions. The warranty shall not apply and shall be void with respect to Product exposed to conditions other than those detailed in the Badger Meter Product technical literature or which have been subject to vandalism, negligence, accident, acts of God, alteration, improper installation, operation or repair, or other circumstances which are beyond the reasonable control of Badger Meter. With respect to Product not manufactured by Badger Meter, the warranty obligations of Badger Meter shall in all respects conform and be limited to the warranty extended to Badger Meter by the supplier.

THE FOREGOING WARRANTIES ARE EXCLUSIVE AND IN LIEU OF ALL OTHER EXPRESS AND IMPLIED WARRANTIES WHATSOEVER, INCLUDING BUT NOT LIMITED TO IMPLIED WARRANTIES OF MERCHANTABILITY AND FITNESS FOR A PARTICULAR PURPOSE **(except warranties of Title).**

Any description of Product, whether in writing or made orally by Badger Meter or its agents, specifications, samples, models, bulletins, drawings, diagrams, engineering sheets or similar materials used in connection with any Customer's order are for the sole purpose of identifying Product and shall not be construed as an express warranty. Any suggestions by Badger Meter or its agents regarding use, application or suitability of Product shall not be construed as an express warranty unless confirmed to be such in writing by Badger Meter.

Exclusion of Consequential Damages and Disclaimer of Other Liability

Badger Meter liability with respect to breaches of the foregoing warranty shall be limited as stated therein. Badger Meter liability shall in no event exceed the contract price. BADGER METER SHALL NOT BE SUBJECT TO AND DISCLAIMS: (1) ANY OTHER OBLIGATIONS OR LIABILITIES ARISING OUT OF BREACH OF CONTRACT OR OF WARRANTY (2) ANY OBLIGATIONS WHATSOEVER ARISING FROM TORT CLAIMS (INCLUDING NEGLIGENCE AND STRICT LIABILITY) OR ARISING UNDER OTHER THEORIES OF LAW WITH RESPECT TO PRODUCTS SOLD OR SERVICES RENDERED BY BADGER METER, OR ANY UNDERTAKINGS, ACTS OR OMISSIONS RELATING THERETO, AND (3) ALL CONSEQUENTIAL, INCIDENTAL AND CONTINGENT DAMAGES WHATSOEVER.

Making Water Visible®

MAKING WATER VISIBLE is a registered trademark of Badger Meter, Inc. Other trademarks appearing in this document are the property of their respective entities. Due to continuous research, product improvements and enhancements, Badger Meter reserves the right to change product or system specifications without notice, except to the extent an outstanding contractual obligation exists. © 2014 Badger Meter, Inc. All rights reserved.

www.badgermeter.com

The Americas | **Badger Meter** | 4545 West Brown Deer Rd | PO Box 245036 | Milwaukee, WI 53224-9536 | 800-876-3837 | 414-355-0400
México | **Badger Meter de las Americas, S.A. de C.V.** | Pedro Luis Ogazón N°32 | Esq. Angelina N°24 | Colonia Guadalupe Inn | CP 01050 | México, DF | México | +52-55-5662-0882
Europe, Middle East and Africa | **Badger Meter Europa GmbH** | Nurlinger Str 76 | 72639 Neuffen | Germany | +49-7025-9208-0
Europe, Middle East Branch Office | **Badger Meter Europe** | PO Box 341442 | Dubai Silicon Oasis, Head Quarter Building, Wing C, Office #C209 | Dubai / UAE | +971-4-371 2503
Czech Republic | **Badger Meter Czech Republic s.r.o.** | Marikova 2082/26 | 621 00 Brno, Czech Republic | +420-5-41420411
Slovakia | **Badger Meter Slovakia s.r.o.** | Racianska 109/B | 831 02 Bratislava, Slovakia | +421-2-44 63 63 01
Asia Pacific | **Badger Meter** | 80 Marine Parade Rd | 21-06 Parkway Parade | Singapore 449269 | +65-63464836
China | **Badger Meter** | 7-1202 | 99 Hangzhong Road | Minhang District | Shanghai | China 201101 | +86-21-5763 5412



Badger Meter

Recordall® Disc Meters

Lead-Free Bronze Alloy, Sizes 5/8, 5/8 x 3/4, 3/4 & 1 inch
NSF/ANSI Standards 61 and 372 Certified



Model 25—5/8 in., 5/8 x 3/4 in.



Model 35—3/4 in.



Model 55—1 in.



Model 70—1 in.

DESCRIPTION

The Recordall Disc Series meters meet or exceed the most recent revision of AWWA Standard C700 and are available in a lead-free bronze alloy. The meters comply with the lead-free provisions of the Safe Drinking Water Act, are certified to NSF/ANSI Standards 61 and 372 (Trade Designations: M25-LL, M35-LL, M55-LL, M70-LL) and carry the NSF-61 mark on the housing. All components of the lead-free bronze alloy meter (housing, measuring element, seals, and so on) comprise the certified system.

Applications: For use in measurement of potable cold water in residential, commercial and industrial services where flow is in one direction only.

Operation: Water flows through the meter's strainer and into the measuring chamber where it causes the disc to nutate. The disc, which moves freely, nutates on its own ball, guided by a thrust roller. A drive magnet transmits the motion of the disc to a follower magnet located within the permanently sealed register. The follower magnet is connected to the register gear train. The gear train reduces the disc nutations into volume totalization units displayed on the register or encoder face.

Operating Performance: The Recordall Disc Series meters meet or exceed registration accuracy for the low flow rates (95%), normal operating flow rates ($100 \pm 1.5\%$), and maximum continuous operation flow rates as specifically stated in AWWA Standard C700.

Construction: Recordall Disc meter construction, which complies with ANSI/AWWA standard C700, consists of three basic components: meter housing, measuring chamber and permanently sealed register or encoder. The meter is available in a lead-free bronze alloy with externally threaded spuds. A corrosion-resistant engineered polymer material is used for the measuring chamber.

Magnetic Drive: Direct magnetic drive, through the use of high-strength magnets, provides positive, reliable and dependable register coupling for straight-reading or AMR/AMI meter reading options.

Tamper-Proof Features: Unauthorized removal of the register or encoder is inhibited by the option of a tamper detection seal wire screw, TORX® tamper-resistant seal screw or the proprietary tamper-resistant keyed seal screw. Each can be installed at the meter site or at the factory.

Maintenance: Badger Meter Recordall Disc Series meters are designed and manufactured to provide long-term service with minimal maintenance. When maintenance is required, it can be performed easily either at the meter installation or at any other convenient location.

To simplify maintenance, the register, measuring chamber, and strainer can be replaced without removing the meter housing from the installation. No change gears are required for accuracy calibration. Interchangeability of parts among like-sized meters and meter models also minimizes spare parts inventory investment. The built-in strainer has an effective straining area of twice the inlet size.

Connections: Tailpieces/Unions for installations of meters on various pipe types and sizes, including misaligned pipes, are available as an option.

Meter Spud and Connection Sizes

Model	Size Designation (in.)	x	"L" Laying Length (in.)	"B" Bore Dia. (in.)	Coupling Nut and Spud Thread (in.)	Tailpiece Pipe Thread (NPT) (in.)
25	5/8	x	7-1/2	5/8	3/4 (5/8)	1/2
	5/8 x 3/4	x	7-1/2	5/8, 3/4	1 (3/4)	3/4
35	3/4	x	7-1/2	3/4	1 (3/4)	3/4
	3/4	x	9	3/4	1 (3/4)	3/4
	3/4 x 1	x	9	3/4	1-1/4 (1)	1
55	1	x	10-3/4	1	1-1/4 (1)	1
70	1	x	10-3/4	1	1-1/4 (1)	1

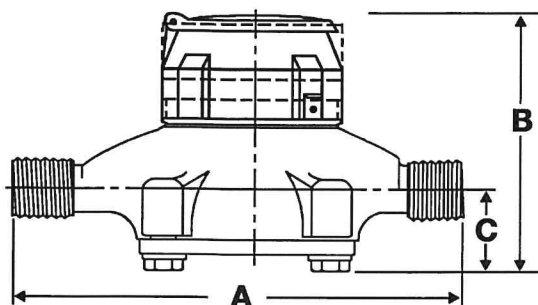
SPECIFICATIONS

	Model 25 (5/8 in. & 5/8 x 3/4 in.)	Model 35 (3/4 in.)	Model 55 (1 in.)	Model 70 (1 in.)
Typical Operating Range (100% ±1.5%)	0.5...25 gpm (0.11...5.7 m³/hr)	0.75...35 gpm (0.17...7.9 m³/hr)	1...55 gpm (0.23...12.5 m³/hr)	1.25...70 gpm (0.28...16 m³/hr)
Low Flow	0.25 gpm (0.057 m³/hr) Min. 98.5%	0.375 gpm (0.085 m³/hr) Min. 97%	0.5 gpm (0.11 m³/hr) Min. 95%	0.75 gpm (0.17 m³/hr) Min. 95%
Maximum Continuous Operation	15 gpm (3.4 m³/hr)	25 gpm (5.7 m³/hr)	40 gpm (9.1 m³/hr)	50 gpm (11.3 m³/hr)
Pressure Loss at Maximum Continuous Operation	5/8 in. size: 3.5 psi @ 15 gpm (0.24 bar @ 3.4 m³/hr) 5/8 x 3/4 in. size: 2.8 psi @ 15 gpm (0.19 bar @ 3.4 m³/hr)	5 psi @ 25 gpm (0.37 bar @ 5.7 m³/hr)	3.4 psi @ 40 gpm (0.23 bar @ 9.1 m³/hr)	6.5 psi @ 50 gpm (0.45 bar @ 11.3 m³/hr)
Maximum Operating Temperature	80° F (26° C)			
Maximum Operating Pressure	150 psi (10 bar)			
Measuring Element	Nutating disc, positive displacement			
Meter Connections	<i>Available in NL bronze and engineered polymer to fit spud thread bore diameter sizes:</i>			
	5/8 in. size: 5/8 in. (DN 15 mm) 5/8 x 3/4 in. size: 3/4 in. (DN 15 mm)	3/4 in. (DN 20 mm)	1 in. (DN 25 mm)	1 in. (DN 25 mm)

MATERIALS

	Model 25 (5/8 in. & 5/8 × 3/4 in.)	Model 35 (3/4 in.)	Model 55 (1 in.)	Model 70 (1 in.)
Meter Housing	Lead-free bronze alloy			
Housing Bottom Plates	Cast iron, lead-free bronze alloy, engineered polymer	Cast iron, lead-free bronze alloy		
Measuring Chamber	Engineered polymer			
Disc	Engineered polymer			
Trim	Stainless steel			
Strainer	Engineered polymer			
Disc Spindle	Stainless steel	Stainless steel	Engineered polymer	Stainless steel
Magnet	Ceramic	Ceramic	Ceramic	Ceramic
Magnet Spindle	Engineered polymer	Stainless steel	Engineered polymer	Stainless steel
Register Lid and Shroud	Engineered polymer, bronze			

DIMENSIONS



Meter Size	Model	A Laying Length	B Height Reg.	C Centerline Base	Width	Approx. Shipping Weight
5/8 in. (15 mm)	25	7-1/2 in. (190 mm)	4-15/16 in. (125 mm)	1-11/16 in. (42 mm)	4-1/4 in. (108 mm)	4-1/2 lb (2 kg)
5/8 in. x 3/4 in. (15 mm)		7-1/2 in. (190 mm)	4-15/16 in. (125 mm)	1-11/16 in. (42 mm)	4-1/4 in. (108 mm)	4-1/2 lb (2 kg)
3/4 in. (20 mm)	35	7-1/2 in. (190 mm)	5-1/4 in. (133 mm)	1-5/8 in. (41 mm)	5 in. (127 mm)	5-1/2 lb (2.5 kg)
3/4 in. (20 mm)		9 in. (229 mm)	5-1/4 in. (133 mm)	1-5/8 in. (41 mm)	5 in. (127 mm)	5-3/4 lb (2.6 kg)
3/4 in. x 1 in. (20 mm)		9 in. (229 mm)	5-1/4 in. (133 mm)	1-5/8 in. (41 mm)	5 in. (127 mm)	6 lb (2.7 kg)
1 in. (25 mm)	55	10-3/4 in. (273 mm)	6 in. (152 mm)	2-1/32 in. (52 mm)	6-1/4 in. (159 mm)	8-3/4 lb (3.9 kg)
1 in. (25 mm)	70	10-3/4 in. (273 mm)	6-1/2 in. (165 mm)	2-5/16 in. (59 mm)	7-3/4 in. (197 mm)	11-1/2 lb (5.2 kg)

REGISTERS / ENCODERS

Standard—Sweep-Hand Registration

The standard register is a straight-reading, permanently sealed magnetic drive register. Dirt, moisture, tampering and lens fogging problems are eliminated. The register has a six-odometer wheel totalization display, 360° test circle with center sweep hand, and flow finder to detect leaks. Register gearing is made of self-lubricating engineered polymer, which minimizes friction and provides long life. The multi-position register simplifies meter installation and reading. The register capacity is 10,000,000 gallons (1,000,000 ft³, 100,000 m³).

A Model 25 register is used in the following example:



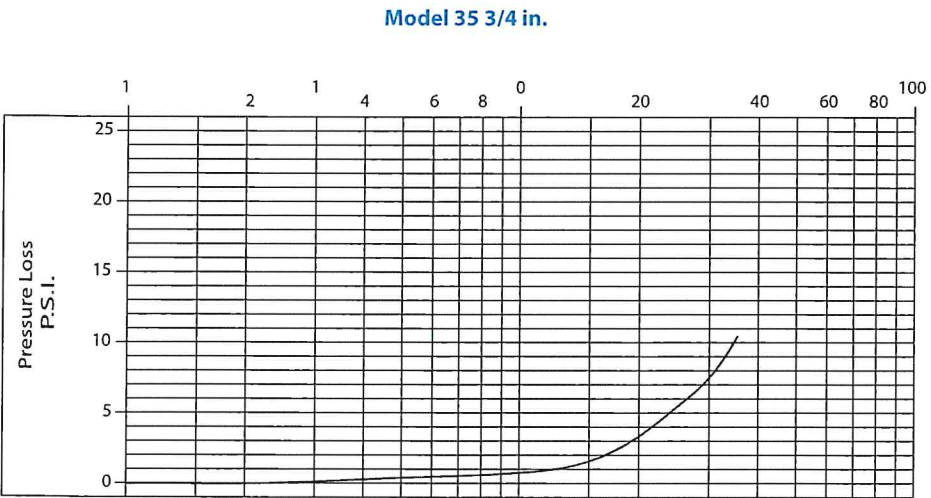
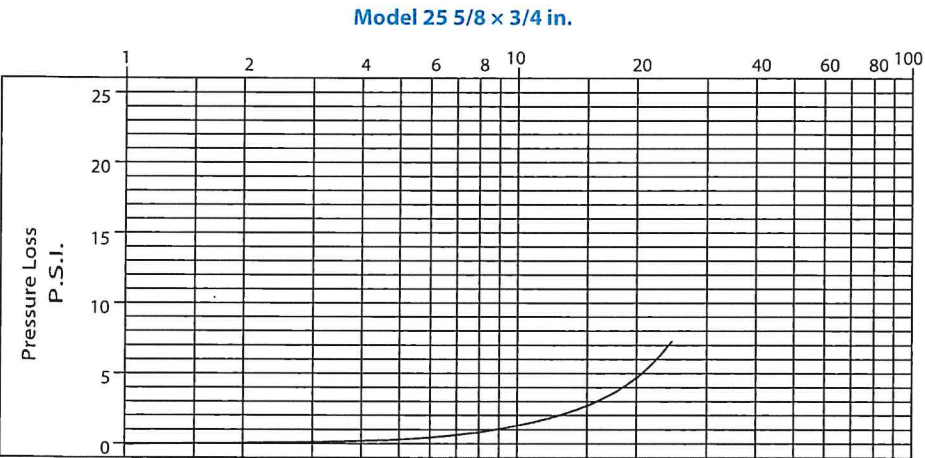
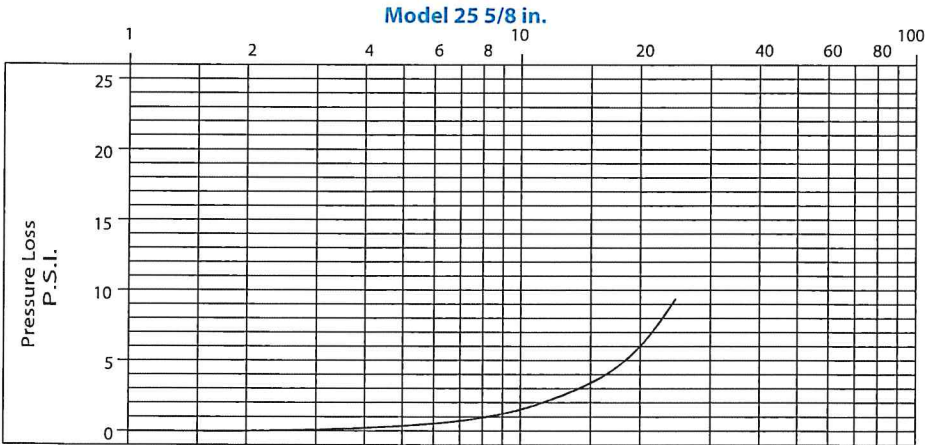
Model	Gallon	Cubic Feet	Cubic Meter
25 (5/8 in.)	10	1	0.1/0.01
25 (5/8 x 3/4 in.)	10	1	0.1/0.01
35	10	1	0.1
55	10	1	0.1
70	10	1	0.1

Optional—Encoders for AMR/AMI Reading Solutions

AMR/AMI solutions are available for all Recordall Disc Series meters. All reading options can be removed from the meter without disrupting water service. Badger Meter encoders provide years of reliable, accurate readings for a variety of applications. See details at www.badgermeter.com.

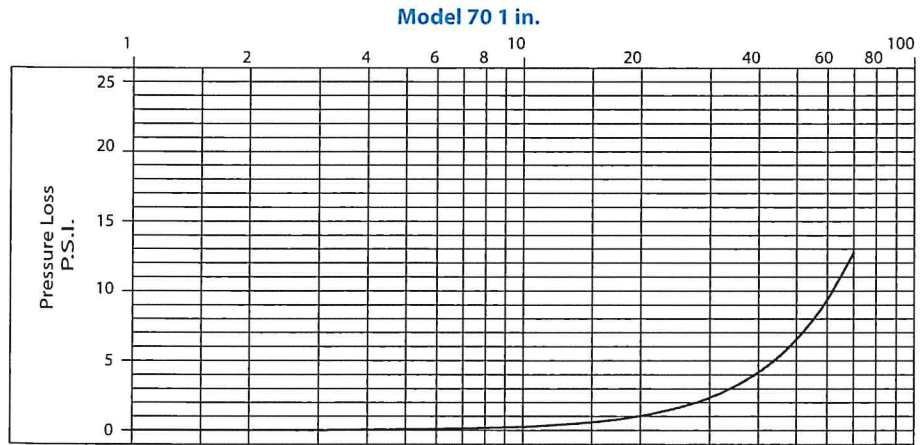
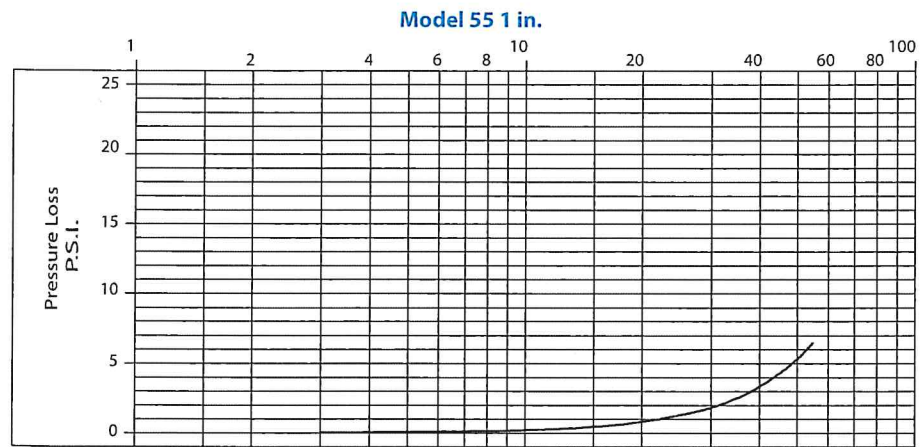
PRESSURE LOSS CHARTS

Rate of Flow in Gallons per Minute



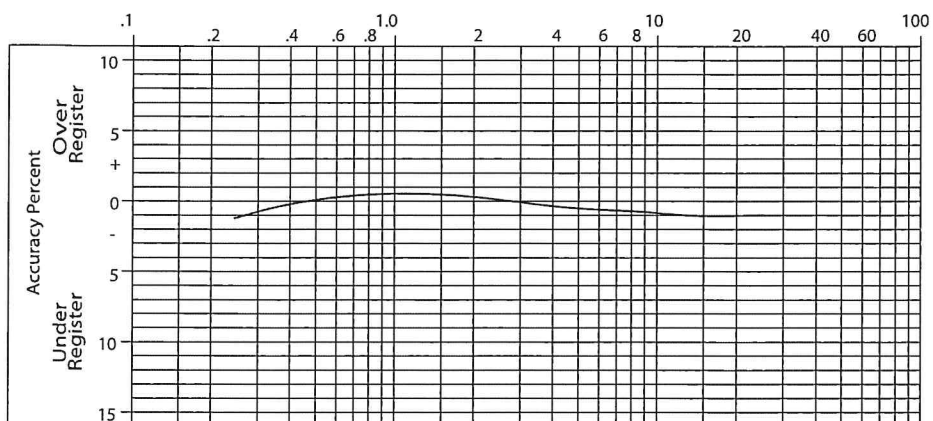
PRESSURE LOSS CHARTS (CONTINUED)

Rate of Flow in Gallons per Minute

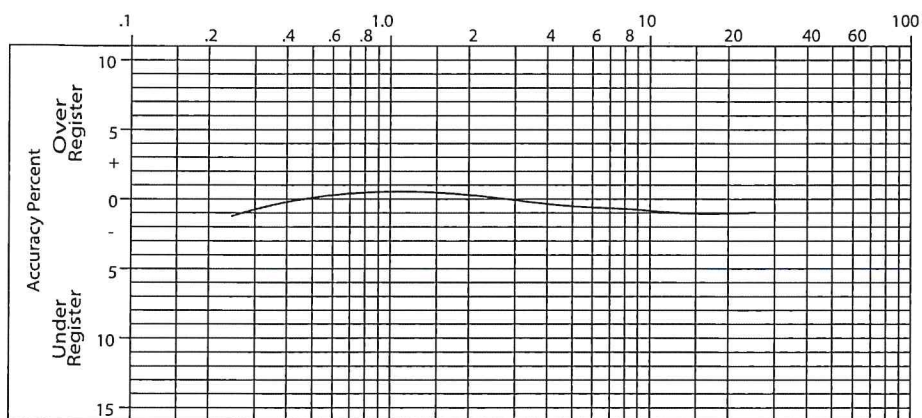


ACCURACY CHARTS

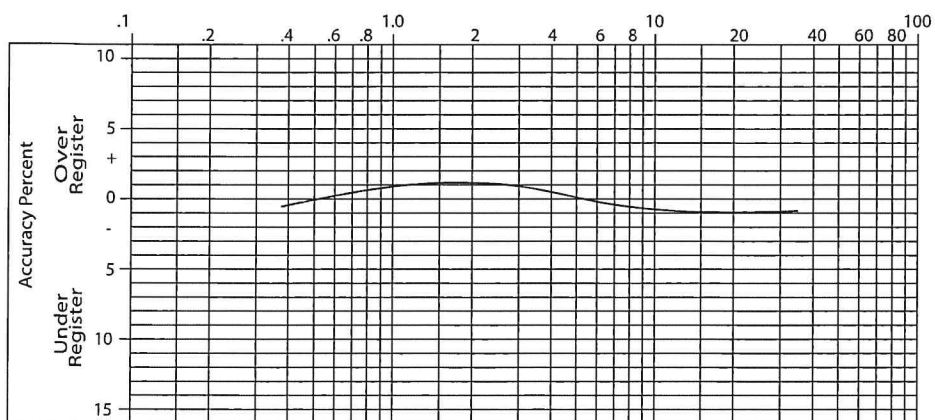
Model 25 5/8 in.



Model 25 5/8 x 3/4 in.

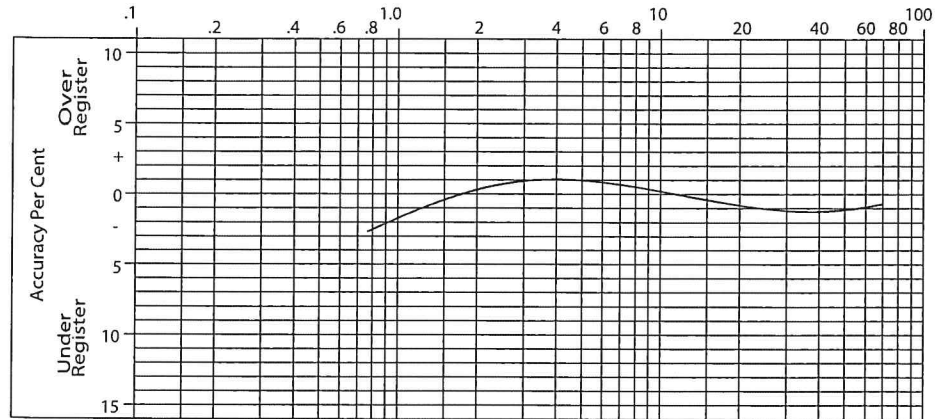


Model 35 3/4 in.

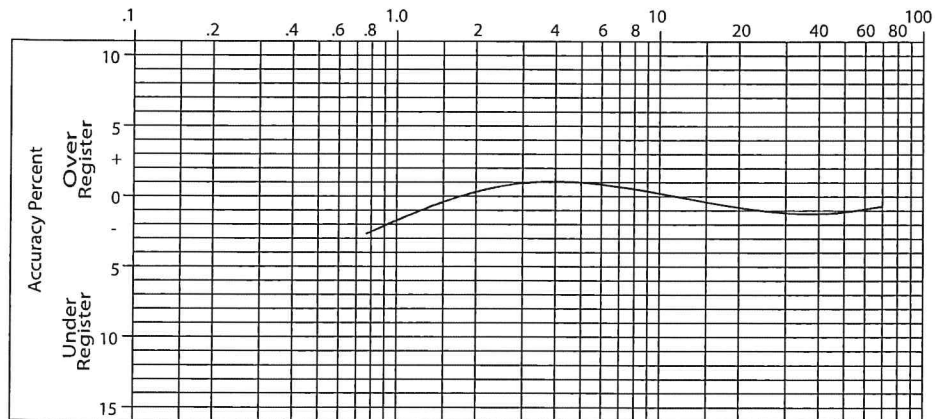


ACCURACY CHARTS (CONTINUED)

Model 55 1 in.



Model 70 1 in.



SMART WATER IS BADGER METER

Recordall is a registered trademark of Badger Meter, Inc. Other trademarks appearing in this document are the property of their respective entities. Due to continuous research, product improvements and enhancements, Badger Meter reserves the right to change product or system specifications without notice, except to the extent an outstanding contractual obligation exists. © 2019 Badger Meter, Inc. All rights reserved.

www.badgermeter.com



Badger Meter

Lead-Free Bronze Disc Meters

PRODUCTS COVERED

This warranty shall apply to all Recordall® Lead-Free Bronze Disc Meters, models 25 through 170, when used to measure potable water, including the registers used with these meters (collectively "Product") sold on or after January 25, 2019. This warranty is extended only to utilities, municipalities, other commercial users and authorized Badger Meter, Inc. distributors, hereafter referred to as "Customer" and does NOT apply to consumers or any person or entity who is not an original customer of Badger Meter or its authorized distributors.

MATERIALS AND WORKMANSHIP

Badger Meter warrants Product to be free from defects in materials and workmanship appearing within the following time frames and those listed in the table below:

Housings

Twenty-five (25) years and six (6) months after shipment from Badger Meter.

Local Registers Supplied with the Meters Listed Herein

Twenty-five (25) years and six (6) months after shipment from Badger Meter.

	AWWA New Meter Accuracy	AWWA Repaired Meter Accuracy (AWWA M6 Manual)	Badger Meter Extended Low Flow Meter Accuracy
Recordall Meter Model, Size	<i>The meter product will meet or exceed new meter accuracy standards set forth in AWWA Standard C700 for the following periods:</i>	<i>The meter product will meet or exceed repaired meter accuracy standards set forth in AWWA Manual M-6, Chapter 5, Table 5.3 for the following periods:</i>	<i>Badger Meter further warrants the meter product to meet or exceed the following extended low flow accuracies in excess of AWWA standard:</i>
Model 25, 5/8 in. and 5/8 x 3/4 in.	Five (5) years from date of shipment or registration of 750,000 gallons, whichever occurs first.	Fifteen (15) years from date of shipment or registration of 2,500,000 gallons, whichever occurs first, with a 25 gpm safe maximum operating capacity and a 15 gpm maximum rate for continuous operation.	Badger Meter warrants Product low flow accuracy of 98.5% at a rate of 1/4 gpm and low flow accuracy of 95.0% at a rate of 1/8 gpm for five (5) years from date of shipment or registration of 675,000 gallons, whichever occurs first.
Model 35, 3/4 in.	Five (5) years from date of shipment or registration of 750,000 gallons, whichever occurs first.	Fifteen (15) years from date of shipment or registration of 2,500,000 gallons, whichever occurs first, with a 35 gpm safe maximum operating capacity and a 25 gpm maximum rate for continuous operation.	Badger Meter warrants Product low flow accuracy of 97% at a rate of 3/8 gpm for five (5) years from date of shipment or registration of 675,000 gallons, whichever occurs first.
Model 55, 1 in.	Five (5) years from date of shipment or registration of 1,000,000 gallons, whichever occurs first.	Fifteen (15) years from date of shipment or registration of 3,000,000 gallons, whichever occurs first, with a 55 gpm safe maximum operating capacity and a 40 gpm maximum rate for continuous operation.	Badger Meter warrants Product low flow accuracy of 95% at a rate of 1/2 gpm for three (3) years from date of shipment or registration of 575,000 gallons, whichever occurs first.
Model 70, 1 in.	Five (5) years from date of shipment or registration of 1,100,000 gallons, whichever occurs first.	Fifteen (15) years from date of shipment or registration of 3,250,000 gallons, whichever occurs first, with a 70 gpm safe maximum operating capacity and a 50 gpm maximum rate for continuous operation.	Badger Meter warrants Product low flow accuracy of 95% at a rate of 3/4 gpm for three (3) years from date of shipment or registration of 1,100,000 gallons, whichever occurs first.
Model 120, 1-1/2 in.	Two (2) years from date of shipment or registration of 1,600,000 gallons, whichever occurs first.	Fifteen (15) years from date of shipment or registration of 5,600,000 gallons, whichever occurs first, with a 120 gpm safe maximum operating capacity and a 80 gpm maximum rate for continuous operation.	Badger Meter warrants Product low flow accuracy of 95% at a rate of 1-1/4 gpm for two (2) years from date of shipment or registration of 1,440,000 gallons, whichever occurs first.
Model 170, 2 in.	Two (2) years from date of shipment or registration of 2,100,000 gallons, whichever occurs first.	Fifteen (15) years from date of shipment or registration of 10,400,000 gallons, whichever occurs first, with a 170 gpm safe maximum operating capacity and a 100 gpm maximum rate for continuous operation.	Badger Meter warrants Product low flow accuracy of 95% at a rate of 1-1/2 gpm for two (2) years from date of shipment or registration of 1,890,000 gallons, whichever occurs first.

PRODUCT RETURNS

Any Product proved to the satisfaction of Badger Meter to have failed the foregoing warranties will, at the option of Badger Meter, be repaired or replaced without charge to the Customer. Any eligible Product repaired or replaced by Badger Meter will retain the original Product's warranty based on the original Product purchase date, at Badger Meter's sole discretion. The Badger Meter obligation hereunder shall be limited to such repair and replacement and shall be conditioned upon Badger Meter receiving written notice of any alleged defect within ten (10) days after its discovery. This exclusive remedy shall not be deemed to have failed its essential purpose so long as Badger Meter is willing and able to replace defective products or issue a credit to purchaser within a reasonable time of proof to Badger Meter that a defect is involved. Product returns must be shipped by the Customer prepaid F.O.B. to the nearest Badger Meter factory or distribution center. The Customer shall be responsible for all direct and indirect costs associated with removing the original Product and reinstalling the repaired or replacement Product.

LIMITS OF LIABILITY

This warranty shall not apply to Product repaired or altered by parties other than Badger Meter. The foregoing warranty applies only to the extent that the Product is installed, serviced and operated strictly in accordance with AWWA Standard C700 and AWWA M6 Manual, as applicable. The warranty shall not apply and shall be void with respect to Product exposed to conditions other than those detailed in the Badger Meter Product technical and/or operational literature, or which have been exposed to adverse installation conditions, damaged by any water conditions and/or water quality, including but not limited to foreign matter in the water such as dirt, sand, minerals, debris, deposits, biofilms, extreme corrosivity, or other impurities, or which have been subject to passage of high-speed air slugs, vandalism, negligence, accident, acts of God, alteration, improper installation, operation or repair, or other circumstances which are beyond the reasonable control of Badger Meter. With respect to Product not manufactured by Badger Meter, the warranty obligations of Badger Meter shall in all respects conform and be limited to the warranty extended to Badger Meter by the supplier.

THE FOREGOING WARRANTIES ARE EXCLUSIVE AND IN LIEU OF ALL OTHER EXPRESS AND IMPLIED WARRANTIES WHATSOEVER, INCLUDING BUT NOT LIMITED TO IMPLIED WARRANTIES OF MERCHANTABILITY AND FITNESS FOR A PARTICULAR PURPOSE (except warranties of Title).

Any description of Product, whether in writing or made orally by Badger Meter or its agents, specifications, samples, models, bulletins, drawings, diagrams, engineering sheets, or similar materials used in connection with any Customer's order are for the sole purpose of identifying Product and shall not be construed as an express warranty. Any suggestions by Badger Meter or its agents regarding use, application or suitability of Product shall not be construed as an express warranty unless confirmed to be such in writing by Badger Meter.

Exclusion of Consequential Damages and Disclaimer of Other Liability

Badger Meter liability with respect to breaches of the foregoing warranty shall be limited as stated therein. Badger Meter liability shall in no event exceed the contract price.

BADGER METER SHALL NOT BE SUBJECT TO AND DISCLAIMS:

- (1) ANY OTHER OBLIGATIONS OR LIABILITIES ARISING OUT OF BREACH OF CONTRACT OR OF WARRANTY
- (2) ANY OBLIGATIONS WHATSOEVER ARISING FROM TORT CLAIMS (INCLUDING NEGLIGENCE AND STRICT LIABILITY) OR ARISING UNDER OTHER THEORIES OF LAW WITH RESPECT TO PRODUCTS SOLD OR SERVICES RENDERED BY BADGER METER, OR ANY UNDERTAKINGS, ACTS OR OMISSIONS RELATING THERETO, AND
- (3) ALL CONSEQUENTIAL, INCIDENTAL AND CONTINGENT DAMAGES WHATSOEVER.

Making Water Visible®

Recordall is a registered trademark of Badger Meter, Inc. Other trademarks appearing in this document are the property of their respective entities. Due to continuous research, product improvements and enhancements, Badger Meter reserves the right to change product or system specifications without notice, except to the extent an outstanding contractual obligation exists. © 2019 Badger Meter, Inc. All rights reserved.

www.badgermeter.com

The Americas | Badger Meter | 4545 West Brown Deer Rd | PO Box 245036 | Milwaukee, WI 53224-9536 | 800-876-3837 | 414-355-0400
México | Badger Meter de las Americas, S.A. de C.V. | Pedro Luis Ogazón N°32 | Esq. Angelina N°24 | Colonia Guadalupe Inn | CP 01050 | Mexico, DF | México | +52-55-5662-0882
Europe, Eastern Europe Branch Office (for Poland, Latvia, Lithuania, Estonia, Ukraine, Belarus) | Badger Meter Europe | ul. Korfanteo 6 | 44-193 Knurów | Poland | +48-32-236-8787
Europe, Middle East and Africa | Badger Meter Europa GmbH | Nürtinger Str 76 | 72629 Neuffen | Germany | +49-7025-9208-0
Europe, Middle East Branch Office | Badger Meter Europe | PO Box 341442 | Dubai Silicon Oasis, Head Quarter Building, Wing C, Office #C209 | Dubai / UAE | +971-4-371 2503
Slovakia | Badger Meter Slovakia s.r.o. | Raciarska 109/B | 831 02 Bratislava, Slovakia | +421-2-44 63 83 01
Asia Pacific | Badger Meter | 80 Marine Parade Rd | 19-07 Parkway Parade | Singapore 449269 | +65-63464836
Switzerland | Badger Meter Swiss AG | Mittelholzerstrasse 8 | 3006 Bern | Switzerland | +41-31-932 01 11

Legacy Document Number: RD-W-4-AWWA-EN



Badger Meter

Recordall® Turbo Series Meters

Models 160 (1-1/2 in.), 200 (2 in.), 450 (3 in.), 1000 (4 in.), 2000 (6 in.), 3500 (8 in.), 5500 (10 in.) and 6200 (12 in.)
NSF/ANSI Standards 61 and 372 Certified

DESCRIPTION

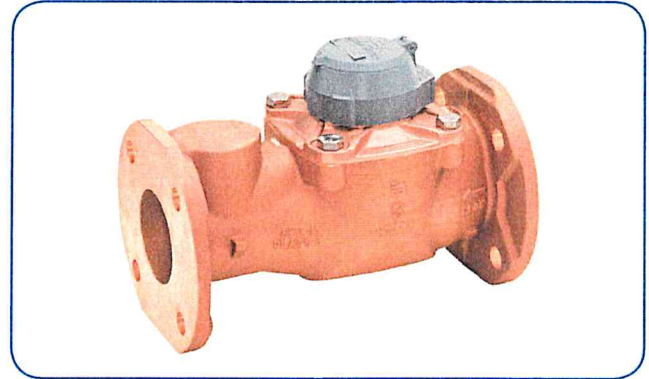
Recordall Turbo Series meters meet or exceed the most recent revision of AWWA Standard C701 Class II Standards and are available in a lead-free bronze alloy for sizes 1-1/2 in. through 10 in. and cast iron for 12 in. meters. Turbo Series meters comply with the lead-free provisions of the Safe Drinking Water Act. Sizes 1-1/2 in. through 10 in. meters are also certified to NSF/ANSI Standards 61 and 372 (Trade Designation: Turbo Series LL-NS) and carry the NSF-61 mark on the housing. All components of the lead-free alloy meter (housing, measuring element, seals and so on) comprise the certified system.

Models 160 through 6200 are designed for 1-1/2 in. through 12 in. applications. These meters feature:

- Direct coupled turbine based on an exclusive “floating rotor” design that reduces bearing friction—and associated wear and tear.
- Low pressure loss for improved system efficiency.
- Exceptional registration accuracy across low flow rate, normal operating flow rate and maximum continuous operation flow.
- Permanently sealed, tamper-resistant register or encoder.
- Integral strainer helps protect your system from damaging debris and related downtime. Integral strainer is standard on 1-1/2 in. meter, and optional on 2 in. through 4 in. meters.
- Meters and encoders are compatible with Badger Meter AMR/AMI meter reading systems and other approved reading technologies.

Applications: Recordall Turbo Series meters are designed for cold water, commercial and industrial applications where flows are consistent medium to high flows. Applications include hotels, apartment buildings, irrigations centers and manufacturing and processing plants. Turbo Series meters help reduce day-to-day maintenance costs while delivering accurate and efficient performance.

Operation & Performance: Direct magnetic drive is achieved when the magnet carrier is driven by a gear train coupled to the rotor. The gear train consists of two sets of gears connected by a vertical transmission shaft. One gear set is at the magnet carrier, the other is a worm gear set at the rotor shaft. When water flows into the Turbo Series meter measuring element, it contacts the multi-vaned rotor. The resulting rotor rotation is then transmitted by magnetic coupling to a sealed register or encoder. The direct magnetic drive is built to provide a reliable meter-to-registration coupling.



Tamper-Proof Features: Unauthorized removal of the register or encoder is inhibited by the option of a tamper detection seal wire screw, TORX® tamper-resistant seal screw or the proprietary tamper-resistant keyed seal screw. Each can be installed at the meter site or at the factory.

Construction: The Recordall Turbo Series meter is constructed in compliance with ANSI and AWWA C701 standards. It consists of the following basic components: meter housing, interchangeable, unitized measuring element and permanently sealed direct reading registers or encoders.

The measuring element consists of the transmission coupling, rotor, inlet and outlet straightening vanes with nose cones, and calibration ring assembly. The unique inlet and outlet straightening vanes minimize swirl from piping arrangements upstream as well as downstream.

A strainer is recommended to help ensure optimal flow conditioning and protection for the measuring element. The integral strainer is standard on the 1-1/2 in. meter and an available option on the 2 in. through 4 in. meters. The stainless steel strainer is built into the inlet end and includes a removable cover plate to permit easy access for routine cleaning. External strainers are available in sizes 2 in. through 12 in.

To simplify maintenance, the registers or encoders and measuring elements can be removed without removing the meter housing. Interchangeability of certain parts between meters also minimizes spare parts inventory investment.

Meter Installation: The meter is designed for installations where flow is in one direction only. Companion flanges for installation of meters on various pipe types and sizes are available in cast iron or NL bronze as an option. See the *Recordall Turbo Series Meters User Manual* available at www.badgermeter.com for specific instructions.

SPECIFICATIONS

Turbo Series Model	160 1-1/2 in. (40 mm)	200 2 in. (50 mm)	450 3 in. (80 mm)	1000 4 in. (100 mm)	2000 6 in. (150 mm)	3500 8 in. (200 mm)	5500 10 in. (250 mm)	6200 12 in. (300 mm)
Meter Flanges AWWA 125 Pound Class	Elliptical	Elliptical or Round	Round	Round	Round	Round	Round	Round AWWA 125 lb class
Typical Operating Range (100% ± 1.5%)	4...200 gpm (0.9...45.4 m³/h)	4...310 gpm (0.9...70.4 m³/h)	5...550 gpm (1.1...124.9 m³/h)	10...1250 gpm (2.3...284 m³/hr)	20...2500 gpm (4.5...568 m³/h)	30...4500 gpm (6.8...1022 m³/h)	50...7000 gpm (11.4...1590 m³/h)	90...8800 gpm (20.5...1998 m³/h)
Typical Low Flow (95% min.)	2.5 gpm (0.6 m³/h)	2.5 gpm (0.6 m³/h)	4 gpm (0.9 m³/h)	6 gpm (1.4 m³/h)	12 gpm (2.7 m³/h)	20 gpm (4.5 m³/h)	30 gpm (6.8 m³/h)	65 gpm (14.8 m³/h)
Max. Continuous Flow	160 gpm (36 m³/h)	200 gpm (45.4 m³/h)	450 gpm (102.2 m³/h)	1000 gpm (227.1 m³/h)	2000 gpm (454 m³/h)	3500 gpm (795 m³/h)	5500 gpm (1250 m³/h)	6200 gpm (1408 m³/h)
Maximum Intermittent Flow	200 gpm (45.4 m³/h)	310 gpm (70.4 m³/h)	550 gpm (124.9 m³/h)	1250 gpm (284 m³/h)	2500 gpm (568 m³/h)	4500 gpm (1022 m³/h)	7000 gpm (1590 m³/h)	8800 gpm (1988 m³/h)
Pressure Loss at Max. Continuous Flow	3.8 psi (0.26 bar)	3.1 psi (0.21 bar)	1.8 psi (0.12 bar)	7.3 psi (0.50 bar)	4.8 psi (0.33 bar)	2.5 psi (0.17 bar)	1.6 psi (0.11 bar)	0.8 psi (0.05 bar)
Pressure Loss at Max. Continuous Flow: With Integral Strainer	9.9 psi (0.68 bar)	8.3 psi (0.57 bar)	5 psi (0.43 bar)	17.8 psi (1.2 bar)	—			
Max. Operating Pressure	150 psi (10 bar)							
Max. Operating Temperature	120° F (49° C)							
Integral Strainer	Optional on 2 in. through 4 in. meters. Built into inlet end. Removable cover plate permits access to strainer for cleaning.				—			
Optional External Strainer	—	Available for Models 200, 450, 1000, 2000, 3500, 5500 and 6200.						
Test Plug	Standard with integral strainer; optional for other models.				Optional for Models 2000 and 3500.		—	

MATERIALS

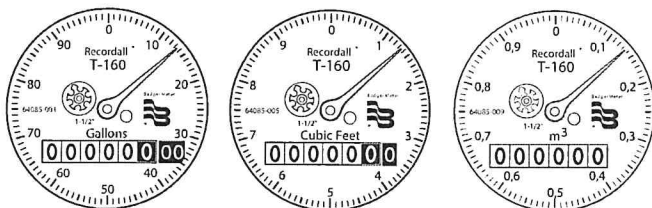
Meter Housing	Lead-free alloy (EXCEPTION: Model 6200 meter housing is blue epoxy-coated cast iron)
Turbo Head	Lead-free alloy
Nose Cone & Straightening Vanes	Thermoplastic
Rotor	Thermoplastic
Rotor Radial Bearings	Lubricated thermoplastic
Rotor Thruster Bearing	Sapphire jewels
Rotor Bearing Pivots	Passivated 316 stainless steel
Calibration Mechanism	Stainless steel & thermoplastic
Magnet	Ceramic
Trim	Stainless steel
Register Housing & Cover	Thermoplastic or bronze
Integral Strainer & Trim	Stainless steel

REGISTERS / ENCODERS

Standard—Sweep-Hand Registration

The standard register is a straight-reading, permanently sealed magnetic drive register. Dirt, moisture, tampering and lens fogging problems are eliminated. The register has a six-odometer wheel totalization display, 360° test circle with center sweep hand, and flow finder to detect leaks. Register gearing is made of self-lubricating engineered polymer, which minimizes friction and provides long life. The multi-position register simplifies meter installation and reading. The register capacity for the 1-1/2 in., 2 in., 3 in. and 4 in. meters is 100,000,000 gallons (10,000,000 ft³, 1,000,000 m³). The register capacity for the 6 in., 8 in., and 10 in. meters is 1,000,000,000 gallons (100,000,000 ft³, 10,000,000 m³). The high-flow register capacity for the 12 in. meter is 10,000,000,000 gallons (1,000,000,000 ft³, 10,000,000 m³).

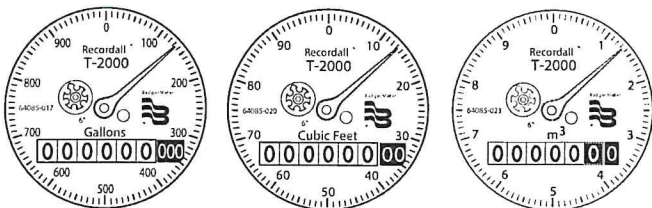
Registers for 1-1/2 in., 2 in., 3 in. and 4 in. Meters



Sweep Hand Revolution

Meter Model	Gallon	Cubic Feet	Cubic Meter
160	100	10	1
200	100	10	1
450	100	10	1
1000	100	10	1

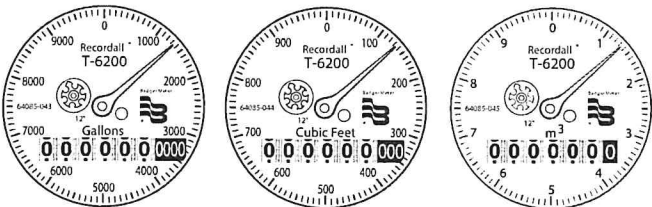
Registers for 6 in., 8 in. and 10 in. Meters



Sweep Hand Revolution

Meter Model	Gallon	Cubic Feet	Cubic Meter
2000	1000	100	10
3500	1000	100	10
5500	1000	100	10

Registers for 12 in. Meters



Sweep Hand Revolution

Meter Model	Gallon	Cubic Feet	Cubic Meter
6200	10000	1000	10

Optional—Encoders for AMR/AMI Reading Solutions

AMR/AMI solutions are available for all Recordall Disc Series meters. All reading options can be removed from the meter without disrupting water service. Badger Meter encoders provide years of reliable, accurate readings for a variety of applications and are also available pre-wired to Badger Meter approved AMR/AMI solutions. See details at www.badgermeter.com.

PHYSICAL DIMENSIONS OF METERS WITHOUT STRAINER

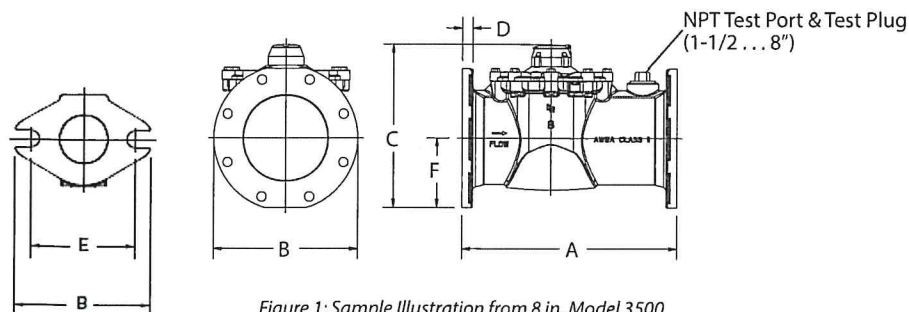


Figure 1: Sample Illustration from 8 in. Model 3500

Turbo Series Model	200	200	450	1000	2000	3500	5500	6200
Meter Flanges	2 in. Elliptical	2 in. Round	3 in. Round	4 in. Round	6 in. Round	8 in. Round	10 in. Round	12 in. Round
Meter & Pipe Size	2 in. (50 mm)	2 in. (50 mm)	3 in. (80 mm)	4 in. (100 mm)	6 in. (150 mm)	8 in. (200 mm)	10 in. (250 mm)	12 in. (300 mm)
Net Weight	14.9 lb (6.8 kg)	17.4 lb (7.9 kg)	31 lb (14.1 kg)	40 lb (18.1 kg)	77 lb (35 kg)	123 lb (55.7 kg)	210 lb (95.3 kg)	262 lb (118.8 kg)
Shipping Weight	16.4 lb (7.4 kg)	18.9 lb (8.6 kg)	34 lb (15.4 kg)	45 lb (20.4 kg)	89 lb (40.4 kg)	147 lb (66.6 kg)	235 lb (106.6 kg)	286 lb (129.7 kg)
Qty. of Bolts	2	4	4	8	8	8	12	12
NPT Test Port & Test Plug (optional)	1-1/2 in. (40 mm)	1-1/2 in. (40 mm)	2 in. (50 mm)	2 in. (50 mm)	2 in. (50 mm)	2 in. (50 mm)	—	—
Length (A)	10 in. (254 mm)	10 in. (254 mm)	12 in. (305 mm)	14 in. (356 mm)	18 in. (457 mm)	20 in. (508 mm)	26 in. (660.4 mm)	19-11/16 in. (500 mm)
Width (B)	5-27/32 in. (148 mm)	6 in. (152 mm)	7-1/2 in. (191 mm)	9 in. (229 mm)	11 in. (280 mm)	13-1/2 in. (343 mm)	16 in. (406.4 mm)	19 in. (482 mm)
Height (C)	6-1/2 in. (165 mm)	7-3/32 in. (180 mm)	8-11/16 in. (220 mm)	9-21/32 in. (245 mm)	13-5/16 in. (338 mm)	15-3/16 in. (385 mm)	17-15/32 in. (443 mm)	19-11/16 in. (500 mm)
Flange (D)	25/32 in. (20 mm)	5/8 in. (16 mm)	3/4 in. (19 mm)	13/16 in. (21 mm)	7/8 in. (22 mm)	1 in. (25 mm)	1-1/16 in. (27 mm)	1.26 in. (32 mm)
Bolt Circle (E)	4-1/2 in. (114 mm)	4-3/4 in. (121 mm)	6 in. (152 mm)	7-1/2 in. (191 mm)	9-1/2 in. (241 mm)	11-3/4 in. (298 mm)	14-1/4 in. (362 mm)	17 in. (432 mm)
Centerline (F)	2-1/16 in. (52 mm)	2-5/8 in. (67 mm)	3-11/32 in. (85 mm)	4-5/16 in. (109 mm)	5-1/4 in. (133 mm)	6-3/8 in. (162 mm)	7-7/8 in. (199.4 mm)	8-7/8 in. (226 mm)

PHYSICAL DIMENSIONS OF METERS WITH INTEGRAL STRAINER

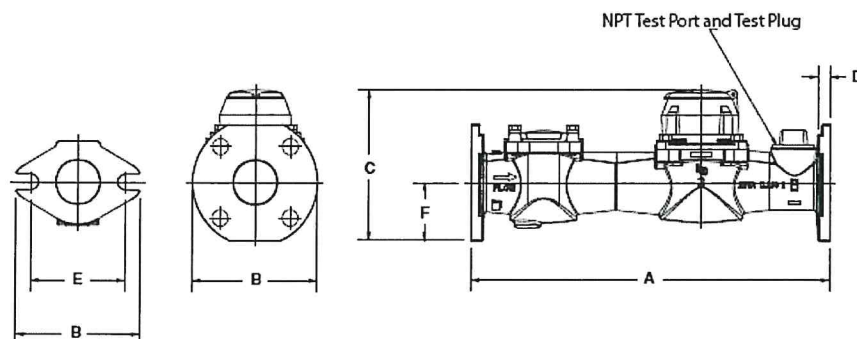
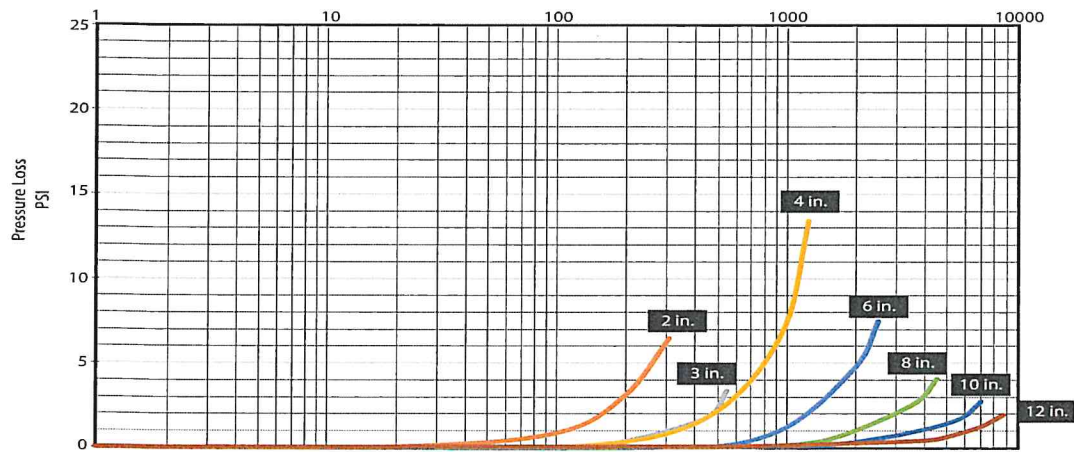


Figure 2: Physical dimensions

Turbo Series Model	160	200	200	450	1000
Meter Flanges	Elliptical	Elliptical	Round	Round	Round
Meter & Pipe Size	1-1/2 in. (40 mm)	2 in. (50 mm)	2 in. (50 mm)	3 in. (80 mm)	4 in. (100 mm)
Net Weight	14.3 lb (6.5 kg)	24 lb (11 kg)	26 lb (12 kg)	49 lb (22 kg)	60 lb (27.22 kg)
Shipping Weight	16.8 lb (7.6 kg)	28 lb (13 kg)	30 lb (14 kg)	55 lb (25 kg)	70 lb (31.75 kg)
Number of Bolts	2	2	4	4	8
NPT Test Port & Test Plug (Standard)	1 in. (25.4 mm)	1-1/2 in. (40 mm)	1-1/2 in. (40 mm)	2 in. (50 mm)	2 in. (50 mm)
Length (A)	13 in. (330 mm)	17 in. (432 mm)	17 in. (432 mm)	19 in. (483 mm)	23 in. (584 mm)
Width (B)	5-7/32 in. (133 mm)	5-27/32 in. (148 mm)	6 in. (152 mm)	7-1/2 in. (191 mm)	9 in. (229 mm)
Height (C)	6-9/32 in. (159 mm)	6-1/2 in. (165 mm)	7-3/32 in. (180 mm)	8-15/16 in. (227 mm)	9-21/32 in. (245 mm)
Flange (D)	51/64 in. (20 mm)	27/32 in. (47 mm)	5/8 in. (16 mm)	27/32 in. (21 mm)	13/16 in. (21 mm)
Bolt Circle (E)	4 in. (102 mm)	4-1/2 in. (114 mm)	4-3/4 in. (121 mm)	6 in. (152 mm)	7-1/2 in. (191 mm)
Centerline (F)	1-27/32 in. (47 mm)	2-1/16 in. (52 mm)	2-5/8 in. (67 mm)	3-19/32 in. (91 mm)	4-5/16 in. (109 mm)

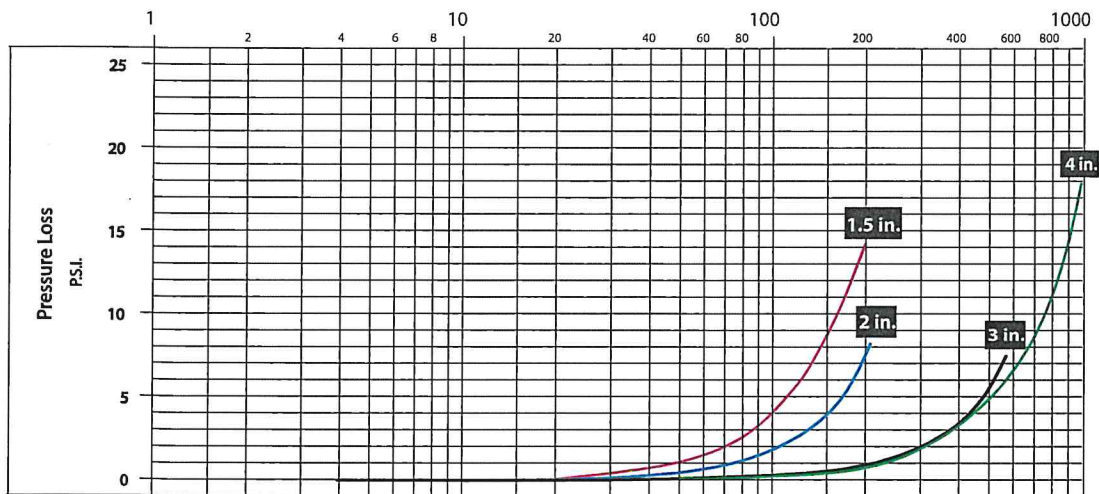
PRESSURE LOSS CHART FOR METERS WITHOUT STRAINER

Rate of flow in gallons per minute (gpm)



PRESSURE LOSS CHART FOR METERS WITH INTEGRAL STRAINER

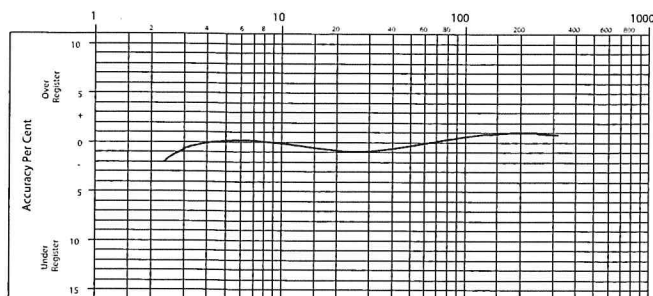
Rate of flow in gallons per minute (gpm)



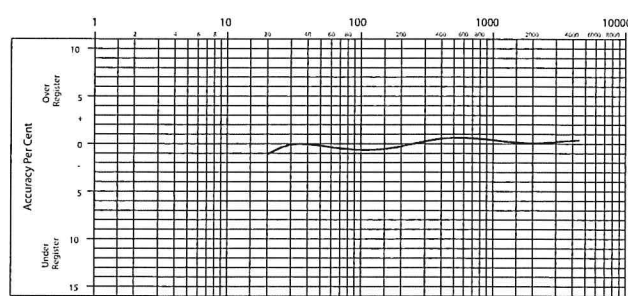
ACCURACY CHARTS FOR METERS WITHOUT STRAINER

Rate of flow in gallons per minute (gpm)

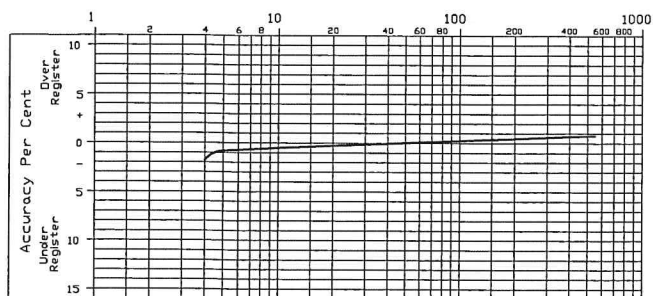
2 in. Meter



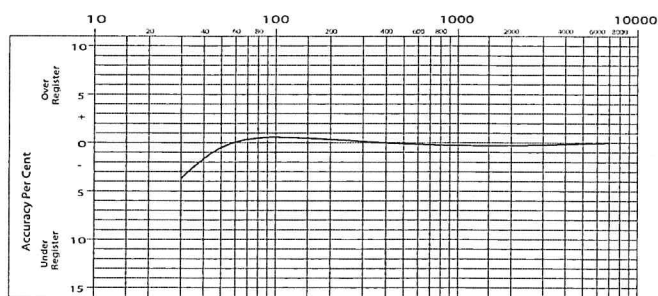
8 in. Meter



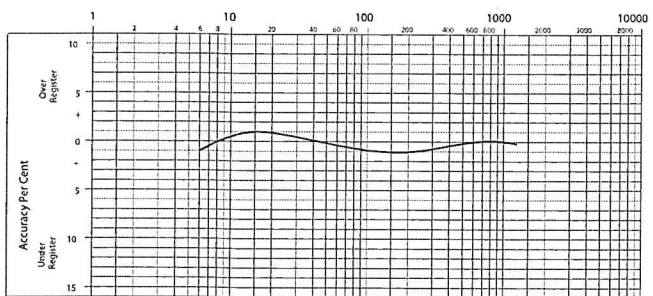
3 in. Meter



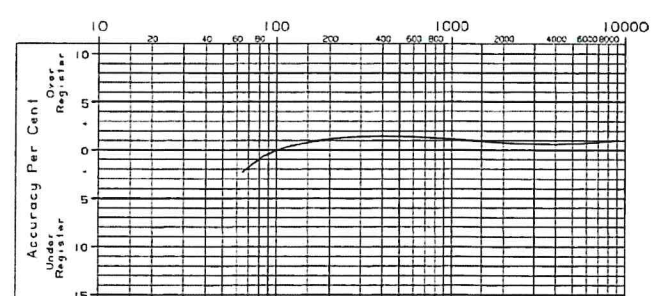
10 in. Meter



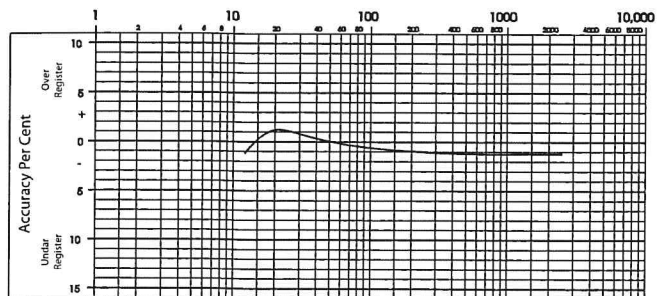
4 in. Meter



12 in. Meter



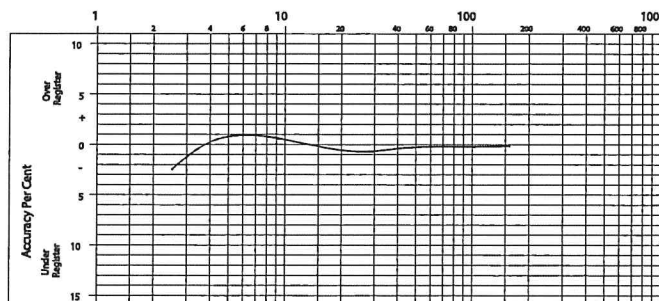
6 in. Meter



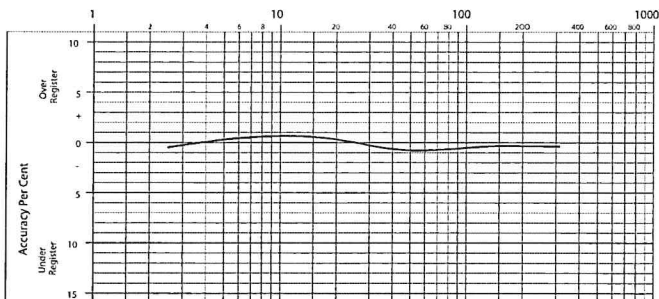
ACCURACY CHARTS FOR METERS WITH INTEGRAL STRAINER

Rate of flow in gallons per minute (gpm)

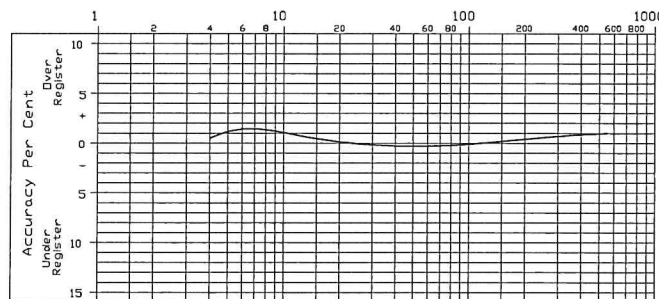
1-1/2 in. Meter



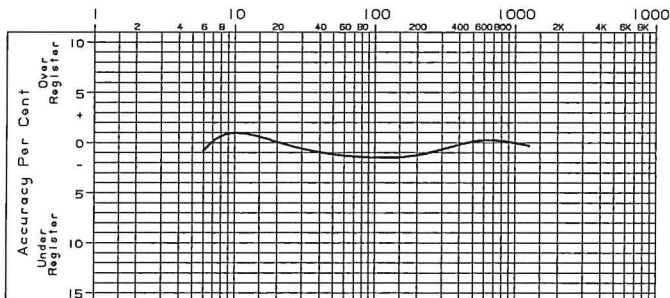
2 in. Meter



3 in. Meter



4 in. Meter



SMART WATER IS BADGER METER

RECORDALL is a registered trademark of Badger Meter, Inc. Other trademarks appearing in this document are the property of their respective entities. Due to continuous research, product improvements and enhancements, Badger Meter reserves the right to change product or system specifications without notice, except to the extent an outstanding contractual obligation exists. © 2019 Badger Meter, Inc. All rights reserved.

www.badgermeter.com

The Americas | Badger Meter | 4545 West Brown Deer Rd | PO Box 245036 | Milwaukee, WI 53224-9536 | 800-876-3837 | 414-355-0400
 México | Badger Meter de las Américas, S.A. de C.V. | Pedro Luis Ogazón N°32 | Esq. Angelina N°24 | Colonia Guadalupe Inn | CP 01050 | México, DF | México | +52-55-5662-0882
 Europe, Eastern Europe Branch Office (for Poland, Latvia, Lithuania, Estonia, Ukraine, Belarus) | Badger Meter Europe | ul. Korfanteo 6 | 44-193 Knurow | Poland | +48-32-236-8787
 Europe, Middle East and Africa | Badger Meter Europa GmbH | Nurtlinger Str 76 | 72639 Neuffen | Germany | +49-7025-9208-0
 Europe, Middle East Branch Office | Badger Meter Europe | PO Box 341442 | Dubai Silicon Oasis, Head Quarter Building, Wing C, Office #C209 | Dubai / UAE | +971-4-371 2503
 Slovakia | Badger Meter Slovakia s.r.o. | Raciarska 109/B | 831 02 Bratislava, Slovakia | +421-2-44 63 83 01
 Asia Pacific | Badger Meter | 80 Marine Parade Rd | 19-07 Parkway Parade | Singapore 419269 | +65-63464836
 Switzerland | Badger Meter Swiss AG | Mittelholzerstrasse 8 | 3006 Bern | Switzerland | +41-31-932 01 11

Legacy Document Numbers: RTS-T-1-1/2, 3, 4, 6, 8, 10 and 12; RTS-T-1 1-1/2, 2, 3, and 4



Badger Meter

Recordall® Turbo Series Meters

PRODUCTS COVERED

This warranty shall apply to all Recordall® Turbo Series Meters, sizes 1-1/2...20 inch, Turbo Series head assemblies and the local registers used with these meters (collectively "Product") sold on or after February 24, 2020. This warranty is extended only to utilities, municipalities, other commercial users and authorized Badger Meter, Inc. distributors, hereafter referred to as "Customer" and does NOT apply to consumers or any person or entity who is not an original customer of Badger Meter or its authorized distributors.

MATERIALS AND WORKMANSHIP

Badger Meter warrants Product to be free from defects in materials and workmanship appearing within the following time frames:

Bronze Housing

One (1) year and six (6) months after shipment from Badger Meter.

Local Registers Supplied with the Meters Listed Herein

Five (5) years and six (6) months after shipment from Badger Meter.

METER ACCURACY

The meter Product will meet or exceed accuracy standards of AWWA Standard C701 for one (1) year and six (6) months after shipment from Badger Meter. AWWA does not provide a standard for 1-1/2 inch turbo meters. However, the typical operating range for the 1-1/2 inch Recordall Turbo Series Meter meets the accuracy requirements of this standard.

PRODUCT RETURNS

Any Product proved to the satisfaction of Badger Meter to have failed the foregoing warranties will, at the option of Badger Meter, be repaired or replaced without charge to the Customer. Any eligible Product repaired or replaced by Badger Meter will retain the original Product's warranty based on the original Product purchase date, at Badger Meter's sole discretion. The Badger Meter obligation hereunder shall be limited to such repair and replacement and shall be conditioned upon Badger Meter receiving written notice of any alleged defect within ten (10) days after its discovery. This exclusive remedy shall not be deemed to have failed its essential purpose so long as Badger Meter is willing and able to replace defective products or issue a credit to purchaser within a reasonable time of proof to Badger Meter that a defect is involved. Product returns must be shipped by the Customer prepaid F.O.B. to the nearest Badger Meter factory or distribution center. The Customer shall be responsible for all direct and indirect costs associated with removing the original Product and reinstalling the repaired or replacement Product.

LIMITS OF LIABILITY

This warranty shall not apply to Product repaired or altered by parties other than Badger Meter. The foregoing warranty applies only to the extent that the Product is installed, serviced and operated strictly in accordance with AWWA Standard C715 and AWWA M6 Manual, as applicable. The warranty shall not apply and shall be void with respect to Product exposed to conditions other than those detailed in the Badger Meter Product technical and/or operational literature, or which have been exposed to adverse installation conditions, damaged by any water conditions and/or water quality, including but not limited to foreign matter in the water such as dirt, sand, minerals, debris, deposits, biofilms, extreme corrosivity, or other impurities, or which have been subject to passage of high-speed air slugs, vandalism, negligence, accident, acts of God, alteration, improper installation, operation or repair, or other circumstances which are beyond the reasonable control of Badger Meter. With respect to Product not manufactured by Badger Meter, the warranty obligations of Badger Meter shall in all respects conform and be limited to the warranty extended to Badger Meter by the supplier.

THE FOREGOING WARRANTIES ARE EXCLUSIVE AND IN LIEU OF ALL OTHER EXPRESS AND IMPLIED WARRANTIES WHATSOEVER, INCLUDING BUT NOT LIMITED TO IMPLIED WARRANTIES OF MERCHANTABILITY AND FITNESS FOR A PARTICULAR PURPOSE (except warranties of Title).

Any description of Product, whether in writing or made orally by Badger Meter or its agents, specifications, samples, models, bulletins, drawings, diagrams, engineering sheets, or similar materials used in connection with any Customer's order are for the sole purpose of identifying Product and shall not be construed as an express warranty. Any suggestions by Badger Meter or its agents regarding use, application or suitability of Product shall not be construed as an express warranty unless confirmed to be such in writing by Badger Meter.

Exclusion of Consequential Damages and Disclaimer of Other Liability

Badger Meter liability with respect to breaches of the foregoing warranty shall be limited as stated therein. Badger Meter liability shall in no event exceed the contract price. BADGER METER SHALL NOT BE SUBJECT TO AND DISCLAIMS: (1) ANY OTHER OBLIGATIONS OR LIABILITIES ARISING OUT OF BREACH OF CONTRACT OR OF WARRANTY (2) ANY OBLIGATIONS WHATSOEVER ARISING FROM TORT CLAIMS (INCLUDING NEGLIGENCE AND STRICT LIABILITY) OR ARISING UNDER OTHER THEORIES OF LAW WITH RESPECT TO PRODUCTS SOLD OR SERVICES RENDERED BY BADGER METER, OR ANY UNDERTAKINGS, ACTS OR OMISSIONS RELATING THERETO, AND (3) ALL CONSEQUENTIAL, INCIDENTAL AND CONTINGENT DAMAGES WHATSOEVER.

SMART WATER IS BADGER METER

Recordall is a registered trademark of Badger Meter, Inc. Other trademarks appearing in this document are the property of their respective entities.

Due to continuous research, product improvements and enhancements, Badger Meter reserves the right to change product or system specifications without notice, except to the extent an outstanding contractual obligation exists. © 2020 Badger Meter, Inc. All rights reserved.

www.badgermeter.com

The Americas | Badger Meter | 4545 West Brown Deer Rd | PO Box 245036 | Milwaukee, WI 53224-9536 | 800-876-3837 | 414-355-0400
México | Badger Meter de las Americas, S.A. de C.V. | Pedro Luis Ogazón N°32 | Esq. Angelina N°24 | Colonia Guadalupe Inn | CP 01050 | México, DF | México | +52-55-5662-0882
Europe, Middle East and Africa | Badger Meter Europa GmbH | Nürtinger Str 76 | 72639 Neuffen | Germany | +49-7025-9208-0
Europe, Middle East Branch Office | Badger Meter Europe | PO Box 341442 | Dubai Silicon Oasis, Head Quarter Building, Wing C, Office #C209 | Dubai / UAE | +971-4-371 2503
Asia Pacific | Badger Meter | 80 Marine Parade Rd | 19-07 Parkway Parade | Singapore 449269 | +65-63464836
Switzerland | Badger Meter Swiss AG | Mittelholzerstrasse 8 | 3006 Bern | Switzerland | +41-31-932 01 11

Legacy Document #: RTS-W-1-EN



Aqua-Metric Sales Company
16914 Alamo Parkway, Building 2
Selma, Texas 78154
Phone: (210) 967-6300
Fax: (210) 967-6305

Primary Contact
Gary Ragusa
Southeast Territory Manager
Phone: (504) 251-0140
Email: gary.ragusa@aqua-metric.com

Proposal Response Contact
Kristy Segarra
Manager, Bids and Proposals
Phone: (210) 967-6300
Email: kristy.segarra@aqua-metric.com

Sensus Contact
Jon Tyson
Account Development Manager
Phone: (919) 428-4649
Email: jon.tyson@xylem.com



Bid Number: 50-00132238

**Two (2) Year Contract for the Supply of
Residential Water Meters and Assemblies
for the Jefferson Parish Department of
Engineering**

Due: Thursday, October 15, 2020 at 2:00 PM

Jefferson Parish
Purchasing Department
200 Derbigny Street
General Governmental Building, Suite 4400
Gretna, LA 70053
Donna Reamey
Dreamey@jeffparish.net
Phone: (501) 364-2684

Louisiana Contractor's License No: 62904, Exp.: March 1, 2021



October 15, 2020

Donna Reamey
Jefferson Parish, Purchasing Department
200 Derbingy Street
General Government Building, Suite 4400
Gretna, LA 70053

RE: Bid No.: 50-00132238; Residential Water Meters and Assemblies

Dear Ms. Reamey,

Thirkettle Corporation dba Aqua-Metric Sales Company is pleased to propose our water meter solution to Jefferson Parish for Bid Number 50-00132238, Two (2) Year Contract for the Supply of Residential Water Meters and Assemblies for the Jefferson Parish Department of Engineering, due October 15, 2020.

Thirkettle Corporation has been involved in over one-hundred-and-eighty AMR/AMI system deployments, sized from 300 to more than 100,000 meters, and served the utility sector in multiple states for over twenty-five years. Our all-inclusive, turnkey approach makes us unique to the industry and our customers, whom we view as partners. The enclosed proposal provides Sensus' revolutionary residential SR11 and OMNI R2 water meters capable of both manual readings and integrating into Jefferson Parish's current and future electronic reading system of choice.

We understand additional options are being evaluated by Jefferson Parish, but rest assured, when a Utility chooses partnership with Aqua-Metric and Sensus they are receiving proven technology with best-in-class service that does not have an expiration date. We will not disappoint you, and your decision to partner with us will not be regretted. We appreciate the opportunity and thank you in advance for your time and thoughtful consideration.

Sincerely,



Kristy Segarra
Manager, Bids & Proposals
Aqua-Metric Sales Company
Phone: (210) 967-6300
Email: kristy.segarra@aqua-metric.com



AIA Document A310™ – 2010

Bid Bond

Bid Bond No: N/A

CONTRACTOR:

(Name, legal status and address)

Thirkettle Corporation dba Aqua Metric
Sales Company
4050 Flat Rock Drive
Riverside, CA 92505

OWNER:

(Name, legal status and address)

Jefferson Parrish Department of Purchasing
200 Derbigny Street
Jefferson Parrish, LA 70053

BOND AMOUNT:

Five Percent of the Total Amount Bid (5% of Bid Amount)

SURETY:

(Name, legal status and principal place
of business)

Harco National Insurance Company
702 Oberlin Road
Raleigh, NC 27605

This document has important legal
consequences. Consultation with
an attorney is encouraged with
respect to its completion or
modification.

Any singular reference to
Contractor, Surety, Owner or
other party shall be considered
plural where applicable.

PROJECT:

(Name, location or address, and Project number, if any)

50-00132238 Supply of Residential Water Meters and Assemblies for the Project Number, if any: 50-00132238
Jefferson Parish Department of Engineering

The Contractor and Surety are bound to the Owner in the amount set forth above, for the payment of which the Contractor and Surety bind themselves, their heirs, executors, administrators, successors and assigns, jointly and severally, as provided herein. The conditions of this Bond are such that if the Owner accepts the bid of the Contractor within the time specified in the bid documents, or within such time period as may be agreed to by the Owner and Contractor, and the Contractor either (1) enters into a contract with the Owner in accordance with the terms of such bid, and gives such bond or bonds as may be specified in the bidding or Contract Documents, with a surety admitted in the jurisdiction of the Project and otherwise acceptable to the Owner, for the faithful performance of such Contract and for the prompt payment of labor and material furnished in the prosecution thereof; or (2) pays to the Owner the difference, not to exceed the amount of this Bond, between the amount specified in said bid and such larger amount for which the Owner may in good faith contract with another party to perform the work covered by said bid, then this obligation shall be null and void, otherwise to remain in full force and effect. The Surety hereby waives any notice of an agreement between the Owner and Contractor to extend the time in which the Owner may accept the bid. Waiver of notice by the Surety shall not apply to any extension exceeding sixty (60) days in the aggregate beyond the time for acceptance of bids specified in the bid documents, and the Owner and Contractor shall obtain the Surety's consent for an extension beyond sixty (60) days.

If this Bond is issued in connection with a subcontractor's bid to a Contractor, the term Contractor in this Bond shall be deemed to be Subcontractor and the term Owner shall be deemed to be Contractor.

When this Bond has been furnished to comply with a statutory or other legal requirement in the location of the Project, any provision in this Bond conflicting with said statutory or legal requirement shall be deemed deleted herefrom and provisions conforming to such statutory or other legal requirement shall be deemed incorporated herein. When so furnished, the intent is that this Bond shall be construed as a statutory bond and not as a common law bond.

Signed and sealed this 8th day of October 2020

Thirkettle Corporation dba Aqua Metric Sales Company

(Principal)

(Seal)

K. J. Kistysgarra
(Title) Manager, Bids & Proposals

Harco National Insurance Company

(Surety)

(Seal)

(Title) Emilie George, Attorney-in-Fact



(Witness)

Christopher Newville

(Witness)

CALIFORNIA ALL-PURPOSE ACKNOWLEDGMENT

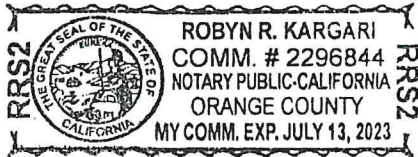
A notary public or other officer completing this certificate verifies only the identity of the individual who signed the document to which this certificate is attached, and not the truthfulness, accuracy, or validity of that document.

STATE OF CALIFORNIA

County of Orange }

On OCT 08 2020 before me, Robyn R. Kargari, Notary Public,
Date Insert Name of Notary exactly as it appears on the official seal

personally appeared Emilie George
Name(s) of Signer(s)



Place Notary Seal Above

who proved to me on the basis of satisfactory evidence to be the person(s) whose name(s) is/are subscribed to the within instrument and acknowledged to me that he/she/they executed the same in his/her/their authorized capacity(ies), and that by his/her/their signature(s) on the instrument the person(s), or the entity upon behalf of which the person(s) acted, executed the instrument.

I certify under PENALTY OF PERJURY under the laws of the State of California that the foregoing paragraph is true and correct.

Witness my hand and official seal.

Signature [Signature]
Signature of Notary Public Robyn R. Kargari

OPTIONAL

Though the information below is not required by law, it may prove valuable to persons relying on the document and could prevent fraudulent removal and reattachment of the form to another document.

Description of Attached Document

Title or Type of Document: _____

Document Date: _____ Number of Pages: _____

Signer(s) Other Than Named Above: _____

Capacity(ies) Claimed by Signer(s)

Signer's Name: _____

- ☐ Individual
☐ Corporate Officer — Title(s): _____
☐ Partner ☐ Limited ☐ General
☐ Attorney in Fact
☐ Trustee
☐ Guardian or Conservator
☐ Other: _____

RIGHT THUMBPRINT
OF SIGNER

Top of thumb here

Signer is Representing: _____

Signer's Name: _____

- ☐ Individual
☐ Corporate Officer — Title(s): _____
☐ Partner ☐ Limited ☐ General
☐ Attorney in Fact
☐ Trustee
☐ Guardian or Conservator
☐ Other: _____

RIGHT THUMBPRINT
OF SIGNER

Top of thumb here

Signer is Representing: _____

POWER OF ATTORNEY

Bond # N/A

HARCO NATIONAL INSURANCE COMPANY INTERNATIONAL FIDELITY INSURANCE COMPANY

Member companies of IAT Insurance Group, Headquartered: 702 Oberlin Road, Raleigh, North Carolina 27605

KNOW ALL MEN BY THESE PRESENTS: That HARCO NATIONAL INSURANCE COMPANY, a corporation organized and existing under the laws of the State of Illinois, and INTERNATIONAL FIDELITY INSURANCE COMPANY, a corporation organized and existing under the laws of the State of New Jersey, and having their principal offices located respectively in the cities of Rolling Meadows, Illinois and Newark, New Jersey, do hereby constitute and appoint

STEPHANIE HOANG, P. AUSTIN NEFF, EMILIE GEORGE, IRENE LUONG, JAMES W. MOILANEN,
YUNG T. MULLICK

Mission Viejo, CA

their true and lawful attorney(s)-in-fact to execute, seal and deliver for and on its behalf as surety, any and all bonds and undertakings, contracts of indemnity and other writings obligatory in the nature thereof, which are or may be allowed, required or permitted by law, statute, rule, regulation, contract or otherwise, and the execution of such instrument(s) in pursuance of these presents, shall be as binding upon the said HARCO NATIONAL INSURANCE COMPANY and INTERNATIONAL FIDELITY INSURANCE COMPANY, as fully and amply, to all intents and purposes, as if the same had been duly executed and acknowledged by their regularly elected officers at their principal offices.

This Power of Attorney is executed, and may be revoked, pursuant to and by authority of the By-Laws of HARCO NATIONAL INSURANCE COMPANY and INTERNATIONAL FIDELITY INSURANCE COMPANY and is granted under and by authority of the following resolution adopted by the Board of Directors of INTERNATIONAL FIDELITY INSURANCE COMPANY at a meeting duly held on the 13th day of December, 2018 and by the Board of Directors of HARCO NATIONAL INSURANCE COMPANY at a meeting held on the 13th day of December, 2018.

"RESOLVED, that (1) the Chief Executive Officer, President, Executive Vice President, Senior Vice President, Vice President, or Secretary of the Corporation shall have the power to appoint, and to revoke the appointments of, Attorneys-in-Fact or agents with power and authority as defined or limited in their respective powers of attorney, and to execute on behalf of the Corporation and affix the Corporation's seal thereto, bonds, undertakings, recognizances, contracts of indemnity and other written obligations in the nature thereof or related thereto; and (2) any such Officers of the Corporation may appoint and revoke the appointments of joint-control custodians, agents for acceptance of process, and Attorneys-in-fact with authority to execute waivers and consents on behalf of the Corporation; and (3) the signature of any such Officer of the Corporation and the Corporation's seal may be affixed by facsimile to any power of attorney or certification given for the execution of any bond, undertaking, recognizance, contract of indemnity or other written obligation in the nature thereof or related thereto, such signature and seals when so used whether heretofore or hereafter, being hereby adopted by the Corporation as the original signature of such officer and the original seal of the Corporation, to be valid and binding upon the Corporation with the same force and effect as though manually affixed."

IN WITNESS WHEREOF, HARCO NATIONAL INSURANCE COMPANY and INTERNATIONAL FIDELITY INSURANCE COMPANY have each executed and attested these presents on this 31st day of December, 2019



STATE OF NEW JERSEY
County of Essex

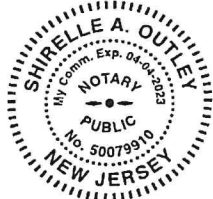
Kenneth Chapman

Executive Vice President, Harco National Insurance Company
and International Fidelity Insurance Company

STATE OF ILLINOIS
County of Cook



On this 31st day of December, 2019, before me came the individual who executed the preceding instrument, to me personally known, and, being by me duly sworn, said he is the therein described and authorized officer of HARCO NATIONAL INSURANCE COMPANY and INTERNATIONAL FIDELITY INSURANCE COMPANY; that the seals affixed to said instrument are the Corporate Seals of said Companies; that the said Corporate Seals and his signature were duly affixed by order of the Boards of Directors of said Companies.



IN TESTIMONY WHEREOF, I have hereunto set my hand affixed my Official Seal, at the City of Newark, New Jersey the day and year first above written.

Shirelle A. Outley a Notary Public of New Jersey
My Commission Expires April 4, 2023

CERTIFICATION

I, the undersigned officer of HARCO NATIONAL INSURANCE COMPANY and INTERNATIONAL FIDELITY INSURANCE COMPANY do hereby certify that I have compared the foregoing copy of the Power of Attorney and affidavit, and the copy of the Sections of the By-Laws of said Companies as set forth in said Power of Attorney, with the originals on file in the home office of said companies, and that the same are correct transcripts thereof, and of the whole of the said originals, and that the said Power of Attorney has not been revoked and is now in full force and effect.

IN TESTIMONY WHEREOF, I have hereunto set my hand on this day, October 08, 2020

Irene Martins, Assistant Secretary

DATE: 9/30/2020

Page: 5

BID NO.: 50-00132238

BID FORM
Non Public Works

All Public Work Projects are required to use the Louisiana Uniform Public Work Bid Form

All prices must be held firm unless an escalation provision is requested in this bid. Jefferson Parish will allow one escalation during the term of the contract, which may not exceed the U.S. Bureau of Labor Statistics National Index for all Urban Consumers, unadjusted 12 month figure. The most recently published figure issued at the time an adjustment is requested will be used. A request must be made in writing by the vendor, and the escalation will only be applied to purchases made after the request is made.

Are you requesting an escalation provision?

YES _____ NO X

MAXIMUM ESCALATION PERCENTAGE REQUESTED _____%

INITIAL BID PRICES WILL REMAIN FIRM THROUGH THE DATE OF November 2022 (Two Years from Date of Contract.)

For the purposes of comparison of bids when an escalation provision is requested, Jefferson Parish will apply the maximum escalation percentage quoted by the bidder to the period to which it is applied in the bid. The initial price and the escalation will be used to calculate the total bid price. It will be assumed, for comparison of prices only, that an equal amount of material or labor is purchased each month throughout the entire contract.

DELIVERY: FOB JEFFERSON PARISH

INDICATE DELIVERY DATE ON EQUIPMENT AND SUPPLIES

Stock Items: 5 Business Days

LOUISIANA CONTRACTOR'S LICENSE NO.: (if applicable)

62904

THIS SECTION MUST BE COMPLETED BY BIDDER:

FIRM NAME: Thirkettle Corporation dba Aqua-Metric Sales Company

ADDRESS: 16914 Alamo Parkway, Building 2

CITY, STATE: Selma, Texas

ZIP: 78154

TELEPHONE: (210) 967-6300

FAX: (210) 967-6305

EMAIL ADDRESS: Kristy.Segarra@aqua-metric.com

In the event that addenda are issued with this bid, bidders MUST acknowledge all addenda on the bid form. Bidder must acknowledge receipt of an addendum on the bid form as indicated. Failure to acknowledge any addendum on the bid form will result in bid rejection.

Acknowledge Receipt of Addenda: NUMBER: N/A - No Addendum Released

NUMBER: _____

NUMBER: _____

NUMBER: _____

TOTAL PRICE OF ALL BID ITEMS: \$ 379,648.00

AUTHORIZED
SIGNATURE: K. Segarra

Kristy Segarra

Printed Name

TITLE: Manager, Bids and Proposals

SIGNING INDICATES YOU HAVE READ AND COMPLY WITH THE INSTRUCTIONS AND CONDITIONS.

NOTE: All bids should be returned with the BID NUMBER and BID OPENING DATE indicated on the outside of the envelope submitted to the Purchasing Department.

DATE: 9/30/2020

Page 6

INVITATION TO BID FROM JEFFERSON PARISH - continued

BID NO.: 50-00132238

SEALED BID

ITEM NUMBER	QUANTITY	U/M	DESCRIPTION OF ARTICLES	UNIT PRICE QUOTED	TOTALS
1	3,000.00	EA	TWO YEAR CONTRACT FOR THE SUPPLY OF RESIDENTIAL WATER METERS AND ASSEMBLIES FOR THE JEFFERSON PARISH DEPARTMENT OF ENGINEERING.		
			0010 5/8 INCH X 3/4 INCH POSITIVE DISPLACEMENT WATER METER RATED AT 25 GPM	\$81.11	\$243,330.00
2	500.00	EA	TYPICAL OPERATING RANGE - GROUP 1 Brand: Sensus Model: SRII		
			0020 1 INCH POSITIVE DISPLACEMENT WATER METER RATED AT 70 GPM TYPICAL OPERATING RANGE - GROUP 1 Brand: Sensus Model: SRII	\$166.67	\$83,335.00
3	100.00	EA	0030 2 INCH TURBINE WATER METER RATED AT 310 GPM TYPICAL Brand: Sensus Model: OMNI R2	\$529.83	\$52,983.00
4	1.00	EA	0040 12 INCH TURBINE WATER METER RATED AT 8800 GPM	No Bid	No Bid
Note: Freight Allowed on Single Orders Exceeding \$10,000.00 Any Orders Less Than \$10,000 will Incur a 2.5% Increase to Cover Freight Charges.					

Please see Thirkettle Corporation's Corporate Resolution Attached.

CORPORATE RESOLUTION

EXCERPT FROM MINUTES OF MEETING OF THE BOARD OF DIRECTORS OF

INCORPORATED.

AT THE MEETING OF DIRECTORS OF _____
INCORPORATED, DULY NOTICED AND HELD ON _____,
A QUORUM BEING THERE PRESENT, ON MOTION DULY MADE AND SECONDED. IT
WAS:

RESOLVED THAT _____, BE AND IS HEREBY
APPOINTED, CONSTITUTED AND DESIGNATED AS AGENT AND ATTORNEY-IN-
FACT OF THE CORPORATION WITH FULL POWER AND AUTHORITY TO ACT ON
BEHALF OF THIS CORPORATION IN ALL NEGOTIATIONS, BIDDING, CONCERNS
AND TRANSACTIONS WITH THE PARISH OF JEFFERSON OR ANY OF ITS AGENCIES,
DEPARTMENTS, EMPLOYEES OR AGENTS, INCLUDING BUT NOT LIMITED TO, THE
EXECUTION OF ALL BIDS, PAPERS, DOCUMENTS, AFFIDAVITS, BONDS, SURETIES,
CONTRACTS AND ACTS AND TO RECEIVE ALL PURCHASE ORDERS AND NOTICES
ISSUED PURSUANT TO THE PROVISIONS OF ANY SUCH BID OR CONTRACT, THIS
CORPORATION HEREBY RATIFYING, APPROVING, CONFIRMING, AND ACCEPTING
EACH AND EVERY SUCH ACT PERFORMED BY SAID AGENT AND ATTORNEY-IN-
FACT.

I HEREBY CERTIFY THE FOREGOING TO BE
A TRUE AND CORRECT COPY OF AN
EXCERPT OF THE MINUTES OF THE ABOVE
DATED MEETING OF THE BOARD OF
DIRECTORS OF SAID CORPORATION, AND
THE SAME HAS NOT BEEN REVOKED OR
RESCINDED.

SECRETARY-TREASURER

DATE

**CORPORATE RESOLUTION ON AUTHORIZED REPRESENTATIVE
OF
THIRKETTLE CORPORATION**

We hereby certify that it was RESOLVED by a quorum of the directors of the Thirkettle Corporation, meeting this Tuesday, January 2, 2018, that Clint Arnold, Michael Cartwright, Chris Newville, Kristy Segarra, Jeremy Lancon, and Michael Wood be, and hereby are authorized to act on behalf of Thirkettle Corporation and its subsidiaries Aqua Metric Sales Company and Utiliuse as its representative in all business transactions conducted in the State of Louisiana, and:

That all above resolution was unanimously ratified by the Board of Directors at said meeting and the resolution has not been rescinded or amended and is now in full forces and effect and;

In authentication of the adoption of this resolution, we subscribe our names and affix the seal of the corporation this Tuesday, January 2, 2018.





Tommy Thirkettle
President/CEO



Lea Thirkettle
Vice President/Secretary

Non-Public Works Bid Affidavit Instructions

- **Affidavit is supplied as a courtesy to Affiants, but it is the responsibility of the affiant to insure the affidavit they submit to Jefferson Parish complies, in both form and content, with federal, state and parish laws.**
- **Affidavit must be signed by an authorized representative of the entity or the affidavit will not be accepted.**
- **Affidavit must be notarized or the affidavit will not be accepted.**
- **Notary must sign name, print name, and include bar/notary number, or the affidavit will not be accepted.**
- **Affiant MUST select either A or B when required or the affidavit will not be accepted.**
- **Affiants who select choice A must include an attachment or the affidavit will not be accepted.**
- **If both choice A and B are selected, the affidavit will not be accepted.**
- **Affidavit marked N/A will not be accepted.**
- **It is the responsibility of the Affiant to submit a new affidavit if any additional campaign contributions are made after the affidavit is executed but prior to the time the council acts on the matter.**

Instruction sheet may be omitted when submitting the affidavit

Non-Public Works Bid

AFFIDAVIT

STATE OF Texas

PARISH/COUNTY OF Guadalupe

BEFORE ME, the undersigned authority, personally came and appeared: Kristy Segarra
_____, (Affiant) who after being by me duly sworn, deposed and said that
he/she is the fully authorized Manager, Bids & Proposals Thirkettle Corporation dba
of Aqua-Metric Sales Company (Entity),
the party who submitted a bid in response to Bid Number 50-00132238, to the Parish of
Jefferson.

Affiant further said:

Campaign Contribution Disclosures

(Choose A or B, if option A is indicated please include the required attachment):

Choice A _____ Attached hereto is a list of all campaign contributions, including the date and amount of each contribution, made to current or former elected officials of the Parish of Jefferson by Entity, Affiant, and/or officers, directors and owners, including employees, owning 25% or more of the Entity during the two-year period immediately preceding the date of this affidavit or the current term of the elected official, whichever is greater. Further, Entity, Affiant, and/or Entity Owners have not made any contributions to or in support of current or former members of the Jefferson Parish Council or the Jefferson Parish President through or in the name of another person or legal entity, either directly or indirectly.

Choice B X there are **NO** campaign contributions made which would require disclosure under Choice A of this section.

Debt Disclosures

(Choose A or B, if option A is indicated please include the required attachment):

Choice A _____ Attached hereto is a list of all debts owed by the affiant to any elected or appointed official of the Parish of Jefferson, and any and all debts owed by any elected or appointed official of the Parish to the Affiant.

Choice B X _____ There are **NO** debts which would require disclosure under Choice A of this section.

Affiant further said:

That Affiant has employed no person, corporation, firm, association, or other organization, either directly or indirectly, to secure the public contract under which he received payment, other than persons regularly employed by the Affiant whose services in connection with the construction, alteration or demolition of the public building or project or in securing the public contract were in the regular course of their duties for Affiant; and

[The remainder of this page is intentionally left blank.]

That no part of the contract price received by Affiant was paid or will be paid to any person, corporation, firm, association, or other organization for soliciting the contract, other than the payment of their normal compensation to persons regularly employed by the Affiant whose services in connection with the construction, alteration or demolition of the public building or project were in the regular course of their duties for Affiant.

K. Segarra
Signature of Affiant

Kristy Segarra
Printed Name of Affiant

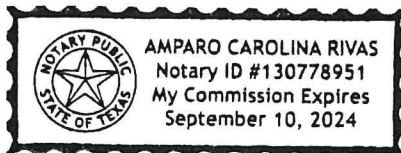
SWORN AND SUBSCRIBED TO BEFORE ME
ON THE 13th DAY OF October, 2020.

Amparo Carolina Rivas
Notary Public

Amparo Carolina Rivas
Printed Name of Notary

#130778951
Notary/Bar Roll Number

My commission expires Sep. 10, 2024.





CERTIFICATE OF LIABILITY INSURANCE

DATE (MM/DD/YYYY)

10/9/2020

THIS CERTIFICATE IS ISSUED AS A MATTER OF INFORMATION ONLY AND CONFERS NO RIGHTS UPON THE CERTIFICATE HOLDER. THIS CERTIFICATE DOES NOT AFFIRMATIVELY OR NEGATIVELY AMEND, EXTEND OR ALTER THE COVERAGE AFFORDED BY THE POLICIES BELOW. THIS CERTIFICATE OF INSURANCE DOES NOT CONSTITUTE A CONTRACT BETWEEN THE ISSUING INSURER(S), AUTHORIZED REPRESENTATIVE OR PRODUCER, AND THE CERTIFICATE HOLDER.

IMPORTANT: If the certificate holder is an ADDITIONAL INSURED, the policy(ies) must have ADDITIONAL INSURED provisions or be endorsed. If SUBROGATION IS WAIVED, subject to the terms and conditions of the policy, certain policies may require an endorsement. A statement on this certificate does not confer rights to the certificate holder in lieu of such endorsement(s).

PRODUCER Arthur J. Gallagher & Co. Insurance Brokers of CA, Inc, LIC # 0726293 100 Oceangate #850 Long Beach CA 90802	CONTACT NAME: PHONE (A/C, No, Ext): FAX (A/C, No): E-MAIL ADDRESS: Lejani_Sarian@aig.com														
INSURED Thirkettle Corporation Aqua-Metric Sales Company 4050 Flat Rock Drive Riverside CA 92505	<table><tr><th>INSURER(S) AFFORDING COVERAGE</th><th>NAIC #</th></tr><tr><td>INSURER A : Hanover American Insurance Company</td><td>36064</td></tr><tr><td>INSURER B : Allmerica Financial Benefit Insurance Co</td><td>41840</td></tr><tr><td>INSURER C : Hanover Insurance Company</td><td>22292</td></tr><tr><td>INSURER D :</td><td></td></tr><tr><td>INSURER E :</td><td></td></tr><tr><td>INSURER F :</td><td></td></tr></table>	INSURER(S) AFFORDING COVERAGE	NAIC #	INSURER A : Hanover American Insurance Company	36064	INSURER B : Allmerica Financial Benefit Insurance Co	41840	INSURER C : Hanover Insurance Company	22292	INSURER D :		INSURER E :		INSURER F :	
INSURER(S) AFFORDING COVERAGE	NAIC #														
INSURER A : Hanover American Insurance Company	36064														
INSURER B : Allmerica Financial Benefit Insurance Co	41840														
INSURER C : Hanover Insurance Company	22292														
INSURER D :															
INSURER E :															
INSURER F :															

COVERAGES**CERTIFICATE NUMBER:** 777514583**REVISION NUMBER:**

THIS IS TO CERTIFY THAT THE POLICIES OF INSURANCE LISTED BELOW HAVE BEEN ISSUED TO THE INSURED NAMED ABOVE FOR THE POLICY PERIOD INDICATED. NOTWITHSTANDING ANY REQUIREMENT, TERM OR CONDITION OF ANY CONTRACT OR OTHER DOCUMENT WITH RESPECT TO WHICH THIS CERTIFICATE MAY BE ISSUED OR MAY PERTAIN, THE INSURANCE AFFORDED BY THE POLICIES DESCRIBED HEREIN IS SUBJECT TO ALL THE TERMS, EXCLUSIONS AND CONDITIONS OF SUCH POLICIES. LIMITS SHOWN MAY HAVE BEEN REDUCED BY PAID CLAIMS.

INSR LTR	TYPE OF INSURANCE	ADDL INSD	SUBR WVD	POLICY NUMBER	POLICY EFF (MM/DD/YYYY)	POLICY EXP (MM/DD/YYYY)	LIMITS
A	<input checked="" type="checkbox"/> COMMERCIAL GENERAL LIABILITY <input type="checkbox"/> CLAIMS-MADE <input checked="" type="checkbox"/> OCCUR GEN'L AGGREGATE LIMIT APPLIES PER: <input checked="" type="checkbox"/> POLICY <input type="checkbox"/> PROJECT <input type="checkbox"/> LOC OTHER:	Y		ZZ3-A664940-05	7/1/2020	7/1/2021	EACH OCCURRENCE \$ 1,000,000 DAMAGE TO RENTED PREMISES (Ea occurrence) \$ 100,000 MED EXP (Any one person) \$ 10,000 PERSONAL & ADV INJURY \$ 1,000,000 GENERAL AGGREGATE \$ 2,000,000 PRODUCTS - COMP/OP AGG \$ 2,000,000 Emp Ben. \$ 1,000,000
B	<input checked="" type="checkbox"/> AUTOMOBILE LIABILITY <input checked="" type="checkbox"/> ANY AUTO <input type="checkbox"/> OWNED AUTOS ONLY <input type="checkbox"/> SCHEDULED AUTOS <input checked="" type="checkbox"/> HIRED AUTOS ONLY <input checked="" type="checkbox"/> NON-OWNED AUTOS ONLY	Y		AW3-A665023-05	7/1/2020	7/1/2021	COMBINED SINGLE LIMIT (Ea accident) \$ 1,000,000 BODILY INJURY (Per person) \$ BODILY INJURY (Per accident) \$ PROPERTY DAMAGE (Per accident) \$ \$
	<input type="checkbox"/> UMBRELLA LIAB <input type="checkbox"/> OCCUR <input type="checkbox"/> EXCESS LIAB <input type="checkbox"/> CLAIMS-MADE DED RETENTION \$						EACH OCCURRENCE \$ AGGREGATE \$ \$
C	WORKERS COMPENSATION AND EMPLOYERS' LIABILITY ANY PROPRIETOR/PARTNER/EXECUTIVE OFFICER/MEMBER EXCLUDED? (Mandatory in NH) <input type="checkbox"/> If yes, describe under DESCRIPTION OF OPERATIONS below	Y/N	N/A	WH3-A652982-05	7/1/2020	7/1/2021	<input checked="" type="checkbox"/> PER STATUTE <input type="checkbox"/> OTH-ER E.L. EACH ACCIDENT \$ 1,000,000 E.L. DISEASE - EA EMPLOYEE \$ 1,000,000 E.L. DISEASE - POLICY LIMIT \$ 1,000,000

DESCRIPTION OF OPERATIONS / LOCATIONS / VEHICLES (ACORD 101, Additional Remarks Schedule, may be attached if more space is required)

RE: Bid Number 50-00132238, Two (2) Year Contract for the Supply of Residential Water Meters and Assemblies for the Jefferson Parish Department of Engineering
The Jefferson Parish, its Districts, Departments, and Agencies under the direction of the Parish President and the Parish Council, is included as additional insured as respects to general liability and automobile liability, per policy form.

CERTIFICATE HOLDER**CANCELLATION**

Jefferson Parish
200 Derbingy Street, Suite 4400
Gretna LA 75003

SHOULD ANY OF THE ABOVE DESCRIBED POLICIES BE CANCELLED BEFORE THE EXPIRATION DATE THEREOF, NOTICE WILL BE DELIVERED IN ACCORDANCE WITH THE POLICY PROVISIONS.

AUTHORIZED REPRESENTATIVE

© 1988-2015 ACORD CORPORATION. All rights reserved.

THIS ENDORSEMENT CHANGES THE POLICY. PLEASE READ IT CAREFULLY.

BLANKET ADDITIONAL INSURED – PRIMARY AND NON-CONTRIBUTORY

This endorsement modifies insurance provided under the following:

BUSINESS AUTO COVERAGE FORM

A. The following is added to SECTION II – LIABILITY COVERAGE, Paragraph A.1. Who Is An Insured:

Additional Insured if Required by Contract

If you agree in a written contract, written agreement or written permit that a person or organization be added as an additional "insured" under this Coverage Part, such person or organization is an "insured"; but only to the extent that such person or organization qualifies as an "insured" under paragraph A.1.c. of this Section.

If you agree in a written contract, written agreement or written permit that a person or organization be added as an additional "insured" under this Coverage Part, the most we will pay on behalf of such additional "insured" is the lesser of:

- (1) The Limits of Insurance for liability coverage specified in the written contract, written agreement or written permit; or
- (2) The Limits of Insurance for Liability Coverage shown in the Declarations applicable to this Coverage Part.

Such amount shall be part of and not in addition to the Limits of Insurance shown in the Declarations applicable to this Coverage Part. Regardless of the number of covered "autos", "insureds", premiums paid, claims made or vehicles involved in the "accident", the most we will pay for the total of all damages and "covered pollution cost or expense" combined resulting from any one "accident" is the Limit of Insurance for Liability Coverage shown in the Declarations.

B. The following is added to SECTION IV – BUSINESS AUTO CONDITIONS, Paragraph B. General Conditions, subparagraph 5. Other Insurance:

Primary and Non-Contributory

If you agree in a written contract, written agreement or written permit that the insurance provided to a person or organization who qualifies as an additional "insured" under SECTION II – LIABILITY COVERAGE, Paragraph A.1. Who Is An Insured, subparagraph Additional Insured if Required by Contract is primary and non-contributory, the following applies:

The liability coverage provided by this Coverage Part is primary to any other insurance available to the additional "insured" as a Named Insured. We will not seek contribution from any other insurance available to the additional "insured" except:

- (1) For the sole negligence of the additional "insured"; or
- (2) For negligence arising out of the ownership, maintenance or use of any "auto" not owned by the additional "insured" or by you, unless that "auto" is a "trailer" connected to an "auto" owned by the additional "insured" or by you; or
- (3) When the additional "insured" is also an additional "insured" under another liability policy.

C. This endorsement will apply only if the "accident" occurs:

1. During the policy period;
2. Subsequent to the execution of the written contract or written agreement or the issuance of the written permit; and
3. Prior to the expiration of the period of time that the written contract, written agreement or written permit requires such insurance to be provided to the additional "insured".

D. Coverage provided to an additional "insured" will not be broader than coverage provided to any other "insured" under this Coverage Part.

ALL OTHER TERMS, CONDITIONS, AND EXCLUSIONS REMAIN UNCHANGED.

THIS ENDORSEMENT CHANGES THE POLICY. PLEASE READ IT CAREFULLY.

COMMERCIAL GENERAL LIABILITY BROADENING ENDORSEMENT

This endorsement modifies insurance provided under the following:

COMMERCIAL GENERAL LIABILITY COVERAGE PART

SUMMARY OF COVERAGES

1.	Additional Insured by Contract, Agreement or Permit	Included
2.	Additional Insured – Primary and Non-Contributory	Included
3.	Blanket Waiver of Subrogation	Included
4.	Bodily Injury Redefined	Included
5.	Broad Form Property Damage – Borrowed Equipment, Customers Goods & Use of Elevators	Included
6.	Knowledge of Occurrence	Included
7.	Liberalization Clause	Included
8.	Medical Payments – Extended Reporting Period	Included
9.	Newly Acquired or Formed Organizations - Covered until end of policy period	Included
10.	Non-owned Watercraft	51 ft.
11.	Supplementary Payments Increased Limits	
	- Bail Bonds	\$2,500
	- Loss of Earnings	\$1000
12.	Unintentional Failure to Disclose Hazards	Included
13.	Unintentional Failure to Notify	Included

This endorsement amends coverages provided under the Commercial General Liability Coverage Part through new coverages, higher limits and broader coverage grants.

1. Additional Insured by Contract, Agreement or Permit

The following is added to **SECTION II – WHO IS AN INSURED:**

Additional Insured by Contract, Agreement or Permit

- a. Any person or organization with whom you agreed in a written contract, written agreement or permit that such person or organization to add an additional insured on your policy is an additional insured only with respect to liability for "bodily injury", "property damage", or "personal and advertising injury" caused, in whole or in part, by your acts or omissions, or the acts or omissions of those acting on your behalf, but only with respect to:

- (1) "Your work" for the additional insured(s) designated in the contract, agreement or permit;

- (2) Premises you own, rent, lease or occupy; or

- (3) Your maintenance, operation or use of equipment leased to you.

- b. The insurance afforded to such additional insured described above:

- (1) Only applies to the extent permitted by law; and

- (2) Will not be broader than the insurance which you are required by the contract, agreement or permit to provide for such additional insured.

- (3) Applies on a primary basis if that is required by the written contract, written agreement or permit.
 - (4) Will not be broader than coverage provided to any other insured.
 - (5) Does not apply if the "bodily injury", "property damage" or "personal and advertising injury" is otherwise excluded from coverage under this Coverage Part, including any endorsements thereto.
- c. This provision does not apply:
- (1) Unless the written contract or written agreement was executed or permit was issued prior to the "bodily injury", "property damage", or "personal injury and advertising injury".
 - (2) To any person or organization included as an insured by another endorsement issued by us and made part of this Coverage Part.
 - (3) To any lessor of equipment:
 - (a) After the equipment lease expires; or
 - (b) If the "bodily injury", "property damage", "personal and advertising injury" arises out of sole negligence of the lessor
 - (4) To any:
 - (a) Owners or other interests from. whom land has been leased which takes place after the lease for the land expires; or
 - (b) Managers or lessors of premises if:
 - (i) The occurrence takes place after you cease to be a tenant in that premises; or
 - (ii) The "bodily injury", "property damage", "personal injury" or "advertising injury" arises out of structural alterations, new construction or demolition operations performed by or on behalf of the manager or lessor.
 - (5) To "bodily injury", "property damage" or "personal and advertising injury" arising out of the rendering of or the failure to render any professional services.
- This exclusion applies even if the claims against any insured allege negligence or other wrongdoing in the supervision, hiring, employment, training or monitoring of others by that insured, if the "occurrence" which caused the "bodily injury" or "property damage" or the offense which caused the "personal and

advertising injury" involved the rendering of or failure to render any professional services by or for you.

- d. With respect to the insurance afforded to these additional insureds, the following is added to **SECTION III – LIMITS OF INSURANCE**:

The most we will pay on behalf of the additional insured for a covered claim is the lesser of the amount of insurance:

- 1. Required by the contract, agreement or permit described in Paragraph a.; or
- 2. Available under the applicable Limits of Insurance shown in the Declarations.

This endorsement shall not increase the applicable Limits of Insurance shown in the Declarations.

2. Additional Insured – Primary and Non-Contributory

The following is added to **SECTION IV – COMMERCIAL GENERAL LIABILITY CONDITIONS**, Paragraph 4. Other insurance:

Additional Insured – Primary and Non-Contributory

If you agree in a written contract, written agreement or permit that the insurance provided to any person or organization included as an Additional Insured under **SECTION II – WHO IS AN INSURED**, is primary and non-contributory, the following applies:

If other valid and collectible insurance is available to the Additional Insured for a loss covered under Coverages A or B of this Coverage Part, our obligations are limited as follows:

a. Primary Insurance

This insurance is primary to other insurance that is available to the Additional Insured which covers the

Additional Insured as a Named Insured. We will not seek contribution from any other insurance available to the Additional Insured except:

- (1) For the sole negligence of the Additional Insured;
- (2) When the Additional Insured is an Additional Insured under another primary liability policy; or
- (3) when b. below applies.

If this insurance is primary, our obligations are not affected unless any of the other insurance is also primary. Then, we will share with all that other insurance by the method described in c. below.

b. Excess Insurance

(1) This insurance is excess over any of the other insurance, whether primary, excess, contingent or on any other basis:

- (a) That is Fire, Extended Coverage, Builder's Risk, Installation Risk or similar coverage for "your work";
- (b) That is Fire insurance for premises rented to the Additional Insured or temporarily occupied by the Additional Insured with permission of the owner;
- (c) That is insurance purchased by the Additional Insured to cover the Additional Insured's liability as a tenant for "property damage" to premises rented to the Additional Insured or temporarily occupied by the Additional Insured with permission of the owner; or
- (d) If the loss arises out of the maintenance or use of aircraft, "autos" or watercraft to the extent not subject to Exclusion g. of **SECTION I – COVERAGE A – BODILY INJURY AND PROPERTY DAMAGE LIABILITY**.

(2) When this insurance is excess, we will have no duty under Coverages A or B to defend the insured against any "suit" if any other insurer has a duty to defend the insured against that "suit". If no other insurer defends, we will undertake to do so, but we will be entitled to the insured's rights against all those other insurers.

(3) When this insurance is excess over other Insurance, we will pay only our share of the amount of the loss, if any, that exceeds the sum of:

- (a) The total amount that all such other insurance would pay for the loss in the absence of this insurance; and
- (b) The total of all deductible and self insured amounts under all that other insurance.

We will share the remaining loss, if any, with any other insurance that is not described in this Excess Insurance provision and was not bought specifically to apply in excess of the Limits of Insurance shown in the Declarations of this Coverage Part.

c. Method Of Sharing

If all of the other insurance permits contribution by equal shares, we will follow this method also. Under this approach each

insurer contributes equal amounts until it has paid its applicable limit of insurance or none of the loss remains, whichever comes first. If any of the other insurance does not permit contribution by equal shares, we will contribute by limits. Under this method, each insurer's share is based on the ratio of its applicable limit of insurance to the total applicable limits of insurance of all insurers

3. Blanket Waiver of Subrogation

The following is added to **SECTION IV – COMMERCIAL GENERAL LIABILITY CONDITIONS**, Paragraph 8. **Transfer Of Rights Of Recovery Against Others To Us:**

We waive any right of recovery we may have against any person or organization with whom you have a written contract that requires such waiver because of payments we make for damage under this coverage form. The damage must arise out of your activities under a written contract with that person or organization. This waiver applies only to the extent that subrogation is waived under a written contract executed prior to the "occurrence" or offense giving rise to such payments.

4. Bodily Injury Redefined

SECTION V – DEFINITIONS, Definition 3. "bodily injury" is replaced by the following:

3. "Bodily injury" means bodily injury, sickness or disease sustained by a person including death resulting from any of these at any time. "Bodily injury" includes mental anguish or other mental injury resulting from "bodily injury".

5. Broad Form Property Damage – Borrowed Equipment, Customers Goods, Use of Elevators

a. **SECTION I – COVERAGES, COVERAGE A – BODILY INJURY AND PROPERTY DAMAGE LIABILITY**, Paragraph 2. **Exclusions** subparagraph j. is amended as follows:

Paragraph (4) does not apply to "property damage" to borrowed equipment while at a jobsite and not being used to perform operations.

Paragraphs (3), (4) and (6) do not apply to "property damage" to "customers goods" while on your premises nor do they apply to the use of elevators at premises you own, rent, lease or occupy.

b. The following is added to **SECTION V – DEFINITIONS:**

24. "Customers goods" means property of your customer on your premises for the purpose of being:

- a. worked on; or
- b. used in your manufacturing process.
- c. The insurance afforded under this provision is excess over any other valid and collectible property insurance (including deductible) available to the insured whether primary, excess, contingent

6. Knowledge of Occurrence

The following is added to **SECTION IV – COMMERCIAL GENERAL LIABILITY CONDITIONS**, Paragraph 2. **Duties in the Event of Occurrence, Offense, Claim or Suit:**

- e. Notice of an "occurrence", offense, claim or "suit" will be considered knowledge of the insured if reported to an individual named insured, partner, executive officer or an "employee" designated by you to give us such a notice.

7. Liberalization Clause

The following is added to **SECTION IV – COMMERCIAL GENERAL LIABILITY CONDITIONS:**

Liberalization Clause

If we adopt any revision that would broaden the coverage under this Coverage Form without additional premium, within 45 days prior to or during the policy period, the broadened coverage will immediately apply to this Coverage Part.

8. Medical Payments – Extended Reporting Period

- a. **SECTION I – COVERAGES, COVERAGE C – MEDICAL PAYMENTS**, Paragraph 1. **Insuring Agreement**, subparagraph a.(3)(b) is replaced by the following:
 - (b) The expenses are incurred and reported to us within three years of the date of the accident; and
- b. This coverage does not apply if **COVERAGE C – MEDICAL PAYMENTS** is excluded either by the provisions of the Coverage Part or by endorsement.

9. Newly Acquired Or Formed Organizations

SECTION II – WHO IS AN INSURED, Paragraph 3.a. is replaced by the following:

- a. Coverage under this provision is afforded until the end of the policy period.

10. Non-Owned Watercraft

SECTION I – COVERAGES, COVERAGE A BODILY INJURY AND PROPERTY DAMAGE LIABILITY, Paragraph 2. **Exclusions**, subparagraph g.(2) is replaced by the following:

g. Aircraft, Auto Or Watercraft

(2) A watercraft you do not own that is:

- (a) Less than 51 feet long; and
- (b) Not being used to carry persons or property for a charge;

This provision applies to any person who, with your consent, either uses or is responsible for the use of a watercraft.

11. Supplementary Payments Increased Limits

SECTION I – SUPPLEMENTARY PAYMENTS COVERAGES A AND B, Paragraphs 1.b. and 1.d. are replaced by the following:

1.b. Up to \$2,500 for cost of bail bonds required because of accidents or traffic law violations arising out of the use of any vehicle to which the Bodily Injury Liability Coverage applies. We do not have to furnish these bonds.

1.d. All reasonable expenses incurred by the insured at our request to assist us in the investigation or defense of the claim or "suit", including actual loss of earnings up to \$1000 a day because of time off from work.

12. Unintentional Failure to Disclose Hazards

The following is added to **SECTION IV – COMMERCIAL GENERAL LIABILITY CONDITIONS**, Paragraph 6. **Representations:**

We will not disclaim coverage under this Coverage Part if you fail to disclose all hazards existing as of the inception date of the policy provided such failure is not intentional.

13. Unintentional Failure to Notify

The following is added to **SECTION IV – COMMERCIAL GENERAL LIABILITY CONDITIONS**, Paragraph 2. **Duties in the Event of Occurrence, Offense, Claim or Suit:**

Your rights afforded under this policy shall not be prejudiced if you fail to give us notice of an "occurrence", offense, claim or "suit", solely due to your reasonable and documented belief that the "bodily injury" or "property damage" is not covered under this policy.

ALL OTHER TERMS, CONDITIONS, AND EXCLUSIONS REMAIN UNCHANGED.



SR II® Low Lead Meter

Positive Displacement Water Meter with Sensus® Electronic Register+™

The Sensus SR II® is for measurement of cold water flow usage in residential services.

FEATURES

- 5/8" (DN 15mm), 3/4" (DN 20mm), and 1" (DN 25mm) Sizes
- Sensus® Electronic Register+™ advanced electronic register
- Hydrodynamically cushioned design
- Compatible with current Sensus AMI/AMR systems

BENEFITS

- Enable more cost-effective, accurate meter readings
- Deliver a wide range of flows
- Provide lasting measurement accuracy for years of dependable service
- Integrate seamlessly with the FlexNet SmartPoint® module
- Tamper resistant
- Improve customer service
- Environmental and public health conscience

Operation

Water flows through the meter's strainer and into the measuring chamber where it drives the piston. The hydrodynamically balanced piston oscillates around a central hub, guided by the division plate. A drive magnet transmits the motion of the piston to a driven magnet located within the register. The driven magnet is connected to the register gear train. It calculates the rotations into volume totalization units displayed on the register LCD.

Construction

SR II meters consist of three basic components: maincase, measuring chamber and sealed register. Maincases are made of Bismuth BiAlloy CDA89836 or EnviroBrass™ II C89520 with externally-threaded spuds. Registers are housed in a bonnet of synthetic polymer. Measuring chambers are of Rocksyn®, a corrosion-resistant, tailored thermoplastic material formulated for long-term performance and especially suitable for aggressive water conditions. Maincase bottom plates are available in Bismuth BiAlloy, EnviroBrass II or, if frost protection is desired, in cast iron or synthetic polymer.

Magnetic Drive

The SR II features a hydrodynamically cushioned design that eliminates premature wear of components. The meter utilizes a patented positive reliable drive coupling. The high strength magnets eliminate "drive slip" in normal use and also provide adequate strength to drive remote register units.

Sensus Electronic Register+

The Sensus® Electronic Register+™ is an advanced electronic register with 120 days of hourly data logging with 30-day data pull intervals available. This information helps utilities make better informed decisions.



Smart Alarms

Electronic Register+ has several available smart alarms. Get alerts and address these issues before they become more costly:

- **Tampering**

Detect register removal and magnetic interference to reduce apparent water losses and protect against unauthorized activities.

- **Low battery**

Replace your meters before they stop recording consumption through alerts indicating battery capacity to the meter is running low.

- **Customer Leak**

Detect continual consumption of water over a period of time to indicate downstream leaks. This can reduce water loss and leak adjustment costs.

- **Reverse flow**

Keep untreated water from re-entering your distribution system or deter tampering attempts when reverse flow is detected.

- **High Flow**

Detect broken pipes, high usage and reduce property damage through an alert triggered when excessive flow rates are recorded.

Conformance to Standards

SR II meters meet the requirements of NSF Standard 61, Annex F and G and comply with ANSI/AWWA Standard C700-latest revision. Each meter is tested to ensure compliance with AWWA standards.

Maintenance

SR II meters are engineered to provide long-term value and virtually maintenance-free operation. Simplicity of design allows interchangeability of parts of like-size meters, reduced parts inventory requirements and ease of maintenance. The register can be removed without relieving the water pressure or removing the maincase from the installation.

Connections

Tailpieces/unions for installing the meters on a variety of pipe types and sizes are available.

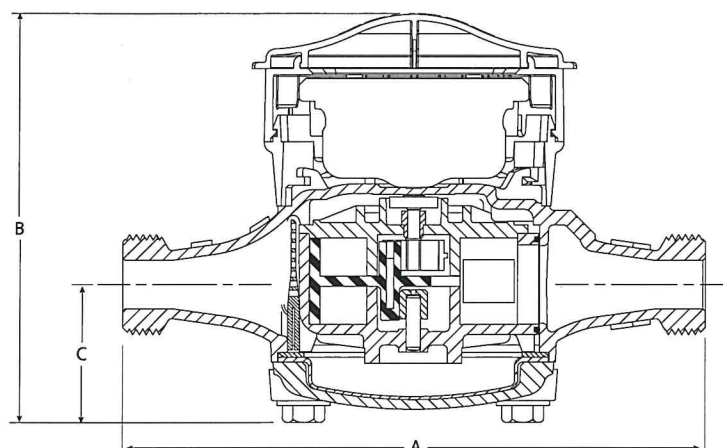
AMR/AMI Systems

Meters and encoders are compatible with current Sensus AMR/AMI systems.

Guarantee

Sensus SR II water meters are backed by "the Sensus Guarantee." Ask your Sensus representative for details or see Bulletin G-500.





Dimensions and Net Weights

Meter Size	A	B	C	Width	Net Weight
5/8" (DN 15mm)	7-1/2" (190 mm)	5-3/8" (136 mm)	1-3/4" (44 mm)	3-7/8" (98 mm)	4.3 lb. (1.97 kg)
5/8" x 3/4" (DN 15mm x 33mm)	7-1/2" (190 mm)	5-3/8" (136 mm)	1-3/4" (44 mm)	3-7/8" (98 mm)	4.4 lb. (2.0 kg)
3/4" (DN 20mm)	9" (229 mm)	5-7/8" (149 mm)	2-3/16" (56 mm)	4-1/2" (114 mm)	6.4 lb. (2.90 kg)
3/4" Short (DN 20mm)	7-1/2" (190 mm)	5-7/8" (149 mm)	2-3/16" (56 mm)	4-1/2" (114 mm)	6.2 lb. (2.81 kg)
1" (DN 25mm)	10-3/4" (273 mm)	7-1/8" (181 mm)	2-3/4" (70 mm)	6-1/2" (165 mm)	11.9 lb. (5.4 kg)

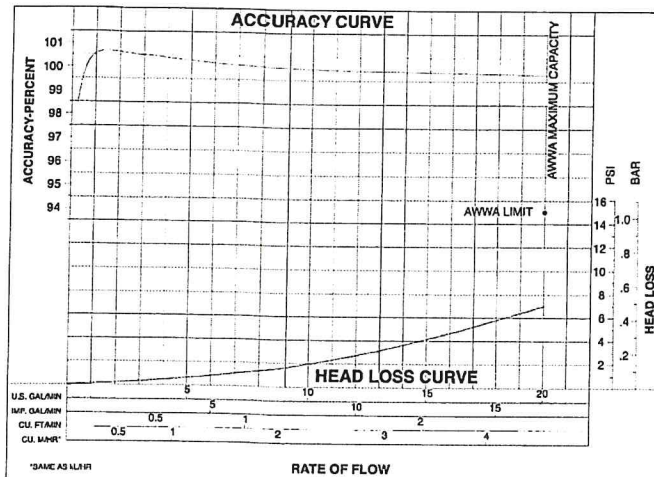
Specifications

Service	Measurement of potable and reclaim water. Water temperature range of 33 °F (0.55 °C) to 80 °F (26.7 °C)		
Normal operating flow range (±1.5%)	5/8" (DN 15mm) size: 1 to 20 gpm (0.25 to 4.5 m³/hr)	3/4" (DN 20mm) size: 2 to 30 gpm (0.45 to 7.0 m³/hr)	1" (DN 25mm) size: 3 to 50 gpm (0.07 to 11.0 m³/hr)
Low flow registration (±3%)	5/8" (DN 15mm) size: 1/4 gpm (0.06 m³/hr)	3/4" (DN 20mm) size: 1/2 gpm (0.10 m³/hr)	1" (DN 25mm) size: 3/4 gpm (0.15 m³/hr)
Maximum pressure loss	5/8" (DN 15mm) size: 7.0 psi at 20 gpm (0.5 bar at 4.5 m³/h)	3/4" (DN 20mm) size: 9.0 psi at 30 gpm (0.6 bar at 7.0 m³/h)	1" (DN 25mm) size: 7.3 psi at 50 gpm (0.5 bar at 11.0 m³/h)
Maximum operating pressure	150 psi (10.0 bar)		
Measurement element	Oscillating piston		
Register	Straight reading, hermetically sealed, magnetic drive. Remote reading unit optional.		
Capacity	10,000,000 gallons, 1,000,000 cubic feet or 100,000 m³ capacity. 8 odometer wheels.		
Meter Registration	Electronic: 0.1 gallons/imperial gallons, 0.01 cubic foot, or 0.001 m³ Standard: 10 gallons, 1 cubic foot, or 0.01 m³ or 0.1 m³/sweep hand revolution.		
Meter Connections	5/8" (DN 15mm) size: 3/4" (26.44mm) threads 3/4" (DN 20mm) size: 1" (33.25mm) threads (All threads are straight pipe, external type, conforming to ANSI B1.20.1 or ISO R228, if specified.) 5/8" x 3/4" (DN 15mm x 33mm) size: 1" (33.25mm) threads 1" (DN 25mm) size: 1-1/4" (41.9mm) threads		
Materials	Maincase - Bismuth BiAlloy CDA 89836 or EnviroBrass II C89520 Register Box - Synthetic polymer	Measuring chamber - Rocksyn® Bottom plate - Bismuth BiAlloy CDA89836	Magnets - Ceramic Casing bolts - Stainless steel Strainer - Synthetic polymer

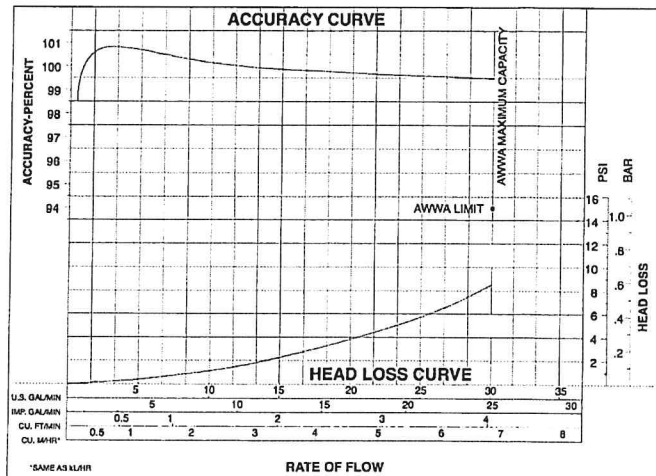
SR II® Water Meter



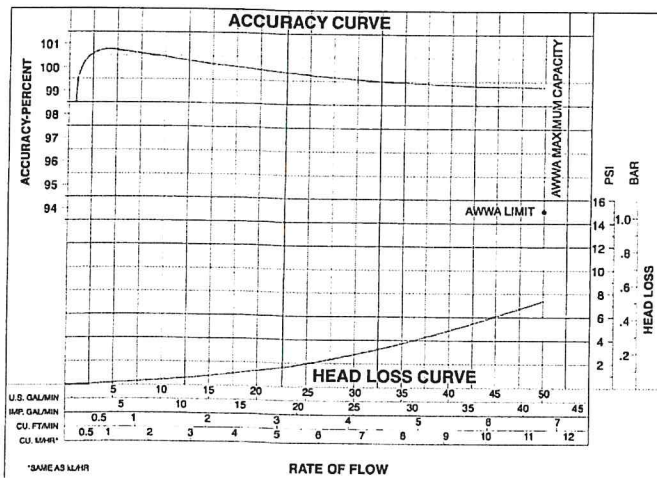
Performance Curves



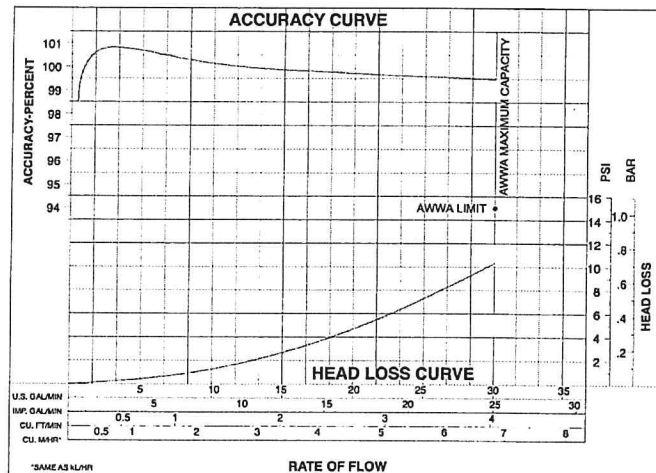
5/8" and 5/8" x 3/4" SR II Meter
UA-5833



3/4" and 53/4" x 1" SR II Meter
UA-5834



1" SR II Meter
UA-5835



3/4" SR II Meter 7-1/2" Laying Length
UA-5838

SENSUS
a xylem brand

8601 Six Forks Rd, Ste 700
Raleigh, NC 27615
1-800-638-3748
sensus.com

©2017 Sensus. All products purchased and services performed are subject to Sensus' terms of sale, available at either sensus.com/TC or 1-800-638-3748. Sensus reserves the right to modify these terms and conditions in its own discretion without notice to the customer. The Sensus logo is a registered trademark of Sensus.

This document is for informational purposes only, and SENSUS MAKES NO EXPRESS WARRANTIES IN THIS DOCUMENT. FURTHERMORE, THERE ARE NO IMPLIED WARRANTIES, INCLUDING WITHOUT LIMITATION, WARRANTIES AS TO FITNESS FOR A PARTICULAR PURPOSE AND MERCHANTABILITY. ANY USE OF THE PRODUCTS THAT IS NOT SPECIFICALLY PERMITTED HEREIN IS PROHIBITED.



OMNI™ (R²) Water Meter

1-1/2" and 2" OMNI R² Meter

The OMNI R² Water Meter operation is based on advanced Floating Ball Technology (FBT).

DESCRIPTION:

- Floating Ball Technology (FBT)

ELECTRONIC REGISTER DISPLAY DIAGRAM



Totalization Mode



AMR/AMI Mode



Resettable Test Mode



Rate of Flow Mode

Conformance to Standards

The OMNI R² meter meets and far exceeds the most recent revision of ANSI/AWWA Standard C701 class II standards and exceeds performance criteria for ANSI/AWWA C700 Residential Standard using Sensus Turbo technology. Each meter is performance tested to ensure compliance. All OMNI meters are NSF/ANSI Standard 61, Annex F and G approved.

Performance

The patented measurement principles of the OMNI R² meter ensure greater accuracy, expanded accuracy range and longer service life than any other comparable class meter. The OMNI R² meter has no restrictions on sustained flow rates within its continuous range. The floating ball measurement technology allows installation in any orientation and flows up to maximum rated capacity without undue wear or accuracy degradation.

Construction

The OMNI R² meter consists of two basic assemblies; the maincase and the measuring chamber. The measuring chamber assembly includes the "floating ball" impeller with a coated titanium shaft, hybrid axial bearings, integral flow straightener and an all electronic programmable register with protective bonnet. The maincase is made from industry proven Ductile Iron with an approved NSF epoxy coating. Maincase features are; easily removable measuring chamber, unique chamber seal to the maincase using a high pressure o-ring, testing port and a convenient integral strainer.

OMNI Electronic Register

The OMNI R² electronic register is hermetically sealed with an electronic pickup containing no mechanical gearing. The large character LCD displays AMR, totalization, rate of flow and a resettable test totalizer. OMNI register features include AMR resolution units that are fully programmable and integral resettable accuracy testing feature compatible with UniPro and Sensus flow verification software. The large, easy-to-read LCD also displays both forward and reverse flow directions. The OMNI R² electronic register has a 10-year battery life guarantee.



Magnetic Drive

Meter registration is achieved by utilizing a fully magnetic pickup system. This is accomplished by the magnetic actions of the embedded rotor magnets and the ultra sensitive register pickup probe. The only moving component in water is the "floating ball" impeller.

Measuring Element

The hydro-dynamically balanced impeller floats between the bearings. The Floating Ball Technology (FBT) allows the measuring element to operate virtually without friction or wear, thus creating the extended upper and lower flow ranges capable on only the OMNI R² meter.

Strainer

The OMNI R² with the "V" shaped strainer uses a stainless steel screen along with Floating Ball Technology (FBT). This creates a design that greatly improves accuracy, even in difficult settings. A removable strainer cover permits easy access to the screen for routine maintenance.

Maintenance

The OMNI R² meter is designed for easy maintenance. Should any maintenance be required, the measuring chamber and/or strainer cover can be removed independently. Replacement parts or complete measuring chambers are available for repairs. OMNI R² replacement measuring chambers may also be utilized to upgrade some third-party meters to achieve increased accuracy and extended service life.

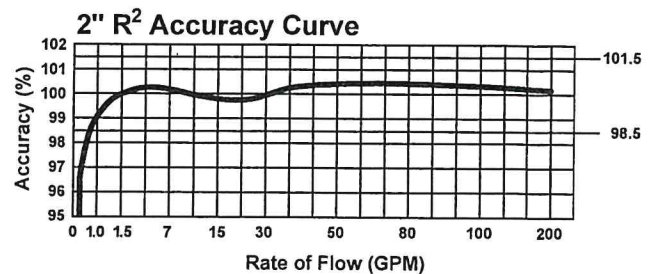
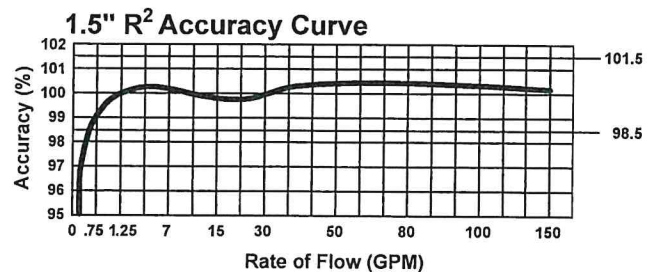
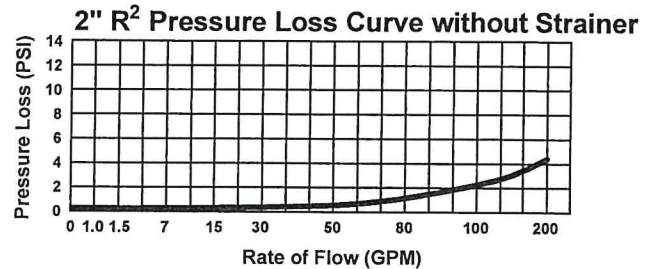
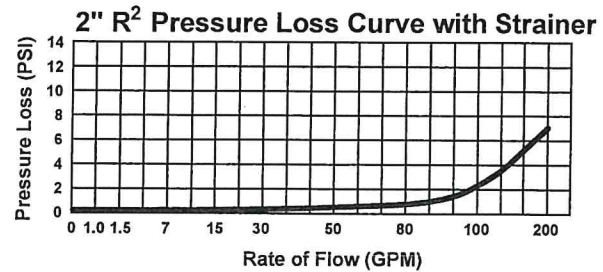
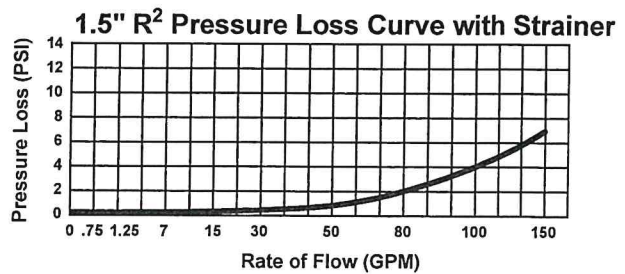
AMR/AMI Systems

Meters and Electronic Registers are compatible with current Sensus AMR/AMI systems and other AMI communication systems that use the Sensus UI1203 protocol.

Guarantee

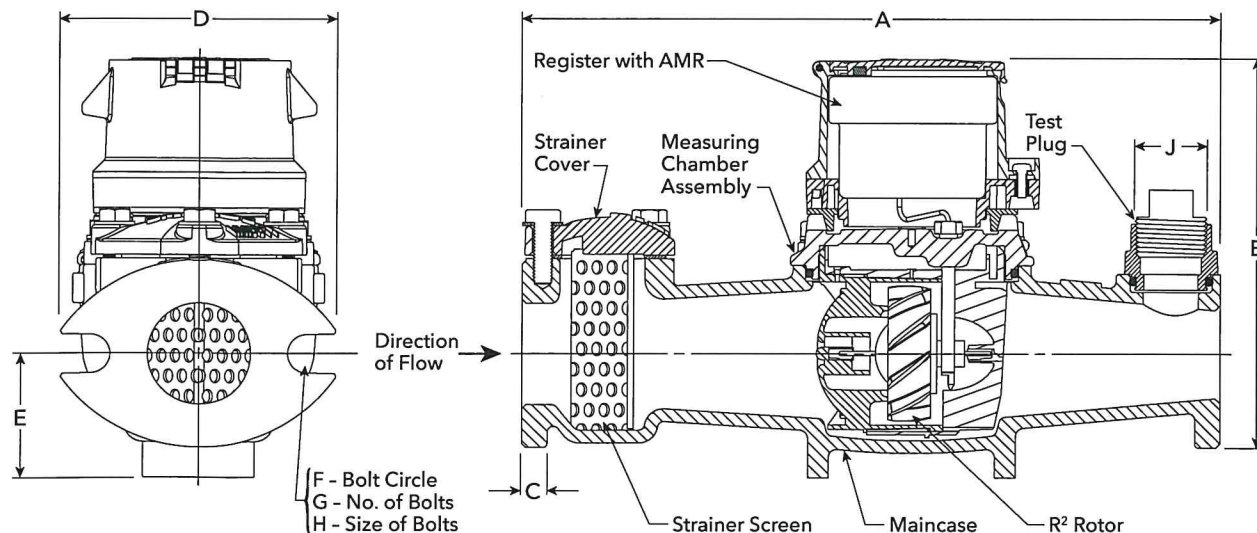
Sensus OMNI R² Meters are backed by "The Sensus Guarantee." Ask your Sensus representative for details or see Bulletin G-500.

Head Loss Curves

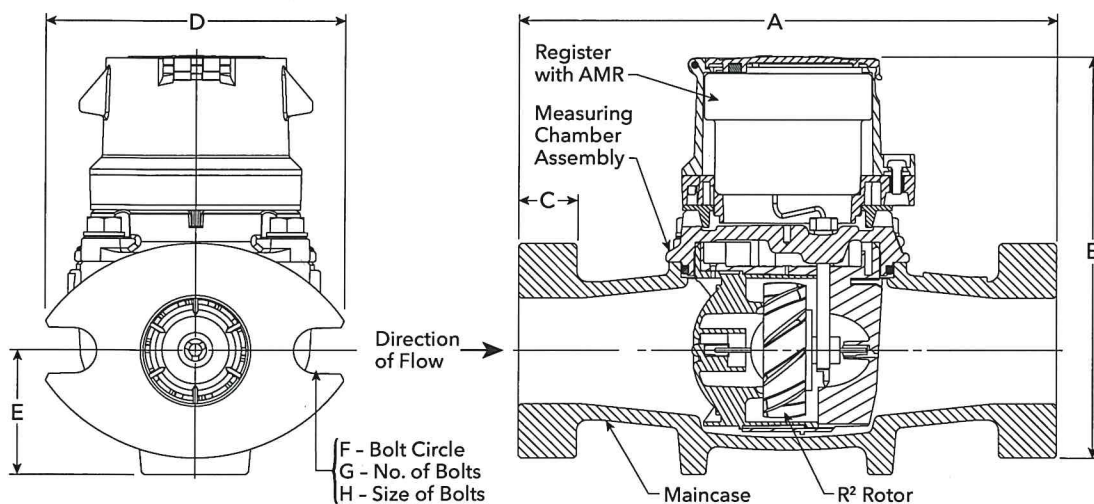




OMNI R²: 1-1/2" - 2"



OMNI R²: 2" Without Strainer



Dimensions and Net Weights

Meter and Pipe Size	Normal Operating Range		Connections	A	B	C	D	E	F	G	H	J	Net Weight	Shipping Weight
1-1/2" DN 40mm	2 gpm 0.45 m ³ /hr	150 gpm 34 m ³ /hr	Flanged	13" 330mm	7-7/8" 200mm	15/16" 24mm	5-1/8" 130mm	2-5/16" 59mm	4" 102mm	2	5/8" 16mm	1" 25mm	18.8 lbs. 8.53 kg.	22.5 lbs. 10.2 kg.
2" DN 50mm	2.5 gpm 0.57 m ³ /hr	200 gpm 45 m ³ /hr	Flanged	17" 432mm	7-7/8" 200mm	1" 25mm	5-3/4" 146mm	2-5/16" 59mm	4-1/2" 114mm	2	3/4" 19mm	1" 25mm	27.4 lbs. 12.4 kg.	34.5 lbs. 15.6 kg.
2" without Strainer DN 80mm	2.5 gpm 0.57 m ³ /hr	250 gpm 57 m ³ /hr	Flanged	10" 254mm	7-7/8" 200mm	1" 25mm	5-3/4" 146mm	2-5/16" 59mm	4-1/2" 114mm	2	3/4" 19mm	N/A	17 lbs. 7.9 kg.	24.5 lbs. 11.1 kg.



Specifications

Service	Measurement of potable and reclaim water. Storage temperature: -22F (-30C) to 155F (68.3C) Operating temperatures: Air: -22F (-30C) to 150F (65.6C) Water: 33F (0.6C) to 80F (26.7C)
Operating Range (100% ± 1.5%)	1-1/2": 2 - 150 GPM (0.45 - 34 m³/hr) 2": 2.5 - 200 GPM (0.57 - 45 m³/hr) 2" without Strainer: 2.5 - 250 GPM (0.57 - 57 m³/hr)
Low flow (95% - 101.5%)	1-1/2": 0.75 GPM (0.17 m³/hr) 2": 1.0 GPM (0.23 m³/hr) 2" without Strainer: 2.5 - 250 GPM (0.57 - 57 m³/hr)
Pressure Loss	1-1/2": 6.7 psi @ 150 GPM (0.46 bar @ 34 m³/hr) 2": 7.0 psi @ 200 GPM (0.48 bar @ 45 m³/hr)
Maximum Operating Pressure	200 PSI (13.8 bar)
Flange Connections	U.S. ANSI B16.1 / AWWA Class 125
Test Ports	NPT
Register	Fully electronic sealed register with programmable registration (Gal. /Cu.Ft. / Cu. Mtr. / Imp. Gal. / Acre Ft.) Programmable AMR/AMI reading Guaranteed 10-year battery life
NSF Approved Materials	Maincase: Coated Ductile Iron Measuring Chamber: Thermoplastic Rotor "Floating Ball": Thermoplastic Radial Bearings: Hybrid Thermoplastic Thrust Bearings: Sapphire/Ceramic Jewel Magnets: Ceramic Strainer Screen: Stainless Steel Strainer Cover: Coated Ductile Iron

Sensus Limited Warranty

G-500 R23

1. General Product Coverage. Unless otherwise provided herein, Sensus USA Inc. ("Sensus") warrants its products and parts to be free from defects in material and workmanship for one (1) year from the date of Sensus shipment and as set forth below. All products are sold to customer ("Customer") pursuant to Sensus' Terms of Sale, available at: sensus.com/TC ("Terms of Sale").

2. SR II® and accuSTREAM™ 5/8", 3/4" & 1" Meters are warranted to perform to new meter accuracy level set forth in the SR II and accuSTREAM Data Sheets available at sensus.com for five (5) years from the date of Sensus shipment or until the registration shown below, whichever occurs first. Sensus further warrants that the SR II and accuSTREAM meters will perform to at least AWWA Repaired Meter Accuracy Standards for fifteen (15) years from the date of Sensus shipment or until the registration shown below, whichever occurs first:

	New Meter Accuracy	Repair Meter Accuracy
5/8" SR II Meter and accuSTREAM Meter	500,000 gallons	1,500,000 gallons
3/4" SR II Meter and accuSTREAM Meter	750,000 gallons	2,250,000 gallons
1" SR II Meter and accuSTREAM Meter	1,000,000 gallons	3,000,000 gallons

3. ally® Meters that register water flow are warranted to perform to the accuracy level set forth in the ally Data Sheet available at sensus.com for fifteen (15) years from the Date of Installation, but no longer than sixteen (16) years from date of manufacture, not including the meter's sensors, valve, and gear motor, which are warranted under different terms described below. As used herein, "Date of Installation" means the date after which the ally Meter has been out of empty pipe for seven (7) consecutive days, as those days are measured by the ally Meter and stored in the meter's nonvolatile memory.

4. iPERL® Meters that register water flow are warranted to perform to the accuracy levels set forth in the iPERL Data Sheet available at sensus.com for twenty (20) years from the date of Sensus shipment. The iPERL System Component warranty does not include the external housing.

5. SR II maincases are warranted to be free from defects in material and workmanship for twenty-five (25) years from the date of Sensus shipment. accuSTREAM maincases will be free from defects in material and workmanship for fifteen (15) years from the date of Sensus shipment.

6. Sensus OMNI™ Meters and Propeller Meters are warranted to perform to as set forth in OMNI and Propeller data sheets for one (1) year from the date of Sensus shipment.

7. Sensus accuMAG™ and Hydroverse™ Meters are warranted to be free from defects in material and workmanship, under normal use and service, for 18 months from the date of Sensus shipment or 12 months from startup, whichever occurs first.

8. Sensus Registers are warranted to be free from defects in material and workmanship from the date of Sensus shipment for the periods stated below or until the applicable registration for AWWA Repaired Meter Accuracy Standards, as set forth above, are surpassed, whichever occurs first:

5/8" thru 1" SR II, accuSTREAM Standard Registers	25 years
5/8" thru 1" SR II, accuSTREAM Encoder Registers	10 years
AI HSPU, IMP Contactor, R.E.R. Elec. ROFI	1 year
Standard and Encoder Registers for Propeller Meters	1 year
OMNI and OMNI+ Registers with Battery	10 years

9. Sensus Electric and Gas Meters are warranted pursuant to the General Limited Warranty available at sensus.com/TC.

10. Batteries, iPERL System Components, AMR and FlexNet® Communication Network AMI Interface Devices are warranted to be free from defects in material and workmanship from the date of Sensus shipment for the period stated below:

Electronic TouchPad	10 years
Act-Pak® Remote Monitoring Instruments	1 year
Gas SmartPoint® Modules and Batteries	20 years ¹
6500 series Hand-Held Device	2 years
Vehicle Gateway Base Station (VGB) and other AMR Equipment	1 year
EasyLink Reader	1 Year
CPTP100	20 Years ²
FlexNet Base Station (including the R100NA and M400 products)	1 year
RM4160	1 Year
iPERL System Battery and iPERL System Components	20 years ³

¹ Sensus will repair or replace non-performing Gas SmartPoint Modules (configured to the factory setting of six transmissions per day under normal system operation of up to one demand read to each SmartPoint Module per month and up to five firmware downloads during the life of the product) and batteries.

² Sensus will repair or replace non-performing CPTP100 modules (configured at factory setting of four transmissions per day under normal system operations of up to one demand read per month and up to five firmware downloads during the life of the product) and batteries.

Sensus® Electronic Register+™	20 years ⁴
Sensus® Smart Gateway Sensor Interface	1 year ⁵
SmartPoint® 510M/520M/515M/512M Modules and Batteries	20 years ³

11. ally® Meter Batteries and Components, including SmartPoint 510M/520M Modules are warranted to be free from defects in material and workmanship from the Date of Installation, as defined in Section 3, for the period stated below:

Batteries	15 years ⁶
Sensors	5 years
Valve & Gear Motor	5 years ⁷
SmartPoint 510M/520M Modules and Batteries in service w/ally	15 years ⁶

³ Sensus will repair or replace non-performing:

- iPERL System Batteries, and/or the iPERL System flowtube, the flow sensing and data processing assemblies, and the register ("iPERL System Components") with hourly reads,
- SmartPoint 510M/520M/515M/512M-PLS Modules (configured to the factory setting of six transmissions per day under normal system operation of up to one demand read to each SmartPoint Module per month and up to five firmware downloads during the life of the product) and batteries, unless the SmartPoint 510M/520M Module is ever paired with an ally Meter, which event immediately amends the warranty terms to those described in Section 11;

at no cost for the first fifteen (15) years from the date of Sensus shipment, and for the remaining five (5) years at a prorated percentage, applied towards the published list price in effect for the year the product is accepted by Sensus under the warranty conditions according to the following schedule:

Years	Replacement Price
1 – 15	0%
16	30%
17	40%
18	50%
19	60%
20	70%
>20	100%

⁴ Sensus will repair or replace non-performing Sensus Electronic Register+ with hourly reads for the first ten (10) years from the date of Sensus shipment, and for the remaining ten (10) years, at a prorated percentage, applied towards the published list prices in effect for the year product is accepted by Sensus under warranty conditions according to the following schedule:

Years	Replacement Price	Years	Replacement Price
1 – 10	0%	16	55%
11	30%	17	60%
12	35%	18	65%
13	40%	19	70%
14	45%	20	75%
15	50%	>20	100%

⁵ Sensus® Smart Gateway Sensor Interface warranty valid only for analog Meter Sample Rates of four times per hour with a Standard Transmitt Rate of hourly or greater for the analog channel(s).

⁶ If applicable, any SmartPoint 510M/520M Modules ever paired with an ally Meter are warranted with the following limitations:

- When configured to the default installation setting of six transmissions of metrology and pressure per day and one update of temperature per day, the SmartPoint is warranted to perform up to five (5) firmware upgrades for the SmartPoint Module and up to five (5) firmware upgrades for the ally Meter;
 - 2500 Operational Commands, where "Operational Commands" include on demand reads (such as consumption, pressure, temperature), an ally valve command, or a configuration command; and
 - 15 Diagnostic Commands, which includes two-way communications tests and installations
- for the first ten (10) years from Date of Installation at no cost. For the remaining five (5) years, Customer will pay the reduced Replacement Price of the then-current list price in effect at the time the product is accepted for return in accordance with the following schedule:

Years	Replacement Price	Years	Replacement Price
1 – 10	0%	14	65%
11	35%	15	75%
12	45%	>15	100%
13	55%		

⁷ Notwithstanding the foregoing, valve and gear motor components of ally Meters are not warranted beyond two thousand (2000) Valve State Operations, even if the warranty period provided herein has not yet expired. As used herein, "Valve State Operations" means adjustments of the Meter to open, close, or reduce flow.

12. **IPERL and ally Connectors and Cables** are warranted to be free from defects in materials and workmanship, under normal use and service, for ten (10) years from the date of Sensus shipment. Nicor or Itron connectors included with a Sensus product are warranted according to the terms for Third-Party Devices in Section 13.

13. **Third-Party Devices** are warranted to be free from defects in materials and workmanship, under normal use and service, for one (1) year from the date of Sensus shipment. As used in this Sensus Limited Warranty, "Third Party Devices" means any product, device, or component part used with a Sensus product that is manufactured or sold by any party that is not Sensus. Failure of a Third Party Device which subsequently causes failure to a Sensus device shall be the responsibility of the manufacturer of the Third Party Device.

14. **Software.** Software supplied and/or licensed by Sensus is supported according to the terms of the applicable software license or usage agreement. Sensus warrants that any network and monitoring services shall be performed in a professional and workmanlike manner.

15. **Return.** Sensus' obligation, and Customer's exclusive remedy, under this Sensus Limited Warranty is, at Sensus' option, to either (i) repair or replace the product, provided the Customer (a) returns the product to the location designated by Sensus within the warranty period; and (b) prepays the freight costs both to and from such location; or (ii) deliver replacement components to the Customer, provided the Customer installs, at its cost, such components in or on the product (as instructed by Sensus), provided, that if Sensus requests, the Customer (a) returns the product to the location designated by Sensus within the warranty period; and (b) prepays the freight costs both to and from such location. In all cases, if Customer does not return the product within the time period designated by Sensus, Sensus will invoice, and Customer will pay within thirty days of the invoice date, for the cost of the replacement product and/or components.

The return of products for warranty claims must follow Sensus' Returned Materials Authorization (RMA) procedures. Water meter returns must include documentation of the Customer's test results. Test results must be obtained according to AWWA standards and must specify the meter serial number. The test results will not be valid if the meter is found to contain foreign materials. If Customer chooses not to test a Sensus water meter prior to returning it to Sensus, Sensus will repair or replace the meter, at Sensus' option, after the meter has been tested by Sensus. The Customer will be charged Sensus' then current testing fee. All product must be returned in accordance with the RMA process. For all returns, Sensus reserves the right to request meter reading records by serial number to validate warranty claims.

For products that have become discontinued or obsolete ("**Obsolete Product**"), Sensus may, at its discretion, replace such Obsolete Product with a different product model ("**New Product**"), provided that the New Product has substantially similar features as the Obsolete Product. The New Product shall be warranted as set forth in this Sensus Limited Warranty.

THIS SECTION 15 SETS FORTH CUSTOMER'S SOLE REMEDY FOR THE FAILURE OF THE PRODUCTS, SERVICES OR LICENSED SOFTWARE TO CONFORM TO THEIR RESPECTIVE WARRANTIES.

16. **Warranty Exceptions and No Implied Warranties.** This Sensus Limited Warranty does not include costs for removal or installation of products, or costs for replacement labor or materials, which are the responsibility of the Customer. The warranties in this Sensus Limited Warranty do not apply to and Sensus has no liability for goods that have been: installed improperly or in non-recommended installations; installed to a socket that is not functional, or is not in safe operating condition, or is damaged, or is in need of repair; tampered with; modified or repaired with parts or assemblies not certified in writing by Sensus, including without limitation, communication parts and assemblies; improperly modified or repaired (including as a result of modifications required by Sensus); converted; altered; damaged; read by equipment not approved by Sensus; for water meters, used with substances other than water, used with non-potable water, or used with water that contains dirt, debris, deposits, or other impurities; subjected to misuse, improper storage, improper care, improper maintenance, or improper periodic testing (collectively, "**Exceptions**"). If Sensus identifies any Exceptions during examination, troubleshooting or performing any type of support on behalf of Customer, then Customer shall pay for and/or reimburse Sensus for all expenses incurred by Sensus in examining, troubleshooting, performing support activities, repairing or replacing any Equipment that satisfies any of the Exceptions defined above. The above warranties do not apply in the event of Force Majeure, as defined in the Terms of Sale.

THE WARRANTIES SET FORTH IN THIS SENSUS LIMITED WARRANTY ARE THE ONLY WARRANTIES GIVEN WITH RESPECT TO THE GOODS, SOFTWARE, SOFTWARE LICENSES AND SERVICES SOLD OR OTHERWISE PROVIDED BY SENSUS. SENSUS EXPRESSLY DISCLAIMS ANY AND ALL OTHER REPRESENTATIONS, WARRANTIES, CONDITIONS, EXPRESSED, IMPLIED, STATUTORY OR OTHERWISE, REGARDING ANY MATTER IN CONNECTION WITH THIS SENSUS LIMITED WARRANTY OR WITH THE TERMS OF SALE, INCLUDING WITHOUT LIMITATION, WARRANTIES AS TO FITNESS FOR A PARTICULAR PURPOSE, MERCHANTABILITY, NON-INFRINGEMENT AND TITLE.

SENSUS ASSUMES NO LIABILITY FOR COSTS OR EXPENSES ASSOCIATED WITH LOST REVENUE OR WITH THE REMOVAL OR INSTALLATION OF EQUIPMENT. THE FOREGOING REMEDIES ARE CUSTOMER'S SOLE AND EXCLUSIVE REMEDIES FOR THE FAILURE OF EQUIPMENT, LICENSED SOFTWARE OR SOFTWARE SERVICES, AND OTHER SERVICES TO CONFORM TO THEIR RESPECTIVE WARRANTIES.

17. **Limitation of Liability.** SENSUS' AGGREGATE LIABILITY IN ANY AND ALL CAUSES OF ACTION ARISING UNDER, OUT OF OR IN RELATION TO THIS AGREEMENT, ITS NEGOTIATION, PERFORMANCE, BREACH OR TERMINATION

(COLLECTIVELY "**CAUSES OF ACTION**") SHALL NOT EXCEED THE TOTAL AMOUNT PAID BY CUSTOMER TO SENSUS UNDER THIS AGREEMENT. THIS IS SO WHETHER THE CAUSES OF ACTION ARE IN TORT, INCLUDING, WITHOUT LIMITATION, NEGLIGENCE OR STRICT LIABILITY, IN CONTRACT, UNDER STATUTE OR OTHERWISE.

AS A SEPARATE AND INDEPENDENT LIMITATION ON LIABILITY, SENSUS' LIABILITY SHALL BE LIMITED TO DIRECT DAMAGES. SENSUS SHALL NOT BE LIABLE FOR: (I) ANY INDIRECT, INCIDENTAL, SPECIAL OR CONSEQUENTIAL DAMAGES; NOR (II) ANY REVENUE OR PROFITS LOST BY CUSTOMER OR ITS AFFILIATES FROM ANY END USER(S), IRRESPECTIVE OF WHETHER SUCH LOST REVENUE OR PROFITS IS CATEGORIZED AS DIRECT DAMAGES OR OTHERWISE; NOR (III) ANY IN/OUT COSTS; NOR (IV) MANUAL METER READ COSTS AND EXPENSES; NOR (V) DAMAGES ARISING FROM MAINCASE OR BOTTOM PLATE BREAKAGE CAUSED BY FREEZING TEMPERATURES, WATER HAMMER CONDITIONS, OR EXCESSIVE WATER PRESSURE. "**IN/OUT COSTS**" MEANS ANY COSTS AND EXPENSES INCURRED BY CUSTOMER IN TRANSPORTING GOODS BETWEEN ITS WAREHOUSE AND ITS END USER'S PREMISES AND ANY COSTS AND EXPENSES INCURRED BY CUSTOMER IN INSTALLING, UNINSTALLING AND REMOVING GOODS. "**END USER**" MEANS ANY END USER OF ELECTRICITY/WATER/GAS THAT PAYS CUSTOMER FOR THE CONSUMPTION OF ELECTRICITY/WATER/GAS, AS APPLICABLE.

The limitations on liability set forth in this Agreement are fundamental inducements to Sensus entering into this Agreement. They apply unconditionally and in all respects. They are to be interpreted broadly so as to give Sensus the maximum protection permitted under law.