



JEFFERSON PARISH

DEPARTMENT OF PURCHASING

CYNTHIA LEE SHENG
PARISH PRESIDENT

RENNY SIMNO
DIRECTOR

January 16, 2025

JEFFERSON PARISH INVITATION TO BID NOTIFICATION

This notification is to inform bidders of the following bid solicitation for Jefferson Parish Government. Please review this notification in its entirety for details on how to access the on-line bidding site to view and download the Invitation to Bid, including all required bidding documents. The notification also states how and/or where to submit the bid response to the Jefferson Parish Purchasing Department on the bid opening date or before.

BID # 50-00147058

PURCHASE OF REFRIGERATED BACK BAR CABINET FOR JEFFERSON PARISH GENERAL SERVICES DEPARTMENT

Bids will be received at centralauctionhouse.com until 11 a.m., on 1/23/2025. Bids delivered after 11 a.m., will not be accepted.

Where to obtain the Invitation to Bid: This Invitation to Bid may be viewed, and/or downloaded from our on-line bidding site, Central Bidding by clicking, <http://www.jeffparishbids.net>. All vendors are encouraged to register with Central Bidding in order to respond, free of charge, to Jefferson Parish Invitation to Bid.

How to respond: Vendors can respond either through Central Bidding, our on-line bidding site or through the link above.

For more information on this bid, please contact the buyer assigned to this bid:

Sean Dumas, Purchasing Specialist, I

504-364-2808

Sean.dumas@jeffparish.gov

Or you may visit the Purchasing Department's webpage at www.jeffparish.net.

JOSEPH S. YENNI BUILDING - 1221 ELMWOOD PARK BLVD - SUITE 404 - JEFFERSON, LA 70123 - PO BOX 10242 JEFFERSON, LA 70181-0242
OFFICE 504.364.2678

GENERAL GOVERNMENT BUILDING - 200 DERBIGNY ST - SUITE 4400 - GRETN, LA 70053 - PO BOX 9 - GRETN - LA 70054
OFFICE 504.364.2678

EMAIL: PURCHASING@JEFFPARISH.NET

WEBSITE: WWW.JEFFPARISH.NET



CENTRALBIDDING
FROM CENTRAL AUCTION HOUSE

**5000147058 PURCHASE OF REFRIGERATED BACK BAR CABINET FOR
JEFFERSON PARISH GENERAL SERVICES DEPARTMENT**
Jefferson Parish Government

Project documents obtained from www.CentralBidding.com
16-Jan-2025 12:54:29 PM



Bid Number 50-00147058

**PURCHASE OF REFRIGERATED BACK BAR
CABINET FOR JEFFERSON PARISH GENERAL
SERVICES DEPARTMENT**

BID DUE: January 23, 2025 AT 11:00 AM

ATTENTION VENDORS!!!

Please review all pages and respond accordingly, complying with all provisions in the technical specifications and Jefferson Parish Instructions for Bidders and General Terms and Conditions. All bids must be received on the Purchasing Department's eProcurement site, www.jeffparishbids.net, by the bid due date and time. Late bids will not be accepted.

**Jefferson Parish Purchasing Department
200 Derbigny Street
General Government Building, Suite 4400
Gretna, LA 70053
Purchasing Specialist: Sean Dumas
Email: sean.dumas@jeffparish.gov
Phone: 504-364-2808**

DATE: 1/16/2025

**INVITATION TO BID
THIS IS NOT AN ORDER**

Page: 1

BID NO.: 50-00147058

**JEFFERSON PARISH
PURCHASING DEPARTMENT
P.O. BOX 9
GRETN, LA. 70054-0009
504-364-2678**

VENDOR: 27118 BLANK BID COPY VENDOR

PURCHASING SPECIALIST:
Sean.Dumas@jeffparish.gov

Bids will be received until 11:00 AM, 1/23/2025

LATE BIDS WILL NOT BE ACCEPTED

NOTE: ONLY BIDS WRITTEN IN INK OR TYPEWRITTEN, AND PROPERLY SIGNED BY A MEMBER OF THE FIRM OR AUTHORIZED REPRESENTATIVE, WILL BE ACCEPTED. PENCIL AND/OR PHOTOSTATIC FIGURES OR SIGNATURES SHALL RESULT IN BID REJECTION. HOWEVER, ELECTRONIC SIGNATURES AS DEFINED IN LSA – R.S. 9:2602(8) ARE ACCEPTABLE. SIGNATURE MUST BE A SECURED DIGITAL SIGNATURE AND MUST PROVIDE PROOF OF THE SECURED SIGNATURE WITH BID SUBMISSION.

All bids submitted are subject to these instructions and general conditions and any special conditions and specifications contained herein, all of which are made part of this bid proposal reference. By submitting a bid, vendor agrees to comply with all provisions of Louisiana Law, as well be in compliance with the Jefferson Parish Code of Ordinances, Louisiana Code of Ethics, applicable Jefferson Parish ethical standards and Jefferson Parish Resolution No. 136353 as amended. A copy of these resolutions may be obtained from the Office of the Parish Clerk, Suite 6700, Jefferson Parish General Government Building, 200 Derbigny Street, Gretna, LA 70053. You may also obtain a copy by visiting the Purchasing Department webpage at <http://www.jeffparish.gov/464/Purchasing> and clicking on On-line forms.

All vendors submitting bids should register as a Jefferson Parish vendor if not already yet registered. Registration forms may be downloaded from <http://www.jeffparish.gov/464/Purchasing> and by clicking on Vendor Information. Current W-9 forms with respective Tax Identification numbers and vendor applications may be submitted at any time; however, if your company is not registered and/or a current W-9 form is not on file, vendor registration is mandatory. Vendors may experience a delay in payment if your company is not a registered vendor with Jefferson Parish.

Jefferson Parish is exempt from paying sales tax under LSA-R.S. 47:301 (8)(c). All prices for purchases by Jefferson Parish of supplies and materials shall be quoted in the unit of measure specified and unless otherwise specified, shall be exclusive of state and local taxes. The price quoted for work shall be stated in figures. In the event there is a difference in unit prices and totals, the unit price shall prevail. Quotations shall be based on F.O.B. Delivered, anywhere within the Parish as designated by the Purchasing Department. JEFFERSON PARISH WILL ACCEPT ONE BID ONLY FROM EACH VENDOR. Items bid must meet specifications. JEFFERSON PARISH will accept one price for each item unless otherwise indicated. Two or more prices for one item will result in bid rejection. Bidders are required to complete, sign and return the bid form and/or complete and return the associated line item pricing forms as indicated. The price quoted for work shall be stated in figures. In the event there is a difference in unit prices and totals, the unit prices shall prevail.

JEFFERSON PARISH reserves the right to award contracts or place orders on a lump sum or individual item basis, or such combination, as shall in its judgment be in the best interest of JEFFERSON PARISH. Every contract or order shall be awarded to the LOWEST RESPONSIVE and RESPONSIBLE BIDDER, taking into consideration the CONFORMITY WITH THE SPECIFICATIONS and the DELIVERY AND/OR COMPLETION DATE.

PROTESTS: Only those vendors that submit bids in response to this solicitation may protest any element of the procurement, in writing to the Director of the Purchasing Department. Written protest must be received within 48 hours of the release of the bid tabulation by the Purchasing Department. After consultation, the Parish Attorney's Office will then respond to protests in writing. (For more information, please see Chapter 2, Article VII, Division 2, Sec. 2-914.1 of the Jefferson Parish Code of Ordinances.)

JEFFERSON PARISH reserves the right to cancel all or any part of an order if not shipped promptly. No charges will be allowed for parking or cartage unless specified in the quotation. The order must not be filled at a higher price than quoted. JEFFERSON PARISH reserves the right to cancel at any time and for any reason by issuing a THIRTY (30) day written notice to the contractor.

JEFFERSON PARISH requires all products to be new (current) and all work must be performed according to standard practices for the project. Unless otherwise specified, no aftermarket parts will be accepted. Unless otherwise specified, all workmanship and materials must have at least one (1) year guaranty, in writing, from the date of delivery and/or acceptance of the project. Any deviations or alteration from the specifications must be indicated on the bid form for each item and upon request, product data for same must be submitted by the time specified by the Purchasing Department.

If this bid requires a pre-bid conference (see Additional Requirements section), bidders are advised that such conference will be held to allow bidders the opportunity to identify any discrepancies in the bid specifications and seek further clarification regarding instructions. The Purchasing Department will issue a written response to bidders' questions in the form of an Addendum.

All formal Addenda require written acknowledgment on the bid form by the bidder by the bidder placing the Addendum number in the appropriate section. Failure to acknowledge an Addendum on the bid form shall cause the bid to be rejected; JEFFERSON PARISH reserves the right to award bid to next lowest responsive and responsible bidder in this event.

USE OF BRAND NAMES AND STOCK NUMBERS: Where brand names and stock numbers are specified, it is for the purpose of establishing certain minimum standards of quality. Bids may be submitted for products of equal quality, provided brand names and stock numbers are specified. Complete product data may be required prior to award.

Quantities listed are for bidding purposes only. Actual requirements may be more or less than quantities listed.

INSTRUCTIONS FOR BIDDERS AND GENERAL CONDITIONS

Bidders are not to exclude from participation in, deny the benefits of, or subject to discrimination under any program or activity, any person in the United States on the grounds of race, color, national origin, or sex; nor discriminate on the basis of age under the Age Discrimination Act of 1975, or with respect to an otherwise qualified handicapped individual as provided in Section 504 of the Rehabilitation Act of 1973, or on the basis of religion, except that any exemption from such prohibition against discrimination on the basis of religion as provided in the Civil Rights Act of 1964, or Title VI and VII of the Act of April 11, 1968, shall also apply. This assurance includes compliance with the administrative requirements of the Revenue Sharing final handicapped discrimination provisions contained in Section 51.55 (c), (d), (e), and (k)(5) of the Regulations. New construction or renovation projects must comply with Section 504 of the 1973 Rehabilitation Act, as amended, in accordance with the American National Standard Institute's specifications (ANSI A17.1-1961).

Jefferson Parish and its partners as the recipients of federal funds are fully committed to awarding a contract(s) to firm(s) that will provide high quality services and that are dedicated to diversity and to containing costs. Thus, Jefferson Parish strongly encourages the involvement of minority and/or woman-owned business enterprises (DBE's, including MBE's, WBE's and SBE's) to stimulate participation in procurement and assistance programs.

IN ACCORDANCE WITH STATE REGULATIONS JEFFERSON PARISH OFFERS ELECTRONIC PROCUREMENT TO ALL VENDORS

This electronic procurement system allows vendors the convenience of reviewing and submitting bids online.

This is a secure site and authorized personnel have limited read access only. Bidders are to submit electronically using this free service; while the website accepts various file types, one single PDF file containing all appropriate and required bid documents is preferred. Bidders submitting uploaded images of bid responses are solely responsible for clarity. If uploaded images/documents are not legible, then bidder's submission will be rejected. Please note all requirements contained in this bid package for electronic bid submission.

Please visit our E-Procurement Page at www.jeffparishbids.net to register and view Jefferson Parish solicitations. For more information, please visit the Purchasing Department page at <http://www.jeffparish.gov/464/Purchasing>.

ADDITIONAL REQUIREMENTS FOR THIS BID

PLEASE MATCH THE NUMBERS PRINTED IN THIS BOX WITH THE CORRESPONDING INSTRUCTIONS BELOW. IF THE NUMBER IS NOT SPECIFIED IN THIS BOX, IT IS NOT APPLICABLE FOR THIS BID.

13

1. All bidders must attend the MANDATORY pre-bid conference and will be required to sign in and out as evidence of attendance. In accordance with LSA R.S. 38:2212(l), all prospective bidders shall be present at the beginning of the MANDATORY pre-bid conference and shall remain in attendance for the duration of the conference. Any prospective bidder who fails to attend the conference or remain for the duration shall be prohibited from submitting a bid for the project.
2. Attendance to this pre-bid conference is optional. However, failure to attend the pre-bid conference shall not relieve the bidder of responsibility for information discussed at the conference. Furthermore, failure to attend the pre-bid conference and inspection does not relieve the successful bidder from the necessity of furnishing materials or performing any work that may be required to complete the work in accordance with the specification with no additional cost to the owner.
3. Contractor must hold current applicable JEFFERSON PARISH licenses with the Department of Building Permits. Contractor shall obtain any and all permits required by the JEFFERSON PARISH Department of Building Permits. The contractor shall be responsible for the payment of these permits. All permits must be obtained prior to the start of the project. Contractor must also hold any and all applicable Federal and State licenses. Contractor shall be responsible for the payment of these permits and shall obtain them prior to the start of the project.
4. A LA State Contractor's License will be required in accordance with LSA R.S. 37-2150 et. seq. and such license number will be shown on the outside of the bid electronic envelope. Failure to comply will cause the bid to be rejected. When submitting the bid electronically, the license number must be entered in the appropriate field in the electronic procurement system. Failure to comply will cause the bid to be rejected.

INSTRUCTIONS FOR BIDDERS AND GENERAL CONDITIONS

5. It is the bidder's responsibility to visit the job site and evaluate the job before submitting a bid.
6. Job site must be clean and free of all litter and debris daily and upon completion of the contract. Passageways must be kept clean and free of material, equipment, and debris at all times. Flammable material must be removed from the job site daily because storage will not be permitted on the premises. Precaution must be exercised at all times to safeguard the welfare of JEFFERSON PARISH and the general public.
7. **PUBLIC WORKS BIDS:** All awards for public works in excess of \$5,000.00 will be reduced to a formal contract which shall be recorded at the contractor's expense with the Clerk of Court and Ex-Officio Recorder of Mortgages for the Parish of Jefferson. A price list of recordation costs may be obtained from the Clerk of Court and Ex-Officio Recorder of Mortgages for the Parish of Jefferson. All awards in excess of \$25,000.00 will require both a performance and a payment bond. Unless otherwise stated in the bid specifications, the performance bond requirements shall be 100% of the contract price. Unless otherwise state in the bid specifications, the payment bond requirements shall be 100% of the contract price. Both bonds shall be supplied at the signing of the contract.
8. **NON-PUBLIC WORKS BIDS:** A performance bond will be required for this bid. The amount of the bond will be 100% of the contract price unless otherwise indicated in the specifications. The performance bond shall be supplied at the signing of the contract.
9. **NON-PUBLIC WORKS BIDS:** A payment bond will be required for this bid. The amount of the bond will be 100% of the contract price unless otherwise indicated in the specifications. The payment bond shall be supplied at the signing of the contract.
10. All bidders must comply with the requirements stated in the attached "Standard Insurance Requirements" sheet attached to this bid solicitation. Any deviation from the Standard Insurance Requirements must be requested in writing prior to bid opening. Written approval for any deviation, must be submitted with your bid submission. Failure to comply with this instruction will result in bid rejection.
11. A bid bond will be required with bid submission in the amount of 5% of the total bid, unless otherwise stated in the bid specifications. All sureties must be in original format (no copies). When submitting a bid online, vendors must submit an electronic bid bond through the respective online clearinghouse bond management system(s) as indicated in the electronic bid solicitation on Central Auction House. No scanned paper copies of any bid bond will be accepted as part of the electronic bid submission.
12. This is an as needed basis contract. JEFFERSON PARISH makes no representations on warranties with regard to minimum guaranteed quantities unless otherwise stated in the bid specifications.
13. Freight charges should be included in total cost when quoting. If not quoted FOB DELIVERED, freight must be quoted as a separate item. Bid may be rejected if not quoted FOB DELIVERED or if freight charges are not indicated on bid form.
14. **PUBLIC WORKS BIDS - Completed, Signed and Properly Notarized Affidavits Required;** This applies to all solicitations for construction, alteration or demolition of public buildings or projects, in conformity with the provisions contained in LSA-RS 38:2212.9, LSA-RS 38:2212.10, LSA-RS 38:2224, and Sec 2-923.1 of the Jefferson Parish Code of Ordinances. For bidding purposes, all bidders must submit with bid submission COMPLETED, SIGNED and PROPERLY NOTARIZED Affidavits, including: Non-Conviction Affidavit, Non-Collusion Affidavit, Campaign Contribution Affidavit, Debt Disclosures Affidavit and E-Verify Affidavit. For the convenience of vendors, all affidavits have been combined into one form entitled PUBLIC WORKS BID AFFIDAVIT. This affidavit must be submitted in its original format, and without material alteration, in order to be compliant and for the bid to be considered responsive. A scanned copy of the completed, signed and properly notarized affidavit may be submitted with the bid, however, the successful bidder must submit the original affidavit in its original format and without material alteration upon contract execution. Failure to comply will result in the bid submission being rejected as non-responsive. The Parish reserves the right to award bid to the next lowest responsive and responsible bidder in this event.
15. **NON PUBLIC WORK BIDS - Completed, Signed and Properly Notarized Affidavits Required** in conformity with the provisions contained in LSA – RS 38:2224 and Sec 2-923.1 of the Jefferson Parish Code of Ordinances. For bidding purposes, all bidders must submit with bid submission COMPLETED, SIGNED and PROPERLY NOTARIZED Affidavits, including: Non-Collusion Affidavit, Debt Disclosures Affidavit and Campaign Contribution Affidavit. For the convenience of vendors, all affidavits have been combined into one form entitled NON PUBLIC WORKS BID AFFIDAVIT. This affidavit must be submitted in its original format, and without material alteration, in order to be compliant and for the bid to be considered responsive. A scanned copy of the completed, signed and properly notarized affidavit may be submitted with the bid, however, the successful bidder must submit the original affidavit in its original format and without material alteration upon contract execution. Failure to comply will result in the bid submission being rejected as non-responsive. The Parish reserves the right to award bid to the next lowest responsive and responsible bidder in this event.

DATE: 1/16/2025

BID NO.: 50-00147058

Page: 4

INSTRUCTIONS FOR BIDDERS AND GENERAL CONDITIONS

16. The ensuing contract for this bid solicitation may be eligible for FEMA reimbursement and/or Federal funding/reimbursement. As such, the referenced appendix will be applicable accordingly and shall be considered a part of the bid documents. All applicable certifications must be duly completed, signed and submitted as per the appendix instructions. Failure to submit applicable certifications as per the appendix instructions will result in bid rejection.

17. For this project, the Contractor shall not pay any state or local sales or use taxes on materials and equipment which are affixed and made part of the immovable property of the project or which is permanently incorporated in the project (hereinafter referred to as "applicable materials and equipment"). All purchases of applicable materials or equipment shall be made by the contractor on behalf of and as the agent of Jefferson Parish (Owner), a political subdivision of the State of Louisiana. No state and local sales and use taxes are owed on applicable materials and equipment under the provisions of Act 1029 of the 1991 Regular Session - Louisiana Revised Statute 47:301(8)(c). Owner will furnish to contractor a certificate form which certifies that Owner is not required to pay such state or local sales and use taxes, and contractor shall furnish a copy of such certificate to all vendors or suppliers of the applicable materials and equipment, and report to Owner the amount of taxes not incurred.

It shall be the duty of every parish officer, employee, department, agency, special district, board, and commission: and the duty of every contractor, subcontractor, and licensee of the parish, and the duty of every applicant for certification of eligibility for a parish contract or program, to cooperate with the Inspector General in any investigation, audit, inspection, performance review, or hearing pursuant to Jefferson Parish Code of Ordinances Section 2-155.10(19). By submitting a bid, vendor acknowledges this and will abide by all provisions of the referenced Jefferson Parish Code of Ordinances.

DATE: 1/16/2025

INVITATION TO BID
THIS IS NOT AN ORDER

Page: 5

BID NO.: 50-00147058

JEFFERSON PARISH

PURCHASING DEPARTMENT
P.O. BOX 9
GRETN, LA. 70054-0009
504-364-2678

VENDOR: 27118 BLANK BID COPY VENDOR

PURCHASING SPECIALIST:
SDUMAS

As per LSA-RS 47:301 et seq., all governmental bodies are excluded from payment of sales taxes to any Louisiana taxing body. Quotations shall be based on F.O.B. Agency warehouse or jobsite, anywhere within the Parish as designated by the Purchasing Department.

JEFFERSON PARISH reserves the right to cancel all or any part of an order if not shipped promptly. No charges will be allowed for parking or cartage unless specified in quotation. The order must not be filled at a higher price than quoted. JEFFERSON PARISH reserves the right to cancel at any time and for any reason by issuing a THIRTY (30) day written notice to the contractor.

JEFFERSON PARISH is expecting all products to be new and all work to be done in workman-like manner, according to standard practices. Any deviations or alteration from the specifications must be indicated on the bid form for each item and upon request, product data for same must be submitted by the time specified by the Purchasing Department.

DELIVERY: FOB JEFFERSON PARISH

INDICATE DELIVERY DATE ON EQUIPMENT AND SUPPLIES

35 Business Days

INDICATE STARTING TIME (IN DAYS) FOR CONSTRUCTION WORK

N/A

INDICATE COMPLETION TIME (IN DAYS) FOR CONSTRUCTION WORK

N/A

No installat.
Requested
so None is
included

In the event that addenda are issued with this bid, bidders MUST acknowledge all addenda on the bid form. Bidder must acknowledge receipt of an addendum on the bid form by placing the addendum number as indicated. Failure to acknowledge any addendum on the bid form will result in bid rejection.

Acknowledge Receipt of Addenda: NUMBER: 1
NUMBER: 2
NUMBER: N/A
NUMBER: N/A

LOUISIANA CONTRACTOR'S LICENSE NO.: (if applicable) N/A

*** ALL BIDDERS MUST COMPLETE SECTION BELOW ***

FIRM NAME: <u>Douglas Food Stores Inc</u>	
SIGNATURE: <u>Zachary J. Nieto</u> (Must be signed here)	TITLE: <u>Project Manager</u>
PRINT OR TYPE NAME: <u>Zachary Nieto</u>	
ADDRESS: <u>301 North Street</u>	
CITY, STATE: <u>Bluefield, WV</u>	ZIP: <u>24701</u>
TELEPHONE: <u>(304) 327-0149</u>	FAX: <u>(304) 325-3849</u>
EMAIL ADDRESS: <u>Zach@douglasequipment.us</u>	

TOTAL PRICE OF ALL BID ITEMS: \$ 4,588.62

DATE: 1/16/2025

Page: 6

INVITATION TO BID FROM JEFFERSON PARISH - continued

BID NO.: 50-00147058

SEALED BID

ITEM NUMBER	QUANTITY	U/M	DESCRIPTION OF ARTICLES	UNIT PRICE QUOTED	TOTALS
1	2.00	EA	<p>PURCHASE OF REFRIGERATED BACK BAR CABINET FOR JEFFERSON PARISH GENERAL SERVICES DEPARTMENT</p> <p>0010 - BACK BAR CABINET, REFRIGERATED-PE RPERLICK CORPORATION MODEL NO. BBS60 REFRIGERATED BACK BAR CABINET, TWO-SECTION, 60"W, SELF-CONTAINED REFRIGERATION, 16 CU.FT. INTERNAL VOLUME, DIGITAL THERMOSTAT, LED INTERIOR LIGHTING, FRONT VENTED, AUTOMATIC DEFROST & CONDENSATE EVAPORATOR, INCLUDED FLOOR DRAIN, STAINLESS STEEL INTERIOR, SIDE MOUNT COMPRESSOR, 1/5 HP, R290 HYDROCARBON REFRIGERANT, NSF, CULUS</p> <p>- Quoted as Drop Ship with No Lift Gate</p>	\$ 4588.62	\$ 4588.62



JEFFERSON PARISH

DEPARTMENT OF PURCHASING

CYNTHIA LEE SHENG
PARISH PRESIDENT

RENNY SIMNO
DIRECTOR

January 27, 2025

ADDENDUM # 1

Bid Number: 50-00147058

Bid Opening Date: January 23, 2025 at 11:00 AM

Bid Opening Date Postponed to: January 31, 2025 at 11:00 AM

Description of Bid: Purchase of Refrigerated Back Bar Cabinet for Jefferson Parish General Services Department

REVISION.

This bid has been postponed to January 31, 2025 due to inclement weather.

Sincerely,

Sean Dumas

Sean Dumas
Purchasing Specialist I

Bidders must acknowledge all addenda on the bid form. Bidder acknowledges receipt of this addendum on the bid form by indicating the addendum number listed above. Failure to list each addenda number on the bid form will result in bid rejection.

This addendum is a part of the contract documents and modifies the original bidding documents and specifications. The contents of this addendum shall be included in the contract documents. Changes made by this addendum shall take precedence over the documents of earlier date.

JOSEPH S. YENNI BUILDING - 1221 ELMWOOD PARK BLVD - SUITE 404 - JEFFERSON, LA 70123 - PO BOX 10242 JEFFERSON, LA 70181-0242
OFFICE 504.364.2678

GENERAL GOVERNMENT BUILDING - 200 DERBIGNY ST - SUITE 4400 - GRETN, LA 70053 - PO BOX 9 - GRETN - LA 70054
OFFICE 504.364.2678

EMAIL: PURCHASING@JEFFPARISH.NET

WEBSITE: WWW.JEFFPARISH.NET



CENTRALBIDDING
FROM CENTRAL AUCTION HOUSE

**5000147058 PURCHASE OF REFRIGERATED BACK BAR CABINET FOR
JEFFERSON PARISH GENERAL SERVICES DEPARTMENT**
Jefferson Parish Government

Project documents obtained from www.CentralBidding.com
28-Jan-2025 04:30:36 PM



JEFFERSON PARISH

DEPARTMENT OF PURCHASING

CYNTHIA LEE SHENG
PARISH PRESIDENT

RENNY SIMNO
DIRECTOR

January 28, 2025

ADDENDUM # 2

Bid Number: 50-00147058

Bid Opening Date: January 31, 2025 at 11:00 AM

Description of Bid: Purchase of Refrigerated Back Bar Cabinet for Jefferson Parish General Services Department

CLARIFICATION.

Question: Clarification of the exterior color. Black or Stainless? Model number in the specification is not complete and the description does not say. Also please give the ship to address so freight can be determined and included in bid.

Answer: The refrigerated back bar cabinet is stainless steel and the model number is #BBS60 – 2 Door Model

Deliver To: Jefferson Parish Performing Arts Center
6400 Airline Drive
Metairie, La 70003

Revision.

Please see the attached specification pages included in this addendum, there were inadvertently omitted from the original bid packet.

Sincerely,

Sean Dumas

Sean Dumas
Purchasing Specialist I

Bidders must acknowledge all addenda on the bid form. Bidder acknowledges receipt of this addendum on the bid form by indicating the addendum number listed above. Failure to list each addenda number on the bid form will result in bid rejection.

This addendum is a part of the contract documents and modifies the original bidding documents and specifications. The contents of this addendum shall be included in the contract documents. Changes made by this addendum shall take precedence over the documents of earlier date.

JOSEPH S. YENNI BUILDING - 1221 ELMWOOD PARK BLVD - SUITE 404 - JEFFERSON, LA 70123 - PO BOX 10242 JEFFERSON, LA 70181-0242
OFFICE 504.364.2678

GENERAL GOVERNMENT BUILDING - 200 DERBIGNY ST - SUITE 4400 - GRETN, LA 70053 - PO BOX 9 - GRETN - LA 70054
OFFICE 504.364.2678

EMAIL: PURCHASING@JEFFPARISH.NET

WEBSITE: WWW.JEFFPARISH.NET

Perlick

BBS60

Item#: 1.1

PRODUCT SPECIFICATION SHEETS ► Refrigerated Cabinets



SELF-CONTAINED BACK BAR REFRIGERATOR
1-, 2-, 3- AND 4-DOOR

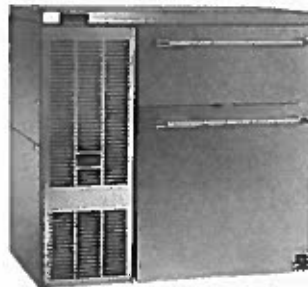


eco friendly
R290 Hydrocarbon
Refrigerant

JOB
AREA
ITEM NO.
MODEL NO.



BBS36 with optional glass w/stainless steel door shown



BBS36 with optional liquor drawers shown

Models	Description
BBS36	1-Door Model
BBS60	2-Door Model
BBS84	3-Door Model
BBS108	4-Door Model

KEY PRODUCT FEATURES AND BENEFITS

- Stainless steel interior & top standard on all perlick Back Bar refrigeration for long life durability and easy to clean hygienic storage
- 2" Foamed-in-place eco-friendly insulation provides energy savings with zero ozone depletion
- NSF/ANSI Standard 7 Listed for open food, beverage, and garnish storage
- End wall compressor & evaporator design increases storage capacity by 14% compared to top mounted designs
- Anti-Sweat heaters prevent condensation from forming, extending door gasket life and protecting flooring below from damage or slip hazards
- Multiple door and drawer styles available in any compartment:
 - Choose between Glass, Stainless-Steel, or Black Vinyl or Customer Provided Overlay
 - Choose between Refrigerator, Wine, or Liquor Drawers designed by Tobin Ellis

Quick Features

- Integrated door & drawer locks standard on all units
- Choose compressor mounted on left or right side of cabinet to match your space
- NSF Rated digital controller allows for easy and precise temperature changes
- Choose between three temperature ranges
 - Refrigerator (34°F-42°F) Factory set to 38°F
 - White Wine (40°F-65°F) Factory set to 45°F
 - Red Wine (40°F-65°F) Factory set to 60°F
- Choose between 6000K white LED lighting or cool blue display lighting
- 1 Year Parts and Labor Warranty, 5 Year Compressor Warranty
- Made in USA

Perlick	BB560	Item#: 1.1
---------	-------	------------

PRODUCT SPECIFICATION SHEETS ► Refrigerated Cabinets

Perlick SELF-CONTAINED BACK BAR REFRIGERATOR
1-, 2-, 3- AND 4- DOOR

MODEL NUMBERS - BB534, BB560, BB584, BB5108

MODEL NUMBERS		BB516	BB560	BB584	BB5108
NUMBER OF COMPARTMENTS/DOORS		1	2	3	4
EXTERIOR CABINET DIMENSIONS	Length - in. (mm)	36 (914)	60 (1524)	84 (2134)	108 (2743)
	Depth - in. (mm)	24 1/4 (620)	24 1/4 (620)	24 1/4 (620)	24 1/4 (620)
	Height - in. (mm)	34 1/4 (878)	34 1/4 (878)	34 1/4 (878)	34 1/4 (878)
INTERIOR CABINET DIMENSIONS	Length - in. (mm)	20 (508)	44 (1118)	68 (1727)	92 (2337)
	Depth - in. (mm)	18 1/4 (476)	18 1/4 (476)	18 1/4 (476)	18 1/4 (476)
	Height - in. (mm)	28 1/4 (724)	28 1/4 (724)	28 1/4 (724)	28 1/4 (724)
INTERNAL VOLUME Net. Cu. Ft. (Litres)		7.4 (210)	16 (453)	24.8 (702)	33.5 (949)
PRODUCT CAPACITY	CASE PACK - 12 OZ. BOTTLE/CAN	182/273	371/553	581/868	791/1183
	STAGGERED - 12 OZ. BOTTLE/CAN	196/292	400/592	628/932	856/1272
SHIPPING WEIGHT Lbs. (kg.)		254 (115)	340 (154)	490 (222)	671 (304)
ELECTRICAL SPECIFICATIONS	Electrical Supply	120 VAC/60 Hz/1 Ph	120 VAC/60 Hz/1 Ph	120 VAC/60 Hz/1 Ph	120 VAC/60 Hz/1 Ph
	Running Load Amps	1.8	2.5	4.2	4.2
	Electrical Connection	Cord connected	Cord connected	Cord connected	Cord connected
	Cord Plug Type	NEMA 5-15	NEMA 5-15	NEMA 5-15	NEMA 5-15
	Cord Length	6'5"	6'5"	6'5"	6'5"
	Defrost Initiation	Automatic	Automatic	Automatic	Automatic
	Defrost Type	Off cycle	Off cycle	Off cycle	Off cycle
	Thermostat	Digital control	Digital control	Digital control	Digital control
REFRIGERATION SPECIFICATIONS	Lighting Type	LED	LED	LED	LED
	Horsepower	1/6	1/3	1/4	1/4
	Refrigerant	R290	R290	R290	R290
	Refrigerant Charge (grams)	90	100	90	90
	Total Heat Rejection at 73°F ambient (BTU/hr)	900	1900	2300	2300
	Factory Temperature Setting - Refrigerator F (°C)	38° (3.3°)	38° (3.3°)	38° (3.3°)	38° (3.3°)
	Temperature Range - Refrigerator F (°C)	33°-40° (0.5°-4.5°)	33°-40° (0.5°-4.5°)	33°-40° (0.5°-4.5°)	33°-40° (0.5°-4.5°)
	Factory Temperature Setting - White Wine F (°C)	50°-55° (10.0°-13.0°)	50°-55° (10.0°-13.0°)	50°-55° (10.0°-13.0°)	50°-55° (10.0°-13.0°)
	Factory Temperature Setting - Red Wine F (°C)	60°-65° (15.5°-18.0°)	60°-65° (15.5°-18.0°)	60°-65° (15.5°-18.0°)	60°-65° (15.5°-18.0°)
	Temperature Range - Wine F (°C)	50°-65° (10.0°-18.0°)	50°-65° (10.0°-18.0°)	50°-65° (10.0°-18.0°)	50°-65° (10.0°-18.0°)
	Condensing Unit Location	Left or Right	Left or Right	Left or Right	Left or Right
	Expansion Device	Capillary tube	Capillary tube	Capillary tube	Capillary tube
	Pull-Out Condensing Unit	Yes	Yes	Yes	Yes
	Frost Vented	Yes	Yes	Yes	Yes
PLUMBING		None required	None required	None required	None required

Note: Wine Temperature refrigerators do not carry NSF Rating for open food storage. Wine Temperature units are NSF Certified for non-potentially hazardous bottled and canned beverage storage.
Maximum of 2 drawer compartments can be selected for BB584 and BB5108 models

Perlick

BBS60

Item#: 1.1

PRODUCT SPECIFICATION SHEETS ► Refrigerated Cabinets

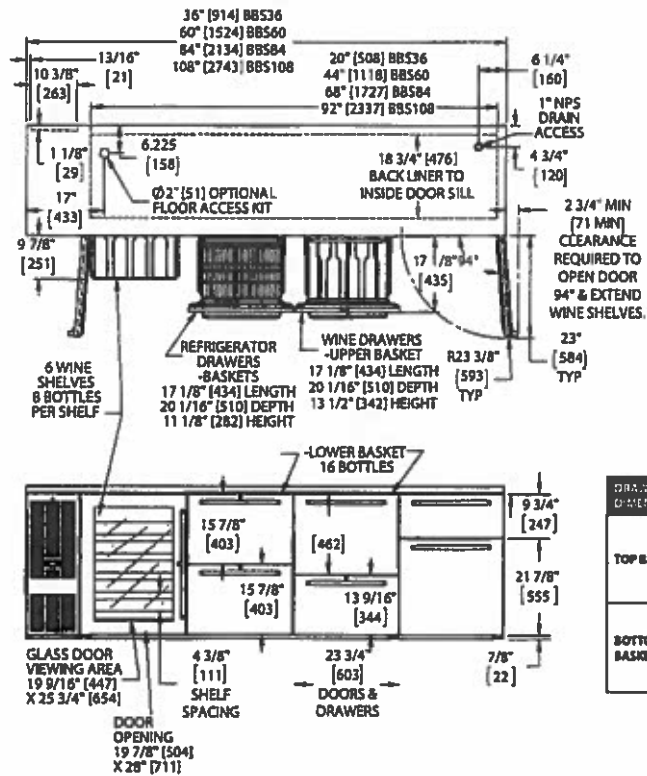
Perlick

SELF-CONTAINED BACK BAR REFRIGERATOR

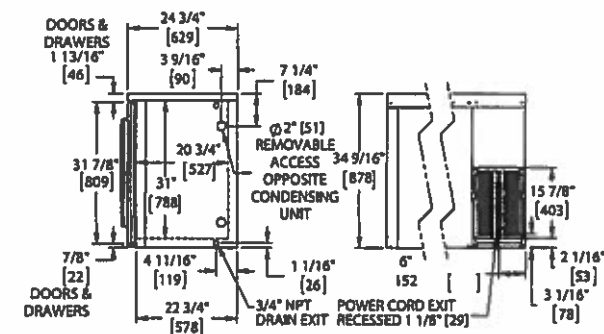
1-, 2-, 3- AND 4-DOOR

Note: Open floor drain not provided on models intended for non-packaged food.

Maximum of 2 drawer compartments available on BBS84 and BBS108 models. Three drawer compartments shown only for dimensional purposes.



DRAWER DIMENSIONS	Refrigerator Drawer			Wine Drawer	Liquid Drawer
	Length (mm)	17 1/8" [434]			
TOP BASKET	Depth (mm)	20 1/16" [510]			
	Max Bottle Height (mm)	11 1/4" [285]	13 1/4" [342]	4 1/4" [129]	
BOTTOM BASKET	Length (mm)	17 1/8" [434]			
	Depth (mm)	20 1/16" [510]			
	Max Bottle Height (mm)	11 1/4" [285]	9 1/4" [234]	17 1/4" [438]	



California Prop 65 Notice:

WARNING: The materials used in this product may contain chemicals known to the State of California to cause cancer and birth defects or other reproductive harm. For more information go to www.P65Warnings.ca.gov.

Form No. 95176
Rev. 06.16.2022

MODEL NUMBERS - BBS36, BBS60, BBS84, BBS108

Perlick

BBS60

Item#: 2.1

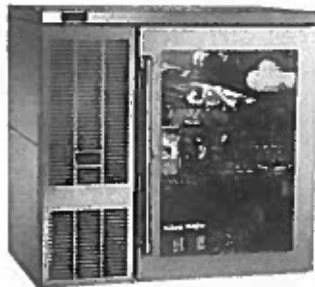
PRODUCT SPECIFICATION SHEETS ► Refrigerated Cabinets

Perlick SELF-CONTAINED BACK BAR REFRIGERATOR
1-, 2-, 3- AND 4- DOOR

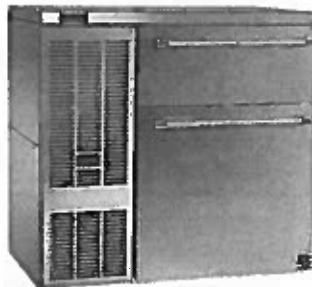


eco friendly
R290 Hydrocarbon
Refrigerant

JOB
AREA
ITEM NO.
MODEL NO.



BBS36 with optional glass w/stainless steel door shown



BBS36 with optional liquor drawers shown

Models	Description
BBS36	1-Door Model
BBS60	2-Door Model
BBS84	3-Door Model
BBS108	4-Door Model

KEY PRODUCT FEATURES AND BENEFITS

- Stainless steel interior & top standard on all perlick Back Bar refrigeration for long life durability and easy to clean hygienic storage
- 2" Foamed-in-place eco-friendly Insulation provides energy savings with zero ozone depletion
- NSF/ANSI Standard 7 Listed for open food, beverage, and garnish storage
- End wall compressor & evaporator design increases storage capacity by 14% compared to top mounted designs
- Anti-Sweat heaters prevent condensation from forming, extending door gasket life and protecting flooring below from damage or slip hazards
- Multiple door and drawer styles available in any compartment:
 - Choose between Glass, Stainless-Steel, or Black Vinyl or Customer Provided Overlay
 - Choose between Refrigerator, Wine, or Liquor Drawers designed by Tobin Ellis

Quick Features

- Integrated door & drawer locks standard on all units
- Choose compressor mounted on left or right side of cabinet to match your space
- NSF Rated digital controller allows for easy and precise temperature changes
- Choose between three temperature ranges
 - Refrigerator (34°F-42°F) Factory set to 38°F
 - White Wine (40°F-65°F) Factory set to 45°F
 - Red Wine (40°F-65°F) Factory set to 60°F
- Choose between 6000K white LED lighting or cool blue display lighting
- 1 Year Parts and Labor Warranty, 5 Year Compressor Warranty
- Made in USA

Perlick	BBS60	Item#: 2.1
---------	-------	------------

PRODUCT SPECIFICATION SHEETS ► Refrigerated Cabinets



MODEL NUMBERS - BBS316, BBS60, BBS64, BBS108

MODEL NUMBERS		BBS316	BBS60	BBS64	BBS108
NUMBER OF COMPARTMENTS/DOORS		1	2	3	4
EXTERIOR CABINET DIMENSIONS	Length - in. (mm)	36 (914)	60 (1524)	84 (2134)	108 (2743)
	Depth - in. (mm)	24 1/4 (629)	24 1/4 (629)	24 1/4 (629)	24 1/4 (629)
	Height - in. (mm)	34 1/4 (878)	34 1/4 (878)	34 1/4 (878)	34 1/4 (878)
INTERIOR CABINET DIMENSIONS	Length - in. (mm)	20 (508)	44 (1118)	68 (1727)	92 (2337)
	Depth - in. (mm)	18 1/4 (476)	18 1/4 (476)	18 1/4 (476)	18 1/4 (476)
	Height - in. (mm)	28 1/4 (724)	28 1/4 (724)	28 1/4 (724)	28 1/4 (724)
INTERNAL VOLUME Net. Cu. Ft. (Litres)		7.4 (210)	16 (453)	24.8 (702)	31.5 (898)
PRODUCT CAPACITY	CASE PACK - 12 OZ. BOTTLE/CAN	182/273	371/553	581/868	791/1183
	STAGGERED - 12 OZ. BOTTLE/CAN	196/292	400/592	628/932	856/1272
SHIPPING WEIGHT Lbs. (kg.)		254 (115)	340 (154)	490 (222)	671 (304)
ELECTRICAL SPECIFICATIONS	Electrical Supply	120 VAC/60 Hz/1 Ph	120 VAC/60 Hz/1 Ph	120 VAC/60 Hz/1 Ph	120 VAC/60 Hz/1 Ph
	Running Load Amps	1.8	2.5	4.2	4.2
	Electrical Connection	Cord connected	Cord connected	Cord connected	Cord connected
	Cord Plug Type	NEMA 5-15	NEMA 5-15	NEMA 5-15	NEMA 5-15
	Cord Length	6'5"	6'5"	6'5"	6'5"
	Defrost Initiation	Automatic	Automatic	Automatic	Automatic
	Defrost Type	Off cycle	Off cycle	Off cycle	Off cycle
	Thermostat	Digital control	Digital control	Digital control	Digital control
REFRIGERATION SPECIFICATIONS	Lighting Type	LED	LED	LED	LED
	Horsepower	1/6	1/5	1/4	1/4
	Refrigerant	R290	R290	R290	R290
	Refrigerant Charge (grams)	90	100	90	90
	Total Heat Rejection at 75°F ambient (BTU/hr)	900	1900	2300	2300
	Factory Temperature Setting - Refrigerator F (°C)	38° (3.3°)	38° (3.3°)	38° (3.3°)	38° (3.3°)
	Temperature Range - Refrigerator F (°C)	33°-40° (0.5°-4.5°)	33°-40° (0.5°-4.5°)	33°-40° (0.5°-4.5°)	33°-40° (0.5°-4.5°)
	Factory Temperature Setting - White Wine F (°C)	50°-55° (10.0°-13.0°)	50°-55° (10.0°-13.0°)	50°-55° (10.0°-13.0°)	50°-55° (10.0°-13.0°)
	Factory Temperature Setting - Red Wine F (°C)	60°-65° (15.5°-18.0°)	60°-65° (15.5°-18.0°)	60°-65° (15.5°-18.0°)	60°-65° (15.5°-18.0°)
	Temperature Range - Wine F (°C)	50°-65° (10.0°-18.0°)	50°-65° (10.0°-18.0°)	50°-65° (10.0°-18.0°)	50°-65° (10.0°-18.0°)
	Condensing Unit Location	Left or Right	Left or Right	Left or Right	Left or Right
	Expansion Device	Capillary tube	Capillary tube	Capillary tube	Capillary tube
	Pull-Out Condensing Unit	Yes	Yes	Yes	Yes
	Front Venting	Yes	Yes	Yes	Yes
PLUMBING		None required	None required	None required	None required

Note: Wine Temperature refrigerators do not carry NSF Rating for open food storage. Wine Temperature units are NSF Certified for non-potentially hazardous bottled and canned beverage storage.
Maximum of 3 drawer compartments can be selected for BBS64 and BBS108 models

Perlick

BBS60

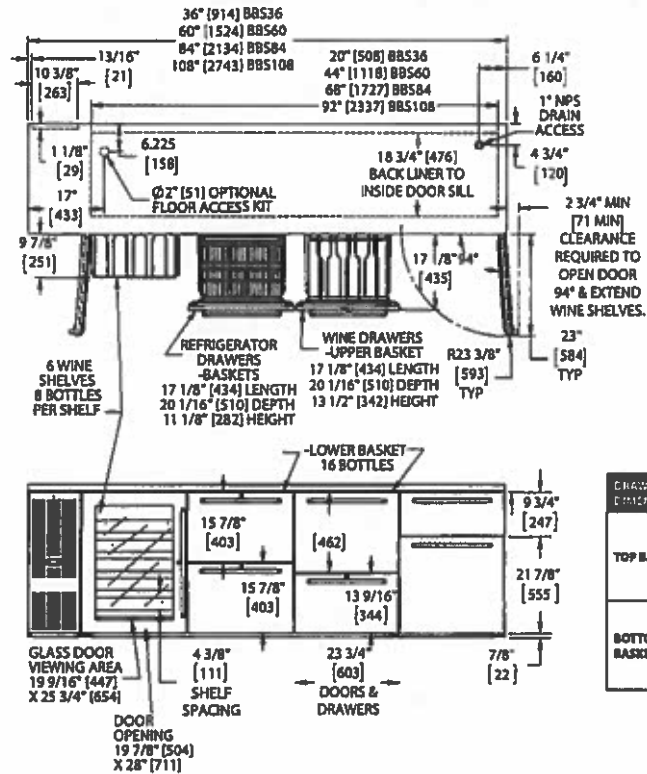
Item#: 2.1

PRODUCT SPECIFICATION SHEETS ► Refrigerated Cabinets

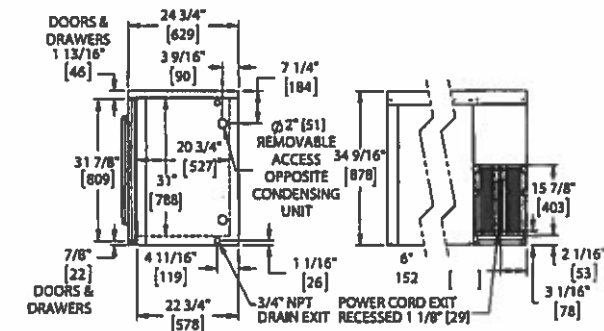


SELF-CONTAINED BACK BAR REFRIGERATOR
1-, 2-, 3- AND 4-DOOR

Note: Open floor drain not provided on models intended for non-packaged food.
Maximum of 2 drawer compartments available on BBS84 and BBS108 models. Three drawer compartments shown only for dimensional purposes.



DRAWER DIMENSIONS	Refrigerator Drawer			Wine Drawer	Liquid Drawer
	Length (mm)	Depth (mm)	Max Bottle Height (mm)	Length (mm)	Depth (mm)
TOP BASKET	17 1/8" [434]	20 1/16" [510]	11 1/4" [285]	13 1/4" [342]	4 1/4" [110]
	Length (mm)	Depth (mm)	Max Bottle Height (mm)	Length (mm)	Depth (mm)
	17 1/8" [434]	20 1/16" [510]	11 1/4" [285]	13 1/4" [342]	4 1/4" [110]
BOTTOM BASKET	17 1/8" [434]	20 1/16" [510]	11 1/4" [285]	9 1/4" [234]	17 1/4" [438]
	Length (mm)	Depth (mm)	Max Bottle Height (mm)	Length (mm)	Depth (mm)
	17 1/8" [434]	20 1/16" [510]	11 1/4" [285]	9 1/4" [234]	17 1/4" [438]



California Prop 65 Notice:

WARNING: The materials used in this product may contain chemicals known to the State of California to cause cancer and birth defects or other reproductive harm. For more information go to www.P65Warnings.ca.gov.

Form No. 95176
Rev. 08.16.2022

MODEL NUMBERS - BBS36, BBS60, BBS84, BBS108



Quote

01/21/2025

Project:
25-0196 Parish of Jefferson
Government

From:
Douglas Equipment
Zach Nieto
301 North St.
Bluefield , WV 24701-4048
304-327-0149
3043270149 1325 (Contact)

Job Reference Number: 149275

Item	Qty	Description
------	-----	-------------

1

**1 ea BACK BAR CABINET, REFRIGERATED**

Perlick Corporation Model No. BBS60

Refrigerated Back Bar Cabinet, two-section, 60"W, self-contained refrigeration, 16 cu.ft. internal volume, digital thermostat, LED interior lighting, front vented, automatic defrost & condensate evaporator, includes floor drain, stainless steel interior, side mount compressor, 1/5 HP, R290 Hydrocarbon refrigerant, NSF, cULus

1 ea **WARNING:** The materials used in this product may contain chemicals known to the State of California to cause cancer and birth defects or other reproductive harm. For more information go to www.P65Warnings.ca.gov

1 ea 120v/60/1-ph, 2.5 amps, NEMA 5-15P

1 ea 5 yr. compressor warranty, 1 yr. parts & labor warranty

1 ea Standard refrigerator

1 ea Stainless steel top - no tapping holes

1 ea Condensing unit location: Left

1 ea Condensing unit cover finish: Black vinyl coated

1 ea End finish: Stainless steel, unfinished, both sides, standard

1 ea Door type, first: solid, black vinyl/field laminated

1 ea Door hinge location, first: Left

1 ea Door handle, first: full length stainless steel handle, 24"

1 ea Shelving style, first: (3) flat shelves

1 ea Door type, second: solid, black vinyl/field laminated

1 ea Door hinge location, second: Right

1 ea Door handle, second: full length stainless steel handle, 24"

1 ea Shelving style, second: (3) flat shelves

1 ea Crisp White LED

Acceptance: _____ Date: _____

Printed Name: _____

PRODUCT SPECIFICATION SHEETS ► Refrigerated Cabinets

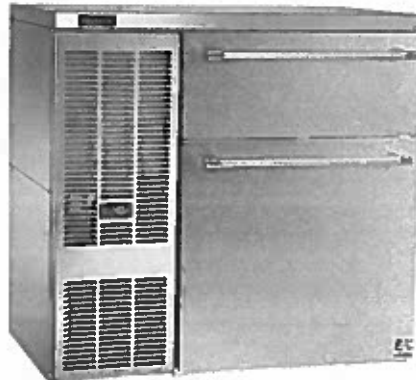

SELF-CONTAINED BACK BAR REFRIGERATOR
 1-, 2-, 3- AND 4-DOOR


eco friendly
R290 Hydrocarbon
Refrigerant

JOB
AREA
ITEM NO.
MODEL NO.



BBS36 with optional glass w/stainless steel door shown



BBS36 with optional liquor drawers shown

Models	Description
BBS36	1-Door Model
BBS60	2-Door Model
BBS84	3-Door Model
BBS108	4-Door Model

KEY PRODUCT FEATURES AND BENEFITS

- Stainless steel interior & top standard on all perlick Back Bar refrigeration for long life durability and easy to clean hygienic storage
- 2" Foamed-in-place eco-friendly insulation provides energy savings with zero ozone depletion
- NSF/ANSI Standard 7 Listed for open food, beverage, and garnish storage
- End wall compressor & evaporator design increases storage capacity by 14% compared to top mounted designs
- Anti-Sweat heaters prevent condensation from forming, extending door gasket life and protecting flooring below from damage or slip hazards
- Multiple door and drawer styles available in any compartment:
 - Choose between Glass, Stainless-Steel, or Black Vinyl or Customer Provided Overlay
 - Choose between Refrigerator, Wine, or Liquor Drawers designed by Tobin Ellis

Quick Features

- Integrated door & drawer locks standard on all units
- Choose compressor mounted on left or right side of cabinet to match your space
- NSF Rated digital controller allows for easy and precise temperature changes
- Choose between three temperature ranges
 - Refrigerator (34°F-42°F) Factory set to 38°F
 - White Wine (40°F-65°F) Factory set to 45°F
 - Red Wine (40°F-65°F) Factory set to 60°F
- Choose between 6000K white LED lighting or cool blue display lighting
- 1 Year Parts and Labor Warranty, 5 Year Compressor Warranty
- Made in USA

Form No. 95176
Rev. 06.16.2022

PERLICK CORPORATION 8300 W. Good Hope Road, Milwaukee, WI 53223 • 800.558.5592 • perlick.com

PRODUCT SPECIFICATION SHEETS ► Refrigerated Cabinets


SELF-CONTAINED BACK BAR REFRIGERATOR
 1-, 2-, 3- AND 4-DOOR

MODEL NUMBERS - BBS36, BBS60, BBS84, BBS108

MODEL NUMBERS		BBS36	BBS60	BBS84	BBS108
NUMBER OF COMPARTMENTS/DOORS		1	2	3	4
EXTERIOR CABINET DIMENSIONS	Length - in. (mm)	36 (914)	60 (1524)	84 (2134)	108 (2743)
	Depth - in. (mm)	24¾ (629)	24¾ (629)	24¾ (629)	24¾ (629)
	Height - in. (mm)	34¾ (878)	34¾ (878)	34¾ (878)	34¾ (878)
INTERIOR CABINET DIMENSIONS	Length - in. (mm)	20 (508)	44 (1118)	68 (1727)	92 (2337)
	Depth - in. (mm)	18¾ (476)	18¾ (476)	18¾ (476)	18¾ (476)
	Height - in. (mm)	28½ (724)	28½ (724)	28½ (724)	28½ (724)
INTERNAL VOLUME Net. Cu. Ft. (Litres)		7.4 (210)	16 (453)	24.8 (702)	33.5 (949)
PRODUCT CAPACITY	CASE PACK - 12 OZ. BOTTLE/CAN	182/273	371/553	581/868	791/1183
	STAGGERED - 12 OZ. BOTTLE/CAN	196/292	400/592	628/932	856/1272
SHIPPING WEIGHT Lbs. (kg.)		254 (115)	340 (154k)	490 (222)	671 (304)
ELECTRICAL SPECIFICATIONS	Electrical Supply	120 VAC/60 Hz/1 Ph	120 VAC/60 Hz/1 Ph	120 VAC/60 Hz/1 Ph	120 VAC/60 Hz/1 Ph
	Running Load Amps	1.8	2.5	4.2	4.2
	Electrical Connection	Cord connected	Cord connected	Cord connected	Cord connected
	Cord Plug Type	NEMA 5-15	NEMA 5-15	NEMA 5-15	NEMA 5-15
	Cord Length	6'5"	6'5"	6'5"	6'5"
	Defrost Initiation	Automatic	Automatic	Automatic	Automatic
	Defrost Type	Off cycle	Off cycle	Off cycle	Off cycle
	Thermostat	Digital control	Digital control	Digital control	Digital control
	Lighting Type	LED	LED	LED	LED
REFRIGERATION SPECIFICATIONS	Horsepower	1/6	1/5	1/4	1/4
	Refrigerant	R290	R290	R290	R290
	Refrigerant Charge (grams)	90	100	90	90
	Total Heat Rejection at 75F ambient (BTU/hr)	900	1900	2300	2300
	Factory Temperature Setting - Refrigerator F (C)	38° (3.3°)	38° (3.3°)	38° (3.3°)	38° (3.3°)
	Temperature Range - Refrigerator F (C)	33°-40° (0.5°-4.5°)	33°-40° (0.5°-4.5°)	33°-40° (0.5°-4.5°)	33°-40° (0.5°-4.5°)
	Factory Temperature Setting - White Wine F (C)	50°-55° (10.0°-13.0°)	50°-55° (10.0°-13.0°)	50°-55° (10.0°-13.0°)	50°-55° (10.0°-13.0°)
	Factory Temperature Setting - Red Wine F (C)	60°-65° (15.5°-18.0°)	60°-65° (15.5°-18.0°)	60°-65° (15.5°-18.0°)	60°-65° (15.5°-18.0°)
	Temperature Range - Wine F (C)	50°-65° (10.0°-18.0°)	50°-65° (10.0°-18.0°)	50°-65° (10.0°-18.0°)	50°-65° (10.0°-18.0°)
	Condensing Unit Location	Left or Right	Left or Right	Left or Right	Left or Right
	Expansion Device	Capillary tube	Capillary tube	Capillary tube	Capillary tube
	Pull-Out Condensing Unit	Yes	Yes	Yes	Yes
	Front Vented	Yes	Yes	Yes	Yes
PLUMBING		None required	None required	None required	None required

Note: Wine Temperature refrigerators do not carry NSF Rating for open food storage. Wine Temperature units are NSF Certified for non-potentially hazardous bottled and canned beverage storage.
 Maximum of 2 drawer compartments can be selected for BBS84 and BBS108 models

 Form No. 95176
 Rev. 06.16.2022

PERLICK CORPORATION 8300 W. Good Hope Road, Milwaukee, WI 53223 • 800.558.5592 • perlick.com

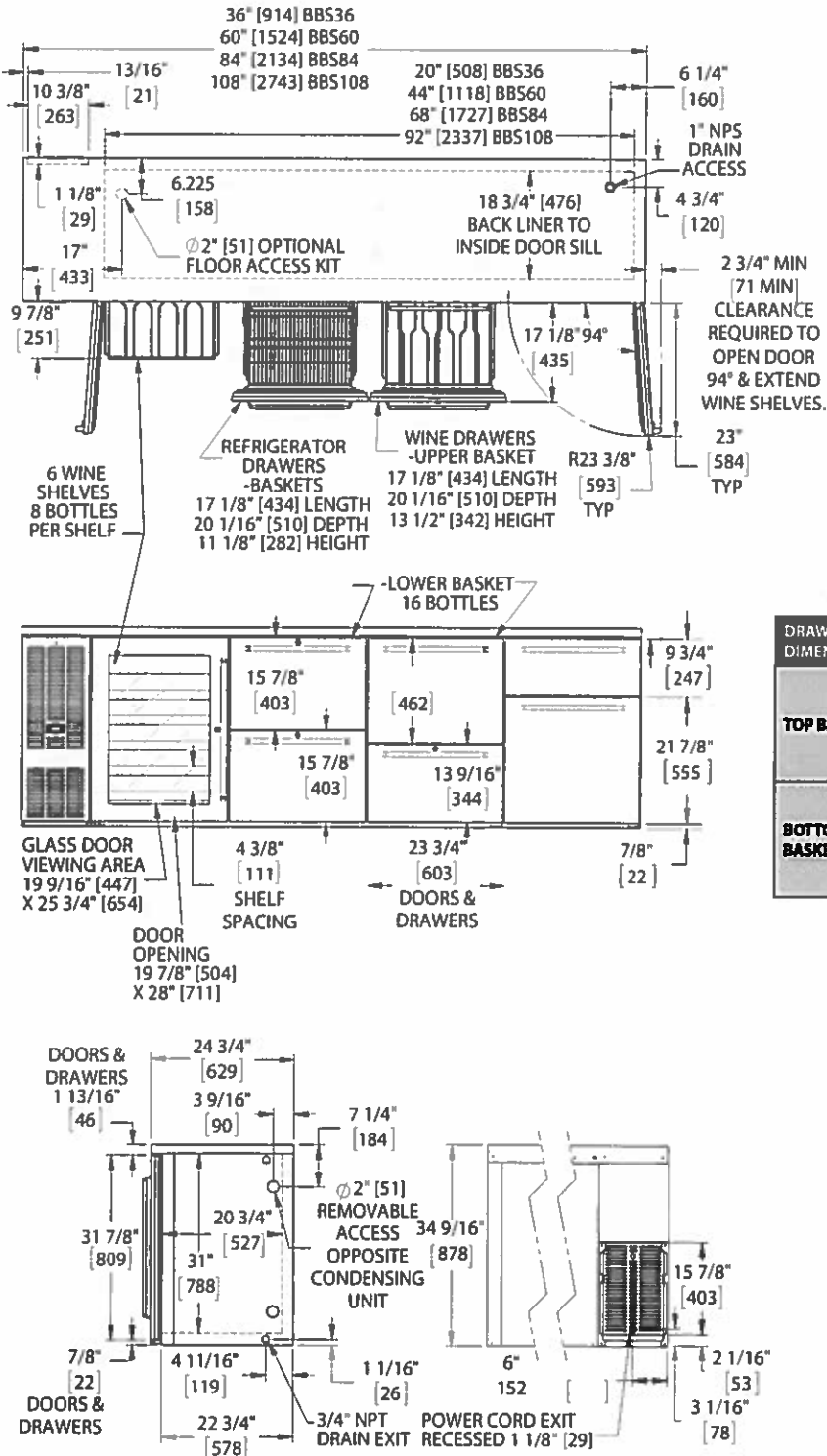
PRODUCT SPECIFICATION SHEETS ► Refrigerated Cabinets

SELF-CONTAINED BACK BAR REFRIGERATOR

1-, 2-, 3- AND 4-DOOR

Note: Open floor drain not provided on models intended for non-packaged food.

Maximum of 2 drawer compartments available on BBS84 and BBS108 models. Three drawer compartments shown only for dimensional purposes.



DRAWER DIMENSIONS		Refrigerator Drawer	Wine Drawer	Liquor Drawer
TOP BASKET	Length [mm]	17 1/8" [434]		
	Depth [mm]	20 1/16" [510]		
	Max Bottle Height [mm]	11 1/4" [285]	13 1/2" [342]	4 3/4" [120]
BOTTOM BASKET	Length [mm]	17 1/8" [434]		
	Depth [mm]	20 1/16" [510]		
	Max Bottle Height [mm]	11 1/4" [285]	9 3/4" [234]	17 1/2" [438]

California Prop 65 Notice:



WARNING: The materials used in this product may contain chemicals known to the State of California to cause cancer and birth defects or other reproductive harm. For more information go to www.P65Warnings.ca.gov.

Form No. 95176
Rev. 06.16.2022

PERLICK CORPORATION 8300 W. Good Hope Road, Milwaukee, WI 53223 • 800.558.5592 • perlick.com

Request for Taxpayer Identification Number and Certification

► Go to www.irs.gov/FormW9 for instructions and the latest information.

Give Form to the
requester. Do not
send to the IRS.

Print or type.
See Specific instructions on page 3.

1 Name (as shown on your income tax return). Name is required on this line; do not leave this line blank. Douglas Food Stores, Inc.	
2 Business name/disregarded entity name, if different from above Douglas Equipment	
3 Check appropriate box for federal tax classification of the person whose name is entered on line 1. Check only one of the following seven boxes. <input type="checkbox"/> Individual/sole proprietor or single-member LLC <input type="checkbox"/> C Corporation <input checked="" type="checkbox"/> S Corporation <input type="checkbox"/> Partnership <input type="checkbox"/> Trust/estate <input type="checkbox"/> Limited liability company. Enter the tax classification (C=C corporation, S=S corporation, P=Partnership) ► Note: Check the appropriate box in the line above for the tax classification of the single-member owner. Do not check another LLC if the LLC is classified as a single-member LLC that is disregarded from the owner unless the owner of the LLC is disregarded from the owner should check the appropriate box for the tax classification of its owner. <input type="checkbox"/> Other (see instructions) ►	
4 Exemptions (codes apply only to certain entities, not individuals; see instructions on page 3): Exempt payee code (if any) _____ Exemption from FATCA reporting code (if any) _____ (Applies to accounts maintained outside the U.S.)	
5 Address (number, street, and apt. or suite no.) See instructions. 301 North Street	Requester's name and address (optional)
6 City, state, and ZIP code Bluefield, WV 24701	
7 List account number(s) here (optional)	

Part I Taxpayer Identification Number (TIN)

Enter your TIN in the appropriate box. The TIN provided must match the name given on line 1 to avoid backup withholding. For individuals, this is generally your social security number (SSN). However, for a resident alien, sole proprietor, or disregarded entity, see the instructions for Part I, later. For other entities, it is your employer identification number (EIN). If you do not have a number, see *How to get a TIN*, later.

Note: If the account is in more than one name, see the instructions for line 1. Also see *What Name and Number To Give the Requester* for guidelines on whose number to enter.

Social security number								
			-					
OR								
Employer identification number								
5	5		-	0	5	8	5	8 9 0

Part II Certification

Under penalties of perjury, I certify that:

- The number shown on this form is my correct taxpayer identification number (or I am waiting for a number to be issued to me); and
- I am not subject to backup withholding because: (a) I am exempt from backup withholding, or (b) I have not been notified by the Internal Revenue Service (IRS) that I am subject to backup withholding as a result of a failure to report all interest or dividends, or (c) the IRS has notified me that I am no longer subject to backup withholding; and
- I am a U.S. citizen or other U.S. person (defined below); and
- The FATCA code(s) entered on this form (if any) indicating that I am exempt from FATCA reporting is correct.

Certification instructions. You must cross out item 2 above if you have been notified by the IRS that you are currently subject to backup withholding because you have failed to report all interest and dividends on your tax return. For real estate transactions, item 2 does not apply. For mortgage interest paid, acquisition or abandonment of secured property, cancellation of debt, contributions to an individual retirement arrangement (IRA), and generally, payments other than interest and dividends, you are not required to sign the certification, but you must provide your correct TIN. See the instructions for Part II, later.

Sign Here
Signature of U.S. person ► *Michael J. Holbrook*

Date ► *1/2/24*

General Instructions

Section references are to the Internal Revenue Code unless otherwise noted.

Future developments. For the latest information about developments related to Form W-9 and its instructions, such as legislation enacted after they were published, go to www.irs.gov/FormW9.

Purpose of Form

An individual or entity (Form W-9 requester) who is required to file an information return with the IRS must obtain your correct taxpayer identification number (TIN) which may be your social security number (SSN), individual taxpayer identification number (ITIN), adoption taxpayer identification number (ATIN), or employer identification number (EIN), to report on an information return the amount paid to you, or other amount reportable on an information return. Examples of information returns include, but are not limited to, the following.

- Form 1099-INT (interest earned or paid)

- Form 1099-DIV (dividends, including those from stocks or mutual funds)
 - Form 1099-MISC (various types of income, prizes, awards, or gross proceeds)
 - Form 1099-B (stock or mutual fund sales and certain other transactions by brokers)
 - Form 1099-S (proceeds from real estate transactions)
 - Form 1099-K (merchant card and third party network transactions)
 - Form 1098 (home mortgage interest), 1098-E (student loan interest), 1098-T (tuition)
 - Form 1099-C (canceled debt)
 - Form 1099-A (acquisition or abandonment of secured property)
- Use Form W-9 only if you are a U.S. person (including a resident alien), to provide your correct TIN.

If you do not return Form W-9 to the requester with a TIN, you might be subject to backup withholding. See *What is backup withholding*, later.



CERTIFICATE OF LIABILITY INSURANCE

DATE (MM/DD/YYYY)
9/12/2024

THIS CERTIFICATE IS ISSUED AS A MATTER OF INFORMATION ONLY AND CONFERS NO RIGHTS UPON THE CERTIFICATE HOLDER. THIS CERTIFICATE DOES NOT AFFIRMATIVELY OR NEGATIVELY AMEND, EXTEND OR ALTER THE COVERAGE AFFORDED BY THE POLICIES BELOW. THIS CERTIFICATE OF INSURANCE DOES NOT CONSTITUTE A CONTRACT BETWEEN THE ISSUING INSURER(S), AUTHORIZED REPRESENTATIVE OR PRODUCER, AND THE CERTIFICATE HOLDER.

IMPORTANT: If the certificate holder is an ADDITIONAL INSURED, the policy(ies) must have ADDITIONAL INSURED provisions or be endorsed. If SUBROGATION IS WAIVED, subject to the terms and conditions of the policy, certain policies may require an endorsement. A statement on this certificate does not confer rights to the certificate holder in lieu of such endorsement(s).

PRODUCER Bankers Insurance, LLC dba BI Insurance Agency, LLC One Stafford Commons Princeton WV 24740	CONTACT NAME: Cynthia Crews PHONE (A/C, No, Ext): 540-735-1702 FAX (A/C, No): 800-899-0146 E-MAIL: ccrews@bankersinsurance.net ADDRESS: ccrews@bankersinsurance.net
INSURED Douglas Equipment, Douglas Food Stores, Inc. dba Douglas Equipment 301 North Street Bluefield WV 24701	INSURER(S) AFFORDING COVERAGE INSURER A: Westfield National Insurance Company INSURER B: Westfield Insurance Company INSURER C: Employers Assurance Company INSURER D: INSURER E: INSURER F:

License#: 6387078
DOUGEQU-01

COVERAGES **CERTIFICATE NUMBER: 1119167169** **REVISION NUMBER:**

THIS IS TO CERTIFY THAT THE POLICIES OF INSURANCE LISTED BELOW HAVE BEEN ISSUED TO THE INSURED NAMED ABOVE FOR THE POLICY PERIOD INDICATED. NOTWITHSTANDING ANY REQUIREMENT, TERM OR CONDITION OF ANY CONTRACT OR OTHER DOCUMENT WITH RESPECT TO WHICH THIS CERTIFICATE MAY BE ISSUED OR MAY PERTAIN, THE INSURANCE AFFORDED BY THE POLICIES DESCRIBED HEREIN IS SUBJECT TO ALL THE TERMS, EXCLUSIONS AND CONDITIONS OF SUCH POLICIES. LIMITS SHOWN MAY HAVE BEEN REDUCED BY PAID CLAIMS.

INSR LTR	TYPE OF INSURANCE	ADDL INSD	SUBR WV	POLICY NUMBER	POLICY EFF (MM/DD/YYYY)	POLICY EXP (MM/DD/YYYY)	LIMITS
A	<input checked="" type="checkbox"/> COMMERCIAL GENERAL LIABILITY <input type="checkbox"/> CLAIMS-MADE <input checked="" type="checkbox"/> OCCUR GEN'L AGGREGATE LIMIT APPLIES PER: <input checked="" type="checkbox"/> POLICY <input type="checkbox"/> PRO-JECT <input type="checkbox"/> LOC <input type="checkbox"/> OTHER:			BOP4533485	3/20/2024	3/20/2025	EACH OCCURRENCE \$1,000,000 DAMAGE TO RENTED PREMISES (Ea occurrence) \$500,000 MED EXP (Any one person) \$5,000 PERSONAL & ADV INJURY \$1,000,000 GENERAL AGGREGATE \$2,000,000 PRODUCTS - COMP/OP AGG \$2,000,000 \$
A	<input checked="" type="checkbox"/> AUTOMOBILE LIABILITY <input checked="" type="checkbox"/> ANY AUTO <input type="checkbox"/> OWNED AUTOS ONLY <input type="checkbox"/> SCHEDULED AUTOS <input checked="" type="checkbox"/> HIRED AUTOS ONLY <input checked="" type="checkbox"/> NON-OWNED AUTOS ONLY			BOP4533485	3/20/2024	3/20/2025	COMBINED SINGLE LIMIT (Ea accident) \$1,000,000 BODILY INJURY (Per person) \$ BODILY INJURY (Per accident) \$ PROPERTY DAMAGE (Per accident) \$ \$
A	<input checked="" type="checkbox"/> UMBRELLA LIAB <input checked="" type="checkbox"/> OCCUR <input type="checkbox"/> EXCESS LIAB <input type="checkbox"/> CLAIMS-MADE <input type="checkbox"/> DED <input checked="" type="checkbox"/> RETENTION \$0			BOP4533485	3/20/2024	3/20/2025	EACH OCCURRENCE \$2,000,000 AGGREGATE \$2,000,000 \$
C	WORKERS COMPENSATION AND EMPLOYERS' LIABILITY ANY PROPRIETOR/PARTNER/EXECUTIVE OFFICER/MEMBER EXCLUDED? (Mandatory in NH) If yes, describe under DESCRIPTION OF OPERATIONS below	Y/N <input type="checkbox"/>	N/A	EIG458882804	8/1/2024	8/1/2025	PER STATUTE <input type="checkbox"/> OTH-ER <input type="checkbox"/> WV Broad Form E.L. EACH ACCIDENT \$1,000,000 E.L. DISEASE - EA EMPLOYEE \$1,000,000 E.L. DISEASE - POLICY LIMIT \$1,000,000
B	Installation			BSP145024Q	3/20/2024	3/20/2025	Any One Location Limit Per Disaster 143,500 287,000

DESCRIPTION OF OPERATIONS / LOCATIONS / VEHICLES (ACORD 101, Additional Remarks Schedule, may be attached if more space is required)
Laurence Douglas and Patricia Douglas are excluded from Workers Compensation coverage

CERTIFICATE HOLDER

CANCELLATION

"For Information Only"

SHOULD ANY OF THE ABOVE DESCRIBED POLICIES BE CANCELLED BEFORE THE EXPIRATION DATE THEREOF, NOTICE WILL BE DELIVERED IN ACCORDANCE WITH THE POLICY PROVISIONS.

AUTHORIZED REPRESENTATIVE

Cynthia Crews

© 1988-2015 ACORD CORPORATION. All rights reserved.