



CENTRALBIDDING
FROM CENTRAL AUCTION HOUSE

5000135057 TWO YEAR CONTRACT FOR UNIFORMS, ATHLETIC APPAREL, BADGES, DRESS UNIFORMS, HATS/CAPS, DRESS BELTS, SHOES, NAME TAGS & RANK INSIGNIA FOR THE JEFFERSON PARISH FIRE DEPARTMENT.

Jefferson Parish Government

Project documents obtained from www.CentralBidding.com

30-Jun-2021 12:42:54 PM



Bid Number 50-00135057

Two year contract for uniforms, athletic apparel, badges, dress uniforms, hats/caps, dress belts, shoes, name tags & rank insignia for the Jefferson Parish Fire Department.

BID DUE: JULY 15, 2021 AT 2:00 PM

ATTENTION VENDORS!!!

Please review all pages and respond accordingly, complying with all provisions in the technical specifications and Jefferson Parish Instructions for Bidders and General Terms and Conditions. All bids must be received on the Purchasing Department's eProcurement site, www.jeffparishbids.net, by the bid due date and time. Late bids will not be accepted.

**Jefferson Parish Purchasing Department
200 Derbigny Street
General Government Building, Suite 4400
Gretna, LA 70053
Donna Reamey
Email: Dreamey@jeffparish.net
Phone: 504-364-2684**

This is for a two year contract for all uniform needs of the Jefferson Parish East Bank Consolidated Fire Department. This contract shall include, but not be limited to dress uniforms, work uniforms, athletic wear, badges, and insignia.

Vendor shall be responsible for sizing of personnel at various fire station locations within the Jefferson Parish East Bank Consolidated Fire Department protection district at the request of the department.

Vendor shall have available uniforms for personnel to try on for fit at time of sizing. The size of each pant leg should match the inseam allowing for the knee patch on certain pants to fall over the knee.

Vendor shall maintain a stock of items to be tried on for sizing throughout the contract period.

Vendor shall be responsible for all alterations with no cost to department or personnel. Tailoring of Class A, B, and C dress uniforms shall be a separate charge.

Vendor shall provide badge tab for tactical shirts. Badge tab must be a comparable material to the garment it is being added to.

Vendor shall provide the American flag (reverse flag) to be sewn on to dress shirts and jackets on the right shoulder.

Vendor shall provide embroidery to designated items.

All items which require embroidery, screen printing, or the application of patches shall incorporate the cost of said embroidery, screen printing, cost of the patches, and the cost of the application of the patches into the price of the item.

Vendor shall package all uniform orders with name of personnel to the outside of bag on labels.

The Fire Department personnel will use a voucher system to purchase uniforms; successful vendor will be required to administer this program. See page two (2) for further information regarding the voucher system.

After said vouchers are fully expensed per the requirements on page 2, successful vendor shall sell to Jefferson Parish Fire Department personnel of individual purchases at the bid price on cash sales.

Vendor shall provide thirty-six (36) hour turn around on alterations and uniform replacement.

Vendor shall sell to Jefferson Parish Fire Department Personnel, with valid department

credentials, on individual purchases, at the bid price on cash sales.

Jefferson Parish Fire Department shall supply the Fire Department patch to be sewn on by vendor to uniform jacket, dress shirts, and tactical shirts.

The Jefferson Parish Fire Department will provide sample artwork, but it will not be camera-ready. Vendor will provide production artwork. Setup charges to be included in bid price.

Vendor shall maintain adequate supplies of most commonly purchased items and sizes.

The verbiage "or equal" throughout this bid refers to an exact match of the specified product. The vendor must submit comparison specifications of the alternative product. The alternative product must have approval by the Fire Department Administration before it can be used in the place of the original product.

****ALL QUANTITIES ARE ESTIMATE ONLY****

VOUCHER SYSTEM

The Jefferson Parish Fire Department will utilize a Voucher System for the purchasing of department required items for this solicitation.

The voucher will be issued by the designated Jefferson Parish Fire Department contact.

The voucher (\$150.00) will be issued annually to each employee and will be added to the employee's existing balance.

The issue date will be April 1 of each year. New Vouchers will be issued throughout the year as new employees are hired.

Successful Vendor shall maintain and provide for an electronic voucher/ledger system and upon request, produce electronic records of all Jefferson Parish Fire Department purchases made on behalf of each of its personnel during the contract period. Additionally, specific invoices and individual item(s) purchased from within the voucher/ledger system shall be provided upon request.

Successful vendor must demonstrate to the Jefferson Parish Fire Department that safeguards are in place to prevent unauthorized purchases from being charged to the Jefferson Parish Fire Department during the contract period. The voucher system should not prevent individual personnel from buying uniform contract items with payment other than voucher funds ("cash sales"). However, the

accounting of voucher purchases shall be distinguished from cash sales purchases.

Successful vendor shall have the capability of receiving electronic notification for purposes of increasing or otherwise modifying the voucher status/balance of each person. Successful vendor must be able to electronically acknowledge these modifications to the Jefferson Parish Fire Department.

The successful vendor shall be responsible for providing Jefferson Parish Fire Department with the following:

- 1. An invoice as backup to each purchase to include (minimum information):**
 - 1. Voucher number**
 - 2. Individual's full Name**
 - 3. Individual's Social Security number or employee number**
 - 4. Starting balance of Individual's voucher account**
 - 5. Ending balance of Individual's voucher account**
 - 6. Individual contract item(s) purchased**
 - 7. Item's contract price**
 - 8. Signature of Individual as proof of receipt of goods**
- 2. A comprehensive listing to include Jefferson Parish Fire Department Personnel (each of its individual personnel), a starting voucher sum, amount of voucher used and balance of voucher available, with the ability to incorporate voucher increases during the contract period.**
- 3. Electronic records of all Jefferson Parish Fire Department purchases made during the contract period. Additionally, specific invoices and individual items purchased shall be provided to Jefferson Parish Fire Department upon request.**
- 4. Vendor shall have the capability of receiving electronic (e-mail) modifications to the individual's account status and the capability of acknowledging these modifications**
- 5. Vendor shall demonstrate that safeguards are in place to prevent unauthorized purchases being charged to the Jefferson Parish Fire Department**

1. Shirts

1.1. Long Sleeve Navy Light Tactical Shirt

Model: Propper F5312 and 53121M (white)

Color: All colors available by manufacturer

Sizes: XS-4XL

Material and Construction:

4.5 oz 65% polyester / 35% cotton lightweight ripstop

Fade-, shrink- and wrinkle-resistant

Teflon™ fabric protector repels stains and liquids

Two box-pleated chest pockets with hook and loop closure

Two chest pen pockets

Gusseted underarm increases range of motion

Hidden collar buttons provide a clean, professional look

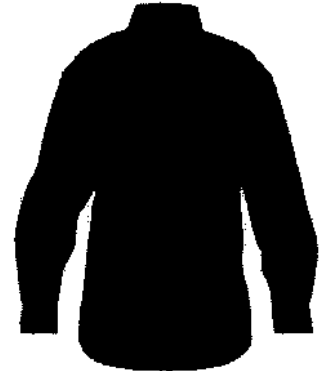
Two zippered chest pockets

Hidden zipper (mock button) front for ease of use

Low profile appearance for use on and off duty

Badge tab to be installed by vendor

Logo: JPFD Suppression patch on left sleeve



1.2. Short Sleeve Navy Light Tactical Shirt

Model: Propper 5311 and 53111M (white)

Color: All colors available by manufacturer

Sizes: XS-4XL

Material and Construction:

5 oz 65% polyester / 35% cotton poplin

Fade-, shrink- and wrinkle-resistant

Teflon™ fabric protector repels stains and liquids

Hidden zipper (mock button) front for ease of use

Two box-pleated chest pockets with hook and loop closure

Two chest pen pockets

Two zippered chest pockets

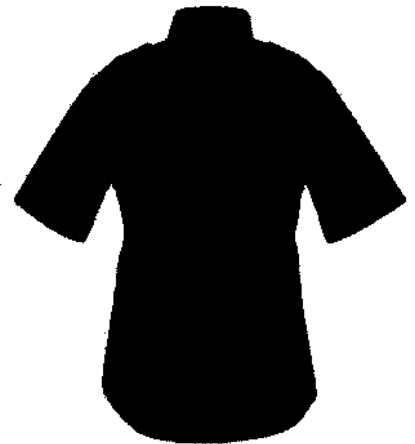
Gusseted underarm increases range of motion

Low profile appearance for use on and off duty

Hidden collar buttons provide a clean, professional look

Badge tab to be installed by vendor

Logo: JPFD Suppression patch on left sleeve



1.3. Propper ICE Long Sleeve Polo Shirt

1.3.1. Men's Propper ICE Long Sleeve Polo Shirt

Model: Propper F5315

Color: All colors available by manufacturer

Sizes: XS-8XL

Material and Construction:

6.8 oz 94% polyester / 6% spandex interlock

Fade-, shrink- and wrinkle-resistant

Advanced, moisture-wicking fabric dries 125% faster than cotton, 30% faster than traditional polyester

Hidden collar buttons

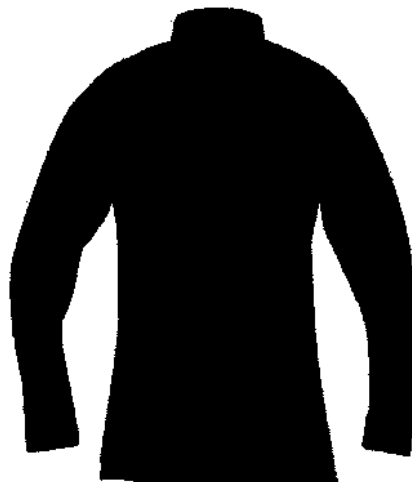
Mic clip on shoulders

Two-channel pen pocket

Gusseted breathable mesh underarm

Mic/sunglass clip

Logo: (a) JPFD cross logo embroidered on left chest, 3.5" x 3.5", name and rank on right chest (1st line: First initial, last name; 2nd line: Rank). Embroidery shall be 3/8" tall, block font, all caps. Color shall be white or gold, to be determined by rank. Or (b) JP Fire Services logo embroidered on left chest, 3.5" x 3.5", reversed U.S. flag on right sleeve, 2" x 1".



1.3.2. Women's Propper ICE Long Sleeve Polo Shirt

Model: Propper F5357

Color: All colors available by manufacturer

Sizes: XS-4XL

Material and Construction:

6.8 oz 94% polyester / 6% spandex interlock

Fade-, shrink- and wrinkle-resistant

Advanced, moisture-wicking fabric dries 125% faster than cotton, 30% faster than traditional polyester

Hidden collar buttons

Mic clip on shoulders

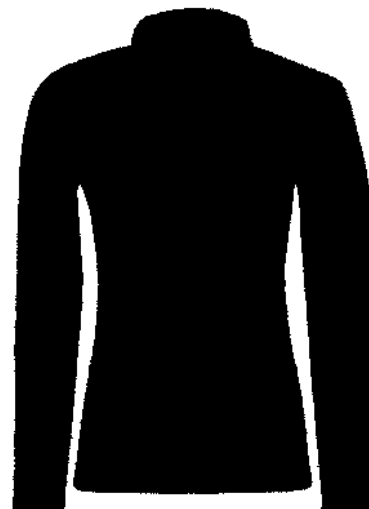
Two-channel pen pocket

Gusseted breathable mesh underarm

Mic/sunglass clip

Extended length for tucking into pant

Logo: (a) JPFD cross logo embroidered on left chest, 3.5" x 3.5", name and rank on right chest (1st line: First initial, last name; 2nd line: Rank). Embroidery shall be 3/8" tall, block font, all caps. Color shall be white or gold, to be determined by rank. Or (b) JP Fire Services logo embroidered on left chest, 3.5" x 3.5", reversed U.S. flag on right sleeve, 2" x 1".



1.4. Propper ICE Short Sleeve Polo Shirt

1.4.1. Men's Propper ICE Short Sleeve Polo Shirt

Model: Propper F5341

Color: All colors available by manufacturer

Sizes: XS-8XL

Material and Construction:

6.8 oz 94% polyester / 6% spandex interlock

Fade-, shrink- and wrinkle-resistant

Advanced, moisture-wicking fabric dries 125% faster than cotton, 30% faster than traditional polyester

Hidden collar buttons

Mic clip on shoulders

Two-channel pen pocket

Gusseted breathable mesh underarm

Mic/sunglass clip

Extended length for tucking into pant

Logo: (a) JPFD cross logo embroidered on left chest, 3.5" x 3.5", name and rank on right chest (1st line: First initial, last name; 2nd line: Rank). Embroidery shall be 3/8" tall, block font, all caps. Color shall be white or gold, to be determined by rank. Or (b) JP Fire Services logo embroidered on left chest, 3.5" x 3.5", reversed U.S. flag on right sleeve, 2" x 1".



1.4.2. Women's Propper ICE Short Sleeve Polo Shirt

Model: Propper F5327

Color: All colors available from manufacturer

Sizes: XS-4XL

Material and Construction:

6.8 oz 94% polyester / 6% spandex interlock

Fade-, shrink- and wrinkle-resistant

Advanced, moisture-wicking fabric dries 125% faster than cotton, 30% faster than traditional polyester

Hidden collar buttons

Mic clip on shoulders

Two-channel pen pocket

Gusseted breathable mesh underarm

Mic/sunglass clip

Extended length for tucking into pant

Logo: (a) JPFD cross logo embroidered on left chest, 3.5" x 3.5", name and rank on right chest (1st line: First initial, last name; 2nd line: Rank). Embroidery shall be 3/8" tall, block font, all caps. Color shall be white or gold, to be determined by rank. Or (b) JP Fire Services logo embroidered on left chest, 3.5" x 3.5", reversed U.S. flag on right sleeve, 2" x 1".



1.5. Blended Tactical Polo Shirt

Model: Tru-Spec 24-7 Model 4326

Color: White

Sizes: XS-5XL

Material and Construction:

Comfortable soft knit collar with 'no-curl' inserts

Reinforced half-moon neck yolk

Taped neck

Mic/sunglass holder at bottom of three button
placket with melamine buttons

Gusseted sleeves for greater range of motion

Two pencil sleeve pocket

Side vents with extended back length for easy movement and to assist in keeping the
shirt tucked

Logo: JPFD cross logo embroidered on left chest, 3.5" x 3.5", name and rank on right
chest (1st line: First initial, last name; 2nd line: Rank). Embroidery shall be 3/8" tall,
block font, all caps. Color shall be white or gold, to be determined by rank.



1.6. Mock Turtleneck

Model: Pudala Model 102

Color: Navy

Sizes: S-7XL

Material and Construction:

5.6 oz. 100% cotton

full-cut

mock turtles with lycra in the collar and cuffs

Logo: Two-color JPFD block lettering, 1.0"x3.0" fill type red,
outlined in white or gold stitching determined by rank



1.7. Long Sleeve Uniform Dress Shirts

1.7.1. Men's Long Sleeve White Blended Uniform Dress Shirt

Model: Southeastern Code 3 Model 3103

Color: White

Sizes: Neck sizes 14-22, Sleeve lengths 33-37, incl. long sizes

Material and Construction:

65% polyester / 35% cotton

5 ounce poplin weave

Permenant press with soil release

Lined placket front

Sewn in military creases

Scalloped flaps

Box pleated pockets

Lined shoulder straps



3¾" yoke for comfort

Form fit full length body

Logo: JPDFD Department Patch on left sleeve, 3.5" x 2.25" reversed American flag on right sleeve

1.7.2. Women's Long Sleeve White Blended Uniform Dress Shirt

Model: Southeastern Code 3 Model L3103

Color: White

Sizes: Bust sizes 30-50, Sleeve lengths 30-33, including long sizes

Material and Construction:

65% polyester / 35% cotton

5 ounce poplin weave

Permenant press with soil release

Lined placket front

Sewn in military creases

Scalloped flaps

Box pleated pockets

Lined shoulder straps

3¾" yoke for comfort

Form fit full length body

Logo: JPDFD Department Patch on left sleeve, 3.5" x 2.25" reversed American flag on right sleeve

1.7.3. Men's Long Sleeve White Poly Uniform Dress Shirt

Model: Flying Cross Command 35W78

Color: White

Sizes: Neck sizes 14-22, Sleeve lengths 32-38, including long sizes

Material and Construction:

Shoulder straps cross stitched symmetrically for neater appearance

Pleated pockets and scalloped flaps with Velcro® closures - includes hidden pen/pencil pocket on left breast pocket

Full badge sling

Supercrease® military-styled creases front and back

High luster polyester twill finish on collar and yoke

Optional concealed zipper front may be added

Logo: JPDFD Department Patch on left sleeve, 3.5" x 2.25" reversed American flag on right sleeve

1.7.4. Women's Long Sleeve White Poly Uniform Dress Shirt

Model: Flying Cross Command 126R78

Color: White

Sizes: 28-50, including long sizes

Material and Construction:

Shoulder straps cross stitched symmetrically for neater appearance
Pleated pockets and scalloped flaps with Velcro® closures - includes hidden pen/pencil pocket on left breast pocket

Full badge sling

Supercrease® military-styled creases front and back

High luster polyester twill finish on collar and yoke

Optional concealed zipper front may be added

Logo: JPDFD Department Patch on left sleeve, 3.5" x 2.25" reversed American flag on right sleeve

1.7.5. Men's Long Sleeve Light Blue Blended Uniform Dress Shirt

Model: Southeastern Code 3 Model 3102

Color: Blue

Sizes: Neck sizes 14-22, Sleeve lengths 33-37, incl. long sizes

Material and Construction:

65% polyester / 35% cotton

5 ounce poplin weave

Permenant press with soil release

Lined placket front

Sewn in military creases

Scalloped flaps

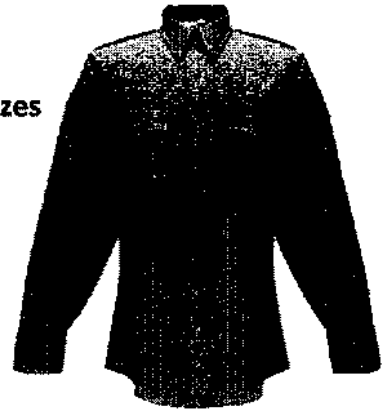
Box pleated pockets

Lined shoulder straps

3¾" yoke for comfort

Form fit full length body

Logo: JPDFD Department Patch on left sleeve, 3.5" x 2.25" reversed American flag on right sleeve



1.7.6. Women's Long Sleeve Light Blue Blended Uniform Dress Shirt

Model: Southeastern Code 3 Model L3102

Color: Blue

Sizes: Bust sizes 30-50, Sleeve lengths 30-33, including long sizes

Material and Construction:

65% polyester / 35% cotton

5 ounce poplin weave

Permenant press with soil release

Lined placket front

Sewn in military creases

Scalloped flaps

Box pleated pockets

Lined shoulder straps

3¾" yoke for comfort

Form fit full length body

Logo: JPDFD Department Patch on left sleeve, 3.5" x 2.25" reversed American flag on right sleeve

1.7.7. Men's Long Sleeve Light Blue Poly Uniform Dress Shirt

Model: Flying Cross Command 33W78Z

Color: Medium Blue

Sizes: Neck sizes 14-22, Sleeve lengths 32-38, including long sizes

Material and Construction:

Shoulder straps cross stitched symmetrically for neater appearance

Pleated pockets and scalloped flaps with Velcro® closures - includes hidden pen/pencil pocket on left breast pocket

Full badge sling

Supercrease® military-styled creases front and back

High luster polyester twill finish on collar and yoke

Optional concealed zipper front may be added

Logo: JPDFD Department Patch on left sleeve, 3.5" x 2.25" reversed American flag on right sleeve

1.7.8. Women's Long Sleeve Light Blue Poly Uniform Dress Shirt

Model: Flying Cross Command 126R78

Color: Medium Blue

Sizes: 28-52, including long sizes

Material and Construction:

Shoulder straps cross stitched symmetrically for neater appearance

Pleated pockets and scalloped flaps with Velcro® closures - includes hidden pen/pencil pocket on left breast pocket

Full badge sling

Supercrease® military-styled creases front and back

High luster polyester twill finish on collar and yoke

Optional concealed zipper front may be added

Logo: JPDFD Department Patch on left sleeve, 3.5" x 2.25" reversed American flag on right sleeve

1.8. Short Sleeve Uniform Dress Shirts

1.8.1. Men's Short Sleeve White Blended Uniform Dress Shirt

Model: Southeastern Code 3 3203

Color: White

Sizes: S-5XL, including long sizes

Material and Construction:



65% polyester / 35% cotton
5 ounce poplin weave
Permenant press with soil release
Lined placket front
Sewn in military creases
Scalloped flaps
Box pleated pockets
Lined shoulder straps
3¾" yoke for comfort
Form fit full length body

Logo: JPFD Department Patch on left sleeve, 3.5" x 2.25" reversed American flag on right sleeve

1.8.2. Women's Short Sleeve White Blended Uniform Dress Shirt

Model: Southeastern Code 3 L3203

Color: White

Sizes: 30-50, including long sizes

Material and Construction:

65% polyester / 35% cotton
5 ounce poplin weave
Permenant press with soil release
Lined placket front
Sewn in military creases
Scalloped flaps
Box pleated pockets
Lined shoulder straps
3¾" yoke for comfort
Form fit full length body

Logo: JPFD Department Patch on left sleeve, 3.5" x 2.25" reversed American flag on right sleeve

1.8.3. Men's Short Sleeve White Poly Uniform Dress Shirt

Model: Flying Cross Command 85R78

Color: White

Sizes: 14.5-23, including long sizes

Material and Construction:

Shoulder straps cross stitched symmetrically for neater appearance
Pleated pockets and scalloped flaps with Velcro® closures - includes hidden pen/pencil pocket on left breast pocket
Full badge sling
Supercrease® military-styled creases front and back
High luster polyester twill finish on collar and yoke
Optional concealed zipper front may be added

Logo: JPFD Department Patch on left sleeve, 3.5" x 2.25" reversed American flag on right sleeve

1.8.4. Women's Short Sleeve White Poly Uniform Dress Shirt

Model: Flying Cross Command 176R78

Color: White

Sizes: 28-54, including long sizes

Material and Construction:

Shoulder straps cross stitched symmetrically for neater appearance

Pleated pockets and scalloped flaps with Velcro® closures - includes hidden pen/pencil pocket on left breast pocket

Full badge sling

Supercrease® military-styled creases front and back

High luster polyester twill finish on collar and yoke

Optional concealed zipper front may be added

Logo: JPFD Department Patch on left sleeve, 3.5" x 2.25" reversed American flag on right sleeve

1.8.5. Men's Short Sleeve Light Blue Blended Uniform Dress Shirt

Model: Southeastern Code 3 3202

Color: Blue

Sizes: S-5XL, including long sizes

Material and Construction:

65% polyester / 35% cotton

5 ounce poplin weave

Permenant press with soil release

Lined placket front

Sewn in military creases

Scalloped flaps

Box pleated pockets

Lined shoulder straps

3¾" yoke for comfort

Form fit full length body

Logo: JPFD Department Patch on left sleeve, 3.5" x 2.25" reversed American flag on right sleeve



1.8.6. Women's Short Sleeve Light Blue Blended Uniform Dress Shirt

Model: Southeastern Code 3 L3202

Color: Blue

Sizes: 30-50, including long sizes

Material and Construction:

65% polyester / 35% cotton

5 ounce poplin weave

Permenant press with soil release

Lined placket front

Sewn in military creases

Scalloped flaps

Box pleated pockets

Lined shoulder straps

3¾" yoke for comfort

Form fit full length body

Logo: JPFD Department Patch on left sleeve, 3.5" x 2.25" reversed American flag on right sleeve

1.8.7. Men's Short Sleeve Light Blue Poly Uniform Dress Shirt

Model: Flying Cross Command 85R78

Color: Medium Blue

Sizes: 14.5-23, including long sizes

Material and Construction:

Shoulder straps cross stitched symmetrically for neater appearance

Pleated pockets and scalloped flaps with Velcro® closures - includes hidden pen/pencil pocket on left breast pocket

Full badge sling

Supercrease® military-styled creases front and back

High luster polyester twill finish on collar and yoke

Optional concealed zipper front may be added

Logo: JPFD Department Patch on left sleeve, 3.5" x 2.25" reversed American flag on right sleeve

1.8.8. Women's Short Sleeve Light Blue Poly Uniform Dress Shirt

Model: Flying Cross Command 176R78

Color: Medium Blue

Sizes: 28-54, including long sizes

Material and Construction:

Shoulder straps cross stitched symmetrically for neater appearance

Pleated pockets and scalloped flaps with Velcro® closures - includes hidden pen/pencil pocket on left breast pocket

Full badge sling

Supercrease® military-styled creases front and back

High luster polyester twill finish on collar and yoke

Optional concealed zipper front may be added

Logo: JPFD Department Patch on left sleeve, 3.5" x 2.25" reversed American flag on right sleeve

1.9. Nomex Station Wear Shirt

1.9.1. Men's Long Sleeve Nomex Station Shirt

Model: Flying Cross 9820

Color: Navy

Sizes: S-6XL

Material and Construction:

STATION STYLE SHIRT

4.5 oz Nomex® IIIA Aramid fiber (93% Aramid,
5% DuPont™ KEVLAR® fiber, 2% anti-static fibers)

Soil-release fabric

NFPA 1975, 2004 edition. ISO 9001: 2000 Certified

5 sewn-in creases, 2 front, 3 back

Shoulder straps cross-stitched symmetrically for neater appearance

Patch pockets with Velcro® closure

Badge tab to be added by vendor

Conventional collar with permanent collar stays

7-button placket front with concealed snap closure

Logo: JPDFD Suppression Patch on left sleeve



1.9.2. Women's Long Sleeve Nomex Station Shirt

Model: Flying Cross 9830

Color: Navy

Sizes: 28-52

Material and Construction:

STATION STYLE SHIRT

4.5 oz Nomex® IIIA Aramid fiber (93% Aramid,
5% Kevlar®, 2% anti-static fibers)

Soil-release fabric

NFPA 1975, 2004 edition. ISO 9001: 2000 Certified

5 sewn-in creases, 2 front, 3 back

Shoulder straps cross-stitched symmetrically for neater appearance

Patch pockets with Velcro® closure

Badge tab to be added by vendor

Conventional collar with permanent collar stays

7-button placket front

Logo: JPDFD Suppression Patch on left sleeve



1.9.3. Men's Short Sleeve Nomex Station Shirt

Model: 9800

Color: Navy

Sizes: S-6X

Material and Construction:

STATION STYLE SHIRT



ISO 9001:2000 CERTIFIED

4.5 oz. Nomex IIIA Aramid Fiber

Shoulder straps cross-stitched symmetrically for neater appearance

Durable double stitching on yoke, top center, pockets and flaps—Collar features 1/4" top-stitching

Patch pockets and pointed flaps with Velcro closures

Top-of-flap entry with hidden pen/pencil opening on left pocket

7-button placket front with concealed snap closure

2-snap adjustable cuff closure

5 sewn in creases—2 in the front that continue through the pocket and flap, and 3 in the back

Conventional collar and band with permanent collar stays

Badge tab to be added by vendor

Logo: JPFD Suppression Patch on left sleeve

1.9.4. Women's Short Sleeve Nomex Station Shirt

Model: 9810

Color: Navy

Sizes: 28-52

Material and Construction:

STATION STYLE SHIRT

ISO 9001:2000 CERTIFIED

4.5 oz. Nomex IIIA Aramid Fiber

Shoulder straps cross-stitched symmetrically for neater appearance

Durable double stitching on yoke, top center, pockets and flaps—Collar features 1/4" top-stitching

Patch pockets and pointed flaps with Velcro closures

Top-of-flap entry with hidden pen/pencil opening on left pocket

7-button placket front with concealed snap closure

2-snap adjustable cuff closure

5 sewn in creases—2 in the front that continue through the pocket and flap, and 3 in the back

Conventional collar and band with permanent collar stays

Badge tab to be added by vendor

Logo: JPFD Suppression Patch on left sleeve

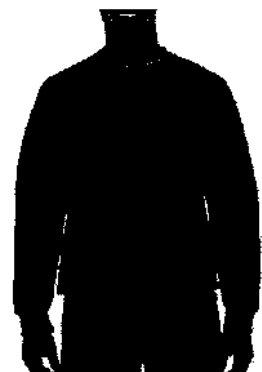
1.10. Navy Sweatshirt

Model: Gildan 12000

Color: Navy

Sizes: S-3XL

Material and Construction:



Preshrunk fleece knit

Air jet yarn = softer feel and reduced pilling

Moisture-wicking properties

Double-needle stitching at shoulder, armhole, neck, waistband and cuffs

1 x 1 rib with spandex

Quarter-turned to eliminate center crease

Logo: JPFD cross logo, heat transfer or screen, on left chest

1.11. Red Sweatshirt

Model: Gildan 12000

Color: Red

Sizes: S-3XL

Material and Construction:

Preshrunk fleece knit

Air jet yarn = softer feel and reduced pilling

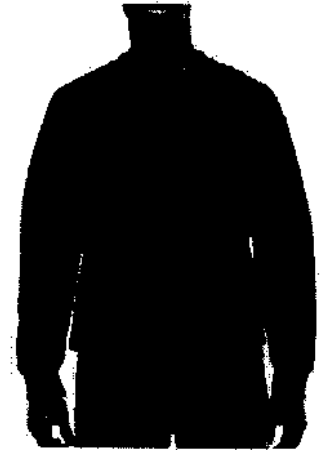
Moisture-wicking properties

Double-needle stitching at shoulder, armhole, neck, waistband and cuffs

1 x 1 rib with spandex

Quarter-turned to eliminate center crease

Logo: JPFD logo, embroidered on left chest, white letters with charcoal grey outline, 4"x1.5"



1.12. Navy Short Sleeve Cotton T-Shirt

Model: Gildan 2000

Color: Navy

Sizes: S-5XL

Material and Construction:

Preshrunk jersey knit

Seamless double-needle 7/8" collar

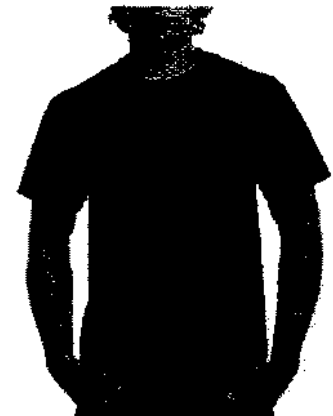
Taped neck and shoulders

Tear away label

Double-needle sleeve and bottom hems

Quarter-turned to eliminate center crease

Logo: JPFD cross logo, heat transfer or screen, on left chest; JEFFERSON PARISH FIRE logo on rear, heat transfer or screen.



1.13. Navy Long Sleeve Cotton T-Shirt

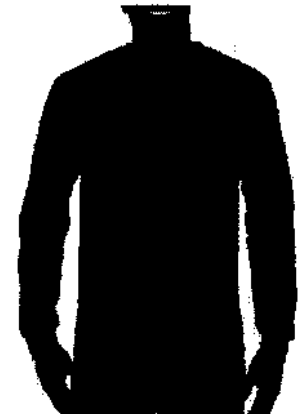
Model: Gildan 2400

Color: Navy

Sizes: S-5XL

Material and Construction:

Preshrunk jersey knit



Seamless double-needle 7/8" collar

Taped neck and shoulders

Tear away label

Rib cuffs

Double-needle bottom hem

Quarter-turned to eliminate center crease

Logo: JPFD cross logo, heat transfer or screen, on left chest; JEFFERSON PARISH FIRE logo on rear, heat transfer or screen.

1.14. Red Short Sleeve Workout Shirt

Model: Gildan 8000

Color: Red

Sizes: S-5XL

Material and Construction:

Preshrunk jersey knit

Moisture-wicking properties

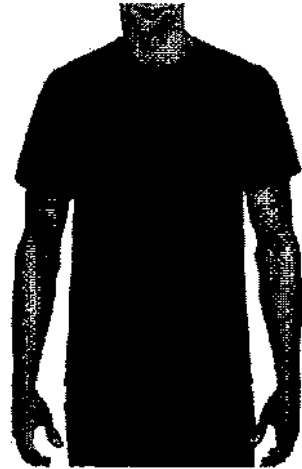
Seamless double-needle 7/8" collar

Taped neck and shoulders

Double-needle sleeve and bottom hems

Quarter-turned to eliminate center crease

Logo: JPFD logo, heat transfer or screen, on left chest. White letters with charcoal grey outline, 4"x1.5"



1.15. Red Long Sleeve Workout Shirt

Model: Gildan 8400

Color: Red

Sizes: S-3XL

Material and Construction:

Preshrunk jersey knit

Moisture-wicking properties

Seamless double-needle 7/8" collar

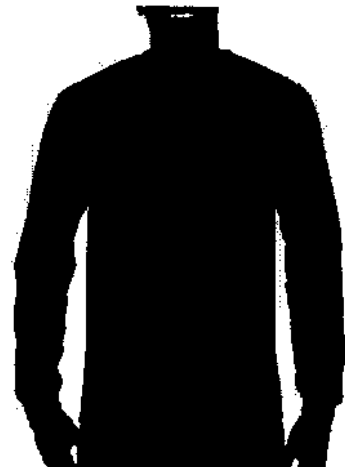
Taped neck and shoulders

Rib cuffs

Double-needle bottom hem

Quarter-turned to eliminate center crease

Logo: JPFD logo, heat transfer or screen, on left chest. White letters with charcoal grey outline, 4"x1.5"



1.16. Red Short Sleeve Dri-fit Shirt

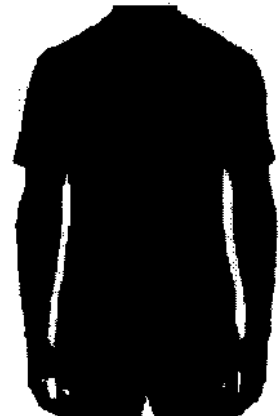
Model: Sport-Tek K468

Color: Red

Sizes: XS-4XL

Material and Construction:

3.8-ounce, 100% polyester double knit mesh



Taped neck

Tag-free label

Set-in sleeves

Side vents

Dri-Mesh double-layer construction releases heat and sweat for superior breathability that keeps you cool, dry and comfortable through any workout.

Logo: JPFD logo, heat transfer or screen, on left chest. White letters with charcoal grey outline, 4"x1.5"

1.17. Red Long Sleeve Dri-fit Shirt

Model: Sport-Tek ST350LS

Color: True Red

Sizes: XS-4XL

Material and Construction:

3.8-ounce, 100% polyester with

PosiCharge technology

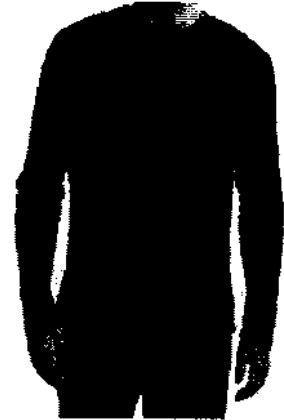
Removable tag for comfort and relabeling

Set-in sleeves

Lightweight, roomy and highly breathable, these

moisture-wicking, value-priced tees feature PosiCharge technology to lock in color and prevent logos from fading.

Logo: JPFD logo, heat transfer or screen, on left chest. White letters with charcoal grey outline, 4"x1.5"



1.18. Orange Short Sleeve Training T-Shirt

Model: Gildan 2000

Color: Orange

Sizes: S-5XL

Material and Construction:

Preshrunk jersey knit

Seamless double-needle 7/8" collar

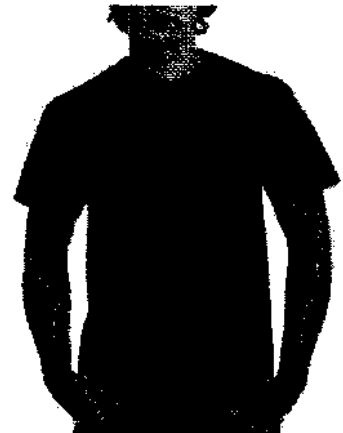
Taped neck and shoulders

Tear away label

Double-needle sleeve and bottom hems

Quarter-turned to eliminate center crease

Logo: JP Training cross logo, heat transfer or screen, on left chest. "RECRUIT" on back, heat transfer or screen, all caps, 4 inch letters, black, 5 inches from collar



1.19. Orange Long Sleeve Training T-Shirt

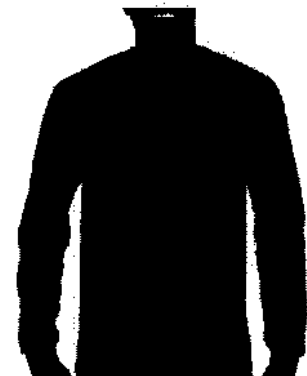
Model: Gildan 2400

Color: Orange

Sizes: S-5XL

Material and Construction:

Preshrunk jersey knit



Seamless double-needle 7/8" collar

Taped neck and shoulders

Tear away label

Rib cuffs

Double-needle bottom hem

Quarter-turned to eliminate center crease

Logo: JP Training cross logo, heat transfer or screen, on left chest. "RECRUIT" on back, heat transfer or screen, all caps, 4 inch letters, black, 5 inches from collar

2. Pants

2.1. Proper Tactical Pants

2.1.1. Men's Light Tactical Pants

Model: Proper F5252

Color: All colors available by manufacturer

Sizes: 28-56

Material and Construction:

6.4 oz 65% polyester / 35% cotton lightweight ripstop
with Teflon™ fabric protector

Fade-, shrink- and wrinkle-resistant

Teflon™ fabric protector repels stains and liquids

Action-stretch waistband

Reinforced seat and knee

Extra-large belt loops designed for nylon duty belt

YKK zipper and Prym snap

D-ring for keys and tools

Mag pocket with hook and loop closure

Two hook and loop back pockets with wallet "pocket in a pocket"

Internal openings for knee pads

Two hidden coin pockets

Relaxed fit

D-ring for keys and tools

Mag pocket with hook and loop closure

Reinforced seat and knee

2.1.2. Women's Proper Tactical Pants

Model: Proper 529550

Color: All colors available from manufacturer

Sizes: 2-24

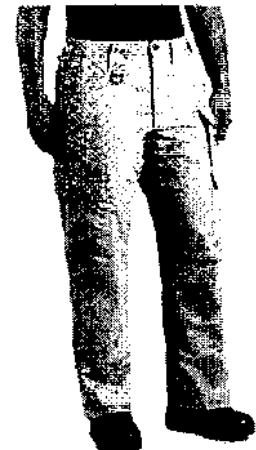
Material and Construction:

Fade-, shrink- and wrinkle-resistant

Teflon™ fabric protector finish repels stains and liquids

Extra-large belt loops designed for nylon duty belt

YKK zipper and Prym snap



Two hook and loop back pockets with wallet “pocket in a pocket”
Internal openings for knee pads
Two hidden coin pockets
Relaxed fit
D-ring for keys and tools
Action-stretch waistband
Mag pocket with hook and loop closure
Reinforced seat and knee
8.5 oz 65% polyester/35% cotton canvas with Teflon™ fabric protector

2.2. Propper Tactical Shorts

2.2.1. Propper Men’s Tactical Shorts

Model: Propper F5253

Color: All colors available by manufacturer

Sizes: 28-56

Material and Construction:

6.4 oz 65% polyester / 35% cotton lightweight ripstop
with Teflon™ fabric protector

Fade-, shrink- and wrinkle-resistant

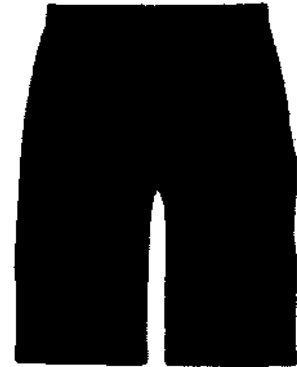
Teflon™ fabric protector finish repels liquids and resists
stains

Action-stretch waistband

Nine pocket design

9” inseam

Logo: Two-color JPDF block lettering, 1.5”x4” fill type red, outlined in white or gold
stitching determined by rank.



2.3. Navy Lion Station Pants

2.3.1. Men’s Lion Station Pants

Model: W-0150NV-10

Color: Navy

Sizes: 28-56

Material and Construction:

7.75 oz. yd2 100% cotton twill

Fade-resistant finish – up to 25 washings without fading

Traditional four-pocket design

Double hook and bar waist closure with French fly

Front and back pocket openings reinforced at all corners



Superior crotch reinforcement by connecting all four panels of trouser together at greatest point of stress

Permanent silicone creases

NFPA 1975 compliant

2.3.2. Women's Lion Station Pants

Model: Lion 7121-10

Color: Navy

Sizes: 2-30

Material and Construction:

7.75 oz. 65% polyester/35% cotton twill

Stain release finish

1/8 top pockets with Lion LongWear™ pocketing

Two welt-style hip pockets, button closure on left

Steel hook and bar waist closure

Heavy ratcheting brass zipper

No-roll waistband with shirt grip keeps shirt tucked in



2.4. Navy Daily Wear Uniform Pants

2.4.1. Men's Daily Wear Uniform Pants

Model: Flying Cross TR070

Color: Navy

Sizes: 28-60

Material and Construction:

Crushproof hook and eye with fully functional French Fly

Interlined belt loops

Features Freedom Fit waistband with 2-zone stretch and

Tru-Grip rubberized strips to help keep shirts tucked in

Fly is top stitched to provide a pucker-free clean finish

Inseams and outseams are neatly serged and pressed for a

smooth finish with pucker-free seams

Firm bar tacking at all stress points for longer life of the

garment



2.4.2. Women's Daily Wear Uniform Pants

Model: Flying Cross TR070WT

Color: Navy

Sizes: 2-26

Material and Construction:

Features Freedom Fit waistband with 2-zone stretch and

Tru-Grip rubberized strips to help keep shirts tucked in

Crushproof hook and eye with fully functional French Fly

Interlined belt loops

Fly is top stitched to provide a pucker-free clean finish



Inseams and outseams are neatly serged and pressed for a smooth finish with pucker-free seams
Firm bar tacking at all stress points for longer life of the garment

2.5. Navy Dress Uniform Pants

Model: Flying Cross 38200. NO SUBSTITUTIONS OR EQUIVALENCIES WILL BE ALLOWED FOR THIS ITEM. MUST BE THIS EXACT ITEM TO MATCH UNIFORM DRESS COAT

Color: LAPD Navy

Sizes: SHORT RISE: 28 - 40 (EVEN ONLY)

REGULAR RISE: 28 - 60 (EVEN ONLY OVER 38)

LONG RISE: 32 - 42 (EVEN ONLY)

Material and Construction:

100% Polyester, 11-11 ½ oz. per linear yard

The trouser styling shall be T-1: plain front, two (2) quarter top front pockets, and two (2) hip pockets professionally finished with no visible topstitching.

The waistband closure shall be accomplished with a single crush proof hook and eye centered on the waistband for wearer comfort. The hook and eye shall be reinforced with 7/8-inch non-woven stay tape that is anchored with topstitching through and through to the top of the waistband (bartacks in place of topstitching shall be cause for rejection).



2.6. Men's NOMEX Station Pants

Model: Flying Cross 98200

Color: Navy

Sizes: 28-54

Material and Construction:

ISO 9001: 2008 Certified

6.5 oz, Nomex® IIIA Aramid fiber (93% Aramid, 5% DuPont™ KEVLAR® fiber, 2% anti-static fibers) with Twill weave

Soil-release fabric

Quarter top pockets

Left hip pocket with security tab

Lintrak creases for neater appearance



¾" wide belt loops

Reinforced Stitching on pockets and waistband

Outseam, Inseam and seat feature a triple needle stitching for longer life of garment

Machine wash and dry

2.7. Women's NOMEX Station Pants

Model: Flying Cross 98250

Color: Navy

Sizes: 4-28

Material and Construction:

6.5 oz Nomex® IIIA Aramid fiber (93% Aramid, 5% Kevlar®, 2% anti-static fibers)

Soil-release fabric

Lintrak creases for neater appearance

ISO 9001: 2000 Certified

Quarter-top pockets

Left hip pocket with security tab

Fashion Fit® for a true women's fit

Machine wash and dry

2.8. Men's NOMEX Cargo Pants

Model: Flying Cross V98300

Color: Navy

Sizes: 28-56

Material and Construction:

93% aramid fiber/5% Kevlar/2% antistatic fiber twill

ISO 9001: 2008 Certified

Inset cargo pockets with hidden cell/mag pocket

Quarter top pockets

Tab left hip pocket

Utility notch pocket

Articulated knees

Gusseted crotch

Stretch waistband

¾" wide belt loops for belts up to 1¾" wide

Reinforced stitching throughout with added triple needle stitching to inseams, outseams and seat seam



2.9. Women's NOMEX Cargo Pants

Model: Flying Cross V98300W

Color: Navy

Sizes: 2-26

Material and Construction:

93% aramid fiber/5% Kevlar/2% antistatic fiber twill

ISO 9001: 2008 Certified

Inset cargo pockets with hidden cell/mag pocket
Quarter top pockets
Tab left hip pocket
Utility notch pocket
Articulated knees
Gusseted crotch
Stretch waistband
¾" wide belt loops for belts up to 1½" wide
Reinforced stitching throughout with added triple needle stitching to inseams, outseams and seat seam

2.10. Grey Workout Shorts

Model: Sport-Tek ST312

Color: Silver

Sizes: XS-4XL

Material and Construction:

5.3-ounce, 100% polyester flat back mesh with PosiCharge technology

Elastic waistband with continuous loop drawcord

Side pockets and back hip pocket with dyed-to-match button

9-inch inseam

Logo: JPFD logo, heat transfer or screen, on left leg. White letters with red outline, 4"x1.5"



2.11. Navy Sweatpants

Model: Gildan 18300

Color: Navy

Sizes: S-5XL

Material and Construction:

8 oz. Poly/Cotton blend

Differential rise for better fit

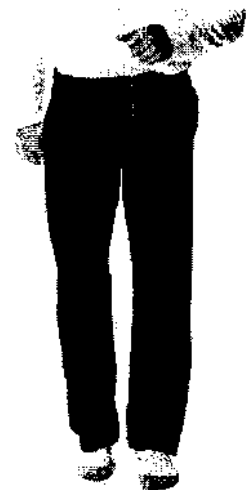
Slightly tapered leg with open bottom

Jersey lined side seam pockets

Covered elastic waistband with drawcord

Softer feel and reduced pilling

Logo: JPFD cross logo, heat transfer or screen, on left leg



2.12. Grey Sweatpants

Model: Gildan 18300

Color: Dark Heather

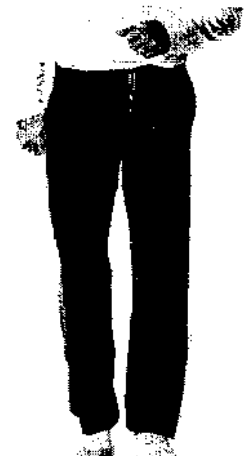
Sizes: S-5XL

Material and Construction:

8 oz. Poly/Cotton blend

Differential rise for better fit

Slightly tapered leg with open bottom



Jersey lined side seam pockets

Covered elastic waistband with drawcord

Softer feel and reduced pilling

Logo: JPFD logo embroidered on left leg. White letters with red outline, 4"x1.5"

2.13. Grey Windpants

2.13.1. Men's Grey Windpants

Model: Sport-Tek PST74

Color: Graphite Grey

Sizes: XS-4XL

Material and Construction:

100% polyester

100% polyester mesh lining above knees, poly lining below for easy on/off

Elastic waistband with drawcord

Side pockets

Back pocket with hook and loop closure

Extended leg zippers

Logo: JPFD logo embroidered on left leg. White letters with red outline, 4"x1.5"



3. Outerwear

3.1. Thriller 5-in-1 Jacket

Model: Gerber 71DX1/L

Color: Navy

Sizes: XS-6XL, including long sizes

Material and Construction:

Meets ANSI 107 Class III certification

50% nylon, 50% polyester

Zip out liner can be worn alone

Includes the Warrior Softshell liner that can be zipped in or worn separately

Reverses to a duty jacket



Drop-in 3 panel hood with storm closure

Hand warmer pockets, box pleat pockets with scalloped flaps, triple bellowed inset cargo pockets

Logo: Outer Shell: Navy side – JPDFD Department Patch on left sleeve, 3.5" x 2.25" reversed American flag on right sleeve; Lime side – JPDFD imprint on left chest 3" above the top reflective stripe, silver with black trim, 4.75" x 1.5", JPDFD imprint on back 4.5" above the top reflective stripe, centered, silver with black trim, 12" x 4"



Inner Shell: (a) JPDFD cross logo embroidered on left chest, 3.5" x 3.5", name and rank on right chest (1st line: First initial, last name; 2nd line: Rank). Embroidery shall be 3/8" tall, block font, all caps. Color shall be white or gold, to be determined by rank. Or (b) JP Fire Services logo embroidered on left chest, 3.5" x 3.5", reversed U.S. flag on right sleeve, 2" x 1"

3.2. Navy Soft Shell Jacket/Liner

Model: Gerber 5151 Warrior Jacket

Color: Navy

Sizes: XS-6XL

Material and Construction:

Dual zippered pockets warm hands

Hidden inner zipper pockets conceal gear

Side zippers offer storage for cell phone and keys

Shoulder mic strips

Waist length

Stretch draw cord waistband with adjustable barrel clips keeps heat in for added protection from cold temperatures

Logo: (a) JPDFD cross logo embroidered on left chest, 3.5" x 3.5", name and rank on right chest (1st line: First initial, last name; 2nd line: Rank). Embroidery shall be 3/8" tall, block font, all caps. Color shall be white or gold, to be determined by rank. Or (b) JP Fire Services logo embroidered on left chest, 3.5" x 3.5", reversed U.S. flag on right sleeve, 2" x 1"



3.3. Navy Job Shirt

Model: Premier Don-Rite JSV

Color: Dark Navy

Sizes: S-4XL

Material and Construction:

80% cotton/20% polyester fleece knit, 9.3 oz/yd2.

Easy care, machine wash and dry.

Fleece fabric provides lightweight warmth and breathability for optimum comfort.



¼ zip opening makes donning and doffing easy.

Zip-through collar keeps wind out.

Convenient handwarmer pockets.

Chest pocket with hook and loop closure and opening for pen(cil).

100% cotton ripstop reinforced elbows for extended wear life.

Dee ring for key attachment.

Side Zip Access for radio, gun etc.

Logo: (a) JPFDP cross logo embroidered on left chest, 3.5" x 3.5", name and rank on right chest (1st line: First initial, last name; 2nd line: Rank). Embroidery shall be 3/8" tall, block font, all caps. Color shall be white or gold, to be determined by rank. Or (b) JP Fire Services logo embroidered on left chest, 3.5" x 3.5", reversed U.S. flag on right sleeve, 2" x 1"

3.4. Full Zip Tech Sweater

Model: Propper F5437

Color: Navy

Sizes: XS-5XL, M-3XL long

Material and Construction:

9 oz 100% polyester sweater fleece

Vislon® full zip

Anti-pill sweater fleece with anti-abrasion yoke and under sleeves

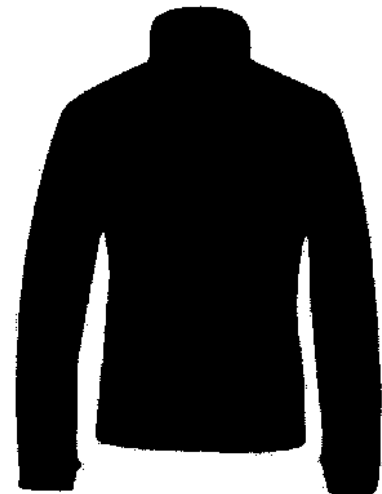
Stand collar with anti-abrasion lining

Zippered document and hand pockets

Side seam duty belt access

CCW pass-through in hand pockets

Logo: (a) JPFDP cross logo embroidered on left chest, 3.5" x 3.5", name and rank on right chest (1st line: First initial, last name; 2nd line: Rank). Embroidery shall be 3/8" tall, block font, all caps. Color shall be white or gold, to be determined by rank. Or (b) JP Fire Services logo embroidered on left chest, 3.5" x 3.5", reversed U.S. flag on right sleeve, 2" x 1"



3.5. Navy Flannel-Lined Work Jacket

Model: Cornerstone CSJ40

Color: Navy

Sizes: XS-6XL

Material and Construction:

12-ounce, 100% cotton enzyme washed duck cloth

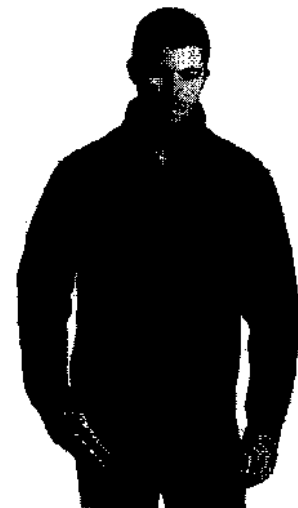
100% acrylic flannel body lining

3-ounce polyfill quilted polyester sleeve lining

Adjustable snap cuffs

Front slash pockets with hidden snap closures

Interior pockets with snap closures



Adjustable button waist tabs

Port Pocket™ for easy embroidery access

Logo: (a) JPDFD cross logo embroidered on left chest, 3.5" x 3.5", name and rank on right chest (1st line: First initial, last name; 2nd line: Rank). Embroidery shall be 3/8" tall, block font, all caps. Color shall be white or gold, to be determined by rank. Or (b) JP Fire Services logo embroidered on left chest, 3.5" x 3.5", reversed U.S. flag on right sleeve, 2" x 1"

3.6. The Bravest quilted jacket

Model: Game Sportswear 1221-J

Color: Navy

Sizes: S-5XL, Tall Sizes: L-3XL

Material and Construction:

Wind resistant nylon Tafetta shell

5oz. poly-fill lining with thermal knit backing

100% polyester rib knit collar, cuff and bottom band

Full front zipper

2 outer pockets

Machine washable



Logo: (a) JPDFD cross logo embroidered on left chest, 3.5" x 3.5", name and rank on right chest (1st line: First initial, last name; 2nd line: Rank). Embroidery shall be 3/8" tall, block font, all caps. Color shall be white or gold, to be determined by rank. Or (b) JP Fire Services logo embroidered on left chest, 3.5" x 3.5", reversed U.S. flag on right sleeve, 2" x 1"

3.7. Cardigan Sweater

Model: Combex 4018

Color: All colors available by manufacturer

Sizes: XS-5XL

Material and Construction:

100% Durapil™ ULTRA Acrylic

Hemmed waistband

Ribbed cuffs

Two functional lower pockets

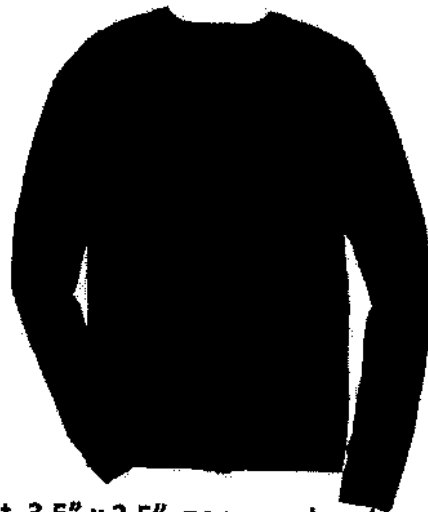
Jersey knit

Superior pill resistance

Soft hand-feel

Will not shrink or fade

Logo: (a) JPDFD cross logo embroidered on left chest, 3.5" x 3.5", name and rank on right chest (1st line: First initial, last name; 2nd line: Rank) or one line "HEADQUARTERS". Embroidery shall be 3/8" tall, block font, all caps. Color shall be



white or gold, to be determined by rank. Or (b) JP Fire Services logo embroidered on left chest, 3.5" x 3.5", reversed U.S. flag on right sleeve, 2" x 1"

3.8. Uniform Dress Coat

3.8.1. Men's Uniform Dress Coat

Model: Flying Cross 38804 NO SUBSTITUTIONS OR EQUIVALENCIES WILL BE ALLOWED FOR THIS ITEM. MUST BE THIS EXACT ITEM TO MATCH UNIFORM DRESS PANTS

Color: LAPD Navy

Sizes: Short – 36-50; Regular – 32-60; Long – 36-56

Material and Construction:

11-11½ oz. 100% VISA® System 3™ Polyester, Serge Fully Lined

6-button front with peak lapels

FD buttons

Shoulder pads and coat front tailoring to enhance the shape of the coat

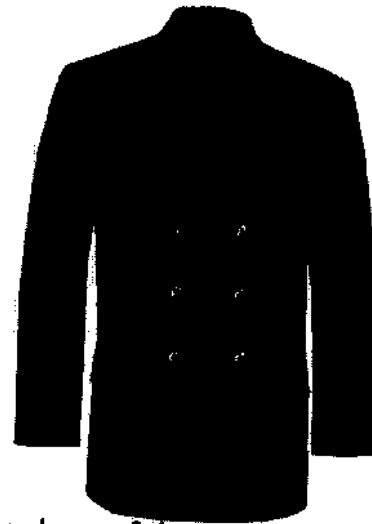
Two lower simulated pockets with plain flaps

Inside breast pocket

Badge tab

Shoulder straps

Logo: JPDFD Department patch on left sleeve. Gold or silver buttons to be determined by rank. Stripes (quantity and color to be determined by rank) applied to both sleeves. Maltese Cross(es) (color to be determined by rank, quantity to be determined by years of service) applied to left sleeve.



4. Belts

4.1. Tactical Duty Belt

Model: Propper F5603

Color: all colors available by manufacturer

Sizes: 28-58

Material and Construction:

Heavy-duty 1.5-inch-wide nylon

Security friendly, non-metal buckle

1.5" single layer nylon webbing



4.2. Black Leather Velcro Belt

Model: Dutyman 5111

Color: Black

Sizes: XS-4XL

Material and Construction:

1-1/2" wide with velcro closure

8-9 oz. leather



4.3. Black Leather Uniform Dress Belt with metal Buckle

Model: Dutyman 1611

Color: Black

Sizes: 26-60

Material and Construction:

Plain 1.75" garrison belt made of full grain leather
8-9oz.

Solid brass buckle with a nickel or brass finish (color determined by rank)

Postal approved

Stamped with the following number: PE2-2927



5. Hats

5.1. Beanie Caps

5.1.1. Navy Beanie Cap without Cuff

Model: Flexfit 1500KC

Color: Navy

Sizes: One size fits all

Material and Construction:

100% Hypoallergenic Acrylic

Super dense knit for easy embroidery

Hand washable

Approx. 8.5"

Logo: Two-color JPFD block lettering, 1.75"x4.5" fill type red, outlined in white or gold stitching determined by rank



5.1.2. Navy Beanie Cap with Cuff

Model: Flexfit 1501KC

Color: Navy

Sizes: One size fits all

Material and Construction:

100% Hypoallergenic Acrylic

Super dense knit for easy embroidery

Hand washable

Approx. 12"

Logo: Two-color JPFD block lettering, 1.75"x4.5" fill type red, outlined in white or gold stitching determined by rank



5.2. Baseball Caps

5.2.1. Navy Summer Mesh Baseball Cap

Model: Flexfit 6777

Color: Dark Navy, Whitw

Sizes: One size fits all

Material and Construction:

97% Polyester / 3% Spandex



Athletic look & feel

Polyester mesh throughout crown

Hard buckram

Silver undervisor

Lightweight

Logo: Two-line embroidery on front of cap. First line: Two-color JPDF block lettering, 1.75"x4.5" fill type red, outlined in white or gold stitching determined by rank. Second line: Rank embroidered in block letters, all caps, in color to match outline color from line one.

"Scrambled eggs" applied to top of visor for chief officers.

5.2.2. Navy Winter Wool Baseball Cap

Model: Flexfit 6477

Color: Dark Navy, White

Sizes: S/M, L/XL

Material and Construction:

83% Acrylic / 15% Wool / 2% Spandex

Athletic Shape

Hard buckram

Silver undervisor

Premium wool blend

8 rows of stitching on visor

Logo: Two-line embroidery on front of cap. First line: Two-color JPDF block lettering, 1.75"x4.5" fill type red, outlined in white or gold stitching determined by rank.

Second line: Rank embroidered in block letters, all caps, in color to match outline color from line one.

"Scrambled eggs" applied to top of visor for chief officers.



5.3. Uniform Dress Hats

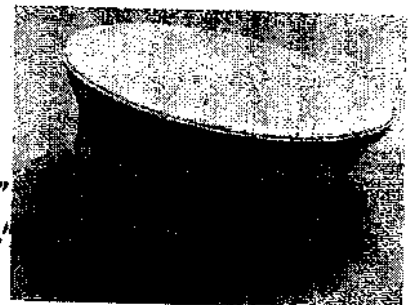
5.3.1. Chief Officers Uniform Dress Hat

STYLE: Midway Cap Company DELUXE BELL

CROWN STYLE CAP.

DIMENSIONS: THE DIMENSIONS OF A SIZE 7-1/8 CAP SHALL BE AS FOLLOWS: FRONT TO REAR OF A CROWN 9" SIDE OF CROWN 8-1/2"; HEIGHT OF CAP IN FORNT 1-3/4" ALL OTHER SIZES SHALL BE IN PROPORTION.

COVERS: THE MATERIAL SHALL BE WHITE CLOTH. THE COVERS SHALL HAVE A FULL CROWN LINING OF BLACK 100% ACETATE-TAFFETA. CENTERED ON THE LINING SHALL BE A DIAMOND SHAPED ACETATE PLASTIC COMBINATION SWEAT PROTECTOR AND IDENTIFICATION CARD HOLDER. THE ACETATE SHALL BE .007 GAUGE AND MEASURE APPROXIMATELY 5-1/2" X 4". BETWEEN THE CROWN AND THE WELT SHALL BE OF WHITE CLOTH. THIS WELTING SHALL COMPLETELY COVER A 1/16" GALVANIZED STEEL WIRE THAT HAS BEEN ACCURATELY MEASURED AND CLOSED TO THE



INDIVIDUAL CAP SIZE. THE SIDES MADE OF WHITE CLOTH MATERIAL THE FRONT AND THE SIDES ALL BE SUPPORTED BY A SINGLE PLY OF GENUINE HAIRCLTH, CUT TO INDIVIDUAL SIZE AND SEWN INTO THE CAP.

EYELETS: EACH CAP SHALL BE PROVIDED WITH A TOTAL OF 5 METAL EYELETS: 1 EYELET SHALL BE ATTACHED IN THE FRONT, CENTERED FOR PROPER PLACEMENT OF A SINGLE POST BADGE; 2 EYELETS WILL BE PROVIDED ON EACH SIDE FOR VENTILATION.

FRAME BAND: THE INNERBAND SHALL BE 2-1/4" WIDE OF AN EXTRUDED HIGH DENSITY BLACK LINEAR POLYETHYLENE MATERIAL, APPROXIMATELY .040 THICK. THIS BAND SHALL BE FORMES INTO AN ENDLESS CIRCLE BY CUTTING EACH END WITH A DOVETAIL PATTERN AND HEAT-WELDING FOR PERNMAMENT STRENGTH AND CLOSURE. THERE SHALL BE NO OVERLAPPING OF THE BAND AND CLOSING BY STAPLES, RIVETS OR SEWING WILL NOT BE ACCEPTABLE.

VISOR: THE VISOR SHALL BE SHAPE AN ARMY BULLION SET INTO THE FRAME AT AN ANGLE OF 45°. ALL VISORS SHALL BE BLOCKED TO SHAPE IN HEATED FORMS.

SWEATBAND: THE SWEATBAND SHALL BE MICROFIBER SUADE SWEATBAND SHALL BE SEWN INTO CAPS WITH MACHINE FINISH

FRONT STRAP: THE FRONT STRAP SHALL BE GOLD METAL FLORAL. THE STRAP SHALL BE HELD AT EITHER END WITH A REGULATION FIRE DEPARTMENT "FD" GOLD FINISH BUTTON.

ALL CAPS SHALL CONTAIN A SIZE LABEL AND A UNION LABEL, AND ALL WORKMANSHIP SHALL BE FIRST CLASS IN ALL RESPECTS.

5.3.2. Captains Uniform Dress Hat

STYLE: SHALL BE DELUXE BELL CROWN STYLE CAP.

DIMENSIONS: THE DIMENSIONS OF A SIZE 7-1/8 CAP SHALL BE AS FOLLOWS: FRONT TO REAR OF A CROWN 9"; SIDE OF CROWN 8-1/2"; HEIGHT OF CAP IN FORNT 1-3/4" ALL OTHER SIZES SHALL BE IN PROPORTION.

COVERS: THE MATERIAL SHALL BE WHITE CLOTH. THE COVERS SHALL HAVE A FULL CROWN LINING OF BLACK 100% ACETATE-TAFFETA. CENTERED ON THE LINING SHALL BE A DIAMOND SHAPED ACETATE PLASTIC COMBINATION SWEAT PROTECTOR AND IDENTIFICATION CARD HOLDER. THE ACETATE SHALL BE .007 GAUGE AND MEASURE APPROXIMATELY 5-1/2" X 4". BETWEEN THE CROWN AND THE WELT SHALL BE OF WHITE CLOTH. THIS WELTING SHALL COMPLETELY COVER A 1/16" GALVANIZED STEEL WIRE THAT HAS BEEN ACCURATELY MEASURED AND CLOSED TO THE INDIVISUAL CAP SIZE. THE SIDES MADE OF WHITE CLOTH MATERIAL THE FRONT AND THE SIDES ALL BE SUPPORTED BY A SINGLE PLY OF GENUINE HAIRCLTH, CUT TO INDIVIDUAL SIZE AND SEWN INTO THE CAP. THE FRAME SHALL BE COVERED WITH A REMOVABLE NAVY RAYON BRAID.

EYELETS: EACH CAP SHALL BE PROVIDED WITH A TOTAL OF 5 METAL EYELETS: 1 EYELET SHALL BE ATTACHED IN THE FRONT, CENTERED FOR PROPER PLACEMENT OF A SINGLE POST BADGE; 2 EYELETS WILL BE PROVIDED ON EACH SIDE FOR VENTILATION.



FRAME BAND: THE INNER BAND SHALL BE 2-1/4" WIDE OF AN EXTRUDED HIGH DENSITY BLACK LINEAR POLYETHYLENE MATERIAL, APPROXIMATELY .040 THICK. THIS BAND SHALL BE FORMED INTO AN ENDLESS CIRCLE BY CUTTING EACH END WITH A DOVETAIL PATTERN AND HEAT-WELDING FOR PERMANENT STRENGTH AND CLOSURE. THERE SHALL BE NO OVERLAPPING OF THE BAND AND CLOSING BY STAPLES, RIVETS OR SEWING WILL NOT BE ACCEPTABLE.

VISOR: THE VISOR SHALL BE SHAPE 611 SET INTO THE FRAME AT AN ANGLE OF 45°. ALL VISORS SHALL BE BLOCKED TO SHAPE IN HEATED FORMS.

SWEATBAND: THE SWEATBAND SHALL BE MICROFIBER SUADE SWEATBAND SHALL BE SEWN INTO CAPS WITH MACHINE FINISH

FRONT STRAP: THE FRONT STRAP SHALL BE GOLD METAL FLORAL; THE STRAP SHALL BE HELD AT EITHER END WITH A REGULATION FIRE DEPARTMENT "FD" GOLD FINISH BUTTON.

ALL CAPS SHALL CONTAIN A SIZE LABEL AND A UNION LABEL, AND ALL WORKMANSHIP SHALL BE FIRST CLASS IN ALL RESPECTS.

5.3.3. Lieutenants Uniform Dress Hat

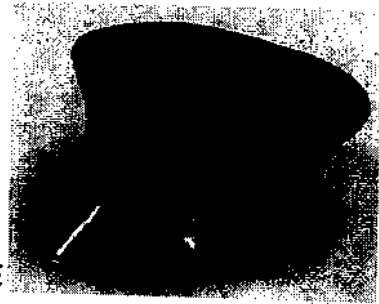
STYLE: SHALL BE DELUXE BELL CROWN STYLE CAP.

DIMENSIONS: THE DIMENSIONS OF A SIZE 7-1/8 CAP SHALL BE AS FOLLOWS: FRONT TO REAR OF A CROWN 9"; SIDE OF CROWN 8-1/2"; HEIGHT OF CAP IN FRONT 1-3/4". ALL OTHER SIZES SHALL BE IN PROPORTION.

COVERS: THE MATERIAL SHALL BE NAVY GABARDINE. THE COVERS SHALL HAVE A FULL CROWN LINING OF BLACK 100% ACETATE-TAFFETA. CENTERED ON THE LINING SHALL BE A DIAMOND SHAPED ACETATE PLASTIC COMBINATION SWEAT PROTECTOR AND IDENTIFICATION CARD HOLDER. THE ACETATE SHALL BE .007 GAUGE AND MEASURE APPROXIMATELY 5-1/2" X 4". BETWEEN THE CROWN AND THE WELT SHALL BE OF WHITE VINYL. THIS WELTING SHALL COMPLETELY COVER A 1/16" GALVANIZED STEEL WIRE THAT HAS BEEN ACCURATELY MEASURED AND CLOSED TO THE INDIVIDUAL CAP SIZE. THE SIDES MADE OF NAVY MATERIAL THE FRONT AND THE SIDES ALL BE SUPPORTED BY A SINGLE PLY OF GENUINE HAIRCLTH, CUT TO INDIVIDUAL SIZE AND SEWN INTO THE CAP.

EYELETS: EACH CAP SHALL BE PROVIDED WITH A TOTAL OF 5 METAL EYELETS: 1 EYELET SHALL BE ATTACHED IN THE FRONT, CENTERED FOR PROPER PLACEMENT OF A SINGLE POST BADGE; 2 EYELETS WILL BE PROVIDED ON EACH SIDE FOR VENTILATION.

FRAME BAND: THE INNER BAND SHALL BE 2-1/4" WIDE OF AN EXTRUDED HIGH DENSITY BLACK LINEAR POLYETHYLENE MATERIAL, APPROXIMATELY .040 THICK. THIS BAND SHALL BE FORMED INTO AN ENDLESS CIRCLE BY CUTTING EACH END WITH A DOVETAIL PATTERN AND HEAT-WELDING FOR PERMANENT STRENGTH AND



CLOSURE. THERE SHALL BE NO OVERLAPPING OF THE BAND AND CLOSING BY STAPLES, RIVETS OR SEWING WILL NOT BE ACCEPTABLE.

VISOR: THE VISOR SHALL BE SHAPE 611 SET INTO THE FRAME AT AN ANGLE OF 45°. ALL VISORS SHALL BE BLOCKED TO SHAPE IN HEATED FORMS.

SWEATBAND: THE SWEATBAND SHALL BE MICROFIBER SUADE SWEATBAND SHALL BE SEWN INTO CAPS WITH MACHINE FINISH

FRONT STRAP: THE FRONT STRAP SHALL BE SILVER METAL FLORAL. THE STRAP SHALL BE HELD AT EITHER END WITH A REGULATION FIRE DEPARTMENT "FD" NICKEL FINISH BUTTON.

ALL CAPS SHALL CONTAIN A SIZE LABEL AND A UNION LABEL, AND ALL WORKMANSHIP SHALL BE FIRST CLASS IN ALL RESPECTS.

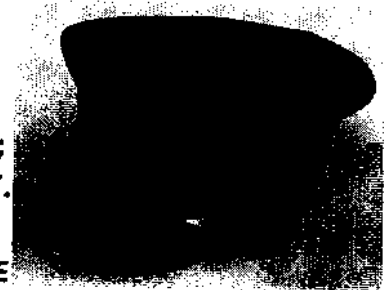
5.3.4. Firefighter/Operator Uniform Dress Hat

STYLE: SHALL BE DELUXE BELL CROWN STYLE CAP.

DIMENSIONS: THE DIMENSIONS OF A SIZE 7-1/8 CAP SHALL BE AS FOLLOWS: FRONT TO REAR OF A CROWN 9"; SIDE OF CROWN 8-1/2"; HEIGHT OF CAP IN FORNT 1-3/4". ALL OTHER SIZES SHALL BE IN PROPORTION.

COVERS: THE MATERIAL SHALL BE NAVY GABARDINE. THE COVERS SHALL HAVE A FULL CROWN LINING OF BLACK 100% ACETATE-TAFFETA. CENTERED ON THE LINING SHALL BE A DIAMOND SHAPED ACETATE PLASTIC COMBINATION SWEAT PROTECTOR AND IDENTIFICATION CARD HOLDER. THE ACETATE SHALL BE .007 GAUGE AND MEASURE APPROXIMATELY 5-1/2" X 4". BETWEEN THE CROWN AND THE WELT SHALL BE OF WHITE VINYL. THIS WELTING SHALL COMPLETELY COVER A 1/16" GALVANIZED STEEL WIRE THAT HAS BEEN ACCURATELY MEASURED AND CLOSED TO THE INDIVISUAL CAP SIZE. THE SIDES MADE OF NAVY MATERIAL THE FRONT AND THE SIDES ALL BE SUPPORTED BY A SINGLE PLY OF GENUINE HAIRCLTH, CUT TO INDIVIDUAL SIZE AND SEWN INTO THE CAP.

EYELETS: EACH CAP SHALL BE PROVIDED WITH A TOTAL OF 5 METAL EYELETS: 1 EYELET SHALL BE ATTACHED IN THE FRONT, CENTERED FOR PROPER PLACEMENT OF A SINGLE POST BADGE; 2 EYELETS WILL BE PROVIDED ON EACH SIDE FOR VENTILATION. FRAME BAND: THE INNER BAND SHALL BE 2-1/4" WIDE OF AN EXTRUDED HIGH DENSITY BLACK LINEAR POLYETHYLENE MATERIAL, APPROXIMATELY .040 THICK. THIS BAND SHALL BE FORMES INTO AN ENDLESS CIRCLE BY CUTTING EACH END WITH A DOVETAIL PATTERN AND HEAT-WELDING FOR PERNMANENT STRENGTH AND



CLOSURE. THERE SHALL BE NO OVERLAPPING OF THE BAND AND CLOSING BY STAPLES, RIVETS OR SEWING WILL NOT BE ACCEPTABLE.

VISOR: THE VISOR SHALL BE SHAPE 611 SET INTO THE FRAME AT AN ANGLE OF 45°. ALL VISORS SHALL BE BLOCKED TO SHAPE IN HEATED FORMS.

SWEATBAND: THE SWEATBAND SHALL BE MICROFIBER SUADE SWEATBAND SHALL BE SEWN INTO CAPS WITH MACHINE FINISH

FRONT STRAP: THE FRONT STRAP SHALL BE ½ BLACK PLASTIC, THE STRAP SHALL BE HELD AT EITHER END WITH A REGULATION FIRE DEPARTMENT BUTTON "FD" IN A GILT NICKEL FINISH.

ALL CAPS SHALL CONTAIN A SIZE LABEL AND A UNION LABEL, AND ALL WORKMANSHIP SHALL BE FIRST CLASS IN ALL RESPECTS.

6. Ties

6.1. Dark Navy Clip-On Uniform Dress Tie

Style: Color 61-Dark NAVY

Fiber Content: 100% polyester

Weave: Tropical

Weight: 9 1/2 -10 oz/ linear yard

Construction: 59 warp x 51 filling (2-ply yarns) Tensile

Strength: 85 x 60 lbs.

Finish: Crease Resistant

6.1.1. Short Clip-On Tie

Size: 3.0" X 14.5"

Construction: Pre-tied on a bend over clip with black clasp Width at widest point 3".

Finished length from top of knot to tip of tie 14.5". Each tie shall have a label on back to accommodate small end three buttonholes in tail to match buttons on shirt

6.1.2. Regular Clip-On Tie

Size: 3.0" X 18.0"

Construction: Pre-tied on a bend over clip with black clasp Width at widest point 3".

Finished length from top of knot to tip of tie 18.0". Each tie shall have a label on back to accommodate small end three buttonholes in tail to match buttons on shirt

6.1.3. Long Clip-On Tie

Size: 3.0" X 20.0"

Construction: Pre-tied on a bend over clip with black clasp Width at widest point 3".

Finished length from top of knot to tip of tie 20.0". Each tie shall have a label on back to accommodate small end three buttonholes in tail to match buttons on shirt

6.1.4. Extra Long Clip-On Tie

Size: 3.0" X 22.0"

Construction: Pre-tied on a bend over clip with black clasp Width at widest point 3".

Finished length from top of knot to tip of tie 22.0". Each tie shall have a label on back to accommodate small end three buttonholes in tail to match buttons on shirt

7. Shoes

7.1. Men's 8-inch Side Zip Boot

Model: Reebok Rapid Response RB8874

Color: Black

Sizes: 3M-15M, 3.5W-15W (including all half sizes)

Material and Construction:

Type: Stealth 8" Boot with Side Zipper

Toe: Composite Toe

Upper: Smooth Leather and Ballistic Nylon

Lining: Nylon Mesh

Insole: Removable F2A Polyurethane Cushion Insert with Shock Eliminator Heel Cushion

Outsole: Dual Density; Mountain Trail Rubber Bottom and EVA Cushion Midsole

Special Feature: Extra Wide Toe, YKK Side Zipper



7.2. Women's 8-Inch Side Zip Boot

Model: Reebok Rapid Response RB874

Color: Black

Sizes: 5M-11M, 5.5W-11W (including all half sizes)

Material and Construction:

Type: Stealth 8" Boot with Side Zipper

Toe: Composite Toe

Upper: Smooth Leather and Ballistic Nylon

Lining: Nylon Mesh

Insole: Removable F2A Polyurethane Cushion Insert with Shock Eliminator Heel Cushion

Outsole: Dual Density; Mountain Trail Rubber Bottom and EVA Cushion Midsole

Special Feature: Extra Wide Toe, YKK Side Zipper



7.3. Men's 6-inch Side Zip Boot

Model: Reebok Rapid Response RB8674

Color: Black

Sizes: 4M-15M, 5W-13W (including all half sizes)

Material and Construction:

Type: Stealth 6" Boot with Side Zipper

Toe: Composite Toe

Upper: Smooth Leather and Ballistic Nylon

Lining: Nylon Mesh

Insole: Removable F2A Polyurethane Cushion Insert with Shock Eliminator Heel Cushion



Outsole: Dual Density; Mountain Trail Rubber Bottom and EVA Cushion Midsole
Special Feature: Extra Wide Toe, YKK Side Zipper

7.4. Women's 6-inch Side Zip Boot

Model: Reebok Rapid Response RB864

Color: Black

Sizes: 6M-12M, 7W-12W (including all half sizes)

Material and Construction:

Type: Stealth 6" Boot with Side Zipper

Toe: Composite Toe

Upper: Smooth Leather and Ballistic Nylon

Lining: Nylon Mesh

Insole: Removable F2A Polyurethane Cushion Insert with Shock Eliminator Heel Cushion

Outsole: Dual Density; Mountain Trail Rubber Bottom and EVA Cushion Midsole

Special Feature: Extra Wide Toe, YKK Side Zipper



7.5. Men's 6-inch Slip-on Boot

Model: Bates E07004

Color: Black

Sizes: 7M-15M, 7W-13W (including all half sizes)

Material and Construction:

Easy to Clean Durable Leather

ASTM F2413-11 Rated Composite Toe for Safety and Protection

Electrical Hazard Protection

Molded Heel and Toe Bumpers for Added Reinforcement

Bates Anti-Fatigue Endurance Performance System

Multi Terrain Slip Resistant Rubber Lug Outsole with Molded Arch Support



7.6. Men's Pull-on Oxford

Model: Thorogood 834-6520

Color: Black

Sizes: 4M-15M, 6W-15W (including all half sizes)

Material and Construction:

Full-grain leather/nylon

Cement construction

Removable SHOCK ZONE polyurethane footbed

Composite shank

Slip-resistant ASR outsole

Non-metallic upper

ASTM F1677-05

ASTM F2913-11



7.7. Duty Oxford

Model: Bates 22233

Color: Black

Sizes: 4M-17M, 7W-15W (including all half sizes)

Material and Construction:

High Shine Leather Upper

Mesh Lining for Added Breathability

Lightweight Slip Resistant Rubberlon Outsole



7.8. Men's High Gloss Dress Oxford

Model: Bates E22141

Color: Black

Sizes: 7M-17M, 7W-15W (including all half sizes)

Material and Construction:

Easy to Clean High Gloss Upper

Mesh Lining for Added Breathability

Lightweight Slip Resistant Rubberlon Outsole



7.9. Women's High Gloss Dress Oxford

Model: Bates E22741

Color: Black

Sizes: 5M-11M, 5W-11W (including all half sizes)

Material and Construction:

Easy to Clean High Gloss Upper

Mesh Lining for Added Breathability

Lightweight Slip Resistant Rubberlon Outsole



7.10. Athletic Oxford

Model: Reebok RB1100

Color: Black

Sizes: 4M-15M, 4W-13W (including all half sizes)

Material and Construction:

Type: Street Sport Jogger Oxford

Toe: Soft Toe

Upper: Easy Care Leather

Lining: Nylon Mesh

Insole: Removable EVA Cushion Insert with Sponge Rubber Heel Wedge

Outsole: SureGrip Plus Rubber Outsole and EVA Cushion Midsole

Special Feature: 100% Non-Metallic



8. Breast Badges

8.1. Jefferson Parish Fire Department

Model: Smith & Warren F146

Base Material: The base material to be used in the manufacture of the badges is brass alloy # 2100 (95% Copper, 5% Zinc), with a starting thickness of .064 inches.

Construction & Design: Badges are to be constructed of a single piece with exception of an applied 5/8" diameter center seal. Design is to be very 3D with integrated 3D features raised a minimum of 0.064" from the lowest point of the background. The customizable space of the top and bottom panels (Panels # 1 and # 4) shall span the entire width of their sections of the badge. Center seal shall cover the entire center space of the badge, leaving no space between the seal and panels 2 & 3.

The badges are to be manufactured with a heavy duty 4-part pin and safety clasp permanently attached to the reverse side of the badge using high temperature solder with minimum melting point of 1,600 degrees Fahrenheit.

The badges are to be manufactured with a hollow "shell" back. Back of the badge is to be stamped with manufacturer name and country of origin.

Shape: Finished badges to be uniformly curved from side to side.

Finishing:

Sil-Ray: Proprietary silver-tone electroplated layer is applied over the nickel base.

Then the surface is coated with a baked epoxy. (see below)

Gol-Ray: a 24K gold layer with a minimum thickness of 30u is applied over the nickel base. The badge is then coated with a baked epoxy. (see below)

Baked Epoxy: S cross-linked ponetic baking lacquer is applied over the entire surface of the badge. This layer is extremely hard. Minimum pencil hardness of 6H and can pass a 3000 hour salt spray test.

Enamel Type: All enamel to be hard fired cloisonné enamel. Melting point of the enamel must exceed 1,500 degrees Fahrenheit. All enamel will be BLUE in color.

Manufacturer Certification: The bidder agrees that, in order to ensure the security and quality of the badges, all manufacturing will be performed by a company certified, at the time of the award of this bid and throughout the manufacturing process, by the Institute of Heraldry of the United States Army to supply heraldic medals / insignia.

Workmanship: The bidder agrees to carry out all of the work associated with this bid in a professional manner and in accordance with the highest industry standards.

Inspection and Final Approval: The bidder agrees that Jefferson Parish Fire Department will be the sole undisputed authority for all determinations concerning the quality and acceptability of the finished badges.

Warranty: The bidder agrees to provide a full lifetime warranty, in accordance with the Magnusson Moss Act of 1975, for all of the finished badges provided to the Department under the terms of this bid.

Repairs: When deemed necessary by the Jefferson Parish Fire Department, the bidder agrees to repair damaged badges for any or all of the badges provided to the Department under the terms of this bid at no labor cost to the Jefferson Parish Fire Department.

When deemed necessary by the Jefferson Parish Fire Department, the bidder agrees to refinish any or all of the badges provided to the Department under the terms of this bid at no refinishing labor cost to the Jefferson Parish Fire Department. There shall be a designated warranty station located within a 30 minute drive of the Jefferson Parish Fire Department headquarters. Proof of warranty station designation from the manufacturer shall be submitted with the bid.

8.1.1. Fire Chief

LINE 1: FIRE
LINE 2: JEFFERSON PARISH
LINE 3: FIRE DEPT.
LINE 4: CHIEF
CENTER: C189BE
FINISH: GOL-RAY
ENAMEL: BLUE
TEXT SEPARATOR: DOTS



8.1.2. Deputy Chief

LINE 1: DEPUTY
LINE 2: JEFFERSON PARISH
LINE 3: FIRE DEPT.
LINE 4: CHIEF
CENTER: C187BE
FINISH: GOL-RAY
ENAMEL: BLUE
TEXT SEPARATOR: DOTS



8.1.3. Assistant Chief

LINE 1: ASSISTANT
LINE 2: JEFFERSON PARISH
LINE 3: FIRE DEPT.
LINE 4: CHIEF
CENTER: C187BE
FINISH: GOL-RAY
ENAMEL: BLUE
TEXT SEPARATOR: DOTS



8.1.4. District Chief

LINE 1: DISTRICT
LINE 2: JEFFERSON PARISH
LINE 3: FIRE DEPT.
LINE 4: CHIEF



CENTER: C177BE
FINISH: GOL-RAY
ENAMEL: BLUE
TEXT SEPARATOR: DOTS

8.1.5. Captain
LINE 1: CAPTAIN
LINE 2: JEFFERSON
LINE 3: PARISH
LINE 4: FIRE DEPT.
CENTER: C183BE
FINISH: GOL-RAY
ENAMEL: BLUE
TEXT SEPARATOR: DOTS



8.1.6. Lieutenant
LINE 1: LIEUTENANT
LINE 2: JEFFERSON
LINE 3: PARISH
LINE 4: FIRE DEPT.
CENTER: C181BE
FINISH: SIL-RAY
ENAMEL: BLUE
TEXT SEPARATOR: DOTS



8.1.7. Operator
LINE 1: OPERATOR
LINE 2: JEFFERSON
LINE 3: PARISH
LINE 4: FIRE DEPT.
CENTER: C162BBLUEM
FINISH: SIL-RAY
ENAMEL: BLUE
TEXT SEPARATOR: DOTS



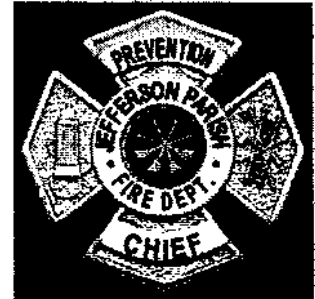
8.1.8. Firefighter
LINE 1: FIREFIGHTER
LINE 2: JEFFERSON
LINE 3: PARISH
LINE 4: FIRE DEPT.
CENTER: C193BE



FINISH: SIL-RAY
ENAMEL: BLUE
TEXT SEPARATOR: DOTS

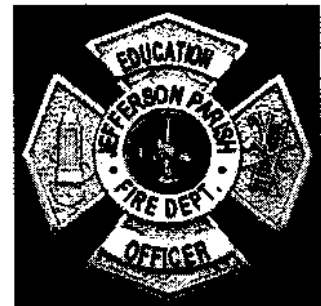
8.1.9. Fire Prevention Chief

LINE 1: PREVENTION
LINE 2: JEFFERSON PARISH
LINE 3: FIRE DEPT.
LINE 4: CHIEF
CENTER: C187BE
FINISH: GOL-RAY
ENAMEL: BLUE
TEXT SEPARATOR: DOTS



8.1.10. Fire Education Officer

LINE 1: EDUCATION
LINE 2: JEFFERSON PARISH
LINE 3: FIRE DEPT.
LINE 4: OFFICER
CENTER: C193BE
FINISH: GOL-RAY
ENAMEL: BLUE
TEXT SEPARATOR: DOTS



8.1.11. Fire Inspector

LINE 1: INSPECTOR
LINE 2: JEFFERSON
LINE 3: PARISH
LINE 4: FIRE DEPT.
CENTER: LA2M
FINISH: GOL-RAY
ENAMEL: BLUE
TEXT SEPARATOR: DOTS



8.1.12. Fire Investigator

LINE 1: INVESTIGATOR
LINE 2: JEFFERSON
LINE 3: PARISH
LINE 4: FIRE DEPT.
CENTER: C134E
FINISH: GOL-RAY



ENAMEL: BLUE
TEXT SEPARATOR: DOTS

8.1.13. Communications Supervisor

LINE 1: COMMUNICATIONS
LINE 2: JEFFERSON PARISH
LINE 3: FIRE DEPT.
LINE 4: SUPERVISOR
CENTER: C187BE
FINISH: GOL-RAY
ENAMEL: BLUE
TEXT SEPARATOR: DOTS



8.1.14. Communications Officer II

LINE 1: COMMUNICATIONS
LINE 2: JEFFERSON PARISH
LINE 3: FIRE DEPT.
LINE 4: OFFICER II
CENTER: C179BE
FINISH: GOL-RAY
ENAMEL: BLUE
TEXT SEPARATOR: DOTS



8.1.15. Communications Officer I

LINE 1: COMMUNICATIONS
LINE 2: JEFFERSON PARISH
LINE 3: FIRE DEPT.
LINE 4: OFFICER I
CENTER: C179BE
FINISH: GOL-RAY
ENAMEL: BLUE
TEXT SEPARATOR: DOTS



8.1.16. Safety Officer

LINE 1: SAFETY
LINE 2: JEFFERSON PARISH
LINE 3: FIRE DEPT.
LINE 4: OFFICER
CENTER: C187BE
FINISH: GOL-RAY
ENAMEL: BLUE



TEXT SEPARATOR: DOTS

8.1.17. Fire Training Officer

LINE 1: TRAINING
LINE 2: JEFFERSON PARISH
LINE 3: FIRE DEPT.
LINE 4: OFFICER
CENTER: C193BE
FINISH: GOL-RAY
ENAMEL: BLUE
TEXT SEPARATOR: DOTS



8.1.18. Fire Technician

LINE 1: FIRE
LINE 2: JEFFERSON PARISH
LINE 3: FIRE DEPT.
LINE 4: TECHNICIAN
CENTER: C193BE
FINISH: SIL-RAY
ENAMEL: BLUE
TEXT SEPARATOR: DOTS



8.2. Fire Services

Model: Smith & Warren A285_JPFD

Base Material: The base material to be used in the manufacture of the badges is brass alloy # 2100 (95% Copper, 5% Zinc), with a starting thickness of .064 inches.

Construction & Design: Badges are to be constructed of a single piece with exception of an applied 5/8" diameter center seal. Design is to be very 3D with integrated 3D features raised a minimum of 0.064" from the lowest point of the background.

The badges are to be manufactured with a heavy duty 4-part pin and safety clasp permanently attached to the reverse side of the badge using high temperature solder with minimum melting point of 1,600 degrees Fahrenheit.

The badges are to be manufactured with a hollow "shell" back. Back of the badge is to be stamped with manufacturer name and country of origin.

Shape: Finished badges to be uniformly curved from side to side.

Finishing:

Sil-Ray: Proprietary silver-tone electroplated layer is applied over the nickel base.

Then the surface is coated with a baked epoxy. (see below)

Gol-Ray: a 24K gold layer with a minimum thickness of 30u is applied over the nickel base. The badge is then coated with a baked epoxy. (see below)

Baked Epoxy: A cross-linked ponetic baking lacquer is applied over the entire surface of the badge. This layer is extremely hard. Minimum pencil hardness of 6H and can pass a 3000 hour salt spray test.

Enamel Type: All enamel to be hard fired cloisonné enamel. Melting point of the enamel must exceed 1,500 degrees Fahrenheit. All enamel will be BLUE in color.

Manufacturer Certification: The bidder agrees that, in order to ensure the security and quality of the badges, all manufacturing will be performed by a company certified, at the time of the award of this bid and throughout the manufacturing process, by the Institute of Heraldry of the United States Army to supply heraldic medals / insignia.

Workmanship: The bidder agrees to carry out all of the work associated with this bid in a professional manner and in accordance with the highest industry standards.

Inspection and Final Approval: The bidder agrees that Jefferson Parish Fire Department will be the sole undisputed authority for all determinations concerning the quality and acceptability of the finished badges.

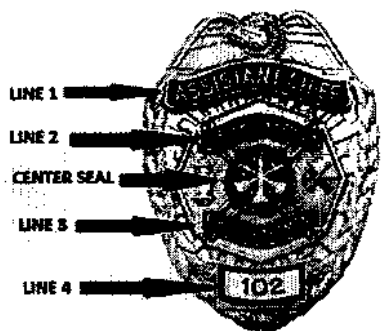
Warranty: The bidder agrees to provide a full lifetime warranty, in accordance with the Magnusson Moss Act of 1975, for all of the finished badges provided to the Department under the terms of this bid.

Repairs: When deemed necessary by the Jefferson Parish Fire Department, the bidder agrees to repair damaged badges for any or all of the badges provided to the Department under the terms of this bid at no labor cost to the Jefferson Parish Fire Department.

When deemed necessary by the Jefferson Parish Fire Department, the bidder agrees to refinish any or all of the badges provided to the Department under the terms of this bid at no refinishing labor cost to the Jefferson Parish Fire Department.

There shall be a designated warranty station located within a 30 mile radius of the Jefferson Parish Fire Department headquarters. Proof of warranty station designation from the manufacturer shall be submitted with the bid.

JEFFERSON PARISH FIRE SERVICES BREAST BADGE DESIGNS ARE TO BE AS FOLLOWS:



LINE 1: (WILL VARY BY BADGE)

LINE 2: JEFFERSON PARISH (ALL BADGES)

LINE 3: FIRE DEPARTMENT (ALL BADGES)

LINE 4: BADGE NUMBER TO BE SPECIFIED AT TIME OF ORDER

CENTER: (WILL VARY BY BADGE)

FINISH: GOL-RAY

ENAMEL: BLUE

LINES 1, 2, AND 3 SHALL BE REVERSE ENAMEL

8.2.1. Director

LINE 1: DIRECTOR

CENTER: C189BE

8.2.2. Assistant Director

LINE 1: ASST. DIRECTOR

CENTER: C187BE

8.2.3. I.T. Officer

LINE 1: I.T. OFFICER

CENTER: LA2M

8.2.4. HAZMAT Officer

LINE 1: HAZMAT OFFICER

CENTER: C622M

8.2.5. Fire Services Training Officer

LINE 1: TRAINING OFFICER

CENTER: C193BE

9. Hat Badges

9.1. Jefferson Parish Fire Department

Model: Smith & Warren, (Model to be determined by rank)

Base Material: The base material to be used in the manufacture of the badges is brass alloy # 2100 (95% Copper, 5% Zinc), with a starting thickness of .064 inches.

Construction & Design: The entire design is struck in a single piece. A front and back die is to be used to create a shell/hollow back. The part should be uniformly domed.

Attachment: The badges are to be manufactured with a 0.437" threaded screw in the middle with a cleat to keep the part from spinning. Screw must fit W.R. Cobb Series 180 head.

Finishing:

Sil-Ray: Proprietary silver-tone electroplated layer is applied over the nickel base. Then the surface is coated with a baked epoxy. (see below)

Gold-Ray: a 24K gold layer with a minimum thickness of 30u is applied over the nickel base. The badge is then coated with a baked epoxy. (see below)

Baked Epoxy: 5 cross-linked ponetic baking lacquer is applied over the entire surface of the badge. This layer is extremely hard. Minimum pencil hardness of 6H and can pass a 3000 hour salt spray test.

Workmanship: The bidder agrees to carry out all of the work associated with this bid in a professional manner and in accordance with the highest industry standards.

Inspection and Final Approval: The bidder agrees that the Jefferson Parish Fire Department will be the sole undisputed authority for all determinations concerning the quality and acceptability of the finished badges.

Warranty: The bidder agrees to provide a full lifetime warranty, in accordance with the Magnusson Moss Act of 1975, for all of the finished badges provided to the Department under the terms of this bid.

Repairs: When deemed necessary by the Jefferson Parish Fire Department the bidder agrees to repair damaged badges for any or all of the badges provided to the Department under the terms of this bid at no cost to the Jefferson Parish Fire Department.

When deemed necessary by the Jefferson Parish Fire Department the bidder agrees to refinish any or all of the badges provided to the Jefferson Parish Fire Department under the terms of this bid at no cost to the Jefferson Parish Fire Department. There shall be an authorized warranty center located within 30 miles of the Jefferson Parish Fire Department Administration building. The successful bidder shall submit with the bid a written statement from the manufacturer that the bidder is an authorized warranty station. Failure to submit this statement shall be cause for the bid to be rejected.

9.1.1. Fire Chief

Model: C102

Finish: Gol-Ray

9.1.2. Deputy Chief / Asst. Chief / Fire Prev. Chief / Safety Ofc. / Comm. Supv

Model: C103

Finish: Gol-Ray

9.1.3. District Chief

Model: C104

Finish: Gol-Ray

9.1.4. Captain

Model: C110

Finish: Gol-Ray

9.1.5. Lieutenant

Model: C109

Finish: Sil-Ray

9.1.6. Operator

Model: A285_JPF_OP_HAT

Finish: Sil-Ray

9.1.7. Firefighter

Model: C192L

Finish: Sil-Ray

9.1.8. Fire Education Officer / Fire Training Officer

Model: C192L

Finish: Gol-Ray

9.1.9. Inspector

Model: A285_LA_PL

Finish: Gol-Ray

9.1.10. Investigator

Model: C134PL

Finish: Gol-Ray

9.1.11. Communications Officer I / Communications Officer II

Model: C179PL

Finish: Gol-Ray

9.2. Fire Services

Model: Smith & Warren S637

Base Material: The base material to be used in the manufacture of the badges is brass alloy # 2100 (95% Copper, 5% Zinc), with a starting thickness of .064 inches.

Construction & Design: The entire design is struck in a single piece. A front and back die is to be used to create a shell/hollow back. The part should be uniformly domed.

Attachment: The badges are to be manufactured with a 0.437" threaded screw in the middle with a cleat to keep the part from spinning. Screw must fit W.R. Cobb Series 180 head.

Finishing:

Sil-Ray: Proprietary silver-tone electroplated layer is applied over the nickel base.

Then the surface is coated with a baked epoxy. (see below)

Gol-Ray: a 24K gold layer with a minimum thickness of 30u is applied over the nickel base. The badge is then coated with a baked epoxy. (see below)

Baked Epoxy: S cross-linked ponetic baking lacquer is applied over the entire surface of the badge. This layer is extremely hard. Minimum pencil hardness of 6H and can pass a 3000 hour salt spray test.

Enamel Type: All enamel to be hard fired cloisonné enamel. Melting point of the enamel must exceed 1,500 degrees Fahrenheit. All enamel will be BLUE in color.

Workmanship: The bidder agrees to carry out all of the work associated with this bid in a professional manner and in accordance with the highest industry standards.

Inspection and Final Approval: The bidder agrees that the Jefferson Parish Fire Department will be the sole undisputed authority for all determinations concerning the quality and acceptability of the finished badges.

Warranty: The bidder agrees to provide a full lifetime warranty, in accordance with the Magnusson Moss Act of 1975, for all of the finished badges provided to the Department under the terms of this bid.

Repairs: When deemed necessary by the Jefferson Parish Fire Department the bidder agrees to repair damaged badges for any or all of the badges provided to the Department under the terms of this bid at no cost to the Jefferson Parish Fire Department.

When deemed necessary by the Jefferson Parish Fire Department the bidder agrees to refinish any or all of the badges provided to the Jefferson Parish Fire Department under the terms of this bid at no cost to the Jefferson Parish Fire Department. There shall be an authorized warranty center located within 30 miles of the Jefferson Parish Fire Department Administration building. The successful bidder shall submit with the bid a written statement from the manufacturer that the bidder is an authorized warranty station. Failure to submit this statement shall be cause for the bid to be rejected.

9.2.1. Director

LINE 1: DIRECTOR

LINE 2: JEFFERSON PARISH

LINE 3: FIRE DEPARTMENT

LINE 4: BADGE NUMBER (TO BE SPECIFIED AT TIME OF ORDER)

CENTER: C189BE

FINISH: GOL-RAY

9.2.2. Assistant Director

LINE 1: ASST. DIRECTOR

LINE 2: JEFFERSON PARISH

LINE 3: FIRE DEPARTMENT

LINE 4: BADGE NUMBER (TO BE SPECIFIED AT TIME OF ORDER)

CENTER: C187BE

FINISH: GOL-RAY

9.2.3. I.T. Officer

LINE 1: I.T. OFFICER

LINE 2: JEFFERSON PARISH

LINE 3: FIRE DEPARTMENT

LINE 4: BADGE NUMBER (TO BE SPECIFIED AT TIME OF ORDER)

CENTER: LA2M

FINISH: GOL-RAY

9.2.4. HAZMAT Officer

LINE 1: HAZMAT OFFICER

LINE 2: JEFFERSON PARISH

LINE 3: FIRE DEPARTMENT

LINE 4: BADGE NUMBER (TO BE SPECIFIED AT TIME OF ORDER)

CENTER: C622M

FINISH: GOL-RAY

9.2.5. Fire Services Training Officer

LINE 1: TRAINING OFFICER
LINE 2: JEFFERSON PARISH
LINE 3: FIRE DEPARTMENT
LINE 4: BADGE NUMBER (TO BE SPECIFIED AT TIME OF ORDER)
CENTER: C193BE
FINISH: GOL-RAY

10. Name Tags

Manufacturer: Smith & Warren

Model: C558A_1

Description: ½" x 2-1/2" Nameplate with one line of text (First initial, Last Name)

Engraving Specification: Minimum depth of .020" with 25 degree cutting tool

Lettering Font: Block

Lettering Color: Blue (Must match TIOH Chip #18)

Lettering Enamel: Oil Based Soft Enamel

Attachment: Clutchback

Shape: Flat

Finish: GOL-RAY or SIL-RAY (determined by rank)

Surface Preparation: High Polish

11. Tie Tacs

11.1. Gold Tie Tac

Comparable in size, finish, and design to Premier Emblems P4000

11.2. Silver Tie Tac

Comparable in size, finish, and design to Premier Emblems P4001

12. Collar Devices

Collar Device 1 (bugle "cut-outs"):

Model: Smith & Warren, (Model to be determined by rank)

Base Material: The base material to be used in the manufacture of the collar insignia is brass alloy # 2100 (95% Copper, 5% Zinc). Starting thickness 0.064"

Construction & Design: Parts to be die struck in a single piece. Parts are to be solid back.

Attachment: Two clutches are to be fusion welded to the rear surface of the insignia.

Shape: Flat

Finishing:

Sil-Ray: Proprietary silver-tone electroplated layer is applied over the nickel base.

Then the surface is coated with a baked epoxy. (see below)

Gol-Ray: a 24K gold layer with a minimum thickness of 30u is applied over the nickel base. The badge is then coated with a baked epoxy. (see below)

Baked Epoxy: 5 cross-linked ponetic baking lacquer is applied over the entire surface of the badge. This layer is extremely hard. Minimum pencil hardness of 6H and can pass a 3000 hour salt spray test.

Workmanship: The bidder agrees to carry out all of the work associated with this bid in a professional manner and in accordance with the highest industry standards.

Inspection and Final Approval: The bidder agrees that the Jefferson Parish Fire Department will be the sole undisputed authority for all determinations concerning the quality and acceptability of the finished badges.

Warranty: The bidder agrees to provide a full lifetime warranty, in accordance with the Magnusson Moss Act of 1975, for all of the finished badges provided to the Department under the terms of this bid.

Repairs: When deemed necessary by the Jefferson Parish Fire Department the bidder agrees to repair damaged badges for any or all of the badges provided to the Department under the terms of this bid at no cost to the Jefferson Parish Fire Department.

When deemed necessary by the Jefferson Parish Fire Department the bidder agrees to refinish any or all of the badges provided to the Jefferson Parish Fire Department under the terms of this bid at no cost to the Jefferson Parish Fire Department.

There shall be an authorized warranty center located within 30 miles of the Jefferson Parish Fire Department Administration building. The successful bidder shall submit with the bid a written statement from the manufacturer that the bidder is an authorized warranty station. Failure to submit this statement shall be cause for the bid to be rejected.

12.1. Fire Chief

MODEL: C121S (5 CROSSED BUGLES)

FINISH: GOL-RAY

12.2. Deputy Chief / Asst. Chief / Prevention Chief / Safety Officer / Comm. Supv.

MODEL: C122S (4 CROSSED BUGLES)

FINISH: GOL-RAY

12.3. District Chief

MODEL: C119S (3 CROSSED BUGLES)

FINISH: GOL-RAY

12.4. Captain

MODEL: C116S (2 SIDE-BY-SIDE BUGLES)

FINISH: GOL-RAY

12.5. Lieutenant – C115S

MODEL: C115S (1 BUGLE)

FINISH: SIL-RAY

Collar Device 2 (Round metal / enamel discs):

Model: Smith & Warren M1702JPFD

Base Material: The base material to be used in the manufacture of the collar insignia is brass alloy # 2100 (95% Copper, 5% Zinc).

Construction & Design: To be constructed of two pieces. The base is a round insignia 15/16" in diameter. A round rank insignia of 5/8" diameter is to be applied in the center.

Attachment: Two clutches to be fusion welded to the rear surface of the insignia. Clutch pins to be horizontally aligned and centered.

Shape: Flat

Finishing: All of the finished badges will be highly polished and then coated with a base nickel electroplate layer having a minimum thickness of 70 microinches.

Sil-Ray: Proprietary silver-tone electroplated layer is applied over the nickel base. Then the surface is coated with a baked epoxy. (see below)

Gold-Ray: a 24K gold layer with a minimum thickness of 30u is applied over the nickel base. The badge is then coated with a baked epoxy. (see below)

Baked Epoxy: 5 cross-linked ponetic baking lacquer is applied over the entire surface of the badge. This layer is extremely hard. Minimum pencil hardness of 6H and can pass a 3000 hour salt spray test.

Enamel Type: All enamel to be hard fired cloisonné enamel. Melting point of the enamel must exceed 1,500 degrees Fahrenheit. All enamel will be BLUE in color.

Manufacturer Certification: The bidder agrees that, in order to ensure the security and quality of the badges, all manufacturing will be performed by a company certified, at the time of the award of this bid and throughout the manufacturing process, by the Institute of Heraldry of the United States Army to supply heraldic medals / insignia.

Workmanship: The bidder agrees to carry out all of the work associated with this bid in a professional manner and in accordance with the highest industry standards.

Inspection and Final Approval: The bidder agrees that Jefferson Parish Fire Department will be the sole undisputed authority for all determinations concerning the quality and acceptability of the finished badges.

Warranty: The bidder agrees to provide a full lifetime warranty, in accordance with the Magnusson Moss Act of 1975, for all of the finished badges provided to the Department under the terms of this bid.

Repairs: When deemed necessary by the Jefferson Parish Fire Department, the bidder agrees to repair damaged badges for any or all of the badges provided to the Department under the terms of this bid at no labor cost to the Jefferson Parish Fire Department.

When deemed necessary by the Jefferson Parish Fire Department, the bidder agrees to refinish any or all of the badges provided to the Department under the terms of this bid at no refinishing labor cost to the Jefferson Parish Fire Department.

There shall be a designated warranty station located within a 30 mile radius of the Jefferson Parish Fire Department headquarters. Proof of warranty station designation from the manufacturer shall be submitted with the bid.

12.6. Education Officer / Training Officer

FINISH: GOL-RAY

CENTER: C193BE

12.7. Inspector

FINISH: GOL-RAY

CENTER: LA2M

12.8. Investigator

FINISH: GOL-RAY

CENTER: C134E

12.9. Communications Officer I / Communications Officer II

FINISH: GOL-RAY

CENTER: C179BE

12.10. HAZMAT Officer

FINISH: GOL-RAY

CENTER: C622M

13. Soft Shoulder Insignia

General Description: The slide on Shoulder Board is a finished tube, pressed flat, to be worn over the sewn-in tab on the shoulder of the dress uniform coat or shirt. All colors, sizes, and constructions are to match original sample manufactured by Eiseman-Ludmar Co., Inc.

Fabric: 100% polyester twill, Color: navy, to match the original Eiseman-Ludmar sample, and must be completely color fast both fabric, and embroidery yarn. (Finished product should be dry-cleaned to preserve crisp press.) The fabric is to be laminated to a non-woven interfacing to provide sufficient body and hold the press.

Insignia: All rank insignia to be embroidered in Permagold thread to match U.S. Navy shade standard. Sufficient underlay and stitch density to prevent any ground fabric from showing through embroidery, and to provide thick, dense appearance as per Eiseman-Ludmar standard.

Dimensions: The finished shoulder board is a trapezoidal tube. The height measures exactly 4-1/4". The top (narrow) edge measures exactly 1-7/8". The bottom (wider) edge measures exactly 2-1/2". There is to be an embroidered stripe placed exactly 5/16" from the top and bottom edges of the fabric. The top stripe, at the narrow edge, has a diameter of 1/8". The bottom stripe, at the wide edge, has a diameter of 1/4". Each stripe must cover the front of the epaulette completely, wrapping around to the underside of the board no less than 1/8". Stripe color to be the same Permagold thread used for insignia.

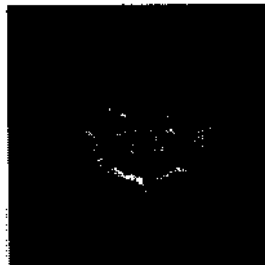
Finishing: The finished shoulder board will be pressed flat. Top and bottom edges top-stitched, with excess fabric trimmed to 1/4" size, and neatly folded under. All loose threads to be trimmed. Inside seam to be double stitched and back-tacked at ends, with seam split during pressing to reduce bulk, edges trimmed. All threads must match color of ground fabric, and must be trimmed away. Final product to meet or exceed quality provided by Eiseman-Ludmar standard.

Country of Manufacture: Finished products to be 100% made in U.S.A.

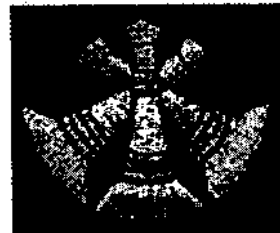
- 13.1. Fire Chief**
Five Crossed Bugles



- 13.2. Deputy Chief / Asst. Chief / Prevention Chief / Safety Officer / Comm. Supv.**
Four Crossed Bugles



- 13.3. District Chief**
Three Crossed Bugles



14. Gloves

FABRIC: 98% Cotton. 2% Lycra

COLOR: WHITE

SIZE: 9" for sizes SMALL, MEDIUM, LARGE and X-LARGE. 10-12.5" for size 2 X-Large

DESCRIPTION: Three rows of stitching on back of hand with Sure Grip dots on the palms and fingers for good grip. The wrist of the glove shall be shirred for best fit.

15. Miscellaneous

- 15.1. Embroidery of JPFED logo, name, and rank**

All items which require embroidery shall include the cost of the embroidery in the price of the item. Additionally, there shall be an additional line item to be used for embroidery of any vendor-provided or department-provided, off-contract items.

- 15.2. Application of stripes on sleeves of dress coat**

Stripes are applied on both sleeves

Start 3" from cuff all the way around the sleeve space stripes 1/4" apart

- 15.2.1. Antique Grey**

Style: BNFV-493-12-09174CL, 3/8" Nylon Vellum Braid

Color: Antique Grey# 493

Lieutenants shall have one stripe on each sleeve

15.2.2. Military Gold

Style: BNFV-96-12-09174CL, 3/8" Nylon Vellum Braid

Color: Military Gold # 96

The Fire Chief shall have five stripes on each sleeve

Deputy Chiefs, Assistant Chiefs, the Fire Prevention Chief, the Safety Officer, and the Communications Supervisor shall have four stripes on each sleeve

District Chiefs shall have three stripes on each sleeve

Captains, Inspectors, Investigators, Communications Officers I and II, and Training Officers shall have two stripes on each sleeve

15.2.3. Removal of stripes

It may become necessary, due to promotion or demotion, to remove stripes from the sleeves of the dress uniform coat. The vendor shall include a line item for stripe removal.

15.3. Application of Maltese cross(es) on sleeves of dress coat

15.3.1. Antique Grey

Style: Y/B038-LBT, 3/4" Maltese Cross

Color: Antique Grey #493 on Navy Blue Twill

Firefighters, Operators, Lieutenants, and Fire Technicians shall have 1 Maltese Cross for every five years of service

15.3.2. Military Gold

Style: Y/8038-LBT, 3/4" Maltese Cross

Color: Military Gold #96 on Navy Blue Twill

Captains, Inspectors, Investigators, Communications Officers I and II, Training Officers, and all Chief Officers shall have 1 Maltese Cross for every five years of service

15.3.3. Removal of Maltese cross(es)

It may become necessary, due to promotion, demotion, or an increase in the number of Maltese Crosses earned, to remove Maltese Crosses from the sleeves of the dress uniform coat. The vendor shall include a line item for stripe removal.

15.4. Tailoring of Dress Uniforms as needed

As per specifications, alterations of daily wear uniforms shall be included at no additional cost to the department or employees. Vender shall provide costs for tailoring of formal dress uniforms.

15.5. Updating of light tactical shirts

Vendor shall provide a price for the optional updating of previously purchased light tactical shirts. Such updating shall include the removal of sewn-on name strips and the application of a vendor-supplied badge tab.

15.6. Replacement Parts for Dress Hats

15.6.1. Gold FD Buttons

Regulation lined split prong brass button with FD enclosed in wreath and finished in gold plating.

15.6.2. Silver FD Buttons

Regulation lined split prong brass button with FD enclosed in wreath and finished in silver plating.

15.6.3. Gold Expansion Strap

Coiled wire with 1/2" wrap strap made to expand up to 12", capped with loops and finished in Gold plating.

15.6.4. Silver Expansion Strap

Coiled wire with 1/2" wrap strap made to expand up to 12", capped with loops and finished in silver plating.

15.6.5. Black Strap

1/2 polypropylene strap made to 12" length and non-expandable. Must have decorative loops on each end.

15.6.6. Mourning Strap – Black with Red Stripe

Eiseman-Ludmar Co. Mourning cap strap. Black with a thin red line.
Model#N/03050-BK

15.6.7. Rain Cover

10 gauge plastic patterned with elastic rim made to fit and cover custom style bell crown caps. Must completely cover the cap visor.

15.7. Garment Bag

STYLE: FIRE/MILITARY

DIMENSIONS: LENGTH: 40", WIDTH: 24"

WEIGHT: 9 OUNCES

COLOR: BLACK WITH CENTER ZIPPER AND RED PIPING

MATERIAL: 100% NYLON, WATER RESISTANT

INTERNAL LINING: 100% WHITE LINEN

HANDLES: THERE SHALL BE TOP AND BOTTOM CARRY HANDLES

POCKET: THERE SHALL BE A REAR DOCUMENT POCKET

IDENTIFICATION: THERE SHALL BE AN EXTERNAL IDENTIFICATION CARD HOLDER ON THE LEFT SIDE OF THE BAG.

15.8. Hat Bag

STYLE: FIREMAN BELL/FEMALE MILITARY

DIMENSIONS: LENGTH: 12", WIDTH: 10", HEIGHT: 5"

WEIGHT: 6 OUNCES

COLOR: BLACK

MATERIAL: 100% NYLON, WATER RESISTANT

INTERNAL LINING: 100% WHITE LINEN

BADGE/ID HOLDER: THERE SHALL BE AN INTERNAL BADGE/ID HOLDER

NAME/RANK HOLDER: THERE SHALL BE A NAME/RANK HOLDER ON THE EXTERIOR OF THE BAG.

FULLY COLLAPSING FOR EASE OF TRANSPORT IN LUGGAGE WHEN NOT IN USE.

16. Artwork Samples

16.1. JPFD cross logo



16.2. Fire Services logo



16.3. Fire Training cross logo



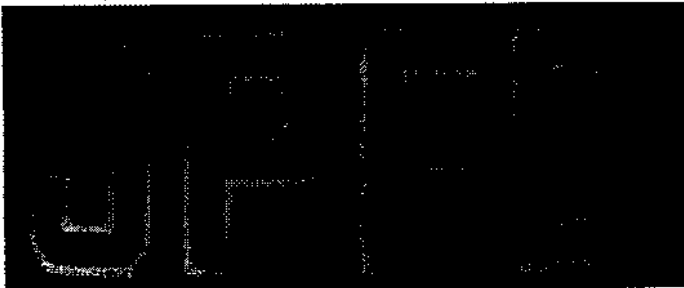
16.4. Athletic wear JPFD logo (red items)



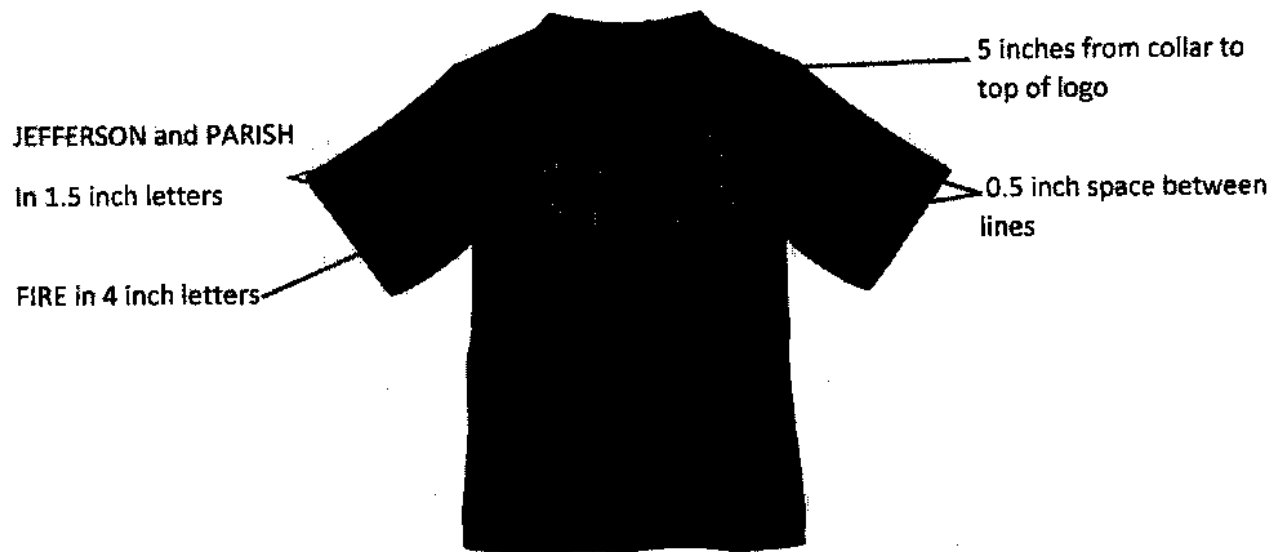
16.5. Athletic wear JPFD logo (grey/silver items)



16.6. JPFD fill embroidery sample



16.7. JEFFERSON PARISH FIRE logo for rear of navy t-shirts



DATE: 6/30/2021

BID NO.: 50-00135057

INVITATION TO BID
THIS IS NOT AN ORDER

Page: 1

JEFFERSON PARISH

PURCHASING DEPARTMENT
P.O. BOX 9
GRETNA, LA. 70054-0009
504-364-2678

BUYER: DREAMEY@jeffparish.net

BIDS WILL BE RECEIVED ONLINE VIA WWW.JEFFPARISHBIDS.NET UNTIL 2:00 PM, 7/15/2021 AND PUBLICLY OPENED THEREAFTER IN THE WEST BANK PURCHASING DEPT, SUITE 4400, JEFFERSON PARISH GENERAL GOVERNMENT BUILDING, 200 DERBIGNY STREET, GRETNA, LA 70053. At no charge, bidders are to submit via Jefferson Parish's electronic procurement page by visiting www.jeffparishbids.net to register for this free site. Additional instructions are included in the text box highlighting electronic procurement.

LATE BIDS WILL NOT BE ACCEPTED

NOTE: ONLY BIDS WRITTEN IN INK OR TYPEWRITTEN, AND PROPERLY SIGNED BY A MEMBER OF THE FIRM OR AUTHORIZED REPRESENTATIVE, WILL BE ACCEPTED. PENCIL AND/OR PHOTOSTATIC FIGURES OR SIGNATURES SHALL RESULT IN BID REJECTION. HOWEVER, ELECTRONIC SIGNATURES AS DEFINED IN LSA - R.S. 9:2620(8) ARE ACCEPTABLE. SIGNATURE MUST BE A SECURED DIGITAL SIGNATURE.

INSTRUCTIONS FOR BIDDERS AND GENERAL CONDITIONS
THE FOLLOWING INSTRUCTIONS APPLY TO ALL BIDS

All bids submitted are subject to these instructions and general conditions and any special conditions and specifications contained herein, all of which are made part of this bid proposal reference. By submitting a bid, vendor agrees to comply with all provisions of Louisiana Law as well be in compliance with the Jefferson Parish Code of Ordinances, Louisiana Code of Ethics, applicable Jefferson Parish ethical standards and Jefferson Parish Resolution No. 113646 and/or Resolution No. 113647 as amended.

Jefferson Parish adheres to the Louisiana Code of Governmental Ethics, contained in Louisiana Revised Statutes Annotated, R.S. 42:1101, et seq. Vendor/Proposer by this submission, warrants that there are no "conflicts of interest" related to this procurement that would violate applicable Louisiana Law. Violation of the Louisiana Code of Governmental Ethics may result in rescission of contract, permit or licenses, and the imposition of fines and/or penalties, without contractual liability to the public in accordance with applicable law.

All vendors submitting bids should register as a Jefferson Parish vendor if not already yet registered. Registration forms may be downloaded from <http://purchasing.jeffparish.net> and by clicking on Vendor Information. Current W-9 forms with respective Tax Identification numbers and vendor applications may be submitted at any time; however, if your company is not registered and/or a current W-9 form is not on file, vendor registration is mandatory. Vendors may experience a delay in payment if your company is not a registered vendor with Jefferson Parish.

All quotations shall be based on F.O.B. Agency warehouse or job site, anywhere within the Parish as designated by the Purchasing Department. This provision does not apply to public works projects

JEFFERSON PARISH requires all products to be new (current) and all work must be performed according to standard practices for the project. Unless otherwise specified, no aftermarket parts will be accepted. Unless otherwise specified, all workmanship and materials must have at least one (1) year guaranty, in writing, from the date of delivery and/or acceptance of the project. Any deviations or alterations from the specifications must be indicated and/or supporting documentation supplied with bid submission.

Bidders should submit all questions in writing via email to the buyer's email address as indicated above, no later than Five (5) working days prior to the bid opening. Bid numbers should be mentioned in all requests. If submitting online, vendors may send questions via the E-Procurement site no later than Five (5) working days prior to the bid opening.

If this bid requires a pre-bid conference (see Additional Requirements section), bidders are advised that such conference will be held to allow bidders the opportunity to identify any discrepancies in the bid specifications and seek further clarification regarding instructions. The Purchasing Department will issue a written response to bidders' questions in the form of an Addendum. Please note that all official communication will be expressed in the form of an addendum.

Visit our website at [HTTP://PURCHASING.JEFFPARISH.NET](http://PURCHASING.JEFFPARISH.NET)

All formal Addenda require written acknowledgement on the bid form by the bidder. Failure to acknowledge an Addendum on the bid form shall cause the bid to be rejected. JEFFERSON PARISH reserves the right to award bid to next lowest responsive and responsible bidder in this event.

JEFFERSON PARISH will accept one price for each item unless otherwise indicated. Two or more prices for one item will result in bid rejection. Bidders are required to complete, sign and return the bid form and/or complete and return the associated line item pricing forms as indicated. Vendors must not alter the bid forms. Doing so will cause the bid to be rejected.

A corporate resolution or written evidence of the individual signing the bid having such authority must be submitted with the bid. Failure to comply will cause bid to be rejected. For corporate entities, such written evidence may be a printout of the Louisiana Secretary of State's website listing the signatory as an officer. Such printout shall be included with the bid submission. Bids submitted by Owners or Sole Proprietorships must include certification that he or she owns the entity for which the bid is signed. This documentation must be submitted with the bid. Failure to do so will result in bid rejection.

NOTE: A sample corporate resolution can be downloaded from our website <http://purchasing.jeffparish.net> or you may provide your own document. A sample certification of sole proprietorship can also be downloaded from our website <http://purchasing.jeffparish.net> or you may provide your own document.

INSTRUCTIONS FOR BIDDERS AND GENERAL CONDITIONS

A. AWARD OF CONTRACT: JEFFERSON PARISH reserves the right to award contracts or place orders on a lump sum or individual item basis, or such combination, as shall in its judgment be in the best interest of JEFFERSON PARISH. Every contract or order shall be awarded to the LOWEST RESPONSIVE AND RESPONSIBLE BIDDER, taking into consideration the CONFORMITY WITH THE SPECIFICATIONS and the DELIVERY AND/OR COMPLETION DATE. SPLIT AWARDS MADE TO SEVERAL VENDORS WILL ONLY BE GRANTED TO THOSE DEEMED RESPONSIVE AND RESPONSIBLE.

All bid prices shall remain valid for 45 days. Jefferson Parish and the lowest responsive and responsible bidder(s) by mutual written consent may mutually agree to extend the deadline for award by one (1) or more extensions of thirty (30) calendar days.

PROTESTS: Only those vendors that submit bids in response to this solicitation may protest any element of the procurement, in writing to the Director of the Purchasing Department. Written protest must be received within 48 hours of the release of the bid tabulation by the Purchasing Department. After consultation, the Parish Attorney's Office will then respond to protests in writing. (For more information, please see Chapter 2, Article VII, Division 2, Sec. 2-914.1 of the Jefferson Parish Code of Ordinances.)

PREFERENCE: Unless federal funding is directly spent by Jefferson Parish for this purchase, preference is hereby given to materials, supplies, and provisions produced, manufactured or grown in Louisiana, quality being equal to articles offered by competitors outside the state. "LSA - R.S. 38:2251-2261"

B. USE OF BRAND NAMES AND STOCK NUMBERS: Where brand names and stock numbers are specified, it is for the purpose of establishing certain minimum standards of quality. Bids may be submitted for products of equal quality, provided brand names and stock numbers are specified. Complete product data may be required prior to award.

C. CANCELLATION OF CONTRACT: JEFFERSON PARISH reserves the right to cancel all or any part if not shipped promptly. No charges will be allowed for parking or cartage unless specified in quotation. The order must not be filled at a higher price than quoted. JEFFERSON PARISH reserves the right to cancel any contract at anytime and for any reason by issuing a THIRTY (30) day written notice to the contractor.

For good cause and as consideration for executing a contract with Jefferson Parish, vendor conveys, sells, assigns and transfers to Jefferson Parish or its assigns all rights, title and interest in and to all causes of action it may now or hereafter acquire under the antitrust laws of the United States and the State of Louisiana, relating to the particular good or services purchased or acquired by Jefferson Parish.

D. PRICES: Jefferson Parish is exempt from paying sales tax under LSA-R.S. 47:301 (8)(c). All prices for purchases by Jefferson Parish of supplies and materials shall be quoted in the unit of measure specified and unless otherwise specified, shall be exclusive of state and local taxes. The price quoted for work shall be stated in figures. In the event there is a difference in unit prices and totals, the unit price shall prevail.

Quantities listed are for bidding purposes only. Actual requirements may be more or less than quantities listed.

Bidders are not to exclude from participation in, deny the benefits of, or subject to discrimination under any program or activity, any person in the United States on the grounds of race, color, national origin, or sex; nor discriminate on the basis of age under the Age Discrimination Act of 1975, or with respect to an otherwise qualified handicapped individual as provided in Section 504 of the Rehabilitation Act of 1973, or on the basis of religion, except that any exemption from such prohibition against discrimination on the basis of religion as provided in the Civil Rights Act of 1964, or Title VI and VII of the Act of April 11, 1968, shall also apply. This assurance includes compliance with the administrative requirements of the Revenue Sharing final handicapped discrimination provisions contained in Section 51.55 (c), (d), (e), and (k)(5) of the Regulations. New construction or renovation projects must comply with Section 504 of the 1973 Rehabilitation Act, as amended, in accordance with the American National Standard Institute's specifications (ANSI A17.1-1961).

DATE: 6/30/2021

BID NO.: 50-00135057

Page: 3

INSTRUCTIONS FOR BIDDERS AND GENERAL CONDITIONS

Jefferson Parish and its partners as the recipients of federal funds are fully committed to awarding a contract(s) to firm(s) that will provide high quality services and that are dedicated to diversity and to containing costs. Thus, Jefferson Parish strongly encourages the involvement of minority and/or woman-owned business enterprises (DBE's, including MBE's, WBE's and SBE's) to stimulate participation in procurement and assistance programs.

The purpose and intention of this invitation to bid is to afford all suppliers an equal opportunity to bid on all construction, maintenance, repair, operating supplies and/or equipment listed in this bid proposal. JEFFERSON PARISH WILL ACCEPT ONE BID ONLY FROM EACH VENDOR. Items bid must meet specifications.

Advertised bids will be tabulated and a copy of the tabulation will be forwarded to each responding bidder.

IN ACCORDANCE WITH STATE REGULATIONS JEFFERSON PARISH OFFERS ELECTRONIC PROCUREMENT TO ALL VENDORS

This electronic procurement system allows vendors the convenience of reviewing and submitting bids online. This is a secure site and authorized personnel have limited read access only. Bidders are to submit electronically using this free service; while the website accepts various file types, one single PDF file containing all appropriate and required bid documents is preferred. Bidders submitting uploaded images of bid responses are solely responsible for clarity. If uploaded images/documents are not legible, then bidder's submission will be rejected. Please note all requirements contained in this bid package for electronic bid submission.

Please visit our E-Procurement Page at www.jeffparishbids.net to register and view Jefferson Parish solicitations. For more information, please visit the Purchasing Department page at <http://purchasing.jeffparish.net>.

The general specifications for construction projects and the purchase of materials, services and/or supplies are those adopted by the JEFFERSON PARISH Council by Resolution No. 113646 or 113647 as amended. The general conditions adopted by this resolution shall be considered as much a part of this document as if they were written wholly herein. A copy may be obtained from the Office of the Parish Clerk, Suite 6700, Jefferson Parish General Government Building, 200 Derbigny Street, Gretna, LA 70053. You may also obtain a copy by visiting the Purchasing Department webpage at <http://purchasing.jeffparish.net> and clicking on Online Forms.

ADDITIONAL REQUIREMENTS FOR THIS BID

PLEASE MATCH THE NUMBERS PRINTED IN THIS BOX WITH THE CORRESPONDING INSTRUCTIONS BELOW.

10,12,13,15

1. All bidders must attend the MANDATORY pre-bid conference and will be required to sign in and out as evidence of attendance. In accordance with LSA R.S. 38:2212(I), all prospective bidders shall be present at the beginning of the MANDATORY pre-bid conference and shall remain in attendance for the duration of the conference. Any prospective bidder who fails to attend the conference or remain for the duration shall be prohibited from submitting a bid for the project.
2. Attendance to this pre-bid conference is optional. However, failure to attend the pre-bid conference shall not relieve the bidder of responsibility for information discussed at the conference. Furthermore, failure to attend the pre-bid conference and inspection does not relieve the successful bidder from the necessity of furnishing materials or performing any work that may be required to complete the work in accordance with the specification with no additional cost to the owner.
3. Contractor must hold current applicable JEFFERSON PARISH licenses with the Department of Inspection and Code Enforcement. Contractor shall obtain any and all permits required by the JEFFERSON PARISH Department of Inspection and Code Enforcement. The contractor shall be responsible for the payment of these permits. All permits must be obtained prior to the start of the project. Contractor must also hold any and all applicable Federal and State licenses. Contractor shall be responsible for the payment of these permits and shall obtain them prior to the start of the project.

INSTRUCTIONS FOR BIDDERS AND GENERAL CONDITIONS

4. A LA State Contractor's License will be required in accordance with LSA R.S. 37-2150 et. seq. and such license number will be shown on the outside of the bid electronic envelope. Failure to comply will cause the bid to be rejected. When submitting the bid electronically, the license number must be entered in the appropriate field in the electronic procurement system. Failure to comply will cause the bid to be rejected.
5. It is the bidder's responsibility to visit the job site and evaluate the job before submitting a bid.
6. Job site must be clean and free of all litter and debris daily and upon completion of the contract. Passageways must be kept clean and free of material, equipment, and debris at all times. Flammable material must be removed from the job site daily because storage will not be permitted on the premises. Precaution must be exercised at all times to safeguard the welfare of JEFFERSON PARISH and the general public.
7. **PUBLIC WORKS BIDS:** All awards for public works in excess of \$5,000.00 will be reduced to a formal contract which shall be recorded at the contractor's expense with the Clerk of Court and Ex-Officio Recorder of Mortgages for the Parish of Jefferson. A price list of recordation costs may be obtained from the Clerk of Court and Ex-Officio Recorder of Mortgages for the Parish of Jefferson. All awards in excess of \$25,000.00 will require both a performance and a payment bond. Unless otherwise stated in the bid specifications, the performance bond requirements shall be 100% of the contract price. Unless otherwise state in the bid specifications, the payment bond requirements shall be 100% of the contract price. Both bonds shall be supplied at the signing of the contract.
8. **NON-PUBLIC WORKS BIDS:** A performance bond will be required for this bid. The amount of the bond will be 100% of the contract price unless otherwise indicated in the specifications. The performance bond shall be supplied at the signing of the contract.
9. **NON-PUBLIC WORKS BIDS:** A payment bond will be required for this bid. The amount of the bond will be 100% of the contract price unless otherwise indicated in the specifications. The payment bond shall be supplied at the signing of the contract.
10. All bidders must comply with the requirements stated in the attached "Standard Insurance Requirements" sheet attached to this bid solicitation. Failure to comply with this instruction will result in bid rejection.
11. A bid bond will be required with bid submission in the amount of 5% of the total bid, unless otherwise stated in the bid specifications. All sureties must be in original format (no copies) When submitting a bid online, vendors must submit an electronic bid bond through the respective online clearinghouse bond management system(s) as indicated in the electronic bid solicitation on Central Auction House. No scanned paper copies of any bid bond will be accepted as part of the electronic bid submission.
12. This is a requirements contract to be provided on an as needed basis. JEFFERSON PARISH makes no representations on warranties with regard to minimum guaranteed quantities unless otherwise stated in the bid specifications.
13. Freight charges should be included in total cost when quoting. If not quoted FOB DELIVERED, freight must be quoted as a separate item. Bid may be rejected if not quoted FOB DELIVERED or if freight charges are not indicated on bid form.
14. **PUBLIC WORKS BIDS - Completed, Signed and Properly Notarized Affidavits Required;** This applies to all solicitations for construction, alteration or demolition of public buildings or projects, in conformity with the provisions contained in LSA-RS 38:2212.9, LSA-RS 38:2212.10, LSA-RS 38:2224, and Sec 2-923.1 of the Jefferson Parish Code of Ordinances. For bidding purposes, all bidders must submit with bid submission COMPLETED, SIGNED and PROPERLY NOTARIZED Affidavits, including: Non-Conviction Affidavit, Non-Collusion Affidavit, Campaign Contribution Affidavit, Debt Disclosures Affidavit and E-Verify Affidavit. For the convenience of vendors, all affidavits have been combined into one form entitled PUBLIC WORKS BID AFFIDAVIT. This affidavit must be submitted in its original format, and without material alteration, in order to be compliant and for the bid to be considered responsive. A scanned copy of the completed, signed and properly notarized affidavit may be submitted with the bid, however, the successful bidder must submit the original affidavit in its original format and without material alteration upon contract execution. Failure to comply will result in the bid submission being rejected as non-responsive. The Parish reserves the right to award bid to the next lowest responsive and responsible bidder in this event.

INSTRUCTIONS FOR BIDDERS AND GENERAL CONDITIONS

15. **NON PUBLIC WORK BIDS - Completed, Signed and Properly Notarized Affidavits Required** in conformity with the provisions contained in LSA – RS 38:2224 and Sec 2-923.1 of the Jefferson Parish Code of Ordinances. For bidding purposes, all bidders must submit with bid submission **COMPLETED, SIGNED and PROPERLY NOTARIZED** Affidavits, including: Non-Collusion Affidavit, Debt Disclosures Affidavit and Campaign Contribution Affidavit. For the convenience of vendors, all affidavits have been combined into one form entitled **NON PUBLIC WORKS BID AFFIDAVIT**. This affidavit must be submitted in its original format, and without material alteration, in order to be compliant and for the bid to be considered responsive. A scanned copy of the completed, signed and properly notarized affidavit may be submitted with the bid, however, the successful bidder must submit the original affidavit in its original format and without material alteration upon contract execution. Failure to comply will result in the bid submission being rejected as non-responsive. The Parish reserves the right to award bid to the next lowest responsive and responsible bidder in this event.

16. The ensuing contract for this bid solicitation may be eligible for FEMA reimbursement and/or Federal funding/reimbursement. As such, the referenced appendix will be applicable accordingly and shall be considered a part of the bid documents. All applicable certifications must be duly completed, signed and submitted with bid submission. Failure to submit applicable certifications with bid submission will result in bid rejection.

17. For this project, the Contractor shall not pay any state or local sales or use taxes on materials and equipment which are affixed and made part of the immovable property of the project or which is permanently incorporated in the project (hereinafter referred to as "applicable materials and equipment."). All purchases of applicable materials or equipment shall be made by the contractor on behalf of and as the agent of Jefferson Parish (Owner), a political subdivision of the State of Louisiana. No state and local sales and use taxes are owed on applicable materials and equipment under the provisions of Act 1029 of the 1991 Regular Session - Louisiana Revised Statute 47:301(8)(c). Owner will furnish to contractor a certificate form which certifies that Owner is not required to pay such state or local sales and use taxes, and contractor shall furnish a copy of such certificate to all vendors or suppliers of the applicable materials and equipment, and report to Owner the amount of taxes not incurred.

It shall be the duty of every parish officer, employee, department, agency, special district, board, and commission: and the duty of every contractor, subcontractor, and licensee of the parish, and the duty of every applicant for certification of eligibility for a parish contract or program, to cooperate with the Inspector General in any investigation, audit, inspection, performance review, or hearing pursuant to JPCO 2-155.10(19). By signing this document, every corporation, partnership, or person contracting with PARISH, whether by cooperative endeavor, intergovernmental agreement, bid, proposal, application or solicitation for a parish contract, and every application for certification of eligibility for a parish contract or program, attests that it understands and will abide by all provisions of JPCO 2-155.10.

All Public Work Projects are required to use the Louisiana Uniform Public Work Bid Form

All prices must be held firm unless an escalation provision is requested in this bid. Jefferson Parish will allow one escalation during the term of the contract, which may not exceed the U.S. Bureau of Labor Statistics National Index for all Urban Consumers, unadjusted 12 month figure. The most recently published figure issued at the time an adjustment is requested will be used. A request must be made in writing by the vendor, and the escalation will only be applied to purchases made after the request is made.

Are you requesting an escalation provision?

YES _____ NO X
MAXIMUM ESCALATION PERCENTAGE REQUESTED _____ %

INITIAL BID PRICES WILL REMAIN FIRM THROUGH THE DATE OF _____

For the purposes of comparison of bids when an escalation provision is requested, Jefferson Parish will apply the maximum escalation percentage quoted by the bidder to the period to which it is applied in the bid. The initial price and the escalation will be used to calculate the total bid price. It will be assumed, for comparison of prices only, that an equal amount of material or labor is purchased each month throughout the entire contract.

DELIVERY: FOB JEFFERSON PARISH

INDICATE DELIVERY DATE ON EQUIPMENT AND SUPPLIES _____

LOUISIANA CONTRACTOR'S LICENSE NO.: (if applicable) _____

THIS SECTION MUST BE COMPLETED BY BIDDER:

FIRM NAME: First Responder Equipment and Uniform Distributors, LLC
T/A. A.P.E., Inc. and American Police Equipment, Inc.

ADDRESS: 9015 Airline Highway

CITY, STATE: New Orleans, La. ZIP: 70118

TELEPHONE: (504) 482-6390 FAX: (866) 280-8677

EMAIL ADDRESS: jason@apeinc.us

In the event that addenda are issued with this bid, bidders MUST acknowledge all addenda on the bid form. Bidder must acknowledge receipt of an addendum on the bid form by placing the addendum number as indicated. Failure to acknowledge any addendum on the bid form will result in bid rejection.

Acknowledge Receipt of Addenda: NUMBER: _____

NUMBER: _____

NUMBER: _____

NUMBER: _____

TOTAL PRICE OF ALL BID ITEMS: \$ \$390,249.35

AUTHORIZED SIGNATURE: Jason Comboy

TITLE: President

JASON COMBOY

Printed Name

SIGNING INDICATES YOU HAVE READ AND COMPLY WITH THE INSTRUCTIONS AND CONDITIONS.

NOTE: All bids should be returned with the BID NUMBER and BID OPENING DATE indicated on the outside of the envelope submitted to the Purchasing Department.

INVITATION TO BID FROM JEFFERSON PARISH - continued

BID NO.: 50-00135057

SEALED BID

ITEM NUMBER	QUANTITY	U/M	DESCRIPTION OF ARTICLES	UNIT PRICE QUOTED	TOTALS
			TWO YEAR CONTRACT FOR UNIFORMS, ATHLETIC APPAREL, BADGES, DRESS UNIFORMS, HATS/CAPS, DRESS BELTS, SHOES, NAME TAGS & RANK INSIGNIA FOR THE JEFFERSON PARISH FIRE DEPARTMENT.		
1	150.00	EA	0001 L/S LIGHT TACTICAL SHIRT SIZES: REG XS-5XL & LONG S-3XL, ALL COLORS, PROPPER MODEL #F5312	\$37.90	\$5,685.00
2	50.00	EA	0002 L/S LIGHT TACTICAL SHIRT SIZES: REG XS-4XL & LONG S-3XL, COLOR: WHITE, PROPPER MODEL #F53121M	\$37.90	\$1,895.00
3	250.00	EA	0003 S/S LIGHT TACTICAL SHIRT SIZES: REG XS-5XL, ALL COLORS PROPPER MODEL #F5311	\$36.90	\$9,225.00
4	75.00	EA	0004 S/S LIGHT TACTICAL SHIRT SIZES: REG XS-4XL, COLOR: WHITE PROPPER MODEL #F53111M	\$36.90	\$2,767.50
5	20.00	EA	0005 MEN'S L/S PROPPER ICE POLO SHIRT SIZES: XS-5XL, ALL COLORS W/ EMBROIDERY PROPPER MODEL #F5315	\$57.00	\$1,140.00
6	10.00	EA	0006 MEN'S L/S PROPPER ICE POLO SHIRT SIZES: 6XL-8XL, ALL COLORS W/ EMBROIDERY PROPPER MODEL #F5315	\$60.00	\$600.00
7	25.00	EA	0007 WOMEN'S L/S PROPPER ICE POLO SHIRT SIZES: XS-5XL, ALL COLORS W/ EMBROIDERY PROPPER MODEL #F5357	\$57.00	\$1,425.00
8	75.00	EA	0008 MEN'S S/S PROPPER ICE POLO SHIRT SIZES: XS-5XL, ALL COLORS W/ EMBROIDERY PROPPER MODEL #F5341	\$54.00	\$4,050.00
9	25.00	EA	0009 MEN'S S/S PROPPER ICE POLO SHIRT SIZES: 6XL-8XL, ALL COLORS W/ EMBROIDERY PROPPER MODEL #F5341	\$57.00	\$1,425.00
10	25.00	EA	0010 WOMEN'S S/S PROPPER ICE POLO SHIRT SIZES: XS-4XL, ALL COLORS W/ EMBROIDERY	\$54.00	\$1,350.00

INVITATION TO BID FROM JEFFERSON PARISH - continued

BID NO.: 50-00135057

SEALED BID

ITEM NUMBER	QUANTITY	U/M	DESCRIPTION OF ARTICLES	UNIT PRICE QUOTED	TOTALS
11	40.00	EA	PROPPER MODEL #F5327 0011 S/S BLENDED TACTICAL POLO SHIRT SIZES: XS-XL, COLOR: WHITE W/ EMBROIDERY	\$39.90	\$1,596.00
12	10.00	EA	ATLANTICO TRU-SPEC 24/7 MODEL #4326 0012 S/S BLENDED TACTICAL POLO SHIRT SIZES: 2XL-5XL, COLOR: WHITE W/ EMBROIDERY, ATLANTICO TRU-SPEC 24/7 MODEL #4326	\$44.90	\$449.00
13	55.00	EA	0013 L/S MOCK TURTLENECK SIZES: S-4XL, COLOR: NAVY W/ EMBROIDERY, PUDALA MODEL #102	\$12.90	\$709.50
14	5.00	EA	0014 L/S MOCK TURTLENECK SIZES: 5XL-7XL, COLOR: NAVY W/ EMBROIDERY, PUDALA MODEL #102	\$15.90	\$79.50
15	75.00	EA	0016 MEN'S L/S WHITE DRESS SHIRT SIZES: 14X31-17.5X31; 16.5X32-17.5X32; 14X34-14.5X34; 14X35-16.5X35; 14X36-15.5X36 SOUTHEASTERN CODE 3 MODEL #3103	\$36.60	\$2,745.00
16	75.00	EA	0018 MEN'S L/S WHITE DRESS SHIRT SIZES: 14X32-15.5X32; 18X32-18.5X32; 14X33-17.5X33; 19.5X33-20X33; 15X34-17.5X34; 17X35-17.5X35 SOUTHEASTERN CODE 3 MODEL #3103	\$37.10	\$2,782.50
17	75.00	EA	0017 MEN'S L/S WHITE DRESS SHIRT SIZES: 18X33-19X33; 18X34-18.5X34; 18X35-19X35; 14X37-17.5X37 SOUTHEASTERN CODE 3 MODEL #3103	\$40.20	\$3,015.00
18	50.00	EA	0018 MEN'S L/S WHITE DRESS SHIRT SIZES: 19X34-20X34; 19.5X35-20X35 SOUTHEASTERN CODE 3 MODEL #3103	\$42.20	\$2,110.00
19	25.00	EA	0019 MEN'S L/S WHITE DRESS SHIRT SIZES: 16X36-19.5X36 SOUTHEASTERN CODE 3 MODEL #3103	\$40.20	\$1,005.00

INVITATION TO BID FROM JEFFERSON PARISH - continued

BID NO.: 50-00135057

SEALED BID

ITEM NUMBER	QUANTITY	U/M	DESCRIPTION OF ARTICLES	UNIT PRICE QUOTED	TOTALS
20	15.00	EA	0020 MEN'S L/S WHITE DRESS SHIRT SIZES: 21X35-22X35; 20X36 SOUTHEASTERN CODE 3 MODEL #3103	\$47.33	\$709.95
21	15.00	EA	0021 MEN'S L/S WHITE DRESS SHIRT SIZES: 18X37-19X37 SOUTHEASTERN CODE 3 MODEL #3103	\$40.20	\$603.00
22	10.00	EA	0022 MEN'S L/S WHITE DRESS SHIRT SIZES: 19.5X37-20X37 SOUTHEASTERN CODE 3 MODEL #3103	\$40.20	\$402.00
23	5.00	EA	0023 MEN'S L/S WHITE DRESS SHIRT SIZES: 21X37-22X37 SOUTHEASTERN CODE 3 MODEL #3103	\$47.33	\$236.65
24	25.00	EA	0024 WOMEN'S L/S WHITE DRESS SHIRT SIZES: BUST 30-50, SLEEVE 30-33 SOUTHEASTERN CODE 3 MODEL #L3103	\$36.90	\$922.50
25	50.00	EA	0025 MEN'S POLY L/S WHITE DRESS SHIRT SIZES: 14.5X32-16.5X32; 15.5X36-16.5X35 FLYING CROSS MODEL #35W78	\$38.00	\$1,900.00
26	50.00	EA	0026 MEN'S POLY L/S WHITE DRESS SHIRT SIZES: 15X33-18.5X33; 15X34-20X34; 15.5X35-18.5X36; 17X36-20X36; 18.5X37-20X37 FLYING CROSS MODEL #35W78	\$40.00	\$2,000.00
27	25.00	EA	0027 WOMEN'S POLY L/S WHITE DRESS SHIRT SIZES: 28-52 FLYING CROSS MODEL #126R78	\$38.00	\$950.00
28	75.00	EA	0028 MEN'S L/S LIGHT BLUE DRESS SHIRT SIZES: 14X31-17.5X31; 16.5X32-17.5X32; 14X34-14.5X34; 14X35-16.5X35; 14X36-15.5X36 SOUTHEASTERN CODE 3 MODEL #3102	\$35.60	\$2,670.00
29	75.00	EA	0029 MEN'S L/S LIGHT BLUE DRESS SHIRT SIZES: 14X32-15.5X32; 18X32-18.5X32;	\$35.60	\$2,670.00

INVITATION TO BID FROM JEFFERSON PARISH - continued

BID NO.: 50-00135057

SEALED BID

ITEM NUMBER	QUANTITY	U/M	DESCRIPTION OF ARTICLES	UNIT PRICE QUOTED	TOTALS
30	50.00	EA	14X33-17.5X33; 19.5X33-20X33; 15X34- 17.5X34; 17X36-17.5X35 SOUTHEASTERN CODE 3 MODEL #3102 0030 MEN'S L/S LIGHT BLUE DRESS SHIRT SIZES: 18X33-19X33; 18X34-18.5X34; 18X35-19X35; 14X37-17.5X37 SOUTHEASTERN CODE 3 MODEL #3102	\$37.60	\$1,880.00
31	30.00	EA	0031 MEN'S L/S LIGHT BLUE DRESS SHIRT SIZES: 19X34-20X34; 19.5X35-20X35 SOUTHEASTERN CODE 3 MODEL #3102	\$40.60	\$1,218.00
32	20.00	EA	0032 MEN'S L/S LIGHT BLUE DRESS SHIRT SIZES: 16X36-19.5X36 SOUTHEASTERN CODE 3 MODEL #3102	\$40.60	\$812.00
33	20.00	EA	0033 MEN'S L/S LIGHT BLUE DRESS SHIRT SIZES: 21X36-22X35; 20X36 SOUTHEASTERN CODE 3 MODEL #3102	\$42.60	\$852.00
34	10.00	EA	0034 MEN'S L/S LIGHT BLUE DRESS SHIRT SIZES: 18X37-19X37 SOUTHEASTERN CODE 3 MODEL #3102	\$40.60	\$406.00
35	5.00	EA	0035 MEN'S L/S LIGHT BLUE DRESS SHIRT SIZES: 19.5X37-20X37 SOUTHEASTERN CODE 3 MODEL #3102	\$42.60	\$213.00
36	10.00	EA	0036 MEN'S L/S LIGHT BLUE DRESS SHIRT SIZES: 21X37-22X37 SOUTHEASTERN CODE 3 MODEL #3102	\$44.60	\$446.00
37	5.00	EA	0037 WOMEN'S L/S LIGHT BLUE DRESS SHIRT SIZES: BUST 30-50; SLEEVE 30-33 SOUTHEASTERN CODE 3 MODEL #L3102	\$35.60	\$178.00
38	80.00	EA	0038 MEN'S POLY L/S LIGHT BLUE DRESS SHIRT, SIZES: 14.5X32-16.5X32; 15.5X36-16.5X36 FLYING CROSS MODEL #33W78Z	\$41.60	\$3,328.00
39	2.00	EA	0039 MEN'S POLY L/S LIGHT BLUE DRESS SHIRT, SIZES: 15X33-18.5X33;	\$41.60	\$83.20

INVITATION TO BID FROM JEFFERSON PARISH - continued

BID NO.: 50-00135057

SEALED BID

ITEM NUMBER	QUANTITY	U/M	DESCRIPTION OF ARTICLES	UNIT PRICE QUOTED	TOTALS
40	5.00	EA	15X34-20X34; 15.5X35-18.5X35; 17X36-20X36; 18.5X37-20X37 FLYING CROSS MODEL #33W78Z 0040 WOMEN'S POLY L/S LIGHT BLUE DRESS SHIRT, SIZES: 28-52 FLYING CROSS MODEL #126R78	\$41.60	\$208.00
41	100.00	EA	0041 MEN'S S/S WHITE DRESS SHIRT SIZES: S-XL SOUTHEASTERN CODE 3 MODEL #3203	\$36.60	\$3,660.00
42	100.00	EA	0042 MEN'S S/S WHITE DRESS SHIRT SIZES: 2XL-3XL SOUTHEASTERN CODE 3 MODEL #3203	\$40.60	\$4,060.00
43	10.00	EA	0043 MEN'S S/S WHITE DRESS SHIRT SIZE: 4XL SOUTHEASTERN CODE 3 MODEL #3203	\$44.60	\$446.00
44	5.00	EA	0044 MEN'S S/S WHITE DRESS SHIRT SIZE: 5XL SOUTHEASTERN CODE 3 MODEL #3203	\$44.60	\$223.00
45	25.00	EA	0045 WOMEN'S S/S WHITE DRESS SHIRT SIZES: BUST 30-40 SOUTHEASTERN CODE 3 MODEL #L3203	\$36.60	\$915.00
46	15.00	EA	0046 WOMEN'S S/S WHITE DRESS SHIRT SIZES: BUST 42-46 SOUTHEASTERN CODE 3 MODEL #L3203	\$40.60	\$609.00
47	5.00	EA	0047 WOMEN'S S/S WHITE DRESS SHIRT SIZES: BUST 48-50 SOUTHEASTERN CODE 3 MODEL #L3203	\$44.60	\$223.00
48	75.00	EA	0048 MEN'S POLY S/S WHITE DRESS SHIRT SIZES: 14.5-18.5 FLYING CROSS MODEL #85R78	\$36.60	\$2,745.00
49	30.00	EA	0049 MEN'S POLY S/S WHITE DRESS SHIRT SIZES: 19-23	\$38.60	\$1,158.00

INVITATION TO BID FROM JEFFERSON PARISH - continued

BID NO.: 50-00135057

SEALED BID

ITEM NUMBER	QUANTITY	U/M	DESCRIPTION OF ARTICLES	UNIT PRICE QUOTED	TOTALS
			FLYING CROSS MODEL #85R78		
50	20.00	EA	0050 WOMEN'S POLY S/S WHITE DRESS SHIRT SIZES: 28-54	\$36.60	\$732.00
			FLYING CROSS MODEL #176R78		
51	80.00	EA	0051 MEN'S S/S LIGHT BLUE DRESS SHIRT SIZES: S-XL	\$35.60	\$2,848.00
			SOUTHEASTERN CODE 3 MODEL #3202		
52	80.00	EA	0052 MEN'S S/S LIGHT BLUE DRESS SHIRT SIZES: 2XL-3XL	\$36.60	\$2,928.00
			SOUTHEASTERN CODE 3 MODEL #3202		
53	25.00	EA	0053 MEN'S S/S LIGHT BLUE DRESS SHIRT SIZE: 4XL	\$38.60	\$965.00
			SOUTHEASTERN CODE 3 MODEL #3202		
54	10.00	EA	0054 MEN'S S/S LIGHT BLUE DRESS SHIRT SIZE: 5XL	\$40.60	\$406.00
			SOUTHEASTERN CODE 3 MODEL #3202		
55	5.00	EA	0055 WOMEN'S S/S LIGHT BLUE DRESS SHIRT SIZES: BUST 30-40	\$36.60	\$183.00
			SOUTHEASTERN CODE 3 MODEL #L3202		
56	5.00	EA	0056 WOMEN'S S/S LIGHT BLUE DRESS SHIRT SIZES: BUST 42-46	\$38.60	\$193.00
			SOUTHEASTERN CODE 3 MODEL #L3202		
57	5.00	EA	0057 WOMEN'S S/S LIGHT BLUE DRESS SHIRT SIZES: BUST 48-50	\$40.60	\$203.00
			SOUTHEASTERN CODE 3 MODEL #L3202		
58	100.00	EA	0058 MEN'S POLY S/S LIGHT BLUE DRESS SHIRT, SIZES: 14.5-18.5	\$36.60	\$3,660.00
			FLYING CROSS MODEL #85R78		
59	100.00	EA	0059 MEN'S POLY S/S LIGHT BLUE DRESS SHIRT, SIZES: 19-23	\$36.60	\$3,660.00
			FLYING CROSS MODEL #85R78		

INVITATION TO BID FROM JEFFERSON PARISH - continued

BID NO.: 50-00135057

SEALED BID

ITEM NUMBER	QUANTITY	U/M	DESCRIPTION OF ARTICLES	UNIT PRICE QUOTED	TOTALS
60	10.00	EA	0060 WOMEN'S POLY S/S LIGHT BLUE DRESS SHIRT, SIZES: 28-54 FLYING CROSS MODEL #176R78	\$36.60	\$366.00
61	10.00	EA	0061 MEN'S L/S NOMEX STATION WEAR SHIRT SIZES: S-2XL, COLOR: NAVY FLYING CROSS MODEL #9820	\$104.90	\$1,049.00
62	10.00	EA	0062 MEN'S L/S NOMEX STATION WEAR SHIRT SIZES: 3XL-6XL, COLOR: NAVY FLYING CROSS MODEL #9820	\$104.90	\$1,049.00
63	5.00	EA	0063 WOMEN'S L/S NOMEX STATION WEAR SHIRT, SIZES: BUST 28-42, COLOR: NAVY FLYING CROSS MODEL #9830	\$104.90	\$524.50
64	5.00	EA	0064 WOMEN'S L/S NOMEX STATION WEAR SHIRT, SIZES: BUST 44-52, COLOR: NAVY FLYING CROSS MODEL #9830	\$104.90	\$524.50
65	10.00	EA	0065 MEN'S S/S NOMEX STATION WEAR SHIRT SIZES: S-2XL, COLOR: NAVY FLYING CROSS MODEL #9800	\$85.90	\$859.00
66	10.00	EA	0066 MEN'S S/S NOMEX STATION WEAR SHIRT SIZES: 3XL-6XL, COLOR: NAVY FLYING CROSS MODEL #9800	\$85.90	\$859.00
67	5.00	EA	0067 WOMEN'S S/S NOMEX STATION WEAR SHIRT, SIZES: BUST 28-42, COLOR: NAVY FLYING CROSS MODEL #9810	\$85.90	\$429.50
68	5.00	EA	0068 WOMEN'S S/S NOMEX STATION WEAR SHIRT, SIZES: BUST 44-52, COLOR: NAVY FLYING CROSS MODEL #9810	\$85.90	\$429.50
69	125.00	EA	0069 DRY BLEND CREWNECK SWEATSHIRT SIZES: S-XL, COLOR: NAVY W/ LOGO GILDAN MODEL #12000	\$14.90	\$1,862.50
70	125.00	EA	0070 DRY BLEND CREWNECK SWEATSHIRT SIZES: 2XL-3XL, COLOR: NAVY W/ LOGO	\$18.90	\$2,362.50

INVITATION TO BID FROM JEFFERSON PARISH - continued

BID NO.: 50-00135057

SEALED BID

ITEM NUMBER	QUANTITY	U/M	DESCRIPTION OF ARTICLES	UNIT PRICE QUOTED	TOTALS
71	125.00	EA	GILDAN MODEL #12000 0071 DRY BLEND CREWNECK SWEATSHIRT SIZES: S-XL, COLOR: RED W/ LOGO	\$14.80	\$1,850.00
72	125.00	EA	GILDAN MODEL #12000 0072 DRY BLEND CREWNECK SWEATSHIRT SIZES: 2XL-3XL, COLOR: RED W/ LOGO	\$20.00	\$2,500.00
73	750.00	EA	GILDAN MODEL #12000 0073 S/S 100% COTTON T-SHIRT SIZES: S-XL, COLOR: NAVY W/ LOGO	\$9.90	\$7,425.00
74	750.00	EA	GILDAN MODEL #2000 0074 S/S 100% COTTON T-SHIRT SIZE: 2XL, COLOR: NAVY W/ LOGO	\$13.90	\$10,425.00
75	250.00	EA	GILDAN MODEL #2000 0075 S/S 100% COTTON T-SHIRT SIZES: 3XL-5XL, COLOR: NAVY W/ LOGO	\$15.90	\$3,975.00
76	250.00	EA	GILDAN MODEL #2000 0076 L/S 100% COTTON T-SHIRT SIZES: S-XL, COLOR: NAVY W/ LOGO	\$13.10	\$3,275.00
77	250.00	EA	GILDAN MODEL #2400 0077 L/S 100% COTTON T-SHIRT SIZE: 2XL, COLOR: NAVY W/ LOGO	\$15.40	\$3,850.00
78	150.00	EA	GILDAN MODEL #2400 0078 L/S 100% COTTON T-SHIRT SIZES: 3XL-5XL, COLOR: NAVY W/ LOGO	\$19.90	\$2,985.00
79	250.00	EA	GILDAN MODEL #2400 0079 S/S COTTON/POLY BLEND T-SHIRT SIZES: S-XL, COLOR: RED W/ LOGO	\$9.00	\$2,250.00
80	250.00	EA	GILDAN MODEL #8000 0080 S/S COTTON/POLY BLEND T-SHIRT SIZE: 2XL, COLOR: RED W/ LOGO	\$10.90	\$2,725.00
			GILDAN MODEL #8000		

INVITATION TO BID FROM JEFFERSON PARISH - continued

BID NO.: 50-00135057

SEALED BID

ITEM NUMBER	QUANTITY	U/M	DESCRIPTION OF ARTICLES	UNIT PRICE QUOTED	TOTALS
81	150.00	EA	0081 S/S COTTON/POLY BLEND T-SHIRT SIZES: 3XL-6XL, COLOR: RED W/ LOGO GILDAN MODEL #8000	\$12.50	\$1,875.00
82	150.00	EA	0082 L/S COTTON/POLY BLEND T-SHIRT SIZES: S-XL, COLOR: RED W/ LOGO GILDAN MODEL #8400	\$12.00	\$1,800.00
83	100.00	EA	0083 L/S COTTON/POLY BLEND T-SHIRT SIZES: 2XL-3XL, COLOR: RED W/ LOGO GILDAN MODEL #8400	\$15.00	\$1,500.00
84	150.00	EA	0084 S/S DRI-FIT WORKOUT T-SHIRT SIZES: XS-XL, COLOR: RED W/ LOGO SPORT-TEK MODEL #K468	\$15.00	\$2,250.00
85	100.00	EA	0085 S/S DRI-FIT WORKOUT T-SHIRT SIZE: 2XL, COLOR: RED W/ LOGO SPORT-TEK MODEL #K468	\$17.00	\$1,700.00
86	75.00	EA	0086 S/S DRI-FIT WORKOUT T-SHIRT SIZE: 3XL, COLOR: RED W/ LOGO SPORT-TEK MODEL #K468	\$18.00	\$1,350.00
87	50.00	EA	0087 S/S DRI-FIT WORKOUT T-SHIRT SIZE: 4XL, COLOR: RED W/ LOGO SPORT-TEK MODEL #K468	\$19.00	\$950.00
88	150.00	EA	0088 L/S DRI-FIT WORKOUT T-SHIRT SIZES: XS-XL, COLOR: RED W/ LOGO SPORT-TEK MODEL #ST350LS	\$13.70	\$2,055.00
89	100.00	EA	0089 L/S DRI-FIT WORKOUT T-SHIRT SIZE: 2XL, COLOR: RED W/ LOGO SPORT-TEK MODEL # ST350LS	\$15.00	\$1,500.00
90	75.00	EA	0090 L/S DRI-FIT WORKOUT T-SHIRT SIZE: 3XL, COLOR: RED W/ LOGO SPORT-TEK MODEL # ST350LS	\$16.90	\$1,267.50
91	50.00	EA	0091 L/S DRI-FIT WORKOUT T-SHIRT SIZE: 4XL, COLOR: RED W/ LOGO	\$18.20	\$910.00

INVITATION TO BID FROM JEFFERSON PARISH - continued

BID NO.: 50-00135057

SEALED BID

ITEM NUMBER	QUANTITY	U/M	DESCRIPTION OF ARTICLES	UNIT PRICE QUOTED	TOTALS
92	50.00	EA	SPORT-TEK MODEL # ST350LS 0092 S/S 100% COTTON TRAINING T-SHIRT SIZES: S-XL, COLOR: ORANGE W/ LOGO	\$11.00	\$550.00
93	50.00	EA	GILDAN MODEL #2000 0093 S/S 100% COTTON TRAINING T-SHIRT SIZE: 2XL, COLOR: ORANGE W/ LOGO	\$12.80	\$640.00
94	25.00	EA	GILDAN MODEL #2000 0094 S/S 100% COTTON TRAINING T-SHIRT SIZES: 3XL-5XL, COLOR: ORANGE W/ LOGO,	\$14.00	\$350.00
95	25.00	EA	GILDAN MODEL #2000 0095 L/S 100% COTTON TRAINING T-SHIRT SIZES: S-XL, COLOR: ORANGE W/ LOGO	\$12.80	\$320.00
96	15.00	EA	GILDAN MODEL #2400 0096 L/S 100% COTTON TRAINING T-SHIRT SIZE: 2XL, COLOR: ORANGE W/ LOGO	\$15.00	\$225.00
97	10.00	EA	GILDAN MODEL #2400 0097 L/S 100% COTTON TRAINING T-SHIRT SIZES: 3XL-5XL, COLOR: ORANGE W/ LOGO,	\$16.50	\$165.00
98	500.00	PR	GILDAN MODEL #2400 0098 MEN'S LIGHT TACTICAL PANTS SIZES: 28-56, ALL COLORS	\$33.90	\$16,950.00
99	50.00	PR	PROPPER MODEL #F5252 0099 WOMEN'S LIGHT TACTICAL PANTS SIZES: 2-24, ALL COLORS	\$33.90	\$1,695.00
100	200.00	PR	PROPPER MODEL #529550 0100 MEN'S LIGHT TACTICAL SHORTS SIZES: 28-56, ALL COLORS	\$31.90	\$6,380.00
101	150.00	PR	PROPPER MODEL #F5253 0101 MEN'S STATION WEAR PANTS SIZES: 28-56, COLOR: NAVY	\$44.60	\$6,690.00
			LION MODEL #W-0150NV-10		

INVITATION TO BID FROM JEFFERSON PARISH - continued

BID NO.: 50-00135057

SEALED BID

ITEM NUMBER	QUANTITY	U/M	DESCRIPTION OF ARTICLES	UNIT PRICE QUOTED	TOTALS
102	20.00	PR	0102 WOMEN'S STATION WEAR PANTS SIZES: 2-30, COLOR: NAVY LION MODEL #7121-10	\$44.60	\$892.00
103	250.00	PR	0103 MEN'S DAILY DRESS UNIFORM PANTS SIZES: 29-60, COLOR: NAVY FLYING CROSS MODEL #TR070	\$37.90	\$9,475.00
104	25.00	PR	0104 WOMEN'S DAILY DRESS UNIFORM PANTS SIZES: 2-26, COLOR: NAVY FLYING CROSS MODEL #TR070WT	\$37.90	\$947.50
105	100.00	PR	0105 CLASS A DRESS UNIFORM PANTS ALL SIZES, COLOR: LAPD NAVY FLYING CROSS MODEL# 38200	\$39.90	\$3,990.00
106	10.00	PR	0106 MEN'S NOMEX STATION PANTS SIZES: 28-54, COLOR: NAVY FLYING CROSS MODEL# 98200	\$129.90	\$1,299.00
107	10.00	PR	0107 WOMEN'S NOMEX STATION PANTS SIZES: 4-28, COLOR: NAVY FLYING CROSS MODEL# 98250	\$129.90	\$1,299.00
108	10.00	PR	0108 MEN'S NOMEX CARGO PANTS SIZES: 28-56, COLOR: NAVY FLYING CROSS MODEL# V98300	\$140.90	\$1,409.00
109	10.00	PR	0109 WOMEN'S NOMEX CARGO PANTS SIZES: 2-26 FLYING CROSS MODEL# V98300W	\$140.90	\$1,409.00
110	75.00	PR	0110 WORKOUT SHORTS W/ POCKETS SIZES: XS-XL, COLOR: SILVER W/ LOGO SPORT-TEK MODEL #ST312	\$17.90	\$1,342.50
111	25.00	PR	0111 WORKOUT SHORTS W/ POCKETS SIZE: 2XL, COLOR: SILVER W/ LOGO SPORT-TEK MODEL #ST312	\$18.90	\$472.50
112	15.00	PR	0112 WORKOUT SHORTS W/ POCKETS SIZE: 3XL, COLOR: SILVER W/ LOGO	\$20.90	\$313.50

INVITATION TO BID FROM JEFFERSON PARISH - continued

BID NO.: 50-00135057

SEALED BID

ITEM NUMBER	QUANTITY	U/M	DESCRIPTION OF ARTICLES	UNIT PRICE QUOTED	TOTALS
113	10.00	PR	SPORT-TEK MODEL #ST312 0113 WORKOUT SHORTS W/ POCKETS SIZE: 4XL, COLOR: SILVER W/ LOGO	\$22.90	\$229.00
114	50.00	PR	SPORT-TEK MODEL #ST312 0114 COTTON/POLY BLEND SWEATPANTS SIZES: S-XL, COLOR: NAVY W/ LOGO	\$17.80	\$890.00
115	15.00	PR	GILDAN MODEL #18300 0115 COTTON/POLY BLEND SWEATPANTS SIZE: 2XL, COLOR: NAVY W/ LOGO	\$20.80	\$312.00
116	10.00	PR	GILDAN MODEL #18300 0116 COTTON/POLY BLEND SWEATPANTS SIZES: 3XL-5XL, COLOR: NAVY W/ LOGO	\$23.90	\$239.00
117	50.00	PR	GILDAN MODEL #18300 0117 COTTON/POLY BLEND SWEATPANTS SIZES: S-XL, COLOR: DARK GREY W/ LOGO	\$19.10	\$955.00
118	15.00	PR	GILDAN MODEL #18300 0118 COTTON/POLY BLEND SWEATPANTS SIZE: 2XL, COLOR: DARK GREY W/ LOGO	\$22.10	\$331.50
119	10.00	PR	GILDAN MODEL #18300 0119 COTTON/POLY BLEND SWEATPANTS SIZES: 3XL-5XL, COLOR: DARK GREY W/ LOGO	\$25.20	\$252.00
120	50.00	PR	GILDAN MODEL #18300 0120 MEN'S 100% POLYESTER WIND PANTS SIZES: XS-XL, COLOR: GREY W/ LOGO	\$23.90	\$1,195.00
121	15.00	PR	SPORT-TEK MODEL #PST74 0121 MEN'S 100% POLYESTER WIND PANTS SIZE: 2XL, COLOR: GREY W/ LOGO	\$24.90	\$373.50
122	10.00	PR	SPORT-TEK MODEL #PST74 0122 MEN'S 100% POLYESTER WIND PANTS SIZE: 3XL, COLOR: GREY W/ LOGO	\$29.90	\$299.00
			SPORT-TEK MODEL #PST74		

INVITATION TO BID FROM JEFFERSON PARISH - continued

BID NO.: 50-00135057

SEALED BID

ITEM NUMBER	QUANTITY	U/M	DESCRIPTION OF ARTICLES	UNIT PRICE QUOTED	TOTALS
123	5.00	PR	0123 MEN'S 100% POLYESTER WIND PANTS SIZE: 4XL, COLOR: GREY W/ LOGO SPORT-TEK MODEL #PST74	\$31.90	\$159.50
124	100.00	EA	0124 THRILLER SX 5-IN-1 JACKET SYSTEM ALL SIZES, COLOR: NAVY GERBER MODEL #71DX1/L	\$169.90	\$16,990.00
125	50.00	EA	0125 SOFT SHELL JACKET/LINER ALL SIZES, COLOR: NAVY GERBER MODEL #51S1 WARRIOR JACKET	\$74.90	\$3,745.00
126	75.00	EA	0126 JOB SHIRT, HALF ZIP SIZES: S-2XL, COLOR: DARK NAVY PREMIER DON-RITE MODEL #JSV	\$49.90	\$3,742.50
127	12.00	EA	0127 JOB SHIRT, HALF ZIP SIZE: 3XL, COLOR: DARK NAVY PREMIER DON-RITE MODEL #JSV	\$50.90	\$610.80
128	8.00	EA	0128 JOB SHIRT, HALF ZIP SIZE: 4XL, COLOR: DARK NAVY PREMIER DON-RITE MODEL #JSV	\$52.90	\$423.20
129	20.00	EA	0129 FLEECE TECH SWEATER, FULL ZIP ALL SIZES, COLOR: NAVY PROPPER MODEL# F5437	\$45.90	\$918.00
130	50.00	EA	0130 FLANNEL-LINED WORK JACKET SIZES: XS-XL, COLOR: NAVY CORNERSTONE MODEL #CSJ40	\$74.50	\$3,725.00
131	25.00	EA	0131 FLANNEL-LINED WORK JACKET SIZE: 2XL, COLOR: NAVY CORNERSTONE MODEL #CSJ40	\$77.60	\$1,940.00
132	15.00	EA	0132 FLANNEL-LINED WORK JACKET SIZE: 3XL, COLOR: NAVY CORNERSTONE MODEL #CSJ40	\$79.60	\$1,194.00
133	15.00	EA	0133 FLANNEL-LINED WORK JACKET SIZE: 4XL, COLOR: NAVY	\$80.60	\$1,209.00

INVITATION TO BID FROM JEFFERSON PARISH - continued

BID NO.: 50-00135057

SEALED BID

ITEM NUMBER	QUANTITY	U/M	DESCRIPTION OF ARTICLES	UNIT PRICE QUOTED	TOTALS
134	2.00	EA	CORNERSTONE MODEL #CSJ40 0134 FLANNEL-LINED WORK JACKET SIZE: 5XL, COLOR: NAVY	\$81.60	\$163.20
135	2.00	EA	CORNERSTONE MODEL #CSJ40 0135 FLANNEL-LINED WORK JACKET SIZE: 6XL, COLOR: NAVY	\$83.10	\$166.20
136	150.00	EA	CORNERSTONE MODEL #CSJ40 0136 THE BRAVEST QUILTED JACKET ALL SIZES, COLOR: NAVY	\$61.00	\$9,150.00
137	5.00	EA	GAME SPORTSWEAR MODEL #1221-J 0137 CARDIGAN SWEATER W/ POCKETS SIZES: XS-XL, ALL COLORS	\$56.00	\$280.00
138	5.00	EA	COMBEX MODEL #4018 0138 CARDIGAN SWEATER W/ POCKETS SIZE: 2XL, ALL COLORS	\$56.00	\$280.00
139	30.00	EA	COMBEX MODEL #4018 0140 CLASS A DRESS UNIFORM COAT SIZES: 36S-50S; 32R-50R; 36L-50L, COLOR: LAPD NAVY, FLYING CROSS MODEL #38804	\$134.90	\$4,047.00
140	15.00	EA	0141 CLASS A DRESS UNIFORM COAT SIZES: 52R-54R; 52L-54L, COLOR: LAPD NAVY, FLYING CROSS MODEL #38804	\$147.60	\$2,214.00
141	10.00	EA	0142 CLASS A DRESS UNIFORM COAT SIZES: 56R-58R; 56L, COLOR: LAPD NAVY FLYING CROSS MODEL #38804	\$160.90	\$1,609.00
142	5.00	EA	0143 CLASS A DRESS UNIFORM COAT SIZES: 60R, COLOR: LAPD NAVY FLYING CROSS MODEL #38804	\$173.90	\$869.50
143	100.00	EA	0144 TACTICAL DUTY BELT SIZES: 28-58, ALL COLORS	\$7.10	\$710.00

INVITATION TO BID FROM JEFFERSON PARISH - continued

BID NO.: 50-00135057

SEALED BID

ITEM NUMBER	QUANTITY	U/M	DESCRIPTION OF ARTICLES	UNIT PRICE QUOTED	TOTALS
144	75.00	EA	PROPPER MODEL #F5603 0145 DRESS UNIFORM LEATHER BELT W/ VELCRO, SIZES: XS-4XL, COLOR: BLACK	\$23.90	\$1,792.50
145	75.00	EA	DUTYMAN MODEL #5111 0146 DRESS UNIFORM LEATHER BELT W/ BUCKLE, SIZES: 26-60, COLOR: BLACK	\$23.90	\$1,792.50
146	55.00	EA	DUTYMAN MODEL #1611 0147 KNIT BEANIE CAP W/OUT CUFF ONE SIZE FITS ALL, COLOR: NAVY	\$11.90	\$654.50
147	75.00	EA	FLEXFIT MODEL #1500KC 0148 KNIT BEANIE CAP W/ CUFF ONE SIZE FITS ALL, COLOR: NAVY	\$11.90	\$892.50
148	150.00	EA	FLEXFIT MODEL#1501KC 0149 SUMMER MESH BASEBALL CAP ONE SIZE FITS ALL, COLOR: DARK NAVY	\$17.90	\$2,685.00
149	30.00	EA	OR WHITE, FLEXFIT MODEL #6777 0150 SUMMER BASEBALL CAP, CHIEF OFFICERS ONE SIZE FITS ALL, COLOR: DARK NAVY	\$20.90	\$627.00
150	150.00	EA	OR WHITE W/ SCRAMBLED EGGS ON VISOR IN GOLD, FLEXFIT MODEL #6777 0151 WINTER WOOL BASEBALL CAP SIZES: S/M & L/XL, COLOR: DARK NAVY	\$17.90	\$2,685.00
151	25.00	EA	OR WHITE, FLEXFIT MODEL #6477 0152 WINTER BASEBALL CAP, CHIEF OFFICERS SIZES: S/M & L/XL, COLOR: DARK NAVY	\$20.90	\$522.50
152	15.00	EA	OR WHITE W/ SCRAMBLED EGGS ON VISOR IN GOLD, FLEXFIT MODEL #6477 0153 CHIEF OFFICERS DRESS HAT ALL SIZES, MIDWAY CAP COMPANY	\$91.00	\$13,650.00
153	25.00	EA	DELUXE BELL CROWN STYLE CAP 0154 CAPTAINS & EQUIVALENT DRESS HAT ALL SIZES, MIDWAY CAP COMPANY	\$67.20	\$1,680.00

INVITATION TO BID FROM JEFFERSON PARISH - continued

BID NO.: 50-00135057

SEALED BID

ITEM NUMBER	QUANTITY	U/M	DESCRIPTION OF ARTICLES	UNIT PRICE QUOTED	TOTALS
154	15.00	EA	DELUXE BELL CROWN STYLE CAP 0156 OPERATORS & FIREFIGHTERS DRESS HAT ALL SIZES, MIDWAY CAP COMPANY	\$67.20	\$1,008.00
155	75.00	EA	DELUXE BELL CROWN STYLE CAP 0157 CLIP-ON UNIFORM DRESS TIE SIZES: SHORT, REGULAR, LONG, & X-LONG, COLOR 61 - DARK NAVY	\$4.99	\$374.25
156	50.00	PR	0158 MEN'S 8-INCH SIDE ZIP BOOT SIZES: 3M-15M, 3.5W-15W; COLOR: BLACK REEBOK RAPID RESPONSE MODEL #RB8874	\$106.00	\$5,300.00
157	10.00	PR	0159 WOMEN'S 8-INCH SIDE ZIP BOOT SIZES: 5M-11M, 5.5W-11W; COLOR: BLACK REEBOK RAPID RESPONSE MODEL #RB874	\$106.00	\$1,060.00
158	75.00	PR	0160 MEN'S 8-INCH SIDE ZIP BOOT SIZES: 4M-15M, 5W-13W; COLOR: BLACK REEBOK RAPID RESPONSE MODEL #RB8674	\$101.00	\$7,575.00
159	10.00	PR	0161 WOMEN'S 8-INCH SIDE ZIP BOOT SIZES: 6M-12M, 7W-12W; COLOR: BLACK REEBOK RAPID RESPONSE MODEL #RB864	\$101.00	\$1,010.00
160	50.00	PR	0162 MEN'S 8-INCH SLIP-ON BOOT SIZES: 7M-15M, 7W-13W; COLOR: BLACK BATES MODEL #E07004	\$96.00	\$4,800.00
161	50.00	PR	0163 MEN'S PULL-ON OXFORD SIZES: 4M-15M, 6W-15W; COLOR: BLACK THOROGOOD MODEL #834-6520	\$71.50	\$3,575.00
162	50.00	PR	0164 MEN'S LEATHER DUTY OXFORD SIZES: 4M-17M, 7W-15W; COLOR: BLACK BATES MODEL #22233	\$57.50	\$2,875.00
163	50.00	PR	0165 MEN'S HIGH GLOSS DRESS OXFORD SIZES: 7M-17M, 7W-15W; COLOR: BLACK BATES MODEL #E22141	\$61.50	\$3,075.00

INVITATION TO BID FROM JEFFERSON PARISH - continued

BID NO.: 50-00135057

SEALED BID

ITEM NUMBER	QUANTITY	U/M	DESCRIPTION OF ARTICLES	UNIT PRICE QUOTED	TOTALS
164	10.00	PR	0166 WOMEN'S HIGH GLOSS DRESS OXFORD SIZES: 5M-11M, 5W-11W; COLOR: BLACK BATES MODEL #E22741	\$57.50	\$575.00
165	100.00	PR	0167 MEN'S ATHLETIC OXFORD SIZES: 4M-15M, 4W-13W; COLOR: BLACK REEBOK MODEL #RB1100	\$63.00	\$6,300.00
166	2.00	EA	0168 FIRE CHIEF BREAST BADGE SMITH & WARREN F146 GOL-RAY W/ BLUE ENAMEL CENTER: C189BE	\$65.50	\$131.00
167	4.00	EA	0169 DEPUTY CHIEF BREAST BADGE SMITH & WARREN F146 GOL-RAY W/ BLUE ENAMEL CENTER: C187BE	\$65.50	\$262.00
168	6.00	EA	0170 ASSISTANT CHIEF BREAST BADGE SMITH & WARREN F146 GOL-RAY W/ BLUE ENAMEL CENTER: C187BE	\$65.50	\$393.00
169	15.00	EA	0171 DISTRICT CHIEF BREAST BADGE SMITH & WARREN F146 GOL-RAY W/ BLUE ENAMEL CENTER: C177BE	\$65.50	\$982.50
170	25.00	EA	0172 CAPTAIN BREAST BADGE SMITH & WARREN F146 GOL-RAY W/ BLUE ENAMEL CENTER: C183BE	\$65.50	\$1,637.50
171	50.00	EA	0173 LIEUTENANT BREAST BADGE SMITH & WARREN F146 SIL-RAY W/ BLUE ENAMEL CENTER: C181BE	\$60.50	\$3,025.00
172	50.00	EA	0174 OPERATOR BREAST BADGE SMITH & WARREN F146 SIL-RAY W/ BLUE ENAMEL CENTER: C162BBLUEM	\$60.50	\$3,025.00
173	75.00	EA	0175 FIREFIGHTER BREAST BADGE SMITH & WARREN F146 SIL-RAY W/ BLUE ENAMEL CENTER: C193BE	\$60.50	\$4,537.50
174	2.00	EA	0176 FIRE PREVENTION CHIEF BREAST BADGE SMITH & WARREN F146	\$65.50	\$131.00

INVITATION TO BID FROM JEFFERSON PARISH - continued

BID NO.: 50-00135057

SEALED BID

ITEM NUMBER	QUANTITY	U/M	DESCRIPTION OF ARTICLES	UNIT PRICE QUOTED	TOTALS
175	2.00	EA	GOL-RAY W/ BLUE ENAMEL CENTER: C187BE 0177 FIRE EDUCATION OFFICER BREAST BADGE SMITH & WARREN F146	\$65.50	\$131.00
176	8.00	EA	GOL-RAY W/ BLUE ENAMEL CENTER: C193BE 0178 FIRE INSPECTOR BREAST BADGE SMITH & WARREN F146	\$65.50	\$524.00
177	5.00	EA	GOL-RAY W/ BLUE ENAMEL CENTER: LA2M 0179 FIRE INVESTIGATOR BREAST BADGE SMITH & WARREN F146	\$65.50	\$393.00
178	5.00	EA	GOL-RAY W/ BLUE ENAMEL CENTER: C134E 0180 COMMUNICATIONS SUPERVISOR BREAST BADGE, SMITH & WARREN F146	\$65.50	\$327.50
179	5.00	EA	GOL-RAY W/ BLUE ENAMEL CENTER: C187BE 0181 COMMUNICATIONS OFFICER II BREAST BADGE, SMITH & WARREN F146	\$65.50	\$327.50
180	10.00	EA	GOL-RAY W/ BLUE ENAMEL CENTER: C179BE 0182 COMMUNICATIONS OFFICER I BREAST BADGE, SMITH & WARREN F146	\$65.50	\$655.00
181	2.00	EA	GOL-RAY W/ BLUE ENAMEL CENTER: C179BE 0183 SAFETY OFFICER BREAST BADGE SMITH & WARREN F146	\$65.50	\$131.00
182	5.00	EA	GOL-RAY W/ BLUE ENAMEL CENTER: C187BE 0184 FD TRAINING OFFICER BREAST BADGE SMITH & WARREN F146	\$65.50	\$327.50
183	4.00	EA	GOL-RAY W/ BLUE ENAMEL CENTER: C193BE 0185 FIRE TECHNICIAN BREAST BADGE SMITH & WARREN F146	\$65.50	\$262.00
184	1.00	EA	SIL-RAY W/ BLUE ENAMEL CENTER: C193BE 0186 DIRECTOR BREAST BADGE SMITH & WARREN A285_JPFD	\$102.00	\$102.00
			GOL-RAY W/ BLUE ENAMEL CENTER: C189BE		

INVITATION TO BID FROM JEFFERSON PARISH - continued

BID NO.: 50-00135057

SEALED BID

ITEM NUMBER	QUANTITY	U/M	DESCRIPTION OF ARTICLES	UNIT PRICE QUOTED	TOTALS
185	1.00	EA	0187 ASSISTANT DIRECTOR BREAST BADGE SMITH & WARREN A285_JPFD GOL-RAY W/ BLUE ENAMEL CENTER: C187BE	\$102.00	\$102.00
186	1.00	EA	0188 I.T. OFFICER BREAST BADGE SMITH & WARREN A285_JPFD GOL-RAY W/ BLUE ENAMEL CENTER: LA2M	\$102.00	\$102.00
187	2.00	EA	0189 HAZMAT OFFICER BREAST BADGE SMITH & WARREN A285_JPFD GOL-RAY W/ BLUE ENAMEL CENTER: C622M	\$102.00	\$204.00
188	1.00	EA	0190 FS TRAINING OFFICER BREAST BADGE SMITH & WARREN A285_JPFD GOL-RAY W/ BLUE ENAMEL CENTER: C193BE	\$102.00	\$102.00
189	2.00	EA	0191 FIRE CHIEF HAT BADGE SMITH & WARREN C102, GOL-RAY	\$27.90	\$55.80
190	12.00	EA	0192 DEPUTY CHIEF/ASSISTANT CHIEF/FIRE PREVENTION CHIEF/SAFETY OFFICER/ COMMUNICATIONS SUPERVISOR HAT BADGE SMITH & WARREN C103, GOL-RAY	\$27.90	\$334.80
191	12.00	EA	0193 DISTRICT CHIEF HAT BADGE SMITH & WARREN C104, GOL-RAY	\$27.90	\$334.80
192	20.00	EA	0194 CAPTAIN HAT BADGE SMITH & WARREN C110, GOL-RAY	\$27.90	\$558.00
193	30.00	EA	0195 LIEUTENANT HAT BADGE SMITH & WARREN C109, SIL-RAY	\$24.90	\$747.00
194	30.00	EA	0196 OPERATOR HAT BADGE SMITH & WARREN A285_JPF_OP_HAT, SIL-RAY	\$24.90	\$747.00
195	30.00	EA	0197 FIREFIGHTER/FIRE TECHNICIAN HAT BADGE, SMITH & WARREN C192L, SIL-RAY	\$24.90	\$747.00
196	8.00	EA	0198 FIRE EDUCATION OFFICER/FD TRAINING OFFICER HAT BADGE, SMITH & WARREN C192L,	\$27.90	\$223.20

INVITATION TO BID FROM JEFFERSON PARISH - continued

BID NO.: 50-00135057

SEALED BID

ITEM NUMBER	QUANTITY	U/M	DESCRIPTION OF ARTICLES	UNIT PRICE QUOTED	TOTALS
197	6.00	EA	GOL-RAY 0199 FIRE INSPECTOR HAT BADGE SMITH & WARREN A285_LA_PL, GOL-RAY	\$27.90	\$167.40
198	5.00	EA	0200 FIRE INVESTIGATOR HAT BADGE SMITH & WARREN C134PL, GOL-RAY	\$27.90	\$139.50
199	30.00	EA	0201 COMMUNICATIONS OFFICER II/ COMMUNICATIONS OFFICER I HAT BADGE SMITH & WARREN C179PL, GOL-RAY	\$27.90	\$837.00
200	1.00	EA	0202 DIRECTOR HAT BADGE SMITH & WARREN S637 GOL-RAY, CENTER: C189BE	\$68.00	\$68.00
201	1.00	EA	0203 ASSISTANT DIRECTOR HAT BADGE SMITH & WARREN S637 GOL-RAY, CENTER: C187BE	\$68.00	\$68.00
202	1.00	EA	0204 I.T. OFFICER HAT BADGE SMITH & WARREN S637 GOL-RAY, CENTER: LA2M	\$68.00	\$68.00
203	2.00	EA	0205 HAZMAT OFFICER HAT BADGE SMITH & WARREN S637 GOL-RAY, CENTER: C622M	\$68.00	\$136.00
204	2.00	EA	0206 FS TRAINING OFFICER HAT BADGE SMITH & WARREN S637 GOL-RAY, CENTER: C193BE	\$68.00	\$136.00
205	50.00	EA	0207 GOLD NAMEPLATE SMITH & WARREN C558A_1 GOL-RAY W/ BLUE ENAMEL BLOCK LETTERS	\$24.90	\$1,245.00
206	100.00	EA	0208 SILVER NAMEPLATE SMITH & WARREN C558A_1 SIL-RAY W/ BLUE ENAMEL BLOCK LETTERS	\$22.90	\$2,290.00
207	30.00	EA	0209 GOLD TIE TAC PREMIER EMBLEMS P4000	\$4.50	\$135.00

INVITATION TO BID FROM JEFFERSON PARISH - continued

BID NO.: 50-00135057

SEALED BID

ITEM NUMBER	QUANTITY	U/M	DESCRIPTION OF ARTICLES	UNIT PRICE QUOTED	TOTALS
208	30.00	EA	0210 SILVER TIE TAC PREMIER EMBLEMS P4001	\$4.50	\$135.00
209	4.00	PR	0211 FIRE CHIEF COLLAR DEVICE 1 SMITH & WARREN C121S GOL-RAY, FIVE (5) CROSSED BUGLES	\$25.60	\$102.40
210	20.00	PR	0212 DEPUTY CHIEF/ASSISTANT CHIEF/FIRE PREVENTION CHIEF/SAFETY OFFICER/ COMMUNICATIONS SUPERVISOR COLLAR DEVICE 1, SMITH & WARREN C122S GOL-RAY, FOUR (4) CROSSED BUGLES	\$25.60	\$512.00
211	20.00	PR	0213 DISTRICT CHIEF COLLAR DEVICE 1 SMITH & WARREN C119S GOL-RAY, THREE (3) CROSSED BUGLES	\$25.60	\$512.00
212	30.00	PR	0214 CAPTAIN COLLAR DEVICE 1 SMITH & WARREN C118S GOL-RAY, TWO (2) SIDE-BY-SIDE BUGLES	\$25.60	\$768.00
213	50.00	PR	0215 LIEUTENANT COLLAR DEVICE 1 SMITH & WARREN C115S SIL-RAY, ONE (1) BUGLE	\$25.60	\$1,280.00
214	6.00	PR	0216 FIRE EDUCATION OFFICER/TRAINING OFFICER COLLAR DEVICE 2 SMITH & WARREN M1702JPPD GOL-RAY W/ BLUE ENAMEL CENTER: C193BE	\$46.00	\$276.00
215	10.00	PR	0217 FIRE INSPECTOR COLLAR DEVICE 2 SMITH & WARREN M1702JPPD GOL-RAY W/ BLUE ENAMEL CENTER: LA2M	\$46.00	\$460.00
216	10.00	PR	0218 FIRE INVESTIGATOR COLLAR DEVICE 2 SMITH & WARREN M1702JPPD GOL-RAY W/ BLUE ENAMEL CENTER: C134E	\$46.00	\$460.00
217	25.00	PR	0219 COMMUNICATIONS OFFICER II/ COMMUNICATIONS OFFICER II COLLAR	\$46.00	\$1,150.00

INVITATION TO BID FROM JEFFERSON PARISH - continued

BID NO.: 50-00135057

SEALED BID

ITEM NUMBER	QUANTITY	U/M	DESCRIPTION OF ARTICLES	UNIT PRICE QUOTED	TOTALS
218	4.00	PR	DEVICE 2, SMITH & WARREN M1702JFPD GOL-RAY W/ BLUE ENAMEL CENTER: C179BE 0220 HAZMAT OFFICER COLLAR DEVICE 2 SMITH & WARREN M1702JFPD GOL-RAY W/ BLUE ENAMEL CENTER: C622BE	\$46.00	\$184.00
219	3.00	PR	0221 FIRE CHIEF SOFT SHOULDER RANK INSIGNIA, GOLD, FIVE (5) BUGLES	\$20.00	\$60.00
220	20.00	PR	0222 DEPUTY CHIEF/ASSISTANT CHIEF/ SAFETY OFFICER/FIRE PREVENTION CHIEF/ COMMUNICATIONS SUPERVISOR SOFT SHOULDER RANK INSIGNIA GOLD, FOUR (4) BUGLES	\$18.00	\$360.00
221	12.00	PR	0223 DISTRICT CHIEF SOFT SHOULDER RANK INSIGNIA, GOLD, THREE (3) BUGLES	\$18.00	\$216.00
222	75.00	PR	0224 WHITE 88% COTTON GLOVES W/ GRIP & SHIRRED WRIST, SIZES: S-2XL	\$5.00	\$375.00
223	250.00	EA	0225 EMBROIDERY OF JFPD LOGO, NAME, AND RANK ON UNIFORM SHIRTS. LOGO ON LEFT SHOULDER, NAME AND RANK ON RIGHT SHOULDER.	\$18.00	\$4,500.00
224	100.00	EA	0226 APPLICATION OF STRIPES ON SLEEVE OF DRESS COAT BASED ON RANK. STYLE #BNFV-493-12-09174CL, 3/8 INCH NYLON VELLUM BRAID, COLOR #493 ANTIQUE GREY	\$10.00	\$1,000.00
226	75.00	EA	0227 APPLICATION OF STRIPES ON SLEEVE OF DRESS COAT BASED ON RANK. STYLE #BNFV-493-12-09174CL, 3/8" NYLON VELLUM BRAID, COLOR # 96 MILITARY GOLD	\$10.00	\$750.00
226	75.00	EA	0228 REMOVAL OF STRIPES FROM SLEEVE OF DRESS COAT.	\$1.00	\$75.00
227	100.00	EA	0229 APPLICATION OF MALTESE CROSSES YEARS OF SERVICES ONTO THE STRIPES	\$6.00	\$600.00

INVITATION TO BID FROM JEFFERSON PARISH - continued

BID NO.: 50-00135057

SEALED BID

ITEM NUMBER	QUANTITY	U/M	DESCRIPTION OF ARTICLES	UNIT PRICE QUOTED	TOTALS
228	75.00	EA	OF THE DRESS COAT. STYLE # Y/B038-LBT, 3/4" MALTESE CROSS, COLOR: ANTIQUE GREY #493 ON NAVY BLUE TWILL 0230 APPLICATION OF MALTESE CROSSES YEARS OF SERVICES ONTO THE STRIPES	\$6.00	\$450.00
229	25.00	EA	OF THE DRESS COAT. STYLE # Y/B038-LBT, 3/4" MALTESE CROSS, COLOR: MILITARY GOLD #95 ON NAVY BLUE TWILL 0231 REMOVAL OF MALTESE CROSSES FROM THE STRIPES OF THE DRESS COAT.	\$1.00	\$25.00
230	25.00	EA	0232 TAILORING OF CLASS A, B, OR C - FORMAL DRESS UNIFORMS AS NEEDED.	\$4.00	\$100.00
231	150.00	EA	0233 UPDATING OF LIGHT TACTICAL SHIRTS INCLUDES APPLICATION & REMOVAL OF SEWN-ON NAME STRIPS & BADGE TABS	\$4.00	\$600.00
232	12.00	EA	0234 REPLACEMENT PARTS FOR DRESS HAT: GOLD FD BUTTON	\$2.00	\$24.00
233	12.00	EA	0235 REPLACEMENT PARTS FOR DRESS HAT: SILVER FD BUTTON	\$3.00	\$36.00
234	10.00	EA	0236 REPLACEMENT PARTS FOR DRESS HAT: GOLD EXPANSION STRAP	\$12.00	\$120.00
235	20.00	EA	0237 REPLACEMENT PARTS FOR DRESS HAT: SILVER EXPANSION STRAP	\$12.00	\$240.00
236	10.00	EA	0238 REPLACEMENT PARTS FOR DRESS HAT: BLACK STRAP	\$8.00	\$80.00
237	20.00	EA	0239 REPLACEMENT PARTS FOR DRESS HAT: MOURNING STRAP, BLACK W/ RED STRIPE	\$10.00	\$200.00
238	20.00	EA	0240 REPLACEMENT PARTS FOR DRESS HAT: RAIN COVER	\$8.00	\$160.00

CORPORATE RESOLUTION

EXCERPT FROM MINUTES OF MEETING OF THE BOARD OF DIRECTORS OF
First Responder Equipment and Uniform Distributors, LLC T/A A.P.E., Inc. and American Police Equipment, Inc.

INCORPORATED.

AT THE MEETING OF DIRECTORS OF First Responder Equipment and Uniform Distributors, LLC T/A
A.P.E., Inc. and American Police Equipment, Inc.
INCORPORATED, DULY NOTICED AND HELD ON 07/12/2021,
A QUORUM BEING THERE PRESENT, ON MOTION DULY MADE AND SECONDED. IT
WAS:

RESOLVED THAT Jason Comboy, BE AND IS HEREBY
APPOINTED, CONSTITUTED AND DESIGNATED AS AGENT AND ATTORNEY-IN-
FACT OF THE CORPORATION WITH FULL POWER AND AUTHORITY TO ACT ON
BEHALF OF THIS CORPORATION IN ALL NEGOTIATIONS, BIDDING, CONCERNS
AND TRANSACTIONS WITH THE PARISH OF JEFFERSON OR ANY OF ITS AGENCIES,
DEPARTMENTS, EMPLOYEES OR AGENTS, INCLUDING BUT NOT LIMITED TO, THE
EXECUTION OF ALL BIDS, PAPERS, DOCUMENTS, AFFIDAVITS, BONDS, SURETIES,
CONTRACTS AND ACTS AND TO RECEIVE ALL PURCHASE ORDERS AND NOTICES
ISSUED PURSUANT TO THE PROVISIONS OF ANY SUCH BID OR CONTRACT, THIS
CORPORATION HEREBY RATIFYING, APPROVING, CONFIRMING, AND ACCEPTING
EACH AND EVERY SUCH ACT PERFORMED BY SAID AGENT AND ATTORNEY-IN-
FACT.

I HEREBY CERTIFY THE FOREGOING TO BE
A TRUE AND CORRECT COPY OF AN
EXCERPT OF THE MINUTES OF THE ABOVE
DATED MEETING OF THE BOARD OF
DIRECTORS OF SAID CORPORATION, AND
THE SAME HAS NOT BEEN REVOKED OR
RESCINDED.

Jason Comboy

SECRETARY-TREASURER

7/12/2021
DATE

Non-Public Works Bid Affidavit Instructions

- Affidavit is supplied as a courtesy to Affiants, but it is the responsibility of the affiant to insure the affidavit they submit to Jefferson Parish complies, in both form and content, with federal, state and parish laws.
- Affidavit must be signed by an authorized representative of the entity or the affidavit will not be accepted.
- Affidavit must be notarized or the affidavit will not be accepted.
- Notary must sign name, print name, and include bar/notary number, or the affidavit will not be accepted.
- Affiant **MUST** select either A or B when required or the affidavit will not be accepted.
- Affiants who select choice A must include an attachment or the affidavit will not be accepted.
- If both choice A and B are selected, the affidavit will not be accepted.
- Affidavit marked N/A will not be accepted.
- It is the responsibility of the Affiant to submit a new affidavit if any additional campaign contributions are made after the affidavit is executed but prior to the time the council acts on the matter.

Instruction sheet may be omitted when submitting the affidavit

Non-Public Works Bid

AFFIDAVIT

STATE OF Louisiana

PARISH/COUNTY OF Jefferson

BEFORE ME, the undersigned authority, personally came and appeared: JASON

COMBOY, (Affiant) who after being by me duly sworn, deposed and said that
he/she is the fully authorized President ^{First Responder Equipment and Uniform Distributors T/A}
^{A.P.E.U. Inc. and}
^{of American Police Equipment, Inc. (Entity),} LLC

the party who submitted a bid in response to Bid Number 50-0035057, to the Parish of
Jefferson.

Affiant further said:

Campaign Contribution Disclosures

(Choose A or B, if option A is indicated please include the required
attachment):

Choice A ☒

Attached hereto is a list of all campaign contributions, including the date and amount of each contribution, made to current or former elected officials of the Parish of Jefferson by Entity, Affiant, and/or officers, directors and owners, including employees, owning 25% or more of the Entity during the two-year period immediately preceding the date of this affidavit or the current term of the elected official, whichever is greater. Further, Entity, Affiant, and/or Entity Owners have not made any contributions to or in support of current or former members of the Jefferson Parish Council or the Jefferson Parish President through or in the name of another person or legal entity, either directly or indirectly.

Choice B ☐

there are NO campaign contributions made which would require disclosure under Choice A of this section.

Debt Disclosures

(Choose A or B, if option A is indicated please include the required attachment):

Choice A _____ Attached hereto is a list of all debts owed by the affiant to any elected or appointed official of the Parish of Jefferson, and any and all debts owed by any elected or appointed official of the Parish to the Affiant.

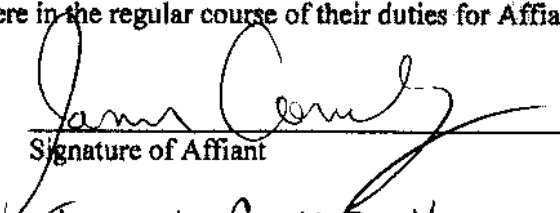
Choice B ✓ _____ There are NO debts which would require disclosure under Choice A of this section.

Affiant further said:

That Affiant has employed no person, corporation, firm, association, or other organization, either directly or indirectly, to secure the public contract under which he received payment, other than persons regularly employed by the Affiant whose services in connection with the construction, alteration or demolition of the public building or project or in securing the public contract were in the regular course of their duties for Affiant; and

[The remainder of this page is intentionally left blank.]

That no part of the contract price received by Affiant was paid or will be paid to any person, corporation, firm, association, or other organization for soliciting the contract, other than the payment of their normal compensation to persons regularly employed by the Affiant whose services in connection with the construction, alteration or demolition of the public building or project were in the regular course of their duties for Affiant.


Signature of Affiant

JASON COMIBOY
Printed Name of Affiant

SWORN AND SUBSCRIBED TO BEFORE ME

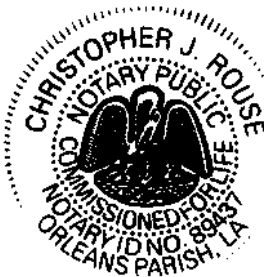
ON THE 13 DAY OF July, 2021.


Notary Public

Christopher J. Rouse
Printed Name of Notary

89437
Notary/Bar Roll Number

My commission expires At Death.



List of Campaign Contributions

First Responder Equipment and Uniform Distributors, LLC T/A A.P.E., Inc. and American Police Equipment, Inc.

1.	06/25/2021	Committee to Elect Joseph Lopinto Sheriff	\$500.00
----	------------	---	----------

Check Search Results

The details presented in this document were requested by the customer. Go to subsequent pages to see check details.

Check Search Results

Checks displayed:	1
Account number:	682563140
Date range:	
Check number(s):	
Amount:	

Post date: 07/08/2021
Amount: \$ 500.00

Account: 682563140
Check Number: 1846

FIRST RESPONDER EQUIPMENT AND UNIFORM DISTRIBUTORS LLC V/A A.P.E., INC. AND AMERICAN POLICE EQUIPMENT, INC. 9515 AMERICA HIGHWAY NEW ORLEANS, LA 70118 (504) 885-8300		CHASE JPMorgan Chase Bank, N.A. 04-132654	1846
PAY TO THE ORDER OF: Committee to Elect Joseph Lopinto Sheriff		\$500.00	
Five Hundred and 00/100		DOLLARS	
MEMO: Committee to Elect Joseph Lopinto Sheriff		VOID AFTER 90 DAYS	
⑈001846⑈ ⑆065400137⑆ 682563140⑆		07/08/2021	

PAY TO THE ORDER OF COMMITTEE TO ELECT JOSEPH LOPINTO 9515 AMERICA HIGHWAY NEW ORLEANS, LA 70118 (504) 885-8300	CHECK NUMBER: 1846 DATE: 07/08/2021	⑈0640000340775⑈ - ⑆065400137⑆
--	--	-------------------------------

STANDARD INSURANCE REQUIREMENTS FOR BIDDING PURPOSES

All required insurance under this bid shall conform to Jefferson Parish Resolution No. 113646 or No. 113647, as applicable. Contractors may not commence any work under any ensuing contract unless and until all required insurance and associated evidentiary requirements thereto have been met, along with any additional specifications contained in the **Invitation to Bid**. Except as where otherwise precluded by law, the Parish Attorney or his designee, with the concurrence of the Director of Risk Management or his designee, may agree on a case-by-case basis, to deviate from Jefferson Parish's standard insurance requirements, as provided in this Section. Vendors requesting deviation therefrom shall submit such requests in writing, along with compelling substantiation, to the Purchasing Department prior to the bid's due date. Any changes to the insurance requirements will be reflected in the bid specifications and addenda. Prior to contract execution and at all times thereafter during the term of such contract, contractors must provide and continuously maintain all coverages as required by the foregoing Resolutions, and the contract documents. Failure to do so shall be grounds for suspension, discontinuation or termination of the contract.

For bidding purposes, bidders must submit with bid submission a current (valid) insurance certificate evidencing the required coverages. Failure to comply will cause bid to be rejected. The current insurance certificate will be used for proof of insurance at time of evaluation. Thereafter, and prior to contract execution, the low bidder will be required to provide final insurance certificates to the Parish which shall name **the Jefferson Parish, its Districts Departments and Agencies under the direction of the Parish President and the Parish Council** as additional insureds regarding negligence by the contractor for the Commercial General Liability and the Comprehensive Automobile Liability policies. Additionally, said certificates should reflect the name of the Parish Department receiving goods and services and reference the respective Jefferson Parish bid number.

JEFFERSON PARISH REQUIRED STANDARD INSURANCE

☒ WORKER'S COMPENSATION INSURANCE

As required by Louisiana State Statute, exception; Employer's Liability, Section B shall be \$1,000,000 per occurrence when Work is to be over water and involves maritime exposures to cover all employees not covered under the State Worker's Compensation Act, otherwise this limit shall be no less than \$500,000 per occurrence.

Note: If your company is not required by law to carry workmen's compensation insurance, i.e. not a Louisiana company, sole employee of the company, then bidders must request a workmen's compensation insurance declaration affidavit prior to the bid opening date. This insurance declaration affidavit must be fully completed, signed, properly notarized and submitted with the bid. A scanned copy may be submitted with the bid; however, the successful bidder must submit the original affidavit in its original format and without material alteration upon contract execution. Failure to comply will result in the bid submission being

rejected as non-responsive. The Parish reserves the right to award bid to the next lowest responsive and responsible bidder in this event.

☒ **COMMERCIAL GENERAL LIABILITY**

Shall provide limits not less than the following: \$1,000,000.00 Combined Single Limit per Occurrence for bodily injury and property damage.

☒ **COMPREHENSIVE AUTOMOBILE LIABILITY**

Bodily injury liability \$1,000,000.00 each person; \$1,000,000.00 each occurrence.
Property Damage Liability \$1,000,000.00 each occurrence.

Note: This category may be omitted if bidders do not/will not utilize company vehicles for the project or do not possess company vehicles. Bidder must request an automobile insurance declaration affidavit prior to the bid opening date. This insurance declaration affidavit must be fully completed, signed, properly notarized and submitted with the bid. A scanned copy of the completed, signed and properly notarized affidavit may be submitted with the bid; however, the successful bidder must submit the original affidavit in its original format and without material alteration upon contract execution. Failure to comply will result in the bid submission being rejected as non-responsive. The Parish reserves the right to award bid to the next lowest responsive and responsible bidder in this event.

DEDUCTIBLES - The Parish Attorney with concurrence of the Director of Risk Management have waived the deductible section of the Terms and Conditions for all Invitations to Bid, until further notice.

UMBRELLA LIABILITY COVERAGE

An umbrella policy or excess may be used to meet minimum requirements.

FOR CONSTRUCTION AND RENOVATION PROJECTS:

The following are required if selected below. Such insurance is due upon contract execution.

☐ **OWNER'S PROTECTIVE LIABILITY**

To be for the same limits of liability for bodily injury and property damage liability established for commercial general liability.

☐ **BUILDER'S RISK INSURANCE**

The contractor shall maintain Builder's Risk Insurance at his own expense to insure both the owner (Parish of Jefferson) and contractor as their interest may appear.



CERTIFICATE OF LIABILITY INSURANCE

DATE (MM/DD/YYYY)
07/13/2021

THIS CERTIFICATE IS ISSUED AS A MATTER OF INFORMATION ONLY AND CONFERS NO RIGHTS UPON THE CERTIFICATE HOLDER. THIS CERTIFICATE DOES NOT AFFIRMATIVELY OR NEGATIVELY AMEND, EXTEND OR ALTER THE COVERAGE AFFORDED BY THE POLICIES BELOW. THIS CERTIFICATE OF INSURANCE DOES NOT CONSTITUTE A CONTRACT BETWEEN THE ISSUING INSURER(S), AUTHORIZED REPRESENTATIVE OR PRODUCER, AND THE CERTIFICATE HOLDER.

IMPORTANT: If the certificate holder is an ADDITIONAL INSURED, the policy(ies) must have ADDITIONAL INSURED provisions or be endorsed. If SUBROGATION IS WAIVED, subject to the terms and conditions of the policy, certain policies may require an endorsement. A statement on this certificate does not confer rights to the certificate holder in lieu of such endorsement(s).

PRODUCER State Farm JONATHAN STEWART 4001 LAPALCO BLVD STE #4 HARVEY LA 70058		CONTACT NAME: FORD, TORIS PHONE (A/C, No, Ext): 504-347-1400 FAX (A/C, No): 504-309-1409 E-MAIL ADDRESS: TORIS@NOLASF.COM	
INSURED First Responder Equipment and Uniform Distributors, LLC T/A American Police Equipment, Inc. and A.P.E., Inc. 9015 AIRLINE HWY NEW ORLEANS LA 70118		INSURER(S) AFFORDING COVERAGE INSURER A: State Farm Fire and Casualty Company INSURER B: INSURER C: INSURER D: INSURER E: INSURER F:	
		NAIC # 25143	

COVERAGES**CERTIFICATE NUMBER:****REVISION NUMBER:**

THIS IS TO CERTIFY THAT THE POLICIES OF INSURANCE LISTED BELOW HAVE BEEN ISSUED TO THE INSURED NAMED ABOVE FOR THE POLICY PERIOD INDICATED. NOTWITHSTANDING ANY REQUIREMENT, TERM OR CONDITION OF ANY CONTRACT OR OTHER DOCUMENT WITH RESPECT TO WHICH THIS CERTIFICATE MAY BE ISSUED OR MAY PERTAIN, THE INSURANCE AFFORDED BY THE POLICIES DESCRIBED HEREIN IS SUBJECT TO ALL THE TERMS, EXCLUSIONS AND CONDITIONS OF SUCH POLICIES. LIMITS SHOWN MAY HAVE BEEN REDUCED BY PAID CLAIMS.

INSR LTR	TYPE OF INSURANCE	ADDL INSD	SUBR WVD	POLICY NUMBER	POLICY EFF (MM/DD/YYYY)	POLICY EXP (MM/DD/YYYY)	LIMITS
<input checked="" type="checkbox"/>	COMMERCIAL GENERAL LIABILITY <input type="checkbox"/> CLAIMS-MADE <input checked="" type="checkbox"/> OCCUR GEN'L AGGREGATE LIMIT APPLIES PER: <input type="checkbox"/> POLICY <input type="checkbox"/> PROJECT <input type="checkbox"/> LOG OTHER:	Y	Y	98-CC-E173-9	07/01/2021	07/01/2022	EACH OCCURRENCE \$ 1,000,000 DAMAGE TO RENTED PREMISES (Ea occurrence) \$ 300,000 MED EXP (Any one person) \$ 5,000 PERSONAL & ADV INJURY \$ 2,000,000 GENERAL AGGREGATE \$ 2,000,000 PRODUCTS - COMP/OP AGG \$ COMBINED SINGLE LIMIT (Ea accident) \$ BODILY INJURY (Per person) \$ BODILY INJURY (Per accident) \$ PROPERTY DAMAGE (Per accident) \$
<input type="checkbox"/>	AUTOMOBILE LIABILITY ANY AUTO OWNED AUTOS ONLY HIRED AUTOS ONLY SCHEDULED AUTOS NON-OWNED AUTOS ONLY						
<input type="checkbox"/>	UMBRELLA LIAB EXCESS LIAB DED RETENTION \$						EACH OCCURRENCE \$ AGGREGATE \$
<input type="checkbox"/>	WORKERS COMPENSATION AND EMPLOYERS' LIABILITY ANY PROPRIETOR/PARTNER/EXECUTIVE OFFICER/MEMBER EXCLUDED? (Mandatory in NH) If yes, describe under DESCRIPTION OF OPERATIONS below	Y/N	N/A	98-CC-E613-4	07/31/2020	07/31/2021	PER STATUTE OTH-ER E.L. EACH ACCIDENT \$ 500,000 E.L. DISEASE - EA EMPLOYEE \$ 500,000 E.L. DISEASE - POLICY LIMIT \$ 500,000

DESCRIPTION OF OPERATIONS / LOCATIONS / VEHICLES (ACORD 101, Additional Remarks Schedule, may be attached if more space is required)

CERTIFICATE HOLDER**CANCELLATION**

SHOULD ANY OF THE ABOVE DESCRIBED POLICIES BE CANCELLED BEFORE THE EXPIRATION DATE THEREOF, NOTICE WILL BE DELIVERED IN ACCORDANCE WITH THE POLICY PROVISIONS.

AUTHORIZED REPRESENTATIVE

Completed by an authorized State Farm representative. If signature is required, please contact a State Farm agent.

© 1988-2015 ACORD CORPORATION. All rights reserved.

**Insurance Declaration Affidavit
Automotive**

AFFIDAVIT

STATE OF Louisiana

PARISH/COUNTY OF Jefferson

BEFORE ME, the undersigned authority, personally came and appeared,
Jason Comboy, (Affiant) who after being duly sworn, deposed and said that he/she
is the fully authorized **President** of **T/A A.P.E., Inc. and American Police Equipment, Inc. (Entity)**, the
party who submitted a Proposal/Contract/Bid/RFP/SOQ No. **50-00135057**, to Jefferson Parish

Affiant further said:

- (1) That entity does not own automobiles or use automobiles in the furtherance of the services provided under the contract.
- (2) That if the entity obtains automobiles or begins to use automobiles in the furtherance of the services provided under the contract, affiant will notify Jefferson Parish and obtain the proper coverage.


Signature of Affiant

Jason Comboy
Printed Name of Affiant

SWORN AND SUBSCRIBED TO BEFORE ME

ON THE 13 DAY OF July, 2024.


Notary Public

Christopher J. Rouse
Printed Name of Notary

89437
Notary/Bar Roll Number

My commission expires At Death



Updated: 05.28.14



JEFFERSON PARISH

DEPARTMENT OF PURCHASING

CYNTHIA LEE SHENG
PARISH PRESIDENT

RENNY SIMNO
DIRECTOR

September 2020

Changes to Jefferson Parish Bidding Information

The Jefferson Parish Purchasing Department would like to make vendors aware of the following changes:

Total Bid Price Must Include the Cost of Naming Jefferson Parish as Additional Insured:

Bidder acknowledges that Bidder recovered the cost of any required insurance in the contract price as required by La.R.S. 9:2780.1 and that Bidder recovered any such cost for the purposes of insuring an obligation to indemnify Jefferson Parish, defend Jefferson Parish, or hold Jefferson Parish harmless and that Bidder's indemnity liability is limited to the amount of the proceeds that are payable under the insurance policy or policies that Bidder has obtained.

Electronic Procurement: Beginning November 1, 2020, Jefferson Parish will no longer accept manual bid submissions; and will only accept bid submissions electronically via our e-Procurement system, Central Bidding. Central Bidding can be accessed by visiting either www.centralbidding.com or www.jeffparishbids.net. All bidders will be required to register with Central Bidding. Jefferson Parish vendors are able to register for free by accessing the following link:
<https://www.centralauctionhouse.com/registration.php>.

Probable Construction Cost: Per Jefferson Parish Administrative Policy, the probable construction cost is not revealed in the Jefferson Parish Bidding Documents. Jefferson Parish Administrative Policy has changed and a range of the probable construction cost will be stated in the Jefferson Parish bidding document, entitled Important Notice to All Bidders – Bid Requirements. Per Louisiana Public Bid Law, the probable construction cost will be read at the bid opening.

Insurance Requirement: All bidders must provide proof of valid insurance in the required amounts as stated in the Standard Insurance Requirements for bidding purposes. Failure to provide the proof of valid insurance in all of the required coverage amounts will result in bid rejection.

GENERAL GOVERNMENT BLDG. -- 200 DERBIGNY ST., SUITE 4400, GRETN, LA 70053
OFFICE 504.364.2678

JOSEPH S. YENNI BLDG. -- 1221 ELMWOOD PARK BLVD., SUITE 404, JEFFERSON, LA 70123
OFFICE 504.364.2678
EMAIL: PURCHASING@JEFFPARISH.NET WEBSITE: WWW.JEFFPARISH.NET