

CIMSCO, INC.
1840 L & A ROAD
METAIRIE, LA 70001



Bid Number 50-00134664

One (1) year contract for supply of clamps, saddles and tapping sleeves for the Jefferson Parish Department of Public Works – Water and all Jefferson Parish Agencies and Municipalities.

BID DUE: July 1, 2021 AT 2:00 PM

ATTENTION VENDORS!!!

Please review all pages and respond accordingly, complying with all provisions in the technical specifications and Jefferson Parish Instructions for Bidders and General Terms and Conditions. All bids must be received on the Purchasing Department's eProcurement site, www.jeffparishbids.net, by the bid due date and time. Late bids will not be accepted.

Jefferson Parish Purchasing Department
200 Derbigny Street
General Government Building, Suite 4400
Gretna, LA 70053
Donna Reamey
Email: Dreamey@jeffparish.net
Phone: 504-364-2684

CIMSCO, INC.
1840 L & A ROAD
METAIRIE, LA 70001

DATE: 6/16/2021

BID NO.: 50-00134664

INVITATION TO BID
THIS IS NOT AN ORDER

JEFFERSON PARISH

PURCHASING DEPARTMENT
P.O. BOX 3
GRETN, LA. 70054-0009
504-364-3678

BUYER: DREAMEY@jeffparish.net

Page: 1

BIDS WILL BE RECEIVED ONLINE VIA WWW.JEFFPARISHBIDS.NET UNTIL 2:00 PM, 7/01/2021 AND PUBLICLY OPENED THEREAFTER IN THE WEST BANK PURCHASING DEPT, SUITE 4400, JEFFERSON PARISH GENERAL GOVERNMENT BUILDING, 200 DERBIGNY STREET, GRETN, LA 70053. At no charge, bidders are to submit via Jefferson Parish's electronic procurement page by visiting www.jeffparishbids.net to register for this free site. Additional instructions are included in the text box highlighting electronic procurement.

LATE BIDS WILL NOT BE ACCEPTED

NOTE: ONLY BIDS WRITTEN IN INK OR TYPEWRITTEN, AND PROPERLY SIGNED BY A MEMBER OF THE FIRM OR AUTHORIZED REPRESENTATIVE, WILL BE ACCEPTED. PENCIL AND/OR PHOTOSTATIC FIGURES OR SIGNATURES SHALL RESULT IN BID REJECTION. HOWEVER, ELECTRONIC SIGNATURES AS DEFINED IN LSA - R.S. 9:2620(8) ARE ACCEPTABLE. SIGNATURE MUST BE A SECURED DIGITAL SIGNATURE.

INSTRUCTIONS FOR BIDDERS AND GENERAL CONDITIONS **THE FOLLOWING INSTRUCTIONS APPLY TO ALL BIDS**

All bids submitted are subject to these instructions and general conditions and any special conditions and specifications contained herein, all of which are made part of this bid proposal reference. By submitting a bid, vendor agrees to comply with all provisions of Louisiana Law as well be in compliance with the Jefferson Parish Code of Ordinances, Louisiana Code of Ethics, applicable Jefferson Parish ethical standards and Jefferson Parish Resolution No. 113646 and/or Resolution No. 113647 as amended.

Jefferson Parish adheres to the Louisiana Code of Governmental Ethics, contained in Louisiana Revised Statutes Annotated, R.S. 42:1101, et seq. Vendor/Proposer by this submission, warrants that there are no "conflicts of interest" related to this procurement that would violate applicable Louisiana Law. Violation of the Louisiana Code of Governmental Ethics may result in rescission of contract, permit or licenses, and the imposition of fines and/or penalties, without contractual liability to the public in accordance with applicable law.

All vendors submitting bids should register as a Jefferson Parish vendor if not already yet registered. Registration forms may be downloaded from <http://purchasing.jeffparish.net> and by clicking on Vendor Information. Current W-9 forms with respective Tax Identification numbers and vendor applications may be submitted at any time; however, if your company is not registered and/or a current W-9 form is not on file, vendor registration is mandatory. Vendors may experience a delay in payment if your company is not a registered vendor with Jefferson Parish.

All quotations shall be based on F.O.B. Agency warehouse or job site, anywhere within the Parish as designated by the Purchasing Department. This provision does not apply to public works projects

JEFFERSON PARISH requires all products to be new (current) and all work must be performed according to standard practices for the project. Unless otherwise specified, no aftermarket parts will be accepted. Unless otherwise specified, all workmanship and materials must have at least one (1) year guaranty, in writing, from the date of delivery and/or acceptance of the project. Any deviations or alterations from the specifications must be indicated and/or supporting documentation supplied with bid submission.

Bidders should submit all questions in writing via email to the buyer's email address as indicated above, no later than Five (5) working days prior to the bid opening. Bid numbers should be mentioned in all requests. If submitting online, vendors may send questions via the E-Procurement site no later than Five (5) working days prior to the bid opening.

If this bid requires a pre-bid conference (see Additional Requirements section), bidders are advised that such conference will be held to allow bidders the opportunity to identify any discrepancies in the bid specifications and seek further clarification regarding instructions. The Purchasing Department will issue a written response to bidders' questions in the form of an Addendum. Please note that all official communication will be expressed in the form of an addendum.

Visit our website at [HTTP://PURCHASING.JEFFPARISH.NET](http://PURCHASING.JEFFPARISH.NET)

DATE: 5/16/2021

BID NO.: 50-00134664

CIMSCO, INC.
1840 L & A ROAD
METAIRIE, LA 70001

Page: 2

All formal Addenda require written acknowledgement on the bid form by the bidder. Failure to acknowledge an Addendum on the bid form shall cause the bid to be rejected. JEFFERSON PARISH reserves the right to award bid to next lowest responsive and responsible bidder in this event.

JEFFERSON PARISH will accept one price for each item unless otherwise indicated. Two or more prices for one item will result in bid rejection. Bidders are required to complete, sign and return the bid form and/or complete and return the associated line item pricing forms as indicated. Vendors must not alter the bid forms. Doing so will cause the bid to be rejected.

A corporate resolution or written evidence of the individual signing the bid having such authority must be submitted with the bid. Failure to comply will cause bid to be rejected. For corporate entities, such written evidence may be a printout of the Louisiana Secretary of State's website listing the signatory as an officer. Such printout shall be included with the bid submission. Bids submitted by Owners or Sole Proprietorships must include certification that he or she owns the entity for which the bid is signed. This documentation must be submitted with the bid. Failure to do so will result in bid rejection.

NOTE: A sample corporate resolution can be downloaded from our website <http://purchasing.jeffparish.net> or you may provide your own document. A sample certification of sole proprietorship can also be downloaded from our website <http://purchasing.jeffparish.net> or you may provide your own document.

INSTRUCTIONS FOR BIDDERS AND GENERAL CONDITIONS

A. AWARD OF CONTRACT: JEFFERSON PARISH reserves the right to award contracts or place orders on a lump sum or individual item basis, or such combination, as shall in its judgment be in the best interest of JEFFERSON PARISH. Every contract or order shall be awarded to the LOWEST RESPONSIVE and RESPONSIBLE BIDDER, taking into consideration the CONFORMITY WITH THE SPECIFICATIONS and the DELIVERY AND/OR COMPLETION DATE. SPLIT AWARDS MADE TO SEVERAL VENDORS WILL ONLY BE GRANTED TO THOSE DEEMED RESPONSIVE AND RESPONSIBLE.

All bid prices shall remain valid for 45 days. Jefferson Parish and the lowest responsive and responsible bidder(s) by mutual written consent may mutually agree to extend the deadline for award by one (1) or more extensions of thirty (30) calendar days.

PROTESTS: Only those vendors that submit bids in response to this solicitation may protest any element of the procurement, in writing to the Director of the Purchasing Department. Written protest must be received within 48 hours of the release of the bid tabulation by the Purchasing Department. After consultation, the Parish Attorney's Office will then respond to protests in writing. (For more information, please see Chapter 2, Article VII, Division 2, Sec. 2-914.1 of the Jefferson Parish Code of Ordinances.)

PREFERENCE: Unless federal funding is directly spent by Jefferson Parish for this purchase, preference is hereby given to materials, supplies, and provisions produced, manufactured or grown in Louisiana, quality being equal to articles offered by competitors outside the state. "LSA - R.S. 38:2251-2261"

B. USE OF BRAND NAMES AND STOCK NUMBERS: Where brand names and stock numbers are specified, it is for the purpose of establishing certain minimum standards of quality. Bids may be submitted for products of equal quality, provided brand names and stock numbers are specified. Complete product data may be required prior to award.

C. CANCELLATION OF CONTRACT: JEFFERSON PARISH reserves the right to cancel all or any part if not shipped promptly. No charges will be allowed for packing or cartage unless specified in quotation. The order must not be filed at a higher price than quoted. JEFFERSON PARISH reserves the right to cancel any contract at anytime and for any reason by issuing a THIRTY (30) day written notice to the contractor.

For good cause and as consideration for executing a contract with Jefferson Parish, vendor conveys, sells, assigns and transfers to Jefferson Parish or its assigns all rights, title and interest in and to all causes of action it may now or hereafter acquire under the antitrust laws of the United States and the State of Louisiana, relating to the particular good or services purchased or acquired by Jefferson Parish.

D. PRICES: Jefferson Parish is exempt from paying sales tax under LSA-R.S. 47:301 (8)(c). All prices for purchases by Jefferson Parish of supplies and materials shall be quoted in the unit of measure specified and unless otherwise specified, shall be exclusive of state and local taxes. The price quoted for work shall be stated in figures. In the event there is a difference in unit prices and totals, the unit price shall prevail.

Quantities listed are for bidding purposes only. Actual requirements may be more or less than quantities listed.

Bidders are not to exclude from participation in, deny the benefits of or subject to discrimination under any program or activity, any person in the United States on the grounds of race, color, national origin, or sex; nor discriminate on the basis of age under the Age Discrimination Act of 1975, or with respect to an otherwise qualified handicapped individual as provided in Section 504 of the Rehabilitation Act of 1973, or on the basis of religion, except that any exemption from such prohibition against discrimination on the basis of religion as provided in the Civil Rights Act of 1964, or Title VI and VII of the Act of April 11, 1968, shall also apply. This assurance includes compliance with the administrative requirements of the Revenue Sharing final handicapped discrimination provisions contained in Section 51.55 (c), (d), (e), and (k)(5) of the Regulations. New construction or renovation projects must comply with Section 504 of the 1973 Rehabilitation Act, as amended, in accordance with the American National Standard Institute's specifications (ANSI A17.1-1961).

DATE: 6/16/2021

BID NO.: 00-00134664

CIMSCO, INC.
1840 L & A ROAD
METAIRIE, LA 70001

INSTRUCTIONS FOR BIDDERS AND GENERAL CONDITIONS

Page: 3

Jefferson Parish and its partners as the recipients of federal funds are fully committed to awarding a contract(s) to firm(s) that will provide high quality services and that are dedicated to diversity and to containing costs. Thus, Jefferson Parish strongly encourages the involvement of minority and/or woman-owned business enterprises (DBE's, including MBE's, WBE's and SBE's) to stimulate participation in procurement and assistance programs.

The purpose and intention of this invitation to bid is to afford all suppliers an equal opportunity to bid on all construction, maintenance, repair, operating supplies and/or equipment listed in this bid proposal. JEFFERSON PARISH WILL ACCEPT ONE BID ONLY FROM EACH VENDOR. Items bid must meet specifications.

Advertised bids will be tabulated and a copy of the tabulation will be forwarded to each responding bidder.

IN ACCORDANCE WITH STATE REGULATIONS JEFFERSON PARISH OFFERS ELECTRONIC PROCUREMENT TO ALL VENDORS

This electronic procurement system allows vendors the convenience of reviewing and submitting bids online. This is a secure site and authorized personnel have limited read access only. Bidders are to submit electronically using this free service; while the website accepts various file types, one single PDF file containing all appropriate and required bid documents is preferred. Bidders submitting uploaded images of bid responses are solely responsible for clarity. If uploaded images/documents are not legible, then bidder's submission will be rejected. Please note all requirements contained in this bid package for electronic bid submission.

Please visit our E-Procurement Page at www.jeffparishbids.net to register and view Jefferson Parish solicitations. For more information, please visit the Purchasing Department page at <http://purchasing.jeffparish.net>.

The general specifications for construction projects and the purchase of materials, services and/or supplies are those adopted by the JEFFERSON PARISH Council by Resolution No. 113646 or 113647 as amended. The general conditions adopted by this resolution shall be considered as much a part of this document as if they were written wholly herein. A copy may be obtained from the Office of the Parish Clerk, Suite 6700, Jefferson Parish General Government Building, 200 Derbigny Street, Gretna, LA 70053. You may also obtain a copy by visiting the Purchasing Department webpage at <http://purchasing.jeffparish.net> and clicking on Online Forms.

ADDITIONAL REQUIREMENTS FOR THIS BID

PLEASE MATCH THE NUMBERS PRINTED IN THIS BOX WITH THE
CORRESPONDING INSTRUCTIONS BELOW.

10,12,13,15

1. All bidders must attend the MANDATORY pre-bid conference and will be required to sign in and out as evidence of attendance. In accordance with LSA R.S. 38:2212(I), all prospective bidders shall be present at the beginning of the MANDATORY pre-bid conference and shall remain in attendance for the duration of the conference. Any prospective bidder who fails to attend the conference or remain for the duration shall be prohibited from submitting a bid for the project.
2. Attendance to this pre-bid conference is optional. However, failure to attend the pre-bid conference shall not relieve the bidder of responsibility for information discussed at the conference. Furthermore, failure to attend the pre-bid conference and inspection does not relieve the successful bidder from the necessity of furnishing materials or performing any work that may be required to complete the work in accordance with the specification with no additional cost to the owner.
3. Contractor must hold current applicable JEFFERSON PARISH licenses with the Department of Inspection and Code Enforcement. Contractor shall obtain any and all permits required by the JEFFERSON PARISH Department of Inspection and Code Enforcement. The contractor shall be responsible for the payment of these permits. All permits must be obtained prior to the start of the project. Contractor must also hold any and all applicable Federal and State licenses. Contractor shall be responsible for the payment of these permits and shall obtain them prior to the start of the project.

DATE: 6/16/2021

BID NO.: 50-00134564

CIMSCO, INC.
1840 L & A ROAD
METAIRIE, LA 70001

Page: 4

INSTRUCTIONS FOR BIDDERS AND GENERAL CONDITIONS

4. A LA State Contractor's License will be required in accordance with LSA R.S. 37-2150 et. seq. and such license number will be shown on the outside of the bid electronic envelope. Failure to comply will cause the bid to be rejected. When submitting the bid electronically, the license number must be entered in the appropriate field in the electronic procurement system. Failure to comply will cause the bid to be rejected.
5. It is the bidder's responsibility to visit the job site and evaluate the job before submitting a bid.
6. Job site must be clean and free of all litter and debris daily and upon completion of the contract. Passageways must be kept clean and free of material, equipment, and debris at all times. Flammable material must be removed from the job site daily because storage will not be permitted on the premises. Precaution must be exercised at all times to safeguard the welfare of JEFFERSON PARISH and the general public.
7. PUBLIC WORKS BIDS: All awards for public works in excess of \$5,000.00 will be reduced to a formal contract which shall be recorded at the contractor's expense with the Clerk of Court and Ex-Officio Recorder of Mortgages for the Parish of Jefferson. A price list of recordation costs may be obtained from the Clerk of Court and Ex-Officio Recorder of Mortgages for the Parish of Jefferson. All awards in excess of \$25,000.00 will require both a performance and a payment bond. Unless otherwise stated in the bid specifications, the performance bond requirements shall be 100% of the contract price. Unless otherwise state in the bid specifications, the payment bond requirements shall be 100% of the contract price. Both bonds shall be supplied at the signing of the contract.
8. NON-PUBLIC WORKS BIDS: A performance bond will be required for this bid. The amount of the bond will be 100% of the contract price unless otherwise indicated in the specifications. The performance bond shall be supplied at the signing of the contract.
9. NON-PUBLIC WORKS BIDS: A payment bond will be required for this bid. The amount of the bond will be 100% of the contract price unless otherwise indicated in the specifications. The payment bond shall be supplied at the signing of the contract.
10. All bidders must comply with the requirements stated in the attached "Standard Insurance Requirements" sheet attached to this bid solicitation. Failure to comply with this instruction will result in bid rejection.
11. A bid bond will be required with bid submission in the amount of 5% of the total bid, unless otherwise stated in the bid specifications. All sureties must be in original format (no copies) When submitting a bid online, vendors must submit an electronic bid bond through the respective online clearinghouse bond management system(s) as indicated in the electronic bid solicitation on Central Auction House. No scanned paper copies of any bid bond will be accepted as part of the electronic bid submission.
12. This is a requirements contract to be provided on an as needed basis. JEFFERSON PARISH makes no representations on warranties with regard to minimum guaranteed quantities unless otherwise stated in the bid specifications.
13. Freight charges should be included in total cost when quoting. If not quoted FOB DELIVERED, freight must be quoted as a separate item. Bid may be rejected if not quoted FOB DELIVERED or if freight charges are not indicated on bid form.
14. PUBLIC WORKS BIDS - Completed, Signed and Properly Notarized Affidavits Required; This applies to all solicitations for construction, alteration or demolition of public buildings or projects, in conformity with the provisions contained in LSA-RS 38:2212.9, LSA-RS 38:2212.10, LSA-RS 38:2224, and Sec 2-923.1 of the Jefferson Parish Code of Ordinances. For bidding purposes, all bidders must submit with bid submission COMPLETED, SIGNED and PROPERLY NOTARIZED Affidavits, including: Non-Conviction Affidavit, Non-Collusion Affidavit, Campaign Contribution Affidavit, Debt Disclosures Affidavit, E-Verify Affidavit. For the convenience of vendors, all affidavits have been combined into one form entitled PUBLIC WORKS BID AFFIDAVIT. This affidavit must be submitted in its original format, and without material alteration, in order to be compliant and for the bid to be considered responsive. A scanned copy of the completed, signed and properly notarized affidavit may be submitted with the bid, however, the successful bidder must submit the original affidavit in its original format and without material alteration upon contract execution. Failure to comply will result in the bid submission being rejected as non-responsive. The Parish reserves the right to award bid to the next lowest responsive and responsible bidder in this event.

DATE: 6/16/2021

BID NO.: 50-00134664

CIMSCO, INC.
1840 L & A ROAD
METAIRIE, LA 70001

Page: 5

INSTRUCTIONS FOR BIDDERS AND GENERAL CONDITIONS

15. NON PUBLIC WORK BIDS - Completed, Signed and Properly Notarized Affidavits Required in conformity with the provisions contained in LSA - RS 38:2224 and Sec 2-923.1 of the Jefferson Parish Code of Ordinances. For bidding purposes, all bidders must submit with bid submission COMPLETED, SIGNED and PROPERLY NOTARIZED Affidavits, including: Non-Collusion Affidavit, Debt Disclosures Affidavit and Campaign Contribution Affidavit. For the convenience of vendors, all affidavits have been combined into one form entitled NON PUBLIC WORKS BID AFFIDAVIT. This affidavit must be submitted in its original format, and without material alteration, in order to be compliant and for the bid to be considered responsive. A scanned copy of the completed, signed and properly notarized affidavit may be submitted with the bid, however, the successful bidder must submit the original affidavit in its original format and without material alteration upon contract execution. Failure to comply will result in the bid submission being rejected as non-responsive. The Parish reserves the right to award bid to the next lowest responsive and responsible bidder in this event.
16. The ensuing contract for this bid solicitation may be eligible for FEMA reimbursement and/or Federal funding/reimbursement. As such, the referenced appendix will be applicable accordingly and shall be considered a part of the bid documents. All applicable certifications must be duly completed, signed and submitted with bid submission. Failure to submit applicable certifications with bid submission will result in bid rejection.
17. For this project, the Contractor shall not pay any state or local sales or use taxes on materials and equipment which are affixed and made part of the immovable property of the project or which is permanently incorporated in the project (hereinafter referred to as "applicable materials and equipment."). All purchases of applicable materials or equipment shall be made by the contractor on behalf of and as the agent of Jefferson Parish (Owner), a political subdivision of the State of Louisiana. No state and local sales and use taxes are owed on applicable materials and equipment under the provisions of Act 1029 of the 1991 Regular Session - Louisiana Revised Statute 47:301(8)(c). Owner will furnish to contractor a certificate form which certifies that Owner is not required to pay such state or local sales and use taxes, and contractor shall furnish a copy of such certificate to all vendors or suppliers of the applicable materials and equipment, and report to Owner the amount of taxes not incurred.

it shall be the duty of every parish officer, employee, department, agency, special district, board, and commission; and the duty of every contractor, subcontractor, and licensee of the parish, and the duty of every applicant for certification of eligibility for a parish contract or program, to cooperate with the Inspector General in any investigation, audit, inspection, performance review, or hearing pursuant to JPCO 2-155.10(19). By signing this document, every corporation, partnership, or person contracting with PARISH, whether by cooperative endeavor, intergovernmental agreement, bid, proposal, application or solicitation for a parish contract, and every application for certification of eligibility for a parish contract or program, attests that it understands and will abide by all provisions of JPCO 2-155.10.

See Page 1 for Conflicts of Interest Statement

DATE: 6/16/2021

BID NO.: 50-00134664

CIMSCO, INC.
1840 L & A ROAD
METAIRIE, LA 70001

Page: 6

BID FORM
Non Public Works

All Public Work Projects are required to use the Louisiana Uniform Public Work Bid Form

All prices must be held firm unless an escalation provision is requested in this bid. Jefferson Parish will allow one escalation during the term of the contract, which may not exceed the U.S. Bureau of Labor Statistics National Index for all Urban Consumers, unadjusted 12 month figure. The most recently published figure issued at the time an adjustment is requested will be used. A request must be made in writing by the vendor, and the escalation will only be applied to purchases made after the request is made.

Are you requesting an escalation provision?

YES _____ NO X

MAXIMUM ESCALATION PERCENTAGE REQUESTED _____ %

INITIAL BID PRICES WILL REMAIN FIRM THROUGH THE DATE OF July 1st 2022

For the purposes of comparison of bids when an escalation provision is requested, Jefferson Parish will apply the maximum escalation percentage quoted by the bidder to the period to which it is applied in the bid. The initial price and the escalation will be used to calculate the total bid price. It will be assumed, for comparison of prices only, that an equal amount of material or labor is purchased each month throughout the entire contract.

DELIVERY: FOB JEFFERSON PARISH

INDICATE DELIVERY DATE ON EQUIPMENT AND SUPPLIES

stock to 4 weeks

LOUISIANA CONTRACTOR'S LICENSE NO.: (if applicable) _____

THIS SECTION MUST BE COMPLETED BY BIDDER:

FIRM NAME: CIMSCO INC
ADDRESS: 1840 L & A Road
CITY, STATE: METAIRIE LA ZIP: 70001
TELEPHONE: 504 835-7319 FAX: 504 832-0820
EMAIL ADDRESS: Tim@cimscotnc.com

In the event that addenda are issued with this bid, bidders **MUST** acknowledge all addenda on the bid form. Bidder must acknowledge receipt of an addendum on the bid form by placing the addendum number as indicated. Failure to acknowledge any addendum on the bid form will result in bid rejection.

Acknowledge Receipt of Addenda: NUMBER: _____
NUMBER: _____
NUMBER: _____
NUMBER: _____

TOTAL PRICE OF ALL BID ITEMS: \$ 108,746.65

AUTHORIZED SIGNATURE: Tim Randall

TITLE: Sales

Tim Randall
Printed Name

SIGNING INDICATES YOU HAVE READ AND COMPLY WITH THE INSTRUCTIONS AND CONDITIONS.

NOTE: All bids should be returned with the BID NUMBER and BID OPENING DATE indicated on the outside of the envelope submitted to the Purchasing Department.

CIMSCO, INC.
1840 L & A ROAD
METAIRIE, LA 70001

DATE: 6/16/2021

Page 7

INVITATION TO BID FROM JEFFERSON PARISH - continued

BID NO.: 50-00134664

SEALED BID

ITEM NUMBER	QUANTITY	U/M	DESCRIPTION OF ARTICLES	UNIT PRICE QUOTED	TOTALS
1	13.00	EA	ONE (1) YEAR CONTRACT FOR SUPPLY OF CLAMPS, SADDLES & TAPPING SLEEVES FOR THE JEFFERSON PARISH DEPARTMENT OF PUBLIC WORKS - WATER AND ALL JEFFERSON PARISH AGENCIES AND MUNICIPALITIES. 0010 SADDLE, FLEXIBLE TAPPING, FOR 8 INCH SEWER PIPE WITH 6 INCH WYE OUTLET STAINLESS STEEL STRAPS STOCK NO. 00-132550	68.00	884.00
2	35.00	EA	0020 SADDLE, BRONZE, 2 INCH X 1 INCH CC TAP, O.D. 2.13 FOR CTS, NO LEAD BRASS GASKET IS SBR TWINSEAL DUAL O-RING STOCK NO. 00-0160360	39.00	1365.00
3	15.00	EA	0030 SADDLE, BRONZE, 2 INCH X 1 INCH CC TAP, O.D. 2.13 FOR CTS, NO LEAD BRASS, GASKET IS SBR TWINSEAL DUAL O-RING STOCK NO 00-0160370	39.00	585.00
4	20.00	EA	0040 SADDLE, DOUBLE STRAP, 4 INCH X 3 1/4 INCH CC TAP, 8 INCH WIDTH, 2 INCH PAGE 2 WIDE STRAPS, ALL STAINLESS STEEL O.D. RANGE 04.36 - 05.6 STOCK NO. 00-0160400	71.00	1420.00
5	6.00	EA	0050 SADDLE, DOUBLE STRAP, 4 INCH X 1 INCH CC TAP, 8 INCH WIDTH, 2 INCH STRAPS STOCK NO. 00-0160500	71.00	426.00
6	5.00	EA	0060 SADDLE, DOUBLE STRAP CLAMP, 4 IN X 2 IN CC TAP, O.D. RANGE 04.40 - 05.70, (S, CI & T) STOCK NO. 00-0160550	83.00	415.00
7	54.00	EA	0070 SADDLE, DOUBLE STRAP, 6 INCH X 3/4 INCH CC TAP, O.D. RANGE 06.45 TO 07.75, ALL STAINLESS STEEL STOCK NO. 00-0160850	74.00	3996.00
8	73.00	EA	0080 SADDLE, DOUBLE STRAP, 6 INCH X 1 INCH CC TAP, 8 INCH WIDTH, 2 INCH	74.00	5402.00

CIMSCO, INC.
1840 L & A ROAD
METAIRIE, LA 70001

DATE: 6/16/2021

Page 3

INVITATION TO BID FROM JEFFERSON PARISH - continued

BID NO.: 50-00134664

SEALED BID

ITEM NUMBER	QUANTITY	U/M	DESCRIPTION OF ARTICLES	UNIT PRICE QUOTED	TOTALS
9	24.00	EA	STRAPS ALL STAINLESS, O.D. 06.43 - 07.73 STOCK NO. 00-0160900	86.00	2064.00
10	295.00	EA	0090 SADDLE, DOUBLE STRAP, 6 INCH X 2 INCH CC TAP, O.D. RANGE 06.45 TO 07.75 ALL STAINLESS STEEL STOCK NO. 00-0161150	77.00	22,775.00
11	132.00	EA	0100 SADDLE, DOUBLE STRAP, 8 INCH X 3/4 INCH CC TAP, 8 INCH WIDTH, 2 INCH STRAPS ALL STAINLESS, O.D. RANGE 08.52 - 09.82 STOCK NO. 161200	179.00	23,528.00
12	30.00	EA	0110 SADDLE, DOUBLE STRAP, 8 INCH X 1 INCH CC TAP, 8 INCH WIDTH, 2 INCH STRAPS ALL STAINLESS, O.D. RANGE 08.52 - 09.82 STOCK NO. 00-161400	92.50	2,775.00
13	2.00	EA	0120 SADDLE, DOUBLE STRAP, 8 INCH X 2 INCH CC TAP, 8 IN WIDTH, 2 INCH WIDE STRAPS, ALL STAINLESS STEEL O.D. RANGE 08.52 - 09.82 STOCK NO. 00-0161450	89.00	178.00
14	7.00	EA	0130 SADDLE, DOUBLE STRAP, 10 INCH X 3/4 INCH CC TAP, O.D. RANGE 10.70 - 12.00 ALL STAINLESS STEEL STOCK NO. 00-0161800	89.00	623.00
15	40.00	EA	0140 SADDLE, DOUBLE STRAP CLAMP, 10 INCH X 1 INCH, O.D. RANGE 10.70 - 12.00 INCH CI & T STOCK NO. 00-0161900	89.00	3560.00
16	1.00	EA	0150 SADDLE, DOUBLE STRAP, 12 INCH X 3/4 INCH CC TAP, 8 INCH WIDTH, 2 INCH STRAPS STAINLESS, GRADE 30 GASKET, O.D. RANGE 13.14 - 14.44 STOCK NO. 00-0162100	256.00	256.00

CIMSCO, INC.
1840 L & A ROAD
METAIRIE, LA 70001

DATE: 6/16/2021

Page 9

INVITATION TO BID FROM JEFFERSON PARISH - continued

BID NO.: 50-00134664

SEALED BID

ITEM NUMBER	QUANTITY	U/M	DESCRIPTION OF ARTICLES	UNIT PRICE QUOTED	TOTALS
17	21.00	EA	STRAPS, ALL STAINLESS STEEL, O.D. RANGE 12.00 - 13.30 STOCK NO. 00-0162400	89.00	1869.00
18	3.00	EA	0170 SADDLE, DOUBLE STRAP, 12 INCH X 1 INCH CC TAP, 8 INCH WIDTH, 2 INCH WIDE STRAPS, ALL STAINLESS STEEL, O.D. RANGE 13.14 - 14.44 STOCK NO. 00-0162450	105.00	315.00
19	3.00	EA	0180 SADDLE, DOUBLE STRAP, 12 INCH X 2 INCH CC TAP, 8 INCH WIDTH, 2 INCH WIDE STRAPS, ALL STAINLESS STEEL, O.D. RANGE 12.30 - 13.60 STOCK NO. 00-0162500	110.00	330.00
20	14.00	EA	0190 SADDLE, DOUBLE STRAP (DSC), 12 INCH X 2 INCH CC TAP, 8 INCH WIDTH, 2 INCH WIDE STRAPS, ALL STAINLESS STEEL, O.D. RANGE 13.30 - 14.60 STOCK NO. 00-0162650	114.88	1608.30
21	1.00	EA	0200 SADDLE, DOUBLE STRAP, 12 INCH X 2 INCH CC TAP, 8 INCH WIDTH, 2 INCH WIDE STRAPS, ALL STAINLESS STEEL, O.D. RANGE 13.14 - 14.44 STOCK NO. 00-0162660	121.00	121.00
22	4.00	EA	0210 SADDLE, DOUBLE STRAP CLAMP, 14 INCH X 1 INCH CC, O.D. RANGE 15.40 INCH - 16.70 INCH STOCK NO 00-0162730	154.00	616.00
23	3.00	EA	0220 SADDLE, DOUBLE STRAP, 16 INCH X 3/4 INCH CC TAP, O.D. RANGE 17.20 - 18.50 ALL STAINLESS STEEL STOCK NO. 00-0162800	154.00	462.00
24	1.00	EA	0230 SADDLE, DOUBLE STRAP CLAMP, 16 INCH X 1 INCH CC TAP, O.D. RANGE 17.20 - 18. 50 CAST IRON & TRANSITE STOCK NO 00-0162900	160.00	160.00
			0240 SADDLE, DOUBLE STRAP, 20 INCH X 1 INCH CC TAP, O.D. RANGE 22.95 - 24.35, ALL STAINLESS STEEL		

DATE: 6/16/2021

CIMSCO, INC.
1840 L & A ROAD
METAIRIE, LA 70001

Page 10

INVITATION TO BID FROM JEFFERSON PARISH - continued

BID NO.: 50-00134664

SEALED BID

ITEM NUMBER	QUANTITY	U/M	DESCRIPTION OF ARTICLES	UNIT PRICE QUOTED	TOTALS
25	1.00	EA	STOCK NO. 00-0163040 0250 SADDLE, DOUBLE STRAP, 36 INCH X 3/4 INCH NPT OUTLET, 8 INCH WIDTH, O.D. RANGE 37.90 - 39.10, ALL STAINLESS STEEL TYPE T-304 STOCK NO. 00-0170240	21900	21900
26	19.00	EA	0260 CLAMP, 2 INCH X 3/4 INCH CC TAP X 8 INCH LONG, ALL STAINLESS, 2.35 - 2.63 RANGE, FULL GASKET STOCK NO. 00-0160200	7800	148200
27	21.00	EA	0270 CLAMP, SINGLE BAND, 2 INCH X 3/4 INCH CC X 8 INCH WIDE, ALL STAINLESS FULL FACED GASKET, O.D. RANGE 2.10 - 2.30 STOCK NO. 00-0160250	17800	163800
28	10.00	EA	0280 CLAMP, 2 INCH X 1 INCH CC TAP X 8 INCH LONG, ALL STAINLESS STEEL, 1.99 - 2.15 RANGE, FULL GASKET STOCK NO. 00-0160390	17800	78000
29	26.00	EA	0290 CLAMP, SINGLE STRAP CLAMP, 2 INCH X 3/4 INCH CC TAP, STAINLESS STEEL, O.D. RANGE 02.35 - 02.50 STOCK NO. 00-016030A	7800	202800
30	5.00	EA	0300 CLAMP, 2 INCH X 1 CC TAP X 8 INCH LONG, ALL STAINLESS, 2.32 - 2.63 RANGE FULL GASKET, CASCADE #CRT1-2.38-8-1CC STOCK NO. 00-0160350	7800	39000
31	1.00	EA	0310 CLAMP, BELL JOINT, FOR 36 INCH CAST IRON PIPE, STAINLESS STEEL BOLTS AND NUTS STOCK NO. 00-016390	110000	110000
32	7.00	EA	0320 CLAMP, FULL CIRCLE, 6 INCH, SINGLE BAND, 12 IN WIDTH, O.D. RANGE 06.85 - 07.25 INCH, CI & T STOCK NO. 00-0165110	8900	62300
33	10.00	EA	0330 CLAMP FULL CIRCLE STAINLESS STEEL 6 X 15 O.D. RANGE 5.85 - 6.35 SEW	11000	110000

CIMSCO, INC.
1840 L & A ROAD
METAIRIE, LA 70001

DATE: 5/16/2021

Page 11

INVITATION TO BID FROM JEFFERSON PARISH - continued

BID NO.: 50-00134664

SEALED BID

ITEM NUMBER	QUANTITY	U/M	DESCRIPTION OF ARTICLES	UNIT PRICE QUOTED	TOTALS
34	4.00	EA	STOCK NO. 00-0165120 0340 CLAMP, 6 INCH X 16 INCH WIDE, O.D. RANGE 06.55 - 06.95, ALL STAINLESS STEEL FULL CIRCLE STOCK NO. 00-0165140	111.00 <u>464.00</u>	
35	4.00	EA	0350 CLAMP, SINGLE BAND, 6 INCH (FCC) 12 INCH WIDTH O.D. RANGE 06.45 - 06.85 INS STOCK NO. 00-0165160	121.00 <u>484.00</u>	
36	2.00	EA	0360 CLAMP, SINGLE BAND, 6 INCH (FCC), 12 INCH WIDTH, O.D. RANGE 07.25 - 07.65 T STOCK NO. 00-0165170	121.00 <u>242.00</u>	
37	4.00	EA	0370 CLAMP, FULL CIRCLE (FCC), SINGLE BAND, ALL STAINLESS STEEL, 6 INCH X 15 INCH WIDTH, O.D. RANGE 07.25 - 07.65 STOCK NO. 00-0165180	121.00 <u>484.00</u>	
38	14.00	EA	0380 CLAMP, 6 INCH X 15 INCH LONG, ALL STAINLESS, 7.25 - 7.65 O.D. RANGE, SINGLE BAND, FULL GASKET STOCK NO. 00-0165190	127.00 <u>1806.00</u>	
39	26.00	EA	0390 CLAMP, PIPE REPAIR, 8 INCH X 15 INCH LONG, SINGLE BAND, ALL STAINLESS O.D. RANGE 08.99 - 09.39, BUNA FULL FACED GASKET STOCK NO. 00-0165500	142.00 <u>3692.00</u>	
40	17.00	EA	0400 CLAMP, PIPE REPAIR, 8 INCH X 16 INCH LONG, SINGLE BAND, ALL STAINLESS STEEL, O.D. RANGE 09.40 - 09.80, FULL FACED GASKET STOCK NO. 00-0165900	142.00 <u>2414.00</u>	
41	4.00	EA	0410 CLAMP, FULL CIRCLE, SINGLE BAND 10 INCH X 16 INCH LONG, O.D. RANGE 10.95 - 11.35, STAINLESS STEEL STOCK NO. 00-0166010	175.00 <u>700.00</u>	
42	3.00	EA	0420 CLAMP, SINGLE BAND, 10 INCH (FCC) 15 INCH WIDTH, O.D. RANGE 11.75 - 12.15	175.00 <u>525.00</u>	

CIMSCO, INC.
1840 L & A ROAD
METAIRIE, LA 70001

DATE: 6/16/2021

Page 12

INVITATION TO BID FROM JEFFERSON PARISH - continued

BID NO.: 50-00134664

SEALED BID

ITEM NUMBER	QUANTITY	U/M	DESCRIPTION OF ARTICLES	UNIT PRICE QUOTED	TOTALS
43	2.00	EA	STOCK NO. 00-0166100 0430 CLAMP, DOUBLE BAND, 20 INCH X 24 INCH, O.D. RANGE 23.14 - 24.34 STAINLESS STEEL STOCK NO. 00-0167810	1400 ⁰⁰ 2800⁰⁰	
44	46.00	EA	0440 CLAMP, PIPE REPAIR, 6 INCH X 1 INCH CC TAP X 15 INCH LONG, ALL STAINLESS 06.84 - 07.24 RANGE, SINGLE BAND FULL GASKET STOCK NO. 00-0170100	148 ⁰⁰ 6808⁰⁰	
45	5.00	EA	0450 CLAMP, PIPE REPAIR, 8 INCH X 3/4 INCH CC TAP X 15 INCH LONG, ALL STAINLESS, 08.99 - 09.39 O.D. RANGE, SINGLE BAND, FULL GASKET STOCK NO. 00-0170120	169 ⁰⁰ 845⁰⁰	
46	5.00	EA	0460 CLAMP, SINGLE BAND, 6 INCH X 3/4 INCH CC TAP X 16 INCH LONG, ALL STAINLESS, 07.25 - 07.65 O.D. RANGE FULL GASKET STOCK NO. 00-0170400	148 ⁰⁰ 740⁰⁰	
47	4.00	EA	0470 CLAMP, 2 INCH X 12 INCH LONG, ALL STAINLESS STEEL, 02.35 - 02.63 RANGE, FULL GASKET STOCK NO. 00-016460A	590 ⁰⁰ 2360⁰⁰	
48	1.00	EA	0480 CLAMP, BELL JOINT, 8 IN, STAINLESS BOLTS/NUTS, SHOPCOAT STOCK NO. 00-016320	398 ⁶⁵ 398.65	
49	3.00	EA	0490 CLAMP, BELL JOINT, 12 IN, FOR SHOULDERLESS CAST IRON/DUCTILE IRON PIPE, TO HAVE BAKED ON BLUE TEFLON, STOCK NO. 00-0163400	406 ⁰⁰ 1218⁰⁰	
50	2.00	EA	0500 CLAMP, 1-1/2 INCH X 8 INCH LONG, 1.88 - 1.92 RANGE, ALL STAINLESS STEEL, FULL GASKET STOCK NO. 00-0164550	152.36 304.70	
51	6.00	EA	0510 CLAMP, 1-1/2 IN X 1 CC TAP X 8 IN LONG, ALL STAINLESS, 1.90 OD. FOR	105 ⁰⁰ 630⁰⁰	

CIMSCO, INC.
1840 L & A ROAD
METAIRIE, LA 70001

DATE: 6/16/2021

Page 13

INVITATION TO BID FROM JEFFERSON PARISH - continued

BID NO.: 50-00134664

SEALED BID

ITEM NUMBER	QUANTITY	U/M	DESCRIPTION OF ARTICLES	UNIT PRICE QUOTED	TOTALS
52	24.00	EA	FOR GALVANIZED PIPE, STOCK NO. 00-0164570 0520 CLAMP, 2 INCH X 6 INCH LONG, ALL STAINLESS, 2.35 - 2.63 RANGE, FULL GASKET STOCK NO. 00-0164600	4400	105600
53	8.00	EA	0630 CLAMP, 4 INCH X 15 INCH LONG, SINGLE BAND, ALL STAINLESS STEEL, O.D. RANGE 04.45 - 04.73 BUNA FULL FACE, STOCK NO. 00-0164940	8600	68800
54	50.00	EA	0540 CLAMP, 6 INCH X 15 INCH LONG, ALL STAINLESS, 6.84 - 7.24 RANGE, SINGLE BAND FULL GASKET STOCK NO. 00-016510	10400	520000
55	3.00	EA	0550 SADDLE, DOUBLE STRAP, 6 INCH X INCH CC TAP, O.D. RANGE 06.45 - 07.75, ALL STAINLESS STEEL STOCK NO. 00-0165940	3600	10800
56	5.00	EA	0560 CLAMP, 12 INCH X 20 INCH LONG, SINGLE BAND, ALL STAINLESS STEEL INCLUDING BOLTS/NUTS, O.D. RANGE 13.10 - 13.50, SBR STOCK NO. 00-0166800	28120	140600
57	1.00	EA	0570 CLAMP, 18 IN X 20 IN LONG, ALL STAINLESS, 19.23 - 19.98 RANGE, FULL GASKET STOCK NO. 00-0167700	37000	37000
58	1.00	EA	0580 CLAMP, 4 INCH X 2 INCH CC TAP X 12 INCH LONG, ALL STAINLESS, 4.75 - 5.15 RANGE, DOMESTIC STOCK NO. 00-0170080	11800	11800
59	1.00	EA	0590 CLAMP, 6 INCH X INCH CC TAP X 15 INCH LONG, ALL STAINLESS, 6.84 TO 7.24 RANGE, SINGLE BAND, FULL GASKET STOCK NO. 00-0170090	13100	13100
60	2.00	EA	0600 CLAMP, PIPE, SINGLE BAND, 8 INCH X 1 INCH CC TAP X 16 INCH LONG, ALL	16100	32200

CIMSCO, INC.
1840 L & A ROAD
METAIRIE, LA 70001

DATE: 6/16/2021

Page 14

INVITATION TO BID FROM JEFFERSON PARISH - continued

BID NO.: 50-00134664

SEALED BID

ITEM NUMBER	QUANTITY	U/M	DESCRIPTION OF ARTICLES	UNIT PRICE QUOTED	TOTALS
61	5.00	EA	STAINLESS, 9.00 - 9.40 RANGE, FULL GASKET STOCK NO. 00-0170130 0610 CLAMP, PIPE, 6 INCH X 1 INCH CC TAP X 15 INCH LONG, ALL STAINLESS, 7.25 TO 7.65 RANGE, SINGLE BAND, FULL GASKET STOCK NO. 00-0170410	126.00 =	630.00 =
62	5.00	EA	0620 CLAMP, PIPE, 8 INCH X 1 INCH CC TAP X 15 INCH LONG, ALL STAINLESS, 9.40 TO 9.80 RANGE, SINGLE BAND, FULL GASKET, STOCK NO. 00-0170440	148.00 =	740.00 =
63	2.00	EA	0630 CLAMP, SINGLE BAND, 12 IN X CC TAP X 20 IN LONG, ALL STAINLESS, 13.55 - 13.95 RANGE STOCK NO. 00-0170500	288.00 =	576.00 =
64	3.00	EA	0640 CLAMP, PATCH, 1 INCH X 8 INCH LONG, ALL STAINLESS, 1.12 TO 1.32 O.D., TAPERED WAFFLE GASKET, FULL CIRCLE, STOCK NO. 00-0184500	390.00 =	1170.00 =



CERTIFICATE OF LIABILITY INSURANCE

DATE (MM/DD/YYYY)

7/1/2021

THIS CERTIFICATE IS ISSUED AS A MATTER OF INFORMATION ONLY AND CONFERS NO RIGHTS UPON THE CERTIFICATE HOLDER. THIS CERTIFICATE DOES NOT AFFIRMATIVELY OR NEGATIVELY AMEND, EXTEND OR ALTER THE COVERAGE AFFORDED BY THE POLICIES BELOW. THIS CERTIFICATE OF INSURANCE DOES NOT CONSTITUTE A CONTRACT BETWEEN THE ISSUING INSURER(S), AUTHORIZED REPRESENTATIVE OR PRODUCER, AND THE CERTIFICATE HOLDER.

IMPORTANT: If the certificate holder is an ADDITIONAL INSURED, the policy(ies) must be endorsed. If SUBROGATION IS WAIVED, subject to the terms and conditions of the policy, certain policies may require an endorsement. A statement on this certificate does not confer rights to the certificate holder in lieu of such endorsement(s).

PRODUCER		CONTACT NAME: Darly Oser	
E B Ducasse Insurance Agency, Inc		PHONE (A/C, No. Ext): (504) 840-9883	FAX (A/C, No): (504) 840-9889
3200 Ridgeland Dr, Suite 401		E-MAIL ADDRESS: doser@abducasse.com	
Metairie LA 70002		INSURER(S) AFFORDING COVERAGE	
INSURED		INSURER A: United Fire and Indemnity Co	
Cimsco Inc		INSURER B: Technology Insurance Co	
1840 L and A Road		INSURER C:	
		INSURER D:	
		INSURER E:	
Metairie LA 70001-6237		INSURER F:	

COVERAGES

CERTIFICATE NUMBER: 20 - 21

REVISION NUMBER:

THIS IS TO CERTIFY THAT THE POLICIES OF INSURANCE LISTED BELOW HAVE BEEN ISSUED TO THE INSURED NAMED ABOVE FOR THE POLICY PERIOD INDICATED. NOTWITHSTANDING ANY REQUIREMENT, TERM OR CONDITION OF ANY CONTRACT OR OTHER DOCUMENT WITH RESPECT TO WHICH THIS CERTIFICATE MAY BE ISSUED OR MAY PERTAIN, THE INSURANCE AFFORDED BY THE POLICIES DESCRIBED HEREIN IS SUBJECT TO ALL THE TERMS, EXCLUSIONS AND CONDITIONS OF SUCH POLICIES. LIMITS SHOWN MAY HAVE BEEN REDUCED BY PAID CLAIMS.

INSR LTR	TYPE OF INSURANCE	ADDL SUBR INSD WVD	POLICY NUMBER	POLICY EFF (MM/DD/YYYY)	POLICY EXP (MM/DD/YYYY)	LIMITS
A	<input checked="" type="checkbox"/> COMMERCIAL GENERAL LIABILITY					
	<input type="checkbox"/> CLAIMS-MADE <input checked="" type="checkbox"/> OCCUR		60418952	9/1/2020	9/1/2021	EACH OCCURRENCE \$ 1,000,000 DAMAGE TO RENTED PREMISES (Ea occurrence) \$ 100,000 MED EXP (Any one person) \$ 5,000 PERSONAL & ADV INJURY \$ 1,000,000 GENERAL AGGREGATE \$ 2,000,000 PRODUCTS - COMP/OP AGG \$ 2,000,000
	GEN'L AGGREGATE LIMIT APPLIES PER: POLICY <input checked="" type="checkbox"/> PRO-JECT <input type="checkbox"/> LOC OTHER:					
A	AUTOMOBILE LIABILITY					
	<input checked="" type="checkbox"/> ANY AUTO ALL OWNED AUTOS HIRED AUTOS		60418952	9/1/2020	9/1/2021	COMBINED SINGLE LIMIT (Ea accident) \$ 1,000,000 BODILY INJURY (Per person) \$ BODILY INJURY (Per accident) \$ PROPERTY DAMAGE (Per accident) \$ \$ \$
	<input checked="" type="checkbox"/> UMBRELLA LIAB EXCESS LIAB		60418952	9/1/2020	9/1/2021	EACH OCCURRENCE \$ 1,000,000 AGGREGATE \$ 1,000,000 \$
B	WORKERS COMPENSATION AND EMPLOYERS' LIABILITY					
	ANY PROPRIETOR/PARTNER/EXECUTIVE OFFICER/MEMBER EXCLUDED? (Mandatory in NH)	N/A	TWC3898818	9/1/2020	9/1/2021	<input checked="" type="checkbox"/> PER STATUTE <input type="checkbox"/> OTH-ER E.L. EACH ACCIDENT \$ 1,000,000 E.L. DISEASE - EA EMPLOYEE \$ 1,000,000 E.L. DISEASE - POLICY LIMIT \$ 1,000,000
	DESCRIPTION OF OPERATIONS below					

DESCRIPTION OF OPERATIONS / LOCATIONS / VEHICLES (ACORD 101, Additional Remarks Schedule, may be attached if more space is required)
This certificate of insurance neither affirmatively nor negatively alters, amends, nor extends the coverage afforded by Policy Number 60418952 issued by United Fire and Indemnity and Policy Number TWC398818 issued by Technology Insurance Company. The general liability and auto liability policies contain a blanket additional insured and blanket waiver of subrogation if required by written contract. The general liability is primary and non contributory.

Bind # 50-00134664

CERTIFICATE HOLDER

CANCELLATION

Jefferson Parish Purchasing Department
P O Box 9
Gretna, LA 70054

SHOULD ANY OF THE ABOVE DESCRIBED POLICIES BE CANCELLED BEFORE THE EXPIRATION DATE THEREOF, NOTICE WILL BE DELIVERED IN ACCORDANCE WITH THE POLICY PROVISIONS.

AUTHORIZED REPRESENTATIVE

E Ducasse Sr./WAYNE

Edward B. Ducasse Sr.

ACORD 25 (2014/01)
INS025 (201401)

The ACORD name and logo are registered marks of ACORD

© 1988-2014 ACORD CORPORATION. All rights reserved.



"THE STANDARD OF EXCELLENCE IN THE INDUSTRY"

SADDLES (ALL Stainless Steel) - STYLES – CS12, CS22

Service saddles shall be made from 18-8, Type 304 stainless steel, per ASTM A240. All saddles shall be of two-piece construction and shall be certified to ANSI/NSF 61.

Cascade Style CS12 Service Saddles shall be a minimum of 5 inches wide for 4 inch through 12 inch pipe sizes with outlets of 3/4 inch or 1 inch, CC or IPS thread. The saddles shall have a single stud/receiver assembly per side.

Cascade Style CS22 Service Saddles shall be 8 inches wide for 4 inch through 24 inch pipe sizes with outlets of 3/4 inch through 2 inch, CC or IPS thread. These saddles shall have a double stud/receiver assembly per side.

Bolts and nuts shall be 5/8-11, 18-8 stainless steel. Nuts shall be coated with Xylan to prevent galling. Washers shall be nylon 1/16" x 1-1/4". Outlets shall be 18-8 stainless steel either CC or IP thread. Gaskets shall be virgin SBR - grade 30 (optional virgin EPDM) rubber. Gasket shall be a gridded mat, with tapered ends, with the outlet section having dual o-rings contacting the saddle body and multiple rings contacting the pipe. A stainless steel reinforcing ring shall be insert-molded within the outlet section to prevent gasket expansion under pressure. All weldments (welds and metal surfaces) shall be chemically passivated to meet ASTM A380. Service Saddles shall be Model CS12 or CS22 as manufactured by Cascade Waterworks Mfg. Co. of Yorkville, IL or approved equal.

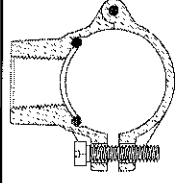
These specifications are accurate at time of publication and are subject to change without prior notice.

03.02.2011

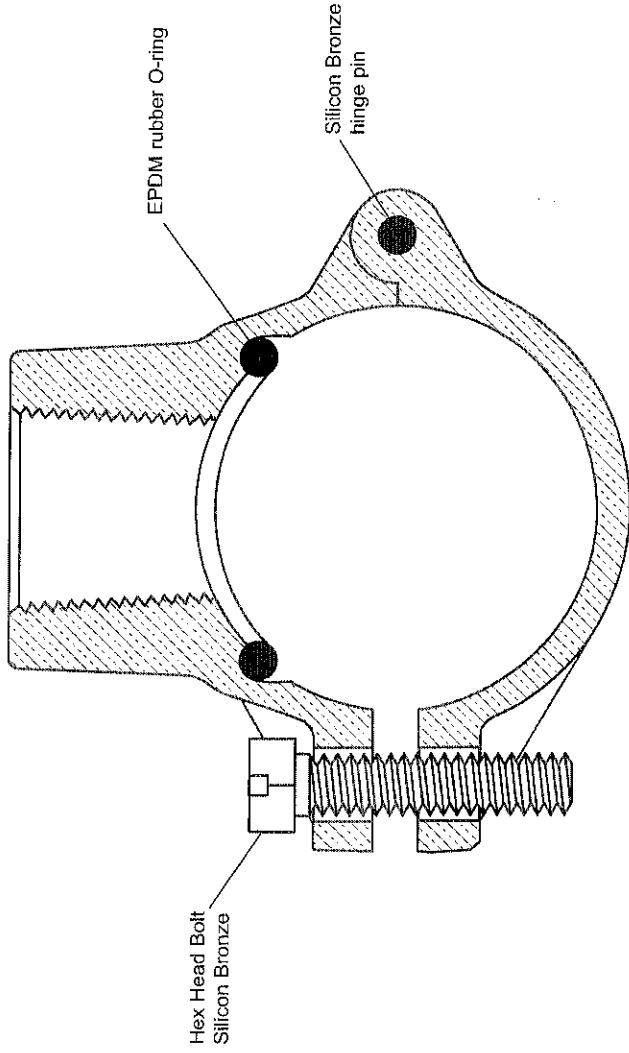
CASCADE WATERWORKS MANUFACTURING COMPANY
1213 Badger Street • Yorkville, IL 60560 • (630) 553-0840 • (800) 426-4301 • FAX (630) 553-0181
www.cascademfg.com

SUBMITTAL INFORMATION

Brass Saddle For 2" Copper - (S40-xxx style)



S40 BRASS SADDLE WITH AWWA TAP FOR 2" COPPER TUBING



COPPER TUBE SIZE	ACTUAL TUBE O.D. (in.)	AWWA TAP SIZE	APPROX. WT. LBS.	CATALOG NUMBER	✓ SUBMITTED ITEM(S)
2"	2.13	1/2"	0.9	S40-201	
		3/4"	1.1	S40-203	
		1"	1.4	S40-204	

FEATURES

- All brass conforms to AWWA Standard C800 (ASTM B62 and ASTM B584, UNS NO C83600 - 85-5-5-5).
- Saddle body and strap permanently held together with silicon bronze pin.
- Bolt is 5/16" slotted hex head silicon bronze.
- O-ring is EPDM rubber per ASTM D2000
- 150 psi working pressure rating

The Ford Meter Box Company considers the information in this submittal form to be correct at the time of publication. Item and option availability, including specifications, are subject to change without notice. Please verify that your product information is current. Our standard warranty applies.



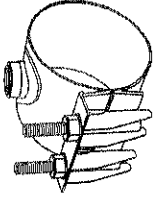
The Ford Meter Box Company, Inc.
P.O. Box 443, Wabash, Indiana U.S.A. 46992-0443
Phone: 260-563-3171 / Fax: 800-826-3487
Overseas Fax: 260-563-0167
www.fordmeterbox.com

Submitted By:

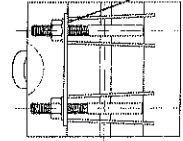
06/09/20

SUBMITTAL INFORMATION

Stainless Steel Saddle - Single Band - (FS313-xxx-TAP style)



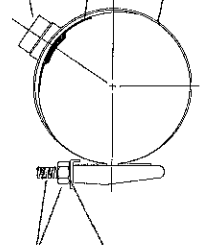
TAPPED STAINLESS STEEL SADDLE



Stainless Steel Nuts and Studs - Type 304 stainless steel per ASTM A193 and A194. Heavy hex nuts are coated to prevent galling.

Washers - Type 304 stainless steel per ASTM A193 and A194

Lifter Bars - Type 304 stainless steel



Stainless Taps - Type 304 stainless steel TiG welded to shell. Available with AWWA, FIP or BSP threads 1/2" thru 2".

Gasket - NBR (Buna-N) rubber per ASTM D2000. Optional EPDM available.

Stainless Band - Type 304 stainless steel. Saddles are fully passivated to restore stainless steel characteristics.

NOM. PIPE SIZE	SADDLE O.D. RANGE (IN.)	TAP SIZE 1/2" - 1"			TAP SIZE 1-1/4" - 2"			CATALOG NUMBER
		BAND WIDTH	NO. OF BOLTS	BOLT SIZE	APPROX. WT. LBS.	BAND WIDTH	NO. OF BOLTS	APPROX. WT. LBS.
2"	2.13	6"	2	1/2"	1.7	N/A	N/A	N/A
2-1/2"	2.50-2.70	6"	2	1/2"	1.7	N/A	N/A	N/A
3"	2.88	6"	2	1/2"	2	N/A	N/A	N/A
	3.00-3.13							
	3.15-3.25							
	3.46-3.70							
	3.50							
	3.80							
	3.90-4.10							
4"	4.50-4.80	6"	2	1/2"	2.4	7-1/2"	2	4.2
5"	4.80-5.20	6"	2	5/8"	2.7	7-1/2"	2	4.8
	5.56							
	6.00-6.40							
	6.41-6.80							
6"	6.63-6.90	6"	2	5/8"	2.9	7-1/2"	2	5.1
	6.80-7.20							
	7.45-7.85							
	8.00-8.40							
8"	8.40-8.80	6"	2	5/8"	3.3	7-1/2"	2	5.6
	8.63-9.05							
	9.00-9.40							
	10.00-10.40							
10"	10.40-10.80	6"	2	5/8"	6.2	7-1/2"	2	6.6
	10.75-11.10							
	11.10-11.50							
	12.00-12.40							
12"	12.40-12.80	6"	2	5/8"	6.8	7-1/2"	2	7.1
	12.75-13.20							
	13.10-13.50							

* CC7 tap not available for this size.

** CC6, CC7 and IP7 not available for this size.

OUTLET TAP CODE

CC (AWWA) THREAD		IP THREAD	
THREAD	Code No. / SUBMITTED ITEM(S)	THREAD	Code No. / SUBMITTED ITEM(S)
1/2" CC	CC1	1/2" IP	IP1
3/4" CC	CC3	3/4" IP	IP3
1" CC	CC4	1" IP	IP4
1-1/4" CC	CC5	1-1/4" IP	IP5
1-1/2" CC	CC6	1-1/2" IP	IP6
2" CC	CC7	2" IP	IP7

To Order: Select the catalog number for the desired pipe range and complete the catalog number by adding the outlet thread tap code.

Example: A single band saddle for 9.05 O.D. pipe with a 3/4" CC thread would be FS313-940-CC3.

FEATURES

- All components are made of type 304 stainless steel
- All welds are fully passivated for corrosion resistance
- 2" -12" approved for use on HDPE. If Belleville washers are desired, use the prefix FSP313
- Saddles 4" and larger have coined body for gasket retention
- NBR (Buna-N) rubber pad gasket per ASTM D2000 with raised compression seal
- Rated for working pressure equal to the lesser of pipe pressure rating or 250 psi
- Certified to ANSI/NSF 61

The Ford Meter Box Company considers the information in this submittal form to be correct at the time of publication. Item and option availability, including specifications, are subject to change without notice. Please verify that your product information is current. Our standard warranty applies.



The Ford Meter Box Company, Inc.

P.O. Box 443, Wabash, Indiana U.S.A. 46992-0443

Phone: 260-563-3171 / Fax: 800-826-3487

Overseas Fax: 260-563-0167

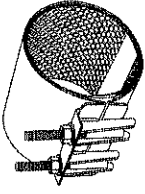
www.fordmeterbox.com

Submitted by:

06/14/21

SUBMITTAL INFORMATION

Repair Clamps - (FS1-xxx-Length style)



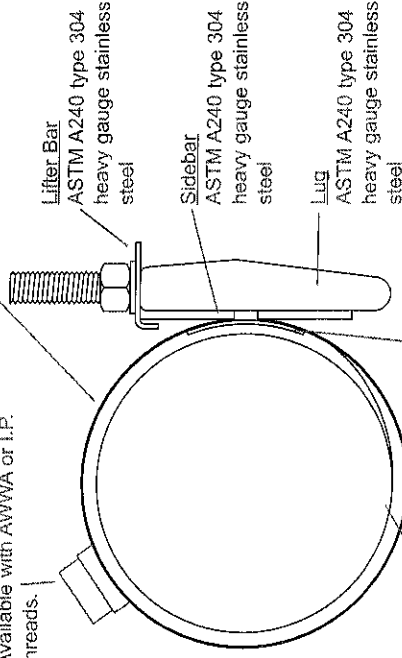
6" AND 8" ALL STAINLESS STEEL CIRCLE REPAIR CLAMPS

Optional Stainless Taps

ASTM A240 type 304 stainless steel tig welded to band. Available with AWWA or I.P. threads.

Band

ASTM A240 type 304 stainless steel

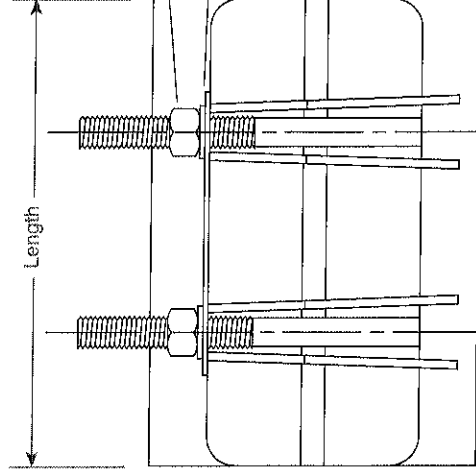


Gasket

Gridded virgin SBR compounded for water service, per ASTM D2000. Buna-N Nitrile is optional.

Armor

ASTM A240 type 304 heavy gauge stainless steel, mold bonded into the gasket to ensure uniform compression against the pipe



Bolts & Nuts
ASTM A240 type 304 stainless steel nuts and washers. Nuts are coated to prevent galling.

OUTLET THREAD TAP CODE

CC (AWWA) THREAD		IP THREAD	
THREAD	CODE NUMBER	THREAD	CODE NO.
3/4" CC	-CC3	3/4" IP	-IP3
1" CC	-CC4	1" IP	-IP4
1-1/4" CC	-CC5	1-1/4" IP	-IP5
1-1/2" CC	-CC6	1-1/2" IP	-IP6
2" CC	-CC7	2" IP	-IP7

NOM. PIPE SIZE	PIPE O.D. RANGE	LENGTH AND APPROXIMATE WEIGHT (LBS.)						BOLT SIZE	BAND THICKNESS	CATALOG NUMBER FS1-XXX-LENGTH	✓ SUBMITTED ITEM(S)
		7.5"	10"	12.5"	15"	20"	24"	30"	36"		
6"	5.95 - 6.35									FS1-635-	
	6.35 - 6.75									FS1-675-	
	6.50 - 6.96									FS1-696-	
	6.84 - 7.24	7	9	10	14	17	21	27	34	FS1-724-	
	7.05 - 7.45									FS1-745-	
	7.25 - 7.65									FS1-765-	
8"	7.45 - 7.85									FS1-785-	
	7.95 - 8.35									FS1-835-	
	8.54 - 8.94	8	10	11	15	19	24	30	39	FS1-894-	
	8.99 - 9.39									FS1-939-	
Number of Bolts		2	3	3	4	6	7	9	10	FS1-967-	

FEATURES

- Buna-N gasket and conductivity strips are available
- Also available in two-and three-section clamps for a wider range of pipe sizes and tolerances
- Optional outlet taps are available for repair of service line pull-outs. Add tapping code to catalog number
- All welds are fully passivated to restore corrosion resistant characteristics of stainless steel
- UL classified to ANSI/NSF Standard 61

The Ford Meter Box Company considers the information in this submittal form to be correct at the time of publication. Item and option availability, including specifications, are subject to change without notice. Please verify that your product information is current.



The Ford Meter Box Company, Inc.

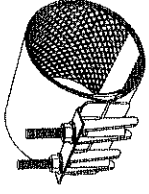
P.O. Box 443, Wabash, Indiana U.S.A. 46992-0443
Phone: 260-563-3171 / Fax: 800-826-3487
Overseas Fax: 260-563-0167
www.fordmeterbox.com

Submitted By:

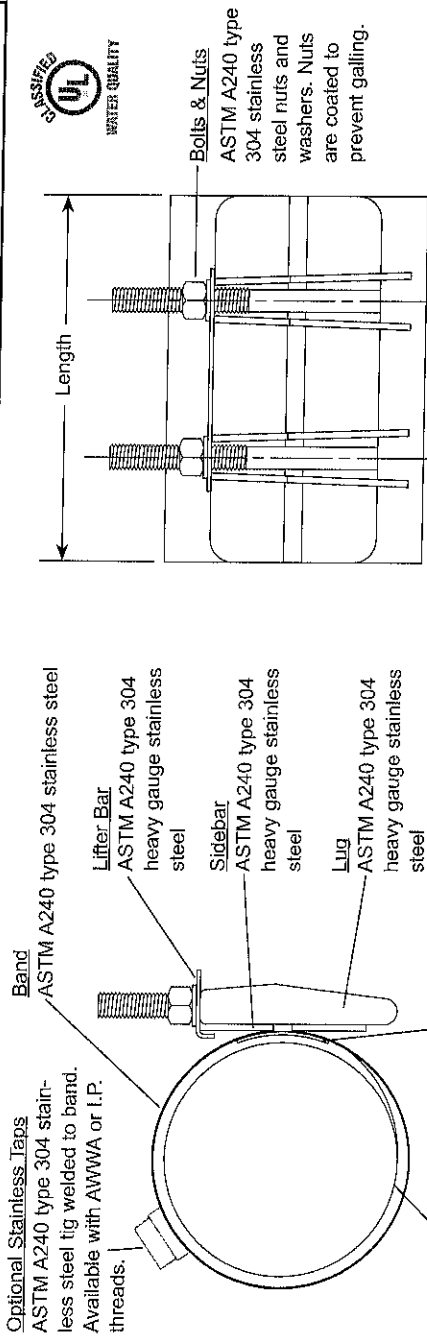
09/16/16

SUBMITTAL INFORMATION

Repair Clamps - (FS1-xxxx-Length style)



10" AND 12" ALL STAINLESS STEEL CIRCLE REPAIR CLAMPS



OUTLET THREAD TAP CODE

CC (AWWA) THREAD		IP THREAD	
THREAD	CODE NUMBER	THREAD	CODE No.
3/4" CC	-CC3	3/4" IP	-IP3
1" CC	-CC4	1" IP	-IP4
1-1/4" CC	-CC5	1-1/4" IP	-IP5
1-1/2" CC	-CC6	1-1/2" IP	-IP6
2" CC	-CC7	2" IP	-IP7

NOM. PIPE SIZE	PIPE O.D. RANGE	LENGTH AND APPROXIMATE WEIGHT (LBS.)								BOLT SIZE	BAND THICKNESS	CATALOG NUMBER	✓ SUBMITTED ITEM(S)
		7.5"	10"	12.5"	15"	20"	24"	30"	36"				
10"	9.70 - 10.10									5/8" 11 UNC	20 GA.	FS1-1010-Length	
	9.95 - 10.35											FS1-1035-Length	
	10.64 - 11.04	11	14	16	24	28	32	42	49			FS1-1104-Length	
	11.04 - 11.44											FS1-1144-Length	
	11.34 - 11.74											FS1-1174-Length	
12"	11.75 - 12.15									5/8" 11 UNC	20 GA.	FS1-1215-Length	
	12.00 - 12.40											FS1-1240-Length	
	12.10 - 12.50											FS1-1250-Length	
	12.62 - 13.02											FS1-1302-Length	
	13.10 - 13.50	13	16	18	27	30	36	48	57			FS1-1350-Length	
	13.40 - 13.80											FS1-1380-Length	
	13.70 - 14.10											FS1-1410-Length	
	14.00 - 14.40											FS1-1440-Length	
Number of Bolts		2	3	4	4	6	7	9	10				

FEATURES

- NBR (Buna-N) gasket and conductivity strips are available
- Also available in two-and three-section clamps for a wider range of pipe sizes and tolerances
- Optional outlet taps are available for repair of service line pull-outs. Add tapping code to catalog number
- All welds are fully passivated to restore corrosion resistant characteristics of stainless steel
- UL classified to ANSI/NSF Standard 61

The Ford Meter Box Company considers the information in this submittal form to be correct at the time of publication. Item and option availability, including specifications, are subject to change without notice. Please verify that your product information is current.



The Ford Meter Box Company, Inc.

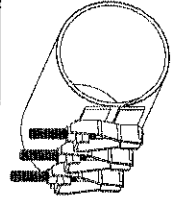
P.O. Box 443, Wabash, Indiana U.S.A. 46992-0443
Phone: 260-563-3171 / Fax: 800-826-3487
Overseas Fax: 260-563-0167
www.fordmeterbox.com

Submitted By:

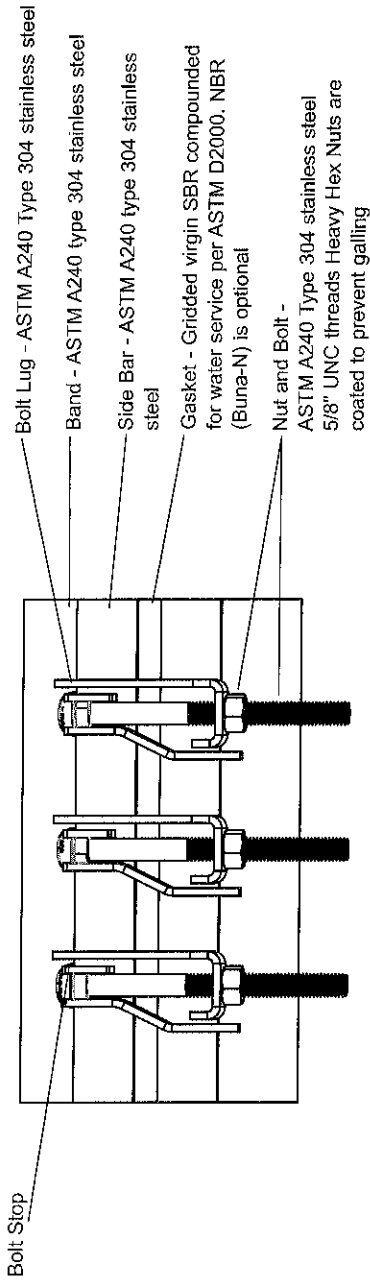
11/10/17

SUBMITTAL INFORMATION

Drop-In Bolt Repair Clamp - (FLS1-xxx-Length style)



STAINLESS STEEL DROP-IN BOLT REPAIR CLAMP



OPTIONAL OUTLET THREAD TAP CODE

CC (AWWA) Thread		IP Thread	
THREAD	CODENUMBER	THREAD	CODE NUMBER
3/4" CC	-CC3	3/4" IP	-IP3
1" CC	-CC4	1" IP	-IP4
1-1/4" CC	-CC5	1-1/4" IP	-IP5
1-1/2" CC	-CC6	1-1/2" IP	-IP6
2" CC	-CC7	2" IP	-IP7

NOM. PIPE SIZE	PIPE O.D. RANGE	LENGTH AND APPROXIMATE WEIGHT (LBS.)				BOLT SIZE	BAND THICKNESS	CATALOG NUMBER	✓ SUBMITTED ITEM(S)
		7.5"	10"	12.5"	15"	20"			
6"	5.95 - 6.35							FLS1-635-Length	
	6.56 - 6.96							FLS1-696-Length	
	6.84 - 7.24	7	10	11	15	21		FLS1-724-Length	
	7.05 - 7.45							FLS1-745-Length	
	7.45 - 7.85						20 GA.	FLS1-785-Length	
8"	7.95 - 8.35							FLS1-835-Length	
	8.54 - 8.94							FLS1-894-L length	
	8.99 - 9.39	9	11	12	18	22		FLS1-939-L length	
	9.27 - 9.67							FLS1-967-L length	
Number of Bolts		2	3	3	4	5			

FEATURES

- All stainless steel construction with removable bolts
- All welds are fully passivated to restore the corrosion resistant characteristics of the stainless steel
- NBR (Buna-N) gasket and conductivity strips are available
- Also available in two and three section clamps for a wider range of pipe sizes and tolerances
- Optional outlet taps are available for repair of service line pull-outs. Add tapping code to the catalog number

The Ford Meter Box Company considers the information in this submittal form to be correct at the time of publication. Item and option availability, including specifications, are subject to change without notice. Please verify that your product information is current.



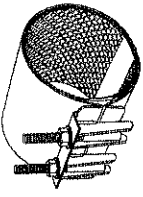
The Ford Meter Box Company, Inc.
P.O. Box 443, Wabash, Indiana U.S.A. 46992-0443
Phone: 260-563-3171 / Fax: 800-826-3487
Overseas Fax: 260-563-0167
www.fordmeterbox.com

Submitted By:

06/14/18

SUBMITTAL INFORMATION

Repair Clamps - (FS1-xxx-Length style)



2" TO 4" ALL STAINLESS STEEL CIRCLE REPAIR CLAMPS

Optional Stainless Taps
ASTM A240 type 304 stainless steel tig welded to band. Available with AWWA or I.P. threads.

Band
ASTM A240 type 304 stainless steel

Lifter Bar
ASTM A240 type 304 heavy gauge stainless steel

Sidebar
ASTM A240 type 304 heavy gauge stainless steel

Lug
ASTM A240 type 304 heavy gauge stainless steel

Armor
ASTM A240 type 304 heavy gauge stainless steel, mold bonded into the gasket to ensure uniform compression against the pipe

Armor
ASTM A240 type 304 heavy gauge stainless steel, mold bonded into the gasket to ensure uniform compression against the pipe

Armor
ASTM A240 type 304 heavy gauge stainless steel, mold bonded into the gasket to ensure uniform compression against the pipe

Armor
ASTM A240 type 304 heavy gauge stainless steel, mold bonded into the gasket to ensure uniform compression against the pipe

Armor
ASTM A240 type 304 heavy gauge stainless steel, mold bonded into the gasket to ensure uniform compression against the pipe

Armor
ASTM A240 type 304 heavy gauge stainless steel, mold bonded into the gasket to ensure uniform compression against the pipe

Armor
ASTM A240 type 304 heavy gauge stainless steel, mold bonded into the gasket to ensure uniform compression against the pipe

Armor
ASTM A240 type 304 heavy gauge stainless steel, mold bonded into the gasket to ensure uniform compression against the pipe

Armor
ASTM A240 type 304 heavy gauge stainless steel, mold bonded into the gasket to ensure uniform compression against the pipe

Armor
ASTM A240 type 304 heavy gauge stainless steel, mold bonded into the gasket to ensure uniform compression against the pipe

Armor
ASTM A240 type 304 heavy gauge stainless steel, mold bonded into the gasket to ensure uniform compression against the pipe

Armor
ASTM A240 type 304 heavy gauge stainless steel, mold bonded into the gasket to ensure uniform compression against the pipe

Armor
ASTM A240 type 304 heavy gauge stainless steel, mold bonded into the gasket to ensure uniform compression against the pipe

Armor
ASTM A240 type 304 heavy gauge stainless steel, mold bonded into the gasket to ensure uniform compression against the pipe

Armor
ASTM A240 type 304 heavy gauge stainless steel, mold bonded into the gasket to ensure uniform compression against the pipe

Armor
ASTM A240 type 304 heavy gauge stainless steel, mold bonded into the gasket to ensure uniform compression against the pipe

Armor
ASTM A240 type 304 heavy gauge stainless steel, mold bonded into the gasket to ensure uniform compression against the pipe

Armor
ASTM A240 type 304 heavy gauge stainless steel, mold bonded into the gasket to ensure uniform compression against the pipe

Armor
ASTM A240 type 304 heavy gauge stainless steel, mold bonded into the gasket to ensure uniform compression against the pipe

Armor
ASTM A240 type 304 heavy gauge stainless steel, mold bonded into the gasket to ensure uniform compression against the pipe

Armor
ASTM A240 type 304 heavy gauge stainless steel, mold bonded into the gasket to ensure uniform compression against the pipe

Armor
ASTM A240 type 304 heavy gauge stainless steel, mold bonded into the gasket to ensure uniform compression against the pipe

Armor
ASTM A240 type 304 heavy gauge stainless steel, mold bonded into the gasket to ensure uniform compression against the pipe

Armor
ASTM A240 type 304 heavy gauge stainless steel, mold bonded into the gasket to ensure uniform compression against the pipe

Armor
ASTM A240 type 304 heavy gauge stainless steel, mold bonded into the gasket to ensure uniform compression against the pipe

Armor
ASTM A240 type 304 heavy gauge stainless steel, mold bonded into the gasket to ensure uniform compression against the pipe

Armor
ASTM A240 type 304 heavy gauge stainless steel, mold bonded into the gasket to ensure uniform compression against the pipe

Armor
ASTM A240 type 304 heavy gauge stainless steel, mold bonded into the gasket to ensure uniform compression against the pipe

Armor
ASTM A240 type 304 heavy gauge stainless steel, mold bonded into the gasket to ensure uniform compression against the pipe

Armor
ASTM A240 type 304 heavy gauge stainless steel, mold bonded into the gasket to ensure uniform compression against the pipe

Armor
ASTM A240 type 304 heavy gauge stainless steel, mold bonded into the gasket to ensure uniform compression against the pipe

Armor
ASTM A240 type 304 heavy gauge stainless steel, mold bonded into the gasket to ensure uniform compression against the pipe

Armor
ASTM A240 type 304 heavy gauge stainless steel, mold bonded into the gasket to ensure uniform compression against the pipe

Armor
ASTM A240 type 304 heavy gauge stainless steel, mold bonded into the gasket to ensure uniform compression against the pipe

Armor
ASTM A240 type 304 heavy gauge stainless steel, mold bonded into the gasket to ensure uniform compression against the pipe

Armor
ASTM A240 type 304 heavy gauge stainless steel, mold bonded into the gasket to ensure uniform compression against the pipe

Armor
ASTM A240 type 304 heavy gauge stainless steel, mold bonded into the gasket to ensure uniform compression against the pipe

Armor
ASTM A240 type 304 heavy gauge stainless steel, mold bonded into the gasket to ensure uniform compression against the pipe

Armor
ASTM A240 type 304 heavy gauge stainless steel, mold bonded into the gasket to ensure uniform compression against the pipe

Armor
ASTM A240 type 304 heavy gauge stainless steel, mold bonded into the gasket to ensure uniform compression against the pipe

Armor
ASTM A240 type 304 heavy gauge stainless steel, mold bonded into the gasket to ensure uniform compression against the pipe

Armor
ASTM A240 type 304 heavy gauge stainless steel, mold bonded into the gasket to ensure uniform compression against the pipe

Armor
ASTM A240 type 304 heavy gauge stainless steel, mold bonded into the gasket to ensure uniform compression against the pipe

Armor
ASTM A240 type 304 heavy gauge stainless steel, mold bonded into the gasket to ensure uniform compression against the pipe

Armor
ASTM A240 type 304 heavy gauge stainless steel, mold bonded into the gasket to ensure uniform compression against the pipe

Armor
ASTM A240 type 304 heavy gauge stainless steel, mold bonded into the gasket to ensure uniform compression against the pipe

Armor
ASTM A240 type 304 heavy gauge stainless steel, mold bonded into the gasket to ensure uniform compression against the pipe

Armor
ASTM A240 type 304 heavy gauge stainless steel, mold bonded into the gasket to ensure uniform compression against the pipe

Armor
ASTM A240 type 304 heavy gauge stainless steel, mold bonded into the gasket to ensure uniform compression against the pipe

Armor
ASTM A240 type 304 heavy gauge stainless steel, mold bonded into the gasket to ensure uniform compression against the pipe

Armor
ASTM A240 type 304 heavy gauge stainless steel, mold bonded into the gasket to ensure uniform compression against the pipe

Armor
ASTM A240 type 304 heavy gauge stainless steel, mold bonded into the gasket to ensure uniform compression against the pipe

Armor
ASTM A240 type 304 heavy gauge stainless steel, mold bonded into the gasket to ensure uniform compression against the pipe

Armor
ASTM A240 type 304 heavy gauge stainless steel, mold bonded into the gasket to ensure uniform compression against the pipe

Armor
ASTM A240 type 304 heavy gauge stainless steel, mold bonded into the gasket to ensure uniform compression against the pipe

Armor
ASTM A240 type 304 heavy gauge stainless steel, mold bonded into the gasket to ensure uniform compression against the pipe

Armor
ASTM A240 type 304 heavy gauge stainless steel, mold bonded into the gasket to ensure uniform compression against the pipe

Armor
ASTM A240 type 304 heavy gauge stainless steel, mold bonded into the gasket to ensure uniform compression against the pipe

Armor
ASTM A240 type 304 heavy gauge stainless steel, mold bonded into the gasket to ensure uniform compression against the pipe

Armor
ASTM A240 type 304 heavy gauge stainless steel, mold bonded into the gasket to ensure uniform compression against the pipe

Armor
ASTM A240 type 304 heavy gauge stainless steel, mold bonded into the gasket to ensure uniform compression against the pipe

Armor
ASTM A240 type 304 heavy gauge stainless steel, mold bonded into the gasket to ensure uniform compression against the pipe

Armor
ASTM A240 type 304 heavy gauge stainless steel, mold bonded into the gasket to ensure uniform compression against the pipe

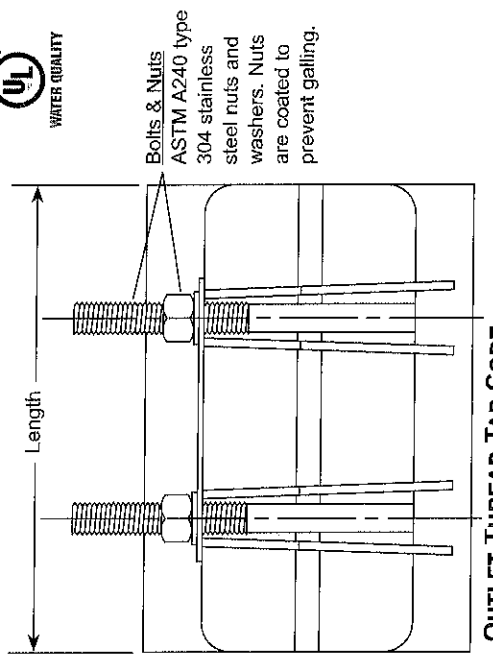
Armor
ASTM A240 type 304 heavy gauge stainless steel, mold bonded into the gasket to ensure uniform compression against the pipe

Armor
ASTM A240 type 304 heavy gauge stainless steel, mold bonded into the gasket to ensure uniform compression against the pipe

Armor
ASTM A240 type 304 heavy gauge stainless steel, mold bonded into the gasket to ensure uniform compression against the pipe

Armor
ASTM A240 type 304 heavy gauge stainless steel, mold bonded into the gasket to ensure uniform compression against the pipe

Armor
ASTM A240 type 304 heavy gauge stainless steel, mold bonded into the gasket to ensure uniform compression against the pipe



OUTLET THREAD TAP CODE

CC (AWWA) Thread		IP Thread	
THREAD	MIN. CLAMP SZ.	THREAD	MIN. CLAMP SZ.
3/4" CC	2.63	3/4" IP	2.63
1" CC	2.63	1" IP	2.63
1-1/4" CC	3.70	1-1/4" IP	3.70
1-1/2" CC	4.25	1-1/2" IP	3.70
2" CC	4.73	2" IP	4.25

NOM. PIPE SIZE	PIPE O.D. RANGE	LENGTH AND APPROXIMATE WEIGHT (LBS.)										BOLT SIZE	BAND THICKNESS	CATALOG NUMBER	/ SUBMITTED ITEM(S)
		4"	6"	7.5"	10"	12.5"	15"	20"	24"	30"					
2"	2.05 - 2.25	3	4	4	5	5	8	n/a	n/a	n/a				FS1-225-	
	2.35 - 2.63	N/A	4	4	5	5	8	n/a	n/a	n/a				FS1-263-	
2-1/4" - 2-1/2"	2.70 - 3.00	N/A	4	5	5	6	8	n/a	n/a	n/a				FS1-300-	
	2.97 - 3.25													FS1-325-	
3"	3.42 - 3.66													FS1-366-	
	3.46 - 3.70													FS1-370-	
	3.73 - 4.00													FS1-400-	
	3.96 - 4.25													FS1-425-	
	4.06 - 4.35													FS1-435-	
	4.37 - 4.65													FS1-465-	
4"	4.45 - 4.73													FS1-473-	
	4.50 - 4.80													FS1-480-	
	4.74 - 5.14													FS1-514-	
	4.95 - 5.35													FS1-535-	
	5.22 - 5.62													FS1-562-	
Number of Bolts		1	2	2	3	3	4	6	6	9					

FEATURES

- Buna-N gasket and conductivity strips are available
- Also available in two-and three-section clamps for a wider range of pipe sizes and tolerances
- Optional outlet taps are available for repair of service line pull-outs. Add tapping code to catalog number
- All welds are fully passivated to restore corrosion resistant characteristics of stainless steel
- UL classified to ANSI/NSF Standard 61

The Ford Meter Box Company considers the information in this submittal form to be correct at the time of publication. Item and option availability, including specifications, are subject to change without notice. Please verify that your product information is current.



The Ford Meter Box Company, Inc.

P.O. Box 443, Wabash, Indiana U.S.A. 46992-0443

Phone: 260-563-3171 / Fax: 800-826-3487

Overseas Fax: 260-563-0167

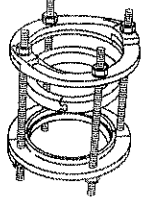
www.fordmeterbox.com

Submitted By:

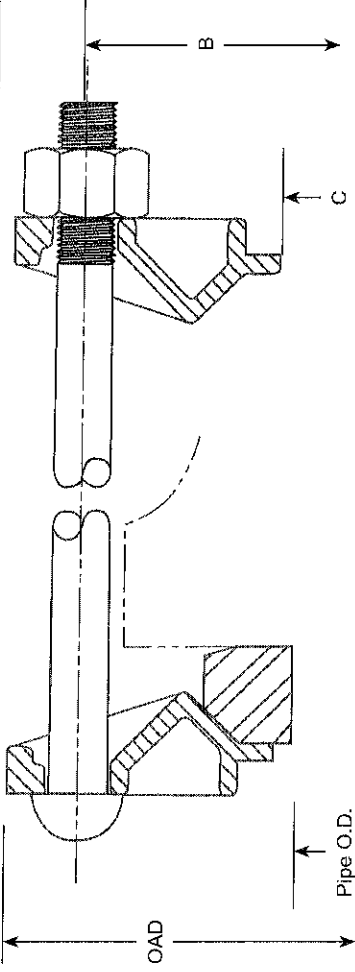
11/07/16

SUBMITTAL INFORMATION

Bell Joint Leak Clamp - (FBC-xxx style)



BELL JOINT REPAIR CLAMPS FOR CAST IRON, PVC, DUCTILE IRON AND STEEL PIPE



Steel and Standard Steel Size PVC (SBR Gasket)

NOM. PIPE SIZE	OVERALL PIPE O.D.	DIAMETER (O.A.D.)	DIAMETER (B)	CLAMP I.D. (C)	BOLT/STUD		APPROX. WT. LBS.	CATALOG NUMBER	✓ SUBMITTED ITEM(S)
					SIZE (IN.)	QTY.			
2"	2.38	5-5/8"	4-1/2"	2-1/2"	1/2 x 7	2	5	FBC-238	
2-1/2"	2.88	6-1/8"	5"	3"	1/2 x 7	2	5	FBC-288	
3"	3.5	6-3/4"	5-5/8"	3-5/8"	1/2 x 12	2	5	FBC-350	
4"	4.5	7-13/16"	6-11/16"	4-11/16"	1/2 x 12	4	13	FBC-450	
6"	6.63	9-15/16"	8-13/16"	6-13/16"	1/2 x 12	4	14	FBC-663	
8"	8.63	12-5/8"	11-1/2"	8-13/16"	1/2 x 12	4	18	FBC-863	
10"	10.75	16"	14-7/8"	10-15/16"	1/2 x 16	6	24	FBC-1075	
12"	12.75	18"	16-7/8"	12-15/16"	1/2 x 16	6	28	FBC-1275	

Cast Iron, Ductile Iron or C900 PVC (NBR (Buna-N) Gasket)

NOM. PIPE SIZE	OVERALL PIPE O.D.	DIAMETER (O.A.D.)	DIAMETER (B)	CLAMP I.D. (C)	BOLT/STUD		APPROX. WT. LBS.	CATALOG NUMBER	✓ SUBMITTED ITEM(S)
					SIZE (IN.)	QTY.			
4"	4.80-5.00	10-13/16"	9-5/16"	5-3/16"	5/8 x 9	4	16	FBC-500	
6"	6.90-7.10	13-1/16"	11-9/16"	7-1/4"	5/8 x 9	4	19	FBC-710	
8"	9.05-9.30	15-7/8"	14-3/8"	9-7/16"	5/8 x 11	4	21	FBC-930	
10"	11.10-11.40	17-3/4"	16-1/4"	11-9/16"	5/8 x 14	6	27	FBC-1140	
12"	13.20-13.50	20-1/16"	18-9/16"	13-5/8"	5/8 x 14	6	31	FBC-1350	

Note: For use on C900 PVC, add "-C900" to end of the catalog number. This option will provide longer bolts than indicated to accommodate a PVC bell only.

FEATURES

- Repair leaking bell joints on PVC or cast iron pipe without recaulking or cutting out the joint
- A keyed insert enables adjustment of the NBR (Buna-N) gasket to fit either the old or new styles of cast iron pipe
- Body: Ductile iron ASTM A536
- Gaskets: SBR rubber or NBR (Buna-N) rubber per ASTM C111
- Bolts and nuts: Low alloy ASTM A242 and AWWA C111
- Finish: Black e-coat epoxy

The Ford Meter Box Company considers the information in this submittal form to be correct at the time of publication. Item and option availability, including specifications, are subject to change without notice. Please verify that your product information is current.



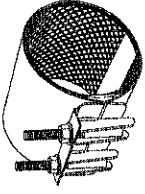
The Ford Meter Box Company, Inc.
P.O. Box 443, Wabash, Indiana U.S.A. 46992-0443
Phone: 260-563-3171 / Fax: 800-826-3487
Overseas Fax: 260-563-0167
www.fordmeterbox.com

Submitted By:

07/10/18

SUBMITTAL INFORMATION

Repair Clamps - (FS1-xxx-Length style)



2" TO 6" ALL STAINLESS STEEL CIRCLE REPAIR CLAMPS

Optional Stainless Taps

Type 304 stainless steel TIG

welded to band. Available with

AWWA or I.P. threads.

Band

Type 304

stainless steel

Lifter Bar

Type 304 heavy gauge

stainless steel

Sidebar

Type 304 heavy gauge

stainless steel

Lug

Type 304 heavy

gauge stainless steel

Armor

Type 304 heavy gauge

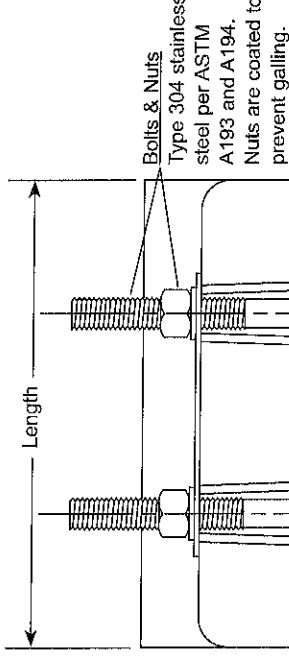
stainless steel, mold

bonded into the

gasket to ensure

uniform compression

against the pipe



Gasket

Gridded virgin SBR compounded

for water service, per ASTM D2000.

NBR (Buna-N) Nitrile is optional.

OUTLET THREAD TAP CODE

THREAD	CC (AWWA) Thread	MIN. CLAMP SZ.	THREAD	IP Thread
3/4" CC	-CC3	2.63	3/4" IP	-IP3
1" CC	-CC4	2.63	1" IP	-IP4
1-1/4" CC	-CC5	3.70	1-1/4" IP	-IP5
1-1/2" CC	-CC6	4.25	1-1/2" IP	-IP6
2" CC	-CC7	4.73	2" IP	-IP7

LENGTH AND APPROXIMATE WEIGHT (LBS.)

NOM PIPE SIZE	PIPE OD RANGE (In.)	LENGTH AND APPROXIMATE WEIGHT (LBS.)									
		4"	6"	7.5"	10"	12.5"	15"	20"	24"	30"	36"
2"	1.69 - 1.96	3	4	4	5	5	8	N/A	N/A	N/A	N/A
	1.90 - 2.15	3	4	4	5	5	8	N/A	N/A	N/A	N/A
3"	3.25 - 3.50	N/A	4	5	5	6	9	N/A	N/A	N/A	N/A
	5.75 - 6.15	N/A	N/A	7	9	10	14	17	21	27	34
6"	6.10 - 6.50	N/A	N/A	7	9	10	14	17	21	27	34
	6.40 - 6.80	N/A	N/A	7	9	10	14	17	21	27	34
	6.80 - 7.00	N/A	N/A	7	9	10	14	17	21	27	34
	6.93 - 7.09	N/A	N/A	7	9	10	14	17	21	27	34
	7.06 - 7.46	N/A	N/A	7	9	10	14	17	21	27	34
	7.55 - 7.95	N/A	N/A	7	9	10	14	17	21	27	34
Number of Bolts		1	2	2	3	3	4	6	7	9	10

BOLT SIZE	BAND THICKNESS	CATALOG NUMBER	✓ SUBMITTED ITEM(s)
1/2" 13 UNC	24 GA.	FS1-196-Length	
		FS1-215-Length	
		FS1-350-Length	
		FS1-615-Length	
		FS1-650-Length	
		FS1-680-Length	
		FS1-700-Length	
		FS1-746-Length	
		FS1-795-Length	

FEATURES

- NBR (Buna-N) gasket and conductivity strips are available
- Also available in two-and three-section clamps for a wider range of pipe sizes and tolerances
- Optional outlet taps are available for repair of service line pull-outs. Add tapping code to catalog number
- All welds are fully passivated to restore corrosion resistant characteristics of stainless steel
- Certified to ANSI/NSF Standard 61

The Ford Meter Box Company considers the information in this submittal form to be correct at the time of publication. Item and option availability, including specifications, are subject to change without notice. Please verify that your product information is current. Our standard warranty applies.



The Ford Meter Box Company, Inc.

P.O. Box 443, Wabash, Indiana U.S.A. 46992-0443

Phone: 260-563-3171 / Fax: 800-826-3487

Overseas Fax: 260-563-0167

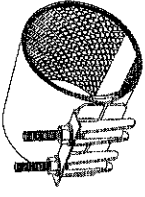
www.fordmeterbox.com

Submitted By:

02/01/2021

SUBMITTAL INFORMATION

Repair Clamps - (FS1-xxx-Length style)



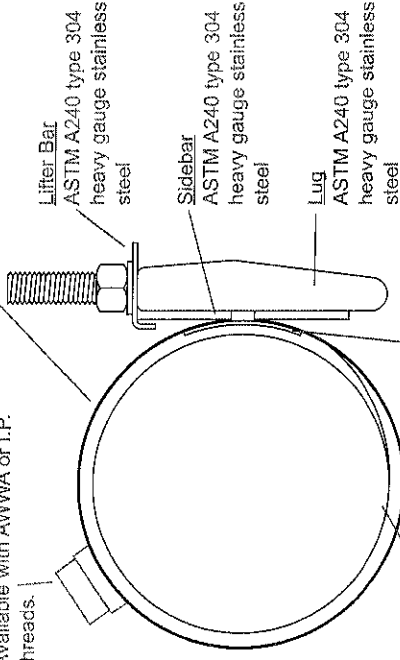
6" AND 8" ALL STAINLESS STEEL CIRCLE REPAIR CLAMPS

Optional Stainless Taps

ASTM A240 type 304 stainless steel tig welded to band. Available with AWWA or I.P. threads.

Band

ASTM A240 type 304 stainless steel



Armor

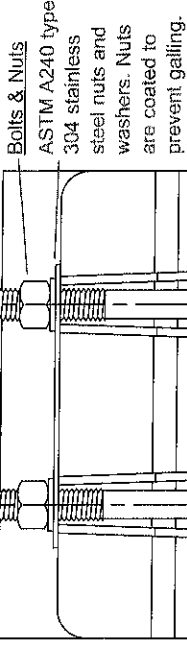
ASTM A240 type 304 heavy gauge stainless steel, mold bonded into the gasket to ensure uniform compression against the pipe

Gasket

Gridded virgin SBR compounded for water service, per ASTM D2000. Buna-N Nitrile is optional.



Length



OUTLET THREAD TAP CODE

CC (AWWA) THREAD		IP THREAD	
THREAD	CODE NUMBER	THREAD	CODE No.
3/4" CC	-CC3	3/4" IP	-IP3
1" CC	-CC4	1" IP	-IP4
1-1/4" CC	-CC5	1-1/4" IP	-IP5
1-1/2" CC	-CC6	1-1/2" IP	-IP6
2" CC	-CC7	2" IP	-IP7

NOM. PIPE SIZE	PIPE O.D. RANGE	LENGTH AND APPROXIMATE WEIGHT (LBS.)						BOLT SIZE	BAND THICKNESS	CATALOG NUMBER FS1-XXX-LENGTH	✓ SUBMITTED ITEM(S)
		7.5"	10"	12.5"	15"	20"	24"	30"	36"		
6"	5.95 - 6.35									FS1-635-	
	6.35 - 6.75									FS1-675-	
	6.56 - 6.96									FS1-696-	
	6.84 - 7.24	7	9	10	14	17	21	27	34	FS1-724-	
	7.05 - 7.45									FS1-745-	
	7.25 - 7.65									FS1-765-	
8"	7.45 - 7.85									FS1-785-	
	7.95 - 8.35									FS1-835-	
	8.54 - 8.94	8	10	11	15	19	24	30	39	FS1-894-	
	8.99 - 9.39									FS1-939-	
Number of Bolts		2	3	3	4	6	7	9	10	FS1-967-	

FEATURES

- Buna-N gasket and conductivity strips are available
- Also available in two-and three-section clamps for a wider range of pipe sizes and tolerances
- Optional outlet taps are available for repair of service line pull-outs. Add tapping code to catalog number
- All welds are fully passivated to restore corrosion resistant characteristics of stainless steel
- UL classified to ANSI/NSF Standard 61

The Ford Meter Box Company considers the information in this submittal form to be correct at the time of publication. Item and option availability, including specifications, are subject to change without notice. Please verify that your product information is current.



The Ford Meter Box Company, Inc.

P.O. Box 443, Wabash, Indiana U.S.A. 46992-0443

Phone: 260-563-3171 / Fax: 800-826-3487

Overseas Fax: 260-563-0167

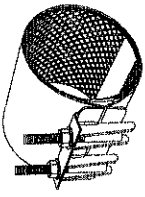
www.fordmeterbox.com

Submitted By:

09/16/16

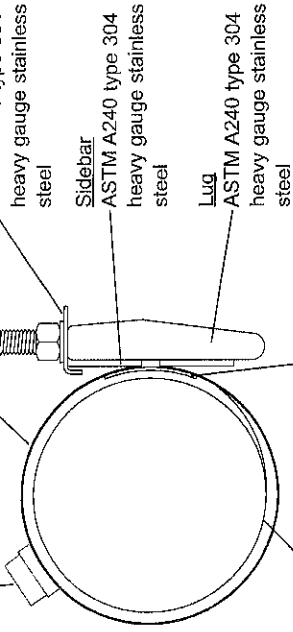
SUBMITTAL INFORMATION

Repair Clamps - (FS1-xxxx-Length style)



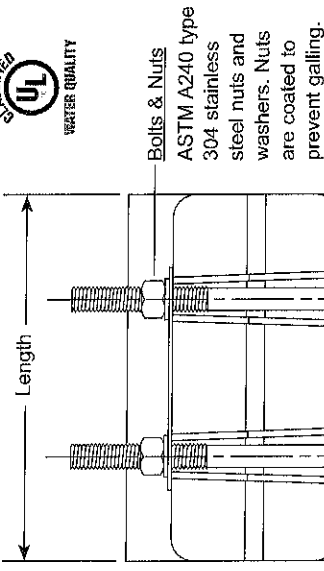
10" AND 12" ALL STAINLESS STEEL CIRCLE REPAIR CLAMPS

Optional Stainless Taps
ASTM A240 type 304 stainless steel tig welded to band. Available with AWWA or I.P. threads.



Gasket
Gridded virgin SBR compounded for water service, per ASTM D2000. NBR (Buna-N) is optional.

Armor
ASTM A240 type 304 heavy gauge stainless steel, mold bonded into the gasket to ensure uniform compression against the pipe



Bolts & Nuts
ASTM A240 type 304 stainless steel nuts and washers. Nuts are coated to prevent galling.

OUTLET THREAD TAP CODE

CC (AWWA) THREAD		IP THREAD	
THREAD	CODE NUMBER	THREAD	CODE NO.
3/4" CC	-CC3	3/4" IP	-IP3
1" CC	-CC4	1" IP	-IP4
1-1/4" CC	-CC5	1-1/4" IP	-IP5
1-1/2" CC	-CC6	1-1/2" IP	-IP6
2" CC	-CC7	2" IP	-IP7

NOM. PIPE SIZE	PIPE O.D. RANGE	LENGTH AND APPROXIMATE WEIGHT (LBS.)								BOLT SIZE	BAND THICKNESS	CATALOG NUMBER	✓ SUBMITTED ITEM(S)
		7.5"	10"	12.5"	15"	20"	24"	30"	36"				
10"	9.70 - 10.10											FS1-1010-Length	
	9.95 - 10.35											FS1-1035-L-length	
	10.64 - 11.04	11	14	16	24	28	32	42	49			FS1-1104-Length	
	11.04 - 11.44											FS1-1144-Length	
	11.34 - 11.74											FS1-1174-L-length	
12"	11.75 - 12.15											FS1-1215-Length	
	12.00 - 12.40											FS1-1240-Length	
	12.10 - 12.50											FS1-1250-Length	
	12.62 - 13.02											FS1-1302-Length	
	13.10 - 13.50	13	16	18	27	30	36	48	57	5/8" 11 UNC	20 GA.	FS1-1350-Length	
	13.40 - 13.80											FS1-1380-Length	
	13.70 - 14.10											FS1-1410-Length	
Number of Bolts		2	3	4	4	6	7	9	10			FS1-1440-L-length	

FEATURES

- NBR (Buna-N) gasket and conductivity strips are available
- Also available in two-and three-section clamps for a wider range of pipe sizes and tolerances
- Optional outlet taps are available for repair of service line pull-outs. Add tapping code to catalog number
- All welds are fully passivated to restore corrosion resistant characteristics of stainless steel
- UL classified to ANSI/NSF Standard 61

The Ford Meter Box Company considers the information in this submittal form to be correct at the time of publication. Item and option availability, including specifications, are subject to change without notice. Please verify that your product information is current.



The Ford Meter Box Company, Inc.

P.O. Box 443, Wabash, Indiana U.S.A. 46992-0443
Phone: 260-563-3171 / Fax: 800-826-3487
Overseas Fax: 260-563-0167
www.fordmeterbox.com

Submitted By:

11/10/17

SUBMITTAL INFORMATION

Repair Clamps - (FS1-xxx-Length style)

2" TO 4" ALL STAINLESS STEEL CIRCLE REPAIR CLAMPS

Optional Stainless Taps

ASTM A240 type 304 stainless steel tig welded to band. Available with AWWA or I.P. threads.

Lifter Bar
ASTM A240 type 304 heavy gauge stainless steel

Sidebar
ASTM A240 type 304 heavy gauge stainless steel

Lug
ASTM A240 type 304 heavy gauge stainless steel

Armor
ASTM A240 type 304 heavy gauge stainless steel, mold bonded into the gasket to ensure uniform compression against the pipe

Gasket
Gridded virgin SBR compounded for water service, per ASTM D2000. Buna-N Nitrile is optional.

Length

Bolts & Nuts
ASTM A240 type 304 stainless steel nuts and washers. Nuts are coated to prevent galling.

OUTLET THREAD TAP CODE

CC (AWWA) Thread				IP Thread			
THREAD	CODE NUMBER	MIN. CLAMP SZ.	THREAD	CODE NUMBER	MIN. CLAMP SZ.	THREAD	CODE NUMBER
3/4" CC	-CC3	2.63	3/4" IP	-IP3	2.63		
1" CC	-CC4	2.63	1" IP	-IP4	2.63		
1-1/4" CC	-CC5	3.70	1-1/4" IP	-IP5	3.70		
1-1/2" CC	-CC6	4.25	1-1/2" IP	-IP6	3.70		
2" CC	-CC7	4.73	2" IP	-IP7	4.25		

NOM. PIPE SIZE	PIPE O.D. RANGE	LENGTH AND APPROXIMATE WEIGHT (LBS.)										BOLT SIZE	BAND THICKNESS	CATALOG NUMBER FS1-XXX-LENGTH	SUBMITTED ITEM(S)
		4"	6"	7.5"	10"	12.5"	15"	20"	24"	30"					
2"	2.05 - 2.25	3	4	4	5	5	8	n/a	n/a	n/a				FS1-225-	
	2.35 - 2.63	N/A	4	4	5	5	8	n/a	n/a	n/a				FS1-263-	
2-1/4" - 2-1/2"	2.70 - 3.00	N/A	4	5	5	6	8	n/a	n/a	n/a				FS1-300-	
	2.97 - 3.25													FS1-325-	
	3.42 - 3.66													FS1-366-	
	3.46 - 3.70													FS1-370-	
	3.73 - 4.00													FS1-400-	
3"	3.96 - 4.25													FS1-425-	
	4.06 - 4.35													FS1-435-	
	4.37 - 4.65													FS1-465-	
	4.45 - 4.73													FS1-473-	
	4.50 - 4.80													FS1-480-	
4"	4.74 - 5.14													FS1-514-	
	4.95 - 5.35													FS1-535-	
	5.22 - 5.62													FS1-562-	
Number of Bolts		1	2	2	3	3	4	6	6	9					

FEATURES

- Buna-N gasket and conductivity strips are available
- Also available in two-and three-section clamps for a wider range of pipe sizes and tolerances
- Optional outlet taps are available for repair of service line pull-outs. Add tapping code to catalog number
- All welds are fully passivated to restore corrosion resistant characteristics of stainless steel
- UL classified to ANSI/NSF Standard 61

The Ford Meter Box Company considers the information in this submittal form to be correct at the time of publication. Item and option availability, including specifications, are subject to change without notice. Please verify that your product information is current.



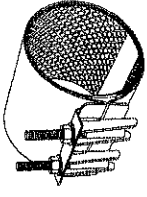
The Ford Meter Box Company, Inc.
P.O. Box 443, Wabash, Indiana U.S.A. 46992-0443
Phone: 260-563-3171 / Fax: 800-826-3487
Overseas Fax: 260-563-0167
www.fordmeterbox.com

Submitted By:

11/07/16

SUBMITTAL INFORMATION

Repair Clamps - (FS1-xxx-Length style)



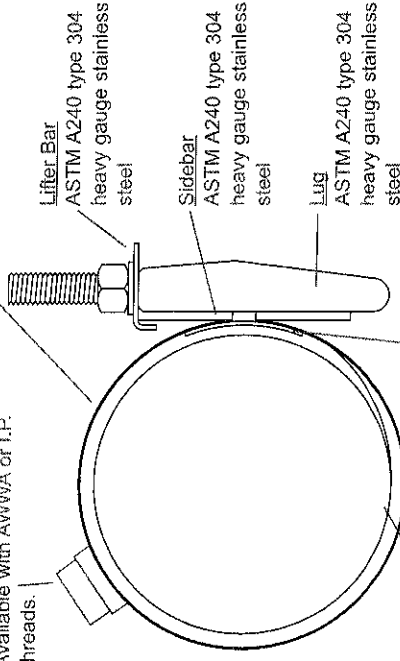
6" AND 8" ALL STAINLESS STEEL CIRCLE REPAIR CLAMPS

Optional Stainless Taps

ASTM A240 type 304 stainless steel tig welded to band. Available with AWWA or I.P. threads.

Band

ASTM A240 type 304 stainless steel



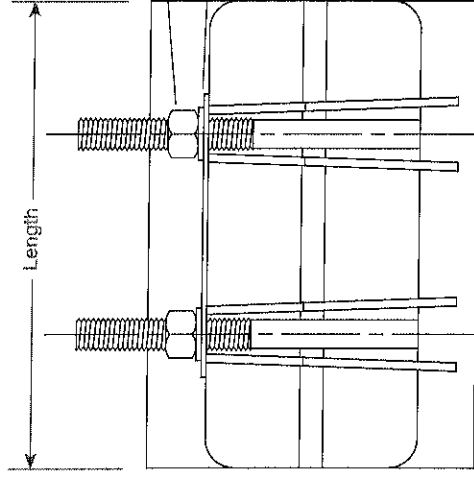
Gasket
Gridded virgin SBR compounded for water service, per ASTM D2000. Buna-N Nitrile is optional.

Armor
ASTM A240 type 304 heavy gauge stainless steel, mold bonded into the gasket to ensure uniform compression against the pipe

Lifter Bar
ASTM A240 type 304 heavy gauge stainless steel

Sidebar
ASTM A240 type 304 heavy gauge stainless steel

Lug
ASTM A240 type 304 heavy gauge stainless steel



Bolts & Nuts
ASTM A240 type 304 stainless steel nuts and washers. Nuts are coated to prevent galling.

OUTLET THREAD TAP CODE

CC (AWWA) THREAD		IP THREAD	
THREAD	CODE NUMBER	THREAD	CODE NO.
3/4" CC	-CC3	3/4" IP	-IP3
1" CC	-CC4	1" IP	-IP4
1-1/4" CC	-CC5	1-1/4" IP	-IP5
1-1/2" CC	-CC6	1-1/2" IP	-IP6
2" CC	-CC7	2" IP	-IP7

NOM. PIPE SIZE	PIPE O.D. RANGE	LENGTH AND APPROXIMATE WEIGHT (LBS.)						BOLT SIZE	BAND THICKNESS	CATALOG NUMBER FS1-XXX-LENGTH	✓ SUBMITTED ITEM(S)
		7.5"	10"	12.5"	15"	20"	24"	30"	36"		
6"	5.95 - 6.35									FS1-635-	
	6.35 - 6.75									FS1-675-	
	6.56 - 6.96									FS1-696-	
	6.84 - 7.24	7	9	10	14	17	21	27	34	FS1-724-	
	7.05 - 7.45									FS1-745-	
	7.25 - 7.65									FS1-765-	
8"	7.45 - 7.85									FS1-785-	
	7.95 - 8.35									FS1-835-	
	8.54 - 8.94	8	10	11	15	19	24	30	39	FS1-894-	
	8.99 - 9.39									FS1-939-	
Number of Bolts		2	3	3	4	6	7	9	10	FS1-967-	

FEATURES

- Buna-N gasket and conductivity strips are available
- Also available in two-and three-section clamps for a wider range of pipe sizes and tolerances
- Optional outlet taps are available for repair of service line pull-outs. Add tapping code to catalog number
- All welds are fully passivated to restore corrosion resistant characteristics of stainless steel
- UL classified to ANSI/NSF Standard 61

The Ford Meter Box Company considers the information in this submittal form to be correct at the time of publication. Item and option availability, including specifications, are subject to change without notice. Please verify that your product information is current.



The Ford Meter Box Company, Inc.

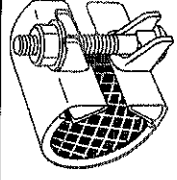
P.O. Box 443, Wabash, Indiana U.S.A. 46992-0443
Phone: 260-563-3171 / Fax: 800-826-3487
Overseas Fax: 260-563-0167
www.fordmeterbox.com

Submitted By:

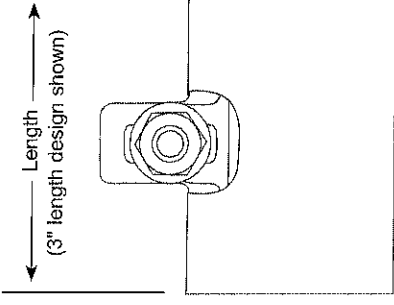
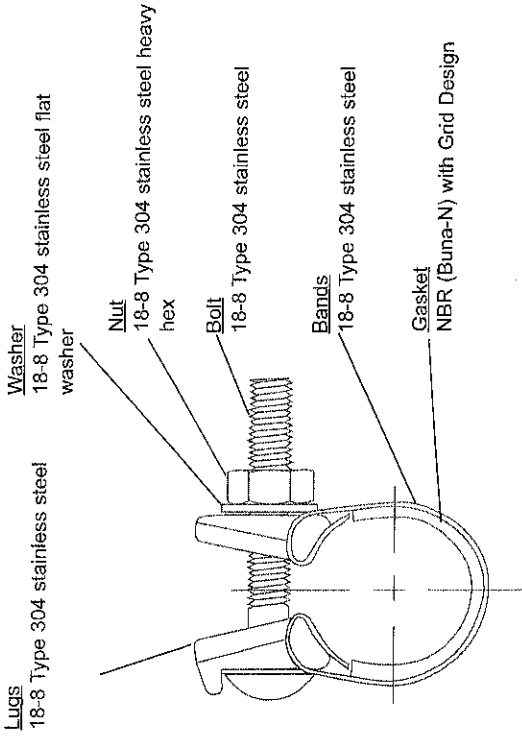
09/16/16

SUBMITTAL INFORMATION

Snap Clamps - (FLSC-xxx-x style)



ALL STAINLESS STEEL REPAIR CLAMPS FOR SMALL LEAKS



NOM. PIPE SIZE	PIPE O.D. RANGE	LENGTH AND APPROXIMATE WEIGHT (LBS.)				BOLT SIZE	CATALOG NUMBER FLSC-XXX-LENGTH*	✓ SUBMITTED ITEM(S)
		3"	6"	9"	12"			
1/2"	0.08	0.6	1.21	-	-	3/8"x3-1/2"	FLSC-084-	
3/4"	1.05	0.65	1.28	1.91	2.4		FLSC-105-	
1"	1.32	0.66	1.31	2.0	2.5		FLSC-132-	
1-1/4"	1.66	0.73	1.42	2.15	-		FLSC-166-	
1-1/2"	1.90	0.74	1.44	2.75	2.86		FLSC-190-	
2"	2.38	1.0	2.0	3.2	4.0	7/16"x4"	FLSC-238	
2-1/2"	2.88	1.0	2.2	3.3	4.2		FLSC-288	
3"	3.50	1.4	2.6	4.0	5.2		FLSC-350-	
3-1/2"	4.00	1.4	2.7	4.2	5.4		FLSC-400-	
4"	4.50	1.4	2.8	4.2	5.6		FLSC-450-	
5"	5.56	1.6	3.0	4.8	6.4		FLSC-556-	
6"	6.00	1.9	3.5	5.0	6.7		FLSC-600-	
7"	6.63	2.2	3.7	5.6	7.4		FLSC-663-	
8"	8.00	2.2	4.4	6.6	8.0		FLSC-800-	
	8.63	2.5	4.9	6.9	8.8		FLSC-863-	
Number of Bolts		1	2	3	4			

*Add length option (3, 6, 9, or 12) to complete catalog number. Example: FLSC-084-3

FEATURES

- Drop-in bolt design allows bolts to remain attached - no loose parts to lose in the ditch
- Gaskets are heavy-grid design and extend lug to lug (3.50" and 4.50" gaskets do not extend lug to lug)

The Ford Meter Box Company considers the information in this submittal form to be correct at the time of publication. Item and option availability, including specifications, are subject to change without notice. Please verify that your product information is current.



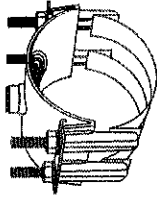
The Ford Meter Box Company, Inc.
P.O. Box 443, Wabash, Indiana U.S.A. 46992-0443
Phone: 260-563-3171 / Fax: 800-826-3487
Overseas Fax: 260-563-0167
www.fordmeterbox.com

Submitted By:

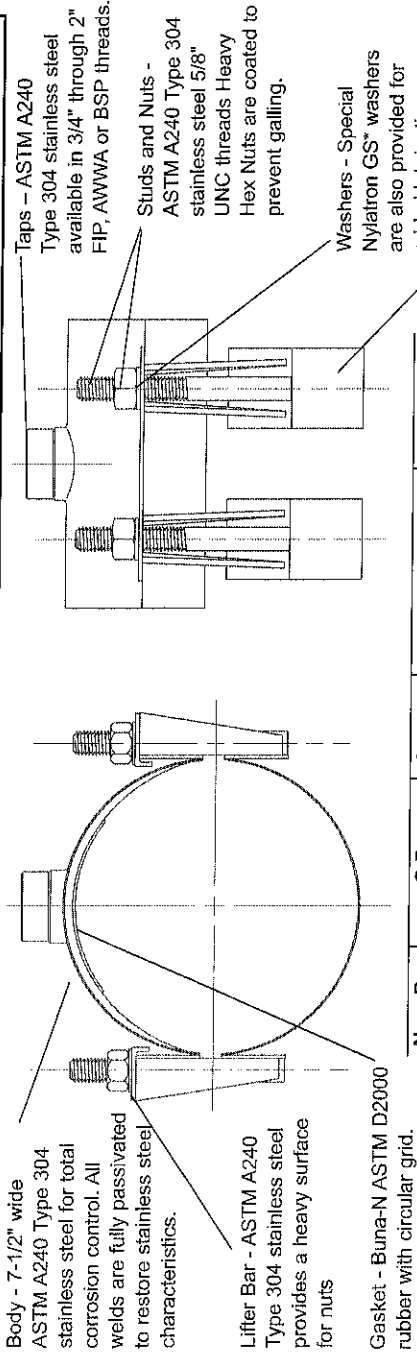
10/03/18

SUBMITTAL INFORMATION

Stainless Steel Saddle- (FRS202-xxx-xxx style)



STAINLESS STEEL DOUBLE BAND REPAIR SADDLES



NOM. PIPE SIZE	O.D. RANGE	APPROX. WT. LBS.	CATALOG NUMBER	✓ SUBMITTED ITEM(S)
4"	4.75 - 5.35	7.4	FRS202-535-Tap	
6"	6.85 - 7.60	7.8	FRS202-760-Tap	
8"	9.00 - 9.79	8.3	FRS202-979-Tap	
10"	11.00 - 11.80	8.8	FRS202-1180-Tap	
	11.50 - 12.25	8.9	FRS202-1225-Tap	
12"	13.10 - 13.90	9.2	FRS202-1390-Tap	
	13.60 - 14.40	9.3	FRS202-1440-Tap	
14"	15.20 - 16.00	9.4	FRS202-1600-Tap	
16"	17.20 - 18.00	10.0	FRS202-1800-Tap	
18"	19.20 - 20.00	12.5	FRS202-2000-Tap	
20"	21.40 - 22.20	13.1	FRS202-2220-Tap	
24"	23.20 - 24.00	13.6	FRS202-2400-Tap	
	25.60 - 26.40	15.7	FRS202-2640-Tap	
30	31.30 - 32.00	16.2	FRS202-3200-Tap	
	32.00 - 32.80	17.4	FRS202-3280-Tap	
36	35.40 - 36.20	18.8	FRS202-3520-Tap	
	37.50 - 38.30	19.7	FRS202-3830-Tap	

OUTLET TAP CODE

CC (AWWA) THREAD		IP THREAD	
THREAD	CODE NUMBER / SUBMITTED ITEM(S)	THREAD	CODE NUMBER / SUBMITTED ITEM(S)
3/4" CC	CC3	3/4" IP	IP3
1" CC	CC4	1" IP	IP4
1-1/4" CC	CC5	1-1/4" IP	IP5
1-1/2" CC	CC6	1-1/2" IP	IP6
2" CC	CC7	2" IP	IP7

BSP THREAD	
THREAD	CODE NUMBER / SUBMITTED ITEM(S)
3/4" IP	BSP3
1" IP	BSP4
1-1/4" IP	BSP5
1-1/2" IP	BSP6
2" IP	BSP7

To Order: Select the catalog number for the desired pipe range and complete the catalog number by adding the outlet thread tap code. Example: A double band repair saddle for 9.79 O.D. pipe with a 3/4" CC thread would be FRS202-979-CC3.

FEATURES

- 7-1/2" Wide Body, Bands and 5/8" NC threaded studs are made of ASTM A240 Type 304 stainless steel. All welds are fully passivated for corrosion resistance
- Gasket is tapered Buna-N rubber (ASTM D2000) with circular grid

The Ford Meter Box Company considers the information in this submittal form to be correct at the time of publication. Item and option availability, including specifications, are subject to change without notice. Please verify that your product information is current.



The Ford Meter Box Company, Inc.
P.O. Box 443, Wabash, Indiana U.S.A. 46992-0443
Phone: 260-563-3171 / Fax: 800-826-3487
Overseas Fax: 260-563-0167
<http://www.fordmeterbox.com>

Submitted By:

01/20/11

CIMSCO, INC.
1840 L & A ROAD
METAIRIE, LA 70001

STANDARD INSURANCE REQUIREMENTS FOR BIDDING PURPOSES

All required insurance under this bid shall conform to Jefferson Parish Resolution No. 113646 or No. 113647, as applicable. Contractors may not commence any work under any ensuing contract unless and until all required insurance and associated evidentiary requirements thereto have been met, along with any additional specifications contained in the **Invitation to Bid**. Except as where otherwise precluded by law, the Parish Attorney or his designee, with the concurrence of the Director of Risk Management or his designee, may agree on a case-by-case basis, to deviate from Jefferson Parish's standard insurance requirements, as provided in this Section. Vendors requesting deviation therefrom shall submit such requests in writing, along with compelling substantiation, to the Purchasing Department prior to the bid's due date. Any changes to the insurance requirements will be reflected in the bid specifications and addenda. Prior to contract execution and at all times thereafter during the term of such contract, contractors must provide and continuously maintain all coverages as required by the foregoing Resolutions, and the contract documents. Failure to do so shall be grounds for suspension, discontinuation or termination of the contract.

For bidding purposes, bidders must submit with bid submission a current (valid) insurance certificate evidencing the required coverages. Failure to comply will cause bid to be rejected. The current insurance certificate will be used for proof of insurance at time of evaluation. Thereafter, and prior to contract execution, the low bidder will be required to provide final insurance certificates to the Parish which shall name **the Jefferson Parish, its Districts Departments and Agencies under the direction of the Parish President and the Parish Council** as additional insureds regarding negligence by the contractor for the Commercial General Liability and the Comprehensive Automobile Liability policies. Additionally, said certificates should reflect the name of the Parish Department receiving goods and services and reference the respective Jefferson Parish bid number.

JEFFERSON PARISH REQUIRED STANDARD INSURANCE

☒ WORKER'S COMPENSATION INSURANCE

As required by Louisiana State Statute, exception; Employer's Liability, Section B shall be \$1,000,000 per occurrence when Work is to be over water and involves maritime exposures to cover all employees not covered under the State Worker's Compensation Act, otherwise this limit shall be no less than \$500,000 per occurrence.

Note: If your company is not required by law to carry workmen's compensation insurance, i.e. not a Louisiana company, sole employee of the company, then bidders must request a workmen's compensation insurance declaration affidavit prior to the bid opening date. This insurance declaration affidavit must be fully completed, signed, properly notarized and submitted with the bid. A scanned copy may be submitted with the bid; however, the successful bidder must submit the original affidavit in its original format and without material alteration upon contract execution. Failure to comply will result in the bid submission being

rejected as non-responsive. The Parish reserves the right to award bid to the next lowest responsive and responsible bidder in this event.

☒ COMMERCIAL GENERAL LIABILITY

Shall provide limits not less than the following: \$1,000,000.00 Combined Single Limit per Occurrence for bodily injury and property damage.

☒ COMPREHENSIVE AUTOMOBILE LIABILITY

Bodily injury liability \$1,000,000.00 each person; \$1,000,000.00 each occurrence.
Property Damage Liability \$1,000,000.00 each occurrence.

Note: This category may be omitted if bidders do not/will not utilize company vehicles for the project or do not possess company vehicles. Bidder must request an automobile insurance declaration affidavit prior to the bid opening date. This insurance declaration affidavit must be fully completed, signed, properly notarized and submitted with the bid. A scanned copy of the completed, signed and properly notarized affidavit may be submitted with the bid; however, the successful bidder must submit the original affidavit in its original format and without material alteration upon contract execution. Failure to comply will result in the bid submission being rejected as non-responsive. The Parish reserves the right to award bid to the next lowest responsive and responsible bidder in this event.

DEDUCTIBLES - The Parish Attorney with concurrence of the Director of Risk Management have waived the deductible section of the Terms and Conditions for all Invitations to Bid, until further notice.

UMBRELLA LIABILITY COVERAGE

An umbrella policy or excess may be used to meet minimum requirements.

FOR CONSTRUCTION AND RENOVATION PROJECTS:

The following are required if selected below. Such insurance is due upon contract execution.

☐ OWNER'S PROTECTIVE LIABILITY

To be for the same limits of liability for bodily injury and property damage liability established for commercial general liability.

☐ BUILDER'S RISK INSURANCE

The contractor shall maintain Builder's Risk Insurance at his own expense to insure both the owner (Parish of Jefferson) and contractor as their interest may appear.

CLAMP, SADDLES, AND TAPPING SLEEVES

CONTRACT

ITEMS INCLUDED IN THIS CONTRACT:

1. FULL CIRCLE CLAMP (SINGLE BAND CLAMP)
2. FULL CIRCLE CLAMP (DOUBLE BAND CLAMP)
3. FULL CIRCLE CLAMP (SINGLE BAND CLAMP WITH TAP)
4. FULL CIRCLE CLAMP (DOUBLE BAND CLAMP WITH TAP)
5. DOUBLE STRAP SERVICE SADDLE CLAMP WITH TAP

CONTRACT TERMS:

THIS IS A ONE YEAR CONTRACT FOR SUPPLY OF CLAMPS, SADDLES, AND TAPPING SLEEVES FOR THE DEPARTMENT OF WATER AND SEWER, AND ALL JEFFERSON PARISH AGENCIES AND MUNICIPALITIES.

WARRANTY:

PRODUCTS SHALL BE WARRANTED THAT THEY ARE MANUFACTURED IN ACCORDANCE WITH THE APPLICABLE MATERIAL SPECIFICATIONS AND ARE FREE FROM DEFECTS IN WORKMANSHIP AND MATERIALS FOR ONE YEAR AFTER DELIVERY. ANY DEFECTIVE ITEMS SOLD UNDER THIS CONTRACT SHALL BE REPLACED AT NO COST TO THE PURCHASER.

GENERAL SPECIFICATIONS:

THIS SPECIFICATION IS PREPARED FOR A ONE (1) YEAR CONTRACT FOR A SUPPLY OF CLAMPS, SADDLES, AND TAPPING SLEEVES FOR THE PARISH OF JEFFERSON, DEPARTMENT OF SEWERAGE, EAST AND WEST BANK.

THE QUANTITIES SHOWN ON THE PROPOSAL GUIDE ARE APPROXIMATE QUANTITIES TO BE ACQUIRED BY JEFFERSON PARISH OVER A ONE (1) YEAR PERIOD. ACTUAL USAGE WILL BE ON AN "AS NEEDED" BASIS.

ALL PERTINENT TECHNICAL SPECIFICATIONS AND LITERATURE MAY BE REQUIRED UPON REQUEST. SHOULD TECHNICAL SPECIFICATIONS AND LITERATURE BE REQUESTED, BIDDER(S) WILL BE REQUIRED TO SUBMIT SAID TECHNICAL SPECIFICATIONS AND LITERATURE WITHIN TEN (10) DAYS OF THE REQUEST.

BID PRICE SHALL INCLUDE ALL FREIGHT AND DELIVERY COSTS TO JEFFERSON PARISH WAREHOUSE LOCATIONS ON THE EAST AND WEST BANKS OF JEFFERSON PARISH.

THE SUCCESSFUL BIDDER SHALL NOT SUBSTITUTE ANY ITEMS ON THIS BID THROUGHOUT THE ONE (1) YEAR PERIOD WITHOUT THE WRITTEN CONSENT OF THE JEFFERSON PARISH ENGINEERING DEPT.

TECHNICAL SPECIFICATIONS:

I. FULL CIRCLE CLAMP (SINGLE BAND CLAMP):

THE CLAMP IS TO HAVE AN ANTIOXIDANT/ANTIOZANANT AGENT TO EXCEED SHELF LIFE, TO MEET OR EXCEED ASTM D2000 AA415 STANDARDS. THE CLAMP IS TO BE FULLY PASSIVATED AND IS TO HAVE A WORKING PRESSURE OF 150 PSI.

CLAMPS SHALL BE AVAILABLE FOR NOMINAL PIPE SIZES OF 2 INCH TO 12 INCH AND THE WIDTHS SHALL RANGE FROM 6 INCHES TO 20 INCHES.

OUTSIDE DIAMETER (O.D.) RANGES ARE TO BE MET OR EXCEEDED.

- **SHELL/BAND:**

SHELL/BAND SHALL BE MADE OF 18-8 24 GA STAINLESS STEEL FOR ½" THROUGH 2 INCH, 22 GA FOR 2-1/2 INCH THROUGH 4 INCH, 20 GA FOR 6 INCH, 18 GA FOR 8 INCH THROUGH 20 INCH, AND 16 GA FOR 24 INCH AND ABOVE. BRIDGE PLATE IS TO BE GLUED, RECESSED AND FLUSH FORMED INTO THE GASKET DURING MOLDING.

- **LUGS:**

LUGS SHALL BE 18-8, 8 GA STAINLESS STEEL.

- **BAR:**

BAR SHALL BE 18-8, 10 GA STAINLESS STEEL.

- **PLATE:**

PLATE SHALL BE 18-8, 12 GA STAINLESS STEEL.

- **STUD/BOLTS/NUTS:**

STUDS, BOLTS, AND NUTS SHALL BE 18-8 STAINLESS STEEL OF AT LEAST 5/8 INCH-11 Xylan OR TEFLON COATED, BAKED TEFLON COATED COR-TEN NUT.

- WASHER:

WASHERS SHALL BE 1/16 INCH BY 1-1/4 INCH NYLON.

- GASKET:

GASKETS ARE RECOMMENDED FOR USE ON POTABLE WATER LINES, LAP TYPE FINE GRIDDLE VIRGIN SBR RUBBER MATERIAL WITH TAPERED ENDS FOR USE IN SALTY AND ACIDIC SOILS WITH TEMPERATURE RANGES OF -40 DEGREES TO 150 DEGREES FAHRENHEIT.

- MARKINGS:

EACH CLAMP IS TO HAVE THE MANUFACTURER'S NAME, PART NUMBER WITH FULL O.D. RANGE, AND DATE OF MANUFACTURE.

II. FULL CIRCLE CLAMP (DOUBLE BAND CLAMP):

THE CLAMP IS TO HAVE AN ANTIOXIDANT/ANTIOZANANT AGENT TO EXCEED SHELF LIFE, TO MEET OR EXCEED ASTM D2000 AA415 STANDARDS. THE CLAMP IS TO BE FULLY PASSIVATED AND IS TO HAVE A WORKING PRESSURE OF 150 PSI.

CLAMPS SHALL BE AVAILABLE FOR NOMINAL PIPE SIZES OF 12 INCH TO 26 INCH AND THE WIDTHS SHALL RANGE FROM 20 INCHES TO 24 INCHES.

OUTSIDE DIAMETER (O.D.) RANGES ARE TO BE MET OR EXCEEDED.

- SHELL/BAND:

SHELL/BAND SHALL BE MADE OF 18-8 24 GA STAINLESS STEEL FOR 1/2" THROUGH 2 INCH, 22 GA FOR 2-1/2 INCH THROUGH 4 INCH, 20 GA FOR 6 INCH, 18 GA FOR 8 INCH THROUGH 20 INCH, AND 16 GA FOR 24 INCH AND ABOVE. BRIDGE PLATE IS TO BE GLUED, RECESSED AND FLUSH FORMED INTO THE GASKET DURING MOLDING.

- LUGS:

LUGS SHALL BE 18-8, 8 GA STAINLESS STEEL.

- BAR:
BAR SHALL BE 18-8, 10 GA STAINLESS STEEL.
- PLATE:
PLATE SHALL BE 18-8, 12 GA STAINLESS STEEL.
- STUD/BOLTS/NUTS:
STUDS, BOLTS, AND NUTS SHALL BE 18-8 STAINLESS STEEL OF AT LEAST 5/8 INCH- XYLAN OR TEFLON COATED, BAKED TEFLON COATED COR-TEN NUT.
- WASHER:
WASHERS SHALL BE 1/16 INCH BY 1-1/4 INCH NYLON.
- GASKET:
GASKETS ARE RECOMMENDED FOR USE ON POTABLE WATER LINES, LAP TYPE FINE GRIDDLE VIRGIN SBR RUBBER MATERIAL WITH TAPERED ENDS FOR USE IN SALTY AND ACIDIC SOILS WITH TEMPERATURE RANGES OF -40 DEGREES TO 150 DEGREES FAHRENHEIT.
- MARKINGS:
EACH CLAMP IS TO HAVE THE MANUFACTURER'S NAME, PART NUMBER WITH FULL O.D. RANGE, AND DATE OF MANUFACTURE.

III. FULL CIRCLE CLAMP WITH TAP (SINGLE BAND CLAMP):

THE CLAMP IS TO HAVE AN ANTIOXIDANT/ANTIOZANANT AGENT TO EXCEED SHELF LIFE, TO MEET OR EXCEED ASTM D2000 AA415 STANDARDS. THE CLAMP IS TO BE FULLY PASSIVATED AND IS TO HAVE A WORKING PRESSURE OF 150 PSI.

CLAMPS SHALL BE AVAILABLE FOR NOMINAL PIPE SIZES OF 1-1/2 INCH TO 12 INCH AND THE WIDTHS SHALL RANGE FROM 12 INCHES TO 20 INCHES. CLAMPS SHALL BE AVAILABLE IN A 3/4, 1, AND 2 INCH TAP.

OUTSIDE DIAMETER (O.D.) RANGES ARE TO BE MET OR EXCEEDED.

- **SHELL/BAND:**

SHELL/BAND SHALL BE MADE OF 18-8 24 GA STAINLESS STEEL FOR ½" THROUGH 2 INCH, 22 GA FOR 2-1/2 INCH THROUGH 4 INCH, 20 GA FOR 6 INCH, 18 GA FOR 8 INCH THROUGH 20 INCH, AND 16 GA FOR 24 INCH AND ABOVE. BRIDGE PLATE IS TO BE GLUED, RECESSED AND FLUSH FORMED INTO THE GASKET DURING MOLDING.

- **LUGS:**

LUGS SHALL BE 18-8, 8 GA STAINLESS STEEL.

- **BAR:**

BAR SHALL BE 18-8, 10 GA STAINLESS STEEL.

- **PLATE:**

PLATE SHALL BE 18-8, 12 GA STAINLESS STEEL.

- **STUD/BOLTS/NUTS:**

STUDS, BOLTS, AND NUTS SHALL BE 18-8 STAINLESS STEEL OF AT LEAST 5/8 INCH- XYLAN OR TEFLON COATED, BAKED TEFLON COATED COR-TEN NUT.

- **WASHER:**

WASHERS SHALL BE 1/16 INCH BY 1-1/4 INCH NYLON.

- **GASKET:**

GASKETS ARE RECOMMENDED FOR USE ON POTABLE WATER LINES, LAP TYPE FINE GRIDDLE VIRGIN SBR RUBBER MATERIAL WITH TAPERED ENDS FOR USE IN SALTY AND ACIDIC SOILS WITH TEMPERATURE RANGES OF -40 DEGREES TO 150 DEGREES FAHRENHEIT.

- **MARKINGS:**

EACH CLAMP IS TO HAVE THE MANUFACTURER'S NAME, PART NUMBER WITH FULL O.D. RANGE, AND DATE OF MANUFACTURE.

IV. FULL CIRCLE CLAMP WITH TAP (DOUBLE BAND CLAMP):

THE CLAMP IS TO HAVE AN ANTIOXIDANT/ANTIOZANANT AGENT TO EXCEED SHELF LIFE, TO MEET OR EXCEED ASTM D2000 AA415 STANDARDS. THE CLAMP IS TO BE FULLY PASSIVATED AND IS TO HAVE A WORKING PRESSURE OF 150 PSI.

CLAMPS SHALL BE AVAILABLE FOR NOMINAL PIPE SIZES OF 2 INCH TO 14 INCH AND THE WIDTHS SHALL RANGE FROM 6 INCHES TO 20 INCHES. CLAMPS SHALL BE AVAILABLE IN A $\frac{3}{4}$, 1, AND 2 INCH TAP.

OUTSIDE DIAMETER (O.D.) RANGES ARE TO BE MET OR EXCEEDED.

- **SHELL/BAND:**

SHELL/BAND SHALL BE MADE OF 18-8 24 GA STAINLESS STEEL FOR $\frac{1}{2}$ " THROUGH 2 INCH, 22 GA FOR 2-1/2 INCH THROUGH 4 INCH, 20 GA FOR 6 INCH, 18 GA FOR 8 INCH THROUGH 20 INCH, AND 16 GA FOR 24 INCH AND ABOVE. BRIDGE PLATE IS TO BE GLUED, RECESSED AND FLUSH FORMED INTO THE GASKET DURING MOLDING.

- **LUGS:**

LUGS SHALL BE 18-8, 8 GA STAINLESS STEEL.

- **BAR:**

BAR SHALL BE 18-8, 10 GA STAINLESS STEEL.

- **PLATE:**

PLATE SHALL BE 18-8, 12 GA STAINLESS STEEL.

- **STUD/BOLTS/NUTS:**

STUDS, BOLTS, AND NUTS SHALL BE 18-8 STAINLESS STEEL OF AT LEAST 5/8 INCH- XYLAN OR TEFLON COATED, BAKED TEFLON COATED COR-TEN NUT.

- **WASHER:**

WASHERS SHALL BE 1/16 INCH BY 1-1/4 INCH NYLON.

- **GASKET:**

GASKETS ARE RECOMMENDED FOR USE ON POTABLE WATER LINES, LAP TYPE FINE GRIDDLE VIRGIN SBR RUBBER MATERIAL WITH TAPERED ENDS FOR USE IN SALTY AND ACIDIC SOILS WITH TEMPERATURE RANGES OF -40 DEGREES TO 150 DEGREES FAHRENHEIT.

- **MARKINGS:**

EACH CLAMP IS TO HAVE THE MANUFACTURER'S NAME, PART NUMBER WITH FULL O.D. RANGE, AND DATE OF MANUFACTURE.

V. SADDLE, DOUBLE STRAP CLAMP WITH TAP:

THE FOLLOWING ARE ALL STAINLESS STEEL DOUBLE STRAP SERVICE SADDLES (DSC) AND FULL FACED GASKET WITH DOUBLE BOLTS. SADDLES SHALL BE TIG WELDED TO MEET ASTM A380.

THE CLAMP IS TO HAVE AN ANTIOXIDANT/ANTIOZANANT AGENT TO EXCEED SHELF LIFE, TO MEET OR EXCEED ASTM D2000 AA415 STANDARD WITH ¾ INCH TAP. THE CLAMP IS TO BE FULLY PASSIVATED AND IS TO HAVE A WORKING PRESSURE OF 150 PSI.

CLAMPS SHALL BE AVAILABLE FOR NOMINAL PIPE SIZES OF 4 INCH TO 16 INCH AND THE WIDTHS SHALL BE 8 INCHES. CLAMPS SHALL BE AVAILABLE IN A ¾, 1, AND 2 INCH TAP.

OUTSIDE DIAMETER (O.D.) RANGES ARE TO BE MET OR EXCEEDED.

- **OUTLET/TAP:**

OUTLET AND TAP SHALL BE 18-8 STAINLESS, CC/AWWA TAPER THREADS WITH TEFLON COATINGS TO PREVENT GALLING.

- **SADDLE:**

SADDLE SHALL BE 18-8, 16 GA STAINLESS STEEL.

- **BANDS:**

BANDS SHALL BE 18-8 STAINLESS STEEL 2 INCH WIDE, 20 GA UP TO 10 INCH AND 18 GA FOR LARGER DIAMETERS.

- **LUGS:**

LUGS SHALL BE 18-8, 8 GA STAINLESS STEEL.

- BAR:

BAR SHALL BE 18-8, 10 GA STAINLESS STEEL.

- PLATE:

PLATE SHALL BE 18-8, 12 GA STAINLESS STEEL.

- STUD/BOLTS/NUTS:

STUDS, BOLTS, AND NUTS SHALL BE 18-8 STAINLESS STEEL OF AT LEAST 5/8 INCH-11 Xylan OR TEFLON COATED, BAKED TEFLON COATED COR-TEN NUTS.

- WASHER:

WASHERS SHALL BE 1/16 INCH BY 1-1/4 INCH NYLON.

- GASKET:

GASKETS ARE RECOMMENDED FOR USE ON POTABLE WATER LINES, LAP TYPE FINE GRIDDLE VIRGIN SBR RUBBER MATERIAL WITH TAPERED ENDS FOR USE IN SALTY AND ACIDIC SOILS WITH TEMPERATURE RANGES OF -40 DEGREES TO 150 DEGREES FAHRENHEIT.

- MARKINGS:

EACH CLAMP IS TO HAVE THE MANUFACTURER'S NAME, PART NUMBER WITH FULL O.D. RANGE, AND DATE OF MANUFACTURE.

CORPORATE RESOLUTION

EXCERPT FROM MINUTES OF MEETING OF THE BOARD OF DIRECTORS OF
CMS60 Inc.

INCORPORATED.

AT THE MEETING OF DIRECTORS OF CMSCO, INC.
INCORPORATED, DULY NOTICED AND HELD ON April 6, 2021,
A QUORUM BEING THERE PRESENT, ON MOTION DULY MADE AND SECONDED. IT
WAS:

RESOLVED THAT Timothy Randall, BE AND IS HEREBY
APPOINTED, CONSTITUTED AND DESIGNATED AS AGENT AND ATTORNEY-IN-
FACT OF THE CORPORATION WITH FULL POWER AND AUTHORITY TO ACT ON
BEHALF OF THIS CORPORATION IN ALL NEGOTIATIONS, BIDDING, CONCERNS
AND TRANSACTIONS WITH THE PARISH OF JEFFERSON OR ANY OF ITS AGENCIES,
DEPARTMENTS, EMPLOYEES OR AGENTS, INCLUDING BUT NOT LIMITED TO, THE
EXECUTION OF ALL BIDS, PAPERS, DOCUMENTS, AFFIDAVITS, BONDS, SURETIES,
CONTRACTS AND ACTS AND TO RECEIVE ALL PURCHASE ORDERS AND NOTICES
ISSUED PURSUANT TO THE PROVISIONS OF ANY SUCH BID OR CONTRACT, THIS
CORPORATION HEREBY RATIFYING, APPROVING, CONFIRMING, AND ACCEPTING
EACH AND EVERY SUCH ACT PERFORMED BY SAID AGENT AND ATTORNEY-IN-
FACT.

I HEREBY CERTIFY THE FOREGOING TO BE
A TRUE AND CORRECT COPY OF AN
EXCERPT OF THE MINUTES OF THE ABOVE
DATED MEETING OF THE BOARD OF
DIRECTORS OF SAID CORPORATION, AND
THE SAME HAS NOT BEEN REVOKED OR
RESCINDED.

Cheryl E. Luvier
SECRETARY/TREASURER

6/15/21
DATE

Non-Public Works Bid Affidavit Instructions

- Affidavit is supplied as a courtesy to Affiants, but it is the responsibility of the affiant to insure the affidavit they submit to Jefferson Parish complies, in both form and content, with federal, state and parish laws.
- Affidavit must be signed by an authorized representative of the entity or the affidavit will not be accepted.
- Affidavit must be notarized or the affidavit will not be accepted.
- Notary must sign name, print name, and include bar/notary number, or the affidavit will not be accepted.
- Affiant **MUST** select either A or B when required or the affidavit will not be accepted.
- Affiants who select choice A must include an attachment or the affidavit will not be accepted.
- If both choice A and B are selected, the affidavit will not be accepted.
- Affidavit marked N/A will not be accepted.
- It is the responsibility of the Affiant to submit a new affidavit if any additional campaign contributions are made after the affidavit is executed but prior to the time the council acts on the matter.

Instruction sheet may be omitted when submitting the affidavit

Non-Public Works Bid

AFFIDAVIT

STATE OF LOUISIANA

PARISH/COUNTY OF JEFFERSON

BEFORE ME, the undersigned authority, personally came and appeared: Timothy Randall
_____, (Affiant) who after being by me duly sworn, deposed and said that

he/she is the fully authorized Sales of CIMSCO INC (Entity),

the party who submitted a bid in response to Bid Number 50-00134664 to the Parish of
Jefferson.

Affiant further said:

Campaign Contribution Disclosures

(Choose A or B, if option A is indicated please include the required
attachment):

Choice A _____

Attached hereto is a list of all campaign contributions, including the date and amount of each contribution, made to current or former elected officials of the Parish of Jefferson by Entity, Affiant, and/or officers, directors and owners, including employees, owning 25% or more of the Entity during the two-year period immediately preceding the date of this affidavit or the current term of the elected official, whichever is greater. Further, Entity, Affiant, and/or Entity Owners have not made any contributions to or in support of current or former members of the Jefferson Parish Council or the Jefferson Parish President through or in the name of another person or legal entity, either directly or indirectly.

Choice B X

there are NO campaign contributions made which would require disclosure under Choice A of this section.

Debt Disclosures

(Choose A or B, if option A is indicated please include the required attachment):

Choice A _____

Attached hereto is a list of all debts owed by the affiant to any elected or appointed official of the Parish of Jefferson, and any and all debts owed by any elected or appointed official of the Parish to the Affiant.

Choice B X _____

There are NO debts which would require disclosure under Choice A of this section.

Affiant further said:

That Affiant has employed no person, corporation, firm, association, or other organization, either directly or indirectly, to secure the public contract under which he received payment, other than persons regularly employed by the Affiant whose services in connection with the construction, alteration or demolition of the public building or project or in securing the public contract were in the regular course of their duties for Affiant; and

[The remainder of this page is intentionally left blank.]

That no part of the contract price received by Affiant was paid or will be paid to any person, corporation, firm, association, or other organization for soliciting the contract, other than the payment of their normal compensation to persons regularly employed by the Affiant whose services in connection with the construction, alteration or demolition of the public building or project were in the regular course of their duties for Affiant.

Timothy Raudat
Signature of Affiant

Timothy Raudat
Printed Name of Affiant

SWORN AND SUBSCRIBED TO BEFORE ME
ON THE 30th DAY OF JUNE, 2021.

Lisa Orlando
Notary Public

LISA ORLANDO
Printed Name of Notary

36612
Notary/Bar Roll Number

My commission expires upon death

