

DATE: 11/14/2017

INVITATION TO BID  
THIS IS NOT AN ORDER

Page: 4

BID NO.: 50-00121493

**JEFFERSON PARISH**

PURCHASING DEPARTMENT  
P.O. BOX 9  
GRETNA, LA. 70054-0009  
504-364-2678

VENDOR: BASIC SUPPLY, LLC

BUYER: SDUFFY

As per LSA-RS 47:301 et seq., all governmental bodies are excluded from payment of sales taxes to any Louisiana taxing body. Quotations shall be based on F.O.B. Agency warehouse or jobsite, anywhere within the Parish as designated by the Purchasing Department.

JEFFERSON PARISH reserves the right to cancel all or any part of an order if not shipped promptly. No charges will be allowed for parking or cartage unless specified in quotation. The order must not be filled at a higher price than quoted. JEFFERSON PARISH reserves the right to cancel at any time and for any reason by issuing a THIRTY (30) day written notice to the contractor.

JEFFERSON PARISH is expecting all products to be new and all work to be done in workman-like manner, according to standard practices. Any deviations or alteration from the specifications must be indicated on the bid form for each item and upon request, product data for same must be submitted by the time specified by the Purchasing Department.

**DELIVERY: FOB JEFFERSON PARISH**

INDICATE DELIVERY DATE ON EQUIPMENT AND SUPPLIES

2-3 WEEKS

INDICATE STARTING TIME (IN DAYS) FOR CONSTRUCTION WORK

INDICATE COMPLETION TIME (IN DAYS) FOR CONSTRUCTION WORK

In the event that addenda are issued with this bid, bidders MUST acknowledge all addenda on the bid form. Bidder must acknowledge receipt of an addendum on the bid form as indicated. Failure to acknowledge any addendum on the bid form will result in bid rejection.

Acknowledge Receipt of Addenda: NUMBER: \_\_\_\_\_

NUMBER: \_\_\_\_\_

NUMBER: \_\_\_\_\_

NUMBER: \_\_\_\_\_

LOUISIANA CONTRACTOR'S LICENSE NO.: (if applicable) \_\_\_\_\_

**\*\*\* ALL BIDDERS MUST COMPLETE SECTION BELOW \*\*\***

FIRM NAME: BASIC SUPPLY, LLC

SIGNATURE:

(Must be signed here)

TITLE:

MANAGER

PRINT OR TYPE NAME:

JOHN ATKINSON

ADDRESS:

PO BOX 63066

CITY, STATE:

LAFAYETTE, LA

ZIP:

70596

TELEPHONE:

( ) 337-769-0122

FAX:

( ) 337-247-7699

EMAIL ADDRESS:

charlotte@basicsupply.com

TOTAL PRICE OF ALL BID ITEMS: \$ 1201.02

## INVITATION TO BID FROM JEFFERSON PARISH - continued

BID NO.: 50-00121493

SEALED BID

ITEM NUMBER	QUANTITY	U/M	DESCRIPTION OF ARTICLES	UNIT PRICE QUOTED	TOTALS
			PURCHASE OF A 7.5 HORSEPOWER MOTOR AND ASSOCIATED ELECTRICAL EQUIPMENT		
1	10.00	EA	0010 - LUG, WIRE CONNECTOR, 1 HOLE, 1/0 - 3/8 IN., THOMAS AND BETTS  NO. 60130 SK NUMBER 00-0870750	no bid	no bid
2	10.00	EA	0020 - SWITCH, TOGGLE, 15 AMP, 1 POLE, IVORY, 120 VAC, PASS AND SEYMOUR  NO. 660-I SK NUMBER 00-0873510	0.60	6.00
3	3.00	EA	0030 - RECEPTACLE, SINGLE, 30 AMP, 250 VOLT, ARROW HEART NO. 5700N  SK NUMBER 00-0880770	8.34	25.02
4	3.00	EA	<b><u>COOPER 1234-BOX</u></b> 0040 - MOTOR, 7.5 HORSEPOWER, 1740 RPM, 230/460V, NEMA 213T, TEFC, 3 PHASE, ALL CAST IRON, HOSTILE DUTY, US MODEL NO.EL16, TECHTOP NO. GR3-CI-TF-213T-4-B-D-7.5 OR EQUAL SK NUMBER 00-0891200  <b><u>TECO NP7/54</u></b>	390.00	1170.00

**TYPE AEHH8P**Effective 05-01-13  
Supersedes 08-01-11**APPLICATIONS:**

- |                  |               |
|------------------|---------------|
| ■ Fans & Blowers | ■ Compressors |
| ■ Pumps          | ■ Mixers      |
| ■ Crushers       | ■ Conveyors   |

**FEATURES:**

- 1 - 200 hp
- 3600, 1800, 1200 RPM
- Totally Enclosed Fan Cooled (IP54 Rating)
- Meets or Exceeds NEMA Premium Efficiency Levels
- Department of Energy Efficiency Certificate #CC002A
- 36 Month Warranty from Date of Manufacture
- 60 Hz – 230/ 460V (Usable on 208V). 150 hp and Larger is 460V Only
- 1.15 Service Factor – Continuous
- 50 Hz Data on Nameplate - 190/ 380V at 1.0 S.F. 150 hp and Larger is 380V Only at 1.0 S.F.
- Class F Insulation with Phenolic Alkyd Resin Varnish – 2 Dips and Bakes
- Class B Temperature Rise
- Oversized Main Conduit Box Rotatable in 90 Degree Increments – Fully Gasketed F1 Mounted. F2 Available - See EXTRAS/OPTIONS Below
- Designed for 40°C Ambient Temperature - Note (1)
- Designed for 3300 ft. Elevation - Note (2)
- Factory Self Certified for Class 1, Div. 2, Groups B, C, D; Temp Code T3C, 400T and Below - Note (3)
- Bidirectional Rotation
- Cast Iron Frame, End Brackets, Pressed Steel Fan Cover and Conduit Box
- Dual Drilled Feet - Longer Frames (i.e. 145T Drilled also for 143T)
- 1045 Carbon Steel Shaft
- Aluminum Die Cast Squirrel Cage Rotor Construction
- Paint System: Phenolic Rust Proof Base Plus Polyurethane Top Coat
- Paint Color: Blue Gray – Munsell 7.5 BG 3.5/ .05
- Vacuum De-Gassed Re-Greaseable Bearings for Frames 280TS-449T/TS with Polyrex EM Grease
- Double Shielded Bearings on Frames 140T-280T Pre-Packed with MULTEMP SRL Grease
- Automatic Grease Discharge on Frames on Re-Greaseable Motors
- Labyrinth Type Metal Flinger on Both Ends for Frames 280TS-449T/TS
- Cast Iron Inner and Outer Bearing Caps for Frames 280TS-449T/TS
- Rubber Flinger on Drive-End for Frames 140T - 280T
- Grounding Terminal Inside Main Box
- Stainless Steel Nameplate
- Inverter Duty Magnet Wire Capable of Withstanding Voltage Spikes of Up to 2200 Volts
- **Precautions should be taken to eliminate or reduce shaft currents that may be imposed on the motor by the VFD as stated per NEMA MG1 Part 31.4.4.3.**
- Speed Ranges: 20:1 VT, 10:1 CT
- VFD Rated per NEMA MG1, Part 31.4.4.2.
- 9 Leads - 5 hp and Below, 12 Leads 7.5 hp - 125 hp, 6 Leads - 150 hp and Larger
- CE Mark on Nameplate, U.L. Recognized and CSA Approved

**EXTRAS/ OPTIONS:**

Please refer to the modifications document on our web site for a list of common modifications that can be performed.

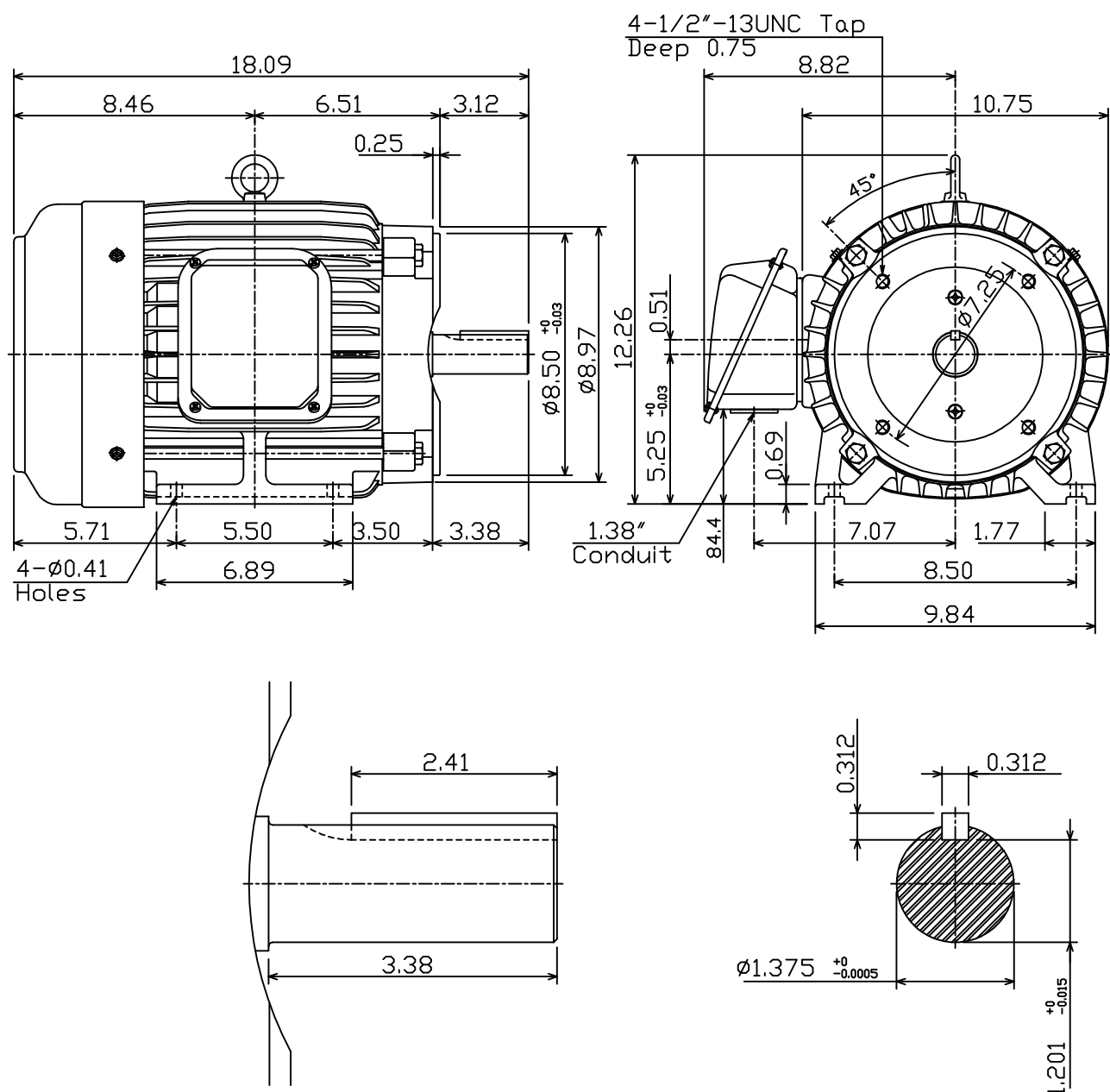
**Notes:**

- (1) Please consult factory for suitability in higher ambients.
- (2) Please consult factory for suitability in higher elevations.
- (3) Factory self-certified for 440T/TS frames requires fan change. Please see modifications section.  
There is an additional charge for Division II Nameplate - See modifications section.
- (4) Motor service factor is 1.0 when operated on a VFD.

DATE APRIL 25, 2011	OUTLINE DIMENSIONS 3-PHASE INDUCTION MOTOR	MOTOR TYPE: AEHH8P-CF
CAT. #: NP7/54C		FRAME NO. 213TC

Pole	HP	kW	Hz	VOLT	Syn.Speed r/min(rpm)
4	7.5	5.6	60	230/460	1800
Ins	Rating	Dimension in	Approx Weight	Bearings	
F	CONT.	inches	161 lbs.	DE: 6308ZZ	NDE: 6306ZZ

Totally Enclosed Fan-Cooled Type. Squirrel-Cage Rotor.



0				
DWN.	F.Z.HWANG	07-31-00	TEC   Westinghouse	DWG NO.
CHKD.	C.S.LO	02-11-03		31049D191590
APPD.	Y.B.HUANG	02-11-03		

# TECO Westinghouse

ISSUED <b>8/29/2014</b>	<b>PERFORMANCE DATA</b> <b>3-PHASE INDUCTION MOTOR</b>	ENCLOSURE <b>TEFC</b>
TYPE <b>AEHH8PCF</b>		CATALOG# <b>NP7/54C</b>

## NAMEPLATE INFORMATION

OUTPUT		POLE	FRAME SIZE	VOLTAGE	HZ	RATED AMBIENT	INS. CLASS	NEMA DESIGN	TIME RATING	SERVICE FACTOR
HP	KW									
<b>7.5</b>	<b>5.6</b>	<b>4</b>	<b>213TC</b>	<b>230/460</b>	<b>60</b>	<b>40°C</b>	<b>F</b>	<b>B</b>	<b>CONT.</b>	<b>1.15</b>

## VARIABLE FREQUENCY DRIVE SERVICE

VARIABLE TORQUE				OHMS/PHASE EQUIVALENT WYE CIRCUIT (AT RATED OPERATING TEMPERATURE 25°C)				
HZ	HP	RPM	TORQUE (lb-ft)	R1	R2	X1	X2	X <sub>m</sub>
<b>3~60</b>	<b>0.001~7.5</b>	<b>90~1800</b>	<b>0.058~22.44</b>	<b>0.7575</b>	<b>0.9336</b>	<b>2.5226</b>	<b>3.3729</b>	<b>97.772</b>

CONSTANT TORQUE				CONSTANT HORSEPOWER			
HZ	HP	RPM	TORQUE (lb-ft)	HZ	HP	RPM	TORQUE (lb-ft)
<b>6~60</b>	<b>.75~7.5</b>	<b>180~1800</b>	<b>22.44</b>	<b>60~120</b>	<b>7.5</b>	<b>1800~3600</b>	<b>22.44~11.22</b>

## TYPICAL PERFORMANCE

FULL LOAD RPM	EFFICIENCY				POWER FACTOR			SOUND PRESSURE LEVEL @ 3 FT Db(A)
	FULL LOAD		3/4 LOAD %	1/2 LOAD %	FULL LOAD %	3/4 LOAD %	1/2 LOAD %	
	MIN.%	NOM.%						
1755	90.2	91.7	91	89.5	86.5	82	72	60

CURRENTS									NEMA KVA CODE LETTER	SAFE STALL TIME IN SECONDS	
NO LOAD			FULL LOAD			LOCKED ROTOR				COLD	HOT
AT 208 VOLT	AT 230 VOLT	AT 460 VOLT	AT 208 VOLT	AT 230 VOLT	AT 460 VOLT	AT 208 VOLT	AT 230 VOLT	AT 460 VOLT			
5.15	5.54	2.77	19.57	17.70	8.85	115.8	128.0	64	H	29	20

TORQUE				INERTIA			ACCEL TIME (DOL)		ALLOWABLE STARTS PER HOUR	
FULL LOAD (lb-ft)	LOCKED ROTOR %FLT	PULL UP %FLT	BREAK DOWN %FLT	ROTOR WR <sup>2</sup> (lb-ft <sup>2</sup> )	NEMA LOAD WK <sup>2</sup> (lb-ft <sup>2</sup> )	MAX ALLOWABLE WK <sup>2</sup> (lb-ft <sup>2</sup> )	NEMA LOAD WK <sup>2</sup> Sec	MAX ALLOWABLE WK <sup>2</sup> Sec	COLD	HOT
<b>22.44</b>	<b>250</b>	<b>155</b>	<b>270</b>	<b>0.848</b>	<b>39</b>	<b>110</b>	<b>4.31</b>	<b>11.98</b>	<b>2</b>	<b>1</b>

APPROVED:	<b>M. PRATER</b>	DRAWING NO.	<b>31057NP7/54C</b>	REVISION:	<b>1</b>
-----------	------------------	-------------	---------------------	-----------	----------

# Power Receptacles 30A 250V NEMA 6-30 2-Pole/3-Wire - 1234, 5700N, 1232

[+ Share](#)



Commercial & Industrial Power Receptacles 30A, 250V NEMA 6-30 2-Pole/3-Wire. Heavy duty design and construction make Arrow Hart power devices ideal for any high amperage industrial or commercial power connectivity application.

[▶ Buyer's Guide Product Page](#)

## PRODUCT DETAILS

Catalog Number	Flush 1234 (Commercial, Brown) 5700N (Industrial, Black) Surface 1232 (Commercial, Black)
Configuration	2-Pole, 3-Wire Grounding
Rating	30A 250V NEMA 6-30R

## FEATURES

- Flush receptacles feature heavy gauge galvanized steel mounting strap and glass-reinforced nylon body.
- Patented lay-in terminals accept up to #4 AWG wire. (Surface)
- Back features concentric knockouts and an adjustable cord clamp to allow wiring from back or bottom. (Surface)