

NOTES:

1. ORIENT SOLAR PANEL TOWARDS SOUTHERN SKY FOR MAXIMUM SOLAR EXPOSURE
2. CONTROL CABINET HEIGHT MAY VARY.
3. SNAP LOCKS ARE PROVIDED, STANDARD 3/4" S/S BANDING IS RECOMMENDED
4. J-BOLTS NOT SHOWN
5. ALL DIMENSIONS ARE FOR REFERENCE ONLY
6. STATIC SIGNS NOT INCLUDED IN SYSTEM



S+ENGINEERING SPECIFICATIONS 600147

MATERIAL

INTERPRET GEOMETRIC
TOLERANCING PER:
ASME Y14.5-2009

REFERENCE:

FINISH

TOLERANCE UNLESS
OTHERWISE SPECIFIED

HOLE Ø	±.003
DEC.	INCH
X	±0.030
XX	±0.015
XXX	±0.005

ANGULAR $\pm 0.5^\circ$

TITLE:	RRFB, SOLAR 55/48, RADIO, SOP, DS, AMBER, PH, H POLE X2 (30" S1-1 ARRANGEMENT)
--------	---

DESIGNED BY:

TAPCO

SIZE

DWG.	NO.
------	-----

B

600147

REV

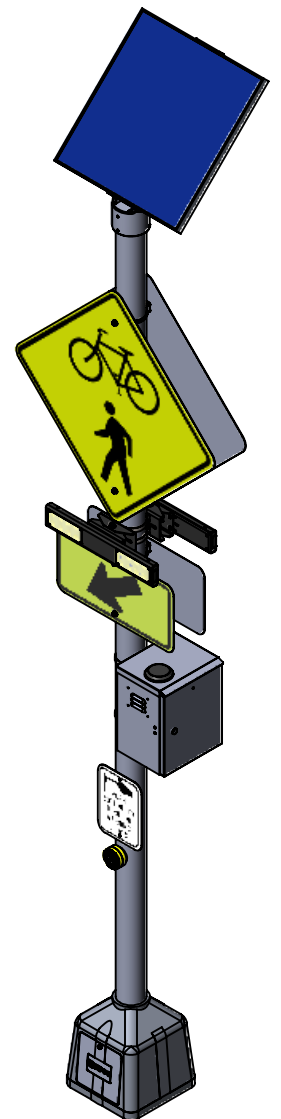
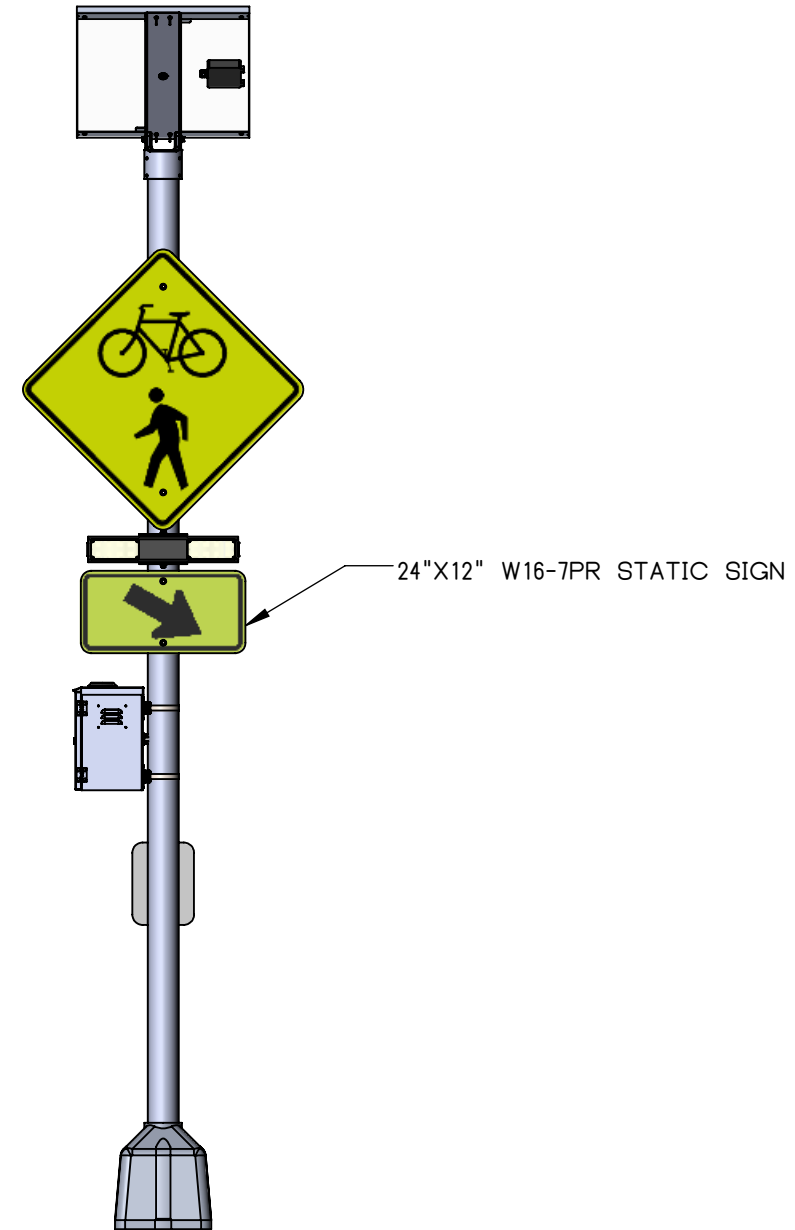
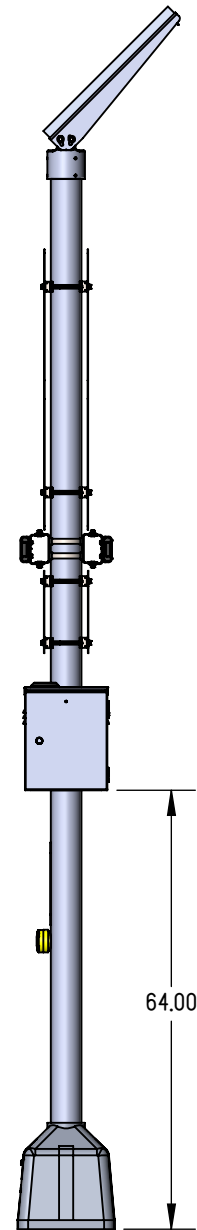
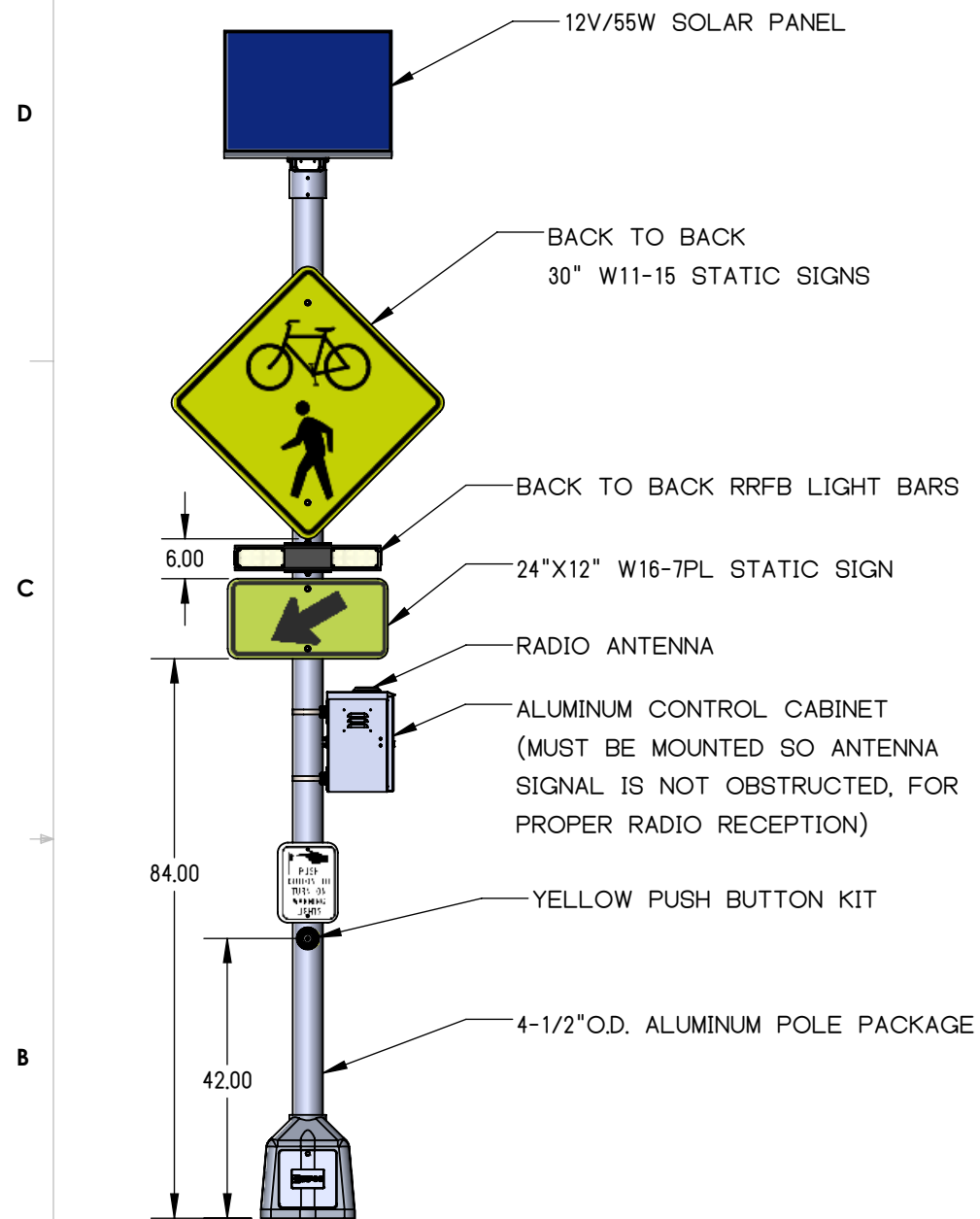
B

WEIGHT:

SCALE: 1:28

PROPRIETARY AND CONFIDENTIAL THE INFORMATION CONTAINED IN THIS DRAWING IS THE SOLE PROPERTY OF TAPCO. ANY REPRODUCTION IN PART OR AS A WHOLE WITHOUT THE WRITTEN PERMISSION OF TAPCO IS PROHIBITED.

SHEET 2 OF 6



NOTES:

1. ORIENT SOLAR PANEL TOWARDS SOUTHERN SKY FOR MAXIMUM SOLAR EXPOSURE
2. CONTROL CABINET HEIGHT MAY VARY.
3. SNAP LOCKS ARE PROVIDED, STANDARD 3/4" S/S BANDING IS RECOMMENDED
4. J-BOLTS NOT SHOWN
5. ALL DIMENSIONS ARE FOR REFERENCE ONLY
6. STATIC SIGNS NOT INCLUDED IN SYSTEM



S+ENGINEERING SPECIFICATIONS 600147

MATERIAL

INTERPRET GEOMETRIC
TOLERANCING PER:
ASME Y14.5-2009

REFERENCE:

TOLERANCE UNLESS
OTHERWISE SPECIFIED

HOLE Ø	±.003
DEC.	INCH
X	±0.030
XX	±0.015
XXX	±0.005

ANGULAR $\pm 0.5^\circ$

TITLE:	RRFB, SOLAR 55/48, RADIO, SOP, DS, AMBER, PH, H POLE X2 (30" W11-15 ARRANGEMENT)
--------	---

DESIGNED BY:

TAPCO

SIZE

DWG.	NO.
------	-----

B

600147

REV

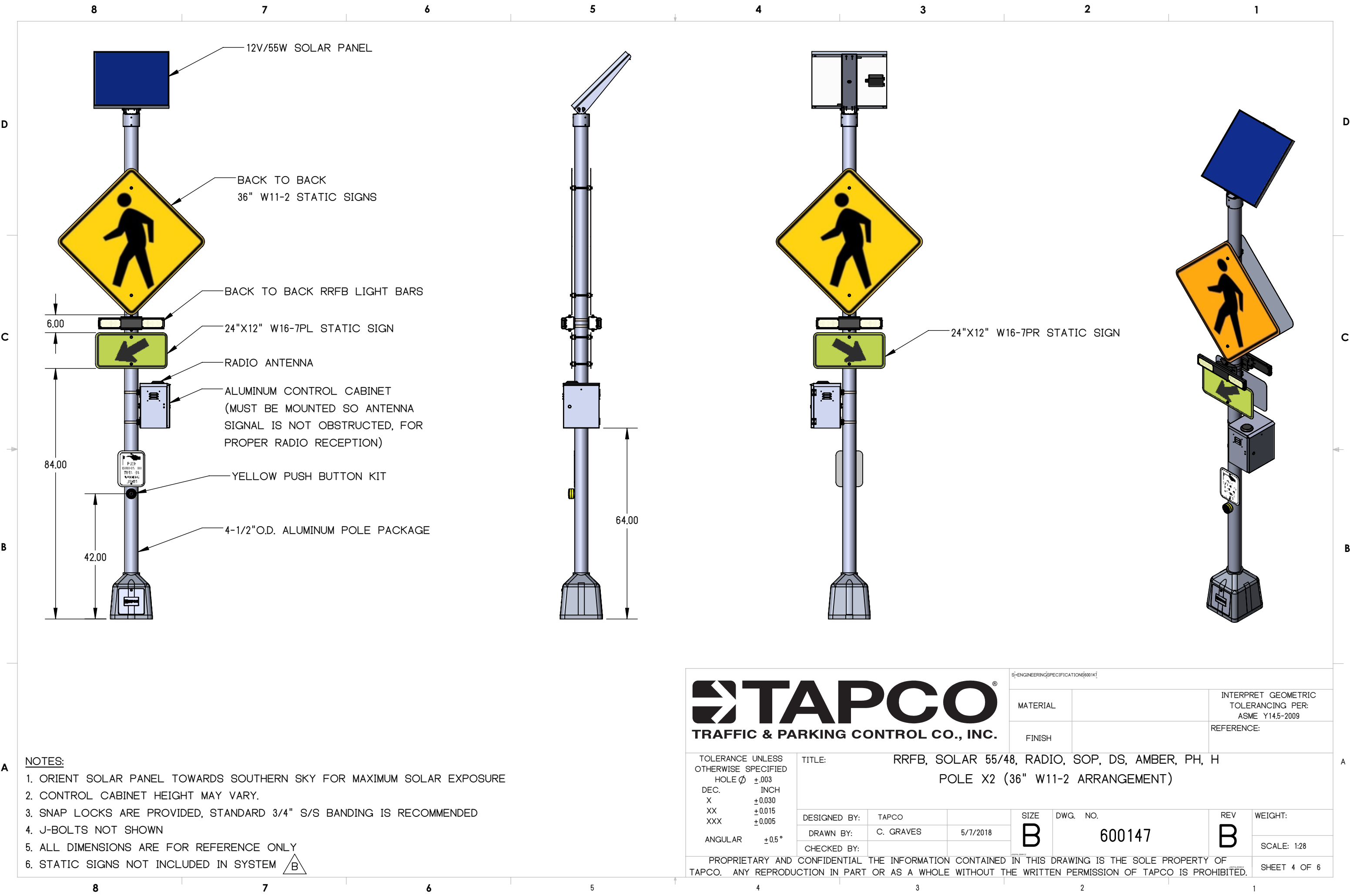
B

WEIGHT:

SCALE: 1:28

PROPRIETARY AND CONFIDENTIAL THE INFORMATION CONTAINED IN THIS DRAWING IS THE SOLE PROPERTY OF TAPCO. ANY REPRODUCTION IN PART OR AS A WHOLE WITHOUT THE WRITTEN PERMISSION OF TAPCO IS PROHIBITED.

SHEET 3 OF 6



- NOTES:**
1. ORIENT SOLAR PANEL TOWARDS SOUTHERN SKY FOR MAXIMUM SOLAR EXPOSURE
 2. CONTROL CABINET HEIGHT MAY VARY.
 3. SNAP LOCKS ARE PROVIDED, STANDARD 3/4" S/S BANDING IS RECOMMENDED
 4. J-BOLTS NOT SHOWN
 5. ALL DIMENSIONS ARE FOR REFERENCE ONLY
 6. STATIC SIGNS NOT INCLUDED IN SYSTEM

TAPCO
TRAFFIC & PARKING CONTROL CO., INC.

TOLERANCE UNLESS OTHERWISE SPECIFIED HOLE Ø ±.003 DEC. INCH X ±0.030 XX ±0.015 XXX ±0.005 ANGULAR ±0.5°	TITLE: RRFB, SOLAR 55/48, RADIO, SOP, DS, AMBER, PH, H POLE X2 (36" W11-2 ARRANGEMENT)										
	DESIGNED BY:		TAPCO				SIZE	DWG. NO.		REV	WEIGHT:
	DRAWN BY:		C. GRAVES		5/7/2018		B	600147		B	
	CHECKED BY:										SCALE: 1:28
PROPRIETARY AND CONFIDENTIAL THE INFORMATION CONTAINED IN THIS DRAWING IS THE SOLE PROPERTY OF TAPCO. ANY REPRODUCTION IN PART OR AS A WHOLE WITHOUT THE WRITTEN PERMISSION OF TAPCO IS PROHIBITED.											
SHEET 4 OF 6											

