

BID NO.: 50-00132425

**BID FORM**  
Non-Public Works**All Public Work Projects are required to use the Louisiana Uniform Public Work Bid Form**

All prices must be held firm unless an escalation provision is requested in this bid. Jefferson Parish will allow one escalation during the term of the contract, which may not exceed the U.S. Bureau of Labor Statistics National Index for all Urban Consumers, unadjusted 12-month figure. The most recently published figure issued at the time an adjustment is requested will be used. A request must be made in writing by the vendor, and the escalation will only be applied to purchases made after the request is made.

Are you requesting an escalation provision?

YES \_\_\_\_\_ NO ☒MAXIMUM ESCALATION PERCENTAGE REQUESTED N/A %INITIAL BID PRICES WILL REMAIN FIRM THROUGH THE DATE OF 01/26/2021.

For the purposes of comparison of bids when an escalation provision is requested, Jefferson Parish will apply the maximum escalation percentage quoted by the bidder to the period to which it is applied in the bid. The initial price and the escalation will be used to calculate the total bid price. It will be assumed, for comparison of prices only, that an equal amount of material or labor is purchased each month throughout the entire contract.

**DELIVERY: FOB JEFFERSON PARISH**

INDICATE DELIVERY DATE ON EQUIPMENT AND SUPPLIES

4-6 weeks from order execution

LOUISIANA CONTRACTOR'S LICENSE NO.: (if applicable)

31952**THIS SECTION MUST BE COMPLETED BY BIDDER:**FIRM NAME: Daktronics, Inc.ADDRESS: 201 Daktronics Dr.CITY, STATE: Brookings, SD ZIP: 57006TELEPHONE: ( 605 ) 692 - 0200 FAX: ( 605 ) 697 - 4746EMAIL ADDRESS: sales@daktronics.com, brandon.liotta@daktronics.com

In the event that addenda are issued with this bid, bidders **MUST** acknowledge all addenda on the bid form. Bidder must acknowledge receipt of an addendum on the bid form by placing the addendum number as indicated. Failure to acknowledge any addendum on the bid form will result in bid rejection.

Acknowledge Receipt of Addenda: NUMBER: NA

NUMBER: \_\_\_\_\_

NUMBER: \_\_\_\_\_

NUMBER: \_\_\_\_\_

TOTAL PRICE OF ALL BID ITEMS: \$ 41,682.60

AUTHORIZED

SIGNATURE: Inordsi

Digitally signed by Inordsi  
DN: dc=lan, dc=daktronics, ou=Dak, ou=Corp, ou=Sales,  
cn=Inordsi, email=Lindsey.Nordsiden@daktronics.com  
Date: 2020.11.03 11:34:30 -06'00'

Lindsey L. Nordsiden

Printed Name

TITLE: Regional Sales Coordinator

SIGNING INDICATES YOU HAVE READ AND COMPLY WITH THE INSTRUCTIONS AND CONDITIONS.

**NOTE: All bids should be returned with the BID NUMBER and BID OPENING DATE indicated on the outside of the electronic envelope submitted to the Purchasing Department.**

## INVITATION TO BID FROM JEFFERSON PARISH - continued

BID NO.: 50-00132425

SEALED BID

ITEM NUMBER	QUANTITY	U/M	DESCRIPTION OF ARTICLES	UNIT PRICE QUOTED	TOTALS
1	4.00	EA	<p>ONE TIME PURCHASE OF SCOREBOARDS FOR THE JEFFERSON PARISH RECREATION DEPARTMENT</p> <p>0001-Fair Play Model BA-7200PC-2 LED OR EQUAL , Baseball Scoreboards Includes: MP-80 Controller, Color: Forest Green. ProGuard UV-Resistant Upgrades (10 year warranty), Protective Carrying Cases - for controllers includes: Transmitter and Receiver. Personalization Signs (30 inch height x 14 feet width) includes: City logo and name. Outdoor Scoreboard shall include: Immediate "Loaners" of all electronic components if repairs are needed. Standard Equipment shall include: Super-bright , wide- angle amber LED'S Sport specific control console inserts. 4-Level control console display brightness adjustment , 5-year warranty, ETL/CETL listed to UL standard. Quality engineered water resistant aluminum construction , 9- Segment digits. 10-Year Warranty on ALL electronic components . Dimensions for Digit Size(H") Inning 18 inches , Out 18 inches , Strike 18 inches , Team scores 18 inches Pitch Count 15 inches.</p>	\$10,420.65	\$41,682.60

**Non-Public Works Bid**

**AFFIDAVIT**

**STATE OF** South Dakota

**PARISH/COUNTY OF** Brookings

BEFORE ME, the undersigned authority, personally came and appeared: \_\_\_\_\_  
Lindsey L. Nordsiden, (Affiant) who after being by me duly sworn, deposed and said that  
he/she is the fully authorized Regional Sales Coordinator of Daktronics, Inc. (Entity),  
the party who submitted a bid in response to Bid Number 50-00132425, to the Parish of  
Jefferson.

Affiant further said:

Campaign Contribution Disclosures

**(Choose A or B, if option A is indicated please include the required attachment):**

**Choice A** \_\_\_\_\_ Attached hereto is a list of all campaign contributions, including the date and amount of each contribution, made to current or former elected officials of the Parish of Jefferson by Entity, Affiant, and/or officers, directors and owners, including employees, owning 25% or more of the Entity during the two-year period immediately preceding the date of this affidavit or the current term of the elected official, whichever is greater. Further, Entity, Affiant, and/or Entity Owners have not made any contributions to or in support of current or former members of the Jefferson Parish Council or the Jefferson Parish President through or in the name of another person or legal entity, either directly or indirectly.

**Choice B** ☒ there are **NO** campaign contributions made which would require disclosure under Choice A of this section.

Debt Disclosures

**(Choose A or B, if option A is indicated please include the required attachment):**

**Choice A** \_\_\_\_\_ Attached hereto is a list of all debts owed by the affiant to any elected or appointed official of the Parish of Jefferson, and any and all debts owed by any elected or appointed official of the Parish to the Affiant.

**Choice B** ☒ There are **NO** debts which would require disclosure under Choice A of this section.

Affiant further said:

That Affiant has employed no person, corporation, firm, association, or other organization, either directly or indirectly, to secure the public contract under which he received payment, other than persons regularly employed by the Affiant whose services in connection with the construction, alteration or demolition of the public building or project or in securing the public contract were in the regular course of their duties for Affiant; and

*[The remainder of this page is intentionally left blank.]*

That no part of the contract price received by Affiant was paid or will be paid to any person, corporation, firm, association, or other organization for soliciting the contract, other than the payment of their normal compensation to persons regularly employed by the Affiant whose services in connection with the construction, alteration or demolition of the public building or project were in the regular course of their duties for Affiant.

**Inordsi**

Signature of Affiant

Digitally signed by Inordsi  
DN: cn=Inordsi, o=Inordsi, ou=Inordsi, email=Lindsey.Nordsiden@aktronics.com  
Date: 2020.11.03 11:35:26 -0600

Lindsey L. Nordsiden

Printed Name of Affiant

SWORN AND SUBSCRIBED TO BEFORE ME

ON THE 3 DAY OF NOV, 2020

Audrey Kress

Notary Public

Audrey Kress

Printed Name of Notary



Notary/Bar Roll Number

My commission expires

12-7-2022

## SECRETARY'S CERTIFICATE

I, Carla S. Gatzke do hereby certify that: I am the Secretary of Daktronics, Inc. (hereinafter the "Corporation;") and that as such I am authorized to execute this certificate on behalf of the Corporation in my capacity as the Secretary of the Corporation and, do hereby certify that the following are true and correct copies of excerpts of resolutions duly adopted by the Board of Directors of the Corporation; and that which have not been rescinded or modified:

### RESOLUTIONS

**RESOLVED**, that Reece Kurtenbach ("CEO") and Sheila M. Anderson ("CFO"), are authorized to execute on behalf of the company, with their two signatures in combination, any type and value of contract; and

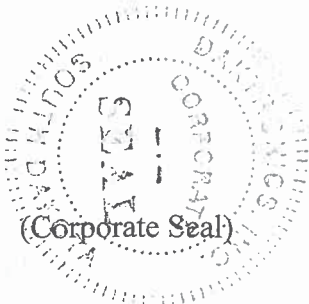
**BE IT FURTHER RESOLVED**, that each Business Unit Vice President and Vice President of Project Management, for contracts within his or her Business Unit, and each of the CEO and CFO, is authorized to execute on behalf of the company, with his or her sole signature, all customer sales contracts involving an aggregate amount of \$5 million or less; and

**BE IT FURTHER RESOLVED**, that each Business Unit Vice President and Vice President of Project Management, for contracts within his or her Business Unit, in combination with either the CEO or the CFO, is authorized to execute on behalf of the company, with dual signatures, all customer sales contracts involving an aggregate amount in excess of \$5 million; and

**BE IT FURTHER RESOLVED**, that each Market Manager, for contracts within his or her Market, is authorized to execute on behalf of the company, with his or her sole signature, all customer sales contracts involving an aggregate amount of \$3.0 million or less; and

**BE IT FURTHER RESOLVED**, that the CEO may authorize other employees of the company or its subsidiaries to execute on behalf of the company or its subsidiaries, with their sole or joint signature, all customer sales contracts involving an aggregate amount of \$1,000,000 or less, or purchases under master agreements with customers involving any amount; and

**IN WITNESS WHEREOF** I have hereunto set my hand and affixed the seal of the Corporation this 1st day of September, 2013.



  
\_\_\_\_\_  
Carla S. Gatzke, Secretary

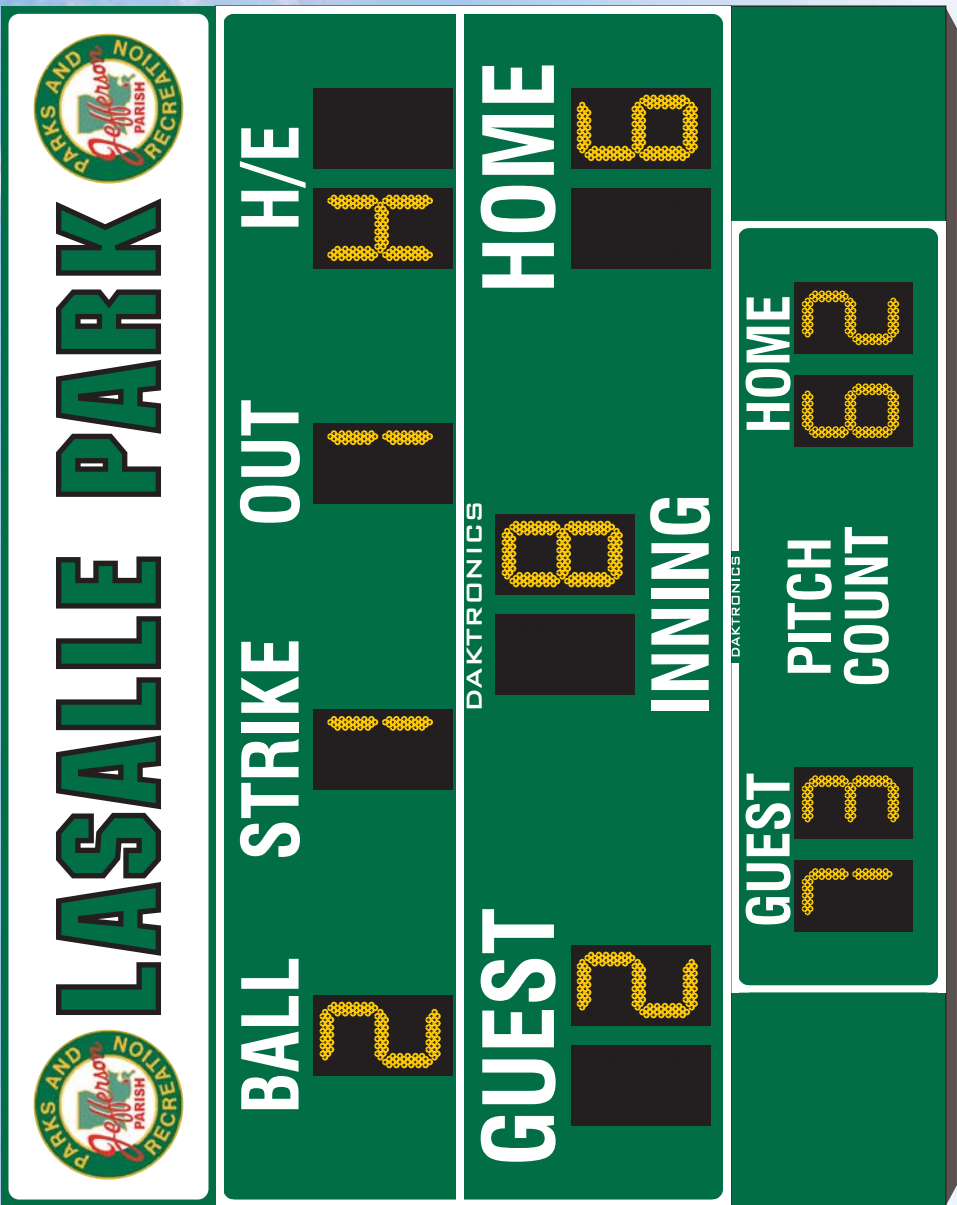
Jefferson Parish Purchasing Dept

Bid #50-00132425

LaSalle Park Baseball

Bid Clarifications

- Daktronics reserves the right to negotiate any resulting contract upon award. Further, if awarded, Daktronics requests that the following provision be included in the contract documents: Without limiting any other provision in this Agreement, the parties agree that any delays caused directly or indirectly as a result of the COVID-19 pandemic are excusable and will extend the time for performance under this Agreement. Delays may be caused by, without limitation, government mandates, unsafe site conditions, or resource constraints arising out of conformity with CDC guidelines or government mandates.
- Per attached product specifications display digits are 8-segment digits.
- Per attached product specifications, the BA-2017 and the ADPC (pitch count display) are 2. separate displays that will install together and function as one complete display.
- Please see attached Gold Warranty Scope of Services document for warranty specifications.
- Bid price includes freight.
- Please see attached Secretary's Certificate in lieu of Corporate Resolution page in bid documents.



- Overall Dimensions  
11' high x 14' wide
- ID Panel (Non-Backlit)  
2.5' high x 14' wide  
(above Scoreboard)
- Baseball Scoreboard  
BA-2017-A-PV  
6' high x 14' wide
- AD Panel w/ Drop-In  
Pitch Count Display  
ADPC-2023-A-PV  
2.5' high x 14' wide  
(below Scoreboard)

Do Not Use for Design, Engineering, or Ad Copy Approval Purposes  
Screens and/or Printer Calibration may Impair Visual Accuracy of Colors Shown  
ALL DIMENSIONS ARE APPROXIMATE

10/27/2020 (REV 0) Concept Jefferson Parish LaSalle Playground LA Baseball BA-2017 (1)

**JEFFERSON PARISH LASALLE PLAYGROUND** GRETN, LA

THIS ARTWORK IS PROTECTED UNDER FEDERAL AND INTERNATIONAL COPYRIGHT LAW. EXPRESSED PERMISSION FROM DAKTRONICS, INC. IS REQUIRED FOR REPRODUCTION. RENDERINGS ARE FOR THE EXCLUSIVE USE OF DAKTRONICS CUSTOMERS, AND A CUSTOMER'S PARTNERS. RENDERINGS ARE CONCEPTUAL IN NATURE, AND ALTERATIONS MAY OCCUR DURING THE DESIGN AND INSTALLATION PROCESS. THEREFORE, THESE RENDERINGS DO NOT REPRESENT FABRICATION OR STRUCTURAL ENGINEER CERTIFIED OR STAMPED DOCUMENTS. SCREENS AND/OR PRINTER CALIBRATION MAY IMPAIR VISUAL ACCURACY OF SPECIFIED COLORS SHOWN.

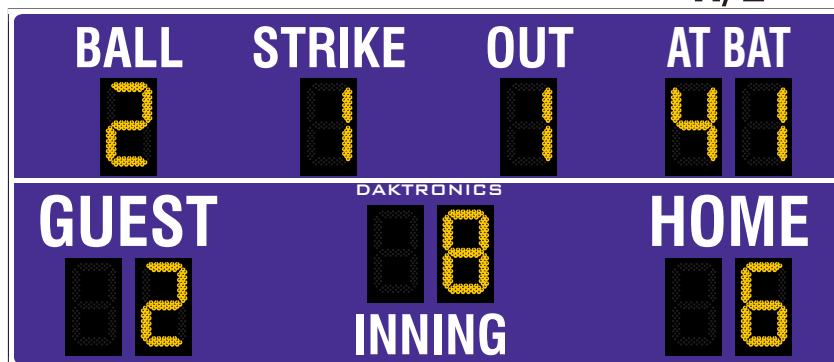




# DAKTRONICS BA-2017 PRODUCT SPECIFICATIONS

Choose one of four vinyl captions  
(Optional changeable caption  
panels also offered)

PITCH COUNT  
TIME  
H/E



This outdoor LED baseball/softball scoreboard displays HOME and GUEST scores to 99, INNING to 19, BALL to three, STRIKE to two, OUT to two and AT BAT to 99. Different information can be displayed depending on the selected control console (see chart on page 2). Scoreboard shown with amber PanaView® digits and optional border striping (center stripe comes standard).

DIMENSIONS	UNCRATED WEIGHT	POWER (120 VAC)*	
6'-0" H x 14'-0" W x 8" D (1.83 m, 4.27 m, 203 mm)	216 lb (98 kg)	Red/Amber Digits	140 Watts, 1.2 Amps
		White Digits	290 Watts, 2.5 Amps

\*Scoreboard requires a dedicated circuit. Models with 240 VAC power at half the indicated amperage are also offered (International Use Only).

## DIGITS

- All digits are 18" (457 mm) high.
- Select red, amber, or white LED digits.
- Scoreboard features robust weather-sealed digits (see [DD2495646](#)).
- Digits may be dimmed for night viewing.

## CAPTIONS

- HOME and GUEST captions are 10" (254 mm) high. All other captions are 8" (203 mm) high.
- Standard captions are vinyl, applied to the display face.

## DISPLAY COLOR

Choose from 150+ colors (from Martin Senour® paint book) at no additional cost.

## CONSTRUCTION

Alcoa aluminum alloy 5052 for excellent corrosion resistance

## PRODUCT SAFETY APPROVAL

ETL-listed to UL 48, tested to CSA standards, and CE-labeled

## OPERATING TEMPERATURES

- Display: -22° to 122° Fahrenheit (-30° to 50° Celsius)
- Console: 32° to 130° Fahrenheit (0° to 54° Celsius)

[WWW.DAKTRONICS.COM](http://WWW.DAKTRONICS.COM) E-MAIL: [SALES@DAKTRONICS.COM](mailto:SALES@DAKTRONICS.COM)

201 Daktronics Drive, PO Box 5128, Brookings, SD 57006  
Phone: 1-800-325-8766 or 605-692-0200 Fax: 605-697-4746  
DD2118169 102120 Page 1 of 7



# DAKTRONICS BA-2017 PRODUCT SPECIFICATIONS

CONTROL CONSOLES	CONTROL OPTIONS
<b>All Sport® 1600*</b> (see <a href="#">SL-04352</a> )  <i>*May be upgraded to</i> <b>All Sport 5000</b> (see <a href="#">SL-03991</a> )	<b>Wired (standard):</b> One-pair shielded cable of 22 AWG minimum is required. A cover plate with mounted connector and standard 2" x 4" x 2" (51 mm x 102 mm x 51 mm) outlet box is provided. Connector mates with signal cable from control console. <hr/> <b>Wireless (optional):</b> 2.4 GHz spread spectrum radio features 64 non-interfering channels and 8 broadcast groups (see <a href="#">SL-04370</a> ).
<b>RC-200</b> (see <a href="#">DD3715714</a> )	<b>Optional</b> wireless handheld controller features 2.4 GHz spread spectrum radio with 64 non-interfering channels and 8-10 hours of operation via internal rechargeable battery.
<b>DAK Score &amp; MX-1</b> (see <a href="#">DD3888368</a> )	CUSTOMER-SUPPLIED mobile device or tablet with DAK Score app installed communicates via <b>Bluetooth®</b> wireless technology to an MX-1 Interface Box that controls the scoreboard through 2.4 GHz radio or wired connection.

## TIME CLOCK

The two-digit clock can display hours/minutes/seconds. Clock information shifts from hours to minutes to seconds as time counts down.

## MOUNTING

Scoreboard is typically mounted on two vertical beams or poles. Hardware to mount scoreboard on two beams is included; hardware for more beams is at additional cost. Standard mounting uses I-beam clamps. Optional mounting method using angle brackets is also offered; maximum beam width is 12" (305 mm) and maximum beam depth is 22" (559 mm). Refer to attached drawings for more information on mounting methods.

## SERVICE ACCESS

Digit panels and electronics are serviced from the front of the scoreboard.

## GENERAL INFORMATION

Scoreboard provides scoring capabilities for two teams. 100% solid state electronics are housed in an all aluminum cabinet. Scoreboard is shipped in one section. Scoreboard power is to be provided on a dedicated circuit to prevent loss of game information due to failure of another component on the circuit. Specifications and pricing are subject to change without notice.

## OPTIONS & ACCESSORIES

- Scoreboard border striping (center stripe comes standard)
- Multiple caption and striping colors (see [DD2101644](#))
- Team name caption in place of HOME
- H/E (hit/error), TIME or PITCH COUNT captions on changeable panels
- Team names on changeable panels
- Individual digit protective screens (see [SL-04939](#))
- Protective netting (see [DD2690927](#))
- Optional angle bracket mounting method
- Advertising/identification panels
- Decorative accents
- Electronic message centers and video displays in multiple sizes

## ADVERTISING/IDENTIFICATION PANELS

### Backlit & Non-Backlit:

- 1'-6" H x 14'-0" W (457 mm, 4.27 m)
- 2'-0" H x 14'-0" W (610 mm, 4.27 m)
- 2'-6" H x 14'-0" W (762 mm, 4.27 m)
- 3'-0" H x 14'-0" W (914 mm, 4.27 m)

For additional non-backlit panel sizes, see [SL-03761](#).

## FOR ADDITIONAL INFORMATION

- Installation Specifications: DWG-1157187 (attached)
- Standard I-beam Mounting: DWG-1052565 (attached)
- LVX I-Beam Mounting: DWG-3918361 (attached)
- Optional Pole Mounting: DWG-1048184 (attached)
- Component Locations: DWG-1066282 (attached)
- Architectural Specifications: See [SL-07637](#)

INFORMATION DISPLAYED	CONTROLLER		
	AS 1600	AS 5000/DAK SCORE	RC-200
AT BAT	✓	✓	✓
H/E	✓		✓
TIME	✓	✓	✓
PITCH COUNT	✓ <sup>1</sup>	✓ <sup>2</sup>	

1) Pitch count controlled via handheld pendant

2) Pitch count controlled via console keypad with All Sport 5000

The Bluetooth® word mark and logos are registered trademarks owned by the Bluetooth SIG, Inc. and any use of such marks by Daktronics, Inc. is under license.

WWW.DAKTRONICS.COM E-MAIL: SALES@DAKTRONICS.COM

All Sport® and PanaView® are trademarks of Daktronics, Inc.  
 Martin Senour® is a registered trademark of its owner.  
 DD2118169 102120 Page 2 of 7 Copyright © 2011-2020 Daktronics, Inc.



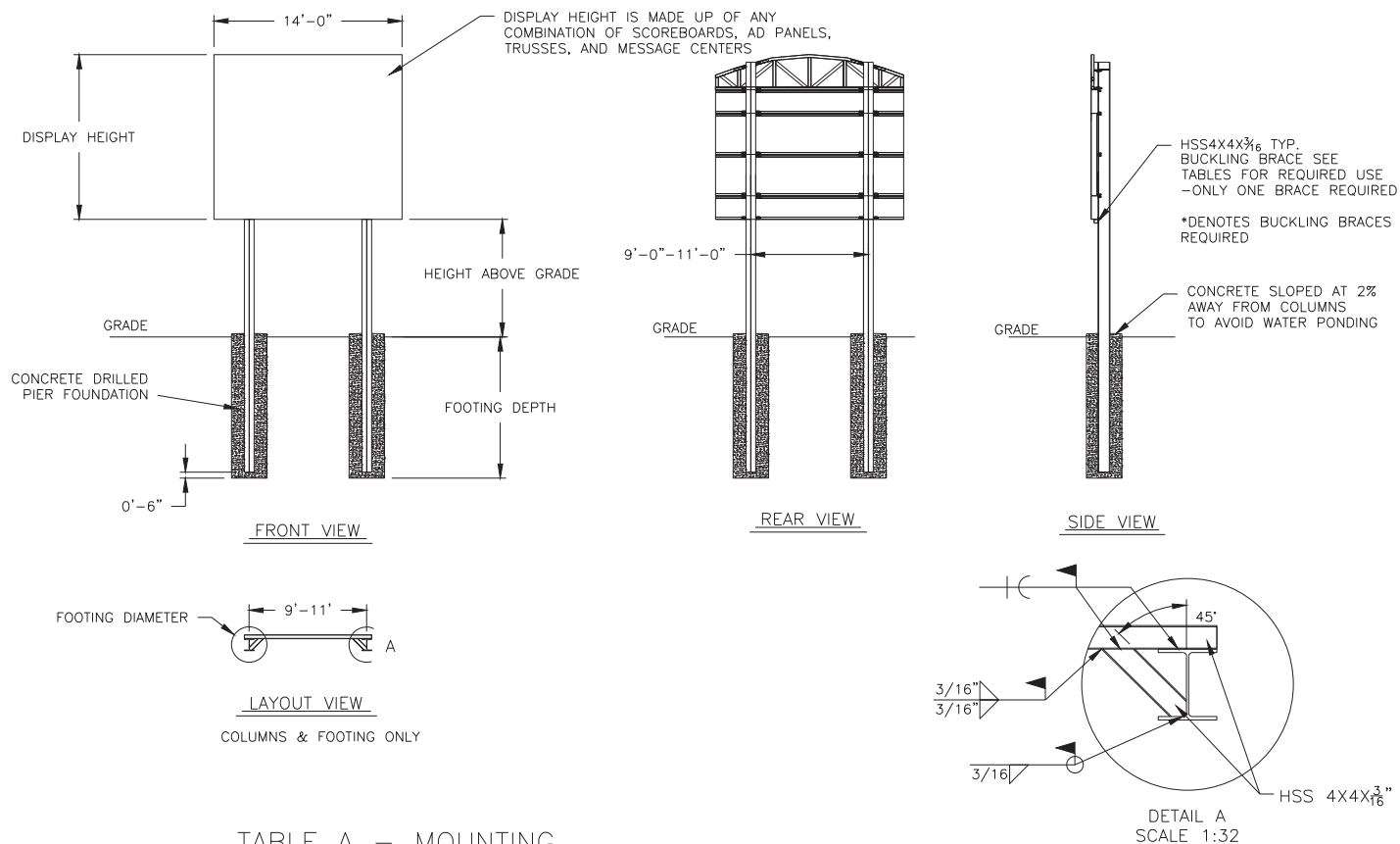


TABLE A - MOUNTING

EXPOSURE B

HEIGHT ABOVE GRADE = 10'					HEIGHT ABOVE GRADE = 15'						
DISPLAY HEIGHT (FT)		DESIGN WIND VELOCITY				DISPLAY HEIGHT (FT)		DESIGN WIND VELOCITY			
		115 MPH	130 MPH	150 MPH	170 MPH			115 MPH	130 MPH	150 MPH	170 MPH
6	COLUMN FOOTING	W6X15 2.0'X6.5'	W8X21 2.0'X7.0'	W8X21 2.0'X8.0'	W10X22 2.0'X8.5'	6	COLUMN FOOTING	W8X24 2.0'X7.5'	W8X24 2.0'X8.0'	W8X28 2.0'X9.0'	W8X31 2.0'X9.5'
8	COLUMN FOOTING	W10X22 2.0'X7.5'	W8X24 2.0'X8.0'	W8X24 2.0'X9.0'	W8X28 2.0'X10.0'	8	COLUMN FOOTING	W8X31 2.0'X8.5'	W8X31 2.0'X9.0'	W10X33 3.0'X8.5'	W10X39 3.0'X9.5'
10	COLUMN FOOTING	W8X24 2.0'X8.5'	W8X28 2.0'X9.0'	W8X31 2.0'X10.0'	W10X33 3.0'X9.5'	10	COLUMN FOOTING	W8X24* 2.0'X9.0'	W12X26* 2.0'X10.0'	W10X33* 3.0'X9.5'	W16X36* 3.0'X11.0'
12	COLUMN FOOTING	W8X28 2.0'X9.0'	W8X31 2.0'X10.0'	W10X39 3.0'X9.5'	W12X40 3.0'X11.0'	12	COLUMN FOOTING	W12X26* 2.0'X10.0'	W14X30* 3.0'X9.5'	W16X36* 3.0'X11.0'	W14X43* 3.0'X12.0'
14	COLUMN FOOTING	W10X26* 2.0'X10.0'	W10X26* 3.0'X9.0'	W12X30* 3.0'X10.0'	W14X34* 3.0'X11.0'	14	COLUMN FOOTING	W10X30* 3.0'X9.5'	W10X49* 3.0'X10.0'	W16X40* 3.0'X11.0'	W14X48* 3.0'X13.0'

FOOTING DIMENSIONS = DIAMETER X DEPTH  
\* DENOTES BUCKLING BRACE REQUIRED

EXPOSURE C

HEIGHT ABOVE GRADE = 10'				HEIGHT ABOVE GRADE = 15'			
DISPLAY HEIGHT (FT)		DESIGN WIND VELOCITY		DISPLAY HEIGHT (FT)		DESIGN WIND VELOCITY	
		115 MPH	140 MPH			115 MPH	140 MPH
6	COLUMN FOOTING	W8X21 2.0'X7.5'	W8X24 2.0'X8.5'	6	COLUMN FOOTING	W12X26 2.0'X8.5'	W8X31 2.0'X9.5'
8	COLUMN FOOTING	W8X24 2.0'X8.5'	W8X28 2.0'X10.0'	8	COLUMN FOOTING	W8X31 2.0'X9.5'	W10X39 3.0'X9.5'
10	COLUMN FOOTING	W8X31 2.0'X9.5'	W10X33 3.0'X9.5'	10	COLUMN FOOTING	W12X30* 3.0'X9.0'	W16X36* 3.0'X11.0'
12	COLUMN FOOTING	W10X33 3.0'X9.0'	W12X40 3.0'X10.5'	12	COLUMN FOOTING	W14X34* 3.0'X9.5'	W16X40* 3.0'X11.0'
14	COLUMN FOOTING	W12X26* 3.0'X9.5'	W14X34* 3.0'X11.0'	14	COLUMN FOOTING	W14X38* 3.0'X11.0'	W14X48* 3.0'X13.0'

FOOTING DIMENSIONS = DIAMETER X DEPTH  
\* DENOTES BUCKLING BRACE REQUIRED

NOTE:  
-REFER TO NOTE 7 FOR EXPOSURE CATEGORY DEFINITIONS.

NOTES:

- FOOTING AND COLUMN SIZES ARE SUGGESTIONS ONLY, PROVIDED TO ASSIST WITH ESTIMATING INSTALLATION COSTS AND ARE NOT INTENDED FOR CONSTRUCTION PURPOSES. THE DESIGN MUST BE CERTIFIED BY A PROFESSIONAL ENGINEER LICENSED IN THE STATE OF THE INSTALLATION BEFORE THEY CAN BE USED FOR FABRICATION OR ERECTION.
- INTERNATIONAL BUILDING CODE 2012 USED IN DESIGN OF COLUMNS AND FOOTINGS WITH IMPORTANCE FACTOR=1,  $K_z t=1.0$ ,  $K_d=0.85$ ,  $G=0.85$ . SEISMIC DESIGN WAS NOT CONSIDERED.
- FOOTING DIMENSIONS ARE BASED ON ASSUMED SOIL CLASS 4 (ALLOWABLE LATERAL BEARING PRESSURE OF 150 psf).
- STRUCTURAL STEEL IS GRADE A992 (50 ksi) STEEL. CONCRETE SHALL HAVE A MINIMUM 28 DAY COMPRESSIVE STRENGTH OF 2500 psi.
- THE AVERAGE DISPLAY WEIGHT FOR A LAYOUT CAN NOT EXCEED 8 PSF.
- DAKTRONICS INC. IS NOT RESPONSIBLE FOR STRUCTURES DESIGNED AND INSTALLED BY OTHERS.
- LOCAL BUILDING OFFICIALS SHOULD BE CONTACTED TO DETERMINE THE WIND SPEED AND EXPOSURE CATEGORY FOR THE PROPOSED SIGN LOCATION. THE EXPOSURE CATEGORY C IS DEFINED AS:  
  
EXPOSURE B - URBAN AND SUBURBAN AREAS, OR OTHER TERRAIN WITH NUMEROUS SPACED OBSTRUCTIONS HAVING THE SIZE OF SINGLE-FAMILY DWELLINGS OR LARGER. THESE CONDITIONS MUST PREVAIL FOR A DISTANCE FROM THE SIGN OF AT LEAST 2,600 ft OR 20 TIMES THE SIGN HEIGHT, WHICHEVER IS GREATER  
  
EXPOSURE C - OPEN TERRAIN WITH SCATTERED OBSTRUCTIONS HAVING HEIGHTS GENERALLY LESS THAN 30 FT. THIS CATEGORY INCLUDES FLAT OPEN COUNTRY, GRASSLANDS, AND ALL WATER SURFACES IN HURRICANE PRONE REGIONS.
- FOR SPECIFIC PRODUCT DETAILS ON WEIGHT, MOUNTING, ETC. REFER TO THE INDIVIDUAL PRODUCT SPECIFICATION SHEETS.

<p>DAKTRONICS, INC. BROOKINGS, SD 57006</p>		<p>THE CONCEPTS EXPRESSED AND DETAILS SHOWN ON THIS DRAWING ARE CONFIDENTIAL AND PROPRIETARY. DO NOT REPRODUCE BY ANY MEANS WITHOUT THE EXPRESSED WRITTEN CONSENT OF DAKTRONICS, INC. COPYRIGHT 2013 DAKTRONICS, INC.</p>	
		DO NOT SCALE DRAWING	
PROJ: OUTDOOR SCOREBOARD INSTALLATION			
TITLE: 14' WIDTH SCOREBOARD INSTALLATION SPECS			
DESIGN: RSCHWAR		DRAWN: RSCHWAR	
SCALE: 1/16"=1'		DATE: 27 NOV 13	
SHEET	REV	JOB NO:	FUNC-TYPE-SIZE
	02	P1647	E - 10 - A
			1157187

REV 02	DATE: 27 OCT 15	UPDATED WIDE FLANGE AND FOUNDATION VALUES	BY: AMP
REV 01	DATE: 23 JUL 14	UPDATED CLAMPS IN REAR AND SIDE VIEW AND ADDED 170 MPH WIND SPEC COLUMN	BY: TJT

VERTICAL BEAM - FLANGE THICKNESS MUST BE 1/4" - 3/4"

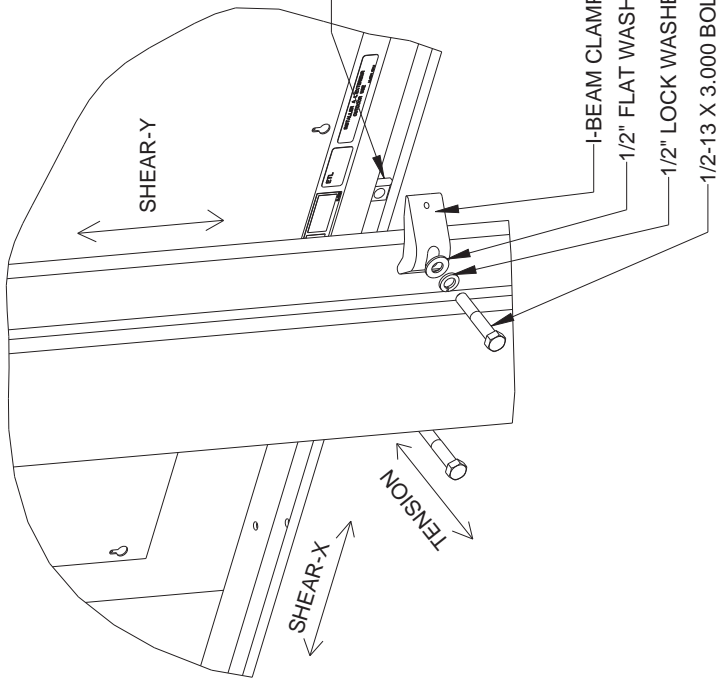
1/2-13 X 3.000 BOLT - BOLT THREAD MUST ENGAGE ENTIRE DEPTH OF SPRING NUT. BOLT MUST BE TIGHTENED TO 40FT-LB TORQUE

1/2" LOCK WASHER

1/2" FLAT WASHER

I-BEAM CLAMP - ASSURE CLAMP IS TIGHTLY ENGAGED TO I-BEAM AND NUT

SPRING NUT



SPRING NUT

\*\*\*CRITICAL\*\*\*

MAKE SURE SPRING NUT IS TURNED TO VERTICAL POSITION INSIDE SCOREBOARD CHANNEL

I-BEAM CLAMP

1/2" FLAT WASHER

1/2" LOCK WASHER

1/2-13 X 3.000 BOLT

EXPLODED REAR ISOMETRIC VIEW

## STANDARD MOUNTING METHOD

MOUNTING INSTRUCTIONS:

1. PLACE SPRING NUTS INTO SCOREBOARD CHANNEL IN APPROXIMATE LOCATION OF VERTICAL BEAMS
2. LIFT SCOREBOARD INTO POSITION
3. MAKE SURE THE 1/2-13 BOLTS ARE AS CLOSE TO THE I-BEAM FLANGES AS POSSIBLE
4. WHEN SCOREBOARD IS ADJUSTED TO FINAL DESIRED POSITION, TIGHTEN BOLTS FIRMLY
5. IF FLANGE THICKNESS IS MORE THAN 3/4" THICK LONGER BOLTS WILL BE REQUIRED AT THE CUSTOMER'S EXPENSE.

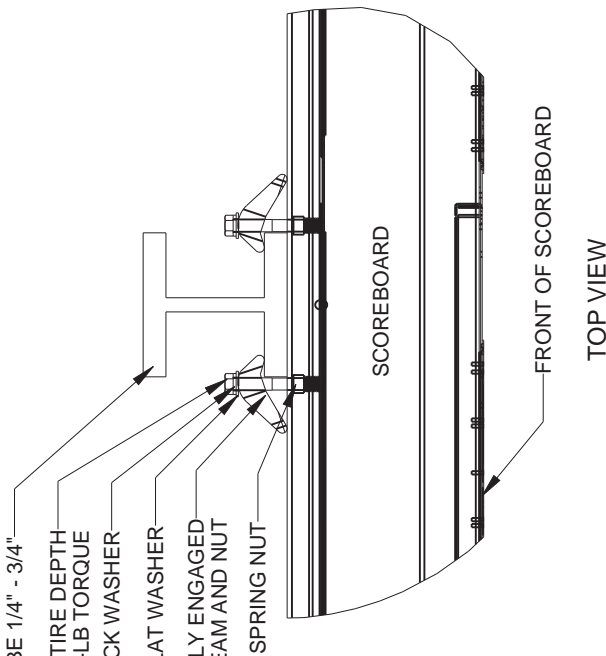
## STRUCTURAL NOTES

ALLOWABLE CAPACITY PER EACH CLAMP:

SHEAR = 160 LBS

TENSION = 2300 LBS

SHEAR AND TENSION LOAD DIRECTION ARE AS INDICATED ON REAR ISOMETRIC VIEW



FRONT OF SCOREBOARD

TOP VIEW

\*\*\*CRITICAL\*\*\*

DO NOT USE ANY LUBRICANT ON ANY MOUNTING HARDWARE OR WARRANTY WILL BE VOIDED

05	22 DEC 15	PER EC-22871; ADDED LUBRICANT NOTE	PJS 18704
04	06 JAN 14	ADDED ALLOWABLE TENSION AND SHEAR CAPACITY DETAILS	JAVA
03	23 OCT 13	PER EC-12382; CHANGED BOLT TORQUE FROM 30 FT-LB TO 40 FT-LB	NJM
02	07 MAR 12	ADDED STANDARD MOUNTING METHODS NOTES	KDD
01	21 FEB 12	CHANGED ROCKER TO I-BEAM	KDD
REV	DATE:		BY:

**DAKTRONICS**  
THE CONCEPTS EXPRESSED AND DETAILS SHOWN ON THIS DRAWING ARE FOR INFORMATION ONLY AND ARE NOT TO BE USED FOR CONSTRUCTION. ANY REVISIONS WITHOUT THE EXPRESS WRITTEN CONSENT OF DAKTRONICS, INC. OR ITS WHOLLY OWNED SUBSIDIARIES. COPYRIGHT 2016 DAKTRONICS, INC. (USA)

PROJECT: OUTDOOR SCOREBOARD

TITLE: P1647; I-BEAM CLAMP MOUNTING

DATE: 22-DEC-15 DIM UNITS: INCHES[MILLIMETERS]

SCALE: 1/8 DO NOT SCALE DRAWING

DESIGN: MCARSRU JOB NO. P1647

DRAWN: MCARSRU E - 07 - A

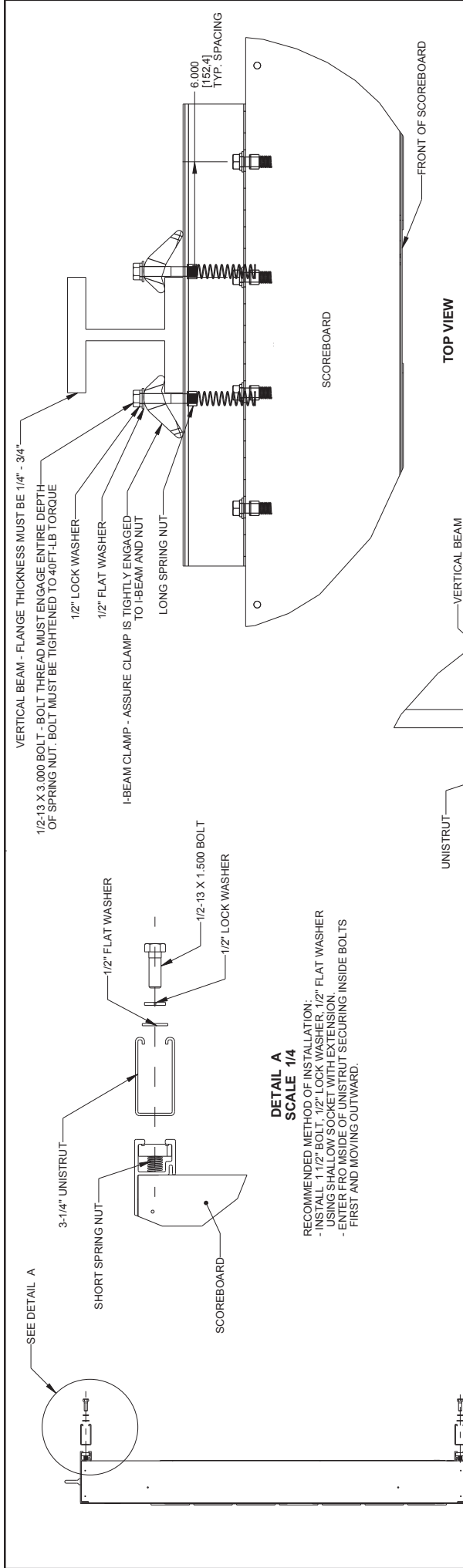


THIRD ANGLE PROJECTION

SHEET 1 OF 1

REV 05

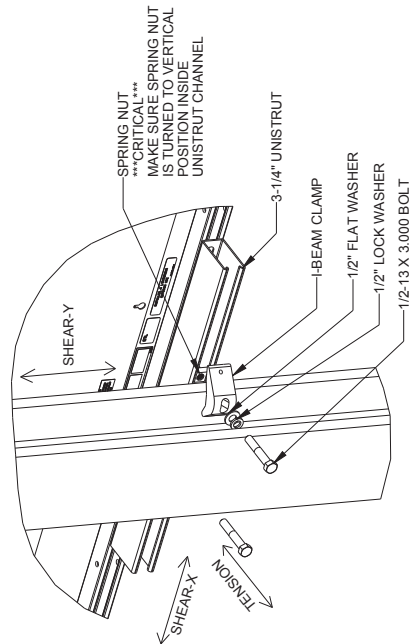
10525665



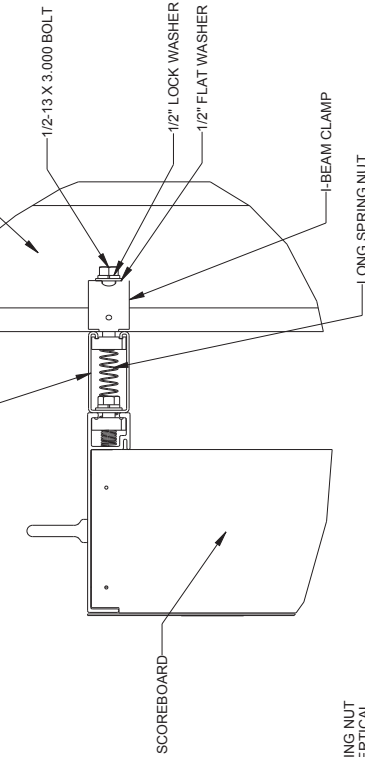
**DETAIL A**  
**SCALE 1/4**

RECOMMENDED METHOD OF INSTALLATION:  
 - INSTALL 1 1/2" BOLT, 1/2" LOCK WASHER, 1/2" FLAT WASHER  
 USING SHALLOW SOCKET WITH EXTENSION.  
 - ENTER FROM INSIDE OF UNISTRUT SECURING INSIDE BOLTS  
 FIRST AND MOVING OUTWARD.

**EXPLODED REAR ROTATED VIEW**  
**UNISTRUT ATTACHMENT**  
**SCALE 1/15**



**TOP VIEW**



## STRUCTURAL NOTES

ALLOWABLE CAPACITY PER COLUMN CONNECTION:  
 SHEAR = 185 LBS  
 TENSION = 2400 LBS

SHEAR AND TENSION LOAD DIRECTION ARE AS INDICATED ON REAR ISOMETRIC VIEW

## STANDARD MOUNTING METHOD

MOUNTING INSTRUCTIONS:

1. PLACE SPRING NUTS INTO SCOREBOARD CHANNEL IN LOCATIONS SHOWN IN TOP VIEW
2. PLACE SPRING NUTS IN UNISTRUT IN APPROXIMATE LOCATION OF VERTICAL BEAMS
3. LIFT SCOREBOARD INTO POSITION
4. MAKE SURE THE 1/2-13 BOLTS ARE AS CLOSE TO THE I-BEAM FLANGES AS POSSIBLE
5. WHEN SCOREBOARD IS ADJUSTED TO FINAL DESIRED POSITION, TIGHTEN BOLTS FIRMLY
6. IF FLANGE THICKNESS IS MORE THAN 3/4" THICK LONGER BOLTS WILL BE REQUIRED AT THE CUSTOMER'S EXPENSE.

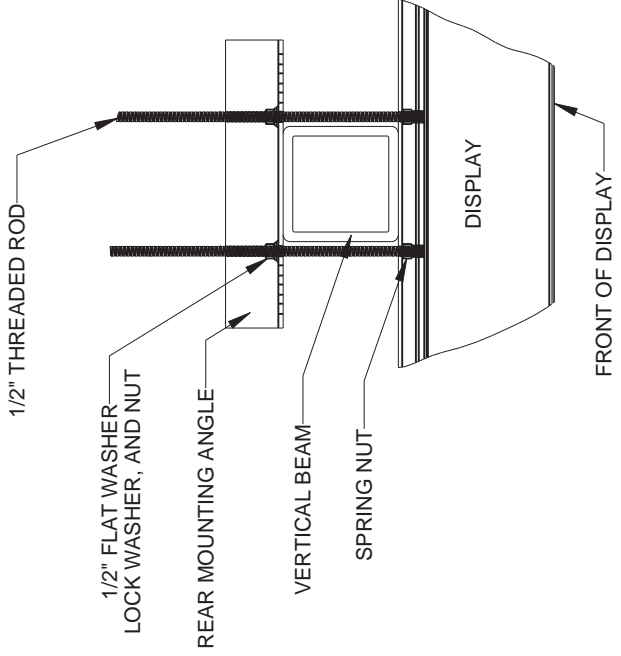
**SIDE VIEW**  
**SCOREBOARD ATTACHMENT**

\*\*\*CRITICAL\*\*\*  
 DO NOT USE ANY LUBRICANT  
 ON ANY MOUNTING HARDWARE  
 OR WARRANTY WILL BE VOIDED

REV	DATE	BY

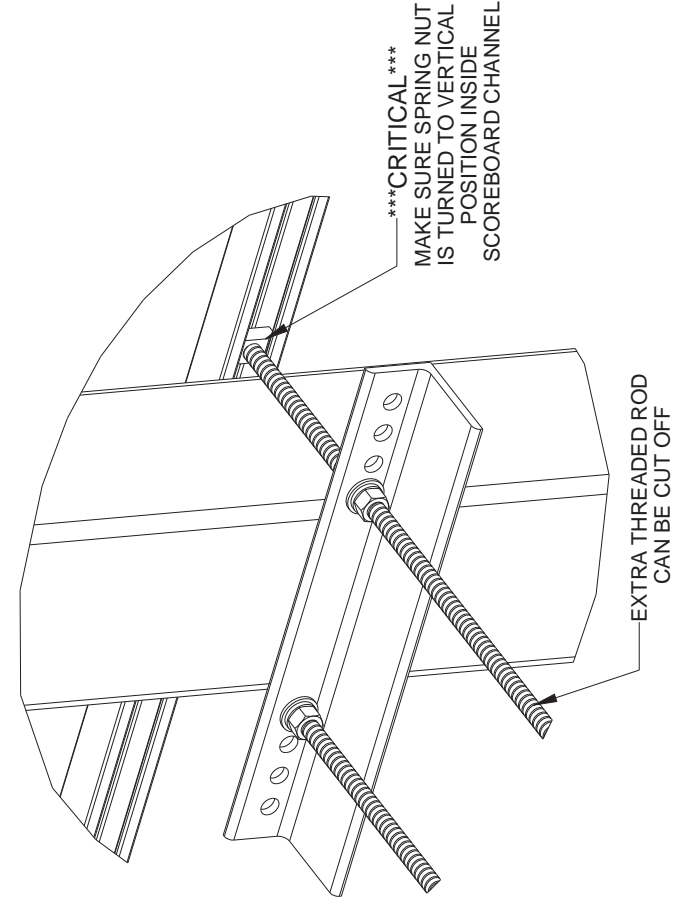
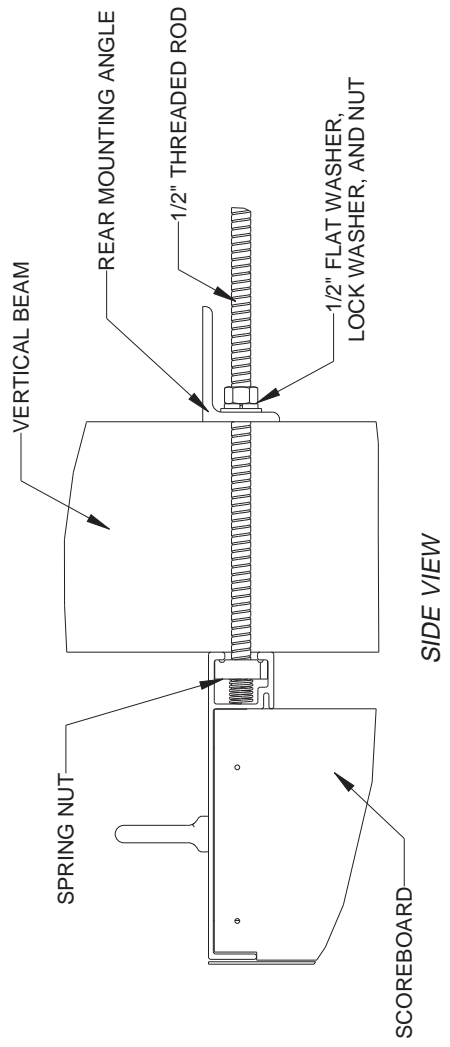
  

<small>THE CONCEPTS EXPRESSED AND THE DATA SHOWN ON THIS DRAWING ARE THE PROPERTY OF DAKTRONICS, INC. ANY REUSE OR REPRODUCTION OF THIS DRAWING WITHOUT THE EXPRESS WRITTEN CONSENT OF DAKTRONICS, INC. IS PROHIBITED. COPYRIGHT 2018 DAKTRONICS, INC. (USA)</small>		
PROJECT: OUTDOOR SCOREBOARD		
TITLE: P1647: LVX I-BEAM CLAMP MOUNTING	DWG UNITS: INCHES (MILLIMETERS)	SHEET
DATE: 18-MAY-18	DO NOT SCALE DRAWING	1 OF 1
SCALE: 1/5	JOB NO. P1647	REV 00
DESIGN: KDRAGT	FUNCTION: TYPE - SIZE	
DRAWN: KDRAGT	E - 07 - B	
Last Modified By: kdragt		3918361



TOP VIEW  
SCALE 1/10

\*\*\*CRITICAL\*\*\*  
DO NOT USE ANY LUBRICANT  
ON ANY MOUNTING HARDWARE  
OR WARRANTY WILL BE VOIDED



STRUCTURAL NOTES:  
- BOLT TORQUE: 30 FT-LB

- NOTES:
- THREADED RODS RUN ALONG BOTH SIDES OF BEAM
  - RODS DO NOT PASS THROUGH THE FLANGES OF THE BEAM
  - NO DRILLING NECESSARY
  - MAKE SURE SPRING NUT IS PERPENDICULAR TO CHANNEL OPENING ON SCOREBOARD

04	22 DEC 15	PER EC-22871; ADDED LUBRICANT WARNING	PJS 18704
03	03 JULY 13	ADDED STRUCTURAL NOTE	TTF
02	20 SEP 12	PER EC-7114; REMOVED CHAMFER FROM OM-133259	LMG
01	06 OCT 11	REPLACED VERTICAL I-BEAM WITH 6" X 6" SQUARE TUBE	JAVA
REV	DATE:		BY:

THE CONCEPTS EXPRESSED AND DETAILS SHOWN ON THIS DRAWING ARE FOR INFORMATION PURPOSES ONLY. THEY ARE NOT TO BE USED AS A BASIS FOR CONSTRUCTION. ANY REVISIONS TO THIS DRAWING MUST BE APPROVED BY DAKTRONICS, INC. OR ITS WHOLLY OWNED SUBSIDIARIES. COPYRIGHT 2016 DAKTRONICS, INC. (USA)

PROJECT: OUTDOOR SCOREBOARDS

TITLE: P1647; POLE MOUNTING OPTIONS

DATE: 22-DEC-15 DIM UNITS: INCHES [MILLIMETERS]

SCALE: 1/5 DO NOT SCALE DRAWING

DESIGN: DOPPELT JOB NO. P1647

DRAWN: DOPPELT

THIRD ANGLE PROJECTION

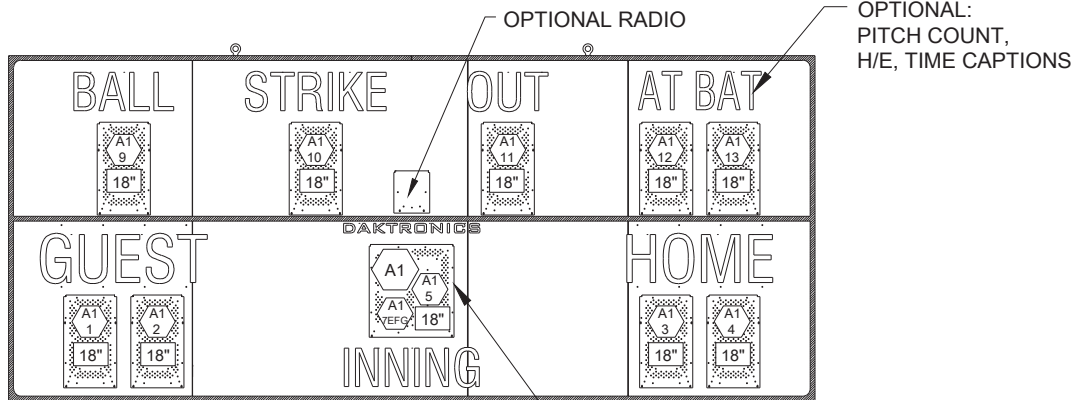
SHEET 1 OF 1

REV 04

1048184

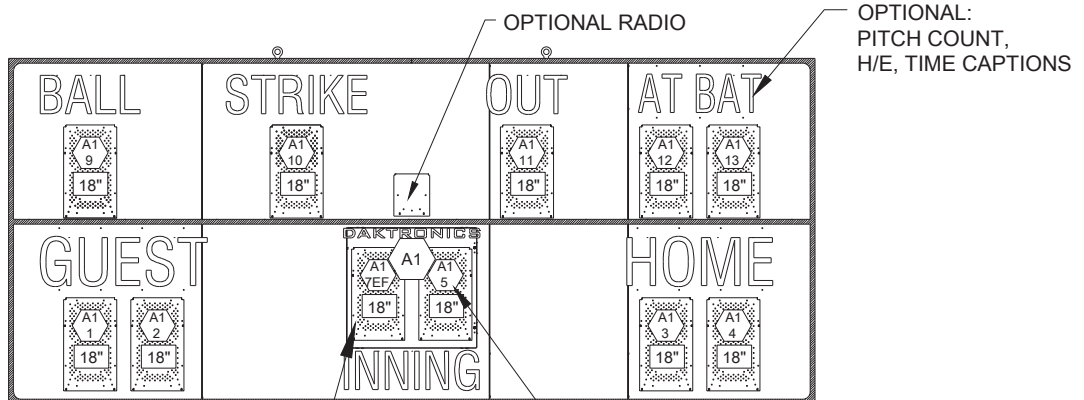


BA-2017-R/A/W



FRONT VIEW

BEFORE JANUARY 2013



\*NOT A FULL DIGIT\*  
WILL ONLY LIGHT UP 2 SEGMENTS  
TO DENOTE A "1"  
THE MAXIMUM INNING COUNT WILL BE 19

FRONT VIEW

AFTER JANUARY 2013


NOTES:

= LED DRIVER NUMBER & LED DRIVER CONNECTOR WIRED TO THAT DIGIT.

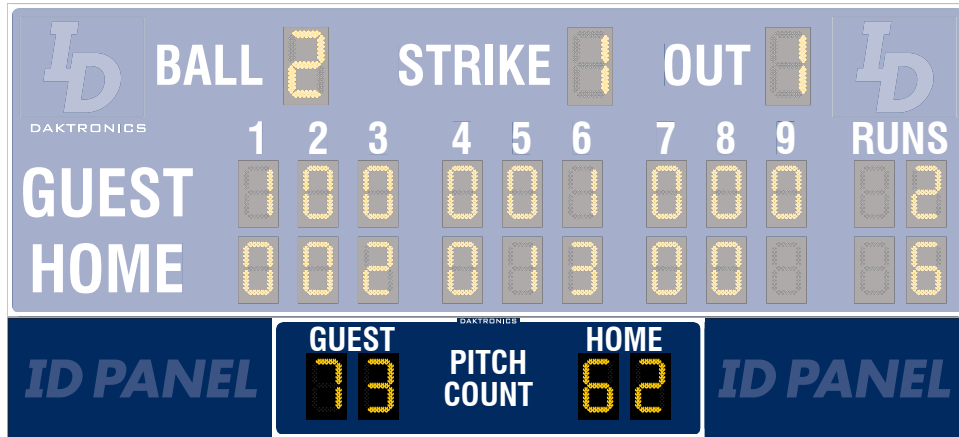
= DIGIT SIZE

= DRIVER NUMBER

REV 03	DATE: 04 AUG 20	PER CN-107571 REMOVED LABELS TO MOVE TO NEW STANDARD	BY: TAN
REV 02	DATE: 18 FEB 15	PER EC-17119, REMOVED DETAIL A AND B ADDED SIGNAL OPTION NOTE CHANGED SLAVE AND MASTER DRIVER NAME	BY: KDB
REV 01	DATE: 03 DEC 12	UPDATED DWG PER EC-8629	BY: AJH

		DAKTRONICS, INC. BROOKINGS, SD 57006		THE CONCEPTS EXPRESSED AND DETAILS SHOWN ON THIS DRAWING ARE CONFIDENTIAL AND PROPRIETARY. DO NOT REPRODUCE BY ANY MEANS WITHOUT THE EXPRESSED WRITTEN CONSENT OF DAKTRONICS, INC. COPYRIGHT 2012 DAKTRONICS, INC.	
DO NOT SCALE DRAWING					
PROJ: OUTDOOR LED SCOREBOARDS					
TITLE: COMPONENT LOCATION; BA-2017-201X-R/A/W					
DESIGN: DOPPELT			DRAWN: LGROOTW		DATE: 22 AUG 11
SCALE: 1=40					
SHEET	REV	JOB NO:	FUNC - TYPE-SIZE	1066282	
	03	P 1647	E - 10 - A		

# DAKTRONICS ADPC-2023 PRODUCT SPECIFICATIONS



ADPC-2023 (20') shown with BA-2030 (sold separately)

These drop-in outdoor LED displays show PITCH COUNT for HOME and GUEST up to 99. The display cabinets come in 5 standard widths to add on to new or existing baseball scoreboards. Cabinets may mount above or below the scoreboard and the display may be centered, left-aligned, or right-aligned. GUEST and HOME digit/caption positions may be swapped. A hand-held switch with HOME/GUEST select, PITCH +1 button, and PITCH -1 button is included with purchase. Display is shown mounted below a baseball scoreboard with optional striping and amber PanaView® digits. All displays are 2'-6" (762 mm) tall and 8" (203 mm) deep.

WIDTH	AD COPY SPACE*	WEIGHT	POWER (120 VAC)**
14'-0" (4.27 m)	2'-6" (762 mm) H x 5'-0" (1.52 m) W	108 lb (49 kg)	<b>Red/Amber Digits:</b> 40 Watts, 0.4 Amp  <b>White Digits:</b> 80 Watts, 0.7 Amp
16'-0" (4.88 m)	2'-6" (762 mm) H x 7'-0" (2.13 m) W	114 lb (52 kg)	
20'-0" (6.10 m)	2'-6" (762 mm) H x 11'-0" (3.35 m) W	136 lb (62 kg)	
25'-0" (7.62 m)	2'-6" (762 mm) H x 16'-0" (4.88 m) W	151 lb (68 kg)	
36'-0" (10.97 m)	2'-6" (762 mm) H x 27'-0" (8.23 m) W	193 lb (88 kg)	

\*When display is centered on the cabinet, there are two separate ad copy spaces, each at half the indicated width.

\*\*Display requires a dedicated circuit. Models with 240 VAC power at half the indicated amperage are also offered (International Use Only).

## DIGITS

- All digits are 15" (381 mm) high.
- Select red, amber, or white LED digits.
- Display features robust weather-sealed digits (see [DD2495646](#)).
- Digits may be dimmed for night viewing.

## CAPTIONS

- All captions are 6" (152 mm) high.
- Standard captions are vinyl, applied to the display face.

## DISPLAY COLOR

Choose from 150+ colors (from Martin Senour® paint book) at no additional cost.

## CONSTRUCTION

Alcoa aluminum alloy 5052 for excellent corrosion resistance

## PRODUCT SAFETY APPROVAL

ETL-listed to UL 48, tested to CSA standards, and CE-labeled

## OPERATING TEMPERATURES

- Display: -22° to 122° Fahrenheit (-30° to 50° Celsius)
- Console: 32° to 130° Fahrenheit (0° to 54° Celsius)



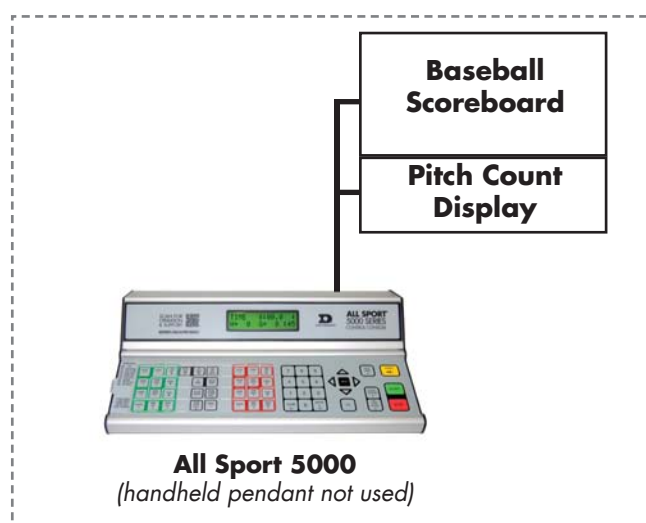
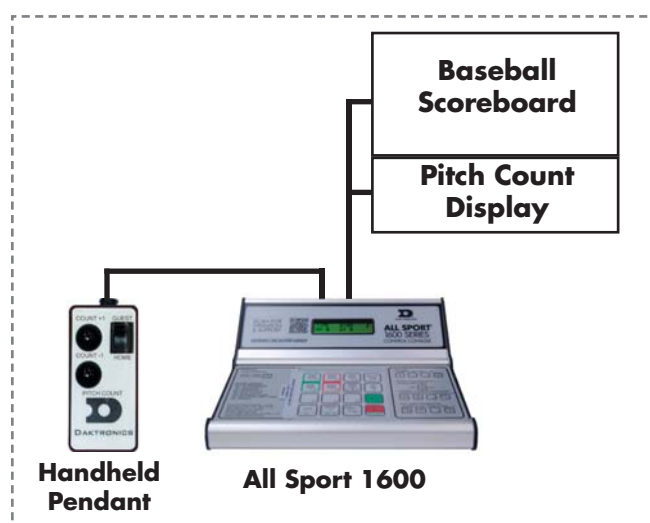
# DAKTRONICS ADPC-2023 PRODUCT SPECIFICATIONS

CONTROL CONSOLES	CONTROL OPTIONS
<b>All Sport® 1600*</b> (see <a href="#">SL-04352</a> )  <i>*May be upgraded to</i> <b>All Sport 5000</b> (see <a href="#">SL-03991</a> )	<b>Wired (standard):</b> One-pair shielded cable of 22 AWG minimum is required. A cover plate with mounted connector and standard 2" x 4" x 2" (51 mm x 102 mm x 51 mm) outlet box is provided. Connector mates with signal cable from control console. <hr/> <b>Wireless (optional):</b> 2.4 GHz spread spectrum radio features 64 non-interfering channels and 8 broadcast groups (see <a href="#">SL-04370</a> ).
<b>DAK Score &amp; MX-1</b> (see <a href="#">DD3888368</a> )	CUSTOMER-SUPPLIED mobile device or tablet with DAK Score app installed communicates via <b>Bluetooth®</b> wireless technology to an MX-1 Interface Box that controls the scoreboard through 2.4 GHz radio or wired connection.

## CONTROL DIAGRAMS

Refer to the diagrams below for typical pitch count control systems, and select one that best fits the needs of your facility. Note that wireless radio control is also available between the control console and pitch count display/baseball scoreboard.

**PITCH COUNT DISPLAYS CANNOT BE CONTROLLED BY THE RC-200 WIRELESS SYSTEM.**



## MOUNTING

Display is typically mounted on vertical beams. The number of vertical beams is determined by the length of the overall display: -14/-16/-20/-25 use two vertical beams and -36 uses three vertical beams. Hardware to mount display on the allotted number of beams is included; hardware for more beams is at additional cost.

## SERVICE ACCESS

Digit panels and electronics are serviced from the front of the display.

## GENERAL INFORMATION

Display provides pitch count capability for two teams. 100% solid state electronics are housed in an all aluminum cabinet. Displays are shipped in one section. Display power is to be provided on a dedicated circuit to prevent loss of game information due to failure of another component on the circuit. Specifications and pricing are subject to change without notice.

## OPTIONS & ACCESSORIES

- Team name captions reversed (HOME on left, GUEST on right)
- Scoreboard border striping
- Multiple caption and striping colors (see [DD2101644](#))
- Individual digit protective screens (see [SL-04939](#))

## FOR ADDITIONAL INFORMATION

- Standard I-beam Mounting: DWG-1129110 (attached)
- Optional Pole Mounting: DWG-52187 (attached)
- Component Locations: DWG-3525150 (attached)
- Architectural Specifications: See [DD3730243](#)

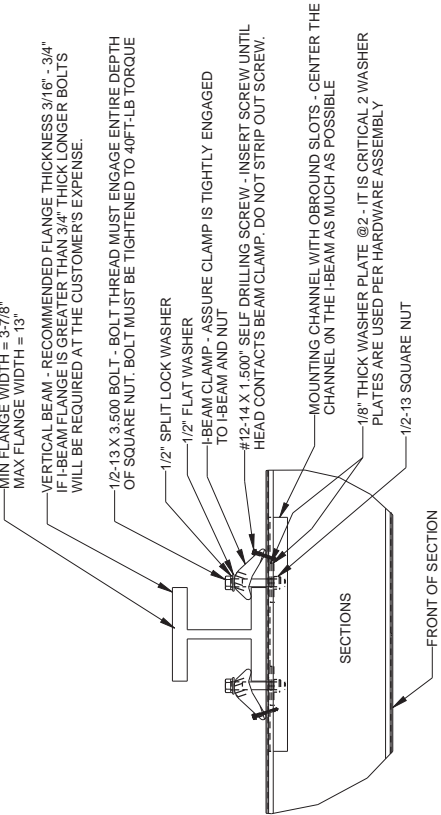
The Bluetooth® word mark and logos are registered trademarks owned by the Bluetooth SIG, Inc. and any use of such marks by Daktronics, Inc. is under license.

[WWW.DAKTRONICS.COM](http://WWW.DAKTRONICS.COM) E-MAIL: [SALES@DAKTRONICS.COM](mailto:SALES@DAKTRONICS.COM)

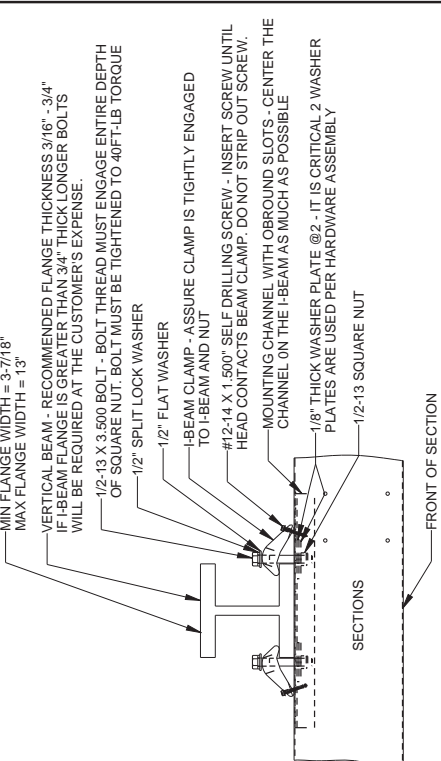
All Sport® and PanaView® are trademarks of Daktronics, Inc.  
 Martin Senour® is a registered trademark of its owner.  
 DD3730253 091520 Page 2 of 5 Copyright © 2017-2020 Daktronics, Inc.



STANDARD SHEETMETAL SCOREBOARD/BACKLIT  
AD PANEL MOUNTING METHOD



STANDARD NON-BACKLIT AD PANEL MOUNTING METHOD

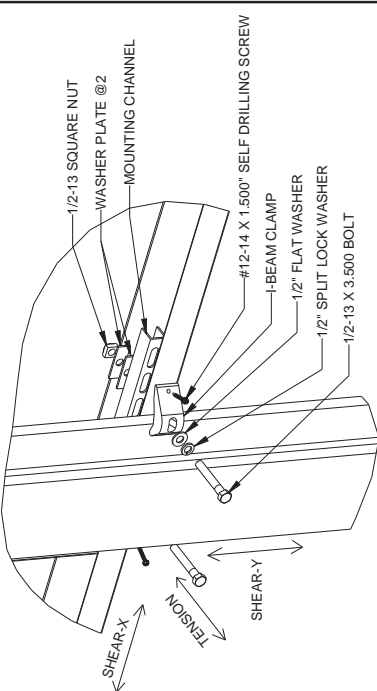


TOP VIEW

TOP VIEW

QUALIFIED FOR SECTIONS UP TO 5' IN HEIGHT  
USING RECOMMENDED STRUCTURE

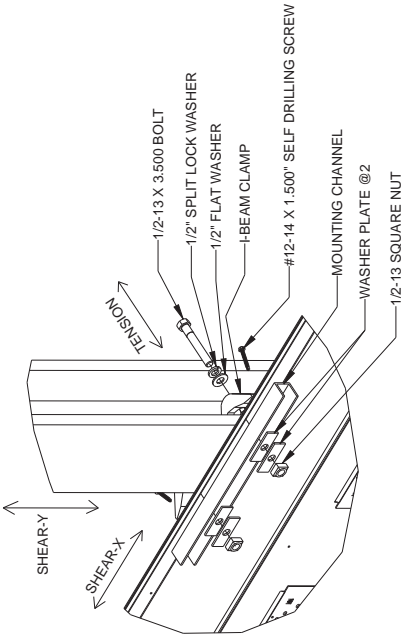
ALLOWABLE CAPACITY PER EACH CLAMP:  
SHEAR = 160 LBS  
TENSION = 1376 LBS  
SHEAR AND TENSION LOAD  
DIRECTION ARE AS INDICATED ON  
ROTATED VIEWS




REAR ROTATED VIEW

MOUNTING INSTRUCTIONS:

1. LIFT THE FIRST SECTION OF THE DISPLAY INTO POSITION AGAINST I-BEAMS.  
NOTE: IF THE DISPLAY IS MADE UP OF MULTIPLE SECTIONS ALWAYS INSTALL THE BOTTOM SECTION FIRST AND WORK UP. STARTING ON THE TOP OF THE SECTION BEING INSTALLED MARK AND DRILL 9/16" HOLES IN THE CENTER OF THE TOP FLANGE OF THE SECTION. MAKE SURE THE HOLES ARE POSITIONED AS CLOSE TO THE I-BEAM FLANGES AS POSSIBLE.
2. INSTALL THE HARDWARE AS SHOWN IN THE TOP VIEW. THE SECTION IN THE DESIRED LOCATION.
3. ONCE THE TOP OF THE SECTION IS SECURE MOVE TO THE BOTTOM OF THE SECTION AND REPEAT THE STEPS ABOVE.
4. IF THE DISPLAY IS MADE OF MULTIPLE SECTIONS REPEAT THE ENTIRE PROCEDURE ABOVE.
5. ENSURE ALL 1/2" HARDWARE IS TORQUED TO THE SPECIFIED AMOUNT.



FRONT ROTATED VIEW

 DAKTRONICS, INC. BROOKINGS, SD 57006		THE CONCEPTS EXPRESSED AND DETAILS SHOWN ON THIS DRAWING ARE CONFIDENTIAL AND PROPRIETARY. NO REPRODUCTION OR TRANSMISSION OF ANY KIND DO NOT REPRODUCE OR TRANSMIT IN ANY MANNER WITHOUT THE WRITTEN CONSENT OF DAKTRONICS, INC. COPYRIGHT 2014 DAKTRONICS, INC.	
DO NOT SCALE DRAWING			
PROJ: OUTDOOR SCOREBOARD			
TITLE: I-BEAM CLAMP MOUNTING, SHEET METAL ATTACHMENT			
DESIGN: KSCHNABEL	DRAWN: KSCHNABEL	DATE: 17-JUN-15	
SCALE: 1/8"			
SHEET: 1 OF 1	REV: 02	JOB NO: P 1763	FUNCTION: E - 10 - B
1129110			

REV: 02	DATE: 17 JUN 15	CHANGED TENSION CAPACITY TO 1376 LBS ADDED MINIMUM AND MAXIMUM FLANGE WIDTHS	BY: AMP
REV: 01	DATE: 8 JUN 14	ADDED ALLOWABLE TENSION AND SHEAR CAPACITY DETAILS ADDED TENSION AND SHEAR DETAILS CHANGED DWG TO B SIZE	BY: JWA



1. USE THE MOUNTING CHANNEL TO DETERMINE WHICH HOLE COMBINATION SHOULD BE USED. BE SURE TO KEEP THE BOLTS AS CLOSE TO THE BEAM AS POSSIBLE.
2. USING THE MOUNTING CHANNEL AS A TEMPLATE, DRILL 9/16" HOLES IN THE UPPER AND LOWER REAR FLANGE OF AD PANEL WHERE THE SUPPORTS WILL GO.
3. PLACE SQUARE NUTS INSIDE CHANNEL AND THREAD BOLTS THROUGH.
4. LIFT AD PANEL INTO POSITION WITH BOLTS STILL IN PLACE.
5. PLACE MOUNTING ANGLES OVER EACH PAIR OF BOLTS AND SECURE WITH LOCK WASHERS AND HEX NUTS.
6. WHEN PANEL IS ADJUSTED TO FINAL DESIRED POSITION, TIGHTEN HEX NUTS FIRMLY.

1. USE THE MOUNTING CHANNEL TO DETERMINE WHICH HOLE COMBINATION SHOULD BE USED. BE SURE TO KEEP THE BOLTS AS CLOSE TO THE BEAM AS POSSIBLE.
2. USING THE MOUNTING CHANNEL AS A TEMPLATE, DRILL 9/16" HOLES IN THE UPPER AND LOWER REAR FLANGE OF AD PANEL WHERE THE SUPPORTS WILL GO.
3. REMOVE BACKSHEETS IN AREAS ABOVE AND BELOW HOLES DRILLED IN STEP 2.
4. PLACE SQUARE NUTS INSIDE CHANNEL AND THREAD BOLTS THROUGH.
5. REPLACE BACKSHEETS REMOVED IN STEP 3.
6. LIFT AD PANEL INTO POSITION WITH BOLTS STILL IN PLACE.
7. PLACE MOUNTING ANGLES OVER EACH PAIR OF BOLTS AND SECURE WITH LOCK WASHERS AND HEX NUTS.
8. WHEN PANEL IS ADJUSTED TO FINAL DESIRED POSITION, TIGHTEN HEX NUTS FIRMLY.

REV 06	DATE 13 JAN 20	PER CAN 69848, REMOVED 1" SQUARE TUBE OPTION	BY: CDO
REV 04	DATE 26 OCT 11	ADDED NOTE FOR USING MOUNTING HARDWARE AT AD PANELS SPICES	BY: MBC
REV 03	DATE 12 APR 10	ADDED 1" TUBE SPACER	BY: KDO
REV 02	DATE 13 AUG 97	INCLUDED INSTRUCTIONS FOR AD PANELS WITH BACKSHEETS	BY: JAA
REV 01	DATE 26 MAY 93	ADDED DESCRIPTION TEXT TO PARTS.	BY: IMG



**DAKTER**  
INCORPORATED

THE CONCEPTS AND DETAILS SHOWN ON THIS DRAWING ARE CONFIDENTIAL AND PROPRIETARY. YOU DO NOT INCUR ANY RIGHTS WITHIN OF THE PATENT AND ARE NOT TO REPRODUCE OR TRANSMIT IN ANY MANNER WITHOUT THE WRITTEN CONSENT OF DAKTER INCORPORATED.

© COPYRIGHT 2000 DAKTER, INC. (USA)

PROJECT: **OUTDOOR INCANDESCENT SCOREBOARDS**

TITLE: **AD PANEL MOUNTING**

DATE: **09 JUL 92**

SCALE: **NONE**

DW UNITS: **INCHES [MILLIMETERS]**

DRAWN: **MGUNDERSO**

DESIGN: **JOB NO.**

CHECKED: **P109**

APPROVED: **JOB NO.**

SHEET: **REV**

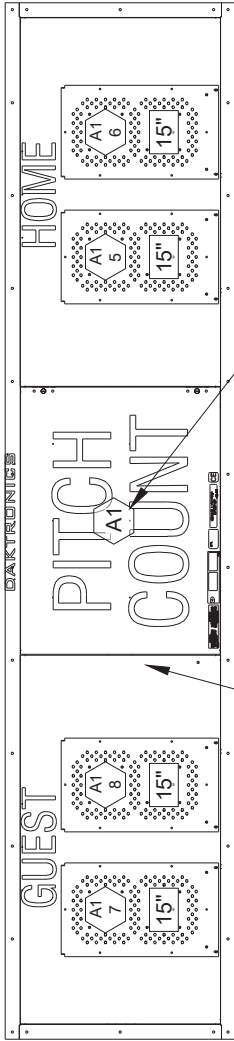
05

FINC: TYPE: SIZE

R-10: B

**52187**

BA-2023, DROP-IN G/H

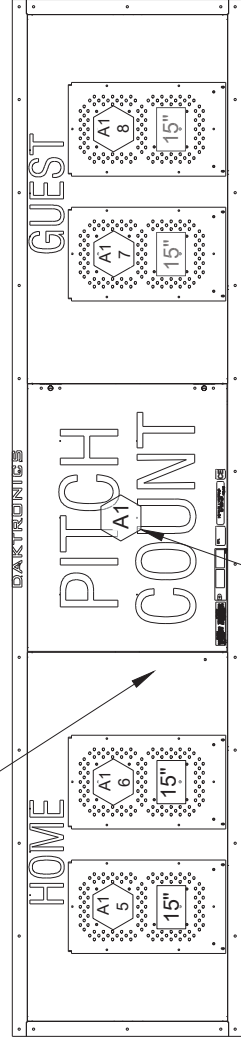


OPTIONAL  
RADIO

FRONT VIEW

PRIMARY DRIVER (A1)  
(KNOCKOUTS FOR 1/2" CONDUIT  
ARE LOCATED ON SIDES OF DISPLAY AND  
LEFT AND RIGHT SIDES OF BACKSHEET) SIGNAL  
OPTION ON THIS DRIVER  
(WIRE, FIBER, OR RADIO)

BA-2023, DROP-IN H/G



OPTIONAL  
RADIO

PRIMARY DRIVER (A1)  
(KNOCKOUTS FOR 1/2" CONDUIT  
ARE LOCATED ON SIDES OF DISPLAY AND  
LEFT AND RIGHT SIDES OF BACKSHEET)  
SIGNAL OPTION ON THIS DRIVER  
(WIRE, FIBER, OR RADIO)

NOTES:

= DRIVER NUMBER

= DIGIT DESIGNATION

= DIGIT SIZE

REV 01	DATE: 04 MAY 18	PER CN-54608: ADDED H/G VERSION	BY: JGANGEL
THE CONCEPTS EXPRESSED AND DETAILS SHOWN ON THIS DRAWING ARE CONFIDENTIAL AND PROPRIETARY. DO NOT REPRODUCE BY ANY MEANS WITHOUT THE WRITTEN PERMISSION OF DAKTRONICS, INC. OR ITS WHOLLY OWNED SUBSIDIARIES. COPYRIGHT 2018 DAKTRONICS, INC. (USA)			
THIRD ANGLE PROJECTION			
PROJECT: OUTDOOR LED SCOREBOARDS			
TITLE: COMPONENT LOCATION: BA-2023, DROP-IN			
DATE: 08 DEC 16	DIM UNITS: INCHES [MILLIMETERS]		REV 01
SCALE: 1 = 20	DO NOT SCALE DRAWING		
DESIGN: KDRAGT	JOB NO.	FUNC - TYPE - SIZE	
DRAWN: PSCHROE	P1753	E - 10 - A	3525150

# OUTDOOR NON-BACKLIT AD & ID PANEL SPECIFICATIONS

All non-backlit ad panels are 8" (203 mm) deep. Sizes are arranged by width from narrowest to widest.

DIMENSIONS HEIGHT x WIDTH		UNCRTATED WEIGHT	
Feet-Inches	Meters	LB	KG
6'-6" x 3'-0"	1.98 x 0.91	59	27
2'-6" x 4'-0"	0.76 x 1.22	30	14
6'-6" x 5'-0"	1.98 x 1.52	98	44
7'-6" x 5'-0"	2.29 x 1.52	113	51
8'-0" x 5'-6"	2.44 x 1.68	132	60
1'-6" x 6'-0"	0.46 x 1.83	27	12
2'-0" x 6'-0"	0.61 x 1.83	36	16
4'-0" x 6'-6"	1.22 x 1.98	78	35
1'-6" x 8'-0"	0.46 x 2.44	36	16
2'-0" x 8'-0"	0.61 x 2.44	48	22
2'-6" x 8'-0"	0.76 x 2.44	60	27
6'-6" x 8'-0"	1.98 x 2.44	156	71
7'-6" x 8'-0"	2.29 x 2.44	180	82
6'-0" x 8'-2"	1.83 x 2.49	147	67
3'-0" x 8'-6"	0.91 x 2.59	77	35
1'-0" x 9'-0"	0.30 x 2.74	27	12
1'-6" x 9'-0"	0.46 x 2.74	41	19
2'-0" x 9'-0"	0.61 x 2.74	54	24
2'-6" x 9'-0"	0.76 x 2.74	68	31
1'-0" x 10'-0"	0.30 x 3.05	30	14
1'-6" x 10'-0"	0.46 x 3.05	45	20
2'-0" x 10'-0"	0.61 x 3.05	60	27
2'-6" x 10'-0"	0.76 x 3.05	75	34
3'-0" x 10'-0"	0.91 x 3.05	90	41
4'-0" x 10'-0"	1.22 x 3.05	120	54
2'-0" x 10'-6"	0.61 x 3.20	63	29
1'-6" x 12'-0"	0.46 x 3.66	54	24
2'-0" x 12'-0"	0.61 x 3.66	72	33
2'-6" x 12'-0"	0.76 x 3.66	90	41
3'-0" x 12'-0"	0.91 x 3.66	108	49
1'-6" x 14'-0"	0.46 x 4.27	63	29
2'-0" x 14'-0"	0.61 x 4.27	84	38
2'-6" x 14'-0"	0.76 x 4.27	105	48
3'-0" x 14'-0"	0.91 x 4.27	126	57
1'-0" x 16'-0"	0.30 x 4.88	48	22
1'-6" x 16'-0"	0.46 x 4.88	72	33
2'-0" x 16'-0"	0.61 x 4.88	96	44
2'-6" x 16'-0"	0.76 x 4.88	120	54
3'-0" x 16'-0"	0.91 x 4.88	144	65
3'-6" x 16'-0"	1.07 x 4.88	168	76

DIMENSIONS HEIGHT x WIDTH		UNCRTATED WEIGHT	
Feet-Inches	Meters	LB	KG
4'-6" x 16'-0"	1.37 x 4.88	216	98
3'-0" x 16'-1.38"	0.91 x 4.91	145	66
1'-0" x 18'-0"	0.30 x 5.49	54	24
1'-6" x 18'-0"	0.46 x 5.49	81	37
2'-0" x 18'-0"	0.61 x 5.49	108	49
2'-6" x 18'-0"	0.76 x 5.49	135	61
3'-0" x 18'-0"	0.91 x 5.49	162	73
4'-0" x 18'-0"	1.22 x 5.49	216	98
1'-0" x 20'-0"	0.30 x 6.10	60	27
1'-6" x 20'-0"	0.46 x 6.10	90	41
2'-0" x 20'-0"	0.61 x 6.10	120	54
2'-6" x 20'-0"	0.76 x 6.10	150	68
3'-0" x 20'-0"	0.91 x 6.10	180	82
4'-0" x 20'-0"	1.22 x 6.10	240	109
4'-0" x 22'-0"	1.22 x 6.71	264	120
3'-0" x 23'-6"	0.91 x 7.16	212	96
2'-0" x 24'-0"	0.61 x 7.32	144	65
2'-6" x 24'-0"	0.76 x 7.32	180	82
3'-0" x 24'-0"	0.91 x 7.32	216	98
1'-0" x 25'-0"	0.30 x 7.62	75	34
1'-6" x 25'-0"	0.46 x 7.62	113	51
1'-8" x 25'-0"	0.51 x 7.62	125	57
2'-0" x 25'-0"	0.61 x 7.62	150	68
2'-6" x 25'-0"	0.76 x 7.62	188	85
3'-0" x 25'-0"	0.91 x 7.62	225	102
3'-6" x 25'-0"	1.07 x 7.62	263	119
4'-0" x 25'-0"	1.22 x 7.62	300	136
2'-6" x 26'-0"	0.76 x 7.92	195	88
2'-0" x 27'-0"	0.61 x 8.23	162	73
2'-6" x 28'-0"	0.76 x 8.53	210	95
3'-0" x 28'-0"	0.91 x 8.53	252	114
2'-0" x 30'-0"	0.61 x 9.14	180	82
4'-0" x 30'-0"	1.22 x 9.14	360	163
1'-6" x 32'-0"	0.46 x 9.75	144	65
2'-0" x 32'-0"	0.61 x 9.75	192	87
2'-6" x 32'-0"	0.76 x 9.75	240	109
3'-0" x 32'-0"	0.91 x 9.75	288	131
4'-0" x 32'-0"	1.22 x 9.75	384	174
1'-0" x 36'-0"	0.30 x 10.97	108	49
1'-6" x 36'-0"	0.46 x 10.97	162	73

WWW.DAKTRONICS.COM E-MAIL: SALES@DAKTRONICS.COM

201 Daktronics Drive, PO Box 5128, Brookings, SD 57006  
Phone: 1-800-325-8766 or 605-692-0200 Fax: 605-697-4746  
SL03761 041520 Page 1 of 2



# OUTDOOR NON-BACKLIT AD & ID PANEL SPECIFICATIONS

DIMENSIONS HEIGHT x WIDTH		UNCRATED WEIGHT	
<i>Feet-Inches</i>	<i>Meters</i>	<i>LB</i>	<i>KG</i>
2'-0" x 36'-0"	0.61 x 10.97	216	98
2'-6" x 36'-0"	0.76 x 10.97	270	122
3'-0" x 36'-0"	0.91 x 10.97	324	147
4'-0" x 36'-0"	1.22 x 10.97	432	196

**Notes:**

1. Lengths and heights listed can be combined to make additional display sizes.
2. For sizes not listed, weight is calculated at 3 pounds per square foot.
3. Optional back sheets are available.

## ATTACHMENT A

### GOLD® Services

#### Scope of Services

##### Services Included

1. Daktronics parts coverage which includes:
  - 1.1. Daktronics Rapid Parts™ Exchange Program for available parts only.
  - 1.2. Repair or replacement of failed electronic parts or assemblies.
  - 1.3. Shipping of repaired or replaced failed electronic components from Daktronics.
2. Technical support via telephone during business hours as defined below.
3. Access to the Service Coordination Center.

**Gold shall not include** nor be construed to include any service or support that is not expressly stated above in the definition of the Gold service. Examples of services that are not within the scope of Gold service include, but are not limited to, the following:

1. On-site labor to diagnose and/or replace failed electronic components.
2. Remote monitoring services.
3. After hours telephone support.

Above listed exclusions are available as billable services. Quotes may be provided upon request.

#### Business Hours:

Monday through Friday, 8 am to 5 pm CST (excludes Daktronics observed holidays).

#### Purchaser Responsibilities

The items listed below are the responsibility of the Purchaser.

1. Purchaser is responsible for routine operator functions such as content creation or scheduling.
2. Purchaser is responsible for management of customer-owned spare parts inventory.
3. Purchaser is responsible for costs of any on-site labor to diagnose and/or replace failed electronic components.
4. Purchaser is responsible for providing lift access to the display.
5. Purchaser is responsible for the maintenance items listed below; failure to properly maintain equipment may, at Daktronics' sole discretion, relieve Daktronics of its responsibilities under the Terms and Conditions of Extended Service attached hereto.
  - 5.1. Throughout the term of this Agreement, Purchaser shall maintain site conditions within the common environmental range of all system devices as specified by Daktronics.
  - 5.2. Purchaser is responsible for routine maintenance functions.
  - 5.3. Purchaser is responsible for purchasing and maintaining antivirus software on all control devices connected to Daktronics equipment. (See Daktronics Knowledge Base for list of supported software. DD2079868 <https://www.daktronics.com/support/kb/Pages/DD2079868.aspx>)

Gold® is a registered Daktronics trademark.

This Service Agreement shall be subject to the following [Terms and Conditions of Extended Service](#).

- o [www.daktronics.com/terms\\_conditions/SL-05662.pdf](http://www.daktronics.com/terms_conditions/SL-05662.pdf)