



**CENTRALBIDDING**  
FROM CENTRAL AUCTION HOUSE

**5000130298 ONE TIME PURCHASE OF TRASH PUMPS, 6 INCH SELF  
PRIMING, TRAILOR MOUNT FOR THE JEFFERSON PARISH SEWERAGE  
DEPARTMENT.**

Jefferson Parish Government

Project documents obtained from [www.CentralBidding.com](http://www.CentralBidding.com)

30-Apr-2020 12:05:57 PM



**Bid Number 50 - 130298**

**ONE TIME PURCHASE OF TWO TRASH PUMPS, 6 INCH SELF PRIMING,  
TRAILER MOUNT FOR JEFFERSON PARISH SEWERAGE DEPARTMENT.**

**MAY 14, 2020 AT 2:00 PM**

**ATTENTION VENDORS!!!**

**Please review all pages and respond accordingly, complying with all provisions  
in the technical specifications and Jefferson Parish Instructions for Bidders and  
General Terms and Conditions. All bids must be received in the Purchasing  
Department by the bid due date and time.**

**Jefferson Parish Purchasing Department  
200 Derbigny Street  
General Government Building, Suite 4400  
Gretna, LA 70053  
Donna Reamey  
Dreamey@Jeffparish.net  
504-364-2684**



## JEFFERSON PARISH

### DEPARTMENT OF PURCHASING

CYNTHIA LEE SHENG  
PARISH PRESIDENT

RENNY SIMNO  
DIRECTOR

### PURCHASING DEPARTMENT ANNOUNCEMENT

Due to Covid-19 safety precautions, all public bid openings have been suspended. The bid opening will continue and be made available via phone conference. Advertised bids will be accepted through Central Bidding or manual submission.

Manually-submitted bids will only be accepted from 1:30 – 1:59 p.m. on the day of the bid opening or by appointment. If submitting on the day of the bid opening, bidders must submit at the General Government Building. The Purchasing Department will have a table set up to receive sealed bids at the entrance inside of the building.

The bid opening will be made available by calling the following:

**Dial-in Number:** (504) 323-1800

**Meeting ID:** 181357

---

The bid opening will begin at 2:30 p.m.

While the Purchasing Department is closed to the public, if you have any questions, please contact the department at (504) 364-2678 or e-mail [purchasing@jeffparish.net](mailto:purchasing@jeffparish.net) for assistance.

GENERAL GOVERNMENT BLDG. – 200 DERBIGNY ST., SUITE 4400, GRETN, LA 70053  
OFFICE 504.364.2678

JOSEPH S. YENNI BLDG. – 1221 ELMWOOD PARK BLVD., SUITE 404, JEFFERSON, LA 70123  
OFFICE 504.364.2678  
EMAIL: [PURCHASING@JEFFPARISH.NET](mailto:PURCHASING@JEFFPARISH.NET) WEBSITE: [WWW.JEFFPARISH.NET](http://WWW.JEFFPARISH.NET)

**SPECIFICATIONS  
6 inch X 6 inch SELF-PRIMING HORIZONTAL SEWAGE PUMP  
JEFFERSON PARISH  
DEPARTMENT OF SEWERAGE**

- **GENERAL**

Vendor shall furnish two (2) Thompson 6 inch self-priming trailer mounted trash pumps, Model No. 6HT-DIST-4LE2T, or approved equal. The pumps shall be supplied by the factory authorized Thompson Pump agent for Jefferson Parish, Louisiana, or for the brand they are bidding. Any bids submitted for other pump manufacturers must include in their bid all information needed to fully demonstrate complete compliance with the requirements of these specifications. It will be the bidder's responsibility to provide adequate information necessary for complete evaluation of their proposed equipment. Jefferson Parish shall be the sole judge as to the equality of the alternate manufacturer's offering. Jefferson Parish reserves the right to reject any bids that are incomplete or do not demonstrate that they are equal to the requirement of these specifications.

- **GENERAL DESCRIPTION**

The unit shall be a 6-inch portable horizontal self-priming centrifugal trash pump driven by a water-cooled diesel engine. The pump shall be self-priming and capable of handling large volumes of air, water, and solids. End-suction centrifugal pumps requiring add-on systems for priming will not be accepted. The unit shall be a Thompson model 6HT-DIST-4LE2T or approved equal.

- The complete pump package shall be manufactured in a plant that is registered to ISO9001:2008 and a copy of the Certificate shall be provided with the bid submittal. Bids submitted without the Certificate will be rejected.
- The pump shall be designated and manufactured in conformance with CPB / AEM standards.

- **ISUZU DIESEL ENGINE**

- The engine shall be a four cylinder, four cycle, water-cooled, turbo charged, Final Tier IV diesel engine, Isuzu model 4LE2T, or equal. It shall be capable of producing 40 continuous duty horsepower at 1,800 rpm.
- The engine shall drive the pump via an elastomeric torsion drive coupling.
- The engine shall have an industrial type battery with 175-amp hour rating and minimum 990 cold-cranking amps, with 175 amp reserve, mounted in a lockable frame.
- A 12-volt starter and alternator charging system shall be provided.
- Engine shall have a hospital grade silencer muffler.
- Engine shall have an electronic type governor.
- Engine shall have variable speed throttle control.
- Engine shall have safety shutdown switches for low oil pressure and high coolant temperature.

## BID SPECIFICATIONS FOR BID # 50-130298

- An instrument panel shall be provided in the enclosure and mounted on rubber isolators.
- Instrument panel shall contain the following instrumentation and controls: key switch, tachometer, hour meter, oil pressure gauge, water temperature gauge, and charge indicator lamp.

### • CENTRIFUGAL PUMP

- The centrifugal pump shall be a 6 inch x 6 inch horizontal self-priming centrifugal sewage pump model J6-250-TWG manufactured by Thompson Pump, or approved equal.
- The volute shall be integrally cast in the pump casing. Volute and pump casing shall be constructed of cast iron of no lesser grade than class 30.
- The centrifugal pump shall contain a self-cleaning priming passage (re-prime port) positioned tangentially to the fluid flow path to prevent plugging. Re-prime port designs that include conduits positioned directly in the fluid flow path will not be accepted.
- The impeller shall be two-vane, non-clogging, balanced, semi-open, with full rear shroud, ductile iron, and shall incorporate rear-equalizing vanes to reduce axial loading and prolong seal and bearing life.
- The pump shaft shall be made of SAE 4140 alloy steel. A shaft sleeve composed of 304 stainless steel shall be fitted to the shaft to protect the shaft from wear from the mechanical seal and lip seal.
- The mechanical seal shall be a single, inside mounted, non-pusher type with self-adjusting elastomeric bellows. The seal faces shall be constructed of Tungsten Carbide. All other seal components shall be 304 stainless steel and viton rubber. Neither outside mounted seals or packing will be accepted.
- The seal chamber shall have a tapered bore design, which allows removal of solids and entrained gases from behind the impeller. Seal housing shall be designed to provide adequate lubrication to the seal faces during extended periods of pump dry running. Seal housing shall provide grease lubrication to the seal.
- The pump shaft shall be supported by two bearings of ample size and proper design to withstand typical axial and radial loading imposed on the bearings during normal operation. Bearings shall be grease lubricated.
- The pump shall be equipped with a replaceable wear plate to protect the pump casing from wear. The wear plate shall be equipped with abrasion resistant rubber facing to extend service life.
- The pump shall have a back pullout design allowing the removal of the entire rotating assembly as a unit from the pump casing.
- The pump shall be equipped with a front cleanout cover allowing access to the impeller for removing trash or debris without disturbing the piping. Units not meeting this requirement will not be accepted.
- The pump shall incorporate a full flow suction non-return valve to retain liquid in the suction line to eliminate re-priming with each cycle. The suction

## BID SPECIFICATIONS FOR BID # 50-130298

non-return valve shall be a weighted flapper style valve constructed of cast-iron and two-ply nitrile rubber with nylon reinforcement.

- The pump shall incorporate a drain cover for draining the pump casing in freezing weather. The cover shall be removable without the need of special tools.
- The pump shall be capable of delivering 1,300 gallons per minute at 1,800 rpm.
- The pump shall be capable of generating a closed discharge valve (shutoff) head of no less than 84 feet at 1,800 rpm.
- Centrifugal pump shall be capable of handling up to 3-inch diameter non-compressible spherical solids.
- Centrifugal pump shall be capable of fully self-priming on its own with a 25-ft static suction lift within two minutes when the pump is pre-filled with water.
- The pump shall be furnished with a liquid-filled vacuum gauge for system diagnostics.
- The pump inlet shall be equipped with a 6 inch MNPT fitting.
- The pump outlet shall be equipped with a 6 inch, 90° elbow and 6 inch MNPT fitting.
- A 6 inch FNPT strainer shall be provided.

### • MOUNTING FRAME

- The complete power unit shall be mounted on a combination frame/single wall fuel tank constructed of tubular steel, approximate length 90 inches, approximate width 48 inches, with a fuel capacity of 62 US gallons.
- The frame shall incorporate an integral lifting bail capable of lifting the entire unit.
- Fuel tank shall have two clean-out ports located at opposite ends of the tank.
- Fuel tank shall have a removable basket strainer mounted in the fill port and a lockable cap.

### • TRAILER

- The complete pump set shall be factory mounted on a site trailer meeting NHTSA, DOT Part 571 standards 108, 119, and 120.
- Trailer shall include the following:
  - Single removable axle with leaf spring suspension
  - Two ST225/75R15-D tires.
  - Removable tongue assembly with 3 inch adjustable lunette eye hitch and safety chains.
  - Removable steel diamond plate fenders.
  - Lashing rings.
  - One top wind swivel 15 inch retractable height tongue-mounted jack stand.
  - Two front and two rear stabilizing stands.
  - DOT light package including stop, turn, tail, and side marker lights, and license bracket.

DATE: 4/28/2020  
BID NO.: 50-00130298

INVITATION TO BID  
THIS IS NOT AN ORDER

Page: 1

**JEFFERSON PARISH**

PURCHASING DEPARTMENT  
P.O. BOX 9  
GRETN, LA. 70054-0009  
504-364-2678

BUYER: DREAMEY@jeffparish.net

**BIDS WILL BE RECEIVED IN THE WEST BANK PURCHASING DEPT, SUITE 4400, JEFFERSON PARISH GENERAL GOVERNMENT BUILDING, 200 DERBIGNY STREET, GRETN, LA 70053 UNTIL 2:00 PM, 5/14/2020 AND PUBLICLY OPENED THEREAFTER.**

For convenience, bidders may also submit bids in the East Bank Purchasing Department, Suite 404, Jefferson Parish Joseph S. Yenni Building, 1221 Elmwood Park Blvd., Jefferson LA 70123. However, if submitting bids on the day of bid opening, bidders must submit at the West Bank location only. All bids will be publicly opened at the West Bank location.

At no charge, bidders may also submit via Jefferson Parish's electronic procurement page by visiting [www.jeffparishbids.net](http://www.jeffparishbids.net) to register for this free site. Additional instructions are included in the text box highlighting electronic procurement.

**LATE BIDS WILL NOT BE ACCEPTED**

Unless submitting via online (see Page 3), each bid must be submitted in a sealed envelope bearing on the outside; the name of the Bidder, his address, and the name of the project for which the bid is submitted and the bid number.

**NOTE: ONLY BIDS WRITTEN IN INK OR TYPEWRITTEN, AND PROPERLY SIGNED BY A MEMBER OF THE FIRM OR AUTHORIZED REPRESENTATIVE, WILL BE ACCEPTED. PENCIL AND/OR PHOTOSTATIC FIGURES OR SIGNATURES SHALL RESULT IN BID REJECTION.**

**INSTRUCTIONS FOR BIDDERS AND GENERAL CONDITIONS**

**THE FOLLOWING INSTRUCTIONS APPLY TO ALL BIDS**

All bids submitted are subject to these instructions and general conditions and any special conditions and specifications contained herein, all of which are made part of this bid proposal reference. By submitting a bid, vendor agrees to comply with all provisions of Louisiana Law as well be in compliance with the Jefferson Parish Code of Ordinances, Louisiana Code of Ethics, applicable Jefferson Parish ethical standards and Jefferson Parish Resolution No. 113646 and/or Resolution No. 113647.

Jefferson Parish adheres to the Louisiana Code of Governmental Ethics, contained in Louisiana Revised Statutes Annotated, R.S. 42:1101, et seq. Vendor/Proposer by this submission, warrants that there are no "conflicts of interest" related to this procurement that would violate applicable Louisiana Law. Violation of the Louisiana Code of Governmental Ethics may result in rescission of contract, permit or licenses, and the imposition of fines and/or penalties, without contractual liability to the public in accordance with applicable law.

All vendors submitting bids should register as a Jefferson Parish vendor if not already yet registered. Registration forms may be downloaded from <http://purchasing.jeffparish.net> and by clicking on Vendor Information. Current W-9 forms with respective Tax Identification numbers and vendor applications may be submitted at any time; however, if your company is not registered and/or a current W-9 form is not on file, vendor registration is mandatory. Vendors may experience a delay in payment if your company is not a registered vendor with Jefferson Parish.

All quotations shall be based on F.O.B. Agency warehouse or job site, anywhere within the Parish as designated by the Purchasing Department. This provision does not apply to public works projects

JEFFERSON PARISH requires all products to be new (current) and all work must be performed according to standard practices for the project. Unless otherwise specified, no aftermarket parts will be accepted. Unless otherwise specified, all workmanship and materials must have at least one (1) year guaranty, in writing, from the date of delivery and/or acceptance of the project. Any deviations or alterations from the specifications must be indicated and/or supporting documentation supplied with bid submission.

Bidders should submit all questions in writing via email to the buyer's email address as indicated above, no later than Five (5) working days prior to the bid opening. Bid numbers should be mentioned in all requests. If submitting online, vendors may send questions via the E-Procurement site no later than Five (5) working days prior to the bid opening.

If this bid requires a pre-bid conference (see Additional Requirements section), bidders are advised that such conference will be held to allow bidders the opportunity to identify any discrepancies in the bid specifications and seek further clarification regarding instructions. The Purchasing Department will issue a written response to bidders' questions in the form of an Addendum. Please note that all official communication will be expressed in the form of an addendum.

Visit our website at [HTTP://PURCHASING.JEFFPARISH.NET](http://PURCHASING.JEFFPARISH.NET)

DATE: 4/28/2020

BID NO.: 50-00130298

Page: 2

All formal Addenda require written acknowledgement on the bid form by the bidder. Failure to acknowledge an Addendum on the bid form shall cause the bid to be rejected. JEFFERSON PARISH reserves the right to award bid to next lowest responsive and responsible bidder in this event.

JEFFERSON PARISH will accept one price for each item unless otherwise indicated. Two or more prices for one item will result in bid rejection. Bidders are required to complete, sign and return the bid form and/or complete and return the associated line item pricing forms as indicated. Vendors must not alter the bid forms. Doing so will cause the bid to be rejected.

A corporate resolution or written evidence of the individual signing the bid having such authority must be submitted with the bid. Failure to comply will cause bid to be rejected. For corporate entities, such written evidence may be a printout of the Louisiana Secretary of State's website listing the signatory as an officer. Such printout shall be included with the bid submission. Bids submitted by Owners or Sole Proprietorships must include certification that he or she owns the entity for which the bid is signed. This documentation must be submitted with the bid. Failure to do so will result in bid rejection.

NOTE: A sample corporate resolution can be downloaded from our website <http://purchasing.jeffparish.net> or you may provide your own document. A sample certification of sole proprietorship can also be downloaded from our website <http://purchasing.jeffparish.net> or you may provide your own document.

### INSTRUCTIONS FOR BIDDERS AND GENERAL CONDITIONS

A. AWARD OF CONTRACT: JEFFERSON PARISH reserves the right to award contracts or place orders on a lump sum or individual item basis, or such combination, as shall in its judgment be in the best interest of JEFFERSON PARISH. Every contract or order shall be awarded to the LOWEST RESPONSIVE and RESPONSIBLE BIDDER, taking into consideration the CONFORMITY WITH THE SPECIFICATIONS and the DELIVERY AND/OR COMPLETION DATE. SPLIT AWARDS MADE TO SEVERAL VENDORS WILL ONLY BE GRANTED TO THOSE DEEMED RESPONSIVE AND RESPONSIBLE.

All bid prices shall remain valid for 45 days. Jefferson Parish and the lowest responsive and responsible bidder(s) by mutual written consent may mutually agree to extend the deadline for award by one (1) or more extensions of thirty (30) calendar days.

PROTESTS: Only those vendors that submit bids in response to this solicitation may protest any element of the procurement, in writing to the Director of the Purchasing Department. Written protest must be received within 48 hours of the release of the bid tabulation by the Purchasing Department. After consultation, the Parish Attorney's Office will then respond to protests in writing. (For more information, please see Chapter 2, Article VII, Division 2, Sec. 2-914.1 of the Jefferson Parish Code of Ordinances.)

PREFERENCE: Unless federal funding is directly spent by Jefferson Parish for this purchase, preference is hereby given to materials, supplies, and provisions produced, manufactured or grown in Louisiana, quality being equal to articles offered by competitors outside the state. "LSA – R.S. 38:2251-2261"

B. USE OF BRAND NAMES AND STOCK NUMBERS: Where brand names and stock numbers are specified, it is for the purpose of establishing certain minimum standards of quality. Bids may be submitted for products of equal quality, provided brand names and stock numbers are specified. Complete product data may be required prior to award.

C. CANCELLATION OF CONTRACT: JEFFERSON PARISH reserves the right to cancel all or any part if not shipped promptly. No charges will be allowed for parking or cartage unless specified in quotation. The order must not be filled at a higher price than quoted. JEFFERSON PARISH reserves the right to cancel any contract at anytime and for any reason by issuing a THIRTY (30) day written notice to the contractor.

For good cause and as consideration for executing a contract with Jefferson Parish, vendor conveys, sells, assigns and transfers to Jefferson Parish or its assigns all rights, title and interest in and to all causes of action it may now or hereafter acquire under the antitrust laws of the United States and the State of Louisiana, relating to the particular good or services purchased or acquired by Jefferson Parish.

D. PRICES: Jefferson Parish is exempt from paying sales tax under LSA-R.S. 47:301 (8)(c). All prices for purchases by Jefferson Parish of supplies and materials shall be quoted in the unit of measure specified and unless otherwise specified, shall be exclusive of state and Parish taxes. The price quoted for work shall be stated in figures. In the event there is a difference in unit prices and totals, the unit price shall prevail.

Quantities listed are for bidding purposes only. Actual requirements may be more or less than quantities listed.

Bidders are not to exclude from participation in, deny the benefits of, or subject to discrimination under any program or activity, any person in the United States on the grounds of race, color, national origin, or sex; nor discriminate on the basis of age under the Age Discrimination Act of 1975, or with respect to an otherwise qualified handicapped individual as provided in Section 504 of the Rehabilitation Act of 1973, or on the basis of religion, except that any exemption from such prohibition against discrimination on the basis of religion as provided in the Civil Rights Act of 1964, or Title VI and VII of the Act of April 11, 1968, shall also apply. This assurance includes compliance with the administrative requirements of the Revenue Sharing final handicapped discrimination provisions contained in Section 51.55 (c), (d), (e), and (k)(5) of the Regulations. New construction or renovation projects must comply with Section 504 of the 1973 Rehabilitation Act, as amended, in accordance with the American National Standard Institute's specifications (ANSI A17.1-1961).

Jefferson Parish and its partners as the recipients of federal funds are fully committed to awarding a contract(s) to firm(s) that will provide high quality services and that are dedicated to diversity and to containing costs. Thus, Jefferson Parish strongly encourages the involvement of minority and/or woman-owned business enterprises (DBE's, including MBE's, WBE's and SBE's) to stimulate participation in procurement and assistance programs.

DATE: 4/28/2020

BID NO.: 50-00130298

Page: 3

## INSTRUCTIONS FOR BIDDERS AND GENERAL CONDITIONS

The purpose and intention of this invitation to bid is to afford all suppliers an equal opportunity to bid on all construction, maintenance, repair, operating supplies and/or equipment listed in this bid proposal. JEFFERSON PARISH WILL ACCEPT ONE BID ONLY FROM EACH VENDOR. Items bid must meet specifications.

Advertised bids will be tabulated and a copy of the tabulation will be forwarded to each responding bidder.

### IN ACCORDANCE WITH STATE REGULATIONS JEFFERSON PARISH OFFERS ELECTRONIC PROCUREMENT TO ALL VENDORS

This electronic procurement system allows vendors the convenience of reviewing and submitting bids online. This is a secure site and authorized personnel have limited read access only. Bidders are encouraged to submit electronically using this free service; while the website accepts various file types, one single PDF file containing all appropriate and required bid documents is preferred. Bidders submitting uploaded images of bid responses are solely responsible for clarity. If uploaded images/documents are not legible, then bidder's submission will be rejected. Please note all requirements contained in this bid package for electronic bid submission.

Please visit our E-Procurement Page at [www.jeffparishbids.net](http://www.jeffparishbids.net) to register and view Jefferson Parish solicitations. For more information, please visit the Purchasing Department page at <http://purchasing.jeffparish.net>.

The general specifications for construction projects and the purchase of materials, services and/or supplies are those adopted by the JEFFERSON PARISH Council by Resolution No. 113646 or 113647 dated 12/09/09. The general conditions adopted by this resolution shall be considered as much a part of this document as if they were written wholly herein. A copy may be obtained from the Office of the Parish Clerk, Suite 6700, Jefferson Parish General Government Building, 200 Derbigny Street, Gretna, LA 70053. You may also obtain a copy by visiting the Purchasing Department webpage at <http://purchasing.jeffparish.net> and clicking on Online Forms.

### ADDITIONAL REQUIREMENTS FOR THIS BID

PLEASE MATCH THE NUMBERS PRINTED IN THIS BOX WITH THE CORRESPONDING INSTRUCTIONS BELOW.

13, 15

1. All bidders must attend the MANDATORY pre-bid conference and will be required to sign in and out as evidence of attendance. In accordance with LSA R.S. 38:2212(I), all prospective bidders shall be present at the beginning of the MANDATORY pre-bid conference and shall remain in attendance for the duration of the conference. Any prospective bidder who fails to attend the conference or remain for the duration shall be prohibited from submitting a bid for the project.
2. Attendance to this pre-bid conference is optional. However, failure to attend the pre-bid conference shall not relieve the bidder of responsibility for information discussed at the conference. Furthermore, failure to attend the pre-bid conference and inspection does not relieve the successful bidder from the necessity of furnishing materials or performing any work that may be required to complete the work in accordance with the specification with no additional cost to the owner.
3. Contractor must hold current applicable JEFFERSON PARISH licenses with the Department of Inspection and Code Enforcement. Contractor shall obtain any and all permits required by the JEFFERSON PARISH Department of Inspection and Code Enforcement. The contractor shall be responsible for the payment of these permits. All permits must be obtained prior to the start of the project. Contractor must also hold any and all applicable Federal and State licenses. Contractor shall be responsible for the payment of these permits and shall obtain them prior to the start of the project.
4. A LA State Contractor's License will be required in accordance with LSA R.S. 37-2150 et. seq. and such license number will be shown on the outside of the bid envelope. Failure to comply will cause the bid to be rejected. Additionally if submitting the bid electronically, then the license number must be entered in the appropriate field in the Electronic Procurement system. Failure to comply will cause the bid to be rejected.
5. It is the bidder's responsibility to visit the job site and evaluate the job before submitting a bid.
6. Job site must be clean and free of all litter and debris daily and upon completion of the contract. Passageways must be kept clean and free of material, equipment, and debris at all times. Flammable material must be removed from the job site daily because storage will not be permitted on the premises. Precautions must be exercised at all times to safeguard the welfare of JEFFERSON PARISH and the general public.

**INSTRUCTIONS FOR BIDDERS AND GENERAL CONDITIONS**

7. **PUBLIC WORKS BIDS:** All awards for public works in excess of \$5,000.00 will be reduced to a formal contract which shall be recorded at the contractor's expense with the Clerk of Court and Ex-Officio Recorder of Mortgages for the Parish of Jefferson. A price list of recordation costs may be obtained from the Clerk of Court and Ex-Officio Recorder of Mortgages for the Parish of Jefferson. All awards in excess of \$25,000.00 will require both a performance and a payment bond. Unless otherwise stated in the bid specifications, the performance bond requirements shall be 100% of the contract price. Unless otherwise stated in the bid specifications, the payment bond requirements shall be 100% of the contract price. Both bonds shall be supplied at the signing of the contract.
8. **NON-PUBLIC WORKS BIDS:** A performance bond will be required for this bid. The amount of the bond will be 100% of the contract price unless otherwise indicated in the specifications. The performance bond shall be supplied at the signing of the contract.
9. **NON-PUBLIC WORKS BIDS:** A payment bond will be required for this bid. The amount of the bond will be 100% of the contract price unless otherwise indicated in the specifications. The payment bond shall be supplied at the signing of the contract.
10. All bidders must comply with the requirements stated in the attached "Standard Insurance Requirements" sheet attached to this bid solicitation. Failure to comply with this instruction will result in bid rejection.
11. A bid bond will be required with bid submission in the amount of 5% of the total bid, unless otherwise stated in the bid specifications. Acceptable forms shall be limited to cashier's check, certified check, or surety bid bond. All sureties must be in original format (no copies). If submitting a bid online, vendors must submit an electronic bid bond through the respective online clearinghouse bond management system(s) as indicated in the electronic bid solicitation on Central Auction House. No scanned paper copies of any bid bond will be accepted as part of the electronic bid submission.
12. This is a requirements contract to be provided on an as needed basis. JEFFERSON PARISH makes no representations or warranties with regard to minimum guaranteed quantities unless otherwise stated in the bid specifications.
13. Freight charges should be included in total cost when quoting. If not quoted FOB DELIVERED, freight must be quoted as a separate item. Bid may be rejected if not quoted FOB DELIVERED or if freight charges are not indicated on bid form.
14. **PUBLIC WORKS BIDS - Completed, Signed and Properly Notarized Affidavits Required;** This applies to all solicitations for construction, alteration or demolition of public buildings or projects, in conformity with the provisions contained in LSA-RS 38:2212.9, LSA-RS 38:2212.10, LSA-RS 38:2224, and Sec 2-923.1 of the Jefferson Parish Code of Ordinances. For bidding purposes, all bidders must submit with bid submission COMPLETED, SIGNED and PROPERLY NOTARIZED Affidavits, including: Non-Conviction Affidavit, Non-Collusion Affidavit, Campaign Contribution Affidavit, Debt Disclosures Affidavit and E-Verify Affidavit. For the convenience of vendors, all affidavits have been combined into one form entitled PUBLIC WORKS BID AFFIDAVIT. This affidavit must be submitted in its original format, and without material alteration, in order to be compliant and for the bid to be considered responsive. A scanned copy of the completed, signed and properly notarized affidavit may be submitted with the bid, however, the successful bidder must submit the original affidavit in its original format and without material alteration upon contract execution. Failure to comply will result in the bid submission being rejected as non-responsive. The Parish reserves the right to award bid to the next lowest responsive and responsible bidder in this event.
15. **NON PUBLIC WORK BIDS - Completed, Signed and Properly Notarized Affidavits Required** in conformity with the provisions contained in LSA - RS 38:2224 and Sec 2-923.1 of the Jefferson Parish Code of Ordinances. For bidding purposes, all bidders must submit with bid submission COMPLETED, SIGNED and PROPERLY NOTARIZED Affidavits, including: Non-Collusion Affidavit, Debt Disclosures Affidavit and Campaign Contribution Affidavit. For the convenience of vendors, all affidavits have been combined into one form entitled NON PUBLIC WORKS BID AFFIDAVIT. This affidavit must be submitted in its original format, and without material alteration, in order to be compliant and for the bid to be considered responsive. A scanned copy of the completed, signed and properly notarized affidavit may be submitted with the bid, however, the successful bidder must submit the original affidavit in its original format and without material alteration upon contract execution. Failure to comply will result in the bid submission being rejected as non-responsive. The Parish reserves the right to award bid to the next lowest responsive and responsible bidder in this event.
16. The ensuing contract for this bid solicitation may be eligible for FEMA reimbursement and/or Federal funding/reimbursement. As such, the referenced appendix will be applicable accordingly and shall be considered a part of the bid documents. All applicable certifications must be duly completed, signed and submitted with bid submission. Failure to submit applicable certifications with bid submission will result in bid rejection.
17. For this project, the Contractor shall not pay any state or local sales or use taxes on materials and equipment which are affixed and made part of the immovable property of the project or which permanently incorporated in the project (hereinafter referred to as "applicable materials and equipment"). All purchases of applicable materials or equipment shall be made by the contractor on behalf of and as the agent of Jefferson Parish (Owner), a political subdivision of the State of Louisiana. No state and local sales and use taxes are owned on applicable materials and equipment under the provisions of Act 1029 of the 1991 Regular Session - Louisiana Revised Statute 47:301(8)(c). Owner will furnish contractor a certificate form which certifies that Owner is not required to pay such state or local sales and use taxes, and contractor shall furnish a copy of such certificate to all vendors or suppliers of the applicable materials and equipment.

It shall be the duty of every parish officer, employee, department, agency, special district, board, and commission: and the duty of every contractor, subcontractor, and licensee of the parish, and the duty of every applicant for certification of eligibility for a parish contract or program, to cooperate with the Inspector General in any investigation, audit, inspection, performance review, or hearing pursuant to JPCO 2-155.10(19). By signing this document, every corporation, partnership, or person contracting with PARISH, whether by cooperative endeavor, intergovernmental agreement, bid, proposal, application or solicitation for a parish contract, and every application for certification of eligibility for a parish contract or program, attests that it understands and will abide by all provisions of JPCO 2-155.10.

DATE: 4/28/2020

Page: 5

BID NO.: 50-00130298

**BID FORM**  
Non Public Works

**All Public Work Projects are required to use the Louisiana Uniform Public Work Bid Form**

All prices must be held firm unless an escalation provision is requested in this bid. Jefferson Parish will allow one escalation during the term of the contract, which may not exceed the U.S. Bureau of Labor Statistics National Index for all Urban Consumers, unadjusted 12 month figure. The most recently published figure issued at the time an adjustment is requested will be used. A request must be made in writing by the vendor, and the escalation will only be applied to purchases made after the request is made.

Are you requesting an escalation provision?

YES \_\_\_\_\_ NO ✓

MAXIMUM ESCALATION PERCENTAGE REQUESTED N/A %

INITIAL BID PRICES WILL REMAIN FIRM THROUGH THE DATE OF May 14, 2021

For the purposes of comparison of bids when an escalation provision is requested, Jefferson Parish will apply the maximum escalation percentage quoted by the bidder to the period to which it is applied in the bid. The initial price and the escalation will be used to calculate the total bid price. It will be assumed, for comparison of prices only, that an equal amount of material or labor is purchased each month throughout the entire contract.

**DELIVERY: FOB JEFFERSON PARISH**

INDICATE DELIVERY DATE ON EQUIPMENT AND SUPPLIES

4-6 Weeks after Approved P.O.

LOUISIANA CONTRACTOR'S LICENSE NO.: (if applicable)

N/A

**THIS SECTION MUST BE COMPLETED BY BIDDER:**

FIRM NAME: Associated Pump & Supply, LLC.

ADDRESS: 9074 Park Avenue

CITY, STATE: Houma, LA

ZIP: 70363

TELEPHONE: (985) 851-7077

FAX: (985) 876-9854

EMAIL ADDRESS: office@associatedpump.com

In the event that addenda are issued with this bid, bidders MUST acknowledge all addenda on the bid form. Bidder must acknowledge receipt of an addendum on the bid form as indicated. Failure to acknowledge any addendum on the bid form will result in bid rejection.

Acknowledge Receipt of Addenda: NUMBER: N/A

NUMBER: N/A

NUMBER: N/A

NUMBER: N/A

TOTAL PRICE OF ALL BID ITEMS: \$ 57,000.00

AUTHORIZED SIGNATURE: Paul Klingman

Paul Klingman

TITLE: President

Printed Name

SIGNING INDICATES YOU HAVE READ AND COMPLY WITH THE INSTRUCTIONS AND CONDITIONS.

NOTE: All bids should be returned with the BID NUMBER and BID OPENING DATE indicated on the outside of the envelope submitted to the Purchasing Department.

DATE: 4/28/2020

INVITATION TO BID FROM JEFFERSON PARISH - continued

Page 6

BID NO.: 50-00130298

SEALED BID

ITEM NUMBER	QUANTITY	U/M	DESCRIPTION OF ARTICLES	UNIT PRICE QUOTED	TOTALS
1	2.00	EA	<p>ONE TIME PURCHASE:</p> <p>0001 - Trash Pump, 6 inch self priming, trailer mount with DOT trailer lights package, driven by an Isuzu model 4LE2T, tier 4 diesel engine, passes 3 inch solids</p> <p>Part no. 6HT-DIST-4LE2T</p> <p>Please Note: One pump is for Eastbank Sewerage Lines Division.</p> <p>One pump is for Westbank Sewerage Lines Division.</p> <p>As per attached specifications</p>	\$28,500.00	\$57,000.00

## CORPORATE RESOLUTION

EXCERPT FROM MINUTES OF MEETING OF THE BOARD OF DIRECTORS OF  
Associated Pump & Supply, LLC.  
INCORPORATED.

AT THE MEETING OF DIRECTORS OF Associated Pump & Supply, LLC.  
INCORPORATED, DULY NOTICED AND HELD ON May 13, 2020,  
A QUORUM BEING THERE PRESENT, ON MOTION DULY MADE AND SECONDED. IT  
WAS:

RESOLVED THAT Louis Klingman, BE AND IS HEREBY  
APPOINTED, CONSTITUTED AND DESIGNATED AS AGENT AND ATTORNEY-IN-  
FACT OF THE CORPORATION WITH FULL POWER AND AUTHORITY TO ACT ON  
BEHALF OF THIS CORPORATION IN ALL NEGOTIATIONS, BIDDING, CONCERNS  
AND TRANSACTIONS WITH THE PARISH OF JEFFERSON OR ANY OF ITS AGENCIES,  
DEPARTMENTS, EMPLOYEES OR AGENTS, INCLUDING BUT NOT LIMITED TO, THE  
EXECUTION OF ALL BIDS, PAPERS, DOCUMENTS, AFFIDAVITS, BONDS, SURETIES,  
CONTRACTS AND ACTS AND TO RECEIVE ALL PURCHASE ORDERS AND NOTICES  
ISSUED PURSUANT TO THE PROVISIONS OF ANY SUCH BID OR CONTRACT, THIS  
CORPORATION HEREBY RATIFYING, APPROVING, CONFIRMING, AND ACCEPTING  
EACH AND EVERY SUCH ACT PERFORMED BY SAID AGENT AND ATTORNEY-IN-  
FACT.

I HEREBY CERTIFY THE FOREGOING TO BE  
A TRUE AND CORRECT COPY OF AN  
EXCERPT OF THE MINUTES OF THE ABOVE  
DATED MEETING OF THE BOARD OF  
DIRECTORS OF SAID CORPORATION, AND  
THE SAME HAS NOT BEEN REVOKED OR  
RESCINDED.

Louis Klingman  
SECRETARY-TREASURER

5-13-2020  
DATE

## **Non-Public Works Bid Affidavit Instructions**

- **Affidavit is supplied as a courtesy to Affiants, but it is the responsibility of the affiant to insure the affidavit they submit to Jefferson Parish complies, in both form and content, with federal, state and parish laws.**
- **Affidavit must be signed by an authorized representative of the entity or the affidavit will not be accepted.**
- **Affidavit must be notarized or the affidavit will not be accepted.**
- **Notary must sign name, print name, and include bar/notary number, or the affidavit will not be accepted.**
- **Affiant MUST select either A or B when required or the affidavit will not be accepted.**
- **Affiants who select choice A must include an attachment or the affidavit will not be accepted.**
- **If both choice A and B are selected, the affidavit will not be accepted.**
- **Affidavit marked N/A will not be accepted.**
- **It is the responsibility of the Affiant to submit a new affidavit if any additional campaign contributions are made after the affidavit is executed but prior to the time the council acts on the matter.**

*Instruction sheet may be omitted when submitting the affidavit*

**Non-Public Works Bid**

**AFFIDAVIT**

**STATE OF** Louisiana

**PARISH/COUNTY OF** Terrebonne

BEFORE ME, the undersigned authority, personally came and appeared: Paul  
Klingman, (Affiant) who after being by me duly sworn, deposed and said that  
he/she is the fully authorized President of Associated Pump & Supply, LLC. (Entity),  
the party who submitted a bid in response to Bid Number 50-130298, to the Parish of  
Jefferson.

Affiant further said:

Campaign Contribution Disclosures

**(Choose A or B, if option A is indicated please include the required attachment):**

**Choice A** \_\_\_\_\_ Attached hereto is a list of all campaign contributions, including the date and amount of each contribution, made to current or former elected officials of the Parish of Jefferson by Entity, Affiant, and/or officers, directors and owners, including employees, owning 25% or more of the Entity during the two-year period immediately preceding the date of this affidavit or the current term of the elected official, whichever is greater. Further, Entity, Affiant, and/or Entity Owners have not made any contributions to or in support of current or former members of the Jefferson Parish Council or the Jefferson Parish President through or in the name of another person or legal entity, either directly or indirectly.

**Choice B** X there are **NO** campaign contributions made which would require disclosure under Choice A of this section.

Debt Disclosures

**(Choose A or B, if option A is indicated please include the required attachment):**

Choice A \_\_\_\_\_ Attached hereto is a list of all debts owed by the affiant to any elected or appointed official of the Parish of Jefferson, and any and all debts owed by any elected or appointed official of the Parish to the Affiant.

Choice B   X   There are NO debts which would require disclosure under Choice A of this section.

Affiant further said:

That Affiant has employed no person, corporation, firm, association, or other organization, either directly or indirectly, to secure the public contract under which he received payment, other than persons regularly employed by the Affiant whose services in connection with the construction, alteration or demolition of the public building or project or in securing the public contract were in the regular course of their duties for Affiant; and

*[The remainder of this page is intentionally left blank.]*

That no part of the contract price received by Affiant was paid or will be paid to any person, corporation, firm, association, or other organization for soliciting the contract, other than the payment of their normal compensation to persons regularly employed by the Affiant whose services in connection with the construction, alteration or demolition of the public building or project were in the regular course of their duties for Affiant.

Paul Klingman  
Signature of Affiant

Paul Klingman  
Printed Name of Affiant

SWORN AND SUBSCRIBED TO BEFORE ME  
ON THE 13th DAY OF May, 2020.

Thelma G. Babin  
Notary Public



Thelma G. Babin  
Notary Public ID #9128  
Terrebonne Parish, LA  
Commission is for life.

Thelma G Babin #9128  
Printed Name of Notary

# 9128  
Notary/Bar Roll Number

My commission expires Lifetime!

## Louisiana Secretary of State

### R. Kyle Ardoin

#### SEARCH FOR LOUISIANA NOTARIES

A practicing notary in a parish may notarize in reciprocal parishes without additional bonding or examination.

You can also download information about all notaries on file. For more information, see Notary Bulk Data.

[Print](#)

#### Notary Search - Detail

**Name:** MS. THELMA G. BABIN  
**Address:** 10135 EAST PARK AVE.  
HOUMA, LA 70363  
**Phone:** (985) 580-2020  
**Phone 2:** (985) 232-2599  
**Notary ID Number:** 9128  
**Parish:** TERREBONNE with authority in the following parishes:  
ASSUMPTION, LAFOURCHE, ST. MARY  
**Agency:** N/A  
**Notary Type:** Non Attorney  
**Status:** Active  
**Commission Date:** 02/19/1987  
**Oath Date:** 02/04/1987  
**Surety Expiration Date:** 12/29/2021  
**Annual Report Current:** Yes

[Back to Search Results](#)[New Search](#)



# JEFFERSON PARISH

## DEPARTMENT OF PURCHASING

CYNTHIA LEE SHENG  
PARISH PRESIDENT

RENNY SIMNO  
DIRECTOR

January 2020

### **Changes to Jefferson Parish Bidding Information**

The Jefferson Parish Purchasing Department would like to make vendors aware of the following changes:

**Probable Construction Cost:** Per Jefferson Parish Administrative Policy, the probable construction cost is not revealed in the Jefferson Parish Bidding Documents. Jefferson Parish Administrative Policy has changed and a range of the probable construction cost will be stated in the Jefferson Parish bidding document, entitled Important Notice to All Bidders – Bid Requirements. Per Louisiana Public Bid Law, the probable construction cost will be read at the bid opening.

**Insurance Requirement:** **All bidders** must provide proof of valid insurance in the required amounts as stated in the Standard Insurance Requirements for bidding purposes. Failure to provide the proof of valid insurance in all of the required coverage amounts will result in bid rejection.

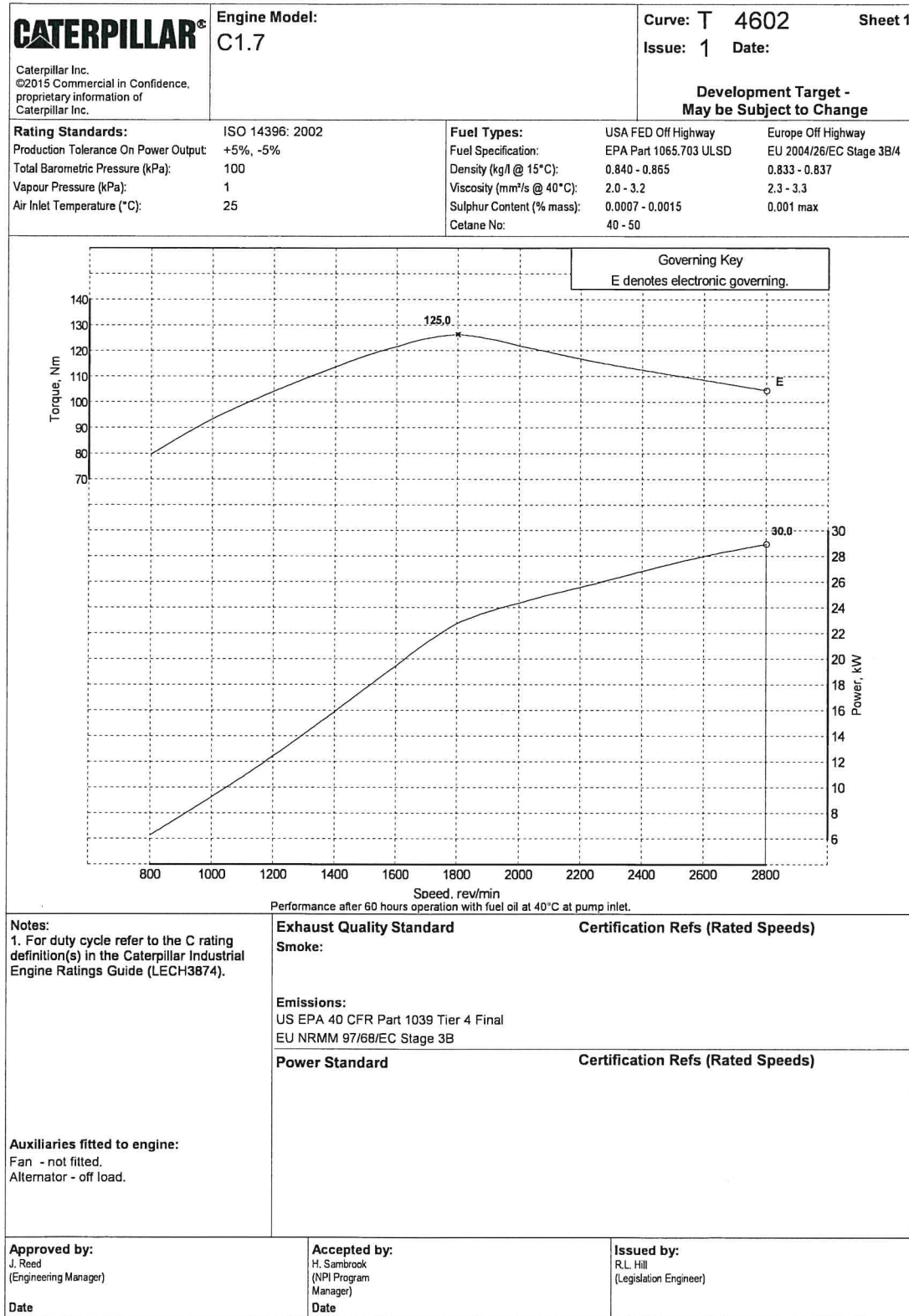
GENERAL GOVERNMENT BLDG. – 200 DERBIGNY ST., SUITE 4400, GRETN, LA 70053  
OFFICE 504.364.2678

JOSEPH S. YENNI BLDG. – 1221 ELMWOOD PARK BLVD., SUITE 404, JEFFERSON, LA 70123  
OFFICE 504.364.2678

EMAIL: [PURCHASING@JEFFPARISH.NET](mailto:PURCHASING@JEFFPARISH.NET) WEBSITE: [WWW.JEFFPARISH.NET](http://WWW.JEFFPARISH.NET)

## Power curves

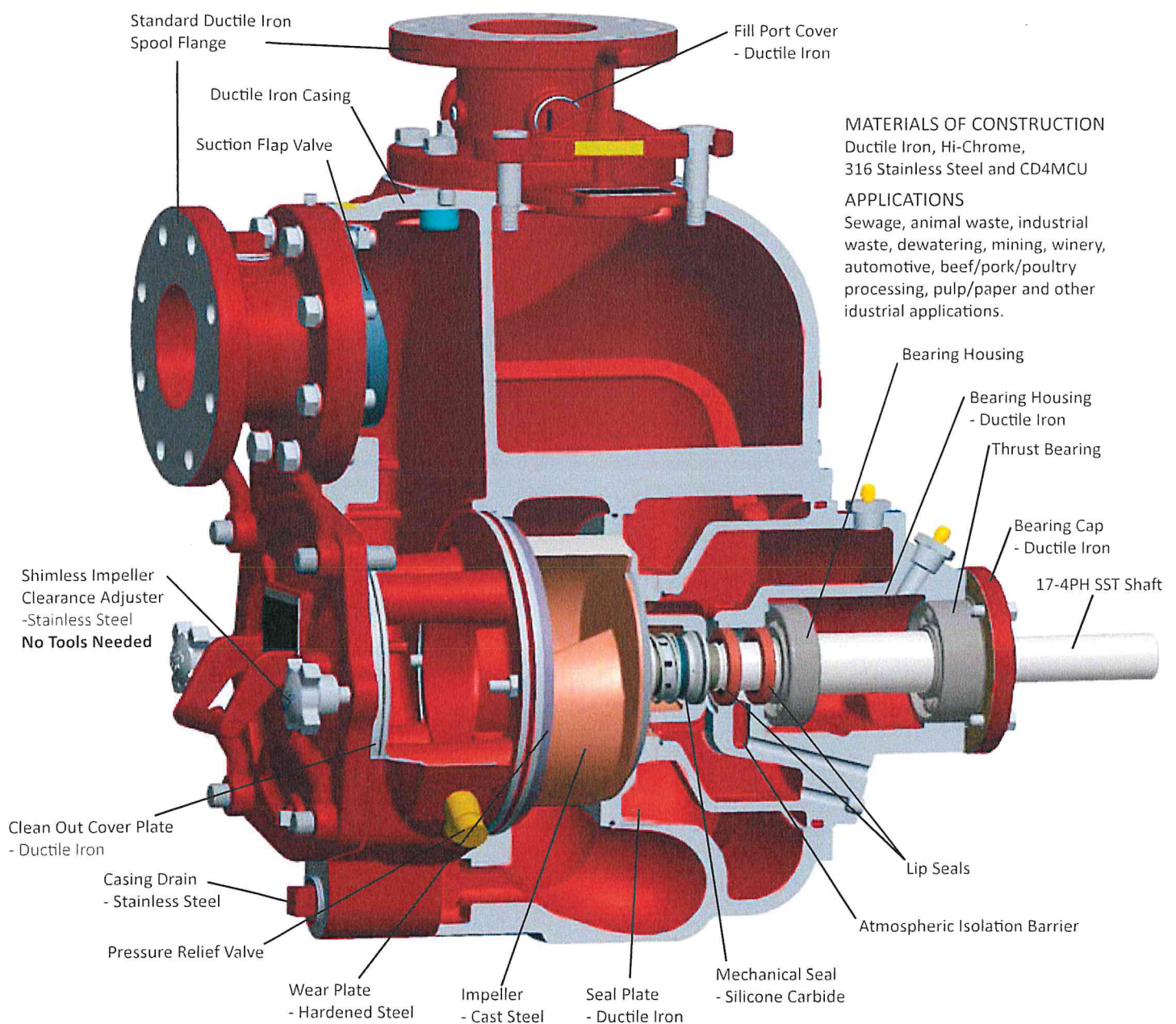
## C1.7 (DIT) - T4602



# GLOBAL PUMP®

A MERSINO COMPANY

## GLOBAL SELF-PRIMER





**SMITHERS**  
QUALITY ASSESSMENTS

## CERTIFICATE OF APPROVAL

This is to Certify that the Quality Management System of:

**Global Pump Company**  
10162 East Coldwater Road  
Davison, MI 48423

has been assessed and approved by Smithers Quality Assessments, Inc., to  
the following quality management system standards and requirements:

### ISO 9001:2015 with Design

The Quality Management System is Applicable to:

The fabrication and manufacturing of specialty products for a variety of industries.

Approval  
Certificate Number: 15.243.1


Original Approval: August 31, 2015

Current Certificate: August 23, 2018

Certificate Expires: August 22, 2021



*The use of the accreditation mark indicates  
accreditation in respect of those activities  
covered by the above certificate number.*

  
on behalf of SQA - J. Michael Hochschwender, CEO

The approval is subject to the company maintaining its system to the required standards which will be monitored by  
Smithers Quality Assessments, Inc., 121 S. Main St. Suite 300, Akron, Ohio 44308, USA





10162 E Coldwater Road  
Davison, MI 48423  
O 810.653.4828  
F 810.658.0632

## **ONE YEAR WARRANTY**

### **ONE-YEAR WARRANTY FOR AUTOMATICALLY PRIMING AND SELF-PRIMING PUMPS**

Global Pump Co., L.L.C. warrants the above series of pumps to be free from defects in the workmanship and materials for a period of twelve (12) months from the date of shipment to original end customer OR 2000 hours of use.

Start-up reports and electrical system schematics may be required to support warranty claims. Warranty effective only if Company's supplied or authorized control panels are used.

The Company's sole obligation under this warranty shall be to make repairs and replace parts when necessary on products that have been returned to it or to an authorized service facility and found to be defective by the Company. The Company shall not be liable for any special, indirect, or consequential damages of any kind. Major components not manufactured by the Company are covered by the original manufacturer's warranty in lieu of this warranty. The Company will not be held responsible for travel expenses, rented equipment, outside contractor fees, or unauthorized repair shop expenses. The Company neither assumes nor authorizes any person or other company to assume for it, any other obligation in connection with the sale of its equipment. Any enlargement or modification of this warranty by a Representative or other Sales Agent is their exclusive responsibility. Transportation charges shall be borne by the Buyer. Returns must have prior written authorization from the Company.

This warranty shall extend only to the original owner, and shall not apply to any products that have been repaired or altered without the Company's consent or have been subject to misuse, accident or neglect.

NO OTHER WARRANTIES EXPRESSED OR IMPLIED, INCLUDING IMPLIED WARRANTIES OF MERCHANTABILITY AND FITNESS FOR A PARTICULAR PURPOSE, WILL APPLY.

State of  
Louisiana  
Secretary of  
State



**COMMERCIAL DIVISION**  
**225.925.4704**

Fax Numbers  
225.932.5317 (Admin. Services)  
225.932.5314 (Corporations)  
225.932.5318 (UCC)

Name	Type	City	Status
ASSOCIATED PUMP & SUPPLY, LLC	Limited Liability Company	HOUMA	Active

**Previous Names**

ASSOCIATED PUMP & SUPPLY, INC. (Changed: 12/15/2011)

**Business:** ASSOCIATED PUMP & SUPPLY, LLC

**Charter Number:** 34346784K

**Registration Date:** 1/2/1990

**Domicile Address**

9074 PARK AVENUE

HOUMA, LA 70363

**Mailing Address**

9074 PARK AVENUE

HOUMA, LA 70363

**Status**

**Status:** Active

**Annual Report Status:** In Good Standing

**File Date:** 1/2/1990

**Last Report Filed:** 12/10/2019

**Type:** Limited Liability Company

**Registered Agent(s)**

**Agent:** LOUIS KLINGMAN  
**Address 1:** 201 GLENHILL DRIVE  
**City, State, Zip:** HOUMA, LA 70363  
**Appointment Date:** 1/2/1990

**Officer(s)**

Additional Officers: No

**Officer:** LOUIS KLINGMAN  
**Title:** Manager  
**Address 1:** 201 GLENHILL DRIVE  
**City, State, Zip:** HOUMA, LA 70363

**Officer:** PAUL KLINGMAN  
**Title:** Manager  
**Address 1:** 211 BELLINGRATH DRIVE  
**City, State, Zip:** HOUMA, LA 70360

**Amendments on File (2)**

Description	Date
Conversion	12/15/2011
Name Change	12/15/2011

Print



ASSOPUM-01

JMYHAND

## CERTIFICATE OF LIABILITY INSURANCE

DATE (MM/DD/YYYY)

5/13/2020

THIS CERTIFICATE IS ISSUED AS A MATTER OF INFORMATION ONLY AND CONFERS NO RIGHTS UPON THE CERTIFICATE HOLDER. THIS CERTIFICATE DOES NOT AFFIRMATIVELY OR NEGATIVELY AMEND, EXTEND OR ALTER THE COVERAGE AFFORDED BY THE POLICIES BELOW. THIS CERTIFICATE OF INSURANCE DOES NOT CONSTITUTE A CONTRACT BETWEEN THE ISSUING INSURER(S), AUTHORIZED REPRESENTATIVE OR PRODUCER, AND THE CERTIFICATE HOLDER.

**IMPORTANT:** If the certificate holder is an ADDITIONAL INSURED, the policy(ies) must have ADDITIONAL INSURED provisions or be endorsed. If SUBROGATION IS WAIVED, subject to the terms and conditions of the policy, certain policies may require an endorsement. A statement on this certificate does not confer rights to the certificate holder in lieu of such endorsement(s).

<b>PRODUCER</b> Paul's Insurance Services, LLC 321 Bayou Gardens Blvd. Houma, LA 70364	<b>CONTACT NAME:</b> Jena Myhand	
	<b>PHONE (A/C, No, Ext):</b> (985) 868-0715	<b>FAX (A/C, No):</b>
<b>INSURED</b>  Associated Pump & Supply, LLC 9074 Park Ave Houma, LA 70363	<b>E-MAIL ADDRESS:</b> jmyhand@paulsagency.com	
	<b>INSURER(S) AFFORDING COVERAGE</b>	
	<b>INSURER A:</b> Crum & Forster Specialty Insurance Company	<b>NAIC #</b> 44520
	<b>INSURER B:</b> Houston Specialty Insurance Company	12936
	<b>INSURER C:</b> LUBA Indemnity Insurance Company	
	<b>INSURER D:</b>	
<b>INSURER E:</b>		
<b>INSURER F:</b>		

## COVERAGES

## CERTIFICATE NUMBER:

## REVISION NUMBER:

THIS IS TO CERTIFY THAT THE POLICIES OF INSURANCE LISTED BELOW HAVE BEEN ISSUED TO THE INSURED NAMED ABOVE FOR THE POLICY PERIOD INDICATED. NOTWITHSTANDING ANY REQUIREMENT, TERM OR CONDITION OF ANY CONTRACT OR OTHER DOCUMENT WITH RESPECT TO WHICH THIS CERTIFICATE MAY BE ISSUED OR MAY PERTAIN, THE INSURANCE AFFORDED BY THE POLICIES DESCRIBED HEREIN IS SUBJECT TO ALL THE TERMS, EXCLUSIONS AND CONDITIONS OF SUCH POLICIES. LIMITS SHOWN MAY HAVE BEEN REDUCED BY PAID CLAIMS.

INSR LTR	TYPE OF INSURANCE	ADDL INSD	SUBR WVD	POLICY NUMBER	POLICY EFF (MM/DD/YYYY)	POLICY EXP (MM/DD/YYYY)	LIMITS
A	<input checked="" type="checkbox"/> <b>COMMERCIAL GENERAL LIABILITY</b> <input type="checkbox"/> CLAIMS-MADE <input checked="" type="checkbox"/> OCCUR  GEN'L AGGREGATE LIMIT APPLIES PER: <input type="checkbox"/> POLICY <input checked="" type="checkbox"/> PROJECT <input type="checkbox"/> LOC OTHER:			EPK130036	3/6/2020	3/6/2021	EACH OCCURRENCE \$ 1,000,000 DAMAGE TO RENTED PREMISES (Ea occurrence) \$ 50,000 MED EXP (Any one person) \$ 5,000 PERSONAL & ADV INJURY \$ 1,000,000 GENERAL AGGREGATE \$ 2,000,000 PRODUCTS - COMP/OP AGG \$ 2,000,000 \$
B	<b>AUTOMOBILE LIABILITY</b> <input checked="" type="checkbox"/> ANY AUTO OWNED AUTOS ONLY <input type="checkbox"/> SCHEDULED AUTOS <input type="checkbox"/> HIRED AUTOS ONLY <input type="checkbox"/> NON-OWNED AUTOS ONLY			HSLR18-04482-05	3/6/2020	3/6/2021	COMBINED SINGLE LIMIT (Ea accident) \$ 1,000,000 BODILY INJURY (Per person) \$ BODILY INJURY (Per accident) \$ PROPERTY DAMAGE (Per accident) \$ \$
A	<input checked="" type="checkbox"/> <b>UMBRELLA LIAB</b> <input checked="" type="checkbox"/> OCCUR <input type="checkbox"/> EXCESS LIAB <input type="checkbox"/> CLAIMS-MADE DED RETENTION \$			EFX114568	3/6/2020	3/6/2021	EACH OCCURRENCE \$ 1,000,000 AGGREGATE \$ 1,000,000 \$
C	<b>WORKERS COMPENSATION AND EMPLOYERS' LIABILITY</b> ANY PROPRIETOR/PARTNER/EXECUTIVE OFFICER/MEMBER EXCLUDED? (Mandatory in NH) <input checked="" type="checkbox"/> Y/N <input type="checkbox"/> N/A If yes, describe under DESCRIPTION OF OPERATIONS below			027000300273120	3/6/2020	3/6/2021	<input checked="" type="checkbox"/> PER STATUTE <input type="checkbox"/> OTH-ER E.L. EACH ACCIDENT \$ 1,000,000 E.L. DISEASE - EA EMPLOYEE \$ 1,000,000 E.L. DISEASE - POLICY LIMIT \$ 1,000,000

DESCRIPTION OF OPERATIONS / LOCATIONS / VEHICLES (ACORD 101, Additional Remarks Schedule, may be attached if more space is required)

General Liability: Blanket Waiver of Subrogation and Blanket Additional Insured where required by written contract. "Action Over" Claims

Commercial Auto: Blanket Waiver of Subrogation and Blanket Additional Insured where required by written contract.

Worker's Comp: Blanket Waiver of Subrogation where required by written contract.

## CERTIFICATE HOLDER

## CANCELLATION

Jefferson Parish  
P.O. Box 9  
Gretna, LA 70053

SHOULD ANY OF THE ABOVE DESCRIBED POLICIES BE CANCELLED BEFORE THE EXPIRATION DATE THEREOF, NOTICE WILL BE DELIVERED IN ACCORDANCE WITH THE POLICY PROVISIONS.

AUTHORIZED REPRESENTATIVE

Rance E. Dutoit