

DATE: 6/20/2017

Page: 5

BID NO.: 50-00119955

**BID FORM**  
Non Public Works

All Public Work Projects are required to use the Louisiana Uniform Public Work Bid Form

All prices must be held firm unless an escalation provision is requested in this bid. Jefferson Parish will allow one escalation during the term of the contract, which may not exceed the U.S. Bureau of Labor Statistics National Index for all Urban Consumers, unadjusted 12 month figure. The most recently published figure issued at the time an adjustment is requested will be used. A request must be made in writing by the vendor, and the escalation will only be applied to purchases made after the request is made.

Are you requesting an escalation provision?

YES \_\_\_\_\_ NO ☒

MAXIMUM ESCALATION PERCENTAGE REQUESTED \_\_\_\_\_ %

INITIAL BID PRICES WILL REMAIN FIRM THROUGH THE DATE OF August 31, 2017

For the purposes of comparison of bids when an escalation provision is requested, Jefferson Parish will apply the maximum escalation percentage quoted by the bidder to the period to which it is applied in the bid. The initial price and the escalation will be used to calculate the total bid price. It will be assumed, for comparison of prices only, that an equal amount of material or labor is purchased each month throughout the entire contract.

**DELIVERY: FOB JEFFERSON PARISH**

INDICATE DELIVERY DATE ON EQUIPMENT AND SUPPLIES

10-12 weeks ARO

LOUISIANA CONTRACTOR'S LICENSE NO.: (if applicable) \_\_\_\_\_

**THIS SECTION MUST BE COMPLETED BY BIDDER:**

FIRM NAME: Howard Industries dba: AtoZ Muni-DOT Company

ADDRESS: 3648 Vann Road Ste. 100

CITY, STATE: Birmingham, AL ZIP: 35235

TELEPHONE: (205) 261-8660 FAX: (205) 248-6616

EMAIL ADDRESS: ccowart@atozmuni-dotco.com

In the event that addenda are issued with this bid, bidders MUST acknowledge all addenda on the bid form. Bidder must acknowledge receipt of an addendum on the bid form as indicated. Failure to acknowledge any addendum on the bid form will result in bid rejection.

Acknowledge Receipt of Addenda: NUMBER: \_\_\_\_\_

NUMBER: \_\_\_\_\_

NUMBER: \_\_\_\_\_

NUMBER: \_\_\_\_\_

**REJECTED**  
**ALL BID REQUIREMENTS NOT MET**

TOTAL PRICE OF ALL BID ITEMS: \$ 40,567

AUTHORIZED SIGNATURE: Charles Cowart

TITLE: Sales Manager

Charles Cowart

Printed Name

SIGNING INDICATES YOU HAVE READ AND COMPLY WITH THE INSTRUCTIONS AND CONDITIONS.

NOTE: All bids should be returned with the BID NUMBER and BID OPENING DATE indicated on the outside of the envelope submitted to the Purchasing Department.

Non-Public Works Bid

AFFIDAVIT

STATE OF Louisiana

PARISH/COUNTY OF Jefferson

BEFORE ME, the undersigned authority, personally came and appeared: \_\_\_\_\_  
Charles Cowart, (Affiant) who after being by me duly sworn, deposed and said that  
 he/she is the fully authorized \_\_\_\_\_ of AtoZ Muni-DOT Co. (Entity),  
 the party who submitted a bid in response to Bid Number 50-00119955, to the Parish of  
 Jefferson.

Affiant further said:

Campaign Contribution Disclosures

**(Choose A or B, if option A is indicated please include the required attachment):**

Choice A \_\_\_\_\_ Attached hereto is a list of all campaign contributions, including the date and amount of each contribution, made to current or former elected officials of the Parish of Jefferson by Entity, Affiant, and/or officers, directors and owners, including employees, owning 25% or more of the Entity during the two-year period immediately preceding the date of this affidavit or the current term of the elected official, whichever is greater. Further, Entity, Affiant, and/or Entity Owners have not made any contributions to or in support of current or former members of the Jefferson Parish Council or the Jefferson Parish President through or in the name of another person or legal entity, either directly or indirectly.

Choice B ✓ there are **NO** campaign contributions made which would require disclosure under Choice A of this section.

## INVITATION TO BID FROM JEFFERSON PARISH - continued

BID NO.: 50-00119955

SEALED BID

ITEM NUMBER	QUANTITY	U/M	DESCRIPTION OF ARTICLES	UNIT PRICE QUOTED	TOTALS
1	5.00	EA	A ONE-TIME PURCHASE OF LIGHT POLES AND ACCESSORIES FOR THE JEFFERSON PARISH DEPARTMENT OF PARKS AND RECREATION		
			0010 - 80 foot Shakespeare fiberglass light poles  Model Number SL70N8E1XX or equal  To be delivered to: Waggaman Playground 516 Dandelion St Waggaman, LA 70094	5650	28,250
2	1.00	EA	0020 - 80 foot Shakespeare fiberglass light pole  Model Number SL70N8E1XX or equal  To be delivered to: Harvey Playground 2240 Alamo St, Harvey, LA 70058	5651	5651
3	12.00	EA	0030 - 8 foot Shakespeare fiberglass arms  Model Number OPXA-8I-BZ or equal  To be delivered to: Waggaman Playground 516 Dandelion St Waggaman, LA 70094	390.00	4680
4	3.00	EA	0040 - 8 foot Shakespeare fiberglass arms  Model Number OPXA-8I-BZ or equal  To be delivered to: Harvey Playground 2240 Alamo St Harvey, LA 70058	390.00	1170
5	3.00	EA	0050 - 4 foot Shakespeare fiberglass arms Model Number OTXA-4I-BZ or equal  To be delivered to: Waggaman Playground 516 Dandelion St Waggaman, LA 70094	272.00	816



### CORPORATE RESOLUTION

A meeting of the Board of Directors of Howard Industries, Inc.,  
a corporation organized under the laws of the State of Mississippi and domiciled in  
Laurel, Mississippi was held this 19th day of November, 2014 and was attended by a  
quorum of the members of the Board of Directors.

The following resolution was offered, duly seconded and after discussion was unanimously  
adopted by said quorum:

**BE IT RESOLVED**, that Charles Cowart is hereby authorized  
to submit proposals and execute agreements on behalf of this corporation with the City of Baton Rouge, and  
Parish of East Baton Rouge.

**BE IT FURTHER RESOLVED**, that said authorization and appointment shall remain in full force and  
effect, unless revoked by resolution of this Board of Directors and that said revocation will not take effect until  
the Purchasing Director of the Parish of East Baton Rouge, shall have been furnished a copy of said  
resolution, duly certified.

I, Steven L. Howard, hereby certify that I am the Secretary of Howard Industries, Inc.  
a corporation created under the laws of the State of Mississippi domiciled in Laurel, Mississippi  
that the foregoing is a true and exact copy of a resolution adopted by a quorum of the Board of  
Directors of said corporation at a meeting legally called and held on the 19th day of November  
2014, as said resolution appears of record in the Official Minutes of the Board of Directors in my  
possession. This 18th day of December, 2014

  
\_\_\_\_\_  
SECRETARY

Debt Disclosures

**(Choose A or B, if option A is indicated please include the required attachment):**

**Choice A** \_\_\_\_\_ Attached hereto is a list of all debts owed by the affiant to any elected or appointed official of the Parish of Jefferson, and any and all debts owed by any elected or appointed official of the Parish to the Affiant.

**Choice B** ☒ There are **NO** debts which would require disclosure under Choice A of this section.

Affiant further said:

That Affiant has employed no person, corporation, firm, association, or other organization, either directly or indirectly, to secure the public contract under which he received payment, other than persons regularly employed by the Affiant whose services in connection with the construction, alteration or demolition of the public building or project or in securing the public contract were in the regular course of their duties for Affiant; and

*[The remainder of this page is intentionally left blank.]*

That no part of the contract price received by Affiant was paid or will be paid to any person, corporation, firm, association, or other organization for soliciting the contract, other than the payment of their normal compensation to persons regularly employed by the Affiant whose services in connection with the construction, alteration or demolition of the public building or project were in the regular course of their duties for Affiant.

Charles Cowart

Signature of Affiant

Charles Cowart

Printed Name of Affiant

SWORN AND SUBSCRIBED TO BEFORE ME

ON THE 10<sup>th</sup> DAY OF July, 2017.

Melissa A. Miley

Notary Public

Melissa A. Miley

Printed Name of Notary

\_\_\_\_\_  
Notary/Bar Roll Number

My commission expires At Death.

**MELISSA A. MILEY  
NOTARY PUBLIC LSBA# 28683  
MY COMMISSION IS FOR LIFE**

 Print

## Notary Search - Detail

**Name:** MS. MELISSA MILEY  
**Address:** 3211 MONTERREY DR.  
BATON ROUGE, LA 70814

**Phone:** (225) 926-9415  
**Phone 2:** (225) 927-1902

**Notary ID Number:** 68822  
**Parish:** EAST BATON ROUGE with STATEWIDE JURISDICTION  
**Agency:** N/A  
**Notary Type:** Attorney  
**Bar Roll #:** 28683

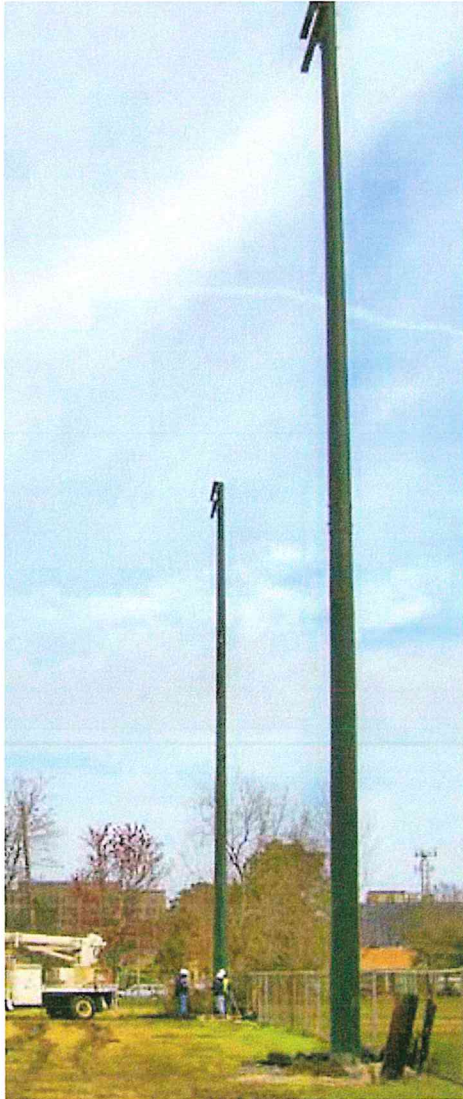
**Status:** Active

**Commission Date:** 11/04/2003  
**Oath Date:** 10/29/2003  
**Surety Expiration Date:** Not Required  
**Annual Report Current:** Not Applicable



# SportsLighting Poles Series by EPA and Wind Zone Requirements

Maximum height is 90' unless otherwise stated. EPA is in square feet.



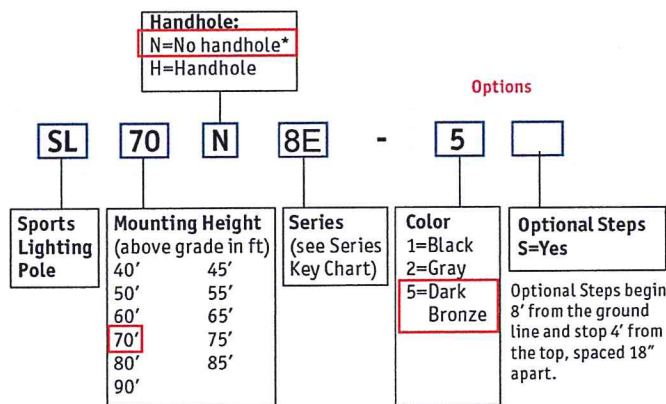
## WITHOUT HANDHOLE

	90 MPH	100 MPH	110 MPH	120 MPH	130 MPH
20 EPA	<b>2C</b>	<b>3C</b>	<b>4C</b>	<b>5C</b>	<b>6C</b>
30 EPA	<b>2E</b>	<b>3E</b>	<b>4E</b>	<b>5E</b>	<b>6E</b> (85' max.)
40 EPA	<b>2G</b>	<b>3G</b>	<b>4G</b>	<b>5G</b> (85' max.)	<b>6G</b> (80' max.)
50 EPA	<b>2J</b>	<b>3J</b>	<b>4J</b>	<b>5J</b> (80' max.)	<b>6J</b> (75' max.)
60 EPA	<b>2L</b>	<b>3L</b>	<b>4L</b> (80' max.)	<b>5L</b> (75' max.)	<b>6L</b> (75' max.)
70 EPA	<b>2N</b>	<b>3N</b> (85' max.)	<b>4N</b> (80' max.)	<b>5N</b> (75' max.)	<b>6N</b> (75' max.)
80 EPA	<b>2Q</b>	<b>3Q</b> (80' max.)	<b>4Q</b> (75' max.)	<b>5Q</b> (70' max.)	<b>6Q</b> (65' max.)
90 EPA	<b>2R</b> (85' max.)	<b>3R</b> (80' max.)	<b>4R</b> (70' max.)	<b>5R</b> (65' max.)	<b>6R</b> (60' max.)
100 EPA	<b>2T</b> (80' max.)	<b>3T</b> (75' max.)	<b>4T</b> (70' max.)	<b>5T</b> (60' max.)	<b>6T</b> (55' max.)
110 EPA	<b>2V</b> (80' max.)	<b>3V</b> (75' max.)	<b>4V</b> (65' max.)	<b>5V</b> (60' max.)	<b>6V</b> (50' max.)
120 EPA	<b>2X</b> (75' max.)	<b>3X</b> (70' max.)	<b>4X</b> (60' max.)	<b>5X</b> (55' max.)	<b>6X</b> (50' max.)

## WITH HANDHOLE

	90 MPH	100 MPH	110 MPH	120 MPH	130 MPH
20 EPA	<b>2C</b>	<b>3C</b>	<b>4C</b> (85' max.)	<b>5C</b> (75' max.)	<b>6C</b> (70' max.)
30 EPA	<b>2E</b>	<b>3E</b> (80' max.)	<b>4E</b> (75' max.)	<b>5E</b> (70' max.)	<b>6E</b> (65' max.)
40 EPA	<b>2G</b> (80' max.)	<b>3G</b> (75' max.)	<b>4G</b> (70' max.)	<b>5G</b> (60' max.)	<b>6G</b> (55' max.)
50 EPA	<b>2J</b> (75' max.)	<b>3J</b> (70' max.)	<b>4J</b> (65' max.)	<b>5J</b> (55' max.)	<b>6J</b> (50' max.)
60 EPA	<b>2L</b> (75' max.)	<b>3L</b> (65' max.)	<b>4L</b> (55' max.)	<b>5L</b> (50' max.)	<b>6L</b> (45' max.)
70 EPA	<b>2N</b> (70' max.)	<b>3N</b> (60' max.)	<b>4N</b> (50' max.)	<b>5N</b> (45' max.)	<b>6N</b> (40' max.)
80 EPA	<b>2Q</b> (65' max.)	<b>3Q</b> (55' max.)	<b>4Q</b> (50' max.)	<b>5Q</b> (40' max.)	
90 EPA	<b>2R</b> (60' max.)	<b>3R</b> (50' max.)	<b>4R</b> (45' max.)		
100 EPA	<b>2T</b> (55' max.)	<b>3T</b> (50' max.)			
110 EPA	<b>2V</b> (55' max.)	<b>3V</b> (45' max.)			
120 EPA	<b>2X</b> (50' max.)				

## SportsLighting Poles Order Logic



\*Recommended. Poles without handholes can support higher loads in stronger wind zones.

## Key to Series Nomenclature

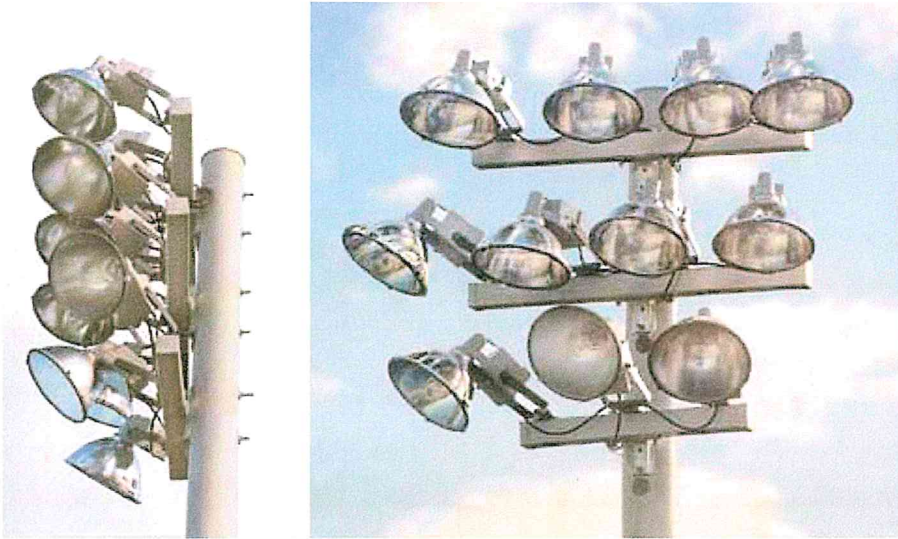
WIND ZONES	EPA RATINGS
2 = 90 MPH	C = 20 EPA
3 = 100 MPH	<b>E = 30 EPA</b>
4 = 110 MPH	G = 40 EPA
5 = 120 MPH	J = 50 EPA
6 = 130 MPH	L = 60 EPA
9 = OTHER	N = 70 EPA
(contact factory for Wind Zones above 130 MPH)	Q = 80 EPA
	R = 90 EPA
	T = 100 EPA
	V = 110 EPA
	X = 120 EPA



**Shakespeare**  
A valmont BRAND

19845 U.S. Highway 76, Newberry, SC 29108  
803-276-5504 · 800-800-9008 · Fax: 803-276-8940  
www.skp-cs.com





## SportsLighting Cross Arms

SportsLighting  
Cross Arm

OPXA

8I

5

Color  
1=Black  
2=Gray  
5=Dark  
Bronze

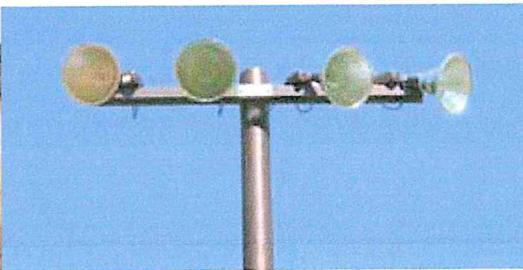
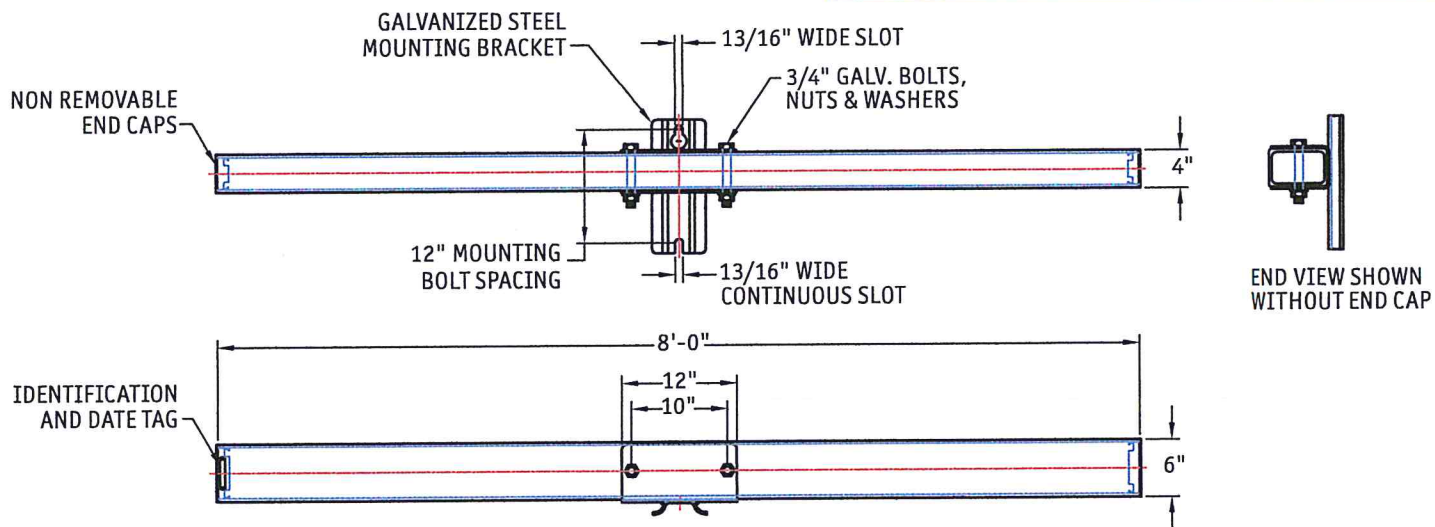
### Cross Arm E.P.A.

Length	EPA
2'	1.2
4'	2.4
6'	3.6
8'	4.8
10'	6.0
12'	7.2

Series	Length	Fixtures*
2I	2'	1
4I	4'	2
6I	6'	3
8I	8'	4
10I	10'	5
12I	12'	6

\*with 22" reflector

Luminaire arrays are field installed.





**Request for Taxpayer  
Identification Number and Certification**

Give Form to the  
requester. Do not  
send to the IRS.

1 Name (as shown on your income tax return). Name is required on this line; do not leave this line blank.  
**HOWARD INDUSTRIES, INC.**

2 Business name/disregarded entity name, if different from above  
**DBA: HOWARD TECHNOLOGY SOLUTIONS**

3 Check appropriate box for federal tax classification; check only one of the following seven boxes:  
☐ Individual/sole proprietor or single-member LLC  
☒ C Corporation  
☐ S Corporation  
☐ Partnership  
☐ Trust/estate  
☐ Limited liability company. Enter the tax classification (C=C corporation, S=S corporation, P=partnership) ▶  
**Note.** For a single-member LLC that is disregarded, do not check LLC; check the appropriate box in the line above for the tax classification of the single-member owner.  
☐ Other (see instructions) ▶

4 Exemptions (codes apply only to certain entities, not individuals; see instructions on page 3):  
Exempt payee code (if any) \_\_\_\_\_  
Exemption from FATCA reporting code (if any) \_\_\_\_\_  
(Applies to accounts maintained outside the U.S.)

5 Address (number, street, and apt. or suite no.)  
**P.O. BOX 1588 or 1590** **REMIT TO ADDRESS: P.O. BOX 11407**

6 City, state, and ZIP code  
**LAUREL, MS 39441** **BIRMINGHAM, AL 35246-1132**

7 List account number(s) here (optional)

**Part I Taxpayer Identification Number (TIN)**

Enter your TIN in the appropriate box. The TIN provided must match the name given on line 1 to avoid backup withholding. For individuals, this is generally your social security number (SSN). However, for a resident alien, sole proprietor, or disregarded entity, see the Part I Instructions on page 3. For other entities, it is your employer identification number (EIN). If you do not have a number, see *How to get a TIN* on page 3.

**Note.** If the account is in more than one name, see the instructions for line 1 and the chart on page 4 for guidelines on whose number to enter.

**Social security number**

			-			-			
--	--	--	---	--	--	---	--	--	--

or

**Employer identification number**

6	4	-	0	4	6	6	1	4	3
---	---	---	---	---	---	---	---	---	---

**Part II Certification**

Under penalties of perjury, I certify that:

- The number shown on this form is my correct taxpayer identification number (or I am waiting for a number to be issued to me); and
- I am not subject to backup withholding because: (a) I am exempt from backup withholding, or (b) I have not been notified by the Internal Revenue Service (IRS) that I am subject to backup withholding as a result of a failure to report all interest or dividends, or (c) the IRS has notified me that I am no longer subject to backup withholding; and
- I am a U.S. citizen or other U.S. person (defined below); and
- The FATCA code(s) entered on this form (if any) indicating that I am exempt from FATCA reporting is correct.

**Certification instructions.** You must cross out item 2 above if you have been notified by the IRS that you are currently subject to backup withholding because you have failed to report all interest and dividends on your tax return. For real estate transactions, item 2 does not apply. For mortgage interest paid, acquisition or abandonment of secured property, cancellation of debt, contributions to an individual retirement arrangement (IRA), and generally, payments other than interest and dividends, you are not required to sign the certification, but you must provide your correct TIN. See the instructions on page 3.

**Sign Here** Signature of U.S. person ▶

Date ▶

**General Instructions**

Section references are to the Internal Revenue Code unless otherwise noted.

**Future developments.** Information about developments affecting Form W-9 (such as legislation enacted after we release it) is at [www.irs.gov/fw9](http://www.irs.gov/fw9).

**Purpose of Form**

An individual or entity (Form W-9 requester) who is required to file an information return with the IRS must obtain your correct taxpayer identification number (TIN) which may be your social security number (SSN), individual taxpayer identification number (ITIN), adoption taxpayer identification number (ATIN), or employer identification number (EIN), to report on an information return the amount paid to you, or other amount reportable on an information return. Examples of information returns include, but are not limited to, the following:

- Form 1099-INT (interest earned or paid)
- Form 1099-DIV (dividends, including those from stocks or mutual funds)
- Form 1099-MISC (various types of income, prizes, awards, or gross proceeds)
- Form 1099-B (stock or mutual fund sales and certain other transactions by brokers)
- Form 1099-S (proceeds from real estate transactions)
- Form 1099-K (merchant card and third party network transactions)

• Form 1098 (home mortgage interest), 1098-E (student loan interest), 1098-T (tuition)

• Form 1099-C (canceled debt)

• Form 1099-A (acquisition or abandonment of secured property)

Use Form W-9 only if you are a U.S. person (including a resident alien), to provide your correct TIN.

**If you do not return Form W-9 to the requester with a TIN, you might be subject to backup withholding.** See *What is backup withholding?* on page 2.

By signing the filed-out form, you:

- Certify that the TIN you are giving is correct (or you are waiting for a number to be issued),
- Certify that you are not subject to backup withholding, or
- Claim exemption from backup withholding if you are a U.S. exempt payee. If applicable, you are also certifying that as a U.S. person, your allocable share of any partnership income from a U.S. trade or business is not subject to the withholding tax on foreign partners' share of effectively connected income, and
- Certify that FATCA code(s) entered on this form (if any) indicating that you are exempt from the FATCA reporting, is correct. See *What is FATCA reporting?* on page 2 for further information.

## **Non-Public Works Bid Affidavit Instructions**

- Affidavit is supplied as a courtesy to Affiants, but it is the responsibility of the affiant to insure the affidavit they submit to Jefferson Parish complies, in both form and content, with federal, state and parish laws.
- Affidavit must be signed by an authorized representative of the entity or the affidavit will not be accepted.
- Affidavit must be notarized or the affidavit will not be accepted.
- Notary must sign name, print name, and include bar/notary number, or the affidavit will not be accepted.
- Affiant **MUST** select either A or B when required or the affidavit will not be accepted.
- Affiants who select choice A must include an attachment or the affidavit will not be accepted.
- If both choice A and B are selected, the affidavit will not be accepted.
- Affidavit marked N/A will not be accepted.
- It is the responsibility of the Affiant to submit a new affidavit if any additional campaign contributions are made after the affidavit is executed but prior to the time the council acts on the matter.

*Instruction sheet may be omitted when submitting the affidavit*





**Bid Number 50 - 00119955**

**A ONE-TIME PURCHASE OF LIGHT POLES AND ACCESSORIES FOR THE  
JEFFERSON PARISH DEPARTMENT OF PARKS AND RECREATION**

**BID DUE: July 11, 2017, 2:00 PM**

**ATTENTION VENDORS!!!**

**Please review all pages and respond accordingly, complying with all provisions  
in the technical specifications and Jefferson Parish Instructions for Bidders and  
General Terms and Conditions. All bids must be received in the Purchasing  
Department by the bid due date and time.**

**Jefferson Parish Purchasing Department  
200 Derbigny Street  
General Government Building, Suite 4400  
Gretna, LA 70053  
Buyer Name: Melissa Ovalle  
Buyer Email: [movalle@jeffparish.net](mailto:movalle@jeffparish.net)  
Buyer Phone: (504) 364-2687**



# JEFFERSON PARISH

## Department of Purchasing

**Michael S. Yenni**  
Parish President

**Brenda C. Patel**  
Director

### **CHANGES TO JEFFERSON PARISH BIDDING PROCEDURES**

The East bank Office of Purchasing is now open! We are located in the Joseph S. Yenni Building, 1221 Elmwood Park Blvd., Suite 404, Jefferson, LA 70123. Bidders may submit bid responses at this location, pending authorization in each bid package. **Bidders should carefully read and must respond accordingly per the requirements of the bid packages. NOTE: Bidders submitting bids on the day of bid opening, bidders must submit at the West Bank location only.**

#### **Other Changes Continued:**

- For all advertised sealed bids, written evidence of signature authority must be included with bid submission.
- Current W9 Forms and vendor applications may be submitted at any time; however, if your company is not registered and/or a current W-9 form is not on file, a current W-9 form must be supplied upon contract execution, should you be awarded a contract and/or issued a purchase order.
- Upon contract execution, successful bidder must produce final insurance certificates per standard Jefferson Parish insurance requirements. Proof of insurance is required for bidding purposes. Bidders must read the insurance requirements attachment included in each bid package for specific instructions.

**Bidders should reference the "Additional Requirements" section of the bid instructions and/or the "Important Notice to Bidders" included in the bid package for specific requirements to respond accordingly.**

For more information, please call Jefferson Parish Purchasing at 504-364-2678.



DATE: 6/20/2017  
BID NO.: 50-00119955

INVITATION TO BID  
THIS IS NOT AN ORDER

Page: 1

## JEFFERSON PARISH

PURCHASING DEPARTMENT  
P.O. BOX 9  
GRETNA, LA. 70054-0009  
504-364-2678

BUYER: MOVALLE@jeffparish.net

BIDS WILL BE RECEIVED IN THE WEST BANK PURCHASING DEPT, SUITE 4400, JEFFERSON PARISH GENERAL GOVERNMENT BUILDING, 200 DERBIGNY STREET, GRETNA, LA 70053 UNTIL 2:00 PM, 7/11/2017 AND PUBLICLY OPENED THEREAFTER.

For convenience, bidders may also submit bids in the East Bank Purchasing Department, Suite 404, Jefferson Parish Joseph S. Yenni Building, 1221 Elmwood Park Blvd., Jefferson LA 70123. However, if submitting bids on the day of bid opening, bidders must submit at the West Bank location only. All bids will be publicly opened at the West Bank location.

At no charge, bidders may also submit via Jefferson Parish's electronic procurement page by visiting [www.jeffparishbids.net](http://www.jeffparishbids.net) to register for this free site. Additional instructions are included in the text box highlighting electronic procurement.

### LATE BIDS WILL NOT BE ACCEPTED

Unless submitting via online (see Page 3), each bid must be submitted in a sealed envelope bearing on the outside; the name of the Bidder, his address, and the name of the project for which the bid is submitted and the bid number.

**NOTE: ONLY BIDS WRITTEN IN INK OR TYPEWRITTEN, AND PROPERLY SIGNED BY A MEMBER OF THE FIRM OR AUTHORIZED REPRESENTATIVE, WILL BE ACCEPTED. PENCIL AND/OR PHOTOSTATIC FIGURES OR SIGNATURES SHALL RESULT IN BID REJECTION.**

### INSTRUCTIONS FOR BIDDERS AND GENERAL CONDITIONS

#### THE FOLLOWING INSTRUCTIONS APPLY TO ALL BIDS

All bids submitted are subject to these instructions and general conditions and any special conditions and specifications contained herein, all of which are made part of this bid proposal reference. By submitting a bid, vendor agrees to comply with all provisions of Louisiana Law as well be in compliance with the Jefferson Parish Code of Ordinances, Louisiana Code of Ethics, applicable Jefferson Parish ethical standards and Jefferson Parish Resolution No. 113646 and/or Resolution No. 113647.

All vendors submitting bids should register as a Jefferson Parish vendor if not already yet registered. Registration forms may be downloaded from <http://purchasing.jeffparish.net> and by clicking on Vendor Information. Current W-9 forms with respective Tax Identification numbers and vendor applications may be submitted at any time; however, if your company is not registered and/or a current W-9 form is not on file, vendor registration is mandatory. Further, a current W-9 form and respective Tax Identification number must be supplied upon contract execution, should you be awarded a contract and/or issued purchase order. Failure to do so may result in delay of payment.

All quotations shall be based on F.O.B. Agency warehouse or job site, anywhere within the Parish as designated by the Purchasing Department. This provision does not apply to public works projects

JEFFERSON PARISH requires all products to be new (current) and all work must be performed according to standard practices for the project. Unless otherwise specified, no aftermarket parts will be accepted. Unless otherwise specified, all workmanship and materials must have at least one (1) year guaranty, in writing, from the date of delivery and/or acceptance of the project. Any deviations or alterations from the specifications must be indicated and/or supporting documentation supplied with bid submission.

Bidders should submit all questions in writing and fax them to the Purchasing Department at (504) 364-2693 no later than FIVE (5) working days prior to bid opening. Bid numbers should be mentioned in all requests. Questions may also be emailed to the buyer for this bid at the email address listed above. If submitting online, vendors may send questions via the E-Procurement site no later than Five (5) working days prior to the bid opening.

If this bid requires a pre-bid conference (see Additional Requirements section), bidders are advised that such conference will be held to allow bidders the opportunity to identify any discrepancies in the bid specifications and seek further clarification regarding instructions. The Purchasing Department will issue a written response to bidders' questions in the form of an Addendum. Please note that all official communication will be expressed in the form of an addendum.

All formal Addenda require written acknowledgement on the bid form by the bidder. Failure to acknowledge an Addendum on the bid form shall cause the bid to be rejected. JEFFERSON PARISH reserves the right to award bid to next lowest responsive and responsible bidder in this event.

The purpose and intention of this invitation to bid is to afford all suppliers an equal opportunity to bid on all construction, maintenance, repair, operating supplies and/or equipment listed in this bid proposal. JEFFERSON PARISH WILL ACCEPT ONE BID ONLY FROM EACH VENDOR. Items bid must meet specifications.

Visit our website at [HTTP://PURCHASING.JEFFPARISH.NET](http://PURCHASING.JEFFPARISH.NET)



DATE: 6/20/2017

BID NO.: 50-00119955

Page: 2

JEFFERSON PARISH will accept one price for each item unless otherwise indicated. Two or more prices for one item will result in bid rejection. Bidders are required to complete, sign and return the bid form and/or complete and return the associated line item pricing forms as indicated. Vendors must not alter the bid forms. Doing so will cause the bid to be rejected.

A corporate resolution or written evidence of the individual signing the bid having such authority must be submitted with the bid. Failure to comply will cause bid to be rejected. For corporate entities, such written evidence may be a printout of the Louisiana Secretary of State's website listing the signatory as an officer. Such printout shall be included with the bid submission. Bids submitted by Owners or Sole Proprietorships must include certification that he or she owns the entity for which the bid is signed. This documentation must be submitted with the bid. Failure to do so will result in bid rejection.

NOTE: A sample corporate resolution can be downloaded from our website <http://purchasing.jeffparish.net> or you may provide your own document. A sample certification of sole proprietorship can also be downloaded from our website <http://purchasing.jeffparish.net> or you may provide your own document.

## INSTRUCTIONS FOR BIDDERS AND GENERAL CONDITIONS

A. AWARD OF CONTRACT: JEFFERSON PARISH reserves the right to award contracts or place orders on a lump sum or individual item basis, or such combination, as shall in its judgment be in the best interest of JEFFERSON PARISH. Every contract or order shall be awarded to the LOWEST RESPONSIVE and RESPONSIBLE BIDDER, taking into consideration the CONFORMITY WITH THE SPECIFICATIONS and the DELIVERY AND/OR COMPLETION DATE. SPLIT AWARDS MADE TO SEVERAL VENDORS WILL ONLY BE GRANTED TO THOSE DEEMED RESPONSIVE AND RESPONSIBLE.

All bid prices shall remain valid for 45 days. Jefferson Parish and the lowest responsive and responsible bidder(s) by mutual written consent may mutually agree to extend the deadline for award by one (1) or more extensions of thirty (30) calendar days.

PROTESTS: Only those vendors that submitted a bid in response to this solicitation may submit a protest in writing to the Director of the Purchasing within 48 hours of bid opening. The Purchasing Director will review it in connection with the Parish Attorney's Office which will then respond in writing as soon as possible.

PREFERENCE: Unless federal funding is directly spent by Jefferson Parish for this purchase, preference is hereby given to materials, supplies, and provisions produced, manufactured or grown in Louisiana, quality being equal to articles offered by competitors outside the state. "LSA – R.S. 38:2251-2261"

B. USE OF BRAND NAMES AND STOCK NUMBERS: Where brand names and stock numbers are specified, it is for the purpose of establishing certain minimum standards of quality. Bids may be submitted for products of equal quality, provided brand names and stock numbers are specified. Complete product data may be required prior to award.

C. CANCELLATION OF CONTRACT: JEFFERSON PARISH reserves the right to cancel all or any part if not shipped promptly. No charges will be allowed for parking or cartage unless specified in quotation. The order must not be filled at a higher price than quoted. JEFFERSON PARISH reserves the right to cancel any contract at anytime and for any reason by issuing a THIRTY (30) day written notice to the contractor.

For good cause and as consideration for executing a contract with Jefferson Parish, vendor conveys, sells, assigns and transfers to Jefferson Parish or its assigns all rights, title and interest in and to all causes of action it may now or hereafter acquire under the antitrust laws of the United States and the State of Louisiana, relating to the particular good or services purchased or acquired by Jefferson Parish.

D. PRICES: Jefferson Parish is exempt from paying sales tax under LSA-R.S. 47:301 (8)(c). All prices for purchases by Jefferson Parish of supplies and materials shall be quoted in the unit of measure specified and unless otherwise specified, shall be exclusive of state and Parish taxes. The price quoted for work shall be stated in figures. In the event there is a difference in unit prices and totals, the unit price shall prevail.

Quantities listed are for bidding purposes only. Actual requirements may be more or less than quantities listed.

Bidders are not to exclude from participation in, deny the benefits of, or subject to discrimination under any program or activity, any person in the United States on the grounds of race, color, national origin, or sex; nor discriminate on the basis of age under the Age Discrimination Act of 1975, or with respect to an otherwise qualified handicapped individual as provided in Section 504 of the Rehabilitation Act of 1973, or on the basis of religion, except that any exemption from such prohibition against discrimination on the basis of religion as provided in the Civil Rights Act of 1964, or Title VI and VII of the Act of April 11, 1968, shall also apply. This assurance includes compliance with the administrative requirements of the Revenue Sharing final handicapped discrimination provisions contained in Section 51.55 (c), (d), (e), and (k)(5) of the Regulations. New construction or renovation projects must comply with Section 504 of the 1973 Rehabilitation Act, as amended, in accordance with the American National Standard Institute's specifications (ANSI A17.1-1961).

Jefferson Parish and its partners as the recipients of federal funds are fully committed to awarding a contract(s) to firm(s) that will provide high quality services and that are dedicated to diversity and to containing costs. Thus, Jefferson Parish strongly encourages the involvement of minority and/or woman-owned business enterprises (DBE's, including MBE's, WBE's and SBE's) to stimulate participation in procurement and assistance programs.



## INSTRUCTIONS FOR BIDDERS AND GENERAL CONDITIONS

Advertised bids will be tabulated and a copy of the tabulation will be forwarded to each responding bidder.

### IN ACCORDANCE WITH STATE REGULATIONS JEFFERSON PARISH OFFERS ELECTRONIC PROCUREMENT TO ALL VENDORS

This electronic procurement system allows vendors the convenience of reviewing and submitting bids online.

This is a secure site and authorized personnel have limited read access only. Bidders are encouraged to submit electronically using this free service; while the website accepts various file types, one single PDF file containing all appropriate and required bid documents is preferred. Bidders submitting uploaded images of bid responses are solely responsible for clarity. If uploaded images/documents are not legible, then bidder's submission will be rejected. Please note all requirements contained in this bid package for electronic bid submission.

Please visit our E-Procurement Page at [www.jeffparishbids.net](http://www.jeffparishbids.net) to register and view Jefferson Parish solicitations. For more information, please visit the Purchasing Department page at <http://purchasing.jeffparish.net>.

The general specifications for construction projects and the purchase of materials, services and/or supplies are those adopted by the JEFFERSON PARISH Council by Resolution No. 113646 or 113647 dated 12/09/09. The general conditions adopted by this resolution shall be considered as much a part of this document as if they were written wholly herein. A copy may be obtained from the Office of the Parish Clerk, Suite 6700, Jefferson Parish General Government Building, 200 Derbigny Street, Gretna, LA 70053. You may also obtain a copy by visiting the Purchasing Department webpage at <http://purchasing.jeffparish.net> and clicking on Online Forms.

### ADDITIONAL REQUIREMENTS FOR THIS BID

PLEASE MATCH THE NUMBERS PRINTED IN THIS BOX WITH THE  
CORRESPONDING INSTRUCTIONS BELOW.

13, 15

1. All bidders must attend the MANDATORY pre-bid conference and will be required to sign in and out as evidence of attendance. In accordance with LSA R.S. 38:2212(l), all prospective bidders shall be present at the beginning of the MANDATORY pre-bid conference and shall remain in attendance for the duration of the conference. Any prospective bidder who fails to attend the conference or remain for the duration shall be prohibited from submitting a bid for the project.
2. Attendance to this pre-bid conference is optional. However, failure to attend the pre-bid conference shall not relieve the bidder of responsibility for information discussed at the conference. Furthermore, failure to attend the pre-bid conference and inspection does not relieve the successful bidder from the necessity of furnishing materials or performing any work that may be required to complete the work in accordance with the specification with no additional cost to the owner.
3. Contractor must hold current applicable JEFFERSON PARISH licenses with the Department of Inspection and Code Enforcement. Contractor shall obtain any and all permits required by the JEFFERSON PARISH Department of Inspection and Code Enforcement. The contractor shall be responsible for the payment of these permits. All permits must be obtained prior to the start of the project. Contractor must also hold any and all applicable Federal and State licenses. Contractor shall be responsible for the payment of these permits and shall obtain them prior to the start of the project.
4. A LA State Contractor's License will be required in accordance with LSA R.S. 37-2150 et. seq. and such license number will be shown on the outside of the bid envelope. Failure to comply will cause the bid to be rejected. Additionally if submitting the bid electronically, then the license number must be entered in the appropriate field in the Electronic Procurement system. Failure to comply will cause the bid to be rejected.
5. It is the bidder's responsibility to visit the job site and evaluate the job before submitting a bid.
6. Job site must be clean and free of all litter and debris daily and upon completion of the contract. Passageways must be kept clean and free of material, equipment, and debris at all times. Flammable material must be removed from the job site daily because storage will not be permitted on the premises. Precautions must be exercised at all times to safeguard the welfare of JEFFERSON PARISH and the general public.



**INSTRUCTIONS FOR BIDDERS AND GENERAL CONDITIONS**

7. **PUBLIC WORKS BIDS:** All awards for public works in excess of \$5,000.00 will be reduced to a formal contract which shall be recorded at the contractor's expense with the Clerk of Court and Ex-Officio Recorder of Mortgages for the Parish of Jefferson. A price list of recordation costs may be obtained from the Clerk of Court and Ex-Officio Recorder of Mortgages for the Parish of Jefferson. All awards in excess of \$25,000.00 will require both a performance and a payment bond. Unless otherwise stated in the bid specifications, the performance bond requirements shall be 100% of the contract price. Unless otherwise state in the bid specifications, the payment bond requirements shall be 100% of the contract price. Both bonds shall be supplied at the signing of the contract.
8. **NON-PUBLIC WORKS BIDS:** A performance bond will be required for this bid. The amount of the bond will be 100% of the contract price unless otherwise indicated in the specifications. The performance bond shall be supplied at the signing of the contract.
9. **NON-PUBLIC WORKS BIDS:** A payment bond will be required for this bid. The amount of the bond will be 100% of the contract price unless otherwise indicated in the specifications. The payment bond shall be supplied at the signing of the contract.
10. Unless otherwise stated in the bid specifications, the successful bidder will be required to procure standard insurance policies evidencing Parish-mandated insurance requirements as indicated on the attached "insurance requirements" sheet. All bidders must comply with the instructions in this sheet. Failure to comply will cause bid to be rejected.
11. A bid bond will be required with bid submission in the amount of 5% of the total bid, unless otherwise stated in the bid specifications. Acceptable forms shall be limited to cashier's check, certified check, or surety bid bond. All sureties must be in original format (no copies) If submitting a bid online, vendors must submit an electronic bid bond through the respective online clearinghouse bond management system(s) as indicated in the electronic bid solicitation on Central Auction House. No scanned paper copies of any bid bond will be accepted as part of the electronic bid submission.
12. This is a requirements contract to be provided on an as needed basis. JEFFERSON PARISH makes no representations on warranties with regard to minimum guaranteed quantities unless otherwise stated in the bid specifications.
13. Freight charges should be included in total cost when quoting. If not quoted FOB DELIVERED, freight must be quoted as a separate item. Bid may be rejected if not quoted FOB DELIVERED or if freight charges are not indicated on bid form.
14. **PUBLIC WORKS BIDS - Completed, Signed and Properly Notarized Affidavits Required;** This applies to all solicitations for construction, alteration or demolition of public buildings or projects, in conformity with the provisions contained in LSA-RS 38:2212.9, LSA-RS 38:2212.10, LSA-RS 38:2224, and Sec 2-923.1 of the Jefferson Parish Code of Ordinances. For bidding purposes, all bidders must submit with bid submission COMPLETED, SIGNED and PROPERLY NOTARIZED Affidavits, including: Non-Conviction Affidavit, Non-Collusion Affidavit, Campaign Contribution Affidavit, Debt Disclosures Affidavit and E-Verify Affidavit. For the convenience of vendors, all affidavits have been combined into one form entitled PUBLIC WORKS BID AFFIDAVIT. This affidavit must be submitted in its original format, and without material alteration, in order to be compliant and for the bid to be considered responsive. A scanned copy of the completed, signed and properly notarized affidavit may be submitted with the bid, however, the successful bidder must submit the original affidavit in its original format and without material alteration upon contract execution. Failure to comply will result in the bid submission being rejected as non-responsive. The Parish reserves the right to award bid to the next lowest responsive and responsible bidder in this event.
15. **NON PUBLIC WORK BIDS - Completed, Signed and Properly Notarized Affidavits Required** in conformity with the provisions contained in LSA – RS 38:2224 and Sec 2-923.1 of the Jefferson Parish Code of Ordinances. For bidding purposes, all bidders must submit with bid submission COMPLETED, SIGNED and PROPERLY NOTARIZED Affidavits, including: Non-Collusion Affidavit, Debt Disclosures Affidavit and Campaign Contribution Affidavit. For the convenience of vendors, all affidavits have been combined into one form entitled NON PUBLIC WORKS BID AFFIDAVIT. This affidavit must be submitted in its original format, and without material alteration, in order to be compliant and for the bid to be considered responsive. A scanned copy of the completed, signed and properly notarized affidavit may be submitted with the bid, however, the successful bidder must submit the original affidavit in its original format and without material alteration upon contract execution. Failure to comply will result in the bid submission being rejected as non-responsive. The Parish reserves the right to award bid to the next lowest responsive and responsible bidder in this event.
16. The ensuing contract for this bid solicitation may be eligible for FEMA reimbursement and/or Federal funding/reimbursement. As such, the referenced appendix will be applicable accordingly and shall be considered a part of the bid documents. All applicable certifications must be duly completed, signed and submitted with bid submission. Failure to submit applicable certifications with bid submission will result in bid rejection.
17. For this project, the Contractor shall not pay any state or local sales or use taxes on materials and equipment which are affixed and made part of the immovable property of the project or which permanently incorporated in the project (hereinafter referred to as "applicable materials and equipment"). All purchases of applicable materials or equipment shall be made by the contractor on behalf of and as the agent of Jefferson Parish (Owner), a political subdivision of the State of Louisiana. No state and local sales and use taxes are owned on applicable materials and equipment under the provisions of Act 1029 of the 1991 Regular Session – Louisiana Revised Statute 47:301(8)(c). Owner will furnish contractor a certificate form which certifies that Owner is not required to pay such state or local sales and use taxes, and contractor shall furnish a copy of such certificate to all vendors or suppliers of the applicable materials and equipment

It shall be the duty of every parish officer, employee, department, agency, special district, board, and commission: and the duty of every contractor, subcontractor, and licensee of the parish, and the duty of every applicant for certification of eligibility for a parish contract or program, to cooperate with the Inspector General in any investigation, audit, inspection, performance review, or hearing pursuant to Jefferson Parish Code of Ordinances Section 2-155.10(19). By submitting a bid, vendor acknowledges this and will abide by all provisions of the referenced Jefferson Parish Code of Ordinances.