



R.J. Tricon Co., LLC
Materials Handling Specialist Since 1921

QUOTATION

PAGE: 1

DATE: 07/24/19

QUOTE NO. 152196

PLEASE REFER TO ABOVE WHEN ORDERING
REPLY TO YOUR INQUIRY:

FROM: R.J. TRICON CO., LLC
908 SHREWSBURY RD
NEW ORLEANS LA 70121
PHONE: 504-836-0573
FAX: 504-836-0576

TO: JEFFERSON PARISH
PURCHASING DEPARTMENT
200 DERBIGNY ST. STE 4400
GRETNA LA 70053

ATTN: MR. BEN LEPINE

C.C.

FOLD

WHEN REPLYING, CONTACT:

JASON C FALLON

ITEM NO.	QUANTITY	DESCRIPTION	UNIT PRICE	UNITS
10	200	REF: SUBURBAN RAKE CHAIN CHAIN STAINLESS STEEL COTTERS NO ATTACHMENTS 6-7 WEEK LEAD TIME DUE TO THE CUSTOM NATURE OF THE CHAIN, NO DRAWINGS ARE AVAILABLE UNTIL AFTER ORDER ASSEMBLED AND SHIPPED IN 10 FT STRANDS AND TAGGED FOR FIELD ASSEMBLY TO MAKE 2 STRANDS AT 100 FT EACH ORDERS LESS THAN 200 FEET WILL NOT BE COVERED BY PREPAID FREIGHT AT THE CURRENT PRICE PER FOOT SITE VISIT TO CONFIRM DIMENSIONS AFTER ORDER	64.5600	FT
*** TOTALS *** EXTENDED AMOUNT			12912.00	

F.O.B. SP - PPD & ADD

PAYMENT TERMS NET 30 DAYS

THANK YOU FOR YOUR PROMPT PAYMENT!

ABOVE PRICES GOOD FOR 30 DAYS

BY 
AUTHORIZED SIGNATURE

Webster

American Materials, American Labor and American Pride

WEBSTER

This catalog covers many of the standard sizes and styles of products we manufacture. Webster's in-house engineering and manufacturing personnel understand high volume production and custom designed chains giving our customers high quality, competitively priced chains specifically suited to each application. For additional support in selecting, identifying or sizing a chain, vibrating conveyor or commercial casting contact our customer service department. It is our goal to earn your business now and in the future. We strive to make your experience one that you will remember as simply the best.

Webster's ISO 9001:2000 Quality Management System registration insures product quality and continuous improvement.

HISTORY

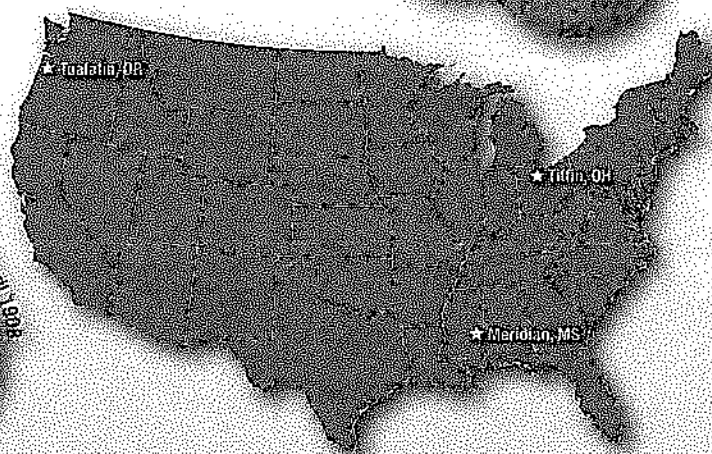
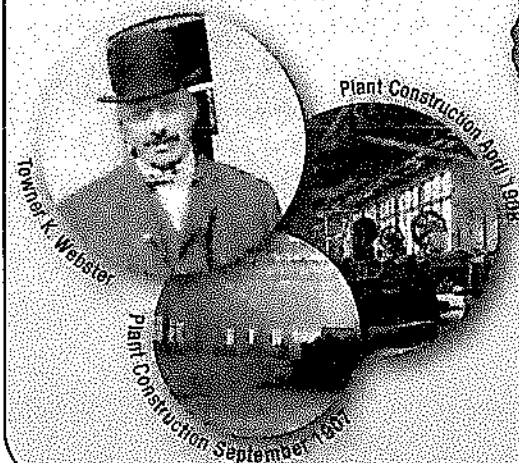
Since 1876 Webster Industries, Inc. has provided conveying solutions to a broad range of markets with a wide variety of products and expertise. Towner K. Webster founded Webster with his "Common Sense" elevator bucket in Chicago, Illinois. In 1907 Webster relocated to Tiffin, Ohio where our corporate headquarters reside today. Over the past century Webster evolved from producing elevator buckets to being the world's leading manufacturer of engineered class chains, commercial castings and vibrating conveyors. Webster's reputation for high quality products comes from the same principles it was founded on - American materials, American labor and American pride.

LOCATIONS

Our Tiffin headquarters has over 300,000 square feet of manufacturing space and includes a malleable iron foundry, punch press operations, heat treat facility, machine shop, sheet metal fabrication department, chain assembly area, in-plant laboratory and testing facilities. Our two warehousing and assembly locations located in Meridian, Mississippi and Tualatin, Oregon allow for quick distribution throughout North America. Our three manufacturing facilities stock over 250,000 feet of chain to serve our customer requirements.

MARKETS

Webster serves a broad range of markets including asphalt, aggregate, ethanol, automotive, food, mining, forest products, steel processing, beef and pork processing, grain, foundry, citrus, sugar, cement, sewage treatment, recycling, demolition debris, construction equipment and numerous others.



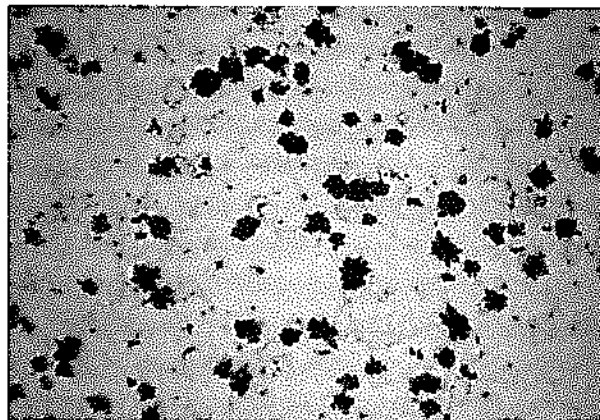
800-243-9327

Chain Materials

The information in the Engineering Data section of this catalog is provided as a service to assist the user in the application of Webster products. Webster Industries, Inc. accepts no liability for the use of this information and reserves the right to change or delete parts of this section at any time without notice.

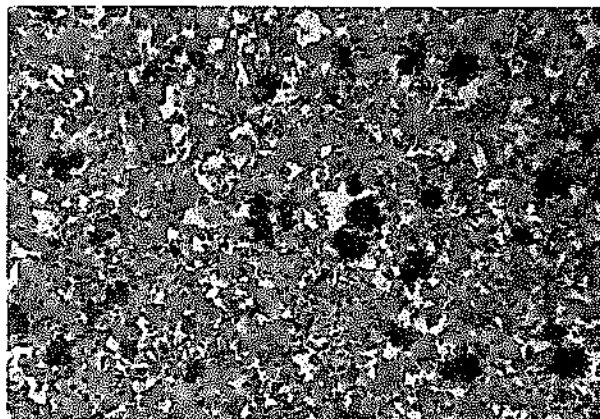
MALLEABLE IRON

Malleable iron was one of the first materials used for cast chains and is still commonly used because of its strength, ductility and relatively low cost. As shown in the photomicrograph, top right, malleable iron is composed of a ferrite matrix (white areas) within which temper carbon nodules (black areas) are distributed. The grain boundaries are clearly visible. This combination produces a tough, ductile and machineable casting which can absorb shock and distortion without failure. Where increased strength and wear resistance is desired, Webster Duramal is recommended.



DURAMAL

Duramal is a heat treated copper bearing malleable iron developed by Webster to provide greater strength, higher hardness and greater wear resistance than that of standard malleable iron. Through special heat treatment of malleable iron, carbon is allowed to migrate from the temper carbon nodules and combine with the ferrite to form a stronger constituent known as martensite. The photomicrograph, bottom right, shows the fine grain martensitic matrix of Duramal. Duramal, as shown in the chain charts in Section B, is approximately 25% stronger than standard malleable iron.



Duramal can be used at temperatures up to 1,000° F at reduced working loads.

Duramal is copper bearing and well suited for sewage installations as it has higher strength and greater corrosion resistance.

File Hard Duramal is specially heat treated to secure a high surface hardness that provides excellent wearing qualities for abrasive conditions.

WEBLOY

WEBLOY is a white iron alloy containing carbon, silicon, manganese, sulphur and phosphorus. The material content percentages are carefully controlled to produce a material that is extremely hard and long wearing. Chief uses are in applications where great resistance to wear and abrasion are required.

STEELS

A variety of steels are used in the manufacture of chain components. The selection depends upon strength and application requirements.

Chain pins are made from medium carbon Duralloy, medium carbon Super Duralloy or medium carbon alloy steels. Pins may be thru hardened or both thru and induction hardened to meet the necessary wear and strength requirements.

Bushings are usually made from low carbon or low carbon alloy steels and are carburized for wear resistance.

Steel rollers are made from either low carbon or low carbon alloy steels, medium carbon or medium carbon alloy steels. Low carbon and low carbon alloy rollers are carburized, while medium carbon and medium carbon alloy rollers are thru hardened and/or induction hardened.

Sidebars are made from medium carbon or medium carbon alloy steels. Sidebars of medium carbon steels may be used in the as-rolled condition or may be thru hardened for additional strength. Sidebars of medium carbon alloy steels are normally thru hardened.

STAINLESS STEELS

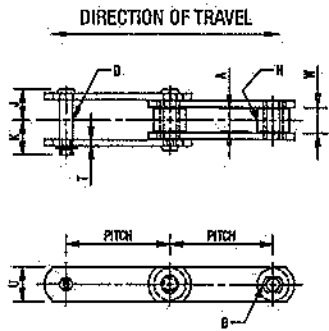
Chain components may be fabricated of one of several grades of stainless steel where additional corrosion or heat resistance is required.

Symbol Definitions

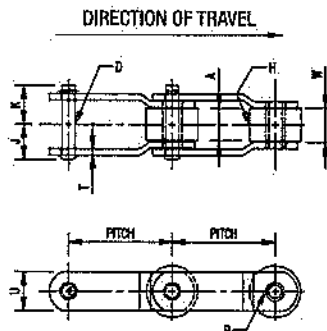
The following is a list of the symbols used in the formulas in this section. Each symbol is followed by its unit of measurement in parentheses. Following each symbol is its definition and a reference to the correct table or equation for determining its value. Care should be taken to insure that the values used in the formulas are expressed in the units shown in the following list.

(-)	Denotes dimensionless quality.	M (lbs/ft)	Weight per foot of conveyed material, use formula A-1 or A-2, page A-5.
A (-)	Empirical factor used in calculating f_r , see Table 7, page A-11, for A factor values for various bearing surfaces.	N_h (-)	Number of teeth of driving or head sprocket.
a (ft)	Vertical rise or height of an inclined conveyor, use diagram on page A-7.	N_t (-)	Number of teeth on driven or tail sprocket.
b (ft)	Horizontal length of an inclined conveyor, use diagram on page A-7.	n (-)	Number of chain strands.
C (ft)	Conveyor center distance.	P (lbs)	Total chain or conveyor pull at head shaft, use the formula in the conveyor layouts starting on page A-6.
CFM (ft ³ /min)	Conveyor capacity or conveyed material flow rate, use formula A-2, page A-5.	P_C (lbs)	Catenary tension, use formula C-2, page A-5.
D (in)	Chain roller outside diameter.	P_d (lbs)	Design chain pull, see page A-9.
D_h (in)	Pitch diameter of head sprocket, use formula H-1, page A-5.	P_s (lbs)	Chain or conveyor required to pull material out of a hopper on a feeder conveyor.
D_t (in)	Pitch diameter of tail or foot sprocket, use formula H-2, page A-5.	P_{tu} (lbs)	Conveyor take-up tension, this value is usually known, if not, 200-300 pounds is a good estimate.
d (in)	Chain bushing outside diameter.	p (in)	Chain pitch.
E (in)	Excess chain, the length of chain greater than U_C which results in forming catenary, use formula C-1, page A-5.	Q (lbs)	Conveyor or chain pull from digging of material in the boot of an elevator, use formula E-1, page A-5.
F_n (-)	Multiple strand factor, see design chain pull, page A-9.	q (lbs/ft ³)	Density of conveyed material, see Table 4, page A-11, for densities of various materials.
F_p (-)	Composite service factor, see design chain pull, page A-9, and Table 9, page A-12.	RPM (rpm)	Conveyor driving shaft speed.
F_s (-)	Speed factor, see design chain pull, page A-9, and Tables 10 and 11, page A-13.	S (ft/min)	Conveyor or chain speed, use formula A-3, page A-5.
f_d (-)	Digging factor, use formula E-1, page A-5.	T (ft-lbs)	Torque transmitted by the driving or head shaft, use formula G-2, page A-5.
f_h (-)	Material horizontal friction factor, see Table 4, page A-11, for values of f_h for various materials.	TPH (tons/hr)	Conveyor capacity or conveyed material flow rate, use formula A-1, page A-5.
f_m (-)	Material friction factor, this is equal to f_w if the material is carried or f_v if the material is sliding.	t (in-lbs)	Torque transmitted by the driving or head shaft, use formula G-1, page A-5.
f_p (-)	Service factor, see Table 9, page A-12.	U_a (ft)	Length of conveyor side skirt boards.
f_r (-)	Chain rolling friction factor, see Table 6, page A-11, for estimated values of f_r , see Table 7, page A-11, to determine f_r after the specific chain selection has been made.	U_C (ft)	Horizontal length of unsupported catenary, see diagram, page A-6.
f_s (-)	Chain sliding friction factor, see Table 5, page A-11.	U_h (ft)	Length of hopper opening.
f_v (-)	Material vertical friction factor, see Table 4, page A-11.	U_s (ft)	Horizontal length of supported return strand, see diagram, page A-6.
f_w (-)	Chain friction factor, this is equal to f_r if the chain is rolling or f_s if the chain is sliding.	v (lbs)	Bucket, flight, scraper or other chain attachment weight.
g (ft)	Width of conveyor trough.	W (lbs/ft)	Weight per foot of moving conveyor components, including chain flights, buckets, scrapers, etc., use formula I-1, page A-5.
HP (hp)	Horsepower required at the conveyor driving shaft, approximate values can be found using formulas F-1, F-2 and F-3, page A-5. For more accurate values refer to the appropriate formula in the conveyor layouts starting on page A-6.	w (lbs/ft)	Weight per foot of chain, estimated chain weights, see Table 3, page A-10. For specific chain weights refer to the appropriate chain section of this catalog.
h (in)	Height of material sliding against skirt boards.	X (ft)	Bucket, flight, scraper or other chain attachment spacing.
J (lbs)	Conveyor or chain pull from material sliding against skirt boards, use formula D-1, page A-5.	Y (ft)	Width of hopper opening.
L (pitches)	Length of chain pitches required if chain is pulled taut, use formula B-1, page A-5.	Z (in)	Sag of catenary, see diagram, page A-6, use formula C-1, page A-5.
		α (degrees)	Angle of inclination of an inclined conveyor, see diagram, page A-7.

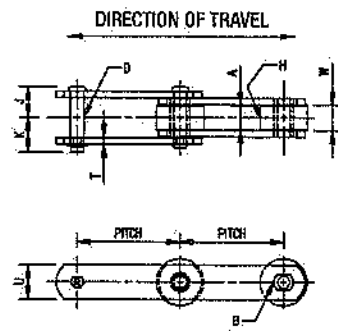
SBR Chains



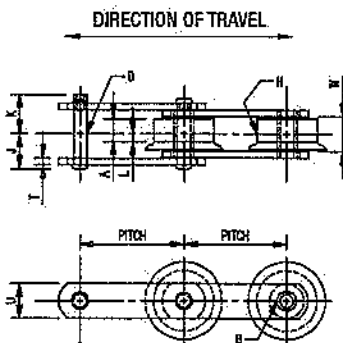
STYLE 1



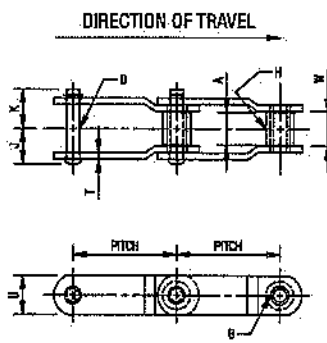
STYLE 2



STYLE 3



STYLE 4



STYLE 5

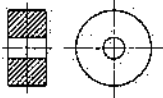
Chain Style Descriptions

Style 1 Straight Sidebar, Small Roller
 Style 2 Offset Sidebar, Large Roller
 Style 3 Straight Sidebar, Large Roller
 Style 4 Straight Sidebar, Flanged Roller
 Style 5 Offset Sidebar, Small Roller

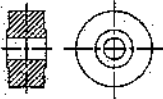
Chain No.	Chain Style	Average Pitch Inches	Approx. Links in 10 Feet	Average Weight Per Ft. Lbs.	Average Ultimate Strength in Lbs.	Rated Working Load in Lbs.★	General Dimensions			Pins		
							Inside Sidebars W	Q To Cotter End K	Q To Head or Rivet End J	Dia. D	Style	Material
S1117	3	9.000	13 3/4	4.4	21,000	3,500	1 1/16	1 1/2	1 1/4	7/16	B	ALY.H.T.
RS958P	3	9.000	13 3/4	7.8	30,000	4,650	1 1/4	1 7/32	1 1/16	5/8	A	ALY.H.T.
RS958F	4	9.000	13 3/4	7.8	30,000	4,650	1 1/4	1 7/32	1 1/16	5/8	A	ALY.H.T.
RS911P	3	9.000	13 3/4	7.9	38,000	4,650	1 1/2	1 25/32	1 1/8	5/8	A	ALY.H.T.
RS911F	4	9.000	13 3/4	8.6	38,000	4,650	1 1/2	1 25/32	1 1/8	5/8	A	ALY.H.T.
809	4	9.000	13 3/4	13.0	33,000	6,500	2	1 15/16	1 25/32	3/4	A	ALY.I.H.
RS928	5	9.000	13 3/4	8.5	50,000	7,200	2	2 1/32	2 1/32	3/4	A	ALY.H.T.
RS922P	3	9.000	13 3/4	11.7	50,000	7,200	2	2 1/32	2 1/32	3/4	A	ALY.H.T.
RS922F	4	9.000	13 3/4	12.3	50,000	7,200	2	2 1/32	2 1/32	3/4	A	ALY.H.T.
RS932P	3	9.000	13 3/4	13.3	50,000	7,200	2	2 1/32	2 1/32	3/4	A	ALY.H.T.
RS932F	4	9.000	13 3/4	14.3	50,000	7,200	2	2 1/32	2 1/32	3/4	A	ALY.H.T.
S2342	5	9.000	13 3/4	9.2	65,000	9,000	1 15/16	2 1/2	2 1/4	7/8	A	ALY.I.H.
RS933P	3	9.000	13 3/4	15.6	56,000	9,200	2 1/4	2 19/32	2 1/16	7/8	A	ALY.H.T.
RS933F	4	9.000	13 3/4	16.5	56,000	9,200	2 1/4	2 19/32	2 1/16	7/8	A	ALY.H.T.
RS938	5	9.000	13 3/4	10.4	56,000	9,200	2 1/4	2 19/32	2 1/16	7/8	A	ALY.H.T.
RS933 1/2 P	3	9.000	13 3/4	14.1	56,000	9,200	2 1/4	2 19/32	2 1/16	7/8	A	ALY.H.T.

SBR Chains

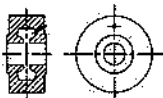
ROLLERS



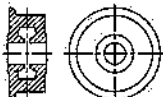
STYLE A



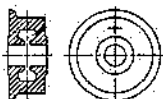
STYLE B



STYLE D



STYLE E



STYLE G

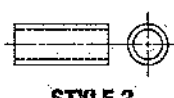
BUSHINGS



STYLE 1



STYLE 2



STYLE 3

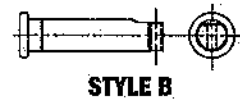


STYLE 4

PINS



STYLE A



STYLE B



STYLE F

Abbreviations of Material and Treatment

M.C.	Medium Carbon
M.C.H.T.	Medium Carbon, Heat Treated
ALY.H.T.	Alloy Steel, Heat Treated
M.C.I.H.	Medium Carbon, Induction Hardened
ALY.I.H.	Alloy Steel, Induction Hardened
L.C.C.H.	Low Carbon, Case Hardened
ALY.C.H.	Alloy Steel, Case Hardened
WEBLOY.	White Iron

PAGE E-19

SBR CHAINS

Chain No.	Sidebars			Bushings			Rollers					Common Attachment Numbers
	Thk.	Height	Material	Outside Dia.	Style	Material	Tread Dia.	Tread Width	Chain To Wheel Ga.	Style	Material	
S1117	¼	1½	M.C.H.T.	1⅞	3	L.C.C.H.	2	1⅞	—	A	L.C.C.H.	
RS958P	¼	2	M.C.	1	2	ALY.C.H.	3	1½	—	D	WEBLOY	A2, G16, K2
RS958F	¼	2	M.C.	1	2	L.C.C.H.	3	1⅞	⅜	E	WEBLOY	A2, G16, K2
RS911P	⅝	2	M.C.	1	2	L.C.C.H.	3	1¼	—	B	WEBLOY	A2, G16, K2
RS911F	⅝	2½	M.C.	1	2	L.C.C.H.	3	1⅞	⅝	E	WEBLOY	A2, G16, K2
809	¼	2	M.C.	1⅞	2	ALY.C.H.	3½	1⅞	⅞	G	WEBLOY	
RS928	⅜	2	M.C.	1⅞	2	ALY.C.H.	1⅞	1⅞	—	A	L.C.C.H.	M14
RS922P	⅜	2	M.C.	1⅞	2	L.C.C.H.	3½	1¼	—	D	WEBLOY	A2, G16, K2
RS922F	⅜	2	M.C.	1⅞	2	L.C.C.H.	3½	1⅞	⅞	G	WEBLOY	A2, G16, K2
RS932P	⅜	2	M.C.	1⅞	2	L.C.C.H.	4	1¼	—	D	WEBLOY	A2, G16, K2
RS932F	⅜	2	M.C.	1⅞	2	L.C.C.H.	4	1⅞	⅞	G	WEBLOY	A2, G16, K2
S2342	½	2½	M.C.	1¼	2	ALY.C.H.	1¼	1⅜	—	A	L.C.C.H.	M14
RS933P	⅜	2½	M.C.	1¼	2	L.C.C.H.	4	2	—	D	WEBLOY	A2, G5, G16, K2
RS933F	⅜	2½	M.C.	1¼	2	L.C.C.H.	4	1⅞	⅞	G	WEBLOY	A2, G5, G16, K2
RS938	⅜	2½	M.C.	1¼	2	ALY.C.H.	1⅞	2⅞	—	A	L.C.C.H.	M14
RS933½P	⅜	2	M.C.	1¼	2	L.C.C.H.	3	2⅞	—	B	L.C.C.H.	G5, G16

Have dimensions verified for installation purposes.
All dimensions in inches unless otherwise noted.
See Symbol Definitions in the Index Section.

800-243-9327



CENTRALBIDDING
FROM CENTRAL AUCTION HOUSE

**5000127361 PURCHASE OF CATENARY TRASH RAKE CHAIN FOR THE
DRAINAGE DEPARTMENT
Jefferson Parish Government**

Project documents obtained from www.CentralBidding.com
23-Jul-2019 01:58:28 PM



BID 50-127361
PURCHASE OF CATENARY TRASH RAKE CHAIN FOR
THE EAST BANK DRAINAGE DEPARTMENT

JULY 26, 2019 @ 11:00 A.M.

ATTENTION VENDORS!!!

Please review all pages and respond accordingly, complying with all provisions in the technical specifications and Jefferson Parish Instructions for Bidders and General Terms and Conditions. All bids must be received in the Purchasing Department by the bid due date and time.

Jefferson Parish Purchasing Department
200 Derbigny Street-Suite 4400
Gretna, LA 70053
Please Email Any Questions To:
Mark Buttery
MBUTTERY@JEFFPARISH.NET
504-364-2810

DATE: 7/16/2019

INVITATION TO BID
THIS IS NOT AN ORDER

Page: 1

BID NO.: 50-00127361

JEFFERSON PARISH

PURCHASING DEPARTMENT
P.O. BOX 9
GRETN, LA. 70054-0009
504-364-2678

VENDOR:

BUYER: MBUTTERY@jeffparish.net

Bids will be received until 11:00 AM, 7/26/2019 via online at www.jeffparishbids.net or by hand delivery, USPS mail or other courier service to Purchasing Department, 200 Derbigny Street (General Government Building), Suite 4400, Gretna, LA 70053. For convenience, bidders may also submit bids in the East Bank Purchasing Department, Suite 404, Jefferson Parish Joseph S. Yenni Building, 1221 Elmwood Park Blvd., Jefferson LA 70123. However, if submitting bids on the day of bid opening, bidders must submit at the West Bank location only.

All bids submitted are subject to these instructions and general conditions and any special conditions and specifications contained herein, all of which are made part of this bid proposal reference. By submitting a bid, vendor agrees to comply with all provisions of Louisiana Law, as well be in compliance with the Jefferson Parish Code of Ordinances, Louisiana Code of Ethics, applicable Jefferson Parish ethical standards and Jefferson Parish Resolution No. 113646 and/or Resolution No. 113647. A copy of these resolutions may be obtained from the Office of the Parish Clerk, Suite 6700, Jefferson Parish General Government Building, 200 Derbigny Street, Gretna, LA 70053. You may also obtain a copy by visiting the Purchasing Department webpage at purchasing.jeffparish.net and clicking on On-line forms.

All vendors submitting bids should register as a Jefferson Parish vendor if not already yet registered. Registration forms may be downloaded from <http://purchasing.jeffparish.net> and by clicking on Vendor Information. Current W-9 forms with respective Tax Identification numbers and vendor applications may be submitted at any time; however, if your company is not registered and/or a current W-9 form is not on file, vendor registration is mandatory. Further, a current W-9 form and respective Tax Identification number must be supplied upon contract execution, should you be awarded a contract and/or issued purchase order. Failure to do so may result in delay of payment.

As per LSA-RS 47:301 et seq., all governmental bodies are excluded from payment of sales taxes to any Louisiana taxing body. Quotations shall be based on F.O.B. Delivered, anywhere within the Parish as designated by the Purchasing Department. JEFFERSON PARISH WILL ACCEPT ONE BID ONLY FROM EACH VENDOR. Items bid must meet specifications. JEFFERSON PARISH will accept one price for each item unless otherwise indicated. Two or more prices for one item will result in bid rejection. Bidders are required to complete, sign and return the bid form and/or complete and return the associated line item pricing forms as indicated. The price quoted for work shall be stated in figures. In the event there is a difference in unit prices and totals, the unit prices shall prevail.

JEFFERSON PARISH reserves the right to award contracts or place orders on a lump sum or individual item basis, or such combination, as shall in its judgment be in the best interest of JEFFERSON PARISH. Every contract or order shall be awarded to the LOWEST RESPONSIVE and RESPONSIBLE BIDDER, taking into consideration the CONFORMITY WITH THE SPECIFICATIONS and the DELIVERY AND/OR COMPLETION DATE.

PROTESTS: Only those vendors that submit bids in response to this solicitation may protest any element of the procurement, in writing to the Director of the Purchasing Department. Written protest must be received within 48 hours of the release of the bid tabulation by the Purchasing Department. After consultation, the Parish Attorney's Office will then respond to protests in writing. (For more information, please see Chapter 2, Article VII, Division 2, Sec. 2-914.1 of the Jefferson Parish Code of Ordinances.)

JEFFERSON PARISH reserves the right to cancel all or any part of an order if not shipped promptly. No charges will be allowed for parking or cartage unless specified in the quotation. The order must not be filled at a higher price than quoted. JEFFERSON PARISH reserves the right to cancel at any time and for any reason by issuing a THIRTY (30) day written notice to the contractor.

JEFFERSON PARISH requires all products to be new (current) and all work must be performed according to standard practices for the project. Unless otherwise specified, no aftermarket parts will be accepted. Unless otherwise specified, all workmanship and materials must have at least one (1) year guaranty, in writing, from the date of delivery and/or acceptance of the project. Any deviations or alteration from the specifications must be indicated on the bid form for each item and upon request, product data for same must be submitted by the time specified by the Purchasing Department.

If this bid requires a pre-bid conference (see Additional Requirements section), bidders are advised that such conference will be held to allow bidders the opportunity to identify any discrepancies in the bid specifications and seek further clarification regarding instructions. The Purchasing Department will issue a written response to bidders' questions in the form of an Addendum.

All formal Addenda require written acknowledgment on the bid form by the bidder. Failure to acknowledge an Addendum on the bid form shall cause the bid to be rejected; JEFFERSON PARISH reserves the right to award bid to next lowest responsive and responsible bidder in this event.

USE OF BRAND NAMES AND STOCK NUMBERS: Where brand names and stock numbers are specified, it is for the purpose of establishing certain minimum standards of quality. Bids may be submitted for products of equal quality, provided brand names and stock numbers are specified. Complete product data may be required prior to award.

Quantities listed are for bidding purposes only. Actual requirements may be more or less than quantities listed.

Bidders are not to exclude from participation in, deny the benefits of, or subject to discrimination under any program or activity, any person in the United States on the grounds of race, color, national origin, or sex; nor discriminate on the basis of age under the Age Discrimination Act of 1975, or with respect to an otherwise qualified handicapped individual as provided in Section 504 of the Rehabilitation Act of 1973, or on the basis of religion, except that any exemption from such prohibition against discrimination on the basis of religion as provided in the Civil Rights Act of 1964, or Title VI and VII of the Act of April 11, 1968, shall also apply. This assurance includes compliance with the administrative requirements of the Revenue Sharing final handicapped discrimination provisions contained in Section 51.55 (c), (d), (e), and (k)(5) of the Regulations. New construction or renovation projects must comply with Section 504 of the 1973 Rehabilitation Act, as amended, in accordance with the American National Standard Institute's specifications (ANSI A117.1-1991).

Jefferson Parish and its partners as the recipients of federal funds are fully committed to awarding a contract(s) to firm(s) that will provide high quality services and that are dedicated to diversity and to containing costs. Thus, Jefferson Parish strongly encourages the involvement of minority and/or woman-owned business enterprises (DBE's, including MBE's, WBE's and SBE's) to stimulate participation in procurement and assistance programs.

INSTRUCTIONS FOR BIDDERS AND GENERAL CONDITIONS**IN ACCORDANCE WITH STATE REGULATIONS JEFFERSON PARISH OFFERS ELECTRONIC PROCUREMENT TO ALL VENDORS**

This electronic procurement system allows vendors the convenience of reviewing and submitting bids online. This is a secure site and authorized personnel have limited read access only. Bidders are encouraged to submit electronically using this free service; while the website accepts various file types, one single PDF file containing all appropriate and required bid documents is preferred. Bidders submitting uploaded images of bid responses are solely responsible for clarity. If uploaded images/documents are not legible, then bidder's submission will be rejected. Please note all requirements contained in this bid package for electronic bid submission.

Please visit our E-Procurement Page at www.jeffparishbids.net to register and view Jefferson Parish solicitations. For more information, please visit the Purchasing Department page at <http://purchasing.jeffparish.net>.

ADDITIONAL REQUIREMENTS FOR THIS BID

PLEASE MATCH THE NUMBERS PRINTED IN THIS BOX WITH THE CORRESPONDING INSTRUCTIONS BELOW.

5,13

1. All bidders must attend the MANDATORY pre-bid conference and will be required to sign in and out as evidence of attendance. In accordance with LSA R.S. 38:2212(I), all prospective bidders shall be present at the beginning of the MANDATORY pre-bid conference and shall remain in attendance for the duration of the conference. Any prospective bidder who fails to attend the conference or remain for the duration shall be prohibited from submitting a bid for the project.
2. Attendance to this pre-bid conference is optional. However, failure to attend the pre-bid conference shall not relieve the bidder of responsibility for information discussed at the conference. Furthermore, failure to attend the pre-bid conference and inspection does not relieve the successful bidder from the necessity of furnishing materials or performing any work that may be required to complete the work in accordance with the specification with no additional cost to the owner.
3. Contractor must hold current applicable JEFFERSON PARISH licenses with the Department of Inspection and Code Enforcement. Contractor shall obtain any and all permits required by the JEFFERSON PARISH Department of Inspection and Code Enforcement. The contractor shall be responsible for the payment of these permits. All permits must be obtained prior to the start of the project. Contractor must also hold any and all applicable Federal and State licenses. Contractor shall be responsible for the payment of these permits and shall obtain them prior to the start of the project.
4. A LA State Contractor's License will be required in accordance with LSA R.S. 37-2150 et. seq. and such license number will be shown on the outside of the bid envelope. Failure to comply will cause the bid to be rejected. Additionally if submitting the bid electronically, then the license number must be entered in the appropriate field in the Electronic Procurement system. Failure to comply will cause the bid to be rejected.
5. It is the bidder's responsibility to visit the job site and evaluate the job before submitting a bid.
6. Job site must be clean and free of all litter and debris daily and upon completion of the contract. Passageways must be kept clean and free of material, equipment, and debris at all times. Flammable material must be removed from the job site daily because storage will not be permitted on the premises. Precautions must be exercised at all times to safeguard the welfare of JEFFERSON PARISH and the general public.

INSTRUCTIONS FOR BIDDERS AND GENERAL CONDITIONS

7. **PUBLIC WORKS BIDS:** All awards for public works in excess of \$5,000.00 will be reduced to a formal contract which shall be recorded at the contractor's expense with the Clerk of Court and Ex-Officio Recorder of Mortgages for the Parish of Jefferson. A price list of recordation costs may be obtained from the Clerk of Court and Ex-Officio Recorder of Mortgages for the Parish of Jefferson. All awards in excess of \$25,000.00 will require both a performance and a payment bond. Unless otherwise stated in the bid specifications, the performance bond requirements shall be 100% of the contract price. Unless otherwise state in the bid specifications, the payment bond requirements shall be 100% of the contract price. Both bonds shall be supplied at the signing of the contract.
8. **NON-PUBLIC WORKS BIDS:** A performance bond will be required for this bid. The amount of the bond will be 100% of the contract price unless otherwise indicated in the specifications. The performance bond shall be supplied at the signing of the contract.
9. **NON-PUBLIC WORKS BIDS:** A payment bond will be required for this bid. The amount of the bond will be 100% of the contract price unless otherwise indicated in the specifications. The payment bond shall be supplied at the signing of the contract.
10. All bidders must comply with the requirements stated in the attached "Standard Insurance Requirements" sheet attached to this bid solicitation. Prior to contract executions/purchase order issuance, the successful bidder will be required to provide final insurance certificates which shall name Jefferson Parish as an additional insured in accordance with the instructions in the aforementioned "Standard Insurance Requirements" sheet.
11. A bid bond will be required with bid submission in the amount of 5% of the total bid, unless otherwise stated in the bid specifications. Acceptable forms shall be limited to cashier's check, certified check, or surety bid bond. All sureties must be in original format (no copies). If submitting a bid online, vendors must submit an electronic bid bond through the respective online clearinghouse bond management system(s) as indicated in the electronic bid solicitation on Central Auction House. No scanned paper copies of any bid bond will be accepted as part of the electronic bid submission.
12. This is a requirements contract to be provided on an as needed basis. JEFFERSON PARISH makes no representations on warranties with regard to minimum guaranteed quantities unless otherwise stated in the bid specifications.
13. Freight charges should be included in total cost when quoting. If not quoted FOB DELIVERED, freight must be quoted as a separate item. Bid may be rejected if not quoted FOB DELIVERED or if freight charges are not indicated on bid form.
14. **PUBLIC WORKS BIDS - Completed, Signed and Properly Notarized Affidavits Required;** This applies to all solicitations for construction, alteration or demolition of public buildings or projects, in conformity with the provisions contained in LSA-RS 38:2212.9, LSA-RS 38:2212.10, LSA-RS 38:2224, and Sec 2-923.1 of the Jefferson Parish Code of Ordinances. For bidding purposes, all bidders must submit with bid submission COMPLETED, SIGNED and PROPERLY NOTARIZED Affidavits, including: Non-Conviction Affidavit, Non-Collusion Affidavit, Campaign Contribution Affidavit, Debt Disclosures Affidavit and E-Verify Affidavit. For the convenience of vendors, all affidavits have been combined into one form entitled PUBLIC WORKS BID AFFIDAVIT. This affidavit must be submitted in its original format, and without material alteration, in order to be compliant and for the bid to be considered responsive. A scanned copy of the completed, signed and properly notarized affidavit may be submitted with the bid, however, the successful bidder must submit the original affidavit in its original format and without material alteration upon contract execution. Failure to comply will result in the bid submission being rejected as non-responsive. The Parish reserves the right to award bid to the next lowest responsive and responsible bidder in this event.
15. **NON PUBLIC WORK BIDS - Completed, Signed and Properly Notarized Affidavits Required** in conformity with the provisions contained in LSA – RS 38:2224 and Sec 2-923.1 of the Jefferson Parish Code of Ordinances. For bidding purposes, all bidders must submit with bid submission COMPLETED, SIGNED and PROPERLY NOTARIZED Affidavits, including: Non-Collusion Affidavit, Debt Disclosures Affidavit and Campaign Contribution Affidavit. For the convenience of vendors, all affidavits have been combined into one form entitled NON PUBLIC WORKS BID AFFIDAVIT. This affidavit must be submitted in its original format, and without material alteration, in order to be compliant and for the bid to be considered responsive. A scanned copy of the completed, signed and properly notarized affidavit may be submitted with the bid, however, the successful bidder must submit the original affidavit in its original format and without material alteration upon contract execution. Failure to comply will result in the bid submission being rejected as non-responsive. The Parish reserves the right to award bid to the next lowest responsive and responsible bidder in this event.
16. The ensuing contract for this bid solicitation may be eligible for FEMA reimbursement and/or Federal funding/reimbursement. As such, the referenced appendix will be applicable accordingly and shall be considered a part of the bid documents. All applicable certifications must be duly completed, signed and submitted with bid submission. Failure to submit applicable certifications with bid submission will result in bid rejection.

It shall be the duty of every parish officer, employee, department, agency, special district, board, and commission; and the duty of every contractor, subcontractor, and licensee of the parish, and the duty of every applicant for certification of eligibility for a parish contract or program, to cooperate with the Inspector General in any investigation, audit, inspection, performance review, or hearing pursuant to Jefferson Parish Code of Ordinances Section 2-155.10(19). By submitting a bid, vendor acknowledges this and will abide by all provisions of the referenced Jefferson Parish Code of Ordinances.

DATE: 7/16/2019

INVITATION TO BID
THIS IS NOT AN ORDER

Page: 4

BID NO.: 50-00127361

JEFFERSON PARISH

PURCHASING DEPARTMENT
P.O. BOX 9
GRETN, LA. 70054-0009
504-364-2678

VENDOR: R.J. Tricon Company

BUYER: MBUTTERY

As per LSA-RS 47:301 et seq., all governmental bodies are excluded from payment of sales taxes to any Louisiana taxing body. Quotations shall be based on F.O.B. Agency warehouse or jobsite, anywhere within the Parish as designated by the Purchasing Department.

JEFFERSON PARISH reserves the right to cancel all or any part of an order if not shipped promptly. No charges will be allowed for parking or cartage unless specified in quotation. The order must not be filled at a higher price than quoted. JEFFERSON PARISH reserves the right to cancel at any time and for any reason by issuing a THIRTY (30) day written notice to the contractor.

JEFFERSON PARISH is expecting all products to be new and all work to be done in workman-like manner, according to standard practices. Any deviations or alteration from the specifications must be indicated on the bid form for each item and upon request, product data for same must be submitted by the time specified by the Purchasing Department.

DELIVERY: FOB JEFFERSON PARISH

INDICATE DELIVERY DATE ON EQUIPMENT AND SUPPLIES

7 weeks after approval drawings

INDICATE STARTING TIME (IN DAYS) FOR CONSTRUCTION WORK

INDICATE COMPLETION TIME (IN DAYS) FOR CONSTRUCTION WORK

In the event that addenda are issued with this bid, bidders MUST acknowledge all addenda on the bid form. Bidder must acknowledge receipt of an addendum on the bid form as indicated. Failure to acknowledge any addendum on the bid form will result in bid rejection.

Acknowledge Receipt of Addenda: NUMBER: _____
NUMBER: _____
NUMBER: _____
NUMBER: _____

LOUISIANA CONTRACTOR'S LICENSE NO.: (if applicable) _____

*** ALL BIDDERS MUST COMPLETE SECTION BELOW ***	
FIRM NAME: <u>R.J. Tricon Company</u>	
SIGNATURE: (Must be signed here) <u>Tom Baggio</u>	TITLE: <u>Sales Manager</u>
PRINT OR TYPE NAME: <u>Tom Baggio</u>	
ADDRESS: <u>908 Shrewsbury Rd.</u>	
CITY, STATE: <u>Jefferson, LA</u>	ZIP: <u>70121</u>
TELEPHONE: <u>(504) 836-0573</u>	FAX: <u>(504) 836-0576</u>
EMAIL ADDRESS: <u>Tom.Baggio@rjtricon.com</u>	

TOTAL PRICE OF ALL BID ITEMS: \$ 12,912.00

DATE: 7/16/2019

Page: 5

INVITATION TO BID FROM JEFFERSON PARISH - continued

BID NO.: 50-00127361

SEALED BID

ITEM NUMBER	QUANTITY	U/M	DESCRIPTION OF ARTICLES	UNIT PRICE QUOTED	TOTALS
1	200.00	EA	<p>PURCHASE OF CATENARY TRASH RAKE CHAIN FOR THE EAST BANK DRAINAGE DEPARTMENT</p> <p>0010 - CHAIN LINKS, DOMESTIC, TO REPLACE CATENARY TRASH RAKE CHAIN, D963R CARRYING CHAIN - 9" PITCH, STEEL THIMBLE ROLLER CHAIN, CS STRAIGHT SIDE BARS, AUS 40,000LBS, HEAT TREATED STEEL PIN, HARDENED STEEL ROLLERS WITH STAINLESS STEEL COTTERS **DELIVERED IN 2 (TWO) STRANDS.**</p> <p>-This is to replace the existing chain on catenary trash rake at P/S #2</p> <p>*****SPECIFICATIONS ATTACHED*****</p> <p>*VENDOR IS RESPONSIBLE FOR FIELD MEASURING AND DIMENSIONING. MUST MATCH EXISTING CHAIN</p> <p>*QUALITY SHALL MEET OR EXCEED THAT OF EXISTING CHAIN; REQUIRES APPROVAL OF JEFFERSON PARISH ENGINEER BEFORE MANUFACTURING</p> <p>***FREIGHT SHALL BE INCLUDED IN BID***</p> <p>DELIVER TO: SUBURBAN #2 PUMP STATION 4800 LAKE VILLA DRIVE METAIRIE LA 70002</p> <p>*FOR ANY & ALL QUESTIONS REGARDING THIS BID OR TO SCHEDULE SITE VISITS, PLEASE CONTACT ONE OF THE FOLLOWING:</p> <p>BEN LEPINE BLEPINE@JEFFPARISH.NET 504.736.6759 OR MARK TIBO MTIBO@JEFFPARISH.NET 504.736.6731</p>		

BID #50-00127361

Suburban Catenary Rake Chain

The intent of this specification is to define the minimum requirements of the Parish of Jefferson for the replacement of 200 links of the catenary rake chain for the Suburban pump station.

Submittals:

The following is required with the bid package.

- A complete specification and submittal of all components of the chain
- One copy of all link "Bill of Materials" of the unit's construction, cutaway drawings, and dimensions as offered to confirm compliance with the current chains.
- One descriptive brochure showing photographs and/or describing the chain manufacturer.

Vendor is required to schedule a visit to the Suburban pump station, take appropriate measurements and submit with a letter attached to the documents listing in detail the design and standards used to replicate the existing chains at the station.

Mere attachment of brochures covering standard manufactured equipment shall not be adequate. Any bidder not able to supply information shall be considered non-responsive and shall not be accepted.

To Schedule Site Visit, Contact: Ben Lepine – BLEPINE@JEFFPARISH.NET – 504.736.6759

or

Mark Tibo – MTIBO@JEFFPARISH.NET – 504.736.6731

Qualifications:

Chains must be made in the United States.

Delivery:

Freight shall be included in base bid. The chains shall be delivered to the Suburban pump station located at 4800 Lake Villa Drive, Metairie, LA 70006. All deliveries shall be made during normal operating hours between 8:00 AM and 4:00 PM Monday through Friday. Deliveries will not be accepted during Jefferson parish holidays.

Specifications:

The rake chains shall be two matched strands of steel thimble roller chain having identical pitch and carbon steel straight side bars, and an ultimate strength of 40,000 pounds. The chains shall also have case-hardened steel thimbles, heat treated steel pins, and straight faced, hardened steel rollers with stainless steel cotter pins.

Warranty:

1. Special Warranty: Manufacturer's warranty shall be provided

