

Jefferson Parish, Louisiana

Wastequip Bid Response



Bid No.: 50-00118761

Bid Title: One Time Purchase of Refuse
Containers

Bid Due: January 25, 2017

Bid Time: 11:00 am

ORIGINAL



(Corporate Headquarters)

6525 Morrison Blvd., Suite 300

Charlotte, NC 28211

877.468.9278

www.wastequip.com

Table of Contents

Introduction and Company Information

Corporate Profile	
Wastequip Fact Sheet	

Bid Forms

Bid Documents	
Wastequip Quote.....	

Wastequip Supporting Documents

Wastequip Container Brochure	
Wastequip Container Warranty	

Wastequip Additional Information

Points of Contact.....	
Wastequip Evidence of Insurance	
Wastequip W-9	

WASTEQUIP®

Corporate Profile

Wastequip was founded in 1989 by Chuck Walton, with the mission of creating a national waste equipment manufacturing company. Walton acquired several privately owned companies to create a North American footprint of 40 locations by 2007. Over the next few years, many of the smaller, regional brands were consolidated under other Wastequip brands.



Since its formation, Wastequip has developed a reputation for superior quality waste handling and recycling equipment. With a strong history of manufacturing expertise and product innovation, Wastequip manufactures a full line of products, systems, and solutions for the collection and transportation of solid waste, recyclables, liquid waste, and organics. Based in Charlotte, N.C., Wastequip employs more than 1,500 associates with operations in the U.S., Canada, and Mexico.

Wastequip has locations throughout the U.S. and Canada, which allows us to serve our customer base on a local level while delivering economies of scale not possible with smaller manufacturers. This makes us uniquely able to manufacture product to local specifications while making our entire line of products readily available throughout North America. We have the product you need in stock, where you need it and available for fast delivery.

Our product line includes:

- **WASTEQUIP** brand compaction equipment to include stationary and self-contained compactors and vertical balers
- **WASTEQUIP** brand steel containers to include front load, rear load, side load and roll-off containers
- **ACCURATE** brand intermodal products
- **TOTER** brand plastic roll carts and containers
- **GALBREATH** brand hoists, container handlers and trailers
- **MOUNTAIN TARP** and **PIONEER** brand tarps and tarping systems
- **CUSCO** brand Industrial vacuum trucks and hydro excavators
- **GO TO PARTS** offers OEM and aftermarket parts

With extensive product knowledge and industry experience, the WASTEQUIP sales team focuses on developing relationships with customers to better understand their needs and requirements. WASTEQUIP has product specialists and a strong service group to support customers along with one of the best dealer networks in the industry for aftermarket installation and support.



M E S S A G E



To:

WASTEQUIP INC

FAX: 917048780734

From: DONNA REAMEY

JEFFERSON PARISH PURCHASING

FAX: 5043642693

TEL: 5043642684



DATE: 1/20/2017

INVITATION TO BID
THIS IS NOT AN ORDER

Page: 1

BID NO.: 50-00118761

JEFFERSON PARISH
PURCHASING DEPARTMENT
P.O. BOX 9
GRETN, LA. 70054-0009
504-364-2678

VENDOR: Wastequip Manufacturing Company, LLC

BUYER: DREAMEY

Bids will be received until 11:00 AM, 1/25/2017 via fax: 504-364-2693 or via online at www.jeffparishbids.net.

This site is free for all Jefferson Parish vendors. For additional information on registration or use of this free site, please see the text box highlighting electronic procurement.

All bids submitted are subject to these instructions and general conditions and any special conditions and specifications contained herein, all of which are made part of this bid proposal reference. By submitting a bid, vendor agrees to comply with all provisions of Louisiana Law, as well be in compliance with the Jefferson Parish Code of Ordinances, Louisiana Code of Ethics, applicable Jefferson Parish ethical standards and Jefferson Parish Resolution No. 113646 and/or Resolution No. 113647. A copy of these resolutions may be obtained from the Office of the Parish Clerk, Suite 6700, Jefferson Parish General Government Building, 200 Derbigny Street, Gretna, LA 70053. You may also obtain a copy by visiting the Purchasing Department webpage at purchasing.jeffparish.net and clicking on On-line forms.

All vendors submitting bids should register as a Jefferson Parish vendor if not already yet registered. Registration forms may be downloaded from <http://purchasing.jeffparish.net> and by clicking on Vendor Information. Current W-9 forms with respective Tax Identification numbers and vendor applications may be submitted at any time; however, if your company is not registered and/or a current W-9 form is not on file, vendor registration is mandatory. Further, a current W-9 form and respective Tax Identification number must be supplied upon contract execution, should you be awarded a contract and/or issued purchase order. Failure to do so may result in delay of payment.

As per LSA-RS 47:301 et seq., all governmental bodies are excluded from payment of sales taxes to any Louisiana taxing body. Quotations shall be based on F.O.B. Delivered, anywhere within the Parish as designated by the Purchasing Department. JEFFERSON PARISH WILL ACCEPT ONE BID ONLY FROM EACH VENDOR. Items bid must meet specifications. JEFFERSON PARISH will accept one price for each item unless otherwise indicated. Two or more prices for one item will result in bid rejection. Bidders are required to complete, sign and return the bid form and/or complete and return the associated line item pricing forms as indicated. The price quoted for work shall be stated in figures. In the event there is a difference in unit prices and totals, the unit prices shall prevail.

JEFFERSON PARISH reserves the right to award contracts or place orders on a lump sum or individual item basis, or such combination, as shall in its judgment be in the best interest of JEFFERSON PARISH. Every contract or order shall be awarded to the LOWEST RESPONSIVE and RESPONSIBLE BIDDER, taking into consideration the CONFORMITY WITH THE SPECIFICATIONS and the DELIVERY AND/OR COMPLETION DATE.

JEFFERSON PARISH reserves the right to cancel all or any part of an order if not shipped promptly. No charges will be allowed for parking or cartage unless specified in the quotation. The order must not be filled at a higher price than quoted. JEFFERSON PARISH reserves the right to cancel at any time and for any reason by issuing a THIRTY (30) day written notice to the contractor.

JEFFERSON PARISH requires all products to be new (current) and all work must be performed according to standard practices for the project. Unless otherwise specified, no aftermarket parts will be accepted. Unless otherwise specified, all workmanship and materials must have at least one (1) year guaranty, in writing, from the date of delivery and/or acceptance of the project. Any deviations or alterations from the specifications must be indicated and/or supporting documentation supplied with bid submission.

If this bid requires a pre-bid conference (see Additional Requirements section), bidders are advised that such conference will be held to allow bidders the opportunity to identify any discrepancies in the bid specifications and seek further clarification regarding instructions. The Purchasing Department will issue a written response to bidders' questions in the form of an Addendum.

All formal Addenda require written acknowledgment on the bid form by the bidder. Failure to acknowledge an Addendum on the bid form shall cause the bid to be rejected; JEFFERSON PARISH reserves the right to award bid to next lowest responsive and responsible bidder in this event.

USE OF BRAND NAMES AND STOCK NUMBERS: Where brand names and stock numbers are specified, it is for the purpose of establishing certain minimum standards of quality. Bids may be submitted for products of equal quality, provided brand names and stock numbers are specified. Complete product data may be required prior to award.

Quantities listed are for bidding purposes only. Actual requirements may be more or less than quantities listed.

Bidders are not to exclude from participation in, deny the benefits of, or subject to discrimination under any program or activity, any person in the United States on the grounds of race, color, national origin, or sex; nor discriminate on the basis of age under the Age Discrimination Act of 1975, or with respect to an otherwise qualified handicapped individual as provided in Section 504 of the Rehabilitation Act of 1973, or on the basis of religion, except that any exemption from such prohibition against discrimination on the basis of religion as provided in the Civil Rights Act of 1964, or Title VI and VII of the Act of April 11, 1968, shall also apply. This assurance includes compliance with the administrative requirements of the Revenue Sharing final handicapped discrimination provisions contained in Section 51.55 (c), (d), (e), and (k)(5) of the Regulations. New construction or renovation projects must comply with Section 504 of the 1973 Rehabilitation Act, as amended, in accordance with the American National Standard Institute's specifications (ANSI A117.1-1961).

DATE: 1/20/2017

BID NO.: 50-00118761

Page: 2

INSTRUCTIONS FOR BIDDERS AND GENERAL CONDITIONS

IN ACCORDANCE WITH STATE REGULATIONS JEFFERSON PARISH OFFERS ELECTRONIC PROCUREMENT TO ALL VENDORS

This electronic procurement system allows vendors the convenience of reviewing and submitting bids online. This is a secure site and authorized personnel have limited read access only. Bidders are encouraged to submit electronically using this free service; while the website accepts various file types, one single PDF file containing all appropriate and required bid documents is preferred. Bidders submitting uploaded images of bid responses are solely responsible for clarity. If uploaded images/documents are not legible, then bidder's submission will be rejected. Please note all requirements contained in this bid package for electronic bid submission.

Please visit our E-Procurement Page at www.jeffparishbids.net to register and view Jefferson Parish solicitations. For more information, please visit the Purchasing Department page at <http://purchasing.jeffparish.net>.

ADDITIONAL REQUIREMENTS FOR THIS BID

PLEASE MATCH THE NUMBERS PRINTED IN THIS BOX WITH THE CORRESPONDING INSTRUCTIONS BELOW.

13

1. All bidders must attend the MANDATORY pre-bid conference and will be required to sign in and out as evidence of attendance. In accordance with LSA R.S. 38:2212(i), all prospective bidders shall be present at the beginning of the MANDATORY pre-bid conference and shall remain in attendance for the duration of the conference. Any prospective bidder who fails to attend the conference or remain for the duration shall be prohibited from submitting a bid for the project.
2. Attendance to this pre-bid conference is optional. However, failure to attend the pre-bid conference shall not relieve the bidder of responsibility for information discussed at the conference. Furthermore, failure to attend the pre-bid conference and inspection does not relieve the successful bidder from the necessity of furnishing materials or performing any work that may be required to complete the work in accordance with the specification with no additional cost to the owner.
3. Contractor must hold current applicable JEFFERSON PARISH licenses with the Department of Inspection and Code Enforcement. Contractor shall obtain any and all permits required by the JEFFERSON PARISH Department of Inspection and Code Enforcement. The contractor shall be responsible for the payment of these permits. All permits must be obtained prior to the start of the project. Contractor must also hold any and all applicable Federal and State licenses. Contractor shall be responsible for the payment of these permits and shall obtain them prior to the start of the project.
4. A LA State Contractor's License will be required in accordance with LSA R.S. 37-2150 et. seq. and such license number will be shown on the outside of the bid envelope. Failure to comply will cause the bid to be rejected. Additionally if submitting the bid electronically, then the license number must be entered in the appropriate field in the Electronic Procurement system. Failure to comply will cause the bid to be rejected.
5. It is the bidder's responsibility to visit the job site and evaluate the job before submitting a bid.
6. Job site must be clean and free of all litter and debris daily and upon completion of the contract. Passageways must be kept clean and free of material, equipment, and debris at all times. Flammable material must be removed from the job site daily because storage will not be permitted on the premises. Precautions must be exercised at all times to safeguard the welfare of JEFFERSON PARISH and the general public.

DATE: 1/20/2017

BID NO.: 50-00118761

Page: 3

INSTRUCTIONS FOR BIDDERS AND GENERAL CONDITIONS

7. **PUBLIC WORKS BIDS:** All awards for public works in excess of \$5,000.00 will be reduced to a formal contract which shall be recorded at the contractor's expense with the Clerk of Court and Ex-Officio Recorder of Mortgages for the Parish of Jefferson. A price list of recordation costs may be obtained from the Clerk of Court and Ex-Officio Recorder of Mortgages for the Parish of Jefferson. All awards in excess of \$25,000.00 will require both a performance and a payment bond. Unless otherwise stated in the bid specifications, the performance bond requirements shall be 100% of the contract price. Unless otherwise state in the bid specifications, the payment bond requirements shall be 100% of the contract price. Both bonds shall be supplied at the signing of the contract.
8. **NON-PUBLIC WORKS BIDS:** A performance bond will be required for this bid. The amount of the bond will be 100% of the contract price unless otherwise indicated in the specifications. The performance bond shall be supplied at the signing of the contract.
9. **NON-PUBLIC WORKS BIDS:** A payment bond will be required for this bid. The amount of the bond will be 100% of the contract price unless otherwise indicated in the specifications. The payment bond shall be supplied at the signing of the contract.
10. Unless otherwise stated in the bid specifications, the successful bidder will be required to procure standard insurance policies evidencing Parish-mandated insurance requirements as indicated on the attached "Insurance requirements" sheet. All bidders must comply with the instructions in this sheet. Failure to comply will cause bid to be rejected.
11. A bid bond will be required with bid submission in the amount of 5% of the total bid, unless otherwise stated in the bid specifications. Acceptable forms shall be limited to cashier's check, certified check, or surety bid bond. All sureties must be in original format (no copies). If submitting a bid online, vendors must submit an electronic bid bond through the respective online clearinghouse bond management system(s) as indicated in the electronic bid solicitation on Central Auction House. No scanned paper copies of any bid bond will be accepted as part of the electronic bid submission.
12. This is a requirements contract to be provided on an as needed basis. JEFFERSON PARISH makes no representations on warranties with regard to minimum guaranteed quantities unless otherwise stated in the bid specifications.
13. Freight charges should be included in total cost when quoting. If not quoted FOB DELIVERED, freight must be quoted as a separate item. Bid may be rejected if not quoted FOB DELIVERED or if freight charges are not indicated on bid form.
14. **PUBLIC WORKS BIDS - Completed, Signed and Properly Notarized Affidavits Required;** This applies to all solicitations for construction, alteration or demolition of public buildings or projects, in conformity with the provisions contained in LSA-RS 38:2212.9, LSA-RS 38:2212.10, LSA-RS 38:2224, and Sec 2-923.1 of the Jefferson Parish Code of Ordinances. For bidding purposes, all bidders must submit with bid submission COMPLETED, SIGNED and PROPERLY NOTARIZED Affidavits, including: Non-Conviction Affidavit, Non-Collusion Affidavit, Campaign Contribution Affidavit, Debt Disclosures Affidavit and E-Verify Affidavit. For the convenience of vendors, all affidavits have been combined into one form entitled PUBLIC WORKS BID AFFIDAVIT. This affidavit must be submitted in its original format, and without material alteration, in order to be compliant and for the bid to be considered responsive. A scanned copy of the completed, signed and properly notarized affidavit may be submitted with the bid, however, the successful bidder must submit the original affidavit in its original format and without material alteration upon contract execution. Failure to comply will result in the bid submission being rejected as non-responsive. The Parish reserves the right to award bid to the next lowest responsive and responsible bidder in this event.
15. **NON PUBLIC WORK BIDS - Completed, Signed and Properly Notarized Affidavits Required** in conformity with the provisions contained in LSA – RS 38:2224 and Sec 2-923.1 of the Jefferson Parish Code of Ordinances. For bidding purposes, all bidders must submit with bid submission COMPLETED, SIGNED and PROPERLY NOTARIZED Affidavits, including: Non-Collusion Affidavit, Debt Disclosures Affidavit and Campaign Contribution Affidavit. For the convenience of vendors, all affidavits have been combined into one form entitled NON PUBLIC WORKS BID AFFIDAVIT. This affidavit must be submitted in its original format, and without material alteration, in order to be compliant and for the bid to be considered responsive. A scanned copy of the completed, signed and properly notarized affidavit may be submitted with the bid, however, the successful bidder must submit the original affidavit in its original format and without material alteration upon contract execution. Failure to comply will result in the bid submission being rejected as non-responsive. The Parish reserves the right to award bid to the next lowest responsive and responsible bidder in this event.
16. The ensuing contract for this bid solicitation may be eligible for FEMA reimbursement and/or Federal funding/reimbursement. As such, the referenced appendix will be applicable accordingly and shall be considered a part of the bid documents. All applicable certifications must be duly completed, signed and submitted with bid submission. Failure to submit applicable certifications with bid submission will result in bid rejection.

It shall be the duty of every parish officer, employee, department, agency, special district, board, and commission: and the duty of every contractor, subcontractor, and licensee of the parish, and the duty of every applicant for certification of eligibility for a parish contract or program, to cooperate with the Inspector General in any investigation, audit, inspection, performance review, or hearing pursuant to Jefferson Parish Code of Ordinances Section 2-155.10(19). By submitting a bid, vendor acknowledges this and will abide by all provisions of the referenced Jefferson Parish Code of Ordinances.

DATE: 1/20/2017

INVITATION TO BID
THIS IS NOT AN ORDER

Page: 4

BID NO.: 50-00118761

JEFFERSON PARISH
PURCHASING DEPARTMENT
P.O. BOX 9
GRETN, LA. 70054-0009
504-364-2678

VENDOR: Wastequip Manufacturing Company, LLC

BUYER: DREAMEY

As per LSA-RS 47:301 et seq., all governmental bodies are excluded from payment of sales taxes to any Louisiana taxing body. Quotations shall be based on F.O.B. Agency warehouse or jobsite, anywhere within the Parish as designated by the Purchasing Department.

JEFFERSON PARISH reserves the right to cancel all or any part of an order if not shipped promptly. No charges will be allowed for parking or cartage unless specified in quotation. The order must not be filled at a higher price than quoted. JEFFERSON PARISH reserves the right to cancel at any time and for any reason by issuing a THIRTY (30) day written notice to the contractor.

JEFFERSON PARISH is expecting all products to be new and all work is to be done in a workman-like manner, according to standard practices. Any deviations or alterations from the specifications must be indicated and backup documentation supplied with your quotation.

DELIVERY: FOB JEFFERSON PARISH

INDICATE DELIVERY DATE ON EQUIPMENT AND SUPPLIES	<u>30-45 Days ARO</u>
INDICATE STARTING TIME (IN DAYS) FOR CONSTRUCTION WORK	<u>Not Applicable</u>
INDICATE COMPLETION TIME (IN DAYS) FOR CONSTRUCTION WORK	<u>Not Applicable</u>

In the event that addenda are issued with this bid, bidders MUST acknowledge all addenda on the bid form. Bidder must acknowledge receipt of an addendum on the bid form as indicated. Failure to acknowledge any addendum on the bid form will result in bid rejection.

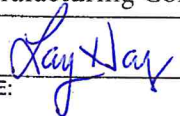
Acknowledge Receipt of Addenda: NUMBER: None 1-23-17

NUMBER: _____

NUMBER: _____

NUMBER: _____

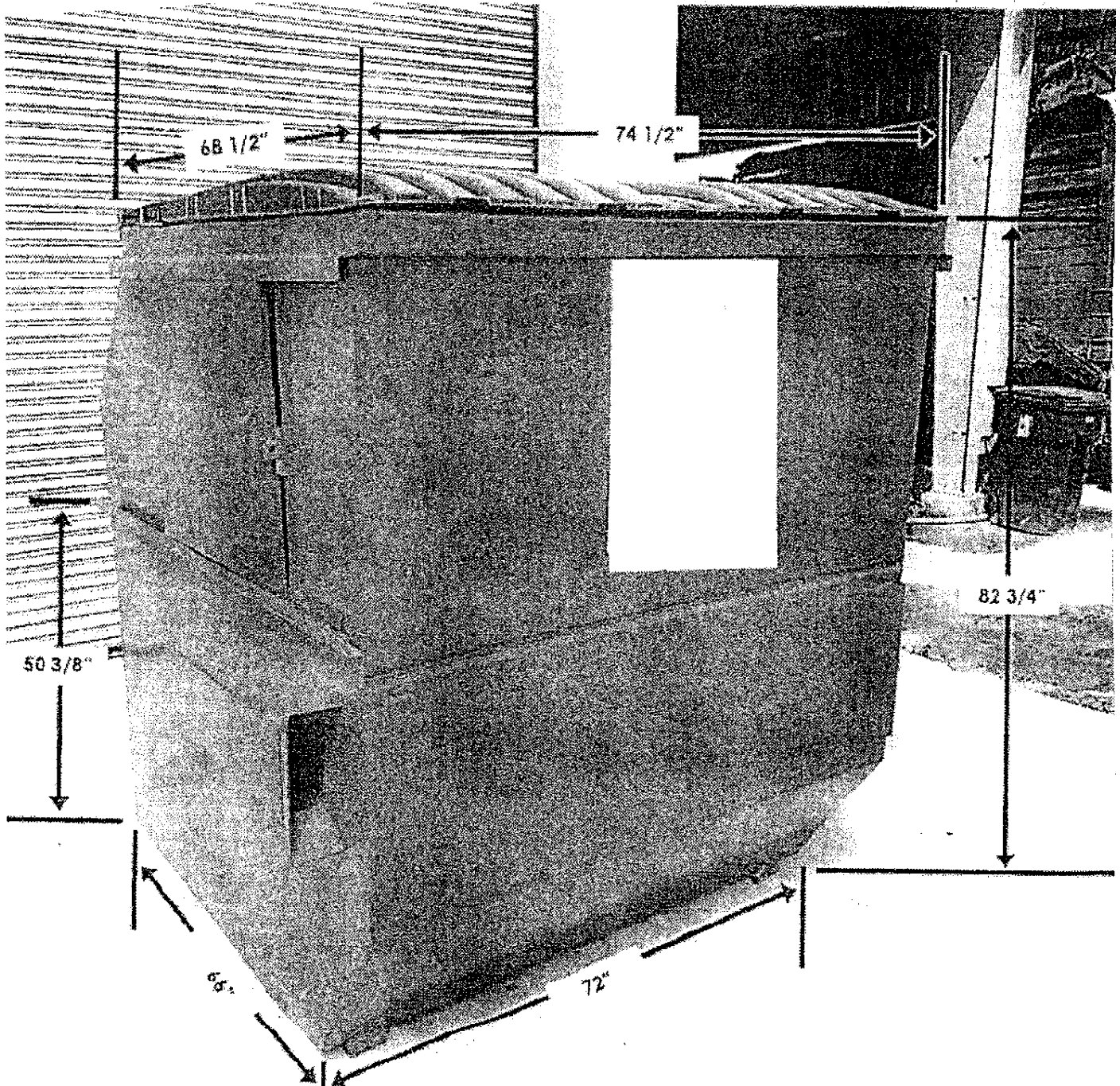
LOUISIANA CONTRACTOR'S LICENSE NO.: (if applicable) Not Applicable

*** ALL BIDDERS MUST COMPLETE SECTION BELOW ***	
FIRM NAME: Wastequip Manufacturing Company, LLC	
SIGNATURE: (Must be signed here) 	TITLE: VP-Finance
PRINT OR TYPE NAME: Larry Harvey	
ADDRESS: 841 Meacham Road	
CITY, STATE: Statesville NC	ZIP: 28677
TELEPHONE: (800) 424-0422 Ext 244	FAX: (704) 878-0734
EMAIL ADDRESS: MJenkins@wastequip.com	

TOTAL PRICE OF ALL BID ITEMS: \$ 3,825.00 please see Bid Page for pricing notes

Dumpsters for the East Bank Water Treatment Plant

This shall be for 4 dumpsters. Two (2) six yard flat dumpsters and two (2) eight yard flat dumpsters. The dumpsters shall be equivalent to the flat dumpster listed below, and shall have doors on each side.



DATE: 1/20/2017

Page: 5

INVITATION TO BID FROM JEFFERSON PARISH - continued

BID NO.: 50-00118761

SEALED BID

ITEM NUMBER	QUANTITY	U/M	DESCRIPTION OF ARTICLES	UNIT PRICE QUOTED	TOTALS
			ONE TIME PURCHASE:		
1	2.00	EA	0010 6 YARD FLAT DUMPSTER WQ # 125536	\$903.75	\$1,807.50
2	2.00	EA	0020 8 YARD FLAT DUMPSTER WQ # 125537	\$1,008.75	\$2,017.50
			LOCATION: JEFFERSON PARISH EB WATER PLANT 3600 JEFFERSON HWY., BLDG. D JEFFERSON, LA 70121	Total	\$3,825.00**
				Please Note: Unit prices include freight charges. Pricing does not includes sales tax. Wastequip is bidding our standard flat top containers. Please see attached brochure for dimensions and full product details. Customer is responsible for offloading product at time of delivery. Forklift is recommended.	



JEFFERSON PARISH

Department of Purchasing

Michael S. Yenni
Parish President

Brenda J. Campos
Director

CHANGES TO JEFFERSON PARISH BIDDING PROCEDURES

The East bank Office of Purchasing is now open! We are located in the Joseph S. Yenni Building, 1221 Elmwood Park Blvd., Suite 404, Jefferson, LA 70123. Bidders may submit bid responses at this location, pending authorization in each bid package. **Bidders should carefully read and must respond accordingly per the requirements of the bid packages. NOTE: Bidders submitting bids on the day of bid opening, bidders must submit at the West Bank location only.**

Other Changes Continued:

- Effective June 1, 2017, bidders may no longer send bid responses via facsimile, as some bid solicitations may provide. Vendors responding to bid solicitations may only submit via USPS, courier service, hand delivery or via online by registering free of charge at www.jeffparishbids.net. For more information, please contact the Purchasing Department or visit jeffparish.net.
- Affidavits (Non-Public Works Affidavit or Public Works Affidavit) – as you are aware, bidders are required to submit affidavits pursuant to LA public bid law and Jefferson Parish Code of Ordinances. Bidders must read each bid package to ensure compliance. Effective August 1, 2016, ***affidavits are required with bid submission***. While copies are acceptable to include with bid submission, original affidavits are required upon contract execution. Original affidavits are encouraged with bid submission.
- Current W9 Forms and vendor applications may be submitted at any time; however, if your company is not registered and/or a current W-9 form is not on file, a current W-9 form must be supplied upon contract execution, should you be awarded a contract and/or issued a purchase order.
- Upon contract execution, successful bidder must continue producing final insurance certificates per standard Jefferson Parish insurance requirements. Proof of insurance is required for bidding purposes. Bidders must read the insurance requirements attachment included in each bid package for specific instructions.

Bidders should reference the "Additional Requirements" section of the bid instructions and/or the "Important Notice to Bidders" included in the bid package for specific requirements to respond accordingly.

For more information, please call Jefferson Parish Purchasing at 504-364-2678.

Public Works Bid Affidavit Instructions

- **Affidavit is supplied as a courtesy to Affiants, but it is the responsibility of the affiant to insure the affidavit they submit to Jefferson Parish complies, in both form and content, with federal, state and parish laws.**
- **Affidavit must be signed by an authorized representative of the entity or the affidavit will not be accepted.**
- **Affidavit must be notarized or the affidavit will not be accepted.**
- **Notary must sign name, print name, and include bar/notary number, or the affidavit will not be accepted.**
- **Affiant MUST select either A or B when required or the affidavit will not be accepted.**
- **Affiants who select choice A must include an attachment or the affidavit will not be accepted.**
- **If both choice A and B are selected, the affidavit will not be accepted.**
- **Affidavit marked N/A will not be accepted.**
- **It is the responsibility of the Affiant to submit a new affidavit if any additional campaign contributions are made after the affidavit is executed but prior to the time the council acts on the matter.**

Instruction sheet may be omitted when submitting the affidavit

Public Works Bid

AFFIDAVIT

STATE OF North Carolina

PARISH/COUNTY OF Iredell

BEFORE ME, the undersigned authority, personally came and appeared: Larry Harvey, II
_____, (Affiant) who after being by me duly sworn, deposed and said that
he/she is the fully authorized Vp-Finance of Wastequip Mfg. Co., LLC (Entity),
the party who submitted a bid in response to Bid Number 50-00118761, to the Parish of
Jefferson.

Affiant further said:

Campaign Contribution Disclosures

(Choose A or B, if option A is indicated please include the required attachment):

Choice A _____ Attached hereto is a list of all campaign contributions, including the date and amount of each contribution, made to current or former elected officials of the Parish of Jefferson by Entity, Affiant, and/or officers, directors and owners, including employees, owning 25% or more of the Entity during the two-year period immediately preceding the date of this affidavit or the current term of the elected official, whichever is greater. Further, Entity, Affiant, and/or Entity Owners have not made any contributions to or in support of current or former members of the Jefferson Parish Council or the Jefferson Parish President through or in the name of another person or legal entity, either directly or indirectly.

Choice B X there are **NO** campaign contributions made which would require disclosure under Choice A of this section.

Affiant further said:

Debt Disclosures

(Choose A or B, if option A is indicated please include the required attachment):

Choice A _____ Attached hereto is a list of all debts owed by the affiant to any elected or appointed official of the Parish of Jefferson, and any and all debts owed by any elected or appointed official of the parish to the Affiant.

Choice B _____ There are **NO** debts which would require disclosure under Choice A of this section.

Affiant further said:

That Affiant has employed no person, corporation, firm, association, or other organization, either directly or indirectly, to secure the public contract under which he received payment, other than persons regularly employed by the Affiant whose services in connection with the construction, alteration or demolition of the public building or project or in securing the public contract were in the regular course of their duties for Affiant; and

That no part of the contract price received by Affiant was paid or will be paid to any person, corporation, firm, association, or other organization for soliciting the contract, other than the payment of their normal compensation to persons regularly employed by the Affiant whose services in connection with the construction, alteration or demolition of the public building or project were in the regular course of their duties for Affiant.

Affiant further said:

Affiant personally has not been convicted of, nor has he/she entered into a plea of guilty or nolo contendere to any of the crimes or equivalent federal crimes listed below. No individual partner, incorporator, director, manager, officer, organizer, or member, who has a minimum of a ten percent ownership in the Bidding Entity, has been convicted of, or has entered a plea of guilty or nolo contendere to any of the crimes or equivalent federal crimes listed below. A conviction of or plea of guilty or nolo contendere to the following state crimes or equivalent federal crimes shall permanently bar any person or the bidding entity from bidding on public projects:

- (a) Public bribery (R.S. 14:118)
- (b) Corrupt influencing (R.S. 14:120)
- (c) Extortion (R.S. 14:66)
- (d) Money laundering (R.S. 14:230)

A conviction of or plea of guilty or nolo contendere to the following state crimes or equivalent federal crimes shall bar any person or the bidding entity from bidding on public projects for a period of five years from the date of conviction or from the date of the entrance of the plea of guilty or nolo contendere:

- (a) Theft (R.S. 14:67)
- (b) Identity Theft (R.S. 14:67, 16)
- (c) Theft of a business record (R.S. 14:67.20)
- (d) False accounting (R.S. 14:70)
- (e) Issuing worthless checks (R.S. 14:71)
- (f) Bank fraud (R.S. 14:71.1)
- (g) Forgery (R.S. 14:72)
- (h) Contractors; misapplication of payments (R.S. 14:202)
- (i) Malfeasance in office (R.S. 14:134)

The five-year prohibition provided for in this section shall apply only if the crime was committed during the solicitation or execution of a contract or bid awarded pursuant to these provisions. If evidence is submitted substantiating that a false attestation has been made and the project must be readvertised or the contract cancelled, the awarded entity making the false attestation shall be responsible to the public entity for the costs of rebidding, additional costs due to increased costs of bids and any and all delay costs due to the rebid or cancellation of this project.

[The remainder of this page is intentionally left blank.]

Affiant further said:

- (1) Entity is registered and participates in a status verification system to verify that all employees in the State of Louisiana are legal citizens of the United States or are legal aliens.
- (2) Entity shall continue, during the term of the contract, to utilize a status verification system to verify the legal status of all new employees in the State of Louisiana.
- (3) Entity shall require all subcontractors to submit to the Entity a sworn affidavit verifying compliance with statements (1) and (2).



Signature of Affiant

Larry Harvey, VP-Finance

Printed Name of Affiant

SWORN AND SUBSCRIBED TO BEFORE ME

ON THE 23 DAY OF January, 2017.



Notary Public

Marya M. Jenkins

Printed Name of Notary

Not Applicable

Notary/Bar Roll Number



My commission expires 06-16-21.



1261 W. Industrial Park Rd. NW, Brookhaven,
MS, 39601

PHONE: 601-835-0922 FAX: 601-835-5036

WQ-10033725

Sell To:

Contact Name	Brenda Campos	Ship To Name	Jefferson Parish
Bill To Name	Jefferson Parish	Ship To	200 Derbigny St Fl 4
Bill To	200 Derbigny St Fl 4 Gretna, LA 70053-5850 United States		Gretna, LA 70053-5850 United States
Email	bcampos@jeffparish.net	Customer Job Reference	50-00118761
Phone	(504) 364-2681		

Quote Information

Salesperson	Steve Hurtt	Created Date	1/24/2017
Salesperson Email	shurtt@wastequip.com	Expiration Date	2/6/2017
Salesperson Phone	(469) 853-7729	Quote Number	WQ-10033725
			Please Reference Quote Number on all Purchase Orders

Model	Product Description	Selected Option	Quantity	Sales Price	Total Price
125536	6 Cubic Yard Standard Duty Flat Front Load Container - Floor: 10 gauge, Walls: 12 gauge with Horizontal V-Crimps for Added Strength, Doors: (2) 30"x 30" Sliding, Pockets: Heavy Duty with Three Way Fork Entry Guide, Top Channels: Interlocking, Bottom Runners: 2 1/2" Tall Formed, Primed and Painted Any Standard Color	Color: TBD-Standard Color	2.00	\$760.00	\$1,520.00
125537	8 Cubic Yard Standard Duty Flat Front Load Container - Floor: 10 gauge, Walls: 12 gauge with Horizontal V-Crimps for Added Strength, Doors: (2) 30"x 30" Sliding, Pockets: Heavy Duty with Three Way Fork Entry Guide, Top Channels: Interlocking, Bottom Runners: 2 1/2" Tall Formed, Primed and Painted Any Standard Color	Color: TBD	2.00	\$865.00	\$1,730.00

Payment Terms	Net 30 Days if credit has been established	Subtotal	\$3,250.00
Shipping Terms	FOB Origin	Shipping and Handling	\$575.00
		Tax	\$0.00
		Grand Total	\$3,825.00

Special Instructions

Special Instructions Customer to Offload at time of delivery. Forklift recommended for offloading.

Additional Information

Additional Terms Our quote is a good faith estimate, based on our understanding of your needs. Subject to our acceptance, your Order is an offer to purchase our Products and services in accordance with the Wastequip Terms and Conditions, including our limited warranties, the terms of which are incorporated herein by reference, which constitutes the entire agreement between the parties. The Wastequip Terms and Conditions are available on our website at: <http://www.wastequip.com/terms-conditions.cfm>

Pricing is based on your anticipated Order, including product specifications, quantities and timing - any differences to your order may result in different pricing. Due to volatility in petrochemical, steel and related product material markets, actual prices, as well as freight, are subject to change and will be confirmed prior to acceptance of an Order. Unless otherwise stated, materials and container sizes indicated on sales literature, invoices, price lists, quotations and delivery tickets are nominal sizes and representations - actual volume, Products and materials are subject to manufacturing and commercial variations and Wastequip's practices, and may vary from nominal sizes and materials. All prices are in US dollars; this



1261 W. Industrial Park Rd. NW, Brookhaven,
MS, 39601

PHONE: 601-835-0922 FAX: 601-835-5036

WQ-10033725

quotation may not include all applicable taxes, brokerage fees or duties.

Wastequip, Toter, Galbreath, Cusco, Accurate, Mountain Tarp, Pioneer, and Parts Place are registered trademarks, trade names and subsidiaries of Wastequip, LLC.

Additional
Information

Due to extremely volatile petrochemical and steel markets, actual prices and freight are subject to change and must be confirmed before acceptance of an order. Above pricing is based on orders placed in the quantities stated above. Orders placed for other than these quantities may be subject to additional freight and cost. Unless otherwise stated, container sizes indicated on sales literature, invoices, price lists, quotations and delivery tickets are nominal sizes. Actual volume may vary from nominal sizes. This proposal is subject to Wastequip/Toter standard terms and conditions. Quotation does not include any applicable taxes other than those specifically listed on this document.

Special Contract
Information

Please reference the quote number on your purchase order.

Signatures

Accepted By: _____

Company Name: _____

Date: _____

Purchase Order: _____

Please Reference Quote Number on all Purchase Orders

FRONT END LOAD (FEL) CONTAINERS



STEEL FEL CONTAINERS

Wastequip's **Front End Load Containers (FELs)** are engineered using heavy-gauge steel to withstand the stress of continued use. Standard models feature **12 gauge sides, 10 gauge bottoms, high-density polyethylene lids, and fully welded in-seams.**

Our heavy-duty models have 10 gauge sides and 7 gauge bottoms for added strength and durability.

Containers are primed inside and outside to reduce corrosion. Wastequip containers meet ANSI safety specifications and dimensional standards for haulers. With locations throughout North America, Wastequip can meet all your container needs quickly.



Available Styles:

Flat, Slant, Hatchback, and Nestable (Slant and Flat)
(Specialty and Regional Styles also Available)

Sizes Available:

2-, 3-, 4-, 6-, 8-, and 10-cubic-yards

FEATURES & BENEFITS

1 FORK POCKETS:

- 3-way flared fork pockets protect from damage by truck forks, and easily guides forks into pockets.
- Taco gussets welded to bottom of fork pockets help extend pocket life by providing added strength to bottom of pockets.
- Fully welded pockets at critical stress points reduce fork damage and ensure long service life.

2 CONSTRUCTION:

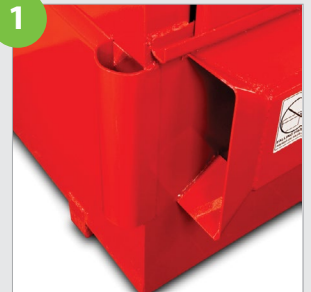
- Rounded bumper pads help prevent damage to front of container.
- Floor channels are capped at both ends to prevent debris from getting inside, and extend up the front and back walls to create extra support.
- Fully welded, no-step gusset across top of fork pocket provides added safety and support.

CONSTRUCTION (CONT'D):

- Top edges are rounded and smooth for added safety during loading.
- Interlocking top channel frame provides added strength.
- Primed inside and outside to reduce corrosion.
- Available in multiple standard colors.
- Nestable 2-, 3- and 4-yard containers reduce shipping costs and required storage space.

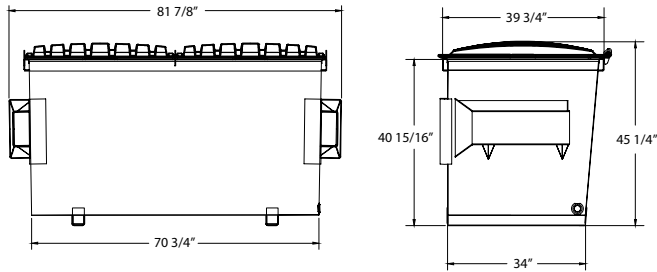
3 LIDS:

- Single-wall, double-lip lids ensure durability.
- Optional lids available upon request.

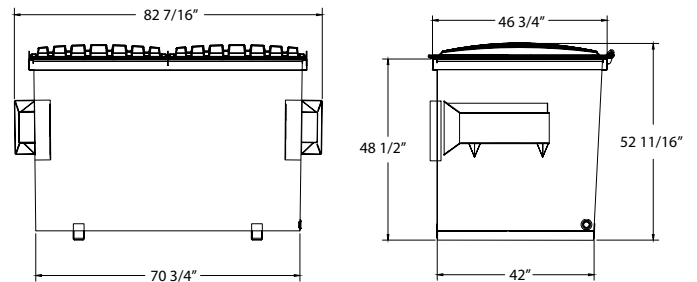


FLAT-TOP FEL CONTAINERS

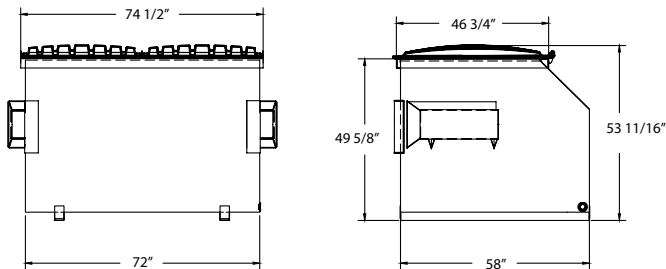
2-YARD FLAT (NESTABLE)



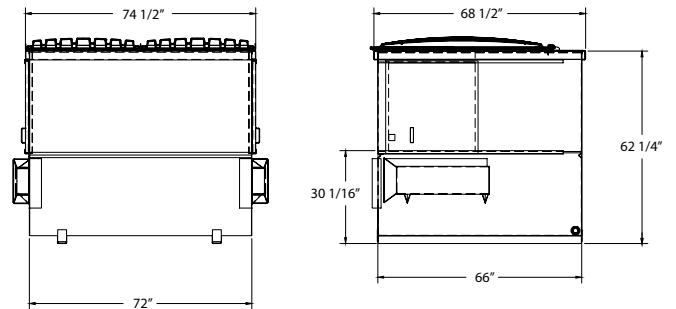
3-YARD FLAT (NESTABLE)



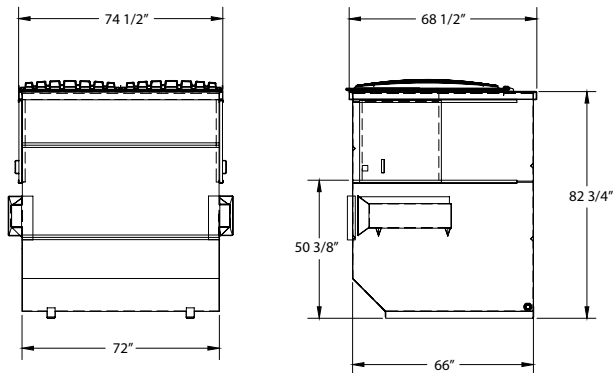
4-YARD FLAT



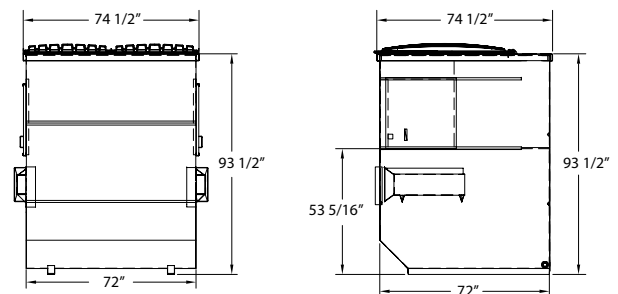
6-YARD FLAT



8-YARD FLAT



10-YARD FLAT

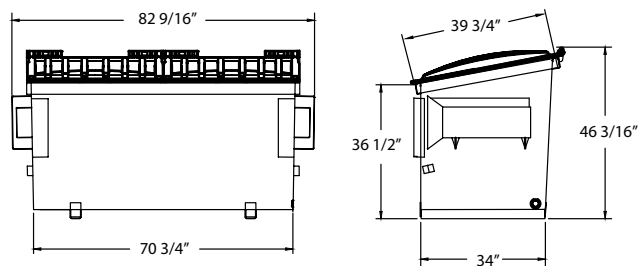


	2-YARD*	3-YARD*	4-YARD	6-YARD	8-YARD	10-YARD
48-foot Trailer (Flat / Drop)	42 / 52	28 / 36	18 / 18	8 / 14	8 / 8	7 / 7
53-foot Trailer (Flat / Drop)	45 / 57	32 / 42	20 / 20	9 / 16	9 / 9	8 / 8
Plastic Lid Standard	37" x 41" Single Wall	37" x 48" Single Wall	37" x 48" Single Wall	37" x 58" Single Wall	37" x 58" Single Wall	37" x 58" Single Wall
Sides	12 gauge	12 gauge	12 gauge	12 gauge	12 gauge	12 gauge
Bottom	10 gauge	10 gauge	10 gauge	10 gauge	10 gauge	10 gauge
Weight	505 lbs.	602 lbs.	732 lbs.	971 lbs.	1,110 lbs.	1,543 lbs.

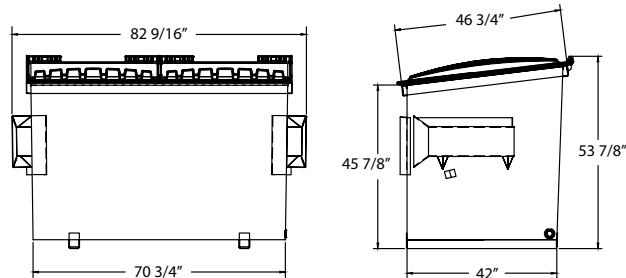
* Nestable

SLANT-TOP FEL CONTAINERS

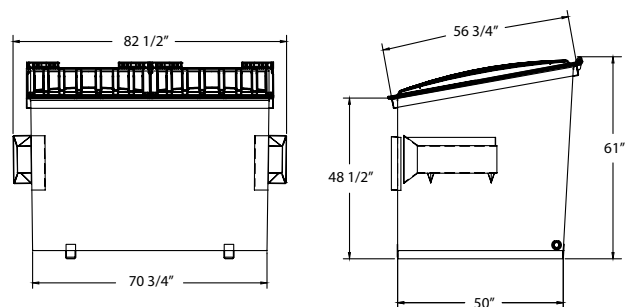
2-YARD SLANT (NESTABLE)



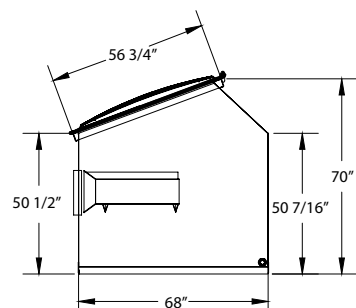
3-YARD SLANT (NESTABLE)



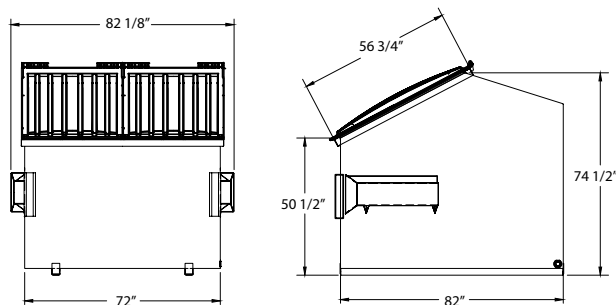
4-YARD SLANT (NESTABLE)



6-YARD SLANT



8-YARD SLANT



	2-YARD*	3-YARD*	4-YARD*	6-YARD	8-YARD
48-foot Trailer (Flat / Drop)	42 / 52	24 / 33	20 / 28	8 / 14	7 / 7
53-foot Trailer (Flat / Drop)	48 / 60	26 / 36	22 / 31	9 / 16	8 / 8
Plastic Lid Standard	37" x 41" Single Wall	37" x 48" Single Wall	37" x 58" Single Wall	37" x 58" Single Wall	37" x 58" Single Wall
Sides	12 gauge	12 gauge	12 gauge	12 gauge	12 gauge
Bottom	10 gauge	10 gauge	10 gauge	10 gauge	10 gauge
Weight	504 lbs.	608 lbs.	709 lbs.	900 lbs.	1,103 lbs.

*Nestable



Tel: 877.468.9278 | sales@wastequip.com | www.wastequip.com

Wastequip is the leading North American manufacturer of waste and recycling equipment for collecting, processing, and transporting recyclables and solid or liquid waste.

© Wastequip, all rights reserved. Specifications subject to improvement without notice. Equipment displayed should be operated by properly trained personnel. Operators should become familiar with OSHA, ANSI and any other applicable standards or laws for using this equipment. Improper use, misuse, or lack of maintenance could cause injury to people and/or property. Photos used in the literature are illustrative only. Wastequip assumes no liability or responsibility for proper training/operation of equipment not manufactured by Wastequip. We reserve the right to make changes at any time without notice. Information contained within this literature is intended to be the most accurate available at time of printing.

WQP034-042016



CONTAINER LIMITED WARRANTY

WASTEQUIP warrants all other products of its manufacture against operational failure caused by defective material or workmanship, **which occurs during normal use within twelve (12) months from date of shipment from our factory.**

WASTEQUIP will replace all parts of our manufacture free of charge that our inspection at our factory shows to us to be defective in accordance with the above paragraph. **Written permission must be obtained from authorized Wastequip personnel for any repairs performed other than in our factory.** All claims for reimbursement must be filed with proper documentation no later than forty-five (45) days after occurrence to be allowed.

All products purchased by WASTEQUIP from an outside vendor shall be covered by the warranty of that respective vendor only, and WASTEQUIP does not participate in or obligate itself to any such warranty.

No freight, travel cost, meals, lodging, or loss of hydraulic oil shall be covered by this warranty, all labor costs allowed shall be in accordance with WASTEQUIP'S established rate; in case of alleged defect, product shall be returned to WASTEQUIP with transportation charges prepaid. No freight collect shipment will be accepted.

WASTEQUIP makes no warranty on any of its equipment used in any way except as it was designed, intended, and sold to perform.

DISCLAIMER OF WARRANTIES: THE LIMITED AND CONDITIONAL WARRANTY AND REMEDIES SET FORTH ABOVE ARE EXCLUSIVE AND IN LIEU OF ANY AND ALL REPRESENTATIONS, SPECIFICATIONS, WARRANTIES AND REMEDIES, EITHER EXPRESS OR IMPLIED, HEREIN OR ELSEWHERE, OR WHICH MIGHT ARISE UNDER LAW OR EQUITY, OR PURSUANT TO ANY COURSE OF DEALING OR CUSTOM OR USAGE OF TRADE, INCLUDING WITHOUT LIMITATION, ANY WARRANTIES OF MERCHANTABILITY AND OF FITNESS FOR ANY SPECIFIED OR INTENDED PURPOSE.

LIMITATION OF REMEDIES AND LIABILITY: PURCHASER'S SOLE AND EXCLUSIVE REMEDY AGAINST WASTEQUIP SHALL BE THE REMEDY OF DEFECTS IN PRODUCTS DELIVERED HEREUNDER AS PROVIDED BY, AND WITHIN THE TIME PERIOD SPECIFIED IN, WASTEQUIP'S LIMITED WARRANTY SET FORTH ABOVE. WASTEQUIP'S LIMITED WARRANTY CONSTITUTES THE SOLE REMEDY WITH RESPECT TO OR ARISING OUT OF THE EQUIPMENT, PRODUCTS OR SERVICES OF WASTEQUIP. NOTWITHSTANDING ANY OTHER PROVISIONS HEREOF, IN NO EVENT SHALL WASTEQUIP BE LIABLE IN CONTRACT, TORT OR EQUITY FOR ANY LOSS OF ANTICIPATED PROFITS, LOST SALES, INJURY TO PERSONS OR PROPERTY, LOSS BY REASON OF PLANT SHUTDOWN, NON-OPERATION OR INCREASED EXPENSE OF OPERATION, SERVICE INTERRUPTIONS, CLAIMS OF CUSTOMERS, COST OF MONEY, LOSS OF USE OF CAPITAL OR REVENUE, OR FOR ANY SPECIAL, INCIDENTAL OR CONSEQUENTIAL LOSSES OR DAMAGES OF ANY KIND WHATSOEVER.

All claims shall be processed through the WASTEQUIP Service Department or your authorized WASTEQUIP dealer.