



CENTRALBIDDING
FROM CENTRAL AUCTION HOUSE

**5000118681 STOCK SUPPLIES NEEDED FOR THE JEFFERSON PARISH
EB PUBLIC WORKS WAREHOUSE**
Jefferson Parish Government

Project documents obtained from www.CentralBidding.com

13-Jan-2017 08:17:05 AM

DATE: 1/12/2017

INVITATION TO BID
THIS IS NOT AN ORDER

Page: 1

BID NO.: 50-00118681

JEFFERSON PARISH

PURCHASING DEPARTMENT
P.O. BOX 9
GRETN, LA. 70054-0009
504-364-2678

VENDOR:

BUYER: SFOLSE

Bids will be received until 11:00 AM, 1/18/2017 via fax: 504-364-2693 or via online at www.jeffparish.net

All bids submitted are subject to these instructions and general conditions and any special conditions and specifications contained herein, all of which are made part of this bid proposal reference. By submitting a bid, vendor agrees to comply with all provisions of Louisiana Law, as well be in compliance with the Jefferson Parish Code of Ordinances, Louisiana Code of Ethics, applicable Jefferson Parish ethical standards and Jefferson Parish Resolution No. 113646 and/or Resolution No. 113647. A copy of these resolutions may be obtained from the Office of the Parish Clerk, Suite 6700, Jefferson Parish General Government Building, 200 Derbigny Street, Gretna, LA 70053. You may also obtain a copy by visiting the Purchasing Department webpage at purchasing.jeffparish.net and clicking on On-line forms.

All vendors submitting bids should register as a Jefferson Parish vendor if not already yet registered. Registration forms may be downloaded from <http://purchasing.jeffparish.net> and by clicking on Vendor Information. Current W-9 forms with respective Tax Identification numbers and vendor applications may be submitted at any time; however, if your company is not registered and/or a current W-9 form is not on file, vendor registration is mandatory. Further, a current W-9 form and respective Tax Identification number must be supplied upon contract execution, should you be awarded a contract and/or issued purchase order. Failure to do so may result in delay of payment.

As per LSA-RS 47:301 et seq., all governmental bodies are excluded from payment of sales taxes to any Louisiana taxing body. Quotations shall be based on F.O.B. Delivered, anywhere within the Parish as designated by the Purchasing Department. JEFFERSON PARISH WILL ACCEPT ONE BID ONLY FROM EACH VENDOR. Items bid must meet specifications. JEFFERSON PARISH will accept one price for each item unless otherwise indicated. Two or more prices for one item will result in bid rejection. Bidders are required to complete, sign and return the bid form and/or complete and return the associated line item pricing forms as indicated. The price quoted for work shall be stated in figures. In the event there is a difference in unit prices and totals, the unit prices shall prevail.

JEFFERSON PARISH reserves the right to award contracts or place orders on a lump sum or individual item basis, or such combination, as shall in its judgment be in the best interest of JEFFERSON PARISH. Every contract or order shall be awarded to the LOWEST RESPONSIVE and RESPONSIBLE BIDDER, taking into consideration the CONFORMITY WITH THE SPECIFICATIONS and the DELIVERY AND/OR COMPLETION DATE

JEFFERSON PARISH reserves the right to cancel all or any part of an order if not shipped promptly. No charges will be allowed for parking or cartage unless specified in the quotation. The order must not be filled at a higher price than quoted. JEFFERSON PARISH reserves the right to cancel at any time and for any reason by issuing a THIRTY (30) day written notice to the contractor.

JEFFERSON PARISH requires all products to be new (current) and all work must be performed according to standard practices for the project. Unless otherwise specified, no aftermarket parts will be accepted. Unless otherwise specified, all workmanship and materials must have at least one (1) year guaranty, in writing, from the date of delivery and/or acceptance of the project. Any deviations or alterations from the specifications must be indicated and/or supporting documentation supplied with bid submission.

If this bid requires a pre-bid conference (see Additional Requirements section), bidders are advised that such conference will be held to allow bidders the opportunity to identify any discrepancies in the bid specifications and seek further clarification regarding instructions. The Purchasing Department will issue a written response to bidders' questions in the form of an Addendum.

All formal Addenda require written acknowledgment on the bid form by the bidder. Failure to acknowledge an Addendum on the bid form shall cause the bid to be rejected; JEFFERSON PARISH reserves the right to award bid to next lowest responsive and responsible bidder in this event.

USE OF BRAND NAMES AND STOCK NUMBERS: Where brand names and stock numbers are specified, it is for the purpose of establishing certain minimum standards of quality. Bids may be submitted for products of equal quality, provided brand names and stock numbers are specified. Complete product data may be required prior to award.

Quantities listed are for bidding purposes only. Actual requirements may be more or less than quantities listed.

Bidders are not to exclude from participation in, deny the benefits of, or subject to discrimination under any program or activity, any person in the United States on the grounds of race, color, national origin, or sex; nor discriminate on the basis of age under the Age Discrimination Act of 1975, or with respect to an otherwise qualified handicapped individual as provided in Section 504 of the Rehabilitation Act of 1973, or on the basis of religion, except that any exemption from such prohibition against discrimination on the basis of religion as provided in the Civil Rights Act of 1964, or Title VI and VII of the Act of April 11, 1968, shall also apply. This assurance includes compliance with the administrative requirements of the Revenue Sharing final handicapped discrimination provisions contained in Section 51.55 (c), (d), (e), and (k)(5) of the Regulations. New construction or renovation projects must comply with Section 504 of the 1973 Rehabilitation Act, as amended, in accordance with the American National Standard Institute's specifications (ANSI A17.1-1961).

INSTRUCTIONS FOR BIDDERS AND GENERAL CONDITIONS

IN ACCORDANCE WITH STATE REGULATIONS JEFFERSON PARISH OFFERS ELECTRONIC PROCUREMENT TO ALL VENDORS

This electronic procurement system allows vendors the convenience of reviewing and submitting bids online.

This is a secure site and authorized personnel have limited read access only. Bidders are encouraged to submit electronically using this free service; while the website accepts various file types, one single PDF file containing all appropriate and required bid documents is preferred. Bidders submitting uploaded images of bid responses are solely responsible for clarity. If uploaded images/documents are not legible, then bidder's submission will be rejected. Please note all requirements contained in this bid package for electronic bid submission.

Please visit our E-Procurement Page at www.jeffparishbids.net to register and view Jefferson Parish solicitations. For more information, please visit the Purchasing Department page at <http://purchasing.jeffparish.net>.

ADDITIONAL REQUIREMENTS FOR THIS BID

PLEASE MATCH THE NUMBERS PRINTED IN THIS BOX WITH THE CORRESPONDING INSTRUCTIONS BELOW.

13

1. All bidders must attend the MANDATORY pre-bid conference and will be required to sign in and out as evidence of attendance. In accordance with LSA R.S. 38:2212(l), all prospective bidders shall be present at the beginning of the MANDATORY pre-bid conference and shall remain in attendance for the duration of the conference. Any prospective bidder who fails to attend the conference or remain for the duration shall be prohibited from submitting a bid for the project.
2. Attendance to this pre-bid conference is optional. However, failure to attend the pre-bid conference shall not relieve the bidder of responsibility for information discussed at the conference. Furthermore, failure to attend the pre-bid conference and inspection does not relieve the successful bidder from the necessity of furnishing materials or performing any work that may be required to complete the work in accordance with the specification with no additional cost to the owner.
3. Contractor must hold current applicable JEFFERSON PARISH licenses with the Department of Inspection and Code Enforcement. Contractor shall obtain any and all permits required by the JEFFERSON PARISH Department of Inspection and Code Enforcement. The contractor shall be responsible for the payment of these permits. All permits must be obtained prior to the start of the project. Contractor must also hold any and all applicable Federal and State licenses. Contractor shall be responsible for the payment of these permits and shall obtain them prior to the start of the project.
4. A LA State Contractor's License will be required in accordance with LSA R.S. 37-2150 et. seq. and such license number will be shown on the outside of the bid envelope. Failure to comply will cause the bid to be rejected. Additionally if submitting the bid electronically, then the license number must be entered in the appropriate field in the Electronic Procurement system. Failure to comply will cause the bid to be rejected.
5. It is the bidder's responsibility to visit the job site and evaluate the job before submitting a bid.
6. Job site must be clean and free of all litter and debris daily and upon completion of the contract. Passageways must be kept clean and free of material, equipment, and debris at all times. Flammable material must be removed from the job site daily because storage will not be permitted on the premises. Precautions must be exercised at all times to safeguard the welfare of JEFFERSON PARISH and the general public.

INSTRUCTIONS FOR BIDDERS AND GENERAL CONDITIONS

7. **PUBLIC WORKS BIDS:** All awards for public works in excess of \$5,000.00 will be reduced to a formal contract which shall be recorded at the contractor's expense with the Clerk of Court and Ex-Officio Recorder of Mortgages for the Parish of Jefferson. A price list of recordation costs may be obtained from the Clerk of Court and Ex-Officio Recorder of Mortgages for the Parish of Jefferson. All awards in excess of \$25,000.00 will require both a performance and a payment bond. Unless otherwise stated in the bid specifications, the performance bond requirements shall be 100% of the contract price. Unless otherwise state in the bid specifications, the payment bond requirements shall be 100% of the contract price. Both bonds shall be supplied at the signing of the contract.
8. **NON-PUBLIC WORKS BIDS:** A performance bond will be required for this bid. The amount of the bond will be 100% of the contract price unless otherwise indicated in the specifications. The performance bond shall be supplied at the signing of the contract.
9. **NON-PUBLIC WORKS BIDS:** A payment bond will be required for this bid. The amount of the bond will be 100% of the contract price unless otherwise indicated in the specifications. The payment bond shall be supplied at the signing of the contract.
10. Unless otherwise stated in the bid specifications, the successful bidder will be required to procure standard insurance policies evidencing Parish-mandated insurance requirements as indicated on the attached "insurance requirements" sheet. All bidders must comply with the instructions in this sheet. Failure to comply will cause bid to be rejected.
11. A bid bond will be required with bid submission in the amount of 5% of the total bid, unless otherwise stated in the bid specifications. Acceptable forms shall be limited to cashier's check, certified check, or surety bid bond. All sureties must be in original format (no copies). If submitting a bid online, vendors must submit an electronic bid bond through the respective online clearinghouse bond management system(s) as indicated in the electronic bid solicitation on Central Auction House. No scanned paper copies of any bid bond will be accepted as part of the electronic bid submission.
12. This is a requirements contract to be provided on an as needed basis. JEFFERSON PARISH makes no representations on warranties with regard to minimum guaranteed quantities unless otherwise stated in the bid specifications.
13. Freight charges should be included in total cost when quoting. If not quoted FOB DELIVERED, freight must be quoted as a separate item. Bid may be rejected if not quoted FOB DELIVERED or if freight charges are not indicated on bid form.
14. **PUBLIC WORKS BIDS - Completed, Signed and Properly Notarized Affidavits Required;** This applies to all solicitations for construction, alteration or demolition of public buildings or projects, in conformity with the provisions contained in LSA-RS 38:2212.9, LSA-RS 38:2212.10, LSA-RS 38:2224, and Sec 2-923.1 of the Jefferson Parish Code of Ordinances. For bidding purposes, all bidders must submit with bid submission COMPLETED, SIGNED and PROPERLY NOTARIZED Affidavits, including: Non-Conviction Affidavit, Non-Collusion Affidavit, Campaign Contribution Affidavit, Debt Disclosures Affidavit and E-Verify Affidavit. For the convenience of vendors, all affidavits have been combined into one form entitled PUBLIC WORKS BID AFFIDAVIT. This affidavit must be submitted in its original format, and without material alteration, in order to be compliant and for the bid to be considered responsive. A scanned copy of the completed, signed and properly notarized affidavit may be submitted with the bid, however, the successful bidder must submit the original affidavit in its original format and without material alteration upon contract execution. Failure to comply will result in the bid submission being rejected as non-responsive. The Parish reserves the right to award bid to the next lowest responsive and responsible bidder in this event.
15. **NON PUBLIC WORK BIDS - Completed, Signed and Properly Notarized Affidavits Required** in conformity with the provisions contained in LSA – RS 38:2224 and Sec 2-923.1 of the Jefferson Parish Code of Ordinances. For bidding purposes, all bidders must submit with bid submission COMPLETED, SIGNED and PROPERLY NOTARIZED Affidavits, including: Non-Collusion Affidavit, Debt Disclosures Affidavit and Campaign Contribution Affidavit. For the convenience of vendors, all affidavits have been combined into one form entitled NON PUBLIC WORKS BID AFFIDAVIT. This affidavit must be submitted in its original format, and without material alteration, in order to be compliant and for the bid to be considered responsive. A scanned copy of the completed, signed and properly notarized affidavit may be submitted with the bid, however, the successful bidder must submit the original affidavit in its original format and without material alteration upon contract execution. Failure to comply will result in the bid submission being rejected as non-responsive. The Parish reserves the right to award bid to the next lowest responsive and responsible bidder in this event.
16. The ensuing contract for this bid solicitation may be eligible for FEMA reimbursement and/or Federal funding/reimbursement. As such, the referenced appendix will be applicable accordingly and shall be considered a part of the bid documents. All applicable certifications must be duly completed, signed and submitted with bid submission. Failure to submit applicable certifications with bid submission will result in bid rejection.

It shall be the duty of every parish officer, employee, department, agency, special district, board, and commission: and the duty of every contractor, subcontractor, and licensee of the parish, and the duty of every applicant for certification of eligibility for a parish contract or program, to cooperate with the Inspector General in any investigation, audit, inspection, performance review, or hearing pursuant to Jefferson Parish Code of Ordinances Section 2-155.10(19). By submitting a bid, vendor acknowledges this and will abide by all provisions of the referenced Jefferson Parish Code of Ordinances.

DATE: 1/12/2017
BID NO.: 50-00118681

INVITATION TO BID
THIS IS NOT AN ORDER

Page: 4

JEFFERSON PARISH

PURCHASING DEPARTMENT
P.O. BOX 9
GRETN, LA. 70054-0009
504-364-2678

VENDOR: _____

BUYER: SFOLSE

As per LSA-RS 47:301 et seq., all governmental bodies are excluded from payment of sales taxes to any Louisiana taxing body. Quotations shall be based on F.O.B. Agency warehouse or jobsite, anywhere within the Parish as designated by the Purchasing Department.

JEFFERSON PARISH reserves the right to cancel all or any part of an order if not shipped promptly. No charges will be allowed for parking or cartage unless specified in quotation. The order must not be filled at a higher price than quoted. JEFFERSON PARISH reserves the right to cancel at any time and for any reason by issuing a THIRTY (30) day written notice to the contractor.

JEFFERSON PARISH is expecting all products to be new and all work is to be done in a workman-like manner, according to standard practices. Any deviations or alterations from the specifications must be indicated and backup documentation supplied with your quotation.

DELIVERY: FOB JEFFERSON PARISH

INDICATE DELIVERY DATE ON EQUIPMENT AND SUPPLIES

12-DAYS

INDICATE STARTING TIME (IN DAYS) FOR CONSTRUCTION WORK

INDICATE COMPLETION TIME (IN DAYS) FOR CONSTRUCTION WORK

In the event that addenda are issued with this bid, bidders MUST acknowledge all addenda on the bid form. Bidder must acknowledge receipt of an addendum on the bid form as indicated. Failure to acknowledge any addendum on the bid form will result in bid rejection.

Acknowledge Receipt of Addenda: NUMBER: _____

NUMBER: _____

NUMBER: _____

NUMBER: _____

LOUISIANA CONTRACTOR'S LICENSE NO.: (if applicable) _____

*** ALL BIDDERS MUST COMPLETE SECTION BELOW ***	
FIRM NAME: <u>The Reynolds Co.</u>	
SIGNATURE: <u>D Landreneau</u> (Must be signed here)	TITLE: <u>Sale.</u>
PRINT OR TYPE NAME: <u>D LANDRENEAU</u>	
ADDRESS: <u>700 Elmwood Park Blvd Ste A</u>	
CITY, STATE: <u>Hanahan La</u>	ZIP: <u>70123</u>
TELEPHONE: <u>(504) 734-4228</u>	FAX: <u>(504) 734-6212</u>
EMAIL ADDRESS: <u>DPLANDRENEAU@Reynco.com</u>	

TOTAL PRICE OF ALL BID ITEMS: \$ 1,697³⁷

DATE: 1/12/2017

Page: 5

INVITATION TO BID FROM JEFFERSON PARISH - continued

BID NO.: 50-00118681

SEALED BID

ITEM NUMBER	QUANTITY	U/M	DESCRIPTION OF ARTICLES	UNIT PRICE QUOTED	TOTALS
			STOCK SUPPLIES NEEDED FOR THE JEFFERSON PARISH EB PUBLIC WORKS WAREHOUSE		
1	24.00	EA	0010 Relay, 120 Volt AC, IDEC Brand RH4B-ULAC120 <i>sub</i>	\$ 10. ⁶²	\$ 254. ⁸⁸
2	2.00	EA	<i>C3 # GPRM-B4C10-D3</i> 0020 Transformer Dry Type 240/480 VAC PRI 120/240 VAC SEC 3 KVA, 1 PH, 60 HZ, CSA ENCL 3, GE 9T51B13	\$ 266. ⁴⁰	\$ 532. ⁸⁰
3	3.00	EA	0030 SWITCH, PRESSURE ALLEN BRADLEY 836-C5A	\$ 300. ¹¹	\$ 900. ³³
4	12.00	EA	0040 NIPPLE OFFSET <i>sub</i> T & B 1180 <i>ARlington # 6A2</i> To be Delivered to: Eastbank Warehouse 4901 Jefferson Hwy Jefferson, La	78/	936



GENERAL PURPOSE / Miniature Square Base w/Blade Terminals

MINIATURE SQUARE BASE RELAYS w/BLADE TERMINALS

- 4PDT for control circuit application flexibility.
- 10A, 4PDT.
- 1/2HP @ 120V AC, 1/2HP @ 240V AC.
- AC and DC coils.
- Blade terminals (13/64") are interchangeable with other commonly available relays.
- Tape wound coils are marked with the coil voltage for easy identification.
- AgNi contacts, environmentally friendly - cadmium free.
- Small size requiring minimum panel space for lower installed cost.
- Optional indicating lights are color coded, red for AC and green for DC.
- Optional mechanical actuator and indicating light for checking the control circuit operation without energizing the relay and to easily determine the relay status.
- Terminal markings on the relay for easy reference during installation.
- Low coil consumption to minimize transformer and power supply requirements.
- cURus and CE for acceptance in global applications.
- Transparent housing to visually monitor switching operations and contact condition.
- Writable marking label allows for fast and easy circuit identification.
- 100% tested to ensure performance to specification.

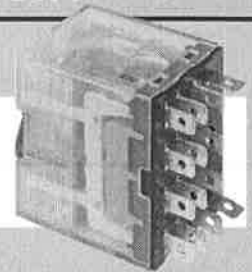
IT'S EASY TO BUILD YOUR OWN RELAY

Simply pick the code number from each of the sections below and combine them to build your part number.

Miniature Square Base Relay w/Blade Terminals

GPRM- B4C10 -

Example: To build one of our most popular Relays, the part number would be GPRM-B + 4C10 + III + IV or GPRM-B4C10ZC-3



I. RELAY TYPE

CODE	DESCRIPTION	PRICE
GPRM-B	General Purpose Relay w/Blade	\$ 16.00

II. POLES & CURRENT RATING

CODE	DESCRIPTION
4C10	4PDT, 10A (14 Blade)

III. COIL VOLTAGES

CODE	DESCRIPTION
C	24V AC
D	120V AC
E	220-240V AC
ZC	24V DC
ZJ	48V DC
ZD	110V DC

IV. ACTUATOR OPTIONS

CODE	DESCRIPTION	PRICE
(Blank)	No Light & Mechanical Actuator	—
3	Light & Mechanical Actuator	\$ 2.00

Relays available in convenient multi-packs, consult factory for details.

NOTE: See page 533 for 1- and 2-Pole Miniature Relays.

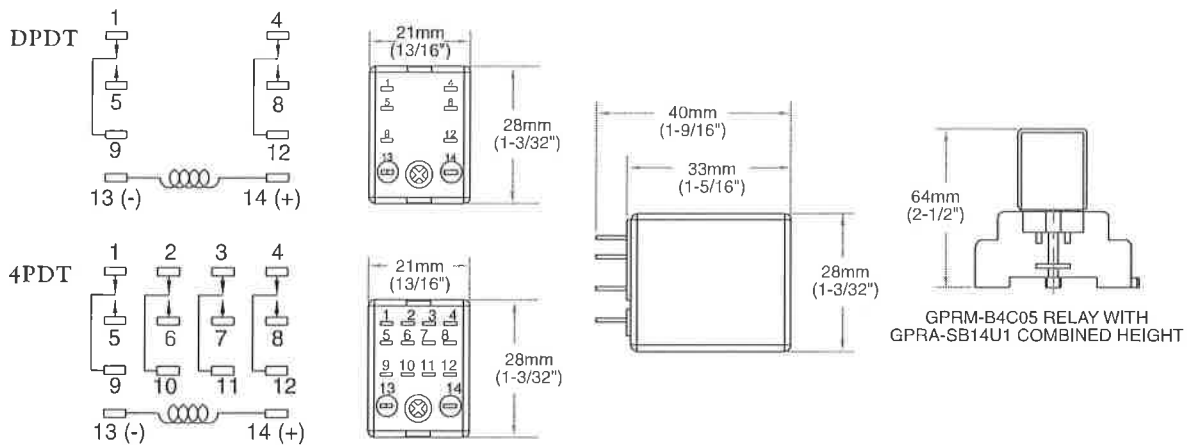
COMPATIBLE SOCKETS

RELAY TYPE	COMPATIBLE SOCKETS
GPRM-B4C10**	GPRA-SB14U2 with Open Style Terminals

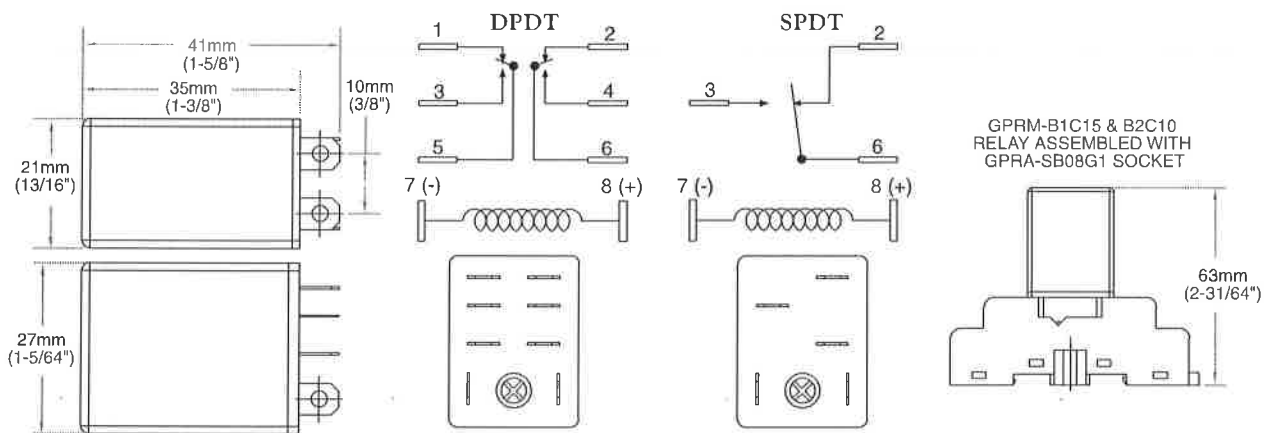
NOTE: **Represents the Coil Voltage Code. Refer to Chart III *Coil Voltage* above.
See page 545 for socket information.

DISCOUNT
SCHEDULE **G**

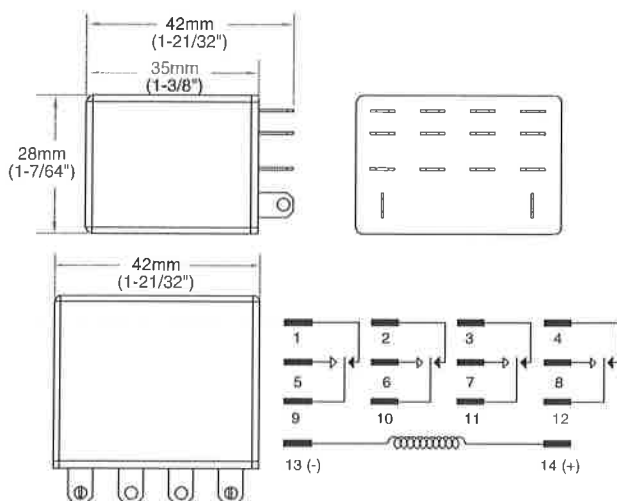
MINIATURE SQUARE BASE RELAYS W/BLADE TERMINALS, 2 & 4 POLES (GPRM-B2C05 & B4C05)



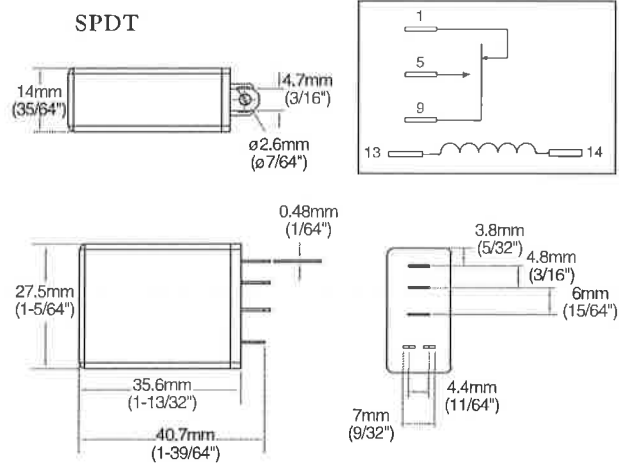
MINIATURE SQUARE BASE RELAYS W/BLADE TERMINALS, 1 & 2 POLES (GPRM-B1C15 & B2C10)



MINIATURE SQUARE BASE RELAYS W/BLADE TERMINALS - 4 POLES (GPRM-B4C10)



MINIATURE SQUARE BASE RELAYS W/BLADE TERMINALS - 1 POLE (GPRM-S1C12)

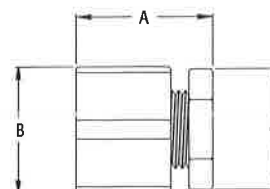


Piece Coupling Rigid • IMC die-cast.



CATALOG NUMBER	UPC/DCI/NAED MFG #018997	TRADE SIZE	STD PKG	DIM A	DIM B	DIM C
200	00200	1/2	50	1.430	1.310	1.250
201	00201	3/4	50	1.520	1.610	1.560
202	00202	1	25	1.700	2.125	2.100
203	00203	1-1/4	25	2.125	2.400	2.415
204	00204	1-1/2	25	2.125	2.890	2.940
205	00205	2	20	2.360	3.400	3.500
206	00206	2-1/2	10	2.520	4.030	4.390
207	00207	3	5	2.580	4.620	4.930
208	00208	3-1/2	5	2.645	5.350	5.425
209	00209	4	2	3.420	5.870	5.780
210†	00210	5	1	4.375	7.000	7.000
211†	00211	6	1	4.375	8.250	8.250

† Malleable.



4" Offset Nipples die-cast.



CATALOG NUMBER	UPC/DCI/NAED MFG #018997	TRADE SIZE	KO SIZE	UNIT PKG	STD PKG	DIM A	DIM B
6A2	61200	1/2	1/2	20	200	2.460	1.000
6A3	61300	3/4	3/4	10	100	2.560	1.220
6A4	61400	1	1	10	100	2.535	1.525
6A5	61500	1-1/4	1-1/4	10	40	2.937	1.910
6A6	61600	1-1/2	1-1/2	10	40	3.080	2.125
6A7	61700	2	2	10	10	3.145	2.665
6A8†	61800	2-1/2	2-1/2	2	2	3.970	3.280
6A9†	61900	3	3	1	1	4.420	3.795
6A10†	64000	3-1/2	3-1/2	1	1	5.000	4.477
6A11†	64002	4	4	1	1	5.000	4.960

† Malleable.

