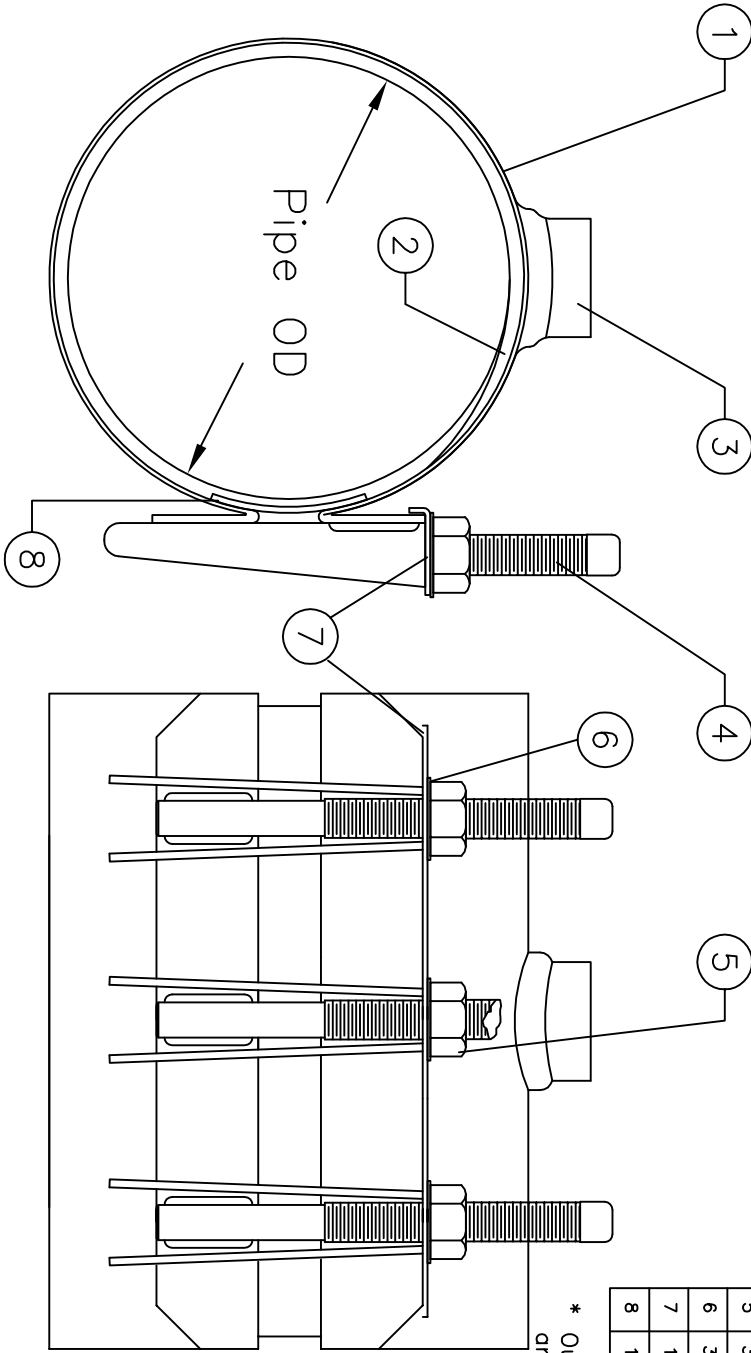


Reference: **3131AS**



* Outlets available in 3/4", 1", 1 1/4, 1 1/2, and 2" IP or CC.

ASSEMBLY BILL OF MATERIALS				
ITEM	QTY	PART NAME	MATERIAL	MAT. SPEC.
1	1	Panel	Type 304 Stainless Steel	ASTM A240
2	1	Gasket	Chek-O-Seal (NBR)	ASTM D2000
3	1	Outlet	Type 304 Stainless Steel	ASTM A240
4	3	Stud Bolt	Type 304 Stainless Steel	ASTM A193
5	3	Heavy Hex Nut	Type 304 Stainless Steel	ASTM A193
6	3	Friction Washer	Delrin Plastic	MIL-A50424
7	1	Washer Bar	Type 304 Stainless Steel	ASTM A240
8	1	Armor Plate	Type 304 Stainless Steel	ASTM A240

THIS DRAWING AND ALL INFORMATION THEREON IS THE PROPERTY OF PAM, LTD. AND SHALL NOT BE USED, COPIED, OR REPRODUCED WITHOUT WRITTEN CONSENT. ALL DESIGN AND INVENTION RIGHTS ARE RESERVED.

TITLE		P.O. Box 2014 Wichita Falls, Texas	
PowerSeal		Model 3131AS	
SIZE	DRAFTSMAN	DATE	APPROVAL
B	EHK	04-16-93	
SCALE	NTS	SUPERSIDES	SHEET 1 OF 1