

DATE: 7/26/2017

Page: 5

BID NO.: 50-00120319

BID FORM
Non Public Works

All Public Work Projects are required to use the Louisiana Uniform Public Work Bid Form

All prices must be held firm unless an escalation provision is requested in this bid. Jefferson Parish will allow one escalation during the term of the contract, which may not exceed the U.S. Bureau of Labor Statistics National Index for all Urban Consumers, unadjusted 12 month figure. The most recently published figure issued at the time an adjustment is requested will be used. A request must be made in writing by the vendor, and the escalation will only be applied to purchases made after the request is made.

Are you requesting an escalation provision?

YES _____ NO ☒

MAXIMUM ESCALATION PERCENTAGE REQUESTED _____ %

INITIAL BID PRICES WILL REMAIN FIRM THROUGH THE DATE OF _____

For the purposes of comparison of bids when an escalation provision is requested, Jefferson Parish will apply the maximum escalation percentage quoted by the bidder to the period to which it is applied in the bid. The initial price and the escalation will be used to calculate the total bid price. It will be assumed, for comparison of prices only, that an equal amount of material or labor is purchased each month throughout the entire contract.

DELIVERY: FOB JEFFERSON PARISH

INDICATE DELIVERY DATE ON EQUIPMENT AND SUPPLIES

3-4 wks

LOUISIANA CONTRACTOR'S LICENSE NO.: (if applicable) _____

THIS SECTION MUST BE COMPLETED BY BIDDER:

FIRM NAME: Cimsco
ADDRESS: 1840 L&A Rd
CITY, STATE: METairie, LA ZIP: 70001
TELEPHONE: (504) 835-7319 FAX: (504) 832-0820
EMAIL ADDRESS: JEFF@Cimscoinc.com

In the event that addenda are issued with this bid, bidders MUST acknowledge all addenda on the bid form. Bidder must acknowledge receipt of an addendum on the bid form as indicated. Failure to acknowledge any addendum on the bid form will result in bid rejection.

Acknowledge Receipt of Addenda: NUMBER: #1 7/31
NUMBER: #2 8/1
NUMBER: #3 8/7
NUMBER: _____

TOTAL PRICE OF ALL BID ITEMS: \$ 49210-

AUTHORIZED SIGNATURE: [Signature]
TITLE: SALES

Jeff DeVincent

Printed Name

SIGNING INDICATES YOU HAVE READ AND COMPLY WITH THE INSTRUCTIONS AND CONDITIONS.

NOTE: All bids should be returned with the BID NUMBER and BID OPENING DATE indicated on the outside of the envelope submitted to the Purchasing Department.

DATE: 7/26/2017

INVITATION TO BID FROM JEFFERSON PARISH - continued

Page 6

BID NO.: 50-00120319

SEALED BID

ITEM NUMBER	QUANTITY	U/M	DESCRIPTION OF ARTICLES	UNIT PRICE QUOTED	TOTALS
1	2.00	EA	<p>A ONE-TIME PURCHASE OF 24 INCH AND 36 INCH PLUG VALVES FOR THE JEFFERSON PARISH DEPARTMENT OF SEWERAGE</p> <p>0001 - Valve, plug, 24 inch x 42 inch face to face, ANSI 125 flanged, eccentric, cast iron body, solid ductile iron plug with nitrile elastomer coating, 100 percent port, nickel seat Item no. NS24FPV</p> <p>WITH ABOVE GROUND GEAR WITH INDICATOR AND HAND WHEEL. ALSO WITH UNATTACHED OPERATING NUT</p>	11500 ⁻	23000 ⁻
2	1.00	EA	<p>0002 - Valve, plug, 36 inch x 60 inch face to face, ANSI 125/150 flanged, eccentric, cast iron body, solid ductile iron plug with nitrile elastomer coating, 100 percent port, nickel seat Item no. NS36FPV</p> <p>WITH ABOVE GROUND GEAR WITH INDICATOR AND HAND WHEEL. ALSO WITH UNATTACHED OPERATING NUT</p>	26210 ⁻	26210 ⁻

CORPORATE RESOLUTION

EXCERPT FROM MINUTES OF MEETING OF THE BOARD OF DIRECTORS OF
CIMSCO, INC.
INCORPORATED.

AT THE MEETING OF DIRECTORS OF CIMSCO, INC.
INCORPORATED, DULY NOTICED AND HELD ON November 1, 2016,
A QUORUM BEING THERE PRESENT, ON MOTION DULY MADE AND SECONDED. IT
WAS:

RESOLVED THAT Jeffrey De Villier, BE AND IS HEREBY
APPOINTED, CONSTITUTED AND DESIGNATED AS AGENT AND ATTORNEY-IN-
FACT OF THE CORPORATION WITH FULL POWER AND AUTHORITY TO ACT ON
BEHALF OF THIS CORPORATION IN ALL NEGOTIATIONS, BIDDING, CONCERNS
AND TRANSACTIONS WITH THE PARISH OF JEFFERSON OR ANY OF ITS AGENCIES,
DEPARTMENTS, EMPLOYEES OR AGENTS, INCLUDING BUT NOT LIMITED TO, THE
EXECUTION OF ALL BIDS, PAPERS, DOCUMENTS, AFFIDAVITS, BONDS, SURETIES,
CONTRACTS AND ACTS AND TO RECEIVE ALL PURCHASE ORDERS AND NOTICES
ISSUED PURSUANT TO THE PROVISIONS OF ANY SUCH BID OR CONTRACT, THIS
CORPORATION HEREBY RATIFYING, APPROVING, CONFIRMING, AND ACCEPTING
EACH AND EVERY SUCH ACT PERFORMED BY SAID AGENT AND ATTORNEY-IN-
FACT.

I HEREBY CERTIFY THE FOREGOING TO BE
A TRUE AND CORRECT COPY OF AN
EXCERPT OF THE MINUTES OF THE ABOVE
DATED MEETING OF THE BOARD OF
DIRECTORS OF SAID CORPORATION, AND
THE SAME HAS NOT BEEN REVOKED OR
RESCINDED.

Ashley Ruere
SECRETARY-TREASURER

8/7/17
DATE

Non-Public Works Bid

AFFIDAVIT

STATE OF LA

PARISH/COUNTY OF Jefferson

BEFORE ME, the undersigned authority, personally came and appeared: JEFF
DEVILLIER, (Affiant) who after being by me duly sworn, deposed and said that
 he/she is the fully authorized AGENT of Cmsco (Entity),
 the party who submitted a bid in response to Bid Number 50-120319, to the Parish of
 Jefferson.

Affiant further said:

Campaign Contribution Disclosures

(Choose A or B, if option A is indicated please include the required attachment):


Choice A _____ Attached hereto is a list of all campaign contributions, including the date and amount of each contribution, made to current or former elected officials of the Parish of Jefferson by Entity, Affiant, and/or officers, directors and owners, including employees, owning 25% or more of the Entity during the two-year period immediately preceding the date of this affidavit or the current term of the elected official, whichever is greater. Further, Entity, Affiant, and/or Entity Owners have not made any contributions to or in support of current or former members of the Jefferson Parish Council or the Jefferson Parish President through or in the name of another person or legal entity, either directly or indirectly.

Choice B ✓ there are **NO** campaign contributions made which would require disclosure under Choice A of this section.

Debt Disclosures

(Choose A or B, if option A is indicated please include the required attachment):

Choice A _____ Attached hereto is a list of all debts owed by the affiant to any elected or appointed official of the Parish of Jefferson, and any and all debts owed by any elected or appointed official of the Parish to the Affiant.

Choice B  _____ There are **NO** debts which would require disclosure under Choice A of this section.

Affiant further said:

That Affiant has employed no person, corporation, firm, association, or other organization, either directly or indirectly, to secure the public contract under which he received payment, other than persons regularly employed by the Affiant whose services in connection with the construction, alteration or demolition of the public building or project or in securing the public contract were in the regular course of their duties for Affiant; and

[The remainder of this page is intentionally left blank.]

That no part of the contract price received by Affiant was paid or will be paid to any person, corporation, firm, association, or other organization for soliciting the contract, other than the payment of their normal compensation to persons regularly employed by the Affiant whose services in connection with the construction, alteration or demolition of the public building or project were in the regular course of their duties for Affiant.


Signature of Affiant

JEFF DEVILLIEN
Printed Name of Affiant

SWORN AND SUBSCRIBED TO BEFORE ME
ON THE 8 DAY OF August, 2017.


Notary Public

Brandy McReynolds
Printed Name of Notary

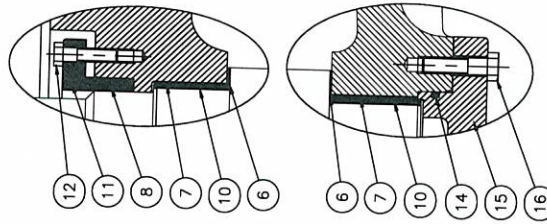
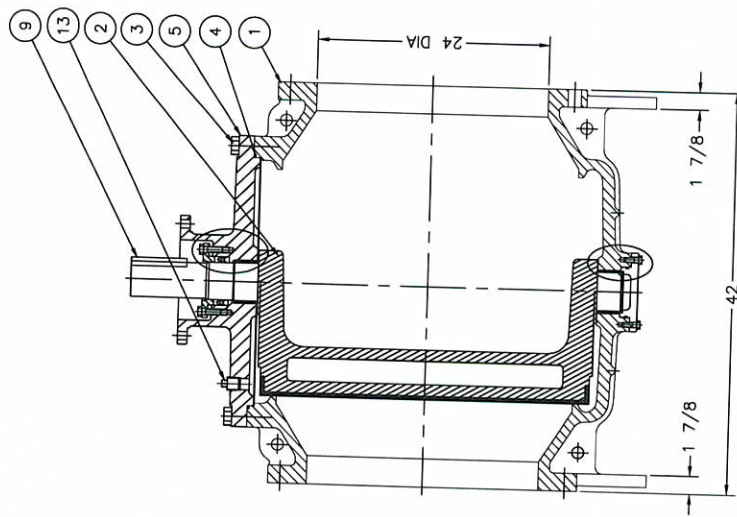
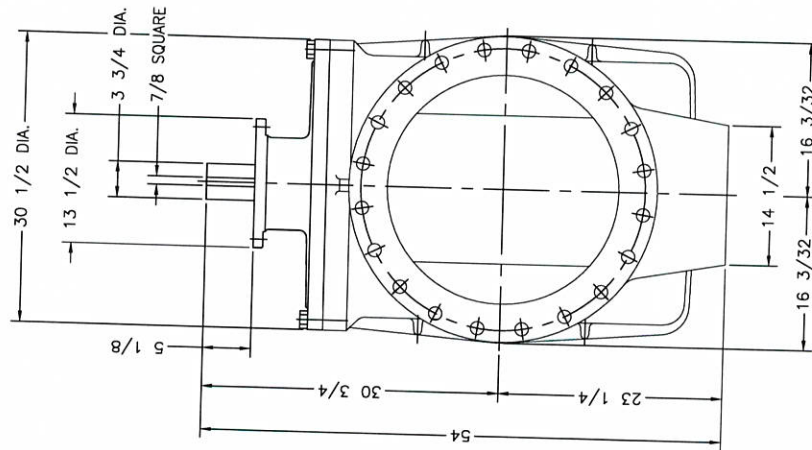
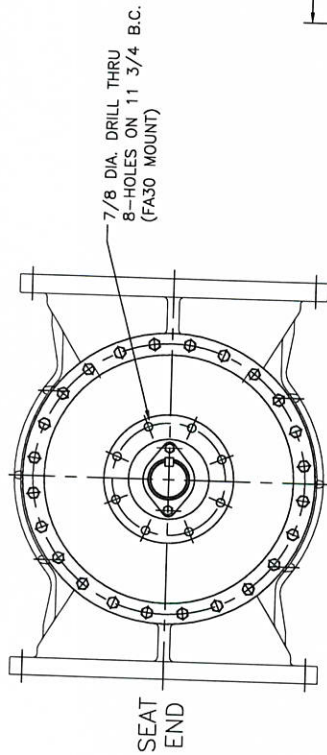
37504
Notary/Bar Roll Number



Brandy-Leigh McReynolds
Notary Public
State of Louisiana
LSBA# 37504
My Commission Is For Life

My commission expires upon death

- NOTES:
1. FLANGE DRILLING PER ANSI B16.1 CLASS 125
 2. IN COMPLIANCE WITH AWWA C517
 3. COLD WORKING PRESSURE: 150 PSI
 4. HYDROSTATIC TEST PRESSURE: 225 PSI



PARTS LIST	
ITEM NO.	DESCRIPTION
1	BODY
2	PLUG
3	COVER BOLTS
4	COVER O-RING
5	COVER
6	THRUST BEARING
7	BEARING
8	GLAND PACKING
9	KEY
10	PLUG BUSHING
11	PACKING GLAND
12	GLAND BOLTS
13	PIPE PLUG
14	END PLATE O-RING
15	END PLATE
16	END PLATE SCREWS

GA INDUSTRIES, LLC

24" ECO-CENTRIC PLUG VALVE - FLANGED
ANSI 125 LB FLANGES (100% PORT)

SERIAL NO. *	SCALE NTS	DRAWN BY RJT	APPR. BY JT
REFERENCES *	EFFECTIVE DATE 09-21-2010 TO	FILE PL	DRAWING NO. PL-1040
FIG. NUMBER 517		REV. A	

REV.	ADDED MOUNTING DIMENSION	DESCRIPTION	DATE	BY
A	10-28-2010	RJT		

J:\PLUG\PL-SHOW\PL-1040-A.DWG

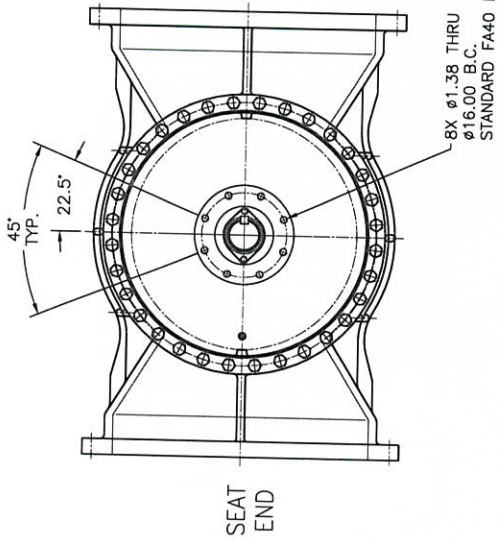
LIST OF MATERIALS

Flanged Eco-Centric Plug Valve (100% Port) 24" Figure No. 517

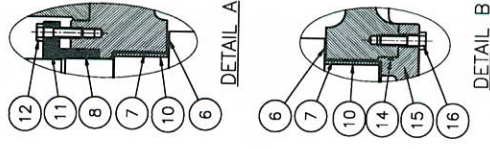
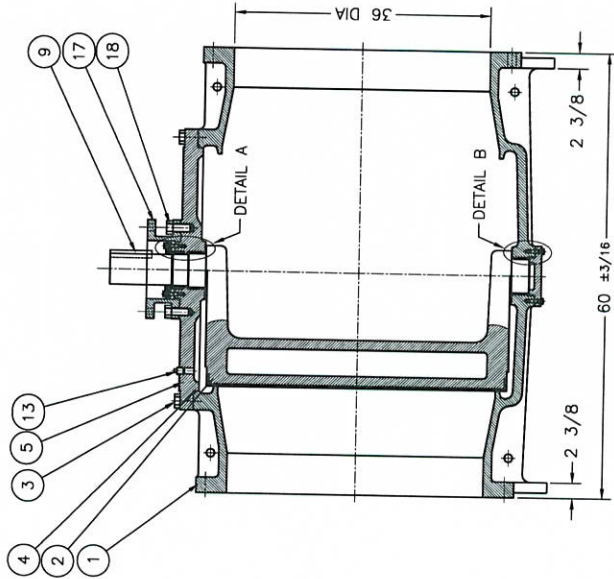
1.	Body	Cast Iron (Welded Ni Seat)	A126 Class B
2.	Plug	Ductile Iron (Vulcan. Buna-N Coated)	A536 Grade 65-45-12
3.	Cover Bolts	Stainless Steel	316
4.	Cover O-ring	Rubber	Buna-N
5.	Cover	Cast Iron	A126 Class B
6.	Thrust Bearing	PTFE	Commercial
7.	Bearing	Stainless Steel + PTFE	316
8.	Gland Packing	Rubber	Buna-N
9.	Key	Steel	Carbon
10.	Plug Bushing	Stainless Steel	316
11.	Packing Gland	Cast Iron	A126 Class B
12.	Gland Bolts	Steel	Zinc Plated
13.	Pipe Plug	Ductile Iron	A536 Grade
14.	End Plate O-ring	Rubber	65-45-12 Buna-N
15.	End Plate	Cast Iron	A126 Class B
16.	End Plate Screws	Steel	Zinc Plated

Stainless

Stainless



- NOTES:
1. FLANGE DRILLING PER ANSI B16.1 CLASS 125
 2. IN COMPLIANCE WITH AWWA C517
 3. COLD WORKING PRESSURE: 150 PSI
 4. HYDROSTATIC TEST PRESSURE: 225 PSI



PARTS LIST	
ITEM NO.	DESCRIPTION
1	BODY
2	PLUG
3	COVER BOLTS
4	COVER O-RING
5	COVER
6	THRUST BEARING
7	BEARING
8	PACKING
9	KEY
10	PLUG BUSHING
11	RETAINING RING
12	RETAINING BOLTS
13	PIPE PLUG
14	END PLATE O-RING
15	END PLATE
16	END PLATE SCREWS
17	COVER MOUNTING FLANGE
18	COVER MTG. FLG. SCREWS

GA INDUSTRIES, LLC		36" ECO-CENTRIC PLUG VALVE		ANSI 125 LB FLANGES (100% PORT)	
REV.	DESCRIPTION	DATE	BY	SERIAL NO. *	DRAWN BY DAK
1				FIG. NO. 517	APPR. BY JT
2				DATE 08-09-2017	SCALE N.T.S.
3				PROPERTY OF GA INDUSTRIES, LLC	
4				REFERENCES	FILE
5				DRAWING NO. REV.	PL-1148

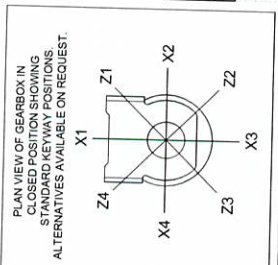
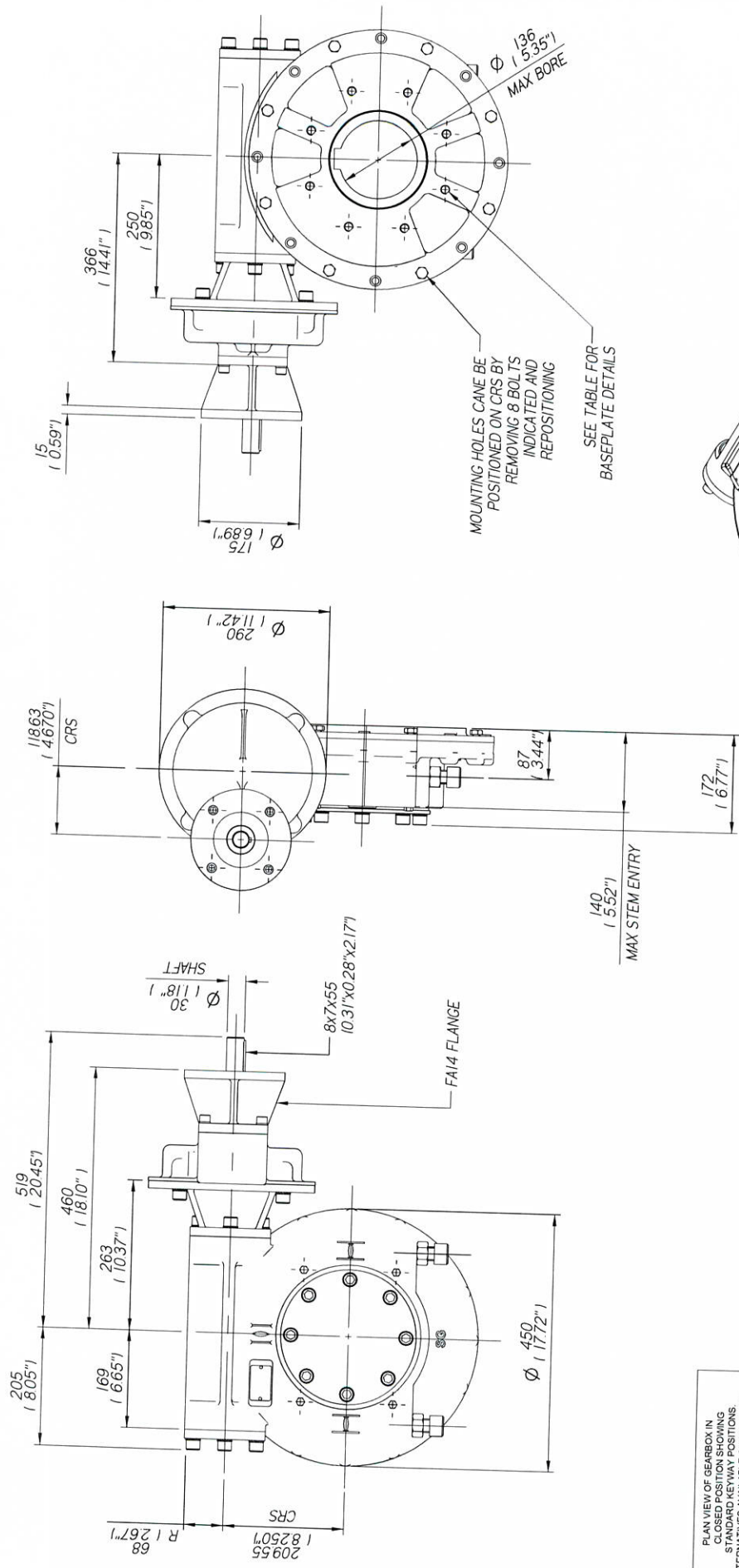
DIMENSIONS IN INCHES	
FINISH DIMENSIONS	(UNLESS OTHERWISE NOTED)
±.1	0 TO <1
±.005	1 TO <3
±.01	3 TO <6
±.02	6 TO <12
±.04	12 AND >
ANGLES ±.1/64	
DRIFTS 3 MAX	
FOR THIS TOLERANCE	SEE GA SIZE TOLERANCE REQUIREMENTS

0:\AUTOCAD\PLUG\PL-SHOW\PL-1148.dwg

LIST OF MATERIALS

Flanged Eco-Centric Plug Valve (100% Port)
36" Figure No. 517

1.	Body	Cast Iron (Welded Ni Seat)	A126 Class B
2.	Plug	Ductile Iron (Vulcan. Buna-N Coated)	A536 Grade 65-45-12
3.	Cover Bolts	Stainless Steel	316
4.	Cover O-ring	Rubber	Buna-N
5.	Cover	Cast Iron	A126 Class B
6.	Thrust Bearing	PTFE	Commercial
7.	Bearing	Stainless Steel+PTFE	316
8.	Packing	Rubber	Buna-N
9.	Key	Steel	Carbon
10.	Plug Bushing	Stainless Steel	316
11.	Retaining Ring	Cast Iron	A126 Class B
12.	Retaining Bolts	Steel	Zinc Plated ← Stainless
13.	Pipe Plug	Ductile Iron	A536 Grade 65-45-12
14.	End Plate O-ring	Rubber	Buna-N
15.	End Plate	Cast Iron	A126 Class B
16.	End Plate Screws	Steel	Zinc Plated ← Stainless
17.	Cover Mounting Flange	Ductile Iron	A536 Grade 65-45-12
18.	Cover Mtg. Flg. Screws	Steel	Zinc Plated ← Stainless



BASEPLATE DETAILS (ALL RATIOS)	
(ALTERNATIVES AVAILABLE ON REQUEST)	
FA25	8 HOLES 8.6 UNF-2A (10.64) DEEP
FA30	8 HOLES 8.6 UNF-2A (10.64) DEEP
FA30	8 HOLES 8.6 UNF-2A (10.64) DEEP
FA30	8 HOLES 8.6 UNF-2A (10.64) DEEP

MAX BORE RECTANGULAR KEY		MAX BORE SQ KEY	
STD	KEY	STD	KEY
ANSI B17.1	3/25	ANSI B17.1	1.4/4.875

rotork
gears

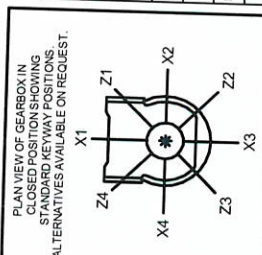
1W/2RS AWWA C504-UP QUARTER TURN GEARBOX
240, 360:1 RATIOS
MANUAL INPUT WITH FA14 FLANGE: FA25/FA30 BASEPLATE

DETAILS SUBJECT TO CHANGE WITHOUT PRIOR NOTICE

FOR UP TO DATE DETAILS VISIT www.rotork.com

APPROX WEIGHT: 132.5 kg

DRAWING No	PUB-1W72RS4WWA AG	Regina House Ring Road Bramley Leeds LS134ET United Kingdom
ISSUE	2	
DATE	04/08/2010	

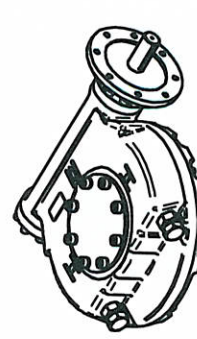
[illegible]

BASEPLATE DETAILS (ALL RATIOS)	
(ALTERNATIVES AVAILABLE ON REQUEST)	
HOLE DETAILS (22.5° OFF CENTRE!)	
ISO F30	8 HOLES M30X36 (1.18") DEEP ON Ø268.0 (Ø11.73") P.C.
F A30	8 HOLES 3/4"UNCX36 (1.18") DEEP ON Ø268.5 (Ø11.75") P.C.
ISO F35	8 HOLES M30X36 (1.42") DEEP ON Ø356.0 (Ø14.02") D.P.
F A35	8 HOLES 1"UNCX36 (1.42") DEEP ON Ø355.6 (Ø14.00") D.P.
ISO F40	8 HOLES M36X36 (1.42") DEEP ON Ø406.0 (Ø15.98") P.C.
F A40	8 HOLES 1.25"UNCX36 (1.42") DEEP ON Ø406.4 (Ø16.00") D.P.

INPUT FLANGE DETAILS (RATIO 60)									
FLANGE	O.D.A	SHAFT	RECESS	DEPTH	HOLE DETAILS (OFF CENTER)	KEY			
ISO F16	Ø210	Ø40.00 ± 0.05	Ø130.00 ± 0.15	0.00	4 HOLES Ø20.0 (± 0.05) P C	DETAILS	STD	MAX BORE	SO KEY
	Ø210	Ø1.576 ± 0.002	Ø2.120 ± 0.006	(0.20)	4 HOLES Ø0.168 (± 0.003) P C	12x6x10	B54235	BORE	KEY
FA16	Ø210	Ø40.00 ± 0.05	Ø126.92 ± 0.01	0.00	4 HOLES Ø20.0 (± 0.05) P C	Ø 0.47 x 0.31 x .94	B5446	-	-
	Ø210	Ø1.576 ± 0.002	Ø2.049 ± 0.007	(0.20)	4 HOLES Ø0.168 (± 0.003) P C	Ø 0.47 x 0.31 x .94	ANSI B17	6.50"	1.5" X 1.5"
ISO F25	Ø230	Ø50.00 ± 0.05	Ø200.10 ± 0.01	0.00	8 HOLES Ø16.0 (± 0.005)	14x9x10	STD	MAX BORE	RECTANGULAR KEY
F30	Ø230	Ø1.669 ± 0.002	Ø7.876 ± 0.004	(0.20)	8 HOLES Ø0.125 (± 0.001) P C	Ø 0.55 x 0.35 x .94	S	BORE	KEY
	Ø230	Ø20.00 ± 0.05	Ø152.30 ± 0.01	0.00	8 HOLES Ø16.0 (± 0.005)	14x9x10	B54235	BORE	KEY
FA25	Ø230	Ø50.00 ± 0.05	Ø198.00 ± 0.07	0.00	8 HOLES Ø16.0 (± 0.005)	Ø 0.55 x 0.35 x .94	B5446	-	-
	Ø230	Ø1.669 ± 0.002	Ø7.876 ± 0.004	(0.20)	8 HOLES Ø0.125 (± 0.001) P C	Ø 0.55 x 0.35 x .94	ANSI B17	6.50"	1.5" X 1.5"

MAX BORE SQ KEY		
STD	BORE	KEY
SA4235	-	-
SA46	-	-
NSI/B17	ø 50"	1.5" X 1.5"

MAX BORE RECTANGULAR KEY		
STD	BORE	KEY
SA4235	178	45 X 25
SA46	175	1.75" X 1.25"
NSI/B17	6.50"	4" X 2"



MOTORISED UNIT

APPROX WEIGHT: 244.0 kg

IWI/MOW9 QUARTER TURN GEARBOX, 60:1 RATIO
F16/ FA16/ F25/ FA25 INPUT:
F30/ FA30/ F35/ FA35/ F40/ FA40 BASEPLATE

1 30/ FA30/ F33/ FA35/ F40/ FA40 BASEPLATE

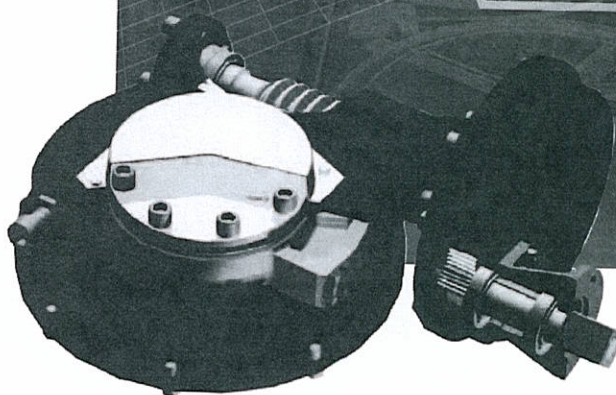
DRAWING No	PUB/IW/9	Regina House Ring Road Bramley Leeds LS134ET United Kingdom
ISSUE	2	
DATE	15/01/2013	

rotork gears

rotork® Gears

IW Series AWWA

C504 and C5PV-3 Quarter-turn
Worm Gear Operator



IW Quarter-turn Worm Gear Operator

The IW AWWA C504 & C5PV-3 worm gear operators are suitable for manual actuation of AWWA C504 butterfly valves and C5PV-3 plug valves. They are designed to meet or exceed all aspects of AWWA C504 & C5PV-3 specification and are manufactured from high quality and reliable materials. Overload and life tests reports are available upon request. All Rotork Gears actuators are made to ISO 9001 standards.

Features

- 100% grease filled for life and fully sealed
- Comprehensive gear ratios combined with a selection of input gear reducers
- Angular contact bearings supporting the worm shaft
- Removable and repositionable drive sleeve
- -40 to 250 °F standard temperature range
- Adjustable travel stops +/- 5 degrees
- Maximum rated output torque - 1.47 million in-lbs
- Maximum stem acceptance diameter - 12" bored with ANSI B17.1 square key
- Maximum base - FA40
- Above or Buried Service

Options

- Stem extensions
- Padlock kit
- NAMUR & Westlock Position indicator mounting kit
- High temperature: 0 to 300 °F
- Low temperature down to -60 °F
- Open Right Service
- 450 ft-lbs Service

Established Leaders in Actuation Technology

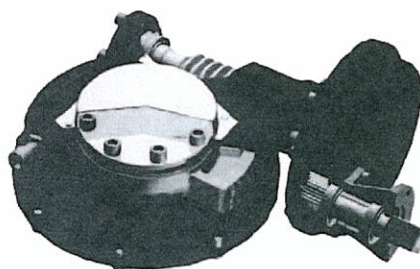
rotork® Gears

IW Series AWWA

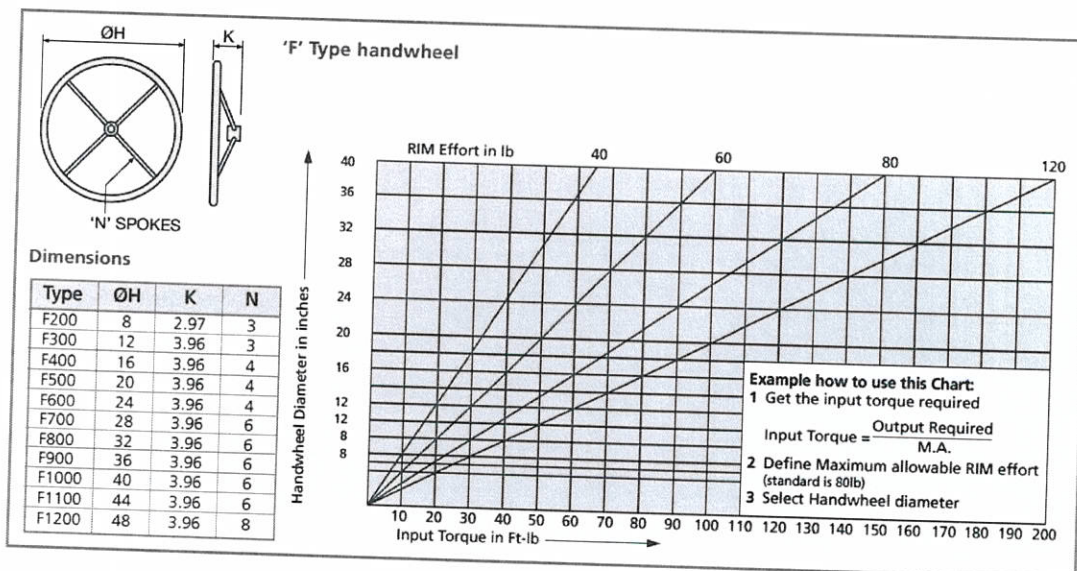
C504 and C5PV-3 Quarter-turn
Worm Gear Operator

Material Specification

Component	Material	Specification / Notes
Gearcase	Ductile Iron	ASTM A536 65-45-12
Base plate	Cast Iron	ASTM A48 35B/40B
Worm Shaft	Steel	AISI 4340
Quadrant	Manganese Bronze	ASTM B584 C86300
Position Indicator	Steel	AISI 1023
Drive sleeve	Steel	AISI 1023 or 1040 or 1055
Bearings	Angular Contact	
O-Ring seals	Nitrile	
Fasteners	316 SS	
Grease	Renolit CL-X2	
Input Shaft	431 SS	



Handwheel Selection Chart



Rotork Gears BV
Nijverheidstraat 25
7581 PV Losser
P.O. Box 98
7580 AB Losser
The Netherlands

tel: +31 (0)53-5388677
fax: +31 (0)53-5383939
email: info@rotorgears.nl

Rotork Gears UK
Regina House
Ring Road
Bramley, Leeds
West Yorkshire LS13 4ET
England

tel: +44 (0)113 2057276
fax: +44 (0)113 2563556
email: sales@rotorgears.com

Rotork Gears Americas
1811 Brittmoore
Houston
Texas 77043
USA

tel: +1 713 983 7381
fax: +1 713 856 8022
email: gears@rotorgears.com

Rotork Gears S.R.L.
via Olona, 65/67
20015 Parabiago (MI)
Italy

tel: +39 0331 552128
fax: +39 0331 553147
email: info@rotorgears.it

Rotork Gears Shanghai
No. 260 Lian Cao Road
Xin Mei Urban Industrial Park
Min Hang District
Shang Hai 201108
China

tel: 0086-21-64348388
fax: 0086-21-64348366
email: info@rotorgears.com.cn

A full listing of our worldwide
sales and service network is
available on our website at

www.rotork.com

Rotork Valvekits
Brookside Way,
Nunn Park,
Huthwaite,
Nottinghamshire, NG17 2NL
England

tel: +44 (0)1623 440211
fax: +44 (0)1623 440214
email: sales@rotorkvalvekits.com

Rotork Gears India
165/166, Bommasandra,
Jigani Link Road,
Kiadb Industrial Area,
Anekal Thaluk, Jigani Hobli,
Bangalore 562106

tel: +91 80 3098 1600
fax: +91 80 3098 1610
email: sales@rotork.co.in

Formerly RG112E. As part of a process of on-going product development, Rotork reserves the right to amend and change specifications without prior notice. Published data may be subject to change.

For the very latest version release, visit our website at www.rotork.com.

The name Rotork is a registered trademark. Rotork recognizes all registered trademarks. Published and produced in the UK by Rotork Controls Limited. POWTG0411