



# Accessory

TPO Accessories

## Description

EverGuard® TPO Walkway Roll provides roofing contractors with an easy-to-install factory-built detail. EverGuard® TPO Walkway Rolls are manufactured using GAF's proven, durable EverGuard® TPO as well as recycled TPO.

## Durable...

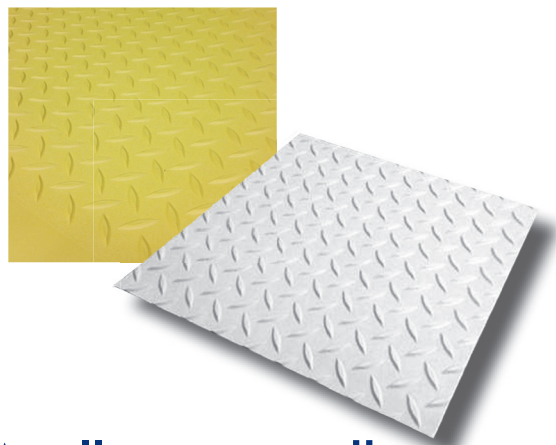
The EverGuard® TPO Walkway Roll is designed to protect the membrane in areas exposed to rooftop traffic for maintenance access or other uses. These areas include HVAC, roof hatches, access doors, etc. The EverGuard® TPO Walkway Roll is required on a GAF-warranted roofing system.

## Options...

In addition to a standard Gray TPO Walkway Roll, GAF has recently introduced Yellow Walkway Rolls to the market. These "safety" Yellow Walkway Rolls are great for sensitive areas of a roof, such as perimeters, around skylights, or in areas of low clearance.

## Product Highlights

- Great traction with diamond plate design
- Walkways have smooth edges for easy weldability
- Manufactured using recycled TPO with superior weatherability built in
- Comes in standard Gray and Yellow
- 34" x 50' (864 mm x 15.24 m) (diamond pattern measures 30" [762 mm] with 2" [51 mm] smooth on both edges)
- 125 mil thickness
- 118 lbs. (54 kg) per roll



# Walkway Roll

## Application

**Heat weld** – Heat-weld EverGuard® TPO Walkway Roll to the roof membrane surface continuously around the walkway roll perimeter.

- Walkway rolls must be spaced 6" (152 mm) to allow for drainage.

**Tape** – EverGuard® TPO Walkway Roll may also be installed with TPO primer and 3" (76 mm) seam tape.

- First, roll or brush the TPO primer on the back of the TPO roll along the edges and down the middle length of the roll.
- Clean and prime the roof membrane where the roll will be installed.
- Install tape to the back of the roll where cleaned (edges and middle) and roll-in with a silicone hand roller.
- Remove the release paper and install the taped rolls directly onto the roof membrane. Secure the rolls by rolling into place.
- Walkway rolls must be spaced 6" (152 mm) to allow for drainage.

EverGuard® TPO accessories are designed for use with GAF EverGuard® TPO single-ply membranes and with EverGuard Extreme® and EverGuard® Freedom™ TPO self-adhering membranes. The factory-coated accessories may be installed on mechanically attached, fully adhered, or self-adhered EverGuard® TPO roofing systems.

See published application and specifications manual for detailed instructions.

Quality You Can Trust...From North America's Largest Roofing Manufacturer!™

[gaf.com](http://gaf.com)

Visit [gaf.com](http://gaf.com) to see our full line of prefabricated accessories!



# EverGuard<sup>®</sup>TPO

## SINGLE-PLY ROOFING SYSTEMS

# TPO Roll Accessories

### Description

EverGuard<sup>®</sup> TPO single-ply roofing system accessories provide roofing contractors an easy-to-install, factory-built detail. EverGuard<sup>®</sup> accessories are constructed from GAF's proven durable EverGuard<sup>®</sup> TPO single-ply reinforced membrane.

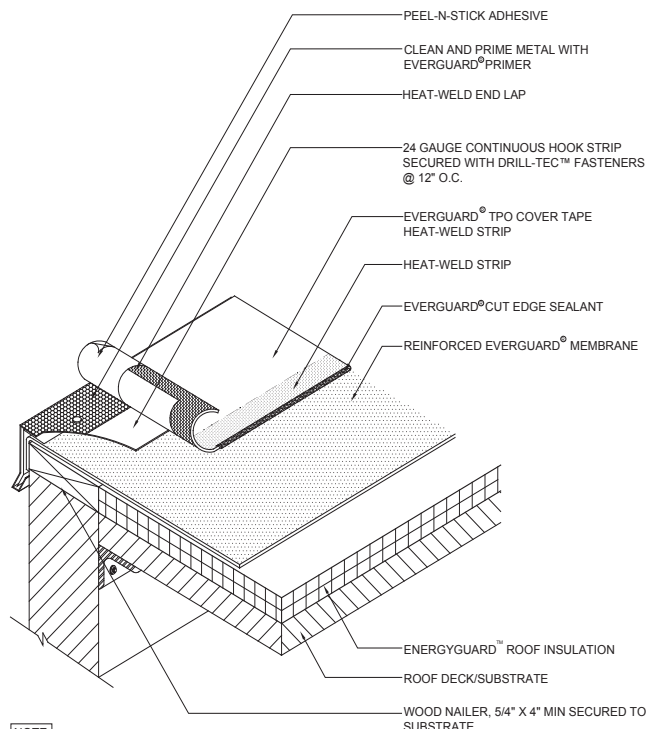
- **Cost effective...**  
Reduce installed costs
- **Improved reliability...**  
Factory-built accessories reduce risk of leaks and callbacks
- **Improved aesthetics...**  
Uniform look

### Application

EverGuard<sup>®</sup> TPO Heat-Weldable Cover Tape is constructed from 0.045 inch reinforced TPO membrane; the six-inch-wide tape has a 3-inch self-adhered area and a 3-inch heat-weldable area. The self-adhered membrane area is adhered to primed edge metal while the heat-weldable area is attached to the roofing membrane using the welding machine of choice. EverGuard<sup>®</sup> Heat-Weldable Cover Tape is eligible for inclusion in EverGuard<sup>®</sup> Diamond Pledge<sup>™</sup> Guarantee at up to 20 years of coverage.

### Product Information

EverGuard<sup>®</sup> TPO Heat-Weldable Cover Tape is packaged as a hundred foot roll with two rolls in every box.



#### NOTE

1. TPO COVER TAPE ONLY TO BE USED WITH TPO MEMBRANE SYSTEMS.
2. CLEAN METAL AND MEMBRANE WITH EVERGUARD<sup>®</sup> TPO CLEANER AND LET DRY.
3. PRIME THE METAL ONLY WITH EVERGUARD<sup>®</sup> TPO PRIMER. DO NOT SPILL PRIMER ON WELDED SEAM AREA.
4. HOT-AIR WELD THE MEMBRANE TO MEMBRANE AREA USING EITHER A ROBOTIC OR HAND WELDER TO SPEC.

## Heat-Weldable Cover Tape

### Specifications

**Roll length:** 100'

**Roll width:** 6"

### Shipping Specifications

**Rolls per carton:** 2

**Weight of carton:** 34 lbs

**Cartons per pallet:** 27

### Code Approvals

- UL Listed Accessory
- Miami-Dade County Approved
- Texas Department of Insurance
- ICC-ES
- State of Florida Approved

Quality You Can  
Trust...From North  
America's Largest  
Roofing Manufacturer!<sup>™</sup>

[www.gaf.com](http://www.gaf.com)



## Accessory

### Description

EverGuard® TPO 6" Cover Tape provides roofing contractors with an easy-to-install factory-built detail. EverGuard® TPO 6" Cover Tape is constructed from GAF's proven, durable, high-performance EverGuard® TPO.

- **Cost effective...**Reduces installed costs
- **Improved reliability...**Factory-built accessories reduce risk of leaks and callbacks
- **Improved aesthetics...**Uniform look

### Application

For use in stripping-in primed galvanized edge metal and to install RapidSeam™ end laps. Using soap and water, clean the entire surface and roof membrane to be covered. Dry the entire area. Wipe area to be primed with a white cloth moistened with EverGuard® TPO Cleaner. Brush or roller-apply the EverGuard® Primer 3" (76 mm) onto each surface, carrying this past the ends 3" (76 mm). Install the EverGuard® TPO 6" Cover Tape over the primer after flash-off and roll-in with a silicone roller.



## 6" Cover Tape

### Product Information

EverGuard® TPO 6" Cover Tape is a 6" (152 mm) wide, non-reinforced TPO membrane backed with a butyl tape adhesive.

Specifications	
Roll Length	100' (30.5 m)
Roll Width	6" (152 mm)
Shipping Specifications	
Rolls per Case	2
Weight per Case	37.4 lb. (16.96 kg)
Cases per Pallet	36
Product SKUs	
White	755A920
Tan	755A820
Gray	755A345

TPO Accessories

Quality You Can  
Trust...From  
North America's  
Largest Roofing  
Manufacturer!™

[gaf.com](http://gaf.com)



Accessory

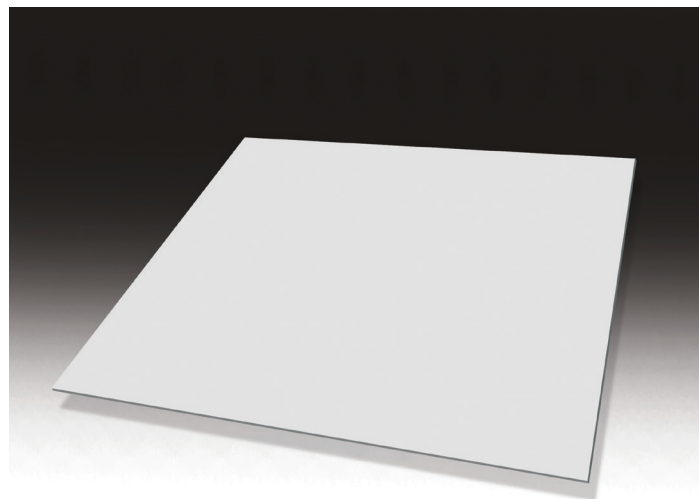
TPO Accessories

### Description

EverGuard® TPO Coated Metal Sheets are constructed with TPO membrane laminated to galvanized sheet metal.

### Product Information

- 24-gauge steel with a 25-mil thick membrane film
- Cuts and forms like standard sheet metal
- Field and flashing TPO membrane heat welds directly to coated metal
- For metal gravel stop and drip edges, metal base and curb flashing, sealant pans, and scupper sleeves
- Available in both EverGuard® and EverGuard Extreme® TPO



## EverGuard® TPO Coated Metal Sheets

- 4' (1.21 m) x 10' (3.05 m) sheets
- 5, 10, or 30 sheets per pallet; 40 lb. (18.14 kg)/sheet
- Also available in (allow 2 – 4 weeks lead time):
  - Coated Aluminum – 23 lb. (10.43 kg)/sheet
    - 25-mil TPO and 40-gauge corrosion-resistant aluminum
  - Coated Stainless – 40 lb. (18.14 kg)/sheet
    - 25-mil TPO and 24-gauge stainless steel
  - 20-gauge Galvanized – 60 lb. (27.22 kg)/sheet
    - 25-mil TPO and 20-gauge galvanized steel

Quality You Can  
Trust...From  
North America's  
Largest Roofing  
Manufacturer!™

[gaf.com](http://gaf.com)

Visit [gaf.com](http://gaf.com) to see our full line of prefabricated accessories!



### Description

EverGuard<sup>®</sup> TPO UN-55 Detailing Membrane provides roofing contractors with an easy-to-install factory-built detail. EverGuard<sup>®</sup> TPO UN-55 Detailing Membrane is constructed using GAF's proven, durable EverGuard<sup>®</sup> TPO. This accessory is used as an alternative material for flashing penetrations and corners of base and curb flashing.

- **Cost effective...**  
Reliability is built in; made with GAF EverGuard<sup>®</sup> TPO membrane
- **Improved reliability...**  
Factory-built accessories reduce risk of leaks and callbacks
- **Improved aesthetics...**  
Uniform look

### Application

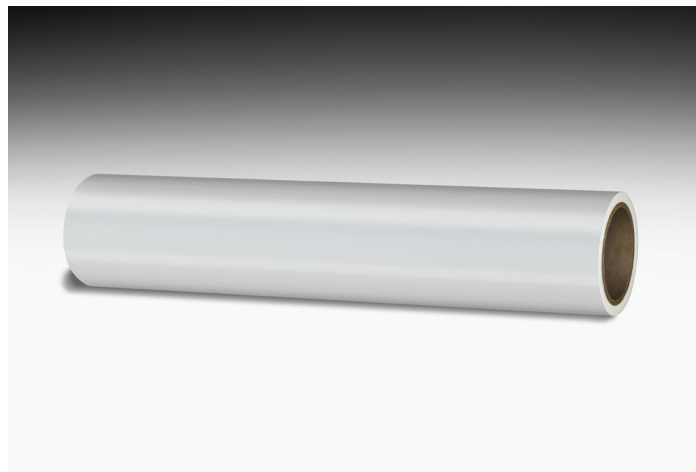
EverGuard<sup>®</sup> TPO UN-55 Detailing Membrane is designed for use with GAF EverGuard<sup>®</sup> TPO and EverGuard<sup>®</sup> Freedom<sup>™</sup> Self-Adhering TPO. UN-55 Detailing Membrane may be installed on:

- EverGuard<sup>®</sup> TPO 45, 60, and 80 mil mechanically attached or fully adhered roofing systems
- EverGuard<sup>®</sup> Freedom<sup>™</sup> TPO 45, 60, and 80 mil self-adhering roofing systems

See published application and specifications manual for detailed instructions.

### Product Information

EverGuard<sup>®</sup> TPO UN-55 Detailing Membrane come standard in White, and is also offered in several additional colors. The membrane is unreinforced, so it's easier to work with at difficult flashing details.



## UN-55 Detailing Membrane

- Manufactured to strict specifications
- Designed for ease of installation
- Alternative flashing/reinforcement material for penetrations and corners
- Required wherever preformed vent boots cannot be used

SPECIFICATIONS	
Roll Size:	24" x 50' (610 mm x 15.24 m) rolls
Material:	55 mil unreinforced TPO membrane
SHIPPING SPECIFICATIONS	
Weight per roll:	28 lbs (12.7 kg)

Quality You Can  
Trust...From  
North America's  
Largest Roofing  
Manufacturer!<sup>™</sup>

[gaf.com](http://gaf.com)

Visit [gaf.com](http://gaf.com) to see our full line of prefabricated accessories!





# TPO Accessories

## Description

EverGuard<sup>®</sup> TPO single-ply roofing system accessories provide roofing contractors an easy-to-install factory-built detail. EverGuard<sup>®</sup> accessories are manufactured using a proprietary formulation designed for use with GAF EverGuard<sup>®</sup> TPO single-ply membranes.

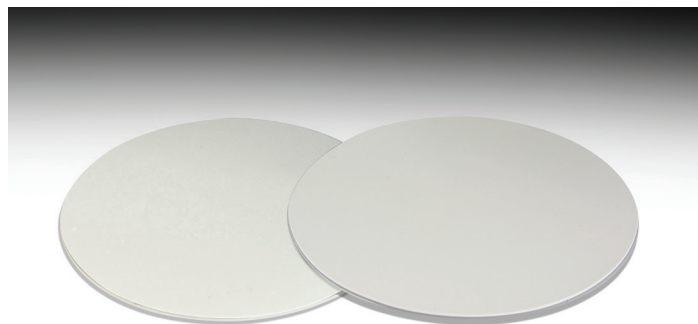
- **Cost Effective...**  
Reduces installed costs
- **Improved Reliability...**  
Factory-built accessories reduce risk of leaks and callbacks
- **Improved Aesthetics...**  
Uniform look

## Application

EverGuard<sup>®</sup> TPO accessories are designed for use with GAF EverGuard<sup>®</sup> TPO single-ply membranes. The accessories may be installed on mechanically attached, fully adhered, or RhinoBond<sup>®</sup> EverGuard<sup>®</sup> TPO roofing systems. EverGuard<sup>®</sup> accessories are installed using conventional techniques. See published application and specifications manual for detailed instructions.

## Product Information

EverGuard<sup>®</sup> T-Joint Cover Patches are created from a proprietary TPO formulation engineered to work with EverGuard<sup>®</sup> TPO single-ply membranes. EverGuard<sup>®</sup> TPO T-Joint Cover Patches create a membrane seal over T-joints that arise when installing a 60 or 80 mil EverGuard<sup>®</sup> TPO system.



## T-Joint Cover Patch

- Conforming membrane seal for use over T-joints in 60 and 80 mil membrane applications
- Designed for ease of welding over T-joints formed when installing an EverGuard<sup>®</sup> TPO system
- EverGuard<sup>®</sup> T-Joint Cover Patches are formed using unreinforced membrane to a nominal 55 mil thickness

SPECIFICATIONS	
Membrane Thickness:	.055" (1.40 mm)
Unit Size:	4" x 4" (102 mm x 102 mm)
SHIPPING SPECIFICATIONS	
Patches per carton:	100
Weight per carton:	3.3 lb. (1.5 kg)
Cartons per pallet:	196
PRODUCT SKUs	
T-Joint Cover Patch White	7712920
T-Joint Cover Patch Gray	7712345
T-Joint Cover Patch Tan	7712820

Quality You Can  
Trust...From  
North America's  
Largest Roofing  
Manufacturer!™

[gaf.com](http://gaf.com)

## Also Available...





Molded  
Accessories

# TPO Molded Accessories

## Description

EverGuard® TPO single-ply roofing system molded accessories provide roofing contractors an easy-to-install, factory-built detail. EverGuard® molded accessories are manufactured using a proprietary formulation designed for use with GAF's EverGuard® TPO single-ply membranes.

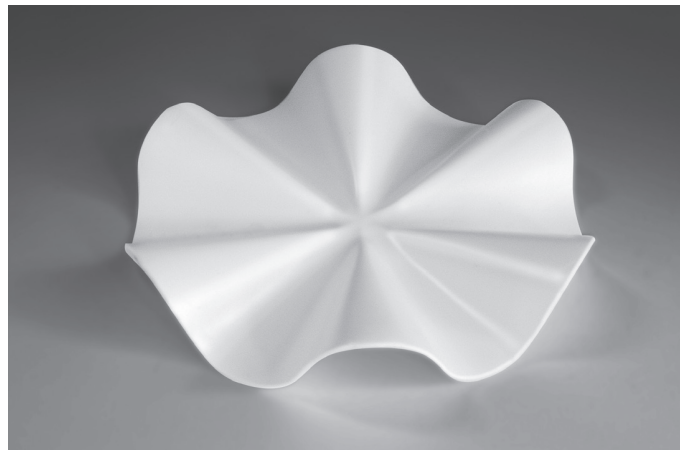
- **Cost effective...**  
Reduces installed costs
- **Improved Reliability...**  
Factory-built accessories reduce risk of leaks and callbacks
- **Improved aesthetics...**  
Uniform look

## Application

EverGuard® TPO molded accessories are designed for use with GAF EverGuard® TPO single-ply membranes and EverGuard® Freedom™ TPO self-adhering membranes. The molded accessories may be installed on mechanically attached, fully adhered, or self-adhered EverGuard® TPO roofing systems. EverGuard® molded accessories are installed using conventional techniques. See published application and specifications manual for detailed instructions.

## Product Information

EverGuard® Fluted Corners are molded from a proprietary TPO formulation engineered to work with EverGuard® TPO single-ply membranes. Fluted Corners allow for easy flashing of non-uniform corners.



## Fluted Corner

- Manufactured to accommodate imperfect corners
- Designed for ease of welding in tight areas
- Fluted Corners are formed using unreinforced membrane to a nominal 50 mil thickness

SPECIFICATIONS	
Diameter:	8"
Nominal thickness:	.050"
SHIPPING SPECIFICATIONS	
Corners per carton:	20
Weight per carton:	2.5 lbs.
Cartons per pallet:	250
PRODUCT SKUs	
TPO Fluted Corner White	8A00920WA
TPO Fluted Corner Tan	8A00820WA
TPO Fluted Corner Grey	8A00345WA

## Also Available...



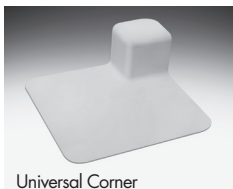
Pourable Sealer Pocket



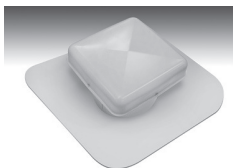
Inside Corner



Vent Boot



Universal Corner



Vent

Quality You Can  
Trust...From  
North America's  
Largest Roofing  
Manufacturer!™

[gaf.com](http://gaf.com)



**EverGuard<sup>®</sup>TPO**  
SINGLE-PLY ROOFING SYSTEMS

Molded  
Accessories

TPO Molded Accessories

### Description

EverGuard<sup>®</sup> TPO single-ply roofing system molded accessories provide roofing contractors an easy-to-install, factory-built detail. EverGuard<sup>®</sup> molded accessories are manufactured using a proprietary formulation designed for use with GAF's EverGuard<sup>®</sup> TPO single-ply membranes.

- **Cost effective...**  
Reduces installed costs
- **Improved reliability...**  
Factory-built accessories reduce risk of leaks and callbacks
- **Improved aesthetics...**  
Uniform look

### Application

EverGuard<sup>®</sup> TPO molded accessories are designed for use with GAF EverGuard<sup>®</sup> TPO single-ply membranes and EverGuard<sup>®</sup> Freedom<sup>™</sup> TPO self-adhering membranes. The molded accessories may be installed on mechanically attached, fully adhered, or self-adhered EverGuard<sup>®</sup> TPO roofing systems. EverGuard<sup>®</sup> molded accessories are installed using conventional techniques. See published application and specifications manual for detailed instructions.

### Product Information

EverGuard<sup>®</sup> Inside Corners are molded from a proprietary TPO formulation engineered to work with EverGuard<sup>®</sup> TPO single-ply membranes. Inside Corners allow for fast flashing of base and curb corners.



## Inside Corner

- Manufactured to accommodate inside corners of base and curb flashings
- Designed for ease of welding in tight areas
- Inside Corners are formed using unreinforced membrane to a nominal 50 mil thickness

SPECIFICATIONS	
Membrane thickness:	.050"
Corner dimensions:	6" x 6" x 5 1/4"
SHIPPING SPECIFICATIONS	
20 corners per carton:	3.5 lbs./carton
Cartons per pallet:	54
PRODUCT SKUs	
Inside Corner White	8509920WA
Inside Corner Grey	8509345WA
Inside Corner Tan	8509820WA

### Also Available...



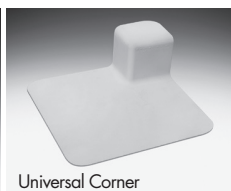
Fluted Corner



Split Pipe Boot



Vent Boot



Universal Corner



Vent

Quality You Can  
Trust...From  
North America's  
Largest Roofing  
Manufacturer!<sup>™</sup>

**[gaf.com](http://gaf.com)**





**EverGuard<sup>®</sup>TPO**  
SINGLE-PLY ROOFING SYSTEMS

Molded  
Accessories

TPO Molded Accessories

### Description

EverGuard<sup>®</sup> TPO single ply roofing system molded accessories provide roofing contractors an easy-to-install, factory-built detail. EverGuard<sup>®</sup> molded accessories are manufactured using a proprietary formulation designed for use with GAF's EverGuard<sup>®</sup> TPO single-ply membranes.

- **Cost effective...**  
Reduces installed costs by up to 25%
- **Improved Reliability...**  
Factory built accessories reduce risk of leaks and callbacks
- **Improved aesthetics...**  
Uniform look

### Application

EverGuard<sup>®</sup> TPO molded accessories are designed for use with GAF EverGuard<sup>®</sup> TPO single-ply membranes and EverGuard<sup>®</sup> Freedom<sup>™</sup> TPO self-adhering membranes. The molded accessories may be installed on mechanically attached, fully adhered or self-adhered EverGuard<sup>®</sup> TPO roofing systems. EverGuard<sup>®</sup> molded accessories are installed using conventional techniques. See published application and specifications manual for detailed instructions.

### Product Information

EverGuard<sup>®</sup> pourable sealer pockets are molded from a proprietary TPO formulation engineered to work with EverGuard<sup>®</sup> TPO single-ply membranes. They eliminate the need for contractors to fabricate a pitch pocket in the field.



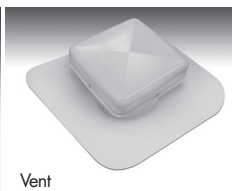
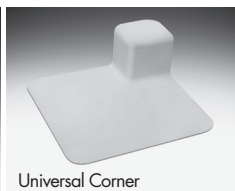
## Pourable Sealer Pocket

- Perfect for irregular roof penetrations
- Fill with EverGuard<sup>®</sup> TPO pourable sealer or TOPCOAT<sup>®</sup> FlexSeal<sup>™</sup> for the perfect finish
- Available in custom colors and sizes\*

SPECIFICATIONS	
Total Width of Pocket	12"
Total Length of Pocket	15 1/4"
Height of Walls	4"
SHIPPING SPECIFICATIONS	
Box Size	28" x 12" x 12"
Pieces per box	6
Weight per box	6.5 lbs
Boxes per pallet	16
Pallet Size	42" x 42"
PRODUCT SKUs	
White	8002920CU

\* Contact your local representative for details.

### Also Available...



Quality You Can  
Trust...From  
North America's  
Largest Roofing  
Manufacturer!<sup>™</sup>

[gaf.com](http://gaf.com)



# Molded Accessories

# TPO Molded Accessories

## Description

EverGuard® TPO single-ply roofing system molded accessories provide roofing contractors an easy-to-install, factory-built detail. EverGuard® molded accessories are manufactured using a proprietary formulation designed for use with GAF's EverGuard® TPO single-ply membranes.

- **Cost effective...**  
Reduces installed costs
- **Improved Reliability...**  
Factory-built accessories reduce risk of leaks and callbacks
- **Improved aesthetics...**  
Uniform look

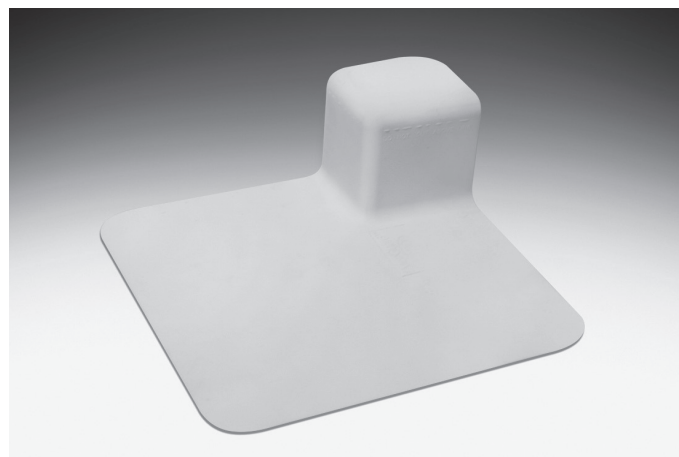
## Application

EverGuard® TPO molded accessories are designed for use with GAF EverGuard® TPO single-ply membranes and EverGuard® Freedom™ TPO self-adhering membranes. The molded accessories may be installed on mechanically attached, fully adhered, or self-adhered EverGuard® TPO roofing systems. EverGuard® molded accessories are installed using conventional techniques. See published application and specifications manual for detailed instructions.

## Product Information

EverGuard® Universal Corners accommodate both inside and outside corners of base and curb flashings. Simply cut at markings to produce either an inside or outside corner reinforcement. EverGuard® Universal Corners eliminate the need to inventory two items.

## Also Available...



## Universal Corner

- One standard size
- Can be cut to accommodate use as either an inside or outside corner reinforcement
- Molded to 60 mil thickness from TPO

SPECIFICATIONS	
Size:	4" x 4" with Flange
Thickness:	.060"
SHIPPING SPECIFICATIONS	
Corners per carton:	6
Weight per carton:	6 lbs.
Cartons per pallet:	60
PRODUCT SKUs	
White	7730920CU

Quality You Can Trust...From North America's Largest Roofing Manufacturer!™

[gaf.com](http://gaf.com)



Fluted Corner



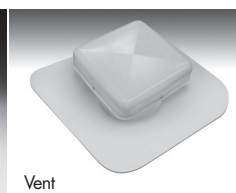
Inside Corner



Preformed Vent Boot



Square Tube Wrap



Vent



Molded  
Accessories

TPO Molded Accessories

### Description

EverGuard® TPO single-ply roofing system molded accessories provide roofing contractors an easy-to-install, factory-built detail. EverGuard® molded accessories are manufactured using a proprietary formulation designed for use with GAF's EverGuard® TPO single-ply membranes.

- **Cost effective...**  
Reduces installed costs
- **Improved reliability...**  
Factory-built accessories reduce risk of leaks and callbacks
- **Improved aesthetics...**  
Uniform look

### Application

EverGuard® TPO molded accessories are designed for use with GAF EverGuard® TPO single-ply membranes and EverGuard® Freedom™ TPO self-adhering membranes. The molded accessories may be installed on mechanically attached, fully adhered, or self-adhered EverGuard® TPO roofing systems. EverGuard® molded accessories are installed using conventional techniques. See published application and specifications manual for detailed instructions.

### Product Information

EverGuard® Vent Boots are molded from a proprietary TPO formulation engineered to work with EverGuard® TPO single-ply membranes. Vent Boots allow for fast flashing of Vents and pipes between 1 and 6 inches in diameter.

### Also Available...



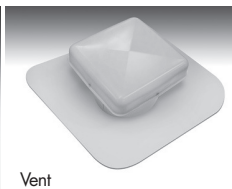
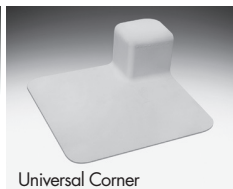
## Vent Boot

- One standard size accommodates most common pipes and conduits
- Supplied with stainless-steel clamping rings

SPECIFICATIONS	
Membrane thickness:	0.075"
For pipe sizes:	1" - 6" dia.
SHIPPING SPECIFICATIONS	
Boots per carton:	6
Weight per carton:	9 lbs.
Cartons per pallet:	54
PRODUCT SKUs	
Vent Boot White	7710920CU

Quality You Can  
Trust...From  
North America's  
Largest Roofing  
Manufacturer!™

[gaf.com](http://gaf.com)





### Description

EverGuard<sup>®</sup> TPO single-ply roofing system preformed accessories provide roofing contractors an easy-to-install, factory-built detail. EverGuard<sup>®</sup> preformed accessories are constructed from GAF's proven, durable EverGuard<sup>®</sup> TPO single-ply reinforced membrane.

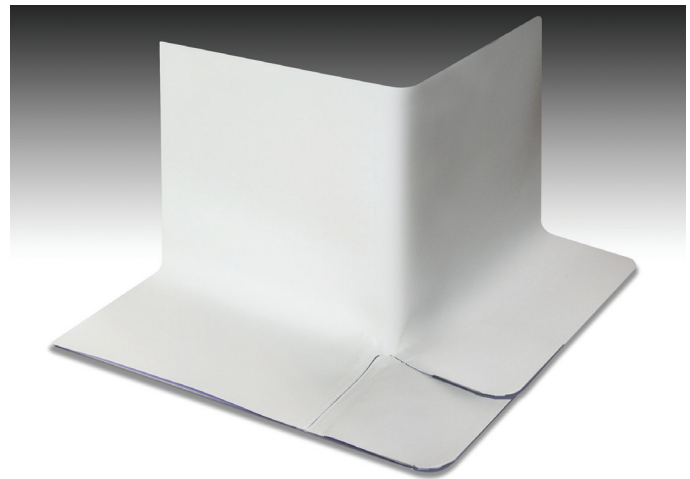
- **Cost effective...**  
Reduces installed costs
- **Improved reliability...**  
Factory-built accessories reduce risk of leaks and callbacks
- **Improved aesthetics...**  
Uniform look

### Application

EverGuard<sup>®</sup> TPO Corner Curb Wraps are designed for use with GAF EverGuard<sup>®</sup> TPO single-ply membranes. Corner Curb Wraps may be installed on mechanically attached, fully adhered, or self-adhered EverGuard<sup>®</sup> TPO roofing systems. Corner Curb Wraps are installed using conventional heat-welding techniques.

### Product Information

EverGuard<sup>®</sup> Corner Curb Wraps are constructed from EverGuard<sup>®</sup> reinforced 45 mil TPO membrane. Four standard sizes of Corner Curb Wraps are available. Each Corner Curb Wrap is 12" in height and has a 6" base area for welding to field membrane.



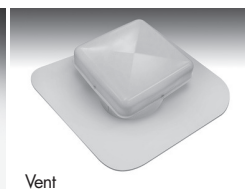
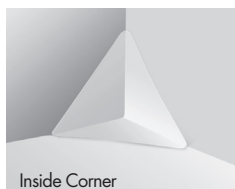
## Corner Curb Wrap

- Available in 4 standard sizes
- Available in white, gray, and tan
- Custom sizes also available\*

SPECIFICATIONS	
Height:	12"
Base:	6"
Length:	13.5", 19.5", 25.5", 31.5"
SHIPPING SPECIFICATIONS	
Curbs per box:	4
Weight per box:	
13.5"	5.6 lbs.
19.5"	7.4 lbs.
25.5"	10.7 lbs.
31.5"	12.5 lbs.
Boxes per pallet:	32
PRODUCT SKUs	
White 13.5"	85F2920
White 19.5"	85F3920
White 25.5"	85F4920
White 31.5"	85F5920

\*Contact your local representative for details.

### Also Available...



Quality You Can  
Trust...From  
North America's  
Largest Roofing  
Manufacturer!™

**gaf.com**



## Preformed Accessories

# TPO Preformed Accessories

### Description

EverGuard® TPO single-ply roofing system preformed accessories provide roofing contractors an easy-to-install, factory-built detail. EverGuard® preformed accessories are constructed from GAF's proven, durable EverGuard® TPO single-ply reinforced membrane.

- **Cost effective...**  
Reduces installed costs
- **Improved reliability...**  
Factory-built accessories reduce risk of leaks and callbacks
- **Improved aesthetics...**  
Uniform look

### Application

EverGuard® TPO preformed accessories are designed for use with GAF EverGuard® TPO single-ply membranes. The preformed accessories may be installed on mechanically attached, fully adhered, or self-adhered EverGuard® TPO roofing systems. Preformed accessories are installed using conventional techniques. See published application and specifications manual for detailed instructions.

### Product Information

EverGuard® Split Pipe Boots are constructed from EverGuard® reinforced 45 mil membrane. Three standard sizes of Split Pipe Boots are available. Since they are split, they can be wrapped around pipes and conduit where closed boots cannot be used.



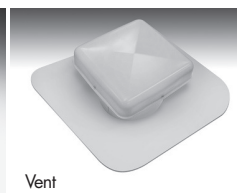
## Split Pipe Boot

- Available in 3 standard sizes
- Custom sizes also available\*

SPECIFICATIONS	ITEM DIMENSIONS/SKU #
For pipe sizes:	1" x 2" 85G1920
	3" x 5" 85G2920
	6" x 8" 85G3920
SHIPPING SPECIFICATIONS	
Boots per box:	6
Weight per box:	
1" – 2"	7.5 lbs.
3" – 5"	7.5 lbs.
6" – 8"	11 lbs.
Boxes per pallet:	
1" – 2"	36
3" – 5"	36
6" – 8"	24

\*Contact your local representative for details.

### Also Available...



Quality You Can Trust...From North America's Largest Roofing Manufacturer!™  
**[gaf.com](http://gaf.com)**





Preformed  
Accessories

TPO Preformed Accessories

### Description

EverGuard® TPO single-ply roofing system preformed accessories provide roofing contractors an easy-to-install, factory-built detail. EverGuard® preformed accessories are constructed from GAF's proven, durable EverGuard® TPO single-ply reinforced membrane.

- **Cost effective...**  
Reduces installed costs
- **Improved reliability...**  
Factory-built accessories reduce risk of leaks and callbacks
- **Improved aesthetics...**  
Uniform look

### Application

EverGuard® TPO preformed accessories are designed for use with GAF EverGuard® TPO single-ply membranes. The preformed accessories may be installed on mechanically attached, fully adhered, or self-adhered EverGuard® TPO roofing systems. Preformed accessories are installed using conventional techniques. See published application and specifications manual for detailed instructions.

### Product Information

EverGuard® Square Tube Wraps are constructed from EverGuard® reinforced 45 mil membrane. Three standard sizes of Square Tube Wrap are available. They are split and can be wrapped around square and rectangular roof structures such as machinery screen supports. A stainless-steel clamp is included to assist in sealing the top edge of the wrap.



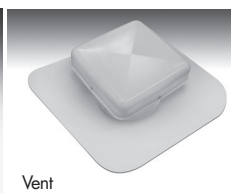
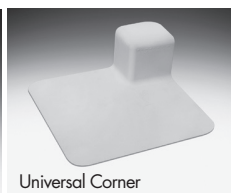
## Square Tube Wrap

- Available in 3 standard sizes
- Custom sizes also available\*
- Includes stainless-steel clamp for top edge seal

SHIPPING SPECIFICATIONS	
Pieces per box:	6
Weight per box:	6.0 lbs. (4" x 4")
	6.5 lbs. (4" x 6")
	7.0 lbs. (6" x 6")
Boxes per pallet:	24
PRODUCT SKUs	
EverGuard® TPO Square Tube Wrap 4" x 4"	8506920
EverGuard® TPO Square Tube Wrap 4" x 6"	8508920
EverGuard® TPO Square Tube Wrap 6" x 6"	8507920

\*Contact your local representative for details.

### Also Available...



Quality You Can  
Trust...From  
North America's  
Largest Roofing  
Manufacturer!™  
**gaf.com**



# EverGuard<sup>®</sup>TPO

SINGLE-PLY ROOFING SYSTEMS

## Roll Accessories

### Description

EverGuard<sup>®</sup> TPO single-ply roofing system roll accessories provide roofing contractors an easy-to-install, factory-built detail. EverGuard<sup>®</sup> roll accessories are constructed from GAF's proven, durable EverGuard<sup>®</sup> TPO single-ply reinforced membrane.

- **Cost effective...**  
Reduces installed costs
- **Improved reliability...**  
Factory-built accessories reduce risk of leaks and callbacks
- **Improved aesthetics...**  
Uniform look

### Application

EverGuard<sup>®</sup> TPO Expansion Joints are available in two prefabricated styles: roof-to-roof and roof-to-wall. They are heat-weldable to EverGuard<sup>®</sup> TPO membrane, forming a strong monolithic bond. See published Application and Specifications Manual for Detailed Instructions.

### Product Information

EverGuard<sup>®</sup> TPO Expansion Joints are provided in roof-to-roof or roof-to-wall configurations. Standard roll length is 50 feet. The membrane thickness is 60 mil nominal.

### Measuring Tips

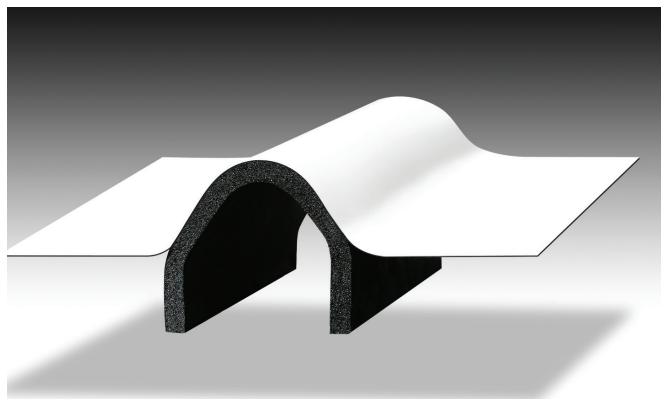
When ordering TPO Expansion Joints it is important to specify the correct bellows width.

1. Measure the opening distance of the joint.
2. Multiply this distance by 1.5.
3. Round up to next even number; this is the bellows width.

### Example:

Width = 3.325"  
Multiply 3.325 X 1.5 = 4.9875  
Order next even number larger  
bellows = 6"

### Also Available...



## TPO Expansion Joint

- Available in 5 standard bellows widths
- Available in 2 styles:
  - Roof-to-Wall
  - Roof-to-Roof
- Custom sizes and colors also available\*

\*Contact your local representative for details.

Roll Accessories  
TPO

Quality You Can  
Trust...From  
North America's  
Largest Roofing  
Manufacturer!<sup>™</sup>  
**[gaf.com](http://gaf.com)**



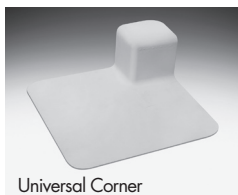
Fluted Corner



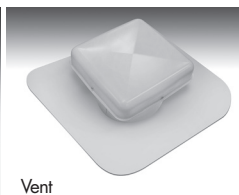
Inside Corner



Vent Boot



Universal Corner



Vent



# FLEXSEAL CAULK GRADE

## Description

TOPCOAT® FlexSeal Caulk Grade is a white solvent-based synthetic elastomeric sealant. FlexSeal is extremely flexible and durable, but with a higher viscosity formulation than Standard FlexSeal. Like all solvent-based products, the surface must be clean, completely free of moisture and residual contaminants before application. FlexSeal Caulk Grade is especially suited for use in any application where caulk is typically used. If a more fluid viscosity is desired, FlexSeal is also available in both a standard viscosity as FlexSeal and a low viscosity version FlexSeal LV.

## Uses

FlexSeal Caulk Grade is designed for use on metal, copper, concrete, wood, asphalt shingles, SBS, APP, EPDM, BUR, TPO and PVC substrates. Especially designed for use where elastomeric caulks are required; like term bar applications, or around clamping rings at penetrations. FlexSeal Caulk Grade may be used for cold weather applications provided that the material is stored properly and the substrate is dry prior to application. This product is easiest to apply at temperatures above 32°F (0°C). Substrate temperatures must be below 120°F (48.9°C) when applying product.

## Advantages

- Extremely flexible and durable
- Ideal for termination bar, railing, step flashings, or edge metal
- Durable and UV resistant; will not chalk, crack or peel
- Joint movement capability maximum  $\pm$  25%

- Bonds to multiple substrates including; metal, copper, concrete, wood, asphalt shingles, SBS, APP, EPDM, BUR, TPO, and PVC.
- Paintable
- Limited material warranty available for up to 10 years\*
- May be used in Guaranteed Projects up to 20 years\*\*
- Available in 10 oz. cartridges

For application questions, please contact GAFMC Contractor Services at 1-800-766-3411.

## Applicable Standards

FlexSeal Caulk Grade meets ASTM. D-412 and D-920; and is tested in accordance with D-2196 and D-1475.

## Application Considerations

FlexSeal Caulk Grade is not a structural component and it is not intended to bridge large voids. Joint depth should not exceed 1/2" wide by 1/2" deep (13 mm x 13 mm). If joint exceeds 1/2" (13 mm) deep, the sealant depth should be controlled by a closed cell backer rod. The number of joints and width of joints should be designed to accommodate a maximum of 25% movement. Note: Apply only as directed. Over-application may result in slumping, dripping, or unsightly appearance.

**Note:** Repair leaks promptly to avoid adverse effects, including mold growth.

\*See warranties and guarantees for complete coverage and restrictions.

\*\*When used as a part of a multi-ply system. FlexSeal Caulk Grade is a maintenance item and should be inspected periodically as a part of regular roof maintenance.

## TOPCOAT® FLEXSEAL CAULK GRADE TECHNICAL DATA

Application Rate:	Approximately 1/4 -3/8 inch (6 – 10 mm) bead
Application Method:	Caulk Gun
Application Temp (air, surface):	32°F - 120°F (0°C – 48.9°C)
Drying Time (varies by conditions):	24 – 48 hrs; Skins in less than 1 hour; Full Cure - approximately 48 hours
Total Solids (by weight):	77% $\pm$ 2%
Specific Gravity:	1.24 $\pm$ 0.1
Weight per Gallon:	10.3 $\pm$ 0.5 lbs
Viscosity (75°F (23.9°C)):	1,200,000 cps $\pm$ 10%
Tensile:	>250 psi (>1.72 N/sq mm)
Storage:	Recommended storage temperature range 50°F-90°F (10°C-32.2°C). Storage for continued periods outside this temperature range may shorten shelf life
<b>Shelf Life:</b>	Approximately 1 year.
Clean-up:	Mineral Spirits, Toluene, Xylene



# Sealant

Sealants  
TPO

## Description

EverGuard® One-Part Pourable Sealant is a one-part, moisture-cure, self-leveling sealant designed for use in pitch pans on single-ply roof systems. Since moisture-cure sealants cure with moisture in the air, it is suitable for application in damp and cold climates, as well as in dry climates. EverGuard® One-Part Pourable Sealant is solvent free, contains no isocyanates, and will not shrink upon curing. It does not "outgas" or bubble on damp surfaces as urethane sealants often do. EverGuard® One-Part Pourable Sealant is elastomeric and has excellent adhesion to most construction materials. It has a low durometer, which accommodates greater movement in penetration seals than typical urethane sealants.

## Use

EverGuard® One-Part Pourable Sealant is designed for use with the EverGuard® Pourable Sealer Pocket on new and existing TPO roofs to seal irregular penetrations, such as metal frames, wires, and pipes. Note: EverGuard® TPO Primer is required to prime the TPO surface before use.

## Advantages

- Solvent free – less than 25 g/L VOC
- 100% solid – will not shrink
- No outgassing on damp surfaces
- Self-leveling provides a smooth, professional finished look
- Good color stability
- 20-minute skinover time
- Paintable within 24 hours
- No special tools or mixing required
- Application at temperatures as low as 30°F (-1°C)



## One-Part Pourable Sealant

TYPICAL PROPERTIES	
VOC (max)	<25 grams/liter
Service Temperature	-40°F (-40°C) to 200°F (93.3°C)
Full Cure	Rate of cure is dependent on atmospheric conditions. Curing proceeds at a rate of ¼" (6.35 mm) a week at 70°F (22°C) and 50% relative humidity. Lower temperature and humidity will slow the rate of cure. Higher temperature and humidity will accelerate rate of cure. Depths of more than 2" (51 mm) will cure through in 2 to 3 months.
Skin Time	Approximately 20 minutes at 70°F (22°C) and 50% relative humidity.
Shrinkage	0%
Tensile Strength	146 lbf (217 kg/m)
Elongation	300% ± 25%
Density	8.9 ± .2 lb. per gallon (1.068 g/ml)

Quality You Can Trust...From North America's Largest Roofing Manufacturer!™

[gaf.com](http://gaf.com)

# **EverGuard<sup>®</sup>TPO** SINGLE-PLY ROOFING SYSTEMS

## Approvals & Certification

- Conforms to OTC Rule for Sealants and Caulks
- Meets requirements of California Regulations: CARB, BAAQMD, and SCAQMD
- Conforms to California Proposition 65
- Conforms to USDA Requirements for Non-food Contact

## Environmental Standards

LEED<sup>®</sup> 2.2 for New Construction and Major Renovations:

- Low-Emitting Materials (Section 4.1) 1 Point

NAHB Model Green Home Building Guidelines:

- 5 Global Impact Points

VOC Content:

- Less than 25 grams/liter ASTM D2369 EPA Method 24 (tested at 240°F [115°C])

## Application Temperature

EverGuard<sup>®</sup> One-Part Pourable Sealant can be applied at temperatures as low as 30°F (-1°C). In these colder temperatures, it is recommended to keep the material stored inside or in a truck before using.

## Application Instructions

Surface should be clean, dry, and free of any loose materials. Remove all previously applied caulk, mastic, cement, and other contaminants from penetrations with a cleaner. All roof deck voids are to be filled with FlexSeal<sup>™</sup> Sealant. Prime all surfaces with EverGuard<sup>®</sup> TPO Primer. Allow primer to dry prior to applying EverGuard<sup>®</sup> One-Part Pourable Sealant. Fill the EverGuard<sup>®</sup> Pourable Sealer Pocket with EverGuard<sup>®</sup> One-Part Pourable Sealant to the top of the pocket, ensuring that all voids are filled. See GAF's published application and specifications manual for complete details.

## Clean-up

Wet adhesive can be removed using a solvent, such as alcohol. Cured EverGuard<sup>®</sup> One-Part Pourable Sealant can be removed by abrading or scraping the substrate.

## Cure Time

EverGuard<sup>®</sup> One-Part Pourable Sealant is a moisture-cure sealant. Rate of cure is dependent on atmospheric conditions. Curing proceeds at a rate of ¼" (6 mm) a week at 70°F (22°C) and 50% relative humidity. Lower temperature and humidity will slow the rate of cure. Higher temperature and humidity will accelerate

rate of cure. Depths of more than 2" (51 mm) will cure through in 2 to 3 months.

## Packaging

- .053 gallon (2L) pouch
- 4 pouches/case
- 48 cases/pallet

## Color

White

## Storage

- Recommended storage is between 40°F–90°F (4°C–32.2°C). Store unopened containers in a cool, dry area. Protect unopened containers from water, heat, and direct sunlight. Although EverGuard<sup>®</sup> One-Part Pourable Sealant will not freeze, it is recommended to store indoors before using to ensure easy gunning and leveling.

## Shelf Life

One year from date of manufacture when stored in recommended conditions. Elevated temperature and high relative humidity may significantly reduce shelf life.

## Precautions

- Do not apply at temperatures below 30°F (-1°C).
- Do not use on TPO without EverGuard<sup>®</sup> TPO Primer.
- Do not use on Hypalon<sup>®</sup> membranes.
- Do not install if rain is anticipated within 4 hours.
- Do not use in areas subject to continuous water immersion.
- Do not use in areas where prolonged chemical exposure is anticipated.
- Do not prime bonding surfaces with asphalt primer.
- Use TOPCOAT<sup>®</sup> FlexSeal<sup>™</sup> Elastomeric Sealant as a "night sealant" around the base of the penetration. Do not use petroleum-based solvents, such as mineral spirits, for cleaning purposes.
- Maintain sealant at room temperature before applying to ensure easy gunning and leveling.
- Test and evaluate to ensure adequate adhesion.
- Dry all visible and standing water prior to applying sealant.

## For Application Questions

Contact GAF Technical Services at 1-800-766-3411 or visit [gaf.com](http://gaf.com).





# EVERGUARD® TPO Accessory

## TPO Accessories

### Description

Used to clean exposed or contaminated seams prior to heat welding to remove any residual soap or revitalize aged membranes.

### Application

- Do not use on "bag fresh" material that has been exposed for less than 12 hours unless it has been contaminated.
- Follow the guidance below for cleaning TPO:

*Light Contamination* — Membrane that has been exposed overnight or up to a few days to airborne debris, foot traffic, dew, or light precipitation can usually be cleaned with a white cloth moistened with EverGuard® TPO Cleaner. Be sure to wait for solvent to flash off prior to welding.

*Dirt-Based Contamination* — Membrane that is dirt encrusted will require the use of a low-residue cleaner, such as Formula 409®, and a mildly abrasive scrubbing pad to remove the dirt. This must be followed by cleaning with a white cloth moistened with EverGuard® TPO Cleaner. Be sure to wait for solvent to flash off prior to welding.



## Seam Cleaner

### Exposure-Based Contamination

— Membrane that is weathered or oxidized will require the use of EverGuard® TPO Cleaner and a mildly abrasive scrubbing pad to remove the weathered/oxidized top surface layer. This must be followed by cleaning with a white cloth moistened with EverGuard® TPO Cleaner. Unexposed membrane left in inventory for a year or more may need to be cleaned as instructed above. Be sure to wait for solvent to flash off prior to welding.

- VOC Content of 861 grams/liter.

SPECIFICATIONS	
Can size:	1 gallon
Cans per carton:	4
Weight per case:	33 lb. (14.96 kg)
Cases per pallet:	48
Product SKU	7793

Quality You Can  
Trust...From  
North America's  
Largest Roofing  
Manufacturer!™