

DATE: 8/17/2018

INVITATION TO BID
THIS IS NOT AN ORDER

Page: 4

BID NO.: 50-00123987

JEFFERSON PARISH
PURCHASING DEPARTMENT
P.O. BOX 9
GRETN, LA. 70054-0009
504-364-2678

VENDOR: 27118 BLANK BID COPY VENDOR

BUYER: DMEVANS

As per LSA-RS 47:301 et seq., all governmental bodies are excluded from payment of sales taxes to any Louisiana taxing body. Quotations shall be based on F.O.B. Agency warehouse or jobsite, anywhere within the Parish as designated by the Purchasing Department.

JEFFERSON PARISH reserves the right to cancel all or any part of an order if not shipped promptly. No charges will be allowed for parking or cartage unless specified in quotation. The order must not be filled at a higher price than quoted. JEFFERSON PARISH reserves the right to cancel at any time and for any reason by issuing a THIRTY (30) day written notice to the contractor.

JEFFERSON PARISH is expecting all products to be new and all work to be done in workman-like manner, according to standard practices. Any deviations or alteration from the specifications must be indicated on the bid form for each item and upon request, product data for same must be submitted by the time specified by the Purchasing Department.

DELIVERY: FOB JEFFERSON PARISH

INDICATE DELIVERY DATE ON EQUIPMENT AND SUPPLIES

3-4 wks

INDICATE STARTING TIME (IN DAYS) FOR CONSTRUCTION WORK

INDICATE COMPLETION TIME (IN DAYS) FOR CONSTRUCTION WORK

In the event that addenda are issued with this bid, bidders MUST acknowledge all addenda on the bid form. Bidder must acknowledge receipt of an addendum on the bid form as indicated. Failure to acknowledge any addendum on the bid form will result in bid rejection.

Acknowledge Receipt of Addenda: NUMBER: _____
NUMBER: _____
NUMBER: _____
NUMBER: _____

LOUISIANA CONTRACTOR'S LICENSE NO.: (if applicable) _____

*** ALL BIDDERS MUST COMPLETE SECTION BELOW ***	
FIRM NAME: <u>Cinisco</u>	
SIGNATURE: <u>[Signature]</u> (Must be signed here)	TITLE: <u>SALES</u>
PRINT OR TYPE NAME: <u>JEFF DELHUM</u>	
ADDRESS: <u>1840 L+A RD.</u>	
CITY, STATE: <u>METairie, LA</u>	ZIP: <u>70001</u>
TELEPHONE: <u>(504) 835-7319</u>	FAX: <u>(504) 832-0820</u>
EMAIL ADDRESS: <u>JEFF@Ciniscoinc.com</u>	

TOTAL PRICE OF ALL BID ITEMS: \$ 14974-

INVITATION TO BID FROM JEFFERSON PARISH - continued

BID NO.: 50-00123987

SEALED BID

ITEM NUMBER	QUANTITY	U/M	DESCRIPTION OF ARTICLES	UNIT PRICE QUOTED	TOTALS
			ONE TIME PURCHASE OF VARIOUS PLUMBING VALVES		
1	6.00	EA	0001 - Valve, gate, 3/4 in, class 125 wog, domestic, bronze, threaded,	56-	336-
			ASTM B-62, Misco no. T-113 (0620050) <u>APOLLO 102T34-LF</u>		
2	3.00	EA	0002 - Valve, check, 3 inch, 9-1/2 inch face to face, flanged, lever and weight,	872-	2616-
			ibbm, bronze disc facing, epoxy coated, stainless steel nuts and bolts, domestic, M & H no. 159-02 (0621670) <u>MILLIKEN 8001</u>		
3	2.00	EA	0003 - Valve, check, 6 inch, 17-1/2 inch face to face, flanged, lever and weight,	1381-	2762-
			ibbm, bronze disc facing, epoxy coated, stainless steel nuts and bolts, domestic, <u>Golden Anderson</u> figure no. 220 (0621730)		
4	2.00	EA	0004 - Valve, check, 4 inch, 13 inch face to face, flanged, cast iron body,	2588-	5176-
			domestic, air cushioned with lever and weight, epoxy coated, <u>Golden Anderson</u> Model No. 250-DS (0622100) <u>MILLIKEN 90001</u>		
5	4.00	EA	0005 - Valve, plug 6 inch x 10-1/2 inch face to face, flanged, eccentric cast iron body, solid ductile iron plug with nitrile elastomer coating, 100 percent port, nickel seat, <u>Milliken</u> no. 601N1FP-AG (0625020)	1021-	4084-

102T LF

Class 125, Non Rising Stem, NPT, Gate Valve

LEAD FREE



Job Name:	
Job Location:	
Engineer:	
Contractor:	
Tag:	
P.O.#:	
Rep:	
Wholesale Dist.:	

DESCRIPTION

The lead free* Apollo* Model 102T-LF (30LF Series) Gate Valve provides a "Made in the USA" alternative to globally sourced multi-turn valves for potable water service. These valves are cast, machined, assembled, and tested in South Carolina using proven ASTM quality lead free materials.

FEATURES

- Lead Free* – ANSI 3rd Party Certified
- Full Port Design
- Guided Solid Bronze Disc Wedge
- Adjustable Graphite Stem Packing
- Non-Rising Stem
- NPT Connection
- Screw-in Bonnet
- Rugged Malleable Iron Hand Wheel
- Back Seat Protection
- 100% Factory Tested
- **Cast, Machined and Assembled in the USA**
- **ARRA Compliant**

PERFORMANCE RATING

- Saturated Steam: 125 psi (8.6 Bar) to 353°F (178°C)
- Cold Working Pressure: 200 psi (13.8 Bar) at 100°F
- Temperature Range*: -20°F to 406°F
- * Valves should be in open position to allow complete drainage during freezing conditions.

APPROVALS

- MSS SP-80 - Design & Testing - Type 1
- MSS SP-139 - Copper Alloy Bronze Gate, Globe, Check Valves
- ASME B1.20.1 - Pipe Threads, General Purpose (Inch)
- CSA B51 CRN 0C14667.5
- NSF/ANSI 61 Water Quality
- NSF/ANSI 372 Lead Free

STANDARD MATERIALS LIST

BODY	Bronze, ASTM B584-C89836
BONNET	Bronze, ASTM B584-C89836
STEM	ASTM B21 UNS C46400
DISC WEDGE	ASTM B584-C89836
PACKING	Grafoil® (Asbestos Free)
PACKING NUT	Brass, ASTM B16
HAND WHEEL	Malleable Iron
NAMEPLATE	Aluminum

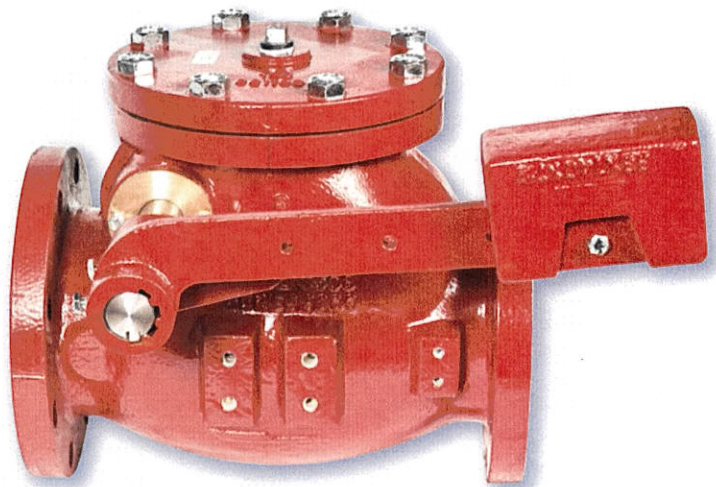
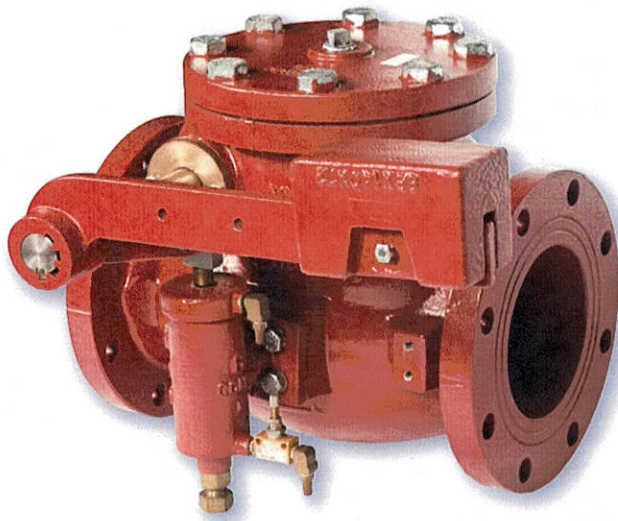
DIMENSIONS

MODEL NO.	PART NO.	SIZE (IN.)	HEIGHT OPEN (IN.)	LENGTH (IN.)	WEIGHT (LB.)	CV** (GPM)
102T14-LF	30LF-031-01	1/4"	3.29	1.76	.74	3.0
102T38-LF	30LF-032-01	3/8"	3.29	1.76	.71	6.0
102T12-LF	30LF-033-01	1/2"	3.56	2.03	.85	12.5
102T34-LF	30LF-034-01	3/4"	4.05	2.07	1.19	24.0
102T1-LF	30LF-035-01	1"	4.55	2.45	1.98	72.3
102T114-LF	30LF-036-01	1-1/4"	5.14	2.63	2.8	80.0
102T112-LF	30LF-037-01	1-1/2"	6.02	2.88	3.95	119.0
102T2-LF	30LF-038-01	2"	7.09	3.06	5.88	338.0
102T212-LF	30LF-039-01	2-1/2"	9.11	4.13	12.19	395.0
102T3-LF	30LF-030-01	3"	12.61	4.48	16.84	435.0

**Cv = flowrate at 1.0 psid

*LEAD FREE: The wetted surfaces of this product shall contain no more than 0.25% lead by weighted average. Complies with Federal Public Law 111-380. ANSI 3rd party approved and listed.

MILLIKEN®



CCNE CHECK VALVES

CCNE Model 8001 AWWA Swing Check Valve Outside Lever and Weight or Spring

Model 8001 swing check valves are of self-contained, free-swinging disc style with outside lever and weight or outside lever and spring. Valves conform to all standards set forth in AWWA C508, latest edition. Suitable for use in wastewater, water, sewage, oil and gas applications. Valves are produced with cast iron body, bronze or stainless steel seat rings, Buna-N or EPDM disc inserts, and hinge pins of corrosion resistant stainless steel. Internal and external epoxy coating conforming to AWWA C550 is a standard. Valves are designed for horizontal or vertical installations and for uninterrupted continuous service.

Features/Specs

- Full waterway
- Stainless steel hinge pin
- Flanges conform to ANSI B16.1 Class 125
- Lever and weight may be installed on either side
- Valves may be installed in vertical line with flow up
- Disc seat standard with with Buna-N insert for bubble tight shut off
- Body and disc seat rings are field replaceable
- Meets AWWA C508 standards
- Low zinc bronze or stainless steel seat rings
- ANSI B16.1: Cast iron pipe flanges and flanged fittings Class 125
- AWWA C508: Swing check valves for waterworks service, 2" through 24"
- 8 mils NSF 61 epoxy in and out

Sizes: 2" - 72"

Styles: Bronze to Bronze, Bronze to Buna-N, Stainless Steel to Buna-N

Uses: Water, Sludge, Sewer Service

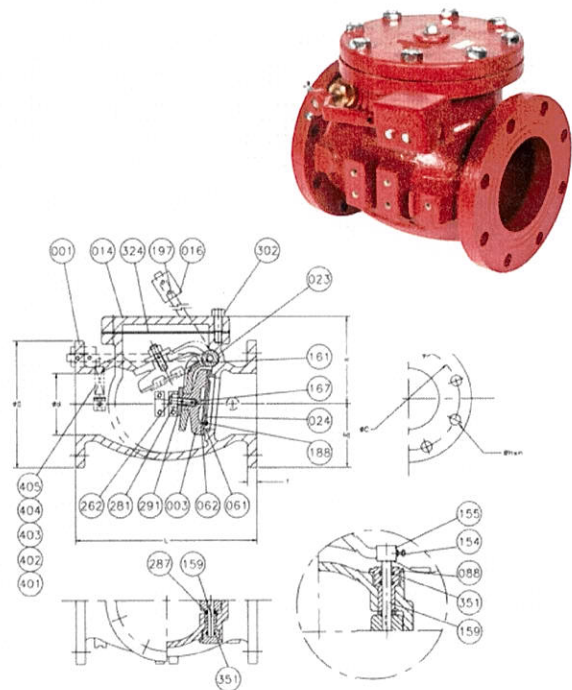
Test Pressures:

Size	Seat°	Shell
2" - 12"	200psi	400psi
14" - 72"	150psi	300psi

°rated working pressure

Size Od		ANSI B16.1 CL.125						
Inches	L	OD	OC	OH	n	T	H	H1
2	8	6	4-3/4	3/4	4	5/8	4-15/16	3
2-1/2	8-1/2	7	5-1/2	3/4	4	11/16	5-11/16	3-1/2
3	9-1/2	7-1/2	6	3/4	4	3/4	6-1/16	3-3/4
4	11-1/2	9	7-1/2	3/4	8	15/16	6-7/8	4-1/2
6	14	11	9-1/2	7/8	8	1	8-1/2	5-1/2
8	19-1/2	13-1/2	11-3/4	7/8	8	1-1/8	9-15/16	6-3/4
10	24-1/2	16	14-1/4	1	12	1-3/16	11-3/16	8
12	27-1/2	19	17	1	12	1-1/4	13-9/16	9-1/2
14	31	21	18-3/4	1-1/8	12	1-3/8	19-5/16	12-1/16
16	36	23-1/2	21-1/4	1-1/8	16	1-7/16	21-1/2	13-1/4
18	40	25	22-3/4	1-1/4	16	1-9/16	25-1/8	12-1/2
20	40	27-1/2	25	1-1/4	20	1-11/16	27	13-3/4
24	48	32	29-1/2	1-3/8	20	1-7/8	31-5/8	16
30	52-1/2	38-3/4	36	1-3/8	28	2-1/8	36-3/8	19-3/8
36	60-1/2	46	42-3/4	1-5/8	32	2-3/8	40	23

Dimensions for larger sizes available upon request.



NO.	Parts	Material	ASTM Designation
405	SPRING	STAINLESS STEEL	A276 GRADE 304
404	BOLT	STAINLESS STEEL	A276 GRADE 304
403	STRAIGHT BOLT	STAINLESS STEEL	A276 GRADE 304
402	BRACKET	STAINLESS STEEL*	A276 GRADE 304
401	NUT	STAINLESS STEEL	A276 GRADE 304
351	O-RING	RUBBER (BUNA N)	D2000 BK 707
324	COVER GASKET	RUBBER (BUNA N)	D2000 BK 807
302	COVER BOLT	ZINC COATED STEEL	A307 GRADE B
291	WASHER	BRASS	B21
287	SPACER	BRASS	B21
281	DISC NUT	BRASS	B21
262	DISC STUD	BRASS	B21
197	WEIGHT BOLT	ZINC COATED STEEL	A307 GRADE B
188	DISC SEAT BOLT	STAINLESS STEEL	A276 GRADE 304
167	ROLL PIN	STAINLESS STEEL	A276 GRADE 304
161	KEY	STAINLESS STEEL	A276 GRADE 304
159	HINGE PIN	STAINLESS STEEL	A276 GRADE 304
155	WEIGHT ARM	DUCTILE IRON	A536 GRADE 65-45-12
154	BOLT W/NUT	ZINC COATED STEEL	A307 GRADE B
088	SEAT NUT	BRASS	B21
062	DISC SEAT RING	RUBBER (BUNA N)	D2000 BK 807
061	BODY SEAT RING	BRONZE	B62
024	SEAT HOLDER	2"-6" CAST IRON	A126 CLASS B
024	SEAT HOLDER	8"+ DUCTILE IRON	A536 GR 65-45-12
023	DISC ARM	DUCTILE IRON	A536 GR 65-45-12
016	WEIGHT	CAST IRON	A126 CLASS B
014	COVER	CAST IRON	A126 CLASS B
003	DISC	CAST IRON	A126 CLASS B
001	BODY	CAST IRON	A126 CLASS B

*Chrome plated steel brackets supplied on larger size valves.

**For reference ONLY. Contact factory for detailed sales drawings.

CCNE Model 9001 AWWA Swing Check Valve Air Cushion with Outside Lever and Weight or Spring

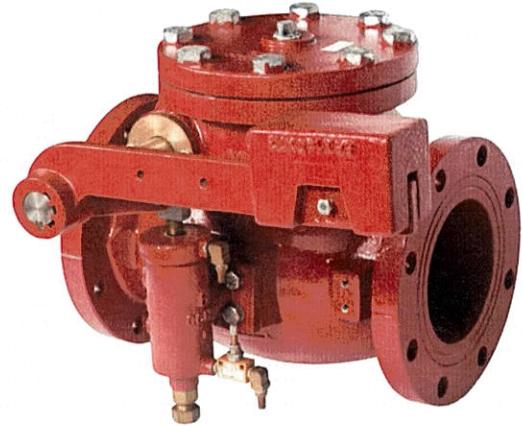
Features:

- Clear waterway
- Enlarged stainless steel hinge pin
- Flanges conform to ANSI B16.1 Class 125
- Lever and weight may be installed on either side
- Valves may be installed in vertical line with flow up
- Body and disc seat rings are field replaceable
- Disc seat standard with Buna-N insert for bubble tight shut off
- Totally enclosed bronze air cushion with stainless steel hardware
- Adjustable speed control
- Meets AWWA standards of dimensional standards of large pin cushion products
- 8 mils NSF 61 epoxy in and out

Sizes: 3" - 72"

Styles: Bronze to Bronze, Bronze to Buna-N, Stainless Steel to Buna-N

Uses: Water, Sludge, Sewer Service



Specification for Model 9001 with Air Cushion

General: Swing check valves are of self-contained, free swinging disc style, allowing a clear waterway. Valve disc swings freely open and is keyed to valve hinge pin without the use of pins. Valves conform to all standards set forth in AWWA C508, Latest Edition. Valve hinge pin are Stainless Steel and conform to the industry standards set forth for cushion valves. Manufacturer should have a minimum of ten years experience supplying air cushion AWWA C508 valves.

Referenced Standards:

- ANSI B16.1: Cast Iron Pipe Flanges and Flanged Fittings Class 125
- AWWA C508: Swing Check Valves for Waterworks Service, 2" through 24" NPS

Rating:

Valves are rated for 200psi on 12" and smaller, and 150psi on 14" and larger water working pressure. Valves are available in ductile iron for high pressure applications. All testing is done in accordance with AWWA C508.

End Configuration:

Valves have integrally cast flat face flanges in accordance with ANSI B16.1 Class 125.

Materials:

- All cast iron used conforms to ASTM A126 CLB
- Disc is of ductile iron conforming to ASTM A536 GR65-45-12
- Hinge Pins conform to ASTM A276 GR304
- Seat Rings are of Low Zinc Bronze conforming to ASTM B62 or of Stainless Steel conforming to ASTM A276 GR316

Coating: Internal and external coatings are two-component epoxy conforming to AWWA C550.

Design: All valves meet the standards of AWWA C508. All valves utilize a single disc mounted to a clevis hinge which prevents the disc from tipping. The valve disc swings open once the pump starts and allows for full flow. When closed the valve offers a tight shut-off. Valve body and cover are of Cast Iron, valve hinge is of Ductile Iron. Disc seating surface is either Bronze, Stainless Steel or of Buna-N depending on application. Valve seat rings are of Bronze or Stainless Steel.

The valve body has a bolted cover design and flanges are integral to body casting -not wafer style. Valve body and disc are designed in such a way as to minimize turbulence. Spring and cushion systems are externally mounted on the side of the body and do not come into contact with main line media.

Cushion systems are one-piece all bronze construction with integral pad mounted directly to the body with stainless steel fasteners. Air cushion shall consist of bronze and stainless steel components, be adjustable by means of a flow control valve and piston sleeve. Air cushion shall be totally enclosed with a metal end cap with an o-ring.

Installation: All valves are built for horizontal installation. However, all valves operate equally well in vertical installations. Prior to valve installation manufacturer should be notified of vertical mounting position so lever arm and weight can be properly positioned on valve.

CCNE Model 9001 AWWA Swing Check Valve Air Cushion with Outside Lever and Weight or Spring

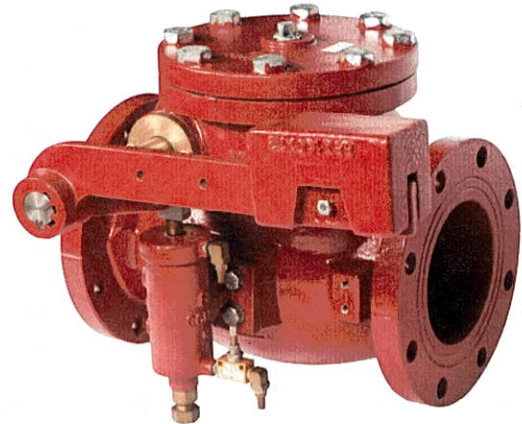
Features:

- Clear waterway
- Enlarged stainless steel hinge pin
- Flanges conform to ANSI B16.1 Class 125
- Lever and weight may be installed on either side
- Valves may be installed in vertical line with flow up
- Body and disc seat rings are field replaceable
- Disc seat standard with Buna-N insert for bubble tight shut off
- Totally enclosed bronze air cushion with stainless steel hardware
- Adjustable speed control
- Meets AWWA standards of dimensional standards of large pin cushion products
- 8 mils NSF 61 epoxy in and out

Sizes: 3" - 72"

Styles: Bronze to Bronze, Bronze to Buna-N, Stainless Steel to Buna-N

Uses: Water, Sludge, Sewer Service



Specification for Model 9001 with Air Cushion

General: Swing check valves are of self-contained, free swinging disc style, allowing a clear waterway. Valve disc swings freely open and is keyed to valve hinge pin without the use of pins. Valves conform to all standards set forth in AWWA C508, Latest Edition. Valve hinge pin are Stainless Steel and conform to the industry standards set forth for cushion valves. Manufacturer should have a minimum of ten years experience supplying air cushion AWWA C508 valves.

Referenced Standards:

- ANSI B16.1: Cast Iron Pipe Flanges and Flanged Fittings Class 125
- AWWA C508: Swing Check Valves for Waterworks Service, 2" through 24" NPS

Rating:

Valves are rated for 200psi on 12" and smaller, and 150psi on 14" and larger water working pressure. Valves are available in ductile iron for high pressure applications. All testing is done in accordance with AWWA C508.

End Configuration:

Valves have integrally cast flat face flanges in accordance with ANSI B16.1 Class 125.

Materials:

- All cast iron used conforms to ASTM A126 CLB
- Disc is of ductile iron conforming to ASTM A536 GR65-45-12
- Hinge Pins conform to ASTM A276 GR304
- Seat Rings are of Low Zinc Bronze conforming to ASTM B62 or of Stainless Steel conforming to ASTM A276 GR316

Coating: Internal and external coatings are two-component epoxy conforming to AWWA C550.

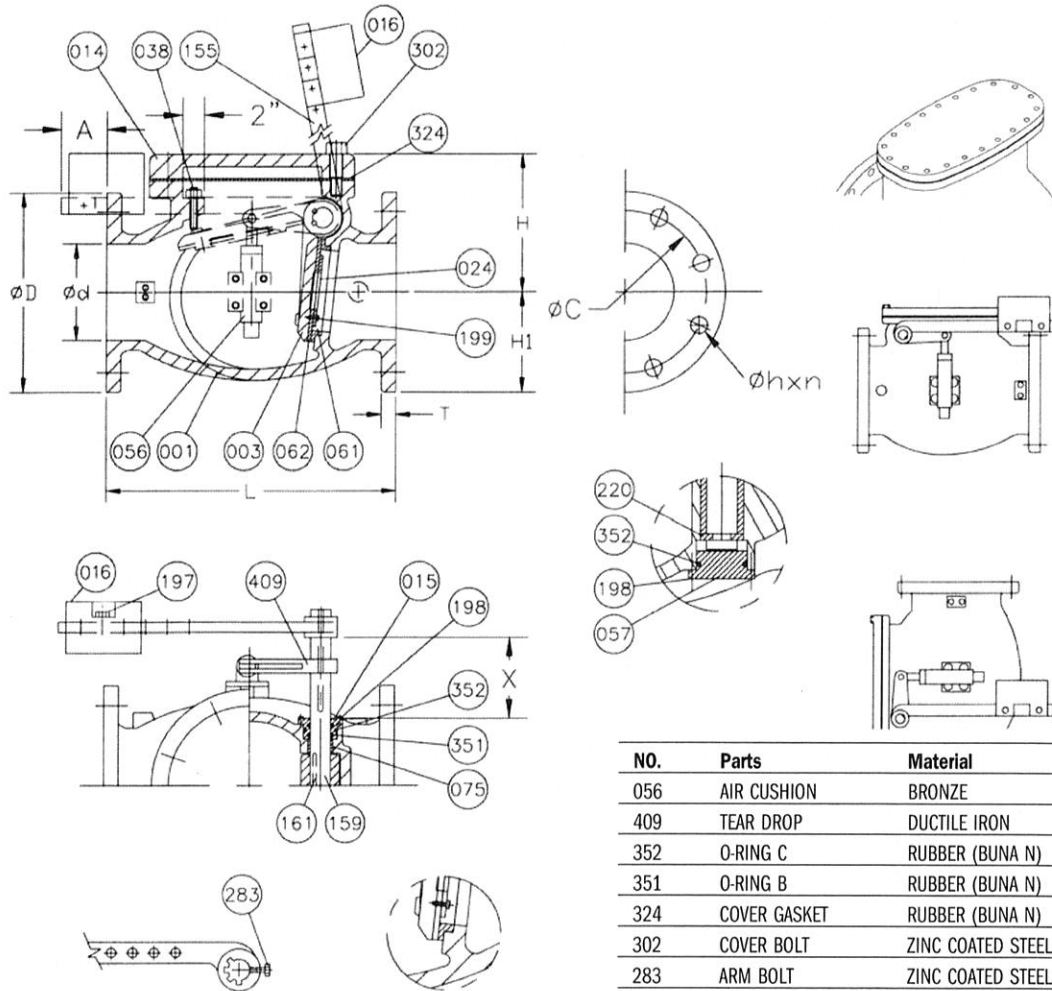
Design: All valves meet the standards of AWWA C508. All valves utilize a single disc mounted to a clevis hinge which prevents the disc from tipping. The valve disc swings open once the pump starts and allows for full flow. When closed the valve offers a tight shut-off. Valve body and cover are of Cast Iron, valve hinge is of Ductile Iron. Disc seating surface is either Bronze, Stainless Steel or of Buna-N depending on application. Valve seat rings are of Bronze or Stainless Steel.

The valve body has a bolted cover design and flanges are integral to body casting -not wafer style. Valve body and disc are designed in such a way as to minimize turbulence. Spring and cushion systems are externally mounted on the side of the body and do not come into contact with main line media.

Cushion systems are one-piece all bronze construction with integral pad mounted directly to the body with stainless steel fasteners. Air cushion shall consist of bronze and stainless steel components, be adjustable by means of a flow control valve and piston sleeve. Air cushion shall be totally enclosed with a metal end cap with an o-ring.

Installation: All valves are built for horizontal installation. However, all valves operate equally well in vertical installations. Prior to valve installation manufacturer should be notified of vertical mounting position so lever arm and weight can be properly positioned on valve.

CCNE Model 9001 AWWA Swing Check Valve Air Cushion with Outside Lever and Weight or Spring



Size Od		ANSI B16.1 CL.125						
Inches	L	OD	OC	OH	n	T	H	H1
3	11	7-1/2	6	3/4	4	3/4	6-3/8	3-3/4
4	13	9	7-1/2	3/4	8	15/16	7-3/8	4-1/2
6	16	11	9-1/2	7/8	8	1	9-3/16	5-1/2
8	19-1/2	13-1/2	11-3/4	7/8	8	1-1/8	10-7/8	6-3/4
10	22	16	14-1/4	1	12	1-3/16	13-5/16	8
12	26	19	17	1	12	1-1/4	15-9/16	9-1/2
14	30	21	18-3/4	1-1/8	12	1-3/8	21-1/16	12-1/16
16	30-1/2	23-1/2	21-1/4	1-1/8	16	1-7/16	24	13-5/16
18	33-1/2	25	22-3/4	1-1/4	16	1-9/16	27-9/16	14-5/8
20	40	27-1/2	25	1-1/4	20	1-11/16	31-5/16	15-3/8
24	46	32	29-1/2	1-3/8	20	1-7/8	35-1/4	17-7/8
30	60	38-3/4	36	1-3/8	28	2-1/8	36	23-1/16
36	63	46	42-3/4	1-5/8	32	2-3/8	41-15/16	27-11/16
42	70	53	49-1/2	1-5/8	36	2-5/8	46-3/4	32-1/8
48	76	59-1/2	56	1-5/8	44	2-3/4	53-1/8	35-1/2

Dimensions for larger sizes available upon request.

NO.	Parts	Material	ASTM Designation
056	AIR CUSHION	BRONZE	B62
409	TEAR DROP	DUCTILE IRON	A536 GR 65-45-12
352	O-RING C	RUBBER (BUNA N)	D2000 BK 707
351	O-RING B	RUBBER (BUNA N)	D2000 BK 707
324	COVER GASKET	RUBBER (BUNA N)	D2000 BK 807
302	COVER BOLT	ZINC COATED STEEL	A307 GRADE B
283	ARM BOLT	ZINC COATED STEEL	A307 GRADE B
220	SNAP RING	STAINLESS STEEL	A276 GRADE 304
199	SEAT HOLDER BOLT	STAINLESS STEEL	A276 GRADE 304
198	END PLATE BOLT	ZINC COATED STEEL	A307 GRADE B
197	WEIGHT BOLT	ZINC COATED STEEL	A307 GRADE B
161	KEY	STAINLESS STEEL	A276 GRADE 304
159	HINGE PIN	STAINLESS STEEL	A276 GRADE 304
155	WEIGHT ARM	DUCTILE IRON	A536 GR 65-45-12
075	BUSHING	BRONZE	B62
062	DISC SEAT RING	RUBBER (BUNA N)	D2000 BK 807
061	BODY SEAT RING	BRONZE	B62
057	END PLATE B	DUCTILE IRON	A536 GR 65-45-12
038	STOPPER	STAINLESS STEEL	A276 GRADE 304
024	SEAT HOLDER	3"-6" CAST IRON	A126 CLASS B
024	SEAT HOLDER	8"+ DUCTILE IRON	A536 GR 65-45-12
016	WEIGHT	CAST IRON	A126 CLASS B
015	END PLATE A	BRONZE	B62
014	COVER	CAST IRON	A126 CLASS B
003	DISC	DUCTILE IRON	A536 GR 65-45-12
001	BODY	CAST IRON	A126 CLASS B

* For reference ONLY. Contact factory for detailed sales drawings.