



JEFFERSON PARISH

DEPARTMENT OF PURCHASING

CYNTHIA LEE SHENG
PARISH PRESIDENT

RENNY SIMNO
DIRECTOR

September 2020

Changes to Jefferson Parish Bidding Information

The Jefferson Parish Purchasing Department would like to make vendors aware of the following changes:

Total Bid Price Must Include the Cost of Naming Jefferson Parish as Additional Insured:

Bidder acknowledges that Bidder recovered the cost of any required insurance in the contract price as required by La.R.S. 9:2780.1 and that Bidder recovered any such cost for the purposes of insuring an obligation to indemnify Jefferson Parish, defend Jefferson Parish, or hold Jefferson Parish harmless and that Bidder's indemnity liability is limited to the amount of the proceeds that are payable under the insurance policy or policies that Bidder has obtained.

Electronic Procurement: Beginning November 1, 2020, Jefferson Parish will no longer accept manual bid submissions; and will only accept bid submissions electronically via our e-Procurement system, Central Bidding. Central Bidding can be accessed by visiting either www.centralbidding.com or www.jeffparishbids.net. All bidders will be required to register with Central Bidding. Jefferson Parish vendors are able to register for free by accessing the following link:
<https://www.centrauctionhouse.com/registration.php>.

Probable Construction Cost: Per Jefferson Parish Administrative Policy, the probable construction cost is not revealed in the Jefferson Parish Bidding Documents. Jefferson Parish Administrative Policy has changed and a range of the probable construction cost will be stated in the Jefferson Parish bidding document, entitled Important Notice to All Bidders – Bid Requirements. Per Louisiana Public Bid Law, the probable construction cost will be read at the bid opening.

Insurance Requirement: All bidders must provide proof of valid insurance in the required amounts as stated in the Standard Insurance Requirements for bidding purposes. Failure to provide the proof of valid insurance in all of the required coverage amounts will result in bid rejection.

GENERAL GOVERNMENT BLDG. – 200 DERBIGNY ST., SUITE 4400, GRETN, LA 70053
OFFICE 504.364.2678

JOSEPH S. YENNI BLDG. – 1221 ELMWOOD PARK BLVD., SUITE 404, JEFFERSON, LA 70123
OFFICE 504.364.2678
EMAIL: PURCHASING@JEFFPARISH.NET WEBSITE: WWW.JEFFPARISH.NET



Bid Number 50 - 133671

**ONE TIME PURCHASE OF VALVE CHECKS
FOR JEFFERSON PARISH SEWERAGE DEPARTMENT**

2/26/2021 AT 11:00 AM

ATTENTION VENDORS!!!

Please review all pages and respond accordingly, complying with all provisions in the technical specifications and Jefferson Parish Instructions for Bidders and General Terms and Conditions. All bids must be received on the Purchasing Department's eProcurement site, www.jeffparishbids.net, by the bid due date and time.

**Buyer Name: Brenda Bellow, Buyer I
Buyer Email: bbellow@jeffparish.net
Buyer Phone: 504-364-2683**

DATE: 2/23/2021

INVITATION TO BID
THIS IS NOT AN ORDER

Page: 1

BID NO.: 50-00133671

JEFFERSON PARISH
PURCHASING DEPARTMENT
P.O. BOX 9
GRETN, LA. 70054-0009
504-364-2678

VENDOR: 27118 BLANK BID COPY VENDOR

BUYER: BBELLOW@jeffparish.net

Bids will be received until 11:00 AM, 2/26/2021 via online at www.jeffparishbids.net.

LATE BIDS WILL NOT BE ACCEPTED

NOTE: ONLY BIDS WRITTEN IN INK OR TYPEWRITTEN, AND PROPERLY SIGNED BY A MEMBER OF THE FIRM OR AUTHORIZED REPRESENTATIVE, WILL BE ACCEPTED. PENCIL AND/OR PHOTOSTATIC FIGURES OR SIGNATURES SHALL RESULT IN BID REJECTION. HOWEVER, ELECTRONIC SIGNATURES AS DEFINED IN LSA - R.S. 9:2602(8) ARE ACCEPTABLE. SIGNATURE MUST BE A SECURED DIGITAL SIGNATURE.

All bids submitted are subject to these instructions and general conditions and any special conditions and specifications contained herein, all of which are made part of this bid proposal reference. By submitting a bid, vendor agrees to comply with all provisions of Louisiana Law, as well be in compliance with the Jefferson Parish Code of Ordinances, Louisiana Code of Ethics, applicable Jefferson Parish ethical standards and Jefferson Parish Resolution No. 113646 and/or Resolution No. 113647 as amended. A copy of these resolutions may be obtained from the Office of the Parish Clerk, Suite 6700, Jefferson Parish General Government Building, 200 Derbigny Street, Gretna, LA 70053. You may also obtain a copy by visiting the Purchasing Department webpage at purchasing.jeffparish.net and clicking on On-line forms.

All vendors submitting bids should register as a Jefferson Parish vendor if not already yet registered. Registration forms may be downloaded from <http://purchasing.jeffparish.net> and by clicking on Vendor Information. Current W-9 forms with respective Tax Identification numbers and vendor applications may be submitted at any time; however, if your company is not registered and/or a current W-9 form is not on file, vendor registration is mandatory. Vendors may experience a delay in payment if your company is not a registered vendor with Jefferson Parish.

Jefferson Parish is exempt from paying sales tax under LSA-R.S. 47:301 (8)(c). All prices for purchases by Jefferson Parish of supplies and materials shall be quoted in the unit of measure specified and unless otherwise specified, shall be exclusive of state and local taxes. The price quoted for work shall be stated in figures. In the event there is a difference in unit prices and totals, the unit price shall prevail. Quotations shall be based on F.O.B. Delivered, anywhere within the Parish as designated by the Purchasing Department. JEFFERSON PARISH WILL ACCEPT ONE BID ONLY FROM EACH VENDOR. Items bid must meet specifications. JEFFERSON PARISH will accept one price for each item unless otherwise indicated. Two or more prices for one item will result in bid rejection. Bidders are required to complete, sign and return the bid form and/or complete and return the associated line item pricing forms as indicated. The price quoted for work shall be stated in figures. In the event there is a difference in unit prices and totals, the unit prices shall prevail.

JEFFERSON PARISH reserves the right to award contracts or place orders on a lump sum or individual item basis, or such combination, as shall in its judgment be in the best interest of JEFFERSON PARISH. Every contract or order shall be awarded to the LOWEST RESPONSIVE and RESPONSIBLE BIDDER, taking into consideration the CONFORMITY WITH THE SPECIFICATIONS and the DELIVERY AND/OR COMPLETION DATE.

PROTESTS: Only those vendors that submit bids in response to this solicitation may protest any element of the procurement, in writing to the Director of the Purchasing Department. Written protest must be received within 48 hours of the release of the bid tabulation by the Purchasing Department. After consultation, the Parish Attorney's Office will then respond to protests in writing. (For more information, please see Chapter 2, Article VII, Division 2, Sec. 2-914.1 of the Jefferson Parish Code of Ordinances.)

JEFFERSON PARISH reserves the right to cancel all or any part of an order if not shipped promptly. No charges will be allowed for parking or cartage unless specified in the quotation. The order must not be filled at a higher price than quoted. JEFFERSON PARISH reserves the right to cancel at any time and for any reason by issuing a THIRTY (30) day written notice to the contractor.

JEFFERSON PARISH requires all products to be new (current) and all work must be performed according to standard practices for the project. Unless otherwise specified, no aftermarket parts will be accepted. Unless otherwise specified, all workmanship and materials must have at least one (1) year warranty, in writing, from the date of delivery and/or acceptance of the project. Any deviations or alteration from the specifications must be indicated on the bid form for each item and upon request, product data for same must be submitted by the time specified by the Purchasing Department.

If this bid requires a pre-bid conference (see Additional Requirements section), bidders are advised that such conference will be held to allow bidders the opportunity to identify any discrepancies in the bid specifications and seek further clarification regarding instructions. The Purchasing Department will issue a written response to bidders' questions in the form of an Addendum.

All formal Addenda require written acknowledgment on the bid form by the bidder by the bidder placing the Addendum number in the appropriate section. Failure to acknowledge an Addendum on the bid form shall cause the bid to be rejected; JEFFERSON PARISH reserves the right to award bid to next lowest responsive and responsible bidder in this event.

USE OF BRAND NAMES AND STOCK NUMBERS: Where brand names and stock numbers are specified, it is for the purpose of establishing certain minimum standards of quality. Bids may be submitted for products of equal quality, provided brand names and stock numbers are specified. Complete product data may be required prior to award.

Quantities listed are for bidding purposes only. Actual requirements may be more or less than quantities listed.

INSTRUCTIONS FOR BIDDERS AND GENERAL CONDITIONS

Bidders are not to exclude from participation in, deny the benefits of, or subject to discrimination under any program or activity, any person in the United States on the grounds of race, color, national origin, or sex; nor discriminate on the basis of age under the Age Discrimination Act of 1975, or with respect to an otherwise qualified handicapped individual as provided in Section 504 of the Rehabilitation Act of 1973, or on the basis of religion, except that any exemption from such prohibition against discrimination on the basis of religion as provided in the Civil Rights Act of 1964, or Title VI and VII of the Act of April 11, 1968, shall also apply. This assurance includes compliance with the administrative requirements of the Revenue Sharing final handicapped discrimination provisions contained in Section 51.55 (c), (d), (e), and (k)(5) of the Regulations. New construction or renovation projects must comply with Section 504 of the 1973 Rehabilitation Act, as amended, in accordance with the American National Standard Institute's specifications (ANSI A17.1-1961).

Jefferson Parish and its partners as the recipients of federal funds are fully committed to awarding a contract(s) to firm(s) that will provide high quality services and that are dedicated to diversity and to containing costs. Thus, Jefferson Parish strongly encourages the involvement of minority and/or woman-owned business enterprises (DBE's, including MBE's, WBE's and SBE's) to stimulate participation in procurement and assistance programs.

IN ACCORDANCE WITH STATE REGULATIONS JEFFERSON PARISH OFFERS ELECTRONIC PROCUREMENT TO ALL VENDORS

This electronic procurement system allows vendors the convenience of reviewing and submitting bids online. This is a secure site and authorized personnel have limited read access only. Bidders are to submit electronically using this free service; while the website accepts various file types, one single PDF file containing all appropriate and required bid documents is preferred. Bidders submitting uploaded images of bid responses are solely responsible for clarity. If uploaded images/documents are not legible, then bidder's submission will be rejected. Please note all requirements contained in this bid package for electronic bid submission.

Please visit our E-Procurement Page at www.jeffparishbids.net to register and view Jefferson Parish solicitations. For more information, please visit the Purchasing Department page at <http://purchasing.jeffparish.net>.

ADDITIONAL REQUIREMENTS FOR THIS BID

PLEASE MATCH THE NUMBERS PRINTED IN THIS BOX WITH THE
CORRESPONDING INSTRUCTIONS BELOW.

13

1. All bidders must attend the MANDATORY pre-bid conference and will be required to sign in and out as evidence of attendance. In accordance with LSA R.S. 38:2212(I), all prospective bidders shall be present at the beginning of the MANDATORY pre-bid conference and shall remain in attendance for the duration of the conference. Any prospective bidder who fails to attend the conference or remain for the duration shall be prohibited from submitting a bid for the project.
2. Attendance to this pre-bid conference is optional. However, failure to attend the pre-bid conference shall not relieve the bidder of responsibility for information discussed at the conference. Furthermore, failure to attend the pre-bid conference and inspection does not relieve the successful bidder from the necessity of furnishing materials or performing any work that may be required to complete the work in accordance with the specification with no additional cost to the owner.
3. Contractor must hold current applicable JEFFERSON PARISH licenses with the Department of Inspection and Code Enforcement. Contractor shall obtain any and all permits required by the JEFFERSON PARISH Department of Inspection and Code Enforcement. The contractor shall be responsible for the payment of these permits. All permits must be obtained prior to the start of the project. Contractor must also hold any and all applicable Federal and State licenses. Contractor shall be responsible for the payment of these permits and shall obtain them prior to the start of the project.
4. A LA State Contractor's License will be required in accordance with LSA R.S. 37-2150 et. seq. and such license number will be shown on the outside of the bid electronic envelope. Failure to comply will cause the bid to be rejected. When submitting the bid electronically, the license number must be entered in the appropriate field in the electronic procurement system. Failure to comply will cause the bid to be rejected.

INSTRUCTIONS FOR BIDDERS AND GENERAL CONDITIONS

5. It is the bidder's responsibility to visit the job site and evaluate the job before submitting a bid.
6. Job site must be clean and free of all litter and debris daily and upon completion of the contract. Passageways must be kept clean and free of material, equipment, and debris at all times. Flammable material must be removed from the job site daily because storage will not be permitted on the premises. Precaution must be exercised at all times to safeguard the welfare of JEFFERSON PARISH and the general public.
7. PUBLIC WORKS BIDS: All awards for public works in excess of \$5,000.00 will be reduced to a formal contract which shall be recorded at the contractor's expense with the Clerk of Court and Ex-Officio Recorder of Mortgages for the Parish of Jefferson. A price list of recordation costs may be obtained from the Clerk of Court and Ex-Officio Recorder of Mortgages for the Parish of Jefferson. All awards in excess of \$25,000.00 will require both a performance and a payment bond. Unless otherwise stated in the bid specifications, the performance bond requirements shall be 100% of the contract price. Unless otherwise state in the bid specifications, the payment bond requirements shall be 100% of the contract price. Both bonds shall be supplied at the signing of the contract.
8. NON-PUBLIC WORKS BIDS: A performance bond will be required for this bid. The amount of the bond will be 100% of the contract price unless otherwise indicated in the specifications. The performance bond shall be supplied at the signing of the contract.
9. NON-PUBLIC WORKS BIDS: A payment bond will be required for this bid. The amount of the bond will be 100% of the contract price unless otherwise indicated in the specifications. The payment bond shall be supplied at the signing of the contract.
10. All bidders must comply with the requirements stated in the attached "Standard Insurance Requirements" sheet attached to this bid solicitation. Failure to comply with this instruction will result in bid rejection.
11. A bid bond will be required with bid submission in the amount of 5% of the total bid, unless otherwise stated in the bid specifications. All sureties must be in original format (no copies). When submitting a bid online, vendors must submit an electronic bid bond through the respective online clearinghouse bond management system(s) as indicated in the electronic bid solicitation on Central Auction House. No scanned paper copies of any bid bond will be accepted as part of the electronic bid submission.
12. This is an as needed basis contract. JEFFERSON PARISH makes no representations on warranties with regard to minimum guaranteed quantities unless otherwise stated in the bid specifications.
13. Freight charges should be included in total cost when quoting. If not quoted FOB DELIVERED, freight must be quoted as a separate item. Bid may be rejected if not quoted FOB DELIVERED or if freight charges are not indicated on bid form.
14. PUBLIC WORKS BIDS - Completed, Signed and Properly Notarized Affidavits Required; This applies to all solicitations for construction, alteration or demolition of public buildings or projects, in conformity with the provisions contained in LSA-RS 38:2212.9, LSA-RS 38:2212.10, LSA-RS 38:2224, and Sec 2-923.1 of the Jefferson Parish Code of Ordinances. For bidding purposes, all bidders must submit with bid submission COMPLETED, SIGNED and PROPERLY NOTARIZED Affidavits, including: Non-Conviction Affidavit, Non-Collusion Affidavit, Campaign Contribution Affidavit, Debt Disclosures Affidavit and E-Verify Affidavit. For the convenience of vendors, all affidavits have been combined into one form entitled PUBLIC WORKS BID AFFIDAVIT. This affidavit must be submitted in its original format, and without material alteration, in order to be compliant and for the bid to be considered responsive. A scanned copy of the completed, signed and properly notarized affidavit may be submitted with the bid, however, the successful bidder must submit the original affidavit in its original format and without material alteration upon contract execution. Failure to comply will result in the bid submission being rejected as non-responsive. The Parish reserves the right to award bid to the next lowest responsive and responsible bidder in this event.
15. NON PUBLIC WORK BIDS - Completed, Signed and Properly Notarized Affidavits Required in conformity with the provisions contained in LSA - RS 38:2224 and Sec 2-923.1 of the Jefferson Parish Code of Ordinances. For bidding purposes, all bidders must submit with bid submission COMPLETED, SIGNED and PROPERLY NOTARIZED Affidavits, including: Non-Collusion Affidavit, Debt Disclosures Affidavit and Campaign Contribution Affidavit. For the convenience of vendors, all affidavits have been combined into one form entitled NON PUBLIC WORKS BID AFFIDAVIT. This affidavit must be submitted in its original format, and without material alteration, in order to be compliant and for the bid to be considered responsive. A scanned copy of the completed, signed and properly notarized affidavit may be submitted with the bid, however, the successful bidder must submit the original affidavit in its original format and without material alteration upon contract execution. Failure to comply will result in the bid submission being rejected as non-responsive. The Parish reserves the right to award bid to the next lowest responsive and responsible bidder in this event.

INSTRUCTIONS FOR BIDDERS AND GENERAL CONDITIONS

16. The ensuing contract for this bid solicitation may be eligible for FEMA reimbursement and/or Federal funding/reimbursement. As such, the referenced appendix will be applicable accordingly and shall be considered a part of the bid documents. All applicable certifications must be duly completed, signed and submitted with bid submission. Failure to submit applicable certifications with bid submission will result in bid rejection.

17. For this project, the Contractor shall not pay any state or local sales or use taxes on materials and equipment which are affixed and made part of the immovable property of the project or which is permanently incorporated in the project (hereinafter referred to as "applicable materials and equipment"). All purchases of applicable materials or equipment shall be made by the contractor on behalf of and as the agent of Jefferson Parish (Owner), a political subdivision of the State of Louisiana. No state and local sales and use taxes are owed on applicable materials and equipment under the provisions of Act 1029 of the 1991 Regular Session - Louisiana Revised Statute 47:301(8)(c). Owner will furnish to contractor a certificate form which certifies that Owner is not required to pay such state or local sales and use taxes, and contractor shall furnish a copy of such certificate to all vendors or suppliers of the applicable materials and equipment, and report to Owner the amount of taxes not incurred.

It shall be the duty of every parish officer, employee, department, agency, special district, board, and commission: and the duty of every contractor, subcontractor, and licensee of the parish, and the duty of every applicant for certification of eligibility for a parish contract or program, to cooperate with the Inspector General in any investigation, audit, inspection, performance review, or hearing pursuant to Jefferson Parish Code of Ordinances Section 2-155.10(19). By submitting a bid, vendor acknowledges this and will abide by all provisions of the referenced Jefferson Parish Code of Ordinances.

DATE: 2/23/2021

INVITATION TO BID
THIS IS NOT AN ORDER

Page: 5

BID NO.: 50-00133671

JEFFERSON PARISH

PURCHASING DEPARTMENT
P.O. BOX 9
GRETN, LA. 70054-0009
504-364-2678

VENDOR: 27118 BLANK BID COPY VENDOR

BUYER: BBELLOW

As per LSA-RS 47:301 et seq., all governmental bodies are excluded from payment of sales taxes to any Louisiana taxing body. Quotations shall be based on F.O.B. Agency warehouse or jobsite, anywhere within the Parish as designated by the Purchasing Department.

JEFFERSON PARISH reserves the right to cancel all or any part of an order if not shipped promptly. No charges will be allowed for parking or cartage unless specified in quotation. The order must not be filled at a higher price than quoted. JEFFERSON PARISH reserves the right to cancel at any time and for any reason by issuing a THIRTY (30) day written notice to the contractor.

JEFFERSON PARISH is expecting all products to be new and all work to be done in workman-like manner, according to standard practices. Any deviations or alteration from the specifications must be indicated on the bid form for each item and upon request, product data for same must be submitted by the time specified by the Purchasing Department.

DELIVERY: FOB JEFFERSON PARISH

INDICATE DELIVERY DATE ON EQUIPMENT AND SUPPLIES

5-10 BUSINESS DAYS

INDICATE STARTING TIME (IN DAYS) FOR CONSTRUCTION WORK

INDICATE COMPLETION TIME (IN DAYS) FOR CONSTRUCTION WORK

In the event that addenda are issued with this bid, bidders MUST acknowledge all addenda on the bid form. Bidder must acknowledge receipt of an addendum on the bid form by placing the addendum number as indicated. Failure to acknowledge any addendum on the bid form will result in bid rejection.

Acknowledge Receipt of Addenda: NUMBER: _____
NUMBER: _____
NUMBER: _____
NUMBER: _____

LOUISIANA CONTRACTOR'S LICENSE NO.: (if applicable) _____

*** ALL BIDDERS MUST COMPLETE SECTION BELOW ***

FIRM NAME: VSI WATERWORKS LLC

SIGNATURE:

(Must be signed here)

Christopher Keeling

TITLE: ENGINEERING MANAGER

PRINT OR TYPE NAME:

CHRISTOPHER KEELING

ADDRESS: 1205 ALPHA DR

CITY, STATE: ALPHARETTA, GA

ZIP: 30004

TELEPHONE: (770) 740-0800

FAX: (770) 740-8777

EMAIL ADDRESS: CKEELING@VALVESOLUTIONS.COM

TOTAL PRICE OF ALL BID ITEMS: \$ 6,705

DATE: 2/23/2021

INVITATION TO BID FROM JEFFERSON PARISH - continued

Page: 6

BID NO.: 50-00133671

SEALED BID

ITEM NUMBER	QUANTITY	U/M	DESCRIPTION OF ARTICLES	UNIT PRICE QUOTED	TOTALS
1	3.00	EA	<p>ONE TIME PURCHASE OF VALVE CHECKS FOR JEFFERSON PARISH SEWERAGE DEPARTMENT</p> <p>0001 - Valve, check, 12 in, 27-1/2 in face to face, lever and weight, lbbm, bronze disc facing, epoxy coat, stainless steel bolts/nuts, domestic M & H no. 159-02 (0621760)</p> <p>12-INCH VSI SERIES CVI SWING CHECK VALVE. 27-1/2 IN FACE TO FACE, LEVER AND WEIGHT, IBBM, BRONZE DISC FACING, EPOXY COATED, STAINLESS STEEL BOLTS/NUTS, DOMESTIC (FAR 52.225 "BUY AMERICAN" COMPLAINT)</p>	\$2,235	\$6,705



**SERIES CVI
AWWA C508
SWING CHECK VALVES
2"-48"**



Series CVI

Swing Check Valves
to AWWA C508



LIFTING LUGS & ACCESSORY HOLE

VSI check valve covers come standard with stainless steel lifting lugs for ease of install and movement in the field. They all also come standard with a tapped plug hole for accessory mounting such as pressure gauges.

NO FLAT GASKETS

Our replaceable seat check valves come standard with O-rings used in many locations. Here we use an O-ring to seal off the top access port for a long lasting and easily serviceable seal, with replacements available from almost all MRO suppliers.

AMBIDEXTROUS ARM MOUNTING

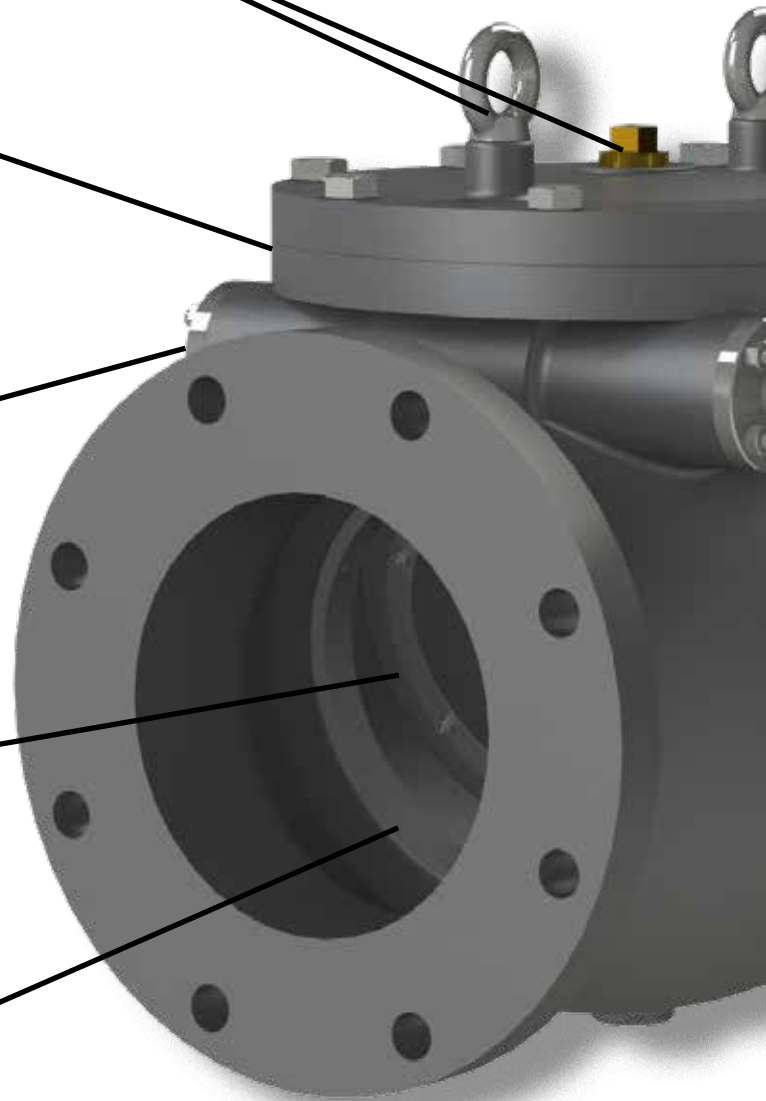
We offer the ability to mount the outside lever and weight on either side of the valve to fit in tight or unconventional spaces.

REPLACEABLE SEATS

VSI offers these valves with numerous options for seating surfaces. Our rubber and metal seats are field replaceable with common hand tools for ease of service. In the replaceable seat version of the CVI the rubber seats come standard with a stainless-steel retainer.

VERSATILE BODY SEAT

The body seat is available in multiple material options and is field serviceable also. In the replaceable seat version of the CVI it is retained by stainless steel hardware.





STAINLESS HARDWARE

Valves come standard with stainless steel 316 hardware for long service life in buried/submerged and harsh service conditions. Additional options available for corrosive and extreme exposures.

SHAFT OPTIONS

The shaft comes standard as stainless steel 17-4PH with many other options for harsh environments. The shaft is sealed on each end with rubber seals backed by stainless steel glands.

HEX MOUNTED LEVER AND WEIGHT

The outside lever and weight is affixed to the shaft via a hex shape with a tightening screw to eliminate all slop and long term wear on the assembly. This also allows for mounting in different angles to facilitate both horizontal and vertical pipe installation.

MOUNTS WITH CUSHIONING OPTIONS

Side mounted air and oil cushioning equipped with limit switches are available on the VSI check valve range. We have custom engineered the cushioning for the CVI to give a sturdy and economical option valve control.

EPOXY COATING

VSI's check valve is fully coated with a 2-part epoxy (NSF) conforming to AWWA C550.

Series CVI

Swing Check Valves
to AWWA C508



The VSI Advantage

VSI CHECK VALVE ADVANTAGES

All Series CVI Replaceable Seat Check Valves come standard with the far superior Ductile Iron body and disc. The higher strength of Ductile Iron compared to Cast Iron allows all valves up to 24" to be rated to a full 200 psi or more. By utilizing heavy duty thick wall castings to AWWA C508 standards and modern Ductile Iron as the material, valves are able to have high operating pressures and extended service lives.

Size	AWWA C508	Series CVI
2"-12"	175psi	250psi
14"-24"	150psi	200psi

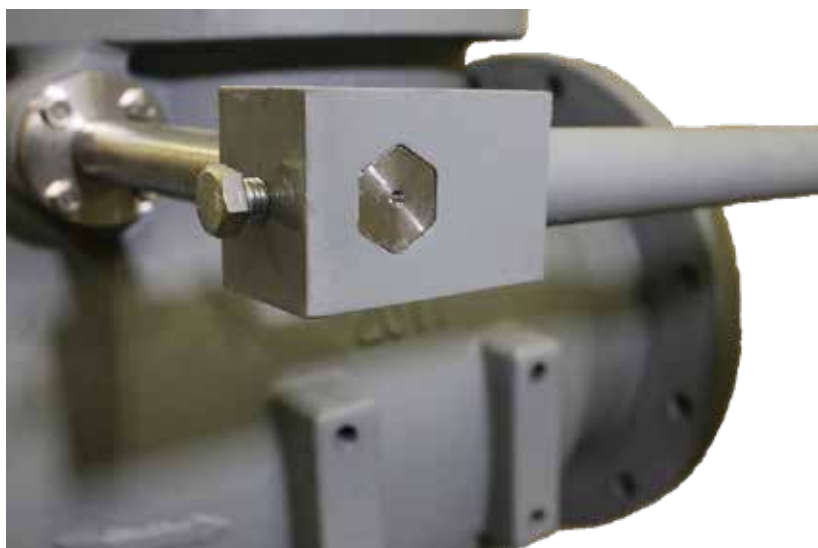


EASY TO SERVICE

VSI's series CVI Replaceable Seat Check Valves come with a replaceable rubber or metal disc seats for ease of service in the field. This allows for ease of field maintenance, without removing the valve from the pipeline, when combined with the large top service cover. This also allows for flexibility when picking a resilient seat material - high temperature or other custom seats can be fit and valves shipped the same day in some cases.

As standard, all series CVI Replaceable Seat Check Valves feature a stainless steel 17-4PH shaft. Shafts are able to be placed on either side of the valve allowing for ambidextrous mounting for any tight space and for vertical or horizontal installation. Lever and Weights are mounted securely on a hex end with retaining screw to ensure zero play in the assembly. Many other shaft options are available to meet project requirements.





IMPLEMENTATIONS

The Outside Lever and Weight Check Valve has long been the standard for low cost backflow prevention applications. The resilient seated variation of the Check Valve adds the characteristic of zero-leak to this list. The VSI check valve can easily be factory equipped with air/oil cushioning for any application where advanced valve control is necessary.

REPLACEABLE/INTERCHANGEABLE SEAT

The ductile iron disc in the Series CVI features a replaceable resilient seat retained by a single piece stainless steel 316 retaining ring or a single piece replaceable metal seat. The ability to change rubber compounds provides excellent sealing performance, and the ability to accommodate many different line media. Both the body seat and disc seat of metal and resilient seated valves are fully field serviceable



PAGE 5



AIR AND OIL CUSHION OPTIONS

The VSI check valve can easily be factory equipped with air/oil cushioning for any application where advanced valve control is necessary. We have engineered our custom fabricated cushioning assemblies for each of our valves sizes to produce the most cost effective and reliable products. Limit switches for remote valve position signaling are also available.

NOTE: VSI offers two versions of the series CVI. All features are not applicable to all valves. Consult with VSI for more information.



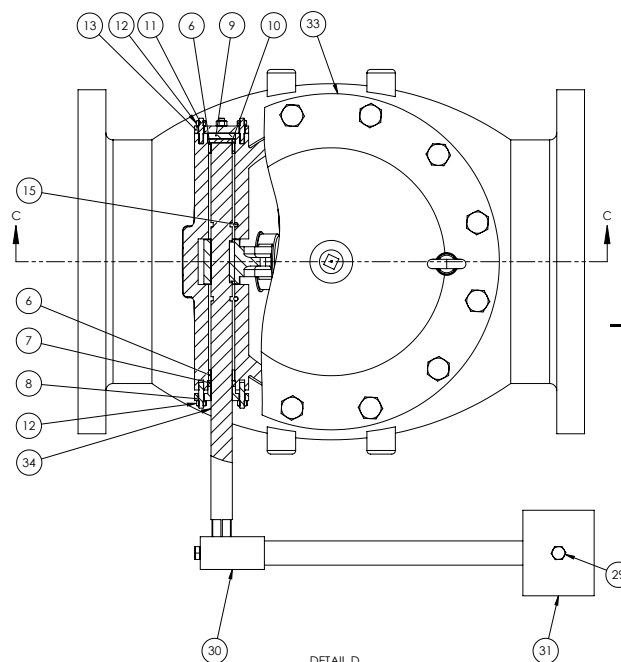
SAMPLE SPECIFICATION

Series CVI Replaceable Seat Swing Check Valves for Waterworks Service

- 1.1. This specification covers the design, manufacture, and testing of cast resilient and metal seated swing check valves 2 inch (75 mm) and larger under service pressure of up to 250 psig (1724 kPa).
- 1.2. Swing check valves shall be resilient or metal seated and of the outside lever and weight configuration.
2. GOVERNING STANDARDS
 - 2.1. All swing check valves shall be in full conformance with the design, manufacturing, and testing standards set forth by the American Water Works Association (AWWA) in Standard ANSI/AWWA C508.
3. CONNECTIONS
 - 3.1. Flanged valves shall conform to all standards of ANSI B16.1, Class 125 or Class 250.
 - 3.2. Flanged valves' lay length shall conform to ANSI/AWWA C508 Full Lay Length.
4. MARKINGS
 - 4.1. Each valve shall be marked with the manufacturer's name, valve size, body material, and pressure rating cast into the body of the valve. Lettering shall be a minimum of 1/2 inch-tall and project 1/10 inch from body.
 - 4.2. When requested swing check valves, shall be equipped with a tag identifying body, seat, and shaft material in addition to manufacturer's name, pressure rating, size, date of manufacturer, and date of testing.
5. DESIGN
 - 5.1. Valves shall be equipped with a rubber or metal seat, retained by stainless steel socket head cap screws.
 - 5.2. Valve shaft shall be made of stainless steel 304 at a minimum. It shall have bronze bushings and NBR seal rings on each end. Shaft shall be capable of being extended to either side of the valve.
 - 5.3. Valves shall be equipped with an O-ring sealing the top access port.
 - 5.4. Removable pins shall hold the shaft in place laterally. Use of retaining collars will not be permitted.
 - 5.5. The valve should have a smooth waterway equal to 100% \pm 5% the nominal pipe size.
 - 5.6. Valve seats shall be field serviceable using no manufacture specific or custom tool.
 - 5.7. Valves are designed for horizontal installation where the gravity will pull the valve closed with no flow. If valve is to be installed in vertical pipe the manufacture shall be informed at time of order.
 - 5.8. The valves shall be equipped with a mounting pad on both sides of the valve body for attaching flow control and position relaying accessories such as but not limited to; pneumatic cylinders for air cushioning, hydraulic cylinders for oil cushioning, or limit switches for open or closed position sensing.
 - 5.9. Flange dimensions and drilling should conform to ANSI/ASME B16.1 class 125 unless explicitly specified otherwise.
 - 5.10. Valves shall provide a bubble-tight shutoff for rubber seated valves at rated working pressure. Allowable leakage for metal seated valves is 1 oz/in/hr.
6. MATERIALS
 - 6.1. The valve body, and disc shall be constructed of ASTM A536 Ductile Iron.
 - 6.2. The rubber disc seat shall be made from a replaceable ring of resilient NBR or EPDM as specified. The metal disc seat shall commonly be made of either stainless steel 316 or bronze, with other materials available.
 - 6.3. The stem shall be made of ASTM A276 type 304 or 316 stainless steel.
 - 6.4. Shaft bearings shall be made of lead free Bronze conforming to ASTM B16.
 - 6.5. All coatings shall conform to AWWA C550, be holiday free, and have a minimum total dry film thickness of 10 mils.
 - 6.6. All valves shall have type 304 or 316 stainless steel interior and exterior hardware.
7. FLOW CONTROL OPERATORS
 - 7.1. All valves equipped with side mounted air/oil cushions will be mounted using stainless hardware and coated carbon steel fabricated bracket and arm unless otherwise specified.
 - 7.2. All cylinders are ISO 15552 with aluminum bodies and chrome plated steel rods, with stainless steel available upon request.
 - 7.3. Oil reservoirs are to be mounted above the cylinder with an air valve pressurizing the system.
 - 7.4. Limit switched may be mounted to the cylinders upon request for open and closed signaling.
8. MANUFACTURER
 - 8.1. Swing check valves shall be VSI Series CVI as manufactured by Valve Solutions, Inc., Alpharetta, GA USA.
 - 8.2. All valves shall be warranted by manufacturer for a minimum of 12 months.

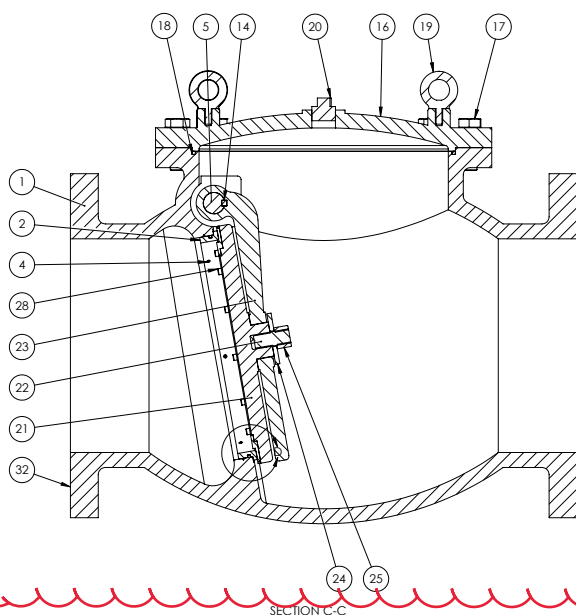
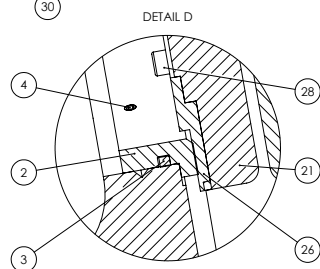


STANDARD MATERIALS OF CONSTRUCTION METAL SEATED



PART #:CVI08F-DD6BB-B31/O-Q

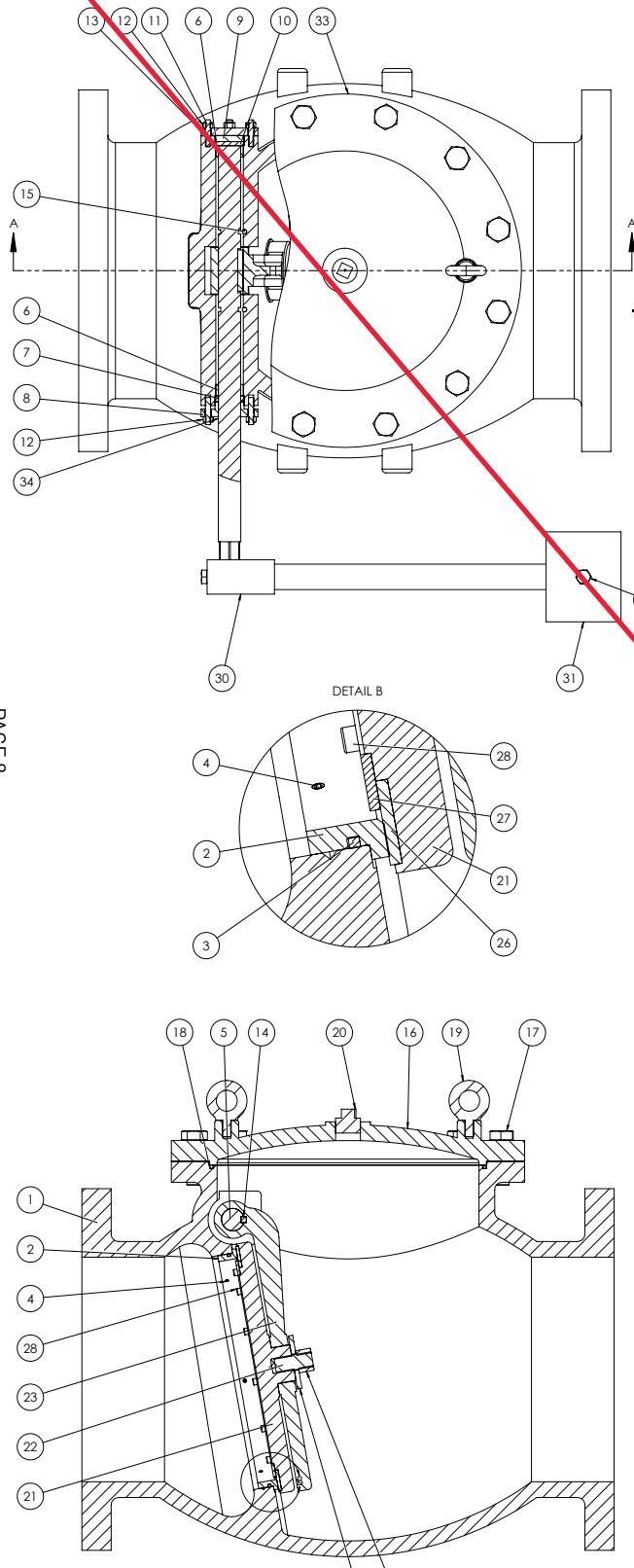
ITEM	DESCRIPTION	MATERIAL
1	BODY	DUCTILE IRON ASTM A536 65-45-12
2	BODY SEAT	BRONZE ASTM B584 C83600
3	O-RING	NBR
4	BODY SEAT SCREW	STAINLESS ASTM F593/F594 GROUP 2
5	SHAFT	STAINLESS 17-4 PH ASTM A693
6	BUSHING	BRONZE ASTM B16
7	SEAL RING	NBR
8	GLAND	AISI 304
9	SEAL	NBR
10	PLUG	AISI 304
11	STUD	STAINLESS ASTM F593/F594 GROUP 2
12	HEX NUT	STAINLESS ASTM F593/F594 GROUP 2
13	END COVER	AISI 304
14	KEY	AISI 304
15	FIXING PIN	AISI 316
16	COVER	DUCTILE IRON ASTM A536 65-45-12
17	HEX BOLT	STAINLESS ASTM F593/F594 GROUP 2
18	COVER O-RING	NBR
19	LIFTING EYE	COATED STEEL
20	PIPE PLUG	BRASS
21	DISC	DUCTILE IRON ASTM A536 65-45-12
22	DISC STUD	STAINLESS ASTM F593/F594 GROUP 2
23	INNER ARM	DUCTILE IRON ASTM A536 65-45-12
24	FLAT WASHER	STAINLESS ASTM F593/F594 GROUP 2
25	CASTLE NUT/COTTER PIN	STAINLESS ASTM F593/F594 GROUP 2
26	DISC SEAT	BRONZE ASTM B584 C83600
28	SH CAP SCREW	STAINLESS ASTM F593/F594 GROUP 2
29	HEX BOLT	STAINLESS ASTM F593/F594 GROUP 2
30	LEVER	COATED STEEL
31	COUNTER WEIGHT	COATED STEEL
32	COATING	AWWA C550 2-PART EPOXY (NSF)
33	TAG	ALUMINUM
34	ASSEMBLY LUBE	DOW CORNING 111 OR EQUAL (NSF)



Additional material options available as special order.



STANDARD MATERIALS OF CONSTRUCTION RUBBER SEATED



PART #:CVI08F-DD63N-B31/O-Q

ITEM	DESCRIPTION	MATERIAL
1	BODY	DUCTILE IRON ASTM A536 65-45-12
2	BODY SEAT	STAINLESS 316 ASTM A276
3	O-RING	NBR
4	BODY SEAT SCREW	STAINLESS ASTM F593/F594 GROUP 2
5	SHAFT	STAINLESS 17-4 PH ASTM A639
6	BUSHING	BRONZE ASTM B16
7	SEAL RING	NBR
8	GLAND	AISI 304
9	SEAL	NBR
10	PLUG	AISI 304
11	STUD	STAINLESS ASTM F593/F594 GROUP 2
12	HEX NUT	STAINLESS ASTM F593/F594 GROUP 2
13	END COVER	AISI 304
14	KEY	AISI 304
15	FIXING PIN	AISI 316
16	COVER	DUCTILE IRON ASTM A536 65-45-12
17	HEX BOLT	STAINLESS ASTM F593/F594 GROUP 2
18	COVER O-RING	NBR
19	LIFTING EYE	COATED STEEL
20	PIPE PLUG	BRASS
21	DISC	DUCTILE IRON ASTM A536 65-45-12
22	DISC STUD	STAINLESS ASTM F593/F594 GROUP 2
23	INNER ARM	DUCTILE IRON ASTM A536 65-45-12
24	FLAT WASHER	STAINLESS ASTM F593/F594 GROUP 2
25	CASTLE NUT/COTTER PIN	STAINLESS ASTM F593/F594 GROUP 2
26	DISC SEAT	BUNA-N (NBR)
27	DISC SEAT RETAINER	STAINLESS 316 ASTM A276
28	SH CAP SCREW	STAINLESS ASTM F593/F594 GROUP 2
29	HEX BOLT	COATED STEEL
30	LEVER	COATED STEEL
31	COUNTER WEIGHT	COATED STEEL
32	COATING	AWWA C550 2-PART EPOXY (NSF)
33	TAG	ALUMINUM
34	ASSEMBLY LUBE	DOW CORNING 111 OR EQUAL (NSF)

Additional material options available as special order.



DESIGN STANDARDS

Size Range	6"-48" Flanged End
Construction	AWWA C508 ASME B16.34 API 600
Coatings	AWWA C550*
Connections	ANSI B16.1 Class 125* ANSI B16.1 Class 250 ANSI B16.5 Class 150 ANSI B16.5 Class 300
Lay Length	AWWA C508 Appendix A Full ISO 5752
Classifications	150 PSIG 175 PSIG 200 PSIG 250 PSIG



American Water Works
Association

*Standard Option

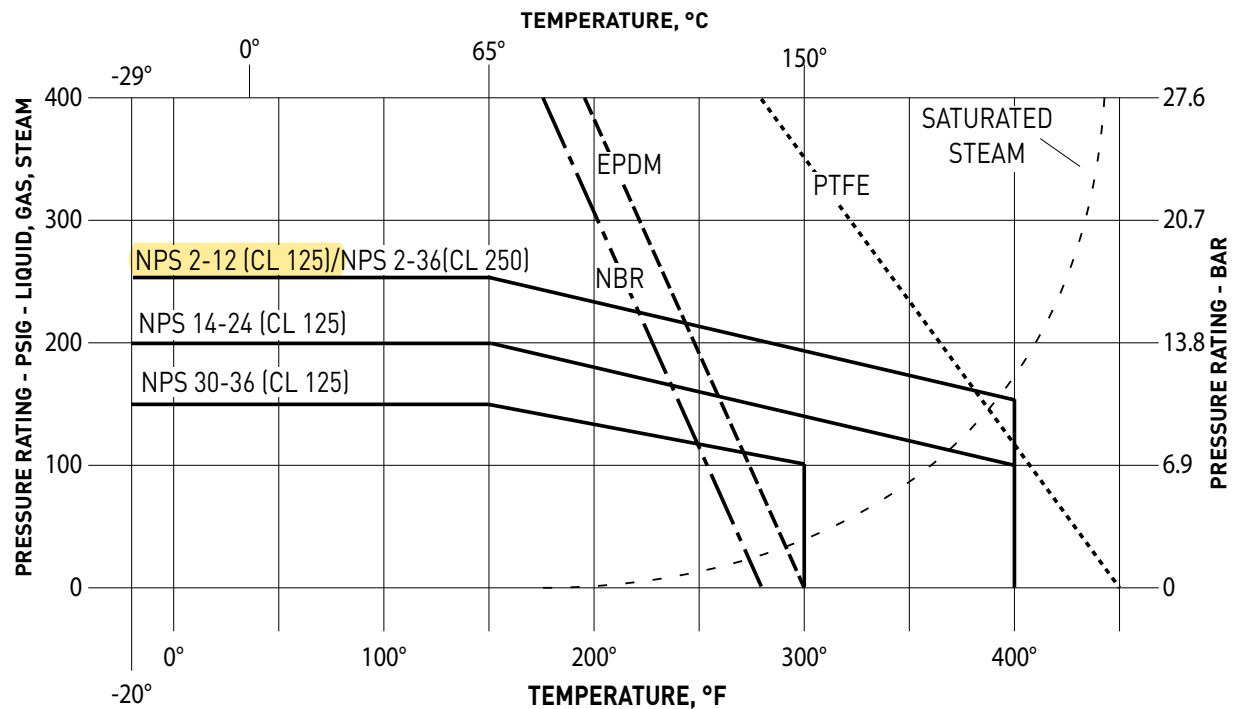
RESISTANCE GUIDE

Designation	Common Names	Composition	Min/Max Temperature Range	General Properties	Resistant to:	Attached by:
EPDM	EPDM, EPM	Ethylene-propylene-diene Monomer	-40F/250F	Excellent ozone, chemical, and aging resistance. Poor resistance to petroleum-based fluids	Animal and vegetable oils, ozone, strong and oxidizing chemicals.	Mineral oils and solvents, aromatic hydrocarbons
NBR	NBR, Buna-N	Nitrile-butadiene	-30F/225F	Excellent resistance to petroleum-based fluids. Good physical properties	Many hydrocarbons, fats, oils, greases, hydraulic fluids, chemicals	Ozone, ketones, esters, aldehydes, chlorinated and nitro hydrocarbons
FPM	FPM, Viton®	Hexafluoropropylene-vinylidene fluoride	-10F/400F	Excellent oil and air resistances both at low and high temperatures. Very good chemical resistance	All aliphatic, aromatic, and halogenated hydrocarbons, acids, animal and vegetable oils	Ketones, low molecular weight esters and nitro containing compounds
PTFE	PTFE, Teflon®	Polytetrafluoro-ethylene	-100F/450F	Excellent abrasion resistance and chemically inert	Acids, harsh inorganic and organic chemicals, oils, oxidizing agents, and solvents	Molten alkali metals and fluorine at high temperatures

NOTE: VSI offers two versions of the series CVI. All features are not applicable to all valves. Consult with VSI for more information.



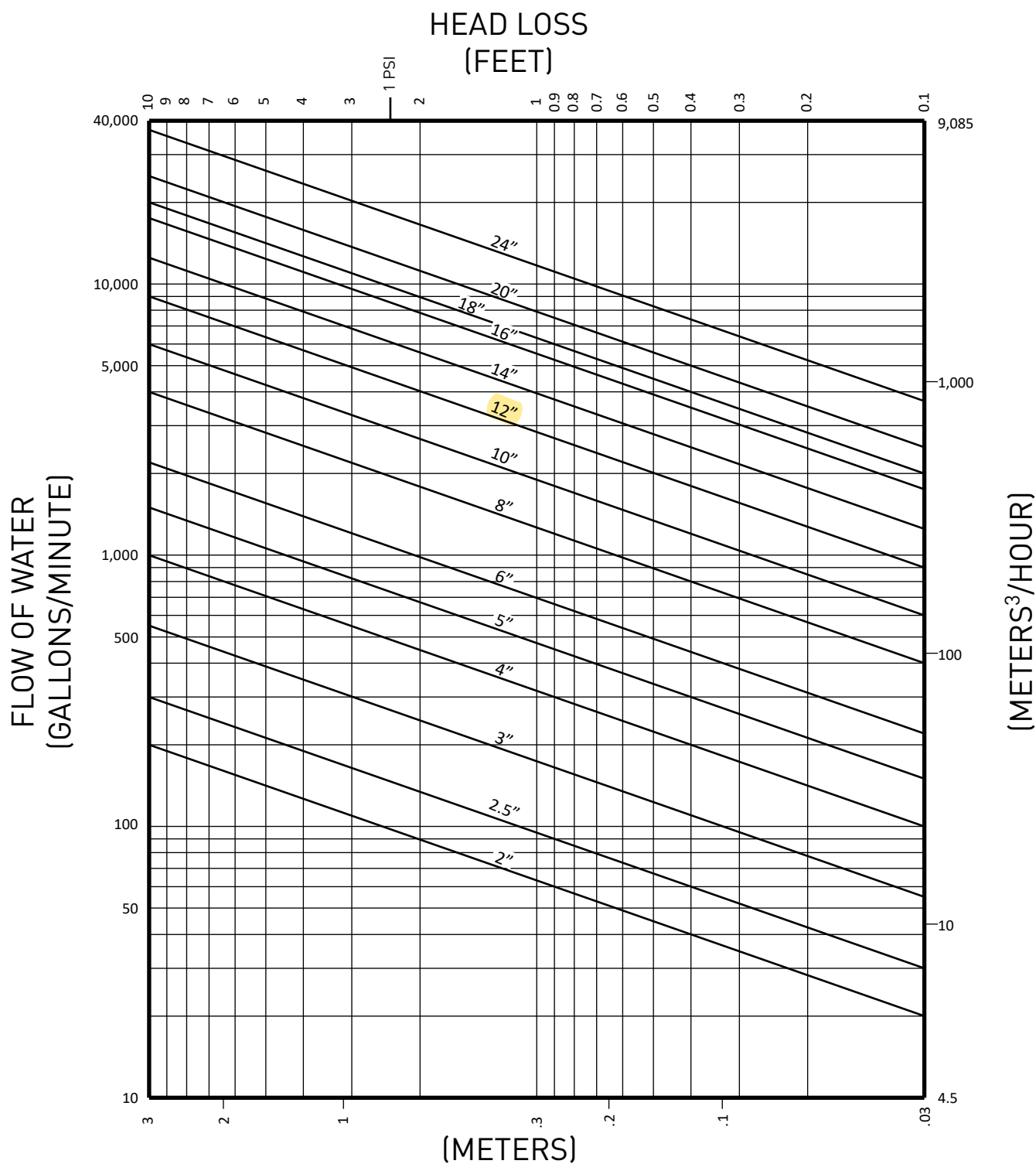
PRESSURE/TEMPERATURE RATINGS



In determining field pressure ratings for Series CVI Check Valves that are constructed of Ductile Iron the above chart should be used. Pressure cast on valve represents maximum seating pressure; maximum hydrostatic pressure is temperature dependent, and may be higher than nominal pressure rating.



CVI HEAD LOSS CHART



NPS	2	2.5	3	4	5	6	8	10	12	14	16	18	20	24
Cv	101	152	265	495	735	1120	1895	2992	4475	6008	8478	9835	1385	1865
K	1.40	1.50	1.56	1.62	1.07	1.61	1.58	1.56	1.54	1.56	1.59	1.57	1.55	1.49

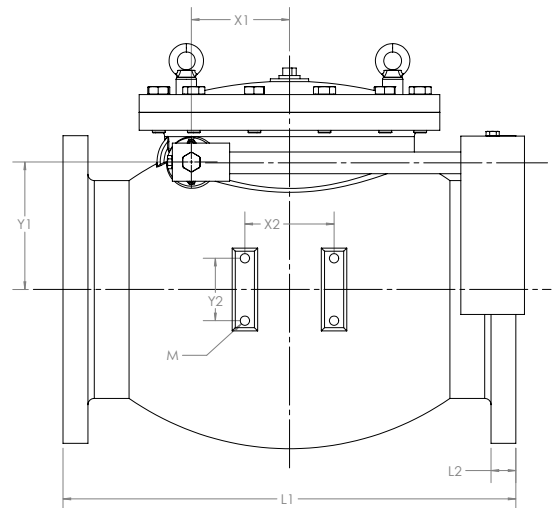
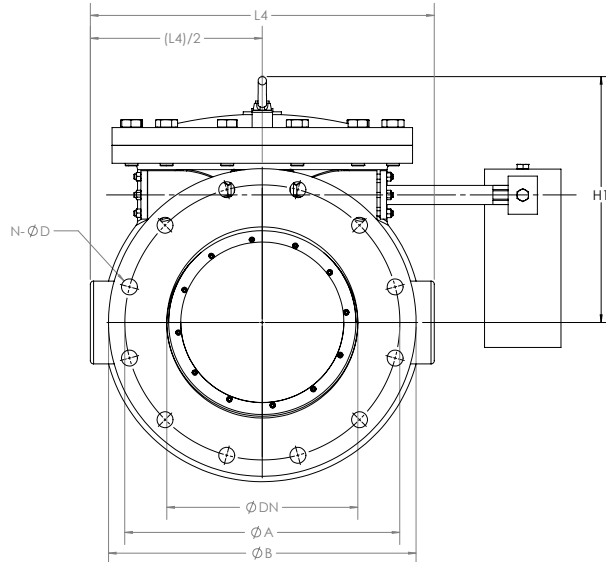
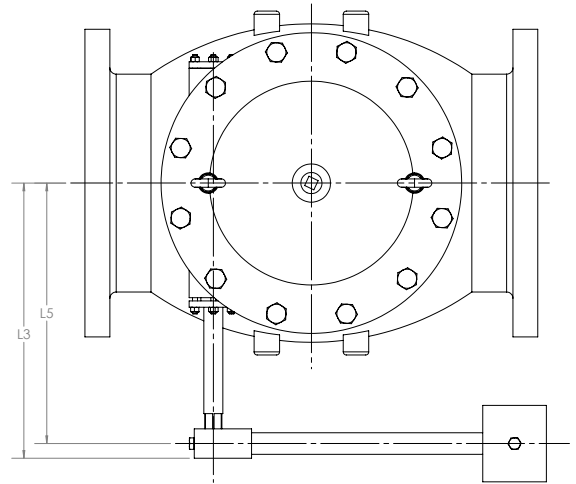
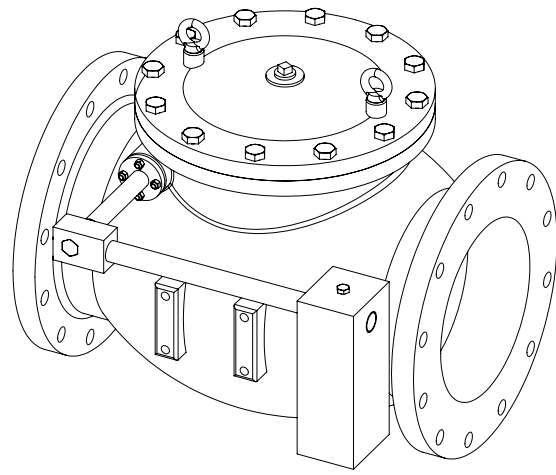
NOTE: VSI offers two versions of the series CVI. All features are not applicable to all valves.
Consult with VSI for more information.

Series CVI

Swing Check Valves
to AWWA C508



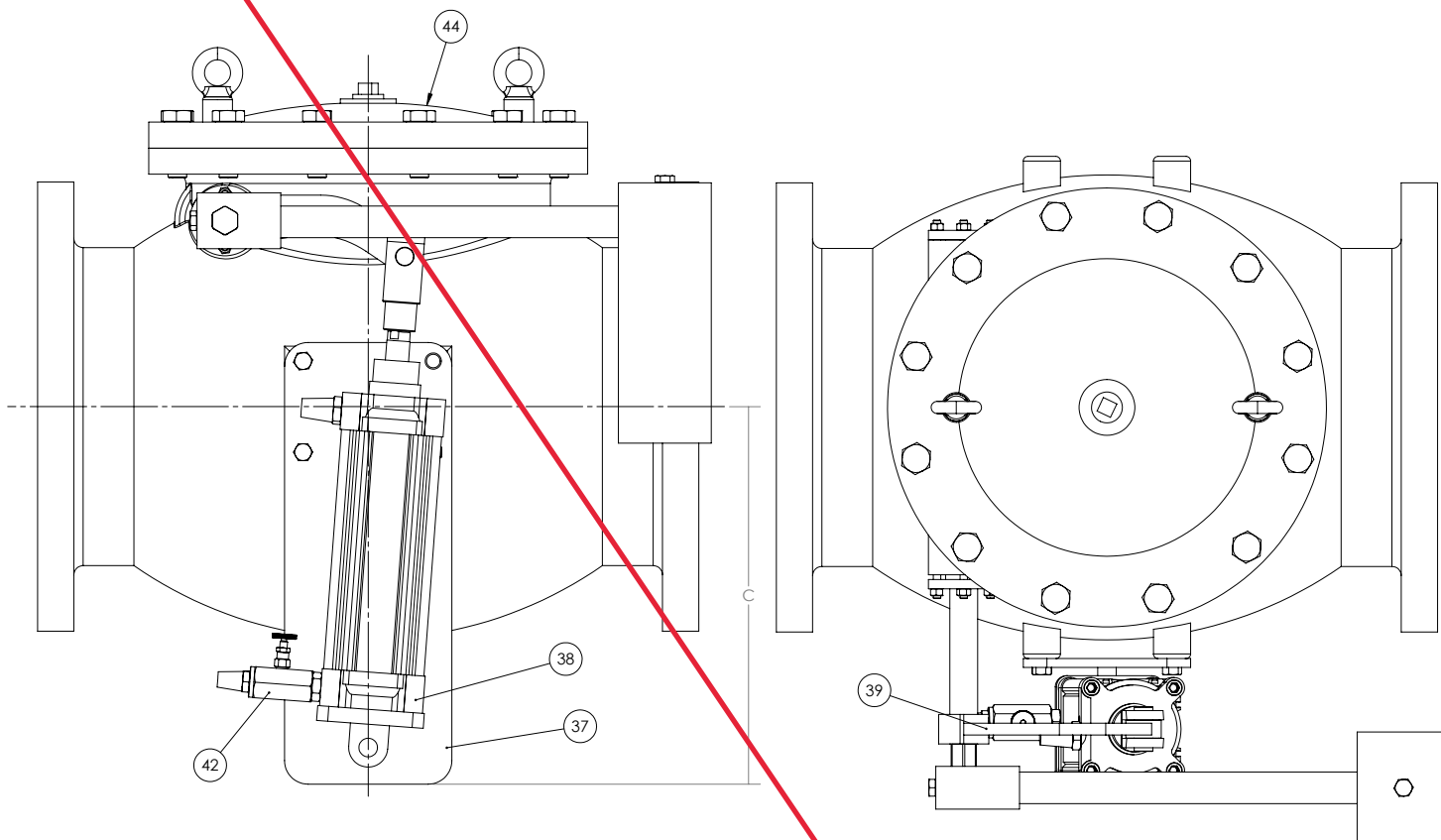
FLANGED WITH OUTSIDE LEVER AND WEIGHT



SIZE	ØA	ØB	H1	L1	L2	L3	L4	L5	N	ØD	X1	X2	Y1	Y2	M	WEIGHT (Lbs.)
4"	7.50	9.0	8.5	11.5	0.94	8.4	8.8	7.2	8	0.75	2.1	1.73	3.3	2.44	M12	102
6"	9.50	11.0	9.0	14.0	1.00	12.0	11.8	10.6	8	0.87	3.3	2.28	4.6	2.76	M12	165
8"	11.75	13.5	12.0	19.5	1.12	14.0	14.6	12.6	8	0.87	4.2	2.36	5.6	3.31	M12	308
10"	14.25	16.0	14.0	24.5	1.19	15.0	16.9	13.6	12	0.98	5.9	2.40	6.9	3.70	M12	450
12"	17.00	19.0	16.0	27.5	1.38	17.0	21.3	15.6	12	0.98	6.1	5.51	7.9	3.86	M16	653
14"	18.75	21.0	22.0	31.0	1.38	17.0	22.6	15.6	12	1.14	7.2	5.51	8.9	3.86	M16	1150
16"	21.25	23.5	23.0	36.0	1.44	24.0	26.4	22.6	16	1.14	8.1	4.84	10.6	4.25	M16	1500
18"	22.75	25.0	24.0	40.0	1.56	24.0	28.5	22.6	16	1.26	9.8	6.30	12.0	4.65	M16	1820
20"	25.00	27.5	24.0	40.0	1.69	28.0	30.7	26.4	20	1.26	10.4	6.30	13.2	5.83	M16	1942
24"	29.50	32.0	34.0	48.0	1.88	33.5	35.8	31.9	20	1.38	12.0	5.51	15.3	6.46	M16	3100



FLANGED WITH SIDE MOUNTED AIR CUSHION



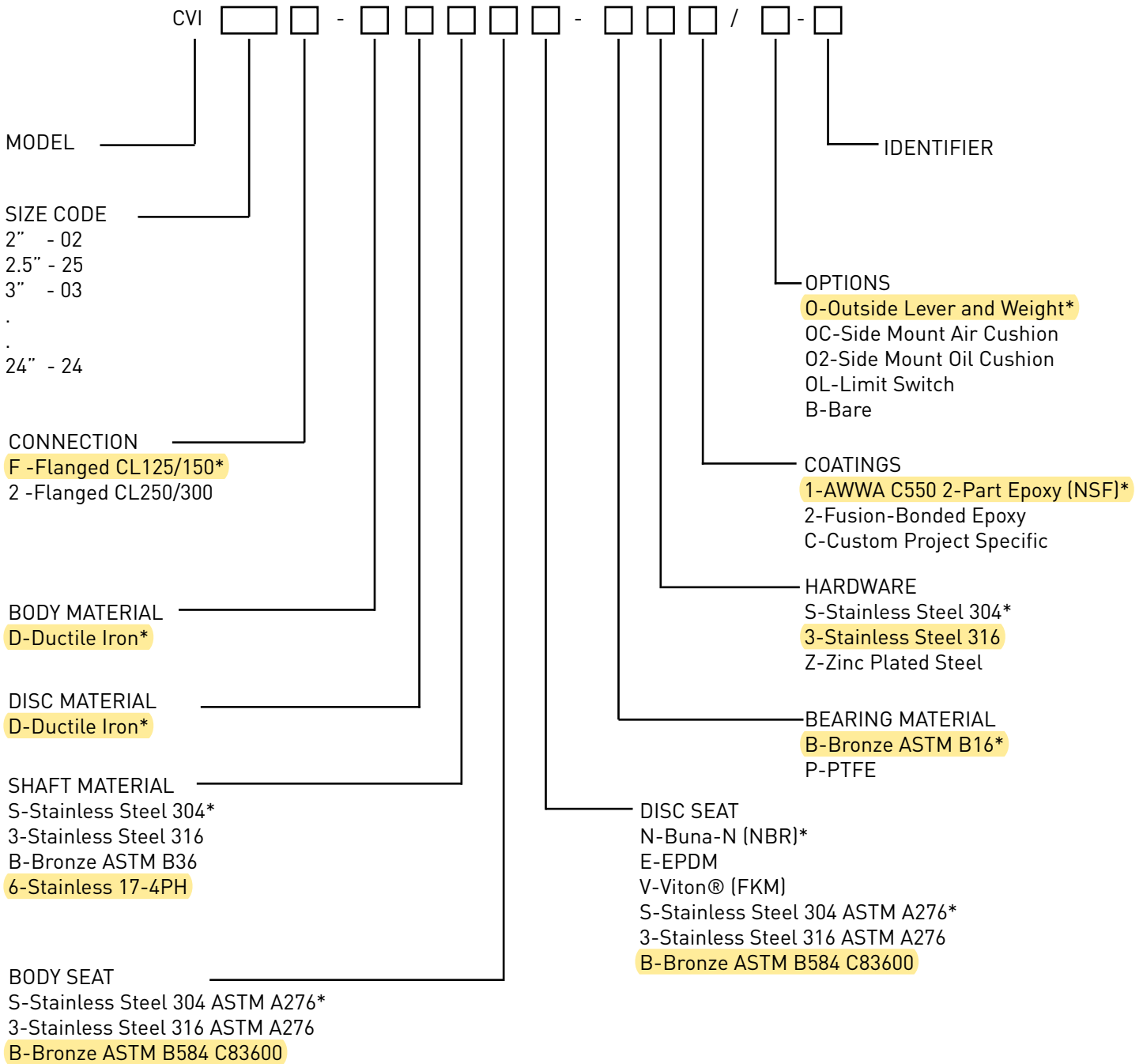
PAGE 13

ITEM NO.	PART DESCRIPTION	QTY	SIZE	C (Inches)
37	STEEL CUSHION BRACKET	1	6"	9.50
38	ALUMINUM PNEUMATIC CYLINDER	1	8"	11.75
39	STEEL CUSHION ARM	1	10"	14.25
42	BRASS FITTINGS AND CONTROL VALVE	1	12"	17.00
44	CVI VALVE ASSEMBLY	1		

NOTE: VSI offers two versions of the series CVI. All features are not applicable to all valves. Consult with VSI for more information.



REPLACEABLE SEAT PART NUMBER MATRIX



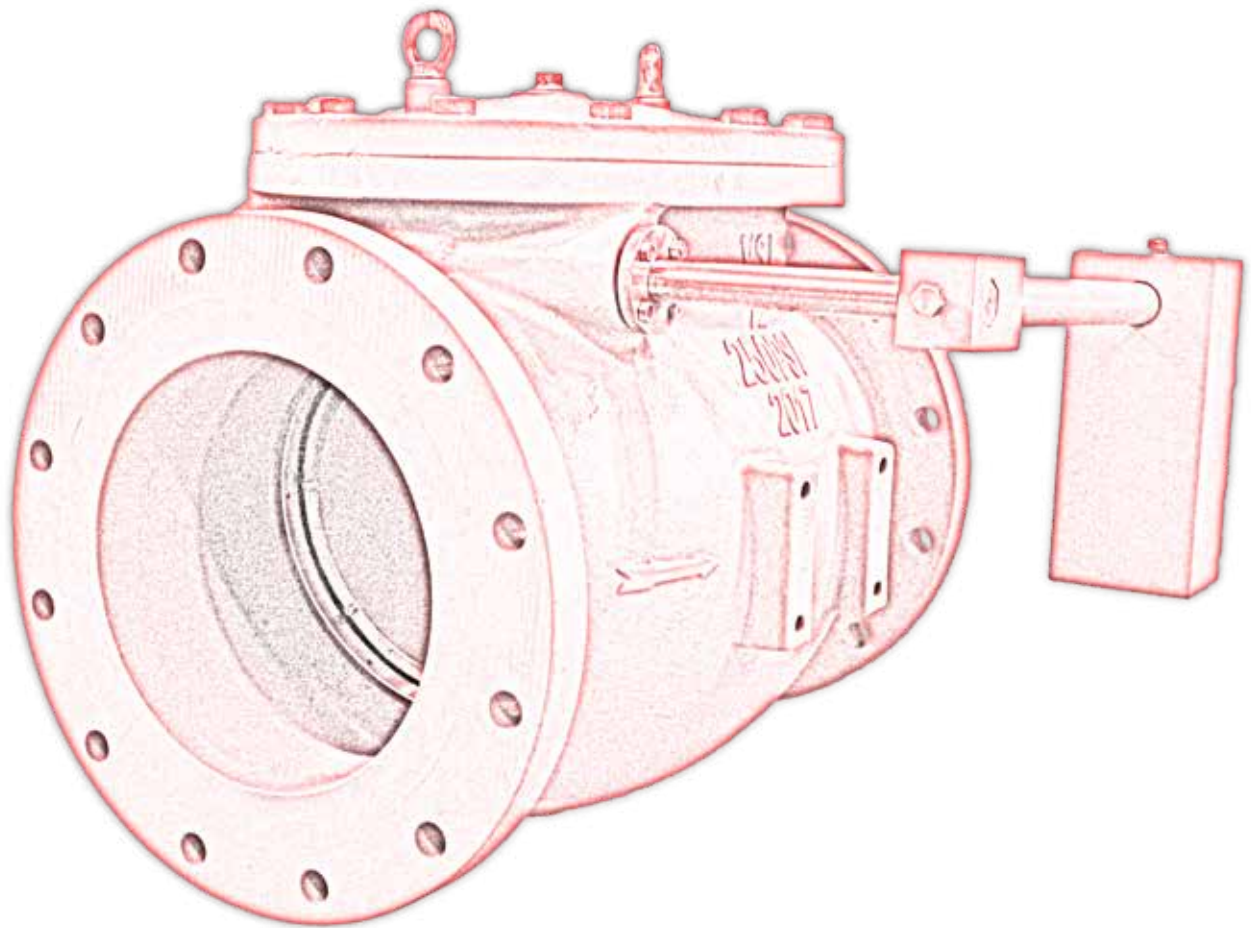
* Standard Material

Additional material options available as special order.

EXAMPLE:

CVI08F-DDSSN-PS1/0-Q

A 8" flanged Check valve with Ductile Iron body and disc, SS304 shaft, SS304 body seat, NBR disc seat and seals, bronze bearings, SS304 hardware, AWWA C550 2-part epoxy coatings with outside lever & weight.



VSI Waterworks LLC

tel: 1 (770) 740 0800

fax: 1 (770) 740 8777

email: sales@vsiwaterworks.com



www.VSIWaterworks.com

As part of a process of on-going product development, VSI reserves the right to amend or change specifications without prior notice. Published data may be subject to change. For the latest version, visit our website at www.vsiwaterworks.com