

DATE: 5/05/2021

BID NO.: 50-00134266

INVITATION TO BID
THIS IS NOT AN ORDER

Page: 1

JEFFERSON PARISH

CIMSCO, INC.
1840 L & A ROAD
METAIRIE, LA 70001

PURCHASING DEPARTMENT
P.O. BOX 9
GRETNA, LA. 70054-0009
504-364-2678

BUYER: DMEVANS@jeffparish.net

BIDS WILL BE RECEIVED ONLINE VIA WWW.JEFFPARISHBIDS.NET UNTIL 2:00 PM, 5/18/2021 AND PUBLICLY OPENED THEREAFTER IN THE WEST BANK PURCHASING DEPT, SUITE 4400, JEFFERSON PARISH GENERAL GOVERNMENT BUILDING, 200 DERBIGNY STREET, GRETNA, LA 70053. At no charge, bidders are to submit via Jefferson Parish's electronic procurement page by visiting www.jeffparishbids.net to register for this free site. Additional instructions are included in the text box highlighting electronic procurement.

LATE BIDS WILL NOT BE ACCEPTED

NOTE: ONLY BIDS WRITTEN IN INK OR TYPEWRITTEN, AND PROPERLY SIGNED BY A MEMBER OF THE FIRM OR AUTHORIZED REPRESENTATIVE, WILL BE ACCEPTED. PENCIL AND/OR PHOTOSTATIC FIGURES OR SIGNATURES SHALL RESULT IN BID REJECTION. HOWEVER, ELECTRONIC SIGNATURES AS DEFINED IN LSA - R.S. 9:2620(8) ARE ACCEPTABLE. SIGNATURE MUST BE A SECURED DIGITAL SIGNATURE.

INSTRUCTIONS FOR BIDDERS AND GENERAL CONDITIONS

THE FOLLOWING INSTRUCTIONS APPLY TO ALL BIDS

All bids submitted are subject to these instructions and general conditions and any special conditions and specifications contained herein, all of which are made part of this bid proposal reference. By submitting a bid, vendor agrees to comply with all provisions of Louisiana Law as well be in compliance with the Jefferson Parish Code of Ordinances, Louisiana Code of Ethics, applicable Jefferson Parish ethical standards and Jefferson Parish Resolution No. 113646 and/or Resolution No. 113647 as amended.

Jefferson Parish adheres to the Louisiana Code of Governmental Ethics, contained in Louisiana Revised Statutes Annotated, R.S. 42:1101, et seq. Vendor/Proposer by this submission, warrants that there are no "conflicts of interest" related to this procurement that would violate applicable Louisiana Law. Violation of the Louisiana Code of Governmental Ethics may result in rescission of contract, permit or licenses, and the imposition of fines and/or penalties, without contractual liability to the public in accordance with applicable law.

All vendors submitting bids should register as a Jefferson Parish vendor if not already yet registered. Registration forms may be downloaded from <http://purchasing.jeffparish.net> and by clicking on Vendor Information. Current W-9 forms with respective Tax Identification numbers and vendor applications may be submitted at any time; however, if your company is not registered and/or a current W-9 form is not on file, vendor registration is mandatory. Vendors may experience a delay in payment if your company is not a registered vendor with Jefferson Parish.

All quotations shall be based on F.O.B. Agency warehouse or job site, anywhere within the Parish as designated by the Purchasing Department. This provision does not apply to public works projects

JEFFERSON PARISH requires all products to be new (current) and all work must be performed according to standard practices for the project. Unless otherwise specified, no aftermarket parts will be accepted. Unless otherwise specified, all workmanship and materials must have at least one (1) year guaranty, in writing, from the date of delivery and/or acceptance of the project. Any deviations or alterations from the specifications must be indicated and/or supporting documentation supplied with bid submission.

Bidders should submit all questions in writing via email to the buyer's email address as indicated above, no later than Five (5) working days prior to the bid opening. Bid numbers should be mentioned in all requests. If submitting online, vendors may send questions via the E-Procurement site no later than Five (5) working days prior to the bid opening.

If this bid requires a pre-bid conference (see Additional Requirements section), bidders are advised that such conference will be held to allow bidders the opportunity to identify any discrepancies in the bid specifications and seek further clarification regarding instructions. The Purchasing Department will issue a written response to bidders' questions in the form of an Addendum. Please note that all official communication will be expressed in the form of an addendum.

Visit our website at [HTTP://PURCHASING.JEFFPARISH.NET](http://PURCHASING.JEFFPARISH.NET)

REVISED PER ADDENDUM 1

CIMSCO, INC.
1840 L & A ROAD
METAIRIE, LA 70001

DATE: 5/05/2021

BID NO.: 50-00134266

Page: 2

All formal Addenda require written acknowledgement on the bid form by the bidder. Failure to acknowledge an Addendum on the bid form shall cause the bid to be rejected. JEFFERSON PARISH reserves the right to award bid to next lowest responsive and responsible bidder in this event.

JEFFERSON PARISH will accept one price for each item unless otherwise indicated. Two or more prices for one item will result in bid rejection. Bidders are required to complete, sign and return the bid form and/or complete and return the associated line item pricing forms as indicated. Vendors must not alter the bid forms. Doing so will cause the bid to be rejected.

A corporate resolution or written evidence of the individual signing the bid having such authority must be submitted with the bid. Failure to comply will cause bid to be rejected. For corporate entities, such written evidence may be a printout of the Louisiana Secretary of State's website listing the signatory as an officer. Such printout shall be included with the bid submission. Bids submitted by Owners or Sole Proprietorships must include certification that he or she owns the entity for which the bid is signed. This documentation must be submitted with the bid. Failure to do so will result in bid rejection.

NOTE: A sample corporate resolution can be downloaded from our website <http://purchasing.jeffparish.net> or you may provide your own document. A sample certification of sole proprietorship can also be downloaded from our website <http://purchasing.jeffparish.net> or you may provide your own document.

INSTRUCTIONS FOR BIDDERS AND GENERAL CONDITIONS

A. AWARD OF CONTRACT: JEFFERSON PARISH reserves the right to award contracts or place orders on a lump sum or individual item basis, or such combination, as shall in its judgment be in the best interest of JEFFERSON PARISH. Every contract or order shall be awarded to the LOWEST RESPONSIVE and RESPONSIBLE BIDDER, taking into consideration the CONFORMITY WITH THE SPECIFICATIONS and the DELIVERY AND/OR COMPLETION DATE. SPLIT AWARDS MADE TO SEVERAL VENDORS WILL ONLY BE GRANTED TO THOSE DEEMED RESPONSIVE AND RESPONSIBLE.

All bid prices shall remain valid for 45 days. Jefferson Parish and the lowest responsive and responsible bidder(s) by mutual written consent may mutually agree to extend the deadline for award by one (1) or more extensions of thirty (30) calendar days.

PROTESTS: Only those vendors that submit bids in response to this solicitation may protest any element of the procurement, in writing to the Director of the Purchasing Department. Written protest must be received within 48 hours of the release of the bid tabulation by the Purchasing Department. After consultation, the Parish Attorney's Office will then respond to protests in writing. (For more information, please see Chapter 2, Article VII, Division 2, Sec. 2-914.1 of the Jefferson Parish Code of Ordinances.)

PREFERENCE: Unless federal funding is directly spent by Jefferson Parish for this purchase, preference is hereby given to materials, supplies, and provisions produced, manufactured or grown in Louisiana, quality being equal to articles offered by competitors outside the state. "LSA - R.S. 38:2251-2261"

B. USE OF BRAND NAMES AND STOCK NUMBERS: Where brand names and stock numbers are specified, it is for the purpose of establishing certain minimum standards of quality. Bids may be submitted for products of equal quality, provided brand names and stock numbers are specified. Complete product data may be required prior to award.

C. CANCELLATION OF CONTRACT: JEFFERSON PARISH reserves the right to cancel all or any part if not shipped promptly. No charges will be allowed for parking or cartage unless specified in quotation. The order must not be filled at a higher price than quoted. JEFFERSON PARISH reserves the right to cancel any contract at anytime and for any reason by issuing a THIRTY (30) day written notice to the contractor.

For good cause and as consideration for executing a contract with Jefferson Parish, vendor conveys, sells, assigns and transfers to Jefferson Parish or its assigns all rights, title and interest in and to all causes of action it may now or hereafter acquire under the antitrust laws of the United States and the State of Louisiana, relating to the particular good or services purchased or acquired by Jefferson Parish.

D. PRICES: Jefferson Parish is exempt from paying sales tax under LSA-R.S. 47:301 (8)(c). All prices for purchases by Jefferson Parish of supplies and materials shall be quoted in the unit of measure specified and unless otherwise specified, shall be exclusive of state and local taxes. The price quoted for work shall be stated in figures. In the event there is a difference in unit prices and totals, the unit price shall prevail.

Quantities listed are for bidding purposes only. Actual requirements may be more or less than quantities listed.

Bidders are not to exclude from participation in, deny the benefits of, or subject to discrimination under any program or activity, any person in the United States on the grounds of race, color, national origin, or sex; nor discriminate on the basis of age under the Age Discrimination Act of 1975, or with respect to an otherwise qualified handicapped individual as provided in Section 504 of the Rehabilitation Act of 1973, or on the basis of religion, except that any exemption from such prohibition against discrimination on the basis of religion as provided in the Civil Rights Act of 1964, or Title VI and VII of the Act of April 11, 1968, shall also apply. This assurance includes compliance with the administrative requirements of the Revenue Sharing final handicapped discrimination provisions contained in Section 51.55 (c), (d), (e), and (k)(5) of the Regulations. New construction or renovation projects must comply with Section 504 of the 1973 Rehabilitation Act, as amended, in accordance with the American National Standard Institute's specifications (ANSI A17.1-1961).

**CIMSCO, INC.
1840 L & A ROAD
METAIRIE, LA 70001**

DATE: 5/05/2021

BID NO.: 50-00134266

Page: 3

INSTRUCTIONS FOR BIDDERS AND GENERAL CONDITIONS

Jefferson Parish and its partners as the recipients of federal funds are fully committed to awarding a contract(s) to firm(s) that will provide high quality services and that are dedicated to diversity and to containing costs. Thus, Jefferson Parish strongly encourages the involvement of minority and/or woman-owned business enterprises (DBE's, including MBE's, WBE's and SBE's) to stimulate participation in procurement and assistance programs.

The purpose and intention of this invitation to bid is to afford all suppliers an equal opportunity to bid on all construction, maintenance, repair, operating supplies and/or equipment listed in this bid proposal. JEFFERSON PARISH WILL ACCEPT ONE BID ONLY FROM EACH VENDOR. Items bid must meet specifications.

Advertised bids will be tabulated and a copy of the tabulation will be forwarded to each responding bidder.

IN ACCORDANCE WITH STATE REGULATIONS JEFFERSON PARISH OFFERS ELECTRONIC PROCUREMENT TO ALL VENDORS

This electronic procurement system allows vendors the convenience of reviewing and submitting bids online.

This is a secure site and authorized personnel have limited read access only. Bidders are to submit electronically using this free service; while the website accepts various file types, one single PDF file containing all appropriate and required bid documents is preferred. Bidders submitting uploaded images of bid responses are solely responsible for clarity. If uploaded images/documents are not legible, then bidder's submission will be rejected. Please note all requirements contained in this bid package for electronic bid submission.

Please visit our E-Procurement Page at www.jeffparishbids.net to register and view Jefferson Parish solicitations. For more information, please visit the Purchasing Department page at <http://purchasing.jeffparish.net>.

The general specifications for construction projects and the purchase of materials, services and/or supplies are those adopted by the JEFFERSON PARISH Council by Resolution No. 113646 or 113647 as amended. The general conditions adopted by this resolution shall be considered as much a part of this document as if they were written wholly herein. A copy may be obtained from the Office of the Parish Clerk, Suite 6700, Jefferson Parish General Government Building, 200 Derbigny Street, Gretna, LA 70053. You may also obtain a copy by visiting the Purchasing Department webpage at <http://purchasing.jeffparish.net> and clicking on Online Forms.

ADDITIONAL REQUIREMENTS FOR THIS BID

PLEASE MATCH THE NUMBERS PRINTED IN THIS BOX WITH THE
CORRESPONDING INSTRUCTIONS BELOW.

12,13,15

1. All bidders must attend the MANDATORY pre-bid conference and will be required to sign in and out as evidence of attendance. In accordance with LSA R.S. 38:2212(I), all prospective bidders shall be present at the beginning of the MANDATORY pre-bid conference and shall remain in attendance for the duration of the conference. Any prospective bidder who fails to attend the conference or remain for the duration shall be prohibited from submitting a bid for the project.
2. Attendance to this pre-bid conference is optional. However, failure to attend the pre-bid conference shall not relieve the bidder of responsibility for information discussed at the conference. Furthermore, failure to attend the pre-bid conference and inspection does not relieve the successful bidder from the necessity of furnishing materials or performing any work that may be required to complete the work in accordance with the specification with no additional cost to the owner.
3. Contractor must hold current applicable JEFFERSON PARISH licenses with the Department of Inspection and Code Enforcement. Contractor shall obtain any and all permits required by the JEFFERSON PARISH Department of Inspection and Code Enforcement. The contractor shall be responsible for the payment of these permits. All permits must be obtained prior to the start of the project. Contractor must also hold any and all applicable Federal and State licenses. Contractor shall be responsible for the payment of these permits and shall obtain them prior to the start of the project.

CIMSCO, INC.
1840 L & A ROAD
METAIRIE, LA 70001

DATE: 5/05/2021

BID NO.: 50-00134266

Page: 4

INSTRUCTIONS FOR BIDDERS AND GENERAL CONDITIONS

4. A LA State Contractor's License will be required in accordance with LSA R.S. 37-2150 et. seq. and such license number will be shown on the outside of the bid electronic envelope. Failure to comply will cause the bid to be rejected. When submitting the bid electronically, the license number must be entered in the appropriate field in the electronic procurement system. Failure to comply will cause the bid to be rejected.
5. It is the bidder's responsibility to visit the job site and evaluate the job before submitting a bid.
6. Job site must be clean and free of all litter and debris daily and upon completion of the contract. Passageways must be kept clean and free of material, equipment, and debris at all times. Flammable material must be removed from the job site daily because storage will not be permitted on the premises. Precaution must be exercised at all times to safeguard the welfare of JEFFERSON PARISH and the general public.
7. PUBLIC WORKS BIDS: All awards for public works in excess of \$5,000.00 will be reduced to a formal contract which shall be recorded at the contractor's expense with the Clerk of Court and Ex-Officio Recorder of Mortgages for the Parish of Jefferson. A price list of recordation costs may be obtained from the Clerk of Court and Ex-Officio Recorder of Mortgages for the Parish of Jefferson. All awards in excess of \$25,000.00 will require both a performance and a payment bond. Unless otherwise stated in the bid specifications, the performance bond requirements shall be 100% of the contract price. Unless otherwise state in the bid specifications, the payment bond requirements shall be 100% of the contract price. Both bonds shall be supplied at the signing of the contract.
8. NON-PUBLIC WORKS BIDS: A performance bond will be required for this bid. The amount of the bond will be 100% of the contract price unless otherwise indicated in the specifications. The performance bond shall be supplied at the signing of the contract.
9. NON-PUBLIC WORKS BIDS: A payment bond will be required for this bid. The amount of the bond will be 100% of the contract price unless otherwise indicated in the specifications. The payment bond shall be supplied at the signing of the contract.
10. All bidders must comply with the requirements stated in the attached "Standard Insurance Requirements" sheet attached to this bid solicitation. Failure to comply with this instruction will result in bid rejection.
11. A bid bond will be required with bid submission in the amount of 5% of the total bid, unless otherwise stated in the bid specifications. All sureties must be in original format (no copies) When submitting a bid online, vendors must submit an electronic bid bond through the respective online clearinghouse bond management system(s) as indicated in the electronic bid solicitation on Central Auction House. No scanned paper copies of any bid bond will be accepted as part of the electronic bid submission.
12. This is a requirements contract to be provided on an as needed basis. JEFFERSON PARISH makes no representations on warranties with regard to minimum guaranteed quantities unless otherwise stated in the bid specifications.
13. Freight charges should be included in total cost when quoting. If not quoted FOB DELIVERED, freight must be quoted as a separate item. Bid may be rejected if not quoted FOB DELIVERED or if freight charges are not indicated on bid form.
14. PUBLIC WORKS BIDS - Completed, Signed and Properly Notarized Affidavits Required; This applies to all solicitations for construction, alteration or demolition of public buildings or projects, in conformity with the provisions contained in LSA-RS 38:2212.9, LSA-RS 38:2212.10, LSA-RS 38:2224, and Sec 2-923.1 of the Jefferson Parish Code of Ordinances. For bidding purposes, all bidders must submit with bid submission COMPLETED, SIGNED and PROPERLY NOTARIZED Affidavits, including: Non-Conviction Affidavit, Non-Collusion Affidavit, Campaign Contribution Affidavit, Debt Disclosures Affidavit and E-Verify Affidavit. For the convenience of vendors, all affidavits have been combined into one form entitled PUBLIC WORKS BID AFFIDAVIT. This affidavit must be submitted in its original format, and without material alteration, in order to be compliant and for the bid to be considered responsive. A scanned copy of the completed, signed and properly notarized affidavit may be submitted with the bid, however, the successful bidder must submit the original affidavit in its original format and without material alteration upon contract execution. Failure to comply will result in the bid submission being rejected as non-responsive. The Parish reserves the right to award bid to the next lowest responsive and responsible bidder in this event.

DATE: 5/05/2021

BID NO.: 50-00134266

Page: 5

INSTRUCTIONS FOR BIDDERS AND GENERAL CONDITIONS

15. NON PUBLIC WORK BIDS - Completed, Signed and Properly Notarized Affidavits Required in conformity with the provisions contained in LSA – RS 38:2224 and Sec 2-923.1 of the Jefferson Parish Code of Ordinances. For bidding purposes, all bidders must submit with bid submission COMPLETED, SIGNED and PROPERLY NOTARIZED Affidavits, including: Non-Collusion Affidavit, Debt Disclosures Affidavit and Campaign Contribution Affidavit. For the convenience of vendors, all affidavits have been combined into one form entitled NON PUBLIC WORKS BID AFFIDAVIT. This affidavit must be submitted in its original format, and without material alteration, in order to be compliant and for the bid to be considered responsive. A scanned copy of the completed, signed and properly notarized affidavit may be submitted with the bid, however, the successful bidder must submit the original affidavit in its original format and without material alteration upon contract execution. Failure to comply will result in the bid submission being rejected as non-responsive. The Parish reserves the right to award bid to the next lowest responsive and responsible bidder in this event.

16. The ensuing contract for this bid solicitation may be eligible for FEMA reimbursement and/or Federal funding/reimbursement. As such, the referenced appendix will be applicable accordingly and shall be considered a part of the bid documents. All applicable certifications must be duly completed, signed and submitted with bid submission. Failure to submit applicable certifications with bid submission will result in bid rejection.

17. For this project, the Contractor shall not pay any state or local sales or use taxes on materials and equipment which are affixed and made part of the immovable property of the project or which is permanently incorporated in the project (hereinafter referred to as "applicable materials and equipment"). All purchases of applicable materials or equipment shall be made by the contractor on behalf of and as the agent of Jefferson Parish (Owner), a political subdivision of the State of Louisiana. No state and local sales and use taxes are owed on applicable materials and equipment under the provisions of Act 1029 of the 1991 Regular Session - Louisiana Revised Statute 47:301(8)(c). Owner will furnish to contractor a certificate form which certifies that Owner is not required to pay such state or local sales and use taxes, and contractor shall furnish a copy of such certificate to all vendors or suppliers of the applicable materials and equipment, and report to Owner the amount of taxes not incurred.

It shall be the duty of every parish officer, employee, department, agency, special district, board, and commission: and the duty of every contractor, subcontractor, and licensee of the parish, and the duty of every applicant for certification of eligibility for a parish contract or program, to cooperate with the Inspector General in any investigation, audit, inspection, performance review, or hearing pursuant to JPCO 2-155.10(19). By signing this document, every corporation, partnership, or person contracting with PARISH, whether by cooperative endeavor, intergovernmental agreement, bid, proposal, application or solicitation for a parish contract, and every application for certification of eligibility for a parish contract or program, attests that it understands and will abide by all provisions of JPCO 2-155.10.

DATE: 5/05/2021
BID NO.: 50-00134266

CIMSCO, INC.
1840 L & A ROAD
METAIRIE, LA 70001

Page: 6

BID FORM
Non Public Works

All Public Work Projects are required to use the Louisiana Uniform Public Work Bid Form

All prices must be held firm unless an escalation provision is requested in this bid. Jefferson Parish will allow one escalation during the term of the contract, which may not exceed the U.S. Bureau of Labor Statistics National Index for all Urban Consumers, unadjusted 12 month figure. The most recently published figure issued at the time an adjustment is requested will be used. A request must be made in writing by the vendor, and the escalation will only be applied to purchases made after the request is made.

Are you requesting an escalation provision?

YES _____ NO X

MAXIMUM ESCALATION PERCENTAGE REQUESTED N/A %

INITIAL BID PRICES WILL REMAIN FIRM THROUGH THE DATE OF 5-18-2022

For the purposes of comparison of bids when an escalation provision is requested, Jefferson Parish will apply the maximum escalation percentage quoted by the bidder to the period to which it is applied in the bid. The initial price and the escalation will be used to calculate the total bid price. It will be assumed, for comparison of prices only, that an equal amount of material or labor is purchased each month throughout the entire contract.

DELIVERY: FOB JEFFERSON PARISH

INDICATE DELIVERY DATE ON EQUIPMENT AND SUPPLIES

stock to 4 weeks

LOUISIANA CONTRACTOR'S LICENSE NO.: (if applicable) _____

THIS SECTION MUST BE COMPLETED BY BIDDER:

FIRM NAME: CIMSCO INC
ADDRESS: 1840 L & A ROAD
CITY, STATE: METAIRIE, LA ZIP: 70001
TELEPHONE: 504 835-7319 FAX: 504 832-0820
EMAIL ADDRESS: Tim@cimscotnc.com

In the event that addenda are issued with this bid, bidders MUST acknowledge all addenda on the bid form. Bidder must acknowledge receipt of an addendum on the bid form by placing the addendum number as indicated. Failure to acknowledge any addendum on the bid form will result in bid rejection.

Acknowledge Receipt of Addenda: NUMBER: Addendum #1

NUMBER: _____

NUMBER: _____

NUMBER: _____

TOTAL PRICE OF ALL BID ITEMS: \$ 154,261.35

AUTHORIZED SIGNATURE: Timothy Randall

TITLE: TIMOTHY RANDALL

Sales

Printed Name

SIGNING INDICATES YOU HAVE READ AND COMPLY WITH THE INSTRUCTIONS AND CONDITIONS.

NOTE: All bids should be returned with the BID NUMBER and BID OPENING DATE indicated on the outside of the envelope submitted to the Purchasing Department.

CIMSCO, INC.
1840 L & A ROAD
METAIRIE, LA 70001

DATE: 5/05/2021

Page 7

INVITATION TO BID FROM JEFFERSON PARISH - continued

BID NO.: 50-00134266

SEALED BID

ITEM NUMBER	QUANTITY	U/M	DESCRIPTION OF ARTICLES	UNIT PRICE QUOTED	TOTALS
1	1.00	EA	<p>ONE YEAR CONTRACT FOR A SUPPLY OF DUCTILE IRON FITTINGS AND ADAPTER KITS FOR THE JEFFERSON PARISH DEPARTMENT OF PUBLIC WORKS- WATER AND ALL JEFFERSON PARISH AGENCIES AND MUNICIPALITIES</p> <p>0010 MECHANICAL JOINT SOLID REPAIR SLEEVES 3 INCH (LONG BODY)</p> <p>GROUP 1</p> <p>ONE (1) YEAR CONTRACT FOR A SUPPLY OF DUCTILE IRON FITTINGS AND ADAPTER KITS FOR THE JEFFERSON PARISH DEPARTMENT OF PUBLIC WORKS - WATER AND ALL JEFFERSON PARISH AGENCIES AND MUNICIPALITIES</p>	36.00	36.00
2	1.00	EA	<p>0030 MECHANICAL JOINT SOLID REPAIR SLEEVES 4 INCH (LONG BODY) (10001A)</p> <p>GROUP 1</p>	38.00	38.00
3	1.00	EA	<p>0040 MECHANICAL JOINT SOLID REPAIR SLEEVES 4 INCH (COMPACT BODY) (10001)</p> <p>GROUP 1</p>	27.00	27.00
4	1.00	EA	<p>0050 MECHANICAL JOINT SOLID REPAIR SLEEVES 6 INCH (LONG BODY)</p> <p>GROUP 1</p>	88.00	88.00
5	1.00	EA	<p>0060 MECHANICAL JOINT SOLID REPAIR SLEEVES 6 INCH (COMPACT BODY) (10002)</p> <p>GROUP 1</p>	47.00	47.00
6	1.00	EA	<p>0070 MECHANICAL JOINT SOLID REPAIR SLEEVES 8 INCH (LONG BODY)</p> <p>GROUP 1</p>	198.70	198.70
7	1.00	EA	<p>0080 MECHANICAL JOINT SOLID REPAIR SLEEVES 8 INCH (COMPACT BODY) (10003)</p> <p>GROUP 1</p>	61.00	61.00
8	1.00	EA	<p>0090 MECHANICAL JOINT SOLID REPAIR SLEEVES 10 INCH (LONG BODY) (10004A)</p>	119.00	119.00

CIMSCO, INC.
1840 L & A ROAD
METAIRIE, LA 70001

DATE: 5/05/2021

Page 8

INVITATION TO BID FROM JEFFERSON PARISH - continued

BID NO.: 50-00134266

SEALED BID

ITEM NUMBER	QUANTITY	U/M	DESCRIPTION OF ARTICLES	UNIT PRICE QUOTED	TOTALS
			GROUP 1		
9	1.00	EA	0100 MECHANICAL JOINT SOLID REPAIR SLEEVES 10 INCH (COMPACT BODY) (10004)	105.00	105.00
			GROUP 1		
10	1.00	EA	0110 MECHANICAL JOINT SOLID REPAIR SLEEVES 12 INCH (LONG BODY) (10005A)	156.00	156.00
			GROUP 1		
11	1.00	EA	0120 MECHANICAL JOINT SOLID REPAIR SLEEVES 12 INCH (COMPACT BODY) (10005)	119.00	119.00
			GROUP 1		
12	.00		0120 MECHANICAL JOINT SOLID REPAIR SLEEVES 12 INCH (COMPACT BODY) (10005)	119.00	119.00
			GROUP 1		
13	1.00	EA	0130 MECHANICAL JOINT SOLID REPAIR SLEEVES 14 INCH (LONG BODY)	251.00	251.00
			GROUP 1		
14	1.00	EA	0140 MECHANICAL JOINT SOLID REPAIR SLEEVES 14 INCH (COMPACT BODY) (10006)	205.00	205.00
			GROUP 1		
15	1.00	EA	0145 MECHANICAL JOINT SOLID REPAIR SLEEVES 16 INCH (LONG BODY) (10007A)	305.00	305.00
			GROUP 1		
16	1.00	EA	0150 MECHANICAL JOINT SOLID REPAIR SLEEVES 16 INCH (COMPACT BODY) (10007)	275.00	275.00

CIMSCO, INC.
1840 L & A ROAD
METAIRIE, LA 70001

DATE: 5/05/2021

Page 9

INVITATION TO BID FROM JEFFERSON PARISH - continued

BID NO.: 50-00134266

SEALED BID

ITEM NUMBER	QUANTITY	U/M	DESCRIPTION OF ARTICLES	UNIT PRICE QUOTED	TOTALS
			GROUP 1		
17	1.00	EA	0160 MECHANICAL JOINT SOLID REPAIR SLEEVES 18 INCH (LONG BODY) (10008A)	399.00	399.00
			GROUP 1		
18	1.00	EA	0170 MECHANICAL JOINT SOLID REPAIR SLEEVES 18 INCH (COMPACT BODY) (10008)	348.00	348.00
			GROUP 1		
19	1.00	EA	0180 MECHANICAL JOINT SOLID REPAIR SLEEVES 20 INCH (LONG BODY) (10009A)	791.00	791.00
			GROUP 1		
20	1.00	EA	0190 MECHANICAL JOINT SOLID REPAIR SLEEVES 20 INCH (COMPACT BODY) (10009)	598.00	598.00
			GROUP 1		
21	1.00	EA	0195 MECHANICAL JOINT SOLID REPAIR SLEEVES 24 INCH (LONG BODY) (10010A)	641.00	641.00
			GROUP 1		
22	1.00	EA	0200 MECHANICAL JOINT SOLID REPAIR SLEEVES 24 INCH (COMPACT BODY) (10010)	560.00	560.00
			GROUP 1		
23	1.00	EA	0210 MECHANICAL JOINT SOLID REPAIR SLEEVES 30 INCH (LONG BODY) (10011A)	1290.00	1290.00
			GROUP 1		
24	1.00	EA	0220 MECHANICAL JOINT SOLID REPAIR SLEEVES 30 INCH (COMPACT BODY) (10011)	1150.00	1150.00
			GROUP 1		
25	1.00	EA	0230 MECHANICAL JOINT SOLID REPAIR SLEEVES 36 INCH (LONG BODY) C-110	2920.00	2920.00

CIMSCO, INC.
1840 L & A ROAD
METAIRIE, LA 70001

DATE: 5/05/2021

Page 10

INVITATION TO BID FROM JEFFERSON PARISH - continued

BID NO.: 50-00134266

SEALED BID

ITEM NUMBER	QUANTITY	U/M	DESCRIPTION OF ARTICLES	UNIT PRICE QUOTED	TOTALS
			(10012A) GROUP 1		
26	1.00	EA	0240 MECHANICAL JOINT SOLID REPAIR SLEEVES 36 INCH (COMPACT BODY) C-110	2422.00	2422.00
			(10012) GROUP 1		
27	1.00	EA	0250 MECHANICAL JOINT SOLID REPAIR SLEEVES 42 INCH (LONG BODY) C-110	2900.00	2900.00
			GROUP 1		
28	1.00	EA	0260 MECHANICAL JOINT SOLID REPAIR SLEEVES 42 INCH (COMPACT BODY) C-110	4589.00	4589.00
			(10013) GROUP 1		
29	1.00	EA	0270 MECHANICAL JOINT SOLID REPAIR SLEEVES 48 INCH (LONG BODY) C-110	3900.00	3900.00
			(10014A) GROUP 1		
30	1.00	EA	0280 MECHANICAL JOINT SOLID REPAIR SLEEVES 48 INCH (COMPACT BODY) C-110	4300.00	4300.00
			(10014) GROUP 1		
31	1.00	EA	0290 MECHANICAL JOINT, 90 DEGREE BENDS 3 INCH (06475)	38.25	38.25
			GROUP 2		
32	1.00	EA	0295 MECHANICAL JOINT, 90 DEGREE BENDS 4 INCH (06476)	4300	4300
			GROUP 2		
33	1.00	EA	0300 MECHANICAL JOINT, 90 DEGREE BENDS 6 INCH (06477)	8400	8400

CIMSCO, INC.
1840 L & A ROAD
METAIRIE, LA 70001

DATE: 5/05/2021

INVITATION TO BID FROM JEFFERSON PARISH - continued

Page 11

BID NO.: 50-00134266

SEALED BID

ITEM NUMBER	QUANTITY	U/M	DESCRIPTION OF ARTICLES	UNIT PRICE QUOTED	TOTALS
			GROUP 2		
34	1.00	EA	0310 MECHANICAL JOINT, 90 DEGREE BENDS 8 INCH (06478)	115.00	115.00
			GROUP 2		
35	1.00	EA	0320 MECHANICAL JOINT, 90 DEGREE BENDS 10 INCH (06479)	219.00	219.00
			GROUP 2		
36	1.00	EA	0330 MECHANICAL JOINT, 90 DEGREE BENDS 12 INCH (06480)	225.00	225.00
			GROUP 2		
37	1.00	EA	0340 MECHANICAL JOINT, 90 DEGREE BENDS 14 INCH (06481)	296.00	296.00
			GROUP 2		
38	1.00	EA	0360 MECHANICAL JOINT, 90 DEGREE BENDS 18 INCH (06483)	471.00	471.00
			GROUP 2		
39	1.00	EA	0390 MECHANICAL JOINT, 90 DEGREE BENDS 30 INCH C-110	3100.00	3100.00
			GROUP 2		
40	1.00	EA	0400 MECHANICAL JOINT, 90 DEGREE BENDS 36 INCH C-110	4200.00	4200.00
			GROUP 2		
41	1.00	EA	0410 MECHANICAL JOINT X FLANGE, 90 DEGREE BENDS, 3 INCH	41.50	41.50
			GROUP 3		
42	1.00	EA	0420 MECHANICAL JOINT X FLANGE, 90 DEGREE BENDS, 4 INCH	52.00	52.00

CIMSCO, INC.
1840 L & A ROAD
METAIRIE, LA 70001

DATE: 5/05/2021

Page 12

INVITATION TO BID FROM JEFFERSON PARISH - continued

BID NO.: 50-00134266

SEALED BID

ITEM NUMBER	QUANTITY	U/M	DESCRIPTION OF ARTICLES	UNIT PRICE QUOTED	TOTALS
			GROUP 3		
43	1.00	EA	0430 MECHANICAL JOINT X FLANGE, 90 DEGREE BENDS, 6 INCH (06277)	88.00	88.00
			GROUP 3		
44	1.00	EA	0450 MECHANICAL JOINT X FLANGE, 90 DEGREE BENDS, 30 INCH C-110	4100.00	4100.00
			GROUP 3		
45	1.00	EA	0460 MECHANICAL JOINT X FLANGE, 90 DEGREE BENDS, 36 INCH C-110	5500.00	5500.00
			GROUP 3		
46	1.00	EA	0470 MECHANICAL JOINT, 45 DEGREE BENDS 3 INCH (06450)	34.00	34.00
			GROUP 4		
47	1.00	EA	0480 MECHANICAL JOINT, 45 DEGREE BENDS 4 INCH (06451)	57.00	57.00
			GROUP 4		
48	1.00	EA	0490 MECHANICAL JOINT, 45 DEGREE BENDS 6 INCH (06452)	64.00	64.00
			GROUP 4		
49	1.00	EA	0500 MECHANICAL JOINT, 45 DEGREE BENDS 8 INCH (06453)	98.00	98.00
			GROUP 4		
50	1.00	EA	0520 MECHANICAL JOINT, 45 DEGREE BENDS 12 INCH (06455)	175.00	175.00
			GROUP 4		
51	1.00	EA	0540 MECHANICAL JOINT, 45 DEGREE BENDS	375.00	375.00

CIMSCO, INC.
1840 L & A ROAD
METAIRIE, LA 70001

DATE: 5/05/2021

Page 13

INVITATION TO BID FROM JEFFERSON PARISH - continued

BID NO.: 50-00134266

SEALED BID

ITEM NUMBER	QUANTITY	U/M	DESCRIPTION OF ARTICLES	UNIT PRICE QUOTED	TOTALS
52	1.00	EA	16 INCH (06457)		
			GROUP 4		
53	1.00	EA	0570 MECHANICAL JOINT, 45 DEGREE BENDS 24 INCH (06460)	798.00	798.00
			GROUP 4		
54	1.00	EA	0580 MECHANICAL JOINT, 45 DEGREE BENDS 30 INCH C-110	1800.00	1800.00
			GROUP 4		
55	1.00	EA	0600 MECHANICAL JOINT X FLANGE, 45 DEGREE BENDS, 3 INCH	48.50	48.50
			GROUP 5		
56	1.00	EA	0620 MECHANICAL JOINT X FLANGE, 45 DEGREE BENDS, 6 INCH (06252)	92.00	92.00
			GROUP 5		
57	1.00	EA	0630 MECHANICAL JOINT X FLANGE, 45 DEGREE BENDS, 8 INCH (06253)	139.00	139.00
			GROUP 5		
58	1.00	EA	0640 MECHANICAL JOINT, 22-1/2 DEGREE BENDS, 3 INCH	21.50	21.50
			GROUP 6		
59	1.00	EA	0650 MECHANICAL JOINT, 22-1/2 DEGREE BENDS, 4 INCH (06426)	34.00	34.00
			GROUP 6		
60	1.00	EA	0660 MECHANICAL JOINT, 22-1/2 DEGREE BENDS, 6 INCH (06427)	51.00	51.00
			GROUP 6		
			0670 MECHANICAL JOINT, 22-1/2 DEGREE BENDS, 8 INCH (06428)	79.00	79.00

REVISED PER ADDENDUM 1

CIMSCO, INC.
1840 L & A ROAD
METAIRIE, LA 70001

DATE: 5/05/2021

Page 14

INVITATION TO BID FROM JEFFERSON PARISH - continued

BID NO.: 50-00134266

SEALED BID

ITEM NUMBER	QUANTITY	U/M	DESCRIPTION OF ARTICLES	UNIT PRICE QUOTED	TOTALS
			GROUP 6		
61	1.00	EA	0720 MECHANICAL JOINT, 22-1/2 DEGREE BENDS, 18 INCH (06433)	305.00	305.00
			GROUP 6		
62	1.00	EA	0730 MECHANICAL JOINT, 22-1/2 DEGREE BENDS, 20 INCH (06434)	441.80	441.80
			GROUP 6		
63	1.00	EA	0750 MECHANICAL JOINT, 11-1/4 DEGREE BENDS, 6 INCH (06502)	51.75	51.75
			GROUP 7		
64	1.00	EA	0760 MECHANICAL JOINT, 11-1/4 DEGREE BENDS, 8 INCH (06503)	72.00	72.00
			GROUP 7		
65	1.00	EA	0770 MECHANICAL JOINT, 11-1/4 DEGREE BENDS, 12 INCH (06505)	144.00	144.00
			GROUP 7		
66	1.00	EA	0780 MECHANICAL JOINT, 11-1/4 DEGREE BENDS, 20 INCH (06509)	405.00	405.00
			GROUP 7		
67	1.00	EA	0790 MECHANICAL JOINT TEES, 3 INCH BY 3 INCH	51.00	51.00
			GROUP 8		
68	1.00	EA	0800 MECHANICAL JOINT TEES, 4 INCH BY 4 INCH (10402)	57.00	57.00
			GROUP 8		
69	1.00	EA	0810 MECHANICAL JOINT TEES, 6 INCH BY 4 INCH (10403)	92.00	92.00

CIMSCO, INC.
1840 L & A ROAD
METAIRIE, LA 70001

DATE: 5/05/2021

INVITATION TO BID FROM JEFFERSON PARISH - continued

Page 15

BID NO.: 50-00134266

SEALED BID

ITEM NUMBER	QUANTITY	U/M	DESCRIPTION OF ARTICLES	UNIT PRICE QUOTED	TOTALS
70	1.00	EA	GROUP 8 0820 MECHANICAL JOINT TEES, 6 INCH BY 6 INCH (10404)	98.00	98.00
71	1.00	EA	GROUP 8 0830 MECHANICAL JOINT TEES, 8 INCH BY 6 INCH (10406)	320.00	320.00
72	1.00	EA	GROUP 8 0840 MECHANICAL JOINT TEES, 8 INCH BY 8 INCH (10407)	244.90	244.90
73	1.00	EA	GROUP 8 0850 MECHANICAL JOINT TEES, 10 INCH BY 6 INCH (10408)	175.00	175.00
74	1.00	EA	GROUP 8 0860 MECHANICAL JOINT TEES, 10 INCH BY 8 INCH (10409)	210.00	210.00
75	1.00	EA	GROUP 8 0870 MECHANICAL JOINT TEES, 10 INCH BY 10 INCH (10410)	207.00	207.00
76	1.00	EA	GROUP 8 0880 MECHANICAL JOINT TEES, 12 INCH BY 6 INCH (10411)	198.00	198.00
77	1.00	EA	GROUP 8 0890 MECHANICAL JOINT TEES, 12 INCH BY 8 INCH (10412)	225.00	225.00
78	1.00	EA	GROUP 8 0900 MECHANICAL JOINT TEES, 12 INCH BY 12 INCH (10414)	298.00	298.00

CIMSCO, INC.
1840 L & A ROAD
METAIRIE, LA 70001

DATE: 5/05/2021

Page 16

INVITATION TO BID FROM JEFFERSON PARISH - continued

BID NO.: 50-00134266

SEALED BID

ITEM NUMBER	QUANTITY	U/M	DESCRIPTION OF ARTICLES	UNIT PRICE QUOTED	TOTALS
			GROUP 8		
79	1.00	EA	0910 MECHANICAL JOINT TEES, 16 INCH BY 6 INCH	402.00	402.00
			GROUP 8		
80	1.00	EA	0920 MECHANICAL JOINT TEES, 16 INCH BY 8 INCH (10421)	343.00	343.00
			GROUP 8		
81	1.00	EA	0970 MECHANICAL JOINT X FLANGE TEES, 6 INCH BY 4 INCH	110.00	110.00
			GROUP 9		
82	1.00	EA	0980 MECHANICAL JOINT X FLANGE TEES, 6 INCH BY 6 INCH (10504)	215.80	215.80
			GROUP 9		
83	1.00	EA	0990 MECHANICAL JOINT X FLANGE TEES, 8 INCH BY 6 INCH (10506)	233.80	233.80
			GROUP 9		
84	1.00	EA	1000 MECHANICAL JOINT X FLANGE TEES, 10 INCH BY 6 INCH	234.00	234.00
			GROUP 9		
85	1.00	EA	1020 MECHANICAL JOINT X FLANGE TEES, 12 INCH BY 6 INCH (10511)	258.00	258.00
			GROUP 9		
86	1.00	EA	1025 MECHANICAL JOINT X FLANGE TEES, 14 INCH BY 6 INCH	299.00	299.00
			GROUP 9		
87	1.00	EA	1040 MECHANICAL JOINT X SWIVEL TEES, 6 INCH BY 6 INCH (10700)	151.30	151.30

CIMSCO, INC.
1840 L & A ROAD
METAIRIE, LA 70001

DATE: 5/05/2021

INVITATION TO BID FROM JEFFERSON PARISH - continued

Page 17

BID NO.: 50-00134266

SEALED BID

ITEM NUMBER	QUANTITY	U/M	DESCRIPTION OF ARTICLES	UNIT PRICE QUOTED	TOTALS
			GROUP 10		
88	1.00	EA	1050 MECHANICAL JOINT X SWIVEL TEES, 8 INCH BY 6 INCH (10701)	239.50	239.50
			GROUP 10		
89	1.00	EA	1060 MECHANICAL JOINT X SWIVEL TEES, 8 INCH BY 8 INCH (10702)	205.00	205.00
			GROUP 10		
90	1.00	EA	1070 MECHANICAL JOINT X SWIVEL TEES, 10 INCH BY 6 INCH (10703)	175.00	175.00
			GROUP 10		
91	1.00	EA	1080 MECHANICAL JOINT X SWIVEL TEES, 12 INCH BY 6 INCH (10705)	238.00	238.00
			GROUP 10		
92	1.00	EA	1090 MECHANICAL JOINT X SWIVEL TEES, 12 INCH BY 8 INCH (10706)	178.00	178.00
			GROUP 10		
93	1.00	EA	1110 MECHANICAL JOINT X SWIVEL TEES, 16 INCH BY 6 INCH (10709)	188.00	188.00
			GROUP 10		
94	1.00	EA	1130 MECHANICAL JOINT CROSSES, 4 INCH BY 4 INCH	112.00	112.00
			GROUP 11		
95	1.00	EA	1140 MECHANICAL JOINT CROSSES, 4 INCH BY 6 INCH	122.00	122.00
			GROUP 11		
96	1.00	EA	1150 MECHANICAL JOINT CROSSES, 6 INCH BY 6 INCH	143.00	143.00

CIMSCO, INC.
1840 L & A ROAD
METAIRIE, LA 70001

DATE: 5/05/2021

INVITATION TO BID FROM JEFFERSON PARISH - continued

Page 18

BID NO.: 50-00134266

SEALED BID

ITEM NUMBER	QUANTITY	U/M	DESCRIPTION OF ARTICLES	UNIT PRICE QUOTED	TOTALS
			GROUP 11		
97	1.00	EA	1160 MECHANICAL JOINT CONCENTRIC REDUCERS, 4 INCH BY 3 INCH (09401)	36.00	36.00
			GROUP 12		
98	1.00	EA	1170 MECHANICAL JOINT CONCENTRIC REDUCERS, 6 INCH BY 4 INCH (09402)	41.00	41.00
			GROUP 12		
99	1.00	EA	1180 MECHANICAL JOINT CONCENTRIC REDUCERS, 8 INCH BY 4 INCH (09403)	55.00	55.00
			GROUP 12		
100	1.00	EA	1190 MECHANICAL JOINT CONCENTRIC REDUCERS, 8 INCH BY 6 INCH (09404)	62.00	62.00
			GROUP 12		
101	1.00	EA	1210 MECHANICAL JOINT CONCENTRIC REDUCERS, 10 INCH BY 8 INCH (09406)	83.00	83.00
			GROUP 12		
102	1.00	EA	1220 MECHANICAL JOINT CONCENTRIC REDUCERS, 12 INCH BY 6 INCH (09407)	105.00	105.00
			GROUP 12		
103	1.00	EA	1230 MECHANICAL JOINT CONCENTRIC REDUCERS, 12 INCH BY 8 INCH (09408)	102.00	102.00
			GROUP 12		
104	1.00	EA	1240 MECHANICAL JOINT CONCENTRIC REDUCERS, 12 INCH BY 10 INCH (09409)	108.00	108.00
			GROUP 12		
105	1.00	EA	1250 MECHANICAL JOINT CONCENTRIC REDUCERS, 14 INCH BY 6 INCH (09410)	117.00	117.00

CIMSCO, INC.
1840 L & A ROAD
METAIRIE, LA 70001

DATE: 5/05/2021

Page 19

INVITATION TO BID FROM JEFFERSON PARISH - continued

BID NO.: 50-00134266

SEALED BID

ITEM NUMBER	QUANTITY	U/M	DESCRIPTION OF ARTICLES	UNIT PRICE QUOTED	TOTALS
			GROUP 12		
106	1.00	EA	1270 MECHANICAL JOINT X FLANGE ADAPTERS, 4 INCH (09900)	42.50	42.50
			GROUP 13		
107	1.00	EA	1280 MECHANICAL JOINT X FLANGE ADAPTERS, 6 INCH (09901)	55.00	55.00
			GROUP 13		
108	1.00	EA	1290 MECHANICAL JOINT X FLANGE ADAPTERS, 8 INCH (09902)	84.00	84.00
			GROUP 13		
109	1.00	EA	1310 MECHANICAL JOINT CAP, 4 INCH (06701)	16.50	16.50
			GROUP 14		
110	1.00	EA	1320 MECHANICAL JOINT CAP, 6 INCH (06702)	30.50	30.50
			GROUP 14		
111	1.00	EA	1330 MECHANICAL JOINT CAP, 8 INCH (06703)	45.00	45.00
			GROUP 14		
112	1.00	EA	1380 MECHANICAL JOINT PLUG, 4 INCH (09001)	22.00	22.00
			GROUP 15		
113	1.00	EA	1390 MECHANICAL JOINT PLUG, 6 INCH (09002)	39.00	39.00
			GROUP 15		
114	1.00	EA	1400 MECHANICAL JOINT PLUG, 8 INCH (09003)	56.00	56.00

CIMSCO, INC.
1840 L & A ROAD
METAIRIE, LA 70001

DATE: 5/05/2021

Page 20

INVITATION TO BID FROM JEFFERSON PARISH - continued

BID NO.: 50-00134266

SEALED BID

ITEM NUMBER	QUANTITY	U/M	DESCRIPTION OF ARTICLES	UNIT PRICE QUOTED	TOTALS
			GROUP 15		
115	1.00	EA	1420 MECHANICAL JOINT PLUG, 12 INCH (09005)	94.00	94.00
			GROUP 15		
116	1.00	EA	1470 MECHANICAL JOINT OFFSET, 6 INCH BY 12 INCH (10778)	121.00	121.00
			GROUP 16		
117	1.00	EA	1480 MECHANICAL JOINT OFFSET, 8 INCH BY 12 INCH (10781)	178.00	178.00
			GROUP 16		
118	1.00	EA	1500 PRICE BROTHERS PIPE ADAPTER KITS, 16 INCH BY 24 INCH LENGTH (56760)	5380.00	5380.00
			GROUP 17		
119	1.00	EA	1510 PRICE BROTHERS PIPE ADAPTER KITS, 18 INCH BY 24 INCH LENGTH (56761)	6200.00	6200.00
			GROUP 17		
120	1.00	EA	1520 PRICE BROTHERS PIPE ADAPTER KITS, 20 INCH BY 24 INCH LENGTH (56762)	6600.00	6600.00
			GROUP 17		
121	1.00	EA	1530 PRICE BROTHERS PIPE ADAPTER KITS, 24 INCH BY 24 INCH LENGTH (56763)	7600.00	7600.00
			GROUP 17		
122	1.00	EA	1540 PRICE BROTHERS PIPE ADAPTER KITS, 30 INCH BY 24 INCH LENGTH (56764)	7900.00	7900.00
			GROUP 17		
123	1.00	EA	1550 PRICE BROTHERS PIPE ADAPTER KITS, 36 INCH BY 24 INCH LENGTH (56765)	9800.00	9800.00

CIMSCO, INC.
1840 L & A ROAD
METAIRIE, LA 70001

DATE: 5/05/2021

Page 21

INVITATION TO BID FROM JEFFERSON PARISH - continued

BID NO.: 50-00134266

SEALED BID

ITEM NUMBER	QUANTITY	U/M	DESCRIPTION OF ARTICLES	UNIT PRICE QUOTED	TOTALS
			GROUP 17		
124	1.00	EA	1560 PRICE BROTHERS PIPE ADAPTER KITS, 42 INCH BY 24 INCH LENGTH (56766)	10,500.00	10,500.00
			GROUP 17		
125	1.00	EA	1570 PRICE BROTHERS PIPE ADAPTER KITS, 48 INCH BY 24 INCH LENGTH (56767)	12,000.00	12,000.00
			GROUP 17		
126	1.00	EA	1710 FLANGED JOINT, 45 DEGREE BEND (PROTECTO 401 CERAMIC INTERIOR LINING) 10 INCH Group 18	525.00	525.00
			GROUP 18		
127	1.00	EA	1715 FLANGED JOINT, 45 DEGREE BEND (PROTECTO 401 CERAMIC INTERIOR LINING) 12 INCH (06155) Group 18	648.00	648.00
			GROUP 18		
128	1.00	EA	1770 FLANGED JOINT, 90 DEGREE BEND (PROTECTO 401 CERAMIC INTERIOR LINING) 3 INCH (06175) Group 19	170.00	170.00
			GROUP 19		
129	1.00	EA	1780 FLANGED JOINT, 90 DEGREE BEND (PROTECTO 401 CERAMIC INTERIOR LINING) 4 INCH (06176) Group 19	222.00	222.00
			GROUP 19		
130	1.00	EA	1790 FLANGED JOINT, 90 DEGREE BEND (PROTECTO 401 CERAMIC INTERIOR LINING) 6 INCH (06177) Group 19	261.00	261.00
			GROUP 19		
131	1.00	EA	1800 FLANGED JOINT, 90 DEGREE BEND (PROTECTO 401 CERAMIC INTERIOR LINING)	398.00	398.00

CIMSCO, INC.
1840 L & A ROAD
METAIRIE, LA 70001

DATE: 5/05/2021

Page 22

INVITATION TO BID FROM JEFFERSON PARISH - continued

BID NO.: 50-00134266

SEALED BID

ITEM NUMBER	QUANTITY	U/M	DESCRIPTION OF ARTICLES	UNIT PRICE QUOTED	TOTALS
132	1.00	EA	8 INCH (06178) Group 19		
			1820 FLANGED JOINT, 90 DEGREE BEND (PROTECTO 401 CERAMIC INTERIOR LINING)	739.00	739.00
133	1.00	EA	12 INCH (06180) Group 19		
			1870 FLANGED JOINT, 90 DEGREE BEND REDUCING (PROTECTO 401 CERAMIC INTERIOR LINING) 12 INCH BY 10 INCH (06200)	769.00	769.00
134	1.00	EA	Group 20		
			1880 FLANGED JOINT, 90 DEGREE BEND REDUCING (PROTECTO 401 CERAMIC INTERIOR LINING) 14 INCH BY 10 INCH (06203)	915.00	915.00
135	1.00	EA	Group 20		
			1890 FLANGED JOINT, CROSSES (PROTECTO 401 CERAMIC INTERIOR LINING) 4 INCH BY 4 INCH (07202)	258.00	258.00
136	1.00	EA	Group 21		
			1900 FLANGED JOINT, CROSSES (PROTECTO 401 CERAMIC INTERIOR LINING) 6 INCH BY 6 INCH (07203)	415.00	415.00
137	1.00	EA	Group 21		
			1930 FLANGED JOINT, CROSSES (PROTECTO 401 CERAMIC INTERIOR LINING) 12 INCH BY 12 INCH (07206)	1150.00	1150.00
138	1.00	EA	Group 21		
			1940 FLANGED JOINT, CROSSES (PROTECTO 401 CERAMIC INTERIOR LINING) 12 INCH BY 6 INCH (07209) A	951.00	951.00
139	1.00	EA	Group 21		
			1950 FLANGED JOINT, CROSSES (PROTECTO 401 CERAMIC INTERIOR LINING)	1480.00	1480.00

CIMSCO, INC.
1840 L & A ROAD
METAIRIE, LA 70001

DATE: 5/05/2021

Page 23

INVITATION TO BID FROM JEFFERSON PARISH - continued

BID NO.: 50-00134266

SEALED BID

ITEM NUMBER	QUANTITY	U/M	DESCRIPTION OF ARTICLES	UNIT PRICE QUOTED	TOTALS
140	1.00	EA	16 INCH BY 6 INCH (07212) A Group 21	138.00	138.00
			1960 FLANGED JOINT, CONCENTRIC REDUCERS (PROTECTO 401 CERAMIC INTERIOR LINING) 4 INCH BY 3 INCH (09101) A Group 22		
141	1.00	EA	1970 FLANGED JOINT, CONCENTRIC REDUCERS (PROTECTO 401 CERAMIC INTERIOR LINING) 6 INCH BY 3 INCH (09102) A Group 22	210.00	210.00
			1980 FLANGED JOINT, CONCENTRIC REDUCERS (PROTECTO 401 CERAMIC INTERIOR LINING) 6 INCH BY 4 INCH (09103) A Group 22	304.00	304.00
142	1.00	EA	1990 FLANGED JOINT, CONCENTRIC REDUCERS (PROTECTO 401 CERAMIC INTERIOR LINING) 8 INCH BY 6 INCH (09104) A Group 22	310.00	310.00
			2000 FLANGED JOINT, CONCENTRIC REDUCERS (PROTECTO 401 CERAMIC INTERIOR LINING) 10 INCH BY 6 INCH (09105) A Group 22	351.00	351.00
143	1.00	EA	2010 FLANGED JOINT, CONCENTRIC REDUCERS (PROTECTO 401 CERAMIC INTERIOR LINING) 10 INCH BY 8 INCH (09106) A Group 22	445.00	445.00
			2020 FLANGED JOINT, CONCENTRIC REDUCERS	530.00	530.00

CIMSCO, INC.
1840 L & A ROAD
METAIRIE, LA 70001

DATE: 5/05/2021

Page 24

INVITATION TO BID FROM JEFFERSON PARISH - continued

BID NO.: 50-00134266

SEALED BID

ITEM NUMBER	QUANTITY	U/M	DESCRIPTION OF ARTICLES	UNIT PRICE QUOTED	TOTALS
147	1.00	EA	(PROTECTO 401 CERAMIC INTERIOR LINING) 12 INCH BY 6 INCH (09107) A Group 22 2030 FLANGED JOINT, CONCENTRIC REDUCERS	540.00	540.00
148	1.00	EA	(PROTECTO 401 CERAMIC INTERIOR LINING) 12 INCH BY 8 INCH (09108) A Group 22 2040 FLANGED JOINT, CONCENTRIC REDUCERS	508.00	508.00
149	1.00	EA	(PROTECTO 401 CERAMIC INTERIOR LINING) 12 INCH BY 10 INCH (09109) A Group 22 2050 FLANGED JOINT, CONCENTRIC REDUCERS	603.00	603.00
150	1.00	EA	(PROTECTO 401 CERAMIC INTERIOR LINING) 14 INCH BY 8 INCH (09110) A Group 22 2060 FLANGED JOINT, CONCENTRIC REDUCERS	647.00	647.00
151	1.00	EA	(PROTECTO 401 CERAMIC INTERIOR LINING) 14 INCH BY 10 INCH (09111) A Group 22 2070 FLANGED JOINT, CONCENTRIC REDUCERS	898.00	898.00
152	1.00	EA	(PROTECTO 401 CERAMIC INTERIOR LINING) 16 INCH BY 12 INCH (09112) A Group 22 2080 FLANGED JOINT, CONCENTRIC REDUCERS	686.00	686.00
153	1.00	EA	(PROTECTO 401 CERAMIC INTERIOR LINING) 16 INCH BY 10 INCH (09114) A Group 22 2090 FLANGED JOINT, TEES (PROTECTO 401 CERAMIC INTERIOR LINING)	251.00	251.00

CIMSCO, INC.
1840 L & A ROAD
METAIRIE, LA 70001

DATE: 5/05/2021

Page 25

INVITATION TO BID FROM JEFFERSON PARISH - continued

BID NO.: 50-00134266

SEALED BID

ITEM NUMBER	QUANTITY	U/M	DESCRIPTION OF ARTICLES	UNIT PRICE QUOTED	TOTALS
154	1.00	EA	4 INCH BY 4 INCH BY 4 INCH (10102) Group 23	610.00	610.00
			2095 FLANGED JOINT, TEES (PROTECTO 401 CERAMIC INTERIOR LINING) 4 INCH BY 4 INCH BY 6 INCH (10102A) Group 23		
155	1.00	EA	2100 FLANGED JOINT, TEES (PROTECTO 401 CERAMIC INTERIOR LINING) 6 INCH BY 6 INCH BY 4 INCH (10103) A Group 23	352.00	352.00
			2110 FLANGED JOINT, TEES (PROTECTO 401 CERAMIC INTERIOR LINING) 6 INCH BY 6 INCH BY 6 INCH (10104) A Group 23	330.00	330.00
156	1.00	EA	2120 FLANGED JOINT, TEES (PROTECTO 401 CERAMIC INTERIOR LINING) 8 INCH BY 8 INCH BY 6 INCH (10105) A Group 23	498.00	498.00
			2130 FLANGED JOINT, TEES (PROTECTO 401 CERAMIC INTERIOR LINING) 8 INCH BY 8 INCH BY 8 INCH (10106) A Group 23	505.00	505.00
157	1.00	EA	2140 FLANGED JOINT, TEES (PROTECTO 401 CERAMIC INTERIOR LINING) 10 INCH BY 10 INCH BY 6 INCH (10108) A Group 23	518.70	518.70
			2150 FLANGED JOINT, TEES (PROTECTO 401 CERAMIC INTERIOR LINING) 10 INCH BY 10 INCH BY 10 INCH (10110) A Group 23	617.00	617.00
158	1.00	EA			
159	1.00	EA			
160	1.00	EA			

CIMSCO, INC.
1840 L & A ROAD
METAIRIE, LA 70001

DATE: 5/05/2021

Page 26

INVITATION TO BID FROM JEFFERSON PARISH - continued

BID NO.: 50-00134266

SEALED BID

ITEM NUMBER	QUANTITY	U/M	DESCRIPTION OF ARTICLES	UNIT PRICE QUOTED	TOTALS
161	1.00	EA	2160 FLANGED JOINT, TEES (PROTECTO 401 CERAMIC INTERIOR LINING) 12 INCH BY 12 INCH BY 6 INCH (10112) A Group 23	840.00	840.00
162	1.00	EA	2170 FLANGED JOINT, TEES (PROTECTO 401 CERAMIC INTERIOR LINING) 12 INCH BY 12 INCH BY 8 INCH (10113) A Group 23	875.00	875.00
163	1.00	EA	2180 FLANGED JOINT, TEES (PROTECTO 401 CERAMIC INTERIOR LINING) 12 INCH BY 12 INCH BY 12 INCH (10115) A Group 23	1015.00	1015.00
164	1.00	EA	2190 FLANGED JOINT, TEES (PROTECTO 401 CERAMIC INTERIOR LINING) 14 INCH BY 14 INCH BY 6 INCH (10117) A Group 23	1113.00	1113.00
165	1.00	EA	2200 FLANGED JOINT, TEES (PROTECTO 401 CERAMIC INTERIOR LINING) 14 INCH BY 14 INCH BY 10 INCH (10119) A Group 23	1200.00	1200.00
166	1.00	EA	2210 FLANGED JOINT, TEES (PROTECTO 401 CERAMIC INTERIOR LINING) 16 INCH BY 16 INCH BY 16 INCH (10121) A Group 23	1367.00	1367.00
167	1.00	EA	2220 FLANGED JOINT, TRUE WYES (PROTECTO 401 CERAMIC INTERIOR LINING) 4 INCH (10802) A Group 24	241.00	241.00
168	1.00	EA	2710 - FLANGE JOINT, TEE, 4 IN X 4 IN X 4 IN, DUCTILE IRON, FLANGED, FUSION EPOXY	142.00	142.00

CIMSCO, INC.
1840 L & A ROAD
METAIRIE, LA 70001

DATE: 5/05/2021

Page 27

INVITATION TO BID FROM JEFFERSON PARISH - continued

BID NO.: 50-00134266

SEALED BID

ITEM NUMBER	QUANTITY	U/M	DESCRIPTION OF ARTICLES	UNIT PRICE QUOTED	TOTALS
169	1.00	EA	COATED,NO ACCESSORIES,MUST HAVE AWWA, ASTM,OR ANSI APPROVAL AND WRITTEN PROOF OF ISO9001 CERTIFICATION (10102B) GROUP 25 2720 - FLANGE JOINT, TEE,6 INCH X 6 INCH	182.00	182.00
170	1.00	EA	X 4 INCH,DUCTILE IRON, FLANGED,FUSION EPOXY COATED,NO ACCESSORIES,MUST HAVE AWWA,ASTM,OR ANSI APPROVAL AND WRITTEN PROOF OF ISO9001 CERTIFICATION (101030) GROUP 25 2730 - FLANGED JOINT,TEE 6 IN X 6 IN X 6 IN, DUCTILE IRON,FLANGED,FUSION	251.00	251.00
171	1.00	EA	EPOXY COATED, WITHOUT ACCESSORIES,MUST HAVE AWWA, ASTM, OR ANSI APPROVAL AND WRITTEN PROOF OF ISO9001 CERTIFICATION (101040) GROUP 25 2740 - FLANGE JOINT,TEE,8 INCH X 8 INCH X 6 INCH ,DUCTILE IRON,FLANGED,FUSION	298.00	298.00
172	1.00	EA	EPOXY COATED,NO ACCESSORIES,MEETS AWWA, ASTM, OR ANSI APPROVAL AND WRITTEN PROOF OF ISO 9000 CERTIFICATION (101050) GROUP 25 2750 - FLANGED JOINT, TEE,8 INCH X 8	305.00	305.00
173	1.00	EA	INCH X 8 INCH, DUCTILE IRON,FLANGED, FUSION EPOXY COATED IN, NO ACCESSORIES, MEETS AWWA, ASTM,OR ANSI AND WRITTEN PROOF OF ISO 9000 CERTIFICATION. (101060) GROUP 25 2780 - FLANGED JOINT,TEE,12 IN X 12 IN DUCTILE IRON,FLANGED,FUSION EPOXY COATED	600.00	600.00
174	1.00	EA	WITHOUT ACCESSORIES,MUST HAVE AWWA,ASTM OR ANSI APPROVAL AND WRITTEN PROOF OF ISO9001 CERTIFICATION (101150) GROUP 25 2790 - REDUCER,CONCENTRIC,4 IN X 3 IN, DUCTILE IRON, FLANGED,FUSION EPOXY	151.60	151.60

CIMSCO, INC.
1840 L & A ROAD
METAIRIE, LA 70001

DATE: 5/05/2021

Page 28

INVITATION TO BID FROM JEFFERSON PARISH - continued

BID NO.: 50-00134266

SEALED BID

ITEM NUMBER	QUANTITY	U/M	DESCRIPTION OF ARTICLES	UNIT PRICE QUOTED	TOTALS
175	1.00	EA	COATED,WITHOUT ACCESSORIES. 00-0091010 GROUP 26 2800 - PLUG,6 IN,DUCTILE IRON,MECH JOINT,WITH 2 IN FEMALE PIPE THREAD TAP IN CENTER,EPOXY COATED IN AND OUT. 00-009002A	56.00	56.00
176	1.00	EA	2810 - PLUG,8 IN,DUCTILE IRON,MECH JOINT,WITH 2 IN FEMALE PIPE THREAD TAP IN CENTER,EPOXY COATED IN AND OUT. 00-009003A	78.75	78.75
177	1.00	EA	2820 - PLUG,12 IN DUCTILE IRON, MECH JOINT WITH 2 IN FEMALE PIPE THREAD TAP IN CENTER,EPOXY COATED IN AND OUT, DOMESTIC, NO ACCESSORIES 00-009005A	115.00	115.00
178	1.00	EA	2830 - REDUCER,CONCENTRIC,6 IN X 4 IN, DUCTILE IRON,FLANGED,FUSION EPOXY COATED ,WITHOUT ACESSORIES 00-0091030 GROUP 26	83.00	83.00
179	1.00	EA	2840 - REDUCER,CONCENTRIC,8 IN X 6 IN, DUCTILE IRON, FLANGED EPOXY COATED IN AND OUT DOMESTIC, MEETS AWWA 00-0091040 GROUP 26	136.00	136.00
180	1.00	EA	2850 - REDUCER,CONCENTRIC,12 IN X 8 IN, DUCTILE IRON, FLANGED,FUSION EPOXY COATED, WITHOUT ACCESSORIES. 00-0091080 GROUP 26	284.00	284.00
181	1.00	EA	2860 - BEND,45 DEGREE,6 INCH ,DUCTILE IRON,FLANGED,FUSION EPOXY COATED WITHOUT ACCESSORIES 00-006152 GROUP 18	108.00	108.00
182	1.00	EA	2870 - BEND,90 DEGREE,3 INCH ,DUCTILE IRON, FLANGED,FUSION EPOXY COATED,	56.00	56.00

CIMSCO, INC.
1840 L & A ROAD
METAIRIE, LA 70001

DATE: 5/05/2021

Page 29

INVITATION TO BID FROM JEFFERSON PARISH - continued

BID NO.: 50-00134266

SEALED BID

ITEM NUMBER	QUANTITY	U/M	DESCRIPTION OF ARTICLES	UNIT PRICE QUOTED	TOTALS
			WITHOUT ACCESSORIES 00-006175 GROUP 19		

Ductile Iron Fittings Contract

(Ductile Iron Fittings and Price Brothers' Pipe Adapter Kits)

ITEMS INCLUDED IN THIS CONTRACT:

- GROUP 1. Mechanical Joint Repair Sleeves (Lines 0010 thru 0280)
- GROUP 2. Mechanical Joint 90° Bends (Lines 0290 thru 0400)
- GROUP 3. Mechanical Joint x Flange 90° Bends (Lines 0410 thru 0460)
- GROUP 4. Mechanical Joint 45° Bends (Lines 0470 thru 0580)
- GROUP 5. Mechanical Joint x Flange 45° Bends (Lines 0600 thru 0630)
- GROUP 6. Mechanical Joint 22-½° Bends (Lines 0640 thru 0730)
- GROUP 7. Mechanical Joint 11-¼° Bends (Lines 0750 thru 0780)
- GROUP 8. Mechanical Joint Tees (Lines 0790 thru 0920)
- GROUP 9. Mechanical Joint x Flange Tees (Lines 0970 thru 1025)
- GROUP 10. Mechanical Joint Swivel Tees (Lines 1040 thru 1110)
- GROUP 11. Mechanical Joint Crosses (Lines 1130 thru 1150)
- GROUP 12. Mechanical Joint Concentric Reducers (Lines 1160 thru 1250)
- GROUP 13. Mechanical Joint x Flange Adapters (Lines 1270 thru 1290)
- GROUP 14. Mechanical Joint Caps (Lines 1310 thru 1330)
- GROUP 15. Mechanical Joint Plugs (Lines 1380 thru 1420)
- GROUP 16. Mechanical Joint Offsets (Lines 1470 thru 1480)
- GROUP 17. Price Brothers Adapter Kits (Lines 1500 thru 1570)
- GROUP 18. Flanged Joint, 45° Bend (Protecto 401 Ceramic Interior Lining)
(Lines 1710 thru 1715 and Line 2860)
- GROUP 19. Flanged Joint, 90° Bend (Protecto 401 Ceramic Interior Lining)
(Lines 1770 thru 1820 and Line 2870)
- GROUP 20. Flanged Joint, 90° Bend, Reducing (Protecto 401 Ceramic Interior
Lining) (Lines 1870 thru 1880)
- GROUP 21. Flanged Joint, Crosses (Protecto 401 Ceramic Interior Lining)
(Lines 1890 thru 1950)
- GROUP 22. Flanged Joint, Concentric Reducers (Protecto 401 Ceramic Interior
Lining) (Lines 1960 thru 2080)
- GROUP 23. Flanged Joint, Tees (Protecto 401 Ceramic Interior Lining)
(Lines 2090 thru 2210)
- GROUP 24. Flanged Joint, True Wyes (Protecto 401 Ceramic Interior Lining) (Line
2220)
- GROUP 25. Flange Joint, Tees (Protecto 401 Ceramic Lining)
(Lines 2710 thru 2780)
- GROUP 26. Flange Joint, Concentric Reducer (Protecto 401 Ceramic Lining)
(Line 2790 and Lines 2830 thru 2850)

*** Note: This contract may be awarded accordingly to the low bidder of each group mentioned above. ***

Contract Terms:

This is a one year contract for supply of Ductile Iron Fittings and Adapter Kits for Price Brothers pipe for the Department of Public Works, Waterworks, and all Jefferson Parish agencies and municipalities.

Warranty:

Products shall be warranted that they are manufactured in accordance with the applicable material specifications and are free from defects in workmanship and materials for one year after delivery. Any defective items sold under this contract shall be replaced at no cost to the purchaser.

General Specifications:

This specification is prepared for a one (1) year contract for a supply of Ductile Iron Fittings and Adapter Kits for Price Brothers pipe for the Parish of Jefferson, Department of Water, East and Westbank.

The quantities shown on the proposal guide are approximate quantities to be acquired by Jefferson Parish over a one (1) year period. Actual usage will be on an "as needed" basis.

Domestic as well as globally sourced (foreign) ductile iron fittings shall be allowed. All globally sourced (foreign) fittings shall also be manufactured at an ISO (International Organization for Standardization) registered manufacturer, which manufacturer shall have current ISO 9001 certification for standardization for fitting products. These manufacturing facilities must be covered under periodic audits by third party accreditation bodies for evaluations. These evaluations shall include manufacturing processes, quality control, corrective and preventive actions, and document control. In addition, distribution centers must be audited by third party approval agencies for periodic confirmation tests and surveillance audits. These periodic confirmation tests and surveillance audits shall document continuation of product approvals by auditing the entire quality systems including design, infrastructure, system implementation, distribution, training, quality control and assurance, and document control. All fittings must be manufactured in accordance with NSF 61.

All technical literature containing the brand and part numbers that your company is bidding on must be submitted with the bid.

The manufacturer's name and the country of origin must be stamped on all fittings.

Bid delivery shall include all freight and delivery costs to Jefferson Parish warehouse locations on the East and West Banks of Jefferson Parish.

Technical Specifications:

I. Ductile Iron Fittings:

Fittings shall be available in 3" through 48" sizes and shall be cast from ductile iron in accordance with ANSI/AWWA C110/A21.10 and ANSI/AWWA C111/A21.11. Compact fittings shall be available in 3" through 24" and shall be cast from ductile iron in

accordance with ANSI/AWWA C153/A21.53. All fittings shall have working pressure rating of 350 psi.

Ductile iron fittings shall have factory applied fusion bonded epoxy coating inside and out, in accordance with all applicable provisions of AWWA C-550 and ANSI/AWWA C116/A21.16-98 (protective fusion-bonded epoxy coatings for the interior and exterior surfaces of ductile iron fittings for water supply services).

II. Adapter Kits For Price Brothers Pipe (16" - 48"):

The purpose of these adapter kits is to connect Price Brothers pipe (Prestressed Concrete Cylinder Pipe, or PCCP) to valves, PVC C-900 or ductile iron pipe. Each kit shall include the following for each size:

- A) One each, price brother bell x mechanical joint spigot, minimum 18" long.
- B) One each, price brother spigot x mechanical joint spigot, minimum 18" long.
- C) Two each, PCCP O-ring gaskets.
- D) Two each, PCCP diaper (grout bands).

III. Ductile Iron Fittings (Protecto 401 Interior Lining):

Fittings shall be available in 3" through 48" sizes and shall be cast from ductile iron in accordance with ANSI/AWWA C110/A21.10 and ANSI/AWWA C111/A21.11. Compact fittings shall be available in 3" through 24" and shall be cast from ductile iron in accordance with ANSI/AWWA C153/A21.53. All fittings shall have working pressure rating of 350 psi.

Ductile iron fittings shall have a factory applied interior coating/lining of "Protecto 401" ceramic epoxy lining as per manufacturer's recommendations and requirements for sanitary sewer applications and factory asphaltic exterior coating.

STANDARD INSURANCE REQUIREMENTS FOR BIDDING PURPOSES

All required insurance under this bid shall conform to Jefferson Parish Resolution No. 113646 or No. 113647, as applicable. Contractors may not commence any work under any ensuing contract unless and until all required insurance and associated evidentiary requirements thereto have been met, along with any additional specifications contained in the **Invitation to Bid**. Except as where otherwise precluded by law, the Parish Attorney or his designee, with the concurrence of the Director of Risk Management or his designee, may agree on a case-by-case basis, to deviate from Jefferson Parish's standard insurance requirements, as provided in this Section. Vendors requesting deviation therefrom shall submit such requests in writing, along with compelling substantiation, to the Purchasing Department prior to the bid's due date. Any changes to the insurance requirements will be reflected in the bid specifications and addenda. Prior to contract execution and at all times thereafter during the term of such contract, contractors must provide and continuously maintain all coverages as required by the foregoing Resolutions, and the contract documents. Failure to do so shall be grounds for suspension, discontinuation or termination of the contract.

For bidding purposes, bidders must submit with bid submission a current (valid) insurance certificate evidencing the required coverages. Failure to comply will cause bid to be rejected. The current insurance certificate will be used for proof of insurance at time of evaluation. Thereafter, and prior to contract execution, the low bidder will be required to provide final insurance certificates to the Parish which shall name **the Jefferson Parish, its Districts Departments and Agencies under the direction of the Parish President and the Parish Council** as additional insureds regarding negligence by the contractor for the Commercial General Liability and the Comprehensive Automobile Liability policies. Additionally, said certificates should reflect the name of the Parish Department receiving goods and services and reference the respective Jefferson Parish bid number.

JEFFERSON PARISH REQUIRED STANDARD INSURANCE

☒ **WORKER'S COMPENSATION INSURANCE**

As required by Louisiana State Statute, exception; Employer's Liability, Section B shall be \$1,000,000 per occurrence when Work is to be over water and involves maritime exposures to cover all employees not covered under the State Worker's Compensation Act, otherwise this limit shall be no less than \$500,000 per occurrence.

Note: If your company is not required by law to carry workmen's compensation insurance, i.e. not a Louisiana company, sole employee of the company, then bidders must request a workmen's compensation insurance declaration affidavit prior to the bid opening date. This insurance declaration affidavit must be fully completed, signed, properly notarized and submitted with the bid. A scanned copy may be submitted with the bid; however, the successful bidder must submit the original affidavit in its original format and without material alteration upon contract execution. Failure to comply will result in the bid submission being

rejected as non-responsive. The Parish reserves the right to award bid to the next lowest responsive and responsible bidder in this event.

☒ **COMMERCIAL GENERAL LIABILITY**

Shall provide limits not less than the following: \$1,000,000.00 Combined Single Limit per Occurrence for bodily injury and property damage.

☒ **COMPREHENSIVE AUTOMOBILE LIABILITY**

Bodily injury liability \$1,000,000.00 each person; \$1,000,000.00 each occurrence.
Property Damage Liability \$1,000,000.00 each occurrence.

Note: This category may be omitted if bidders do not/will not utilize company vehicles for the project or do not possess company vehicles. Bidder must request an automobile insurance declaration affidavit prior to the bid opening date. This insurance declaration affidavit must be fully completed, signed, properly notarized and submitted with the bid. A scanned copy of the completed, signed and properly notarized affidavit may be submitted with the bid; however, the successful bidder must submit the original affidavit in its original format and without material alteration upon contract execution. Failure to comply will result in the bid submission being rejected as non-responsive. The Parish reserves the right to award bid to the next lowest responsive and responsible bidder in this event.

DEDUCTIBLES - The Parish Attorney with concurrence of the Director of Risk Management have waived the deductible section of the Terms and Conditions for all Invitations to Bid, until further notice.

UMBRELLA LIABILITY COVERAGE

An umbrella policy or excess may be used to meet minimum requirements.

FOR CONSTRUCTION AND RENOVATION PROJECTS:

The following are required if selected below. Such insurance is due upon contract execution.

☐ **OWNER'S PROTECTIVE LIABILITY**

To be for the same limits of liability for bodily injury and property damage liability established for commercial general liability.

☐ **BUILDER'S RISK INSURANCE**

The contractor shall maintain Builder's Risk Insurance at his own expense to insure both the owner (Parish of Jefferson) and contractor as their interest may appear.



CERTIFICATE OF LIABILITY INSURANCE

DATE (MM/DD/YYYY)

5/18/2021

THIS CERTIFICATE IS ISSUED AS A MATTER OF INFORMATION ONLY AND CONFERS NO RIGHTS UPON THE CERTIFICATE HOLDER. THIS CERTIFICATE DOES NOT AFFIRMATIVELY OR NEGATIVELY AMEND, EXTEND OR ALTER THE COVERAGE AFFORDED BY THE POLICIES BELOW. THIS CERTIFICATE OF INSURANCE DOES NOT CONSTITUTE A CONTRACT BETWEEN THE ISSUING INSURER(S), AUTHORIZED REPRESENTATIVE OR PRODUCER, AND THE CERTIFICATE HOLDER.

IMPORTANT: If the certificate holder is an ADDITIONAL INSURED, the policy(ies) must be endorsed. If SUBROGATION IS WAIVED, subject to the terms and conditions of the policy, certain policies may require an endorsement. A statement on this certificate does not confer rights to the certificate holder in lieu of such endorsement(s).

PRODUCER E B Ducasse Insurance Agency, Inc 3200 Ridgelake Dr, Suite 401 Metairie LA 70002		CONTACT NAME: Darly Oser PHONE (A/C, No, Ext): (504) 840-9883 FAX (A/C, No): (504) 840-9889 E-MAIL ADDRESS: doser@ebducasse.com	
INSURED Cimsco Inc 1840 L and A Road Metairie LA 70001-6237		INSURER(S) AFFORDING COVERAGE INSURER A: United Fire and Indemnity Co INSURER B: Technology Insurance Co INSURER C: INSURER D: INSURER E: INSURER F:	
		NAIC # 19496 42376	

COVERAGES**CERTIFICATE NUMBER: 20 - 21****REVISION NUMBER:**

THIS IS TO CERTIFY THAT THE POLICIES OF INSURANCE LISTED BELOW HAVE BEEN ISSUED TO THE INSURED NAMED ABOVE FOR THE POLICY PERIOD INDICATED. NOTWITHSTANDING ANY REQUIREMENT, TERM OR CONDITION OF ANY CONTRACT OR OTHER DOCUMENT WITH RESPECT TO WHICH THIS CERTIFICATE MAY BE ISSUED OR MAY PERTAIN, THE INSURANCE AFFORDED BY THE POLICIES DESCRIBED HEREIN IS SUBJECT TO ALL THE TERMS, EXCLUSIONS AND CONDITIONS OF SUCH POLICIES. LIMITS SHOWN MAY HAVE BEEN REDUCED BY PAID CLAIMS.

INSR LTR	TYPE OF INSURANCE	ADDL INSD	SUBR WVD	POLICY NUMBER	POLICY EFF (MM/DD/YYYY)	POLICY EXP (MM/DD/YYYY)	LIMITS
A	<input checked="" type="checkbox"/> COMMERCIAL GENERAL LIABILITY <input type="checkbox"/> CLAIMS-MADE <input checked="" type="checkbox"/> OCCUR GEN'L AGGREGATE LIMIT APPLIES PER: <input type="checkbox"/> POLICY <input checked="" type="checkbox"/> PROJECT <input type="checkbox"/> LOC OTHER:			60418952	9/1/2020	9/1/2021	EACH OCCURRENCE \$ 1,000,000 DAMAGE TO RENTED PREMISES (Ea occurrence) \$ 100,000 MED EXP (Any one person) \$ 5,000 PERSONAL & ADV INJURY \$ 1,000,000 GENERAL AGGREGATE \$ 2,000,000 PRODUCTS - COMP/OP AGG \$ 2,000,000
A	<input checked="" type="checkbox"/> AUTOMOBILE LIABILITY <input checked="" type="checkbox"/> ANY AUTO <input type="checkbox"/> ALL OWNED AUTOS <input type="checkbox"/> HIRED AUTOS <input type="checkbox"/> SCHEDULED AUTOS <input type="checkbox"/> NON-OWNED AUTOS			60418952	9/1/2020	9/1/2021	COMBINED SINGLE LIMIT (Ea accident) \$ 1,000,000 BODILY INJURY (Per person) \$ BODILY INJURY (Per accident) \$ PROPERTY DAMAGE (Per accident) \$
A	<input checked="" type="checkbox"/> UMBRELLA LIAB <input checked="" type="checkbox"/> OCCUR <input type="checkbox"/> EXCESS LIAB <input type="checkbox"/> CLAIMS-MADE DED \$ RETENTION \$			60418952	9/1/2020	9/1/2021	EACH OCCURRENCE \$ 1,000,000 AGGREGATE \$ 1,000,000
B	WORKERS COMPENSATION AND EMPLOYERS' LIABILITY ANY PROPRIETOR/PARTNER/EXECUTIVE OFFICER/MEMBER EXCLUDED? (Mandatory in NH) If yes, describe under DESCRIPTION OF OPERATIONS below	Y/N <input type="checkbox"/>	N/A	TWC398818	9/1/2020	9/1/2021	<input checked="" type="checkbox"/> PER STATUTE E.L. EACH ACCIDENT \$ 1,000,000 E.L. DISEASE - EA EMPLOYEE \$ 1,000,000 E.L. DISEASE - POLICY LIMIT \$ 1,000,000

DESCRIPTION OF OPERATIONS / LOCATIONS / VEHICLES (ACORD 101, Additional Remarks Schedule, may be attached if more space is required)

This certificate of insurance neither affirmatively nor negatively alters, amends, nor extends the coverage afforded by Policy Number 60418952 issued by United Fire and Indemnity and Policy Number TWC398818 issued by Technology Insurance Company.

The general liability and auto liability policies contain a blanket additional insured and blanket waiver of subrogation if required by written contract. The general liability is primary and non contributory. The Workers Comp policy contains a blanket waiver of subrogation if required by written contract.

CERTIFICATE HOLDER**CANCELLATION**

Jefferson Parish Purchasing Department 200 Derbigny Street Suite 4400 Gretna, LA 70053	SHOULD ANY OF THE ABOVE DESCRIBED POLICIES BE CANCELLED BEFORE THE EXPIRATION DATE THEREOF, NOTICE WILL BE DELIVERED IN ACCORDANCE WITH THE POLICY PROVISIONS. AUTHORIZED REPRESENTATIVE E Ducasse Sr./WAYNE <i>Edward B. Ducasse, Sr.</i>
-------------------------------------------------------------------------------------------------	------------------------------------------------------------------------------------------------------------------------------------------------------------------------------------------------------------------------------------------------------

© 1988-2014 ACORD CORPORATION. All rights reserved.

COMMENTS/REMARKS

Bid #50-00134266

CORPORATE RESOLUTION

EXCERPT FROM MINUTES OF MEETING OF THE BOARD OF DIRECTORS OF
CIMSCO, INC.
INCORPORATED.

AT THE MEETING OF DIRECTORS OF CIMSCO, INC.
INCORPORATED, DULY NOTICED AND HELD ON February 6, 2020
A QUORUM BEING THERE PRESENT, ON MOTION DULY MADE AND SECONDED. IT
WAS:

RESOLVED THAT Timothy Randall, BE AND IS HEREBY
APPOINTED, CONSTITUTED AND DESIGNATED AS AGENT AND ATTORNEY-IN-
FACT OF THE CORPORATION WITH FULL POWER AND AUTHORITY TO ACT ON
BEHALF OF THIS CORPORATION IN ALL NEGOTIATIONS, BIDDING, CONCERNS
AND TRANSACTIONS WITH THE PARISH OF JEFFERSON OR ANY OF ITS AGENCIES,
DEPARTMENTS, EMPLOYEES OR AGENTS, INCLUDING BUT NOT LIMITED TO, THE
EXECUTION OF ALL BIDS, PAPERS, DOCUMENTS, AFFIDAVITS, BONDS, SURETIES,
CONTRACTS AND ACTS AND TO RECEIVE ALL PURCHASE ORDERS AND NOTICES
ISSUED PURSUANT TO THE PROVISIONS OF ANY SUCH BID OR CONTRACT, THIS
CORPORATION HEREBY RATIFYING, APPROVING, CONFIRMING, AND ACCEPTING
EACH AND EVERY SUCH ACT PERFORMED BY SAID AGENT AND ATTORNEY-IN-
FACT.

I HEREBY CERTIFY THE FOREGOING TO BE
A TRUE AND CORRECT COPY OF AN
EXCERPT OF THE MINUTES OF THE ABOVE
DATED MEETING OF THE BOARD OF
DIRECTORS OF SAID CORPORATION, AND
THE SAME HAS NOT BEEN REVOKED OR
RESCINDED.

Ashley E. Riviere
SECRETARY-TREASURER

3/11/21
DATE



JEFFERSON PARISH

DEPARTMENT OF PURCHASING

CYNTHIA LEE SHENG
PARISH PRESIDENT

RENNY SIMNO
DIRECTOR

May 05, 2021

ADDENDUM #1

Bid Number: 50-00134266

Bid Opening Date: May 18, 2021

Description of Bid: ONE (1) YEAR CONTRACT FOR A SUPPLY OF DUCTILE IRON FITTINGS AND ADAPTER KITS FOR THE JEFFERSON PARISH DEPARTMENT OF PUBLIC WORKS-WATER AND ALL JEFFERSON PARISH AGENCIES AND MUNICIPALITIES

REVISION:

- SPECS HAS BEEN REVISED- BID BOND HAS BEEN REMOVED
- BID FORM HAS BEEN REVISED

PLEASE USE REVISED PER ADDENDUM 1 BID FORM

Sincerely,

Donna M. Evans

Donna M. Evans
Buyer II

Jefferson Parish Purchasing Department

Bidders must acknowledge all addenda on the bid form. Bidder acknowledges receipt of This addendum on the bid form as indicated. Failure to do so will result in bid rejection.

This addendum is a part of the contract documents and modifies the original bidding documents and specifications. The contents of this addendum shall be included in the contract documents. Changes made by this addendum shall take precedence over the documents of earlier date.

GENERAL GOVERNMENT BLDG. — 200 DERBIGNY ST., SUITE 4400, GRETNA, LA 70053
OFFICE 504.364.2678

JOSEPH S. YENNI BLDG. — 1221 ELMWOOD PARK BLVD., SUITE 404, JEFFERSON, LA 70123
OFFICE 504.364.2678
EMAIL: PURCHASING@JEFFPARISH.NET WEBSITE: WWW.JEFFPARISH.NET

Non-Public Works Bid Affidavit Instructions

- Affidavit is supplied as a courtesy to Affiants, but it is the responsibility of the affiant to insure the affidavit they submit to Jefferson Parish complies, in both form and content, with federal, state and parish laws.
- Affidavit must be signed by an authorized representative of the entity or the affidavit will not be accepted.
- Affidavit must be notarized or the affidavit will not be accepted.
- Notary must sign name, print name, and include bar/notary number, or the affidavit will not be accepted.
- Affiant **MUST** select either A or B when required or the affidavit will not be accepted.
- Affiants who select choice A must include an attachment or the affidavit will not be accepted.
- If both choice A and B are selected, the affidavit will not be accepted.
- Affidavit marked N/A will not be accepted.
- It is the responsibility of the Affiant to submit a new affidavit if any additional campaign contributions are made after the affidavit is executed but prior to the time the council acts on the matter.

Instruction sheet may be omitted when submitting the affidavit

Non-Public Works Bid

AFFIDAVIT

STATE OF Louisiana

PARISH/COUNTY OF Jefferson

BEFORE ME, the undersigned authority, personally came and appeared: _____

Timothy Randall, (Affiant) who after being by me duly sworn, deposed and said that he/she is the fully authorized SALES of LIMSCO INC (Entity), the party who submitted a bid in response to Bid Number 5000134266, to the Parish of Jefferson.

Affiant further said:

Campaign Contribution Disclosures

(Choose A or B, if option A is indicated please include the required attachment):

Choice A _____ Attached hereto is a list of all campaign contributions, including the date and amount of each contribution, made to current or former elected officials of the Parish of Jefferson by Entity, Affiant, and/or officers, directors and owners, including employees, owning 25% or more of the Entity during the two-year period immediately preceding the date of this affidavit or the current term of the elected official, whichever is greater. Further, Entity, Affiant, and/or Entity Owners have not made any contributions to or in support of current or former members of the Jefferson Parish Council or the Jefferson Parish President through or in the name of another person or legal entity, either directly or indirectly.

Choice B X there are NO campaign contributions made which would require disclosure under Choice A of this section.

Debt Disclosures

(Choose A or B, if option A is indicated please include the required attachment):

Choice A _____ Attached hereto is a list of all debts owed by the affiant to any elected or appointed official of the Parish of Jefferson, and any and all debts owed by any elected or appointed official of the Parish to the Affiant.

Choice B X There are NO debts which would require disclosure under Choice A of this section.

Affiant further said:

That Affiant has employed no person, corporation, firm, association, or other organization, either directly or indirectly, to secure the public contract under which he received payment, other than persons regularly employed by the Affiant whose services in connection with the construction, alteration or demolition of the public building or project or in securing the public contract were in the regular course of their duties for Affiant; and

[The remainder of this page is intentionally left blank.]

That no part of the contract price received by Affiant was paid or will be paid to any person, corporation, firm, association, or other organization for soliciting the contract, other than the payment of their normal compensation to persons regularly employed by the Affiant whose services in connection with the construction, alteration or demolition of the public building or project were in the regular course of their duties for Affiant.

Timothy Randall
Signature of Affiant

Timothy RANDALL
Printed Name of Affiant

SWORN AND SUBSCRIBED TO BEFORE ME
ON THE 23rd DAY OF April, 2021.

Lisa Orlando
Notary Public

LISA ORLANDO
Printed Name of Notary

36612
Notary/Bar Roll Number

My commission expires upon death



OFFICIAL SEAL
LISA ORLANDO
NOTARY PUBLIC
STATE OF LOUISIANA BAR NO. 36612
COMMISSION ISSUED FOR LIFE

☐ DOMESTIC

☐ NON-DOMESTIC

SUBMITTAL: C153 MECHANICAL JOINT PRODUCT

(Current revisions for the noted Standards apply)

SIZES:

2" - 64" (2" not included in ANSI/AWWA C153 standard)

STANDARDS:

ANSI/AWWA C153/A21.53, NFPA13/24, 3"-16" UL and 3"-10" FM listed & approved (File - Tyler Union)

MATERIAL:

Cast of ASTM A536 qualified ductile iron. Date code is cast on and required for traceability.

PRESSURE RATING:

*Flanged fittings rated at 250 psi. Mechanical joints 2" - 24" rated at 350 psi and 30" - 48" at 250 psi.

*Note: With rubber annular ring flange gasket, 2" - 24" Flanged fittings can be rated at 350 psi.

Note: Wyes over 12" are not pressure rated. Contact Tyler Union for rating in your application.

DEFLECTION:

Joint deflection 5° max for 2" - 12" and 3° max for 14" - 48". Reduces by 50% at nominal pipe & fitting diameters

NSF-61 & NSF372:

Meets all requirements including Annex G, Tyler Union's Underwriters Laboratory listing MH16439.

ASPHALT COATING:

Per ANSI/AWWA C104/A21.4 and ANSI/AWWA C153/A21.53.

CEMENT LINING:

Per ANSI/AWWA C104/A21.4, with double cement lining available upon request.

EPOXY COATING:

Fusion bonded epoxy per ANSI/AWWA C116/A21.16. Additional coatings available upon request.

BARE FITTINGS:

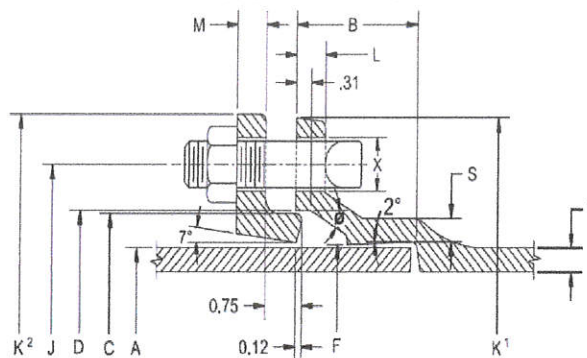
Available upon request.

FASTNERS:

High strength low alloy weathering steel per ANSI/AWWA C111/A21.11 and ASTM A242

INSTALLATION:

Install per AWWA C600/C651 using pipe conforming to ANSI/AWWA C151/A21.51 or AWWA C900/905.



NOMINAL JOINT DIMENSIONS IN INCHES

BOLTS

Size Inches	A Dia. DI Pipe	B Hub Depth	C Dia. GLAND	D Dia.	F Dia.	J Dia. GLAND	K' Dia.	K² Dia. GLAND	L	M GLAND	S	T	X	Size	Qty.
2	2.51	2.50	3.50	3.60	2.61	4.75	6.19	6.89	0.58	0.62	0.36	0.30	3/4	5/8x3	2
3	3.96	2.50	4.84	4.94	4.06	6.19	7.62	7.69	0.58	0.62	0.39	0.33	3/4	5/8x3	4
4	4.80	2.50	5.92	6.02	4.90	7.50	9.06	9.12	0.60	0.75	0.39	0.34	7/8	3/4x3-1/2	4
6	6.90	2.50	8.02	8.12	7.00	9.50	11.06	11.12	0.63	0.88	0.43	0.36	7/8	3/4x3-1/2	6
8	9.05	2.50	10.17	10.27	9.15	11.75	13.31	13.37	0.66	1.00	0.45	0.38	7/8	3/4x4	6
10	11.10	2.50	12.22	12.34	11.20	14.00	15.62	15.62	0.70	1.00	0.47	0.40	7/8	3/4x4	8
12	13.20	2.50	14.32	14.44	13.30	16.25	17.88	17.88	0.73	1.00	0.49	0.42	7/8	3/4x4	8
14	15.30	3.50	16.40	16.54	15.44	18.75	20.31	20.25	0.79	1.25	0.55	0.47	7/8	3/4x4-1/2	10
16	17.40	3.50	18.50	18.64	17.54	21.00	22.56	22.50	0.85	1.31	0.58	0.50	7/8	3/4x4-1/2	12
18	19.50	3.50	20.60	20.74	19.64	23.25	24.83	24.75	1.00	1.38	0.68	0.54	7/8	3/4x4-1/2	12
20	21.60	3.50	22.70	22.84	21.74	25.50	27.08	27.00	1.02	1.44	0.69	0.57	7/8	3/4x4-1/2	14
24	25.80	3.50	26.90	27.04	25.94	30.00	31.58	31.50	1.02	1.56	0.75	0.61	7/8	3/4x5	16
30	32.00	4.50	33.29	33.46	32.17	36.88	39.12	39.12	1.31	2.00	0.82	0.66	1-1/8	1x6	20
36	38.30	4.50	39.59	39.76	38.47	43.75	46.00	46.00	1.45	2.00	1.00	0.74	1-1/8	1x6	24
42	44.50	4.50	45.79	45.96	44.67	50.62	53.12	53.12	1.45	2.00	1.25	0.82	1-3/8	1-1/4x6-1/2	28
48	50.80	4.50	52.09	52.26	50.97	57.50	60.00	60.00	1.45	2.00	1.35	0.90	1-3/8	1-1/4x6-1/2	32
54	Available on Request														
60	Available on Request														
64	Available on Request														

Anniston: 1501 W 17th St. • Anniston, AL 36201 • (800) 226-7601

Corona: 1001 El Camino Ave. • Corona, CA 92879 • (866) 527-8471

Tyler: 11910 CR 492 • Tyler, Texas 75706 • (800) 527-8478

Dallas: 1201 Ave. S. Suite100 • Grande Prairie, TX 75050

Elmer: 701 Kenyon Ave. • Elmer, New Jersey 03318

New Lenox: 2200 West Haven • New Lenox, IL 60451

Portland: 15670 N. Lombard St. • Portland, OR 97203

Oxford: 1800 Greenbrier Dear Road • Anniston, AL 36207

*Fittings
to be lined
and coated
per
JP.
FBE,
P-401,
ETC.*

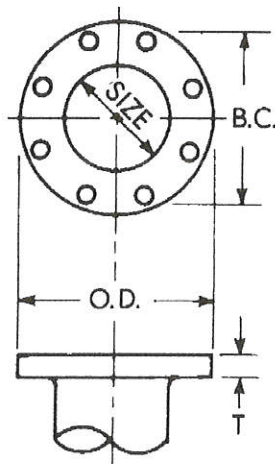
SUBMITTAL

(Current Revisions for All Standards Apply)

*Fittings
to be lined
& COATED
per JP-
FBE, P-40,
etc*

- SIZES:** 2" through 48"
- STANDARDS:** ANSI/AWWA C110/A21.10-08
Note: Cast with tested and traceable ASTM A536 Ductile Iron
- PRESSURE RATING:** 2"-48" rated @ 250 PSI
Note: With the use of special flange gasket 2"-24" flanged fittings can be rated @ 350 psi. For 350 psi flange joint applications, we recommend the use of annular ring type gasket or comparable.
- DEFLECTION:** Deflection is not recommended for flanged joint fittings due to the rigidity of the joint upon completion of installation.
- NSF-61:** Meets all requirements, UL Certified
- COATING:** ANSI/AWWA C104.A21.4-08 Bituminous and Tnemec 140N-1211
- CEMENT LINING:** ANSI/AWWA C104.A21.4-08
- EPOXY COATING:** ANSI/AWWA C116/A21.16-09
Note: Epoxy coated fittings are available to the specification(s) required for your application(s)
- BARE:** Available
- FLANGES:** ANSI Class 125 B16.1
Note: *ANSI Class 250 B16.1 flanged fittings available
Note: *Due to larger bolt sizing and bolt circle class 250 flanges are not compatible with class 125 flanged fittings.
- FLANGE THICKNESS:** ANSI/AWWA C151/A21.51-05; Standard Class 125 template for drilling bolt holes
Note: Drilling templates are in multiples of 4, so that fittings may be made to face in any quarter. Bolt holes shall straddle the center line.
- BOLTS:** ANSI/AWWA C111/A21.11-7
- INSTALLATION:** Per AWWA C600-99 using pipe conforming to ANSI/AWWA C151/A21.51-02

FLANGE DETAILS



Nominal Pipe Size Inch	Flange O.D.	Dia. of Bolt Circle	Flange Thickness T	Bolt Hole Diameter	Number of Holes	Bolt Dia. & Lengths
2	6	4.75	.62	.75	4	5/8x2 1/4
3	7.5	6	.75	.75	4	5/8x2 1/2
4	9	7.5	.94	.75	8	5/8x3
6	11	9.5	1.00	.875	8	3/4x3 1/2
8	13.5	11.75	1.12	.875	8	3/4x3 1/2
10	16	14.25	1.19	1.00	12	7/8x4
12	19	17	1.25	1.00	12	7/8x4
14	21	18.75	1.38	1.125	12	1x4 1/2
16	23.5	21.25	1.44	1.125	16	1x4 1/2
18	25	22.75	1.56	1.25	16	1 1/8x5
20	27.5	25	1.69	1.25	20	1 1/8x5
24	32	29.5	1.88	1.375	20	1 1/4x5 1/2
30	38.75	36	2.12	1.375	28	1 1/4x6 1/2
36	46	42.75	2.38	1.675	32	1 1/2x7
42	53	49.50	2.62	1.625	36	1 1/2x7 1/2
48	59.50	56.00	2.75	1.625	44	1 1/2x8



28U - ANSI/AWWA C110/A21.10
Class 125 Flange Joint Full Body
Ductile Iron Fittings
Revised 4/2018

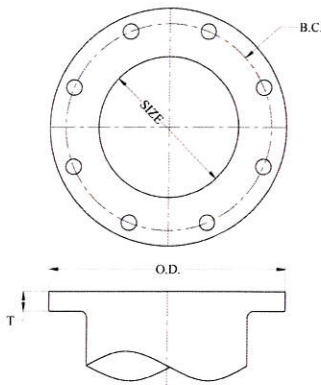
☐ DOMESTIC

☐ NON-DOMESTIC

SUBMITTAL: C110 FLANGE JOINT CLASS 125 PRODUCT

(Current revisions for the noted Standards apply)

SIZES:	2" - 64" (Contact Tyler Union for 54" - 64" flange fitting information)
STANDARDS:	ANSI/AWWA C110/A21.10, NFPA 13/24, ASME B16.1, 3" - 12" UL listed and FM approved
MATERIAL:	Cast of ASTM A536 qualified ductile iron. Date code is cast on and required for traceability.
PRESSURE RATING:	*Flanged fittings *2" - 48" rated at 250 psi. 54" - 64" rated at 150psi. *Note: With rubber annular ring flange gasket, 2" - 24" flanged fittings can be rated at 350 psi.
DEFLECTION:	Deflection is "not" recommended for flange joint due to the rigidity of the joint.
NSF-61 & NSF372:	Meets all requirements including Annex G, Tyler Union's Underwriters Laboratory listing MH16439.
COATING:	Asphaltic or Primer per ANSI/AWWA C104/A21.4, Standard primer is Tnemec Pota Pox N140-1211. Contact Tyler Union for additional coating options.
CEMENT LINING:	Per ANSI/AWWA C104/A21.4, with double cement lining available upon request.
EPOXY COATING:	Fusion bonded epoxy per ANSI/AWWA C116/A21.16. Additional coatings available upon request.
BARE FITTINGS:	Available upon request.
FLANGES:	ANSI Class 125 per ASME B16.1 and ANSI/AWWA C111/A21.11. Bolt holes shall straddle the center line NOTE: Class 125 ASME B16.1 are not compatible with Class 250 Flanges NOTE: Class 250 ASME B16.1 fittings are available upon request.
FASTNERS:	High strength low alloy weathering steel per ANSI/AWWA C111/A21.11 and ASTM A242
INSTALLATION:	Install per AWWA C600/C651 using pipe conforming to ANSI/AWWA C151/A21.51.



FLANGE DETAILS IN INCHES

BOLTS

Size Inches	Diameter DI Pipe	Flange O.D.	B.C. Diameter	Flange Thickness T	Bolt Hole Diameter	Size	Qty
2	2.51	6.00	4.75	0.62	0.750	5/8 x 2-1/4	4
3	3.96	7.50	6.00	0.75	0.750	5/8 x 2-1/4	4
4	4.80	9.00	7.50	0.94	0.750	5/8 x 3	8
6	6.90	11.00	9.50	1.00	0.875	3/4 x 3-1/2	8
8	9.05	13.50	11.75	1.12	0.875	3/4 x 3-1/2	8
10	11.10	16.00	14.25	1.19	1.000	7/8 x 4	12
12	13.20	19.00	17.00	1.25	1.000	7/8 x 4	12
14	15.30	21.00	18.75	1.38	1.125	1 x 4-1/2	12
16	17.40	23.50	21.25	1.44	1.125	1 x 4-1/2	16
18	19.50	25.00	22.75	1.56	1.250	1-1/8 x 5	16
20	21.60	27.50	25.00	1.69	1.250	1-1/8 x 5	20
24	25.80	32.00	29.50	1.88	1.375	1-1/4 x 5-1/2	20
30	32.00	38.75	36.00	2.12	1.375	1-1/4 x 5-1/2	28
36	38.30	46.00	42.75	2.38	1.625	1-1/2 x 7	32
42	44.50	53.00	49.50	2.62	1.625	1-1/2 x 7-1/2	36
48	50.80	59.50	56.00	2.75	1.625	1-1/2 x 8	44
54	Available on Request						
60	Available on Request						
64	Available on Request						

Anniston: 1501 W 17th St. • Anniston, AL 36201 • (800) 226-7601
Corona: 1001 El Camino Ave. • Corona, CA 92879 • (866) 527-8471
Tyler: 11910 CR 492 • Tyler, Texas 75706 • (800) 527-8478
Dallas: 1201 Ave. S. Suite100 • Grande Prairie, TX 75050

Elmer: 701 Kenyon Ave. • Elmer, New Jersey 03318
New Lenox: 2200 West Haven • New Lenox, IL 60451
Portland: 15670 N. Lombard St. • Portland, OR 97203
Oxford: 1800 Greenbrier Dear Road • Anniston, AL 36207

PROTECTO 401™ Ceramic Epoxy

STANDARD SPECIFICATION FOR LINING DUCTILE IRON PIPE FOR SEWER SERVICE

I. CONDITION OF DUCTILE IRON PRIOR TO SURFACE PREPARATION

All ductile pipe and fittings shall be delivered to the application facility without asphalt, cement lining, or any other lining on the interior surface. Because removal of old linings may not be possible, the intent of this specification is that the entire interior of the ductile iron pipe and fittings shall not have been lined with any substance prior to the application of the specified lining material and no coating shall have been applied to the first six inches of the exterior of the spigot ends.

II. LINING MATERIAL

The Standard of Quality is Protecto 401 Ceramic Epoxy. The material shall be an amine cured novalac epoxy containing at least 20% by volume of ceramic quartz pigment. Any request for substitution must be accompanied by a successful history of lining pipe and fittings for sewer service, a test report verifying the following properties, and a certification of the test results.

A. A permeability rating of 0.00 when tested according to Method A of ASTM E-96-66, Procedure A with a test duration of 30 days.

B. The following test must be run on coupons from factory lined ductile iron pipe:

- * ASTM B-117 Salt Spray (scribed panel) - Results to equal 0.0 undercutting after two years.
- * ASTM G-95 Cathodic Disbondment 1.5 volts @ 77°F. Results to equal no more than 0.5 mm undercutting after 30 days.
- * Immersion testing rated using ASTM D-714-87.
 - 20% Sulfuric acid—No effect after two years.
 - 140°F 25% Sodium Hydroxide—No effect after two years.
 - 160°F Distilled Water—No effect after two years.
 - 120°F Tap Water (scribed panel)—0.0 undercutting after two years with no effect.
- * ASTM G-22 90 Standard practice for determining resistance of Synthetic Polymeric materials to bacteria. The test should determine the resistance to growth of Acidithiobacillus Bacteria and should be conducted at 30 degrees centigrade for a period of 7 days on a minimum of 4 panels. The growth must be limited only to trace amounts of bacteria.

C. An abrasion resistance of no more than 3 mils (.075 mm) loss after one million cycles using European Standard EN 598: 1994 Section 7.8 Abrasion Resistance.

III. APPLICATION

Applicator

The lining shall be applied by a certified firm with a successful history of applying linings to the interior of ductile iron pipe and fittings.

Surface Preparation

Prior to abrasive blasting, the entire area to receive the protective compound shall be inspected for oil, grease, etc. Any areas with oil, grease, or any substance that can be removed by solvent, shall be solvent cleaned to remove those substances. After the surface has been made free of grease, oil or



Look Beneath the Surface.

other substances, all areas to receive the protective compounds shall be abrasive blasted using sand or grit abrasive media. The entire surface to be lined shall be struck with the blast media so that all rust, loose oxides, etc., are removed from the surface. Only slight stains and tightly adhering oxide may be left on the surface. Any area where rust reappears before lining must be reblasted.

Lining

After surface preparation and within 12 hours of surface preparation, the interior of the pipe shall receive 40 mils nominal dry film thickness of Protecto 401. No lining shall take place when the substrate or ambient temperature is below 40°F. The surface also must be dry and dust free. If flange pipe or fittings are included in the project, the lining shall not be used on the face of the flange.

Coating of Bell Sleeves and Spigot Ends

Due to the tolerances involved, the gasket area and spigot end up to 6 inches back from the end of the spigot end must be coated with 6 mils nominal, 10 mils maximum using Protecto 401 Joint Compound. The Joint Compound shall be applied by brush to ensure coverage. Care should be taken that the Joint Compound is smooth without excess buildup in the gasket seat or on the spigot ends. Coating of the gasket seat and spigot ends shall be done after the application of the lining.

Number of Coats

The number of coats of lining material applied shall be as recommended by the lining manufacturer. However, in no case shall this material be applied above the dry thickness per coat recommended by the lining manufacturer in printed literature. The maximum or minimum time between coats shall be that time recommended by the lining material manufacturer. To prevent delamination between coats, no material shall be used for lining which is not indefinitely recoatable with itself without roughening of the surface.

Touch-Up and Repair

Protecto 401 Joint Compound shall be used for touch-up or repair in accordance with manufacturer's recommendations.

IV. INSPECTION AND CERTIFICATION

Inspection

All ductile iron pipe and fitting linings shall be checked for thickness using a magnetic film thickness gauge. The thickness testing shall be done using the method outlined in SSPC PA-2 Film Thickness Rating.

The interior lining of all pipe barrels and fittings shall be tested for pinholes with a non-destructive 2,500 volt test. Any defects found shall be repaired prior to shipment.

Each pipe joint and fitting shall be marked with the date of application of the lining system along with its numerical sequence of application on that date and records maintained by the applicator of his work.

Certification

The pipe or fitting manufacturer must supply a certificate attesting to the fact that the applicator met the requirements of this specification, and that the material used was as specified.



Look Beneath the Surface.

V. HANDLING

Protecto 401 lined pipe and fittings must be handled only from the outside of the pipe and fittings. No forks, chains, straps, hooks, etc. shall be placed inside the pipe and fittings for lifting, positioning, or laying. The pipe shall not be dropped or unloaded by rolling.

Care should be taken not to let the pipe strike sharp objects while swinging or being off loaded. Ductile iron pipe should never be placed on grade by use of hydraulic pressure from an excavator bucket or by banging with heavy hammers.

☐ DOMESTIC

☐ NON-DOMESTIC

SUBMITTAL: PROTECTIVE FUSION BONDED EPOXY (FBE)

(Current revisions for all noted Standards apply)

Tyler Union Waterworks standard applied coating thickness for protective fusion bonded epoxy (FBE) is 6 to 8 mil and our FBE is NSF61, NSF-372 and Annex G approved. Tyler Union Waterworks FBE water works fittings are coated internally and externally in accordance with the applicable requirements of ANSI/AWWA C116/A21.16. Section 4.3.2 of the ANSI/AWWA C116 standard provides that FBE mil thickness in the joint area shall not have a coating of less than 4 mil. Additionally, the standard advises it may be necessary to establish a limit for the maximum applied thickness in the joint areas.

Tyler Union Waterworks upon request at time of order placement, can provide FBE fittings with increased mil thickness. However, FBE thickness greater than 6 to 8 mil may interfere with the pipe to fitting fit and inhibit the sealing for a leakproof joint. For these reasons, Tyler Union Waterworks does not provide warranty for FBE lined and coated fittings with greater than 8 mil thickness in the joint area.

Tyler Union Waterworks FBE is tested and approved per Underwriters Laboratories UL262. Testing of FBE involves immersing coated parts in four aqueous solutions at 158°F and evaluate for blistering during 90 day continuous exposure period. The solutions are distilled water, 2% sodium chloride in distilled water, distilled water with a pH adjusted to 4.0 using potassium hydrogen phthalate, and distilled water with pH adjusted to 10.0 using sodium carbonate. Tyler Union Waterworks FBE is also tested for blister resistance when immersed in acid, alkali, alcohol, and hydrocarbons at room temperature over 90 days. Additional test data and recommended exposures for Tyler Union Waterworks FBE is as provided in Tables 1 thru 3.

The ANSI/AWWA C116/A21.16 standard describes the use of protective fusion bonded epoxy coatings as being utilized for the interior and exterior surfaces of ductile or gray iron fittings supplied for "water systems". Section 1.1 of the standard specifically provides that the standard does not cover instances where coatings are agreed upon by purchaser and manufacturer for sewer or other special applications. Though not always recommended for use in **Sewer systems; FBE coated and lined fittings may be used in sewer applications conveying materials conforming to the properties as provided in Tables 2 and 3 on page 2.

TABLE #1			
TEST	METHOD	CONDITIONS	RESULT
Abrasion Resistance	ASTM D4060	CS-17 wheels, 1000 cycles, 1 kg load	32 mg loss
Adhesion	ASTM D3359 - Method A	X-cut and tape	5A
Adhesion	ASTM D3359 - Method B	Crosshatch and tape	5B
Gloss, 60°	ASTM D523	N/A	70-85
Humidity Resistance	ASTM D2247	1000 hours at 100°F	No blisters or rusting
Impact	ASTM D2794	N/A	Pass 40 inch-lbs. direct
Pencil hardness	ASTM D3363	N/A	Pass 4H
Salt Spray	ASTM B117	1000 hours	No blisters or face rust, no scoreline creepage
Water Resistance	AWWA C550	90 days immersion at 70°C	Pass
Weather Resistance	ASTM G154	UVA-340, cycle 4 hrs UV at 60°C, 4 hrs condensation at 50°C	Chalks after 200 hours exposure

☐ DOMESTIC

☐ NON-DOMESTIC

SUBMITTAL: PROTECTIVE FUSION BONDED EPOXY (FBE)

(Current revisions for noted Standards apply)

TABLE #2	
Immersion Environments with the following chemicals (ambient temperature)	
Aliphatic Hydrocarbons	Fresh water
Calcium Chloride (10% solution)	Fuel Oil
Calcium Hydroxide (10% solution)	Hexane
Calcium Sulfate (saturated solution)	Kerosine
Calcium Carbonate (saturated solution)	Motor oil
Distilled water	Magnesium Sulfate (saturated solution)
Gasoline (unleaded)	Potassium Acetate (saturated solution)
Diesel Fuel	Soap solutions
Sodium Chloride (5% solution)	Sodium Nitrate (10% solution)
Sodium Hydroxide (5% solution)	Trisodium Phosphate (5% solution)

TABLE #3	
Splash and Spillage Environments against the following chemicals	
Aromatic Hydrocarbons	Butanol
Ethanol	Hydrochloric Acid (5% solution)
Isopropyl Alcohol	Methanol
Sulfuric Acid (5% solution)	Toluene
Xylene	

***NOTE:**

Due to the prescribed application methods of protective fusion bonded epoxy and the combination of varying fitting diameters, recesses, raised lettering, tapping bosses, and numerous radiused surfaces; the applied thickness of the FBE coating or lining may vary 1 to 2 mils over the coated surfaces of a fitting.

****NOTE:**

Final determination of the suitability of this product for your application shall be determined by the end user .

Additional types of epoxy coatings are available upon request at time of order placement. Please contact a Tyler Union Waterworks Customer Service representative to discuss the additional coating and lining options that are available.