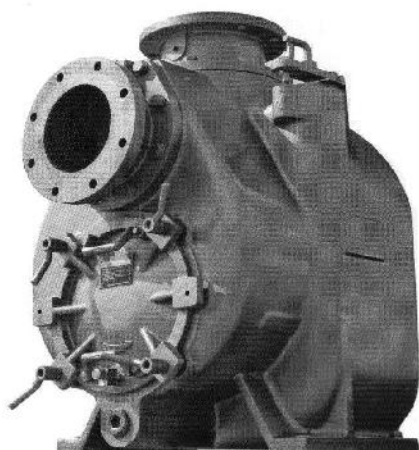


PFSP-4X



Removable Rotating Assembly



Self-aligning, oil lubricated,
Mechanical seal with Silicon
Carbide Rotating face and
Tungsten Stationary.

Performance Range

Max. capacity	720 GPM
Max. head	120 ft
Max. temp.	160 °F (71 °C)
Max. solids (in)	3"
Max. operating pressure	90 psi
RPM range	650-1950

Materials of Construction

Main casing	A48CL30
Impeller	A60-40-18
Wear plate	SAE1020
Cover plate	A48CL30
Bearing housing	A48CL30
Seal plate	A48CL30
Flapper valve	Neoprene
Shaft	ANSI 17-4

Mechanical seal

- Oil-Lubricated double floating
- Casing and spring SS316
- O-rings in Buna & Viton,
- Faces in Silicon Carbide and Tungsten Carbide

Inlet/outlet flanges	A48CL30
Gaskets	Buna

Applications

- Municipal, industrial.
- Waste treatment (scum pits, lift stations digester recirculation, slurry).
- General industrial water and wastewater transfer.
- Pulp and paper (wood yard and processing plant sumps, chip and light pulp handling).
- Food Processing & rendering (fruit & vegetable waste, beef, poultry and seafood waste parts, flushings, hide, light fat).

Benefits

- Direct replacement with no piping changes for most brands.
- Solids handling up to 3".
- Easy inspection and clean out.
- Convenient back pull out design.
- Dual oil lip seals to fully separate the oil chamber from the seal chamber. Creates a void between the two chambers not allowing water to enter the bearing chamber due to a seal failure.