

DATE: 9/20/2018

INVITATION TO BID  
THIS IS NOT AN ORDER

Page: 4

BID NO.: 50-00124303

**JEFFERSON PARISH**

PURCHASING DEPARTMENT  
P.O. BOX 9  
GRETN, LA. 70054-0009  
504-364-2678

VENDOR:

BUYER: SFOLSE

As per LSA-RS 47:301 et seq., all governmental bodies are excluded from payment of sales taxes to any Louisiana taxing body. Quotations shall be based on F.O.B. Agency warehouse or jobsite, anywhere within the Parish as designated by the Purchasing Department.

JEFFERSON PARISH reserves the right to cancel all or any part of an order if not shipped promptly. No charges will be allowed for parking or cartage unless specified in quotation. The order must not be filled at a higher price than quoted. JEFFERSON PARISH reserves the right to cancel at any time and for any reason by issuing a THIRTY (30) day written notice to the contractor.

JEFFERSON PARISH is expecting all products to be new and all work to be done in workman-like manner, according to standard practices. Any deviations or alteration from the specifications must be indicated on the bid form for each item and upon request, product data for same must be submitted by the time specified by the Purchasing Department.

**DELIVERY: FOB JEFFERSON PARISH**

INDICATE DELIVERY DATE ON EQUIPMENT AND SUPPLIES

11-15 days

INDICATE STARTING TIME (IN DAYS) FOR CONSTRUCTION WORK

INDICATE COMPLETION TIME (IN DAYS) FOR CONSTRUCTION WORK

In the event that addenda are issued with this bid, bidders MUST acknowledge all addenda on the bid form. Bidder must acknowledge receipt of an addendum on the bid form as indicated. Failure to acknowledge any addendum on the bid form will result in bid rejection.

Acknowledge Receipt of Addenda: NUMBER: \_\_\_\_\_

NUMBER: \_\_\_\_\_

NUMBER: \_\_\_\_\_

NUMBER: \_\_\_\_\_

LOUISIANA CONTRACTOR'S LICENSE NO.: (if applicable) \_\_\_\_\_

*** ALL BIDDERS MUST COMPLETE SECTION BELOW ***	
FIRM NAME: <u>Cimsco</u>	
SIGNATURE: (Must be signed here) <u>Jeff Deviller</u>	TITLE: <u>SALES</u>
PRINT OR TYPE NAME: <u>Jeff Deviller</u>	
ADDRESS: <u>1840 L &amp; A Rd.</u>	
CITY, STATE: <u>Metairie, LA</u>	ZIP: <u>70001</u>
TELEPHONE: <u>(504) 835-7319</u>	FAX: <u>(504) 832-0820</u>
EMAIL ADDRESS: <u>JEFF@CIMS.CO.LO</u>	

TOTAL PRICE OF ALL BID ITEMS: \$ 21063-

## INVITATION TO BID FROM JEFFERSON PARISH - continued

BID NO.: 50-00124303

SEALED BID

ITEM NUMBER	QUANTITY	U/M	DESCRIPTION OF ARTICLES	UNIT PRICE QUOTED	TOTALS
1	4.00	EA	VALVES FOR THE JEFFERSON PARISH EASTBANK DEPARTMENT OF SEWERAGE		
			0001 - Valve, check, 12 inch, 27-1/2 inch face to face, flanged lever and weight, IBBM bronze disc facing, epoxy coat, stainless steel bolts/nuts, domestic, <del>M &amp; H no. 159-02</del> <i>KENNEDY 11062W</i> (0621760)	<i>3849<sup>-</sup></i>	<i>15396<sup>-</sup></i>
2	3.00	EA	0002 - Valve, plug, 12 inch, 14 inch face to face, flanged, eccentric, cast iron body, solid ductile iron plug with nitrile elastomer coating, 100 percent port, nickel seat, <del>Pratt no. 1200 604N1A CHW</del> (0625050) <i>KENNEDY</i>	<i>1889<sup>-</sup></i>	<i>5667<sup>-</sup></i>

# Kennedy Swing Check Valves

A.W.W.A. C508 was developed in 1976 to set a standard for the manufacture, testing and application of Iron Body Bronze Mounted (IBBM) Check Valves. The valves are designed with an iron body and include either metal-to-metal or composition-to-metal seating.

Kennedy Swing Check Valves are designed and manufactured in conformance with A.W.W.A. C508 and are for use on water, oil and gas lines. Under certain circumstances where it is desirable to have more positive control of the closing of the disc, the valves can be supplied with either lever-and-spring or lever-and-weight. For restricted spacing requirements Kennedy Valve manufactures a Wafer Check Valve that also helps to control water hammer.

## Features



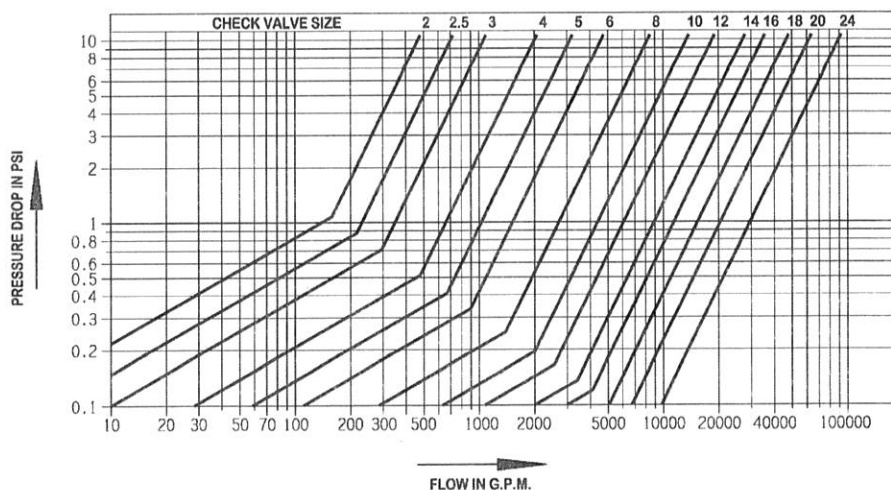
### Swing Check Valve-AWWA

- Stainless steel hinge pin.
- Working parts are removable through the top of the valve.
- Tapped bosses available.
- Available with lever-and-spring or lever-and-weight.
- Double bronze side plug construction.
- Bodies are made of high strength cast iron with reinforced flanges - ANSI B 16.1/125 # flanges.
- May be installed in a vertical line with the flow up.

• Figure #1106 Series	2"-12"
Test Pressure - Seat and Shell	400 PSI
Working Pressure - non-shock CWP	200 PSI
• Figure #1106 Series	14"-24"
Test Pressure - Seat and Shell	300 PSI
Working Pressure - non-shock CWP	150 PSI

### FLOW VERSUS PRESSURE DROP

Data Representative of Kennedy Figure 1106 and 1106A Swing Check Valves



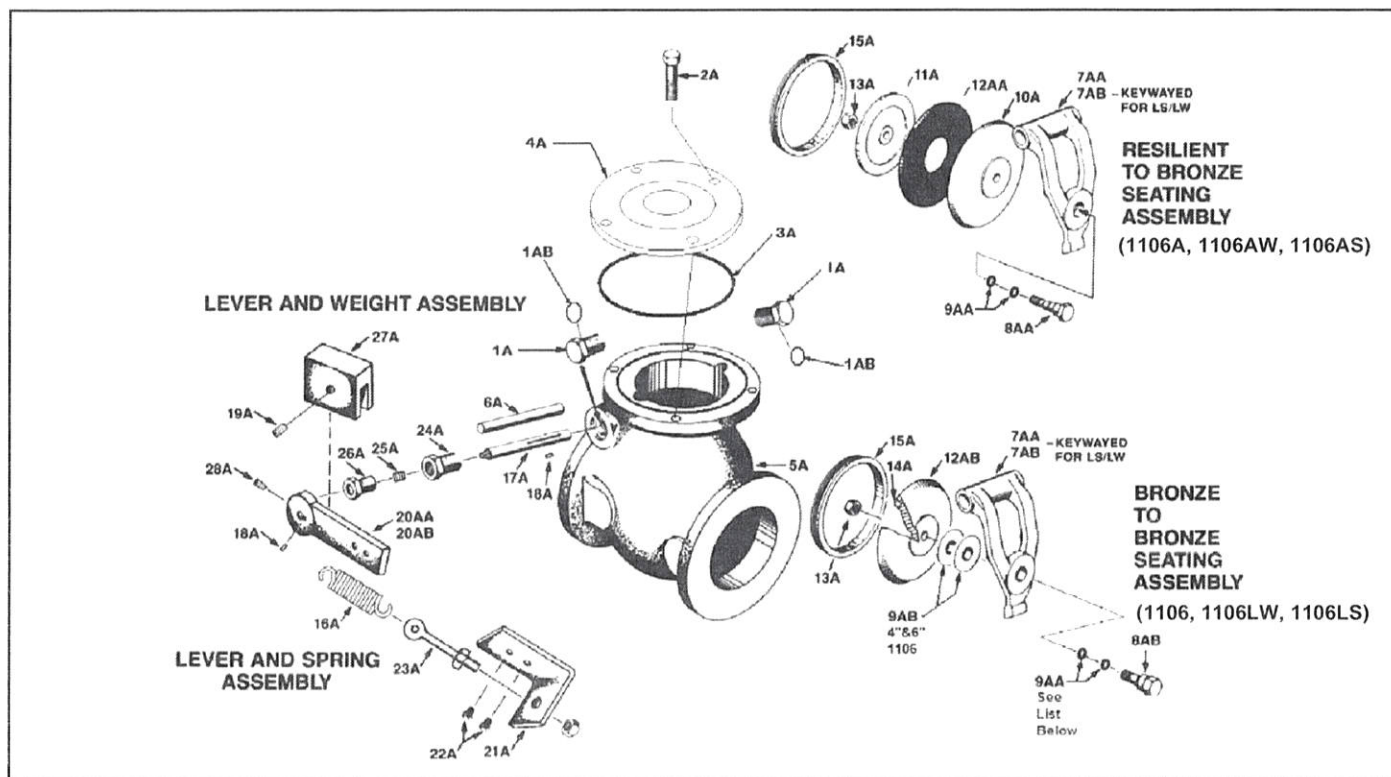


## SWING CHECK VALVES 2"-12" TECHNICAL DATA & PARTS LIST

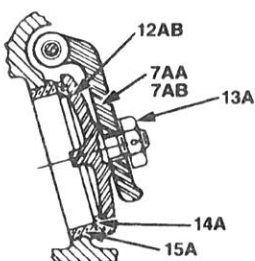
KENNEDY VALVE

Resilient/Bronze - Figure # 1106A, 1106AW, 1106AS

Bronze/Bronze - Figure # 1106, 1106LW, 1106LS



### Disc Arrangement 2"-3"



BRONZE  
DISC

RESILIENT  
DISC

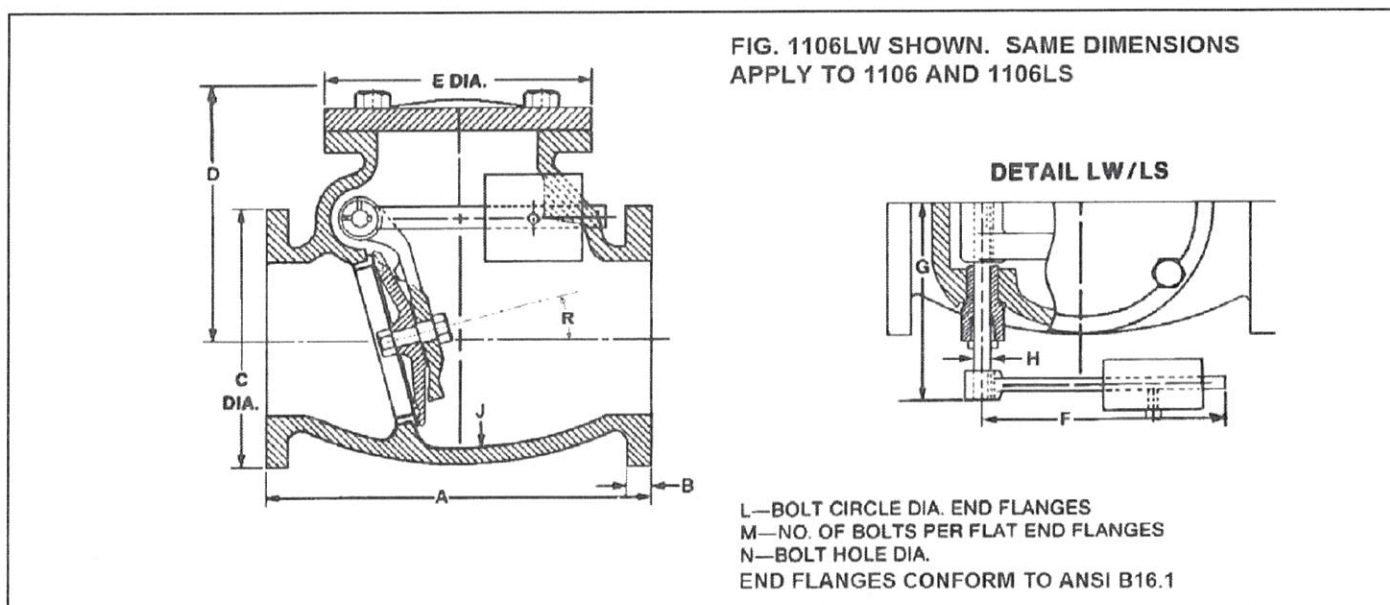
Part No.	Qty.	Description	Material & ASTM Spec.
1A With	2	Side Plug With O-Ring	Bronze
1AB (O-Ring)	1 for LS/LW		
2A	* SEE FOOT NOTE	Cap Bolts	Stainless Steel, ASTM F593C (18-8)
3A	1	O-Ring	Syn. Rubber
4A	1	Cap	Cast Iron, ASTM A126 Class B
5A	1	Body	Cast Iron, ASTM A126 Class B
6A	1	Hinge Pin	SS A-276 (304)
7AA	1	Hinge	Bronze (2"-3") D.I. A-536 (4"-12")
7AB	1	Hinge w/keyway for LS/LW	Bronze (2"-3") Ductile Iron ASTM A536 (4"-12")
8AA	1	Disc Bolt (4"-12")	Bronze (4"-12")
8AB	1	Disc Bolt (4"-12")	Bronze (10"-12") Steel (4"-8")
9AA	2	Disc Bolt O-Ring (4"-12" 1106A, 8"-12" 1106)	Syn. Rubber
9AB	2	Disc Bolt Gasket (4" & 8" 1106)	
10A	1	Disc Holder	Bronze (2"-3") *** Cast Iron, ASTM A126 Class B (4"-12")
11A	1	Disc Plate	Bronze
12AA	1	Disc	Nitrile (Buna N) Rubber
12AB**	1	Disc	Bronze (2"-3") *** Cast Iron, ASTM A126 Class B (4"-12")
13A	1	Disc Nut	Stainless Steel, ASTM F593C (18-8)
14A**	1	Disc Ring (4"-12") --- (2"-3")***	Bronze
15A	1	Seat Ring	Bronze
16A	1	Spring	Steel
17A	1	Extended Hinge Pin for LS/LW	Stainless Steel, ASTM A-276 (304)
18A	2	Key for LS/LW	Stainless Steel, ASTM A-276 (304)
19A	1	Set Screw	Steel
20AA	1	Lever Arm for LS	Steel
20AB	1	Lever Arm for LW	Steel
21A	1	Bracket	Steel
22A	2	Hex Head Bracket Bolt	Steel
23A	1	Eye Bolt w/2 Hex Nuts	Steel
24A	1	Stuffing Box	Bronze
25A	-	Packing	Graphite Filled
26A	1	Gland	Bronze
27A	1	Weight	Cast Iron, ASTM A126 Class B
28A	1	Set Screw	Steel

\* Qty of cover bolts, 2"-8" = 4 bolts, 10"-12" = 6 bolts.

\*\* Denotes that part is available only as part of an assembly.

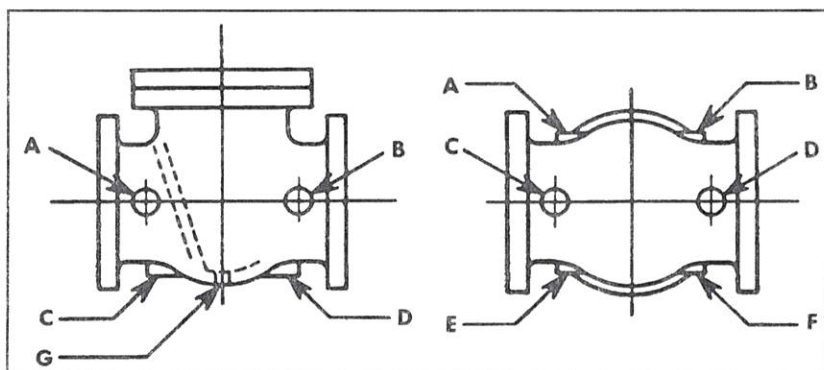
\*\*\*Cast integral (2"-3").

# Dimensional Data 2"-12" 1106/1106LW/106LS



SIZE	*A		B		C		D		E		F		G		H		J		L		M		N		R	
	inch	mm	inch	mm	inch	mm	inch	mm	inch	mm	inch	mm	inch	mm	inch	mm	inch	mm	inch	mm	inch	mm	inch	mm	inch	mm
2"	8.00	203	0.65	17	6.00	152	6.00	152	6.56	167	6.50	165	4.72	120	0.50	13	0.34	9	4.75	121	4	102	0.75	19	10.00	254
2 1/2"	8.50	216	0.69	18	7.00	178	6.44	164	6.56	167	6.50	165	4.94	125	0.50	13	0.41	10	5.50	140	4	102	0.75	19	8.00	203
3"	9.50	241	0.78	20	7.50	191	6.85	174	6.56	167	6.50	165	5.34	136	0.50	13	0.44	11	6.00	152	4	102	0.75	19	8.00	203
4"	11.50	292	1.00	25	9.00	229	8.69	221	9.00	229	7.75	197	8.19	208	0.62	16	0.41	10	7.50	191	8	203	0.75	19	12.00	305
6"	14.00	356	1.03	26	11.00	279	10.51	267	11.00	279	9.75	248	9.00	229	0.75	19	0.43	11	9.50	241	8	203	0.87	22	15.00	381
8"	19.50	495	1.25	32	13.50	343	12.56	319	13.50	343	14.13	359	10.18	259	0.87	22	0.75	19	11.75	298	8	203	0.87	22	15.00	381
10"	24.50	622	1.31	33	16.00	406	14.07	357	16.75	425	18.00	457	11.62	295	1.00	25	0.81	21	14.25	362	12	305	1.00	25	15.00	381
12"	27.50	699	1.38	35	19.00	483	16.13	410	19.00	483	18.00	457	13.75	349	1.00	25	0.87	22	17.00	432	12	305	1.00	25	15.00	381

BODY MARKINGS	
(ONE SIDE) A.W.W.A. KENNEDY	(OPPOSITE SIDE) FIG. NO. 200 W
CAP MARKINGS	
YEAR KENNEDY SIZE	



## BOSS AND DRAIN TAPPING SCHEDULE

VALVE SIZE (In.)	2-3 1/2	4-5	6	8,10,12
MAX. SIZE PIPE TAP (NPT)	3/4	1	1 1/4	2

When ordering Check Valves tapped for by-pass or drain, specify exact location and size of tap using letters above for boss designation. These locations of drain and by-pass tapings conform to the Manufacturers Standardization Society (MSS SP-45 current edition).



ITEM#	PART NAME	ASTM/ DESIGNATION	QTY.
1	LOWER SLEEVE BEARING	SINTERED ALLOY SS316	11
2	LOWER GRIT SEAL	NBR	1
3	LOWER THRUST WASHER	PTFE	1
4	PLUG	ASTM A536 GR. 65-45-12 or GR. 75-50-05 +NBR	1
5	BODY	ASTM A536 GR. 65-45-12 or 70-50-05	1
6	UPPER THRUST WASHER	PTFE	1
7	UPPER GRIT SEAL	NBR	1
8	UPPER SLEEVE BEARING	SINTERED ALLOY SS316	1
9	V-PACKING	NBR	1
10	FOLLOWER GLAND	ASTM A536 GR. 65-45-12 or 70-50-05	1
11	HEX NUTS	STAINLESS STEEL ASTM A276/304/316*	2
12	STUDS	STAINLESS STEEL ASTM A276/304/316*	2
13	ADAPTER	ASTM A536 GR. 65-45-12 or 70-50-05	1
14	ADAPTER BOLTS	STAINLESS STEEL ASTM A276/304/316*	6
15	COVER BOLTS	STAINLESS STEEL ASTM A276/304/316*	4
16	COVER	ASTM A536 GR. 65-45-12 or 70-50-05	1
17	COVER O-RING	NBR	1
18	JPM GEAR w/ HW	ASTM A29 1566	1
19	SLOT TYPE SPRING PIN	ASTM A29 1566	1

WATER WORKING PRESSURE PSI

3-12	175 PSI	350 PSI
14-16	150 PSI	300 PSI

SIZE RANGE

HYDROSTATIC TEST PSI

SEAT

8 INCH SHOWN

SECTION A-A SCALE 1:2.5

NOTE: 1. FASTENERS ARE 304SS STANDARD OR 316SS PER CUSTOMER REQUEST 2. CASTING MARKINGS INCLUDE "CLOW"

REVISIONS

DATE	DESCRIPTION	DATE	APPROVED
3/29/2017	RELEASED	3/29/2017	J. CARPER
4/20/2017	REVISED	4/20/2017	J. CARPER
7/26/2017	CORRECTED MODEL COLOR	7/26/2017	J. CARPER
7/26/2017	CORRECTED COVER COLOR	7/26/2017	J. CARPER
7/26/2017	CORRECTED COVER SEAL LETTERING	7/26/2017	J. CARPER

NAME DATE

DATE

DESCRIPTION

DATE

APPROVED

DATE

APPROVED

DATE

APPROVED

DATE

APPROVED

DATE

APPROVED

DATE

APPROVED

DATE

APPROVED

DATE

APPROVED

DATE

APPROVED

DATE

APPROVED

DATE

APPROVED

DATE

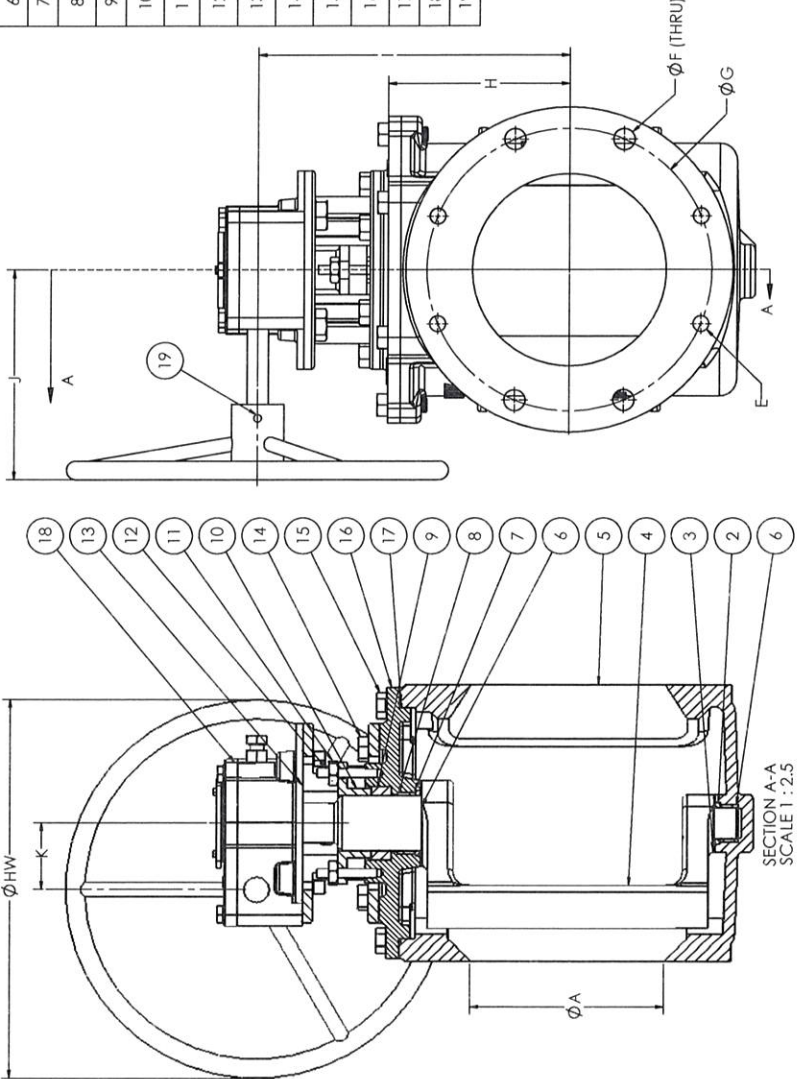
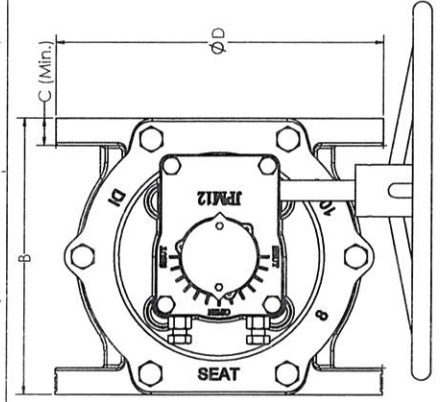
APPROVED

DATE

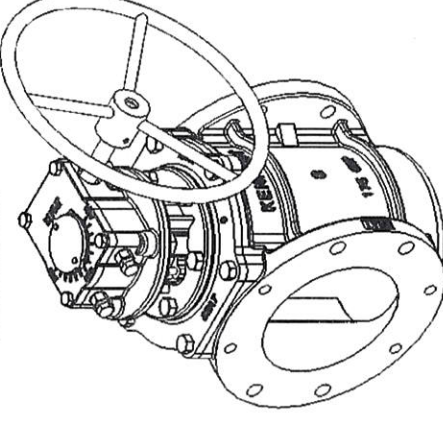
APPROVED

DATE

APPROVED



8 INCH SHOWN



A (VALVE SIZE)	B	C	D	E	F	G	H	I	J	K	WEIGHT (LBS.)	JPM GEAR	Ø HW (in)
3	8.00	.75	7.50	4 x 5/8-11 $\nabla$ 79	-	6.00	3.76	7.50	8.8	2.8	75 LBS	JPM12A	8
4	9.00	.94	9.00	4 x 5/8-11 $\nabla$ 79	4 x .75	7.50	4.65	8.28	8.8	2.8	100 LBS	JPM12A	8
6	10.50	1.02	11.00	4 x 3/4-10 $\nabla$ 79	4 x .81	9.50	5.78	10.30	8.8	2.8	165 LBS	JPM12FA	12
8	11.50	1.13	13.50	4 x 3/4-10 $\nabla$ 79	4 x .88	11.75	7.48	12.54	8.8	2.8	230 LBS	JPM12FA	16
10	13.00	1.19	16.00	8 x 7/8-9 $\nabla$ 79	4 x 1.00	14.25	8.88	14.02	11.3	3.9	340 LBS	JPM14A	20
12	14.00	1.26	19.00	8 x 7/8-9 $\nabla$ 79	4 x 1.00	17.00	11.00	16.38	12.1	3.9	480 LBS	JPM14A	24
14	17.00	1.38	21.00	8 x 1-8 UNS $\nabla$ 1.54	4 x 1.13	18.75	12.88	18.00	14.9	4.9	720 LBS	JPM15A	24
16	17.17	1.44	23.50	8 x 1-8 UNS $\nabla$ 1.06	8 x 1.13	21.25	14.69	22.50	14.9	4.9	850 LBS	JPM15A	30



KENNEDY VALVE

On the order of Kennedy Valve, Inc.

3-1/2" FULL FLOW F.I.G. EPV

6412FF w/ JPM GEAR - HW

SEE TABLE

REV 5

SUB910399T

D

REV 5

SHEET 1 OF 1