



**Bid Number 50 - 00125051**

**Furnish and Install One (1) Walk Through, Multi-Zone Metal Detector at  
the Jefferson Parish Second Parish Court**

**December 19, 2018 at 11:00 am**

**ATTENTION VENDORS!!!**

**Please review all pages and respond accordingly, complying with all provisions  
in the technical specifications and Jefferson Parish Instructions for Bidders and  
General Terms and Conditions. All bids must be received in the Purchasing  
Department by the bid due date and time.**

**Jefferson Parish Purchasing Department  
200 Derbigny Street  
General Government Building, Suite 4400  
Gretna, LA 70053**

**Buyer Name: Doris Abraham, Buyer I  
Buyer Email: [dabraham@jeffparish.net](mailto:dabraham@jeffparish.net)  
Buyer Phone: 504-364-2690**

DATE: 12/13/2018

INVITATION TO BID  
THIS IS NOT AN ORDER

Page: 1

BID NO.: 50-00125051

**JEFFERSON PARISH**

PURCHASING DEPARTMENT  
P.O. BOX 9  
GRETN, LA. 70054-0009  
504-364-2678

VENDOR:

BUYER: DABRAHAM@jeffparish.net

Bids will be received until 11:00 AM, 12/19/2018 via online at [www.jeffparishbids.net](http://www.jeffparishbids.net) or by hand delivery, USPS mail or other courier service to Purchasing Department, 200 Derbigny Street (General Government Building), Suite 4400, Gretna, LA 70053. For convenience, bidders may also submit bids in the East Bank Purchasing Department, Suite 404, Jefferson Parish Joseph S. Yenni Building, 1221 Elmwood Park Blvd., Jefferson LA 70123. However, if submitting bids on the day of bid opening, bidders must submit at the West Bank location only.

All bids submitted are subject to these instructions and general conditions and any special conditions and specifications contained herein, all of which are made part of this bid proposal reference. By submitting a bid, vendor agrees to comply with all provisions of Louisiana Law, as well be in compliance with the Jefferson Parish Code of Ordinances, Louisiana Code of Ethics, applicable Jefferson Parish ethical standards and Jefferson Parish Resolution No. 113646 and/or Resolution No. 113647. A copy of these resolutions may be obtained from the Office of the Parish Clerk, Suite 6700, Jefferson Parish General Government Building, 200 Derbigny Street, Gretna, LA 70053. You may also obtain a copy by visiting the Purchasing Department webpage at [purchasing.jeffparish.net](http://purchasing.jeffparish.net) and clicking on On-line forms.

All vendors submitting bids should register as a Jefferson Parish vendor if not already yet registered. Registration forms may be downloaded from <http://purchasing.jeffparish.net> and by clicking on Vendor Information. Current W-9 forms with respective Tax Identification numbers and vendor applications may be submitted at any time; however, if your company is not registered and/or a current W-9 form is not on file, vendor registration is mandatory. Further, a current W-9 form and respective Tax Identification number must be supplied upon contract execution, should you be awarded a contract and/or issued purchase order. Failure to do so may result in delay of payment.

As per LSA-RS 47:301 et seq., all governmental bodies are excluded from payment of sales taxes to any Louisiana taxing body. Quotations shall be based on F.O.B. Delivered, anywhere within the Parish as designated by the Purchasing Department. JEFFERSON PARISH WILL ACCEPT ONE BID ONLY FROM EACH VENDOR. Items bid must meet specifications. JEFFERSON PARISH will accept one price for each item unless otherwise indicated. Two or more prices for one item will result in bid rejection. Bidders are required to complete, sign and return the bid form and/or complete and return the associated line item pricing forms as indicated. The price quoted for work shall be stated in figures. In the event there is a difference in unit prices and totals, the unit prices shall prevail.

JEFFERSON PARISH reserves the right to award contracts or place orders on a lump sum or individual item basis, or such combination, as shall in its judgment be in the best interest of JEFFERSON PARISH. Every contract or order shall be awarded to the LOWEST RESPONSIVE and RESPONSIBLE BIDDER, taking into consideration the CONFORMITY WITH THE SPECIFICATIONS and the DELIVERY AND/OR COMPLETION DATE

PROTESTS: Only those vendors that submitted a bid in response to this solicitation may submit a protest in writing to the Director of the Purchasing within 48 hours of bid opening. The Purchasing Director will review it in connection with the Parish Attorney's Office as appropriate and a written response will be provided as soon as possible.

JEFFERSON PARISH reserves the right to cancel all or any part of an order if not shipped promptly. No charges will be allowed for parking or cartage unless specified in the quotation. The order must not be filled at a higher price than quoted. JEFFERSON PARISH reserves the right to cancel at any time and for any reason by issuing a THIRTY (30) day written notice to the contractor.

JEFFERSON PARISH requires all products to be new (current) and all work must be performed according to standard practices for the project. Unless otherwise specified, no aftermarket parts will be accepted. Unless otherwise specified, all workmanship and materials must have at least one (1) year warranty, in writing, from the date of delivery and/or acceptance of the project. Any deviations or alteration from the specifications must be indicated on the bid form for each item and upon request, product data for same must be submitted by the time specified by the Purchasing Department.

If this bid requires a pre-bid conference (see Additional Requirements section), bidders are advised that such conference will be held to allow bidders the opportunity to identify any discrepancies in the bid specifications and seek further clarification regarding instructions. The Purchasing Department will issue a written response to bidders' questions in the form of an Addendum.

All formal Addenda require written acknowledgment on the bid form by the bidder. Failure to acknowledge an Addendum on the bid form shall cause the bid to be rejected; JEFFERSON PARISH reserves the right to award bid to next lowest responsive and responsible bidder in this event.

USE OF BRAND NAMES AND STOCK NUMBERS: Where brand names and stock numbers are specified, it is for the purpose of establishing certain minimum standards of quality. Bids may be submitted for products of equal quality, provided brand names and stock numbers are specified. Complete product data may be required prior to award.

Quantities listed are for bidding purposes only. Actual requirements may be more or less than quantities listed.

Bidders are not to exclude from participation in, deny the benefits of, or subject to discrimination under any program or activity, any person in the United States on the grounds of race, color, national origin, or sex; nor discriminate on the basis of age under the Age Discrimination Act of 1975, or with respect to an otherwise qualified handicapped individual as provided in Section 504 of the Rehabilitation Act of 1973, or on the basis of religion, except that any exemption from such prohibition against discrimination on the basis of religion as provided in the Civil Rights Act of 1964, or Title VI and VII of the Act of April 11, 1968, shall also apply. This assurance includes compliance with the administrative requirements of the Revenue Sharing final handicapped discrimination provisions contained in Section 51.55 (c), (d), (e), and (k)(5) of the Regulations. New construction or renovation projects must comply with Section 504 of the 1973 Rehabilitation Act, as amended, in accordance with the American National Standard Institute's specifications (ANSI A117.1-1961).

Jefferson Parish and its partners as the recipients of federal funds are fully committed to awarding a contract(s) to firm(s) that will provide high quality services and that are dedicated to diversity and to containing costs. Thus, Jefferson Parish strongly encourages the involvement of minority and/or woman-owned business enterprises (DBE's, including MBE's, WBE's and SBE's) to stimulate participation in procurement and assistance programs.



## INSTRUCTIONS FOR BIDDERS AND GENERAL CONDITIONS

### IN ACCORDANCE WITH STATE REGULATIONS JEFFERSON PARISH OFFERS ELECTRONIC PROCUREMENT TO ALL VENDORS

This electronic procurement system allows vendors the convenience of reviewing and submitting bids online. This is a secure site and authorized personnel have limited read access only. Bidders are encouraged to submit electronically using this free service; while the website accepts various file types, one single PDF file containing all appropriate and required bid documents is preferred. Bidders submitting uploaded images of bid responses are solely responsible for clarity. If uploaded images/documents are not legible, then bidder's submission will be rejected. Please note all requirements contained in this bid package for electronic bid submission.

Please visit our E-Procurement Page at [www.jeffparishbids.net](http://www.jeffparishbids.net) to register and view Jefferson Parish solicitations. For more information, please visit the Purchasing Department page at <http://purchasing.jeffparish.net>.

## ADDITIONAL REQUIREMENTS FOR THIS BID

PLEASE MATCH THE NUMBERS PRINTED IN THIS BOX WITH THE CORRESPONDING INSTRUCTIONS BELOW.

3, 5, 6, 10, 13

1. All bidders must attend the MANDATORY pre-bid conference and will be required to sign in and out as evidence of attendance. In accordance with LSA R.S. 38:2212(I), all prospective bidders shall be present at the beginning of the MANDATORY pre-bid conference and shall remain in attendance for the duration of the conference. Any prospective bidder who fails to attend the conference or remain for the duration shall be prohibited from submitting a bid for the project.
2. Attendance to this pre-bid conference is optional. However, failure to attend the pre-bid conference shall not relieve the bidder of responsibility for information discussed at the conference. Furthermore, failure to attend the pre-bid conference and inspection does not relieve the successful bidder from the necessity of furnishing materials or performing any work that may be required to complete the work in accordance with the specification with no additional cost to the owner.
3. Contractor must hold current applicable JEFFERSON PARISH licenses with the Department of Inspection and Code Enforcement. Contractor shall obtain any and all permits required by the JEFFERSON PARISH Department of Inspection and Code Enforcement. The contractor shall be responsible for the payment of these permits. All permits must be obtained prior to the start of the project. Contractor must also hold any and all applicable Federal and State licenses. Contractor shall be responsible for the payment of these permits and shall obtain them prior to the start of the project.
4. A LA State Contractor's License will be required in accordance with LSA R.S. 37-2150 et. seq. and such license number will be shown on the outside of the bid envelope. Failure to comply will cause the bid to be rejected. Additionally if submitting the bid electronically, then the license number must be entered in the appropriate field in the Electronic Procurement system. Failure to comply will cause the bid to be rejected.
5. It is the bidder's responsibility to visit the job site and evaluate the job before submitting a bid.
6. Job site must be clean and free of all litter and debris daily and upon completion of the contract. Passageways must be kept clean and free of material, equipment, and debris at all times. Flammable material must be removed from the job site daily because storage will not be permitted on the premises. Precautions must be exercised at all times to safeguard the welfare of JEFFERSON PARISH and the general public.



**INSTRUCTIONS FOR BIDDERS AND GENERAL CONDITIONS**

7. **PUBLIC WORKS BIDS:** All awards for public works in excess of \$5,000.00 will be reduced to a formal contract which shall be recorded at the contractor's expense with the Clerk of Court and Ex-Officio Recorder of Mortgages for the Parish of Jefferson. A price list of recordation costs may be obtained from the Clerk of Court and Ex-Officio Recorder of Mortgages for the Parish of Jefferson. All awards in excess of \$25,000.00 will require both a performance and a payment bond. Unless otherwise stated in the bid specifications, the performance bond requirements shall be 100% of the contract price. Unless otherwise state in the bid specifications, the payment bond requirements shall be 100% of the contract price. Both bonds shall be supplied at the signing of the contract.
8. **NON-PUBLIC WORKS BIDS:** A performance bond will be required for this bid. The amount of the bond will be 100% of the contract price unless otherwise indicated in the specifications. The performance bond shall be supplied at the signing of the contract.
9. **NON-PUBLIC WORKS BIDS:** A payment bond will be required for this bid. The amount of the bond will be 100% of the contract price unless otherwise indicated in the specifications. The payment bond shall be supplied at the signing of the contract.
10. All bidders must comply with the requirements stated in the attached "Standard Insurance Requirements" sheet attached to this bid solicitation. Prior to contract executions/purchase order issuance, the successful bidder will be required to provide final insurance certificates which shall name Jefferson Parish as an additional insured in accordance with the instructions in the aforementioned "Standard Insurance Requirements" sheet.
11. A bid bond will be required with bid submission in the amount of 5% of the total bid, unless otherwise stated in the bid specifications. Acceptable forms shall be limited to cashier's check, certified check, or surety bid bond. All sureties must be in original format (no copies). If submitting a bid online, vendors must submit an electronic bid bond through the respective online clearinghouse bond management system(s) as indicated in the electronic bid solicitation on Central Auction House. No scanned paper copies of any bid bond will be accepted as part of the electronic bid submission.
12. This is a requirements contract to be provided on an as needed basis. JEFFERSON PARISH makes no representations on warranties with regard to minimum guaranteed quantities unless otherwise stated in the bid specifications.
13. Freight charges should be included in total cost when quoting. If not quoted FOB DELIVERED, freight must be quoted as a separate item. Bid may be rejected if not quoted FOB DELIVERED or if freight charges are not indicated on bid form.
14. **PUBLIC WORKS BIDS - Completed, Signed and Properly Notarized Affidavits Required;** This applies to all solicitations for construction, alteration or demolition of public buildings or projects, in conformity with the provisions contained in LSA-RS 38:2212.9, LSA-RS 38:2212.10, LSA-RS 38:2224, and Sec 2-923.1 of the Jefferson Parish Code of Ordinances. For bidding purposes, all bidders must submit with bid submission COMPLETED, SIGNED and PROPERLY NOTARIZED Affidavits, including: Non-Conviction Affidavit, Non-Collusion Affidavit, Campaign Contribution Affidavit, Debt Disclosures Affidavit and E-Verify Affidavit. For the convenience of vendors, all affidavits have been combined into one form entitled PUBLIC WORKS BID AFFIDAVIT. This affidavit must be submitted in its original format, and without material alteration, in order to be compliant and for the bid to be considered responsive. A scanned copy of the completed, signed and properly notarized affidavit may be submitted with the bid, however, the successful bidder must submit the original affidavit in its original format and without material alteration upon contract execution. Failure to comply will result in the bid submission being rejected as non-responsive. The Parish reserves the right to award bid to the next lowest responsive and responsible bidder in this event.
15. **NON PUBLIC WORK BIDS - Completed, Signed and Properly Notarized Affidavits Required** in conformity with the provisions contained in LSA – RS 38:2224 and Sec 2-923.1 of the Jefferson Parish Code of Ordinances. For bidding purposes, all bidders must submit with bid submission COMPLETED, SIGNED and PROPERLY NOTARIZED Affidavits, including: Non-Collusion Affidavit, Debt Disclosures Affidavit and Campaign Contribution Affidavit. For the convenience of vendors, all affidavits have been combined into one form entitled NON PUBLIC WORKS BID AFFIDAVIT. This affidavit must be submitted in its original format, and without material alteration, in order to be compliant and for the bid to be considered responsive. A scanned copy of the completed, signed and properly notarized affidavit may be submitted with the bid, however, the successful bidder must submit the original affidavit in its original format and without material alteration upon contract execution. Failure to comply will result in the bid submission being rejected as non-responsive. The Parish reserves the right to award bid to the next lowest responsive and responsible bidder in this event.
16. The ensuing contract for this bid solicitation may be eligible for FEMA reimbursement and/or Federal funding/reimbursement. As such, the referenced appendix will be applicable accordingly and shall be considered a part of the bid documents. All applicable certifications must be duly completed, signed and submitted with bid submission. Failure to submit applicable certifications with bid submission will result in bid rejection.

**It shall be the duty of every parish officer, employee, department, agency, special district, board, and commission: and the duty of every contractor, subcontractor, and licensee of the parish, and the duty of every applicant for certification of eligibility for a parish contract or program, to cooperate with the Inspector General in any investigation, audit, inspection, performance review, or hearing pursuant to Jefferson Parish Code of Ordinances Section 2-155.10(19). By submitting a bid, vendor acknowledges this and will abide by all provisions of the referenced Jefferson Parish Code of Ordinances.**



DATE: 12/13/2018  
BID NO.: 50-00125051

INVITATION TO BID  
THIS IS NOT AN ORDER

Page: 4

## JEFFERSON PARISH

PURCHASING DEPARTMENT  
P.O. BOX 9  
GRETN, LA. 70054-0009  
504-364-2678

VENDOR:

Pemica Inc.

BUYER: DABRAHAM

As per LSA-RS 47:301 et seq., all governmental bodies are excluded from payment of sales taxes to any Louisiana taxing body. Quotations shall be based on F.O.B. Agency warehouse or jobsite, anywhere within the Parish as designated by the Purchasing Department.

JEFFERSON PARISH reserves the right to cancel all or any part of an order if not shipped promptly. No charges will be allowed for parking or cartage unless specified in quotation. The order must not be filled at a higher price than quoted. JEFFERSON PARISH reserves the right to cancel at any time and for any reason by issuing a THIRTY (30) day written notice to the contractor.

JEFFERSON PARISH is expecting all products to be new and all work to be done in workman-like manner, according to standard practices. Any deviations or alteration from the specifications must be indicated on the bid form for each item and upon request, product data for same must be submitted by the time specified by the Purchasing Department.

### DELIVERY: FOB JEFFERSON PARISH

INDICATE DELIVERY DATE ON EQUIPMENT AND SUPPLIES

4-6 week ARO

INDICATE STARTING TIME (IN DAYS) FOR CONSTRUCTION WORK

N/A.

INDICATE COMPLETION TIME (IN DAYS) FOR CONSTRUCTION WORK

N/A

In the event that addenda are issued with this bid, bidders MUST acknowledge all addenda on the bid form. Bidder must acknowledge receipt of an addendum on the bid form as indicated. Failure to acknowledge any addendum on the bid form will result in bid rejection.

Acknowledge Receipt of Addenda: NUMBER: #1 - December 13, 2018

NUMBER: \_\_\_\_\_

NUMBER: \_\_\_\_\_

NUMBER: \_\_\_\_\_

LOUISIANA CONTRACTOR'S LICENSE NO.: (if applicable) N/A.

### \*\*\* ALL BIDDERS MUST COMPLETE SECTION BELOW \*\*\*

FIRM NAME: <u>Pemica Inc.</u>	
SIGNATURE: <u>[Signature]</u> (Must be signed here)	TITLE: <u>General Manager</u>
PRINT OR TYPE NAME: <u>Antonio Navarro.</u>	
ADDRESS: <u>7324 SW 48th Street.</u>	
CITY, STATE: <u>Miami, Florida</u>	ZIP: <u>33155.</u>
TELEPHONE: <u>(305) 669 0771</u>	FAX: <u>(305) 675 0713.</u>
EMAIL ADDRESS: <u>antonio@pemica.com</u>	

TOTAL PRICE OF ALL BID ITEMS: \$ 4,990<sup>00</sup>



## INVITATION TO BID FROM JEFFERSON PARISH - continued

BID NO.: 50-00125051

SEALED BID

ITEM NUMBER	QUANTITY	U/M	DESCRIPTION OF ARTICLES	UNIT PRICE QUOTED	TOTALS
1	1.00	JOB	<p>Furnish and install (1) Walk Through Metal Detector</p> <p>0010-HI-PE Plus Enhanced Walk-Through multi-zoned metal detector, panel version, complete with four multi-zone display bars programmable as pacing lights and/or 60 localization zones low voltage DC power, RS-232 communication, anti-tamper on/off switch.</p> <p>Item #: HIPE/PZPLUS</p> <p>WE EXTEND THIS BID TO PROVIDE LABOR, MATERIAL, DELIVERY, EQUIPMENT, PROGRAMMING AND ALL OTHER INCIDENTALS NECESSARY TO SUPPLY AND INSTALL THE ABOVE DETECTOR.</p> <p>SECOND PARISH COURT 100 HUEY P. LONG AVENUE GRETN, LA 70053</p> <p>FOR A SITE VISIT AND/OR QUESTIONS PLEASE CONTACT:</p> <p>TIM HOSKINS 504-365-3379 THOSKINS@JEFFPARISH.NET</p>	\$4,990 <sup>00</sup>	\$4,990 <sup>00</sup>



# HI-PE Plus

## ENHANCED WALK-THROUGH MULTI-ZONE METAL DETECTOR

- Accurate Detection of magnetic, non-magnetic and mixed-alloy metal weapons
- 60 localization zones:
  - 20 vertical • 3 lateral
- High Discrimination and Throughput
- Compliant with and Certified to the Strictest Security Standards for weapons detection
- Exceptional Immunity to external interferences
- Unmatched Reliability
- Rapid Installation

### Applications

- ✓ Government Buildings
- ✓ Industries [Security]
- ✓ Nuclear Facilities [Security]
- ✓ Prisons [visitors]
- ✓ Public Events
- ✓ Amusement Parks
- ✓ Courts
- ✓ Cruise ships
- ✓ Data Processing Centers [EDP]
- ✓ Hotels
- ✓ Schools Security



[www.ceia-usa.com](http://www.ceia-usa.com)

**Threat Detection through Electromagnetics**

CEIA USA, Ltd. All rights reserved. CEIA USA reserves the right to make changes, at any moment and without notice, to the models (including programming), their accessories and options, to the prices and conditions of sale



## HI-PE Plus Enhanced Multi-Zone Metal Detector

CEIA is proud to present the new HI-PE Plus Multi-Zone Metal Detector, a development of the well-established HI-PE model. Accurate detection of all metals, high level of discrimination, full compliance with the latest Security Standards and exceptional immunity to external interferences are among the main peculiarities of this new device.

### Features



- Capability to detect the full range of metal weapon threats even within body cavities



- Met-Identity technology for Identification of Threat Composition

The most advanced Security Standards require detection of all ferrous and non-ferrous metal weapons and of those constructed in special non-magnetic alloys. The HI-PE Plus detects firearms and knives of this type, even when they are hidden within body cavities, and accurately indicate the position of the threat, its intensity and its prevalent composition. Inspection personnel thereby acquire thorough knowledge of the metal item and can act, according to procedures, with maximum effectiveness and security.

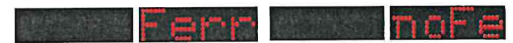


- 60 pinpointing zones with high resolution & precision:
  - 20 Vertical
  - 3 Lateral



#### MET-IDENTITY TECHNOLOGY

With Met-Identity technology, the HI-PE Plus allows you to know where, how much and what type of metal is being brought into the secure area.

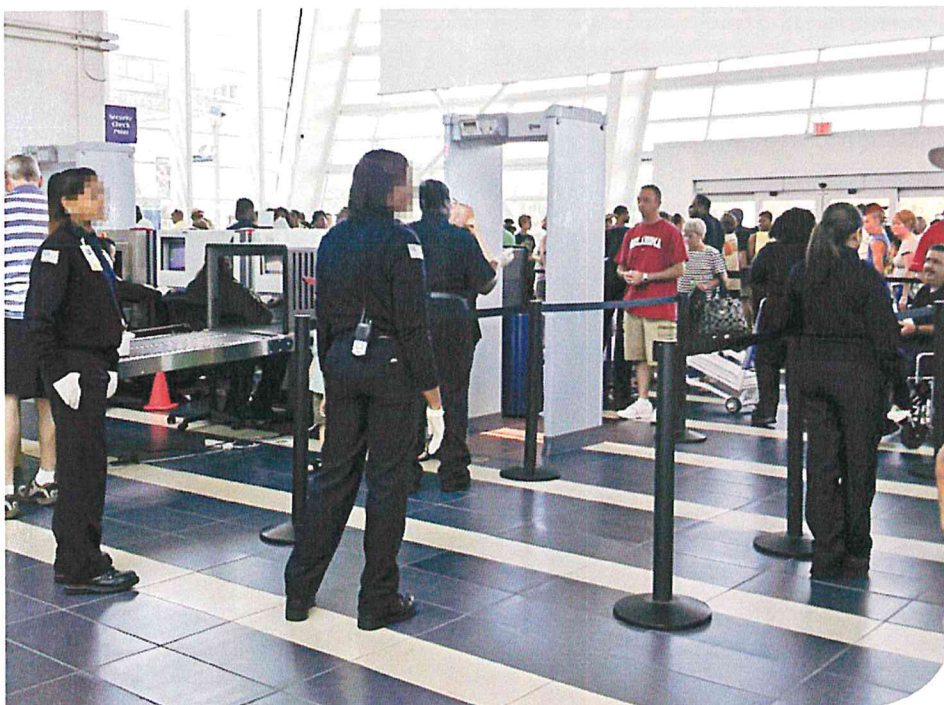
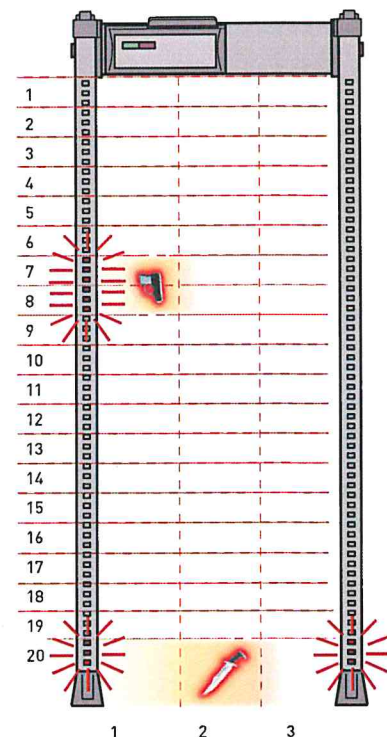


➤ FERROUS METAL

➤ NON FERROUS METAL

#### 60 LOCALIZATION ZONES

with left, center and right indication





## Benefits



- Cutting-edge discrimination technology allows personal effects to be ignored, creating rapid transit flow

The transit volume magnetic scanning system, invented by CEIA and applied since production of the first zonal Metal Detectors in 1986, allows state-of-the-art detection and discrimination results.

The HI-PE Plus has a very low nuisance alarm rate even at the strictest Security Levels requested today, and therefore allows high transit flow rates and the minimum need for intervention by inspection personnel.

## Unique Alarm Signaling



- 4 Multi-Zone Display Bars, each programmable as entry Stop/Go and/or local alarm indication
- High visibility of the control unit and the zone indication independent from the operator position and the installation environment

Accurate signaling is essential for best operation and flow management. The HI-PE Plus provides the user with fully-programmable signaling. Both entry-points can indicate with a high level of accuracy, even simultaneously, the vertical and lateral areas of transit of the threats detected, and can also be configured as 'traffic lights' to control transits through the detector.



- Flexible Acoustic Alarm Signaling System:
  - ✓ 10 Continuous and Pulsed Tones
  - ✓ 34 Special Sounds
- 10 Acoustic Intensity Levels

A complete acoustic alarm system allows personalization of the alarm tones and intensities, with a wide choice of continuous, pulsed and special tones at different levels of intensity. The wide volume control dynamic allows operation even in very noisy environments.



- High Precision Transit Counter:
    - ✓ In-Bound Transits
    - ✓ Out-Bound Transits
    - ✓ Alarm Rate
    - ✓ Automatic Compensation for repeated transits of the same person
- The Metal Detector provides an automatic count of the people passing through the access point in both directions and the related nuisance alarm percentage.

### ALARM



### NO ALARM



#### 4 MULTI-ZONE DISPLAY BARS

Light bars indicate metal position vertically and laterally and can also show pacing lights.



#### HIGH PRECISION TRANSIT COUNTER

Two photocells fitted into the archway allow counting of transits, alarms and percentage of alarms.



## HI-PE Plus Enhanced Multi-Zone Metal Detector

### Most Powerful and Versatile Security Features



#### ■ Up to 50 built-in Security Programs

- ☒ Up to 30 International Standards
 ☒ Up to 20 Customizable Levels

Setting the Security Levels could not be easier and more versatile than in the HI-PE Plus. Users can choose directly from the known International Standards or request implementation of a Standard personalized to their own requirements. Users can also create their own work program and save it in internal memory provided for the purpose.



#### ■ Chip Card system for fast, simple and secure parameter changes [i.e. alarm volume and tone, counter reading, etc...] and security level selection

One unique characteristic of the CEIA Metal Detectors is the chip-card system, which allows the Head of Security to set the Security Level quickly, reliably and without having to program the device in any way.




#### ■ Any security standard can be enhanced with selectable random alarm probability



#### CHIP CARD SYSTEM

*Chip Card for automatic selection of Security Levels and parameter changes.*



 *Exceptional immunity to environmental interferences makes the Metal Detector easy to use even when electrical noise is encountered.*

### Rapid Installation



#### ■ One touch guided automatic installation [OTS]

Innovative function assisting the installation through an automatic step-by-step procedure



#### ■ Continuous self diagnostics assures monitored performance reliability

### Communication Capabilities



TYPE OF OPERATION	Ethernet	USB	Infrared	Bluetooth	RS-232
Maintenance	○	○		■	■
Remote Control	○		■	■	■
Remote Data collection	○				

■ STANDARD ○ OPTION

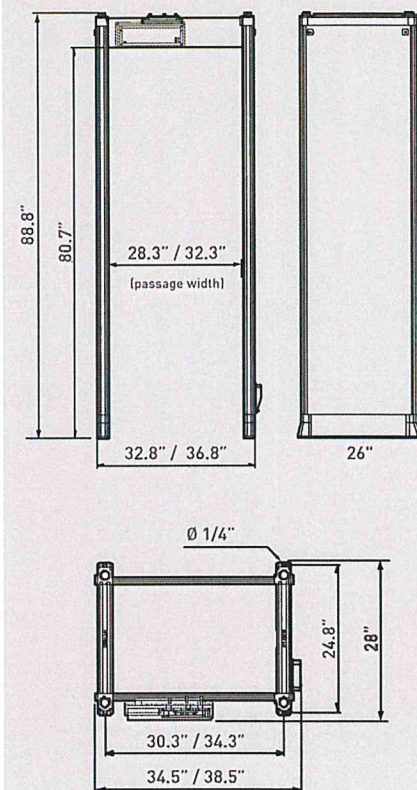


## Model Configuration

Features	HI-PE Plus/PZ
Compliant with the strictest detection and discrimination standards for EMDs (Enhanced Metal Detectors)	■
4 display bars each programmable as zone indicators and/or pacing lights	■
60 localization zones (20 vertical x 3 lateral) with left, center and right indication	■
Chip Card Reader	■
Bluetooth, infrared and RS-232 communication	■
High precision transit counter	■
Programmable Random Alarm capability	■
3-Level Password and hardware key access protection	■
Met-Identity technology (separate Ferrous and Non-Ferrous alarm signaling)	■
One Touch Automatic Self Installation (OTS)	■
Automatic Operational Functional Verification (OFV)	■
Automatic Vibration Compensation (AVS, EVA)	■
Automatic Channel Search (CS)	■
Automatic Floor Gain Adjustment (FGA)	■
Automatic Technical Functional Verification (TFV)	■
Automatic Environmental Noise Compensation (ENA)	■
Powered by safe low voltage DC	■
Anti-tamper on/off switch	■
Integrated web-server & logger (includes Ethernet and USB interface)	○
Weather resistant protection	○
Anti-vandalism, anti-tampering protection	○
IP65 protection (includes weather resistant and anti-vandalism options)	○
Embedded battery charger and under-voltage protection	○
Long life crossbar battery back-up	○
32.3" useful passage width	○

■ STANDARD ○ OPTION

## Dimensions



### UNDER THE ALARM THRESHOLD

- Small metal mass
- Medium metal mass

### OVER THE ALARM THRESHOLD

- Medium metal mass
- Large metal mass

Green and Red Metering Signals Proportional to the Metal Mass Detected



## HI-PE Plus Enhanced Multi-Zone Metal Detector

### Options / Upgrade Kits

#### ➤ Weather Resistant Protection

Kit for upgrading the standard version to outdoor applications according to IEC 60950-22; this kit includes shelters, crossbars, protection covers for power supply and IP67 mains power supply adapter.

- 28.3" passage width (part # 55630)
- 32.3" passage width (part # 55633)



#### ➤ Anti-vandalism, Anti-tampering Protection

This option includes stainless steel control unit, IP67 mains power supply adapter, protection covers for power supply and antenna connection compartments, equipped with screws requiring tools for removal. Part # 55629



#### ➤ IP65 Protection

This option includes the Weather Resistant and Anti-vandalism kits.

- 28.3" passage width (part # 55631);
- 32.3" passage width (part # 55632)

#### ➤ 32.3" Useful Passage Width

Part # 55635

#### ➤ Long life crossbar battery back-up

Crossbar battery back-up in stainless steel case. Provides up to 8 hours of autonomous working time.

Part # 55681



#### ➤ Embedded Battery Charger and Under-voltage Protection

Anti-tamper on/off switch, RS-232 interface, battery charger with 12 hours mains disconnection diagnostic alarm.

Part # APSM2Plus/P



#### ➤ Integrated Web-server & Logger, Battery Back-up and Charger

Anti-tamper on/off switch, RS-232, USB, 10/100 baseT Ethernet interface, data logger, real-time clock, integrated web-server, transit statistical data analysis, 20' internal battery back-up with 12 hours mains disconnection diagnostic alarm.

Part # APSiM2Plus/P





## Accessories

### ➤ Chip Cards

Chip cards for simple and secure selection of Security Levels and parameter setting. List of chip-cards available on request.



### ➤ RCU2

Control unit for full remote access, including alarm signaling and programming of CEIA Walk Through Metal Detectors (part # RCU2). The connection is performed via bluetooth (standard) or via cable connection (part # 3618).

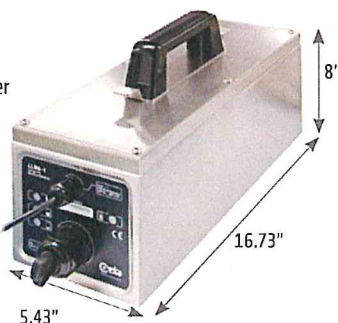


### ➤ MBSU-2

Independent, compact size, long life power supply in weatherproof stainless steel case, with embedded fast charger:

- 14 hours typical (10 hours minimum) continuous operation with HI-PE Plus
- 5 hours typical charging time.

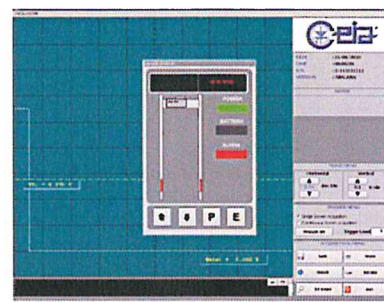
Part # MBSU-2



### ➤ MD-Scope2

Powerful, PC based installation and service software. Includes oscilloscope and terminal functionality (part # MD-SCOPE2).

The connection is performed via bluetooth (standard) or via cable connection (part # 3805).



### ➤ IRC-1

Infrared Remote Controller for wireless remote programming of the control unit.  
Part # 47180

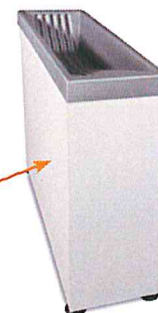


### ➤ Upper Connection Module

This extension cable allows the connection of power supply and serial communication to personal computers or CEIA accessories, such as RCU-2. Part # 46650

### ➤ Metal Detector Divesting Table FOR MANAGEMENT OF PERSONAL METAL BELONGINGS

- Standard length: 24" (Part # 18074)
- Extended length: 47" (Part # 39491)



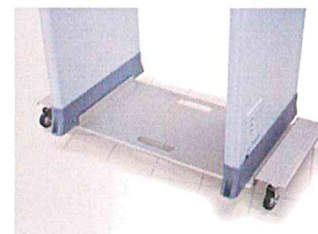
### ➤ RRU

Remote relay unit (RRU) to repeat the detection alarms of the gate through a relay contact. The RRU module can be used for integration of the Metal Detector in interlocked door systems. Part # RRU

### ➤ Stainless Steel Deck Dolly

FOR LOCAL MOVING OF THE PANEL METAL DETECTOR GATE

- Robust construction in AISI 316L stainless steel
- Rubber-covered castor-type wheels for easy movement
- Incorporated handles for transport (available only for 28.3" useful passage width: part # 50789)



### ➤ IP67 Mains Power Supply

100W IP67 power supply for heavy duty applications. Vandal resistant. It is provided with flanges for simple installation.  
Part # 62697



### ➤ ID-Holder

This accessory is designed to be hung on a crossbar of the archway, either at the entrance or the exit side. It can hold, for instance, a notice or an ID number for waiting people or for the screener.

Part # 54095



### ➤ Test Samples Kit

Reference Samples for accurate verification of the Security Level. Includes guided procedures and certificate of calibration.

- Part # EMD-SK-GAL
- Part # EMD-SK-GDML





## HI-PE Plus

## Enhanced Multi-Zone Metal Detector



### Specifications

KEY FEATURES	Wide range of threat detection from guns to 1/2 cutter blade	Automatic Environmental Noise Compensation (ENA)
	Excellent discrimination of personal metal effects	Met-Identity technology identifies and signals the metal type in real time
	60 localization zones (20 vertical x 3 lateral) with left, center and right indication	High precision bidirectional counter with automatic rescreening compensation
	One touch automatic self installation (OTS)	Chip Card capability for fast, simple, and secure programming
	Automatic Operational Functional Verification (OFV)	Random alarm capability programmable from 0% to 100%
	Automatic Vibration Compensation (AVS,EVA)	Exceptional Immunity to external interferences
	Automatic Channel Search (CS)	Powered by safe low voltage DC
	Automatic Floor Gain Adjustment (FGA)	Standard Interfaces: RS-232, Bluetooth, Infrared
	Automatic Technical Functional Verification (TFV)	Other available interfaces: Wi-Fi, Ethernet, USB
QUALITY	Continuous self diagnostic system	
	Proven reliability	
	No periodic re-calibration and preventive maintenance required	
	No scheduled maintenance	
	Fully digital design	
WALK-THROUGH GATE STRUCTURE	State-of-the-art, robust and washable panels	
	Protected against aging, weather and wear	
CENTRAL CONTROL UNIT	Ergonomic and robust design	
	High visibility alphanumeric display and programming keyboard	
	Made of advanced plastics or stainless steel and anti-vandalism construction (option)	
	Access to the front panel protected by hardware key and 3 levels of passwords	
ALARM SIGNALING	VISUAL SIGNALS	Multi-zone display bar for "height on person" localization
		4 light bars with selectable entry/exit and pacing indication
		Green and red metering signals proportional to the mass of the detected target
	AUDIO SIGNALS	10 selectable continuous and pulsed tone plus 34 special tones
		10 selectable sound intensities ranging from 0 to 90 dbA at 1m
TYPE OF SIGNALING	VISUAL	Fixed or proportional to the mass in transit - visible from 6m under lighting of 4000lux
	VISUAL ZONE INDICATION	60 distinct zones (20 vertical x 3 lateral) entry and exit side
PROGRAMMING	Up to 50 built-in security programs (up to 30 International Standards, up to 20 Customizable Levels)	
	Remote via RS-232, Infrared Remote Control Unit, Bluetooth or Ethernet 10/100 base T (option) interface	
	SECURITY LEVEL	International Standard (IS) command
		Chip card
	Local by Control Unit alphanumeric display and keyboard	
OPERATIONAL FEATURES	Programming and chip card access protected by user and super-user passwords	
	Very high discrimination and transit flow rates five or more times greater than other metal detection systems	
	Quick reset time as short as 0.2 seconds for high throughput rate	
	Very high detection speed (up to 50 ft/sec.)	
	Built-in operational functional verification	
INSTALLATION DATA	One-touch key reading of inbound, outbound and Security Level Data	
	Automatic synchronisation between two or more metal detectors with distance of down to 2" (5 cm) without the use of external cables	
	Automatic Installation function (OTS)	

### Environmental Data

- POWER SUPPLY : 100...240V~ -10/+15%, 47...63Hz, 40 VA max
- OPERATING TEMPERATURE: -4°F to 158°F (-35°F to 158°F upon request)
- STORAGE TEMPERATURE: -35°F to 158°F
- RELATIVE HUMIDITY: 0 to 95% (without condensation)

### Certification and Compliance

- Compliant with and certified to the applicable Standards for Enhanced Metal Detectors
- Compliant with the applicable electromagnetic Standards on Human Exposure and Pacemaker Safety
- Compliant with all Airport Security Standards worldwide
- Compliant with applicable International Standards for electrical safety and EMC
- Harmless to magnetic media (CDs, tapes, etc.)

### Comprehensive support

CEIA USA PROVIDES FULL OPERATIONAL AND TECHNICAL TRAINING SUPPORT BY CERTIFIED PERSONNEL EITHER AT CEIA USA FACILITY OR AT CUSTOMER PREMISES

- phone technical support
- in-house and on-site repair/services
- standard and custom training



CEIA USA Ltd - 9155 Dutton Drive, Twinsburg, OH 44087

Phone: (330) 405 3190 - Fax (330) 405 3196 - e-mail: security@ceia-usa.com

DP060K0061V2000US

[www.ceia-usa.com](http://www.ceia-usa.com)

Call Toll-Free 888-532-CEIA

CEIA USA reserves the right to make changes, at any moment and without notice, to the models (including programming), their accessories and options, to the prices and conditions of sale



## **STANDARD INSURANCE REQUIREMENTS FOR BIDDING PURPOSES**

All required insurance under this bid shall conform to Jefferson Parish Resolution No. 113646 or No. 113647, as applicable. Contractors may not commence any work under any ensuing contract unless and until all required insurance and associated evidentiary requirements thereto have been met, along with any additional specifications contained in the **Invitation to Bid**. Except as where otherwise precluded by law, the Parish Attorney or his designee, with the concurrence of the Director of Risk Management or his designee, may agree on a case-by-case basis, to deviate from Jefferson Parish's standard insurance requirements, as provided in this Section. Vendors requesting deviation therefrom shall submit such requests in writing, along with compelling substantiation, to the Purchasing Department prior to the bid's due date. Any changes to the insurance requirements will be reflected in the bid specifications and addenda. Prior to contract execution and at all times thereafter during the term of such contract, contractors must provide and continuously maintain all coverages as required by the foregoing Resolutions, and the contract documents. Failure to do so shall be grounds for suspension, discontinuation or termination of the contract.

---

For bidding purposes, bidders must submit with bid submission a current (valid) insurance certificate evidencing the required coverages. Failure to comply will cause bid to be rejected. The current insurance certificate will be used for proof of insurance at time of evaluation. Thereafter, and prior to contract execution, the low bidder will be required to provide final insurance certificates to the Parish which shall name **the Jefferson Parish, its Districts Departments and Agencies under the direction of the Parish President and the Parish Council** as additional insureds regarding negligence by the contractor for the Commercial General Liability, Workmen's Compensation Insurance and the Comprehensive Automobile Liability policies. Additionally, said certificates should reflect the name of the Parish Department receiving goods and services and reference the respective Jefferson Parish bid number.

---

### **JEFFERSON PARISH REQUIRED STANDARD INSURANCE**

#### **☒ WORKER'S COMPENSATION INSURANCE**

As required by Louisiana State Statute, exception; Employer's Liability, Section B shall be \$1,000,000 per occurrence when Work is to be over water and involves maritime exposures to cover all employees not covered under the State Worker's Compensation Act, otherwise this limit shall be no less than \$500,000 per occurrence.

**Note:** If your company is not required by law to carry workmen's compensation insurance, i.e. not a Louisiana company, sole employee of the company, then bidders must request a workmen's compensation insurance declaration affidavit prior to the bid opening date. This insurance declaration affidavit must be fully completed, signed, properly notarized and submitted with the bid. A scanned copy may be submitted with the bid; however, the successful bidder must submit the original affidavit in its original format and without material alteration upon contract execution. Failure to comply will result in the bid submission being



rejected as non-responsive. The Parish reserves the right to award bid to the next lowest responsive and responsible bidder in this event.

☒ **COMMERCIAL GENERAL LIABILITY**

Shall provide limits not less than the following: \$1,000,000.00 Combined Single Limit per Occurrence for bodily injury and property damage.

☒ **COMPREHENSIVE AUTOMOBILE LIABILITY**

Bodily injury liability \$1,000,000.00 each person; \$1,000,000.00 each occurrence.  
Property Damage Liability \$1,000,000.00 each occurrence.

**Note:** This category may be omitted if bidders do not/will not utilize company vehicles for the project or do not possess company vehicles. Bidder must request an automobile insurance declaration affidavit prior to the bid opening date. This insurance declaration affidavit must be fully completed, signed, properly notarized and submitted with the bid. A scanned copy of the completed, signed and properly notarized affidavit may be submitted with the bid; however, the successful bidder must submit the original affidavit in its original format and without material alteration upon contract execution. Failure to comply will result in the bid submission being rejected as non-responsive. The Parish reserves the right to award bid to the next lowest responsive and responsible bidder in this event.

**DEDUCTIBLES**

No insurance required shall include a deductible not greater than \$10,000.00. The cost of the deductible shall be borne by the contractor.

NOTE: If the vendor requires a change in deductibles, the request must be submitted in writing to the Purchasing Department prior to the due date of the bid. Such request shall be reviewed by the Parish Attorney's Office with the concurrence of the Director of Risk Management.

**UMBRELLA LIABILITY COVERAGE**

An umbrella policy or excess may be used to meet minimum requirements.

**FOR CONSTRUCTION AND RENOVATION PROJECTS:**

The following are required unless otherwise specified in the bid. Such insurance is due upon contract execution.

**1) OWNER'S PROTECTIVE LIABILITY**

To be for the same limits of liability for bodily injury and property damage liability established for commercial general liability.

**2) BUILDER'S RISK INSURANCE**

The contractor shall maintain Builder's Risk Insurance at his own expense to insure both the owner (Parish of Jefferson) and contractor as their interest may appear.





# JEFFERSON PARISH

Department of Purchasing

Michael S. Yenni  
Parish President

Renny Simno  
Director

November 2018

## CHANGES TO JEFFERSON PARISH BIDDING PROCEDURES

- **As of November 13, 2018, for all advertised (2:00 pm) bids, the bid tabulation will be released to the vendors 14 days from the bid opening date.**

### Other continued changes:

- Bid submissions can be delivered to the Joseph S. Yenni Building, 1221 Elmwood Park Blvd., Suite 404, Jefferson, LA 70123 or General Government Building, 200 Derbigny St., Suite 4400, Gretna, LA 70053. Bidders may submit bid submission to the East Bank location, pending authorization in each bid package. **Bidders should carefully read and must respond accordingly per the requirements of the bid packages. NOTE: Bidders submitting bids on the day of bid opening, bidders must submit at the West Bank location only.**
- For all advertised sealed bids, written evidence of signature authority must be included with bid submission.
- Current W9 Forms and vendor applications may be submitted at any time; however, if your company is not registered and/or a current W-9 form is not on file, a current W-9 form must be supplied upon contract execution, should you be awarded a contract and/or issued a purchase order.
- **Proof of insurance in the form of a current certificate evidencing coverages is required with bid submission from all bidders.** Bidders must read the insurance requirement attachment included in each bid package for specific instructions. Upon contract execution, successful bidder must produce final insurance certificates in accordance with Jefferson Parish insurance requirements.

**Bidders should reference the "Additional Requirements" section of the bid instructions and/or the "Important Notice to Bidders" included in the bid package for specific requirements to respond accordingly.**

For more information, please call Jefferson Parish Purchasing at 504-364-2678.

Joseph S. Yenni Building – 1221 Elmwood Park Blvd., Ste. 404, Jefferson, LA 70123  
Office 504.364.2678

General Government Bldg. – 200 Derbigny St – Suite 4400 - Gretna, LA 70053  
Office 504.364.2678

Email: [Purchasing@jeffparish.net](mailto:Purchasing@jeffparish.net) Website: [www.jeffparish.net](http://www.jeffparish.net)





# JEFFERSON PARISH

## Department of Purchasing

Michael S. Yenni  
Parish President

Renny Simno  
Director

December 17, 2018

### ADDENDUM # 1

**Bid No.: 50-00125051**

**Original Bid Opening Date: 12-19-18**  
**Postponed to: 1-4-19**

**For: Furnish and Install (1) Walk through Metal Detector**

---

**Q1.** Will you accept other manufacturers metal detectors if features are equivalent to the ones listed on the bid?

(1) Multi-zone (2) Panel version (3) Four display bars (4) Pacing lights

(5) 60 localization zones (6) Low voltage DC power (7) RS232 communication

(8) Anti-tamper on/off switch

**A1.** Yes, those above features along with the attached specifications.

**Note:** Where brand names and stock numbers are specified, it is for the purpose of establishing certain minimum standards of quality. Bids may be submitted for products of equal quality, provided brand names and stock numbers are specified along with the specifications.

Sincerely,

Doris Abraham

Buyer Name, Buyer I  
Jefferson Parish Purchasing Department

**Bidders must acknowledge all addenda on the bid form. Bidder acknowledges receipt of this addendum on the bid form as indicated. Failure to do so will result in bid rejection.**

**This addendum is a part of the contract documents and modifies the original bidding documents and specifications. The contents of this addendum shall be included in the contract documents. Changes made by this addendum shall take precedence over the documents of earlier date.**



# Request for Taxpayer Identification Number and Certification

► Go to [www.irs.gov/FormW9](http://www.irs.gov/FormW9) for instructions and the latest information.

Give Form to the  
requester. Do not  
send to the IRS.

**1** Name (as shown on your income tax return). Name is required on this line; do not leave this line blank.  
Kemica Inc.

**2** Business name/disregarded entity name, if different from above

**3** Check appropriate box for federal tax classification of the person whose name is entered on line 1. Check only **one** of the following seven boxes.

☐ Individual/sole proprietor or single-member LLC

☐ Limited liability company. Enter the tax classification (C=C corporation, S=S corporation, P=Partnership) ► \_\_\_\_\_

**Note:** Check the appropriate box in the line above for the tax classification of the single-member owner. Do not check LLC if the LLC is classified as a single-member LLC that is disregarded from the owner unless the owner of the LLC is another LLC that is **not** disregarded from the owner for U.S. federal tax purposes. Otherwise, a single-member LLC that is disregarded from the owner should check the appropriate box for the tax classification of its owner.

☐ Other (see instructions) ► \_\_\_\_\_

☐ C Corporation

☐ S Corporation

☐ Partnership

☐ Trust/estate

**4** Exemptions (codes apply only to certain entities, not individuals; see instructions on page 3):

Exempt payee code (if any) \_\_\_\_\_

Exemption from FATCA reporting code (if any) \_\_\_\_\_

(Applies to accounts maintained outside the U.S.)

**5** Address (number, street, and apt. or suite no.) See instructions.  
7324 SW 40th Street.

**6** City, state, and ZIP code  
Miami, Florida 33155

**7** List account number(s) here (optional)

**Requester's name and address (optional)**

## Part I Taxpayer Identification Number (TIN)

Enter your TIN in the appropriate box. The TIN provided must match the name given on line 1 to avoid backup withholding. For individuals, this is generally your social security number (SSN). However, for a resident alien, sole proprietor, or disregarded entity, see the instructions for Part I, later. For other entities, it is your employer identification number (EIN). If you do not have a number, see *How to get a TIN*, later.

**Note:** If the account is in more than one name, see the instructions for line 1. Also see *What Name and Number To Give the Requester* for guidelines on whose number to enter.

**Social security number**

			-			-				
--	--	--	---	--	--	---	--	--	--	--

or

**Employer identification number**

6	5	-	1	0	2	1	2	6	6
---	---	---	---	---	---	---	---	---	---

## Part II Certification

Under penalties of perjury, I certify that:

- The number shown on this form is my correct taxpayer identification number (or I am waiting for a number to be issued to me); and
- I am not subject to backup withholding because: (a) I am exempt from backup withholding, or (b) I have not been notified by the Internal Revenue Service (IRS) that I am subject to backup withholding as a result of a failure to report all interest or dividends, or (c) the IRS has notified me that I am no longer subject to backup withholding; and
- I am a U.S. citizen or other U.S. person (defined below); and
- The FATCA code(s) entered on this form (if any) indicating that I am exempt from FATCA reporting is correct.

**Certification instructions.** You must cross out item 2 above if you have been notified by the IRS that you are currently subject to backup withholding because you have failed to report all interest and dividends on your tax return. For real estate transactions, item 2 does not apply. For mortgage interest paid, acquisition or abandonment of secured property, cancellation of debt, contributions to an individual retirement arrangement (IRA), and generally, payments other than interest and dividends, you are not required to sign the certification, but you must provide your correct TIN. See the instructions for Part II, later.

**Sign Here**

Signature of U.S. person ► [Signature]

Date ► 12/17/2013

## General Instructions

Section references are to the Internal Revenue Code unless otherwise noted.

**Future developments.** For the latest information about developments related to Form W-9 and its instructions, such as legislation enacted after they were published, go to [www.irs.gov/FormW9](http://www.irs.gov/FormW9).

## Purpose of Form

An individual or entity (Form W-9 requester) who is required to file an information return with the IRS must obtain your correct taxpayer identification number (TIN) which may be your social security number (SSN), individual taxpayer identification number (ITIN), adoption taxpayer identification number (ATIN), or employer identification number (EIN), to report on an information return the amount paid to you, or other amount reportable on an information return. Examples of information returns include, but are not limited to, the following.

- Form 1099-INT (interest earned or paid)

- Form 1099-DIV (dividends, including those from stocks or mutual funds)
  - Form 1099-MISC (various types of income, prizes, awards, or gross proceeds)
  - Form 1099-B (stock or mutual fund sales and certain other transactions by brokers)
  - Form 1099-S (proceeds from real estate transactions)
  - Form 1099-K (merchant card and third party network transactions)
  - Form 1098 (home mortgage interest), 1098-E (student loan interest), 1098-T (tuition)
  - Form 1099-C (canceled debt)
  - Form 1099-A (acquisition or abandonment of secured property)
- Use Form W-9 only if you are a U.S. person (including a resident alien), to provide your correct TIN.

If you do not return Form W-9 to the requester with a TIN, you might be subject to backup withholding. See What is backup withholding, later.





# CERTIFICATE OF LIABILITY INSURANCE

DATE (MM/DD/YY)  
12/17/18

<b>PRODUCER</b> Procom Insurance Underwriters 4909 SW 74th Ct. Miami, FL 33155 Phone (305) 740-4460 Fax (305) 740-4469		<b>THIS CERTIFICATE IS ISSUED AS A MATTER OF INFORMATION ONLY AND CONFERS NO RIGHTS UPON THE CERTIFICATE HOLDER. THIS CERTIFICATE DOES NOT AMEND, EXTEND OR ALTER THE COVERAGE AFFORDED BY THE POLICIES BELOW.</b>		
<b>INSURED</b> PEMICA, INC. 7324 SW 48 STREET MIAMI, FL 33155 305-668-0771		<b>INSURERS AFFORDING COVERAGE</b>		<b>NAIC #</b>
		INSURER A: THE BURLINGTON INS. CO.		23620
		INSURER B: ASSOCIATED INDUSTRIES INS. CO.		23140
		INSURER C:		
		INSURER D:		
INSURER E:				

## COVERAGES

THE POLICIES OF INSURANCE LISTED HAVE BEEN ISSUED TO THE INSURED NAMED ABOVE FOR THE POLICY PERIOD INDICATED. NOTWITHSTANDING ANY REQUIREMENT, TERM OR CONDITION OF ANY CONTRACT OR OTHER DOCUMENT WITH RESPECT TO WHICH THIS CERTIFICATE MAY BE ISSUED OR MAY PERTAIN. THE INSURANCE AFFORDED BY THE POLICIES DESCRIBED HEREIN IS SUBJECT TO ALL THE TERMS, EXCLUSIONS AND CONDITIONS OF SUCH POLICIES. AGGREGATE LIMITS SHOWN MAY HAVE BEEN REDUCED BY PAID CLAIMS.

INSR LTR	ADD'L INSRD	TYPE OF INSURANCE	POLICY NUMBER	POLICY EFFECTIVE DATE (MM/DD/YYYY)	POLICY EXPIRATION DATE (MM/DD/YYYY)	LIMITS		
A	<input checked="" type="checkbox"/>	<b>GENERAL LIABILITY</b>	535BW45698	05/26/2018	05/26/2019	EACH OCCURRENCE	2,000,000	
		<input checked="" type="checkbox"/> COMMERCIAL GENERAL LIABILITY				DAMAGE TO RENTED PREMISES (Ea occurrence)	100,000	
		<input type="checkbox"/> CLAIMS MADE <input checked="" type="checkbox"/> OCCUR				MED EXP (Any one person)	5,000	
		<input checked="" type="checkbox"/> 1000 BI/PD DED				PERSONAL & ADV INJURY	2,000,000	
		<input type="checkbox"/>				GENERAL AGGREGATE	2,000,000	
GEN'L AGGREGATE LIMIT APPLIES PER:						PRODUCTS - COMP/OP AGG	2,000,000	
<input type="checkbox"/> POLICY <input type="checkbox"/> PROJECT <input type="checkbox"/> LOC								
	<input type="checkbox"/>	<b>AUTOMOBILE LIABILITY</b>				COMBINED SINGLE LIMIT (Ea accident)		
		<input type="checkbox"/> ANY AUTO				BODILY INJURY (Per person)		
		<input type="checkbox"/> ALL OWNED AUTOS				BODILY INJURY (Per accident)		
		<input type="checkbox"/> SCHEDULED AUTOS				PROPERTY DAMAGE (Per accident)		
		<input type="checkbox"/> HIRED AUTOS						
<input type="checkbox"/> NON OWNED AUTOS								
	<input type="checkbox"/>	<b>GARAGE LIABILITY</b>				AUTO ONLY - EA ACCIDENT		
		<input type="checkbox"/> ANY AUTO				OTHER THAN EA ACC		
		<input type="checkbox"/>				AUTO ONLY: AGG		
		<b>EXCESS / UMBRELLA LIABILITY</b>				EACH OCCURRENCE		
						<input type="checkbox"/> OCCUR <input type="checkbox"/> CLAIMS MADE	AGGREGATE	
	<input type="checkbox"/>	<input type="checkbox"/> DEDUCTIBLE						
		<input type="checkbox"/> RETENTION \$						
		<b>WORKERS COMPENSATION AND EMPLOYERS' LIABILITY</b>				<input checked="" type="checkbox"/> WC STATUTORY LIMITS <input type="checkbox"/> OTHER		
						ANY PROPRIETOR / PARTNER / EXECUTIVE OFFICER / MEMBER EXCLUDED? (Mandatory in NH)	E.L. EACH ACCIDENT	1,000,000
						If yes, describe under SPECIAL PROVISIONS below	E.L. DISEASE - EA EMPLOYEE	1,000,000
<b>OTHER</b>						E.L. DISEASE - POLICY LIMIT	1,000,000	

DESCRIPTION OF OPERATIONS / LOCATIONS / VEHICLES / EXCLUSIONS ADDED BY ENDORSEMENT / SPECIAL PROVISIONS  
WHOLESALE DISTRIBUTORS AND INSTALLATION OF ELECTRIC SCALE & METAL DETECTORS

## CERTIFICATE HOLDER

## CANCELLATION

Additional Insured Jefferson Parish Purchasing Department 200 Derbigny Street General Government Building, Suite 4400 Gretna LA 70053	SHOULD ANY OF THE ABOVE DESCRIBED POLICIES BE CANCELLED BEFORE THE EXPIRATION DATE THEREOF, THE ISSUING INSURER WILL ENDEAVOR TO MAIL 30 DAYS WRITTEN NOTICE TO THE CERTIFICATE HOLDER NAMED TO THE LEFT, BUT FAILURE TO DO SO SHALL IMPOSE NO OBLIGATION OR LIABILITY OF ANY KIND UPON THE INSURER, ITS AGENTS OR REPRESENTATIVES.
	AUTHORIZED REPRESENTATIVE ISIDRO GUILLOMA



## CERTIFICATE OF INSURANCE

**SUCH INSURANCE AS RESPECTS THE INTEREST OF THE CERTIFICATE HOLDER NAMED BELOW WILL NOT BE CANCELED OR OTHERWISE TERMINATED WITHOUT GIVING 10 DAYS PRIOR WRITTEN NOTICE TO THE CERTIFICATE HOLDER, BUT IN NO EVENT SHALL THIS CERTIFICATE BE VALID MORE THAN 30 DAYS FROM THE DATE WRITTEN. THIS CERTIFICATE OF INSURANCE DOES NOT CHANGE THE COVERAGE PROVIDED BY ANY POLICY DESCRIBED BELOW.**

This certifies that: ☒ STATE FARM MUTUAL AUTOMOBILE INSURANCE COMPANY of Bloomington, Illinois  
☐ STATE FARM FIRE AND CASUALTY COMPANY of Bloomington, Illinois  
☐ STATE FARM COUNTY MUTUAL INSURANCE COMPANY OF TEXAS of Dallas, Texas  
☐ STATE FARM INDEMNITY COMPANY of Bloomington, Illinois, or  
☐ STATE FARM GUARANTY INSURANCE COMPANY of Bloomington, Illinois

has coverage in force for the following Named Insured as shown below:

NAMED INSURED: PEMICA INCORPORATED				
ADDRESS OF NAMED INSURED: 7324 SW 48 STREET, MIAMI, FL 33155-5523				
POLICY NUMBER	979 6771-E31-59H	458 8927-A16-59M	C24 7135-B08-59	D32 9675-A06-59A
EFFECTIVE DATE OF POLICY	11/31/18-05/31/19	07/16/18-01/16/19	08/08/18-02/08/19	07/06/18-01/06/19
DESCRIPTION OF VEHICLE (Including VIN)	17 NISSAN ALTIMA VIN# 1N4AL3AP4HC294480	16 TOYOTA TACOMA VIN# 5TFAX5GN8GX061922	NON OWNED LIABILITY	14 NISSAN NV 200 VIN# 3N6CM0KN6EK702508
LIABILITY COVERAGE	<input checked="" type="checkbox"/> YES <input type="checkbox"/> NO	<input checked="" type="checkbox"/> YES <input type="checkbox"/> NO	<input type="checkbox"/> YES <input type="checkbox"/> NO	<input checked="" type="checkbox"/> YES <input type="checkbox"/> NO
LIMITS OF LIABILITY				
a. Bodily Injury				
Each Person	1,000,000	1,000,000		1,000,000
Each Accident	1,000,000	1,000,000		1,000,000
b. Property Damage				
Each Accident	1,000,000	1,000,000		1,000,000
c. Bodily Injury & Property Damage Single Limit				
Each Accident			1,000,000	
PHYSICAL DAMAGE COVERAGES	<input checked="" type="checkbox"/> YES <input type="checkbox"/> NO	<input checked="" type="checkbox"/> YES <input type="checkbox"/> NO	<input type="checkbox"/> YES <input type="checkbox"/> NO	<input checked="" type="checkbox"/> YES <input type="checkbox"/> NO
a. Comprehensive	\$ 500 Deductible	\$ 500 Deductible	\$ Deductible	\$ 500 Deductible
b. Collision	<input checked="" type="checkbox"/> YES <input type="checkbox"/> NO \$ 500 Deductible	<input checked="" type="checkbox"/> YES <input type="checkbox"/> NO \$ 500 Deductible	<input type="checkbox"/> YES <input type="checkbox"/> NO \$ Deductible	<input checked="" type="checkbox"/> YES <input type="checkbox"/> NO \$ 500 Deductible
EMPLOYERS NON-OWNED CAR LIABILITY COVERAGE	<input checked="" type="checkbox"/> YES <input type="checkbox"/> NO	<input checked="" type="checkbox"/> YES <input type="checkbox"/> NO	<input checked="" type="checkbox"/> YES <input type="checkbox"/> NO	<input checked="" type="checkbox"/> YES <input type="checkbox"/> NO
HIRED CAR LIABILITY COVERAGE	<input checked="" type="checkbox"/> YES <input type="checkbox"/> NO	<input checked="" type="checkbox"/> YES <input type="checkbox"/> NO	<input checked="" type="checkbox"/> YES <input type="checkbox"/> NO	<input checked="" type="checkbox"/> YES <input type="checkbox"/> NO
FLEET - COVERAGE FOR ALL OWNED AND LICENSED MOTOR VEHICLES	<input type="checkbox"/> YES <input checked="" type="checkbox"/> NO	<input type="checkbox"/> YES <input checked="" type="checkbox"/> NO	<input type="checkbox"/> YES <input type="checkbox"/> NO	<input type="checkbox"/> YES <input checked="" type="checkbox"/> NO

 Signature of Authorized Representative	Off Assistant	6675	12/17/18
Name and Address of Certificate Holder	Title                      Agent's Code Number                      Date		
Jefferson Parish Purchase Department 200 Derbigny Street General Government Building, Suite 4400 Gretna, LA 70053	Name and Address of Agent C MARTINEZ STATE FARM AGENCY 878 S DIXIE HWY STE 100 CORAL GABLES, FL 33146		





## CERTIFICATE OF INSURANCE

SUCH INSURANCE AS RESPECTS THE INTEREST OF THE CERTIFICATE HOLDER NAMED BELOW WILL NOT BE CANCELED OR OTHERWISE TERMINATED WITHOUT GIVING 10 DAYS PRIOR WRITTEN NOTICE TO THE CERTIFICATE HOLDER, BUT IN NO EVENT SHALL THIS CERTIFICATE BE VALID MORE THAN 30 DAYS FROM THE DATE WRITTEN. THIS CERTIFICATE OF INSURANCE DOES NOT CHANGE THE COVERAGE PROVIDED BY ANY POLICY DESCRIBED BELOW.

This certifies that: ☒ STATE FARM MUTUAL AUTOMOBILE INSURANCE COMPANY of Bloomington, Illinois  
☐ STATE FARM FIRE AND CASUALTY COMPANY of Bloomington, Illinois  
☐ STATE FARM COUNTY MUTUAL INSURANCE COMPANY OF TEXAS of Dallas, Texas  
☐ STATE FARM INDEMNITY COMPANY of Bloomington, Illinois, or  
☐ STATE FARM GUARANTY INSURANCE COMPANY of Bloomington, Illinois

has coverage in force for the following Named Insured as shown below:

NAMED INSURED: PEMICA INCORPORATED							
ADDRESS OF NAMED INSURED: 7324 SW 48 STREET, MIAMI, FL 33155-5523							
POLICY NUMBER	G18 2448-C15-59C						
EFFECTIVE DATE OF POLICY	09/15/18-03/15/19						
DESCRIPTION OF VEHICLE (Including VIN)	19 NISSAN SENTRA VIN# 3N1AB7APXKY235388						
LIABILITY COVERAGE	<input checked="" type="checkbox"/> YES <input type="checkbox"/> NO	<input type="checkbox"/> YES <input type="checkbox"/> NO	<input type="checkbox"/> YES <input type="checkbox"/> NO	<input type="checkbox"/> YES <input type="checkbox"/> NO	<input checked="" type="checkbox"/> YES <input type="checkbox"/> NO		
LIMITS OF LIABILITY							
a. Bodily Injury							
Each Person	1,000,000						
Each Accident	1,000,000						
b. Property Damage							
Each Accident	1,000,000						
c. Bodily Injury & Property Damage							
Single Limit							
Each Accident							
PHYSICAL DAMAGE COVERAGES							
a. Comprehensive	<input checked="" type="checkbox"/> YES <input type="checkbox"/> NO	<input type="checkbox"/> YES <input type="checkbox"/> NO	<input type="checkbox"/> YES <input type="checkbox"/> NO	<input type="checkbox"/> YES <input type="checkbox"/> NO	<input type="checkbox"/> YES <input type="checkbox"/> NO		
	\$ 500 Deductible	\$ Deductible	\$ Deductible	\$ Deductible	\$ Deductible		
b. Collision	<input checked="" type="checkbox"/> YES <input type="checkbox"/> NO	<input type="checkbox"/> YES <input type="checkbox"/> NO	<input type="checkbox"/> YES <input type="checkbox"/> NO	<input type="checkbox"/> YES <input type="checkbox"/> NO	<input type="checkbox"/> YES <input type="checkbox"/> NO		
	\$ 500 Deductible	\$ Deductible	\$ Deductible	\$ Deductible	\$ Deductible		
EMPLOYERS NON-OWNED CAR LIABILITY COVERAGE	<input checked="" type="checkbox"/> YES <input type="checkbox"/> NO	<input type="checkbox"/> YES <input type="checkbox"/> NO	<input type="checkbox"/> YES <input type="checkbox"/> NO	<input type="checkbox"/> YES <input type="checkbox"/> NO	<input type="checkbox"/> YES <input type="checkbox"/> NO		
HIRED CAR LIABILITY COVERAGE	<input checked="" type="checkbox"/> YES <input type="checkbox"/> NO	<input type="checkbox"/> YES <input type="checkbox"/> NO	<input type="checkbox"/> YES <input type="checkbox"/> NO	<input type="checkbox"/> YES <input type="checkbox"/> NO	<input type="checkbox"/> YES <input type="checkbox"/> NO		
FLEET - COVERAGE FOR ALL OWNED AND LICENSED MOTOR VEHICLES	<input type="checkbox"/> YES <input checked="" type="checkbox"/> NO	<input type="checkbox"/> YES <input type="checkbox"/> NO	<input type="checkbox"/> YES <input type="checkbox"/> NO	<input type="checkbox"/> YES <input type="checkbox"/> NO	<input type="checkbox"/> YES <input type="checkbox"/> NO		

Signature of Authorized Representative

Off Assistant

6675

12/17/18

Title

Agent's Code Number

Date

Name and Address of Certificate Holder

Name and Address of Agent

Jefferson Parish Purchase Department  
200 Derbigny Street  
General Government Building, Suite 4400  
Gretna, LA 70053

C MARTINEZ STATE FARM AGENCY  
878 S DIXIE HWY STE 100  
CORAL GABLES, FL 33146