

MOBILE MODULAR  
ST. SCOTT, LA

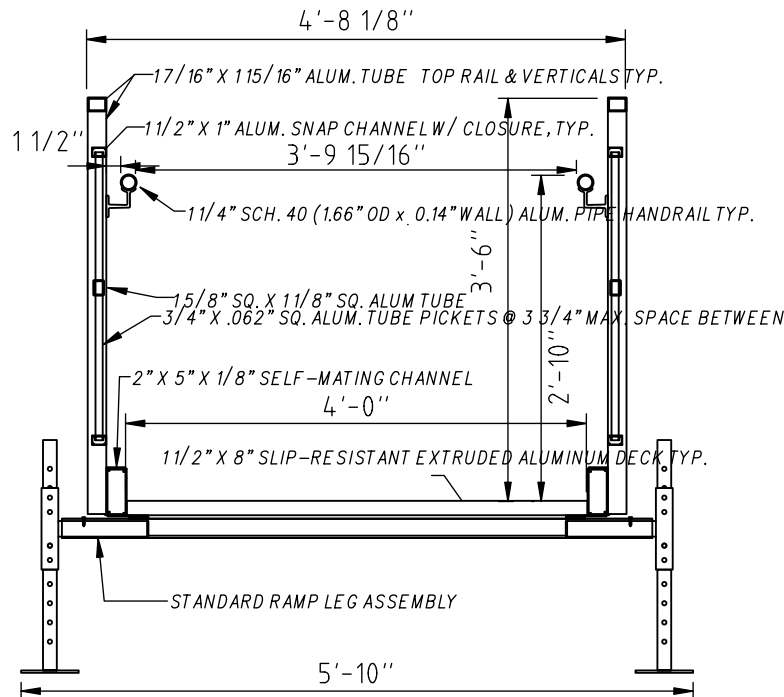
PRODUCT REQUESTED:  
ALUMINUM RAMP SYSTEM  
WITH 42" HIGH VERTICAL PICKET RAILS

5		
4		
3		
2		
1		
REV.	REVIEW DESCRIPTION	DATE

COMPLIANT ACCESS PRODUCTS, LLC  
PO BOX 58203  
CINCINNATI, OHIO 45258

MOBILE MODULAR  
MODULAR FACILITIES  
ST. SCOTT, LA

REVIEWED BY TBA
DATE 11.10.16
DRAWN BY TMR
DRAWN BY TMR
SHEET NO.



SECTION: ALUMINUM RAMP

**GENERAL NOTES:**

1. ALUMINUM RAMP, LANDING AND STAIR SECTIONS SHALL BE A RIGID, FREE-SPAN DESIGN.
2. DESIGN OF THE ALUMINUM STRUCTURES SHALL CONFORM TO THE CURRENT EDITION OF THE ALUMINUM ASSOCIATION SPECIFICATIONS AND GUIDELINES FOR ALUMINUM STRUCTURES.
3. ALL ALUMINUM CONSTRUCTION USING 6000 SERIES ALUMINUM ALLOYS. STRUCTURAL MEMBERS TO 6061-T6, 6063-T5, 6068-T5, 6082-T5, 6105-T5, 6106-T5, 6108-T5.
4. ALUMINUM WILL BE STANDARD MILL FINISH UNLESS OTHERWISE NOTED.
5. WELDING SHALL BE IN ACCORDANCE WITH ANSI/AWS D12.1/D12M-2014 GAS METAL ARC WELDING (GMAW) PROCESS BY EXPERIENCED OPERATORS.
6. ALL STAIRS MUST BE OPEN TOE (SECTION 304) FINISHES, STAIR UNLESS OTHERWISE NOTED.
7. DOWN-DRIFT AND STAIR SECTIONS TO BE 2 INCHES DEEPER FOR A 100 PSF LIVE LOAD.
8. LANDING AND RAMP WALKING SURFACES SHALL BE DESIGNED FOR A MINIMUM CONCENTRATED VERTICAL LOAD OF 300 LBS APPLIED EVENLY OVER A 12" x 12" AREA. STAIR TREADS SHALL BE DESIGNED TO WITHSTAND A MINIMUM CONCENTRATED LOAD OF 300 LBS OVER A SQUARE FOOT.
9. RAMP AND LANDING GUARDRAILS TO BE 42 INCH MINIMUM HEIGHT UNLESS OTHERWISE SPECIFIED. (34 AND 38 INCH TWO-LINE RAMP RAILS AND 34 AND 38 INCH VERTICAL PICKET RAMP RAILS AS WELL AS CUSTOM DESIGN RAMP RAILS AVAILABLE UPON REQUEST FOR SYSTEMS NO MORE THAN 30 INCHES ABOVE FINISHED GROUND LEVEL.
10. HANDRAIL ASSEMBLIES AND GUARDRAILS SHALL BE DESIGNED TO RESIST A LOAD OF 50 PLF APPLIED IN ANY DIRECTION AT THE TOP OF THE RAIL.
11. HANDRAIL ASSEMBLIES AND GUARDRAILS SHALL BE ABLE TO RESIST A SINGLE CONCENTRATED LOAD OF 500 LB IN ANY DIRECTION AT ANY POINT ALONG THE TOP OF THE RAIL. THIS LOAD NEED NOT BE ASSUMED TO ACT CONCURRENTLY WITH THE LOADS SPECIFIED IN THE PRECEDING PARAGRAPH.
12. INTERMEDIATE RAILS (ALL THOSE EXCEPT HANDRAILS), BALUSTERS AND PANEL SYSTEMS SHALL BE DESIGNED TO WITHSTAND AN HORIZONTALLY APPLIED UPRIGHT LOAD OF 50 LBS ONLY IN AN AREA EQUAL TO 1 SQUARE FOOT, INCLUDING OPENINGS AND SPACE BETWEEN RAILS.
13. GUARDRAIL SYSTEMS SHALL BE DESIGNED SO THAT A 4 (FOUR) INCH SPHERE CANNOT PASS THROUGH ANY OPENING.
14. SURFACES SHALL BE A 100% FINISH, RESISTANT, EXTRUDED ALUMINUM DECKING WITH A TRIPLE I-BEAM, SELF-MATING DESIGN.
15. ALL SURFACES, MEMBERS AND THEIR WELDED JOINTS SHALL BE SMOOTH AND FREE FROM SHARP OR JAGGED EDGES.
16. ALL ALUMINUM HEREIN ARE SUBJECT TO CHANGE PENDING FIELD VERIFICATION OF EXISTING CONDITIONS.
17. ALL PRODUCT IS MANUFACTURED BY REDD TEAM, MFG BY SAPA.

**IMPORTANT:**

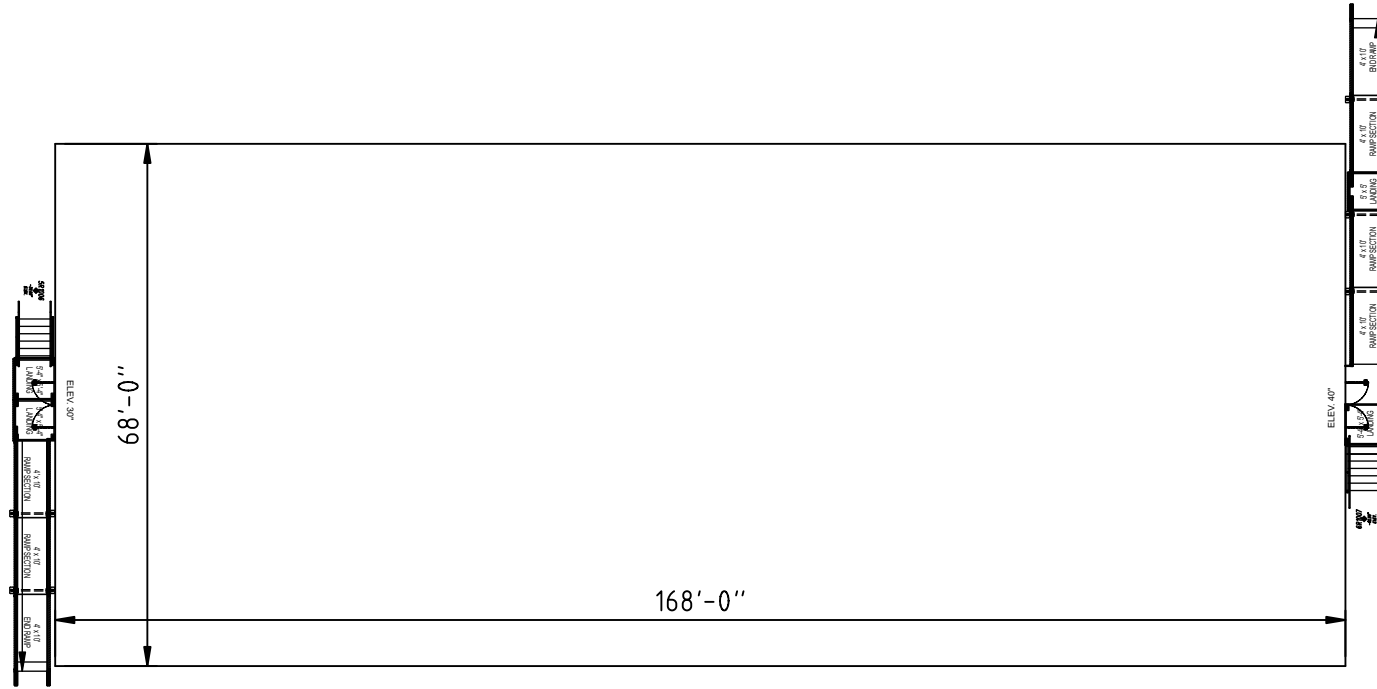
CONTRACTOR / PURCHASER / LEASEE IS RESPONSIBLE FOR VERIFYING THE LAYOUT AS WELL ANY CRITICAL DIMENSIONS & THRESHOLD ELEVATIONS PRIOR TO DELIVERY.

**A SIGNED AND DATED APPROVAL IS REQUIRED BY C.A.P., LLC  
PRIOR TO SCHEDULING / RESERVING AN INSTALLATION DATE.**

BY SIGNING BELOW, I ACKNOWLEDGE THAT I HAVE REVIEWED ALL CRITICAL INFORMATION THAT IS LISTED WITHIN THIS DOCUMENT AND ASSUME RESPONSIBILITY FOR ANY ON SITE VARIANCES.

DATE:

SIGNATURE: \_\_\_\_\_



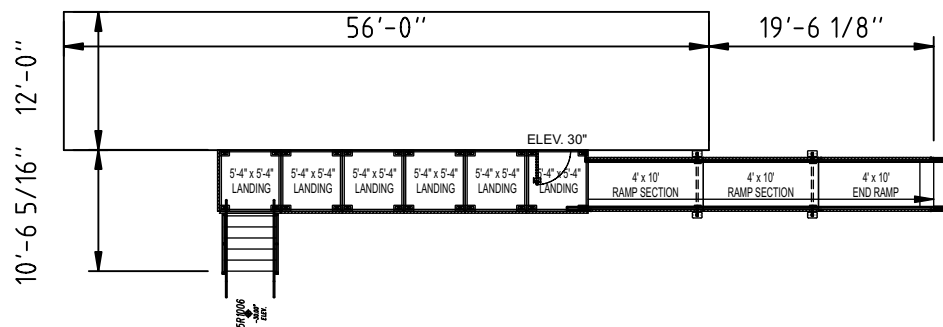
PLAN VIEW: URS ADA ALUMINUM RAMP WITH 42/34"  
VERTICAL PICKET HANDRAILS

REVIEWED BY	TBA
DATE	11.10.16
DRAWN BY	TMR
DRAWN BY	TMR
SHEET NO.	

MOBILE MODULAR  
MODULAR FACILITIES  
ST. SCOTT, LA

COMPLIANT ACCESS PRODUCTS, LLC  
PO BOX 58203  
CINCINNATI, OHIO 45258

5					
4					
3					
2					
1					
	REV.	REVIEW DESCRIPTION	DATE		



PLAN VIEW: URS ADA ALUMINUM RAMP WITH 42/34"  
VERTICAL PICKET HANDRAILS

REVIEWED BY	TBA
DATE	11.10.16
DRAWN BY	TMR
DRAWN BY	TMR
SHEET NO.	

MOBILE MODULAR  
MODULAR FACILITIES  
ST. SCOTT, LA

COMPLIANT ACCESS PRODUCTS, LLC  
PO BOX 58203  
CINCINNATI, OHIO 45258

5					
4					
3					
2					
1					
REV.	REVIEW DESCRIPTION	DATE			