



Pneumatic and Hydraulic Co.  
36374 Hwy 30  
Geismar, LA 70734  
Phone: 225-744-7004

Date: 12/2/2020

Ms. Donna Reamey - Buyer II  
Jefferson Parish Purchasing Department  
200 Derbigny Street, Suite 4400  
Gretna, La. 70053

RE: Bid Number 50 – 132730

Dear Ms. Reamey:

We are submitting our proposal to provide the most current technology and interface with the existing pump installed at the Ames Pump Station at 5100 Rochester Drive, Marrero, LA 70072. On November 23 Pneumatic and Hydraulic Co. surveyed the current installation to get dimensional data to complete a comprehensive response per the criteria outlined in the bid. While on site we were able to get dimensions and can offer the interchange without changes or modifications to pump mounting or electrical wiring. We are confident in the measurements and will remeasure to confirm all the measure if Pneumatic and Hydraulic Co. is the successful bidder. This would be normal practice to confirm all is correct and there are no changes.

Information about the product and pricing can be found on page 14 of the attachment, titled invitation to bid... page 6 and again on page 30 of 30 where you find the PHC quotation standard quotation. The product is manufactured in the USA by Louis Allis, LLC located in Warrior, Alabama. Part of the proposal includes a 5-year warranty subject to LA standard conditions.

We have also verified the item will meet or exceed the conditions outlined by the addendum received from your office on Monday 11/30/20. Also, the new technology eliminates the use of a circulation and lubrication system. The improvement should make it less expense to maintain into the future. If there are any questions, please contact me.

Regards,

Frank Corriere  
Hydraulic Specialist

Cell Phone: 225.229.9177

Email: [frankc@pneumaticandhydraulic.com](mailto:frankc@pneumaticandhydraulic.com)



**CENTRALBIDDING**  
FROM CENTRAL AUCTION HOUSE

**5000132730 ONE TIME PURCHASE OF NEW MEDIUM VOLTAGE, 3 –  
PHASE VERTICAL INDUCTION MOTOR FOR THE JEFFERSON PARISH  
DRAINAGE DEPARTMENT.**

Jefferson Parish Government

Project documents obtained from [www.CentralBidding.com](http://www.CentralBidding.com)

02-Dec-2020 11:28:29 AM



**Bid Number 50 - 132730**

ONE TIME PURCHASE OF NEW MEDIUM VOLTAGE , 3 – PHASE VERTICAL  
INDUCTION MOTOR FOR THE JEFFERSON PARISH DRAINAGE.

**December 03, 2020 AT 2:00 PM**

**ATTENTION VENDORS!!!**

Please review all pages and respond accordingly, complying with all provisions  
in the technical specifications and Jefferson Parish Instructions for Bidders and  
General Terms and Conditions. All bids must be received in the Purchasing  
Department by the bid due date and time.

Jefferson Parish Purchasing Department  
200 Derbigny Street  
General Government Building, Suite 4400  
Gretna, LA 70053  
Donna Reamey  
Dreamey@Jeffparish.net  
504-364-2684

**Jefferson Parish Drainage Pump Motor Procurement Specification**  
**Ames Pump Station**

SECTION 26 29 01.00 10 – ELECTRIC MOTORS, 3-PHASE VERTICAL INDUCTION TYPE

PART 1 - GENERAL

1.1 SCOPE

- A. This section outlines specific information necessary for a vendor to provide a proposal to furnish and deliver one or more drainage pump electric drive motors to Jefferson Parish, for the purpose of present or future motor replacement at a specific Drainage Pumping Station. The replacement motor shall be identical in performance, fit, and function to the motor that will be replaced, including all options and features, such as lubrication, instrumentation, and protection.
- B. Nothing in this specification is intended to supersede the vendor's requirement to visit the site in order to guarantee that the motor proposed by the vendor will operate as a direct replacement to the motor scheduled for removal.
- C. It shall be the responsibility of each vendor to visit the site prior to bid and to obtain any and all site-specific information necessary to guarantee compatibility of the new motor with existing pump, gear, shaft dimensions, case dimensions, weight, power terminations, instrumentation connections, etc., for a direct one-for-one replacement of the existing motor scheduled for removal. Date of site visit shall be included in the vendor's cover letter which will be submitted with the proposal. Specifically, vendor's responsibility shall include, but not be limited to, the following:
  - 1. Document existing shaft dimensions to insure proper mating of new motor to existing pump drive gear.
  - 2. Document existing locations of power connections to confirm that existing motor power feeders will be able to be terminated to new motors without the need to cut or extend existing medium voltage cables.
  - 3. Document existing locations of power connections to power factor correction capacitors to confirm that existing medium voltage cables will be able to be terminated to new motors without the need to cut or extend them.
  - 4. Document motor nameplate information to confirm ratings of proposed motor will match ratings of existing motor.
  - 5. Document specific information regarding the connected instrumentation (pressures, levels, temperatures, etc.) to confirm types and connections for new equipment will match existing.
  - 6. Document method of connection to existing gear box(es), including critical dimensions for bolt placement.
  - 7. Document direction of motor rotation.
- D. The Vendor shall furnish the Owner with a proposal per the following:



**Jefferson Parish Drainage Pump Motor Procurement Specification**  
**Ames Pump Station**

1. Furnish (1) new medium voltage, 3-phase vertical induction motor(s) intended for use in a drainage pump drive application, rated for use in the environment in which it will be installed, and meeting the requirements of this section.
2. Deliver equipment to Owner. Cost of delivery shall be included in the proposal. All deliveries shall be made during normal business hours, between 7:00 a.m. and 3:00 p.m., Monday-Friday, excluding holidays, F.O.B. to the following address:

**Ames Pump Station Warehouse**  
**Jefferson Parish Drainage Dept.**  
**5100 Rochester Drive**  
**Marrero, LA 70072**

3. Furnish all documentation required for equipment approval by Owner prior to manufacture, and as required for installation by a Contractor.

**1.2 SUBMITTALS**

- A. Product Data: Provide complete technical data, including rated capacities, operating characteristics, electrical characteristics, and furnished specialties and accessories.
- B. Shop Drawings: Submit drawings of sufficient size to be easily read. Submit information with English units. Where drawings include schedules, tables, or optional features, annotate which portion of the schedule or table applies, or which optional feature is provided.
  1. Provide dimensioned plans, sections, and elevations (Outline Drawings) of the proposed motor, detailing the locations of all connections. Include weight of equipment and center of gravity.
  2. Include details of equipment assemblies. Indicate dimensions, weights, loads, required clearances, method of field assembly, components, and location and size of each field connection.
  3. Identify fluid drain ports and clearance requirements for proper fluid drain.
  4. Include diagrams for power, signal, and control wiring. Complete schematic, wiring, and interconnection diagrams showing terminal markings and functional relationship between all electrical components.
- C. Submittals due upon delivery of pump motor. Proposals in Section 4.1 are due upon Department request.
- D. Source Quality-Control Test Reports:
  1. Provide documentation indicating that equipment delivered has passed manufacturer testing. Documentation shall clearly indicate what has been tested and that the equipment has passed each test.
  2. Provide test results in a format, including plots, that clearly illustrate that the results match published data and nameplate ratings. Tests shall include, but not be limited to, the following:

**Jefferson Parish Drainage Pump Motor Procurement Specification  
Ames Pump Station**

- a. Standard factory tests.
    - b. Performance tests for speed, torque, power, efficiency, power factor, starting current, and running current.
    - c. Insulation resistance tests.
    - d. Impedance tests.
    - e. Excitation tests.
    - f. Torque-speed tests.
    - g. Temperature rise tests at full and rated service factors.
    - h. Dielectric tests.
    - i. Vibration tests.
  - E. Operation and Maintenance Data: Information shall be specific to the equipment provided.
    - 1. Include Bearing Manufacturer's replacement bearing part numbers (not motor manufacturer's part numbers for the bearings).
    - 2. Include recommended lubricant for motor bearings and required quantity of lubricant.
- 1.3 GUARANTEE
- A. Vendor shall submit with proposal a written guarantee that the motor proposed by the vendor will operate as a direct replacement to the motor scheduled for removal.
- 1.4 WARRANTY
- A. Manufacturer's Warranty: Manufacturer agrees to repair or replace components that fail in materials or workmanship within specified warranty period.
    - 1. Warranty Period: Five years from date of delivery.

**PART 2 - PRODUCTS**

**2.1 GENERAL**

- A. Motor(s) shall be a standard product of a manufacturer regularly engaged in the manufacture of medium voltage, 3-phase, vertical induction type electric motors designed for use in drainage pumping applications.
- B. Torque: Starting torque shall be sufficient to start the pump to which the motor will be connected.
- C. Motors must be designed to accept all up thrust loads imposed by pump during starting and running.

**Jefferson Parish Drainage Pump Motor Procurement Specification**  
**Ames Pump Station**

- D. Motors shall conform to the NEMA Premium Efficiency Electric Motor Program. Motors must meet or exceed the nominal energy efficiency levels listed in NEMA standards publication MG 1-2006, tables 12-12 and 12-13.
- E. Motor(s) shall be suitable for operation outdoors, in direct sunlight, in a damp, semi-tropical environment with sustained exposure to 100% relative humidity, equipped with condensate drain holes with appropriate bug screens.
- F. Motor(s) shall be designed to operate after long periods of idleness without drying out.

**2.2 RATINGS AND MOTOR CHARACTERISTICS**

- A. Motor to Match: Westinghouse Life-Line D Type LAC Induction Motor, Model VSW1, Frame 5810-P30, Style 82F52636, Serial No. 1S-83-09, Installation Instruction Manual IL-3030-D1.
- B. Existing Motor Nameplate Data:
  - 1. General: 800 HP, 4160-volt, 3-phase, 60 Hertz, 1783 RPM, 94 FLA.
  - 2. NEMA KVA Code: E
  - 3. Insulation Class: B
  - 4. Ambient Temperature Rating: 40-degrees Celsius
  - 5. Duty and Service: Continuous Duty with temperature rise of 80-degrees Celsius at 1.15 Service Factor.
  - 6. Power Factor: Not Listed.
  - 7. Space Heaters: 120-volts, 1.9A
- C. Existing Capacitor Nameplate Data: None.

**2.3 NEW MOTOR CONSTRUCTION**

- A. All materials, workmanship, and tests shall be in conformance with current, applicable standards, including ABMA, ASTM, NEMA, ANSI, and IEEE.
- B. All motors shall be built in accordance with latest NEMA, IEEE, ANSI and AFBMA standards where applicable.
- C. Motor(s) shall be squirrel cage induction type.
- D. Motor(s) shall be of the VSS, high thrust, TEFC, coro-duty design, and shall be inverter duty rated with a max temperature rise of 80 degrees Celsius at a 40 degrees Celsius ambient temperature.
- E. Anti-reversing Ratchet: Motor shall include an integral, self-actuated backstop to prevent reverse rotation of the pump due to loss of power at the motor.
- F. Motor(s) shall incorporate stainless steel hardware and refined balance.



**Jefferson Parish Drainage Pump Motor Procurement Specification**  
**Ames Pump Station**

- G. Dimensional Limitations: Shaft size and length, and shaft/motor mounting connection locations, types, and sizes shall match the existing motor to insure proper fit to existing gearbox and/or pump.
  - 1. Motor(s) shall be arranged to permit direct coupling of the motor to existing pump shaft or reduction gear, as applicable.
- H. Bearings: Motor Bearings shall have an average L-10 / B-10 life rating of 100,000 hours in accordance with AFBMA Guidelines for large electric motors used in vertical solid shaft pumping applications requiring lift and thrust.
  - 1. Upper bearing lubrication: oil.
  - 2. Lower bearing lubrication: oil.
- I. Insulation: Non-hydroscopic, bonded together with epoxy resins for long life.
- J. Shaft: High grade steel, treated to mitigate corrosion.

**2.4 MOTOR PROTECTION**

- A. Bearing Oil Temperature Detectors: Provide upper and lower thermowells for maintaining existing bearing oil temperature measurements. Existing instrumentation will be reused.
- B. Winding Heaters: Provide of sufficient capacity and wattage that, when energized, they will hold the temperature of the motor windings approximately 10-degrees Celsius above the ambient temperature. Heaters shall be designed for continuous operation and to withstand at least 10-percent over-voltage continuously. The rate of heat dissipation shall be uniform throughout the effective length of each heater. Pre-wire heaters to an auxiliary power terminal block. Heater terminals shall be water-tight.
  - 1. Voltage: match existing heater voltage.

**2.5 SURGE PROTECTION CAPACITORS**

- A. Each motor shall be furnished with surge protection capacitors mounted inside of the main terminal power connection box attached to the motor frame, to match existing motors.
- B. Current information available is that existing surge capacitors are GE 18L0015WH (field verify).

**2.6 MATERIALS AND FINISHES**

- A. General: The equipment to be procured under this specification will be subjected to severe moisture, high relative humidity, rainfall, high ambient temperatures, and direct sunlight. Materials of construction and finishes shall be designed by the manufacturer with the express purpose of mitigating corrosion under such conditions.

**Jefferson Parish Drainage Pump Motor Procurement Specification**  
**Ames Pump Station**

- B. Finishes: Manufacturer's standard finish over corrosion-resistant pretreatment and compatible primer.

**PART 3 - EXECUTION**

**3.1 DELIVERY**

- A. Equipment shall be delivered to the address noted herein, in packaging to adequately protect the equipment during shipment, handling, and storage. Delivery shall be via an open bed to allow for unloading by overhead crane.
- B. Motor(s) shall be shipped in the vertical position with the rotor blocked inside the stator to prevent damage to the bearings. The motor(s) shall be securely mounted on a skid or pallet of ample size. The skid mounting and boxing shall be done in a manner which will prevent damage to the motor and its accessories during shipment. All power and control terminal boxes shall be shipped completely installed in the final position on each motor housing. Provide suitable bracing for all terminal boxes to prevent damage from vibration during shipment. All small parts and loose materials shall be boxed and included with the equipment.
- C. Equipment that, in the opinion of the Parish, has been damaged during delivery will be rejected and returned to the manufacturer at no cost to the Parish.
- D. Deliver equipment with properly identified information sufficient for distinct identification of what has been shipped.
- E. Deliver equipment with explicit instructions regarding the safe transport and unpacking of the equipment provided. Manufacturer shall provide information and description of eye bolts, slings, other devices, tools and equipment as required in the transport and handling of the delivered motor(s). Failure to provide such instructions at time of equipment delivery shall be cause for rejection of the equipment delivered.
- F. Extended Storage: Motor(s) may be stored for extended periods of time prior to installation. The motor and all auxiliaries and accessories shall be packaged for not less than 24 months of storage, indoors, at the destination. Provide all pertinent maintenance instructions necessary for the equipment to be properly stored by the Parish during this period.
- G. Deliver Test Reports and Operation and Maintenance Data at the same time as the motor(s). Failure to provide reports and / or O&M Data at time of delivery shall be cause for rejection of equipment delivered.



**Jefferson Parish Drainage Pump Motor Procurement Specification**  
**Ames Pump Station**

**PART 4 - PROPOSAL**

4.1 PROPOSAL REQUIREMENTS: Upon Department request you will be required to submit the following information in a timely manner.

A. Proposal shall include the information below.

1. Proposal Cover Letter on company letterhead listing what is included in the proposal and the date the vendor visited the site.
2. Product Data as specified above.
3. Shop Drawings as specified above.
4. Weight of each packaged unit.
5. Bill of material with all optional features listed.
6. Any exceptions or clarifications taken to this specification.
7. Estimated lead time for equipment.
8. Price.
9. Warranty information.
10. Written Guarantee

DATE: 11/17/2020  
BID NO.: 50-00132730

INVITATION TO BID  
THIS IS NOT AN ORDER

Page: 1

## JEFFERSON PARISH

PURCHASING DEPARTMENT  
P.O. BOX 9  
GRETNA, LA. 70054-0009  
504-364-2678

BUYER: DREAMEY@jeffparish.net

BIDS WILL BE RECEIVED ONLINE VIA [WWW.JEFFPARISHBIDS.NET](http://WWW.JEFFPARISHBIDS.NET) UNTIL 2:00 PM, 12/03/2020 AND PUBLICLY OPENED THEREAFTER IN THE WEST BANK PURCHASING DEPT, SUITE 4400, JEFFERSON PARISH GENERAL GOVERNMENT BUILDING, 200 DERBIGNY STREET, GRETNA, LA 70053 AND VIA TELECONFERENCE (DIAL-IN AT (504) 323-1800, MEETING ID: 181357) At no charge, bidders are to submit via Jefferson Parish's electronic procurement page by visiting [www.jeffparishbids.net](http://www.jeffparishbids.net) to register for this free site. Additional instructions are included in the text box highlighting electronic procurement.

LATE BIDS WILL NOT BE ACCEPTED

NOTE: ONLY BIDS WRITTEN IN INK OR TYPEWRITTEN, AND PROPERLY SIGNED BY A MEMBER OF THE FIRM OR AUTHORIZED REPRESENTATIVE, WILL BE ACCEPTED. PENCIL AND/OR PHOTOSTATIC FIGURES OR SIGNATURES SHALL RESULT IN BID REJECTION. HOWEVER, ELECTRONIC SIGNATURES AS DEFINED IN LSA - R.S. 9:2620(8) ARE ACCEPTABLE. SIGNATURE MUST BE A SECURED DIGITAL SIGNATURE.

### INSTRUCTIONS FOR BIDDERS AND GENERAL CONDITIONS

#### THE FOLLOWING INSTRUCTIONS APPLY TO ALL BIDS

All bids submitted are subject to these instructions and general conditions and any special conditions and specifications contained herein, all of which are made part of this bid proposal reference. By submitting a bid, vendor agrees to comply with all provisions of Louisiana Law as well be in compliance with the Jefferson Parish Code of Ordinances, Louisiana Code of Ethics, applicable Jefferson Parish ethical standards and Jefferson Parish Resolution No. 113646 and/or Resolution No. 113647.

Jefferson Parish adheres to the Louisiana Code of Governmental Ethics, contained in Louisiana Revised Statutes Annotated, R.S. 42:1101, et seq. Vendor/Proposer by this submission, warrants that there are no "conflicts of interest" related to this procurement that would violate applicable Louisiana Law. Violation of the Louisiana Code of Governmental Ethics may result in rescission of contract, permit or licenses, and the imposition of fines and/or penalties, without contractual liability to the public in accordance with applicable law.

All vendors submitting bids should register as a Jefferson Parish vendor if not already yet registered. Registration forms may be downloaded from <http://purchasing.jeffparish.net> and by clicking on Vendor Information. Current W-9 forms with respective Tax Identification numbers and vendor applications may be submitted at any time; however, if your company is not registered and/or a current W-9 form is not on file, vendor registration is mandatory. Vendors may experience a delay in payment if your company is not a registered vendor with Jefferson Parish.

All quotations shall be based on F.O.B. Agency warehouse or job site, anywhere within the Parish as designated by the Purchasing Department. This provision does not apply to public works projects

JEFFERSON PARISH requires all products to be new (current) and all work must be performed according to standard practices for the project. Unless otherwise specified, no aftermarket parts will be accepted. Unless otherwise specified, all workmanship and materials must have at least one (1) year guaranty, in writing, from the date of delivery and/or acceptance of the project. Any deviations or alterations from the specifications must be indicated and/or supporting documentation supplied with bid submission.

Bidders should submit all questions in writing via email to the buyer's email address as indicated above, no later than Five (5) working days prior to the bid opening. Bid numbers should be mentioned in all requests. If submitting online, vendors may send questions via the E-Procurement site no later than Five (5) working days prior to the bid opening.

If this bid requires a pre-bid conference (see Additional Requirements section), bidders are advised that such conference will be held to allow bidders the opportunity to identify any discrepancies in the bid specifications and seek further clarification regarding instructions. The Purchasing Department will issue a written response to bidders' questions in the form of an Addendum. Please note that all official communication will be expressed in the form of an addendum.

Visit our website at [HTTP://PURCHASING.JEFFPARISH.NET](http://PURCHASING.JEFFPARISH.NET)



All formal Addenda require written acknowledgement on the bid form by the bidder. Failure to acknowledge an Addendum on the bid form shall cause the bid to be rejected. JEFFERSON PARISH reserves the right to award bid to next lowest responsive and responsible bidder in this event.

JEFFERSON PARISH will accept one price for each item unless otherwise indicated. Two or more prices for one item will result in bid rejection. Bidders are required to complete, sign and return the bid form and/or complete and return the associated line item pricing forms as indicated. Vendors must not alter the bid forms. Doing so will cause the bid to be rejected.

A corporate resolution or written evidence of the individual signing the bid having such authority must be submitted with the bid. Failure to comply will cause bid to be rejected. For corporate entities, such written evidence may be a printout of the Louisiana Secretary of State's website listing the signatory as an officer. Such printout shall be included with the bid submission. Bids submitted by Owners or Sole Proprietorships must include certification that he or she owns the entity for which the bid is signed. This documentation must be submitted with the bid. Failure to do so will result in bid rejection.

NOTE: A sample corporate resolution can be downloaded from our website <http://purchasing.jeffparish.net> or you may provide your own document. A sample certification of sole proprietorship can also be downloaded from our website <http://purchasing.jeffparish.net> or you may provide your own document.

### INSTRUCTIONS FOR BIDDERS AND GENERAL CONDITIONS

**A. AWARD OF CONTRACT:** JEFFERSON PARISH reserves the right to award contracts or place orders on a lump sum or individual item basis, or such combination, as shall in its judgment be in the best interest of JEFFERSON PARISH. Every contract or order shall be awarded to the LOWEST RESPONSIVE and RESPONSIBLE BIDDER, taking into consideration the CONFORMITY WITH THE SPECIFICATIONS and the DELIVERY AND/OR COMPLETION DATE. SPLIT AWARDS MADE TO SEVERAL VENDORS WILL ONLY BE GRANTED TO THOSE DEEMED RESPONSIVE AND RESPONSIBLE.

All bid prices shall remain valid for 45 days. Jefferson Parish and the lowest responsive and responsible bidder(s) by mutual written consent may mutually agree to extend the deadline for award by one (1) or more extensions of thirty (30) calendar days.

**PROTESTS:** Only those vendors that submit bids in response to this solicitation may protest any element of the procurement, in writing to the Director of the Purchasing Department. Written protest must be received within 48 hours of the release of the bid tabulation by the Purchasing Department. After consultation, the Parish Attorney's Office will then respond to protests in writing. (For more information, please see Chapter 2, Article VII, Division 2, Sec. 2-914.1 of the Jefferson Parish Code of Ordinances.)

**PREFERENCE:** Unless federal funding is directly spent by Jefferson Parish for this purchase, preference is hereby given to materials, supplies, and provisions produced, manufactured or grown in Louisiana, quality being equal to articles offered by competitors outside the state. "LSA - R.S. 38:2251-2261"

**B. USE OF BRAND NAMES AND STOCK NUMBERS:** Where brand names and stock numbers are specified, it is for the purpose of establishing certain minimum standards of quality. Bids may be submitted for products of equal quality, provided brand names and stock numbers are specified. Complete product data may be required prior to award.

**C. CANCELLATION OF CONTRACT:** JEFFERSON PARISH reserves the right to cancel all or any part if not shipped promptly. No charges will be allowed for parking or cartage unless specified in quotation. The order must not be filled at a higher price than quoted. JEFFERSON PARISH reserves the right to cancel any contract at anytime and for any reason by issuing a THIRTY (30) day written notice to the contractor.

For good cause and as consideration for executing a contract with Jefferson Parish, vendor conveys, sells, assigns, and transfers to Jefferson Parish or its assigns all rights, title and interest in and to all causes of action it may now or hereafter acquire under the antitrust laws of the United States and the State of Louisiana, relating to the particular good or services purchased or acquired by Jefferson Parish.

**D. PRICES:** Jefferson Parish is exempt from paying sales tax under LSA-R.S. 47:301 (8)(c). All prices for purchases by Jefferson Parish of supplies and materials shall be quoted in the unit of measure specified and unless otherwise specified, shall be exclusive of state and local taxes. For purchases of labor and materials, the Contractor shall not pay any state or local sales or use taxes on materials and equipment which are affixed and made part of the immovable property of the project or which permanently incorporated in the project (hereinafter referred to as "applicable materials and equipment"). All purchases of applicable materials or equipment shall be made by the contractor on behalf of and as the agent of Jefferson Parish (Owner), a political subdivision of the State of Louisiana. No state and local sales and use taxes are owned on applicable materials and equipment under the provisions of Act 1029 of the 1991 Regular Session - Louisiana Revised Statute 47:301(8)(c). Owner will furnish contractor a certificate form which certifies that Owner is not required to pay such state or local sales and use taxes, and contractor shall furnish a copy of such certificate to all vendors or suppliers of the applicable materials and equipment. The price quoted for work shall be stated in figures. In the event there is a difference in unit prices and totals, the unit price shall prevail.

Quantities listed are for bidding purposes only. Actual requirements may be more or less than quantities listed.

Bidders are not to exclude from participation in, deny the benefits of, or subject to discrimination under any program or activity, any person in the United States on the grounds of race, color, national origin, or sex; nor discriminate on the basis of age under the Age Discrimination Act of 1975, or with respect to an otherwise qualified handicapped individual as provided in Section 504 of the Rehabilitation Act of 1973, or on the basis of religion, except that any exemption from such prohibition against discrimination on the basis of religion as provided in the Civil Rights Act of 1964, or Title VI and VII of the Act of April 11, 1968, shall also apply. This assurance includes compliance with the administrative requirements of the Revenue Sharing final handicapped discrimination provisions contained in Section 51.55 (c), (d), (e), and (k)(5) of the Regulations. New construction or renovation projects must comply with Section 504 of the 1973 Rehabilitation Act, as amended, in accordance with the American National Standard Institute's specifications (ANSI A17.1-1961).



**INSTRUCTIONS FOR BIDDERS AND GENERAL CONDITIONS**

Jefferson Parish and its partners as the recipients of federal funds are fully committed to awarding a contract(s) to firm(s) that will provide high quality services and that are dedicated to diversity and to containing costs. Thus, Jefferson Parish strongly encourages the involvement of minority and/or woman-owned business enterprises (DBE's, including MBE's, WBE's and SBE's) to stimulate participation in procurement and assistance programs.

The purpose and intention of this invitation to bid is to afford all suppliers an equal opportunity to bid on all construction, maintenance, repair, operating supplies and/or equipment listed in this bid proposal. JEFFERSON PARISH WILL ACCEPT ONE BID ONLY FROM EACH VENDOR. Items bid must meet specifications.

Advertised bids will be tabulated and a copy of the tabulation will be forwarded to each responding bidder.

**IN ACCORDANCE WITH STATE REGULATIONS JEFFERSON PARISH OFFERS ELECTRONIC PROCUREMENT TO ALL VENDORS**

This electronic procurement system allows vendors the convenience of reviewing and submitting bids online.

This is a secure site and authorized personnel have limited read access only. Bidders are to submit electronically using this free service; while the website accepts various file types, one single PDF file containing all appropriate and required bid documents is preferred. Bidders submitting uploaded images of bid responses are solely responsible for clarity. If uploaded images/documents are not legible, then bidder's submission will be rejected. Please note all requirements contained in this bid package for electronic bid submission.

Please visit our E-Procurement Page at [www.jeffparishbids.net](http://www.jeffparishbids.net) to register and view Jefferson Parish solicitations. For more information, please visit the Purchasing Department page at <http://purchasing.jeffparish.net>.

The general specifications for construction projects and the purchase of materials, services and/or supplies are those adopted by the JEFFERSON PARISH Council by Resolution No. 113646 or 113647 as amended. The general conditions adopted by this resolution shall be considered as much a part of this document as if they were written wholly herein. A copy may be obtained from the Office of the Parish Clerk, Suite 6700, Jefferson Parish General Government Building, 200 Derbigny Street, Gretna, LA 70053. You may also obtain a copy by visiting the Purchasing Department webpage at <http://purchasing.jeffparish.net> and clicking on Online Forms.

**ADDITIONAL REQUIREMENTS FOR THIS BID**

PLEASE MATCH THE NUMBERS PRINTED IN THIS BOX WITH THE CORRESPONDING INSTRUCTIONS BELOW.

13 ,15

1. All bidders must attend the MANDATORY pre-bid conference and will be required to sign in and out as evidence of attendance. In accordance with LSA R.S. 38:2212(I), all prospective bidders shall be present at the beginning of the MANDATORY pre-bid conference and shall remain in attendance for the duration of the conference. Any prospective bidder who fails to attend the conference or remain for the duration shall be prohibited from submitting a bid for the project.
2. Attendance to this pre-bid conference is optional. However, failure to attend the pre-bid conference shall not relieve the bidder of responsibility for information discussed at the conference. Furthermore, failure to attend the pre-bid conference and inspection does not relieve the successful bidder from the necessity of furnishing materials or performing any work that may be required to complete the work in accordance with the specification with no additional cost to the owner.
3. Contractor must hold current applicable JEFFERSON PARISH licenses with the Department of Inspection and Code Enforcement. Contractor shall obtain any and all permits required by the JEFFERSON PARISH Department of Inspection and Code Enforcement. The contractor shall be responsible for the payment of these permits. All permits must be obtained prior to the start of the project. Contractor must also hold any and all applicable Federal and State licenses. Contractor shall be responsible for the payment of these permits and shall obtain them prior to the start of the project.
4. A LA State Contractor's License will be required in accordance with LSA R.S. 37-2150 et. seq. and such license number will be shown on the outside of the bid electronic envelope. Failure to comply will cause the bid to be rejected. When submitting the bid electronically, the license number must be entered in the appropriate field in the electronic procurement system. Failure to comply will cause the bid to be rejected.



**INSTRUCTIONS FOR BIDDERS AND GENERAL CONDITIONS**

5. It is the bidder's responsibility to visit the job site and evaluate the job before submitting a bid.
6. Job site must be clean and free of all litter and debris daily and upon completion of the contract. Passageways must be kept clean and free of material, equipment, and debris at all times. Flammable material must be removed from the job site daily because storage will not be permitted on the premises. Precaution must be exercised at all times to safeguard the welfare of JEFFERSON PARISH and the general public.
7. **PUBLIC WORKS BIDS:** All awards for public works in excess of \$5,000.00 will be reduced to a formal contract which shall be recorded at the contractor's expense with the Clerk of Court and Ex-Officio Recorder of Mortgages for the Parish of Jefferson. A price list of recordation costs may be obtained from the Clerk of Court and Ex-Officio Recorder of Mortgages for the Parish of Jefferson. All awards in excess of \$25,000.00 will require both a performance and a payment bond. Unless otherwise stated in the bid specifications, the performance bond requirements shall be 100% of the contract price. Unless otherwise state in the bid specifications, the payment bond requirements shall be 100% of the contract price. Both bonds shall be supplied at the signing of the contract.
8. **NON-PUBLIC WORKS BIDS:** A performance bond will be required for this bid. The amount of the bond will be 100% of the contract price unless otherwise indicated in the specifications. The performance bond shall be supplied at the signing of the contract.
9. **NON-PUBLIC WORKS BIDS:** A payment bond will be required for this bid. The amount of the bond will be 100% of the contract price unless otherwise indicated in the specifications. The payment bond shall be supplied at the signing of the contract.
10. All bidders must comply with the requirements stated in the attached "Standard Insurance Requirements" sheet attached to this bid solicitation. Failure to comply with this instruction will result in bid rejection.
11. A bid bond will be required with bid submission in the amount of 5% of the total bid, unless otherwise stated in the bid specifications. All sureties must be in original format (no copies) When submitting a bid online, vendors must submit an electronic bid bond through the respective online clearinghouse bond management system(s) as indicated in the electronic bid solicitation on Central Auction House. No scanned paper copies of any bid bond will be accepted as part of the electronic bid submission.
12. This is a requirements contract to be provided on an as needed basis. JEFFERSON PARISH makes no representations on warranties with regard to minimum guaranteed quantities unless otherwise stated in the bid specifications.
13. Freight charges should be included in total cost when quoting. If not quoted FOB DELIVERED, freight must be quoted as a separate item. Bid may be rejected if not quoted FOB DELIVERED or if freight charges are not indicated on bid form.
14. **PUBLIC WORKS BIDS - Completed, Signed and Properly Notarized Affidavits Required;** This applies to all solicitations for construction, alteration or demolition of public buildings or projects, in conformity with the provisions contained in LSA-RS 38:2212.9, LSA-RS 38:2212.10, LSA-RS 38:2224, and Sec 2-923.1 of the Jefferson Parish Code of Ordinances. For bidding purposes, all bidders must submit with bid submission COMPLETED, SIGNED and PROPERLY NOTARIZED Affidavits, including: Non-Collusion Affidavit, Non-Collusion Affidavit, Campaign Contribution Affidavit, Debt Disclosures Affidavit and E-Verify Affidavit. For the convenience of vendors, all affidavits have been combined into one form entitled PUBLIC WORKS BID AFFIDAVIT. This affidavit must be submitted in its original format, and without material alteration, in order to be compliant and for the bid to be considered responsive. A scanned copy of the completed, signed and properly notarized affidavit may be submitted with the bid, however, the successful bidder must submit the original affidavit in its original format and without material alteration upon contract execution. Failure to comply will result in the bid submission being rejected as non-responsive. The Parish reserves the right to award bid to the next lowest responsive and responsible bidder in this event.
15. **NON PUBLIC WORK BIDS - Completed, Signed and Properly Notarized Affidavits Required** in conformity with the provisions contained in LSA - RS 38:2224 and Sec 2-923.1 of the Jefferson Parish Code of Ordinances. For bidding purposes, all bidders must submit with bid submission COMPLETED, SIGNED and PROPERLY NOTARIZED Affidavits, including: Non-Collusion Affidavit, Debt Disclosures Affidavit and Campaign Contribution Affidavit. For the convenience of vendors, all affidavits have been combined into one form entitled NON PUBLIC WORKS BID AFFIDAVIT. This affidavit must be submitted in its original format, and without material alteration, in order to be compliant and for the bid to be considered responsive. A scanned copy of the completed, signed and properly notarized affidavit may be submitted with the bid, however, the successful bidder must submit the original affidavit in its original format and without material alteration upon contract execution. Failure to comply will result in the bid submission being rejected as non-responsive. The Parish reserves the right to award bid to the next lowest responsive and responsible bidder in this event.
16. The ensuing contract for this bid solicitation may be eligible for FEMA reimbursement and/or Federal funding/reimbursement. As such, the referenced appendix will be applicable accordingly and shall be considered a part of the bid documents. All applicable certifications must be duly completed, signed and submitted with bid submission. Failure to submit applicable certifications with bid submission will result in bid rejection.

It shall be the duty of every parish officer, employee, department, agency, special district, board, and commission: and the duty of every contractor, subcontractor, and licensee of the parish, and the duty of every applicant for certification of eligibility for a parish contract or program, to cooperate with the Inspector General in any investigation, audit, inspection, performance review, or hearing pursuant to JPCO 2-155.10(19). By signing this document, every corporation, partnership, or person contracting with PARISH, whether by cooperative endeavor, intergovernmental agreement, bid, proposal, application or solicitation for a parish contract, and every application for certification of eligibility for a parish contract or program, attests that it understands and will abide by all provisions of JPCO 2-155.10.

See Page 1 for Conflicts of Interest Statement



## INVITATION TO BID FROM JEFFERSON PARISH - continued

BID NO.: 50-00132730

SEALED BID

ITEM NUMBER	QUANTITY	U/M	DESCRIPTION OF ARTICLES	UNIT PRICE QUOTED	TOTALS
1	1.00	EA	<p>ONE TIME PURCHASE OF NEW MEDIUM VOLTAGE 3 - PHASE VERTICAL INDUCTION MOTOR FOR THE JEFFERSON PARISH DRAINAGE.</p> <p>0001 - Material Purchase Only of one (1) new medium voltage, 3-phase vertical induction motor intended for use in a drainage pump drive application, rated for use in the environment in which it will be installed by Parish. Must meet attached specifications.</p> <p>Delivery Location: Ames PS Warehouse 5100 Rochester Drive Marrero, LA 70072</p> <p>N80045012VPAMVCOG5B5N01 NEW LOUIS ALLIS PREMIUM EFFICIENT VERTICAL SOLID SHAFT INDUCTION MOTOR RATED: 800 HP, 1800 RPM, FRAME 5012ZVPA-30, TO BE DROP IN REPLACEMENT FOR WESTINGHOUSE 5810-P30 MATCHING ALL CRITICAL MOUNTING DIMENSIONS, VOLT 4160, 3 PHASE, 60 HERTZ, SERVICE FACTOR 1.15, NEMA DESIGN B, CLASS F INSULATION. 30,900 lbs. Down Thrust.</p> <p>INCLUDES: LIGHTING AND SURGE PROTECTION, 175%</p> <p>EXTRA HIGH THRUST, 100 OHM'S WINDING RTD'S.</p> <p>LEAD TIME: 12 WEEKS ARO</p> <p>WARRANTY FIVE YEARS</p>	164,041.10	164,041.10

DATE: 11/17/2020

Page: 5

BID NO.: 50-00132730

**BID FORM**  
Non Public Works

All Public Work Projects are required to use the Louisiana Uniform Public Work Bid Form

All prices must be held firm unless an escalation provision is requested in this bid. Jefferson Parish will allow one escalation during the term of the contract, which may not exceed the U.S. Bureau of Labor Statistics National Index for all Urban Consumers, unadjusted 12 month figure. The most recently published figure issued at the time an adjustment is requested will be used. A request must be made in writing by the vendor, and the escalation will only be applied to purchases made after the request is made.

Are you requesting an escalation provision?

YES \_\_\_\_\_ NO ✓

MAXIMUM ESCALATION PERCENTAGE REQUESTED \_\_\_\_\_ %

INITIAL BID PRICES WILL REMAIN FIRM THROUGH THE DATE OF 1/3/21

For the purposes of comparison of bids when an escalation provision is requested, Jefferson Parish will apply the maximum escalation percentage quoted by the bidder to the period to which it is applied in the bid. The initial price and the escalation will be used to calculate the total bid price. It will be assumed, for comparison of prices only, that an equal amount of material or labor is purchased each month throughout the entire contract.

**DELIVERY: FOB JEFFERSON PARISH**

INDICATE DELIVERY DATE ON EQUIPMENT AND SUPPLIES

12 weeks after award.

LOUISIANA CONTRACTOR'S LICENSE NO.: (if applicable)

N/A

**THIS SECTION MUST BE COMPLETED BY BIDDER:**

FIRM NAME: Pneumatic and Hydraulic

ADDRESS: 1338 Petroleum Pkwy

CITY, STATE: Broussard LA ZIP: 70518

TELEPHONE: 337 839 1999 FAX: ( )

EMAIL ADDRESS: frank C@pneumaticandhydraulic.com

In the event that addenda are issued with this bid, bidders MUST acknowledge all addenda on the bid form. Bidder must acknowledge receipt of an addendum on the bid form by placing the addendum number as indicated. Failure to acknowledge any addendum on the bid form will result in bid rejection.

Acknowledge Receipt of Addenda: NUMBER: 1

NUMBER: \_\_\_\_\_

NUMBER: \_\_\_\_\_

NUMBER: \_\_\_\_\_

TOTAL PRICE OF ALL BID ITEMS: \$ 164041.10

AUTHORIZED SIGNATURE: Bret Adams

TITLE: Co-Owner

BRET ADAMS  
Printed Name

SIGNING INDICATES YOU HAVE READ AND COMPLY WITH THE INSTRUCTIONS AND CONDITIONS.

NOTE: All bids should be returned with the BID NUMBER and BID OPENING DATE indicated on the outside of the envelope submitted to the Purchasing Department.

Non-Public Works Bid

AFFIDAVIT

STATE OF

Louisiana

PARISH/COUNTY OF

Lafayette

BEFORE ME, the undersigned authority, personally came and appeared: Bret

Adams

, (Affiant) who after being by me duly sworn, deposed and said that he/she is the fully authorized officer of Pneumatic and Hydraulic (Entity), the party who submitted a bid in response to Bid Number 80-132730, to the Parish of Jefferson.

Affiant further said:

Campaign Contribution Disclosures

(Choose A or B, if option A is indicated please include the required attachment):

Choice A \_\_\_\_\_

Attached hereto is a list of all campaign contributions, including the date and amount of each contribution, made to current or former elected officials of the Parish of Jefferson by Entity, Affiant, and/or officers, directors and owners, including employees, owning 25% or more of the Entity during the two-year period immediately preceding the date of this affidavit or the current term of the elected official, whichever is greater. Further, Entity, Affiant, and/or Entity Owners have not made any contributions to or in support of current or former members of the Jefferson Parish Council or the Jefferson Parish President through or in the name of another person or legal entity, either directly or indirectly.

Choice B ☒

there are NO campaign contributions made which would require disclosure under Choice A of this section.

Debt Disclosures

(Choose A or B, if option A is indicated please include the required attachment):

Choice A \_\_\_\_\_ Attached hereto is a list of all debts owed by the affiant to any elected or appointed official of the Parish of Jefferson, and any and all debts owed by any elected or appointed official of the Parish to the Affiant.

Choice B ✓ \_\_\_\_\_ There are NO debts which would require disclosure under Choice A of this section.

Affiant further said:

That Affiant has employed no person, corporation, firm, association, or other organization, either directly or indirectly, to secure the public contract under which he received payment, other than persons regularly employed by the Affiant whose services in connection with the construction, alteration or demolition of the public building or project or in securing the public contract were in the regular course of their duties for Affiant; and

*[The remainder of this page is intentionally left blank.]*



That no part of the contract price received by Affiant was paid or will be paid to any person, corporation, firm, association, or other organization for soliciting the contract, other than the payment of their normal compensation to persons regularly employed by the Affiant whose services in connection with the construction, alteration or demolition of the public building or project were in the regular course of their duties for Affiant.

Bret Adams  
Signature of Affiant

BRET ADAMS  
Printed Name of Affiant

SWORN AND SUBSCRIBED TO BEFORE ME  
ON THE 2<sup>ND</sup> DAY OF December, 2010.

Melany Landreneau Vidrine  
Notary Public

Melany Landreneau Vidrine  
Printed Name of Notary

NP #10905  
Notary/Bar Roll Number

My commission expires at my death



## CORPORATE RESOLUTION

EXCERPT FROM MINUTES OF MEETING OF THE BOARD OF DIRECTORS OF  
Pneumatic and Hydraulic  
INCORPORATED.

AT THE MEETING OF DIRECTORS OF Pneumatic and Hydraulic  
INCORPORATED, DULY NOTICED AND HELD ON December 1<sup>st</sup>, 2020  
A QUORUM BEING THERE PRESENT, ON MOTION DULY MADE AND SECONDED. IT  
WAS:

RESOLVED THAT Brett Adams, BE AND IS HEREBY  
APPOINTED, CONSTITUTED AND DESIGNATED AS AGENT AND ATTORNEY-IN-  
FACT OF THE CORPORATION WITH FULL POWER AND AUTHORITY TO ACT ON  
BEHALF OF THIS CORPORATION IN ALL NEGOTIATIONS, BIDDING, CONCERNS  
AND TRANSACTIONS WITH THE PARISH OF JEFFERSON OR ANY OF ITS AGENCIES,  
DEPARTMENTS, EMPLOYEES OR AGENTS, INCLUDING BUT NOT LIMITED TO, THE  
EXECUTION OF ALL BIDS, PAPERS, DOCUMENTS, AFFIDAVITS, BONDS, SURETIES,  
CONTRACTS AND ACTS AND TO RECEIVE ALL PURCHASE ORDERS AND NOTICES  
ISSUED PURSUANT TO THE PROVISIONS OF ANY SUCH BID OR CONTRACT, THIS  
CORPORATION HEREBY RATIFYING, APPROVING, CONFIRMING, AND ACCEPTING  
EACH AND EVERY SUCH ACT PERFORMED BY SAID AGENT AND ATTORNEY-IN-  
FACT.

I HEREBY CERTIFY THE FOREGOING TO BE  
A TRUE AND CORRECT COPY OF AN  
EXCERPT OF THE MINUTES OF THE ABOVE  
DATED MEETING OF THE BOARD OF  
DIRECTORS OF SAID CORPORATION, AND  
THE SAME HAS NOT BEEN REVOKED OR  
RESCINDED.

Ann Nabors

SECRETARY-TREASURER

12-2-20

DATE

## **Non-Public Works Bid Affidavit Instructions**

- Affidavit is supplied as a courtesy to Affiants, but it is the responsibility of the affiant to insure the affidavit they submit to Jefferson Parish complies, in both form and content, with federal, state and parish laws.
- Affidavit must be signed by an authorized representative of the entity or the affidavit will not be accepted.
- Affidavit must be notarized or the affidavit will not be accepted.
- Notary must sign name, print name, and include bar/notary number, or the affidavit will not be accepted.
- Affiant **MUST** select either A or B when required or the affidavit will not be accepted.
- Affiants who select choice A must include an attachment or the affidavit will not be accepted.
- If both choice A and B are selected, the affidavit will not be accepted.
- Affidavit marked N/A will not be accepted.
- It is the responsibility of the Affiant to submit a new affidavit if any additional campaign contributions are made after the affidavit is executed but prior to the time the council acts on the matter.

*Instruction sheet may be omitted when submitting the affidavit*



# JEFFERSON PARISH

## DEPARTMENT OF PURCHASING

CYNTHIA LEE SHENG  
PARISH PRESIDENT

RENNY SIMNO  
DIRECTOR

September 2020

### **Changes to Jefferson Parish Bidding Information**

The Jefferson Parish Purchasing Department would like to make vendors aware of the following changes:

**Total Bid Price Must Include the Cost of Naming Jefferson Parish as Additional Insured:**

Bidder acknowledges that Bidder recovered the cost of any required insurance in the contract price as required by La.R.S. 9:2780.1 and that Bidder recovered any such cost for the purposes of insuring an obligation to indemnify Jefferson Parish, defend Jefferson Parish, or hold Jefferson Parish harmless and that Bidder's indemnity liability is limited to the amount of the proceeds that are payable under the insurance policy or policies that Bidder has obtained.

**Electronic Procurement:** Beginning November 1, 2020, Jefferson Parish will no longer accept manual bid submissions; and will only accept bid submissions electronically via our e-Procurement system, Central Bidding. Central Bidding can be accessed by visiting either [www.centralbidding.com](http://www.centralbidding.com) or [www.jeffparishbids.net](http://www.jeffparishbids.net). All bidders will be required to register with Central Bidding. Jefferson Parish vendors are able to register for free by accessing the following link:  
<https://www.centrauctionhouse.com/registration.php>.

**Probable Construction Cost:** Per Jefferson Parish Administrative Policy, the probable construction cost is not revealed in the Jefferson Parish Bidding Documents. Jefferson Parish Administrative Policy has changed and a range of the probable construction cost will be stated in the Jefferson Parish bidding document, entitled Important Notice to All Bidders – Bid Requirements. Per Louisiana Public Bid Law, the probable construction cost will be read at the bid opening.

**Insurance Requirement:** All bidders must provide proof of valid insurance in the required amounts as stated in the Standard Insurance Requirements for bidding purposes. Failure to provide the proof of valid insurance in all of the required coverage amounts will result in bid rejection.

GENERAL GOVERNMENT BLDG. – 200 DERBIGNY ST., SUITE 4400, GRETN, LA 70053  
OFFICE 504.364.2678

JOSEPH S. YENNI BLDG. – 1221 ELMWOOD PARK BLVD., SUITE 404, JEFFERSON, LA 70123  
OFFICE 504.364.2678

EMAIL: [PURCHASING@JEFFPARISH.NET](mailto:PURCHASING@JEFFPARISH.NET) WEBSITE: [WWW.JEFFPARISH.NET](http://WWW.JEFFPARISH.NET)





# JEFFERSON PARISH

## DEPARTMENT OF PURCHASING

CYNTHIA LEE SHENG  
PARISH PRESIDENT

RENNY SIMNO  
DIRECTOR

*November 30, 2020*

### ADDENDUM # 1

**Bid Number:50-132730**

**Bid Opening Date: December 3, 2020**

**Description of Bid: One time purchase of new medium voltage 3-phase vertical induction motor for the Jefferson Parish Drainage.**

---

#### Answer vendor questions:

1). Drawing of the existing Westinghouse motor.

Answer: We do not have the original drawings for this unit.

2). If the end user doesn't have the drawing on existing motor we need to know the BCD (Bolt Circle Diameter), Bolt Hole dimension, I.D. & O.D. of Spigot Area on Drive End side of the motor to be assembled with the pump. Without this information, we CAN'T quote the drop-in replacement of the existing motor.

Answer: It will be up to the bidding vendor to determine BCD (Bolt Circle Diameter), Bolt Hole dimension, I.D. & O.D. of Spigot Area on Drive End side of the motor for a direct field replacement.

3). **Nameplate Photo** on the existing Westinghouse motor.

Answer: See attached photos.

4). Thrust Values

a) Rated Down-Thrust

Answer: 30,000 LBS.

b) Max. Momentary Down-Thrust

Answer: 40,000 LBS

c) Max. Momentary Up-Thrust

Answer: Vendor shall be responsible for determining up-thrust to comply with all other specifications.

5). Type of Enclosure: According to the end user's Bid Document, it shows as TEFC but it needs to be confirmed again.

Answer: TEFC is correct.

GENERAL GOVERNMENT BLDG. — 200 DERBIGNY ST., SUITE 4400, GRETN, LA 70053  
OFFICE 504.364.2678

JOSEPH S. YENNI BLDG. — 1221 ELMWOOD PARK BLVD., SUITE 404, JEFFERSON, LA 70123  
OFFICE 504.364.2678

EMAIL: PURCHASING@JEFFPARISH.NET WEBSITE: WWW.JEFFPARISH.NET

Sincerely,

Donna Reamey

Donna Reamey  
Buyer II

**Bidders must acknowledge all addenda on the bid form. Bidder acknowledges receipt of this addendum on the bid form by indicating the addendum number listed above. Failure to list each addenda number on the bid form will result in bid rejection.**

This addendum is a part of the contract documents and modifies the original bidding documents and specifications. The contents of this addendum shall be included in the contract documents. Changes made by this addendum shall take precedence over the documents of earlier date.

GENERAL GOVERNMENT BLDG. — 200 DERBIGNY ST., SUITE 4400, GRETN, LA 70053  
OFFICE 504.364.2678

JOSEPH S. YENNI BLDG. — 1221 ELMWOOD PARK BLVD., SUITE 404, JEFFERSON, LA 70123  
OFFICE 504.364.2678  
EMAIL: [PURCHASING@JEFFPARISH.NET](mailto:PURCHASING@JEFFPARISH.NET) WEBSITE: [WWW.JEFFPARISH.NET](http://WWW.JEFFPARISH.NET)



# PHILADELPHIA

THIS UNIT MUST BE INSTALLED AND OPERATED IN ACCORDANCE WITH CURRENT INSTRUCTION MANUALS AND OSHA STANDARDS. ALWAYS MAINTAIN OIL TO INDICATED OIL LEVEL WITH LUBRICANT.



275K/VP1  
134749  
422621

INPUT R.P.M. 1800  
RATIO 5.57-1  
OUTPUT R.P.M. 274

800  
SERVICE FACTOR 1.5  
OUT-PUT TORQUE



EXCESSIVE WITHOUT  
EXTERNAL DOWN THRUST

# Westinghouse



Life-Line D

Type LAC Induction Motor

HP	800	MODEL		VSW1	FRAME	5810-P30
POLES	4	3	PHASE	60 CPS	VOLTS	4160
RPM	1783	LOCKED KVA CODE		E	INS CLASS	B
TIME		CONT. 80°C RISE AT 1.15 SERVICE FACTOR		CAUTION: BEFORE INSTALLING OR OPERATING READ INSTRUCTIONS		
VOLTS		AMPS		IL. - 3030-D1		
				AMBIENT 40°C		

USER'S NO.

SERIAL 1S-83-09

STYLE 82F52636

199P068H01A

Westinghouse Electric Corporation

MADE IN U.S.A.

W  
1. INSTALLATION OF AND  
PERFORMED ONLY BY TECH  
WITH THE NATIONAL ELECT  
SAFETY STANDARDS AND A  
INSTRUCTION TAG FURNISH  
2. WHEN SERVICE, REPAIR  
TO ACCORDANT SERVICE IN  
INSTRUCTIONS AND ALL REPAIRS  
3. LIFTING LARGES, WHEN  
THE MOTOR (ONLY) WHEN  
THE MOTOR, A SPECIAL CHAIR

Westinghouse





# JEFFERSON PARISH

## DEPARTMENT OF PURCHASING

CYNTHIA LEE SHENG  
PARISH PRESIDENT

RENNY SIMNO  
DIRECTOR

### JEFFERSON PARISH VENDOR REGISTRATION FORM

All vendors interested in submitting bids, or proposals to provide equipment, materials, supplies, services or performing major repairs/construction for Jefferson Parish must complete this form and indicate commodity codes applicable to their business. This application **MUST** be accompanied with vendor's signed W-9 Form (or W-8IMY Form if an international vendor) and a listing of applicable commodity codes. This application will not be processed otherwise. In order to receive payments within 1 day of payment processing, please complete Vendor Direct Deposit Form available online at <http://purchasing.jeffparish.net> and email to [Purchasing@jeffparish.net](mailto:Purchasing@jeffparish.net). If a direct deposit form is not received then you will receive a paper check via the mail. Please note that it may delay payment by up to 5 days due to handling and mail time.

Name of Business: <i>Pneumatic and Hydraulic</i>		
Physical Address: <i>1338 Petroleum Pky</i>		Remittance Address:
City: <i>Broussard</i>	State: <i>LA</i>	Zip: <i>70518</i>
Phone Number <i>(337) 839 1999</i>		Fax Number: ( )
Email Address (REQUIRED): <i>breta@pneumaticandhydraulic.com</i>		Federal Identification Number (REQUIRED): <i>20-1467598</i>
Nature of Business: <i>Pneumatic and hydraulic equipment.</i>		
Trade, Specialty, or Professional Licenses:		

Please check one:

Corporation: ☐ Individual: ☐ Partnership: ☐ Other: ☒ *LLC*

Authorized to do Business in Louisiana: Yes: ☒ No: ☐

PAGE 1 of 3

GENERAL GOVERNMENT BLDG. — 200 DERBIGNY ST., SUITE 4400, GRETN, LA 70053  
OFFICE 504.364.2678

JOSEPH S. YENNI BLDG. — 1221 ELMWOOD PARK BLVD., SUITE 404, JEFFERSON, LA 70123  
OFFICE 504.364.2678

EMAIL: [PURCHASING@JEFFPARISH.NET](mailto:PURCHASING@JEFFPARISH.NET) WEBSITE: [WWW.JEFFPARISH.NET](http://WWW.JEFFPARISH.NET)



# JEFFERSON PARISH

## DEPARTMENT OF PURCHASING


CYNTHIA LEE SHENG  
PARISH PRESIDENT

RENNY SIMNO  
DIRECTOR

Jefferson Parish strongly encourages the involvement of minority and/or woman-owned business enterprises (DBE's including, MBE's, WBE's and SBE's) to stimulate participation in procurement and assistance programs. Please indicate below as applicable:

DBE: ☐ MBE: ☐ WBE: ☐ SBE: ☐

Vendors registering to conduct business with Jefferson Parish hereby acknowledge that upon bid/proposal submission, vendors agree to comply with all provisions of Louisiana Law as well compliance with the Jefferson Parish Code of Ordinances, Louisiana Code of Ethics as well as applicable Jefferson Parish ethical standards and Jefferson Parish standard terms and conditions. Further, it shall be the duty of every applicant for certification of eligibility for a parish contractor or program to cooperate with the Inspector General in any investigation, audit, inspection, performance review, or hearing pursuant to Jefferson Parish Code of Ordinances Section 2-155.10 (19). By submitting a bid, vendor acknowledges this and will abide by all provisions of the referenced Jefferson Parish Code of Ordinances.

Vendor Contact Name: <b>Bret Adams</b>	Title: <b>Co owner</b>
Signature: 	Date: <b>12/1/20</b>

**Prospective bidders are strongly encouraged to register for our e-procurement web portal.** All bids are uploaded onto this portal for review and response. There is no cost to register, view, download and submit bids. For more information on this and other bid information, please visit the Jefferson Parish Purchasing Department webpage located at <http://purchasing.jeffparish.net> or you can directly go to our e-procurement portal at [www.jeffparishbids.net](http://www.jeffparishbids.net). Vendors will be automatically notified of solicitations for which they have registered to receive.

Jefferson Parish uses the National Institute for Governmental Procurement Commodity Codes to notify prospective bidders of solicitations to which they would be interested in. By selecting the appropriate commodity codes and listing them on Page 3 of this application, prospective bidders may be notified of current solicitations. Please go to at <http://purchasing.jeffparish.net> for a complete list of commodity codes and enter in the form below.

PAGE 2 of 3

GENERAL GOVERNMENT BLDG. — 200 DERBIGNY ST., SUITE 4400, GRETN, LA 70053  
OFFICE 504.364.2678

JOSEPH S. YENNI BLDG. — 1221 ELMWOOD PARK BLVD., SUITE 404, JEFFERSON, LA 70123  
OFFICE 504.364.2678

EMAIL: [PURCHASING@JEFFPARISH.NET](mailto:PURCHASING@JEFFPARISH.NET) WEBSITE: [WWW.JEFFPARISH.NET](http://WWW.JEFFPARISH.NET)





# JEFFERSON PARISH

## DEPARTMENT OF PURCHASING

CYNTHIA LEE SHENG  
PARISH PRESIDENT

RENNY SIMNO  
DIRECTOR

### COMMODITY CODE ENROLLMENT

COMMODITY	COMMODITY DESCRIPTION

PAGE 3 OF 3

GENERAL GOVERNMENT BLDG. – 200 DERBIGNY ST., SUITE 4400, GRETN, LA 70053  
OFFICE 504.364.2678

JOSEPH S. YENNI BLDG. – 1221 ELMWOOD PARK BLVD., SUITE 404, JEFFERSON, LA 70123  
OFFICE 504.364.2678

EMAIL: PURCHASING@JEFFPARISH.NET WEBSITE: WWW.JEFFPARISH.NET

# Request for Taxpayer Identification Number and Certification

► Go to [www.irs.gov/FormW9](http://www.irs.gov/FormW9) for instructions and the latest information.

Give Form to the  
requester. Do not  
send to the IRS.

Print or type.  
See Specific Instructions on page 3.

1 Name (as shown on your income tax return). Name is required on this line; do not leave this line blank. <b>PHC Fluid Power</b>	
2 Business name/disregarded entity name, if different from above <b>Pneumatic And Hydraulic</b>	
3 Check appropriate box for federal tax classification of the person whose name is entered on line 1. Check only <b>one</b> of the following seven boxes.  <input type="checkbox"/> Individual/sole proprietor or single-member LLC <input type="checkbox"/> C Corporation <input type="checkbox"/> S Corporation <input type="checkbox"/> Partnership <input type="checkbox"/> Trust/estate <input checked="" type="checkbox"/> Limited liability company. Enter the tax classification (C=C corporation, S=S corporation, P=Partnership) ► <b>C</b> <b>Note:</b> Check the appropriate box in the line above for the tax classification of the single-member owner. Do not check LLC if the LLC is classified as a single-member LLC that is disregarded from the owner unless the owner of the LLC is another LLC that is <b>not</b> disregarded from the owner for U.S. federal tax purposes. Otherwise, a single-member LLC that is disregarded from the owner should check the appropriate box for the tax classification of its owner. <input type="checkbox"/> Other (see instructions) ►	4 Exemptions (codes apply only to certain entities, not individuals; see instructions on page 3):  Exempt payee code (if any) _____  Exemption from FATCA reporting code (if any) _____  <small>(Applies to accounts maintained outside the U.S.)</small>
5 Address (number, street, and apt. or suite no.) See instructions. <b>129 Demanade Blvd</b>	Requester's name and address (optional)
6 City, state, and ZIP code <b>Lafayette, LA 70503</b>	
7 List account number(s) here (optional)	

## Part I Taxpayer Identification Number (TIN)

Enter your TIN in the appropriate box. The TIN provided must match the name given on line 1 to avoid backup withholding. For individuals, this is generally your social security number (SSN). However, for a resident alien, sole proprietor, or disregarded entity, see the instructions for Part I, later. For other entities, it is your employer identification number (EIN). If you do not have a number, see *How to get a TIN*, later.

**Note:** If the account is in more than one name, see the instructions for line 1. Also see *What Name and Number To Give the Requester* for guidelines on whose number to enter.

Social security number								
			-			-		
or								
Employer identification number								
2	0	-	1	4	6	7	5	9
								8

## Part II Certification

Under penalties of perjury, I certify that:

- The number shown on this form is my correct taxpayer identification number (or I am waiting for a number to be issued to me); and
- I am not subject to backup withholding because: (a) I am exempt from backup withholding, or (b) I have not been notified by the Internal Revenue Service (IRS) that I am subject to backup withholding as a result of a failure to report all interest or dividends, or (c) the IRS has notified me that I am no longer subject to backup withholding; and
- I am a U.S. citizen or other U.S. person (defined below); and
- The FATCA code(s) entered on this form (if any) indicating that I am exempt from FATCA reporting is correct.

**Certification instructions.** You must cross out item 2 above if you have been notified by the IRS that you are currently subject to backup withholding because you have failed to report all interest and dividends on your tax return. For real estate transactions, item 2 does not apply. For mortgage interest paid, acquisition or abandonment of secured property, cancellation of debt, contributions to an individual retirement arrangement (IRA), and generally, payments other than interest and dividends, you are not required to sign the certification, but you must provide your correct TIN. See the instructions for Part II, later.

Sign Here Signature of U.S. person ► *Sherie Hulin*

Date ► 01/31/2020

## General Instructions

Section references are to the Internal Revenue Code unless otherwise noted.

**Future developments.** For the latest information about developments related to Form W-9 and its instructions, such as legislation enacted after they were published, go to [www.irs.gov/FormW9](http://www.irs.gov/FormW9).

## Purpose of Form

An individual or entity (Form W-9 requester) who is required to file an information return with the IRS must obtain your correct taxpayer identification number (TIN) which may be your social security number (SSN), individual taxpayer identification number (ITIN), adoption taxpayer identification number (ATIN), or employer identification number (EIN), to report on an information return the amount paid to you, or other amount reportable on an information return. Examples of information returns include, but are not limited to, the following.

- Form 1099-INT (interest earned or paid)

- Form 1099-DIV (dividends, including those from stocks or mutual funds)
- Form 1099-MISC (various types of income, prizes, awards, or gross proceeds)
- Form 1099-B (stock or mutual fund sales and certain other transactions by brokers)
- Form 1099-S (proceeds from real estate transactions)
- Form 1099-K (merchant card and third party network transactions)
- Form 1098 (home mortgage interest), 1098-E (student loan interest), 1098-T (tuition)
- Form 1099-C (canceled debt)
- Form 1099-A (acquisition or abandonment of secured property)

Use Form W-9 only if you are a U.S. person (including a resident alien), to provide your correct TIN.

If you do not return Form W-9 to the requester with a TIN, you might be subject to backup withholding. See What is backup withholding, later.





Pneumatic and Hydraulic Company  
36376 Hwy 30  
Geismar, LA 70734  
(225) 744-7004

## QUOTATION

Quote Number	4136.1
Quote Date	12/02/2020
Terms	Pre-Pay
Customer ID	
Quote Expires	01/01/2021

<b>Bill To:</b>
Jefferson Parish Purchasing 200 Derbigny St Suite 4400 Gretna, LA 70053 (504) 364-2650 Attn: Accounts Payable

<b>Ship To:</b>
200 Derbigny St Suite 4400 Gretna, LA 70053 Requested By: Donna Reamy Job/RFQ #: JP Bid # 50 - 132730

<b>Ship Via</b>	<b>Sales Rep</b>	<b>Taker</b>
	Frank Corriere	Frank Corriere

**Shipping Notes**

**Order Notes**

Item ID Item Description	Quantity	UOM	Unit Price	Extended Price
QUOTE ITEM - BTR N80045012VPAMVCOG5B5N01	1.00	EA	164,041.10	164,041.10

N80045012VPAMVCOG5B5N01 NEW LOUIS ALLIS PREMIUM  
EFFICIENT VERTICAL SOLID SHAFT INDUCTION MOTOR RATED:  
800 HP, 1800 RPM, FRAME 5012ZVPA-30, TO BE DROP IN  
REPLACEMENT FOR WESTINGHOUSE 5810-P30 MATCHING ALL  
CRITICAL MOUNTING DIMENSIONS, VOLT 4160, 3 PHASE, 60  
HERTZ, SERVICE FACTOR 1.15, NEMA DESIGN B, CLASS F  
INSULATION. 30,900 lbs. Down Thrust. INCLUDES: LIGHTING AND  
SURGE PROTECTION, 175% EXTRA HIGH THRUST, 100 OHM'S  
WINDING RTD'S. WARRANTY FIVE YEARS

Customer Part #:

Alternate Part #:

Line Item Note:

LEAD TIME: 10 - 12 WEEKS

<b>Total Lines:</b> 1	<b>Sub-Total:</b> 164,041.10
	<b>Tax:</b> TBD
	<b>Addons:</b> 0.00
	<b>Total (Before Sales Tax):</b> 164,041.10

This document is strictly confidential, and not to be distributed to anyone other than the intended receiving party. Prices are subject to change without notice. Prices quoted do not include any federal, state or local sales, use, property, TERP or excise taxes. Taxable status and tax rates will be determined at time of order. All terms and conditions apply.



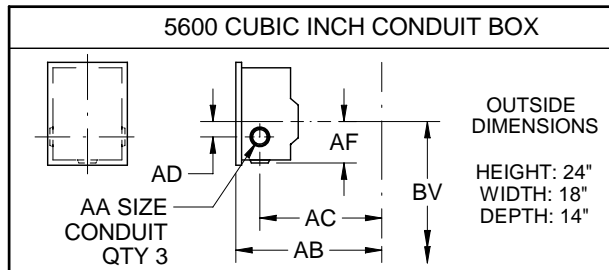
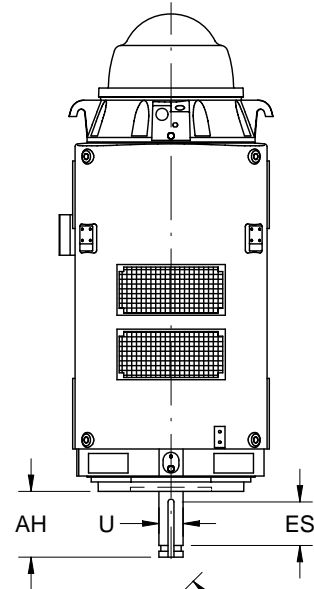
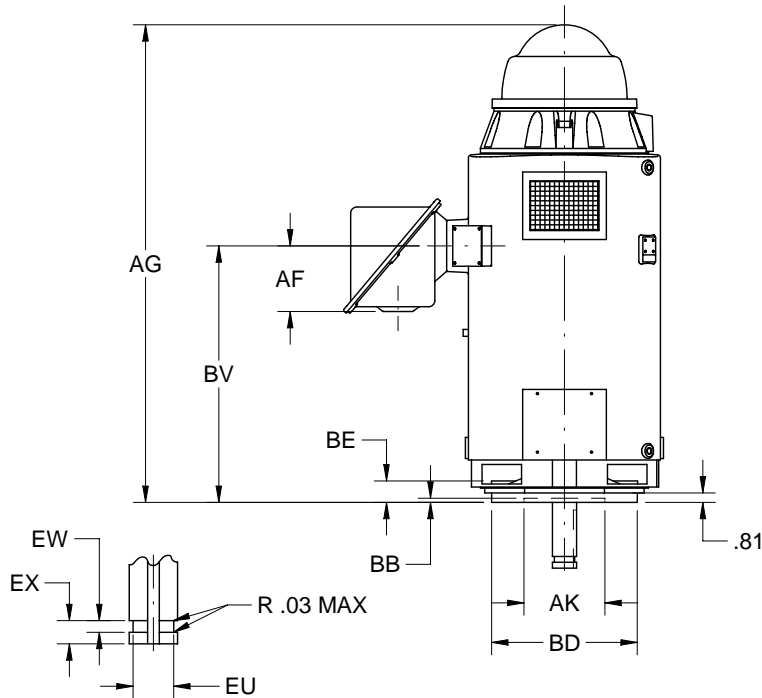
LOUIS ALLIS  
A WORLDWIDE ELECTRIC COMPANY

# VERTICAL MOTORS

WEATHER PROTECTED TYPE I  
FRAME: 5000VPA

SHEET:

1 OF 1



DM SIZE CONDUIT  
(ACCESSORY LEADS  
AS REQUIRED)

FRAME	P	AG	BV
5012	40.00	78.88	42.00

POLE	U	AH	ES	EU	EW	EX	SQ
	-.001	±.062	MIN	-.005	+.002	-.005	KEY
4 & SLOWER	3.125	7.000	5.00	2.625	.500	1.000	.750

VOLTS	C/BOX VOLUME (CI. IN.)	AB	AC	AD	AF	BU
0-4800	3400	36.50	27.88	3.00	10.94	45°

FRAME	AJ	AK	BB	BD	BE	BF
		+.005	MIN	MAX		
			.25		2.19	
5000VPA	26.000	22.000		30.50		.81

AA	DM
2 NPT	1/2 NPT
2 1/2 NPT	3/4 NPT
3 NPT	1 NPT
3 1/2 NPT	1 1/4 NPT
4 NPT	1 1/2 NPT

TOLERANCES	
FACE RUNOUT	.007 TIR
PERMISSIBLE ECCENTRICITY OF MOUNTING RABBET	.007 TIR
PERMISSIBLE SHAFT RUNOUT	.003 TIR
MAXIMUM SHAFT END PLAY	.010

1. DIMENSIONS MAY VARY .25" DUE TO CASTING AND/OR FABRICATION VARIATIONS.
2. DIMENSIONS AND TOLERANCES ARE SHOWN IN INCHES.
3. 5000VP HAS TWO BOLT CIRCLES.