



CENTRALBIDDING
FROM CENTRAL AUCTION HOUSE

5000145878 PURCHASE OF CLEANER FOR DEPARTMENT OF TRANSIT
Jefferson Parish Government

Project documents obtained from www.CentralBidding.com

08-Aug-2024 08:47:43 AM



JEFFERSON PARISH

DEPARTMENT OF PURCHASING

CYNTHIA LEE SHENG
PARISH PRESIDENT

RENNY SIMNO
DIRECTOR

August 7, 2024

JEFFERSON PARISH INVITATION TO BID NOTIFICATION

This notification is to inform bidders of the following bid solicitation for Jefferson Parish Government. Please review this notification in its entirety for details on how to access the on-line bidding site to view and download the Invitation to Bid, including all required bidding documents. The notification also states how and/or where to submit the bid response to the Jefferson Parish Purchasing Department on the bid opening date or before.

BID # 50-00145878

PURCHASE OF CLEANER FOR DEPARTMENT OF TRANSIT

Bids will be received at centrалаuctionhouse.com until 11 a.m., on **8/12/2024**. Bids delivered after 11 a.m., will not be accepted.

Where to obtain the Invitation to Bid: This Invitation to Bid may be viewed, and/or downloaded from our on-line bidding site, Central Bidding by clicking, <http://www.jeffparishbids.net>. All vendors are encouraged to register with Central Bidding in order to respond, free of charge, to Jefferson Parish Invitation to Bid.

How to respond: Vendors can respond either through Central Bidding, our on-line bidding site or through the link above.

For more information on this bid, please contact the buyer assigned to this bid:

Kiesler Lee, Purchasing Specialist I

504-364-2682

Kiesler.Lee@jeffparish.gov

Or you may visit the Purchasing Department's webpage at www.jeffparish.net.

JOSEPH S. YENNI BUILDING - 1221 ELMWOOD PARK BLVD - SUITE 404 - JEFFERSON, LA 70123 - PO BOX 10242 JEFFERSON, LA 70181-0242
OFFICE 504.364-2678

GENERAL GOVERNMENT BUILDING - 200 DERBIGNY ST - SUITE 4400 - GRETN, LA 70053 - PO BOX 9 - GRETN - LA 70054
OFFICE 504.364.2678

EMAIL: PURCHASING@JEFFPARISH.NET

WEBSITE: WWW.JEFFPARISH.NET



Bid Number 50-00145878

**PURCHASE OF CLEANER FOR DEPARTMENT OF
TRANSIT**

BID DUE: August 12, 2024 AT 11:00 AM

ATTENTION VENDORS!!!

Please review all pages and respond accordingly, complying with all provisions in the technical specifications and Jefferson Parish Instructions for Bidders and General Terms and Conditions. All bids must be received on the Purchasing Department's eProcurement site, www.jeffparishbids.net, by the bid due date and time. Late bids will not be accepted.

**Jefferson Parish Purchasing Department
200 Derbigny Street
General Government Building, Suite 4400
Gretna, LA 70053
Purchasing Specialist: Kiesler Lee
Email: Kiesler.Lee@jeffparish.gov
Phone: 504-364-2682**

DATE: 8/07/2024

INVITATION TO BID
THIS IS NOT AN ORDER

Page: 1

BID NO.: 50-00145878

JEFFERSON PARISH
PURCHASING DEPARTMENT
P.O. BOX 9
GRETN, LA. 70054-0009
504-364-2678

VENDOR: 27118 BLANK BID COPY VENDOR

PURCHASING SPECIALIST:
KLEE@jeffparish.net

Bids will be received until 11:00 AM, 8/12/2024

LATE BIDS WILL NOT BE ACCEPTED

NOTE: ONLY BIDS WRITTEN IN INK OR TYPEWRITTEN, AND PROPERLY SIGNED BY A MEMBER OF THE FIRM OR AUTHORIZED REPRESENTATIVE, WILL BE ACCEPTED. PENCIL AND/OR PHOTOSTATIC FIGURES OR SIGNATURES SHALL RESULT IN BID REJECTION. HOWEVER, ELECTRONIC SIGNATURES AS DEFINED IN LSA – R.S. 9:2602(8) ARE ACCEPTABLE. SIGNATURE MUST BE A SECURED DIGITAL SIGNATURE AND MUST PROVIDE PROOF OF THE SECURED SIGNATURE WITH BID SUBMISSION.

All bids submitted are subject to these instructions and general conditions and any special conditions and specifications contained herein, all of which are made part of this bid proposal reference. By submitting a bid, vendor agrees to comply with all provisions of Louisiana Law, as well be in compliance with the Jefferson Parish Code of Ordinances, Louisiana Code of Ethics, applicable Jefferson Parish ethical standards and Jefferson Parish Resolution No. 136353 as amended. A copy of these resolutions may be obtained from the Office of the Parish Clerk, Suite 6700, Jefferson Parish General Government Building, 200 Derbigny Street, Gretna, LA 70053. You may also obtain a copy by visiting the Purchasing Department webpage at <http://www.jeffparish.gov/464/Purchasing> and clicking on On-line forms.

All vendors submitting bids should register as a Jefferson Parish vendor if not already yet registered. Registration forms may be downloaded from <http://www.jeffparish.gov/464/Purchasing> and by clicking on Vendor Information. Current W-9 forms with respective Tax Identification numbers and vendor applications may be submitted at any time; however, if your company is not registered and/or a current W-9 form is not on file, vendor registration is mandatory. Vendors may experience a delay in payment if your company is not a registered vendor with Jefferson Parish.

Jefferson Parish is exempt from paying sales tax under LSA-R.S. 47:301 (8)(c). All prices for purchases by Jefferson Parish of supplies and materials shall be quoted in the unit of measure specified and unless otherwise specified, shall be exclusive of state and local taxes. The price quoted for work shall be stated in figures. In the event there is a difference in unit prices and totals, the unit price shall prevail. Quotations shall be based on F.O.B. Delivered, anywhere within the Parish as designated by the Purchasing Department. JEFFERSON PARISH WILL ACCEPT ONE BID ONLY FROM EACH VENDOR. Items bid must meet specifications. JEFFERSON PARISH will accept one price for each item unless otherwise indicated. Two or more prices for one item will result in bid rejection. Bidders are required to complete, sign and return the bid form and/or complete and return the associated line item pricing forms as indicated. The price quoted for work shall be stated in figures. In the event there is a difference in unit prices and totals, the unit prices shall prevail.

JEFFERSON PARISH reserves the right to award contracts or place orders on a lump sum or individual item basis, or such combination, as shall in its judgment be in the best interest of JEFFERSON PARISH. Every contract or order shall be awarded to the LOWEST RESPONSIVE and RESPONSIBLE BIDDER, taking into consideration the CONFORMITY WITH THE SPECIFICATIONS and the DELIVERY AND/OR COMPLETION DATE.

PROTESTS: Only those vendors that submit bids in response to this solicitation may protest any element of the procurement, in writing to the Director of the Purchasing Department. Written protest must be received within 48 hours of the release of the bid tabulation by the Purchasing Department. After consultation, the Parish Attorney's Office will then respond to protests in writing. (For more information, please see Chapter 2, Article VII, Division 2, Sec. 2-914.1 of the Jefferson Parish Code of Ordinances.)

JEFFERSON PARISH reserves the right to cancel all or any part of an order if not shipped promptly. No charges will be allowed for parking or cartage unless specified in the quotation. The order must not be filled at a higher price than quoted. JEFFERSON PARISH reserves the right to cancel at any time and for any reason by issuing a THIRTY (30) day written notice to the contractor.

JEFFERSON PARISH requires all products to be new (current) and all work must be performed according to standard practices for the project. Unless otherwise specified, no aftermarket parts will be accepted. Unless otherwise specified, all workmanship and materials must have at least one (1) year guaranty, in writing, from the date of delivery and/or acceptance of the project. Any deviations or alteration from the specifications must be indicated on the bid form for each item and upon request, product data for same must be submitted by the time specified by the Purchasing Department.

If this bid requires a pre-bid conference (see Additional Requirements section), bidders are advised that such conference will be held to allow bidders the opportunity to identify any discrepancies in the bid specifications and seek further clarification regarding instructions. The Purchasing Department will issue a written response to bidders' questions in the form of an Addendum.

All formal Addenda require written acknowledgment on the bid form by the bidder by the bidder placing the Addendum number in the appropriate section. Failure to acknowledge an Addendum on the bid form shall cause the bid to be rejected; JEFFERSON PARISH reserves the right to award bid to next lowest responsive and responsible bidder in this event.

USE OF BRAND NAMES AND STOCK NUMBERS: Where brand names and stock numbers are specified, it is for the purpose of establishing certain minimum standards of quality. Bids may be submitted for products of equal quality, provided brand names and stock numbers are specified. Complete product data may be required prior to award.

Quantities listed are for bidding purposes only. Actual requirements may be more or less than quantities listed.

INSTRUCTIONS FOR BIDDERS AND GENERAL CONDITIONS

Bidders are not to exclude from participation in, deny the benefits of, or subject to discrimination under any program or activity, any person in the United States on the grounds of race, color, national origin, or sex; nor discriminate on the basis of age under the Age Discrimination Act of 1975, or with respect to an otherwise qualified handicapped individual as provided in Section 504 of the Rehabilitation Act of 1973, or on the basis of religion, except that any exemption from such prohibition against discrimination on the basis of religion as provided in the Civil Rights Act of 1964, or Title VI and VII of the Act of April 11, 1968, shall also apply. This assurance includes compliance with the administrative requirements of the Revenue Sharing final handicapped discrimination provisions contained in Section 51.55 (c), (d), (e), and (k)(5) of the Regulations. New construction or renovation projects must comply with Section 504 of the 1973 Rehabilitation Act, as amended, in accordance with the American National Standard Institute's specifications (ANSI A1 17.1-1961).

Jefferson Parish and its partners as the recipients of federal funds are fully committed to awarding a contract(s) to firm(s) that will provide high quality services and that are dedicated to diversity and to containing costs. Thus, Jefferson Parish strongly encourages the involvement of minority and/or woman-owned business enterprises (DBE's, including MBE's, WBE's and SBE's) to stimulate participation in procurement and assistance programs.

IN ACCORDANCE WITH STATE REGULATIONS JEFFERSON PARISH OFFERS ELECTRONIC PROCUREMENT TO ALL VENDORS

This electronic procurement system allows vendors the convenience of reviewing and submitting bids online.

This is a secure site and authorized personnel have limited read access only. Bidders are to submit electronically using this free service; while the website accepts various file types, one single PDF file containing all appropriate and required bid documents is preferred. Bidders submitting uploaded images of bid responses are solely responsible for clarity. If uploaded images/documents are not legible, then bidder's submission will be rejected. Please note all requirements contained in this bid package for electronic bid submission.

Please visit our E-Procurement Page at www.jeffparishbids.net to register and view Jefferson Parish solicitations. For more information, please visit the Purchasing Department page at <http://www.jeffparish.gov/464/Purchasing>.

ADDITIONAL REQUIREMENTS FOR THIS BID

PLEASE MATCH THE NUMBERS PRINTED IN THIS BOX WITH THE CORRESPONDING INSTRUCTIONS BELOW. IF THE NUMBER IS NOT SPECIFIED IN THIS BOX, IT IS NOT APPLICABLE FOR THIS BID.

13

1. All bidders must attend the MANDATORY pre-bid conference and will be required to sign in and out as evidence of attendance. In accordance with LSA R.S. 38:2212(I), all prospective bidders shall be present at the beginning of the MANDATORY pre-bid conference and shall remain in attendance for the duration of the conference. Any prospective bidder who fails to attend the conference or remain for the duration shall be prohibited from submitting a bid for the project.
2. Attendance to this pre-bid conference is optional. However, failure to attend the pre-bid conference shall not relieve the bidder of responsibility for information discussed at the conference. Furthermore, failure to attend the pre-bid conference and inspection does not relieve the successful bidder from the necessity of furnishing materials or performing any work that may be required to complete the work in accordance with the specification with no additional cost to the owner.
3. Contractor must hold current applicable JEFFERSON PARISH licenses with the Department of Building Permits. Contractor shall obtain any and all permits required by the JEFFERSON PARISH Department of Building Permits. The contractor shall be responsible for the payment of these permits. All permits must be obtained prior to the start of the project. Contractor must also hold any and all applicable Federal and State licenses. Contractor shall be responsible for the payment of these permits and shall obtain them prior to the start of the project.
4. A LA State Contractor's License will be required in accordance with LSA R.S. 37-2150 et. seq. and such license number will be shown on the outside of the bid electronic envelope. Failure to comply will cause the bid to be rejected. When submitting the bid electronically, the license number must be entered in the appropriate field in the electronic procurement system. Failure to comply will cause the bid to be rejected.

INSTRUCTIONS FOR BIDDERS AND GENERAL CONDITIONS

5. It is the bidder's responsibility to visit the job site and evaluate the job before submitting a bid.
6. Job site must be clean and free of all litter and debris daily and upon completion of the contract. Passageways must be kept clean and free of material, equipment, and debris at all times. Flammable material must be removed from the job site daily because storage will not be permitted on the premises. Precaution must be exercised at all times to safeguard the welfare of JEFFERSON PARISH and the general public.
7. **PUBLIC WORKS BIDS:** All awards for public works in excess of \$5,000.00 will be reduced to a formal contract which shall be recorded at the contractor's expense with the Clerk of Court and Ex-Officio Recorder of Mortgages for the Parish of Jefferson. A price list of recordation costs may be obtained from the Clerk of Court and Ex-Officio Recorder of Mortgages for the Parish of Jefferson. All awards in excess of \$25,000.00 will require both a performance and a payment bond. Unless otherwise stated in the bid specifications, the performance bond requirements shall be 100% of the contract price. Unless otherwise state in the bid specifications, the payment bond requirements shall be 100% of the contract price. Both bonds shall be supplied at the signing of the contract.
8. **NON-PUBLIC WORKS BIDS:** A performance bond will be required for this bid. The amount of the bond will be 100% of the contract price unless otherwise indicated in the specifications. The performance bond shall be supplied at the signing of the contract.
9. **NON-PUBLIC WORKS BIDS:** A payment bond will be required for this bid. The amount of the bond will be 100% of the contract price unless otherwise indicated in the specifications. The payment bond shall be supplied at the signing of the contract.
10. All bidders must comply with the requirements stated in the attached "Standard Insurance Requirements" sheet attached to this bid solicitation. Any deviation from the Standard Insurance Requirements must be requested in writing prior to bid opening. Written approval for any deviation, must be submitted with your bid submission. Failure to comply with this instruction will result in bid rejection.
11. A bid bond will be required with bid submission in the amount of 5% of the total bid, unless otherwise stated in the bid specifications. All sureties must be in original format (no copies). When submitting a bid online, vendors must submit an electronic bid bond through the respective online clearinghouse bond management system(s) as indicated in the electronic bid solicitation on Central Auction House. No scanned paper copies of any bid bond will be accepted as part of the electronic bid submission.
12. This is an as needed basis contract. JEFFERSON PARISH makes no representations on warranties with regard to minimum guaranteed quantities unless otherwise stated in the bid specifications.
13. Freight charges should be included in total cost when quoting. If not quoted FOB DELIVERED, freight must be quoted as a separate item. Bid may be rejected if not quoted FOB DELIVERED or if freight charges are not indicated on bid form.
14. **PUBLIC WORKS BIDS - Completed, Signed and Properly Notarized Affidavits Required;** This applies to all solicitations for construction, alteration or demolition of public buildings or projects, in conformity with the provisions contained in LSA-RS 38:2212.9, LSA-RS 38:2212.10, LSA-RS 38:2224, and Sec 2-923.1 of the Jefferson Parish Code of Ordinances. For bidding purposes, all bidders must submit with bid submission COMPLETED, SIGNED and PROPERLY NOTARIZED Affidavits, including: Non-Conviction Affidavit, Non-Collusion Affidavit, Campaign Contribution Affidavit, Debt Disclosures Affidavit and E-Verify Affidavit. For the convenience of vendors, all affidavits have been combined into one form entitled PUBLIC WORKS BID AFFIDAVIT. This affidavit must be submitted in its original format, and without material alteration, in order to be compliant and for the bid to be considered responsive. A scanned copy of the completed, signed and properly notarized affidavit may be submitted with the bid, however, the successful bidder must submit the original affidavit in its original format and without material alteration upon contract execution. Failure to comply will result in the bid submission being rejected as non-responsive. The Parish reserves the right to award bid to the next lowest responsive and responsible bidder in this event.
15. **NON PUBLIC WORK BIDS - Completed, Signed and Properly Notarized Affidavits Required** in conformity with the provisions contained in LSA – RS 38:2224 and Sec 2-923.1 of the Jefferson Parish Code of Ordinances. For bidding purposes, all bidders must submit with bid submission COMPLETED, SIGNED and PROPERLY NOTARIZED Affidavits, including: Non-Collusion Affidavit, Debt Disclosures Affidavit and Campaign Contribution Affidavit. For the convenience of vendors, all affidavits have been combined into one form entitled NON PUBLIC WORKS BID AFFIDAVIT. This affidavit must be submitted in its original format, and without material alteration, in order to be compliant and for the bid to be considered responsive. A scanned copy of the completed, signed and properly notarized affidavit may be submitted with the bid, however, the successful bidder must submit the original affidavit in its original format and without material alteration upon contract execution. Failure to comply will result in the bid submission being rejected as non-responsive. The Parish reserves the right to award bid to the next lowest responsive and responsible bidder in this event.

DATE: 8/07/2024

BID NO.: 50-00145878

Page: 4

INSTRUCTIONS FOR BIDDERS AND GENERAL CONDITIONS

16. The ensuing contract for this bid solicitation may be eligible for FEMA reimbursement and/or Federal funding/reimbursement. As such, the referenced appendix will be applicable accordingly and shall be considered a part of the bid documents. All applicable certifications must be duly completed, signed and submitted as per the appendix instructions. Failure to submit applicable certifications as per the appendix instructions will result in bid rejection.

17. For this project, the Contractor shall not pay any state or local sales or use taxes on materials and equipment which are affixed and made part of the immovable property of the project or which is permanently incorporated in the project (hereinafter referred to as "applicable materials and equipment"). All purchases of applicable materials or equipment shall be made by the contractor on behalf of and as the agent of Jefferson Parish (Owner), a political subdivision of the State of Louisiana. No state and local sales and use taxes are owed on applicable materials and equipment under the provisions of Act 1029 of the 1991 Regular Session - Louisiana Revised Statute 47:301(8)(c). Owner will furnish to contractor a certificate form which certifies that Owner is not required to pay such state or local sales and use taxes, and contractor shall furnish a copy of such certificate to all vendors or suppliers of the applicable materials and equipment, and report to Owner the amount of taxes not incurred.

It shall be the duty of every parish officer, employee, department, agency, special district, board, and commission: and the duty of every contractor, subcontractor, and licensee of the parish, and the duty of every applicant for certification of eligibility for a parish contract or program, to cooperate with the Inspector General in any investigation, audit, inspection, performance review, or hearing pursuant to Jefferson Parish Code of Ordinances Section 2-155.10(19). By submitting a bid, vendor acknowledges this and will abide by all provisions of the referenced Jefferson Parish Code of Ordinances.

DATE: 8/07/2024

INVITATION TO BID
THIS IS NOT AN ORDER

Page: 5

BID NO.: 50-00145878

JEFFERSON PARISH

PURCHASING DEPARTMENT
P.O. BOX 9
GRETN, LA. 70054-0009
504-364-2678

VENDOR: 27118 BLANK BID COPY VENDOR

PURCHASING SPECIALIST:
KLEE

As per LSA-RS 47:301 et seq., all governmental bodies are excluded from payment of sales taxes to any Louisiana taxing body. Quotations shall be based on F.O.B. Agency warehouse or jobsite, anywhere within the Parish as designated by the Purchasing Department.

JEFFERSON PARISH reserves the right to cancel all or any part of an order if not shipped promptly. No charges will be allowed for parking or cartage unless specified in quotation. The order must not be filled at a higher price than quoted. JEFFERSON PARISH reserves the right to cancel at any time and for any reason by issuing a THIRTY (30) day written notice to the contractor.

JEFFERSON PARISH is expecting all products to be new and all work to be done in workman-like manner, according to standard practices. Any deviations or alteration from the specifications must be indicated on the bid form for each item and upon request, product data for same must be submitted by the time specified by the Purchasing Department.

DELIVERY: FOB JEFFERSON PARISH

INDICATE DELIVERY DATE ON EQUIPMENT AND SUPPLIES

10 WORKING

INDICATE STARTING TIME (IN DAYS) FOR CONSTRUCTION WORK

10 WORKING

INDICATE COMPLETION TIME (IN DAYS) FOR CONSTRUCTION WORK

10 WORKING

In the event that addenda are issued with this bid, bidders MUST acknowledge all addenda on the bid form. Bidder must acknowledge receipt of an addendum on the bid form by placing the addendum number as indicated. Failure to acknowledge any addendum on the bid form will result in bid rejection.

Acknowledge Receipt of Addenda: NUMBER: _____
NUMBER: _____
NUMBER: _____
NUMBER: _____

LOUISIANA CONTRACTOR'S LICENSE NO.: (if applicable) 72-0991128

***** ALL BIDDERS MUST COMPLETE SECTION BELOW *****

FIRM NAME: Economical Janitorial
AND Paper Supplies LLC

SIGNATURE: Suzie Migliore
(Must be signed here)

TITLE: PRESIDENT

PRINT OR TYPE NAME: Suzie Migliore

ADDRESS: P.O. Box 23607

CITY, STATE: NEW ORLEANS, LA

ZIP: 70183-3607

TELEPHONE: (504) 464-7166 x 3110

FAX: (504) 465-9563

EMAIL ADDRESS: Suzie@economicaljanitorial.com

TOTAL PRICE OF ALL BID ITEMS: \$ 8898.95

INVITATION TO BID FROM JEFFERSON PARISH - continued

BID NO.: 50-00145878

SEALED BID

ITEM NUMBER	QUANTITY	U/M	DESCRIPTION OF ARTICLES	UNIT PRICE QUOTED	TOTALS
1	1.00	EA	<p>PURCHASE OF CLEANER FOR DEPARTMENT OF TRANSIT</p> <p>0010 NEUTRAL FLOOR CLEANER DEVELOPED FOR SCRUBBER MACHINES, THIS FORMULA IS NON-FOAMING, PHOSPHATE FREE AND CONTAINS INGREDIENTS THAT PROTECT THE MACHINE FROM SCALE AND CONTAMINATES.</p>	<p>\$ 298.95</p> <p>Betco 13355 PH 7 Floor Cleaner</p>	<p>\$ 298.95</p> <p>55 gal Drum</p>
2	1.00	EA	<p>0020 002 BD 70/75 W Bp+190 AGM THE KARCHER BD 70/75 W CLASSIC BP IS</p> <p>A COST-EFFECTIVE 28-INCH WALK BEHIND SCRUBBER. EASY TO OPERATE CONTROLS ALLOW FOR QUICK TRAINING AND OPERATION. COMPONENTS EXPOSED TO INTENSE WEAR ARE MADE OF DURABLE ALUMIUM FOR LONGER LIFE. THE ADJUSTABLE BRUSH HEAD PROVIDES 66-150 LBS. OF DOWN PRESSURE. INCLUDING AGM BATTERY POWERED WITH SHELF CHARGER. SUITABLE FOR CLEANING IN INDUSTRIAL FACILITIES, RETAIL STORES, MUNICIPALITIES, EDUCATION AND CLEANING BUILDINGS.</p>	<p>\$ 8600.00</p> <p>4.841-467.0 Karcher BD 70/75 WBPClassic</p>	<p>\$ 8600.00</p> <p>EACH</p>
3	1.00	EA	0030 FREIGHT	\$ 0.00	\$ 0.00

ECONOMICAL JANITORIAL & PAPER SUPPLIES, LLC

P.O. BOX 23607
NEW ORLEANS, LA 70183-3607
(504) 464-7166
FAX (504) 465-9563
www.economicaljanitorial.com

August 8, 2024

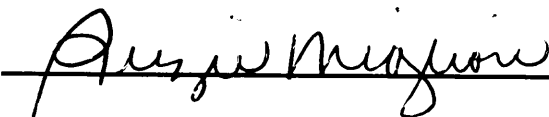
Special Meeting of the Board of Directors of
Economical Janitorial & Paper Supplies LLC

A special meeting of the Board of Directors was called on Thursday August 8, 2024 at the offices of Economical Janitorial & Paper Supplies, LLC located at:

1420 Sams Avenue
Suite F
Harahan, LA 70123

Suzie Migliore was appointed chairperson of the meeting and a waiver of notice and of the reading of the previous meeting minutes was approved by all present which included all directors. The purpose of this meeting was to authorize Suzie Migliore, President of Economical Janitorial & Paper Supplies, LLC to Bid – Bid #50-00145878 Purchase of Cleaner for Department of Transit for Jefferson Parish Government Department of Purchasing.

All present voted to authorize the above and being no further business the chairperson adjourned the meeting.

A handwritten signature in cursive script, appearing to read "Suzie Migliore", is written over a horizontal line.

Suzie Migliore

ACORD™

CERTIFICATE OF LIABILITY INSURANCE

DATE (MM/DD/YYYY)

8/08/2024

THIS CERTIFICATE IS ISSUED AS A MATTER OF INFORMATION ONLY AND CONFERS NO RIGHTS UPON THE CERTIFICATE HOLDER. THIS CERTIFICATE DOES NOT AFFIRMATIVELY OR NEGATIVELY AMEND, EXTEND OR ALTER THE COVERAGE AFFORDED BY THE POLICIES BELOW. THIS CERTIFICATE OF INSURANCE DOES NOT CONSTITUTE A CONTRACT BETWEEN THE ISSUING INSURER(S), AUTHORIZED REPRESENTATIVE OR PRODUCER, AND THE CERTIFICATE HOLDER.

IMPORTANT: If the certificate holder is an ADDITIONAL INSURED, the policy(ies) must have ADDITIONAL INSURED provisions or be endorsed. If SUBROGATION IS WAIVED, subject to the terms and conditions of the policy, certain policies may require an endorsement. A statement on this certificate does not confer any rights to the certificate holder in lieu of such endorsement(s).

PRODUCER Marsh & McLennan Agency LLC 360 East Vine Street, Ste 200 Lexington, KY 40507 859 254-8023	CONTACT NAME: Brenda S Stickrod AAI PHONE (A/C, No, Ext): 859-244-7684 FAX (A/C, No): E-MAIL ADDRESS: Brenda.Stickrod@MarshMMA.com														
INSURED Economical Janitorial & Paper Supplies, LLC; P. O. Box 23607 New Orleans, LA 70183	<table border="1"> <thead> <tr> <th data-bbox="822 420 1453 451">INSURER(S) AFFORDING COVERAGE</th> <th data-bbox="1453 420 1597 451">NAIC #</th> </tr> </thead> <tbody> <tr> <td data-bbox="822 451 1453 483">INSURER A : Zurich American Insurance Company</td> <td data-bbox="1453 451 1597 483">16535</td> </tr> <tr> <td data-bbox="822 483 1453 514">INSURER B : Federal Insurance Company</td> <td data-bbox="1453 483 1597 514">20281</td> </tr> <tr> <td data-bbox="822 514 1453 546">INSURER C :</td> <td data-bbox="1453 514 1597 546"></td> </tr> <tr> <td data-bbox="822 546 1453 577">INSURER D :</td> <td data-bbox="1453 546 1597 577"></td> </tr> <tr> <td data-bbox="822 577 1453 609">INSURER E :</td> <td data-bbox="1453 577 1597 609"></td> </tr> <tr> <td data-bbox="822 609 1453 634">INSURER F :</td> <td data-bbox="1453 609 1597 634"></td> </tr> </tbody> </table>	INSURER(S) AFFORDING COVERAGE	NAIC #	INSURER A : Zurich American Insurance Company	16535	INSURER B : Federal Insurance Company	20281	INSURER C :		INSURER D :		INSURER E :		INSURER F :	
INSURER(S) AFFORDING COVERAGE	NAIC #														
INSURER A : Zurich American Insurance Company	16535														
INSURER B : Federal Insurance Company	20281														
INSURER C :															
INSURER D :															
INSURER E :															
INSURER F :															

COVERAGES

CERTIFICATE NUMBER:

REVISION NUMBER:

THIS IS TO CERTIFY THAT THE POLICIES OF INSURANCE LISTED BELOW HAVE BEEN ISSUED TO THE INSURED NAMED ABOVE FOR THE POLICY PERIOD INDICATED. NOTWITHSTANDING ANY REQUIREMENT, TERM OR CONDITION OF ANY CONTRACT OR OTHER DOCUMENT WITH RESPECT TO WHICH THIS CERTIFICATE MAY BE ISSUED OR MAY PERTAIN, THE INSURANCE AFFORDED BY THE POLICIES DESCRIBED HEREIN IS SUBJECT TO ALL THE TERMS, EXCLUSIONS AND CONDITIONS OF SUCH POLICIES. LIMITS SHOWN MAY HAVE BEEN REDUCED BY PAID CLAIMS.

INSR LTR	TYPE OF INSURANCE	ADDL INSR	SUBR WVD	POLICY NUMBER	POLICY EFF (MM/DD/YYYY)	POLICY EXP (MM/DD/YYYY)	LIMITS
A	<input checked="" type="checkbox"/> COMMERCIAL GENERAL LIABILITY CLAIMS-MADE <input checked="" type="checkbox"/> OCCUR GEN'L AGGREGATE LIMIT APPLIES PER: <input type="checkbox"/> POLICY <input type="checkbox"/> PRO-JECT <input type="checkbox"/> LOC OTHER:	Y		GLO435382712	01/01/2024	01/01/2025	EACH OCCURRENCE \$1,000,000 DAMAGE TO RENTED PREMISES (Ea occurrence) \$500,000 MED EXP (Any one person) \$10,000 PERSONAL & ADV INJURY \$1,000,000 GENERAL AGGREGATE \$2,000,000 PRODUCTS - COMP/OP AGG \$2,000,000 \$
A	AUTOMOBILE LIABILITY <input checked="" type="checkbox"/> ANY AUTO OWNED AUTOS ONLY <input type="checkbox"/> SCHEDULED AUTOS <input checked="" type="checkbox"/> HIRED AUTOS ONLY <input checked="" type="checkbox"/> NON-OWNED AUTOS ONLY	Y		BAP435382812	01/01/2024	01/01/2025	COMBINED SINGLE LIMIT (Ea accident) \$1,000,000 BODILY INJURY (Per person) \$ BODILY INJURY (Per accident) \$ PROPERTY DAMAGE (Per accident) \$ \$
B	<input checked="" type="checkbox"/> UMBRELLA LIAB <input checked="" type="checkbox"/> OCCUR EXCESS LIAB <input type="checkbox"/> CLAIMS-MADE DED <input checked="" type="checkbox"/> RETENTION \$0			79894197	01/01/2024	01/01/2025	EACH OCCURRENCE \$5,000,000 AGGREGATE \$5,000,000 \$
A	WORKERS COMPENSATION AND EMPLOYERS' LIABILITY ANY PROPRIETOR/PARTNER/EXECUTIVE OFFICER/MEMBER EXCLUDED? <input checked="" type="checkbox"/> N (Mandatory in NH) If yes, describe under DESCRIPTION OF OPERATIONS below	Y/N	N/A	WC435382612	01/01/2024	01/01/2025	<input checked="" type="checkbox"/> PER STATUTE <input type="checkbox"/> OTH-ER E.L. EACH ACCIDENT \$1,000,000 E.L. DISEASE - EA EMPLOYEE \$1,000,000 E.L. DISEASE - POLICY LIMIT \$1,000,000

DESCRIPTION OF OPERATIONS / LOCATIONS / VEHICLES (ACORD 101, Additional Remarks Schedule, may be attached if more space is required)

RE: Bid #50-00145878 - Department of Purchasing

Jefferson Parish Purchasing Department, Jefferson Parish, its Districts Departments and Agencies under the direction of the Parish President and the Parish Council are included as Additional Insured when required by written contract, agreement or permit but only with respect to the General Liability and (See Attached Descriptions)

CERTIFICATE HOLDER

CANCELLATION

Jefferson Parish Purchasing
 Department
 200 Derbigny Street, Suite 400
 Gretna, LA 70053

SHOULD ANY OF THE ABOVE DESCRIBED POLICIES BE CANCELLED BEFORE THE EXPIRATION DATE THEREOF, NOTICE WILL BE DELIVERED IN ACCORDANCE WITH THE POLICY PROVISIONS.

AUTHORIZED REPRESENTATIVE

Chri P. Bennett

DESCRIPTIONS (Continued from Page 1)

Automobile Liability insurance and subject to the provisions and limitations of the policy.

General Liability and Automobile Liability policies are written on a primary and non-contributory basis when required by written contract, agreement or permit and subject to the provisions and limitations of the policy.

Waiver of subrogation applies to General Liability and Automobile Liability and Workers Compensation policies when required by written contract, agreement or permit and subject to the provisions and limitations of the policy.

Umbrella follows form.



WOMEN'S BUSINESS ENTERPRISE
NATIONAL COUNCIL

JOIN FORCES. SUCCEED TOGETHER.

hereby grants

National Women's Business Enterprise Certification

to

Economical Janitorial & Paper Supplies, LLC

who has successfully met WBENC's standards as a Women's Business Enterprise (WBE).

This certification affirms the business is woman-owned, operated and controlled and is valid through the date herein.

Certification Granted: September 30, 1998

Expiration Date: September 30, 2024

WBENC National Certification Number: 2005108408

NAICS: 424130, 423850
UNSPSC: 14000000, 14110000, 14111700, 47130000, 47131600, 47131604

WBENC National WBE Certification was processed and validated by Women's Business Enterprise Council - South, a WBENC Regional Partner Organization.

Authorized by Phala Mire, President Women's
Business Enterprise Council - South

WBENC SOUTH
WOMEN'S BUSINESS ENTERPRISE COUNCIL
JOIN FORCES. SUCCEED TOGETHER.



Great Lakes
Women's
Business
COUNCIL



WBENC METRONY

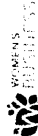
WBENC



WBECEAST

WBEGORV

WBENC PACIFIC



WBENC WEST

WBENC TEXAS



WOMEN'S BUSINESS ENTERPRISE
NATIONAL COUNCIL

JOIN FORCES. SUCCEED TOGETHER.

HEREBY GRANTS
WOMAN OWNED SMALL BUSINESS (WOSB) CERTIFICATION TO

Economical Janitorial & Paper Supplies, LLC

The identified small business is an eligible WOSB for the WOSB Program, as set forth in 13 C.F.R. part 127 and has been certified as such by an SBA approved Third Party Certifier pursuant to the Third Party Agreement, dated June 30, 2011, and available at www.sba.gov/wosb.

The WOSB Certification expires on the date herein unless there is a change to the SBA's regulation that makes the WOSB ineligible or there is a change in the WOSB that makes the WOSB ineligible. If either occurs, this WOSB Certification is immediately invalid. The WOSB must not misrepresent its certification status to any other party, including any local or State government or contracting official or the Federal government or any of its contracting officials.

Majority Female Owner: Suzie Migliore
NAICS: 424130, 423850 UNSPSC: 14000000, 14110000, 14111700, 47130000, 47131600, 47131604
Certification Number: W080245
Renewal Date: September 30, 2024
WOSB Regulation Expiration Date: 9/30/2026

Phala Mire, Women's Business Enterprise
Council - South President



Pamela Prince-Easton, WBENC President & CEO

Lakesha White, Vice President, Certification



#1

Customer Service: 1-888-GO-BETCO
Equipment Tech Support 1-877-856-5954
8AM - 5:30PM EST, Monday - Friday

pH7 Floor Cleaner



Neutral Daily Floor Cleaner Concentrate

This mild cleaner will emulsify and suspend dirt and grime from table tops to floors; from spray bottle to autoscrubber. Safe for use on most hard surfaces.

Features

Dissolves and removes a wide variety of soils, leaving floors film free
Neutral pH - won't attack, haze, or dull floor gloss
No foam - ideal for use in autoscrubbers, mop buckets and pails
Restores shine to resilient tile floors
Superior hard water performance

Available In

4 - 1 Gal. Bottles Item #13804-00

275 Gal. Disposable Tote Item #13827-00

55 Gal. Drum Item #13855-00

5 Gal Bag in Box Item #138B5-00

Directions for Use

Recommended for mopping or autoscrubbing finished floors. Can also be used as a spray and wipe cleaner on appliances, desks, plastic, stainless steel and painted surfaces.

1. Dilute 1 to 3 U.S. oz./U.S. gal. or 8 to 23 mL/L of water, depending on soil conditions.
2. Apply cleaning solution using a mop or autoscrubber.
3. Pick up the solution. Rinsing is not required except in very dirty situations.
4. Allow floor to dry thoroughly.

Tech Specs

Color	Yellow
Density	1.00
Detergency	Excellent
Emulsification	Excellent
Foaming	None
Phosphates	No
Anti-Scaling Agents	Yes
Fragrance	Lemon
Rinsability	Complete
pH	6.50 - 8.50
Solubility in Water	Complete
Warranty	2 years
Wetting	Very good

SAFETY DATA SHEET



pH7 Natural All Purpose Cleaner

Section 1. Identification

GHS product Identifier : pH7 Natural All Purpose Cleaner
Product code : 138
Other means of Identification : Not available.
Product type : Liquid.

Relevant identified uses of the substance or mixture and uses advised against

Identified uses	
General/Multi-Purpose Cleaner	
Uses advised against	Reason
For Industrial and Institutional Use Only	-

Supplier's details : Betco Corporation
400 Van Camp Road
Bowling Green, Ohio 43402
www.betco.com
888-462-3826

Emergency telephone number (with hours of operation) : Chemtrec (800) 424-9300 24 hour

Section 2. Hazards identification

OSHA/HCS status : While this material is not considered hazardous by the OSHA Hazard Communication Standard (29 CFR 1910.1200), this SDS contains valuable information critical to the safe handling and proper use of the product. This SDS should be retained and available for employees and other users of this product.

Classification of the substance or mixture : Not classified.

GHS label elements

Signal word : No signal word.
Hazard statements : No known significant effects or critical hazards.

Precautionary statements

Prevention : Not applicable.
Response : Not applicable.
Storage : Not applicable.
Disposal : Not applicable.
Hazards not otherwise classified : None known.

Section 3. Composition/information on ingredients

Substance/mixture : Mixture
Other means of Identification : Not available.

Section 3. Composition/information on ingredients

Ingredient name	%	CAS number
Alcohols, C9-11, ethoxylated	≤3	68439-46-3

Any concentration shown as a range is to protect confidentiality or is due to batch variation.

There are no additional ingredients present which, within the current knowledge of the supplier and in the concentrations applicable, are classified as hazardous to health or the environment and hence require reporting in this section.

Occupational exposure limits, if available, are listed in Section 8.

Section 4. First aid measures

Description of necessary first aid measures

- Eye contact** : Immediately flush eyes with plenty of water, occasionally lifting the upper and lower eyelids. Check for and remove any contact lenses. Get medical attention if irritation occurs.
- Inhalation** : Remove victim to fresh air and keep at rest in a position comfortable for breathing. Get medical attention if symptoms occur.
- Skin contact** : Flush contaminated skin with plenty of water. Remove contaminated clothing and shoes. Get medical attention if symptoms occur.
- Ingestion** : Wash out mouth with water. Remove victim to fresh air and keep at rest in a position comfortable for breathing. If material has been swallowed and the exposed person is conscious, give small quantities of water to drink. Do not induce vomiting unless directed to do so by medical personnel. Get medical attention if symptoms occur.

Most important symptoms/effects, acute and delayed

Potential acute health effects

- Eye contact** : No known significant effects or critical hazards.
- Inhalation** : No known significant effects or critical hazards.
- Skin contact** : No known significant effects or critical hazards.
- Ingestion** : No known significant effects or critical hazards.

Over-exposure signs/symptoms

- Eye contact** : No specific data.
- Inhalation** : No specific data.
- Skin contact** : No specific data.
- Ingestion** : No specific data.

Indication of immediate medical attention and special treatment needed, if necessary

- Notes to physician** : Treat symptomatically. Contact poison treatment specialist immediately if large quantities have been ingested or inhaled.
- Specific treatments** : No specific treatment.
- Protection of first-aiders** : No action shall be taken involving any personal risk or without suitable training.

See toxicological information (Section 11)

Section 5. Fire-fighting measures

Extinguishing media

- Suitable extinguishing media** : Use an extinguishing agent suitable for the surrounding fire.
- Unsuitable extinguishing media** : None known.

Specific hazards arising : In a fire or if heated, a pressure increase will occur and the container may burst.

Section 5. Fire-fighting measures

Hazardous thermal decomposition products : No specific data.

Special protective actions for fire-fighters : Promptly isolate the scene by removing all persons from the vicinity of the incident if there is a fire. No action shall be taken involving any personal risk or without suitable training.

Special protective equipment for fire-fighters : Fire-fighters should wear appropriate protective equipment and self-contained breathing apparatus (SCBA) with a full face-piece operated in positive pressure mode.

Section 6. Accidental release measures

Personal precautions, protective equipment and emergency procedures

For non-emergency personnel : No action shall be taken involving any personal risk or without suitable training. Evacuate surrounding areas. Keep unnecessary and unprotected personnel from entering. Do not touch or walk through spilled material. Put on appropriate personal protective equipment.

For emergency responders : If specialized clothing is required to deal with the spillage, take note of any information in Section 8 on suitable and unsuitable materials. See also the information in "For non-emergency personnel".

Environmental precautions : Avoid dispersal of spilled material and runoff and contact with soil, waterways, drains and sewers. Inform the relevant authorities if the product has caused environmental pollution (sewers, waterways, soil or air).

Methods and materials for containment and cleaning up

Small spill : Stop leak if without risk. Move containers from spill area. Dilute with water and mop up if water-soluble. Alternatively, or if water-insoluble, absorb with an inert dry material and place in an appropriate waste disposal container. Dispose of via a licensed waste disposal contractor.

Large spill : Stop leak if without risk. Move containers from spill area. Prevent entry into sewers, water courses, basements or confined areas. Wash spillages into an effluent treatment plant or proceed as follows. Contain and collect spillage with non-combustible, absorbent material e.g. sand, earth, vermiculite or diatomaceous earth and place in container for disposal according to local regulations (see Section 13). Dispose of via a licensed waste disposal contractor. Note: see Section 1 for emergency contact information and Section 13 for waste disposal.

Section 7. Handling and storage

Precautions for safe handling

Protective measures : Put on appropriate personal protective equipment (see Section 8).

Advice on general occupational hygiene : Eating, drinking and smoking should be prohibited in areas where this material is handled, stored and processed. Workers should wash hands and face before eating, drinking and smoking. Remove contaminated clothing and protective equipment before entering eating areas. See also Section 8 for additional information on hygiene measures.

Conditions for safe storage, including any incompatibilities : Store in accordance with local regulations. Store in original container protected from direct sunlight in a dry, cool and well-ventilated area, away from incompatible materials (see Section 10) and food and drink. Keep container tightly closed and sealed until ready for use. Containers that have been opened must be carefully resealed and kept upright to prevent leakage. Do not store in unlabeled containers. Use appropriate containment to avoid environmental contamination. See Section 10 for incompatible materials before handling or use.

Section 8. Exposure controls/personal protection

Control parameters

Occupational exposure limits

Ingredient name	Exposure limits
Alcohols, C9-11, ethoxylated	None.

- Appropriate engineering controls** : Good general ventilation should be sufficient to control worker exposure to airborne contaminants.
- Environmental exposure controls** : Emissions from ventilation or work process equipment should be checked to ensure they comply with the requirements of environmental protection legislation. In some cases, fume scrubbers, filters or engineering modifications to the process equipment will be necessary to reduce emissions to acceptable levels.

Individual protection measures

- Hygiene measures** : Wash hands, forearms and face thoroughly after handling chemical products, before eating, smoking and using the lavatory and at the end of the working period. Appropriate techniques should be used to remove potentially contaminated clothing. Wash contaminated clothing before reusing. Ensure that eyewash stations and safety showers are close to the workstation location.
- Eye/face protection** : Safety eyewear complying with an approved standard should be used when a risk assessment indicates this is necessary to avoid exposure to liquid splashes, mists, gases or dusts. If contact is possible, the following protection should be worn, unless the assessment indicates a higher degree of protection: safety glasses with side-shields.
- Skin protection**
- Hand protection** : Chemical-resistant, impervious gloves complying with an approved standard should be worn at all times when handling chemical products if a risk assessment indicates this is necessary.
- Body protection** : Personal protective equipment for the body should be selected based on the task being performed and the risks involved and should be approved by a specialist before handling this product.
- Other skin protection** : Appropriate footwear and any additional skin protection measures should be selected based on the task being performed and the risks involved and should be approved by a specialist before handling this product.
- Respiratory protection** : Based on the hazard and potential for exposure, select a respirator that meets the appropriate standard or certification. Respirators must be used according to a respiratory protection program to ensure proper fitting, training, and other important aspects of use.

Section 9. Physical and chemical properties

Appearance

- Physical state** : Liquid.
- Color** : Yellowish.-Green. Clear.
- Odor** : Lemon-like.
- Odor threshold** : Not available.
- pH** : 6.5 to 8.5
- Melting point** : Not available.
- Boiling point** : Not available.
- Flash point** : Closed cup: >150°C (>302°F)
- Evaporation rate** : Not available.
- Flammability (solid, gas)** : Not available.
- Lower and upper explosive (flammable) limits** : Not available.

Section 9. Physical and chemical properties

Vapor density	: Not available.
Relative density	: 1.0033
Solubility	: Easily soluble in the following materials: cold water and hot water.
Solubility in water	: Not available.
Partition coefficient: n-octanol/water	: Not available.
Auto-ignition temperature	: Not available.
Decomposition temperature	: Not available.
Viscosity	: Not available.
Flow time (ISO 2431)	: Not available.

Section 10. Stability and reactivity

Reactivity	: No specific test data related to reactivity available for this product or its ingredients.
Chemical stability	: The product is stable.
Possibility of hazardous reactions	: Under normal conditions of storage and use, hazardous reactions will not occur.
Conditions to avoid	: No specific data.
Incompatible materials	: Not available.
Hazardous decomposition products	: Under normal conditions of storage and use, hazardous decomposition products should not be produced.

Section 11. Toxicological information

Information on toxicological effects

Acute toxicity

Product/Ingredient name	Result	Species	Dose	Exposure
Alcohols, C9-11, ethoxylated	LD50 Oral	Rat	1378 mg/kg	-

Irritation/Corrosion

Not available.

Sensitization

Not available.

Mutagenicity

Not available.

Carcinogenicity

Not available.

Reproductive toxicity

Not available.

Teratogenicity

Not available.

Specific target organ toxicity (single exposure)

Not available.

Specific target organ toxicity (repeated exposure)

Section 11. Toxicological information

Aspiration hazard

Not available.

Information on the likely routes of exposure : Routes of entry anticipated: Oral, Dermal.
Routes of entry not anticipated: Inhalation.

Potential acute health effects

Eye contact : No known significant effects or critical hazards.
Inhalation : No known significant effects or critical hazards.
Skin contact : No known significant effects or critical hazards.
Ingestion : No known significant effects or critical hazards.

Symptoms related to the physical, chemical and toxicological characteristics

Eye contact : No specific data.
Inhalation : No specific data.
Skin contact : No specific data.
Ingestion : No specific data.

Delayed and immediate effects and also chronic effects from short and long term exposure

Short term exposure

Potential immediate effects : Not available.
Potential delayed effects : Not available.

Long term exposure

Potential immediate effects : Not available.
Potential delayed effects : Not available.

Potential chronic health effects

Not available.

General : No known significant effects or critical hazards.
Carcinogenicity : No known significant effects or critical hazards.
Mutagenicity : No known significant effects or critical hazards.
Teratogenicity : No known significant effects or critical hazards.
Developmental effects : No known significant effects or critical hazards.
Fertility effects : No known significant effects or critical hazards.

Numerical measures of toxicity

Acute toxicity estimates

Not available.

Section 12. Ecological information

Toxicity

Product/Ingredient name	Result	Species	Exposure
Alcohols, C9-11, ethoxylated	Acute EC50 5.36 mg/l Fresh water	Crustaceans - Ceriodaphnia dubia - Neonate	48 hours
	Acute EC50 2686 µg/l Fresh water	Daphnia - Daphnia magna - Neonate	48 hours

Section 12. Ecological information

Persistence and degradability

Not available.

Bioaccumulative potential

Not available.

Mobility in soil

Soil/water partition coefficient (K_{oc}) : Not available.

Other adverse effects : No known significant effects or critical hazards.

Section 13. Disposal considerations

Disposal methods : The generation of waste should be avoided or minimized wherever possible. Disposal of this product, solutions and any by-products should at all times comply with the requirements of environmental protection and waste disposal legislation and any regional local authority requirements. Dispose of surplus and non-recyclable products via a licensed waste disposal contractor. Waste should not be disposed of untreated to the sewer unless fully compliant with the requirements of all authorities with jurisdiction. Waste packaging should be recycled. Incineration or landfill should only be considered when recycling is not feasible. This material and its container must be disposed of in a safe way. Empty containers or liners may retain some product residues. Avoid dispersal of spilled material and runoff and contact with soil, waterways, drains and sewers.

Section 14. Transport information

	DOT Classification	TDG Classification	Mexico Classification	ADR/RID	IMDG	IATA
UN number	Not regulated.	Not regulated.	Not regulated.	Not regulated.	Not regulated.	Not regulated.
UN proper shipping name	-	-	-	-	-	-
Transport hazard class(es)	-	-	-	-	-	-
Packing group	-	-	-	-	-	-
Environmental hazards	No.	No.	No.	No.	No.	No.

Special precautions for user : **Transport within user's premises:** always transport in closed containers that are upright and secure. Ensure that persons transporting the product know what to do in the event of an accident or spillage.

Transport in bulk according to Annex II of MARPOL and the IBC Code : Not available.

Section 15. Regulatory information

U.S. Federal regulations : **TSCA 4(a) proposed test rules:** Quaternary ammonium compounds, benzyl-C12-16-alkyldimethyl, chlorides
TSCA 5(a)2 proposed significant new use rules: 5-chloro-2-methyl-2H-isothiazol-3-one
TSCA 8(a) PAIR: citronellal
TSCA 8(a) CDR Exempt/Partial exemption: Not determined
Clean Water Act (CWA) 307: diethyl phthalate
Clean Water Act (CWA) 311: sodium hydroxide; Formaldehyde, solution

Clean Air Act Section 112 : Listed

(b) Hazardous Air Pollutants (HAPs)

Clean Air Act Section 602 Class I Substances : Not listed

Clean Air Act Section 602 Class II Substances : Not listed

DEA List I Chemicals (Precursor Chemicals) : Not listed

DEA List II Chemicals (Essential Chemicals) : Not listed

SARA 302/304

Composition/Information on Ingredients

Name	%	EHS	SARA 302 TPQ		SARA 304 RQ	
			(lbs)	(gallons)	(lbs)	(gallons)
formaldehyde	<0.1	Yes.	500	73.9	100	14.8

SARA 304 RQ : 500000000 lbs / 227000000 kg [59769815.4 gal / 226253363.9 L]

SARA 311/312

Classification : Not applicable.

Composition/Information on Ingredients

Name	%	Classification
Alcohols, C9-11, ethoxylated	≤3	EYE IRRITATION - Category 2A

State regulations

Massachusetts : None of the components are listed.

New York : None of the components are listed.

New Jersey : None of the components are listed.

Pennsylvania : None of the components are listed.

California Prop. 65

This product does not require a Safe Harbor warning under California Prop. 65.

International regulations

Chemical Weapon Convention List Schedules I, II & III Chemicals

Not listed.

Montreal Protocol

Not listed.

Stockholm Convention on Persistent Organic Pollutants

Not listed.

Section 15. Regulatory information

Not listed.

UNECE Aarhus Protocol on POPs and Heavy Metals

Not listed.

Inventory list

Australia	: Not determined.
Canada	: Not determined.
China	: Not determined.
Europe	: At least one component is not listed.
Japan	: Japan Inventory (ENCS): Not determined. Japan Inventory (ISHL): Not determined.
Malaysia	: Not determined
New Zealand	: Not determined.
Philippines	: Not determined.
Republic of Korea	: Not determined.
Taiwan	: Not determined.
Thailand	: Not determined.
Turkey	: Not determined.
United States	: All components are listed or exempted.
Viet Nam	: Not determined.

Section 16. Other information

Hazardous Material Information System (U.S.A.)

Health	/ 0
Flammability	1
Physical hazards	0

Caution: HMIS® ratings are based on a 0-4 rating scale, with 0 representing minimal hazards or risks, and 4 representing significant hazards or risks. Although HMIS® ratings and the associated label are not required on SDSs or products leaving a facility under 29 CFR 1910.1200, the preparer may choose to provide them. HMIS® ratings are to be used with a fully implemented HMIS® program. HMIS® is a registered trademark and service mark of the American Coatings Association, Inc.

The customer is responsible for determining the PPE code for this material. For more information on HMIS® Personal Protective Equipment (PPE) codes, consult the HMIS® Implementation Manual.

National Fire Protection Association (U.S.A.)



Reprinted with permission from NFPA 704-2001, Identification of the Hazards of Materials for Emergency Response Copyright ©1997, National Fire Protection Association, Quincy, MA 02269. This reprinted material is not the complete and official position of the National Fire Protection Association, on the referenced subject which is represented only by the standard in its entirety.

Copyright ©2001, National Fire Protection Association, Quincy, MA 02269. This warning system is intended to be interpreted and applied only by properly trained individuals to identify fire, health and reactivity hazards of chemicals. The user is referred to certain limited number of chemicals with recommended classifications in NFPA 49 and NFPA 325, which would be used as a guideline only. Whether the chemicals are classified by NFPA or not, anyone using the 704 systems to classify chemicals does so at their own risk.

Procedure used to derive the classification

Section 16. Other information

Classification	Justification
Not classified.	

History**Date of printing** : 5/29/2020**Date of issue/Date of revision** : 5/29/2020**Date of previous issue** : No previous validation**Version** : 1

Key to abbreviations : ATE = Acute Toxicity Estimate
BCF = Bioconcentration Factor
GHS = Globally Harmonized System of Classification and Labelling of Chemicals
IATA = International Air Transport Association
IBC = Intermediate Bulk Container
IMDG = International Maritime Dangerous Goods
LogPow = logarithm of the octanol/water partition coefficient
MARPOL = International Convention for the Prevention of Pollution From Ships, 1973 as modified by the Protocol of 1978. ("Marpol" = marine pollution)
UN = United Nations

References : Not available.**▣ Indicates information that has changed from previously issued version.****Notice to reader**

To the best of our knowledge, the information contained herein is accurate. However, neither the above-named supplier, nor any of its subsidiaries, assumes any liability whatsoever for the accuracy or completeness of the information contained herein.

Final determination of suitability of any material is the sole responsibility of the user. All materials may present unknown hazards and should be used with caution. Although certain hazards are described herein, we cannot guarantee that these are the only hazards that exist.

#2

Technical data and equipment.

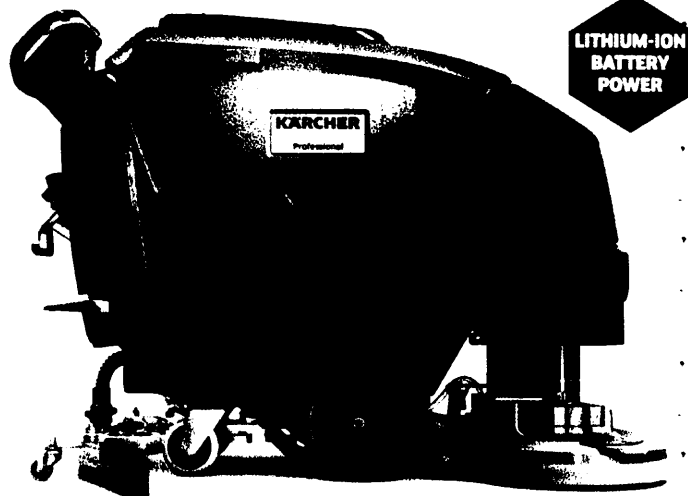
		BD 50/50 C BP CLASSIC	BD 50/55 W BP CLASSIC	BD 70/75 W BP CLASSIC	BD 80/100 W BP CLASSIC
TECHNICAL SPECIFICATIONS					
Cleaning path/width	in	20	20	28	32
Brush type	cylindrical/ disc/pad	pad	pad	pad	pad
Brush quantity	units	1	1	2	2
Brush diameter	in	20	20	14	16
Suction bar (squeegee) width	in	33	33.5	41	43
Drive	pad-assist/ traction	pad-assist	traction	traction	traction
Solution/recovery capacity	gal	13.2 / 13.2	14.5 / 14.5	19.8 / 19.8	26.4 / 26.4
Theoretical/practical productivity	sq. ft/hr	21,530 / 13,995	27,500 / 17,500	30,645 / 19,920	35,025 / 22,770
Operating noise level	dBA	66	65	63	63
Battery charger	shelf/on board	shelf	shelf	shelf	shelf
Brush contact pressure	lbs	59 – 62	59	66 – 150	88 – 200
Brush speed	rpm	180	180	180	180
Vac motor rating	watts	500	500	500	500
Vac motor suction	cfm	51	51	51	51
Waterlift	in of water	48	48	64	64
Weight with batteries	lbs	306	379	512 wet / 556 AGM	661 wet / 705 AGM
Dimensions (LxWxH)	in	47 x 21 x 39	52 x 22.5 x 42	57 x 30 x 42	59 x 33 x 42

EQUIPMENT

Order No.	Description
9.841-369.0	BD 50/50 C Bp Classic, pad driver, 24V/105 Ah wet batteries, shelf charger
9.841-370.0	BD 50/50 C Bp Classic, pad driver, 24V/100 Ah AGM batteries, shelf charger
9.998-002.0	BD 50/55 W Bp Classic, 24V/100Ah AGM batteries, shelf charger
9.841-466.0	BD 70/75 W Bp Classic, 185 Ah wet batteries, shelf charger
9.841-467.0	BD 70/75 W Bp Classic, 190 Ah AGM batteries, shelf charger
9.841-240.0	BD 70/75 W Bp Classic, 24V Lithium, shelf charger
9.841-456.0	BD 80/100 W Bp Classic, 295 Ah wet batteries, shelf charger
9.841-457.0	BD 80/100 W Bp Classic, 285 Ah AGM batteries, shelf charger
9.808-180.0	BD 80/100 W Bp Classic, 24V Lithium, shelf charger

You can count on our easy-to-use Classics.

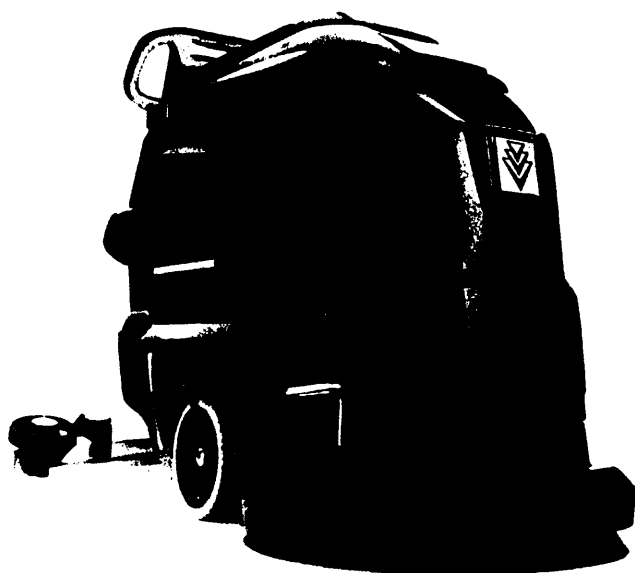
Designed to meet all of your scrubbing needs without breaking the bank. With the BD 70/75 W Bp Classic, BD 80/100 W Bp Classic, BD 50/55 W Bp Classic and BD 50/50 C Bp Classic scrubbers, Kärcher presents its Classic Scrubber line. These machines are battery-operated, have a very solid construction, and are characterized by their simple operations.



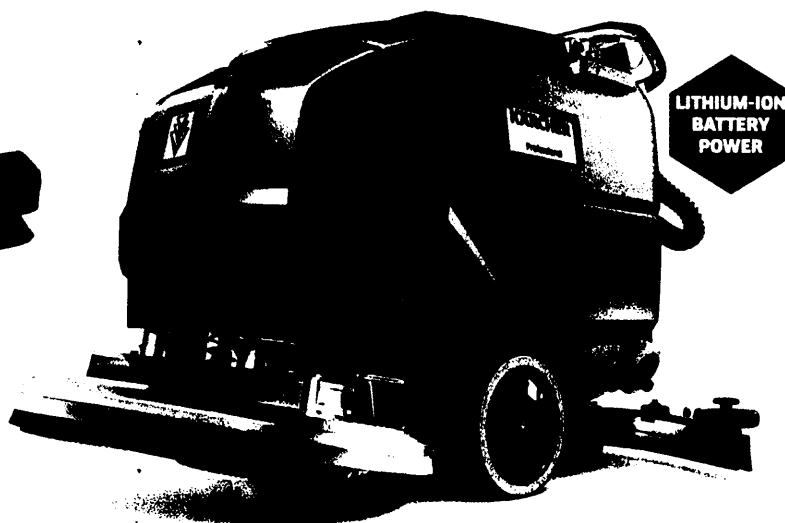
BD 80/100 W BP CLASSIC



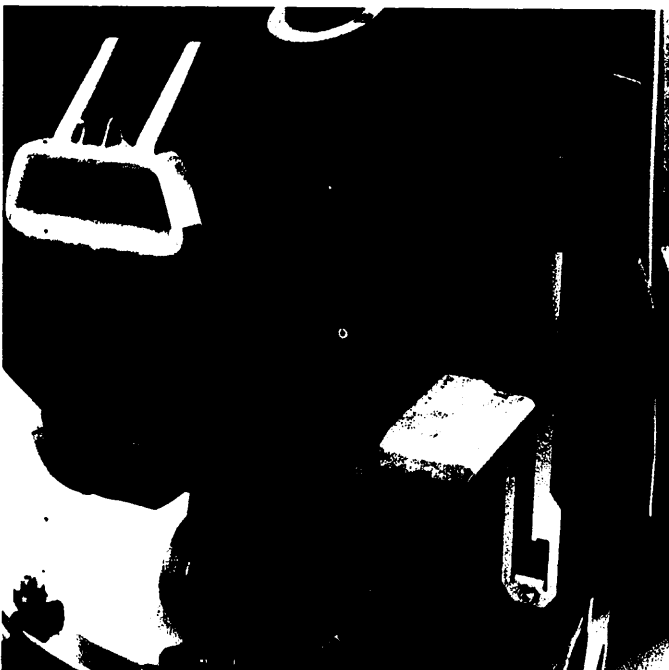
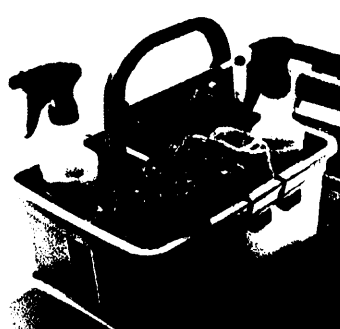
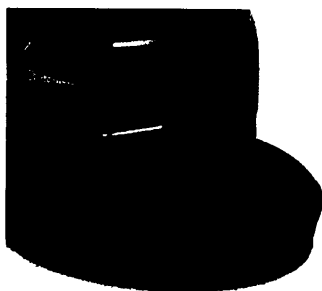
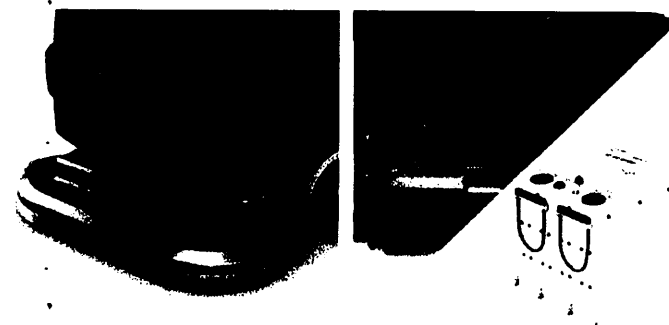
BD 50/55 W BP CLASSIC



BD 50/50 C BP CLASSIC



BD 70/75 W BP CLASSIC



1 Easy to use

Classic scrubbers are easy to operate, allowing shorter training times, immediate familiarity with the machine, and less operating errors

2 Robust scrub deck

On the BD 80/100, BD 70/75 & BD 50/55 the components such as the scrub deck and squeegee are made of durable aluminum which affords the user longer life in tough applications.

3 Wet/AGM/Lithium Ion Battery Options

A shelf charger is included with all three battery options.

Advantages of Lithium

Lithium has longer run times than other battery types.

Lithium is 5x faster charging lead acid.

Unlimited opportunity charging - providing productivity as the application demands.

Integral battery management system (BMS)

5-year unlimited cycle life warranty.

4 Adjustable brush pressure

The BD 80/100 & BD 70/75 offer adjustable brush pressure for much greater flexibility for cleaning on all types of floors. With up to 200 lbs of down pressure.

5 No-tool pad/brush change

Rigid brush T-handle enables quick change from pad to brush.

6 Home base

Home base kit carries essentials, resulting in less trips to the supply closet.

Accessories

BD 50/50 C BP CLASSIC ACCESSORIES

Order No.	Description	Order No.	Description
■ 4.762-534.0	Pad driver, 19-inch, features a quick-change coupling and centerlock	□ 6.369-077.0	Black pad, 20-inch, hard, 5 pack
■ 4.777-179.0	V-Shaped squeegee, 35-inch, with caster, polyurethane	□ 6.369-468.0	Beige disc pad, 20-inch, light grit, 5 pack
□ 4.905-027.0	Disc brush, soft, made of natural fibers	□ 6.371-146.0	Beige disc pad, 20-inch, soft, natural hair
□ 4.905-029.0	Brush, hard black	□ 8.641-483.0	Charger for wet batteries
□ 4.905-026.0	Disc brush, medium, red	□ 8.629-377.0	Charger for AGM batteries
□ 6.369-079.0	Red disc pad, 20-inch, medium soft red, 5-pack	□ 4.777-401.0	Squeegee, 33.5-inch, straight, oil-resistant transparent polyurethane
□ 6.369-078.0	Green disc pad, 20-inch, aggressive, 5-pack		

BD 50/55 W BP CLASSIC ACCESSORIES

Order No.	Description	Order No.	Description
■ 4.778-008.0	Squeegee, 33.5-inch, parabolic	■ 4.762-534.0	Pad driver
■ 4.400-011.0	Suction blades, 33-inch, red	□ 4.070-075.0	Universal hook kit
□ 4.400-005.0	Suction blades, 33-inch, transparent	□ 4.039-271.0	Mop holder
□ 2.644-228.0	Add-on kit deflector roll squeegee, stackable	□ 5.035-488.0	Home-Base adapter
□ 4.905-026.0	Disc brush, medium	□ 6.980-077.0	Double hook
□ 4.905-028.0	Disc brush, very soft	□ 6.980-078.0	Holder handhold grey
□ 4.905-027.0	Disc brush, soft	□ 6.980-080.0	Holder bottle
□ 4.905-029.0	Disc brush, hard		

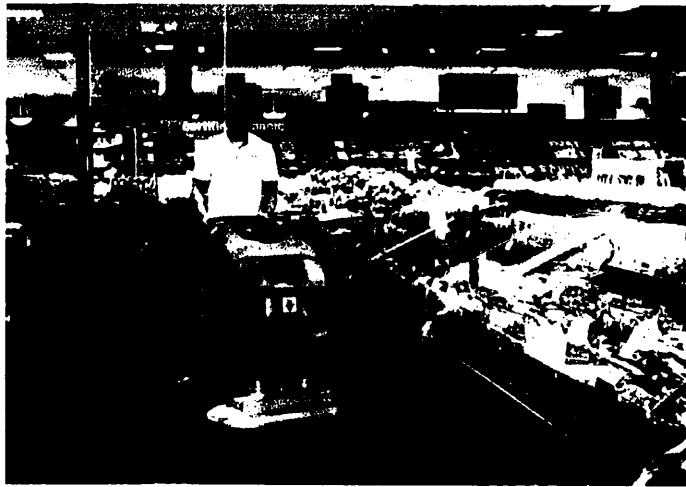
BD 70/75 W BP CLASSIC ACCESSORIES

Order No.	Description	Order No.	Description
■ 4.762-590.0	Pad drive board STRONG (standard)	□ 2.639-290.0	Surface preparation pad brown, hard, 2 pack
■ 6.369-003.0	Pad red, medium-soft (standard), 5 pack	□ 6.371-021.0	Melamine pad white/grey, 2 pack
■ 8.663-291.0	Battery 6V/190 Ah AGM (standard with 9.841-467.0) (4 REQUIRED)	□ 4.905-010.0	Disc brush red, medium
■ 8.622-835.0	Battery 6V/185 Ah wet (standard with 9.841-466.0) (4 REQUIRED)	□ 4.905-013.0	Disc brush black, hard
■ 8.643-374.0	Shelf charger for 190Ah AGM batteries	□ 4.905-012.0	Disc brush nature, soft
■ 8.644-222.0	Shelf charger for 185Ah Wet batteries	□ 4.905-011.0	Disc brush white
■ 4.777-108.0	Squeegee, 1030mm (standard w/suction blades)	□ 4.037-145.0	Suction blades, 1030 mm (polyurethane)
■ 4.037-144.0	Suction blades, 1030mm, blue (standard)	□ 9.753-088.0	Squeegee transport plate
□ 6.369-002.0	Pad green, medium-hard, 5 pack	□ 2.644-140.0	Warning beacon add-on kit
□ 6.369-001.0	Pad black, hard, 5 pack	□ 2.644-168.0	Set Stackable deflector rollers brush head

BD 80/100 W BP CLASSIC ACCESSORIES

Order No.	Description	Order No.	Description
■ 4.762-591.0	Pad drive board (standard)	■ 4.037-138.0	Suction blades, 1230 mm, blue (standard)
■ 6.371-332.0	Pad, red, medium-soft (standard)	□ 4.905-000.0	Disc brush, red, medium
■ 8.629-184.0	Battery, 6V/285 Ah AGM (standard with 9.841-457.0)	□ 4.905-032.0	Disc brush, black, hard
■ 8.622-837.0	Battery, 6V/271 Ah wet (standard with 9.841-456.0)	□ 4.905-031.0	Disc brush, natural, soft
■ 8.644-818.0	Battery, Discover 24V Lithium Ion	□ 4.905-030.0	Disc brush, white, very soft
■ 8.643-373.0	Shelf charger for wet batteries (standard with 9.841-456.0)	□ 4.037-140.0	Suction blades 1230 mm, transparent
■ 8.643-374.0	Shelf charger for AGM batteries (standard with 9.841-457.0)	□ 9.753-088.0	Squeegee transport plate
■ 4.777-102.0	Squeegee, 1100 mm (standard with suction blades)	□ 2.644-140.0	Warning beacon add-on kit

■ Included □ Optional



Please contact us for more information:

Kärcher U.S.A.

6398 N. Kärcher Way
Aurora, CO 80019
U.S.A.

Tel. 888-805-9852
Fax 800-248-8409



www.karcher.com/us/professional



KarcherUSA



@kaercher_us_professional



karchercommercial



karcher-us



KarcherUSA