

Access Control and Gate Systems
Sound and Video
Automation and Control Systems
Engineering, Consulting and Design

By performing the installation of all the above mentioned work, it allows SSS, Inc. to package Special System contracts for schools, hospitals, detention, convention centers, nursing homes, multi-family, high-rise, commercial, casinos, banks, plants, residential and industrial projects. Simpson Security Systems, Inc. has completed more than 100 State, Parish, County and Federal Detention projects since 1991 and has over 80 years of combined detention experience with listed key employees.

Simpson Security Systems, Inc. is licensed by the state of Louisiana, Mississippi, Alabama and Tennessee. These states are nationally known for their strict licensing requirements and knowledge to practice Life Safety. All licensing in the state of Louisiana, if any required are in possession of Simpson Security.

Simpson Security Systems, Inc.

Louisiana State Contractors License #36465 Building Construction

*Fire Protection

*Communications

*Security Electronics

Louisiana State Security & Fire Protection License F-952

National Institute Engineering Technology-Keith B. Simpson CT # 88939

State of Mississippi Board of Contractors 21375

State of Alabama Department of Insurance Fire Marshal's Office A-0505

Tunica Biloxi Gaming Commission Gaming License Number N1685

Tennessee

Members of:

Association of General Contractors

National Fire Protection Association

Louisiana Automatic Fire Alarm Association

Louisiana Burglar and Fire Alarm Association

BISCI-Telecommunications Association

Central Louisiana Chamber of Commerce

Better Business Bureau of Central Louisiana

Central Louisiana Home Builders Association

A Length of time that Installer has performed services similar to those required for this project: Simpson Security Systems, Inc. has been performing services similar, to those required for this project for 20 years. Please note that Keith Simpson and others have more extensive detention experience from previous employment with Metroplex Controls and other firms. Simpson offers the following references from the projects and encourages the decision maker to contact as many as desired to confirm the abilities and qualifications of Simpson Security. Please note that the below names are people directly responsible for these projects and are knowledgeable of the obstacles Simpson Security had to overcome to produce a top quality system in a timely and professional manner.

Key Employees

Please see key personnel hire dates for Simpson Security employees, and past relative experience. Noted for each key employee is Simpson Security employment tenure and specific detention experience. They hold additional experience in other fields of related work with communications and construction. Please note that the majority of Simpson's team members are experienced in the design of CCTV and Security system and have an excellent understanding of the Contract Documents for the Project, as well as systems issues which are critical to the end user of the completed facility. We believe that the Simpson employees assigned to this project team have more than enough experience to effectively complete the work and our individual employees comprise a solid capable team that will complete the project to the satisfaction of everyone involved. Each key employee listed has a minimum of 10 years experience in Integrated Security, plus Communications, Fire Alarm, CCTV, Security Electronics, MATV, Fiber Optic and PLC based work. Please reference the supplemental information below for clarification to our listed key employees and their experience. All the employees listed later in this submittal are prepared to mobilize when needed exclusively for the Point Coupee School Board CCTV and Security System project. All device and equipment installation will be accomplished by well seasoned SSS Technicians.

Definition of task

Please see each key employee history and a delineation of task and their responsibilities are listed. Each employee is assigned a portion of the project and is explained on each employee profile.

State and National Customer List:

U.S. Army	Wackenhut Corrections
U.S. Marshal	Angola State Prison
U.S. Post Office	Federal Bureau of Prisons-Oakdale/Pollock
Federal Bureau of Investigations	England Air Force Base
Louisiana Industries	Louisiana College
Proctor & Gamble	Columbia Health Corp.
Boise Cascade	Northwestern State University
International Paper	United Parcel Service
Airborne Express	Woolworth Corp.
Borden, Inc.	U.S. Army Corp. of Engineers
National Guard	Louisiana State University
Morse Diesel International	Louisiana State Police
Rapides Parish School Board	Concordia Parish School Board
Allen Parish School Board	Avoyelles Parish School Board
Grant Parish School Board	Lafayette Parish School Board
Immigration and Naturalization Service	Federal Aviation Administration
U.S. Forestry Service	Central Louisiana Utility Company
South Central Bell Services	Rapides Parish Sheriffs Department
Allen Parish Sheriffs Department	Sabine Parish Sheriffs Department
Avoyelles Parish Sheriffs	Department Barksdale Air Base
Grand Casino Inc.	State of Louisiana-Purchasing
U.S. Department of Energy	DynMcDermott Petroleum
Isle Of Capri Casino	Coushatta Tribe Casino
U. S. Army-Fort Polk	CLECO
Raytheon	Caddell Construction Company
The Clark Construction Group	Turner Construction
Flintco Constructive Solutions	FCI-Pollock
USP-Pollock	USP-Coleman
Wal-Mart	Fort Polk- US Army

Louisiana State University LSU
FDC-Oakdale
US Air Force Civil Air Patrol

Department of Homeland Security
USP-Lompoc
The US State Department-Bagdad Iraq

1. Name and Roles of Employees for submitted Projects

Keith B. Simpson-SET
President/CEO
Construction Manager
Simpson Security Employment 26 years

Keith has 30 years experience in Integrated Security Electronics and Special Systems work and the founder of the firm. Keith worked for Metroplex Control and Security Systems, Inc. of Dallas TX. His duties started as installation technician where school and training at Devry Institute were provided. Business classes at Richmond College included job costing and business finance. He was promoted to Senior Field Supervisor and he was installation manager of this Fortune 500 listed company. His duties consisted of Engineering and Design, AutoCAD, Project Managing, Scheduling with CPM charts, Bar Charts, Bids, Sales and Purchasing. Keith's duties will include Manager, Design/Engineer and CPM Charts. Keith was Project Manager and Project Superintendent for many large Integrated Security Electronics projects while employed by MCS, Inc. Keith was assigned personally to Wakenhut Corrections. MCS, Inc. exclusively completes most national projects for this company. Keith is the qualifying agent and NICET Engineer for all licensing for fire, building construction, security for all States.

Kevin Simpson CPA
Vice-President/CFO
Simpson Security Systems, Inc. employed for 20 years
Project Finance & Scheduler-All Projects

Graduated with a B.S. in Business Administration from Louisiana State University in Baton Rouge, La. 1985. Obtained his Series Seven License and Certified Financial Planner designation while working for American Express Financial Corporation. During this time he continued his finance education and he received a B.S. in Accounting from LSU in 1993. He accepted a job offer from Hannis T. Bourgeois & Co., a CPA firm in Baton Rouge where he became a licensed Certified Public Accountant. As a consultant for SSS, Inc. from inception, Kevin decided to join the firm and becoming Vice-President/CFO. Kevin's responsibilities include all finances, budgets, certified payroll for government projects overseeing receivables and payables.

B.A. Business Administration 1985
B.A. Accounting 1993
Certified Public Accountant
Certified Financial Planner

Joey Wiley
Security Division-Project Manager
Simpson Security Systems, Inc. employed 19 years
USP-Pollock, USP-II Coleman, FCI-Pollock, FCI-Aliceville, FCI-Forrest City, USP-Lompoc, ICE-Oakdale, FDC-Oakdale, FCI-Oakdale FCI-Aliceville

Joeys past experience was as an electrician in commercial and industrial related projects including Procter & Gamble. Joey has extensive knowledge in Scheduling and Project Management. He has acquired a vast knowledge of control voltage skills, which has earned him a management position as Security Manager for SSS, Inc. and has held that position for over 9 years. Joey has (21) years experience in Security Electronics installation, electrical and Integrated Electronics field. Joey has installed Control, CCTV and Door Controls in (6) FBOP projects, (7) State or County Detention projects and Perimeter Security Systems for the DOD, US Army, US Air Force and was instrumental in securing some facilities that SSS did not install.

OSHA Certifications 101, 2003
Louisiana State Security & Fire License #E5052
Allen Bradley PLC SLC-5

Factory Trained For:
Radionics 9112, 6112, 2112, Redi-Key
Vicon- Matrix 66, PTZ
Dukane, Bogen, Pelco
OCC
Data/Fiber Certified Leviton, AMP, IBM Token Ring, OCC
Magel Senstar FPS-5 Perimeter Security System
Omron PLC
InduSoft

SSS, Inc.-Senior Technician Team

Sam Canoe-Security Supervisor
Experience: Nine Years; Employed by SSS for Nine Years
Louisiana State Security & Fire License # E5029
FCI-Aliceville, Vicon Matrix, FCI-Pollock Camp, USP-II Coleman, FCI-Pollock-Pelco-Vicon
Kollector
NICE DVRS Training Pending

James Ray-Security Technician
Experience: Eight Years; Employed by SSS for Eight Years
Louisiana State Security & Fire License #E5704
FCI-Pollock Camp, FDC-Oakdale, FCI-Oakdale, FCI-Pollock

(This does not constitute all Technicians-These are seasoned SSS Techs currently assigned to the project)

3.Trade References:

4.1.1 Name: Graybar
Address: P. O. Box 840458, Dallas, Tx. 75284
Telephone: 314-573-5514

4.1.2 Name: Pelco

Address: 3500 Pelco Way, Clovis, CA. 93612-5699

Telephone: 559-388-3417

4.1.3 Name: Anixter

Address: P. O. box 847428, Dallas, Tx. 75284-7428

Telephone: 972-353-7114

4.1.4 Name: SPW

Address: 3307 Kingman Street, Metairie, La. 70006

Telephone: 504-779-2696

4.1.5 Name: Tri-Ed Distribution

Address: 13831 Seaboard Circle, Garden Grove, CA 92843

Telephone: 1-877-884-8858

Digital Sentry® DSSRV2 Network Video Recorder

H.264 CAPABILITY, FULLY SCALABLE HARDWARE/SOFTWARE SOLUTION

Product Features

- Increased data rate of up to 350 Mbps (RAID) or 300 Mbps (JBOD) total throughput, allowing the server to support more users and play back more cameras simultaneously than previous DSSRV models
- 4TB storage drives provide 33% more storage over DSSRV 3TB models at no additional cost; systems previously utilizing two or more servers can now be built on a single server
- SSD system drive, with increased read-write speeds and no moving parts, increases overall system responsiveness and reliability
- Supports up to 128 IP Camera Streams; up to 64 Analog Cameras*
- Records H.264, MJPEG, and MPEG-4 IP Streams
- Supports Pelco and Third-Party IP Cameras and Network Encoders
- Compatible with DS ControlPoint for Simultaneous Monitoring of All DS Series and DX Series Products in a Single Client Interface
- Network Health and Event Monitoring Support Through SNMP and New Digital Sentry® System Information (DSSI) Utility

Optimized For Video Surveillance

The Digital Sentry® Network Video Recorder (DSSRV2 NVR) is optimized by Pelco to deliver the essential hardware support for the DS NVs video management software (VMS) without the extra cost or risk of integrating hardware and software.

Boosted by the 4th Generation Intel® Xeon™ processor and 8 GB of RAM, DSSRV2 NVR provides an optimal combination of processing power and reliability to meet the demands of HD video recording and playback operations. The system is powered to support up to 128 combined IP and analog video streams, with up to 64 analog cameras supported via the optional ENC5516 direct-attached encoder. Analog streams are also supported using Pelco and third-party encoders.

The DSSRV2 NVR boasts total throughput of up to 350 Mbps (300 Mbps for JBOD models) for recording analog and IP video streams as well as playback and export through the DS ControlPoint client. The increased data rate over original DSSRV models allows more users to play back video from the server simultaneously. When determining the maximum number of cameras and the desired frame rate to host on each system, the number of concurrent client connections, the number of streams played back per client, and the bandwidth required for client connections must be considered.

The DSSRV2 NVR functions as a stand-alone system or as part of a network of servers, monitored from the DS ControlPoint user interface. The system can be deployed solely as a network video recorder, as a digital video recorder (DVR), or as a hybrid NVR.



- Compatible with the DS Archive Utility
- Recording Rate Configurable per Individual Camera
- VideoXpert Ready. Migrate to VideoXpert, bringing your products forward into a next generation VMS

Two gigabit network ports provide for convenient network architecture planning by allowing one port to be dedicated to IP cameras, while the second network port is used for client connections. Two DisplayPorts ports provide a convenient connection for high resolution digital monitors for use with HD cameras.

DSSRV2 models are available with DIACAP/DIARMF-ready software, for use in secured environments implementing information assurance security standards.

Reliability

DSSRV2 models incorporate an SSD system drive. With increased read-write speeds and no moving parts, the SSD system drive increases the reliability, uptime, and responsiveness of the system. DSSRV2 systems now support 4TB drives, increasing capacity by 33% over original DSSRV models without increasing cost. With front-available storage drives for easy servicing and upgrades, the DSSRV2 NVR is available with up to 20 TB storage for models without the optional optical disk drive (ODD), or up to 16 TB for ODD models. The drives are hot-swappable when configured for internal RAID 5 storage.

External storage is supported through USB attached storage or by using the optional DSSRV-SCSI interface card to connect to external SCSI storage targets such as the DX8100HDDI, providing additional storage of up to 24 TB. The external storage can be configured for either JBOD storage or for software controlled RAID 5 storage.

*The DS NVs database is limited to 128 cameras. The actual number of cameras the server supports depends on camera settings, client activity, network bandwidth, and the available throughput of the DSSRV2.



by Schneider Electric



C4014 / REVISED 2-25-16

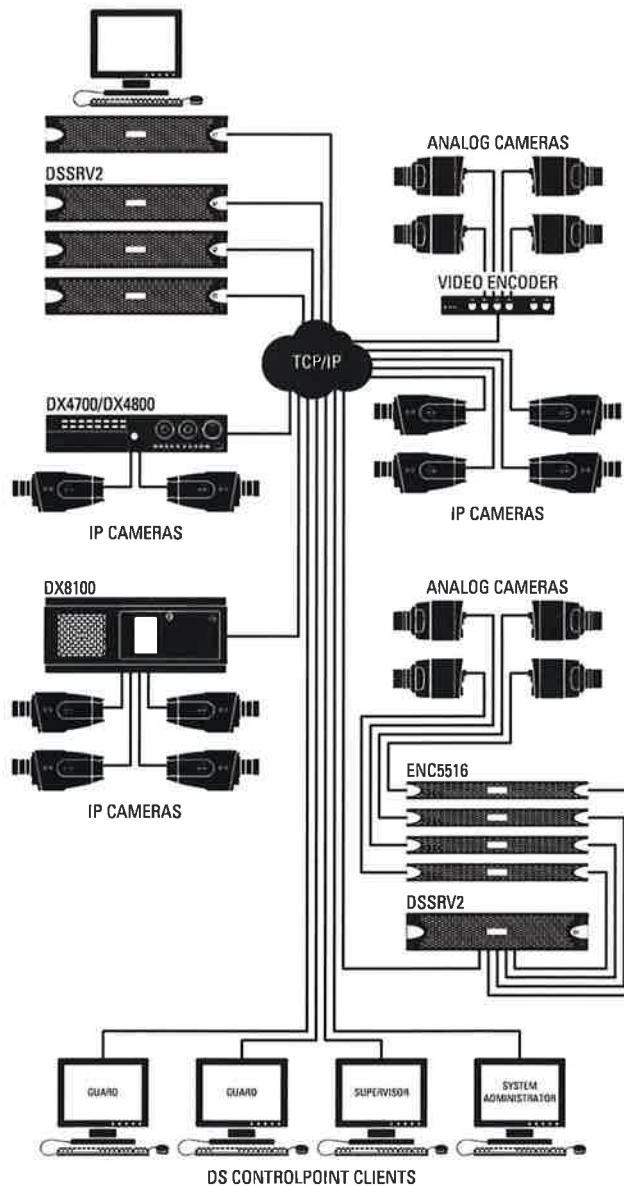
TECHNICAL SPECIFICATIONS

Open Architecture

The cornerstone of Digital Sentry design, a fully Open Architecture, is provided through ONVIF compliance and support for a large number of IP-specific drivers. Users can choose specific IP cameras or encoders to fit their application.

In addition, the Digital Sentry platform supports the Pelco API and a full suite of integration tools, allowing Digital Sentry to be integrated into access control or physical security information management (PSIM) systems.

Eliminate the risk of deferred support that comes with VMS software from one vendor and a general purpose hardware platform from another. Replace it with the assurance of an integrated platform built specifically for the rigors of IP video recording. Make the performance, reliability, and Open Architecture of DS NVs running on DSSRV2 NVR the core foundation of your video management solution.



IMPORTANT NOTE. PLEASE READ. The network implementation is shown as a general representation only and is not intended to show a detailed network topology. Your actual network will differ, requiring changes or perhaps additional network equipment to accommodate the system as illustrated. Please contact your local Pelco representative to discuss your specific requirements.

TECHNICAL SPECIFICATIONS

SYSTEM

Processor	Intel® Xeon E3-1275 v3
Operating System	Windows 7 Ultimate 64-bit
Internal Memory	8 GB DDR3 non-ECC RAM; 16 GB DDR ECC RAM for DSSRV2-RD models
User Interface	DS ControlPoint
Internal Storage (JBOD or RAID 5*)	
DSSRV2	500 GB, 4 TB, 8 TB, 12 TB, 16 TB, 20 TB
DSSRV2-DVD	500 GB, 4 TB, 8 TB, 12 TB, or 16 TB
DSSRV2-RD	12 TB, 16 TB, 20 TB, or 24 TB
RAID Level	Internal RAID 5 (requires DSSRV-RAID controller card for hot-swappable drives)
External Storage	Pelco's DX8100HDDI or third-party SCSI targets (requires optional DSSRV-SCSI)
System Drive	SSD
Storage Drives	
DSSRV2	6, 3.5-inch hard drive bays
DSSRV2-DVD	4, 3.5-inch hard drive bays
Optical Drive	DVD±RW with DSSRV2-DVD
USB Ports	3 USB 2.0 ports (1 front, 2 rear) 2 USB 3.0 ports (rear)

*The minimum configuration for an internal RAID 5 is three hard disk drives. One hard disk drive of the RAID 5 configuration is used for parity, reducing net storage capacity by the storage capacity of one hard disk drive. For example, an 18 TB RAID system provides net storage of 15 TB.

VIDEO

Video System	Intel HD Graphics P4700 (shared memory)
Maximum Resolution	3840 x 2160 per DisplayPort output (2x) 1920 x 1200 @ 60 Hz on DVI-D output 1920 x 1200 @ 60 Hz on VGA output
Video Outputs	Supports up to 3 simultaneous displays using any combination of the four outputs†
Video Standards	60 Hz capable for NTSC 75 Hz capable for PAL
Video Decoding Supported	MPEG-4 ASP, H.264 Baseline, Main, and High profiles
Panoramic Motion Recording	Supports up to 8 Oncam EVO-05, or EVO-12 cameras
Panoramic Continuous Recording	Supports up to 8 Oncam EVO-05, or EVO-12 cameras Supports up to 6 Optera IMM Series cameras

†Running client software on the server limits the server's performance. It is recommended that you run DS ControlPoint on a separate client to ensure optimal server and recording performance.

AUDIO

Audio Decoding	G.711 speech codec
Audio Bit-rate	64 kbps
Audio Levels	
Input	Electret microphone
Output	Up to 3 Vp-p, adjustable, minimum load of 8 ohms
Audio Connectors	2, 3.5 mm stereo jacks
Connector Tip	Signal left (input and output)
Connector Ring	Signal right (input and output)
Connector Sleeve	Common
Audio Inputs	Microphone
Audio Outputs	Speaker or line out

NETWORK

Interface	Gigabit Ethernet (1000Base-T) ports (2x)
-----------	--

POWER

Power Input	100 to 240 VAC, 50/60 Hz, autoranging
Power Supply	Internal
Power Consumption	Operating Maximum
	Watts Amperes BTU/H
100 VAC / 50 Hz	222.0 2.22 758.0
110 VAC / 50 Hz	224.0 2.02 759.4
110 VAC / 60 Hz	223.0 2.03 761.4
115 VAC / 50 Hz	217.0 1.89 740.8
115 VAC / 60 Hz	215.5 1.87 735.7
220 VAC / 50 Hz	213.0 0.97 727.2
220 VAC / 60 Hz	204.1 0.93 696.8
240 VAC / 50 Hz	211.9 0.88 723.4
240 VAC / 60 Hz	207.6 0.86 708.8

FRONT PANEL INDICATORS/FUNCTIONS

Buttons	Power
Indicators	
Unit Status	Green, amber, red
Primary Network	Green, amber, red
Secondary Network	Green, amber, red
Software Status	Green, amber, red (based on diagnostics)
Hard Disk Status	Green, red, off (behind bezel)

ENVIRONMENTAL

Operating Temperature	10° to 35°C (50° to 95°F)
Storage Temperature	–40° to 65°C (–40° to 149°F)
Operating Humidity	20% to 80%, noncondensing
Maximum Humidity Gradient	10% per hour
Operating Altitude	–15 to 3,048 m (–50 to 10,000 ft)
Operating Vibration	0.25 G at 3 Hz to 200 Hz at a rate of 0.5 octave/minute

Note: The temperature at the unit air intake can be significantly higher than room temperature. Temperature is affected by rack configuration, floor layout, air conditioning strategy, and other issues. To prevent performance failure and unit damage, make sure the temperature at the unit is continuously within the operating temperature range.

PHYSICAL

Dimensions	50.8 x 43.4 x 8.9 cm (20" D x 17.1" W x 3.5" H)
Weight	Unit Shipping
DSSRV2-005	11.8 kg (26 lb) 20.9 kg (46 lb)
DSSRV2-040	11.8 kg (26 lb) 20.9 kg (46 lb)
DSSRV2-080	12.7 kg (28 lb) 21.8 kg (48 lb)
DSSRV2-120	14.5 kg (32 lb) 23.6 kg (52 lb)
DSSRV2-160	15.4 kg (34 lb) 24.5 kg (54 lb)
DSSRV2-200	16.3 kg (36 lb) 25.4 kg (56 lb)
DSSRV2-005DVD	12.7 kg (28 lb) 21.8 kg (48 lb)
DSSRV2-040DVD	13.6 kg (30 lb) 22.7 kg (50 lb)
DSSRV2-080DVD	14.5 kg (32 lb) 23.6 kg (52 lb)
DSSRV2-120DVD	15.4 kg (34 lb) 24.5 kg (54 lb)
DSSRV2-160DVD	16.3 kg (36 lb) 25.4 kg (56 lb)
DSSRV2-120RD	13.6 kg (30 lb) 23.6 kg (52 lb)
DSSRV2-160RD	14.5 kg (32 lb) 24.3 kg (54 lb)
DSSRV2-200RD	15.4 kg (34 lb) 25.2 kg (56 lb)
DSSRV2-240RD	16.3 kg (36 lb) 26.1 kg (58 lb)

TECHNICAL SPECIFICATIONS

MODELS

The following table describes model numbers for DSSRV2 products. For example, the model number for a 12 TB, DSSRV2 device with a United Kingdom power cord is DSSRV2-120-EUK. The model number for a 8 TB, DSSRV2-DVD device with an North American power cord is DSSRV2-080DV-US. Models ending in D are for use in DIACAP/DIARMF security-enabled environments.

Model	Storage	Country Code (optional)
NVR Without Optical Disk Drive		US = North America EUK = Europe/United Kingdom D = DIACAP/DIARMF
DSSRV2-005	500 GB	
DSSRV2-040	4 TB	
DSSRV2-080	8 TB	
DSSRV2-120	12 TB	
DSSRV2-160	16 TB	
DSSRV2-200	20 TB	
NVR With RAID Configuration		
DSSRV2-120RD	12 TB	
DSSRV2-160RD	16 TB	
DSSRV2-200RD	20 TB	
DSSRV2-240RD	24 TB	
NVR With Optical Disk Drive		
DSSRV2-005DV	500 GB	
DSSRV2-040DV	4 TB	
DSSRV2-080DV	8 TB	
DSSRV2-120DV	12 TB	
DSSRV2-160DV	16 TB	

SUPPLIED ACCESSORIES

Power cord (for applicable models)

USB Keyboard and Mouse	1
Bezel Key	2
Rack Mount Kit	Brackets, rails, and hardware for mounting in a 2 RU rack
DSSRV-LIT	Documentation
USB-DS	Imaged with DS NVs and includes resource documentation

OPTIONAL ACCESSORIES

DS-SW-CAM

ENC5516
ENC5400-4PORT

DSSRV2-RAID

DSSRV2-SCSI
DSHDD-005
DS-EN-HDD-4TB
PWRCRD-S-AR
PWRCRD-S-AU
PWRCRD-S-EU
PWRCRD-S-UK
PWRCRD-S-US

DSSRV2 models include eight licenses for Pelco and third-party IP cameras; additional DS-SW-CAM licenses can be purchased separately.

Direct-attached analog encoder
4-port host card; connects 4 ENC5416 or ENC5516 encoders

LSI 3Ware 9750-8i RAID controller card

Adaptec® SCSI Card 29320LPE
500 GB upgrade/replacement drive
4 TB upgrade/replacement drive
Standard power cord, Argentina
Standard power cord, Australia
Standard power cord, Europe
Standard power cord, United Kingdom
Standard power cord, United States

Note: Only joystick control is supported. Mouse operation is required to move between tear-off tabs in DS ControlPoint. Endura color-coded keys are not supported.

CERTIFICATIONS/RATINGS

- CE, Class A; meets EN50130-4 standard requirements
- FCC, Class A
- UL/cUL Listed
- C-Tick
- CCC
- KCC

STANDARDS/ORGANIZATIONS

- Pelco is a member of the MPEG-4 Industry Forum
- Pelco is a member of the Universal Plug and Play (UPnP) Forum, Steering Committee
- Pelco is a member of the Universal Serial Bus (USB) Implementers Forum
- Pelco is a contributor to the Internal Standards for Organization/ Electrotechnical Commission (ISO/IEC) Joint Technical Committee 1 (JTC1), "Information Technology," Subcommittee 29, Working Group 11
- Compliance, ISO/IEC 14496 standard (also known as MPEG-4)
- Compliance, International Telecommunication Union (ITU) Recommendation G.711, "Pulse Code Modulation (PCM) of Voice Frequencies"
- Pelco is a member of the ONVIF Open Industry Forum

Note: Judgment as to the suitability of the products for users' purposes is solely the users' responsibility. Users should refer to the Operation manuals for cautionary statements regarding user selected options and how they might affect video quality. Users shall determine the suitability of the products for their own intended application, picture rate and picture quality. In the event users intend to use the video for evidentiary purposes in a judicial proceeding or otherwise, users should consult with their attorney regarding any particular requirements for such use.

Pelco by Schneider Electric
3500 Pelco Way, Clovis, California 93612-5699 United States
USA & Canada Tel (800) 289-9100 Fax (800) 289-9150
International Tel +1 (559) 292-1981 Fax +1 (559) 348-1120
www.pelco.com www.pelco.com/community

Pelco, the Pelco logo, and other trademarks associated with Pelco products referred to in this publication are trademarks of Pelco, Inc. or its affiliates. ONVIF and the ONVIF logo are trademarks of ONVIF Inc. All other product names and services are the property of their respective companies. Product specifications and availability are subject to change without notice. ©Copyright 2015, Pelco, Inc. All rights reserved.

DS ControlPoint Client User Interface

FUTURE-PROOF CLIENT MONITORING APPLICATION

Product Features

- Supports All Digital Sentry® Digital Video Management Systems (DVMS), and MasterControl/DVX
- Supports Pelco's DX4100, DX4500, DX4600, DX4700, DX4800, DX8000, and DX8100 Series DVRs
- Supports Pelco NET5300T Series and NET5400T Series Video Servers (Encoders)
- Supports Pelco IP Cameras with Sarix® HD Technology
- Supports the Display of iVEX, MJPEG, MPEG-4, and H.264 Baseline, Main, and High Profiles Encoded Streams from IP Cameras
- Compatible with Workstations Running Microsoft® Windows® Server® 2003, Windows Server 2008, Windows XP, Windows Vista®, Windows 7, or Windows 8
- Unified Interface that Seamlessly Supports Analog and IP Video Inputs
- Organizes Cameras into Logical Groups and System Groups
- Quick Sort by Device Name, IP Address, or Custom Definition
- Tear Offs Allow for Extended Camera Viewing Across Multiple Monitors*
- Instant Recording and Quick Review of Recorded Video
- Multicamera Sequential Tours
- Pan/Tilt/Zoom (PTZ) Camera Control
- Digital Zoom

DS ControlPoint is an intuitive, graphical user interface used to monitor and operate a combination of analog and IP video capture devices across an IP network, and through a single client.

With support for Pelco, Integral, and Digital Sentry® recording devices and servers running DS NVs, **DS ControlPoint** provides a seamless and progressive migration from analog to IP environments. **DS ControlPoint** also provides investment protection for customers looking to benefit from today's HD and megapixel camera offerings.

DS ControlPoint is easy to use with a tabbed environment, which allows operators to quickly switch between several work spaces. Selecting live or recorded data from one or more locations is as simple as a single click.

DS ControlPoint displays exceptional high-quality images captured by any one of Pelco's robust line of standard resolution and megapixel IP cameras, along with hundreds of IP video capture devices from major industry providers. By using **DS ControlPoint** and DS NVs video management system (VMS), you can extend your plug and play capabilities with support for ONVIF version 1.02 specifications. This flexibility allows you to choose components that best satisfy your installation requirements.



- Audio Monitoring and Playback from Analog and IP Sources
- Video Export Wizard
- Video Authentication
- Video Analytics Support (Through Optional Active Alert)
- Tabbed Work Area with Context-Sensitive Icons
- Right-Click Functionality from Secondary Navigation or Tabbed Work Area
- Data from Third-Party Devices, Alarms, Events, and Audio Displayed in Any Window Pane
- Alarm Pop-Ups Automatically Alert Operators to Associated Cameras

DS ControlPoint includes a video scrub bar to make finding the right segment of video efficient and effortless. Built-in bandwidth throttling, along with override capabilities on a client-by-client basis, makes deploying IP video security nonintrusive over an existing network topology. Operator alerting functions, such as video pop-up on alarm, allow for effective monitoring of hundreds of cameras.

DS ControlPoint ships with all Digital Sentry systems. The software can be downloaded at no cost separately or with DS NVs from www.pelco.com. DS NVs includes four free licenses for Pelco IP video capture devices.

*The number of monitors that can be supported is limited by the hardware configuration and is not a software limitation.

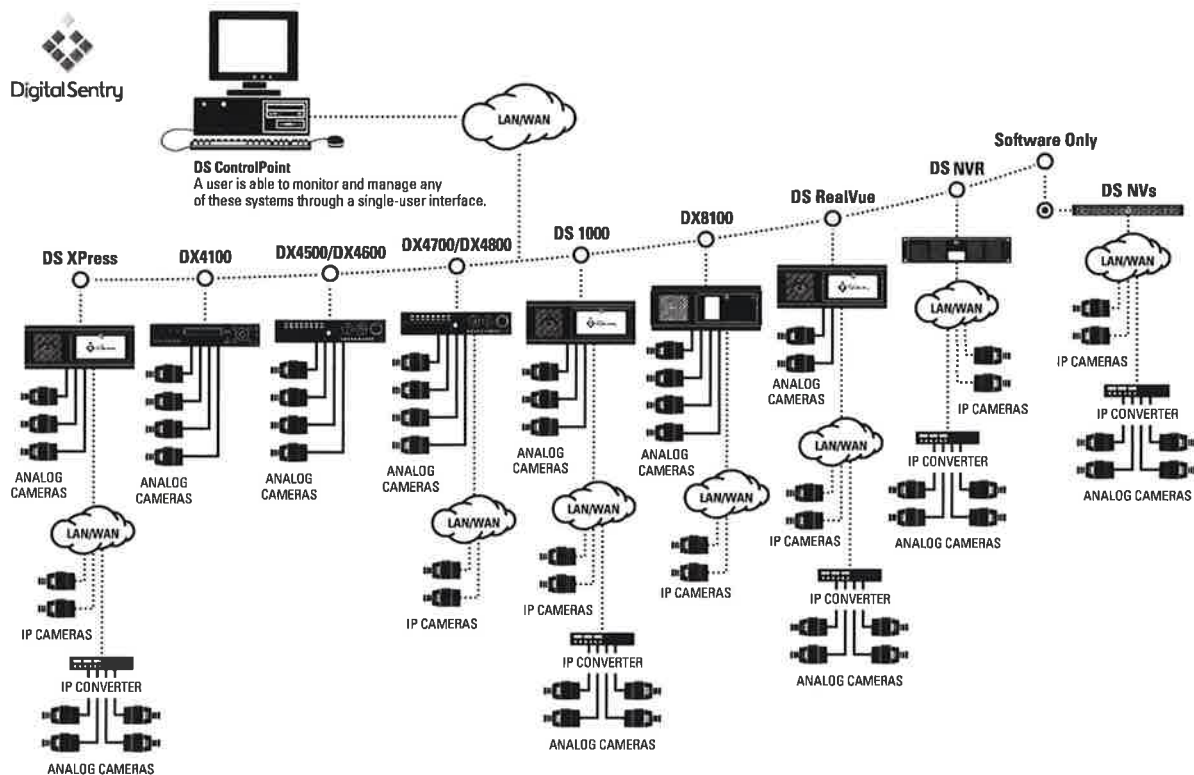


by Schneider Electric



C3669 / REVISED 4-22-14

TECHNICAL SPECIFICATIONS



IMPORTANT NOTE. PLEASE READ. The network implementation is shown as a general representation only and is not intended to show a detailed network topology. Your actual network will differ, requiring changes or perhaps additional network equipment to accommodate the system as illustrated. Please contact your local Pelco representative to discuss your specific requirements.

PELCO DVR/HVR PRODUCT FEATURES

DS XPress

- iVEX Compression
- 4, 9, 16, 32, 64, 128 Channels
- Analog Cameras
- IP Cameras/Encoders
- Video Analytics (Through Optional Active Alert)
- SNMP
- Network Health Monitoring
- Off Line Storage Archiving (Through Optional Archive Utility)

DX4100

- H.264 Compression
- 4 Channels
- Analog Cameras

DX4500/DX4600

- MPEG-4 Compression
- 8, 16 Channels
- Analog Cameras

DX4700/DX4800

- H.264 Compression
- 8 or 16 Analog Channels
- Plus 2 Megapixel IP Channels

DS 1000

- MPEG-4 Compression
- 16, 32 Channels
- Analog Cameras
- IP Cameras/Encoders
- SNMP
- Network Health Monitoring
- Off Line Storage Archiving (Through Optional Archive Utility)

DX8100

- MPEG-4 Compression
- 8, 16, 24, 32 Channels
- Analog Cameras
- IP Cameras

DS RealVue

- MPEG-4 Compression
- 4, 8, 16, 32 Channels
- 30 fps at D1 Resolution 720 x 480 per Camera
- Analog Cameras
- IP Cameras/Encoders
- Video Analytics (Through Optional Active Alert)
- SNMP
- Network Health Monitoring
- Off Line Storage Archiving (Through Optional Archive Utility)

DS NVR

- Server Bundled with DS NVs and Pre-Activated IP Camera Licenses
- 4, 16, 32 Channels
- IP Cameras/Encoders
- Video Analytics (Through Optional Active Alert)
- Storage Expansion Through SCSI Interface
- SNMP
- Network Health Monitoring
- Off Line Storage Archiving (Through Optional Archive Utility)

DS NVs

- Software-Only Network Video Solution on the Server of Your Choice
- 4, 16, 32, 64 Channels Per Server
- IP Cameras/Encoders
- Video Analytics (Through Optional Active Alert)
- Storage Expansion Through SCSI Interface

TECHNICAL SPECIFICATIONS

CONTROLPOINT FEATURE SET FOR DS/DX SERIES PRODUCTS

SUPPORTED FEATURE SET	DS	DX8000/DX8100	DX4700/DX4800	DX4500/DX4600	DX4100
Connections					
Log on to single system	•	•	•	•	•
Log on to multiple systems	•	•	•	•	•
Get camera names	•	•	•	•	•
Same-user login from multiple clients	•	—	—	—	—
Live					
Single and multiple cameras	•	•	•	•	•
View OSD items (camera name, time, and so forth)	•	•	•	•	•
PTZ	•	•	(Speed setting does not apply)	(Speed setting does not apply)	(Speed setting does not apply)
Digital zoom	•	•	•	•	•
Motion borders	•	•	•	•	•
Alarm borders	•	•	•	•	•
Manual record borders	•	•	•	•	•
Continuous record borders	•	•	•	•	•
Audio playback	•	—	—	—	—
Support server local time	•	•	•	•	•
Support GMT time	•	•	•	•	•
Support client time	•	•	•	•	•
Groups					
Local groups	•	•	•	•	•
System groups	•	—	—	—	—
Tours					
Tours	•	•	•	•	•
Search					
Audio playback	•	—	—	—	—
Multiple search tabs	•	—	—	—	—
Motion borders	•	—	—	—	—
Alarm borders	•	—	—	—	—
Manual record borders	•	—	—	—	—
Continuous record borders	•	—	—	—	—
Authentication	•	—	—	—	—
Included samples filter	•	—	—	—	—
Smart search	•	—	—	—	—
View OSD items (camera name, time, and so forth)	•	•	•	•	•
Quick review	•	•	•	•	•
Digital zoom	•	•	•	•	•
Play every frame	•	—	—	—	—
Multispeed playback	•	8X maximum	6X maximum	6X maximum	6X maximum
Support server local time	•	•	•	•	•
Support GMT time	•	•	•	•	•
Support client time	•	•	•	•	•
Presearch grid	•	—	—	—	—

TECHNICAL SPECIFICATIONS

SUPPORTED FEATURE SET	DS	DX8000/DX8100	DX4700/DX4800	DX4500/DX4600	DX4100
Export					
Native compression support	•	•	•	•	•
Audio playback	•	—	—	—	—
Standalone I/Media playback	•	•	•	•	•
AVI EXE XPA	•	•	•	•	•
Miscellaneous					
Simultaneous live and search tabs	•	•	•	•	•
KBD300A	•	•	•	•	•
KBD5000	•	—	—	—	•
Pop-up on alarm	•	DX8100 Only	—	—	—
DSConneX					
Manual recording	•	•	—	—	—
Recorder events	•	—	—	—	—

REMOTE CLIENT PC REQUIREMENTS (UTILIZING 1 OR 2 MONITORS)

Processor	
Minimum	Intel® Pentium® 2.4 GHz with Hyper-Threading Technology
Optimum	Intel Core™2 Quad CPU, Q9400 at 2.66 GHz (4 CPUs)
Internal Memory	
Minimum	2 GB
Optimum	≥4 GB
Operating System	
Minimum	Windows XP Professional SP3
Optimum	Windows Vista (32 or 64 bit), Windows 7 (32 or 64 bit), Windows 8 (32 or 64 bit), Windows Server 2003, or Windows Server 2008
Video System	
Minimum	128 MB RAM with DirectX® 9.0
Optimum	Dual-head, 256 MB RAM with DirectX 9.0c

REMOTE CLIENT PC REQUIREMENTS (UTILIZING 3 OR 4 MONITORS)

Processor	
Minimum	Intel Core i7-3930K CPU, at 3.20 GHz (6 CPUs) with Hyper-Threading
Internal Memory	
Minimum	16 GB
Optimum	>16 GB
Operating System	
Minimum	Windows XP Professional SP3
Optimum	Windows Vista (64 bit), Windows 7 (64 bit), Windows 8 (64 bit), Windows Server 2003, or Windows Server 2008
Video System	
Minimum	Graphics Card, NVIDIA™ GTX TITAN 6 GB RAM

IMPORTANT NOTE. When DS ControlPoint is used with four monitors, there are operational limitations that are dependent on the following attributes:

- Model of camera utilized
- Resolution and frame rate
- Number of camera layouts per monitor

Four Monitor Example

Cameras: IXE10LW 1280 x 720, 30 fps, quality 49, in camera motion
 Monitor Configuration: Four PMCL532F monitors with resolution 1920 x 1080
 Monitor 1: 5 x 5 camera layout
 Monitor 2: 5 x 5 camera layout
 Monitor 3: 4 x 4 camera layout
Monitor 4: 2 x 2 camera layout
 Total: 70 cameras

OPTIONAL ACCESSORIES

KBD300A	Desktop keyboard with full switching and programming capabilities and joystick control of PTZ functions; requires a KBD300USBKIT or a KBD300USBKIT-X
KBD300USBKIT	Remote keyboard wiring kit (120 VAC) for KBD300A
KBD300USBKIT-X	Remote keyboard wiring kit (230 VAC) for KBD300A
KBD5000	Desktop keyboard configured with three control modules (variable speed joystick, jog dial and shuttle ring for playback and menu navigation, and a keypad for camera and monitor control)

Sarix® IMP Indoor and Environmental Mini Domes

UP TO 5 MEGAPIXEL, H.264, IR, DAY/NIGHT IP DOMES

Product Features

- Up to 5 megapixel (MPx) resolution
- Up to 30 images per second (ips) at 3 MPx
- Autofocus motorized remote zoom lens
- Integrated adaptive IR illumination (environmental IR models)
- Operating temperature up to 55°C (131°F)
- Up to 64 GB edge storage with Micro SD card
- Motion detection and camera sabotage detection
- Power over Ethernet (PoE+) Class 4, 24 VAC (environmental models), PoE, Class 3, 24 VAC, 12 VDC (indoor models)
- Pelco Smart Compression Technology
- All models vandal resistant to IK10
- Compatible with Pelco and third-party video systems
- ONVIF Profile S, Profile G, and Profile Q conformant
- Full 3-year warranty and support

Sarix Professional Range

Powerful, versatile, and affordable, the **Sarix® Professional (P)** range cameras pack the most popular features and functionality of Sarix technology into a wide range of indoor and outdoor options, including bullet cameras and mini domes. There are also indoor-only options such as a vandal resistant wedge and micro dome. Mix and match the performance options and form factor you need for almost any lighting condition, environment, and application.

Camera

Within the **Sarix Professional** range, the **Sarix IMP Series** mini dome cameras feature a remote zoom lens for wide angle or long range surveillance needs. Autofocus capability ensures the camera can be automatically refocused when needed. Additionally, the **Sarix IMP Series** features advanced color science and a mechanical IR cut filter for increased sensitivity in low-light installations.

Video

Sarix Professional range cameras support up to two simultaneous video streams and a third service stream. The two streams can be compressed with efficient H.264 High or Main profiles or MJPEG formats. The streams can be configured to a variety of frame rates and variable bit rates to optimize image quality with bandwidth and storage efficiency.



Edge Storage

Sarix Professional range cameras feature onboard edge storage with a micro SD card. Video clips of varying lengths can be stored to the card upon alarm, or video can be written continuously to the SD card in the case of network outage. Video can be retrieved from the card through the FTP protocol or by using an ONVIF Profile G enabled client.

Sarix Professional range cameras feature a simple motion detection algorithm that allows the camera to record or send an alarm when there is motion detected in a selected zone or within the entire scene. A camera sabotage alarm is triggered if the lens is obstructed or when the camera is repositioned.

Open and Integrated

Sarix Professional range cameras seamlessly connect to Pelco video management systems such as VideoXpert™, Endura® version 2.0 (or later), and Digital Sentry® version 7.3 (or later). **Sarix Professional** range cameras integrate with major third-party systems through the open Pelco API or the ONVIF Profile S, Profile G, and Profile Q standards.

Standard Web Interface

Pelco cameras use a standard Web browser interface for easy remote setup and administration. Controls are optimized for convenient one-step camera configuration for features including color, exposure, flicker control, and streaming.



by Schneider Electric



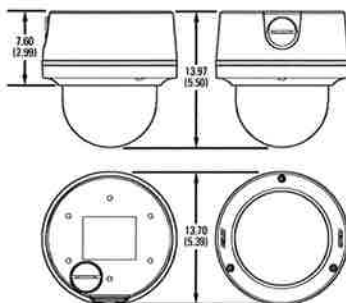
C4021 / REVISED 2-23-17

TECHNICAL SPECIFICATIONS

BACK BOX FEATURES

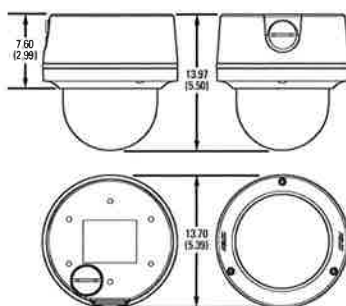


VALUES IN PARENTHESES ARE INCHES; ALL OTHERS ARE CENTIMETERS.



Indoor Surface Mount

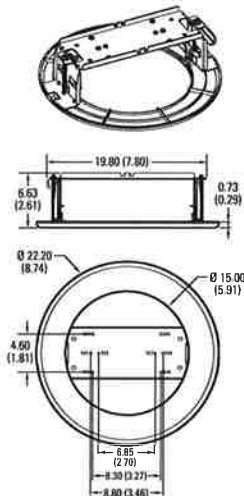
- Plastic body and trim ring; polycarbonate bubble
- White, RAL 9003
- **IK10 (20J) Impact Resistance**
- **PoE, Class 3, 24 VAC, 12 VDC**



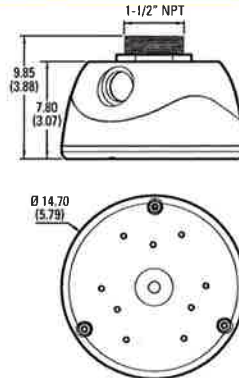
Environmental Surface Mount

- Aluminum body and trim ring; polycarbonate bubble
- RAL 7047
- **IP66 Ingress Protection**
- Type 4X
- **IK10 (20J) Impact Resistance**
- 24 VAC and **PoE+ Class 4 only**

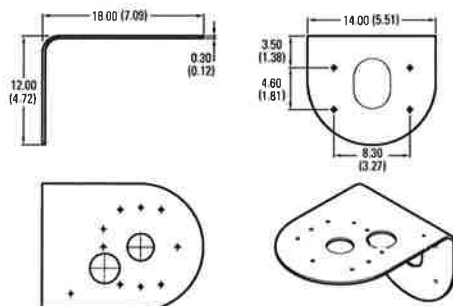
IMPICM-11 AND IMPICM-1ER IN-CEILING MOUNT



IMPPM-11 AND IMPPM-1ER PENDANT ADAPTER



IMPPMB-11 WALL MOUNT BRACKET



TECHNICAL SPECIFICATIONS

CAMERA

Imaging Device

MPx	Sensor	Maximum Resolution
5 MPx	1/1.8-inch	2592 x 1944 (5.0 MPx)
3 MPx	1/2.8-inch	2048 x 1536 (3.1 MPx)
2 MPx	1/2.8-inch	1920 x 1080 (2.1 MPx)
1 MPx	1/3-inch	1280 x 960 (1.3 MPx)

Imager Type

CMOS

Imager Readout

Progressive scan

Electronic Shutter Range

1/5 ~ 1/30,000 sec (1 and 5 MPx),
1/5 ~ 1/25,000 sec (2 MPx),
1/5 ~ 1/45,000 sec (3 MPx)

Wide Dynamic Range

75 dB, 90 dB (Backlight Compensation On)

White Balance Range

2,000° to 10,000°K

3D Noise Reduction

Yes (ON/OFF selectable)

Minimum Illumination

MPx	Sensitivity	Color		Mono		Mono (IR on)
		33 ms	200 ms	33 ms	200 ms	
5 MPx	f/1.2	0.30 lux	0.03 lux	0.01 lux	0.002 lux	0.00 lux
3 MPx	f/1.2	0.25 lux	0.03 lux	0.01 lux	0.002 lux	0.00 lux
2 MPx	f/1.2	0.25 lux	0.03 lux	0.01 lux	0.002 lux	0.00 lux
1 MPx	f/1.4	0.05 lux	0.03 lux	0.01 lux	0.002 lux	0.00 lux

Mechanical IR Cut Filter

Yes (AUTO/MANUAL selectable), with different set points on lux

IR Illumination

Adaptive IR up to 25 m; auto ON in night mode, or off

Signal to Noise Ratio

≥50 dB

LENS

Lens Type

Built-in; varifocal

Focal Length

f/1.4, 3 ~ 10.5 mm

Focus

Autofocus, motorized

Zoom

Remote

Auto Iris Type

DC drive lens

Field of View*

Lens	Angle of View	1 MPx	2 MPx	3 MPx	5 MPx
3 to 10.5 mm	Diagonal	110°~ 33°	116°~ 35°	115°~ 34°	110°~ 46°
	Horizontal	85°~ 27°	100°~ 31°	88°~ 30°	88°~ 37°
	Vertical	62°~ 19°	54°~ 17°	52°~ 16°	64°~ 27°

*Field of view may vary with changes in resolution settings.

TECHNICAL SPECIFICATIONS

VIDEO

Video Streams

Up to 2 simultaneous streams, plus service stream; the secondary stream is variable based on the setup of the primary stream

Video Overlay

Camera name, time, date, and customizable text with multiple supported languages

Available Resolutions

MPx	Width	Height	Aspect Ratio
5.0	2592	1944	4:3
3.1	2048	1536	4:3
2.1	1920	1080	16:9
1.2	1280	960	4:3
0.9	1280	720	16:9
0.5	800	600	4:3
0.3	640	480	4:3
0.1	320	240	4:3
0.1	320	180	16:9

Frame Rates

MPx	Images per Second (ips)
5 MPx	15, 12.5, 10, 7.5, 5, 3, 2, 1
3 MPx	30, 25, 20, 16.67, 15, 12.5, 10, 7.5, 5, 3, 2, 1
2 MPx	30, 25, 20, 16.67, 15, 12.5, 10, 7.5, 5, 3, 2, 1
1 MPx	30, 25, 20, 16.67, 15, 12.5, 10, 7.5, 5, 3, 2, 1

Note: Available frame rates are selectable for each independent stream depending on the coding, resolution, and stream configuration.

Video Encoding

H.264 High or Main profiles; and MJPEG

Bit Rate Control

Constant bit rate (CBR), constrained variable bit rate (CVBR) with configurable maximum value

Corridor Mode

Electronic image flip and mirror: 180°, 90° and 270° (H.264 only)

Service Stream

640 x 480 or 640 x 352; 2 ips, JPEG

Window Blanking

8 configurable windows

PELCO'S SMART COMPRESSION TECHNOLOGY

Pelco's Smart Compression Technology lowers bandwidth and storage requirements by up to 70%. Our technology allows the user to make intelligent decisions regarding storage savings and image quality.

Pelco's Smart Compression Technology dynamically analyzes motion occurring within live video in real-time, to intelligently compress the information you don't need, while retaining details with clear quality in the areas that are important in the scene. By enabling Dynamic GOP, an added feature of Smart Compression, the number of I-frames are automatically reduced in scenes with low motion. Based on the complexity of scenes and motion occurring, such as a store room that has limited entry and exit, up to 70% bandwidth savings can be achieved.

AUDIO

Streaming

Bi-directional

Input

Line in and out

Encoding

G.711 A-law/G.711 U-law

TECHNICAL SPECIFICATIONS

ELECTRICAL

Network Port	RJ-45 connector for 100Base-TX
Power Input	PoE+ Class 4 or 24 VAC (Environmental); PoE Class 3, 24 VAC nominal, 18 to 32 VAC range, 12 VDC (Indoor)
Power Consumption	
Indoor	<6 W
Outdoor	<16 W (with heater ring)
Local Storage	Up to 64 GB on Micro SDHC or SDXC card
Alarm	
Input	1
Output	1; PhotoMOS™ relay (30 V, 1 A)
Triggers	Unsupervised mode that detects switch closures (N.O. and N.C.)

ENVIRONMENTAL

Operating Temperature	
Outdoor	−40° to 55°C (−40° to 131°F)*
Indoor	−10° to 55°C (14° to 131°F)
Storage Temperature	−40° to 60°C (−40° to 140°F)
Operating Humidity	5% to 90%, RH noncondensing
*Thermostatically controlled heating provides ramped heating control between the initial heater on at 15° C (59°F) and full heating mode at −40°C (−40°F).	

GENERAL

Construction	Aluminum body and trim ring (environmental); plastic body and trim ring (indoor); polycarbonate bubble (indoor and environmental)
Finish	
Indoor	White, RAL 9003
Outdoor	RAL 7047
Pan/Tilt Adjustment	Manual
Pan	370°
Tilt	90°
Rotate	355°
Indoor/Outdoor	
Unit Weight	80 kg (1.76 lb) 1.40 kg (3.09 lb)
Shipping Weight	1.20 kg (2.66 lb) 1.80 kg (3.97 lb)

NETWORK

Supported Protocols	TCP/IP, UDP/IP (unicast, multicast IGMP), ICMP, IPv4, IPv6, SNMP v2c/v3, HTTP, HTTPS, SSL, SSH, SMTP, FTP, RTSP, UPnP, DNS, NTP, RTP, RTCP, LDAP (client), QoS, GB28181
Users	
Unicast	1 administrator, up to 4 viewers
Multicast	Unlimited users H.264
Security Access	Multiple user access levels with password protection

INTEGRATION

Video Management	VideoXpert; Endura 2.0 (or later); Digital Sentry 7.3 (or later); Third-party VMS through Pelco API, ONVIF Profile S, Profile G, and Profile Q
Mobile Application	Pelco Mobile
Analytics	Simple motion detection and camera sabotage detection
Local Storage	Capture 1-, 5- or 10-second video clips on camera sabotage, motion detection, or alarm input; record video continuously in the case of network outage with option to overwrite; access video through FTP protocol and ONVIF Profile G
Camera Discovery and Firmware	Discover cameras upgrade firmware upgrade using the Pelco Device Utility 2 version 2.2 or later; or Pelco Utilities
Web Browser Support	Microsoft® Internet Explorer® 9.0, Apple® Safari® 7.0.6, Mozilla® Firefox® 31.0, Google® Chrome™ 37.0.2062.124 m and later
Multilingual User Interface	English, French, German, Italian, Portuguese, Arabic, Russian, Spanish, Turkish, Korean, Simplified Chinese

TECHNICAL SPECIFICATIONS

SYSTEM MODEL NUMBERS*

Back Box	Resolution	Lens	Model Number	Description
Surface	1 MPx	3 to 10.5 mm	IMP121-1ES	Sarix Pro Environmental Dome
	1 MPx	3 to 10.5 mm	IMP121-1IS	Sarix Pro Indoor Dome
	1 MPx	3 to 10.5 mm	IMP121-1RS	Sarix Pro Environment IR Dome
	2 MPx	3 to 10.5 mm	IMP221-1ES	Sarix Pro Environmental Dome
	2 MPx	3 to 10.5 mm	IMP221-1IS	Sarix Pro Indoor Dome
	2 MPx	3 to 10.5mm	IMP221-1RS	Sarix Pro Environment IR Dome
	3 MPx	3 to 10.5 mm	IMP321-1ES	Sarix Pro Environmental Dome
	3 MPx	3 to 10.5 mm	IMP321-1IS	Sarix Pro Indoor Dome
	3 MPx	3 to 10.5 mm	IMP321-1RS	Sarix Pro Environment IR Dome
	5 MPx	3 to 10.5 mm	IMP521-1ES	Sarix Pro Environmental Dome
	5 MPx	3 to 10.5 mm	IMP521-1IS	Sarix Pro Indoor Dome
	5 MPx	3 to 10.5 mm	IMP521-1RS	Sarix Pro Environment IR Dome

*System options contain a back box/mount, camera, and clear dome.

CERTIFICATIONS*

- CE - EN 55022 (Class A), EN 50130-4, EN 60950-1
- FCC (Class A) - 47 CFR Part 15
- UL and cUL Listed - UL 60950-1, CAN/CSA-C22.2 No. 60950-1-07
- UL/IEC 60950-22
- ICES-003 (Class A)
- RCM
- KC
- ONVIF Profile S, Profile G, and Profile Q conformant

*At the time of this publication, certifications are pending. Consult the factory or www.pelco.com for the current status of certifications.

OPTIONAL ACCESSORIES

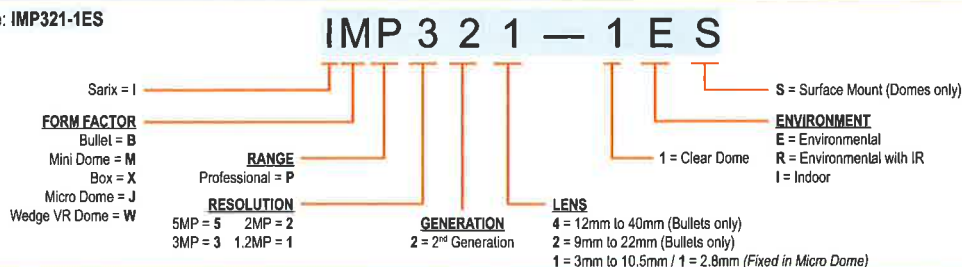
IMPEBAP	4S electrical box adapter
IMPLD2-0I	Smoked lower dome (indoor)
IMPLD2-0ER	Smoked lower dome (environmental)
IMPLD2-1I	Clear lower dome (indoor)
IMPLD2-1ER	Clear lower dome (environmental)

RECOMMENDED MOUNTS

IMPICM-1I	In-ceiling mount, for use with the indoor models
IMPICM-1ER	In-ceiling mount, for use with the environmental models
IMPPM-1I	Pendant adapter, for indoor models
IMPPM-1ER	Pendant adapter, for environmental models
IMPPMB-1I	Wall mount bracket for indoor models
WMVE-SR	Wall mount arm, 1.5 in. NPT, outdoor, RAL 7047
WMVE-SW	Wall mount arm, 1.5 in. NPT, indoor, RAL 9003

HOW TO ORDER

Example: IMP321-1ES



Pelco by Schneider Electric
 3500 Pelco Way, Clovis, California 93612-5699 United States
USA & Canada Tel (800) 289-9100 Fax (800) 289-9150
International Tel +1 (559) 292-1981 Fax +1 (559) 348-1120
www.pelco.com www.pelco.com/community

Pelco, the Pelco logo, and other trademarks associated with Pelco products referred to in this publication are trademarks of Pelco, Inc. or its affiliates. ONVIF and the ONVIF logo are trademarks of ONVIF Inc. All other product names and services are the property of their respective companies. Product specifications and availability are subject to change without notice. ©Copyright 2016, Pelco, Inc. All rights reserved.

WMVE Series Mounts

WALL MOUNTS, LIGHT DUTY

Product Features

- Indoor and Outdoor Installations Supported
- Durable Aluminum Mount Construction
- For Use with Next Generation Sarix® Enhanced, Sarix Enhanced, Sarix Professional, and Camclosure® 2 Series Pendant Mounts
- Converts to Pole Mount with a PA101 Pole Mount Adapter



The WMVE-SR and WMVE-SW wall mounts can be installed directly to a wall or any vertical surface. Power and video wiring can be easily routed through the back of each mount or through the conduit access located on the bottom of the mount arm. The WMVE-SR/WMVE-SW wall mounts can be adapted to pole mount applications using the PA101 pole mount adapter.



by Schneider Electric

International Standards
Organization Registered Firm:
ISO 9001 Quality System



C285 / REVISED 6-16-16

MODEL

WMVE-SR

Light gray wall mount specifically designed for use with Next Gen Sarix Enhanced (environmental models), IMEx19-1VP, IMEx19-1EP, IM-VPEM, **IMPBB-EP**, IE-P, and Camclosure 2 Series pendant mounts

WMVE-SW

White wall mount specifically designed for use with the Next Gen Sarix Enhanced (indoor models), IMEx19-1P and IMPBB-P indoor pendant mounts

MECHANICAL

Mounting Method

Secure with 1/4-in. fasteners of appropriate type (not supplied); up to 4 fasteners can be used

Cable Entry

Through the back of the mount and one 1.9 cm (3/4 in.) conduit access on the bottom of the mount

Pole Mount Method

Attach to PA101 pole mount adapter bolts

GENERAL

Construction

Aluminum Finish

Finish

WMVE-SR

Light gray polyester powder coat

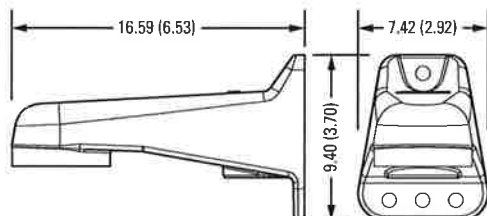
WMVE-SW

White polyester powder coat

Unit Weight

1.00 lb (0.45 kg)

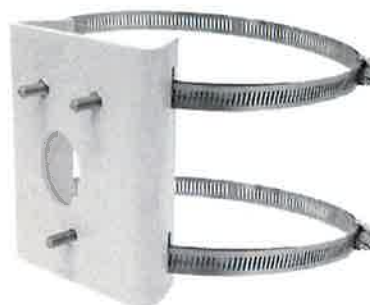
 VALUES IN PARENTHESES ARE INCHES; ALL OTHERS ARE CENTIMETERS. DRAWINGS AND DIMENSIONS NOT TO SCALE.



RELATED PRODUCT

PA101

Pole mount adapter for WMVE-SR/WMVE-SW mounts when used in pole mount applications. Stainless steel straps supplied. Straps fit 7.62 cm (3 in.) to 20.3 cm (8 in.) diameter pole.



Pelco by Schneider Electric

3500 Pelco Way, Clovis, California 93612-5699 United States

USA & Canada Tel (800) 289-9100 Fax (800) 289-9150

International Tel +1 (559) 292-1981 Fax +1 (559) 348-1120

www.pelco.com **www.pelco.com/community**

Pelco, the Pelco logo, and other trademarks associated with Pelco products referred to in this publication are trademarks of Pelco, Inc. or its affiliates. ONVIF and the ONVIF logo are trademarks of ONVIF Inc. All other product names and services are the property of their respective companies.

Product specifications and availability are subject to change without notice.

©Copyright 2016, Pelco, Inc. All rights reserved.



Warranty Information:

Pelco will warrant all replacement parts and repairs for 90 days from the date of Pelco shipment.

All goods requiring warranty repair shall be sent freight prepaid to a Pelco designated location. Repairs made necessary by reason of misuse, alteration, normal wear, or accident are not covered under this warranty.

Pelco assumes no risk and shall be subject to no liability for damages or loss resulting from the specific use or application made of the Products. Pelco's liability for any claim, whether based on breach of contract, negligence, infringement of any rights of any party or product liability, relating to the Products shall not exceed the price paid by the Dealer to Pelco for such Products.

In no event will Pelco be liable for any special, incidental, or consequential damages (including loss of use, loss of profit, and claims of third parties) however caused, whether by the negligence of Pelco or otherwise.

The above warranty provides the Dealer with specific legal rights. The Dealer may also have additional rights, which are subject to variation from state to state.

If a service is required, the Dealer must obtain a Return Merchandize number (RMA) by contacting Pelco at **(800) 289-9100** or **(559) 292-1981**.

The following information must be provided:

- Product model and serial number
- Date of shipment, P.O. number, sales order number, or Pelco invoice number
- Details of the defect or problem
- If there is a dispute regarding the warranty of a product that does not fall under the warranty conditions stated above, please include a written explanation with the product when returned.
- Goods returned for repair should be clearly identified with the assigned RMA number and freight should be prepaid. Method of return shipment shall be the same or equal to the method by which the item was received by Pelco.

Exceptions to this Warranty

Three years:

- Sarix Professional Range IP Cameras
- Digital Sentry® Series DS SRV hardware NVR and ENC5416 direct attached encoders and DS NVS software.



Returns and Claims:

In the case of logistic, technical, or commercial claims, please contact Pelco at (800) 289-9100 or (559) 292-1981. All claims must be accompanied by the RMA number which must be clearly displayed on the outside of the box. Non-compliance to this policy will result in shipment returned to sender.

In the event that you are not fully satisfied with a Pelco product within the first 90 days of invoice, Pelco will accept a return and will credit the purchase price paid for the product (freight charges and return freight not included). Product must be returned within 30 days of RMA issuance properly packaged, including all components and peripherals, and the goods must be free of obvious damage due to rough and/or improper handling. Failure to comply can result in product returned to sender at customer's expense or a restock fee may be applied. A credit will only be issued after the product is received and evaluated by Pelco.

Should a technical failure occur (Failed after Install or Dead on Arrival), Pelco will replace the product within 6 months of invoice at no charge, once Dead on Arrival or Failed After Install status is confirmed by a Pelco Authorized Service Center. The customer is responsible for inbound freight to Pelco in such instances. Pelco reserves the right to ship service/refurbished stock as replacements for defective material.

All merchandise returned outside of the 90-day 'No Questions Asked' and technical failure policy will be processed as a repair only. Goods returned for repair should be clearly identified with the assigned RMA number and freight should be prepaid. The repaired product will be sent back to the customer with freight paid by Pelco.

Goods produced under a Special Manufacturing Request (SMR), products deemed obsolete (OBS), and Special Orders are non-cancelable, non-returnable and are not eligible for our 90-days 'No Questions Asked' policy.



Simpson Security Systems, Inc.

July 24, 2017

Lacey Morel Bueche
Pointe Coupee Parish School Board
337 Napoleon Street
New Roads, LA 70760

RE: CCTV Systems RFP

We would like to thank you for the opportunity to provide a response for the above referenced RFP. Please be advised that Simpson Security has been performing work as such for school boards all over Louisiana and the Gulf Coast since 1991. You will find us very responsive and we provide a professional installation by licensed technicians. SSS, Inc. has been a Pelco Dealer for over 15 years.

You will find all information required in the packet in order with the exception of the below which we have referenced.

Section IV. Warranty and Claims Process

Pelco has the best warranty in CCTV and advance replacements. SSS, Inc. will provide and facilitate all warranties of any equipment that fails and will be replaced with a new product within 5 working days of the failure. The owner must notify SSS, Inc. of any failures and SSS will response to the site and facilitate the warranty. SSS, Inc. has included a (1) One Year warranty on workmanship and a (3) Three warranty on all equipment furnished by SSS, Inc.

Section V. Timeline of Deployment

SSS, Inc. will deploy all equipment and cable for the project within 24 days of NTP. During this time submittals will be completed and approved and SSS, Inc. can start the project within 24 days of award. SSS, Inc. can complete the project and all schools within 60 days after start date or a total project duration of 90 days.

Again, thank you for the opportunity and if you have any questions or need any additional information please do not hesitate to ask.

SIMPSON SECURITY SYSTEMS, INC.

Keith B. Simpson
President/CEO

(318) 443-3391 • (800) 256-0741 • Fax (318) 443-7360

5616 Johb Eskew Drive, Alexandria, LA 71303 • P.O. Box 12418, Alexandria, LA 71315



Simpson Security Systems, Inc.

July 24, 2017

Pointe Coupee Parish School Board
337 Napoleon Street
New Roads, La 70760

To: Lacey Morel Bueche

Re: CCTV

Per your request and after our recent visit to the site, the following is an estimate for a CCTV System. This CCTV system will be IP Cameras which will have a 5mp view. SSS will install 218 cameras around the sites. The schools include the following Livonia High School, Rosenwald Elementary, Rougon Elementary STEM Magnet Academy, Upper Pointe Coupee Elementary and Valverda Elementary. The NVR will have 24TB of storage to give you approximately 30 days of storage as requested. SSS will run all wire and install all cameras in the locations per the plans. The CCTV system will be put on the owner's network. All cameras will be powered by the owner's switches and all cameras will be sent to one location for recording. The NVRs will be located in the desired location you ask. Below is the list of equipment that will be installed.

Head End Equipment:

- (3) Pelco 24TB NVRs
- (187) IP License
- (3) 24 inch Monitor
- (3) Back Up UPS

Livonia High School

- (39) Pelco IP 5mp Cameras, Brackets and Housings

Rosenwald Elementary

- (30) Pelco IP 5mp Cameras, Brackets and Housings

Rougon Elementary

- (26) Pelco IP 5mp Cameras, Brackets and Housings

STEM Magnet Elementary

- (40) Pelco IP 5mp Cameras, Brackets and Housings

Upper Pointe Coupee Elementary

- (24) Pelco IP 5mp Cameras, Brackets and Housings

Valverda Elementary

- (28) Pelco IP 5mp Cameras, Brackets and Housings

Wiring, Misc supplies, Installation Labor, Customer Training

Total for above noted equipment and labor: \$248,640.21

(Two Hundred and Forty Eight Thousand Six Hundred and Forty dollars and Twenty One Cents)

(318) 443-3391 • (800) 256-0741 • Fax (318) 443-7360

5616 John Eskew Drive, Alexandria, LA 71303 • P.O. Box 12418, Alexandria, LA 71315



Simpson Security Systems, Inc.

SSS excludes all conduit or pipe that connects between the buildings and any networking that will be needed to connect the NVR for remote viewing.

The above noted equipment carries an industry standard 1yr warranty (excluding power surge / lightning damage). Feel free to call me with any questions at 318-443-3391 or E-mail me at SamCanoe@SimpsonSecurity.com or sign the bottom and fax back to 318-443-7360 to initiate the ordering and scheduling process.

SSS acknowledges Addendum #1. The estimate below is to remove all CCTV cameras and cabling per the addendum #1 that was sent on 6/27/17. SSS will remove all old cameras and return to the owner as well as all the old wiring.

Misc supplies, Labor,

Total for above noted labor: \$17,995

(Seventeen Thousand Nine Hundred and Ninety Five Dollars)

Sincerely,

Sam Canoe
Security System Supervisor