

DATE: 7/20/2015

INVITATION TO BID
THIS IS NOT AN ORDER

Page: 1

BID NO.: 50-00113945

JEFFERSON PARISH

PURCHASING DEPARTMENT
P.O. BOX 9
GRETN, LA. 70054-0009
504-364-2678

VENDOR: uniforms manufacturing, inc.

BUYER: DREAMEY

Bids will be received until 11:00 AM, 7/27/2015 via fax: 504-364-2693 or via online at www.jeffparish.net

All bids submitted are subject to these instructions and general conditions and any special conditions and specifications contained herein, all of which are made part of this bid proposal reference. By submitting a bid, vendor agrees to comply with all provisions of Louisiana Law, as well be in compliance with the Jefferson Parish Code of Ordinances, Louisiana Code of Ethics, applicable Jefferson Parish ethical standards and Jefferson Parish Resolution No. 113646 and/or Resolution No. 113647. A copy of these resolutions may be obtained from the Office of the Parish Clerk, Suite 6700, Jefferson Parish General Government Building, 200 Derbigny Street, Gretna, LA 70053. You may also obtain a copy by visiting the Purchasing Department webpage at www.purchasing.jeffparish.net and clicking on On-line forms.

All vendors submitting bids must register as a Jefferson Parish vendor if not already yet registered. Bidders may be required to furnish current W-9 Forms and respective Tax Identification Numbers within 10 days after bid opening if such information is not on file or not up to date. Registration forms may be downloaded from www.purchasing.jeffparish.net and clicking on Vendor Information.

As per LSA-RS 47:301 et seq., all governmental bodies are excluded from payment of sales taxes to any Louisiana taxing body. Quotations shall be based on F.O.B. Delivered, anywhere within the Parish as designated by the Purchasing Department. JEFFERSON PARISH WILL ACCEPT ONE BID ONLY FROM EACH VENDOR. Items bid must meet specifications. JEFFERSON PARISH will accept one price for each item unless otherwise indicated. Two or more prices for one item will result in bid rejection. Bidders are required to complete, sign and return the bid form and/or complete and return the associated line item pricing forms as indicated. The price quoted for work shall be stated in figures. In the event there is a difference in unit prices and totals, the unit prices shall prevail.

JEFFERSON PARISH reserves the right to award contracts or place orders on a lump sum or individual item basis, or such combination, as shall in its judgment be in the best interest of JEFFERSON PARISH. Every contract or order shall be awarded to the LOWEST RESPONSIVE and RESPONSIBLE BIDDER, taking into consideration the CONFORMITY WITH THE SPECIFICATIONS and the DELIVERY AND/OR COMPLETION DATE

JEFFERSON PARISH reserves the right to cancel all or any part of an order if not shipped promptly. No charges will be allowed for parking or cartage unless specified in the quotation. The order must not be filled at a higher price than quoted. JEFFERSON PARISH reserves the right to cancel at any time and for any reason by issuing a THIRTY (30) day written notice to the contractor.

JEFFERSON PARISH requires all products to be new (current) and all work must be performed according to standard practices for the project. Unless otherwise specified, no aftermarket parts will be accepted. Unless otherwise specified, all workmanship and materials must have at least one (1) year guaranty, in writing, from the date of delivery and/or acceptance of the project. Any deviations or alterations from the specifications must be indicated and/or supporting documentation supplied with bid submission.

If this bid requires a pre-bid conference (see Additional Requirements section), bidders are advised that such conference will be held to allow bidders the opportunity to identify any discrepancies in the bid specifications and seek further clarification regarding instructions. The Purchasing Department will issue a written response to bidders' questions in the form of an Addendum.

All formal Addenda require written acknowledgment on the bid form by the bidder. Failure to acknowledge an Addendum on the bid form shall cause the bid to be rejected; JEFFERSON PARISH reserves the right to award bid to next lowest responsive and responsible bidder in this event.

USE OF BRAND NAMES AND STOCK NUMBERS: Where brand names and stock numbers are specified, it is for the purpose of establishing certain minimum standards of quality. Bids may be submitted for products of equal quality, provided brand names and stock numbers are specified. Complete product data may be required prior to award.

Quantities listed are for bidding purposes only. Actual requirements may be more or less than quantities listed.

Bidders are not to exclude from participation in, deny the benefits of, or subject to discrimination under any program or activity, any person in the United States on the grounds of race, color, national origin, or sex; nor discriminate on the basis of age under the Age Discrimination Act of 1975, or with respect to an otherwise qualified handicapped individual as provided in Section 504 of the Rehabilitation Act of 1973, or on the basis of religion, except that any exemption from such prohibition against discrimination on the basis of religion as provided in the Civil Rights Act of 1964, or Title VI and VII of the Act of April 11, 1968, shall also apply. This assurance includes compliance with the administrative requirements of the Revenue Sharing final handicapped discrimination provisions contained in Section 51.55 (c), (d), (e), and (k)(5) of the Regulations. New construction or renovation projects must comply with Section 504 of the 1973 Rehabilitation Act, as amended, in accordance with the American National Standard Institute's specifications (ANSI A117.1-1961).

INSTRUCTIONS FOR BIDDERS AND GENERAL CONDITIONS

IN ACCORDANCE WITH STATE REGULATIONS JEFFERSON PARISH OFFERS ELECTRONIC PROCUREMENT TO ALL VENDORS

This Electronic Procurement System allows vendors the convenience of reviewing and submitting bids online. This is a secure site and authorized personnel have limited read access only.

Please visit the Purchasing Department webpage at <http://purchasing.jeffparish.net> to register and review Jefferson Parish solicitations.

ADDITIONAL REQUIREMENTS FOR THIS BID

PLEASE MATCH THE NUMBERS PRINTED IN THIS BOX WITH THE CORRESPONDING INSTRUCTIONS BELOW.

12,13

1. All bidders must attend the pre-bid conference in relation to this bid; attendance is mandatory. Failure to attend will prohibit a company from submitting a bid. Vendors are hereby noticed that any vendor arriving after the mandatory pre-bid conference begins will not be allowed to sign in as evidence of attendance.
2. Attendance to this pre-bid conference is optional. However, failure to attend the pre-bid conference shall not relieve the bidder of responsibility for information discussed at the conference. Furthermore, failure to attend the pre-bid conference and inspection does not relieve the successful bidder from the necessity of furnishing materials or performing any work that may be required to complete the work in accordance with the specification with no additional cost to the owner.
3. Contractor must hold current applicable JEFFERSON PARISH licenses with the Department of Inspection and Code Enforcement. Contractor shall obtain any and all permits required by the JEFFERSON PARISH Department of Inspection and Code Enforcement. The contractor shall be responsible for the payment of these permits. All permits must be obtained prior to the start of the project. Contractor must also hold any and all applicable Federal and State licenses. Contractor shall be responsible for the payment of these permits and shall obtain them prior to the start of the project.
4. A LA State Contractor's License will be required in accordance with LSA R.S. 37-2150 et. seq. and such license number will be shown on the outside of the bid envelope. Failure to comply will cause the bid to be rejected. Additionally if submitting the bid electronically, then the license number must be entered in the appropriate field in the Electronic Procurement system. Failure to comply will cause the bid to be rejected.
5. It is the bidder's responsibility to visit the job site and evaluate the job before submitting a bid.
6. Job site must be clean and free of all litter and debris daily and upon completion of the contract. Passageways must be kept clean and free of material, equipment, and debris at all times. Flammable material must be removed from the job site daily because storage will not be permitted on the premises. Precautions must be exercised at all times to safeguard the welfare of JEFFERSON PARISH and the general public.

INSTRUCTIONS FOR BIDDERS AND GENERAL CONDITIONS

7. **PUBLIC WORKS BIDS:** All awards for public works in excess of \$5,000.00 will be reduced to a formal contract which shall be recorded at the contractor's expense with the Clerk of Court and Ex-Officio Recorder of Mortgages for the Parish of Jefferson. A price list of recordation costs may be obtained from the Clerk of Court and Ex-Officio Recorder of Mortgages for the Parish of Jefferson. All awards in excess of \$25,000.00 will require both a performance and a payment bond. Unless otherwise stated in the bid specifications, the performance bond requirements shall be 100% of the contract price. Unless otherwise state in the bid specifications, the payment bond requirements shall be 100% of the contract price. Both bonds shall be supplied at the signing of the contract.
8. **NON-PUBLIC WORKS BIDS:** A performance bond will be required for this bid. The amount of the bond will be 100% of the contract price unless otherwise indicated in the specifications. The performance bond shall be supplied at the signing of the contract.
9. **NON-PUBLIC WORKS BIDS:** A payment bond will be required for this bid. The amount of the bond will be 100% of the contract price unless otherwise indicated in the specifications. The payment bond shall be supplied at the signing of the contract.
10. Unless otherwise stated in the bid specifications, the successful bidder will be required to procure standard insurance policies evidencing Parish-mandated insurance requirements as indicted on the attached sheet. The current certificate of insurance must be submitted by low bidder within 10 days after bid opening to the Purchasing Department. Failure to comply will cause bid to be rejected. JEFFERSON PARISH reserves the right to award bid to the next lowest responsive and responsible bidder in this event.
11. A bid bond will be required with bid submission in the amount of 5% of the total bid, unless otherwise stated in the bid specifications. Acceptable forms shall be limited to cashier's check, certified check, or surety bid bond. All sureties must be in original format (no copies). If submitting a bid online, vendors must submit an electronic bid bond through the respective online clearinghouse bond management system(s) as indicated in the electronic bid solicitation on Central Auction House. No scanned paper copies of any bid bond will be accepted as part of the electronic bid submission.
12. This is a requirements contract to be provided on an as needed basis. JEFFERSON PARISH makes no representations on warranties with regard to minimum guaranteed quantities unless otherwise stated in the bid specifications.
13. Freight charges should be included in total cost when quoting. If not quoted FOB DELIVERED, freight must be quoted as a separate item. Bid may be rejected if not quoted FOB DELIVERED or if freight charges are not indicated on bid form.
14. **PUBLIC WORKS BIDS - Completed, Signed and Properly Notarized Affidavits (in Original Format) required;** Non-Conviction Affidavit, Non-Collusion Affidavit, Campaign Contribution Affidavit and E-Verify Affidavit must be completed, signed, notarized and submitted by low bidder within 10 days after bid opening to the Purchasing Department on all solicitations for construction, alteration or demolition of public building or project, including but not limited to requirements found in LSA-RS 38:2212.9; LSA-RS 38:2212.10; LSA-RS 38:2224; Code of Ordinances, Jefferson Parish, Louisiana, Sec 2-923.1. Failure to comply will cause bid to be rejected; the Parish reserves the right to award bid to the next lowest responsive and responsible bidder in this event. For the convenience of vendors, all affidavits have been combined into one form entitled PUBLIC WORKS BID AFFIDAVIT. This affidavit must be submitted in its original format for the bid to be considered responsive.
15. **NON PUBLIC WORK BIDS - Completed, Signed and Properly Notarized Affidavits (in Original Format) required;** Non-Collusion Affidavit, and Campaign Contribution Affidavit must be completed, signed, notarized and submitted by low bidder with bid submission or within 10 days after bid opening to the Purchasing Department. See LSA-RS 38:2212.10; LSA-RS 38:2224; Code of Ordinances, Jefferson Parish, Louisiana, Sec 2-923.1 Failure to comply will cause bid to be rejected; the Parish reserves the right to award bid to the next lowest responsive and responsible bidder in this event. For the convenience of vendors, all affidavits have been combined into one form entitled NON PUBLIC WORKS BID AFFIDAVIT. This affidavit must be submitted in its original format for the bid to be considered responsive.
16. Since a bid surety is required, bid response may not be faxed. Bid submission will only be accepted online or as delivered to the Purchasing Department, 200 Derbigny Street, Suite 4400, Gretna, LA 70053 by 11am on the bid due date. All sureties must be in original format (no copies).

It shall be the duty of every parish officer, employee, department, agency, special district, board, and commission: and the duty of every contractor, subcontractor, and licensee of the parish, and the duty of every applicant for certification of eligibility for a parish contract or program, to cooperate with the Inspector General in any investigation, audit, inspection, performance review, or hearing pursuant to Jefferson Parish Code of Ordinances Section 2-155.10(19). By submitting a bid, vendor acknowledges this and will abide by all provisions of the referenced Jefferson Parish Code of Ordinances.

DATE: 7/20/2015

INVITATION TO BID
THIS IS NOT AN ORDER

Page: 4

BID NO.: 50-00113945

JEFFERSON PARISH

PURCHASING DEPARTMENT
P.O. BOX 9
GRETN, LA. 70054-0009
504-364-2678

VENDOR:

uniforms manufacturing, inc

BUYER:

DREAMEY

As per LSA-RS 47:301 et seq., all governmental bodies are excluded from payment of sales taxes to any Louisiana taxing body. Quotations shall be based on F.O.B. Agency warehouse or jobsite, anywhere within the Parish as designated by the Purchasing Department.

JEFFERSON PARISH reserves the right to cancel all or any part of an order if not shipped promptly. No charges will be allowed for parking or cartage unless specified in quotation. The order must not be filled at a higher price than quoted. JEFFERSON PARISH reserves the right to cancel at any time and for any reason by issuing a THIRTY (30) day written notice to the contractor.

JEFFERSON PARISH is expecting all products to be new and all work is to be done in a workman-like manner, according to standard practices. Any deviations or alterations from the specifications must be indicated and backup documentation supplied with your quotation.

DELIVERY: FOB JEFFERSON PARISH

INDICATE DELIVERY DATE ON EQUIPMENT AND SUPPLIES

30

INDICATE STARTING TIME (IN DAYS) FOR CONSTRUCTION WORK

N/A

INDICATE COMPLETION TIME (IN DAYS) FOR CONSTRUCTION WORK

N/A

In the event that addenda are issued with this bid, bidders MUST acknowledge all addenda on the bid form. Bidder must acknowledge receipt of an addendum on the bid form as indicated. Failure to acknowledge any addendum on the bid form will result in bid rejection.

Acknowledge Receipt of Addenda: NUMBER:

NUMBER:

NUMBER:

NUMBER:

LOUISIANA CONTRACTOR'S LICENSE NO.: (if applicable)

N/A

*** ALL BIDDERS MUST COMPLETE SECTION BELOW ***

FIRM NAME:

Uniforms manufacturing, inc

SIGNATURE:

(Must be signed here)

Emily Pelligreen

TITLE:

Contract Admin.

PRINT OR TYPE NAME:

Emily Pelligreen

ADDRESS:

PO Box 12716

CITY, STATE:

Scottsdale, AZ

ZIP:

85267-2716

TELEPHONE:

480-368-9316

FAX:

480-368-8556

EMAIL ADDRESS:

emily@unidir.com

TOTAL PRICE OF ALL BID ITEMS: \$ 2474.48

INVITATION TO BID FROM JEFFERSON PARISH - continued

BID NO.: 50-00113945

SEALED BID

ITEM NUMBER	QUANTITY	U/M	DESCRIPTION OF ARTICLES	UNIT PRICE QUOTED	TOTALS
1	3.00	ONLY	TWO (2) YEAR CONTRACT FOR UNIFORMS FOR JEFFERSON PARISH DEPARTMENT OF INSPECTION & CODE ENFORCEMENT.		
			1000 Unisex Polo Shirt with pockets and cuffs, 60% cotton/ 40% polyester	12.60	37.80
2	3.00	ONLY	Short sleeve pique easy care shirt with finished placket and three horn buttons Square bottom with side vents. COLOR: Light Grey STYLE: Tri Mountain 096 Element Ltd SIZES: SMALL ***FOR ALL POLO SHIRTS*** Department LOGO with Gold Outer band to be embroidered into shirts above left pocket, not sewn on.		
			1001 Unisex Polo Shirt with pocket cuffs, 60% cotton/ 40% polyester	12.60	37.80
3	3.00	ONLY	Short sleeve pique easy care shirt with finished placket and three horn buttons. Square bottom with side vents. COLOR: Light Grey STYLE: Tri Mountain 096 Element Ltd SIZES: MEDIUM		
			1002 Unisex Polo Shirt with pocket and cuffs, 60% cotton/ 40% polyester	12.60	37.80
4	3.00	ONLY	Short sleeve pique easy care shirt with finished placket and three horn buttons. Square bottom with side vents. COLOR: Light Grey STYLE: Tri Mountain 096 Element Ltd SIZES: LARGE		
			1003 Unisex Polo Shirt with pocket and cuffs, 60% cotton/ 40% polyester	12.60	37.80
5	4.00	ONLY	Short sleeve pique easy care shirt with finished placket and three horn buttons. Square bottom with side vents. COLOR: Light Grey STYLE: Tri Mountain 096 Element Ltd SIZES: XL		
			1004 Unisex Polo Shirt with pocket and cuffs, 60% cotton/ 40% polyester	14.00	56.00
			Short sleeve pique easy care shirt with finished placket and three horn buttons. Square bottom with side vents. COLOR: Light Grey STYLE: Tri Mountain 096 Element Ltd. SIZES: 2XL		

INVITATION TO BID FROM JEFFERSON PARISH - continued

BID NO.: 50-00113945

SEALED BID

ITEM NUMBER	QUANTITY	U/M	DESCRIPTION OF ARTICLES	UNIT PRICE QUOTED	TOTALS
6	3.00	ONLY	1005 Unisex Polo Shirt with pocket and cuffs, 60% cotton/ 40% polyester Short sleeve pique easy care shirt with finished placket and three horn buttons Square bottom with side vents. COLOR: Light Grey STYLE: Tri Mountain 096 Element Ltd SIZES: 3XL	15.40	46.20
7	3.00	ONLY	1006 Unisex Polo Shirt with pocket and cuffs, 60% polyester/ 40% polyester Short sleeve pique easy care shirt with finished placket and three horn buttons Square bottom with side vents. COLOR: Light Grey STYLE: Tri Mountain 096 Element Ltd SIZES: 4XL	16.80	50.40
8	3.00	ONLY	2000 Unisex Polo Shirt with pocket and cuffs, 60% cotton/ 40% polyester Short sleeve pique easy care shirt with finished placket and three horn button Square bottom with side vents. COLOR: Charcoal Gray STYLE: Tri Mountain 096 Element Ltd SIZES: SMALL ***FOR ALL POLO SHIRTS*** Department LOGO with Gold Outer band to be embroidered into shirts above left pocket, not sewn on.	12.60	37.80
9	5.00	ONLY	2001 Unisex Polo Shirt with pocket and cuffs, 60% cotton/ 40% polyester Short sleeve pique easy care shirt with finished placket and three horn buttons. Square bottom with side vents. COLOR: Charcoal Gray STYLE: Tri Mountain 096 Element Ltd SIZES: MEDIUM	12.60	63.00
10	1.00	ONLY	2002 Unisex Polo Shirt with pocket and cuffs, 60% cotton/ 40% polyester Short sleeve pique easy care shirt with finished placket and three horn buttons. Square bottom with side vents. COLOR: Charcoal Gray STYLE: Tri Mountain 096 Element Ltd SIZES: LARGE	12.60	12.60
11	5.00	ONLY	2003 Unisex Polo Shirt with pocket and cuffs, 60% cotton/ 40% polyester	12.60	63.00

INVITATION TO BID FROM JEFFERSON PARISH - continued

BID NO.: 50-00113945

SEALED BID

ITEM NUMBER	QUANTITY	U/M	DESCRIPTION OF ARTICLES	UNIT PRICE QUOTED	TOTALS
12	3.00	ONLY	Short sleeve pique easy care shirt with finished placket and three horn buttons. Square bottom with side vents. COLOR: Charcoal Gray STYLE: Tri Mountain 096 Element Ltd SIZES: XL 2004 Unisex Polo Shirt with pocket and cuffs, 60% cotton/ 40% polyester	14.00	42.00
13	5.00	ONLY	Short sleeve pique easy care shirt with finished placket and three horn buttons Square bottom with side vents. COLOR: Charcoal Gray STYLE: Tri Mountain 096 Element Ltd SIZES: 2XL 2005 Unisex Polo Shirt with pocket and cuffs, 60% cotton/ 40% polyester	15.40	77.00
14	5.00	ONLY	Short sleeve pique easy care shirt with finished placket and three horn buttons Square bottom with side vents. COLOR: Charcoal Gray STYLE: Tri Mountain 096 Element Ltd SIZES: 3XL 2006 Unisex Polo Shirt with pocket and cuffs, 60% cotton/ 40% polyester	16.80	84.00
15	1.00	ONLY	Short sleeve pique easy care shirt with finished placket and three horn buttons Square bottom with side vents. COLOR: Charcoal Gray STYLE: Tri Mountain 096 Element Ltd SIZES: 4XL 3000 Unisex Snagproof tipped pocket polo collar/cuffs, 6.6 oz wt. 100% polyester,	19.59	19.59
16	1.00	ONLY	flat knit collar/cuff with tipping, 3-button placket, side vents FOR MANAGERS COLOR: Charcoal/light gray STYLE: Short sleeve Cornerstone CS415 SIZES: SMALL ***FOR ALL POLO SHIRTS*** Department LOGO with Gold Outer band to be embroidered into shirts above left pocket, not sewn on 3001 Unisex Snagproof tipped pocket polo collar/cuffs, 6.6 oz.wt. 100% polyester flat knit collar/cuffs with tipping 3-button placket, side vents	19.59	19.59

INVITATION TO BID FROM JEFFERSON PARISH - continued

BID NO.: 50-00113945

SEALED BID

ITEM NUMBER	QUANTITY	U/M	DESCRIPTION OF ARTICLES	UNIT PRICE QUOTED	TOTALS
17	1.00	ONLY	FOR MANAGERS COLOR: Charcoal/light gray STYLE: Short sleeve Cornerstone CS415 SIZES: MEDIUM 3002 Unisex Snagproof tipped pocket polo collar/cuffs, 6.6 oz.wt. 100% polyester flat knit collar/cuff with tipping 3-button placket, side vents FOR MANAGERS COLOR: Charcoal/light gray STYLE: Short sleeve Cornerstone S415 SIZES: LARGE	19.59	19.59
18	1.00	ONLY	3003 Unisex Snagproof tipped pocket polo collar/cuffs, 6.6oz.wt. 100% polyester flat knit collar/cuff with tipping 3-button placket, side vents FOR MANAGERS COLOR: Charcoal/light gray STYLE: Short sleeve Cornerstone CS415 SIZES: XL	19.59	19.59
19	1.00	ONLY	3004 Unisex Snagproof tipped pocket polo collar/cuffs, 6.6 oz.wt. 100% polyester flat knit collar/cuff with tipping 3-button placket, side vents FOR MANAGERS COLOR: Charcoal/light gray STYLE: Short sleeve Cornerstone CS415 SIZES: 2XL	20.99	20.99
20	1.00	ONLY	3005 Unisex Snagproof tipped pocket polo collar/cuffs, 6.6oz.wt. 100% polyester flat knit collar/cuff with tipping 3-button placket, side vents FOR MANAGERS COLOR: Charcoal/light gray STYLE: Short sleeve Cornerston CS415 SIZES: 3XL	23.79	23.79
21	1.00	ONLY	3006 Unisex Snagproof tipped pocket polo collar/cuffs, 6.6 oz.wt. 100% polyester flat knit collar/cuff with tipping 3-button placket, side vents FOR MANAGERS COLOR: Charcoal/light gray STYLE: Short sleeve Cornerstone CS415 SIZES: 4XL	25.19	25.19
22	1.00	ONLY	4000 Executive Oxford Dress Shirt Unisex 60% Combed cotton/40% polyester, 4.75oz.	14.35	14.35

INVITATION TO BID FROM JEFFERSON PARISH - continued

BID NO.: 50-00113945

SEALED BID

ITEM NUMBER	QUANTITY	U/M	DESCRIPTION OF ARTICLES	UNIT PRICE QUOTED	TOTALS
23	1.00	ONLY	<p>Two piece lined, button down collar seven button front, one hemmed spade pocket and box pleated back FOR INSPECTORS COLOR: Blue with White Stripes STYLE: S/S SR60 Red Kap SIZES: 14-1/2" to 17-1/2" inch neck ***FOR ALL EXECUTIVE OXFORDS SS** Department LOGO patch to be sewn on left sleeve 1 1/2 inches down from shoulder seam. Department to provide patches.</p> <p>4001 Executive Oxford Dress Shirt Unisex 60% Combed cotton/40% polyester, 4.75oz.</p>	17.25	17.25
24	1.00	ONLY	<p>Two piece lined, button down collar seven button front, one hemmed spade pocket and box pleated back FOR INSPECTORS COLOR: Blue with White Stripes STYLE: S/S SR60 Red Kap SIZES: 18 to 19-1/2"</p> <p>4002 Executive Oxford Dress Shirt Unisex 60% Combed cotton/40% polyester, 4.75oz.</p>	17.25	17.25
25	1.00	ONLY	<p>Two piece lined, button down collar seven button front, one hemmed spade pocket and box pleated back FOR INSPECTORS COLOR: Blue with White Stripes STYLE: S/S SR60 Red Kap SIZES: 16 to 20 Long</p> <p>4003 Executive Oxford Dress Shirt Unisex 60% Combed cotton/40% polyester, 4.75oz.</p>	28.60	28.60
26	1.00	ONLY	<p>Two piece lined, button down collar seven button front, one hemmed spade pocket and box pleated back FOR INSPECTORS COLOR: Blue with White Stripes STYLE: S/S SR60 Red Kap SIZES: 21 to 22 Lone</p> <p>5000 Executive Oxford Dress Shirt Unisex 60% Combed cotton/40% polyester, 4.75oz.</p> <p>Two piece lined, button down collar seven button front, one hemmed spade style pocket and box pleated back FOR INSPECTORS COLOR: Blue with White Stripes STYLE: L/S SR70 Red Kap SIZES: 14-1/2" to 17-1/2" inch neck LENGTH: 32 inch to 38 inch sleeve ***FOR ALL EXECUTIVE OXFORDS LS***</p>	18.75	18.75
<p>Any sleeve length of 37" or 38" will cost \$31.15/ea</p>					

INVITATION TO BID FROM JEFFERSON PARISH - continued

BID NO.: 50-00113945

SEALED BID

ITEM NUMBER	QUANTITY	U/M	DESCRIPTION OF ARTICLES	UNIT PRICE QUOTED	TOTALS
27	1.00	ONLY	<p>Department LOGO Patch to be sewn on left sleeve 1-1/2 inches down from shoulder seam, Department to provide patches.</p> <p>5001 Executive Oxford Dress Shirt Unisex 60% Combed cotton/40% polyester, 4.75oz.</p>	18.75	18.75
28	1.00	ONLY	<p>Two piece lined, button down collar seven button front, one hemmed spade pocket and box pleated back FOR INSPECTORS COLOR: Blue with White Stripes STYLE: L/S SR70 Red Kap SIZES: 18 to 20 inch neck and 16-1/2" to 17-1/2 inch neck LENGTH: 32 inch to 38 inch sleeve</p> <p>5002 Executive Oxford Dress Shirt Unisex 60% Combed cotton/40% polyester, 4.75oz.</p>	<p>*any sleeve length of 37" or 38" will cost \$31.15/ea</p> <p>31.15</p>	31.15
29	6.00	ONLY	<p>Two piece lined, button down collar seven button front, one hemmed spade pocket and box pleated back FOR INSPECTORS COLOR: Blue with White Stripes STYLE: L/S SR70 Red Kap SIZES: 21-1/2" inch neck LENGTH: 32 inch to 38 inch sleeve</p> <p>6000 Executive Oxford Dress Shirt Unisex 60% Combed cotton/40% polyester, 4.75oz.</p>	18.105	111.90
30	3.00	ONLY	<p>Two piece lined, button down collar seven button front, one hemmed spade pocket and box pleated back FOR INSPECTORS COLOR: Grey with White Stripes STYLE: S/S SR60 Red Kap SIZES: 14-1/2" to 27-1/2" inch neck</p> <p>6001 Executive Oxford Dress Shirt Unisex 60% Combed cotton/40% polyester, 4.75oz.</p>	18.105	55.95
31	3.00	ONLY	<p>Two piece lined, button down collar seven button front, one hemmed spade pocket and box pleated back FOR INSPECTORS COLOR: Grey with White Stripes STYLE: S/S SR60 Red Kap SIZES: 18 to 19-1/2" inch neck</p> <p>6002 Executive Oxford Dress Shirt Unisex 60% Combed cotton/40% polyester, 4.75oz.</p>	18.105	55.95

INVITATION TO BID FROM JEFFERSON PARISH - continued

BID NO.: 50-00113945

SEALED BID

ITEM NUMBER	QUANTITY	U/M	DESCRIPTION OF ARTICLES	UNIT PRICE QUOTED	TOTALS
32	3.00	ONLY	COLOR: Grey with White Stripes STYLE: S/S SR60 Red Kap SIZES: 16 TO 20 inch neck 6003 Executive Oxford Dress Shirt Unisex 60% Combed cotton/40% polyester, 4.75oz. Two piece lined, button down collar seven button front, one hemmed spade pocket and box pleated back FOR INSPECTORS COLOR: Grey with White Stripes STYLE: S/S SR60 Red Kap SIZES: 21 TO 22 inch neck	31.08	93.24
33	3.00	ONLY	7000 Executive Oxford Dress Shirt Unisex 60% Combed cotton/40% polyester, 4.75oz. Two piece lined, button down collar seven button front, one hemmed spade pocket and box pleated back FOR INSPECTORS COLOR: Grey with White Stripes STYLE: L/S SR70 Red Kap SIZES: 14-1/2" to 17-1/2" inch neck LENGTH: 32 inch to 38 inch sleeve	110.99	50.97
34	3.00	ONLY	7001 Executive Oxford Dress Shirt Unisex 60% Combed cotton/40% polyester, 4.75oz. Two piece lined, button down collar seven button front, one hemmed spade pocket and box pleated back FOR INSPECTORS COLOR: Grey with White Stripes STYLE: L/S SR70 Red Kap SIZES: 18 TO 20 and 16-1/2" to 17-1/2" inch neck LENGTH: 32 inch to 38 inch sleeve	20.30	60.90
35	4.00	ONLY	7002 Executive Oxford Dress Shirt Unisex 60% Combed cotton/40% polyester, 4.75oz. Two piece lined, button down collar seven button front, one hemmed spade pocket and box pleated back FOR INSPECTORS COLOR: Grey with White Stripes STYLE: L/S SR70 Red Kap SIZES: 21-1/2" inch neck LENGTH: 32 inch to 38 inch sleeve	33.85	135.40
36	1.00	ONLY	8000 Team Charger Jackets with Hood 100% polyester Taslan shell 100% polyester heavyweight fleece body and hood lining	34.99	34.99

* any sleeve length of
36", 37", or 38" will
cost \$ 33.85

* any sleeve length
of 37" or 38" will cost
\$33.85

INVITATION TO BID FROM JEFFERSON PARISH - continued

BID NO.: 50-00113945

SEALED BID

ITEM NUMBER	QUANTITY	U/M	DESCRIPTION OF ARTICLES	UNIT PRICE QUOTED	TOTALS
37	3.00	ONLY	100% polyester sleeve lining with 2.5oz polyfill Hood with drawcord and toggles Front zippered pockets Interior pockets ***FOR ALL TEAM CHARGER JACKETS*** DEPARTMENT LOGO PATCH TO BE SEWN ON LEFT SLEEVE 1 1/2 INCHES DOWN FROM SHOULDER SEAM. DEPARTMENT TO PROVIDE PATCHES. Color: Battleship Grey Style: Port Authority J327 Or equal value and style	34.99	104.97
38	4.00	ONLY	8001 Team Charger Jackets with Hood 100% Polyester Taslan shell 100% Polyester heavyweight fleece body and hood lining 100% Polyester sleeve lining with 2.5 oz polyfill Hood with drawcord and toggles Front zippered pockets Interior pockets COLOR: BATTLESHIP GREY SIZE: MEDIUM STYLE: Port Authority J327 or equal value and style	34.99	139.96
39	4.00	ONLY	8002 Team Charger Jackets with Hood 100% Polyester Taslan shell 100% Polyester heavyweight fleece body and hood lining 100% Polyester sleeve lining with 2.5 oz polyfill Hood with drawcord and toggles Front zippered pockets Interior Pockets COLOR: BATTLESHIP GREY SIZE: LARGE STYLE: Port Authority J327 or equal value and style	34.99	139.96
			8003 Team Charger Jackets with Hood 100% Polyester Taslan shell 100% Polyester heavyweight fleece body and hood lining 100% polyester sleeve lining with 2.5 oz polyfill Hood with drawcord and toggles Front zippered pockets Interior pockets COLOR: BATTLESHIP GREY SIZE: XL STYLE: Port Authority J327		

INVITATION TO BID FROM JEFFERSON PARISH - continued

BID NO.: 50-00113945

SEALED BID

ITEM NUMBER	QUANTITY	U/M	DESCRIPTION OF ARTICLES	UNIT PRICE QUOTED	TOTALS
			or equal value and style		
40	3.00	ONLY	8004 Team Charger Jacket with Hood 100% Polyester Taslan shell 100% Polyester heavyweight fleece body and hood lining 100% Polyester sleeve lining with 2.5 oz polyfill Hood with drawcord and toggle Front zippered pockets Interior pocket COLOR: BATTLESHIP GREY SIZE: XL - 2XL?? STYLE: Port Authority J327 or equal value and style	36.39	109.17
41	1.00	ONLY	8005 Team Charger Jacket with Hood 100% Polyester Taslan shell 100% Polyester heavyweight fleece body and hood lining Hood with drawcord and toggle Front zippered pockets Interior pockets COLOR: BATTLESHIP GREY SIZE: 3X STYLE: Port Authority J327 or equal value and style	39.19	39.19
42	2.00	ONLY	8006 Team Charger Jacket with Hood 100% Polyester Taslan shell 100% Polyester heavyweight fleece body a and hood lining Hood with drawcord and toggle Front zippered pockets Interior pockets COLOR: BATTLESHIP GREY SIZE: 4X STYLE: Port Authority J327 or equal value and style	40.59	81.18
43	1.00	ONLY	9000 Team Charger Jacket 100% Polyester Taslan shell 100% Polyester heavyweight fleece body 100% Polyester sleeve lining with 2.5 oz polyfill Front zippered pockets Interior pockets COLOR: BATTLESHIP GREY SIZE: SMALL STYLE: Port Authority J328	27.99	27.99
44	1.00	ONLY	9001 Team Charger Jacket 100% Polyester Taslan shell	27.99	27.99

INVITATION TO BID FROM JEFFERSON PARISH - continued

BID NO.: 50-00113945

SEALED BID

ITEM NUMBER	QUANTITY	U/M	DESCRIPTION OF ARTICLES	UNIT PRICE QUOTED	TOTALS
45	1.00	ONLY	100% Polyester heavyweight fleece body 100% polyester sleeve lining with 2.5 oz polyfill Front zippered pockets Interior pockets COLOR: BATTLESHIP GREY SIZE: MEDIUM STYLE: Port Authority J328 or equal value and style	27.99	27.99
46	1.00	ONLY	9002 Team Charger Jacket 100% Polyester Taslan shell 100% Polyester heavyweight fleece body 100% Polyester sleeve lining with 2.5 oz polyfill Front zippered pockets Interior pockets COLOR: BATTLESHIP GREY SIZE: LARGE STYLE: Port Authority J328 or equal value and style	27.99	27.99
47	1.00	ONLY	9003 Team Charger Jacket 100% Polyester Taslan shell 100% Polyester heavyweight fleece body 100% Polyester sleeve lining with 2.5 oz polyfill Front zippered pockets Interior pockets COLOR: BATTLESHIP GREY SIZE: XL STYLE: Port Authority J328 or equal value and style	29.39	29.39
48	1.00	ONLY	9004 Team Charger Jacket 100% Polyester Taslan shell 100% Polyester heavyweight fleece body 100% Polyester sleeve lining with 2.5 oz polyfill Front zippered pockets Interior pockets COLOR: BATTLESHIP GREY SIZE: 2X STYLE: Port Authority J328 or equal value and style	32.19	32.19
			9005 Team Charger Jacket 100% Polyester Taslan shell 100% Polyester heavyweight fleece body 100% Polyester sleeve lining with 2.5 oz polyfill Front zippered pocket Interior pocket		

INVITATION TO BID FROM JEFFERSON PARISH - continued

BID NO.: 50-00113945

SEALED BID

ITEM NUMBER	QUANTITY	U/M	DESCRIPTION OF ARTICLES	UNIT PRICE QUOTED	TOTALS
49	1.00	ONLY	COLOR: BATTLESHIP GREY SIZE: 3X STYLE: Port Authority J328 or equal value and style 9006 Team Charger Jacket 100% Polyester Taslan shell 100% Polyester heavyweight fleece body 100% Polyester sleeve lining with 2.5 oz polyfill Front zippered pockets Interior pockets COLOR: BATTLESHIP GREY SIZE: 4X STYLE: Port Authority J328 or equal value and style	33.59	33.59
50	19.00	EA	9010 Baseball Cap Cotton and Poplin with braid Five panel mesh back Seamless poplin Front Plastic Snap Closure COLOR: Dark Gray Style C111CM Youngan or equal style and value SIZE: One size fits all *** DEPARTMENT LOGO PATCH TO BE SEWN ON FRONT CENTER OF CAP. DEPARTMENT TO PROVIDE PATCH.	4.00	76.00

Invitation to Bid from Jefferson Parish
Uniform Contract for the Jefferson Parish
Department of Inspection & Code Enforcement

Date: 07/20/2015

Bid No: 50-00113945

This is a two-year contract for Uniforms for the Jefferson Parish Department of Inspection & Code Enforcement. The two-year contract for Uniforms supplies all Inspectors, Chiefs, and Section Assistants of each Division of Inspection & Code Enforcement. This contract is for uniforms to be provided on an "as-needed-basis". Bid by Uniform Vendor is to include the sewing of patches and/or embroidery to be supplied by the Department of Inspection & Code Enforcement. The samples and styles of patches and embroidery information to be supplied to all bidding Vendors.

1000 – 1006 UNISEX POLO SHIRTS WITH POCKETS AND CUFFS (**Inspectors**)

Polo Shirt, 60% cotton/ 40% polyester, short sleeve pique easy care shirt

Finished placket

Three horn buttons.

Square bottoms with side vents

Or equal value and style

FOR INSPECTORS

Colors: Light Grey

Style: Tri Mountain 096 Element Ltd

Sizes: S – 4XL

Department LOGO with Gold Outer band to be embroidered into shirts above left pocket, not sewn on.

PAGE TWO (2)

2000 - 2006 UNISEX POLO SHIRT WITH POCKETS AND CUFFS (**Chiefs**)

Polo Shirt, 60% cotton/ 40% polyester, short sleeve pique easy care shirt

Finished placket

Three horn buttons

Square bottoms with side vents

Or equal style and value

FOR CHIEFS

Colors: Charcoal Grey

Style: Tri Mountain 096 Element Ltd

Sizes: S – 4XL

Department LOGO with Gold Outer band to be embroidered into shirts above left pocket, not sewn on.

3000 - 3006 UNISEX SNAG-PROOF TIPPED POCKET POLO (**Managers**)

Collar and Cuffs, 6.6oz wt. 100% polyester, flat knit collar/cuff with tipping, 3-button placket, 65/35 poly/cotton, Metal buttons with dyed to match plastic rims, side vents.

Or equal value and style

FOR MANAGERS

Colors: Charcoal/Light Gray

Style: Short Sleeve Cornerstone CS415

Sizes: S - 4XL

FOR ALL POLO SHIRTS

Department LOGO with Gold Outer Band to be embroidered into shirts above left pocket, not sewn on.

PAGE THREE (3)

4000 - 4003 EXECUTIVE OXFORD DRESS SHIRT, SHORT SLEEVE UNISEX (**Inspectors**)

Yarn Dyed Oxford, 60% combed cotton/40% polyester, two-piece lined, button-down

Collar, seven button front, one hemmed spade-style pocket, and box pleated back.

Or equal value and style.

FOR INSPECTORS

Color: Blue/White

Style: SR60, Short Sleeve (Red Kap)

Sizes: Neck – 14.5 – 22.5 **breakdown of all size requirements listed on Bid**

FOR ALL UNISEX OXFORD SHIRTS

Department LOGO with Gold Outer band to be embroidered into shirts above left pocket,

Not sewn on.

5000 – 5003 EXECUTIVE OXFORD DRESS SHIRT LONG SLEEVE UNISEX (**Inspectors**)

Yarn Dyed Oxford, 60% combed cotton/40% polyester, two-piece lined, button-down

Collar, seven button front, one hemmed spade-style pocket, box pleated back.

Or equal value and style.

Color: Blue/White

Style: SR70, Long Sleeve (Red Kap)

Sizes: Neck – 14.5 – 21.5 **breakdown of all size requirements listed on Bid**

FOR ALL UNISEX OXFORD SHIRTS

Department LOGO with Gold Outer band to be embroidered into shirts above left pocket,

Not sewn on.

PAGE FOUR (4)

6000 – 6003 EXECUTIVE OXFORD DRESS SHIRT SHORT SLEEVE UNISEX **(Inspectors)**

Yarn Dyed Oxford, 60% combed cotton/40% polyester, two-piece lined, button-down

Collar, seven button front, one hemmed spade-style pocket, box pleated back.

Or equal value and style.

Color: Grey/White

Style: SR60, Short Sleeve (Red Kap)

Sizes: Neck – 14.5 – 22.5 **breakdown of all size requirements listed on Bid**

FOR ALL UNISEX OXFORD SHIRTS

Department LOGO with Gold Outer band to be embroidered into shirts above left pocket,

Not sewn on.

7000 – 7003 EXECUTIVE OXFORD DRESS SHIRT LONG SLEEVE UNISEX **(Inspectors)**

Yarn Dyed Oxford, 60% combed cotton/40% polyester, two-piece lined, button-down

Collar, seven button front, one hemmed spade-style pocket, box pleated back.

Or equal value and style.

Color: Grey/White

Style: SR70, Long Sleeve (Red Kap)

Sizes: Neck – 14.5 – 21.5 **breakdown of all size requirements listed on Bid**

FOR ALL UNISEX OXFORD SHIRTS

Department LOGO with Gold Outer band to be embroidered into shirts above left pocket,

Not sewn on.

PAGE FIVE (5)

8000 – 8006 Team Charger Jacket with hood

100% polyester Taslan shell

100% polyester heavyweight fleece body and hood lining

100% polyester sleeve lining with 2.5 oz. polyfill

Hood with drawcord and toggles

Front zippered pockets

Interior pockets

Color: Battleship Grey

Style: Port Authority J327

Or equal value and style

Sizes: S – 4X

9000 – 9006 Team Charger Jacket without hood

100% polyester Taslan shell

100% polyester sleeve lining with 2.5 oz. polyfill

Front zippered pockets

Interior pockets

Color: Battleship Grey

Style: Port Authority J328

Or equal value and style

Sizes: S – 4X

9010 Baseball Cap

Cotton and Poplin with braid and five panel mesh back

Front Plastic Snap Closure

Color: Dark Grey

Size: One size fits all

Style: C111CM Youngan

Or equal style and value

Department LOGO Path to be sewn front center of cap







JEFFERSON PARISH DEPARTMENT OF PURCHASING

WWW.JEFFPARISH.NET

JOHN F. YOUNG, JR.
PARISH PRESIDENT

BRENDA J. CAMPOS
DIRECTOR

July 22, 2015

ADDENDUM # 1

Bid No.: 50-00113945

Bid Opening Date: 07/27/2015
Extended Date: 07/29/2015

For: Two year contract for uniforms for Code Enforcement.

This bid opening is being extended until Wednesday July 29, 2015.

Line #8004: The size should be 2XL.

A handwritten signature in blue ink, appearing to be "D. Reamey", is written over a circular stamp or seal.

Sincerely,

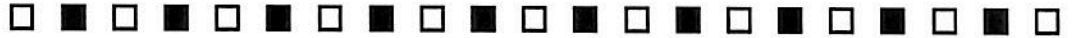
A handwritten signature in blue ink, "Donna Reamey", is written over a horizontal line.
Donna Reamey, Buyer I
Jefferson Parish Purchasing Department

Bidders must acknowledge all addenda on the bid form. Bidder acknowledges receipt of this addendum on the bid form as indicated. Failure to do so will result in bid rejection.

This addendum is a part of the contract documents and modifies the original bidding documents and specifications. The contents of this addendum shall be included in the contract documents. Changes made by this addendum shall take precedence over the documents of earlier date.



M E S S A G E



To:

UNIFORMS MANUFACTURING INC

FAX: 914803688556

From: DONNA REAMEY

JEFFERSON PARISH PURCHASING

FAX: 5043642693

TEL: 5043642684





096 Element Ltd.

All the features of Style 095, with a pocket. Men's 6 oz. 60% cotton/40% polyester short sleeve pique easy care golf shirt with clean-finished placket and three horn buttons. Features a square bottom with side vents and a pocket. Heat seal label for ultimate comfort.

MODEL



SIZES:

All Colors:

S | M | L | XL | 2XL | 3XL | 4XL

LT | XLT | 2XLT | 3XLT | 4XLT



COLORS



SIZE CHART

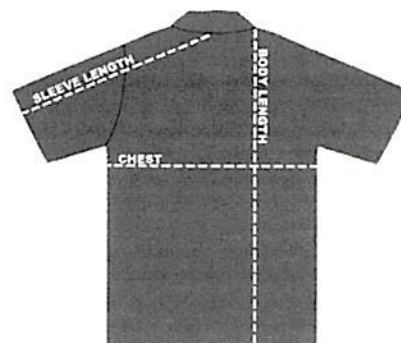
HOW TO MEASURE:

Smooth out wrinkles and lay garment flat on a table before measuring.

CHEST – Measure from 1" below armhole straight across chest.

SLEEVE LENGTH – Measure from center back neck to sleeve opening.

BODY LENGTH – Measure from high point shoulder to sweep opening.



SIZES (Measurement in inches)	S	M	L	XL	2XL	3XL	4XL
CHEST (1" below armhole)	21	22	24	26	27.5	29	30.5
SLEEVE LENGTH (From center back neck)	18.5	20.25	21.25	22.25	23	24	25
BODY LENGTH (From high point shoulder)	28	31	32	33	34	34.5	35
TALL SIZES (Measurement in inches)	LT	XLT	2XLT	3XLT	4XLT		
CHEST (1" below armhole)	24	26	27.5	29	30.5		
SLEEVE LENGTH (From center back neck)	23.25	24.25	25	26	27		
BODY LENGTH (From high point shoulder)	34	35	36	36.5	37		

CornerStone®**CornerStone® Select Snag-Proof Tipped Pocket Polo.
CS415**

A left chest pocket and tipping add a bit of style to this hardworking essential that also defies snags, resists wrinkling, fights odors and wicks moisture.

- 6.6-ounce snag-proof polyester
- Rental friendly
- Double-needle stitching throughout
- Tag-free label
- Flat knit collar and cuffs with tipping
- 3-button placket with dyed-to-match buttons
- Set-in, open hem sleeves
- Side vents

Due to the nature of 100% polyester performance fabrics, special care must be taken throughout the printing process.

CARE INSTRUCTIONS

Machine wash cold with like colors. Only non-chlorine bleach, if needed. Tumble dry low. Do not use fabric softener. Remove promptly. Cool iron if necessary. Do not dry clean.

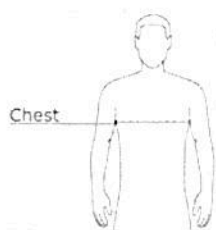
Tips For Effectively Screen Printing Polyester Fabrics



front



back

HOW TO MEASURE**CHEST**

With arms down at sides, measure around the upper body, under arms and over the fullest part of the chest.

SIZE CHART

	XS	S	M	L	XL	2XL	3XL	4XL
Chest	32-34	35-37	38-40	41-43	44-46	47-49	50-52	53-57

COLOR INFORMATION

Black, Smoke Grey, Charcoal, Light
PMS NTP BLACK, C/Gray



PMS 7540 C



Dark Green, Black
PMS 447 C



Dark Navy, Smoke
Grey
PMS 502 C



Red, Black
PMS 126 C



Royal, Black
PMS 7687 C



Tan, Black
PMS 7536 C

PORT AUTHORITY.

Port Authority® Hooded Charger Jacket. J327



Everything you want in a hardworking, insulated jacket, plus a versatile hood. Our budget-friendly Hooded Charger Jacket has traditional styling and it takes on the elements with warmth and water-resistant protection.

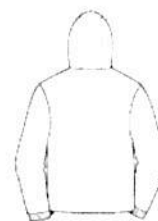
- 100% polyester Tarsan shell
- 100% polyester heavyweight fleece body and hood lining
- 100% polyester sleeve lining with 2.5 ounce polyfil
- Hood with drawcord and toggles
- Vislon® zipper
- Front zippered pockets
- Interior pockets
- Port Pocket™ for easy embroidery access
- Adjustable self-fabric tab cuffs with hook-and-loop closures
- Open hem with drawcord and toggles

CARE INSTRUCTIONS

Machine wash cold with like colors, only non-chlorine bleach if needed. Tumble dry low, remove promptly, cool iron if necessary. Do not dry clean.

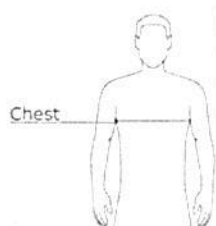


front



back

HOW TO MEASURE



CHEST

With arms down at sides, measure around the upper body, under arms and over the fullest part of the chest.

SIZE CHART

	XS	S	M	L	XL	2XL	3XL	4XL
Chest	32-34	35-37	38-40	41-43	44-46	47-49	50-52	53-57

COLOR INFORMATION



Battleship Grey
PMS 432 C



True Black
PMS NTR BLACK / PMS 447 C



True Heather
PMS 447 C



True Navy
PMS 633 C

PORT AUTHORITY.

Port Authority® Charger Jacket. J328



All the hardworking performance of our favorite bomber style jacket - at an exceptionally good price. The Charger Jacket withstands cold temps with a water-resistant shell, warm heavyweight fleece lining and insulated sleeves. Dyed to match lining and zippers give it a clean, cohesive look.

- 100% polyester Tarsan shell
- 100% polyester fleece body lining
- 100% polyester heavyweight sleeve lining with 3-pounce polyfill
- Vislon® zipper
- Front zippered pockets
- Interior pocket
- Rib knit cuffs and waistband
- Port Pocket™ for easy embroidery access

CARE INSTRUCTIONS

Machine wash cold with like colors. Only non-chlorine bleach if needed. Tumble dry low, remove promptly, cool iron if necessary. Do not dry clean.

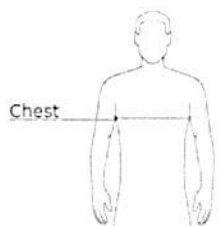


front



back

HOW TO MEASURE



Chest

CHEST

With arms down at sides, measure around the upper body, under arms and over the fullest part of the chest.

SIZE CHART

	XS	S	M	L	XL	2XL	3XL	4XL	5XL	6XL
Chest	32-33	35-37	38-40	41-43	44-46	47-49	50-52	53-57	58-60	61-63

COLOR INFORMATION

Battleship Grey
PMS 432 CTrue Black
PMS NTR BLACK C/PMS 147 C

True Hunter

True Navy
PMS 503 CTrue Royal
PMS 7637 C



YOUR **NUMBER ONE** SOURCE FOR PREMIUM
HEADWEAR, APPAREL & ACCESSORIES

32-285 - Cotton Twill Five Panel Pro Style Mesh Back Caps



Cotton Twill Five Panel Pro Style Mesh Back Caps

Style No.: 32-285

65% Polyester 35% Cotton Front
100% Nylon Mesh Back

The Professional Look
Firm Front Panel

Structured

- 5-panel cap
- Seamless Front Panel with Full Buckram
- Pro Stitch on Crown
- 8 Rows Stitching on Visor
- Matching Fabric Undervisor
- Matching Color Sweatband
- Plastic Adjustable Snap



001
Royal



002
Red



003
Black



004
Navy



005
Kelly



010
Maroon



014
Gray



016
White



017
Dk. Green



025
Char. Gray



032
Khaki



Executive Button-Down Striped Shirt - Long Sleeve - SR70

Fabric: 4.25 oz. Yarn-dyed oxford.

Blend: 60% Combed cotton / 40% Polyester.

Finish: Easy care.

Care: Light soil wash. Refer to Technical Bulletin RK-58 before processing.

Closure: Seven buttons w/ vertical buttonholes.

Collar: Two-piece, lined, banded, topstitched, button down.

Pocket: One hemmed spade style, triangular stitched corners.

Facing: Lined center pleat placket.

Other: Separate two piece, topstitched yoke. Tailored sleeve placket. Box pleat back. Single needle armhole.

***PO Box 12716
Scottsdale, AZ 85267-2716
(480) 368-9316 Phone (480) 368-8556 Fax
www.UMIDirect.com
Emily@UMIDirect.com***



Men's Executive Striped Button-Down Shirt - Short Sleeve - SR60

Fabric: 4.25 oz. Yarn-dyed oxford.

Blend: 60% Combed cotton / 40% Polyester.

Finish: Easy care.

Care: Light soil wash. Refer to Technical Bulletin RK-58 before processing.

Closure: Seven buttons w/ vertical buttonholes.

Collar: Two-piece, lined, banded, topstitched, button down.

Pocket: One hemmed spade style, triangular stitched corners.

Facing: Lined center pleat placket.

Other: Separate two piece, topstitched yoke. Tailored sleeve placket. Box pleat back. Single needle armhole.

PO Box 12716
Scottsdale, AZ 85267-2716
(480) 368-9316 Phone (480) 368-8556 Fax
www.UMIDirect.com
Emily@UMIDirect.com



**Cotton Twill Five Panel Pro Style Mesh
Back Caps**

Style No.: 32-285

65% Polyester 35% Cotton Front
100% Nylon Mesh Back

The Professional

Look Structured

Firm Front Panel

- 5-panel cap
- Seamless Front Panel with Full Buckram
- Pro Stitch on Crown
- 8 Rows Stitching on Visor
- Matching Fabric Undervisor
- Matching Color Sweatband
- Plastic Adjustable Snap

***PO Box 12716
Scottsdale, AZ 85267-2716
(480) 368-9316 Phone (480) 368-8556 Fax
www.UMIDirect.com
Emily@UMIDirect.com***



Uniforms Manufacturing Inc.



001
Royal



002
Red



003
Black



004
Navy



005
Kelly



010
Maroon



014
Gray



016
White



017
Dk. Green



025
Char. Gray



032
Khaki

PO Box 12716
Scottsdale, AZ 85267-2716
(480) 368-9316 Phone (480) 368-8556 Fax
www.UMIDirect.com
Emily@UMIDirect.com