

BID REJECTION FORM

Bid number: 50-00132095

Vendor Name: Cimsco, Inc.

Reasons for

Rejection: Vendor did not provide required 5% bid bond with bid.

REVIEWED BY:

Buyer Name:

Daphne Nelson

Date:

11/3/2020

Chief Buyer:

Misty A. Comandile

Date:

11/3/2020



CENTRALBIDDING
FROM CENTRAL AUCTION HOUSE

Toggle navigation

- [Home](#)
- [Central Bidding](#)
- [My CP](#)
- [Contact Us](#)
- [Create New](#)
 - [Create New Standard Envelope](#)
- [Logout \(DNELSON\)](#)

Central Bidding Time: Thu Oct 15 2020 14:05:03 GMT-0500 (Central Daylight Time)

Place a Bid: 5000132095 A SUPPLY OF CONCRETE STORM DRAIN CULVERTS TWO (2)
YEAR CONTRACT

Enter all required details into the fields below

Louisiana Contractor ID#

Enter all information required on the outside of the sealed envelope in the box below

<input type="text"/>	<input type="text"/>

Bid Bond #

Jefferson Parish Vendor #:

Upload Attachment(s)

While this site accepts various file types, sizes and quantities, the preferred method for delivering all of the appropriate and required bid documents is one single scanned PDF file. Vendors submitting bids with multiple uploaded images/photos of bid responses are solely responsible for clarity. If uploaded images/documents are not legible, the bidder's submission will be rejected. Please note all requirements in this bid package for electronic bid submission.

Upload a file

Click the Upload button in order to upload bid related documents

Central Bidding - Bids by Category

Public Agencies: Alabama - Arkansas - Louisiana - Mississippi -
South Carolina - Tennessee

Registration

Renew/Upgrade Membership

Contact Us



Central Auction House, LTD

DATE: 9/23/2020
BID NO.: 50-00132095

INVITATION TO BID
THIS IS NOT AN ORDER

Page: 1

JEFFERSON PARISH

PURCHASING DEPARTMENT
P.O. BOX 9
GRETN, LA. 70054-0009
504-364-2678

BUYER: DNELSON@jeffparish.net

CIMSCO INC

BIDS WILL BE RECEIVED IN THE WEST BANK PURCHASING DEPT, SUITE 4400, JEFFERSON PARISH GENERAL GOVERNMENT BUILDING, 200 DERBIGNY STREET, GRETN, LA 70053 UNTIL 2:00 PM, 10/15/2020 AND PUBLICLY OPENED THEREAFTER. For convenience, bidders may also submit bids in the East Bank Purchasing Department, Suite 404, Jefferson Parish Joseph S. Yenni Building, 1221 Elmwood Park Blvd., Jefferson LA 70123. However, if submitting bids on the day of bid opening, bidders must submit at the West Bank location only. All bids will be publicly opened at the West Bank location.

At no charge, bidders may also submit via Jefferson Parish's electronic procurement page by visiting www.jeffparishbids.net to register for this free site. Additional instructions are included in the text box highlighting electronic procurement.

LATE BIDS WILL NOT BE ACCEPTED

Unless submitting via online (see Page 3), each bid must be submitted in a sealed envelope bearing on the outside; the name of the Bidder, his address, and the name of the project for which the bid is submitted and the bid number.

NOTE: ONLY BIDS WRITTEN IN INK OR TYPEWRITTEN, AND PROPERLY SIGNED BY A MEMBER OF THE FIRM OR AUTHORIZED REPRESENTATIVE, WILL BE ACCEPTED. PENCIL AND/OR PHOTOSTATIC FIGURES OR SIGNATURES SHALL RESULT IN BID REJECTION.

INSTRUCTIONS FOR BIDDERS AND GENERAL CONDITIONS

THE FOLLOWING INSTRUCTIONS APPLY TO ALL BIDS

All bids submitted are subject to these instructions and general conditions and any special conditions and specifications contained herein, all of which are made part of this bid proposal reference. By submitting a bid, vendor agrees to comply with all provisions of Louisiana Law as well be in compliance with the Jefferson Parish Code of Ordinances, Louisiana Code of Ethics, applicable Jefferson Parish ethical standards and Jefferson Parish Resolution No. 113646 and/or Resolution No. 113647.

Jefferson Parish adheres to the Louisiana Code of Governmental Ethics, contained in Louisiana Revised Statutes Annotated, R.S. 42:1101, et seq. Vendor/Proposer by this submission, warrants that there are no "conflicts of interest" related to this procurement that would violate applicable Louisiana Law. Violation of the Louisiana Code of Governmental Ethics may result in rescission of contract, permit or licenses, and the imposition of fines and/or penalties, without contractual liability to the public in accordance with applicable law.

All vendors submitting bids should register as a Jefferson Parish vendor if not already yet registered. Registration forms may be downloaded from <http://purchasing.jeffparish.net> and by clicking on Vendor Information. Current W-9 forms with respective Tax Identification numbers and vendor applications may be submitted at any time; however, if your company is not registered and/or a current W-9 form is not on file, vendor registration is mandatory. Vendors may experience a delay in payment if your company is not a registered vendor with Jefferson Parish.

All quotations shall be based on F.O.B. Agency warehouse or job site, anywhere within the Parish as designated by the Purchasing Department. This provision does not apply to public works projects

JEFFERSON PARISH requires all products to be new (current) and all work must be performed according to standard practices for the project. Unless otherwise specified, no aftermarket parts will be accepted. Unless otherwise specified, all workmanship and materials must have at least one (1) year guaranty, in writing, from the date of delivery and/or acceptance of the project. Any deviations or alterations from the specifications must be indicated and/or supporting documentation supplied with bid submission.

Bidders should submit all questions in writing via email to the buyer's email address as indicated above, no later than Five (5) working days prior to the bid opening. Bid numbers should be mentioned in all requests. If submitting online, vendors may send questions via the E-Procurement site no later than Five (5) working days prior to the bid opening.

If this bid requires a pre-bid conference (see Additional Requirements section), bidders are advised that such conference will be held to allow bidders the opportunity to identify any discrepancies in the bid specifications and seek further clarification regarding instructions. The Purchasing Department will issue a written response to bidders' questions in the form of an Addendum. Please note that all official communication will be expressed in the form of an addendum.

Visit our website at [HTTP://PURCHASING.JEFFPARISH.NET](http://PURCHASING.JEFFPARISH.NET)

DATE: 9/23/2020

BID NO.: 50-00132095

CIMSCO INC

Page: 2

All formal Addenda require written acknowledgement on the bid form by the bidder. Failure to acknowledge an Addendum on the bid form shall cause the bid to be rejected. JEFFERSON PARISH reserves the right to award bid to next lowest responsive and responsible bidder in this event.

JEFFERSON PARISH will accept one price for each item unless otherwise indicated. Two or more prices for one item will result in bid rejection. Bidders are required to complete, sign and return the bid form and/or complete and return the associated line item pricing forms as indicated. Vendors must not alter the bid forms. Doing so will cause the bid to be rejected.

A corporate resolution or written evidence of the individual signing the bid having such authority must be submitted with the bid. Failure to comply will cause bid to be rejected. For corporate entities, such written evidence may be a printout of the Louisiana Secretary of State's website listing the signatory as an officer. Such printout shall be included with the bid submission. Bids submitted by Owners or Sole Proprietorships must include certification that he or she owns the entity for which the bid is signed. This documentation must be submitted with the bid. Failure to do so will result in bid rejection.

NOTE: A sample corporate resolution can be downloaded from our website <http://purchasing.jeffparish.net> or you may provide your own document. A sample certification of sole proprietorship can also be downloaded from our website <http://purchasing.jeffparish.net> or you may provide your own document.

INSTRUCTIONS FOR BIDDERS AND GENERAL CONDITIONS

A. AWARD OF CONTRACT: JEFFERSON PARISH reserves the right to award contracts or place orders on a lump sum or individual item basis, or such combination, as shall in its judgment be in the best interest of JEFFERSON PARISH. Every contract or order shall be awarded to the LOWEST RESPONSIVE and RESPONSIBLE BIDDER, taking into consideration the CONFORMITY WITH THE SPECIFICATIONS and the DELIVERY AND/OR COMPLETION DATE. SPLIT AWARDS MADE TO SEVERAL VENDORS WILL ONLY BE GRANTED TO THOSE DEEMED RESPONSIVE AND RESPONSIBLE.

All bid prices shall remain valid for 45 days. Jefferson Parish and the lowest responsive and responsible bidder(s) by mutual written consent may mutually agree to extend the deadline for award by one (1) or more extensions of thirty (30) calendar days.

PROTESTS: Only those vendors that submit bids in response to this solicitation may protest any element of the procurement, in writing to the Director of the Purchasing Department. Written protest must be received within 48 hours of the release of the bid tabulation by the Purchasing Department. After consultation, the Parish Attorney's Office will then respond to protests in writing. (For more information, please see Chapter 2, Article VII, Division 2, Sec. 2-914.1 of the Jefferson Parish Code of Ordinances.)

PREFERENCE: Unless federal funding is directly spent by Jefferson Parish for this purchase, preference is hereby given to materials, supplies, and provisions produced, manufactured or grown in Louisiana, quality being equal to articles offered by competitors outside the state. "LSA - R.S. 38:2251-2261"

B. USE OF BRAND NAMES AND STOCK NUMBERS: Where brand names and stock numbers are specified, it is for the purpose of establishing certain minimum standards of quality. Bids may be submitted for products of equal quality, provided brand names and stock numbers are specified. Complete product data may be required prior to award.

C. CANCELLATION OF CONTRACT: JEFFERSON PARISH reserves the right to cancel all or any part if not shipped promptly. No charges will be allowed for parking or cartage unless specified in quotation. The order must not be filled at a higher price than quoted. JEFFERSON PARISH reserves the right to cancel any contract at anytime and for any reason by issuing a THIRTY (30) day written notice to the contractor.

For good cause and as consideration for executing a contract with Jefferson Parish, vendor conveys, sells, assigns and transfers to Jefferson Parish or its assigns all rights, title and interest in and to all causes of action it may now or hereafter acquire under the antitrust laws of the United States and the State of Louisiana, relating to the particular good or services purchased or acquired by Jefferson Parish.

D. PRICES: Jefferson Parish is exempt from paying sales tax under LSA-R.S. 47:301 (8)(c). All prices for purchases by Jefferson Parish of supplies and materials shall be quoted in the unit of measure specified and unless otherwise specified, shall be exclusive of state and Parish taxes. The price quoted for work shall be stated in figures. In the event there is a difference in unit prices and totals, the unit price shall prevail.

Quantities listed are for bidding purposes only. Actual requirements may be more or less than quantities listed.

Bidders are not to exclude from participation in, deny the benefits of, or subject to discrimination under any program or activity, any person in the United States on the grounds of race, color, national origin, or sex; nor discriminate on the basis of age under the Age Discrimination Act of 1975, or with respect to an otherwise qualified handicapped individual as provided in Section 504 of the Rehabilitation Act of 1973, or on the basis of religion, except that any exemption from such prohibition against discrimination on the basis of religion as provided in the Civil Rights Act of 1964, or Title VI and VII of the Act of April 11, 1968, shall also apply. This assurance includes compliance with the administrative requirements of the Revenue Sharing final handicapped discrimination provisions contained in Section 51.55 (c), (d), (e), and (k)(5) of the Regulations. New construction or renovation projects must comply with Section 504 of the 1973 Rehabilitation Act, as amended, in accordance with the American National Standard Institute's specifications (ANSI A17.1-1961).

Jefferson Parish and its partners as the recipients of federal funds are fully committed to awarding a contract(s) to firm(s) that will provide high quality services and that are dedicated to diversity and to containing costs. Thus, Jefferson Parish strongly encourages the involvement of minority and/or woman-owned business enterprises (DBE's, including MBE's, WBE's and SBE's) to stimulate participation in procurement and assistance programs.

DATE: 9/23/2020

BID NO.: 50-00132095

INSTRUCTIONS FOR BIDDERS AND GENERAL CONDITIONS

Page: 3

CIMSCO INC

The purpose and intention of this invitation to bid is to afford all suppliers an equal opportunity to bid on all construction, maintenance, repair, operating supplies and/or equipment listed in this bid proposal. JEFFERSON PARISH WILL ACCEPT ONE BID ONLY FROM EACH VENDOR. Items bid must meet specifications.

Advertised bids will be tabulated and a copy of the tabulation will be forwarded to each responding bidder.

IN ACCORDANCE WITH STATE REGULATIONS JEFFERSON PARISH OFFERS ELECTRONIC PROCUREMENT TO ALL VENDORS

This electronic procurement system allows vendors the convenience of reviewing and submitting bids online. This is a secure site and authorized personnel have limited read access only. Bidders are encouraged to submit electronically using this free service; while the website accepts various file types, one single PDF file containing all appropriate and required bid documents is preferred. Bidders submitting uploaded images of bid responses are solely responsible for clarity. If uploaded images/documents are not legible, then bidder's submission will be rejected. Please note all requirements contained in this bid package for electronic bid submission.

Please visit our E-Procurement Page at www.jeffparishbids.net to register and view Jefferson Parish solicitations. For more information, please visit the Purchasing Department page at <http://purchasing.jeffparish.net>.

The general specifications for construction projects and the purchase of materials, services and/or supplies are those adopted by the JEFFERSON PARISH Council by Resolution No. 113646 or 113647 dated 12/09/09. The general conditions adopted by this resolution shall be considered as much a part of this document as if they were written wholly herein. A copy may be obtained from the Office of the Parish Clerk, Suite 6700, Jefferson Parish General Government Building, 200 Derbigny Street, Gretna, LA 70053. You may also obtain a copy by visiting the Purchasing Department webpage at <http://purchasing.jeffparish.net> and clicking on Online Forms.

ADDITIONAL REQUIREMENTS FOR THIS BID

PLEASE MATCH THE NUMBERS PRINTED IN THIS BOX WITH THE CORRESPONDING INSTRUCTIONS BELOW.

10, 11, 12, 13, 15, 17

1. All bidders must attend the MANDATORY pre-bid conference and will be required to sign in and out as evidence of attendance. In accordance with LSA R.S. 38:2212(I), all prospective bidders shall be present at the beginning of the MANDATORY pre-bid conference and shall remain in attendance for the duration of the conference. Any prospective bidder who fails to attend the conference or remain for the duration shall be prohibited from submitting a bid for the project.
2. Attendance to this pre-bid conference is optional. However, failure to attend the pre-bid conference shall not relieve the bidder of responsibility for information discussed at the conference. Furthermore, failure to attend the pre-bid conference and inspection does not relieve the successful bidder from the necessity of furnishing materials or performing any work that may be required to complete the work in accordance with the specification with no additional cost to the owner.
3. Contractor must hold current applicable JEFFERSON PARISH licenses with the Department of Inspection and Code Enforcement. Contractor shall obtain any and all permits required by the JEFFERSON PARISH Department of Inspection and Code Enforcement. The contractor shall be responsible for the payment of these permits. All permits must be obtained prior to the start of the project. Contractor must also hold any and all applicable Federal and State licenses. Contractor shall be responsible for the payment of these permits and shall obtain them prior to the start of the project.
4. A LA State Contractor's License will be required in accordance with LSA R.S. 37-2150 et. seq. and such license number will be shown on the outside of the bid envelope. Failure to comply will cause the bid to be rejected. Additionally if submitting the bid electronically, then the license number must be entered in the appropriate field in the Electronic Procurement system. Failure to comply will cause the bid to be rejected.
5. It is the bidder's responsibility to visit the job site and evaluate the job before submitting a bid.
6. Job site must be clean and free of all litter and debris daily and upon completion of the contract. Passageways must be kept clean and free of material, equipment, and debris at all times. Flammable material must be removed from the job site daily because storage will not be permitted on the premises. Precautions must be exercised at all times to safeguard the welfare of JEFFERSON PARISH and the general public.

DATE: 9/23/2020

BID NO.: 50-00132095

Page: 4

CIMSCO INC

INSTRUCTIONS FOR BIDDERS AND GENERAL CONDITIONS

7. **PUBLIC WORKS BIDS:** All awards for public works in excess of \$5,000.00 will be reduced to a formal contract which shall be recorded at the contractor's expense with the Clerk of Court and Ex-Officio Recorder of Mortgages for the Parish of Jefferson. A price list of recordation costs may be obtained from the Clerk of Court and Ex-Officio Recorder of Mortgages for the Parish of Jefferson. All awards in excess of \$25,000.00 will require both a performance and a payment bond. Unless otherwise stated in the bid specifications, the performance bond requirements shall be 100% of the contract price. Unless otherwise state in the bid specifications, the payment bond requirements shall be 100% of the contract price. Both bonds shall be supplied at the signing of the contract.
8. **NON-PUBLIC WORKS BIDS:** A performance bond will be required for this bid. The amount of the bond will be 100% of the contract price unless otherwise indicated in the specifications. The performance bond shall be supplied at the signing of the contract.
9. **NON-PUBLIC WORKS BIDS:** A payment bond will be required for this bid. The amount of the bond will be 100% of the contract price unless otherwise indicated in the specifications. The payment bond shall be supplied at the signing of the contract.
10. All bidders must comply with the requirements stated in the attached "Standard Insurance Requirements" sheet attached to this bid solicitation. Failure to comply with this instruction will result in bid rejection.
11. A bid bond will be required with bid submission in the amount of 5% of the total bid, unless otherwise stated in the bid specifications. Acceptable forms shall be limited to cashier's check, certified check, or surety bid bond. All sureties must be in original format (no copies) If submitting a bid online, vendors must submit an electronic bid bond through the respective online clearinghouse bond management system(s) as indicated in the electronic bid solicitation on Central Auction House. No scanned paper copies of any bid bond will be accepted as part of the electronic bid submission.
12. This is a requirements contract to be provided on an as needed basis. JEFFERSON PARISH makes no representations on warranties with regard to minimum guaranteed quantities unless otherwise stated in the bid specifications.
13. Freight charges should be included in total cost when quoting. If not quoted FOB DELIVERED, freight must be quoted as a separate item. Bid may be rejected if not quoted FOB DELIVERED or if freight charges are not indicated on bid form.
14. **PUBLIC WORKS BIDS - Completed, Signed and Properly Notarized Affidavits Required;** This applies to all solicitations for construction, alteration or demolition of public buildings or projects, in conformity with the provisions contained in LSA-RS 38:2212.9, LSA-RS 38:2212.10, LSA-RS 38:2224, and Sec 2-923.1 of the Jefferson Parish Code of Ordinances. For bidding purposes, all bidders must submit with bid submission COMPLETED, SIGNED and PROPERLY NOTARIZED Affidavits, including: Non-Conviction Affidavit, Non-Collusion Affidavit, Campaign Contribution Affidavit, Debt Disclosures Affidavit and E-Verify Affidavit. For the convenience of vendors, all affidavits have been combined into one form entitled PUBLIC WORKS BID AFFIDAVIT. This affidavit must be submitted in its original format, and without material alteration, in order to be compliant and for the bid to be considered responsive. A scanned copy of the completed, signed and properly notarized affidavit may be submitted with the bid, however, the successful bidder must submit the original affidavit in its original format and without material alteration upon contract execution. Failure to comply will result in the bid submission being rejected as non-responsive. The Parish reserves the right to award bid to the next lowest responsive and responsible bidder in this event.
15. **NON PUBLIC WORK BIDS - Completed, Signed and Properly Notarized Affidavits Required** in conformity with the provisions contained in LSA - RS 38:2224 and Sec 2-923.1 of the Jefferson Parish Code of Ordinances. For bidding purposes, all bidders must submit with bid submission COMPLETED, SIGNED and PROPERLY NOTARIZED Affidavits, including: Non-Collusion Affidavit, Debt Disclosures Affidavit and Campaign Contribution Affidavit. For the convenience of vendors, all affidavits have been combined into one form entitled NON PUBLIC WORKS BID AFFIDAVIT. This affidavit must be submitted in its original format, and without material alteration, in order to be compliant and for the bid to be considered responsive. A scanned copy of the completed, signed and properly notarized affidavit may be submitted with the bid, however, the successful bidder must submit the original affidavit in its original format and without material alteration upon contract execution. Failure to comply will result in the bid submission being rejected as non-responsive. The Parish reserves the right to award bid to the next lowest responsive and responsible bidder in this event.
16. The ensuing contract for this bid solicitation may be eligible for FEMA reimbursement and/or Federal funding/reimbursement. As such, the referenced appendix will be applicable accordingly and shall be considered a part of the bid documents. All applicable certifications must be duly completed, signed and submitted with bid submission. Failure to submit applicable certifications with bid submission will result in bid rejection.
17. For this project, the Contractor shall not pay any state or local sales or use taxes on materials and equipment which are affixed and made part of the immovable property of the project or which permanently incorporated in the project (hereinafter referred to as "applicable materials and equipment"). All purchases of applicable materials or equipment shall be made by the contractor on behalf of and as the agent of Jefferson Parish (Owner), a political subdivision of the State of Louisiana. No state and local sales and use taxes are owned on applicable materials and equipment under the provisions of Act 1029 of the 1991 Regular Session - Louisiana Revised Statute 47:301(8)(c). Owner will furnish contractor a certificate form which certifies that Owner is not required to pay such state or local sales and use taxes, and contractor shall furnish a copy of such certificate to all vendors or suppliers of the applicable materials and equipment

It shall be the duty of every parish officer, employee, department, agency, special district, board, and commission: and the duty of every contractor, subcontractor, and licensee of the parish, and the duty of every applicant for certification of eligibility for a parish contract or program, to cooperate with the Inspector General in any investigation, audit, inspection, performance review, or hearing pursuant to JPCO 2-155.10(19). By signing this document, every corporation, partnership, or person contracting with PARISH, whether by cooperative endeavor, intergovernmental agreement, bid, proposal, application or solicitation for a parish contract, and every application for certification of eligibility for a parish contract or program, attests that it understands and will abide by all provisions of JPCO 2-155.10.

DATE: 9/23/2020

Page: 5

BID NO.: 50-00132095

CIMSCO INC

BID FORM
Non Public Works

All Public Work Projects are required to use the Louisiana Uniform Public Work Bid Form

All prices must be held firm unless an escalation provision is requested in this bid. Jefferson Parish will allow one escalation during the term of the contract, which may not exceed the U.S. Bureau of Labor Statistics National Index for all Urban Consumers, unadjusted 12 month figure. The most recently published figure issued at the time an adjustment is requested will be used. A request must be made in writing by the vendor, and the escalation will only be applied to purchases made after the request is made.

Are you requesting an escalation provision?

YES _____ NO X

MAXIMUM ESCALATION PERCENTAGE REQUESTED _____%

INITIAL BID PRICES WILL REMAIN FIRM THROUGH THE DATE OF 10-15-2022

For the purposes of comparison of bids when an escalation provision is requested, Jefferson Parish will apply the maximum escalation percentage quoted by the bidder to the period to which it is applied in the bid. The initial price and the escalation will be used to calculate the total bid price. It will be assumed, for comparison of prices only, that an equal amount of material or labor is purchased each month throughout the entire contract.

DELIVERY: FOB JEFFERSON PARISH

INDICATE DELIVERY DATE ON EQUIPMENT AND SUPPLIES

Stock to 3 weeks

LOUISIANA CONTRACTOR'S LICENSE NO.: (if applicable) _____

THIS SECTION MUST BE COMPLETED BY BIDDER:

FIRM NAME: CIMSCO INC

ADDRESS: 1840 L&A Road

CITY, STATE: Metairie LA ZIP: 70001

TELEPHONE: 504 835-7319 FAX: 504 832-0820

EMAIL ADDRESS: Tim@cimscointc.com

In the event that addenda are issued with this bid, bidders MUST acknowledge all addenda on the bid form. Bidder must acknowledge receipt of an addendum on the bid form as indicated. Failure to acknowledge any addendum on the bid form will result in bid rejection.

Acknowledge Receipt of Addenda: NUMBER: Addendum #1

NUMBER: _____

NUMBER: _____

NUMBER: _____

TOTAL PRICE OF ALL BID ITEMS: \$ 3,245,230.00

AUTHORIZED SIGNATURE: Anthony Landriel

Timothy Landriel

Printed Name

TITLE: Sales

SIGNING INDICATES YOU HAVE READ AND COMPLY WITH THE INSTRUCTIONS AND CONDITIONS.

NOTE: All bids should be returned with the BID NUMBER and BID OPENING DATE indicated on the outside of the envelope submitted to the Purchasing Department.

DATE: 9/23/2020

INVITATION TO BID FROM JEFFERSON PARISH - continued

Page 6

BID NO.: 50-00132095

SEALED BID

ITEM NUMBER	QUANTITY	U/M	DESCRIPTION OF ARTICLES	UNIT PRICE QUOTED	TOTALS
			A SUPPLY OF CONCRETE STORM DRAIN CULVERTS FOR THE JEFFERSON PARISH DEPARTMENT OF PUBLIC WORKS FOR ALL DRAINAGE DISTRICTS, EAST AND WEST BANK TWO (2) YEAR CONTRACT		
1	120.00	LF	0010 - 12 inch Diameter, Class III Reinforced Concrete Pipe (ASTM C-76)	34.00	4,080.00
			C-443 with O-Rings Group 1		
2	120.00	LF	0020 - 15 inch Diameter, Class III Reinforced Concrete Pipe (ASTM C-76)	22.00	2,640.00
			C-443 with O-Rings Group 1		
3	120.00	LF	0030 - 8 inch Diameter, Class III Reinforced Concrete Pipe (ASTM C-76)	88.00	10,560.00
			C-443 with O-Rings Group 1		
4	120.00	LF	0040 - 21 inch Diameter, Class III Reinforced Concrete Pipe (ASTM C-76)	58.00	6,960.00
			C-443 with O-Rings Group 1		
5	120.00	LF	0050 - 24 inch Diameter, Class III Reinforced Concrete Pipe (ASTM C-76)	36.00	4,320.00
			C-443 with O-Rings Group 1		
6	120.00	LF	0060 - 27 inch Diameter, Class III Reinforced Concrete Pipe (ASTM C-76)	96.00	11,520.00
			C-443 with O-Rings Group 1		
7	120.00	LF	0070 - 30 inch Diameter, Class III Reinforced Concrete Pipe (ASTM C-76)	54.00	6,480.00

DATE: 9/23/2020

Page 7

INVITATION TO BID FROM JEFFERSON PARISH - continued

BID NO.: 50-00132095

SEALED BID

ITEM NUMBER	QUANTITY	U/M	DESCRIPTION OF ARTICLES	UNIT PRICE QUOTED	TOTALS
8	120.00	LF	C-443 with O-Rings Group 1		
			0080 - 36 Inch Diameter, Class III Reinforced Concrete Pipe (ASTM C-76)	66.00	7,920.00
9	120.00	LF	C-443 with O-Rings Group 1		
			0090 - 42 Inch Diameter, Class III Reinforced Concrete Pipe (ASTM C-76)	82.00	10,560.00
10	120.00	LF	C-443 with O-Rings Group 1		
			0100 - 48 Inch Diameter, Class III Reinforced Concrete Pipe (ASTM C-76)	118.00	14,160.00
11	120.00	LF	C-443 with O-Rings Group 1		
			0110 - 54 inch Diameter, Class III Reinforced Concrete Pipe (ASTM C-76)	132.00	15,840.00
12	120.00	LF	C-443 with O-Rings Group 1		
			0120 - 60 Inch Diameter, Class III Reinforced Concrete Pipe (ASTM C-76)	160.00	19,200.00
13	120.00	LF	C-443 with O-Rings Group 1		
			0130 - 72 Inch Diameter, Class III Reinforced Concrete Pipe (ASTM C-76)	223.00	26,760.00
14	2.00	LF	C-443 with O-Rings Group 1		
			0140 - Precast Concrete Channel Section	2400.00	4800.00

DATE: 9/23/2020

INVITATION TO BID FROM JEFFERSON PARISH - continued

Page 8

BID NO.: 50-00132095

SEALED BID

ITEM NUMBER	QUANTITY	U/M	DESCRIPTION OF ARTICLES	UNIT PRICE QUOTED	TOTALS
15	2.00	LF	4 foot x 4 foot x 6 foot Group 2		
			0150 - Precast Concrete Channel Section	2400.00	4800.00
16	2.00	LF	6 foot x 4 foot x 6 foot Group 2		
			0160 - Precast Concrete Channel Section	3400.00	6800.00
17	2.00	LF	10 foot x 4 foot x 6 foot Group 2		
			0170 - Precast Concrete Channel Section	3100.00	6200.00
18	2.00	LF	8 foot x 4 foot x 6 foot Group 2		
			0180 - Precast Concrete Channel Section	3400.00	6800.00
19	2.00	LF	10 foot x 5 foot x 6 foot Group 2		
			0190 - Precast Concrete Channel Section	3900.00	7800.00
20	120.00	LF	8 foot x 5 foot x 6 foot Group 2		
			0200 - Precast Concrete Box Culvert	305.00	36,600.00
21	120.00	LF	Span 4 foot, Rise 4 foot, Length 6 foot Group 3		
			0210 - Precast Concrete Box Culvert	540.00	64,800.00
22	120.00	LF	Span 7 foot, Rise 4 foot, Length 6 foot Group 3		
			0220 - Precast Concrete Box Culvert	575.00	69,000.00

DATE: 9/23/2020

INVITATION TO BID FROM JEFFERSON PARISH - continued

Page 9

BID NO.: 50-00132095

SEALED BID

ITEM NUMBER	QUANTITY	U/M	DESCRIPTION OF ARTICLES	UNIT PRICE QUOTED	TOTALS
23	120.00	LF	Span 8 foot, Rise 4 foot, Length 6 foot Group 3		
			0230 - Precast Concrete Box Culvert	560.00	67,200.00
24	120.00	LF	Span 6 foot, Rise 5 foot, Length 6 foot Group 3		
			0240 - Precast Concrete Box Culvert	580.00	69,600.00
25	120.00	LF	Span 8 foot, Rise 5 foot, Length 6 foot Group 3		
			0250 - Precast Concrete Box Culvert	600.00	72,000.00
26	120.00	LF	Span 6 foot, Rise 6 foot, Length 6 foot Group 3		
			0260 - Precast Concrete Box Culvert	690.00	82,800.00
27	120.00	LF	Span 8 foot, Rise 6 foot, Length 6 foot Group 3		
			0265 - Precast Concrete Box Culvert	710.00	85,200.00
28	120.00	LF	Span 8 foot, Rise 7 foot, Length 6 foot Group 3		
			0270 - Precast Concrete Box Culvert	954.00	114,480.00
29	120.00	LF	Span 10 foot, Rise 6 foot, Length 6 foot Group 3		
			0280 - Precast Concrete Box Culvert	775.00	93,000.00
30	120.00	LF	Span 8 foot, Rise 8 foot, Length 6 foot Group 3		
			0285 - Precast Concrete Box Culvert	990.00	118,800.00

DATE: 9/23/2020

Page 10

INVITATION TO BID FROM JEFFERSON PARISH - continued

BID NO.: 50-00132095

SEALED BID

ITEM NUMBER	QUANTITY	U/M	DESCRIPTION OF ARTICLES	UNIT PRICE QUOTED	TOTALS
31	120.00	LF	Span 10 foot, Rise 7 foot, Length 6 foot Group 3		
			0290 - Precast Concrete Box Culvert	1200.00	144,000.00
32	2.00	EA	Span 10 foot, Rise 8 foot, Length 6 foot Group 3		
			0300 - Precast Concrete Catchbasins, Frames, and Grates	1650.00	3,300.00
33	2.00	EA	2 foot Deep, Type 1 Catchbasin Group 4		
			0310 - Precast Concrete Catchbasins, Frames, and Grates	1900.00	3,800.00
34	2.00	EA	3 foot Deep, Type 1 Catchbasin Group 4		
			0320 - Precast Concrete Catchbasins, Frames, and Grates	2400.00	4,800.00
35	2.00	EA	4 foot Deep, Type 1 Catchbasin Group 4		
			0330 - Precast Concrete Catchbasins, Frames, and Grates	1400.00	2,800.00
36	2.00	EA	2 foot Deep, Type 2 Catchbasin Group 4		
			0340 - Precast Concrete Catchbasins, Frames, and Grates	1695.00	3,390.00
37	2.00	EA	3 foot Deep, Type 2 Catchbasins Group 4		
			0350 - Precast Concrete Catchbasins, Frames, and Grates	1950.00	3,900.00

DATE: 9/23/2020

INVITATION TO BID FROM JEFFERSON PARISH - continued

Page 11

BID NO.: 50-00132095

SEALED BID

ITEM NUMBER	QUANTITY	U/M	DESCRIPTION OF ARTICLES	UNIT PRICE QUOTED	TOTALS
38	2.00	EA	4 foot Deep, Type 2 Catchbasin Group 4 0360 - Precast Concrete Catchbasins, Frames, and Grates	2250.00	4,500.00
39	2.00	EA	2 foot Deep, Type 3 Catchbasin Group 4 0370 - Precast Concrete Catchbasins, Frames, and Grates	2750.00	5,500.00
40	2.00	EA	3 foot Deep, Type 3 Catchbasin Group 4 0380 - Precast Concrete Catchbasins, Frames, and Grates	3300.00	6,600.00
41	2.00	EA	4 foot Deep, Type 3 Catchbasin Group 4 0390 - Precast Concrete Catchbasins, Frames, and Grates	2000.00	4,000.00
42	2.00	EA	2 foot Deep, Type 4 Catchbasin Group 4 0400 - Precast Concrete Catchbasins, Frames, and Grates	2800.00	5,600.00
43	2.00	EA	3 foot Deep, Type 4 Catchbasin Group 4 0410 - Precast Concrete Catchbasins, Frames, and Grates	4800.00	9,600.00
44	2.00	EA	4 foot Deep, Type 4 Catchbasin Group 4 0420 - Precast Concrete Catchbasins, Frames, and Grates	135.00	270.00

DATE: 9/23/2020

Page 12

INVITATION TO BID FROM JEFFERSON PARISH -continued

BID NO.: 50-00132095

SEALED BID

ITEM NUMBER	QUANTITY	U/M	DESCRIPTION OF ARTICLES	UNIT PRICE QUOTED	TOTALS
45	2.00	EA	18 inch x 18 inch Frames and Grates Group 4 0430 - Precast Concrete Catchbasins, Frames, and Grates	290.00	580.00
46	2.00	EA	24 inch x 24 inch Frames and Grates Group 4 0440 - Precast Concrete Catchbasins, Frames, and Grates	615.00	1,230.00
47	2.00	EA	24 inch x 36 inch Frames and Grates Group 4 0450 - Precast Concrete Catchbasins, Frames, and Grates	948.00	1,896.00
48	120.00	LF	36 inch x 36 inch Frames and Grates Group 4 0460 - Reinforced Concrete Arch Pipe, Tongue and Groove Ram-Nek Joint, ASTM C-506 A = pipe per foot with one (1) Gasket Ram-Nek only unit price per foot. B = pipe per foot with two (2) Gasket Ram-Nek only unit price per foot. 13-1/3 inch x 22 inch, Class III 1 inch Ram-Nek (A) Group 5	39.00	4,680.00
49	120.00	LF	0470 - Reinforced Concrete Arch Pipe, Tongue and Groove Ram-Nek Joint, ASTM C-506 A = pipe per foot with one (1) Gasket Ram-Nek only unit price per foot. B = pipe per foot with two (2) Gasket Ram-Nek only unit price per foot.	39.00	4,680.00

DATE: 9/23/2020

INVITATION TO BID FROM JEFFERSON PARISH - continued

Page 13

BID NO.: 50-00132095

SEALED BID

ITEM NUMBER	QUANTITY	U/M	DESCRIPTION OF ARTICLES	UNIT PRICE QUOTED	TOTALS
50	120.00	LF	13-1/3 inch x 22 inch, Class III 1 inch Ram-Nek (B) Group 5 0500 - Reinforced Concrete Arch Pipe, Tongue and Groove Ram-Nek Joint, ASTM C-506 A = pipe per foot with one (1) Gasket Ram-Nek only unit price per foot. B = pipe per foot with two (2) Gasket Ram-Nek only unit price per foot. 18 inch x 28-1/2 inch Class III, 1 inch Ram-Nek (A) Group 5	49.00	5,880.00
51	120.00	LF	0510 - Reinforced Concrete Arch Pipe, Tongue and Groove Ram-Nek Joint, ASTM C-506 A = pipe per foot with one (1) Gasket Ram-Nek only unit price per foot. B = pipe per foot with two (2) Gasket Ram-Nek only unit price per foot. 18 inch x 28-1/2 inch Class III, 1 inch Ram-Nek (B) Group 5	54.00	6,480.00
52	120.00	LF	0520 - Reinforced Concrete Arch Pipe, Tongue and Groove Ram-Nek Joint, ASTM C-506 A = pipe per foot with one (1) Gasket Ram-Nek only unit price per foot. B = pipe per foot with two (2) Gasket Ram-Nek only unit price per foot. 22-9/16 inch x 36-1/4 inch Class III, 1 inch Ram-Nek (A) Group 5	58.00	6,960.00
53	120.00	LF	0530 - Reinforced Concrete Arch Pipe, Tongue and Groove Ram-Nek Joint, ASTM C-506	58.00	6,960.00

DATE: 9/23/2020

Page 14

INVITATION TO BID FROM JEFFERSON PARISH - continued

BID NO.: 50-00132095

SEALED BID

ITEM NUMBER	QUANTITY	U/M	DESCRIPTION OF ARTICLES	UNIT PRICE QUOTED	TOTALS
54	120.00	LF	<p>A = pipe per foot with one (1) Gasket Ram-Nek only unit price per foot.</p> <p>B = pipe per foot with two (2) Gasket Ram-Nek only unit price per foot.</p> <p>22-9/16 Inch x 36-1/4 inch Class III, 1 inch Ram-Nek (B)</p> <p>Group 5</p> <p>0540 - Reinforced Concrete Arch Pipe, Tongue and Groove Ram-Nek Joint,</p> <p>ASTM C-506</p>	84.00	10,080.00
55	120.00	LF	<p>A = pipe per foot with one (1) Gasket Ram-Nek only unit price per foot.</p> <p>B = pipe per foot with two (2) Gasket Ram-Nek only unit price per foot.</p> <p>26-5/8 Inch x 43-3/4 inch Class III, 1-1/2 Inch Ram-Nek (A)</p> <p>Group 5</p> <p>0550 - Reinforced Concrete Arch Pipe, Tongue and Groove Ram-Nek Joint,</p> <p>ASTM C-506</p>	84.00	10,080.00
56	120.00	LF	<p>A = pipe per foot with one (1) Gasket Ram-Nek only unit price per foot.</p> <p>B = pipe per foot with two (2) Gasket Ram-Nek only unit price per foot.</p> <p>26-5/8 inch x 43-3/4 inch Class III, 1-1/2 Inch Ram-Nek (B)</p> <p>Group 5</p> <p>0560 - Reinforced Concrete Arch Pipe, Tongue and Groove Ram-Nek Joint,</p> <p>ASTM C-506</p>	58.00	6,960.00
57	120.00	LF	<p>A = pipe per foot with one (1) Gasket Ram-Nek only unit price per foot.</p> <p>B = pipe per foot with two (2) Gasket Ram-Nek only unit price per foot.</p> <p>31-5/16 inch x 36-1/4 inch Class III, 1-1/2 Inch Ram-Nek (A)</p> <p>Group 5</p> <p>0570 - Reinforced Concrete Arch Pipe, Tongue and Groove Ram-Nek Joint,</p>	58.00	6,960.00

DATE: 9/23/2020

Page 15

INVITATION TO BID FROM JEFFERSON PARISH - continued

BID NO.: 50-00132095

SEALED BID

ITEM NUMBER	QUANTITY	U/M	DESCRIPTION OF ARTICLES	UNIT PRICE QUOTED	TOTALS
58	120.00	LF	ASTM C-506 A = pipe per foot with one (1) Gasket Ram-Nek only unit price per foot. B = pipe per foot with two (2) Gasket Ram-Nek only unit price per foot. 31-5/16 inch x 36-1/4 inch Class III, 1-1/2 inch Ram-Nek (B) Group 5 0580 - Reinforced Concrete Arch Pipe, Tongue and Groove Ram-Nek Joint,	135.00	16,200.00
59	120.00	LF	ASTM C-506 A = pipe per foot with one (1) Gasket Ram-Nek only unit price per foot. B = pipe per foot with two (2) Gasket Ram-Nek only unit price per foot. 36 inch x 58-1/2 inch Class III, 1-3/4 inch Ram-Nek (A) Group 5 0590 - Reinforced Concrete Arch Pipe, Tongue and Groove Ram-Nek Joint,	135.00	16,200.00
60	120.00	LF	ASTM C-506 A = pipe per foot with one (1) Gasket Ram-Nek only unit price per foot. B = pipe per foot with two (2) Gasket Ram-Nek only unit price per foot. 36inch x 58-1/2 inch Class III, 1-3/4 inch Ram-Nek (B) Group 5 0600 - Reinforced Concrete Arch Pipe, Tongue and Groove Ram-Nek Joint,	175.00	21,000.00
			ASTM C-506 A = pipe per foot with one (1) Gasket Ram-Nek only unit price per foot. B = pipe per foot with two (2) Gasket Ram-Nek only unit price per foot. 40-1/2 inch x 65 inch Class III, 1-3/4 inch Ram-Nek (A)		

DATE: 9/23/2020

Page 16

INVITATION TO BID FROM JEFFERSON PARISH - continued

BID NO.: 50-00132095

SEALED BID

ITEM NUMBER	QUANTITY	U/M	DESCRIPTION OF ARTICLES	UNIT PRICE QUOTED	TOTALS
61	120.00	LF	<p>Group 5</p> <p>0610 - Reinforced Concrete Arch Pipe, Tongue and Groove Ram-Nek Joint,</p> <p>ASTM C-506</p> <p>A = pipe per foot with one (1) Gasket Ram-Nek only unit price per foot.</p> <p>B = pipe per foot with two (2) Gasket Ram-Nek only unit price per foot.</p> <p>40-1/4 inch x 65 inch Class III, 1-3/4 inch Ram-Nek (B)</p>	175.00	21,000.00
62	120.00	LF	<p>Group 5</p> <p>0620 - Reinforced Concrete Arch Pipe, Tongue and Groove Ram-Nek Joint,</p> <p>ASTM C-506</p> <p>A = pipe per foot with one (1) Gasket Ram-Nek only unit price per foot.</p> <p>B = pipe per foot with two (2) Gasket Ram-Nek only unit price per foot.</p> <p>45 inch x 73-1/2 inch Class III, 2 inch Ram-Nek (A)</p>	198.00	23,760.00
63	120.00	LF	<p>Group 5</p> <p>0630 - Reinforced Concrete Arch Pipe, Tongue and Groove Ram-Nek Joint,</p> <p>ASTM C-506</p> <p>A = pipe per foot with one (1) Gasket Ram-Nek only unit price per foot.</p> <p>B = pipe per foot with two (2) Gasket Ram-Nek only unit price per foot.</p> <p>45 inch x 73-1/2 inch Class III, 2 inch Ram-Nek (B)</p>	198.00	23,760.00
64	120.00	LF	<p>Group 5</p> <p>0640 - Reinforced Concrete Arch Pipe, Tongue and Groove Ram-Nek Joint,</p> <p>ASTM C-506</p> <p>A = pipe per foot with one (1) Gasket Ram-Nek only unit price per foot.</p>	305.00	36,600.00

DATE: 9/23/2020

Page 17

INVITATION TO BID FROM JEFFERSON PARISH - continued

BID NO.: 50-00132095

SEALED BID

ITEM NUMBER	QUANTITY	U/M	DESCRIPTION OF ARTICLES	UNIT PRICE QUOTED	TOTALS
65	120.00	LF	<p>B = pipe per foot with two (2) Gasket Ram-Nek only unit price per foot.</p> <p>54 inch x 88 inch Class III, 2 inch Ram-Nek (A)</p> <p>Group 5</p> <p>0650 - Reinforced Concrete Arch Pipe, Tongue and Groove Ram-Nek Joint,</p> <p>ASTM C-506</p> <p>A = pipe per foot with one (1) Gasket Ram-Nek only unit price per foot.</p> <p>B = pipe per foot with two (2) Gasket Ram-Nek only unit price per foot.</p> <p>54 inch x 88 inch Class III, 2 inch Ram-Nek (B)</p> <p>Group 5</p>	305.00	36,600.00
66	120.00	LF	<p>0660 - Reinforced Concrete Arch Pipe, Tongue and Groove Ram-Nek Joint,</p> <p>ASTM C-506</p> <p>A = pipe per foot with one (1) Gasket Ram-Nek only unit price per foot.</p> <p>B = pipe per foot with two (2) Gasket Ram-Nek only unit price per foot.</p> <p>62-5/8 inch x 102 inch Class III, 2 inch Ram-Nek (A)</p> <p>Group 5</p>	550.00	66,000.00
67	120.00	LF	<p>0670 - Reinforced Concrete Arch Pipe, Tongue and Groove Ram-Nek Joint,</p> <p>ASTM C-506</p> <p>A = pipe per foot with one (1) Gasket Ram-Nek only unit price per foot.</p> <p>B = pipe per foot with two (2) Gasket Ram-Nek only unit price per foot.</p> <p>62-5/8 inch x 102 inch Class III, 2 inch Ram-Nek (B)</p> <p>Group 5</p>	550.00	66,000.00
68	120.00	LF	<p>0680 - Reinforced Concrete Arch Pipe, Tongue and Groove Ram-Nek Joint,</p>	869.00	104,280.00

DATE: 9/23/2020

Page 18

INVITATION TO BID FROM JEFFERSON PARISH - continued

BID NO.: 50-00132095

SEALED BID

ITEM NUMBER	QUANTITY	U/M	DESCRIPTION OF ARTICLES	UNIT PRICE QUOTED	TOTALS
			ASTM C-506 A = pipe per foot with one (1) Gasket Ram-Nek only unit price per foot. B = pipe per foot with two (2) Gasket Ram-Nek only unit price per foot. 78-3/8 Inch x 122 inch Class III, 2 inch Ram-Nek (A) Group 5		
69	120.00	LF	0690 - Reinforced Concrete Arch Pipe, Tongue and Groove Ram-Nek Joint, ASTM C-506 A = pipe per foot with one (1) Gasket Ram-Nek only unit price per foot. B = pipe per foot with two (2) Gasket Ram-Nek only unit price per foot. 78-3/8 inch x 122 inch Class III, 2 inch Ram-Nek (B) Group 5	869.00	104,280.00
70	10.00	GL	0700 - Pipe Lubricant Group 6	78.00	780.00
71	120.00	FT	0710 - Safety End Treatments 12 inch Pipe, 6 to 1 Slope Group 7	879.00	105,480.00
72	120.00	FT	0720 - Safety End Treatments 15 inch Pipe, 6 to 1 Slope Group 7	1164.00	139,680.00
73	120.00	FT	0730 - Safety End Treatments 18 inch Pipe, 6 to 1 Slope Group 7	1790.00	214,800.00
74	120.00	FT	0740 - Safety End Treatments	1860.00	223,200.00

DATE: 9/23/2020

INVITATION TO BID FROM JEFFERSON PARISH - continued

Page 19

BID NO.: 50-00132095

SEALED BID

ITEM NUMBER	QUANTITY	U/M	DESCRIPTION OF ARTICLES	UNIT PRICE QUOTED	TOTALS
75	120.00	FT	24 inch Pipe, 6 to 1 Slope Group 7 0750 - Safety End Treatments	2300.00	276,000.00
76	120.00	FT	30 inch Pipe, 6 to 1 Slope Group 7 0760 - Safety End Treatments	2980.00	357,600.00
77	120.00	FT	36 inch Pipe, 6 to 1 Slope Group 7 0770 - Pipe, Concrete Elliptical	422.00	50,640.00
78	120.00	FT	3 Sided Concrete Arch Spans ASTM C-1502 12 foot Span, 8 foot Rise Group 8 0780 - Pipe, Concrete Elliptical	596.00	71,520.00
79	120.00	FT	3 Sided Concrete Arch Spans ASTM C-1502 14 foot Span, 8 foot Rise Group 8 0790 - Pipe, Concrete Elliptical	840.00	100,800.00
80	120.00	FT	3 Sided Concrete Arch Spans ASTM C-1502 16 foot Span, 8 foot Rise Group 8 0800 - Pipe, Concrete Elliptical	980.00	117,600.00
			3 Sided Concrete Arch Spans ASTM C-1502 20 foot Span, 8 foot Rise Group 8		

Two year contract for a supply of Concrete Storm Drain Culverts for the Jefferson Parish Department of Public Works – Drainage & All Jefferson Parish Agencies.

These specifications are prepared for a two (2) year supply of concrete storm drain culverts and related items used by the Department of Public Works for all drainage districts, east and west banks.

Vendor is requested to quote a written lump sum price for furnishing all quantities as hereon listed.

The delivery time for each purchase order shall not exceed thirty (30) calendar days. In the case that the vendor needs additional time for delivery, a written request to the Jefferson Parish Department of Public Works shall be required.

Vendor is to include all matter of his cost from inception of order to the site delivered and shall include and reflect same as part of his unit cost per foot bid quote.

SPECIFICATIONS

Reinforced Concrete Pipe

Reinforced Concrete Pipe for use as sewers shall conform to the latest current specifications of the A.S.T.M for reinforced concrete culvert, storm drain, and sewer pipe, designation C-76.

Reinforced Concrete Arch Pipe

Reinforced Concrete Arch Pipe shall conform to the latest current specifications of the ASTM for reinforced concrete arch culvert, storm drain, and sewer pipe designation C-76.

Rubber Gasket Joints

Rubber Gasket Joints shall conform to the latest specifications of the ASTM C-443 for joints for circular concrete sewer and culvert pipe using flexible watertight, rubber-type gaskets.

Specifications for precast concrete channel sections

Precast concrete channel sections shall be 10ft. wide with 4ft. high side walls and shall be designed to withstand side loads and moments in the side walls generated by equivalent HS-20 loading conditions. Each section shall have two 2in. diameter weep holes.

The joints shall be tongue and groove with a minimum 6in. depth, a maximum annular space of ½ inch and a maximum taper of 10 degrees. Ram-Nek joint material shall be included in the price bid per foot.

All sections shall be manufactured with four banding holes, one on each side at both ends of the section. These holes shall be approximately 15in. from the base of the section.

Material Properties

WWF (Min. yield) – 65,000 PSI
(ASTM A-82-76 & A185-73)

Conc. (Min.F'C) – 5,000 PSI

Soil Data

Unit Wt. – 120 lbs./ft.³
Active Coeff (KA) – 0.33

External water – at top of soil
Eff. Weight Coeff. -1.0

Capacity reduc. Factors
(From ACI 318-83)

Shear – 8.85
Compression – 0.70
Bending – 0.90

Loading Data

Load factor – LL-2.2 (Traffic HS-20)
Truck Axle Load – 32,000 lbs.
(HS.20, See AASHTO)

Maximum Backfill:
Height above Box – 10 Ft. (Paving Inclusive)

These pre-cast concrete channel sections are to be designed and used for the following applications.

1. As a ditch liner with earthen side slopes and HS-20 live loads parallel to the section. The maximum allowable depth from top of ground to top of channel wall is 10 feet.
2. As a ditch liner with a flat slab (pre-cast or poured in place) spanning the section keyed into each wall and HS-20 live loads parallel to the section. The maximum allowable cover on the slab is 10 feet.
3. As a 10FTx9FT box section made by inverting a second section over the first with a maximum cover of 10 feet and HS-20 live loads parallel to the sections. Paving is included in the maximum depth.

Specifications for Precast Concrete Box Culverts

Box culverts shall conform to the latest current revision of the ASTM specification C789 for precast reinforced concrete box sections for culverts, storm drains and sewers. The manufacturer must furnish a certificate that the box culverts do conform thereto and that it has been tested according to the ASTM specifications by a testing laboratory. The cost of all inspection and testing must be included in the prices bid for box culverts.

The joints shall be tongue and groove. Ram-Nek joint material shall be included in the price bid per foot for box culverts.

The following table illustrates relevant weights per foot for various size culverts.

Size in span	Feet rise	Length in. ft.	Wt. Per Ft. Lbs.
4	4	6	1500

8	4	4	2880
6	5	4	2650
8	5	4	3090
6	6	4	2930
8	6	4	3350
10	6	4	4700
8	8	6	3760
10	8	4	5200

Specifications for Precast Concrete Catch Basins and Drop Inlets

The reinforcing steel shall meet ASTM A-615 (Grade 60). The concrete shall have a compressive strength of 4500-5000 PSI in 28 days. The reinforcing shall be designed for AASHTO HS-20 loading conditions. The cost of cast iron castings shall be included in the bid price.

Group 1

Item 0020 thru 0130

Reinforced Concrete Pipe – ASTM C-76

Class III

C-443 with O-Rings

Group 2

Items 0140 thru 0190

Precast Concrete Channel Sections (Min. 6" Thickness)

Group 3

Items 0200 thru 0290

Precast Concrete Box Culverts

Group 4

0300 thru 0450

Precast Concrete Catchbasins

Group 5

Items 0460 thru 0690

Reinforced Concrete Arch Pipe Tongue and Groove, Ram-Nek Joint, ASTM C506

Group 6

Item 0700

Pipe Lubricant

Group 7

Items 0710 thru 0760

Safety End Treatments

Group 8

Items 0770 thru 0800

Pipe, Concrete Elliptical 3 sided concrete arch spans (ASTM C-1504)

Non-Public Works Bid Affidavit Instructions

- Affidavit is supplied as a courtesy to Affiants, but it is the responsibility of the affiant to insure the affidavit they submit to Jefferson Parish complies, in both form and content, with federal, state and parish laws.
- Affidavit must be signed by an authorized representative of the entity or the affidavit will not be accepted.
- Affidavit must be notarized or the affidavit will not be accepted.
- Notary must sign name, print name, and include bar/notary number, or the affidavit will not be accepted.
- Affiant **MUST** select either A or B when required or the affidavit will not be accepted.
- Affiants who select choice A must include an attachment or the affidavit will not be accepted.
- If both choice A and B are selected, the affidavit will not be accepted.
- Affidavit marked N/A will not be accepted.
- It is the responsibility of the Affiant to submit a new affidavit if any additional campaign contributions are made after the affidavit is executed but prior to the time the council acts on the matter.

Instruction sheet may be omitted when submitting the affidavit

STANDARD INSURANCE REQUIREMENTS FOR BIDDING PURPOSES

All required insurance under this bid shall conform to Jefferson Parish Resolution No. 113646 or No. 113647, as applicable. Contractors may not commence any work under any ensuing contract unless and until all required insurance and associated evidentiary requirements thereto have been met, along with any additional specifications contained in the **Invitation to Bid**. Except as where otherwise precluded by law, the Parish Attorney or his designee, with the concurrence of the Director of Risk Management or his designee, may agree on a case-by-case basis, to deviate from Jefferson Parish's standard insurance requirements, as provided in this Section. Vendors requesting deviation therefrom shall submit such requests in writing, along with compelling substantiation, to the Purchasing Department prior to the bid's due date. Any changes to the insurance requirements will be reflected in the bid specifications and addenda. Prior to contract execution and at all times thereafter during the term of such contract, contractors must provide and continuously maintain all coverages as required by the foregoing Resolutions, and the contract documents. Failure to do so shall be grounds for suspension, discontinuation or termination of the contract.

For bidding purposes, bidders must submit with bid submission a current (valid) insurance certificate evidencing the required coverages. Failure to comply will cause bid to be rejected. The current insurance certificate will be used for proof of insurance at time of evaluation. Thereafter, and prior to contract execution, the low bidder will be required to provide final insurance certificates to the Parish which shall name **the Jefferson Parish, its Districts Departments and Agencies under the direction of the Parish President and the Parish Council** as additional insureds regarding negligence by the contractor for the Commercial General Liability, Workmen's Compensation Insurance and the Comprehensive Automobile Liability policies. Additionally, said certificates should reflect the name of the Parish Department receiving goods and services and reference the respective Jefferson Parish bid number.

JEFFERSON PARISH REQUIRED STANDARD INSURANCE

☐ WORKER'S COMPENSATION INSURANCE

As required by Louisiana State Statute, exception; Employer's Liability, Section B shall be \$1,000,000 per occurrence when Work is to be over water and involves maritime exposures to cover all employees not covered under the State Worker's Compensation Act, otherwise this limit shall be no less than \$500,000 per occurrence.

Note: If your company is not required by law to carry workmen's compensation insurance, i.e. not a Louisiana company, sole employee of the company, then bidders must request a workmen's compensation insurance declaration affidavit prior to the bid opening date. This insurance declaration affidavit must be fully completed, signed, properly notarized and submitted with the bid. A scanned copy may be submitted with the bid; however, the successful bidder must submit the original affidavit in its original format and without material alteration upon contract execution. Failure to comply will result in the bid submission being

rejected as non-responsive. The Parish reserves the right to award bid to the next lowest responsive and responsible bidder in this event.

☐ **COMMERCIAL GENERAL LIABILITY**

Shall provide limits not less than the following: \$1,000,000.00 Combined Single Limit per Occurrence for bodily injury and property damage.

☐ **COMPREHENSIVE AUTOMOBILE LIABILITY**

Bodily injury liability \$1,000,000.00 each person; \$1,000,000.00 each occurrence.
Property Damage Liability \$1,000,000.00 each occurrence.

Note: This category may be omitted if bidders do not/will not utilize company vehicles for the project or do not possess company vehicles. Bidder must request an automobile insurance declaration affidavit prior to the bid opening date. This insurance declaration affidavit must be fully completed, signed, properly notarized and submitted with the bid. A scanned copy of the completed, signed and properly notarized affidavit may be submitted with the bid; however, the successful bidder must submit the original affidavit in its original format and without material alteration upon contract execution. Failure to comply will result in the bid submission being rejected as non-responsive. The Parish reserves the right to award bid to the next lowest responsive and responsible bidder in this event.

DEDUCTIBLES - The Parish Attorney with concurrence of the Director of Risk Management have waived the deductible section of the Terms and Conditions for all Invitations to Bid, until further notice.

UMBRELLA LIABILITY COVERAGE

An umbrella policy or excess may be used to meet minimum requirements.

FOR CONSTRUCTION AND RENOVATION PROJECTS:

The following are required unless otherwise specified in the bid. Such insurance is due upon contract execution.

1) **OWNER'S PROTECTIVE LIABILITY**

To be for the same limits of liability for bodily injury and property damage liability established for commercial general liability.

2) **BUILDER'S RISK INSURANCE**

The contractor shall maintain Builder's Risk Insurance at his own expense to insure both the owner (Parish of Jefferson) and contractor as their interest may appear.

Non-Public Works Bid

AFFIDAVIT

STATE OF Louisiana

PARISH/COUNTY OF Jefferson

BEFORE ME, the undersigned authority, personally came and appeared: _____

Timothy Randall, (Affiant) who after being by me duly sworn, deposed and said that
(he/she is the fully authorized Sales of Cimisco, Inc (Entity),
5000132095
the party who submitted a bid in response to Bid Number _____, to the Parish of
Jefferson.

Affiant further said:

Campaign Contribution Disclosures

(Choose A or B, if option A is indicated please include the required attachment):

Choice A _____

Attached hereto is a list of all campaign contributions, including the date and amount of each contribution, made to current or former elected officials of the Parish of Jefferson by Entity, Affiant, and/or officers, directors and owners, including employees, owning 25% or more of the Entity during the two-year period immediately preceding the date of this affidavit or the current term of the elected official, whichever is greater. Further, Entity, Affiant, and/or Entity Owners have not made any contributions to or in support of current or former members of the Jefferson Parish Council or the Jefferson Parish President through or in the name of another person or legal entity, either directly or indirectly.

Choice B X

there are NO campaign contributions made which would require disclosure under Choice A of this section.

Debt Disclosures

(Choose A or B, if option A is indicated please include the required attachment):

Choice A _____ Attached hereto is a list of all debts owed by the affiant to any elected or appointed official of the Parish of Jefferson, and any and all debts owed by any elected or appointed official of the Parish to the Affiant.

Choice B X There are **NO** debts which would require disclosure under Choice A of this section.

Affiant further said:

That Affiant has employed no person, corporation, firm, association, or other organization, either directly or indirectly, to secure the public contract under which he received payment, other than persons regularly employed by the Affiant whose services in connection with the construction, alteration or demolition of the public building or project or in securing the public contract were in the regular course of their duties for Affiant; and

[The remainder of this page is intentionally left blank.]

That no part of the contract price received by Affiant was paid or will be paid to any person, corporation, firm, association, or other organization for soliciting the contract, other than the payment of their normal compensation to persons regularly employed by the Affiant whose services in connection with the construction, alteration or demolition of the public building or project were in the regular course of their duties for Affiant.

Timothy Randall
Signature of Affiant

Timothy Randall
Printed Name of Affiant

SWORN AND SUBSCRIBED TO BEFORE ME
ON THE 25th DAY OF September, 2020.

Darcy L. Cooper
Notary Public
Darcy L. Cooper
Notary Public ID #87529
Louisiana Statewide Jurisdiction
My Commission is for Life
Printed Name of Notary

Notary/Bar Roll Number

My commission expires _____.

Notary Search - Detail

Name: MS. DARCY L. COOPER
Address: 501 GROVE AVE
METAIRIE, LA 70003
Phone: (504) 667-3103
Phone 2: (504) 450-8718
Notary ID Number: 87529
Parish: JEFFERSON with STATEWIDE JURISDICTION
Agency: N/A
Notary Type: Non Attorney
Status: Active
Commission Date: 10/14/2009
Oath Date: 10/12/2009
Surety Expiration Date: 09/26/2023
Annual Report Current: Yes

Notary Events

Suspension From: 12/14/2012 To: 12/19/2012
Parish Change Previous Parish: ST. CHARLES Previous Commission Date: 10/07/2008

Deceased, Inactivated, Leave of Absence, Pre-Assessment Registration, Pre-Assessment Taken, Resigned, Retirement, and Revoked events are not available prior to February 11, 2012.

[Back to Search Results](#)[New Search](#)

CORPORATE RESOLUTION

EXCERPT FROM MINUTES OF MEETING OF THE BOARD OF DIRECTORS OF
CIMSCO, INC.
INCORPORATED.

AT THE MEETING OF DIRECTORS OF CIMSCO, INC.
INCORPORATED, DULY NOTICED AND HELD ON February 6, 2020,
A QUORUM BEING THERE PRESENT, ON MOTION DULY MADE AND SECONDED. IT
WAS:

RESOLVED THAT Timothy Randall, BE AND IS HEREBY
APPOINTED, CONSTITUTED AND DESIGNATED AS AGENT AND ATTORNEY-IN-
FACT OF THE CORPORATION WITH FULL POWER AND AUTHORITY TO ACT ON
BEHALF OF THIS CORPORATION IN ALL NEGOTIATIONS, BIDDING, CONCERNS
AND TRANSACTIONS WITH THE PARISH OF JEFFERSON OR ANY OF ITS AGENCIES,
DEPARTMENTS, EMPLOYEES OR AGENTS, INCLUDING BUT NOT LIMITED TO, THE
EXECUTION OF ALL BIDS, PAPERS, DOCUMENTS, AFFIDAVITS, BONDS, SURETIES,
CONTRACTS AND ACTS AND TO RECEIVE ALL PURCHASE ORDERS AND NOTICES
ISSUED PURSUANT TO THE PROVISIONS OF ANY SUCH BID OR CONTRACT, THIS
CORPORATION HEREBY RATIFYING, APPROVING, CONFIRMING, AND ACCEPTING
EACH AND EVERY SUCH ACT PERFORMED BY SAID AGENT AND ATTORNEY-IN-
FACT.

I HEREBY CERTIFY THE FOREGOING TO BE
A TRUE AND CORRECT COPY OF AN
EXCERPT OF THE MINUTES OF THE ABOVE
DATED MEETING OF THE BOARD OF
DIRECTORS OF SAID CORPORATION, AND
THE SAME HAS NOT BEEN REVOKED OR
RESCINDED.

Ashley Riviere
SECRETARY-TREASURER

10/13/2020
DATE



JEFFERSON PARISH

DEPARTMENT OF PURCHASING

CYNTHIA LEE SHENG
PARISH PRESIDENT

RENNY SIMNO
DIRECTOR

October 7, 2020

ADDENDUM # 1

Bid Number: 50-00132095

Receipt Date: October 15, 2020

Description of Bid: Two (2) year contract for a supply of concrete storm drain culverts for Jefferson Parish Department of Public Works for all Drainage Districts East and West Bank

REVISION:

Bid Openings:

SEALED BIDS will be received until 2:00pm, October 15, 2020. All bids will be publicly opened at the West Bank location and via teleconference at 2:30 p.m., by calling the following number:

Dial-in Number: (504) 323-1800
Meeting ID: 181357

Bids will be accepted through Central Bidding or manual submission. Manually-submitted bids can be delivered to either Purchasing office location; however, if submitting bids on the day of the bid opening, bidders must submit at the West Bank location. Bids will be received until 2 p.m. The public bid opening and teleconference will begin at 2:30 p.m. of the bid opening date.

ADDITION:

Revised Purchasing Department Announcement is included in this addendum.

THE BID DUE DATE WILL REMAIN THE SAME OCTOBER 15, AT 2:00 PM.

Sincerely,

Daphne Nelson

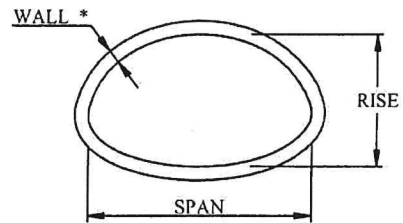
Daphne Nelson
Buyer II

GENERAL GOVERNMENT BLDG. – 200 DERBIGNY ST., SUITE 4400, GRETN, LA 70053
OFFICE 504.364.2678

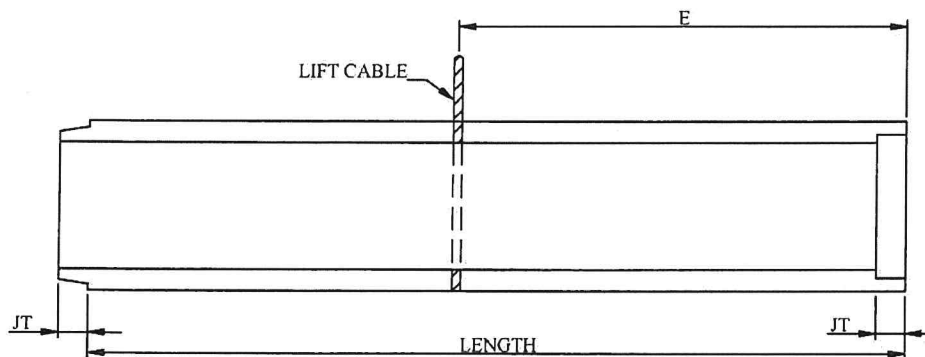
JOSEPH S. YENNI BLDG. – 1221 ELMWOOD PARK BLVD., SUITE 404, JEFFERSON, LA 70123
OFFICE 504.364.2678

EMAIL: PURCHASING@JEFFPARISH.NET WEBSITE: WWW.JEFFPARISH.NET

* WALL THICKNESS VARIES FROM END TO END DUE TO TAPER IN FORM JACKET



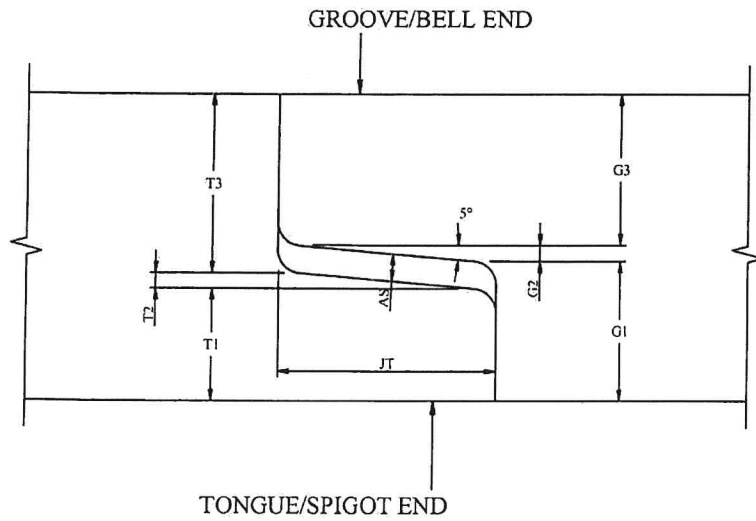
SIZE	WALL *	SPAN	RISE
15	3	18	11
18	3 - 1/8	22	13
24	3 - 1/2	29	18
30	3 - 1/2	36	23
36	4	44	27
42	4 - 1/2	51	31
48	5	58	36
54	5 - 1/2	65	40
60	6	73	45
72	7	88	54



SIZE	LENGTH	JT	E
15	8'-0"	2	46 - 3/8
18	8'-0"	2 - 1/4	46 - 3/8
24	8'-0"	2 - 3/4	46 - 3/8
30	8'-0"	3 - 1/4	46 - 3/8
36	8'-0"	3 - 3/4	46 - 3/8
42	8'-0"	4	46 - 3/8
48	8'-0"	4 - 1/4	46 - 3/8
54	8'-0"	4 - 1/2	46 - 3/8
60	8'-0"	5	46 - 3/8
72	8'-0"	6	46 - 3/8

PER ASTM C506

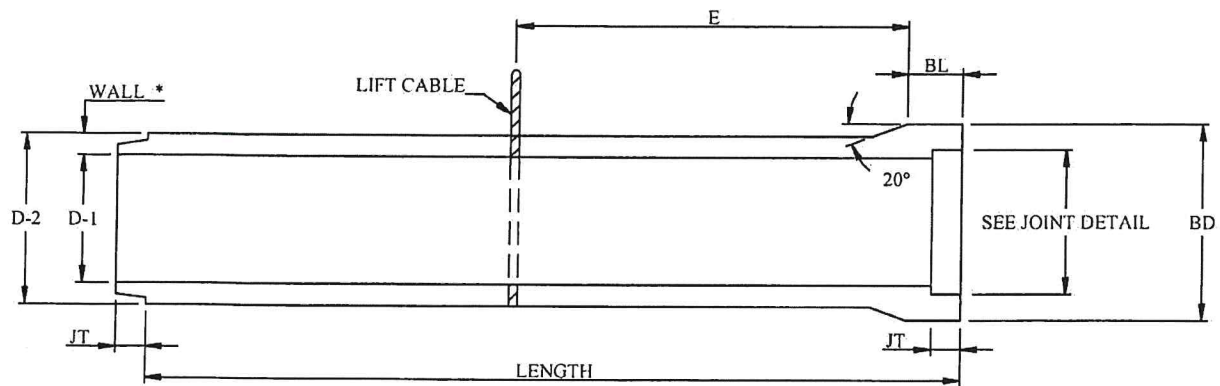
15" - 72" DIA. RCPA



SECTION AT PIPE JOINT

SIZE	JT	G1	G2	G3	T1	T2	T3	AS
18 x 11	2.25	1	.125	1.875	1.125	.125	1.75	.28
22 x 13	2.25	1	.125	1.875	1.125	.125	1.75	.28
29 x 18	2.75	1.375	.375	2.125	1.625	.375	1.875	.27
36 x 23	3	1.594	.262	1.644	1.313	.262	1.925	.28
44 x 27	3.5	1.719	.306	1.975	1.438	.306	2.256	.28
51 x 31	3.5	1.906	.306	2.288	1.625	.306	2.569	.28
58 x 36	3.5	2.281	.306	2.413	2	.306	2.694	.28
65 x 40	5	2.625	.437	2.438	2.313	.437	2.750	.31
73 x 45	5	2.938	.437	2.625	2.375	.437	3.188	.56
88 x 54	6	3.188	.525	3.287	2.625	.525	3.850	.56

JOINT DETAIL FOR 15" - 72" REINFORCED CONCRETE ARCH PIPE

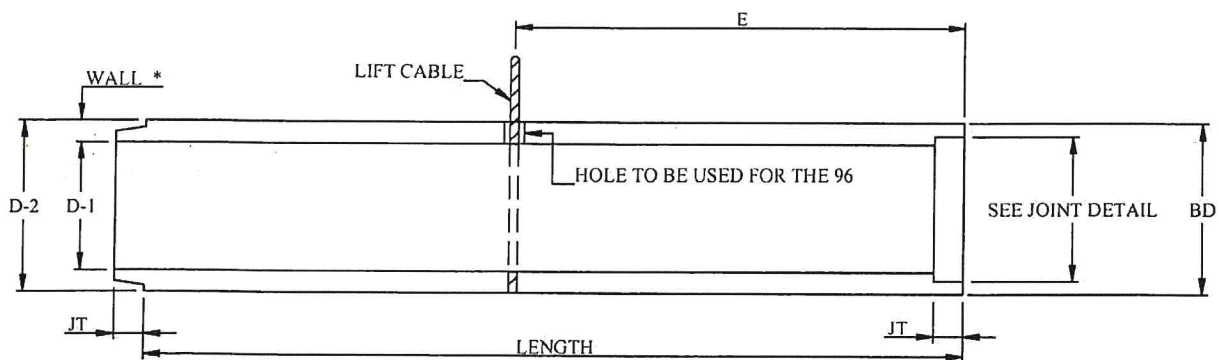


* WALL THICKNESS VARIES FROM END TO END DUE TO TAPER IN FORM JACKET

SIZE	WALL *	LENGTH	JT	D-1	D-2	BD	BL	E
12	2 - 1/4	8'-0"	SEE JOINT DETAIL	12	16 - 1/2	20 - 1/8	5 - 1/8	46 - 1/2
15	2 - 1/4	8'-0"		15	19 - 1/2	23 - 1/8	6 - 1/2	46 - 1/2
18	2 - 1/2	8'-0"		18	23	26 - 5/8	6 - 1/2	46 - 3/8
24	3	8'-0"		24	30	32 - 5/8	7	47 - 3/8
30	3 - 1/2	8'-0"		30	37	39 - 1/2	7	47 - 5/8
36	4	8'-0"		36	44	45 - 5/8	7	48 - 1/4
42	4 - 1/2	8'-0"		42	51	52	7	48 - 11/16

B WALL CLASS III, IV & V PER ASTM C76

15" DIA. - 42" DIA. RCP

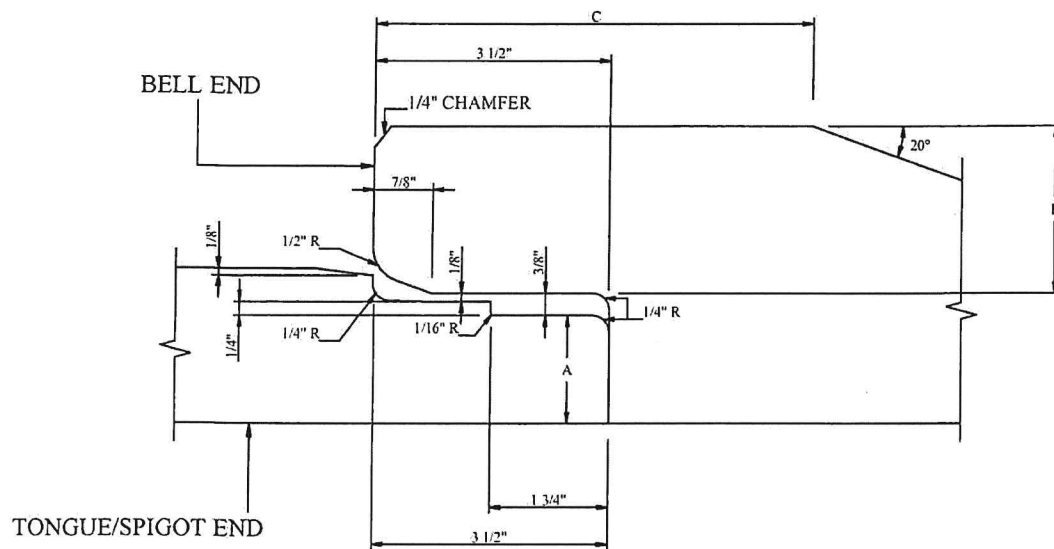


* WALL THICKNESS VARIES FROM END TO END DUE TO TAPER IN FORM JACKET

SIZE	WALL *	LENGTH	JT	D-1	D-2	BD	E
48	5	8'-0"	SEE JOINT DETAIL	48	58	58	49 - 1/8
54	5 - 1/2	8'-0"		54	65	65	47 - 1/4
60	6	8'-0"		60	72	72	47 - 1/2
72	7	8'-0"		72	86	86	48 - 7/8
96	9	6'-0"		96	114	114	36

B WALL CLASS III, IV & V PER ASTM C76

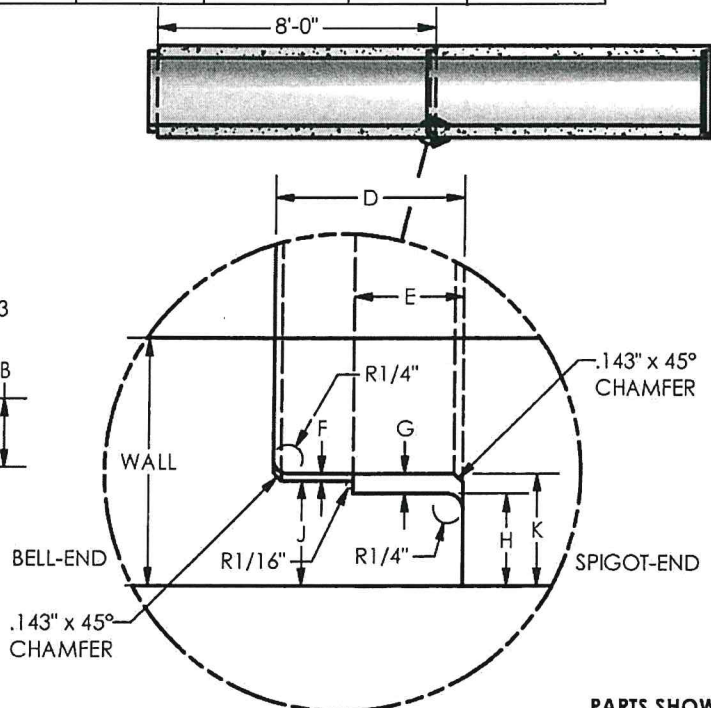
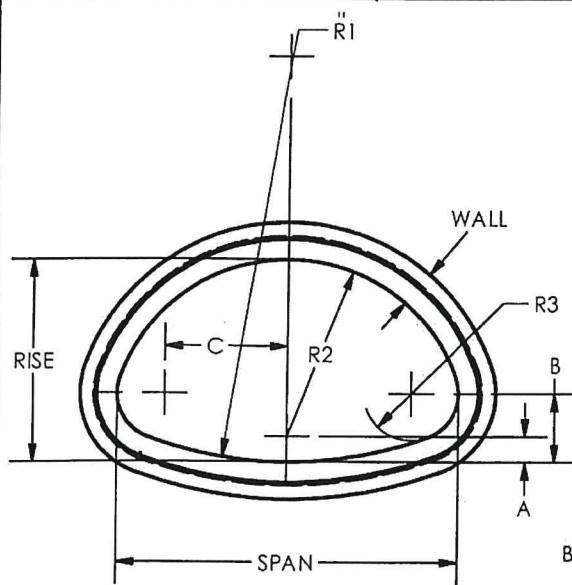
48" DIA. - 72", 96" DIA. RCP



SIZE	A	B	C
12	1.75	2.44	5.13
15	1.25	2.125	6.75
18	1.5	2.313	6.75

JOINT DETAIL FOR 12" - 18" REINFORCED CONCRETE PIPE

EQUIVØ	WALL	RISE	SPAN	R1	R2	R3	A	B	C
15"	3.250"	11.0000"	18.000"	22.8750"	10.6250"	4.041400"	0.3750"	4.68750"	4.03125"
18"	3.375"	13.5000"	22.000"	27.5000"	13.7500"	5.250000"	0.2500"	6.00000"	5.75000"
24"	3.750"	18.0000"	28.500"	40.6875"	14.5625"	4.593750"	3.4375"	5.90625"	9.65625"
30"	4.250"	22.5000"	36.250"	51.0000"	18.7500"	6.031250"	3.7500"	7.68750"	12.09375"
36"	4.750"	26.6250"	43.750"	62.0000"	22.5000"	6.375000"	4.1250"	8.56250"	15.50000"
42"	5.250"	31.3125"	51.125"	73.0000"	26.2500"	7.562500"	5.0625"	10.09375"	18.00000"
48"	5.750"	36.0000"	58.500"	84.0000"	30.0000"	8.750000"	6.0000"	11.59375"	20.50000"
54"	6.25"	40.0000"	65.000"	92.5000"	33.3750"	9.812500"	6.6250"	13.00000"	22.68750"
60"	6.75"	45.0000"	73.000"	105.0000"	37.5000"	11.21875"	7.5000"	14.68750"	25.28125"
72"	7.00"	54.0000"	88.000"	126.0000"	45.0000"	12.5625"	9.0000"	17.00000"	31.4375"
EQUIVØ	D	E	F	G	H	J	K	TONS	
15"	3.25"	1.875"	.126000"	0.32600"	1.00000"	1.314"	1.326"	0.80	
18"	3.25"	1.875"	0.12500"	0.34375"	1.25000"	1.564"	1.576"	0.96	
24"	3.25"	1.875"	0.12500"	0.34375"	1.50000"	1.814"	1.826"	1.36	
30"	3.25"	1.875"	0.12500"	0.34375"	1.59375"	1.912"	1.924"	1.93	
36"	3.25"	1.875"	0.12500"	0.34375"	1.71875"	2.037"	2.049"	2.56	
42"	3.75"	2.250"	0.15625"	0.43750"	1.90625"	2.350"	2.365"	3.34	
48"	3.75"	2.250"	0.15625"	0.43750"	2.15625"	2.600"	2.615"	4.13	
54"	4.25"	2.250"	0.14600"	0.44600"	2.30400"	2.752"	2.750"	4.92	
60"	4.25"	2.250"	0.14600"	0.44600"	2.60400"	3.052"	3.050"	5.92	
72"	4.25"	2.250"	0.14600"	0.44600"	2.60400"	3.052"	3.050"	7.30	



MATERIALS:
CONCRETE: 4,000 PSI, TYPE I/II CEMENT

NOTES:
AVAILABLE IN CLASS III AND IV

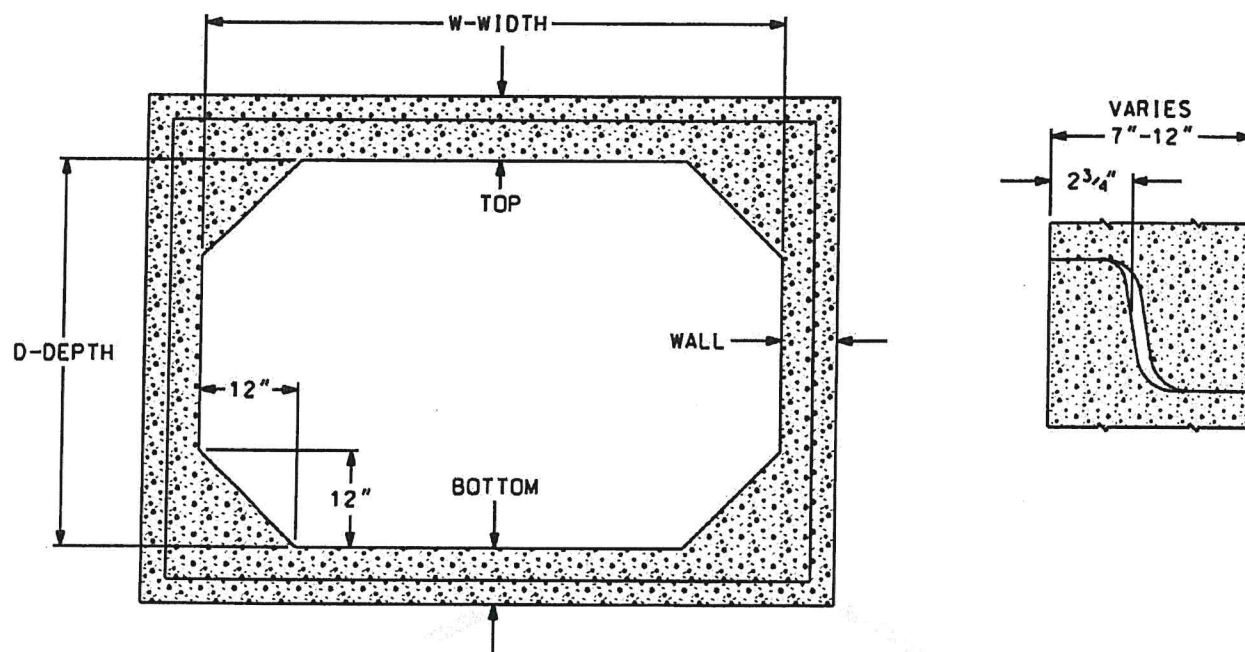
PARTS SHOWN:
30" ARCH RCP



REINFORCED CONCRETE PIPE

ARCH PIPE

3.9



SIZE WxD	TOP SLAB	BOTTOM & WALLS	WT./FT.	WT./ 6' SECT.	AREA (SQ.FT.)
6' x 3'	8"	7"	2.080	12.402	16
6' x 4'	8"	7"	2.254	13.524	22
6' x 5'	8"	7"	2.429	14.574	28
6' x 6'	8"	8"	2.604	15.624	34
7' x 7'	8"	8"	3.333	19.998	47
8' x 3'	8"	8"	2.739	16.434	22
8' x 3'	10"	10"	3.452	20.712	22
8' x 4'	8"	8"	2.960	17.760	30
8' x 5'	8"	8"	3.160	18.960	38
8' x 6'	8"	8"	3.360	20.160	46
8' x 7'	7"	7"	3.111	18.666	54
8' x 7'	8"	8"	3.560	21.360	54
8' x 8'	8"	8"	3.760	22.560	62
10' x 3'	10"	10"	3.950	23.700	28
10' x 4'	10"	10"	4.215	25.290	38
10' x 5'	10"	10"	4.465	26.790	48
10' x 6'	10"	10"	4.710	28.290	58
10' x 7'	10"	10"	4.965	29.790	68
10' x 8'	10"	10"	5.215	31.290	78
10' x 9'	10"	10"	5.465	32.790	88
10' x 10'	10"	10"	5.715	34.290	98
12' x 3'	12"	12"	5.400	32.400	34
12' x 4'	10"	10"	4.697	28.182	46
12' x 4'	12"	12"	5.700	34.200	46
12' x 5'	12"	12"	6.000	36.000	58

SIZE WxD	TOP SLAB	BOTTOM & WALLS	WT./FT.	WT./ 6' SECT.	AREA (SQ.FT.)
12' x 6'	12"	12"	6.300	37.800	70
12' x 7'	12"	12"	6.600	39.600	82
12' x 8'	12"	12"	6.900	41.400	94
12' x 9'	12"	12"	7.200	43.200	106
12' x 10'	12"	12"	7.500	45.000	118
12' x 12'	12"	12"	8.100	48.600	142
13' x 6'	12"	12"	6.600	39.600	76
14' x 6'	10"	10"	6.815	40.890	82
14' x 7'	12"	12"	7.200	43.200	96
14' x 11'	12"	12"	8.400	50.400	152
15' x 3'	12"	12"	6.300	37.800	43
15' x 5'	12"	12"	6.900	41.400	73
16' x 8'	12"	12"	8.100	48.600	126
16' x 11'	12"	12"	9.000	54.000	174
18' x 4'	12"	12"	7.500	45.000	70
18' x 6'	12"	12"	8.100	48.600	106
18' x 7'	12"	8"	8.400	50.400	124
18' x 8'	12"	12"	6.600	51.600	142
20' x 4'	12"	12"	8.100	48.600	78
20' x 5'	12"	12"	8.400	50.400	98
20' x 6'	12"	12"	8.700	52.200	118
20' x 6'	15"	15"	10.987	65.922	118
20' x 8'	12"	12"	9.300	55.800	158

GENERAL NOTES:

1. BOX CULVERT IS TYPICALLY DESIGNED PER ASTM C-1433 OR C-1577 BUT CAN BE DESIGNED TO MEET SPECIFIC PROJECT CONDITIONS.



HERMITAGE, TN LENOIR CITY, TN
FRANKLIN, TN CHATANOOGA, TN

PRECAST BOX CULVERTS (12" HAUNCH) 6' LENGTHS

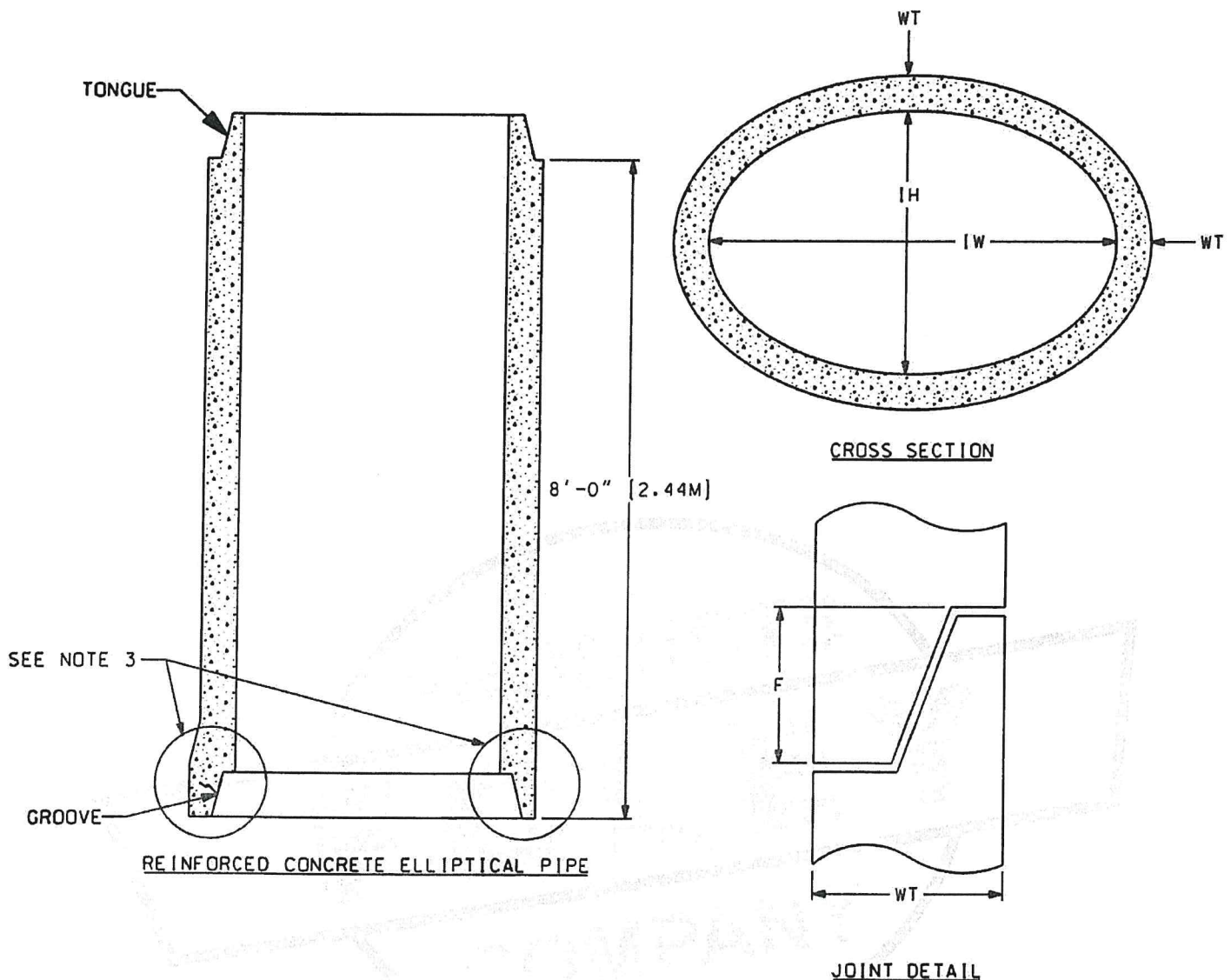
SCALE: NTS

PH# 1-800-737-0707

DWG# BX-102

DATE: 01/23/12

SHEET# 1 OF 1



REINFORCED ELLIPTICAL PIPE							
SIZE	23"x14"	30"x19"	38"x24"	45"x29"	53"x34"	60"x38"	76"x48"
EQUIV. ROUND	18"	24"	30"	36"	42"	48"	60"
SIZE (mm)	580x360	770x490	960x600	1150x730	1355x865	1520x970	1920x1225
WEIGHT/FT	240	350	440	680	880	1080	1600
WATERWAY AREA Sq.Ft.	1.8	3.3	5.1	7.4	10.2	12.9	20.5
WT	3	3.25	3.75	4.5	5.0	5.5	6.5
F	3.5	3.5	3.5	3.5	4.0	4.0	4.0

GENERAL NOTES:

1. REINFORCED ELLIPTICAL PIPE IS TYPICALLY MANUFACTURED TO CURRENT ASTM C-507 SPECIFICATIONS.
2. ELLIPTICAL PIPE CAN BE MANUFACTURED TO MEET SPECIFIC PROJECT CONDITIONS.
3. SIZES UP TO 45" X 29" WILL HAVE BELL END. LARGER WILL HAVE A STRAIGHT WALL JOINT CONFIGURATION.



HERMITAGE, TN LENOIR CITY, TN
FRANKLIN, TN CHATANOOGA, TN

ELLIPTICAL PIPE DETAIL (LOW HEAD)

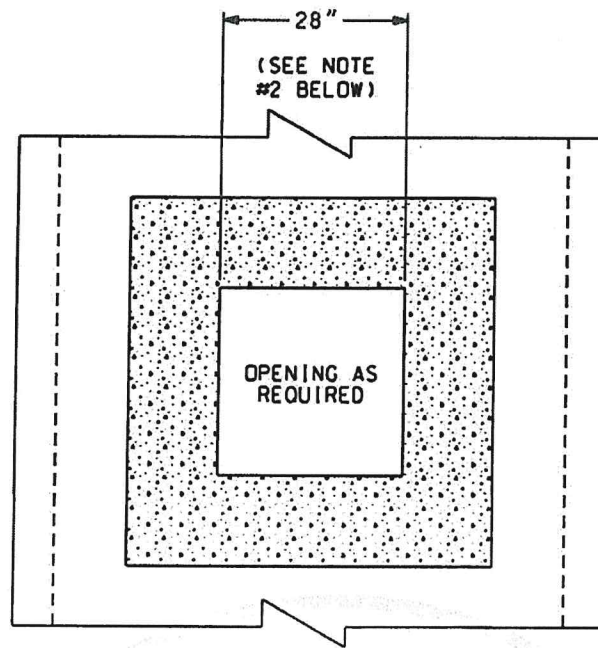
SCALE: NTS

PH# 1-800-737-0707

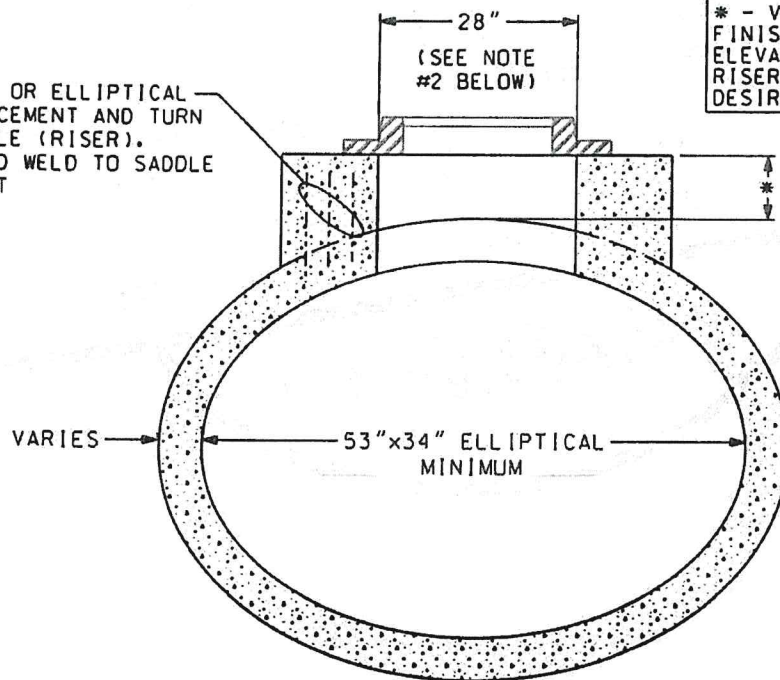
DWG# RCP-022

DATE: 01/28/12

SHEET# 1 OF 1



CUT CIRCULAR OR ELLIPTICAL
PIPE REINFORCEMENT AND TURN
UP INTO SADDLE (RISER).
REINFORCE AND WELD TO SADDLE
REINFORCEMENT



* - VARIES FROM 4" MINIMUM TO
FINISHED TOP OF CASTING
ELEVATION BY MEANS OF PRECAST
RISER SECTIONS STACKED TO
DESIRED HEIGHT.

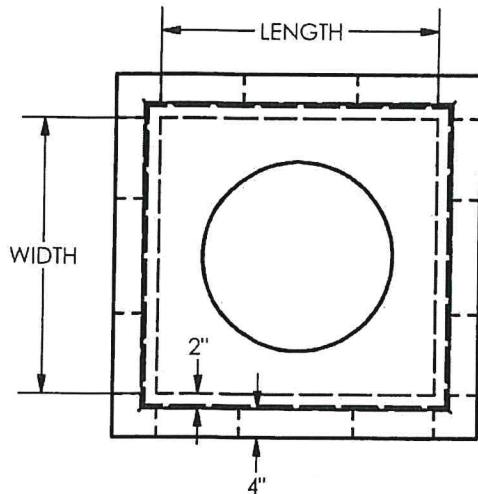
ELLIPTICAL PIPE OR ROUND PIPE

GENERAL NOTES:

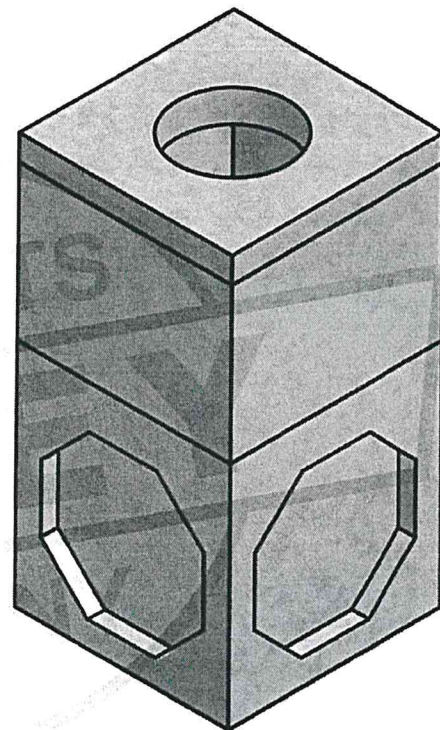
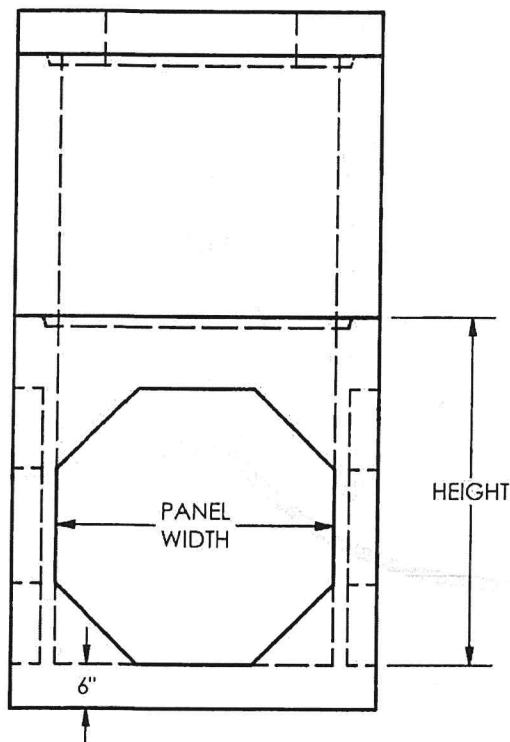
1. STACK-OUT (RISERS) ARE AVAILABLE IN A VARIETY OF SIZES AND SHAPES TO ACCOMMODATE STORM STRUCTURES (IN RECTANGULAR, SQUARE, OR ROUND) AND HYDRAULIC OPENING OF CASTING.
2. CHECK WITH SDCI REPRESENTATIVES FOR OTHER OPTIONS.



HERMITAGE, TN LENOIR CITY, TN
FRANKLIN, TN CHATANOOGA, TN



LENGTH	WIDTH	HEIGHT	PANEL WIDTH
3'-2"	3'-2"	4'-0"	38"
4'-3"	4'-3"	5'-0"	51"



MATERIALS:

CONCRETE: 4,000 PSI, TYPE I/II CEMENT

NOTES:

OPENING ON TOP AS REQUIRED
SEE 2.11 FOR STANDARD KNOCKOUT BOXES

PARTS SHOWN:

4'-2" x 4'-2" TOP
3'-2" x 3'-2" x 4'-0" RISER
3'-2" x 3'-2" x 4'-0" KNOCK-OUT BASE



DRAWING FOR BOX concept only.

Pre-cast CATCH BASIN, Type #1, #2, #3, #4

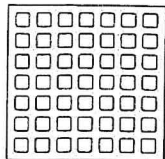
2.12

As per JP Spec - custom build -

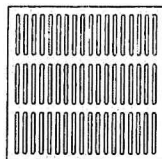
FRAMES AND GRATES

V-5700 FRAME & GRATE SERIES

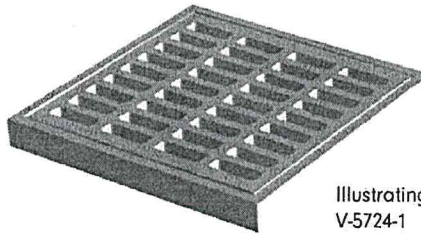
Heavy duty
ADA compliant grates available



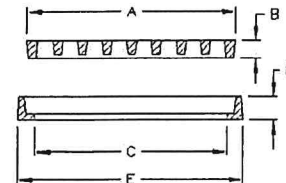
V-5724-2



V-5724-80**



Illustrating
V-5724-1



Frame Number	Grate Number	Cover Number	A Grate Size	B Grate Thk.	C Clear Opening	E Frame Size	F Frame Ht.	Open Area Sq. In.
SQUARE								
V-5708	V-5708	No Cover	9 3/8	1	7 3/4	11	1 1/2	33
V-5712	V-5712	V-6712	12	7/8	10 1/2	13 7/8	1 1/4	66
	V-5712**		12	7/8	10 1/2	13 7/8	1 1/4	43.33
V-5713	V-5713	V-6713	13 3/8	1 9/16	11 5/8	15 3/8	2 1/8	55
V-5714	V-5714	V-6714	14 1/2	1	13 1/4	16	1 9/16	76
No Frame	V-5715**	No cover	14 3/4	1 3/16				58
V-5716	V-5716	No cover	15 7/8	1 1/8	14 1/4	17 1/2	1 3/4	90
V-5718	V-5718	V-6718	18	1 1/2	16 3/8	19 1/2	2	152
V-5720	V-5720	V-6720	19 3/4	1 1/2	18 1/4	21 1/4	2	175
	V-5720**		19 3/4	1 1/2	18 1/4	21 1/4	2	105
V-5724	V-5724-1	V-6724	24	1 7/8	22 1/4	25 7/8	2 5/8	268
	V-5724-2		24	1 7/8	22 1/4	25 7/8	2 5/8	212
	V-5724-4*		24	1 7/8	22 1/4	25 7/8	2 5/8	336
	V-5724-80**		24	1 7/8	22 1/4	25 7/8	2 5/8	164
	V-4896 (beehive)		24	1 7/8	22 1/4	25 7/8	2 5/8	446
V-5724-1 (w/flange)			24	1 7/8	22 1/8	30	2 5/8	
V-5726-1	V-5726	V-6726	25 3/4	2	22 1/4	27 7/8	2 3/4	321
	V-5726*		25 3/4	2	22 1/4	27 7/8	2 3/4	321
	V-5726-80**		25 3/4	2	22 1/4	27 7/8	2 3/4	194
V-5728	V-5728	No cover	28	2	25 7/8	30 1/8	2 3/4	370
V-5732	V-5732	V-6732	31 7/8	2	30 1/4	33 3/4	2 3/4	490
	V-5732-80**		31 7/8	2	30 1/4	33 3/4	2 3/4	283
V-5736	V-5736	V-6736	38 1/4	2	36 1/2	40 3/8	2 3/4	652
	V-5736*		38 1/4	2	36 1/2	40 3/8	2 3/4	652
	V-5736-80**		38 1/4	2	36 1/2	40 3/8	2 3/4	356
V-5742	V-5742 (2P)	V-6642 (2P)	43 7/8	2	42 1/8	45 7/8	2 3/4	868
	V-5742* (2P)				42 1/8	45 7/8	2 3/4	
V-5748 (non-traffic) (steel angle frame)	V-5648 (2P)	V-6648	50 9/16	1 1/2	48	51 1/2		820
RECTANGULAR								
V-5751	V-5751	V-6751	13 7/8 x 25 7/8	1	12 x 24	15 5/16 x 27 3/8	1 1/2	158
V-5752	V-5752	No cover	18 x 23 3/4	1 3/8	16 1/4 x 22	19 3/8 x 25 1/8	2	188
V-5754	V-5754-1 (1" slots)	No cover	17 7/8 x 35 7/8	2	15 5/8 x 33 5/8	20 1/4 x 38 1/4	2 3/4	245
V-5760	V-5760	No cover	24 x 36	2	21 1/2 x 33 1/2	28 x 40 1/4	2 3/4	413
	7510 M3†		23 7/8 x 35 3/4	2	21 1/2 x 33 1/2	28 x 40 1/4	2 3/4	446
	7510 M4		23 7/8 x 35 3/4	2	21 1/2 x 33 1/2	28 x 40 1/4	2 3/4	324
	7510 M1 (DG)		23 5/8 x 35 5/8	2	21 1/2 x 33 1/2	28 x 40 1/4	2 3/4	410
V-5763	V-5763	No cover	25 7/8 x 31 7/8	1 3/4	24 5/8 x 30 3/8	27 7/8 x 33 7/8	2 3/8	402
V-5766	V-5666	V-6666	25 7/8 x 37 7/8	2	24 3/8 x 36 3/8	28 x 40	3	397
V-5770	V-5670 (2P)	V-6670 (2P)	37 3/4 x 49 3/4	1 1/2	36 x 48	39 3/4 x 51 3/4	2 1/4	708

** ADA Compliant Grate

* Ductile Iron Extra Heavy Duty Grate

† Vane Grate

(2P) 2 Piece (2 frames/2 covers/2 grates)

(DG) Diagonal Grate

(CG) Concave Grate

NOTE: All dimensions are in inches.



CERTIFICATE OF LIABILITY INSURANCE

DATE (MM/DD/YYYY)
9/25/2020

THIS CERTIFICATE IS ISSUED AS A MATTER OF INFORMATION ONLY AND CONFERS NO RIGHTS UPON THE CERTIFICATE HOLDER. THIS CERTIFICATE DOES NOT AFFIRMATIVELY OR NEGATIVELY AMEND, EXTEND OR ALTER THE COVERAGE AFFORDED BY THE POLICIES BELOW. THIS CERTIFICATE OF INSURANCE DOES NOT CONSTITUTE A CONTRACT BETWEEN THE ISSUING INSURER(S), AUTHORIZED REPRESENTATIVE OR PRODUCER, AND THE CERTIFICATE HOLDER.

IMPORTANT: If the certificate holder is an ADDITIONAL INSURED, the policy(ies) must be endorsed. If SUBROGATION IS WAIVED, subject to the terms and conditions of the policy, certain policies may require an endorsement. A statement on this certificate does not confer rights to the certificate holder in lieu of such endorsement(s).

PRODUCER E B Ducasse Insurance Agency, Inc 3200 Ridgelake Dr, Suite 401		CONTACT NAME: Darly Oser PHONE (A/C, No, Ext): (504) 840-9883 FAX (A/C, No): (504) 840-9889 E-MAIL ADDRESS: doser@ebducasse.com	
Metairie	LA	70002	INSURER(S) AFFORDING COVERAGE
INSURED CIMSCO INC 1840 L AND A ROAD			INSURER A: United Fire and Indemnity Co
METAIRIE			INSURER B: Technology Insurance Co
LA			INSURER C:
70001-6237			INSURER D:
			INSURER E:
			INSURER F:

COVERAGES

CERTIFICATE NUMBER: 20 - 21

REVISION NUMBER:

THIS IS TO CERTIFY THAT THE POLICIES OF INSURANCE LISTED BELOW HAVE BEEN ISSUED TO THE INSURED NAMED ABOVE FOR THE POLICY PERIOD INDICATED. NOTWITHSTANDING ANY REQUIREMENT, TERM OR CONDITION OF ANY CONTRACT OR OTHER DOCUMENT WITH RESPECT TO WHICH THIS CERTIFICATE MAY BE ISSUED OR MAY PERTAIN, THE INSURANCE AFFORDED BY THE POLICIES DESCRIBED HEREIN IS SUBJECT TO ALL THE TERMS, EXCLUSIONS AND CONDITIONS OF SUCH POLICIES. LIMITS SHOWN MAY HAVE BEEN REDUCED BY PAID CLAIMS.

INSR LTR	TYPE OF INSURANCE	ADDL INSD	SUBR WVD	POLICY NUMBER	POLICY EFF (MM/DD/YYYY)	POLICY EXP (MM/DD/YYYY)	LIMITS
A	<input checked="" type="checkbox"/> COMMERCIAL GENERAL LIABILITY			60418952	9/1/2020	9/1/2021	EACH OCCURRENCE \$ 1,000,000
	<input type="checkbox"/> CLAIMS-MADE <input checked="" type="checkbox"/> OCCUR		DAMAGE TO RENTED PREMISES (Ea occurrence) \$ 100,000				
			MED EXP (Any one person) \$ 5,000				
			PERSONAL & ADV INJURY \$ 1,000,000				
	GEN'L AGGREGATE LIMIT APPLIES PER:						GENERAL AGGREGATE \$ 2,000,000
	<input type="checkbox"/> POLICY <input type="checkbox"/> PROJECT <input type="checkbox"/> LOC						PRODUCTS - COMPO/OP AGG \$ 2,000,000
	OTHER:						\$
A	<input checked="" type="checkbox"/> AUTOMOBILE LIABILITY			60418952	9/1/2020	9/1/2021	COMBINED SINGLE LIMIT (Ea accident) \$ 1,000,000
	<input checked="" type="checkbox"/> ANY AUTO						BODILY INJURY (Per person) \$
	<input type="checkbox"/> ALL OWNED AUTOS	<input type="checkbox"/> SCHEDULED AUTOS					BODILY INJURY (Per accident) \$
	<input type="checkbox"/> HIRED AUTOS	<input type="checkbox"/> NON-OWNED AUTOS					PROPERTY DAMAGE (Per accident) \$
A	<input checked="" type="checkbox"/> UMBRELLA LIAB			60418952	9/1/2020	9/1/2021	EACH OCCURRENCE \$ 1,000,000
	<input type="checkbox"/> EXCESS LIAB	<input type="checkbox"/> CLAIMS-MADE					AGGREGATE \$ 1,000,000
	<input type="checkbox"/> DED	<input type="checkbox"/> RETENTION \$					\$
B	WORKERS COMPENSATION AND EMPLOYERS' LIABILITY			TWC3898818	9/1/2020	9/1/2021	<input checked="" type="checkbox"/> PER STATUTE <input type="checkbox"/> OTHER
	ANY PROPRIETOR/PARTNER/EXECUTIVE OFFICER/MEMBER EXCLUDED? (Mandatory in NH)	<input type="checkbox"/> Y <input type="checkbox"/> N	N/A				E.L. EACH ACCIDENT \$ 1,000,000
	If yes, describe under DESCRIPTION OF OPERATIONS below						E.L. DISEASE - EA EMPLOYEE \$ 1,000,000
							E.L. DISEASE - POLICY LIMIT \$ 1,000,000

DESCRIPTION OF OPERATIONS / LOCATIONS / VEHICLES (ACORD 101, Additional Remarks Schedule, may be attached if more space is required)

The Parish of Jefferson, its districts, departments & agencies under the direction of the Parish President & Parish Council are named as additional insured on the General Liability & Auto Liability policies when required by written contract. The general liability & workers comp insurers will have no right of recovery or subrogation against the Parish of Jefferson, its Districts, Departments & agencies under the direction of the Parish President and Parish Council, it being the intention of the parties that the General liability and Workers Compensation policies described above shall protect both parties & be primary coverage for any & all losses covered by the described insurance.

CERTIFICATE HOLDER**CANCELLATION**

Jefferson Parish Purchasing Department
P O Box 9
Gretna, LA 70054-0009

SHOULD ANY OF THE ABOVE DESCRIBED POLICIES BE CANCELLED BEFORE THE EXPIRATION DATE THEREOF, NOTICE WILL BE DELIVERED IN ACCORDANCE WITH THE POLICY PROVISIONS.

AUTHORIZED REPRESENTATIVE

E Ducasse Sr./WAYNE

Edward B. Ducasse Sr.

© 1988-2014 ACORD CORPORATION. All rights reserved.

COMMENTS/REMARKS

Bid JP# 5000132095

OFREMARK

COPYRIGHT 2000, AMS SERVICES INC.