

4/28/2020

NO.: 50-00130298

Page: 5

BID FORM
Non Public Works

All Public Work Projects are required to use the Louisiana Uniform Public Work Bid Form

All prices must be held firm unless an escalation provision is requested in this bid. Jefferson Parish will allow one escalation during the term of the contract, which may not exceed the U.S. Bureau of Labor Statistics National Index for all Urban Consumers, unadjusted 12 month figure. The most recently published figure issued at the time an adjustment is requested will be used. A request must be made in writing by the vendor, and the escalation will only be applied to purchases made after the request is made.

Are you requesting an escalation provision?

YES _____ NO _____

MAXIMUM ESCALATION PERCENTAGE REQUESTED _____%

INITIAL BID PRICES WILL REMAIN FIRM THROUGH THE DATE OF Sept 30, 2020

For the purposes of comparison of bids when an escalation provision is requested, Jefferson Parish will apply the maximum escalation percentage quoted by the bidder to the period to which it is applied in the bid. The initial price and the escalation will be used to calculate the total bid price. It will be assumed, for comparison of prices only, that an equal amount of material or labor is purchased each month throughout the entire contract.

DELIVERY: FOB JEFFERSON PARISH

INDICATE DELIVERY DATE ON EQUIPMENT AND SUPPLIES

8-10 WEEKS ARO

LOUISIANA CONTRACTOR'S LICENSE NO.: (if applicable) N/A

THIS SECTION MUST BE COMPLETED BY BIDDER:

FIRM NAME: WASTECORP Pumps LLC

ADDRESS: P.O. Box 70

CITY, STATE: GRAND ISLAND, NY

ZIP: 14072

TELEPHONE: (888) 829-2783

FAX: (888) 883-3320

EMAIL ADDRESS: info@wastecorp.com / tenders@wastecorp.com

In the event that addenda are issued with this bid, bidders MUST acknowledge all addenda on the bid form. Bidder must acknowledge receipt of an addendum on the bid form as indicated. Failure to acknowledge any addendum on the bid form will result in bid rejection.

Acknowledge Receipt of Addenda: NUMBER: N/A
NUMBER: _____
NUMBER: _____
NUMBER: _____

TOTAL PRICE OF ALL BID ITEMS: \$ _____

AUTHORIZED
SIGNATURE: M. Domingos

TITLE: PROJECT MANAGER

MAGGIE DOMINGOS

Printed Name

SIGNING INDICATES YOU HAVE READ AND COMPLY WITH THE INSTRUCTIONS AND CONDITIONS.

NOTE: All bids should be returned with the BID NUMBER and BID OPENING DATE indicated on the outside of the envelope submitted to the Purchasing Department.

DATE: 4/28/2020

Page 6

INVITATION TO BID FROM JEFFERSON PARISH - continued

BID NO.: 50-00130298

SEALED BID

ITEM NUMBER	QUANTITY	U/M	DESCRIPTION OF ARTICLES	UNIT PRICE QUOTED	TOTALS
1	2.00	EA	<p>ONE TIME PURCHASE:</p> <p>0001 - Trash Pump, 6 inch self priming, trailer mount with DOT trailer lights package, driven by an Isuzu model 4LE2T, tier 4 diesel engine, passes 3 inch solids</p> <p>Part no. 6HT-DIST-4LE2T</p> <p>Please Note: One pump is for Eastbank Sewerage Lines Division.</p> <p>One pump is for Westbank Sewerage Lines Division.</p> <p>As per attached specifications</p>	\$45,200 ⁰⁰	\$90,400 ⁰⁰

CORPORATE RESOLUTION

EXCERPT FROM MINUTES OF MEETING OF THE BOARD OF DIRECTORS OF
WASTECORP PUMPS LLC
INCORPORATED.

AT THE MEETING OF DIRECTORS OF WASTECORP PUMPS
INCORPORATED, DULY NOTICED AND HELD ON MAY 11, 2020,
A QUORUM BEING THERE PRESENT, ON MOTION DULY MADE AND SECONDED. IT
WAS:

RESOLVED THAT MAGGIE DOMINGOS, BE AND IS HEREBY
APPOINTED, CONSTITUTED AND DESIGNATED AS AGENT AND ATTORNEY-IN-
FACT OF THE CORPORATION WITH FULL POWER AND AUTHORITY TO ACT ON
BEHALF OF THIS CORPORATION IN ALL NEGOTIATIONS, BIDDING, CONCERNS
AND TRANSACTIONS WITH THE PARISH OF JEFFERSON OR ANY OF ITS AGENCIES,
DEPARTMENTS, EMPLOYEES OR AGENTS, INCLUDING BUT NOT LIMITED TO, THE
EXECUTION OF ALL BIDS, PAPERS, DOCUMENTS, AFFIDAVITS, BONDS, SURETIES,
CONTRACTS AND ACTS AND TO RECEIVE ALL PURCHASE ORDERS AND NOTICES
ISSUED PURSUANT TO THE PROVISIONS OF ANY SUCH BID OR CONTRACT, THIS
CORPORATION HEREBY RATIFYING, APPROVING, CONFIRMING, AND ACCEPTING
EACH AND EVERY SUCH ACT PERFORMED BY SAID AGENT AND ATTORNEY-IN-
FACT.

I HEREBY CERTIFY THE FOREGOING TO BE
A TRUE AND CORRECT COPY OF AN
EXCERPT OF THE MINUTES OF THE ABOVE
DATED MEETING OF THE BOARD OF
DIRECTORS OF SAID CORPORATION, AND
THE SAME HAS NOT BEEN REVOKED OR
RESCINDED.



SECRETARY-TREASURER

MAY 11, 2020

DATE

UNABLE TO NOTARIZE
DUE TO COVID-19.
IF SUCCESSFULL, WE WILL
SUPPLY ORIGINAL
NOTARIZED .

Non-Public Works Bid

AFFIDAVIT

STATE OF _____

PARISH/COUNTY OF _____

BEFORE ME, the undersigned authority, personally came and appeared: _____

_____, (Affiant) who after being by me duly sworn, deposed and said that
he/she is the fully authorized _____ of WASTECORP PUMPS (Entity),
the party who submitted a bid in response to Bid Number 5D-00130298, to the Parish of
Jefferson.

Affiant further said:

Campaign Contribution Disclosures

(Choose A or B, if option A is indicated please include the required
attachment):

Choice A _____ Attached hereto is a list of all campaign contributions, including
the date and amount of each contribution, made to current or
former elected officials of the Parish of Jefferson by Entity,
Affiant, and/or officers, directors and owners, including
employees, owning 25% or more of the Entity during the two-year
period immediately preceding the date of this affidavit or the
current term of the elected official, whichever is greater. Further,
Entity, Affiant, and/or Entity Owners have not made any
contributions to or in support of current or former members of the
Jefferson Parish Council or the Jefferson Parish President through
or in the name of another person or legal entity, either directly or
indirectly.

Choice B ✓ there are NO campaign contributions made which would require
disclosure under Choice A of this section.

Debt Disclosures

(Choose A or B, if option A is indicated please include the required attachment):

Choice A Attached hereto is a list of all debts owed by the affiant to any elected or appointed official of the Parish of Jefferson, and any and all debts owed by any elected or appointed official of the Parish to the Affiant.

Choice B ✓ There are NO debts which would require disclosure under Choice A of this section.

Affiant further said:

That Affiant has employed no person, corporation, firm, association, or other organization, either directly or indirectly, to secure the public contract under which he received payment, other than persons regularly employed by the Affiant whose services in connection with the construction, alteration or demolition of the public building or project or in securing the public contract were in the regular course of their duties for Affiant; and

[The remainder of this page is intentionally left blank.]

That no part of the contract price received by Affiant was paid or will be paid to any person, corporation, firm, association, or other organization for soliciting the contract, other than the payment of their normal compensation to persons regularly employed by the Affiant whose services in connection with the construction, alteration or demolition of the public building or project were in the regular course of their duties for Affiant.

Signature of Affiant

Printed Name of Affiant

SWORN AND SUBSCRIBED TO BEFORE ME

ON THE _____ DAY OF _____, 20 ____.

Notary Public

Printed Name of Notary

Notary/Bar Roll Number

My commission expires _____.



PAYMENT REMITTANCE ADDRESS:

WASTECORP PUMPS LLC.
P.O. BOX 536463
PITTSBURGH, PA 15253-5906
Toll-Free Ph:1-888-829-2783
Toll-Free Fax:1-888-883-3320

QUOTATION

Page 1 of 2
<u>QUOTE DATE</u> May 11, 2020
<u>QUOTE NUMBER</u> QT215542
<u>QUOTED BY</u> ADMIN

VISIT OUR WEBSITE: WWW.WASTECORP.COM

QUOTATION TO:

JEFFERSON PARISH
PURCHASING DEPT.
200 DERBIGNY STREET
SUITE 4400
GENERAL GOV'T BLDG
GRETN, LA 70053
US
PH: 504-364-2678
Email: dreamey@jeffparish.net

SHIP VIA			TERMS	CUST NO.	FOB	REFERENCE		OPPT NO.
PPADD			CIA	CRM999999999	BUFFALO, NY	BID 50-130298		23339
QTY. ORD.	UOM	PART NO.	SALE DESCRIPTION			LEAD TIME	UNIT PRICE INCL. DISC.	EXT. PRICE INCL. DISC.
2	EA	63384-15	WASTECORP TRASH-FLOW PUMP TFCC-6M-DT, 74HP TIER 4, FINAL * DOT Highway Approved Trailer, Single Axle,				45,200.00	90,400.00
			Removable Lifting Bail, 80USG Fuel Tank					
			* Wastecorp Trash-Flow TFCC-6 - 6" Self Priming Centrifugal Pump					
			* Pump shall be capable of 1300 GPM @ 1800 RPM					
			* 6" MNPT Fitting, Suction Side					
			* 6" 90 Elbow MNPT Fitting, Discharge					
			* 6" FNPT Strainer Included					
			* Hatz 4H50TIC 74HP Tier 4 Final Diesel Engine					
			* Murphy TEC-10 Engine Control Panel					
			* Freight Charges Included, FOB Jefferson Parish					
		FRGHT1	FREIGHT CHARGES INCLUDED					0.00
		DOCUME	STD WARRANTY - 1 YEAR FROM DATE OF SHIPMENT					0.00
		DOCUME	(1) COMPLETE SET OF O&M MANUALS					0.00
COMMENTS: PURCHASE OF TWO (2) TRASH PUMPS, 6" SELF-PRIMING, TRAILER MOUNTED FOR JEFFERSON PARISH SEWERAGE DI						SUBTOTAL INC DISC		90,400.00
						TOTAL SALES TAX		0.00
						TOTAL QUOTE USD		\$90,400.00*
						<i>*Plus applicable freight</i>		

THIS QUOTATION IS NOT TO BE DISSEMINATED WITHOUT PRIOR WRITTEN CONSENT FROM WASTECORP PUMPS.
QUOTE IS VALID FOR 30 DAYS. MIN. ORDER OF \$100 SHALL APPLY, OR A SUR-CHARGE WILL BE ADDED. ALL SHIPPING & HANDLING CHARGES ARE EXTRA. LEAD TIMES QUOTED, ARE BASED AT TIME OF QUOTATION AND SUBJECT TO PRIOR SALE.

RETURNS: WASTECORP WILL NOT ACCEPT ANY PRODUCT(S) FOR RETURN UNLESS PRIOR WRITTEN PERMISSION BY WASTECORP HAS OBTAINED BY MEANS OF AN EXECUTED RETURN GOODS AUTHORIZATION FORM. THE RGA NUMBER MUST BE LISTED ON THE PACKING PRODUCTS SO RETURNED WILL BE SUBJECT TO A 40% CHARGE FOR RESTOCKING AND REHANDLING. ALL PRODUCT(S) RETURNED MUST HAVE TRANSPORTATION CHARGES PREPAID BY THE SHIPPER. PRODUCT(S) WHICH ARE OBSOLETE OR MADE TO SPECIAL ORDER I.E., FARE NOT RETURNABLE NOR REFUNDABLE. NO ALLOWANCE WILL BE MADE FOR LABOUR, INSTALLATION, REMOVAL, TRANSPORTATION OTHER CHARGES INCURRED BY PURCHASER IN CONNECTION WITH THE RETURN OF GOODS.

TERMS & CONDITIONS OF SALE: "GENERAL TERMS & CONDITIONS OF SALE" APPLY TO ALL TRANSACTIONS.



ABRIDGED (SHORT-FORM) TERMS & CONDITIONS OF SALE

ALL PURCHASE ORDERS ACCEPTED ARE SUBJECT TO WASTECORP'S STANDARD TERMS & CONDITIONS OF SALES, WHICH ARE AVAILABLE FOR REVIEW UPON REQUEST. ABRIDGED TERMS & CONDITIONS OF SALE ARE NOTED BELOW.

PRICES: Prices apply to the specific quotation, and does not include any taxes, transportation charges, special packaging or stamping, unless otherwise noted. Prices quoted are subject to change without prior notice. Prices quoted in US dollars unless otherwise stated.

TAXES: Purchaser agrees to pay the amount of any Federal, State, County, City or other tax which may apply to this order, directly to the governing Federal, State, County, City tax department.

PROPOSAL VALIDITY: This quotation shall be firm for a period of thirty (30) days from the date of this quotation.

PAYMENT TERMS: Payment terms are cash-in-advance for all first-time orders, unless established credit terms or other arrangements made between Wastecorp and purchaser, contact us for available payment options. We accept payment by acceptable credit cards VISA, MasterCard, Amex, or Discover for US customers only. Past due accounts are considered after thirty (30) days of unpaid invoice date and may be subject to interest charged at 1.5% per month.

LEAD TIME: Lead times commence upon acceptance of purchase order and payment terms are satisfied. Lead times are based on current availability of parts/pumps and subject to prior sale. Quoted lead times are based on the best availability information as at the date of the quotation. Inventory, factory loading and design backlog are all subject to change. Lead time and/or drawing times for critical items should be verified at the time of purchase order issuance. If any condition arises which prevents compliance with delivery schedules, Wastecorp shall not be liable for damages general, consequential or otherwise for failure to meet the original delivery schedule provided.

SHIPPING/DELIVERY: Pumps are skidded and packaged for transportation in closed top dock-level trucks. NO ALLOWANCE WILL BE MADE FOR LABOR, INSTALLATION, REMOVAL, UNLOADING OR OTHER CHARGES INCURRED BY PURCHASER IN CONNECTION WITH DELIVERY OF GOC. All shipments are made FOB the factory, unless otherwise specified. Full risk of loss (including, but not limited to, transportation/carrier delays and losses) shall pass to the Purchaser upon delivery of the products to the carrier at the FOB point. If there is a LOSS or APPARENT VISIBLE DAMAGE to a shipment during delivery, the RECEIVER MUST NOTE SUCH DAMAGE ON THE DELIVERY RECEIPT AND HAVE THE CARRIER'S DRIVER SIGN THE BILL OF LADING. Failure to do so will result in a null and void loss claim.

PRODUCT REVISIONS: Wastecorp reserves the right to discontinue, change or improve its products or any portions thereof. Accordingly, Wastecorp shall not be required to change or improve any products sold and/or shipped prior to such a change or improvement.

PURCHASE ORDERS: All customer purchase orders must be submitted

RETURN GOODS POLICY: Wastecorp will not accept any product(s) for return unless prior written permission by Wastecorp has been obtained by means of an executed **Return Goods Authorization** form. The RGA number must be listed on the packing list. Product(s) so returned will be subject to a 40% charge for restocking and re-handling. All product(s) returned must have transportation charges PREPAID by the Shipper. Product(s) which are obsolete or made to special order i.e., pumps are not returnable nor refundable. NO ALLOWANCE WILL BE MADE FOR LABOR, INSTALLATION, REMOVAL, TRANSPORTATION OR OTHER CHARGES INCURRED BY PURCHASER IN CONNECTION WITH THE RETURN OF GOODS.

CANCELLATION: Seller's acceptance of order cancellation or order reduction requests is conditional upon receiving Purchaser's written notification to assume any, or any part of, termination charges as agreed to by the Seller. Custom pumps and products are not returnable.

WARRANTY: Wastecorp warrants for a period of one (1) year from the date of installation or eighteen (18) months from date of shipment, whichever comes first (the "Warranty Period") that the pump and accessories manufactured and sold hereunder shall be free from defects in material and workmanship. Wastecorp does not warrant engines, motors, gauges, electrical control equipment or other product(s) not manufactured by Wastecorp, such being subject to such warranties as may be given by their respective manufacturers. Wear and tear resulting from use and, or long-term storage, and items normally consumed in use are not covered by this Warranty Period. Wastecorp's obligation under this warranty is limited to repair or replacement at its factory of any part(s) subject to this warranty, which will be returned to Wastecorp with transportation charges prepaid, and which Wastecorp's examination shall disclose to its satisfaction to have been defective. Parts of the product(s) repaired or replaced under this warranty will be covered for the Warranty Period only and will be shipped to the Purchaser FOB Wastecorp's factory. NO ALLOWANCE WILL BE MADE FOR LABOR, INSTALLATION, REMOVAL, TRANSPORTATION OR OTHER CHARGES INCURRED BY PURCHASER IN CONNECTION WITH WARRANTY REPAIR OR REPLACEMENT.

LIMITATION OF WARRANTY: THE PROVISIONS OF WARRANTY NOTED ABOVE ARE WASTECORP'S SOLE WARRANTY. SELLER MAKES NO OTHER WARRANTY OF ANY KIND, EXPRESSED OR IMPLIED, AND ALL IMPLIED WARRANTIES OF MERCHANTABILITY AND FITNESS FOR A PARTICULAR PURPOSE WHICH EXCEED SELLER'S AFORESTATED OBLIGATION ARE HEREBY DISCLAIMED BY SELLER AND EXCLUDED FROM THIS WARRANTY. Seller neither assumes nor authorizes any person(s) to assume for it any other obligation in connection with the sale of the Product(s). This warranty shall not apply to any product(s) or parts of the product(s) which a) have been repaired or altered outside of Seller's factory in any manner; or b) have been subject to misuse, negligence or accident, or c) have been used in a manner contrary to Seller's instructions.

SELLER'S LIABILITY: Wastecorp will not be liable for any loss, damage, cost of repair, direct incidental or consequential damages of any kind, whether based upon warranty, contract, tort including negligence or strict liability arising in connection with the sale, use or repair of the Product(s). Seller's maximum liability shall not in any case exceed the contract price

BY ACCEPTING THE ORDER CONFIRMATION ATTACHED, THE PURCHASER IS ACCEPTING OF THE ORDER AND IS IN AGREEMENT WITH THE TERMS AND CONDITIONS OF SALE NOTED ABOVE, AND IN WASTECORP'S STANDARD TERMS & CONDITIONS OF SALES, AND IS HEREBY GIVING WASTECORP PERMISSION TO PROCEED WITH THE PRODUCTION OF THE

TRASH FLOW®

ENGINE DRIVEN TRASH PUMPS

TFCC-6M™

FEATURES

TRANSFER UP TO
1600 GPM

MAX. HEAD 56 psi (130ft
/39m)

HEAVY DUTY BEARINGS
AND CASTINGS

EASILY REMOVABLE
ROTATING ASSEMBLY

VACUUM PRIME ASSIST
AVAILABLE*

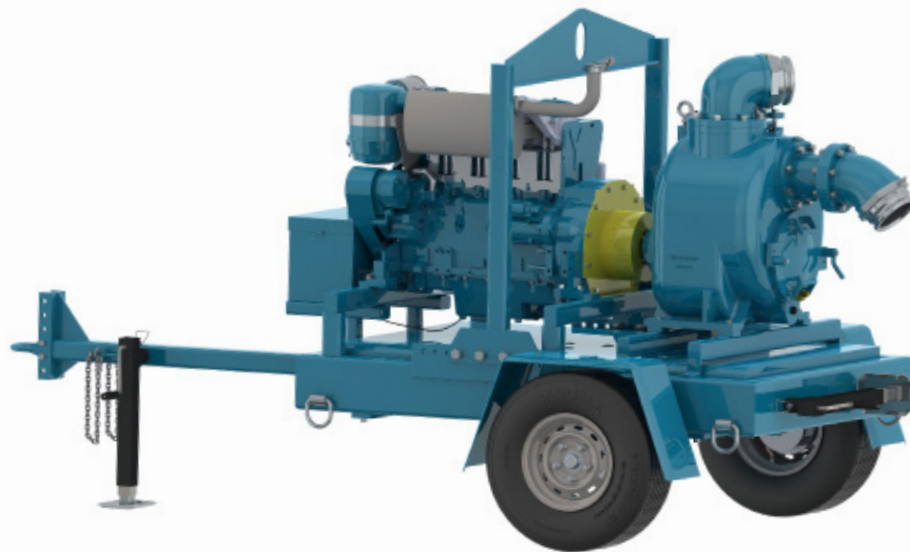
"SILENT" PUMPING
MODEL AVAILABLE*

QUICK SELF PRIMING
CAPABILITIES

DOUBLE FLOATING
MECHANICAL SEAL

DUAL LIP SEAL BEARING
PROTECTION

*optional

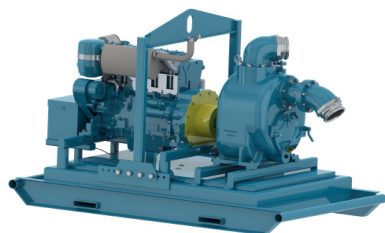


INTRODUCING THE NEW TRASH FLOW TFCC-6M™

ALL THE PUMPING POWER. ALL THE DURABILITY.

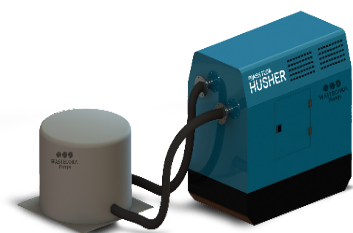
Only one 6" trash pump is miles ahead of the others. The Trash Flow TFCC-6ME is available in skid mounted or trailer mounted units with up to 1600 GPM capabilities. You can also select silent pumping systems with our specialized Husher™ acoustical hut model.

TRASH FLOW® TFCC-6M - OPTIONAL CONFIGURATIONS



With or Without Wheels The TFCC-6M Moves Wastewater

The TFCC-6M is available as a skid mounted model complete with a heavy duty lifting bail to move around your job site. With a wide variety of diesel engine and control panel options available, you'll get exactly what you need for your job.



Pumping in Residential Areas? The Trash Flow Can Quiet Down

One of the challenges when using a trash pump in residential areas is adhering to local noise regulations. Wastecorp's solution is the Trash Flow Husher with an acoustical hut to keep sound below 70 dBA.



Intermittent Flow a Problem? "Vacuum Prime Assist" is The Solution

Vacuum prime assist is ideal when pumping fluid with large volumes of air or pulling through long suction lines. It is also environmentally friendly as there is no carryover of liquid into the environment because of the unique float box design.

TRASH FLOW®

ENGINE DRIVEN TRASH PUMPS

TFCC-6M™



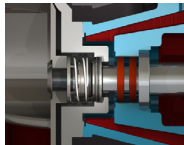
WASTECORP
Pumps®

FEATURES



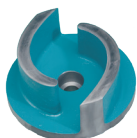
REMOVABLE ROTATING ASSEMBLY

Experience less downtime and maintenance hassles with the Trash Flow's removable rotating assembly. The pump volute and piping are not disturbed during maintenance.



DOUBLE FLOATING MECHANICAL SEAL

Wastecorp's mechanical seals are designed for the harsh pumping conditions in today's municipal and industrial solids handling jobs.



SOLIDS HANDLING IMPELLERS

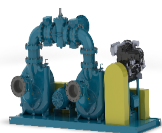
Trash Flow pumps feature our standard premium two-vane solids handling impellers with solids handling capabilities up to 3" (75mm).



OPTIONAL SUCTION AND DISCHARGE GAUGES

Monitor operating pressure easily with Wastecorp's optional suction and discharge gauges.

OPTIONAL CONFIGURATIONS



SEWAGE LIFT STATIONS

Let our pump designers engineer the ultimate lift station for your facility. We offer complete packaged solutions including control panels, valves and more.



SOUND-ATTENUATED ENCLOSURES

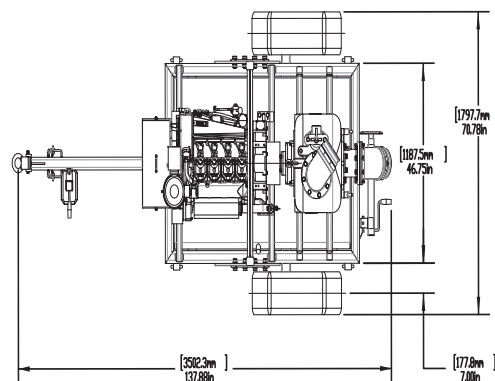
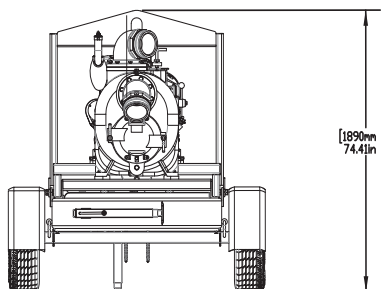
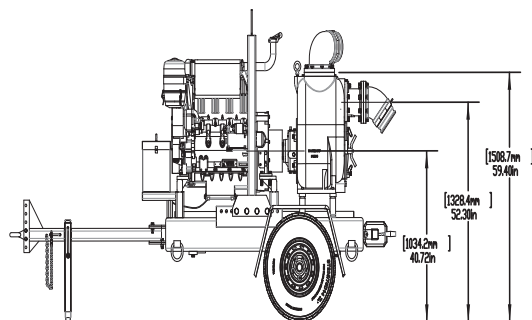
When your application calls for an enclosure to reduce noise or provide added security, Wastecorp's Husher® models provide noise reduction below 70 dBA and lockable doors.

Model	Trash Flow® TFCC-6M
Connection Size	6" x 6" (152mm x 152mm)] ANSI/DIN
Max. GPM	1600 GPM
Max. Suction Lift	25 ft (7.52m)
Max. Discharge Head	56 psi (130ft /39m)
Max. Liquid Temp.	160°F (71°C)
Pump Casing	Grey Iron, ASTM A48; Class 30
Operating Pressure	Maximum 120 psi (797 kPa)
Impeller	Max. 12.38" OD, Ductile Iron ASTM A536, Grade 60-40-18 (Impeller Trimming: If required) Semi-Open Type, Two-Vane Impeller, (two plane, computer dynamically balanced)
Max. Solids Handling	3" (76 mm)
Impeller Shaft	ANSI 4140 steel
Replaceable Wear Plate	SAE 1020 steel
Removable Cover Plate	Grey Iron, ASTM A48; Class 30
Flapper Valve	Neoprene with internal steel weight
Bearing Housing	Grey Iron, ASTM A48; Class 30 (includes oil sight glass and breather valve)
Seal Plate	Grey Iron, ASTM A48; Class 30
Shaft Sleeve	316 Stainless Steel
Radial/Thrust Bearing	NSK Open Ball
Bearing/Seal Cavity Lubrication	SAE No. 30 Non-Detergent Oil
Gaskets	Buna-N, Compressed Synthetic Fibers, PTFE, Vegetable Fiber, Cork and Rubber
Hardware	Standard Plated Steel, Brass Pressure Relief Valve, Bearing and Seal Cavity Oil Level Sight Gauges
Mechanical Seal	Double floating cartridge type, titanium tungsten-carbide rotating and stationary faces, 316SS casing and spring, Viton O-Rings.

Engine and Trailer Information

Trailer	Single Axle DOT compliant with e-brakes, fenders, lighting, swivel jack, ball hitch or pintle eye coupler
Coupling	SAE Rubber Disk Drive fly-wheel coupling
Engine & Control Panel	75 HP Deutz T3.6, Tier 4 Final diesel engine
Fuel Tank	DOT Compliant 100 USG (378 L) complete with fuel lines and mounting brackets

Note: Consult factory for applications exceeding maximum pressure and/or temperature indicated.



All information is approximate and is intended for general guidance only. Wastecorp Pumps reserves the right to make changes in design, materials and operating ranges without notice.

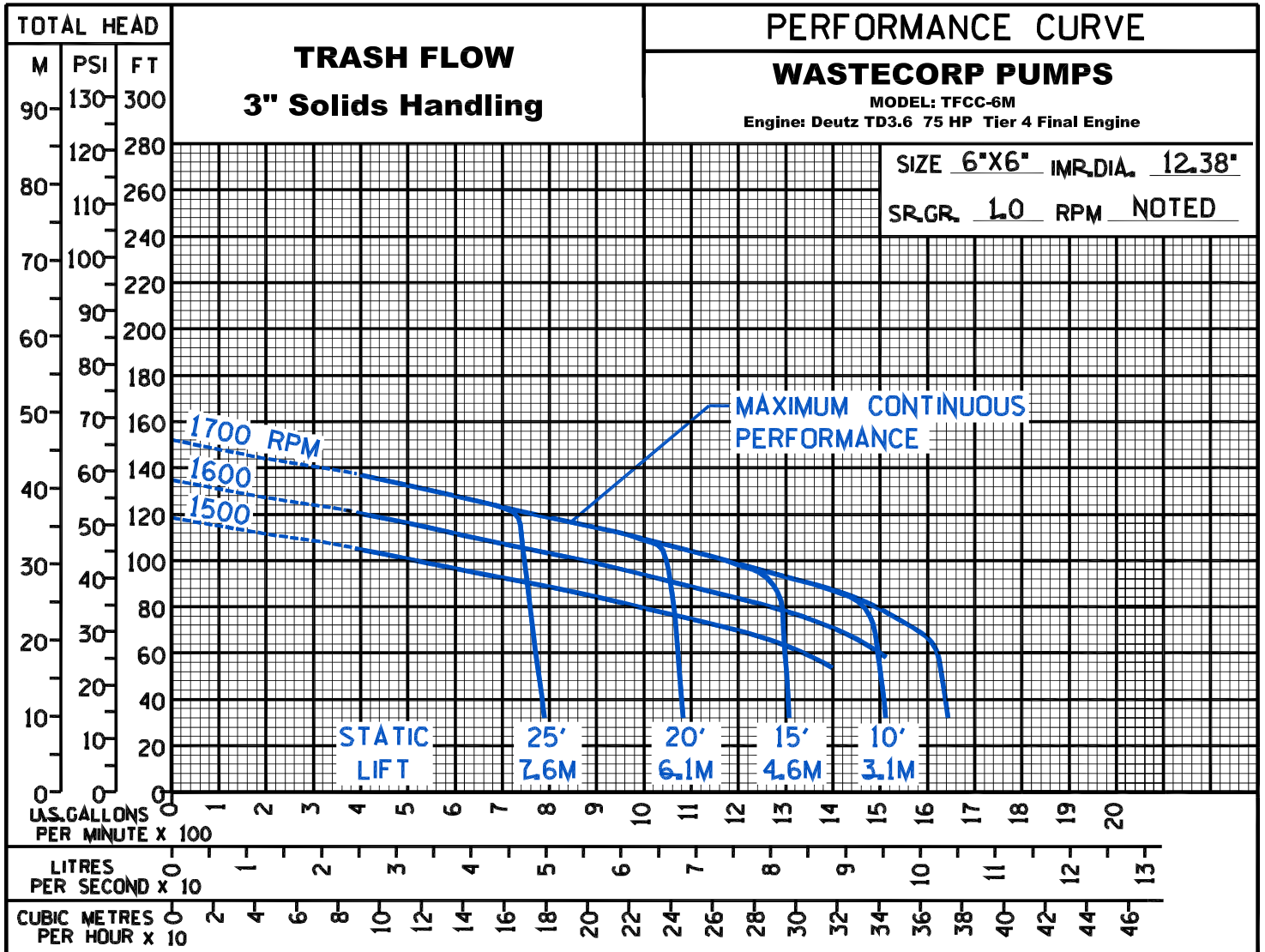
TRASH FLOW®

ENGINE DRIVEN TRASH PUMPS

TFCC-6M™



**WASTECORP
Pumps®**




**WASTECORP
Pumps®**
WASTECORP.COM

Wastecorp Pumps USA
P.O. Box 70
Grand Island, New York 14072 | USA
Tel: 888.829.2783 | Fax: 888.883.3320
sales@wastecorp.com

Wastecorp Pumps Canada Inc.
50 Shorncliffe Road
Toronto, Ontario M8Z-2X3 | Canada
Tel: 416.233.3000 | Fax: 416.233.2300
info@wastecorp.com

Wastecorp Pumps International
P.O. Box 70
Grand Island, New York 14072 | USA
Tel: 201.445.2882 | Fax: 201.445.3252
techsupport@wastecorp.com

CERTIFICATE

TUV Rheinland of North America, Inc.
295 Foster Street, Suite 100, Littleton, MA 01460



Hereby certifies that



WASTECORP
Pumps®

Wastecorp Pumps Inc.
50 Shorncliffe Road
Toronto ON M8Z 2X3, Canada

has established and maintains a quality management system for the
Design, Engineering, Manufacturing and Servicing of Pumps and Pump Systems

An audit was performed and documented in Report No 4124.
Proof has been furnished that the requirements according to

ISO 9001:2015

are fulfilled.

Further clarification regarding the scope of this certificate and the applicability of ISO 9001:2015 requirements may be obtained by contacting TRNA.

Certificate Registration No.

74 300 4124

Certificate Issue Date
January 23, 2019



Certificate Expiration Date
January 24, 2022

Reissue Date: January 21, 2019

A handwritten signature in blue ink, likely of the certification body representative.

Certification of Management Systems

CERTIFICATE

TUV Rheinland of North America, Inc.
295 Foster Street, Suite 100, Littleton, MA 01460



Hereby certifies that



WASTECORP
Pumps®

Wastecorp Pumps Inc.
50 Shorncliffe Road
Toronto ON M8Z 2X3, Canada

has established and maintains an environmental management system for the
Design, Engineering, Manufacturing and Servicing of Pumps and Pump Systems

An audit was performed and documented in Report No 4250.
Proof has been furnished that the requirements according to

ISO 14001: 2015

are fulfilled.

Further clarification regarding the scope of this certificate and the applicability of
ISO 14001:2015 requirements may be obtained by contacting TRNA.

Certificate Registration No.

74 300 4250

Certificate Issue Date
January 23, 2019



Certificate Expiration Date
January 24, 2022

Reissue Date: January 21, 2019

A handwritten signature in blue ink, likely of the certifying officer.

Certification of Management Systems